

Synergy Resources

Well Name: **SRC Wiedeman 21-5-3CHZ**

Surface Location: SRC Wiedeman Pad Sec.5-T5N-R66W
North American Datum 1983 , US State Plane 1983 , Colorado Northern Zone

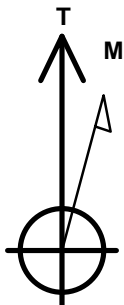
Ground Elevation: 4783.0

+N/-S	+E/-W	Northing	Easting	Latitude	Longitude	Slot
0.0	0.0	1401492.22	3194384.85	40.433397	-104.801704	

RKB - 13' WELL @ 4796.0ft (RKB - 13')

WELLBORE TARGET DETAILS

Name	TVD	+N/-S	+E/-W	Shape
SHL 1377'FNL & 2438'FEL, Sec.5		0.0	0.0	Point
BHL 460'FNL & 2167'FWL, Sec.3	7053.0	988.2	10012.2	Point



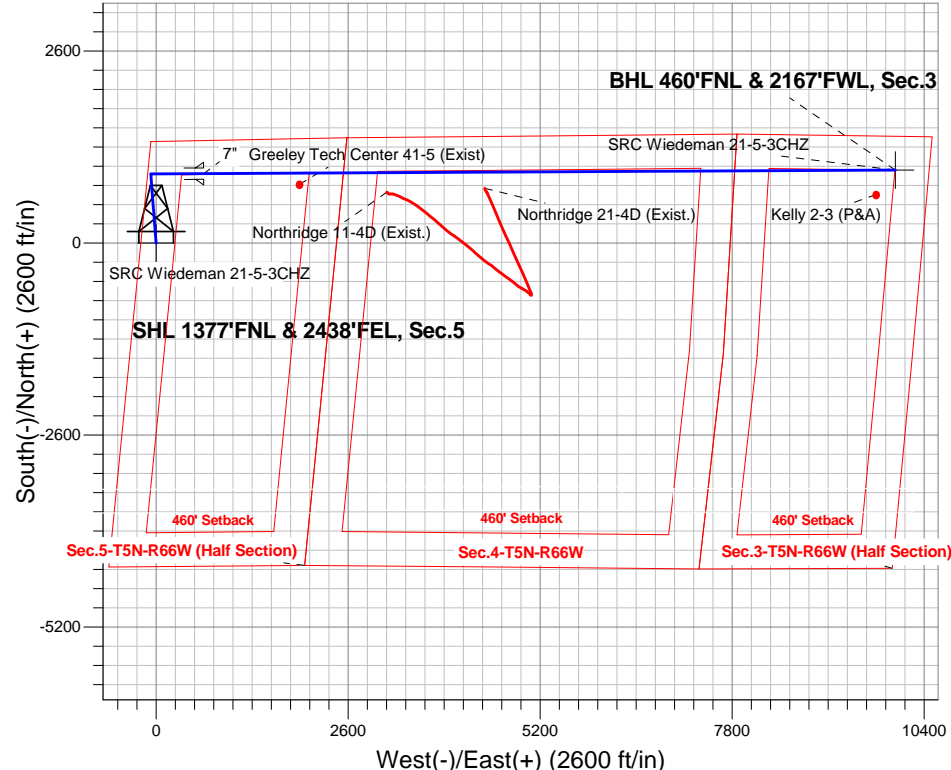
Azimuths to True North
Magnetic North: 8.44°

Magnetic Field
Strength: 52795.4snT
Dip Angle: 66.96°
Date: 10/10/2014
Model: IGRF2010

SRC Wiedeman Pad Sec.5-T5N-R66W
SRC Wiedeman 21-5-3CHZ
Plan #3 (10-10-14)
16:58, October 10 2014

ANNOTATIONS

TVD	MD	Annotation
500.0	500.0	KOP #1
6336.9	6421.8	KOP #2
7053.0	7546.8	End of Build

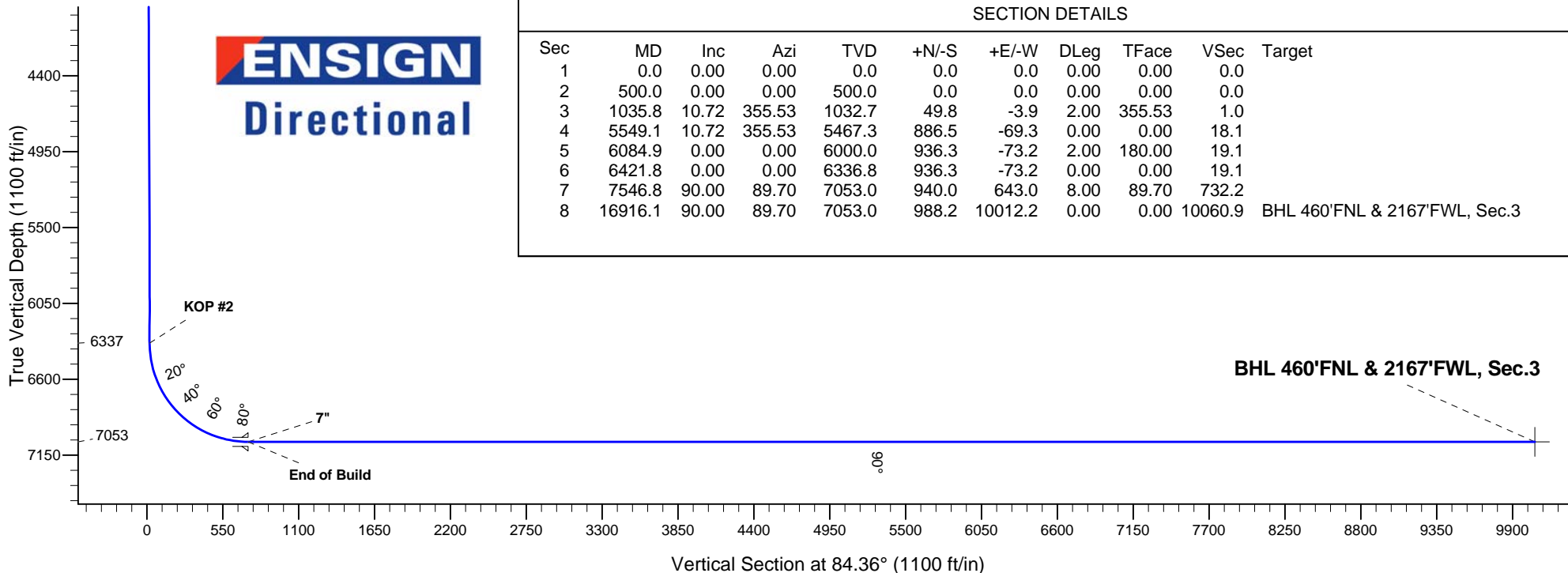


ENSIGN
Directional

SECTION DETAILS

Sec	MD	Inc	Azi	TVD	+N/-S	+E/-W	DLeg	TFace	VSec	Target
1	0.0	0.00	0.00	0.0	0.0	0.0	0.00	0.00	0.0	
2	500.0	0.00	0.00	500.0	0.0	0.0	0.00	0.00	0.0	
3	1035.8	10.72	355.53	1032.7	49.8	-3.9	2.00	355.53	1.0	
4	5549.1	10.72	355.53	5467.3	886.5	-69.3	0.00	0.00	18.1	
5	6084.9	0.00	0.00	6000.0	936.3	-73.2	2.00	180.00	19.1	
6	6421.8	0.00	0.00	6336.8	936.3	-73.2	0.00	0.00	19.1	
7	7546.8	90.00	89.70	7053.0	940.0	643.0	8.00	89.70	732.2	
8	16916.1	90.00	89.70	7053.0	988.2	10012.2	0.00	0.00	10060.9	BHL 460'FNL & 2167'FWL, Sec.3

BHL 460'FNL & 2167'FWL, Sec.3





Synergy Resources

Sec.5-T5N-R66W

SRC Wiedeman Pad Sec.5-T5N-R66W

SRC Wiedeman 21-5-3CHZ

Wellbore #1

Plan: Plan #3 (10-10-14)

Standard Planning Report

10 October, 2014

Database:	Landmark	Local Co-ordinate Reference:	Well SRC Wiedeman 21-5-3CHZ
Company:	Synergy Resources	TVD Reference:	WELL @ 4796.0ft (RKB - 13')
Project:	Sec.5-T5N-R66W	MD Reference:	WELL @ 4796.0ft (RKB - 13')
Site:	SRC Wiedeman Pad Sec.5-T5N-R66W	North Reference:	True
Well:	SRC Wiedeman 21-5-3CHZ	Survey Calculation Method:	Minimum Curvature
Wellbore:	Wellbore #1		
Design:	Plan #3 (10-10-14)		

Project	Sec.5-T5N-R66W		
Map System:	US State Plane 1983	System Datum:	Mean Sea Level
Geo Datum:	North American Datum 1983		Using Well Reference Point
Map Zone:	Colorado Northern Zone		Using geodetic scale factor

Site						SRC Wiedeman Pad Sec.5-T5N-R66W											
Site Position:						Northing:			1,401,391.96 ft			Latitude:			40.433123		
From:			Lat/Long			Easting:			3,194,327.74 ft			Longitude:			-104.801912		
Position Uncertainty:			0.0 ft			Slot Radius:			"			Grid Convergence:			0.45 °		

Well	SRC Wiedeman 21-5-3CHZ					
Well Position	+N/-S	99.8 ft	Northing:	1,401,492.22 ft	Latitude:	40.433397
	+E/-W	57.9 ft	Easting:	3,194,384.85 ft	Longitude:	-104.801704
Position Uncertainty		0.0 ft	Wellhead Elevation:	ft	Ground Level:	4,783.0 ft

Wellbore	Wellbore #1				
Magnetics	Model Name	Sample Date	Declination (°)	Dip Angle (°)	Field Strength (nT)
	IGRF2010	10/10/2014	8.44	66.96	52,795

Design	Plan #3 (10-10-14)			
Audit Notes:				
Version:	Phase:	PROTOTYPE	Tie On Depth:	0.0
Vertical Section:	Depth From (TVD) (ft)	+N/-S (ft)	+E/-W (ft)	Direction (°)
	0.0	0.0	0.0	84.36

Plan Sections										
Measured Depth (ft)	Inclination (°)	Azimuth (°)	Vertical Depth (ft)	+N/-S (ft)	+E/-W (ft)	Dogleg Rate (°/100ft)	Build Rate (°/100ft)	Turn Rate (°/100ft)	TFO (°)	Target
0.0	0.00	0.00	0.0	0.0	0.0	0.00	0.00	0.00	0.00	
500.0	0.00	0.00	500.0	0.0	0.0	0.00	0.00	0.00	0.00	
1,035.8	10.72	355.53	1,032.7	49.8	-3.9	2.00	2.00	0.00	355.53	
5,549.1	10.72	355.53	5,467.3	886.5	-69.3	0.00	0.00	0.00	0.00	
6,084.9	0.00	0.00	6,000.0	936.3	-73.2	2.00	-2.00	0.00	180.00	
6,421.8	0.00	0.00	6,336.8	936.3	-73.2	0.00	0.00	0.00	0.00	
7,546.8	90.00	89.70	7,053.0	940.0	643.0	8.00	8.00	0.00	89.70	
16,916.1	90.00	89.70	7,053.0	988.2	10,012.2	0.00	0.00	0.00	0.00	BHL 460'FNL & 216

Database:	Landmark	Local Co-ordinate Reference:	Well SRC Wiedeman 21-5-3CHZ
Company:	Synergy Resources	TVD Reference:	WELL @ 4796.0ft (RKB - 13')
Project:	Sec.5-T5N-R66W	MD Reference:	WELL @ 4796.0ft (RKB - 13')
Site:	SRC Wiedeman Pad Sec.5-T5N-R66W	North Reference:	True
Well:	SRC Wiedeman 21-5-3CHZ	Survey Calculation Method:	Minimum Curvature
Wellbore:	Wellbore #1		
Design:	Plan #3 (10-10-14)		

Planned Survey									
Measured Depth (ft)	Inclination (°)	Azimuth (°)	Vertical Depth (ft)	+N/-S (ft)	+E/-W (ft)	Vertical Section (ft)	Dogleg Rate (°/100ft)	Build Rate (°/100ft)	Turn Rate (°/100ft)
0.0	0.00	0.00	0.0	0.0	0.0	0.0	0.00	0.00	0.00
1.0	0.00	0.00	1.0	0.0	0.0	0.0	0.00	0.00	0.00
SHL 1377'FNL & 2438'FEL, Sec.5									
100.0	0.00	0.00	100.0	0.0	0.0	0.0	0.00	0.00	0.00
200.0	0.00	0.00	200.0	0.0	0.0	0.0	0.00	0.00	0.00
300.0	0.00	0.00	300.0	0.0	0.0	0.0	0.00	0.00	0.00
400.0	0.00	0.00	400.0	0.0	0.0	0.0	0.00	0.00	0.00
500.0	0.00	0.00	500.0	0.0	0.0	0.0	0.00	0.00	0.00
KOP #1									
600.0	2.00	355.53	600.0	1.7	-0.1	0.0	2.00	2.00	0.00
700.0	4.00	355.53	699.8	7.0	-0.5	0.1	2.00	2.00	0.00
800.0	6.00	355.53	799.5	15.6	-1.2	0.3	2.00	2.00	0.00
900.0	8.00	355.53	898.7	27.8	-2.2	0.6	2.00	2.00	0.00
1,000.0	10.00	355.53	997.5	43.4	-3.4	0.9	2.00	2.00	0.00
1,035.8	10.72	355.53	1,032.7	49.8	-3.9	1.0	2.00	2.00	0.00
1,100.0	10.72	355.53	1,095.8	61.7	-4.8	1.3	0.00	0.00	0.00
1,200.0	10.72	355.53	1,194.0	80.2	-6.3	1.6	0.00	0.00	0.00
1,300.0	10.72	355.53	1,292.3	98.8	-7.7	2.0	0.00	0.00	0.00
1,400.0	10.72	355.53	1,390.5	117.3	-9.2	2.4	0.00	0.00	0.00
1,500.0	10.72	355.53	1,488.8	135.9	-10.6	2.8	0.00	0.00	0.00
1,600.0	10.72	355.53	1,587.0	154.4	-12.1	3.2	0.00	0.00	0.00
1,700.0	10.72	355.53	1,685.3	172.9	-13.5	3.5	0.00	0.00	0.00
1,800.0	10.72	355.53	1,783.6	191.5	-15.0	3.9	0.00	0.00	0.00
1,900.0	10.72	355.53	1,881.8	210.0	-16.4	4.3	0.00	0.00	0.00
2,000.0	10.72	355.53	1,980.1	228.6	-17.9	4.7	0.00	0.00	0.00
2,100.0	10.72	355.53	2,078.3	247.1	-19.3	5.0	0.00	0.00	0.00
2,200.0	10.72	355.53	2,176.6	265.6	-20.8	5.4	0.00	0.00	0.00
2,300.0	10.72	355.53	2,274.8	284.2	-22.2	5.8	0.00	0.00	0.00
2,400.0	10.72	355.53	2,373.1	302.7	-23.7	6.2	0.00	0.00	0.00
2,500.0	10.72	355.53	2,471.3	321.2	-25.1	6.6	0.00	0.00	0.00
2,600.0	10.72	355.53	2,569.6	339.8	-26.6	6.9	0.00	0.00	0.00
2,700.0	10.72	355.53	2,667.9	358.3	-28.0	7.3	0.00	0.00	0.00
2,800.0	10.72	355.53	2,766.1	376.9	-29.5	7.7	0.00	0.00	0.00
2,900.0	10.72	355.53	2,864.4	395.4	-30.9	8.1	0.00	0.00	0.00
3,000.0	10.72	355.53	2,962.6	413.9	-32.4	8.5	0.00	0.00	0.00
3,100.0	10.72	355.53	3,060.9	432.5	-33.8	8.8	0.00	0.00	0.00
3,200.0	10.72	355.53	3,159.1	451.0	-35.3	9.2	0.00	0.00	0.00
3,300.0	10.72	355.53	3,257.4	469.5	-36.7	9.6	0.00	0.00	0.00
3,400.0	10.72	355.53	3,355.7	488.1	-38.2	10.0	0.00	0.00	0.00
3,500.0	10.72	355.53	3,453.9	506.6	-39.6	10.3	0.00	0.00	0.00
3,600.0	10.72	355.53	3,552.2	525.2	-41.1	10.7	0.00	0.00	0.00
3,700.0	10.72	355.53	3,650.4	543.7	-42.5	11.1	0.00	0.00	0.00
3,800.0	10.72	355.53	3,748.7	562.2	-44.0	11.5	0.00	0.00	0.00
3,900.0	10.72	355.53	3,846.9	580.8	-45.4	11.9	0.00	0.00	0.00
4,000.0	10.72	355.53	3,945.2	599.3	-46.9	12.2	0.00	0.00	0.00
4,100.0	10.72	355.53	4,043.4	617.8	-48.3	12.6	0.00	0.00	0.00
4,200.0	10.72	355.53	4,141.7	636.4	-49.8	13.0	0.00	0.00	0.00
4,300.0	10.72	355.53	4,240.0	654.9	-51.2	13.4	0.00	0.00	0.00
4,400.0	10.72	355.53	4,338.2	673.5	-52.7	13.8	0.00	0.00	0.00
4,500.0	10.72	355.53	4,436.5	692.0	-54.1	14.1	0.00	0.00	0.00
4,600.0	10.72	355.53	4,534.7	710.5	-55.6	14.5	0.00	0.00	0.00
4,700.0	10.72	355.53	4,633.0	729.1	-57.0	14.9	0.00	0.00	0.00
4,800.0	10.72	355.53	4,731.2	747.6	-58.4	15.3	0.00	0.00	0.00
4,900.0	10.72	355.53	4,829.5	766.2	-59.9	15.6	0.00	0.00	0.00

Database:	Landmark	Local Co-ordinate Reference:	Well SRC Wiedeman 21-5-3CHZ
Company:	Synergy Resources	TVD Reference:	WELL @ 4796.0ft (RKB - 13')
Project:	Sec.5-T5N-R66W	MD Reference:	WELL @ 4796.0ft (RKB - 13')
Site:	SRC Wiedeman Pad Sec.5-T5N-R66W	North Reference:	True
Well:	SRC Wiedeman 21-5-3CHZ	Survey Calculation Method:	Minimum Curvature
Wellbore:	Wellbore #1		
Design:	Plan #3 (10-10-14)		

Planned Survey									
Measured Depth (ft)	Inclination (°)	Azimuth (°)	Vertical Depth (ft)	+N/-S (ft)	+E/-W (ft)	Vertical Section (ft)	Dogleg Rate (°/100ft)	Build Rate (°/100ft)	Turn Rate (°/100ft)
5,000.0	10.72	355.53	4,927.7	784.7	-61.3	16.0	0.00	0.00	0.00
5,100.0	10.72	355.53	5,026.0	803.2	-62.8	16.4	0.00	0.00	0.00
5,200.0	10.72	355.53	5,124.3	821.8	-64.2	16.8	0.00	0.00	0.00
5,300.0	10.72	355.53	5,222.5	840.3	-65.7	17.2	0.00	0.00	0.00
5,400.0	10.72	355.53	5,320.8	858.8	-67.1	17.5	0.00	0.00	0.00
5,500.0	10.72	355.53	5,419.0	877.4	-68.6	17.9	0.00	0.00	0.00
5,549.1	10.72	355.53	5,467.3	886.5	-69.3	18.1	0.00	0.00	0.00
5,600.0	9.70	355.53	5,517.4	895.5	-70.0	18.3	2.00	-2.00	0.00
5,700.0	7.70	355.53	5,616.2	910.6	-71.2	18.6	2.00	-2.00	0.00
5,800.0	5.70	355.53	5,715.5	922.2	-72.1	18.8	2.00	-2.00	0.00
5,900.0	3.70	355.53	5,815.2	930.4	-72.7	19.0	2.00	-2.00	0.00
6,000.0	1.70	355.53	5,915.1	935.0	-73.1	19.1	2.00	-2.00	0.00
6,084.9	0.00	0.00	6,000.0	936.3	-73.2	19.1	2.00	-2.00	0.00
6,100.0	0.00	0.00	6,015.1	936.3	-73.2	19.1	0.00	0.00	0.00
6,200.0	0.00	0.00	6,115.1	936.3	-73.2	19.1	0.00	0.00	0.00
6,300.0	0.00	0.00	6,215.1	936.3	-73.2	19.1	0.00	0.00	0.00
6,400.0	0.00	0.00	6,315.1	936.3	-73.2	19.1	0.00	0.00	0.00
6,421.8	0.00	0.00	6,336.9	936.3	-73.2	19.1	0.00	0.00	0.00
KOP #2									
6,500.0	6.26	89.70	6,414.9	936.3	-68.9	23.4	8.01	8.01	0.00
6,600.0	14.26	89.70	6,513.2	936.4	-51.1	41.1	8.00	8.00	0.00
6,700.0	22.26	89.70	6,608.1	936.6	-19.8	72.3	8.00	8.00	0.00
6,800.0	30.26	89.70	6,697.7	936.8	24.4	116.3	8.00	8.00	0.00
6,900.0	38.26	89.70	6,780.3	937.1	80.6	172.3	8.00	8.00	0.00
7,000.0	46.26	89.70	6,854.2	937.4	147.8	239.2	8.00	8.00	0.00
7,100.0	54.26	89.70	6,918.1	937.8	224.7	315.7	8.00	8.00	0.00
7,200.0	62.26	89.70	6,970.7	938.3	309.6	400.3	8.00	8.00	0.00
7,300.0	70.26	89.70	7,010.9	938.7	401.1	491.4	8.00	8.00	0.00
7,400.0	78.26	89.70	7,038.0	939.2	497.3	587.1	8.00	8.00	0.00
7,500.0	86.26	89.70	7,051.5	939.7	596.3	685.7	8.00	8.00	0.00
7,546.8	90.00	89.70	7,053.0	940.0	643.0	732.3	7.99	7.99	0.00
End of Build - 7"									
7,600.0	90.00	89.70	7,053.0	940.3	696.2	785.2	0.00	0.00	0.00
7,700.0	90.00	89.70	7,053.0	940.8	796.2	884.8	0.00	0.00	0.00
7,800.0	90.00	89.70	7,053.0	941.3	896.2	984.4	0.00	0.00	0.00
7,900.0	90.00	89.70	7,053.0	941.8	996.2	1,083.9	0.00	0.00	0.00
8,000.0	90.00	89.70	7,053.0	942.3	1,096.2	1,183.5	0.00	0.00	0.00
8,100.0	90.00	89.70	7,053.0	942.8	1,196.2	1,283.1	0.00	0.00	0.00
8,200.0	90.00	89.70	7,053.0	943.4	1,296.2	1,382.6	0.00	0.00	0.00
8,300.0	90.00	89.70	7,053.0	943.9	1,396.2	1,482.2	0.00	0.00	0.00
8,400.0	90.00	89.70	7,053.0	944.4	1,496.2	1,581.8	0.00	0.00	0.00
8,500.0	90.00	89.70	7,053.0	944.9	1,596.2	1,681.3	0.00	0.00	0.00
8,600.0	90.00	89.70	7,053.0	945.4	1,696.2	1,780.9	0.00	0.00	0.00
8,700.0	90.00	89.70	7,053.0	945.9	1,796.2	1,880.4	0.00	0.00	0.00
8,800.0	90.00	89.70	7,053.0	946.4	1,896.2	1,980.0	0.00	0.00	0.00
8,900.0	90.00	89.70	7,053.0	947.0	1,996.2	2,079.6	0.00	0.00	0.00
9,000.0	90.00	89.70	7,053.0	947.5	2,096.2	2,179.1	0.00	0.00	0.00
9,100.0	90.00	89.70	7,053.0	948.0	2,196.2	2,278.7	0.00	0.00	0.00
9,200.0	90.00	89.70	7,053.0	948.5	2,296.2	2,378.3	0.00	0.00	0.00
9,300.0	90.00	89.70	7,053.0	949.0	2,396.2	2,477.8	0.00	0.00	0.00
9,400.0	90.00	89.70	7,053.0	949.5	2,496.2	2,577.4	0.00	0.00	0.00
9,500.0	90.00	89.70	7,053.0	950.0	2,596.2	2,677.0	0.00	0.00	0.00
9,600.0	90.00	89.70	7,053.0	950.6	2,696.2	2,776.5	0.00	0.00	0.00
9,700.0	90.00	89.70	7,053.0	951.1	2,796.2	2,876.1	0.00	0.00	0.00

Database:	Landmark	Local Co-ordinate Reference:	Well SRC Wiedeman 21-5-3CHZ
Company:	Synergy Resources	TVD Reference:	WELL @ 4796.0ft (RKB - 13')
Project:	Sec.5-T5N-R66W	MD Reference:	WELL @ 4796.0ft (RKB - 13')
Site:	SRC Wiedeman Pad Sec.5-T5N-R66W	North Reference:	True
Well:	SRC Wiedeman 21-5-3CHZ	Survey Calculation Method:	Minimum Curvature
Wellbore:	Wellbore #1		
Design:	Plan #3 (10-10-14)		

Planned Survey									
Measured Depth (ft)	Inclination (°)	Azimuth (°)	Vertical Depth (ft)	+N/-S (ft)	+E/-W (ft)	Vertical Section (ft)	Dogleg Rate (°/100ft)	Build Rate (°/100ft)	Turn Rate (°/100ft)
9,800.0	90.00	89.70	7,053.0	951.6	2,896.2	2,975.7	0.00	0.00	0.00
9,900.0	90.00	89.70	7,053.0	952.1	2,996.2	3,075.2	0.00	0.00	0.00
10,000.0	90.00	89.70	7,053.0	952.6	3,096.2	3,174.8	0.00	0.00	0.00
10,100.0	90.00	89.70	7,053.0	953.1	3,196.2	3,274.4	0.00	0.00	0.00
10,200.0	90.00	89.70	7,053.0	953.7	3,296.2	3,373.9	0.00	0.00	0.00
10,300.0	90.00	89.70	7,053.0	954.2	3,396.2	3,473.5	0.00	0.00	0.00
10,400.0	90.00	89.70	7,053.0	954.7	3,496.2	3,573.1	0.00	0.00	0.00
10,500.0	90.00	89.70	7,053.0	955.2	3,596.2	3,672.6	0.00	0.00	0.00
10,600.0	90.00	89.70	7,053.0	955.7	3,696.2	3,772.2	0.00	0.00	0.00
10,700.0	90.00	89.70	7,053.0	956.2	3,796.2	3,871.8	0.00	0.00	0.00
10,800.0	90.00	89.70	7,053.0	956.7	3,896.2	3,971.3	0.00	0.00	0.00
10,900.0	90.00	89.70	7,053.0	957.3	3,996.2	4,070.9	0.00	0.00	0.00
11,000.0	90.00	89.70	7,053.0	957.8	4,096.2	4,170.5	0.00	0.00	0.00
11,100.0	90.00	89.70	7,053.0	958.3	4,196.2	4,270.0	0.00	0.00	0.00
11,200.0	90.00	89.70	7,053.0	958.8	4,296.2	4,369.6	0.00	0.00	0.00
11,300.0	90.00	89.70	7,053.0	959.3	4,396.2	4,469.2	0.00	0.00	0.00
11,400.0	90.00	89.70	7,053.0	959.8	4,496.2	4,568.7	0.00	0.00	0.00
11,500.0	90.00	89.70	7,053.0	960.3	4,596.2	4,668.3	0.00	0.00	0.00
11,600.0	90.00	89.70	7,053.0	960.9	4,696.2	4,767.9	0.00	0.00	0.00
11,700.0	90.00	89.70	7,053.0	961.4	4,796.2	4,867.4	0.00	0.00	0.00
11,800.0	90.00	89.70	7,053.0	961.9	4,896.2	4,967.0	0.00	0.00	0.00
11,900.0	90.00	89.70	7,053.0	962.4	4,996.2	5,066.6	0.00	0.00	0.00
12,000.0	90.00	89.70	7,053.0	962.9	5,096.2	5,166.1	0.00	0.00	0.00
12,100.0	90.00	89.70	7,053.0	963.4	5,196.2	5,265.7	0.00	0.00	0.00
12,200.0	90.00	89.70	7,053.0	964.0	5,296.2	5,365.2	0.00	0.00	0.00
12,300.0	90.00	89.70	7,053.0	964.5	5,396.2	5,464.8	0.00	0.00	0.00
12,400.0	90.00	89.70	7,053.0	965.0	5,496.2	5,564.4	0.00	0.00	0.00
12,500.0	90.00	89.70	7,053.0	965.5	5,596.2	5,663.9	0.00	0.00	0.00
12,600.0	90.00	89.70	7,053.0	966.0	5,696.2	5,763.5	0.00	0.00	0.00
12,700.0	90.00	89.70	7,053.0	966.5	5,796.2	5,863.1	0.00	0.00	0.00
12,800.0	90.00	89.70	7,053.0	967.0	5,896.2	5,962.6	0.00	0.00	0.00
12,900.0	90.00	89.70	7,053.0	967.6	5,996.2	6,062.2	0.00	0.00	0.00
13,000.0	90.00	89.70	7,053.0	968.1	6,096.2	6,161.8	0.00	0.00	0.00
13,100.0	90.00	89.70	7,053.0	968.6	6,196.2	6,261.3	0.00	0.00	0.00
13,200.0	90.00	89.70	7,053.0	969.1	6,296.2	6,360.9	0.00	0.00	0.00
13,300.0	90.00	89.70	7,053.0	969.6	6,396.2	6,460.5	0.00	0.00	0.00
13,400.0	90.00	89.70	7,053.0	970.1	6,496.2	6,560.0	0.00	0.00	0.00
13,500.0	90.00	89.70	7,053.0	970.7	6,596.2	6,659.6	0.00	0.00	0.00
13,600.0	90.00	89.70	7,053.0	971.2	6,696.2	6,759.2	0.00	0.00	0.00
13,700.0	90.00	89.70	7,053.0	971.7	6,796.2	6,858.7	0.00	0.00	0.00
13,800.0	90.00	89.70	7,053.0	972.2	6,896.2	6,958.3	0.00	0.00	0.00
13,900.0	90.00	89.70	7,053.0	972.7	6,996.2	7,057.9	0.00	0.00	0.00
14,000.0	90.00	89.70	7,053.0	973.2	7,096.2	7,157.4	0.00	0.00	0.00
14,100.0	90.00	89.70	7,053.0	973.7	7,196.1	7,257.0	0.00	0.00	0.00
14,200.0	90.00	89.70	7,053.0	974.3	7,296.1	7,356.6	0.00	0.00	0.00
14,300.0	90.00	89.70	7,053.0	974.8	7,396.1	7,456.1	0.00	0.00	0.00
14,400.0	90.00	89.70	7,053.0	975.3	7,496.1	7,555.7	0.00	0.00	0.00
14,500.0	90.00	89.70	7,053.0	975.8	7,596.1	7,655.3	0.00	0.00	0.00
14,600.0	90.00	89.70	7,053.0	976.3	7,696.1	7,754.8	0.00	0.00	0.00
14,700.0	90.00	89.70	7,053.0	976.8	7,796.1	7,854.4	0.00	0.00	0.00
14,800.0	90.00	89.70	7,053.0	977.3	7,896.1	7,954.0	0.00	0.00	0.00
14,900.0	90.00	89.70	7,053.0	977.9	7,996.1	8,053.5	0.00	0.00	0.00
15,000.0	90.00	89.70	7,053.0	978.4	8,096.1	8,153.1	0.00	0.00	0.00
15,100.0	90.00	89.70	7,053.0	978.9	8,196.1	8,252.7	0.00	0.00	0.00

Plan Annotations					
	Measured Depth (ft)	Vertical Depth (ft)	Local Coordinates		Comment
			+N/-S	+E/-W	
			(ft)	(ft)	
	500.0	500.0	0.0	0.0	KOP #1
	6,421.8	6,336.9	936.3	-73.2	KOP #2
	7,546.8	7,053.0	940.0	643.0	End of Build



Synergy Resources

Sec.5-T5N-R66W

SRC Wiedeman Pad Sec.5-T5N-R66W

SRC Wiedeman 21-5-3CHZ

Wellbore #1

Plan #3 (10-10-14)

Anticollision Report

10 October, 2014

Company:	Synergy Resources	Local Co-ordinate Reference:	Well SRC Wiedeman 21-5-3CHZ
Project:	Sec.5-T5N-R66W	TVD Reference:	WELL @ 4796.0ft (RKB - 13')
Reference Site:	SRC Wiedeman Pad Sec.5-T5N-R66W	MD Reference:	WELL @ 4796.0ft (RKB - 13')
Site Error:	0.0ft	North Reference:	True
Reference Well:	SRC Wiedeman 21-5-3CHZ	Survey Calculation Method:	Minimum Curvature
Well Error:	0.0ft	Output errors are at	2.00 sigma
Reference Wellbore	Wellbore #1	Database:	Landmark
Reference Design:	Plan #3 (10-10-14)	Offset TVD Reference:	Offset Datum

Offset Design												Offset Site Error:	0.0 ft
Existing Wells - Sec.4-T5N-R66W - Greeley Tech Center 41-5 (Exist) - Wellbore #1 - Wellbore #1												Offset Well Error:	0.0 ft
Survey Program: 7811-UNKNOWN													
Reference		Offset		Semi Major Axis			Distance						
Measured Depth (ft)	Vertical Depth (ft)	Measured Depth (ft)	Vertical Depth (ft)	Reference (ft)	Offset (ft)	Highside Toolface (°)	Offset Wellbore Centre +N/-S (ft)	+E/-W (ft)	Between Centres (ft)	Between Ellipses (ft)	Minimum Separation (ft)	Separation Factor	Warning
8,400.0	7,053.0	2,257.0	2,257.0	45.4	45.1	90.00	796.5	1,940.6	468.3	378.8	89.45	5.235	
8,500.0	7,053.0	2,257.0	2,257.0	48.0	45.1	90.00	796.5	1,940.6	375.0	282.9	92.05	4.073	
8,600.0	7,053.0	2,257.0	2,257.0	50.5	45.1	90.00	796.5	1,940.6	286.1	191.5	94.67	3.023	
8,700.0	7,053.0	2,257.0	2,257.0	53.1	45.1	90.00	796.5	1,940.6	207.8	110.5	97.31	2.135	
8,800.0	7,053.0	2,257.0	2,257.0	55.7	45.1	90.00	796.5	1,940.6	156.4	56.4	99.97	1.564	
8,843.5	7,053.0	2,257.0	2,257.0	56.9	45.1	90.00	796.5	1,940.6	150.2	49.1	101.13	1.485	Level 3, CC, ES, SF
8,900.0	7,053.0	2,257.0	2,257.0	58.3	45.1	90.00	796.5	1,940.6	160.4	57.8	102.64	1.563	
9,000.0	7,053.0	2,257.0	2,257.0	61.0	45.1	90.00	796.5	1,940.6	216.9	111.5	105.33	2.059	
9,100.0	7,053.0	2,257.0	2,257.0	63.6	45.1	90.00	796.5	1,940.6	297.2	189.2	108.02	2.751	
9,200.0	7,053.0	2,257.0	2,257.0	66.3	45.1	90.00	796.5	1,940.6	386.8	276.1	110.72	3.493	
9,300.0	7,053.0	2,257.0	2,257.0	69.0	45.1	90.00	796.5	1,940.6	480.5	367.1	113.44	4.236	
9,400.0	7,053.0	2,257.0	2,257.0	71.7	45.1	90.00	796.5	1,940.6	576.4	460.2	116.16	4.962	
9,500.0	7,053.0	2,257.0	2,257.0	74.4	45.1	90.00	796.5	1,940.6	673.4	554.5	118.88	5.664	
9,600.0	7,053.0	2,257.0	2,257.0	77.1	45.1	90.00	796.5	1,940.6	771.2	649.6	121.62	6.341	

Company:	Synergy Resources	Local Co-ordinate Reference:	Well SRC Wiedeman 21-5-3CHZ
Project:	Sec.5-T5N-R66W	TVD Reference:	WELL @ 4796.0ft (RKB - 13')
Reference Site:	SRC Wiedeman Pad Sec.5-T5N-R66W	MD Reference:	WELL @ 4796.0ft (RKB - 13')
Site Error:	0.0ft	North Reference:	True
Reference Well:	SRC Wiedeman 21-5-3CHZ	Survey Calculation Method:	Minimum Curvature
Well Error:	0.0ft	Output errors are at	2.00 sigma
Reference Wellbore	Wellbore #1	Database:	Landmark
Reference Design:	Plan #3 (10-10-14)	Offset TVD Reference:	Offset Datum

Offset Design												Offset Site Error:	0.0 ft
Existing Wells - Sec.4-T5N-R66W - Kelly 2-3 (P&A) - Wellbore #1 - Wellbore #1												Offset Well Error:	0.0 ft
Survey Program: 7403-UNKNOWN													
Reference		Offset		Semi Major Axis			Distance						
Measured Depth (ft)	Vertical Depth (ft)	Measured Depth (ft)	Vertical Depth (ft)	Reference (ft)	Offset (ft)	Highside Toolface (°)	Offset Wellbore Centre +N/-S (ft)	+E/-W (ft)	Between Centres (ft)	Between Ellipses (ft)	Minimum Separation (ft)	Separation Factor	Warning
16,000.0	7,053.0	2,257.0	2,257.0	255.0	45.1	90.00	656.6	9,752.1	732.9	433.0	299.92	2.444	
16,100.0	7,053.0	2,257.0	2,257.0	257.8	45.1	90.00	656.6	9,752.1	645.2	342.5	302.72	2.131	
16,200.0	7,053.0	2,257.0	2,257.0	260.6	45.1	90.00	656.6	9,752.1	561.7	256.1	305.52	1.838	
16,300.0	7,053.0	2,257.0	2,257.0	263.4	45.1	90.00	656.6	9,752.1	484.4	176.0	308.33	1.571	
16,400.0	7,053.0	2,257.0	2,257.0	266.2	45.1	90.00	656.6	9,752.1	416.8	105.7	311.13	1.340	Level 3
16,500.0	7,053.0	2,257.0	2,257.0	269.0	45.1	90.00	656.6	9,752.1	364.6	50.6	313.93	1.161	Level 2
16,600.0	7,053.0	2,257.0	2,257.0	271.8	45.1	90.00	656.6	9,752.1	334.7	18.0	316.73	1.057	Level 2
16,654.3	7,053.0	2,257.0	2,257.0	273.3	45.1	90.00	656.6	9,752.1	330.3	12.0	318.25	1.038	Level 2, CC, ES, SF
16,700.0	7,053.0	2,257.0	2,257.0	274.6	45.1	90.00	656.6	9,752.1	333.4	13.9	319.53	1.044	Level 2
16,800.0	7,053.0	2,257.0	2,257.0	277.4	45.1	90.00	656.6	9,752.1	361.0	38.7	322.34	1.120	Level 2
16,900.0	7,053.0	2,257.0	2,257.0	280.2	45.1	90.00	656.6	9,752.1	411.7	86.5	325.14	1.266	Level 3
16,916.1	7,053.0	2,257.0	2,257.0	280.6	45.1	90.00	656.6	9,752.1	421.5	95.9	325.59	1.295	Level 3

Company:	Synergy Resources	Local Co-ordinate Reference:	Well SRC Wiedeman 21-5-3CHZ
Project:	Sec.5-T5N-R66W	TVD Reference:	WELL @ 4796.0ft (RKB - 13')
Reference Site:	SRC Wiedeman Pad Sec.5-T5N-R66W	MD Reference:	WELL @ 4796.0ft (RKB - 13')
Site Error:	0.0ft	North Reference:	True
Reference Well:	SRC Wiedeman 21-5-3CHZ	Survey Calculation Method:	Minimum Curvature
Well Error:	0.0ft	Output errors are at	2.00 sigma
Reference Wellbore	Wellbore #1	Database:	Landmark
Reference Design:	Plan #3 (10-10-14)	Offset TVD Reference:	Offset Datum

Offset Design Northridge Pad Sec.4-T5N-R66W - Northridge 11-4D (Exist.) - Wellbore #1 - Wellbore #1												Offset Site Error:	0.0 ft
Survey Program: 147-MWD												Offset Well Error:	0.0 ft
Reference		Offset		Semi Major Axis			Distance						
Measured Depth (ft)	Vertical Depth (ft)	Measured Depth (ft)	Vertical Depth (ft)	Reference (ft)	Offset (ft)	Highside Toolface (°)	Offset Wellbore Centre +N/-S (ft)	+E/-W (ft)	Between Centres (ft)	Between Ellipses (ft)	Minimum Separation (ft)	Separation Factor	Warning
9,300.0	7,053.0	7,546.3	7,026.9	69.0	49.2	93.57	681.7	3,132.8	783.7	673.5	110.27	7.107	
9,400.0	7,053.0	7,544.6	7,025.3	71.7	49.2	93.22	681.7	3,132.8	690.8	577.8	112.99	6.114	
9,500.0	7,053.0	7,543.0	7,023.6	74.4	49.2	92.88	681.7	3,132.8	600.1	484.4	115.72	5.186	
9,600.0	7,053.0	7,541.4	7,022.1	77.1	49.2	92.55	681.7	3,132.8	512.9	394.5	118.45	4.330	
9,700.0	7,053.0	7,539.9	7,020.5	79.8	49.2	92.23	681.6	3,132.9	431.3	310.2	121.18	3.559	
9,800.0	7,053.0	7,538.4	7,019.0	82.5	49.2	91.91	681.6	3,132.9	359.2	235.3	123.92	2.898	
9,900.0	7,053.0	7,536.9	7,017.5	85.3	49.2	91.59	681.6	3,132.9	303.2	176.6	126.66	2.394	
10,000.0	7,053.0	7,535.5	7,016.1	88.0	49.2	91.29	681.5	3,132.9	273.6	144.2	129.40	2.115	
10,035.3	7,053.0	7,535.0	7,015.6	89.0	49.2	91.18	681.5	3,132.9	271.3	141.0	130.37	2.081	CC, ES, SF
10,100.0	7,053.0	7,534.0	7,014.7	90.7	49.2	90.99	681.5	3,133.0	278.9	146.8	132.14	2.111	
10,200.0	7,053.0	7,532.7	7,013.3	93.5	49.2	90.69	681.5	3,133.0	317.4	182.5	134.88	2.353	
10,300.0	7,053.0	7,531.3	7,011.9	96.2	49.2	90.41	681.4	3,133.0	379.0	241.4	137.62	2.754	
10,400.0	7,053.0	7,529.9	7,010.6	99.0	49.2	90.12	681.4	3,133.0	454.5	314.1	140.36	3.238	
10,500.0	7,053.0	7,528.6	7,009.3	101.7	49.2	89.85	681.4	3,133.0	538.0	394.9	143.10	3.760	
10,600.0	7,053.0	7,527.3	7,008.0	104.5	49.2	89.57	681.4	3,133.1	626.4	480.6	145.85	4.295	
10,700.0	7,053.0	7,526.1	7,006.7	107.2	49.2	89.31	681.3	3,133.1	717.9	569.3	148.59	4.831	

Company:	Synergy Resources	Local Co-ordinate Reference:	Well SRC Wiedeman 21-5-3CHZ
Project:	Sec.5-T5N-R66W	TVD Reference:	WELL @ 4796.0ft (RKB - 13')
Reference Site:	SRC Wiedeman Pad Sec.5-T5N-R66W	MD Reference:	WELL @ 4796.0ft (RKB - 13')
Site Error:	0.0ft	North Reference:	True
Reference Well:	SRC Wiedeman 21-5-3CHZ	Survey Calculation Method:	Minimum Curvature
Well Error:	0.0ft	Output errors are at	2.00 sigma
Reference Wellbore	Wellbore #1	Database:	Landmark
Reference Design:	Plan #3 (10-10-14)	Offset TVD Reference:	Offset Datum

Offset Design Northridge Pad Sec.4-T5N-R66W - Northridge 21-4D (Exist.) - Wellbore #1 - Wellbore #1												Offset Site Error:	0.0 ft
Survey Program: 150-MWD												Offset Well Error:	0.0 ft
Reference		Offset		Semi Major Axis			Distance						
Measured Depth (ft)	Vertical Depth (ft)	Measured Depth (ft)	Vertical Depth (ft)	Reference (ft)	Offset (ft)	Highside Toolface (°)	Offset Wellbore Centre +N/-S (ft)	+E/-W (ft)	Between Centres (ft)	Between Ellipses (ft)	Minimum Separation (ft)	Separation Factor	Warning
10,600.0	7,053.0	7,273.9	7,046.8	104.5	31.5	98.74	720.4	4,455.4	795.7	671.4	124.30	6.401	
10,700.0	7,053.0	7,271.0	7,043.9	107.2	31.5	98.07	720.2	4,455.5	701.1	573.9	127.17	5.513	
10,800.0	7,053.0	7,268.1	7,041.1	110.0	31.5	97.39	720.0	4,455.6	608.2	478.1	130.04	4.677	
10,900.0	7,053.0	7,265.2	7,038.2	112.8	31.5	96.70	719.9	4,455.6	517.9	385.0	132.90	3.897	
11,000.0	7,053.0	7,262.3	7,035.2	115.5	31.4	96.00	719.7	4,455.7	432.0	296.2	135.75	3.182	
11,100.0	7,053.0	7,259.3	7,032.3	118.3	31.4	95.30	719.5	4,455.8	353.4	214.8	138.60	2.550	
11,200.0	7,053.0	7,256.3	7,029.3	121.1	31.4	94.58	719.3	4,455.9	288.5	147.1	141.43	2.040	
11,300.0	7,053.0	7,253.3	7,026.2	123.8	31.4	93.86	719.1	4,456.0	248.0	103.8	144.25	1.720	
11,358.6	7,053.0	7,251.5	7,024.4	125.5	31.4	93.43	719.0	4,456.1	241.0	95.1	145.90	1.652 CC, ES, SF	
11,400.0	7,053.0	7,250.2	7,023.1	126.6	31.4	93.13	719.0	4,456.1	244.5	97.5	147.06	1.663	
11,500.0	7,053.0	7,247.1	7,020.0	129.4	31.4	92.39	718.8	4,456.2	279.4	129.5	149.85	1.865	
11,600.0	7,053.0	7,243.9	7,016.9	132.2	31.4	91.64	718.6	4,456.3	341.0	188.4	152.61	2.235	
11,700.0	7,053.0	7,240.7	7,013.7	134.9	31.4	90.88	718.4	4,456.4	417.7	262.4	155.36	2.689	
11,800.0	7,053.0	7,237.5	7,010.5	137.7	31.4	90.11	718.2	4,456.5	502.7	344.6	158.09	3.180	
11,900.0	7,053.0	7,234.2	7,007.2	140.5	31.4	89.34	718.0	4,456.6	592.4	431.6	160.78	3.684	
12,000.0	7,053.0	7,230.9	7,003.9	143.3	31.4	88.56	717.8	4,456.7	684.9	521.4	163.46	4.190	
12,100.0	7,053.0	7,227.6	7,000.6	146.0	31.4	87.77	717.6	4,456.8	779.2	613.1	166.10	4.691	

Company:	Synergy Resources	Local Co-ordinate Reference:	Well SRC Wiedeman 21-5-3CHZ
Project:	Sec.5-T5N-R66W	TVD Reference:	WELL @ 4796.0ft (RKB - 13')
Reference Site:	SRC Wiedeman Pad Sec.5-T5N-R66W	MD Reference:	WELL @ 4796.0ft (RKB - 13')
Site Error:	0.0ft	North Reference:	True
Reference Well:	SRC Wiedeman 21-5-3CHZ	Survey Calculation Method:	Minimum Curvature
Well Error:	0.0ft	Output errors are at	2.00 sigma
Reference Wellbore	Wellbore #1	Database:	Landmark
Reference Design:	Plan #3 (10-10-14)	Offset TVD Reference:	Offset Datum

Offset Design													Offset Site Error:	0.0 ft
Survey Program: 0-MWD													Offset Well Error:	0.0 ft
Reference		Offset		Semi Major Axis			Distance							Warning
Measured Depth (ft)	Vertical Depth (ft)	Measured Depth (ft)	Vertical Depth (ft)	Reference (ft)	Offset (ft)	Highside Toolface (°)	Offset Wellbore Centre +N/-S (ft)	+E/-W (ft)	Between Centres (ft)	Between Ellipses (ft)	Minimum Separation (ft)	Separation Factor		
0.0	0.0	0.0	0.0	0.0	0.0	-174.15	-29.9	-3.1	30.0					
100.0	100.0	100.0	100.0	0.1	0.1	-174.15	-29.9	-3.1	30.0	29.8	0.22	133.589		
200.0	200.0	200.0	200.0	0.3	0.3	-174.15	-29.9	-3.1	30.0	29.4	0.67	44.530		
300.0	300.0	300.0	300.0	0.6	0.6	-174.15	-29.9	-3.1	30.0	28.9	1.12	26.718		
400.0	400.0	400.0	400.0	0.8	0.8	-174.15	-29.9	-3.1	30.0	28.5	1.57	19.084		
500.0	500.0	500.0	500.0	1.0	1.0	-174.15	-29.9	-3.1	30.0	28.0	2.02	14.843 CC, ES		
600.0	600.0	600.0	600.0	1.2	1.2	-170.23	-29.9	-3.1	31.7	29.3	2.47	12.827		
700.0	699.8	699.8	699.8	1.5	1.5	-171.60	-29.9	-3.1	36.9	34.0	2.93	12.607		
800.0	799.5	799.5	799.5	1.7	1.7	-173.18	-29.9	-3.1	45.6	42.2	3.38	13.477		
900.0	898.7	898.7	898.7	2.0	1.9	-174.59	-29.9	-3.1	57.7	53.8	3.83	15.058		
1,000.0	997.5	997.5	997.5	2.3	2.1	-175.72	-29.9	-3.1	73.3	69.0	4.28	17.124		
1,035.8	1,032.7	1,032.7	1,032.7	2.4	2.2	-176.06	-29.9	-3.1	79.7	75.2	4.44	17.954		
1,100.0	1,095.8	1,095.8	1,095.8	2.6	2.4	-176.57	-29.9	-3.1	91.6	86.9	4.73	19.363		
1,200.0	1,194.0	1,194.0	1,194.0	2.9	2.6	-177.15	-29.9	-3.1	110.2	105.0	5.19	21.230		
1,300.0	1,292.3	1,292.3	1,292.3	3.3	2.8	-177.56	-29.9	-3.1	128.7	123.1	5.65	22.782		
1,400.0	1,390.5	1,390.5	1,390.5	3.7	3.0	-177.87	-29.9	-3.1	147.3	141.2	6.12	24.090		
1,500.0	1,488.8	1,488.8	1,488.8	4.1	3.2	-178.11	-29.9	-3.1	165.9	159.3	6.58	25.206		
1,600.0	1,587.0	1,592.6	1,592.6	4.5	3.5	-178.14	-28.5	-3.7	183.2	176.1	7.06	25.950		
1,700.0	1,685.3	1,698.2	1,698.0	4.8	3.7	-177.78	-23.6	-5.8	197.1	189.5	7.54	26.141		
1,800.0	1,783.6	1,804.6	1,804.0	5.2	3.9	-177.07	-15.0	-9.4	207.6	199.5	8.03	25.852		
1,900.0	1,881.8	1,907.7	1,906.4	5.6	4.2	-176.11	-3.7	-14.3	215.1	206.6	8.52	25.249		
2,000.0	1,980.1	2,007.4	2,005.3	6.0	4.4	-175.21	7.6	-19.2	222.4	213.4	9.01	24.672		
2,100.0	2,078.3	2,107.0	2,104.2	6.4	4.7	-174.37	18.9	-24.0	229.7	220.2	9.51	24.146		
2,200.0	2,176.6	2,206.7	2,203.1	6.8	5.0	-173.58	30.2	-28.9	237.0	227.0	10.01	23.668		
2,300.0	2,274.8	2,306.4	2,302.0	7.2	5.2	-172.84	41.6	-33.7	244.4	233.9	10.52	23.228		
2,400.0	2,373.1	2,406.1	2,400.9	7.6	5.5	-172.14	52.9	-38.6	251.8	240.8	11.03	22.823		
2,500.0	2,471.3	2,505.7	2,499.9	8.0	5.8	-171.48	64.2	-43.4	259.3	247.7	11.55	22.450		
2,600.0	2,569.6	2,605.4	2,598.8	8.4	6.1	-170.86	75.5	-48.3	266.8	254.7	12.07	22.103		
2,700.0	2,667.9	2,705.1	2,697.7	8.9	6.4	-170.27	86.8	-53.2	274.3	261.7	12.59	21.782		
2,800.0	2,766.1	2,804.8	2,796.6	9.3	6.6	-169.71	98.1	-58.0	281.8	268.7	13.12	21.483		
2,900.0	2,864.4	2,904.5	2,895.5	9.7	6.9	-169.18	109.5	-62.9	289.4	275.7	13.65	21.203		
3,000.0	2,962.6	3,004.1	2,994.4	10.1	7.2	-168.68	120.8	-67.7	297.0	282.8	14.18	20.942		
3,100.0	3,060.9	3,103.8	3,093.3	10.5	7.5	-168.21	132.1	-72.6	304.6	289.9	14.72	20.697		
3,200.0	3,159.1	3,203.5	3,192.3	10.9	7.8	-167.75	143.4	-77.4	312.2	297.0	15.26	20.467		
3,300.0	3,257.4	3,303.2	3,291.2	11.3	8.1	-167.32	154.7	-82.3	319.9	304.1	15.80	20.251		
3,400.0	3,355.7	3,402.9	3,390.1	11.7	8.4	-166.91	166.0	-87.2	327.6	311.2	16.34	20.047		
3,500.0	3,453.9	3,502.5	3,489.0	12.1	8.7	-166.52	177.4	-92.0	335.3	318.4	16.89	19.855		
3,600.0	3,552.2	3,602.2	3,587.9	12.5	9.0	-166.15	188.7	-96.9	343.0	325.5	17.43	19.673		
3,700.0	3,650.4	3,701.9	3,686.8	12.9	9.3	-165.79	200.0	-101.7	350.7	332.7	17.98	19.501		
3,800.0	3,748.7	3,801.6	3,785.7	13.3	9.6	-165.44	211.3	-106.6	358.4	339.9	18.53	19.338		
3,900.0	3,846.9	3,901.2	3,884.7	13.7	10.0	-165.12	222.6	-111.5	366.1	347.1	19.09	19.183		
4,000.0	3,945.2	4,000.9	3,983.6	14.1	10.3	-164.80	233.9	-116.3	373.9	354.3	19.64	19.036		
4,100.0	4,043.4	4,100.6	4,082.5	14.5	10.6	-164.50	245.2	-121.2	381.7	361.5	20.20	18.896		
4,200.0	4,141.7	4,200.3	4,181.4	15.0	10.9	-164.21	256.6	-126.0	389.4	368.7	20.76	18.763		
4,300.0	4,240.0	4,296.4	4,276.8	15.4	11.2	-163.96	267.3	-130.6	397.4	376.1	21.29	18.662		
4,400.0	4,338.2	4,385.6	4,365.6	15.8	11.4	-163.91	275.3	-134.1	407.3	385.6	21.74	18.733		
4,500.0	4,436.5	4,474.3	4,454.1	16.2	11.5	-164.07	280.7	-136.4	419.8	397.6	22.17	18.939		
4,600.0	4,534.7	4,562.3	4,542.0	16.6	11.7	-164.44	283.6	-137.6	434.8	412.3	22.56	19.272		
4,700.0	4,633.0	4,653.3	4,633.0	17.0	11.8	-164.98	284.1	-137.9	452.2	429.3	22.95	19.706		
4,800.0	4,731.2	4,751.5	4,731.2	17.4	12.0	-165.57	284.1	-137.9	470.2	446.9	23.37	20.126		
4,900.0	4,829.5	4,849.8	4,829.5	17.8	12.2	-166.11	284.1	-137.9	488.3	464.5	23.80	20.520		
5,000.0	4,927.7	4,948.0	4,927.7	18.2	12.4	-166.61	284.1	-137.9	506.4	482.1	24.23	20.899		

CC - Min centre to center distance or convergent point, SF - min separation factor, ES - min ellipse separation

Company:	Synergy Resources	Local Co-ordinate Reference:	Well SRC Wiedeman 21-5-3CHZ
Project:	Sec.5-T5N-R66W	TVD Reference:	WELL @ 4796.0ft (RKB - 13')
Reference Site:	SRC Wiedeman Pad Sec.5-T5N-R66W	MD Reference:	WELL @ 4796.0ft (RKB - 13')
Site Error:	0.0ft	North Reference:	True
Reference Well:	SRC Wiedeman 21-5-3CHZ	Survey Calculation Method:	Minimum Curvature
Well Error:	0.0ft	Output errors are at	2.00 sigma
Reference Wellbore	Wellbore #1	Database:	Landmark
Reference Design:	Plan #3 (10-10-14)	Offset TVD Reference:	Offset Datum

Offset Design												Offset Site Error:	0.0 ft
Survey Program: 0-MWD												Offset Well Error:	0.0 ft
Reference		Offset		Semi Major Axis			Distance						Warning
Measured Depth (ft)	Vertical Depth (ft)	Measured Depth (ft)	Vertical Depth (ft)	Reference (ft)	Offset (ft)	Highside Toolface (°)	Offset Wellbore Centre +N/-S (ft)	+E/-W (ft)	Between Centres (ft)	Between Ellipses (ft)	Minimum Separation (ft)	Separation Factor	
5,100.0	5,026.0	5,046.3	5,026.0	18.6	12.6	-167.08	284.1	-137.9	524.5	499.8	24.67	21.264	
5,200.0	5,124.3	5,144.5	5,124.3	19.0	12.8	-167.52	284.1	-137.9	542.7	517.5	25.11	21.614	
5,300.0	5,222.5	5,242.8	5,222.5	19.4	13.0	-167.93	284.1	-137.9	560.8	535.3	25.55	21.951	
5,400.0	5,320.8	5,341.1	5,320.8	19.9	13.2	-168.32	284.1	-137.9	579.0	553.1	25.99	22.276	
5,500.0	5,419.0	5,439.3	5,419.0	20.3	13.4	-168.68	284.1	-137.9	597.3	570.8	26.44	22.589	
5,549.1	5,467.3	5,487.6	5,467.3	20.5	13.4	-168.85	284.1	-137.9	606.2	579.6	26.66	22.739	
5,600.0	5,517.4	5,537.6	5,517.4	20.6	13.5	-169.04	284.1	-137.9	615.1	588.2	26.90	22.869	
5,700.0	5,616.2	5,636.5	5,616.2	20.9	13.7	-169.36	284.1	-137.9	630.0	602.7	27.31	23.066	
5,800.0	5,715.5	5,735.8	5,715.5	21.2	13.9	-169.59	284.1	-137.9	641.4	613.7	27.70	23.159	
5,900.0	5,815.2	5,835.5	5,815.2	21.4	14.1	-169.75	284.1	-137.9	649.5	621.4	28.05	23.153	
6,000.0	5,915.1	5,935.3	5,915.1	21.5	14.3	-169.84	284.1	-137.9	654.1	625.8	28.38	23.053	
6,084.9	6,000.0	6,020.3	6,000.0	21.7	14.5	-174.34	284.1	-137.9	655.4	619.7	35.63	18.392	
6,100.0	6,015.1	6,035.3	6,015.1	21.7	14.5	-174.34	284.1	-137.9	655.4	619.7	35.68	18.367	
6,200.0	6,115.1	6,135.3	6,115.1	21.8	14.7	-174.34	284.1	-137.9	655.4	619.3	36.02	18.195	
6,300.0	6,215.1	6,235.3	6,215.1	21.9	14.9	-174.34	284.1	-137.9	655.4	619.0	36.36	18.025	
6,400.0	6,315.1	6,335.3	6,315.1	22.1	15.1	-174.34	284.1	-137.9	655.4	618.7	36.70	17.858	
6,421.8	6,336.8	6,357.1	6,336.8	22.1	15.2	-174.34	284.1	-137.9	655.4	618.6	36.77	17.822	
6,450.0	6,365.0	6,388.4	6,368.1	22.1	15.2	95.95	284.1	-137.2	655.4	625.2	30.13	21.753	
6,500.0	6,414.9	6,443.7	6,423.2	22.2	15.3	95.92	284.2	-132.6	655.3	625.0	30.31	21.618	
6,550.0	6,464.4	6,499.0	6,477.8	22.3	15.4	95.85	284.2	-123.8	655.2	624.7	30.48	21.499	
6,600.0	6,513.2	6,554.2	6,531.4	22.3	15.5	95.75	284.3	-110.9	655.1	624.4	30.62	21.391	
6,650.0	6,561.2	6,609.3	6,583.8	22.4	15.6	95.63	284.5	-93.9	654.9	624.1	30.76	21.288	
6,700.0	6,608.1	6,664.2	6,634.6	22.4	15.6	95.47	284.6	-73.0	654.7	623.8	30.91	21.181	
6,750.0	6,653.7	6,719.0	6,683.5	22.5	15.7	95.28	284.8	-48.4	654.4	623.3	31.07	21.060	
6,800.0	6,697.7	6,773.5	6,730.1	22.5	15.7	95.06	285.0	-20.2	654.1	622.9	31.28	20.915	
6,850.0	6,740.0	6,827.8	6,774.3	22.6	15.8	94.82	285.2	11.3	653.8	622.3	31.54	20.733	
6,900.0	6,780.3	6,881.8	6,815.8	22.7	15.8	94.56	285.5	45.9	653.5	621.6	31.88	20.501	
6,950.0	6,818.4	6,935.6	6,854.4	22.7	15.9	94.27	285.8	83.3	653.2	620.8	32.32	20.212	
7,000.0	6,854.2	6,989.0	6,889.9	22.8	16.2	93.95	286.0	123.3	652.8	619.9	32.88	19.856	
7,050.0	6,887.5	7,042.1	6,922.1	22.9	16.5	93.62	286.4	165.5	652.5	618.9	33.58	19.430	
7,100.0	6,918.1	7,095.0	6,950.9	23.1	17.0	93.27	286.7	209.8	652.1	617.7	34.44	18.937	
7,150.0	6,945.9	7,147.4	6,976.2	23.2	17.6	92.91	287.0	255.7	651.8	616.4	35.46	18.384	
7,200.0	6,970.7	7,199.5	6,998.0	23.4	18.2	92.53	287.4	303.0	651.5	614.9	36.64	17.782	
7,250.0	6,992.4	7,251.3	7,016.1	23.7	19.0	92.14	287.7	351.5	651.2	613.2	37.98	17.146	
7,300.0	7,010.9	7,302.7	7,030.7	24.0	19.8	91.74	288.1	400.8	651.0	611.5	39.47	16.491	
7,350.0	7,026.1	7,353.8	7,041.5	24.4	20.6	91.34	288.5	450.7	650.7	609.6	41.10	15.833	
7,400.0	7,038.0	7,404.5	7,048.8	24.8	21.5	90.93	288.8	500.9	650.5	607.7	42.84	15.185	
7,450.0	7,046.5	7,454.8	7,052.5	25.4	22.5	90.51	289.2	551.1	650.3	605.7	44.67	14.559	
7,500.0	7,051.5	7,504.8	7,053.0	26.1	23.5	90.13	289.6	601.0	650.2	603.6	46.58	13.960	
7,546.8	7,053.0	7,551.5	7,053.0	26.8	24.5	90.00	289.9	647.8	650.1	601.7	48.45	13.418	
7,600.0	7,053.0	7,604.8	7,053.0	27.6	25.6	90.00	290.3	701.0	650.0	599.3	50.64	12.836	
7,700.0	7,053.0	7,704.8	7,053.0	29.4	27.8	90.00	291.0	801.0	649.8	594.8	54.97	11.820	
7,800.0	7,053.0	7,804.8	7,053.0	31.4	30.1	90.00	291.8	901.0	649.5	590.0	59.52	10.913	
7,900.0	7,053.0	7,904.8	7,053.0	33.5	32.5	90.00	292.5	1,001.0	649.3	585.1	64.24	10.108	
8,000.0	7,053.0	8,004.8	7,053.0	35.8	35.0	90.00	293.2	1,101.0	649.1	580.0	69.09	9.395	
8,100.0	7,053.0	8,104.8	7,053.0	38.1	37.5	90.00	294.0	1,201.0	648.9	574.8	74.05	8.762	
8,200.0	7,053.0	8,204.8	7,053.0	40.5	40.0	90.00	294.7	1,301.0	648.7	569.6	79.10	8.200	
8,300.0	7,053.0	8,304.8	7,053.0	42.9	42.6	90.00	295.4	1,401.0	648.4	564.2	84.22	7.699	
8,400.0	7,053.0	8,404.8	7,053.0	45.4	45.2	90.00	296.2	1,501.0	648.2	558.8	89.40	7.251	
8,500.0	7,053.0	8,504.8	7,053.0	48.0	47.8	90.00	296.9	1,601.0	648.0	553.4	94.63	6.848	
8,600.0	7,053.0	8,604.8	7,053.0	50.5	50.5	90.00	297.6	1,701.0	647.8	547.9	99.90	6.484	
8,700.0	7,053.0	8,704.8	7,053.0	53.1	53.1	90.00	298.4	1,801.0	647.6	542.4	105.21	6.155	

CC - Min centre to center distance or convergent point, SF - min separation factor, ES - min ellipse separation

SRC Wiedeman Pad Sec.5-T5N-R66W - SRC Wiedeman 11-5-3NCHZ - Wellbore #1 - Plan #3 (9-24-14)												Offset Site Error:	0.0 ft
Survey Program: 0-MWD												Offset Well Error:	0.0 ft
Reference		Offset		Semi Major Axis			Distance						
Measured Depth (ft)	Vertical Depth (ft)	Measured Depth (ft)	Vertical Depth (ft)	Reference (ft)	Offset (ft)	Highside Toolface (°)	Offset Wellbore Centre +N/-S (ft)	+E/-W (ft)	Between Centres (ft)	Between Ellipses (ft)	Minimum Separation (ft)	Separation Factor	Warning
8,800.0	7,053.0	8,804.8	7,053.0	55.7	55.8	90.00	299.1	1,901.0	647.3	536.8	110.55	5.856	
8,900.0	7,053.0	8,904.8	7,053.0	58.3	58.5	90.00	299.9	2,001.0	647.1	531.2	115.91	5.583	
9,000.0	7,053.0	9,004.8	7,053.0	61.0	61.2	90.00	300.6	2,101.0	646.9	525.6	121.30	5.333	
9,100.0	7,053.0	9,104.8	7,053.0	63.6	63.9	90.00	301.3	2,201.0	646.7	520.0	126.70	5.104	
9,200.0	7,053.0	9,204.8	7,053.0	66.3	66.6	90.00	302.1	2,301.0	646.5	514.3	132.13	4.893	
9,300.0	7,053.0	9,304.8	7,053.0	69.0	69.3	90.00	302.8	2,401.0	646.2	508.7	137.56	4.698	
9,400.0	7,053.0	9,404.8	7,053.0	71.7	72.1	90.00	303.5	2,501.0	646.0	503.0	143.02	4.517	
9,500.0	7,053.0	9,504.8	7,053.0	74.4	74.8	90.00	304.3	2,601.0	645.8	497.3	148.48	4.349	
9,600.0	7,053.0	9,604.8	7,053.0	77.1	77.5	90.00	305.0	2,701.0	645.6	491.6	153.96	4.193	
9,700.0	7,053.0	9,704.8	7,053.0	79.8	80.3	90.00	305.7	2,801.0	645.4	485.9	159.44	4.048	
9,800.0	7,053.0	9,804.8	7,053.0	82.5	83.0	90.00	306.5	2,900.9	645.1	480.2	164.94	3.912	
9,900.0	7,053.0	9,904.8	7,053.0	85.3	85.8	90.00	307.2	3,000.9	644.9	474.5	170.44	3.784	
10,000.0	7,053.0	10,004.8	7,053.0	88.0	88.6	90.00	307.9	3,100.9	644.7	468.8	175.95	3.664	
10,100.0	7,053.0	10,104.8	7,053.0	90.7	91.3	90.00	308.7	3,200.9	644.5	463.0	181.46	3.552	
10,200.0	7,053.0	10,204.8	7,053.0	93.5	94.1	90.00	309.4	3,300.9	644.3	457.3	186.98	3.446	
10,300.0	7,053.0	10,304.8	7,053.0	96.2	96.8	90.00	310.1	3,400.9	644.0	451.5	192.51	3.346	
10,400.0	7,053.0	10,404.8	7,053.0	99.0	99.6	90.00	310.9	3,500.9	643.8	445.8	198.04	3.251	
10,500.0	7,053.0	10,504.8	7,053.0	101.7	102.4	90.00	311.6	3,600.9	643.6	440.0	203.58	3.161	
10,600.0	7,053.0	10,604.8	7,053.0	104.5	105.1	90.00	312.3	3,700.9	643.4	434.3	209.12	3.077	
10,700.0	7,053.0	10,704.8	7,053.0	107.2	107.9	90.00	313.1	3,800.9	643.2	428.5	214.66	2.996	
10,800.0	7,053.0	10,804.8	7,053.0	110.0	110.7	90.00	313.8	3,900.9	642.9	422.7	220.21	2.920	
10,900.0	7,053.0	10,904.8	7,053.0	112.8	113.5	90.00	314.6	4,000.9	642.7	417.0	225.76	2.847	
11,000.0	7,053.0	11,004.8	7,053.0	115.5	116.3	90.00	315.3	4,100.9	642.5	411.2	231.31	2.778	
11,100.0	7,053.0	11,104.8	7,053.0	118.3	119.0	90.00	316.0	4,200.9	642.3	405.4	236.87	2.712	
11,200.0	7,053.0	11,204.8	7,053.0	121.1	121.8	90.00	316.8	4,300.9	642.1	399.6	242.43	2.648	
11,300.0	7,053.0	11,304.8	7,053.0	123.8	124.6	90.00	317.5	4,400.9	641.8	393.9	247.99	2.588	
11,400.0	7,053.0	11,404.8	7,053.0	126.6	127.4	90.00	318.2	4,500.9	641.6	388.1	253.56	2.530	
11,500.0	7,053.0	11,504.8	7,053.0	129.4	130.2	90.00	319.0	4,600.9	641.4	382.3	259.12	2.475	
11,600.0	7,053.0	11,604.8	7,053.0	132.2	132.9	90.00	319.7	4,700.9	641.2	376.5	264.69	2.422	
11,700.0	7,053.0	11,704.8	7,053.0	134.9	135.7	90.00	320.4	4,800.9	641.0	370.7	270.26	2.372	
11,800.0	7,053.0	11,804.8	7,053.0	137.7	138.5	90.00	321.2	4,900.9	640.7	364.9	275.84	2.323	
11,900.0	7,053.0	11,904.8	7,053.0	140.5	141.3	90.00	321.9	5,000.9	640.5	359.1	281.41	2.276	
12,000.0	7,053.0	12,004.8	7,053.0	143.3	144.1	90.00	322.6	5,100.9	640.3	353.3	286.99	2.231	
12,100.0	7,053.0	12,104.8	7,053.0	146.0	146.9	90.00	323.4	5,200.9	640.1	347.5	292.56	2.188	
12,200.0	7,053.0	12,204.8	7,053.0	148.8	149.7	90.00	324.1	5,300.9	639.9	341.7	298.14	2.146	
12,300.0	7,053.0	12,304.8	7,053.0	151.6	152.5	90.00	324.8	5,400.9	639.6	335.9	303.72	2.106	
12,400.0	7,053.0	12,404.8	7,053.0	154.4	155.3	90.00	325.6	5,500.9	639.4	330.1	309.30	2.067	
12,500.0	7,053.0	12,504.8	7,053.0	157.2	158.0	90.00	326.3	5,600.9	639.2	324.3	314.89	2.030	
12,600.0	7,053.0	12,604.8	7,053.0	160.0	160.8	90.00	327.0	5,700.9	639.0	318.5	320.47	1.994	
12,700.0	7,053.0	12,704.8	7,053.0	162.8	163.6	90.00	327.8	5,800.9	638.8	312.7	326.05	1.959	
12,800.0	7,053.0	12,804.8	7,053.0	165.5	166.4	90.00	328.5	5,900.9	638.5	306.9	331.64	1.925	
12,900.0	7,053.0	12,904.8	7,053.0	168.3	169.2	90.00	329.3	6,000.9	638.3	301.1	337.23	1.893	
13,000.0	7,053.0	13,004.8	7,053.0	171.1	172.0	90.00	330.0	6,100.9	638.1	295.3	342.81	1.861	
13,100.0	7,053.0	13,104.8	7,053.0	173.9	174.8	90.00	330.7	6,200.9	637.9	289.5	348.40	1.831	
13,200.0	7,053.0	13,204.8	7,053.0	176.7	177.6	90.00	331.5	6,300.8	637.7	283.7	353.99	1.801	
13,300.0	7,053.0	13,304.8	7,053.0	179.5	180.4	90.00	332.2	6,400.8	637.4	277.9	359.58	1.773	
13,400.0	7,053.0	13,404.8	7,053.0	182.3	183.2	90.00	332.9	6,500.8	637.2	272.1	365.17	1.745	
13,500.0	7,053.0	13,504.8	7,053.0	185.1	186.0	90.00	333.7	6,600.8	637.0	266.2	370.76	1.718	
13,600.0	7,053.0	13,604.8	7,053.0	187.9	188.8	90.00	334.4	6,700.8	636.8	260.4	376.36	1.692	
13,700.0	7,053.0	13,704.8	7,053.0	190.7	191.6	90.00	335.1	6,800.8	636.6	254.6	381.95	1.667	
13,800.0	7,053.0	13,804.8	7,053.0	193.4	194.4	90.00	335.9	6,900.8	636.3	248.8	387.54	1.642	
13,900.0	7,053.0	13,904.8	7,053.0	196.2	197.2	90.00	336.6	7,000.8	636.1	243.0	393.14	1.618	

Company:	Synergy Resources	Local Co-ordinate Reference:	Well SRC Wiedeman 21-5-3CHZ
Project:	Sec.5-T5N-R66W	TVD Reference:	WELL @ 4796.0ft (RKB - 13')
Reference Site:	SRC Wiedeman Pad Sec.5-T5N-R66W	MD Reference:	WELL @ 4796.0ft (RKB - 13')
Site Error:	0.0ft	North Reference:	True
Reference Well:	SRC Wiedeman 21-5-3CHZ	Survey Calculation Method:	Minimum Curvature
Well Error:	0.0ft	Output errors are at	2.00 sigma
Reference Wellbore	Wellbore #1	Database:	Landmark
Reference Design:	Plan #3 (10-10-14)	Offset TVD Reference:	Offset Datum

Offset Design SRC Wiedeman Pad Sec.5-T5N-R66W - SRC Wiedeman 11-5-3NCHZ - Wellbore #1 - Plan #3 (9-24-14)													Offset Site Error:	0.0 ft
Survey Program: 0-MWD													Offset Well Error:	0.0 ft
Reference		Offset		Semi Major Axis			Distance							Warning
Measured Depth (ft)	Vertical Depth (ft)	Measured Depth (ft)	Vertical Depth (ft)	Reference (ft)	Offset (ft)	Highside Toolface (°)	Offset Wellbore Centre +N/-S (ft)	+E/-W (ft)	Between Centres (ft)	Between Ellipses (ft)	Minimum Separation (ft)	Separation Factor		
14,000.0	7,053.0	14,004.8	7,053.0	199.0	200.0	90.00	337.3	7,100.8	635.9	237.2	398.73	1.595		
14,100.0	7,053.0	14,104.8	7,053.0	201.8	202.8	90.00	338.1	7,200.8	635.7	231.4	404.33	1.572		
14,200.0	7,053.0	14,204.8	7,053.0	204.6	205.6	90.00	338.8	7,300.8	635.5	225.5	409.92	1.550		
14,300.0	7,053.0	14,304.8	7,053.0	207.4	208.4	90.00	339.5	7,400.8	635.2	219.7	415.52	1.529		
14,400.0	7,053.0	14,404.8	7,053.0	210.2	211.2	90.00	340.3	7,500.8	635.0	213.9	421.11	1.508		
14,500.0	7,053.0	14,504.8	7,053.0	213.0	214.0	90.00	341.0	7,600.8	634.8	208.1	426.71	1.488	Level 3	
14,600.0	7,053.0	14,604.8	7,053.0	215.8	216.8	90.00	341.7	7,700.8	634.6	202.3	432.31	1.468	Level 3	
14,700.0	7,053.0	14,704.8	7,053.0	218.6	219.6	90.00	342.5	7,800.8	634.4	196.5	437.91	1.449	Level 3	
14,800.0	7,053.0	14,804.8	7,053.0	221.4	222.4	90.00	343.2	7,900.8	634.1	190.6	443.51	1.430	Level 3	
14,900.0	7,053.0	14,904.8	7,053.0	224.2	225.2	90.00	344.0	8,000.8	633.9	184.8	449.11	1.412	Level 3	
15,000.0	7,053.0	15,004.8	7,053.0	227.0	228.0	90.00	344.7	8,100.8	633.7	179.0	454.70	1.394	Level 3	
15,100.0	7,053.0	15,104.8	7,053.0	229.8	230.8	90.00	345.4	8,200.8	633.5	173.2	460.30	1.376	Level 3	
15,200.0	7,053.0	15,204.8	7,053.0	232.6	233.6	90.00	346.2	8,300.8	633.3	167.4	465.90	1.359	Level 3	
15,300.0	7,053.0	15,304.8	7,053.0	235.4	236.4	90.00	346.9	8,400.8	633.0	161.5	471.50	1.343	Level 3	
15,400.0	7,053.0	15,404.8	7,053.0	238.2	239.2	90.00	347.6	8,500.8	632.8	155.7	477.11	1.326	Level 3	
15,500.0	7,053.0	15,504.8	7,053.0	241.0	242.0	90.00	348.4	8,600.8	632.6	149.9	482.71	1.311	Level 3	
15,600.0	7,053.0	15,604.8	7,053.0	243.8	244.8	90.00	349.1	8,700.8	632.4	144.1	488.31	1.295	Level 3	
15,700.0	7,053.0	15,704.8	7,053.0	246.6	247.6	90.00	349.8	8,800.8	632.2	138.3	493.91	1.280	Level 3	
15,800.0	7,053.0	15,804.8	7,053.0	249.4	250.4	90.00	350.6	8,900.8	631.9	132.4	499.51	1.265	Level 3	
15,900.0	7,053.0	15,904.8	7,053.0	252.2	253.2	90.00	351.3	9,000.8	631.7	126.6	505.11	1.251	Level 3	
16,000.0	7,053.0	16,004.8	7,053.0	255.0	256.0	90.00	352.0	9,100.8	631.5	120.8	510.72	1.237	Level 2	
16,100.0	7,053.0	16,104.8	7,053.0	257.8	258.8	90.00	352.8	9,200.8	631.3	115.0	516.32	1.223	Level 2	
16,200.0	7,053.0	16,204.8	7,053.0	260.6	261.6	90.00	353.5	9,300.8	631.1	109.1	521.92	1.209	Level 2	
16,300.0	7,053.0	16,304.8	7,053.0	263.4	264.4	90.00	354.2	9,400.8	630.8	103.3	527.53	1.196	Level 2	
16,400.0	7,053.0	16,404.8	7,053.0	266.2	267.2	90.00	355.0	9,500.8	630.6	97.5	533.13	1.183	Level 2	
16,500.0	7,053.0	16,504.8	7,053.0	269.0	270.0	90.00	355.7	9,600.8	630.4	91.7	538.73	1.170	Level 2	
16,600.0	7,053.0	16,604.8	7,053.0	271.8	272.8	90.00	356.4	9,700.7	630.2	85.8	544.34	1.158	Level 2	
16,700.0	7,053.0	16,704.8	7,053.0	274.6	275.6	90.00	357.2	9,800.7	630.0	80.0	549.94	1.146	Level 2	
16,800.0	7,053.0	16,804.8	7,053.0	277.4	278.4	90.00	357.9	9,900.7	629.7	74.2	555.55	1.134	Level 2	
16,848.3	7,053.0	16,853.1	7,053.0	278.7	279.7	90.00	358.3	9,949.1	629.6	71.4	558.26	1.128	Level 2	
16,900.0	7,053.0	16,859.5	7,053.0	280.2	279.9	90.00	358.3	9,955.4	631.2	71.3	559.88	1.127	Level 2, SF	
16,916.1	7,053.0	16,859.5	7,053.0	280.6	279.9	90.00	358.3	9,955.4	632.5	72.1	560.33	1.129	Level 2	

Company:	Synergy Resources	Local Co-ordinate Reference:	Well SRC Wiedeman 21-5-3CHZ
Project:	Sec.5-T5N-R66W	TVD Reference:	WELL @ 4796.0ft (RKB - 13')
Reference Site:	SRC Wiedeman Pad Sec.5-T5N-R66W	MD Reference:	WELL @ 4796.0ft (RKB - 13')
Site Error:	0.0ft	North Reference:	True
Reference Well:	SRC Wiedeman 21-5-3CHZ	Survey Calculation Method:	Minimum Curvature
Well Error:	0.0ft	Output errors are at	2.00 sigma
Reference Wellbore	Wellbore #1	Database:	Landmark
Reference Design:	Plan #3 (10-10-14)	Offset TVD Reference:	Offset Datum

Offset Design SRC Wiedeman Pad Sec.5-T5N-R66W - SRC Wiedeman 12-5-4CHZ - Wellbore #1 - Plan #3 (9-24-14)													Offset Site Error:	0.0 ft
Survey Program: 0-MWD													Offset Well Error:	0.0 ft
Reference	Offset	Semi Major Axis			Distance									
Measured Depth (ft)	Vertical Depth (ft)	Measured Depth (ft)	Vertical Depth (ft)	Reference (ft)	Offset (ft)	Highside Toolface (°)	Offset Wellbore Centre +N/-S (ft)	+E/-W (ft)	Between Centres (ft)	Between Ellipses (ft)	Minimum Separation (ft)	Separation Factor	Warning	
0.0	0.0	0.0	0.0	0.0	0.0	-174.15	-59.7	-6.1	60.1					
100.0	100.0	100.0	100.0	0.1	0.1	-174.15	-59.7	-6.1	60.1	59.8	0.22	267.196		
200.0	200.0	200.0	200.0	0.3	0.3	-174.15	-59.7	-6.1	60.1	59.4	0.67	89.065		
300.0	300.0	300.0	300.0	0.6	0.6	-174.15	-59.7	-6.1	60.1	58.9	1.12	53.439		
400.0	400.0	400.0	400.0	0.8	0.8	-174.15	-59.7	-6.1	60.1	58.5	1.57	38.171		
500.0	500.0	500.0	500.0	1.0	1.0	-174.15	-59.7	-6.1	60.1	58.0	2.02	29.688 CC, ES		
600.0	600.0	600.0	600.0	1.2	1.2	-169.96	-59.7	-6.1	61.8	59.3	2.47	24.961		
700.0	699.8	699.8	699.8	1.5	1.5	-170.72	-59.7	-6.1	66.9	64.0	2.93	22.859		
800.0	799.5	799.5	799.5	1.7	1.7	-171.77	-59.7	-6.1	75.5	72.2	3.38	22.351 SF		
900.0	898.7	898.7	898.7	2.0	1.9	-172.88	-59.7	-6.1	87.6	83.8	3.83	22.877		
1,000.0	997.5	997.5	997.5	2.3	2.1	-173.92	-59.7	-6.1	103.2	98.9	4.28	24.110		
1,035.8	1,032.7	1,032.7	1,032.7	2.4	2.2	-174.26	-59.7	-6.1	109.6	105.1	4.44	24.683		
1,100.0	1,095.8	1,095.8	1,095.8	2.6	2.4	-174.83	-59.7	-6.1	121.5	116.7	4.73	25.669		
1,200.0	1,194.0	1,194.0	1,194.0	2.9	2.6	-175.51	-59.7	-6.1	140.0	134.8	5.19	26.969		
1,300.0	1,292.3	1,292.3	1,292.3	3.3	2.8	-176.04	-59.7	-6.1	158.5	152.9	5.65	28.045		
1,400.0	1,390.5	1,390.5	1,390.5	3.7	3.0	-176.45	-59.7	-6.1	177.1	171.0	6.12	28.948		
1,500.0	1,488.8	1,484.4	1,484.4	4.1	3.2	-176.54	-60.7	-6.9	196.7	190.1	6.56	29.990		
1,600.0	1,587.0	1,576.8	1,576.7	4.5	3.4	-176.08	-64.0	-9.6	218.6	211.6	6.98	31.302		
1,700.0	1,685.3	1,668.1	1,667.7	4.8	3.5	-175.25	-69.4	-14.1	243.0	235.6	7.42	32.773		
1,800.0	1,783.6	1,761.1	1,760.1	5.2	3.7	-174.20	-77.1	-20.3	269.6	261.7	7.86	34.303		
1,900.0	1,881.8	1,857.2	1,855.7	5.6	3.9	-173.25	-85.3	-27.0	296.6	288.3	8.31	35.693		
2,000.0	1,980.1	1,953.4	1,951.3	6.0	4.2	-172.46	-93.5	-33.7	323.7	314.9	8.77	36.920		
2,100.0	2,078.3	2,049.6	2,046.9	6.4	4.4	-171.78	-101.7	-40.4	350.8	341.6	9.23	38.006		
2,200.0	2,176.6	2,145.8	2,142.5	6.8	4.6	-171.21	-109.9	-47.2	378.0	368.3	9.70	38.974		
2,300.0	2,274.8	2,241.9	2,238.1	7.2	4.9	-170.71	-118.1	-53.9	405.1	395.0	10.17	39.829		
2,400.0	2,373.1	2,338.1	2,333.7	7.6	5.1	-170.28	-126.3	-60.6	432.3	421.7	10.65	40.605		
2,500.0	2,471.3	2,434.3	2,429.3	8.0	5.4	-169.90	-134.5	-67.3	459.6	448.5	11.13	41.301		
2,600.0	2,569.6	2,530.5	2,524.9	8.4	5.6	-169.56	-142.7	-74.0	486.8	475.2	11.61	41.931		
2,700.0	2,667.9	2,626.7	2,620.5	8.9	5.9	-169.25	-150.9	-80.7	514.1	502.0	12.10	42.503		
2,800.0	2,766.1	2,722.8	2,716.1	9.3	6.2	-168.98	-159.1	-87.4	541.4	528.8	12.58	43.024		
2,900.0	2,864.4	2,819.0	2,811.7	9.7	6.4	-168.73	-167.3	-94.2	568.6	555.6	13.07	43.500		
3,000.0	2,962.6	2,915.2	2,907.3	10.1	6.7	-168.51	-175.5	-100.9	595.9	582.4	13.56	43.937		
3,100.0	3,060.9	3,011.4	3,002.8	10.5	7.0	-168.30	-183.7	-107.6	623.2	609.2	14.06	44.338		
3,200.0	3,159.1	3,107.6	3,098.4	10.9	7.3	-168.11	-191.9	-114.3	650.6	636.0	14.55	44.709		
3,300.0	3,257.4	3,203.7	3,194.0	11.3	7.5	-167.94	-200.1	-121.0	677.9	662.8	15.05	45.051		
3,400.0	3,355.7	3,299.9	3,289.6	11.7	7.8	-167.78	-208.3	-127.7	705.2	689.6	15.54	45.369		
3,500.0	3,453.9	3,396.1	3,385.2	12.1	8.1	-167.63	-216.5	-134.4	732.5	716.5	16.04	45.664		
3,600.0	3,552.2	3,492.3	3,480.8	12.5	8.4	-167.50	-224.7	-141.2	759.8	743.3	16.54	45.939		
3,700.0	3,650.4	3,588.4	3,576.4	12.9	8.7	-167.37	-232.9	-147.9	787.2	770.1	17.04	46.195		

Offset Design		SRC Wiedeman Pad Sec.5-T5N-R66W - SRC Wiedeman 12-5-4NCHZ - Wellbore #1 - Plan #5 (10-03-1											Offset Site Error:	0.0 ft
Survey Program: 0-MWD													Offset Well Error:	0.0 ft
Reference		Offset		Semi Major Axis			Distance							Warning
Measured Depth (ft)	Vertical Depth (ft)	Measured Depth (ft)	Vertical Depth (ft)	Reference (ft)	Offset (ft)	Highside Toolface (°)	Offset Wellbore Centre +N/-S (ft)	+E/-W (ft)	Between Centres (ft)	Between Ellipses (ft)	Minimum Separation (ft)	Separation Factor		
0.0	0.0	0.0	0.0	0.0	0.0	-174.25	-74.7	-7.5	75.1					
100.0	100.0	100.0	100.0	0.1	0.1	-174.25	-74.7	-7.5	75.1	74.8	0.22	333.937		
200.0	200.0	200.0	200.0	0.3	0.3	-174.25	-74.7	-7.5	75.1	74.4	0.67	111.312		
300.0	300.0	300.0	300.0	0.6	0.6	-174.25	-74.7	-7.5	75.1	73.9	1.12	66.787		
400.0	400.0	400.0	400.0	0.8	0.8	-174.25	-74.7	-7.5	75.1	73.5	1.57	47.705		
500.0	500.0	500.0	500.0	1.0	1.0	-174.25	-74.7	-7.5	75.1	73.0	2.02	37.104 CC, ES		
600.0	600.0	600.0	600.0	1.2	1.2	-170.01	-74.7	-7.5	76.8	74.3	2.47	31.023		
700.0	699.8	699.8	699.8	1.5	1.5	-170.63	-74.7	-7.5	81.9	79.0	2.93	27.983		
800.0	799.5	799.5	799.5	1.7	1.7	-171.50	-74.7	-7.5	90.5	87.2	3.38	26.788 SF		
900.0	898.7	898.7	898.7	2.0	1.9	-172.47	-74.7	-7.5	102.6	98.8	3.83	26.789		
1,000.0	997.5	997.5	997.5	2.3	2.1	-173.43	-74.7	-7.5	118.1	113.9	4.28	27.607		
1,035.8	1,032.7	1,031.4	1,031.4	2.4	2.2	-173.71	-74.8	-7.6	124.7	120.3	4.43	28.152		
1,100.0	1,095.8	1,091.8	1,091.7	2.6	2.3	-174.01	-76.0	-8.2	137.8	133.1	4.71	29.286		
1,200.0	1,194.0	1,184.7	1,184.6	2.9	2.5	-174.00	-80.0	-10.1	160.6	155.5	5.13	31.335		
1,300.0	1,292.3	1,276.3	1,275.9	3.3	2.7	-173.60	-86.7	-13.3	186.3	180.7	5.55	33.550		
1,400.0	1,390.5	1,366.9	1,365.9	3.7	2.9	-172.98	-95.8	-17.6	214.7	208.7	5.99	35.854		
1,500.0	1,488.8	1,462.4	1,460.6	4.1	3.1	-172.36	-106.6	-22.8	244.4	237.9	6.43	37.996		
1,600.0	1,587.0	1,557.8	1,555.4	4.5	3.3	-171.87	-117.3	-27.9	274.0	267.1	6.88	39.844		
1,700.0	1,685.3	1,653.3	1,650.1	4.8	3.6	-171.48	-128.1	-33.1	303.7	296.4	7.33	41.432		
1,800.0	1,783.6	1,748.8	1,744.8	5.2	3.8	-171.15	-138.8	-38.2	333.4	325.6	7.79	42.805		
1,900.0	1,881.8	1,844.3	1,839.6	5.6	4.1	-170.88	-149.6	-43.4	363.1	354.8	8.25	44.005		
2,000.0	1,980.1	1,939.8	1,934.3	6.0	4.4	-170.66	-160.3	-48.5	392.7	384.0	8.72	45.045		
2,100.0	2,078.3	2,035.2	2,029.0	6.4	4.6	-170.46	-171.1	-53.7	422.4	413.3	9.19	45.972		
2,200.0	2,176.6	2,130.7	2,123.8	6.8	4.9	-170.29	-181.8	-58.8	452.1	442.5	9.66	46.794		
2,300.0	2,274.8	2,226.2	2,218.5	7.2	5.2	-170.14	-192.5	-64.0	481.8	471.7	10.14	47.527		
2,400.0	2,373.1	2,321.7	2,313.2	7.6	5.5	-170.00	-203.3	-69.1	511.6	500.9	10.62	48.185		
2,500.0	2,471.3	2,417.2	2,408.0	8.0	5.8	-169.89	-214.0	-74.3	541.3	530.2	11.10	48.778		
2,600.0	2,569.6	2,512.6	2,502.7	8.4	6.1	-169.78	-224.8	-79.4	571.0	559.4	11.58	49.314		
2,700.0	2,667.9	2,608.1	2,597.4	8.9	6.4	-169.69	-235.5	-84.6	600.7	588.6	12.06	49.802		
2,800.0	2,766.1	2,703.6	2,692.1	9.3	6.7	-169.60	-246.3	-89.7	630.4	617.9	12.55	50.246		
2,900.0	2,864.4	2,799.1	2,786.9	9.7	7.0	-169.52	-257.0	-94.9	660.1	647.1	13.03	50.653		
3,000.0	2,962.6	2,894.6	2,881.6	10.1	7.3	-169.45	-267.8	-100.0	689.8	676.3	13.52	51.027		
3,100.0	3,060.9	2,990.0	2,976.3	10.5	7.6	-169.38	-278.5	-105.2	719.5	705.5	14.01	51.371		
3,200.0	3,159.1	3,085.5	3,071.1	10.9	7.9	-169.32	-289.3	-110.3	749.3	734.8	14.50	51.688		
3,300.0	3,257.4	3,181.0	3,165.8	11.3	8.2	-169.27	-300.0	-115.5	779.0	764.0	14.99	51.983		

Company:	Synergy Resources	Local Co-ordinate Reference:	Well SRC Wiedeman 21-5-3CHZ
Project:	Sec.5-T5N-R66W	TVD Reference:	WELL @ 4796.0ft (RKB - 13')
Reference Site:	SRC Wiedeman Pad Sec.5-T5N-R66W	MD Reference:	WELL @ 4796.0ft (RKB - 13')
Site Error:	0.0ft	North Reference:	True
Reference Well:	SRC Wiedeman 21-5-3CHZ	Survey Calculation Method:	Minimum Curvature
Well Error:	0.0ft	Output errors are at	2.00 sigma
Reference Wellbore	Wellbore #1	Database:	Landmark
Reference Design:	Plan #3 (10-10-14)	Offset TVD Reference:	Offset Datum

Offset Design													Offset Site Error:	0.0 ft
Survey Program: 0-MWD													Offset Well Error:	0.0 ft
Reference		Offset		Semi Major Axis			Distance							Warning
Measured Depth (ft)	Vertical Depth (ft)	Measured Depth (ft)	Vertical Depth (ft)	Reference (ft)	Offset (ft)	Highside Toolface (°)	Offset Wellbore Centre +N/-S (ft)	+E/-W (ft)	Between Centres (ft)	Between Ellipses (ft)	Minimum Separation (ft)	Separation Factor		
0.0	0.0	0.0	0.0	0.0	0.0	-173.62	-14.9	-1.7	15.0	15.0	0.00	N/A		
100.0	100.0	100.0	100.0	0.1	0.1	-173.62	-14.9	-1.7	15.0	14.8	0.22	66.869		
200.0	200.0	200.0	200.0	0.3	0.3	-173.62	-14.9	-1.7	15.0	14.4	0.67	22.290		
300.0	300.0	300.0	300.0	0.6	0.6	-173.62	-14.9	-1.7	15.0	13.9	1.12	13.374		
400.0	400.0	400.0	400.0	0.8	0.8	-173.62	-14.9	-1.7	15.0	13.5	1.57	9.553		
500.0	500.0	500.0	500.0	1.0	1.0	-173.62	-14.9	-1.7	15.0	13.0	2.02	7.430 CC		
600.0	600.0	600.0	600.0	1.2	1.2	-170.27	-14.9	-1.7	16.7	14.3	2.47	6.767		
700.0	699.8	699.8	699.8	1.5	1.5	-172.57	-14.9	-1.7	21.9	19.0	2.93	7.487		
800.0	799.5	799.5	799.5	1.7	1.7	-174.66	-14.9	-1.7	30.6	27.2	3.38	9.050		
900.0	898.7	898.7	898.7	2.0	1.9	-176.17	-14.9	-1.7	42.7	38.9	3.83	11.159		
1,000.0	997.5	997.5	997.5	2.3	2.1	-177.18	-14.9	-1.7	58.4	54.1	4.28	13.641		
1,035.8	1,032.7	1,033.4	1,033.4	2.4	2.2	-177.43	-14.7	-1.7	64.6	60.2	4.44	14.553		
1,100.0	1,095.8	1,098.3	1,098.3	2.6	2.4	-177.64	-13.3	-2.0	75.1	70.4	4.73	15.877		
1,200.0	1,194.0	1,200.3	1,200.1	2.9	2.6	-177.53	-8.1	-3.2	88.6	83.4	5.19	17.077		
1,300.0	1,292.3	1,303.1	1,302.5	3.3	2.8	-177.06	0.7	-5.1	98.6	93.0	5.66	17.427		
1,400.0	1,390.5	1,406.5	1,405.1	3.7	3.1	-176.29	13.2	-7.9	105.2	99.0	6.14	17.120		
1,500.0	1,488.8	1,507.0	1,504.5	4.1	3.3	-175.37	27.6	-11.0	109.4	102.8	6.63	16.504		
1,600.0	1,587.0	1,606.9	1,603.3	4.5	3.6	-174.51	41.9	-14.2	113.7	106.5	7.12	15.956		
1,700.0	1,685.3	1,706.7	1,702.1	4.8	3.9	-173.72	56.3	-17.3	117.9	110.3	7.62	15.470		
1,800.0	1,783.6	1,806.6	1,800.9	5.2	4.2	-172.98	70.6	-20.5	122.2	114.1	8.13	15.039		
1,900.0	1,881.8	1,906.5	1,899.7	5.6	4.5	-172.30	85.0	-23.6	126.5	117.9	8.63	14.652		
2,000.0	1,980.1	2,006.4	1,998.6	6.0	4.8	-171.66	99.3	-26.8	130.8	121.7	9.15	14.302		
2,100.0	2,078.3	2,106.3	2,097.4	6.4	5.2	-171.06	113.7	-29.9	135.2	125.5	9.66	13.986		
2,200.0	2,176.6	2,206.2	2,196.2	6.8	5.5	-170.49	128.1	-33.1	139.5	129.3	10.18	13.699		
2,300.0	2,274.8	2,306.1	2,295.0	7.2	5.8	-169.96	142.4	-36.3	143.9	133.2	10.71	13.436		
2,400.0	2,373.1	2,406.0	2,393.8	7.6	6.1	-169.47	156.8	-39.4	148.2	137.0	11.23	13.195		
2,500.0	2,471.3	2,505.9	2,492.6	8.0	6.5	-169.00	171.1	-42.6	152.6	140.9	11.76	12.974		
2,600.0	2,569.6	2,605.8	2,591.4	8.4	6.8	-168.55	185.5	-45.7	157.0	144.7	12.30	12.769		
2,700.0	2,667.9	2,705.7	2,690.2	8.9	7.1	-168.14	199.8	-48.9	161.4	148.6	12.83	12.580		
2,800.0	2,766.1	2,805.6	2,789.0	9.3	7.5	-167.74	214.2	-52.0	165.8	152.5	13.37	12.404		
2,900.0	2,864.4	2,905.5	2,887.8	9.7	7.8	-167.36	228.5	-55.2	170.2	156.3	13.91	12.241		
3,000.0	2,962.6	3,005.4	2,986.6	10.1	8.2	-167.01	242.9	-58.3	174.7	160.2	14.45	12.088		
3,100.0	3,060.9	3,105.3	3,085.5	10.5	8.5	-166.67	257.2	-61.5	179.1	164.1	14.99	11.945		
3,200.0	3,159.1	3,205.2	3,184.3	10.9	8.8	-166.34	271.6	-64.7	183.5	168.0	15.54	11.812		
3,300.0	3,257.4	3,305.1	3,283.1	11.3	9.2	-166.04	285.9	-67.8	188.0	171.9	16.09	11.686		
3,400.0	3,355.7	3,405.0	3,381.9	11.7	9.5	-165.74	300.3	-71.0	192.4	175.8	16.63	11.568		
3,500.0	3,453.9	3,504.9	3,480.7	12.1	9.9	-165.46	314.7	-74.1	196.9	179.7	17.18	11.457		
3,600.0	3,552.2	3,604.8	3,579.5	12.5	10.2	-165.19	329.0	-77.3	201.3	183.6	17.73	11.352		
3,700.0	3,650.4	3,704.7	3,678.3	12.9	10.6	-164.94	343.4	-80.4	205.8	187.5	18.29	11.253		
3,800.0	3,748.7	3,804.6	3,777.1	13.3	10.9	-164.69	357.7	-83.6	210.3	191.4	18.84	11.159		
3,900.0	3,846.9	3,904.5	3,875.9	13.7	11.2	-164.46	372.1	-86.7	214.7	195.3	19.40	11.070		
4,000.0	3,945.2	4,004.4	3,974.7	14.1	11.6	-164.23	386.4	-89.9	219.2	199.2	19.95	10.986		
4,100.0	4,043.4	4,104.3	4,073.5	14.5	11.9	-164.02	400.8	-93.1	223.7	203.2	20.51	10.905		
4,200.0	4,141.7	4,204.2	4,172.4	15.0	12.3	-163.81	415.1	-96.2	228.1	207.1	21.07	10.829		
4,300.0	4,240.0	4,304.1	4,271.2	15.4	12.6	-163.61	429.5	-99.4	232.6	211.0	21.63	10.756		
4,400.0	4,338.2	4,403.9	4,370.0	15.8	13.0	-163.42	443.8	-102.5	237.1	214.9	22.19	10.687		
4,500.0	4,436.5	4,503.8	4,468.8	16.2	13.3	-163.23	458.2	-105.7	241.6	218.8	22.75	10.620		
4,600.0	4,534.7	4,603.7	4,567.6	16.6	13.7	-163.05	472.6	-108.8	246.1	222.8	23.31	10.557		
4,700.0	4,633.0	4,700.0	4,663.0	17.0	14.0	-163.01	485.2	-111.6	251.8	227.9	23.82	10.570		
4,800.0	4,731.2	4,789.2	4,751.7	17.4	14.2	-163.23	494.1	-113.6	260.3	236.0	24.24	10.738		
4,900.0	4,829.5	4,880.8	4,843.1	17.8	14.4	-163.71	500.4	-114.9	271.7	247.1	24.63	11.034		
5,000.0	4,927.7	4,971.6	4,933.8	18.2	14.5	-164.38	503.8	-115.7	286.1	261.1	24.98	11.452		

CC - Min centre to center distance or convergent point, SF - min separation factor, ES - min ellipse separation

Company:	Synergy Resources	Local Co-ordinate Reference:	Well SRC Wiedeman 21-5-3CHZ
Project:	Sec.5-T5N-R66W	TVD Reference:	WELL @ 4796.0ft (RKB - 13')
Reference Site:	SRC Wiedeman Pad Sec.5-T5N-R66W	MD Reference:	WELL @ 4796.0ft (RKB - 13')
Site Error:	0.0ft	North Reference:	True
Reference Well:	SRC Wiedeman 21-5-3CHZ	Survey Calculation Method:	Minimum Curvature
Well Error:	0.0ft	Output errors are at	2.00 sigma
Reference Wellbore	Wellbore #1	Database:	Landmark
Reference Design:	Plan #3 (10-10-14)	Offset TVD Reference:	Offset Datum

Offset Design												Offset Site Error:	0.0 ft
Survey Program: 0-MWD												Offset Well Error:	0.0 ft
Reference		Offset		Semi Major Axis			Distance						
Measured Depth (ft)	Vertical Depth (ft)	Measured Depth (ft)	Vertical Depth (ft)	Reference (ft)	Offset (ft)	Highside Toolface (°)	Offset Wellbore Centre +N/-S (ft)	+E/-W (ft)	Between Centres (ft)	Between Ellipses (ft)	Minimum Separation (ft)	Separation Factor	Warning
5,100.0	5,026.0	5,063.8	5,026.0	18.6	14.6	-165.21	504.6	-115.9	303.3	278.0	25.32	11.977	
5,200.0	5,124.3	5,162.1	5,124.3	19.0	14.8	-166.05	504.6	-115.9	321.4	295.7	25.70	12.505	
5,300.0	5,222.5	5,260.3	5,222.5	19.4	15.0	-166.81	504.6	-115.9	339.4	313.4	26.09	13.010	
5,400.0	5,320.8	5,358.6	5,320.8	19.9	15.1	-167.49	504.6	-115.9	357.6	331.1	26.49	13.497	
5,500.0	5,419.0	5,456.8	5,419.0	20.3	15.3	-168.10	504.6	-115.9	375.8	348.9	26.90	13.967	
5,549.1	5,467.3	5,505.1	5,467.3	20.5	15.4	-168.38	504.6	-115.9	384.7	357.6	27.11	14.192	
5,600.0	5,517.4	5,555.2	5,517.4	20.6	15.5	-168.68	504.6	-115.9	393.6	366.3	27.32	14.405	
5,700.0	5,616.2	5,654.0	5,616.2	20.9	15.6	-169.15	504.6	-115.9	408.4	380.7	27.70	14.746	
5,800.0	5,715.5	5,753.3	5,715.5	21.2	15.8	-169.49	504.6	-115.9	419.9	391.8	28.05	14.969	
5,900.0	5,815.2	5,853.0	5,815.2	21.4	16.0	-169.72	504.6	-115.9	427.9	399.6	28.38	15.080	
6,000.0	5,915.1	5,952.9	5,915.1	21.5	16.1	-169.85	504.6	-115.9	432.6	403.9	28.68	15.085	
6,084.9	6,000.0	6,037.8	6,000.0	21.7	16.3	-174.36	504.6	-115.9	433.8	396.3	37.47	11.577	
6,100.0	6,015.1	6,052.9	6,015.1	21.7	16.3	-174.36	504.6	-115.9	433.8	396.3	37.52	11.563	
6,200.0	6,115.1	6,152.9	6,115.1	21.8	16.5	-174.36	504.6	-115.9	433.8	396.0	37.83	11.467	
6,300.0	6,215.1	6,252.9	6,215.1	21.9	16.7	-174.36	504.6	-115.9	433.8	395.7	38.15	11.373	
6,400.0	6,315.1	6,352.9	6,315.1	22.1	16.9	-174.36	504.6	-115.9	433.8	395.4	38.46	11.279	
6,421.8	6,336.8	6,374.6	6,336.8	22.1	16.9	-174.36	504.6	-115.9	433.8	395.3	38.53	11.259	
6,450.0	6,365.0	6,402.8	6,365.0	22.1	17.0	96.01	504.6	-115.9	433.9	403.5	30.40	14.272	
6,500.0	6,414.9	6,452.7	6,414.9	22.2	17.0	96.46	504.6	-115.9	434.3	403.6	30.64	14.173	
6,550.0	6,464.4	6,502.2	6,464.4	22.3	17.1	97.32	504.6	-115.9	435.2	404.2	30.91	14.080	
6,600.0	6,513.2	6,551.7	6,513.9	22.3	17.2	98.57	504.6	-115.8	436.6	405.5	31.20	13.997	
6,650.0	6,561.2	6,605.9	6,568.0	22.4	17.3	100.06	504.6	-113.3	438.6	407.1	31.48	13.931	
6,700.0	6,608.1	6,661.2	6,622.8	22.4	17.4	101.50	504.7	-106.4	440.8	409.0	31.74	13.888	
6,750.0	6,653.7	6,717.5	6,678.0	22.5	17.5	102.89	504.7	-95.1	443.1	411.2	31.96	13.867	
6,800.0	6,697.7	6,775.0	6,733.3	22.5	17.5	104.21	504.9	-79.1	445.6	413.5	32.14	13.865	
6,850.0	6,740.0	6,833.6	6,788.0	22.6	17.6	105.46	505.0	-58.3	448.2	415.9	32.30	13.877	
6,900.0	6,780.3	6,893.3	6,841.9	22.7	17.7	106.63	505.2	-32.6	450.7	418.3	32.44	13.894	
6,950.0	6,818.4	6,954.1	6,894.4	22.7	17.7	107.71	505.4	-1.9	453.3	420.7	32.60	13.903	
7,000.0	6,854.2	7,016.0	6,944.9	22.8	17.8	108.70	505.7	33.7	455.7	422.9	32.82	13.885	
7,050.0	6,887.5	7,078.8	6,992.8	22.9	17.9	109.57	506.0	74.3	457.9	424.8	33.12	13.828	
7,100.0	6,918.1	7,142.5	7,037.6	23.1	18.0	110.33	506.3	119.5	460.0	426.4	33.54	13.714	
7,150.0	6,945.9	7,207.0	7,078.7	23.2	18.2	110.97	506.7	169.2	461.7	427.5	34.14	13.523	
7,200.0	6,970.7	7,272.2	7,115.5	23.4	18.5	111.49	507.1	223.0	463.1	428.1	34.96	13.246	
7,250.0	6,992.4	7,337.9	7,147.5	23.7	19.0	111.87	507.5	280.3	464.1	428.1	36.02	12.883	
7,300.0	7,010.9	7,403.9	7,174.3	24.0	19.7	112.11	507.9	340.7	464.7	427.4	37.35	12.443	
7,350.0	7,026.1	7,470.2	7,195.4	24.4	20.6	112.22	508.4	403.4	464.9	426.0	38.95	11.935	
7,400.0	7,038.0	7,536.4	7,210.7	24.8	21.6	112.19	508.8	467.9	464.7	423.9	40.80	11.388	
7,450.0	7,046.5	7,602.6	7,219.9	25.4	22.7	112.01	509.3	533.4	464.0	421.1	42.88	10.821	
7,500.0	7,051.5	7,668.4	7,223.0	26.1	24.0	111.70	509.8	599.1	462.9	417.8	45.15	10.252	
7,546.8	7,053.0	7,715.4	7,223.0	26.8	24.9	111.58	510.1	646.1	462.3	415.2	47.11	9.813	
7,600.0	7,053.0	7,768.7	7,223.0	27.6	26.0	111.58	510.5	699.4	462.2	413.0	49.13	9.406	
7,700.0	7,053.0	7,868.7	7,223.0	29.4	28.1	111.59	511.2	799.4	462.0	408.8	53.11	8.698	
7,800.0	7,053.0	7,968.7	7,223.0	31.4	30.4	111.60	512.0	899.4	461.8	404.5	57.30	8.059	
7,900.0	7,053.0	8,068.7	7,223.0	33.5	32.7	111.61	512.7	999.4	461.6	399.9	61.65	7.487	
8,000.0	7,053.0	8,168.7	7,223.0	35.8	35.1	111.62	513.4	1,099.4	461.4	395.2	66.13	6.977	
8,100.0	7,053.0	8,268.7	7,223.0	38.1	37.6	111.63	514.2	1,199.3	461.2	390.5	70.71	6.522	
8,200.0	7,053.0	8,368.7	7,223.0	40.5	40.1	111.64	514.9	1,299.3	461.0	385.6	75.38	6.115	
8,300.0	7,053.0	8,468.7	7,223.0	42.9	42.6	111.65	515.6	1,399.3	460.8	380.7	80.13	5.751	
8,400.0	7,053.0	8,568.7	7,223.0	45.4	45.2	111.66	516.3	1,499.3	460.6	375.7	84.93	5.423	
8,500.0	7,053.0	8,668.7	7,223.0	48.0	47.8	111.67	517.1	1,599.3	460.4	370.6	89.78	5.128	
8,600.0	7,053.0	8,768.7	7,223.0	50.5	50.4	111.68	517.8	1,699.3	460.2	365.5	94.67	4.861	
8,700.0	7,053.0	8,868.7	7,223.0	53.1	53.1	111.69	518.5	1,799.3	460.0	360.4	99.59	4.619	

CC - Min centre to center distance or convergent point, SF - min separation factor, ES - min ellipse separation

SRC Wiedeman Pad Sec.5-T5N-R66W - SRC Wiedeman 21-5-3NBHZ - Wellbore #1 - Plan #3 (9-24-14)													Offset Site Error:	0.0 ft
Survey Program: 0-MWD													Offset Well Error:	0.0 ft
Reference		Offset		Semi Major Axis			Distance							
Measured Depth	Vertical Depth	Measured Depth	Vertical Depth	Reference	Offset	Highside Toolface	Offset Wellbore Centre		Between Centres	Between Ellipses	Minimum Separation	Separation Factor	Warning	
(ft)	(ft)	(ft)	(ft)	(ft)	(ft)	(°)	+N/-S (ft)	+E/-W (ft)	(ft)	(ft)	(ft)			
8,800.0	7,053.0	8,968.7	7,223.0	55.7	55.7	111.70	519.2	1,899.3	459.8	355.2	104.55	4.398		
8,900.0	7,053.0	9,068.7	7,223.0	58.3	58.4	111.71	520.0	1,999.3	459.6	350.1	109.54	4.196		
9,000.0	7,053.0	9,168.7	7,223.0	61.0	61.1	111.72	520.7	2,099.3	459.4	344.9	114.54	4.011		
9,100.0	7,053.0	9,268.7	7,223.0	63.6	63.8	111.73	521.4	2,199.3	459.2	339.6	119.57	3.840		
9,200.0	7,053.0	9,368.7	7,223.0	66.3	66.5	111.74	522.2	2,299.3	459.0	334.4	124.61	3.683		
9,300.0	7,053.0	9,468.7	7,223.0	69.0	69.2	111.75	522.9	2,399.3	458.8	329.1	129.67	3.538		
9,400.0	7,053.0	9,568.7	7,223.0	71.7	71.9	111.76	523.6	2,499.3	458.6	323.9	134.74	3.404		
9,500.0	7,053.0	9,668.7	7,223.0	74.4	74.6	111.77	524.3	2,599.3	458.4	318.6	139.82	3.278		
9,600.0	7,053.0	9,768.7	7,223.0	77.1	77.3	111.78	525.1	2,699.3	458.2	313.3	144.92	3.162		
9,700.0	7,053.0	9,868.7	7,223.0	79.8	80.1	111.79	525.8	2,799.3	458.0	308.0	150.02	3.053		
9,800.0	7,053.0	9,968.7	7,223.0	82.5	82.8	111.80	526.5	2,899.3	457.8	302.7	155.13	2.951		
9,900.0	7,053.0	10,068.7	7,223.0	85.3	85.6	111.81	527.3	2,999.3	457.6	297.4	160.25	2.856		
10,000.0	7,053.0	10,168.7	7,223.0	88.0	88.3	111.82	528.0	3,099.3	457.4	292.0	165.38	2.766		
10,100.0	7,053.0	10,268.7	7,223.0	90.7	91.1	111.83	528.7	3,199.3	457.2	286.7	170.51	2.682		
10,200.0	7,053.0	10,368.7	7,223.0	93.5	93.8	111.84	529.4	3,299.3	457.0	281.4	175.64	2.602		
10,300.0	7,053.0	10,468.7	7,223.0	96.2	96.6	111.85	530.2	3,399.3	456.8	276.0	180.79	2.527		
10,400.0	7,053.0	10,568.7	7,223.0	99.0	99.4	111.86	530.9	3,499.3	456.6	270.7	185.93	2.456		
10,500.0	7,053.0	10,668.7	7,223.0	101.7	102.1	111.87	531.6	3,599.3	456.4	265.3	191.08	2.389		
10,600.0	7,053.0	10,768.7	7,223.0	104.5	104.9	111.88	532.3	3,699.3	456.2	260.0	196.24	2.325		
10,700.0	7,053.0	10,868.7	7,223.0	107.2	107.7	111.89	533.1	3,799.3	456.0	254.6	201.39	2.264		
10,800.0	7,053.0	10,968.7	7,223.0	110.0	110.4	111.90	533.8	3,899.3	455.8	249.3	206.55	2.207		
10,900.0	7,053.0	11,068.7	7,223.0	112.8	113.2	111.91	534.5	3,999.3	455.6	243.9	211.72	2.152		
11,000.0	7,053.0	11,168.7	7,223.0	115.5	116.0	111.92	535.3	4,099.3	455.4	238.6	216.88	2.100		
11,100.0	7,053.0	11,268.7	7,223.0	118.3	118.7	111.93	536.0	4,199.3	455.2	233.2	222.05	2.050		
11,200.0	7,053.0	11,368.7	7,223.0	121.1	121.5	111.94	536.7	4,299.3	455.1	227.8	227.22	2.003		
11,300.0	7,053.0	11,468.7	7,223.0	123.8	124.3	111.95	537.4	4,399.3	454.9	222.5	232.39	1.957		
11,400.0	7,053.0	11,568.7	7,223.0	126.6	127.1	111.96	538.2	4,499.3	454.7	217.1	237.57	1.914		
11,500.0	7,053.0	11,668.7	7,223.0	129.4	129.9	111.97	538.9	4,599.3	454.5	211.7	242.74	1.872		
11,600.0	7,053.0	11,768.7	7,223.0	132.2	132.6	111.98	539.6	4,699.2	454.3	206.3	247.92	1.832		
11,700.0	7,053.0	11,868.7	7,223.0	134.9	135.4	111.99	540.4	4,799.2	454.1	201.0	253.10	1.794		
11,800.0	7,053.0	11,968.7	7,223.0	137.7	138.2	112.00	541.1	4,899.2	453.9	195.6	258.28	1.757		
11,900.0	7,053.0	12,068.7	7,223.0	140.5	141.0	112.01	541.8	4,999.2	453.7	190.2	263.46	1.722		
12,000.0	7,053.0	12,168.7	7,223.0	143.3	143.8	112.02	542.5	5,099.2	453.5	184.8	268.64	1.688		
12,100.0	7,053.0	12,268.7	7,223.0	146.0	146.6	112.03	543.3	5,199.2	453.3	179.5	273.82	1.655		
12,200.0	7,053.0	12,368.7	7,223.0	148.8	149.4	112.04	544.0	5,299.2	453.1	174.1	279.00	1.624		
12,300.0	7,053.0	12,468.7	7,223.0	151.6	152.1	112.05	544.7	5,399.2	452.9	168.7	284.19	1.594		
12,400.0	7,053.0	12,568.7	7,223.0	154.4	154.9	112.06	545.4	5,499.2	452.7	163.3	289.37	1.564		
12,500.0	7,053.0	12,668.7	7,223.0	157.2	157.7	112.07	546.2	5,599.2	452.5	157.9	294.55	1.536		
12,600.0	7,053.0	12,768.7	7,223.0	160.0	160.5	112.08	546.9	5,699.2	452.3	152.6	299.74	1.509		
12,700.0	7,053.0	12,868.7	7,223.0	162.8	163.3	112.09	547.6	5,799.2	452.1	147.2	304.93	1.483 Level 3		
12,800.0	7,053.0	12,968.6	7,223.0	165.5	166.1	112.10	548.4	5,899.2	451.9	141.8	310.11	1.457 Level 3		
12,900.0	7,053.0	13,068.6	7,223.0	168.3	168.9	112.11	549.1	5,999.2	451.7	136.4	315.30	1.433 Level 3		
13,000.0	7,053.0	13,168.6	7,223.0	171.1	171.7	112.12	549.8	6,099.2	451.5	131.0	320.48	1.409 Level 3		
13,100.0	7,053.0	13,268.6	7,223.0	173.9	174.5	112.13	550.5	6,199.2	451.3	125.6	325.67	1.386 Level 3		
13,200.0	7,053.0	13,368.6	7,223.0	176.7	177.3	112.14	551.3	6,299.2	451.1	120.3	330.86	1.363 Level 3		
13,300.0	7,053.0	13,468.6	7,223.0	179.5	180.1	112.15	552.0	6,399.2	450.9	114.9	336.04	1.342 Level 3		
13,400.0	7,053.0	13,568.6	7,223.0	182.3	182.9	112.16	552.7	6,499.2	450.7	109.5	341.23	1.321 Level 3		
13,500.0	7,053.0	13,668.6	7,223.0	185.1	185.6	112.17	553.4	6,599.2	450.5	104.1	346.42	1.301 Level 3		
13,600.0	7,053.0	13,768.6	7,223.0	187.9	188.4	112.18	554.2	6,699.2	450.3	98.7	351.60	1.281 Level 3		
13,700.0	7,053.0	13,868.6	7,223.0	190.7	191.2	112.19	554.9	6,799.2	450.1	93.3	356.79	1.262 Level 3		
13,800.0	7,053.0	13,968.6	7,223.0	193.4	194.0	112.20	555.6	6,899.2	449.9	88.0	361.98	1.243 Level 2		
13,900.0	7,053.0	14,068.6	7,223.0	196.2	196.8	112.21	556.4	6,999.2	449.7	82.6	367.17	1.225 Level 2		

Company:	Synergy Resources	Local Co-ordinate Reference:	Well SRC Wiedeman 21-5-3CHZ
Project:	Sec.5-T5N-R66W	TVD Reference:	WELL @ 4796.0ft (RKB - 13')
Reference Site:	SRC Wiedeman Pad Sec.5-T5N-R66W	MD Reference:	WELL @ 4796.0ft (RKB - 13')
Site Error:	0.0ft	North Reference:	True
Reference Well:	SRC Wiedeman 21-5-3CHZ	Survey Calculation Method:	Minimum Curvature
Well Error:	0.0ft	Output errors are at	2.00 sigma
Reference Wellbore	Wellbore #1	Database:	Landmark
Reference Design:	Plan #3 (10-10-14)	Offset TVD Reference:	Offset Datum

Offset Design SRC Wiedeman Pad Sec.5-T5N-R66W - SRC Wiedeman 21-5-3NBHZ - Wellbore #1 - Plan #3 (9-24-14)													Offset Site Error:	0.0 ft
Survey Program: 0-MWD													Offset Well Error:	0.0 ft
Reference		Offset		Semi Major Axis			Distance							Warning
Measured Depth (ft)	Vertical Depth (ft)	Measured Depth (ft)	Vertical Depth (ft)	Reference (ft)	Offset (ft)	Highside Toolface (°)	Offset Wellbore Centre +N/-S (ft)	+E/-W (ft)	Between Centres (ft)	Between Ellipses (ft)	Minimum Separation (ft)	Separation Factor		
14,000.0	7,053.0	14,168.6	7,223.0	199.0	199.6	112.22	557.1	7,099.2	449.5	77.2	372.35	1.207	Level 2	
14,100.0	7,053.0	14,268.6	7,223.0	201.8	202.4	112.23	557.8	7,199.2	449.3	71.8	377.54	1.190	Level 2	
14,200.0	7,053.0	14,368.6	7,223.0	204.6	205.2	112.24	558.5	7,299.2	449.1	66.4	382.72	1.174	Level 2	
14,300.0	7,053.0	14,468.6	7,223.0	207.4	208.0	112.25	559.3	7,399.2	448.9	61.0	387.91	1.157	Level 2	
14,400.0	7,053.0	14,568.6	7,223.0	210.2	210.8	112.26	560.0	7,499.2	448.7	55.7	393.10	1.142	Level 2	
14,500.0	7,053.0	14,668.6	7,223.0	213.0	213.6	112.27	560.7	7,599.2	448.6	50.3	398.28	1.126	Level 2	
14,600.0	7,053.0	14,768.6	7,223.0	215.8	216.4	112.28	561.5	7,699.2	448.4	44.9	403.47	1.111	Level 2	
14,700.0	7,053.0	14,868.6	7,223.0	218.6	219.2	112.29	562.2	7,799.2	448.2	39.5	408.65	1.097	Level 2	
14,800.0	7,053.0	14,968.6	7,223.0	221.4	222.0	112.30	562.9	7,899.2	448.0	34.1	413.84	1.082	Level 2	
14,900.0	7,053.0	15,068.6	7,223.0	224.2	224.8	112.31	563.6	7,999.2	447.8	28.7	419.02	1.069	Level 2	
15,000.0	7,053.0	15,168.6	7,223.0	227.0	227.6	112.32	564.4	8,099.1	447.6	23.4	424.21	1.055	Level 2	
15,100.0	7,053.0	15,268.6	7,223.0	229.8	230.4	112.33	565.1	8,199.1	447.4	18.0	429.39	1.042	Level 2	
15,200.0	7,053.0	15,368.6	7,223.0	232.6	233.2	112.34	565.8	8,299.1	447.2	12.6	434.57	1.029	Level 2	
15,300.0	7,053.0	15,468.6	7,223.0	235.4	236.0	112.35	566.5	8,399.1	447.0	7.2	439.76	1.016	Level 2	
15,400.0	7,053.0	15,568.6	7,223.0	238.2	238.8	112.36	567.3	8,499.1	446.8	1.8	444.94	1.004	Level 2	
15,500.0	7,053.0	15,668.6	7,223.0	241.0	241.6	112.37	568.0	8,599.1	446.6	-3.5	450.12	0.992	Level 1	
15,600.0	7,053.0	15,768.6	7,223.0	243.8	244.4	112.39	568.7	8,699.1	446.4	-8.9	455.30	0.980	Level 1	
15,700.0	7,053.0	15,868.6	7,223.0	246.6	247.2	112.40	569.5	8,799.1	446.2	-14.3	460.49	0.969	Level 1	
15,800.0	7,053.0	15,968.6	7,223.0	249.4	250.0	112.41	570.2	8,899.1	446.0	-19.7	465.67	0.958	Level 1	
15,900.0	7,053.0	16,068.6	7,223.0	252.2	252.8	112.42	570.9	8,999.1	445.8	-25.0	470.85	0.947	Level 1	
16,000.0	7,053.0	16,168.6	7,223.0	255.0	255.6	112.43	571.6	9,099.1	445.6	-30.4	476.03	0.936	Level 1	
16,100.0	7,053.0	16,268.6	7,223.0	257.8	258.4	112.44	572.4	9,199.1	445.4	-35.8	481.21	0.926	Level 1	
16,200.0	7,053.0	16,368.6	7,223.0	260.6	261.2	112.45	573.1	9,299.1	445.2	-41.2	486.39	0.915	Level 1	
16,300.0	7,053.0	16,468.6	7,223.0	263.4	264.0	112.46	573.8	9,399.1	445.0	-46.6	491.56	0.905	Level 1	
16,400.0	7,053.0	16,568.6	7,223.0	266.2	266.8	112.47	574.5	9,499.1	444.8	-51.9	496.74	0.895	Level 1	
16,500.0	7,053.0	16,668.6	7,223.0	269.0	269.6	112.48	575.3	9,599.1	444.6	-57.3	501.92	0.886	Level 1	
16,600.0	7,053.0	16,768.6	7,223.0	271.8	272.4	112.49	576.0	9,699.1	444.4	-62.7	507.10	0.876	Level 1	
16,700.0	7,053.0	16,868.6	7,223.0	274.6	275.2	112.50	576.7	9,799.1	444.2	-68.0	512.27	0.867	Level 1	
16,800.0	7,053.0	16,968.6	7,223.0	277.4	278.0	112.51	577.5	9,899.1	444.0	-73.4	517.45	0.858	Level 1	
16,864.0	7,053.0	17,032.7	7,223.0	279.2	279.8	112.52	577.9	9,963.1	443.9	-76.9	520.76	0.852	Level 1	
16,900.0	7,053.0	17,044.9	7,223.0	280.2	280.1	112.52	578.0	9,975.4	444.5	-77.5	522.02	0.851	Level 1, ES, SF	
16,916.1	7,053.0	17,044.9	7,223.0	280.6	280.1	112.52	578.0	9,975.4	445.6	-76.8	522.44	0.853	Level 1	

Company:	Synergy Resources	Local Co-ordinate Reference:	Well SRC Wiedeman 21-5-3CHZ
Project:	Sec.5-T5N-R66W	TVD Reference:	WELL @ 4796.0ft (RKB - 13')
Reference Site:	SRC Wiedeman Pad Sec.5-T5N-R66W	MD Reference:	WELL @ 4796.0ft (RKB - 13')
Site Error:	0.0ft	North Reference:	True
Reference Well:	SRC Wiedeman 21-5-3CHZ	Survey Calculation Method:	Minimum Curvature
Well Error:	0.0ft	Output errors are at	2.00 sigma
Reference Wellbore	Wellbore #1	Database:	Landmark
Reference Design:	Plan #3 (10-10-14)	Offset TVD Reference:	Offset Datum

Offset Design													Offset Site Error:	0.0 ft
Survey Program: 39-MWD													Offset Well Error:	0.0 ft
Reference		Offset		Semi Major Axis			Distance							Warning
Measured Depth (ft)	Vertical Depth (ft)	Measured Depth (ft)	Vertical Depth (ft)	Reference (ft)	Offset (ft)	Highside Toolface (°)	Offset Wellbore Centre +N/-S (ft)	+E/-W (ft)	Between Centres (ft)	Between Ellipses (ft)	Minimum Separation (ft)	Separation Factor		
0.0	0.0	0.0	0.0	0.0	0.0	-174.37	-104.6	-10.3	105.1					
100.0	100.0	99.0	99.0	0.1	0.2	-173.88	-105.0	-11.3	105.6	105.3	0.29	360.422		
200.0	200.0	198.3	198.3	0.3	0.4	-172.86	-106.1	-13.3	106.9	106.2	0.74	143.624		
300.0	300.0	297.3	297.2	0.6	0.6	-171.63	-107.7	-15.9	108.9	107.8	1.19	91.666		
400.0	400.0	396.1	396.0	0.8	0.8	-170.91	-110.6	-17.7	112.1	110.4	1.62	69.191		
500.0	500.0	495.3	495.1	1.0	1.1	-171.09	-114.5	-17.9	116.0	113.9	2.05	56.645		
600.0	600.0	592.6	592.3	1.2	1.3	-167.33	-119.6	-17.5	122.8	120.3	2.49	49.241		
700.0	699.8	689.3	688.7	1.5	1.5	-167.95	-126.6	-18.1	135.2	132.3	2.95	45.864		
800.0	799.5	782.4	781.3	1.7	1.8	-167.68	-135.4	-21.5	153.5	150.1	3.40	45.099 SF		
900.0	898.7	874.9	872.9	2.0	2.0	-167.21	-147.1	-26.6	178.5	174.6	3.87	46.155		
1,000.0	997.5	965.8	962.6	2.3	2.4	-167.19	-160.8	-31.3	209.0	204.6	4.33	48.293		
1,035.8	1,032.7	998.0	994.4	2.4	2.5	-167.24	-166.1	-32.9	221.2	216.7	4.49	49.261		
1,100.0	1,095.8	1,057.6	1,053.0	2.6	2.7	-167.38	-176.1	-36.2	243.7	238.9	4.78	50.943		
1,200.0	1,194.0	1,150.0	1,143.9	2.9	3.0	-167.54	-192.0	-41.4	279.0	273.8	5.24	53.294		
1,300.0	1,292.3	1,241.5	1,233.9	3.3	3.3	-167.90	-208.2	-45.4	314.7	309.0	5.69	55.353		
1,400.0	1,390.5	1,333.0	1,323.6	3.7	3.7	-168.34	-225.4	-48.7	351.4	345.3	6.14	57.237		
1,500.0	1,488.8	1,437.1	1,426.1	4.1	4.0	-168.96	-244.0	-50.9	387.1	380.5	6.61	58.577		
1,600.0	1,587.0	1,542.3	1,530.2	4.5	4.3	-169.46	-259.0	-52.8	419.3	412.2	7.06	59.413		
1,700.0	1,685.3	1,639.7	1,626.7	4.8	4.6	-169.72	-271.7	-55.4	450.5	443.0	7.51	59.997		
1,800.0	1,783.6	1,729.5	1,715.7	5.2	4.9	-169.88	-283.4	-58.2	481.7	473.7	7.96	60.505		
1,900.0	1,881.8	1,820.8	1,805.9	5.6	5.2	-169.76	-296.5	-63.5	514.3	505.9	8.43	61.032		
2,000.0	1,980.1	1,911.8	1,895.8	6.0	5.5	-169.81	-309.6	-67.4	546.9	538.1	8.89	61.491		
2,100.0	2,078.3	1,996.5	1,979.3	6.4	5.8	-169.69	-322.9	-72.5	581.0	571.6	9.36	62.103		
2,200.0	2,176.6	2,086.8	2,068.2	6.8	6.1	-169.64	-338.5	-77.5	616.4	606.5	9.83	62.690		
2,300.0	2,274.8	2,181.6	2,161.6	7.2	6.5	-169.74	-354.4	-81.2	651.2	640.9	10.31	63.169		
2,400.0	2,373.1	2,261.8	2,240.3	7.6	6.8	-169.84	-368.8	-84.2	687.2	676.4	10.76	63.876		
2,500.0	2,471.3	2,337.0	2,313.9	8.0	7.1	-169.92	-384.2	-87.1	725.4	714.2	11.21	64.724		
2,600.0	2,569.6	2,441.6	2,416.2	8.4	7.5	-170.12	-405.9	-90.1	763.9	752.2	11.71	65.224		

SRC Wiedeman Pad Sec.5-T5N-R66W - SRC Wiedeman 22-5-4NBHZ - Wellbore #1 - Plan #3 (9-24-1)													Offset Site Error:	0.0 ft
Survey Program: 0-MWD													Offset Well Error:	0.0 ft
Reference		Offset		Semi Major Axis			Distance							
Measured Depth	Vertical Depth	Measured Depth	Vertical Depth	Reference	Offset	Highside Toolface	Offset Wellbore Centre		Between Centres	Between Ellipses	Minimum Separation	Separation Factor	Warning	
(ft)	(ft)	(ft)	(ft)	(ft)	(ft)	(°)	+N/-S (ft)	+E/-W (ft)	(ft)	(ft)	(ft)			
0.0	0.0	0.0	0.0	0.0	0.0	-174.32	-89.6	-8.9	90.1					
100.0	100.0	100.0	100.0	0.1	0.1	-174.32	-89.6	-8.9	90.1	89.8	0.22	400.696		
200.0	200.0	200.0	200.0	0.3	0.3	-174.32	-89.6	-8.9	90.1	89.4	0.67	133.565		
300.0	300.0	300.0	300.0	0.6	0.6	-174.32	-89.6	-8.9	90.1	88.9	1.12	80.139		
400.0	400.0	400.0	400.0	0.8	0.8	-174.32	-89.6	-8.9	90.1	88.5	1.57	57.242		
500.0	500.0	500.0	500.0	1.0	1.0	-174.32	-89.6	-8.9	90.1	88.0	2.02	44.522 CC, ES		
600.0	600.0	600.0	600.0	1.2	1.2	-170.04	-89.6	-8.9	91.8	89.3	2.47	37.086		
700.0	699.8	699.8	699.8	1.5	1.5	-170.56	-89.6	-8.9	96.9	94.0	2.93	33.107		
800.0	799.5	799.5	799.5	1.7	1.7	-171.31	-89.6	-8.9	105.5	102.2	3.38	31.226 SF		
900.0	898.7	894.9	894.9	2.0	1.9	-171.94	-91.1	-9.4	119.2	115.4	3.80	31.339		
1,000.0	997.5	988.7	988.6	2.3	2.0	-172.26	-95.5	-10.8	139.4	135.2	4.22	33.052		
1,035.8	1,032.7	1,021.9	1,021.6	2.4	2.1	-172.31	-97.8	-11.6	148.2	143.8	4.37	33.931		
1,100.0	1,095.8	1,080.6	1,080.2	2.6	2.2	-172.35	-102.7	-13.2	165.3	160.7	4.64	35.631		
1,200.0	1,194.0	1,170.8	1,169.8	2.9	2.4	-172.21	-112.4	-16.4	194.4	189.3	5.07	38.343		
1,300.0	1,292.3	1,259.3	1,257.3	3.3	2.6	-171.91	-124.5	-20.4	226.4	220.9	5.51	41.092		
1,400.0	1,390.5	1,352.6	1,349.3	3.7	2.9	-171.57	-139.0	-25.1	260.1	254.1	5.96	43.670		
1,500.0	1,488.8	1,446.7	1,442.2	4.1	3.2	-171.30	-153.6	-29.9	293.8	287.4	6.40	45.899		
1,600.0	1,587.0	1,540.8	1,535.1	4.5	3.5	-171.09	-168.2	-34.7	327.6	320.7	6.86	47.788		
1,700.0	1,685.3	1,634.9	1,627.9	4.8	3.8	-170.92	-182.9	-39.6	361.3	354.0	7.31	49.406		
1,800.0	1,783.6	1,729.1	1,720.8	5.2	4.1	-170.78	-197.5	-44.4	395.1	387.3	7.78	50.787		
1,900.0	1,881.8	1,823.2	1,813.6	5.6	4.5	-170.66	-212.1	-49.2	428.8	420.6	8.25	51.999		
2,000.0	1,980.1	1,917.3	1,906.5	6.0	4.8	-170.55	-226.7	-54.0	462.6	453.9	8.72	53.058		
2,100.0	2,078.3	2,011.4	1,999.4	6.4	5.1	-170.46	-241.4	-58.8	496.4	487.2	9.19	53.991		
2,200.0	2,176.6	2,105.6	2,092.2	6.8	5.5	-170.39	-256.0	-63.6	530.1	520.5	9.67	54.818		
2,300.0	2,274.8	2,199.7	2,185.1	7.2	5.8	-170.32	-270.6	-68.4	563.9	553.7	10.15	55.555		
2,400.0	2,373.1	2,293.8	2,277.9	7.6	6.2	-170.26	-285.2	-73.2	597.6	587.0	10.63	56.214		
2,500.0	2,471.3	2,388.0	2,370.8	8.0	6.5	-170.20	-299.9	-78.0	631.4	620.3	11.11	56.809		
2,600.0	2,569.6	2,482.1	2,463.7	8.4	6.9	-170.15	-314.5	-82.8	665.2	653.6	11.60	57.346		
2,700.0	2,667.9	2,576.2	2,556.5	8.9	7.2	-170.11	-329.1	-87.6	698.9	686.8	12.08	57.835		
2,800.0	2,766.1	2,670.3	2,649.4	9.3	7.6	-170.07	-343.7	-92.4	732.7	720.1	12.57	58.280		
2,900.0	2,864.4	2,764.5	2,742.2	9.7	7.9	-170.03	-358.4	-97.2	766.5	753.4	13.06	58.687		

Company:	Synergy Resources	Local Co-ordinate Reference:	Well SRC Wiedeman 21-5-3CHZ
Project:	Sec.5-T5N-R66W	TVD Reference:	WELL @ 4796.0ft (RKB - 13')
Reference Site:	SRC Wiedeman Pad Sec.5-T5N-R66W	MD Reference:	WELL @ 4796.0ft (RKB - 13')
Site Error:	0.0ft	North Reference:	True
Reference Well:	SRC Wiedeman 21-5-3CHZ	Survey Calculation Method:	Minimum Curvature
Well Error:	0.0ft	Output errors are at	2.00 sigma
Reference Wellbore	Wellbore #1	Database:	Landmark
Reference Design:	Plan #3 (10-10-14)	Offset TVD Reference:	Offset Datum

Offset Design													Offset Site Error:	0.0ft
Survey Program: 0-MWD													Offset Well Error:	0.0ft
Reference		Offset		Semi Major Axis			Distance							Warning
Measured Depth (ft)	Vertical Depth (ft)	Measured Depth (ft)	Vertical Depth (ft)	Reference (ft)	Offset (ft)	Highside Toolface (°)	Offset Wellbore Centre +N/-S (ft)	+E/-W (ft)	Between Centres (ft)	Between Ellipses (ft)	Minimum Separation (ft)	Separation Factor		
0.0	0.0	0.0	0.0	0.0	0.0	-174.32	-44.8	-4.5	45.0					
100.0	100.0	100.0	100.0	0.1	0.1	-174.32	-44.8	-4.5	45.0	44.8	0.22	200.330		
200.0	200.0	200.0	200.0	0.3	0.3	-174.32	-44.8	-4.5	45.0	44.4	0.67	66.777		
300.0	300.0	300.0	300.0	0.6	0.6	-174.32	-44.8	-4.5	45.0	43.9	1.12	40.066		
400.0	400.0	400.0	400.0	0.8	0.8	-174.32	-44.8	-4.5	45.0	43.5	1.57	28.619		
500.0	500.0	500.0	500.0	1.0	1.0	-174.32	-44.8	-4.5	45.0	43.0	2.02	22.259 CC, ES		
600.0	600.0	600.0	600.0	1.2	1.2	-170.22	-44.8	-4.5	46.7	44.3	2.47	18.889		
700.0	699.8	699.8	699.8	1.5	1.5	-171.19	-44.8	-4.5	51.9	49.0	2.93	17.729 SF		
800.0	799.5	799.5	799.5	1.7	1.7	-172.43	-44.8	-4.5	60.5	57.2	3.38	17.911		
900.0	898.7	898.7	898.7	2.0	1.9	-173.67	-44.8	-4.5	72.6	68.8	3.83	18.964		
1,000.0	997.5	997.5	997.5	2.3	2.1	-174.76	-44.8	-4.5	88.2	83.9	4.28	20.614		
1,035.8	1,032.7	1,032.7	1,032.7	2.4	2.2	-175.11	-44.8	-4.5	94.6	90.2	4.44	21.316		
1,100.0	1,095.8	1,095.8	1,095.8	2.6	2.4	-175.65	-44.8	-4.5	106.5	101.8	4.73	22.514		
1,200.0	1,194.0	1,194.0	1,194.0	2.9	2.6	-176.30	-44.8	-4.5	125.1	119.9	5.19	24.098		
1,300.0	1,292.3	1,292.3	1,292.3	3.3	2.8	-176.78	-44.8	-4.5	143.6	138.0	5.65	25.413		
1,400.0	1,390.5	1,390.5	1,390.5	3.7	3.0	-177.15	-44.8	-4.5	162.2	156.1	6.12	26.518		
1,500.0	1,488.8	1,488.8	1,488.8	4.1	3.2	-177.44	-44.8	-4.5	180.8	174.2	6.58	27.461		
1,600.0	1,587.0	1,587.0	1,587.0	4.5	3.5	-177.68	-44.8	-4.5	199.4	192.3	7.05	28.272		
1,700.0	1,685.3	1,685.3	1,685.3	4.8	3.7	-177.88	-44.8	-4.5	217.9	210.4	7.52	28.978		
1,800.0	1,783.6	1,783.6	1,783.6	5.2	3.9	-178.04	-44.8	-4.5	236.5	228.5	7.99	29.597		
1,900.0	1,881.8	1,881.8	1,881.8	5.6	4.1	-178.19	-44.8	-4.5	255.1	246.6	8.46	30.145		
2,000.0	1,980.1	1,980.1	1,980.1	6.0	4.3	-178.31	-44.8	-4.5	273.7	264.8	8.93	30.632		
2,100.0	2,078.3	2,083.5	2,083.5	6.4	4.6	-178.23	-44.1	-5.5	291.6	282.2	9.41	30.973		
2,200.0	2,176.6	2,188.9	2,188.8	6.8	4.8	-177.60	-41.2	-9.6	307.3	297.4	9.89	31.057		
2,300.0	2,274.8	2,294.8	2,294.3	7.2	5.0	-176.46	-36.1	-16.9	320.9	310.5	10.39	30.895		
2,400.0	2,373.1	2,394.1	2,393.0	7.6	5.3	-175.21	-30.2	-25.4	333.5	322.6	10.88	30.653		
2,500.0	2,471.3	2,493.0	2,491.4	8.0	5.5	-174.04	-24.2	-33.9	346.2	334.8	11.38	30.421		
2,600.0	2,569.6	2,592.0	2,589.9	8.4	5.7	-172.96	-18.3	-42.3	359.0	347.1	11.89	30.200		
2,700.0	2,667.9	2,691.0	2,688.3	8.9	6.0	-171.95	-12.3	-50.8	371.9	359.5	12.40	29.990		
2,800.0	2,766.1	2,789.9	2,786.7	9.3	6.2	-171.01	-6.4	-59.3	385.0	372.0	12.92	29.789		
2,900.0	2,864.4	2,888.9	2,885.1	9.7	6.5	-170.13	-0.5	-67.8	398.1	384.7	13.45	29.598		
3,000.0	2,962.6	2,987.8	2,983.5	10.1	6.7	-169.31	5.5	-76.3	411.3	397.4	13.98	29.415		
3,100.0	3,060.9	3,086.8	3,081.9	10.5	7.0	-168.54	11.4	-84.8	424.6	410.1	14.52	29.241		
3,200.0	3,159.1	3,185.7	3,180.3	10.9	7.3	-167.82	17.4	-93.2	438.0	423.0	15.06	29.076		
3,300.0	3,257.4	3,284.7	3,278.7	11.3	7.5	-167.14	23.3	-101.7	451.5	435.9	15.61	28.918		
3,400.0	3,355.7	3,383.6	3,377.1	11.7	7.8	-166.49	29.2	-110.2	465.0	448.8	16.16	28.767		
3,500.0	3,453.9	3,482.6	3,475.5	12.1	8.1	-165.89	35.2	-118.7	478.5	461.8	16.72	28.624		
3,600.0	3,552.2	3,581.5	3,574.0	12.5	8.3	-165.32	41.1	-127.2	492.1	474.9	17.28	28.487		
3,700.0	3,650.4	3,680.5	3,672.4	12.9	8.6	-164.78	47.1	-135.6	505.8	487.9	17.84	28.356		
3,800.0	3,748.7	3,779.4	3,770.8	13.3	8.9	-164.26	53.0	-144.1	519.5	501.1	18.40	28.231		
3,900.0	3,846.9	3,873.6	3,864.5	13.7	9.1	-163.87	58.2	-151.6	533.5	514.6	18.92	28.192		
4,000.0	3,945.2	3,965.5	3,956.2	14.1	9.3	-163.78	61.7	-156.6	548.8	529.4	19.39	28.305		
4,100.0	4,043.4	4,057.0	4,047.6	14.5	9.5	-163.98	63.5	-159.2	565.3	545.5	19.82	28.528		
4,200.0	4,141.7	4,151.1	4,141.7	15.0	9.6	-164.42	63.8	-159.6	583.0	562.8	20.23	28.815		
4,300.0	4,240.0	4,249.3	4,240.0	15.4	9.8	-164.89	63.8	-159.6	601.0	580.3	20.67	29.071		
4,400.0	4,338.2	4,347.6	4,338.2	15.8	10.0	-165.34	63.8	-159.6	619.0	597.9	21.12	29.302		
4,500.0	4,436.5	4,445.8	4,436.5	16.2	10.2	-165.76	63.8	-159.6	637.0	615.4	21.58	29.523		
4,600.0	4,534.7	4,544.1	4,534.7	16.6	10.4	-166.16	63.8	-159.6	655.1	633.0	22.03	29.735		
4,700.0	4,633.0	4,642.4	4,633.0	17.0	10.7	-166.54	63.8	-159.6	673.1	650.7	22.48	29.938		
4,800.0	4,731.2	4,740.6	4,731.2	17.4	10.9	-166.90	63.8	-159.6	691.3	668.3	22.94	30.133		
4,900.0	4,829.5	4,838.9	4,829.5	17.8	11.1	-167.24	63.8	-159.6	709.4	686.0	23.40	30.320		
5,000.0	4,927.7	4,937.1	4,927.7	18.2	11.3	-167.56	63.8	-159.6	727.6	703.7	23.86	30.499		

CC - Min centre to center distance or convergent point, SF - min separation factor, ES - min ellipse separation

Company:	Synergy Resources	Local Co-ordinate Reference:	Well SRC Wiedeman 21-5-3CHZ
Project:	Sec.5-T5N-R66W	TVD Reference:	WELL @ 4796.0ft (RKB - 13')
Reference Site:	SRC Wiedeman Pad Sec.5-T5N-R66W	MD Reference:	WELL @ 4796.0ft (RKB - 13')
Site Error:	0.0ft	North Reference:	True
Reference Well:	SRC Wiedeman 21-5-3CHZ	Survey Calculation Method:	Minimum Curvature
Well Error:	0.0ft	Output errors are at	2.00 sigma
Reference Wellbore	Wellbore #1	Database:	Landmark
Reference Design:	Plan #3 (10-10-14)	Offset TVD Reference:	Offset Datum

Offset Design SRC Wiedeman Pad Sec.5-T5N-R66W - SRC Wiedeman A-5-3NBHZ - Wellbore #1 - Plan #3 (9-24-14)												Offset Site Error:	0.0 ft
Survey Program: 0-MWD												Offset Well Error:	0.0 ft
Reference	Offset	Semi Major Axis			Distance								Warning
Measured Depth (ft)	Vertical Depth (ft)	Measured Depth (ft)	Vertical Depth (ft)	Reference (ft)	Offset (ft)	Highside Toolface (°)	Offset Wellbore Centre +N/-S (ft)	+E/-W (ft)	Between Centres (ft)	Between Ellipses (ft)	Minimum Separation (ft)	Separation Factor	
5,100.0	5,026.0	5,035.4	5,026.0	18.6	11.5	-167.87	63.8	-159.6	745.7	721.4	24.31	30.671	
5,200.0	5,124.3	5,133.6	5,124.3	19.0	11.7	-168.16	63.8	-159.6	763.9	739.2	24.77	30.837	
5,300.0	5,222.5	5,231.9	5,222.5	19.4	11.9	-168.44	63.8	-159.6	782.2	756.9	25.23	30.996	

Local Co-ordinate Reference:	Well SRC Wiedeman 21-5-3CHZ
TVD Reference:	WELL @ 4796.0ft (RKB - 13')
MD Reference:	WELL @ 4796.0ft (RKB - 13')
North Reference:	True
Survey Calculation Method:	Minimum Curvature
Output errors are at	2.00 sigma
Database:	Landmark
Offset TVD Reference:	Offset Datum

Grid Convergence at Surface is: 0.45°



Reference Depths are relative to WELL @ 4796.0ft (RKB - 13')
Offset Depths are relative to Offset Datum
Central Meridian is -105.500000 °

Coordinates are relative to: SRC Wiedeman 21-5-3CHZ
Coordinate System is US State Plane 1983, Colorado Northern Zone
Grid Convergence at Surface is: 0.45°

