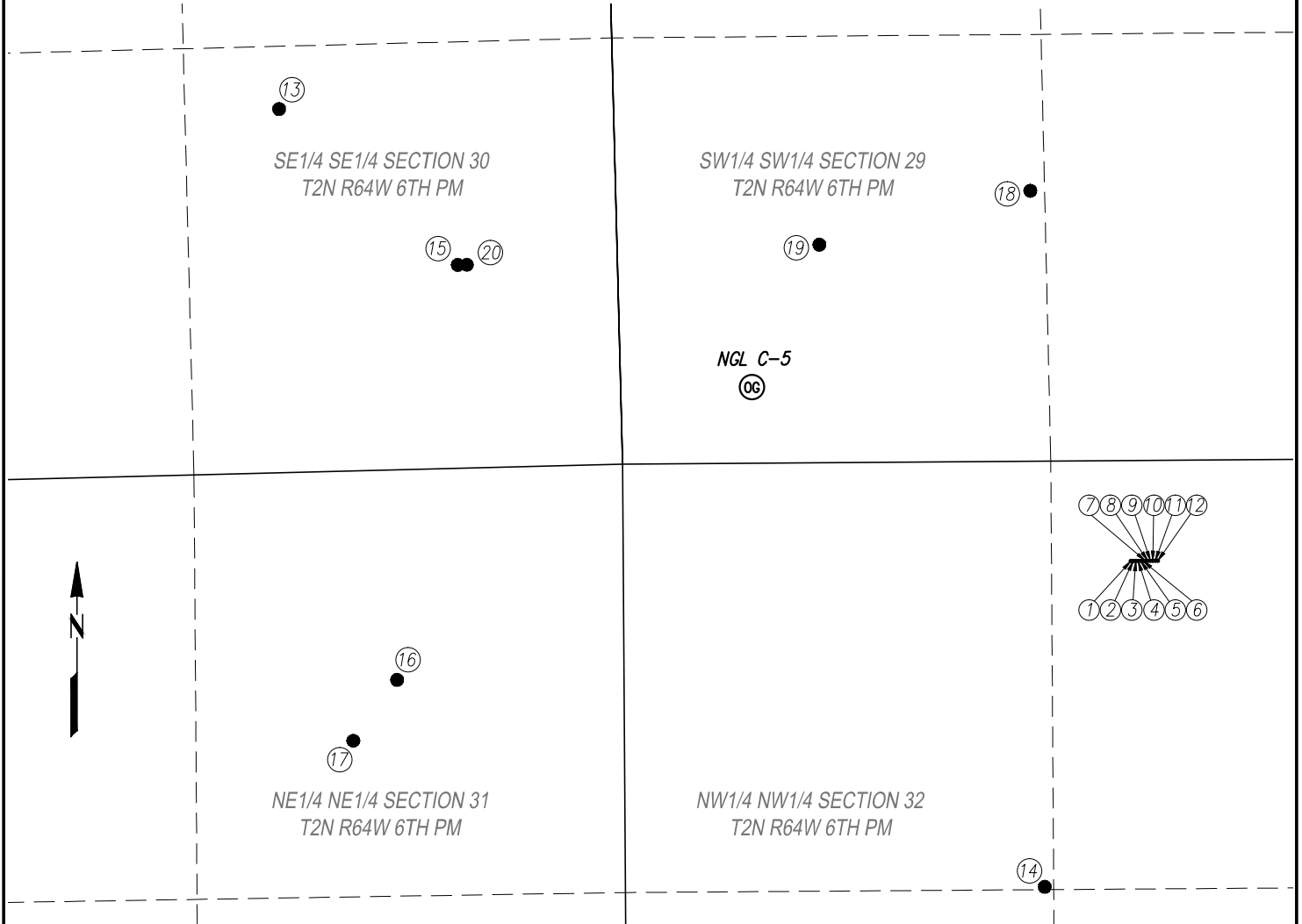


SITE SKETCH: NGL C-5

SECTION 29, TOWNSHIP 2 N, RANGE 64 WEST, 6TH P.M. WELD COUNTY, COLORADO.



WELL NO.	WELL NAME	SHL FOOTAGE				SHL LAT*	SHL LONG*
1	NEWMAN 2A-32H-C264	308'	FNL	1561'	FWL	40.10147	104.57866
2	NEWMAN 2B-32H-C264	308'	FNL	1568'	FWL	40.10147	104.58764
3	NEWMAN 2C-32H-C264	308'	FNL	1576'	FWL	40.10147	104.57861
4	NEWMAN 2D-32H-C264	308'	FNL	1583'	FWL	40.10147	104.57858
5	NEWMAN 2E-32H-C264	308'	FNL	1591'	FWL	40.10147	104.57856
6	NEWMAN 2F-32H-C264	308'	FNL	1598'	FWL	40.10147	104.57853
7	NEWMAN 2G-32H-C264	308'	FNL	1606'	FWL	40.10147	104.57850
8	NEWMAN 2H-32H-C264	308'	FNL	1613'	FWL	40.10147	104.57847
9	NEWMAN 2I-32H-C264	308'	FNL	1621'	FWL	40.10147	104.57845
10	NEWMAN 2J-32H-C264	308'	FNL	1628'	FWL	40.10147	104.57842
11	NEWMAN 2K-32H-C264	308'	FNL	1636'	FWL	40.10147	104.57839
12	NEWMAN 2L-32H-C264	308'	FNL	1644'	FWL	40.10147	104.57837
13	GRATTAN #1	1100'	FSL	990'	FEL	40.10534	104.58795
14	NEWMAN #2-32	1320'	FNL	1320'	FWL	40.09872	104.57964
15	GRATTAN #4B-30H	622'	FSL	488'	FEL	40.10402	104.58601
16	PARKER #41-31	660'	FNL	660'	FEL	40.10052	104.58672
17	LAND USX #Y31-01	832'	FNL	825'	FEL	40.10002	104.58721
18	JIM CREEK #1-29	1310'	FSL	1315'	FWL	40.10594	104.57972
19	BAUMGATNER #14-29	655'	FSL	658'	FWL	40.10415	104.58204
20	GRATTAN #4A-30H	621'	FSL	431'	FEL	40.10402	104.58591

PREPARED FOR:
NGL WATER SOLUTIONS DJ, LLC.

Acklam, Inc.
DATE SURVEYED: 10/03/2014
DATE DRAFTED: 10/07/2014
DRAFTED BY: JAM CHECKED BY: BLL
JOB No. 14580 REVISED:

SITE SKETCH - NGL C-5
NGL C-5
234' FSL & 403' FWL

NOTICE: According to Colorado law you must commence any legal action based upon any defect in this survey within three years after you first discover such defect. In no event may any action based upon any defect in this survey be commenced more than ten years from the date of the certification shown hereon.