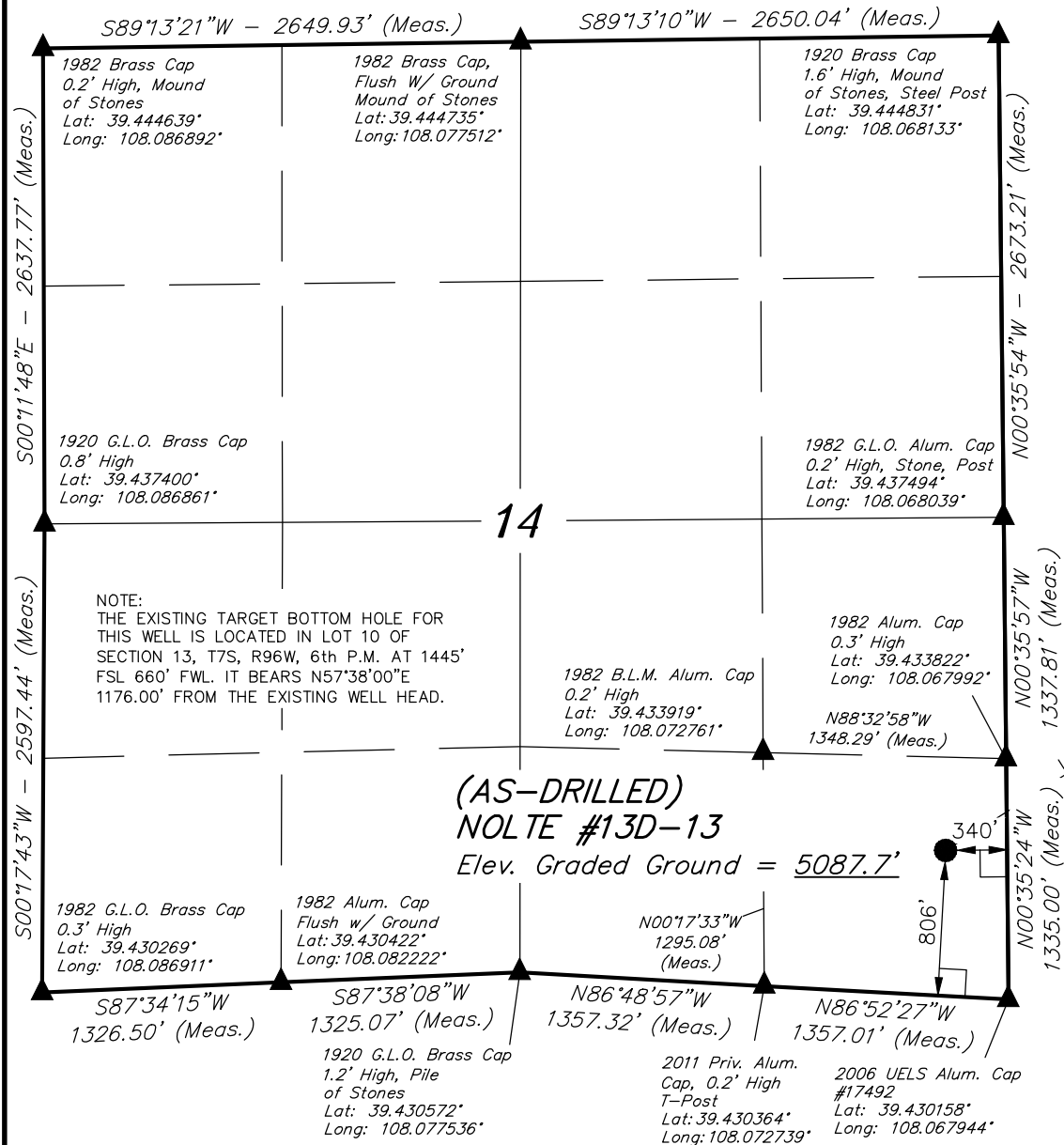


T7S, R96W, 6th P.M.



LEGEND:

- └─┘ = 90° SYMBOL
- = EXISTING WELL HEAD.
- ▲ = SECTION CORNERS LOCATED.

PDOP = 1.7

NAD 83 (SURFACE LOCATION)	
LATITUDE	= 39°25'56.74" (39.432428)
LONGITUDE	= 108°04'09.03" (108.069175)
NAD 27 (SURFACE LOCATION)	
LATITUDE	= 39°25'56.82" (39.432450)
LONGITUDE	= 108°04'06.76" (108.068544)

Caerus Oil & Gas LLC

Well location, (AS-DRILLED) NOLTE #13D-13 (SURFACE LOCATION), located as shown in the SE 1/4 SE 1/4 of Section 14, T7S, R96W, 6th P.M., Garfield County, Colorado.

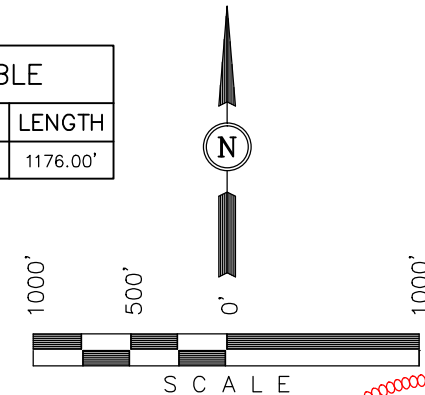
BASIS OF ELEVATION

SPOT ELEVATION AT THE NORTHWEST CORNER OF SECTION 30, T5S, R95W, 6th P.M., TAKEN FROM THE FORKED GULCH QUADRANGLE, GARFIELD COUNTY, COLORADO, 7.5 MINUTE QUAD. (TOPOGRAPHIC MAP) PUBLISHED BY THE UNITED STATES DEPARTMENT OF THE INTERIOR, GEOLOGICAL SURVEY. SAID ELEVATION IS MARKED AS BEING 5966 FEET.

BASIS OF BEARINGS

BASIS OF BEARINGS IS A G.P.S. OBSERVATION.

LINE TABLE		
LINE	DIRECTION	LENGTH
L1	N57°38'00"E	1176.00'



CERTIFICATE

THIS IS TO CERTIFY THAT THE ABOVE PLAC WAS PREPARED FROM FIELD NOTES OF ACTUAL SURVEYS MADE BY ME OR UNDER MY SUPERVISION AND THAT THE SAME ARE TRUE AND CORRECT TO THE BEST OF MY KNOWLEDGE AND BELIEF.

Harold Marshall
 REGISTERED LAND SURVEYOR
 REGISTRATION NO. 38130
 STATE OF COLORADO 09-23-14

UINTAH ENGINEERING & LAND SURVEYING

85 SOUTH 200 EAST - VERNAL, UTAH 84078

(435) 789-1017

SCALE 1" = 1000'	DATE SURVEYED: 09-12-14	DATE DRAWN: 09-22-14
PARTY B.B. B.O. M.O.B.	REFERENCES G.L.O. PLAT	
WEATHER WARM	FILE Caerus Oil & Gas LLC	

T7S, R96W, 6th P.M.

E 1/4 Cor. Sec. 12
1973 Brass Cap
0.1' High, Steel Post
Lat: 39.452428°
Long: 108.049101°

W.C. 1984 Priv. Brass Cap
Flush w/Ground, #18480
Lat: 39.445840°
Long: 108.049016°

Caerus Oil & Gas LLC

Well location, (AS-DRILLED) NOLTE #13D-13
(TARGET BOTTOM HOLE), located as shown in LOT
10 of Section 13, T7S, R96W, 6th P.M., Garfield
County, Colorado.

BASIS OF ELEVATION

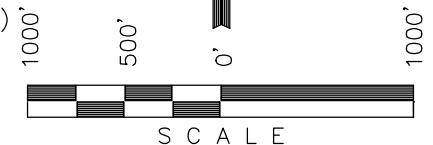
SPOT ELEVATION AT THE NORTHWEST CORNER OF SECTION
30, T5S, R95W, 6th P.M., TAKEN FROM THE FORKED GULCH
QUADRANGLE, GARFIELD COUNTY, COLORADO, 7.5 MINUTE
QUAD. (TOPOGRAPHIC MAP) PUBLISHED BY THE UNITED
STATES DEPARTMENT OF THE INTERIOR, GEOLOGICAL SURVEY.
SAID ELEVATION IS MARKED AS BEING 5966 FEET.

BASIS OF BEARINGS

BASIS OF BEARINGS IS A G.P.S. OBSERVATION.

LEGEND:

- └─ = 90° SYMBOL
- = EXISTING WELL HEAD.
- ▲ = SECTION CORNERS LOCATED.
- △ = SECTION CORNERS
RE-ESTABLISHED.
(Not Set on Ground.)



CERTIFICATE

THIS IS TO CERTIFY THAT THE ABOVE PLAT WAS PREPARED FROM FIELD
NOTES OF ACTUAL SURVEYS MADE BY ME OR UNDER MY SUPERVISION
AND THAT THE SAME ARE TRUE AND CORRECT TO THE BEST OF MY
KNOWLEDGE AND BELIEF.

Harold Marshall
REGISTERED LAND SURVEYOR
REGISTRATION NO. 38130
STATE OF COLORADO 09-23-14

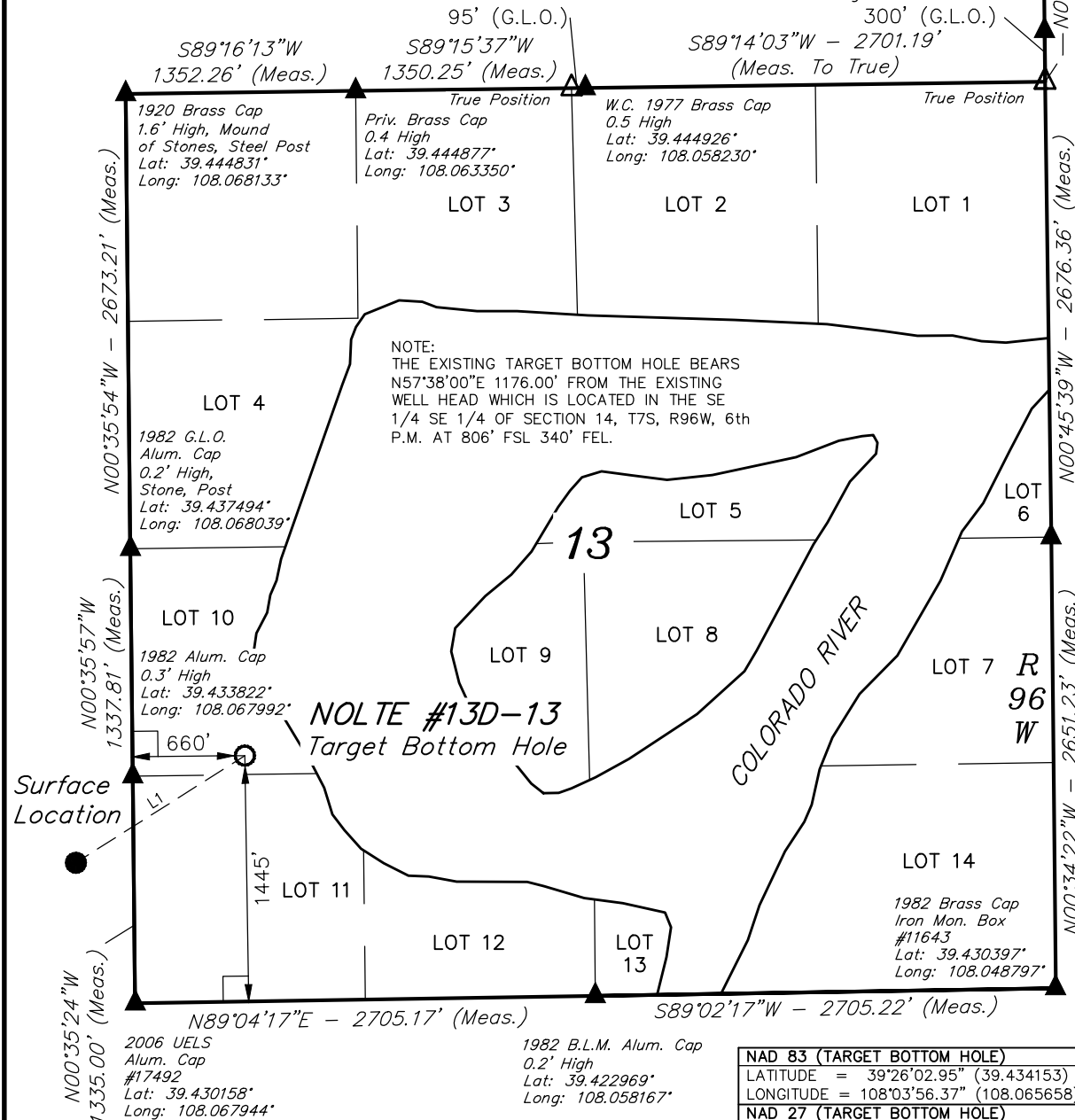
UINTAH ENGINEERING & LAND SURVEYING

85 SOUTH 200 EAST - VERNAL, UTAH 84078

(435) 789-1017

SCALE 1" = 1000'	DATE SURVEYED: 09-12-14	DATE DRAWN: 09-22-14
PARTY B.B. B.O. M.O.B.	REFERENCES G.L.O. PLAT	
WEATHER WARM	FILE Caerus Oil & Gas LLC	

LINE TABLE		
LINE	DIRECTION	LENGTH
L1	N57°38'00"E	1176.00'



NAD 83 (TARGET BOTTOM HOLE)	
LATITUDE	= 39°26'02.95" (39.434153)
LONGITUDE	= 108°03'56.37" (108.065658)
NAD 27 (TARGET BOTTOM HOLE)	
LATITUDE	= 39°26'03.03" (39.434175)
LONGITUDE	= 108°03'54.10" (108.065028)