

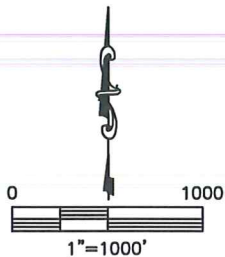
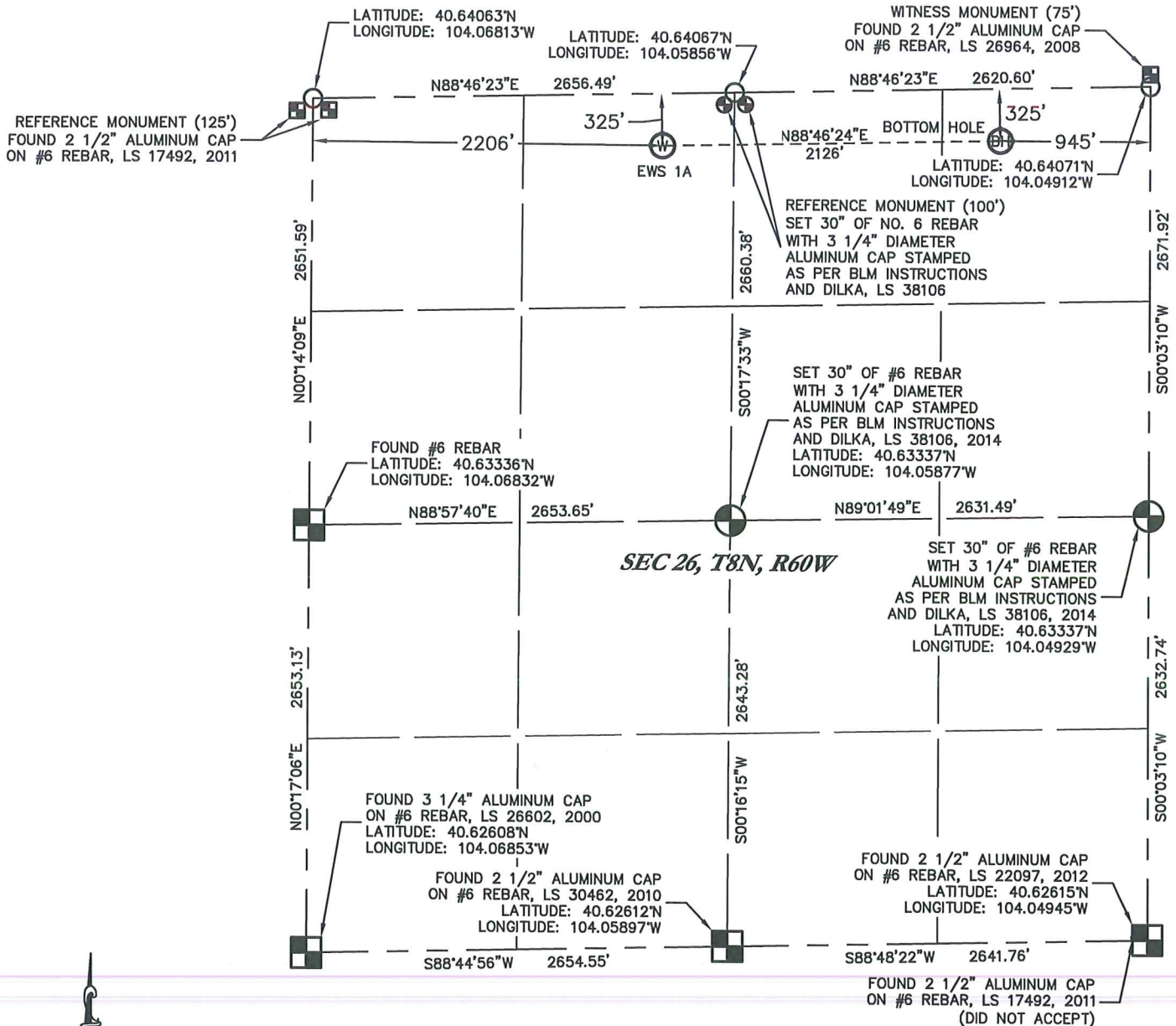
KING SURVEYORS 650 E. GARDEN DR. WINDSOR, CO 80550

WELL LOCATION CERTIFICATE

EWS 1A

THIS MAP DOES NOT REPRESENT A BOUNDARY SURVEY

SECTION: 26
TOWNSHIP: 8N
RANGE: 60W



In accordance with a request from Jim Goddard for EXPEDITION WATER SOLUTIONS, King Surveyors has determined the surface location of EWS 1A to be 325' from the NORTH line and 2206' from the WEST line and the bottom hole location to be 325' from the NORTH line and 945' from the East line, as measured at right angles, from the section lines of Section 26, Township 8 North, Range 60 West of the Sixth Principal Meridian, County of Weld, State of Colorado.

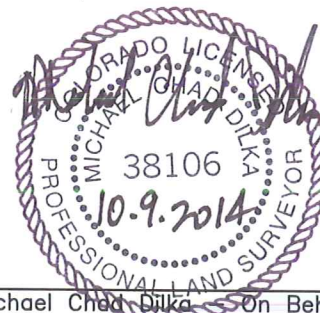
I hereby state that this Well Location Certificate was prepared by me, or under my direct supervision, that the fieldwork was completed on 10-9-2014, for and on behalf of EXPEDITION WATER SOLUTIONS, that this is not a Land Survey Plat or an Improvement Survey Plat, and that it is not to be relied upon for establishment of fence, building, or other future Improvement lines.

NOTES:

- 1) Bearings shown are Grid Bearings of the Colorado State Plane Coordinate System, North Zone, North American Datum 1983. The lineal dimensions as contained herein are based upon the "U.S. Survey Foot."
- 2) Ground elevations are based on an observed GPS elevation (NAVD 1988 DATUM).
- 3) IMPROVEMENTS: See LOCATION DRAWING for all visible improvements within 500' of the disturbed area.
- 4) SURFACE USE: PASTURE/PRAIRIE
- 5) INSTRUMENT OPERATOR: TYSON SNYDER
- 6) NEAREST CULTURAL ITEMS:
BUILDING: 4500' SOUTHWEST
BUILDING UNIT: 5280'+
HIGH OCCUPANCY BUILDING UNIT: 5280'+
DESIGNATED OUTDOOR ACTIVITY AREA: 5280'+
PUBLIC ROAD: 307' NORTH
ABOVE GROUND UTILITY: 2237' WEST
RAILROAD: 5280'+ NORTHEAST
PROPERTY LINE: 250' NORTH

LEGEND

- = FOUND ALIQUOT MONUMENT AS DESCRIBED
- = CALCULATED POSITION
- = SET ALIQUOT MONUMENT AS DESCRIBED



Michael Chad Dilka On Behalf Of King Surveyors
Colorado Licensed Professional Land Surveyor #38106

SURFACE LOCATION

LATITUDE: 40.63977°N
LONGITUDE: 104.06020°W
PDOP: 1.4
ELEV: 4907'
1/4, 1/4: NE1/4 NW1/4

BOTTOM HOLE

LATITUDE: 40.63980°N
LONGITUDE: 104.05255°W
1/4, 1/4: NE1/4 NE1/4

PROJECT#: 2014087