



Kerr-McGee Oil & Gas Onshore LP

A subsidiary of Anadarko Petroleum Corporation

1099 18th Street
Denver, CO 80202
720-929-6000

October 15, 2014

Department of Natural Resources
Oil and Gas Conservation Commission
The Chancery Building
1120 Lincoln St., Suite 801
Denver, CO 80203

Re: **30 Day Certification Letter - 318A-e**
Barclay 15C-26HZ
Township 2 North, Range 67 West, Section 14: SW/4SE/4
Unit Spacing: 02N-67W-Sec 23 W/2E/2
02N-67W-Sec 26 W/2E/2
Weld County, Colorado

Ladies/Gentlemen:

Kerr McGee Oil and Gas Onshore LP ("KMG") hereby certify to the Director that KMG owns one-hundred percent (100%) of the mineral rights in the proposed spacing unit. Therefore, KMG respectfully requests the Director to approve the boundary well.

If you have any questions or issues regarding this permit, please contact Cheryl Light at (720) 929-6461.

Very truly yours,

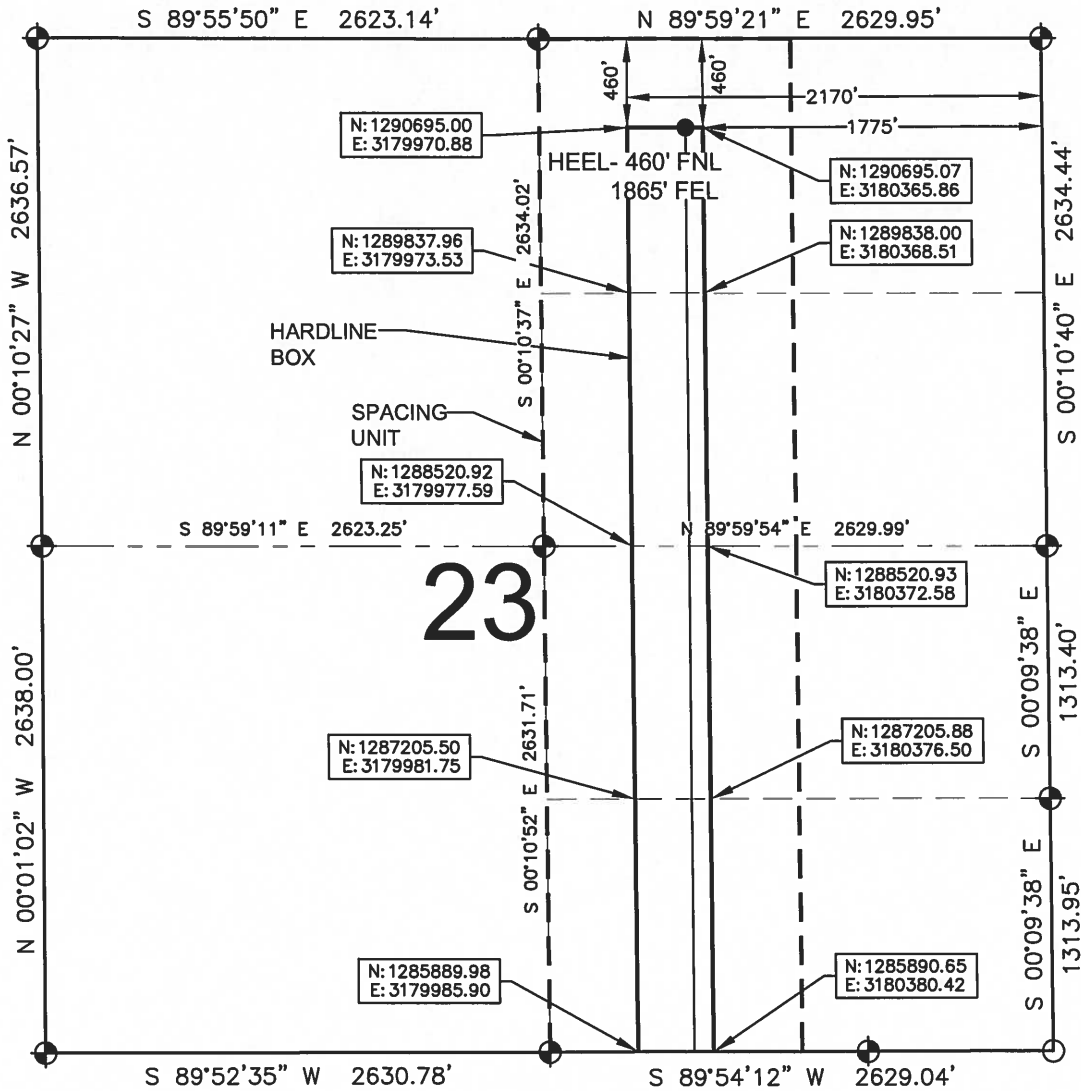
KERR-McGEE OIL AND GAS ONSHORE LP

A handwritten signature in blue ink that reads 'Cheryl Light'.

Cheryl Light
Senior Regulatory Analyst

HARDLINE EXHIBIT: BARCLAY 15C-26HZ

SECTION 23, TOWNSHIP 2 NORTH, RANGE 67 WEST, 6TH P.M.



LEGEND

⊕ = EXISTING MONUMENT ⊕ = BOTTOM HOLE
● = PROPOSED HEEL BH = BOTTOM HOLE

HEEL LOCATION

NAD83
LATITUDE= 40.129552°
LONGITUDE= 104.855280°

LATITUDE= 40°07'46.388"
LONGITUDE= 104°51'19.009"

QRT/QRT SECTIONS WITHIN PATH OF THE HARDLINE

NWNE, SEC. 23
SWNE, SEC. 23
NWSE, SEC. 23
SWSE, SEC. 23

NOTES:

- THIS DOCUMENT IS NOT A LAND SURVEY PLAT OR IMPROVEMENT SURVEY PLAT. THIS DOCUMENT DOES NOT REFLECT A FIELD SURVEY. SECTION BREAKDOWN, MONUMENTATION AND HORIZONTAL POSITIONS SHOWN ARE BASED ON THE HEEL LOCATION PROVIDED BY ANADARKO PETROLEUM CORPORATION

BOTTOM HOLE LOCATION

NAD83
LATITUDE= 40.103261°
LONGITUDE= 104.855505°

LATITUDE= 40°06'11.739"
LONGITUDE= 104°51'19.819"

AVAILABLE FOOTAGE

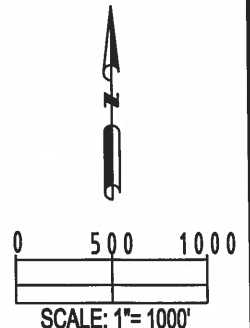
9577'

PREPARED BY:



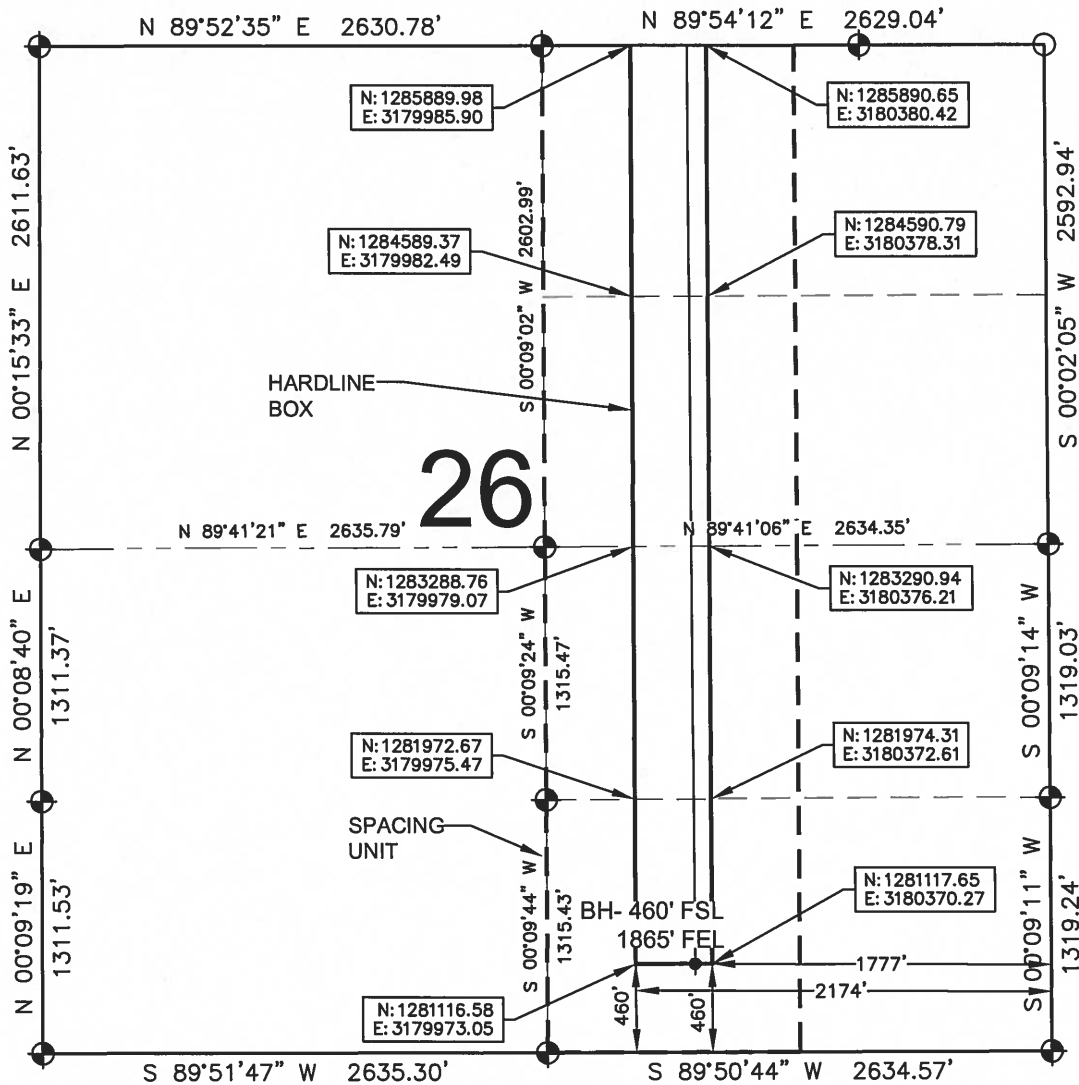
SHEET 1 OF 2

DRAWING DATE: 02-04-14		HEEL LOCATION: NW 1/4 NE 1/4, SEC. 23, T2N, R67W, 6TH P.M.	
BY: SMD	CHECKED: DRF	WELD COUNTY, COLORADO	



HARDLINE EXHIBIT: BARCLAY 15C-26HZ

SECTION 26, TOWNSHIP 2 NORTH, RANGE 67 WEST, 6TH P.M.



LEGEND

- ⊕ = EXISTING MONUMENT
- ⊙ = PROPOSED HEEL
- ⊕ = BOTTOM HOLE
- BH = BOTTOM HOLE

QRT/QRT SECTIONS WITHIN PATH OF THE HARDLINE

- NWNE, SEC. 26
- SWNE, SEC. 26
- NWSE, SEC. 26
- SWSE, SEC. 26

NOTES:

- THIS DOCUMENT IS NOT A LAND SURVEY PLAT OR IMPROVEMENT SURVEY PLAT. THIS DOCUMENT DOES NOT REFLECT A FIELD SURVEY. SECTION BREAKDOWN, MONUMENTATION AND HORIZONTAL POSITIONS SHOWN ARE BASED ON THE HEEL LOCATION PROVIDED BY ANADARKO PETROLEUM CORPORATION

SHEET 2 OF 2



DRAWING DATE: 02-04-14	HEEL LOCATION: NW 1/4 NE 1/4, SEC. 23, T2N, R67W, 6TH P.M.
BY: SMD	CHECKED: DRF
WELD COUNTY, COLORADO	

