



WARRIOR
ENERGY SERVICES

**RADIAL CEMENT BOND
GAMMA RAY
CCL**

Company KERR MCGEE OIL AND GAS
Well STATE 6-16
Field WATTENBERG
County WELD State CO

Location: API # : 05-123-29114
SHL:1466FNL 1025' FNL SW/NW

Other Services

SEC 16 TWP 1N RGE 68W

Permanent Datum	GL	Elevation	5160'
Log Measured From	KB 15'		
Drilling Measured From	KB		

Elevation
K.B. 5175'
D.F. 5174'
G.L. 5160'

Date 8-25-2014

Run Number	ONE
Depth Driller	8228'
Depth Logger	1522'
Bottom Logged Interval	1519'
Top Log Interval	SURFACE
Open Hole Size	7.875
Type Fluid	WATER
Density / Viscosity	1.0
Max. Recorded Temp.	81 DEG F
Estimated Cement Top	838'
Time Well Ready	N/A
Time Logger on Bottom	N/A
Equipment Number	4310
Location	GREELEY
Recorded By	N. BREHMER
Witnessed By	B. SMITH

Borehole Record			Tubing Record				
Run Number	Bit	From	To	Size	Weight	From	To

Casing Record	Size	Wgt/Ft	Top	Bottom
Surface String	8.0	24#	SURFACE	999'
Prot. String				
Production String	4.5	11.6#	SURFACE	8218'
Liner				

<<< Fold Here >>>

All interpretations are opinions based on inferences from electrical or other measurements and we cannot and do not guarantee the accuracy or correctness of any interpretation, and we shall not, except in the case of gross or willful negligence on our part, be liable or responsible for any loss, costs, damages, or expenses incurred or sustained by anyone resulting from any interpretation made by any of our officers, agents or employees. These interpretations are also subject to our general terms and conditions set out in our current Price Schedule.



Comments

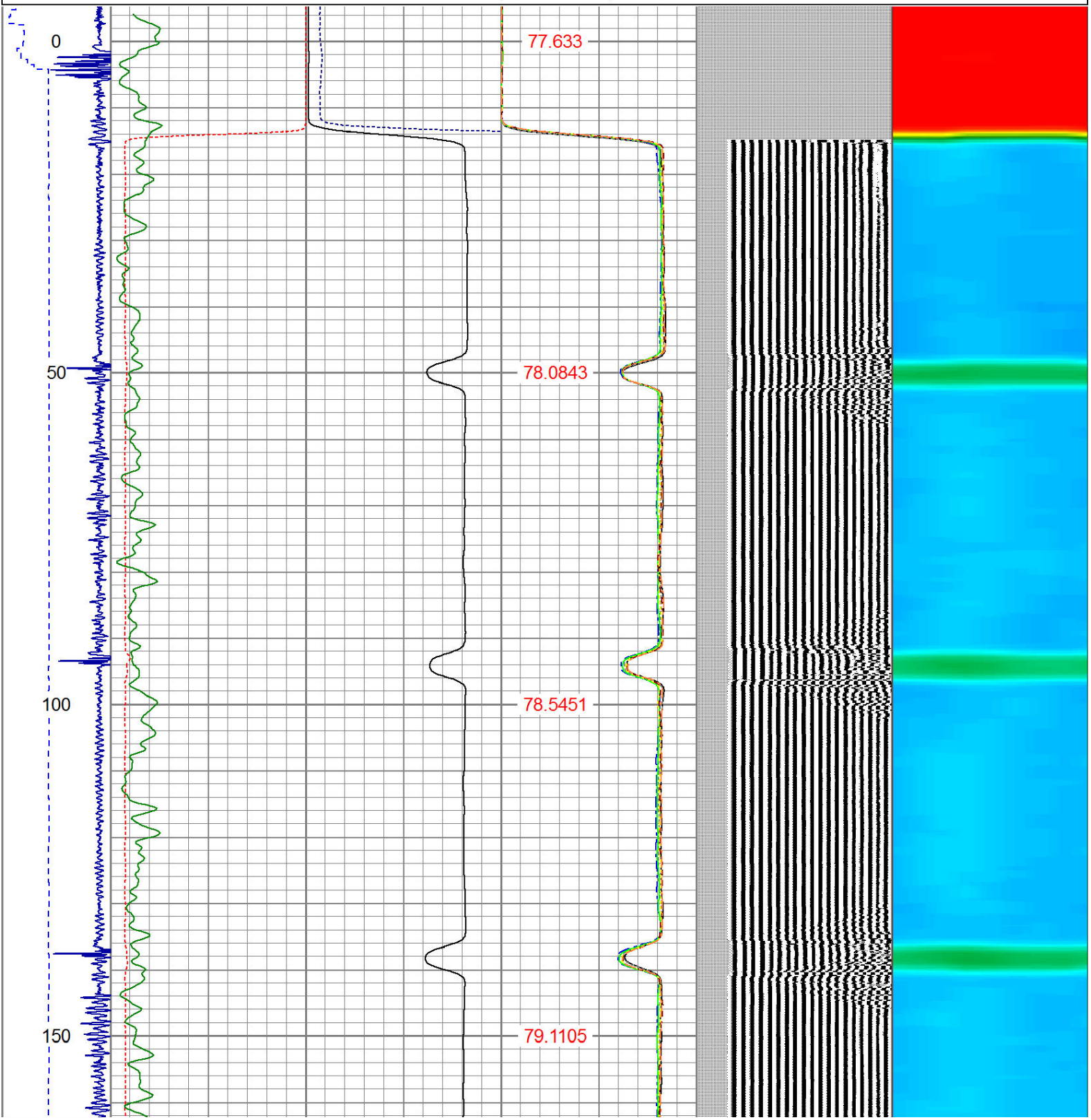
RAN CBL TO VERIFY CEMENT BOND

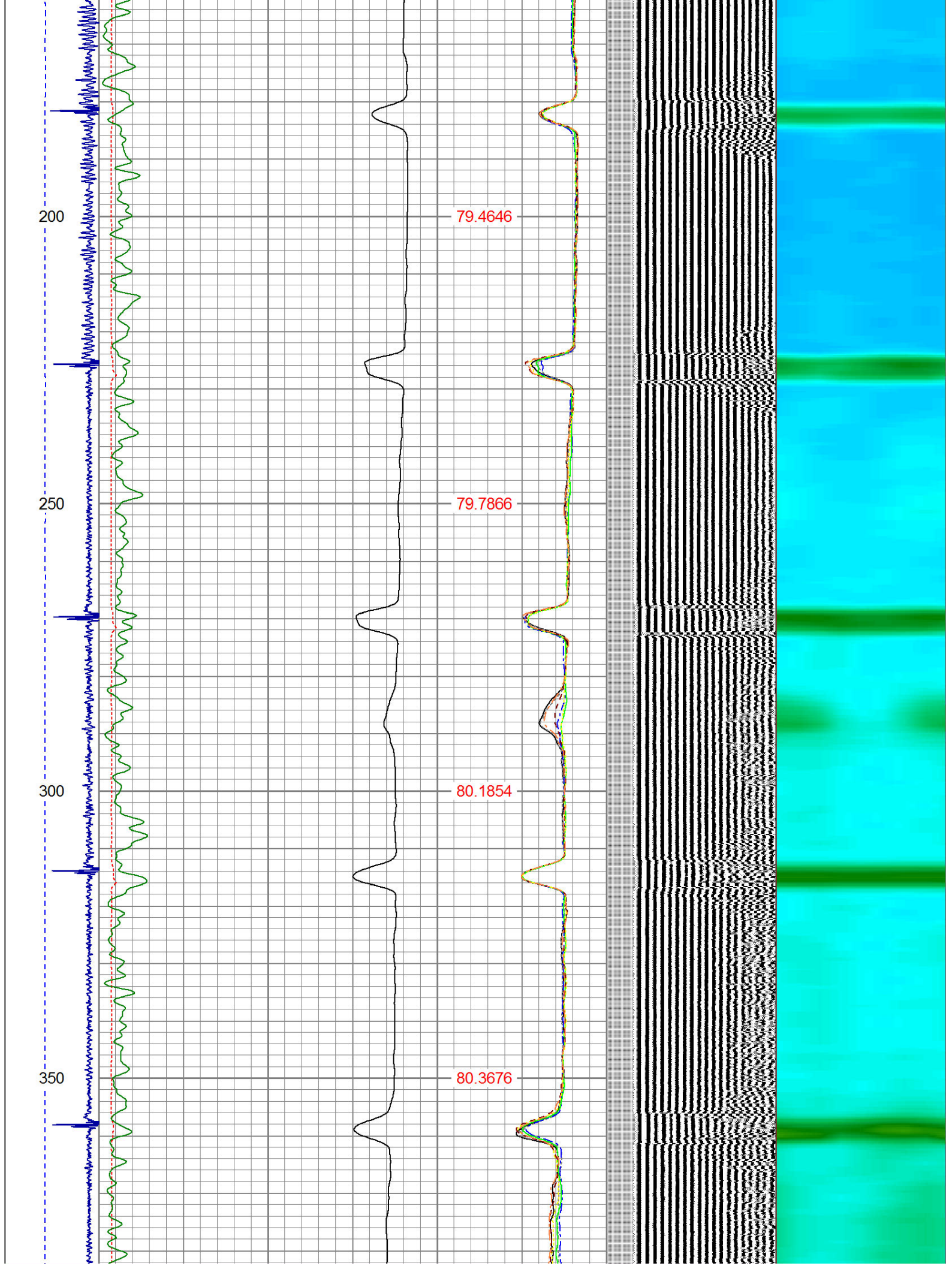
THANK YOU FOR USING WARRIOR !!!!!!!

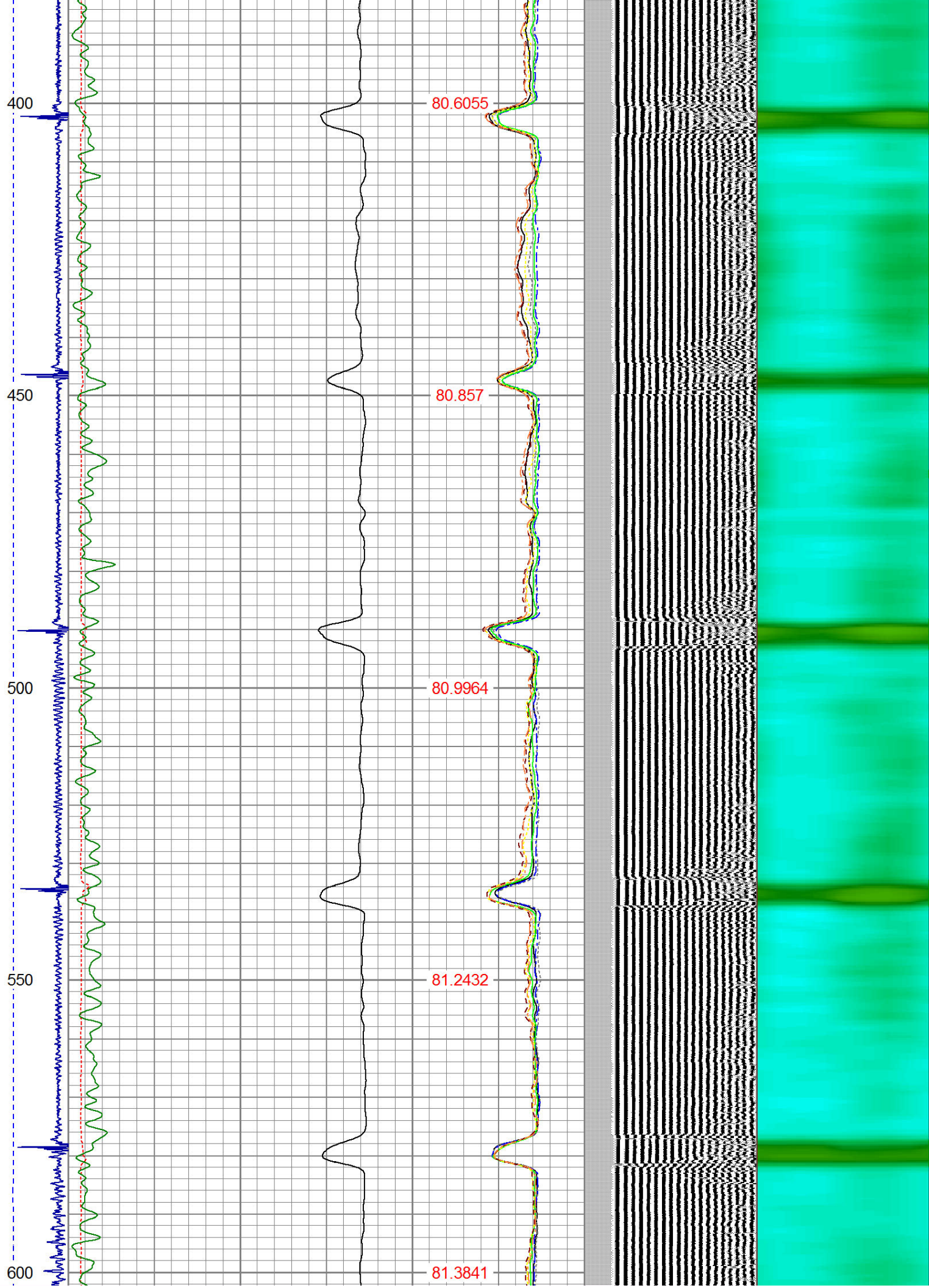
Sensor	Offset (ft)	Schematic	Description	Len (ft)	OD (in)	Wt (lb)

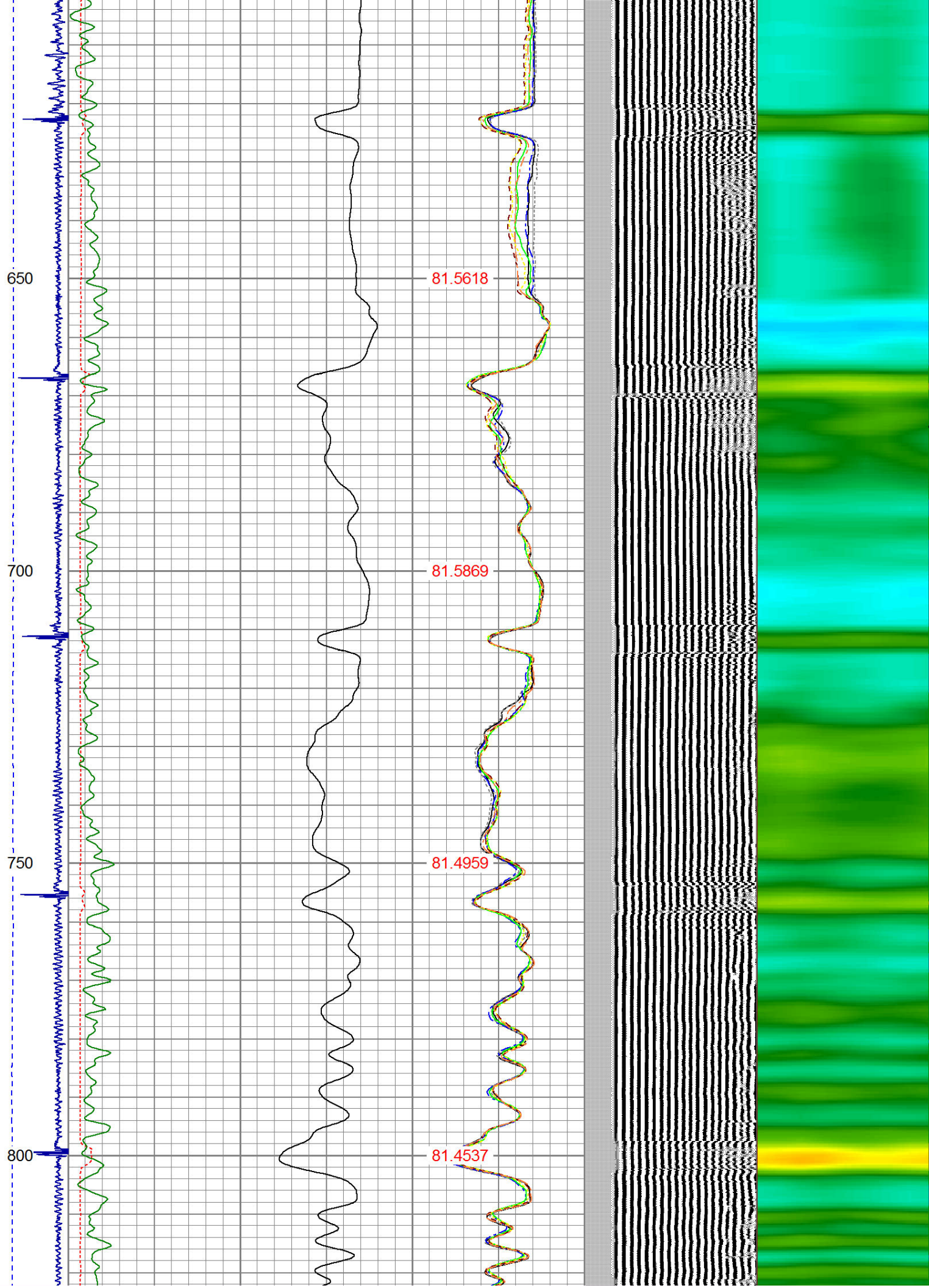
CNLSC	17.75		CNT-Probe_B (275) 6 bow centralizer	3.00	2.75	40.00
CNSSC	16.92					
HEADVOLT	16.08					
IntTemp	14.67					
WVF3FT	11.42					
WVFCAL	11.42					
WVFS1	11.42					
WVFS2	11.42					
WVFS3	11.42					
WVFS4	11.42					
WVFS5	11.42					
WVFS6	11.42					
WVFS7	11.42					
WVFS8	11.42					
WVF5FT	10.42					
			RBT-Probe (Base) Probe Radii Bond Tool with Digital Telemetry	8.92	2.75	90.00
			PTS275	2.83	2.75	
CCL	3.64					
			GR-Probe (275) Probe 2.75"	4.33	2.75	30.00
GR	0.90					
Dataset: state 6-16.db: field/well/run1/pass6 Total Length: 19.08 ft Total Weight: 160.00 lb O.D. 2.75 in						

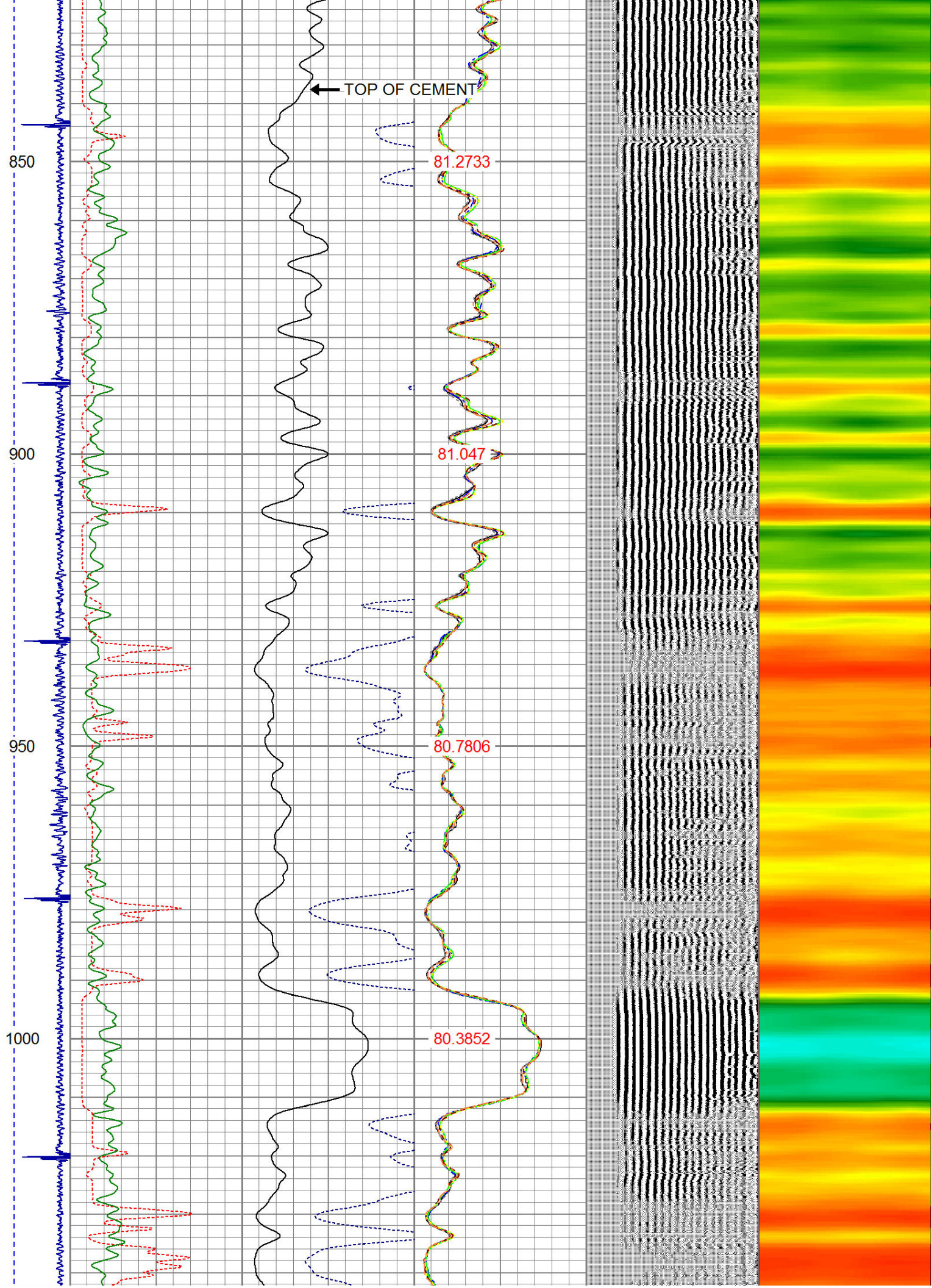
-9	CCL	1	200	TT (usec)	1000	0	AMP (mV)	100	0	AMPS1	100	200	VDL	1200	1	Cement Map	8						
LSPD (ft/min)	0		0	GR (GAPI)	200	0	AMPx5 (mV)	20	0	AMPS2	100	 											
	200		200	GR (GAPI)	400			0	AMPS4	100													
	0		250					0	AMPS5	100													
								0	AMPS6	100													
								0	AMPS7	100													
								0	AMPS8	100													
								IntTemp															
								(degF)															

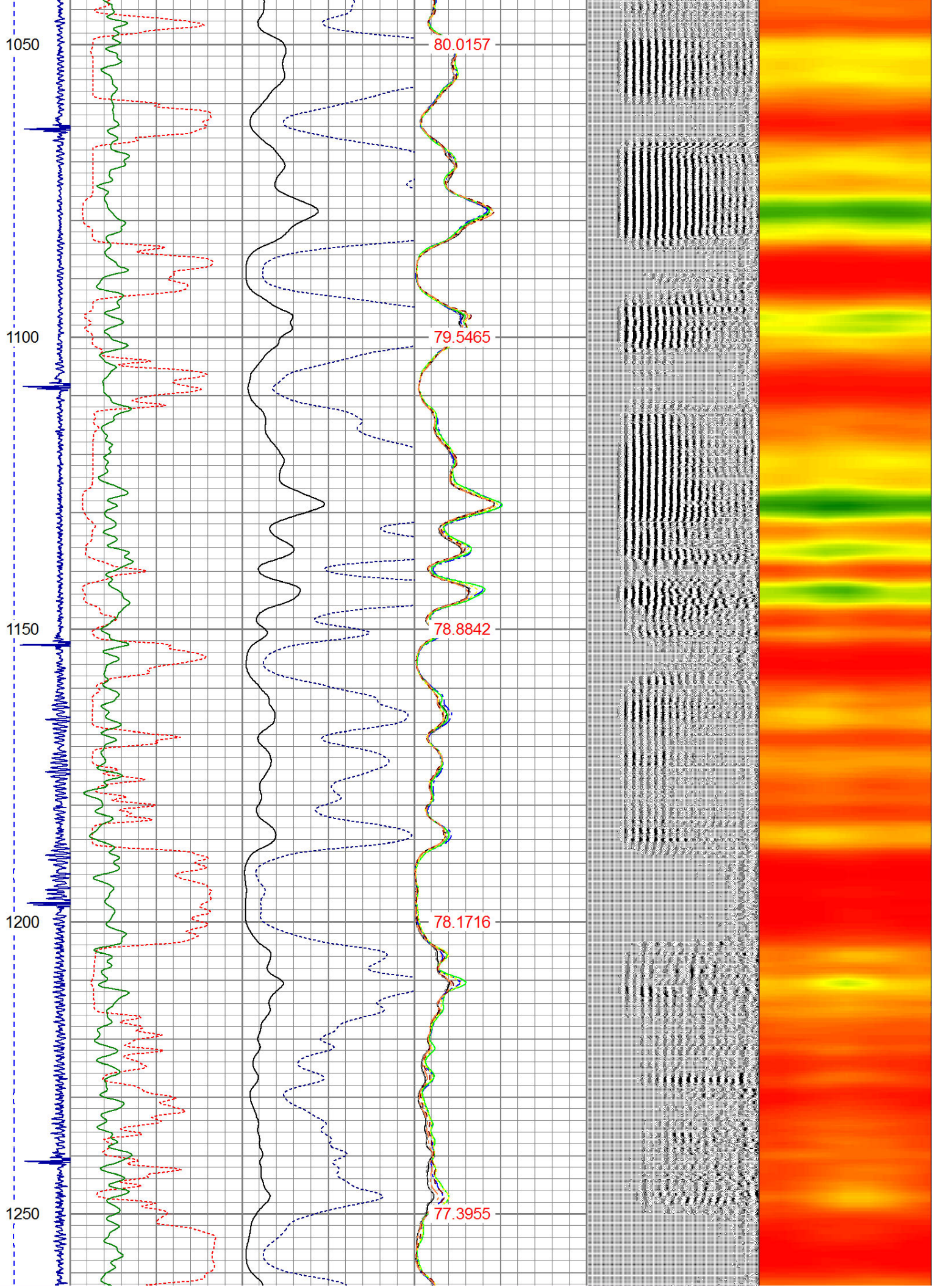


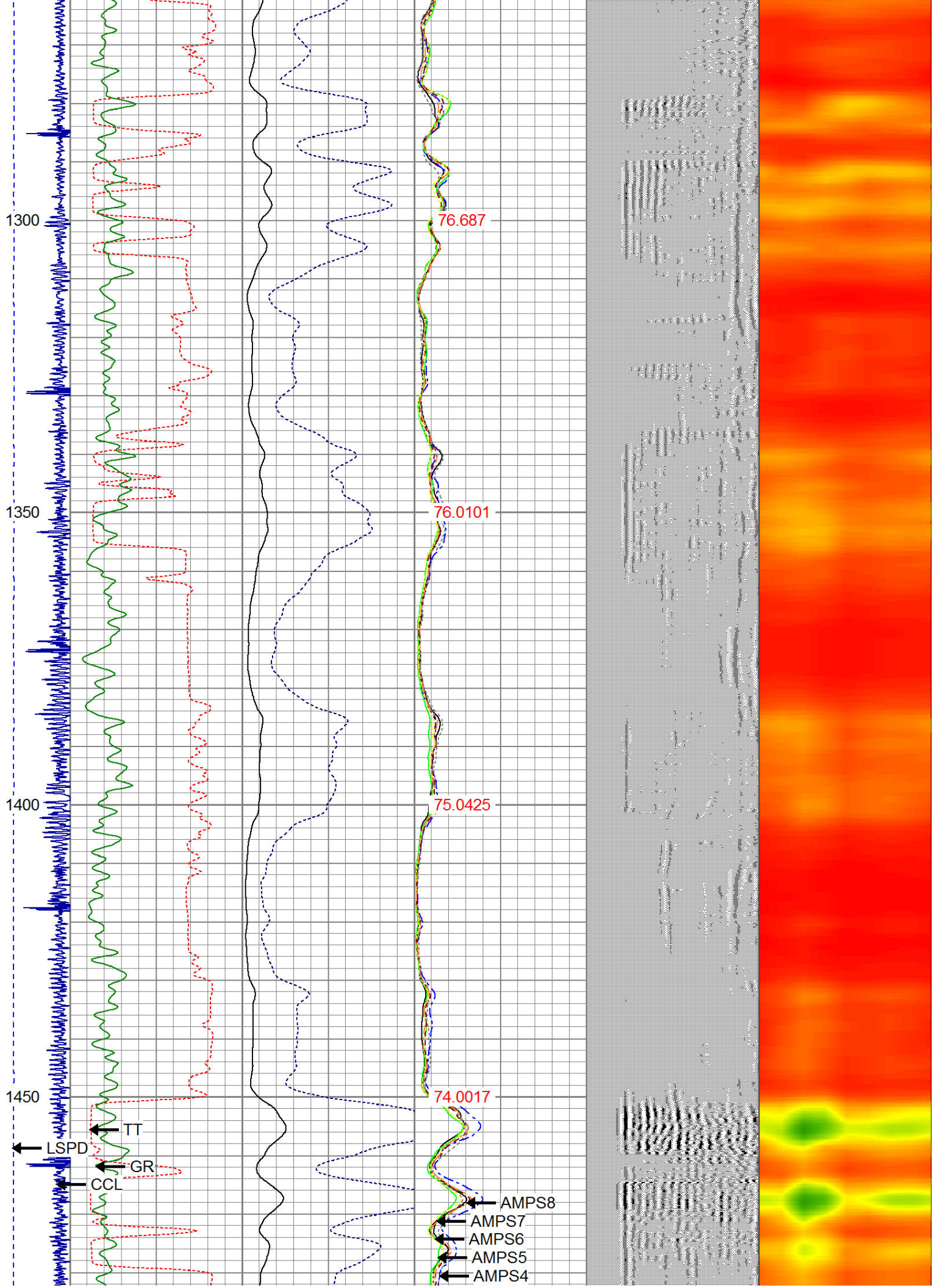


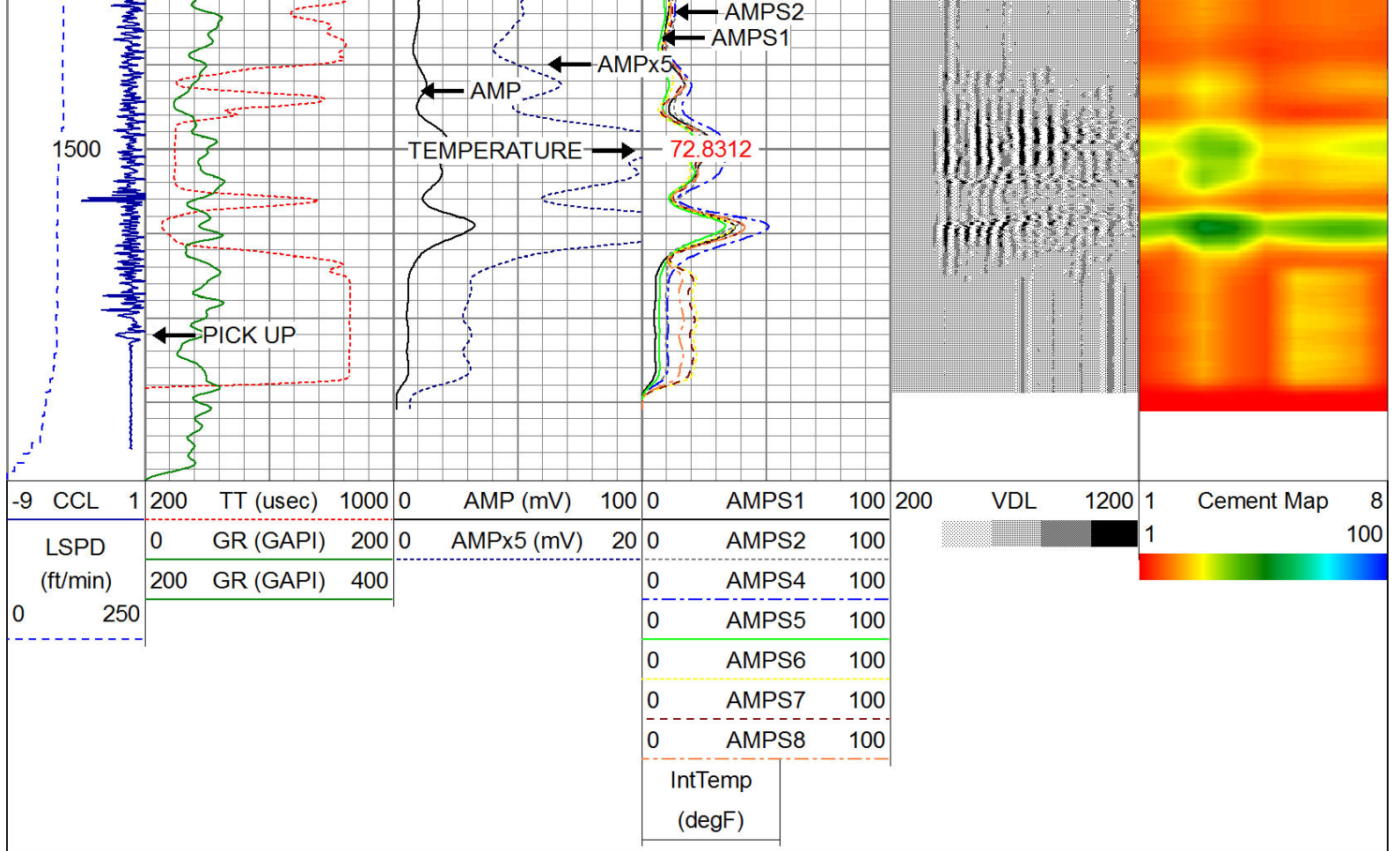












WARRIOR
ENERGY SERVICES

Company KERR McGEE OIL AND GAS
Well STATE 6-16
Field WATTENBERG
County WELD
State CO