



RADIAL CEMENT BOND  
GAMMA RAY  
CCL

Company KERR MCGEE OIL AND GAS  
Well STATE 6-16  
Field WATTENBERG  
County WELD State CO

Location: API # : 05-123-29114  
SHL:1466FNL 1025' FNL SW/NW

Other Services

SEC 16 TWP 1N RGE 68W

Permanent Datum	GL	Elevation	5160'	Elevation
Log Measured From	KB 15'			K.B. 5175'
Drilling Measured From	KB			D.F. 5174'
				G.L. 5160'

Date 8-22-2014

Run Number	ONE		
Depth Driller	8228'		
Depth Logger	3128'		
Bottom Logged Interval	3125'		
Top Log Interval	1118'		
Open Hole Size	7.875		
Type Fluid	WATER		
Density / Viscosity	1.0		
Max. Recorded Temp.	103		
Estimated Cement Top	2870'		
Time Well Ready	N/A		
Time Logger on Bottom	N/A		
Equipment Number	4310		
Location	GREELEY		
Recorded By	A.STEERMAN		
Witnessed By	B.SMITH		

Borehole Record				Tubing Record			
Run Number	Bit	From	To	Size	Weight	From	To

Casing Record	Size	Wgt/Ft	Top	Bottom
Surface String	8.0	24#	SURFACE	999'
Prot. String				
Production String	4.0	11.6#	SURFACE	8218'
Liner				

<<< Fold Here >>>

All interpretations are opinions based on inferences from electrical or other measurements and we cannot and do not guarantee the accuracy or correctness of any interpretation, and we shall not, except in the case of gross or willful negligence on our part, be liable or responsible for any loss, costs, damages, or expenses incurred or sustained by anyone resulting from any interpretation made by any of our officers, agents or employees. These interpretations are also subject to our general terms and conditions set out in our current Price Schedule.

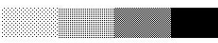

Comments

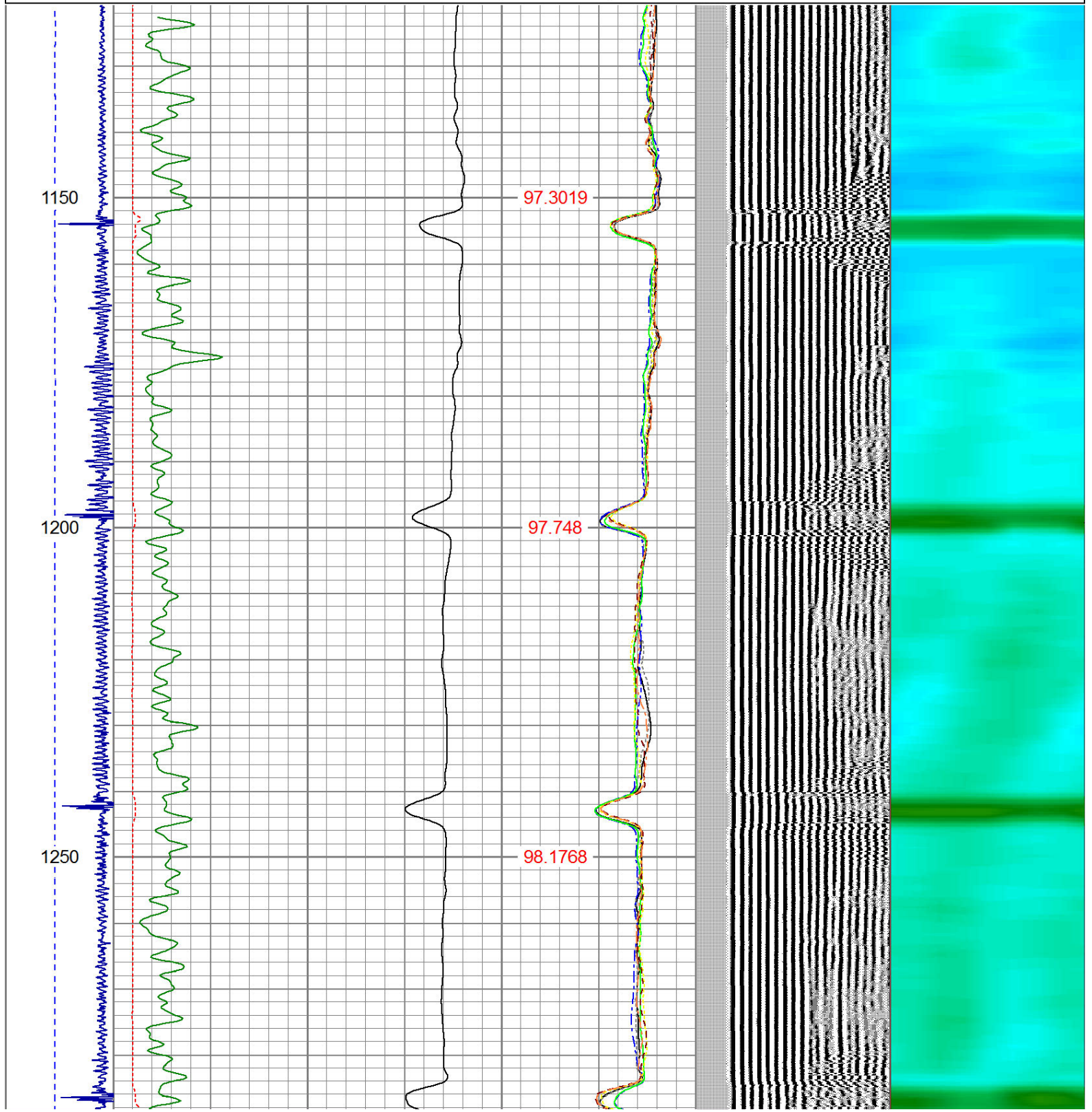
RAN CBL TO VERIFY CEMENT BOND

THANK YOU FOR USING WARRIOR !!!!!!!

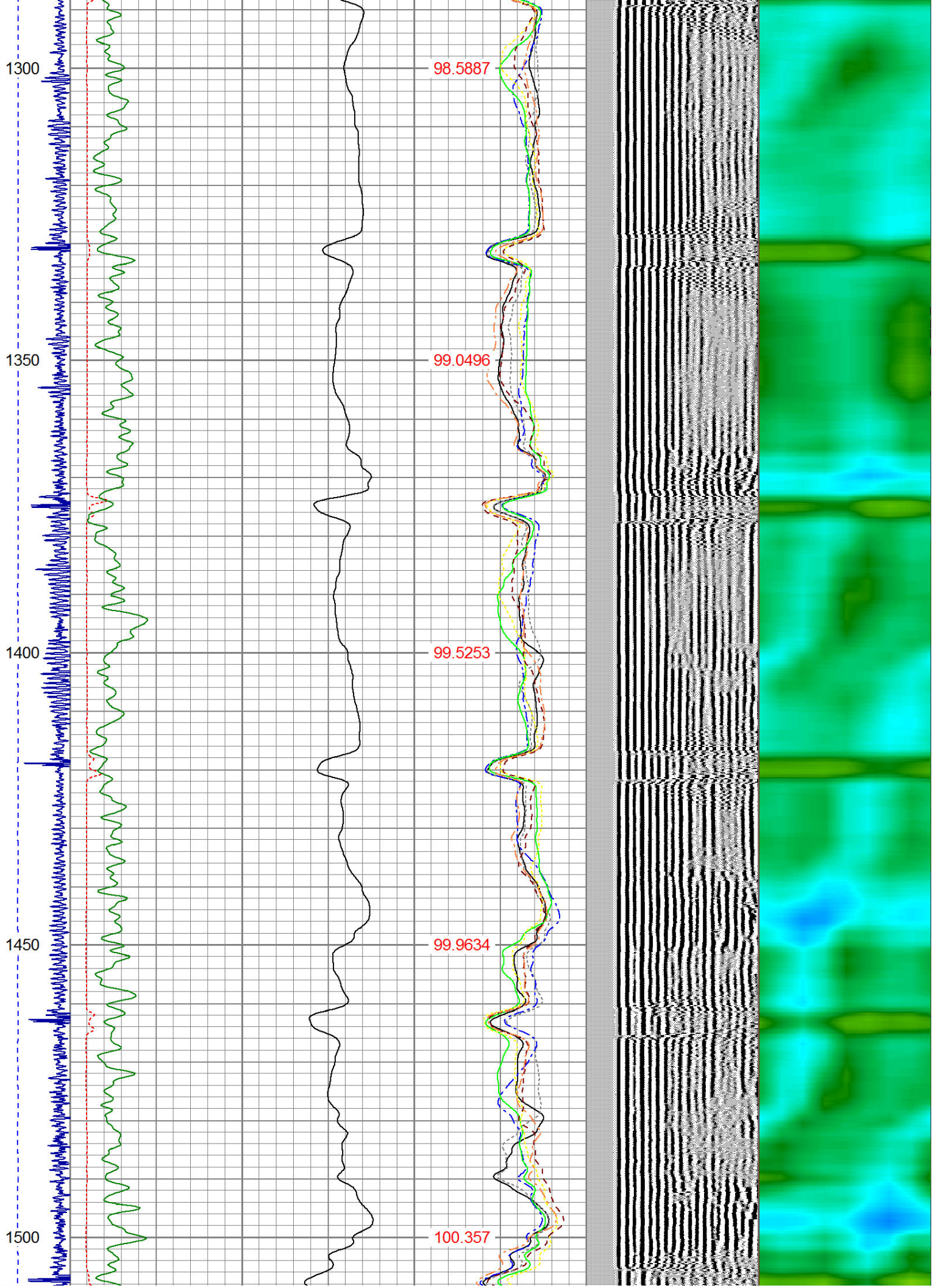
Sensor	Offset (ft)	Schematic	Description	Len (ft)	OD (in)	Wt (lb)

CNLSC	17.75		CNT-Probe_B (275) 6 bow centralizer	3.00	2.75	40.00
CNSSC	16.92					
HEADVOLT	16.08					
IntTemp	14.67					
WVF3FT	11.42					
WVFCAL	11.42					
WVFS1	11.42					
WVFS2	11.42					
WVFS3	11.42					
WVFS4	11.42					
WVFS5	11.42					
WVFS6	11.42					
WVFS7	11.42					
WVFS8	11.42					
WVF5FT	10.42					
			RBT-Probe (Base) Probe Radii Bond Tool with Digital Telemetry	8.92	2.75	90.00
			PTS275	2.83	2.75	
CCL	3.64					
			GR-Probe (275) Probe 2.75"	4.33	2.75	30.00
GR	0.90					
Dataset: state 6-16.db: field/well/run1/pass2 Total Length: 19.08 ft Total Weight: 160.00 lb O.D. 2.75 in						

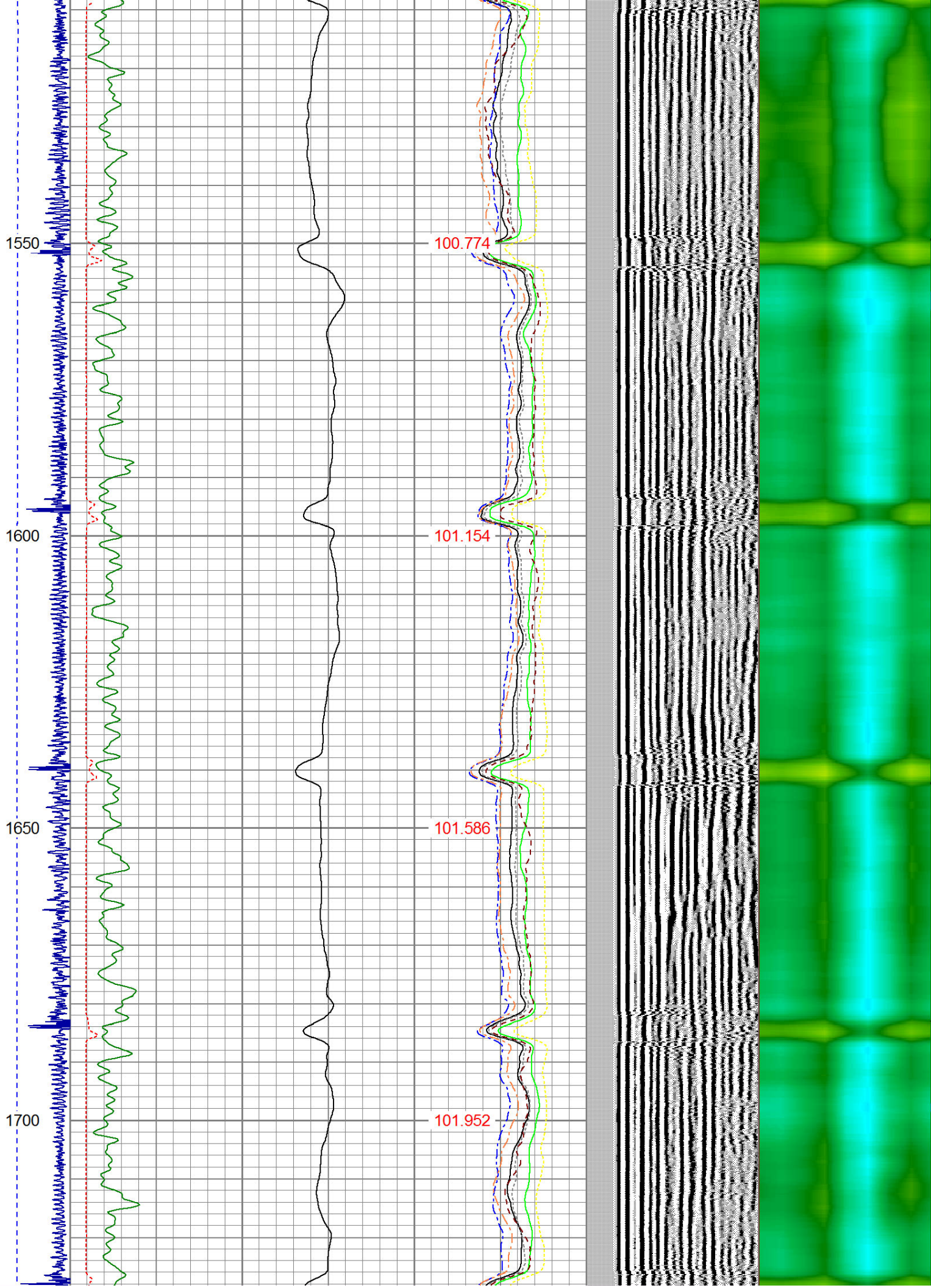
-9	CCL	1	200	TT (usec)	800	0	AMP (mV)	100	0	AMPS1	100	200	VDL	1200	1	Cement Map	8
LSPD (ft/min)	0	250	0	GR (GAPI)	200	0	AMPx5 (mV)	20	0	AMPS2	100		1	100			
			200	GR (GAPI)	400				0	AMPS4	100						
									0	AMPS5	100						
									0	AMPS6	100						
									0	AMPS7	100						
									0	AMPS8	100						
									IntTemp								
									(degF)								













1750

1800

1850

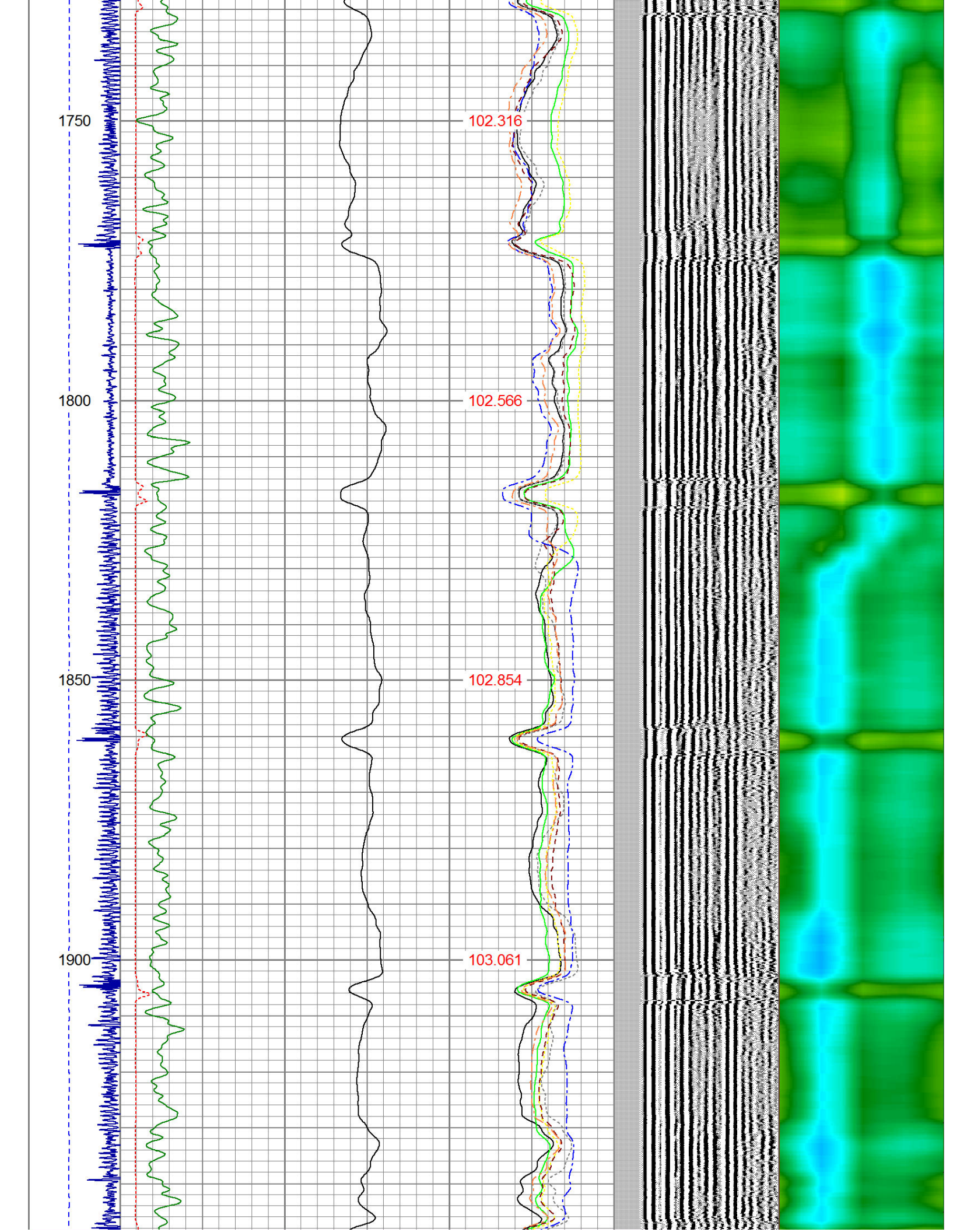
1900

102.316

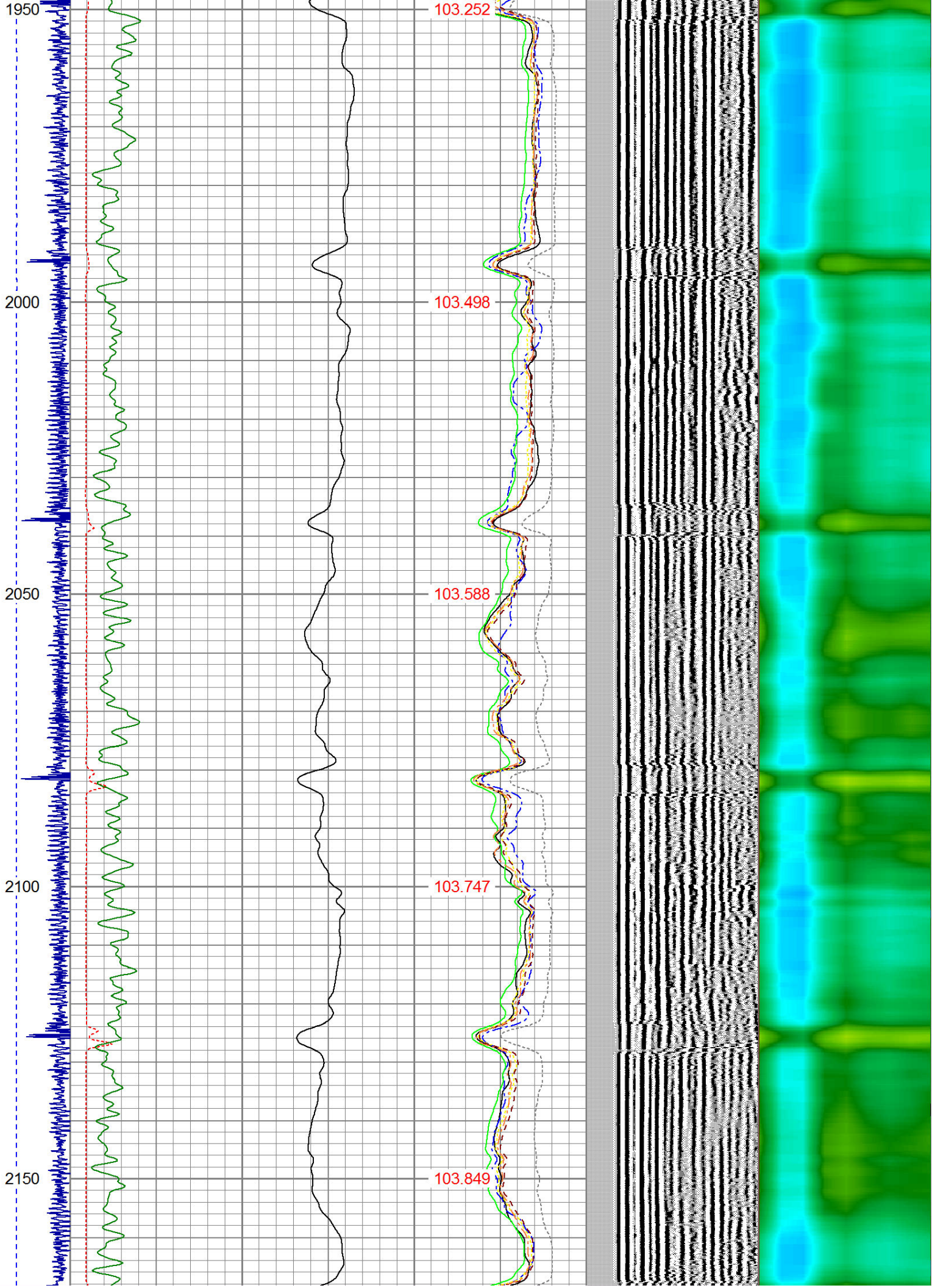
102.566

102.854

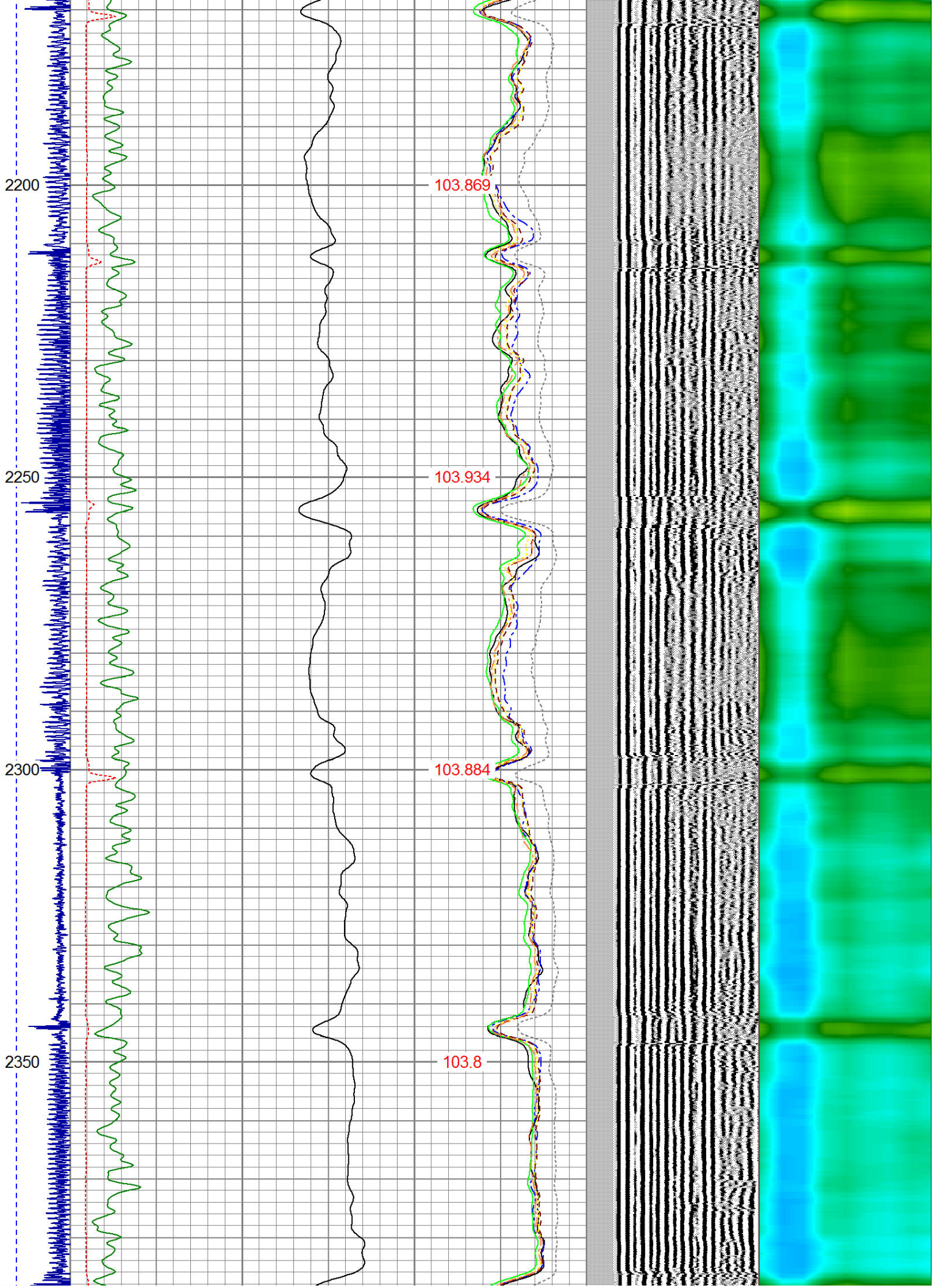
103.061



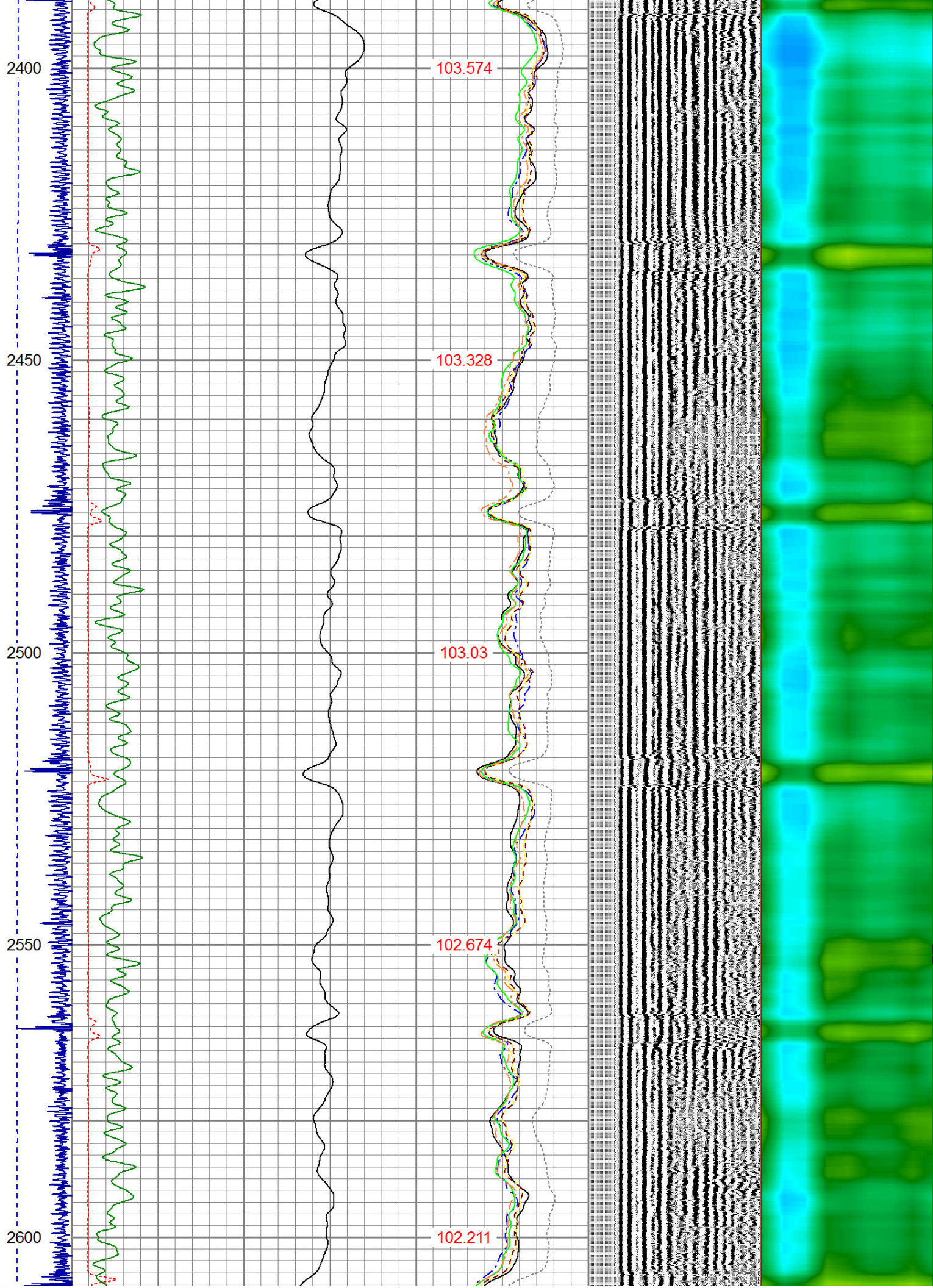




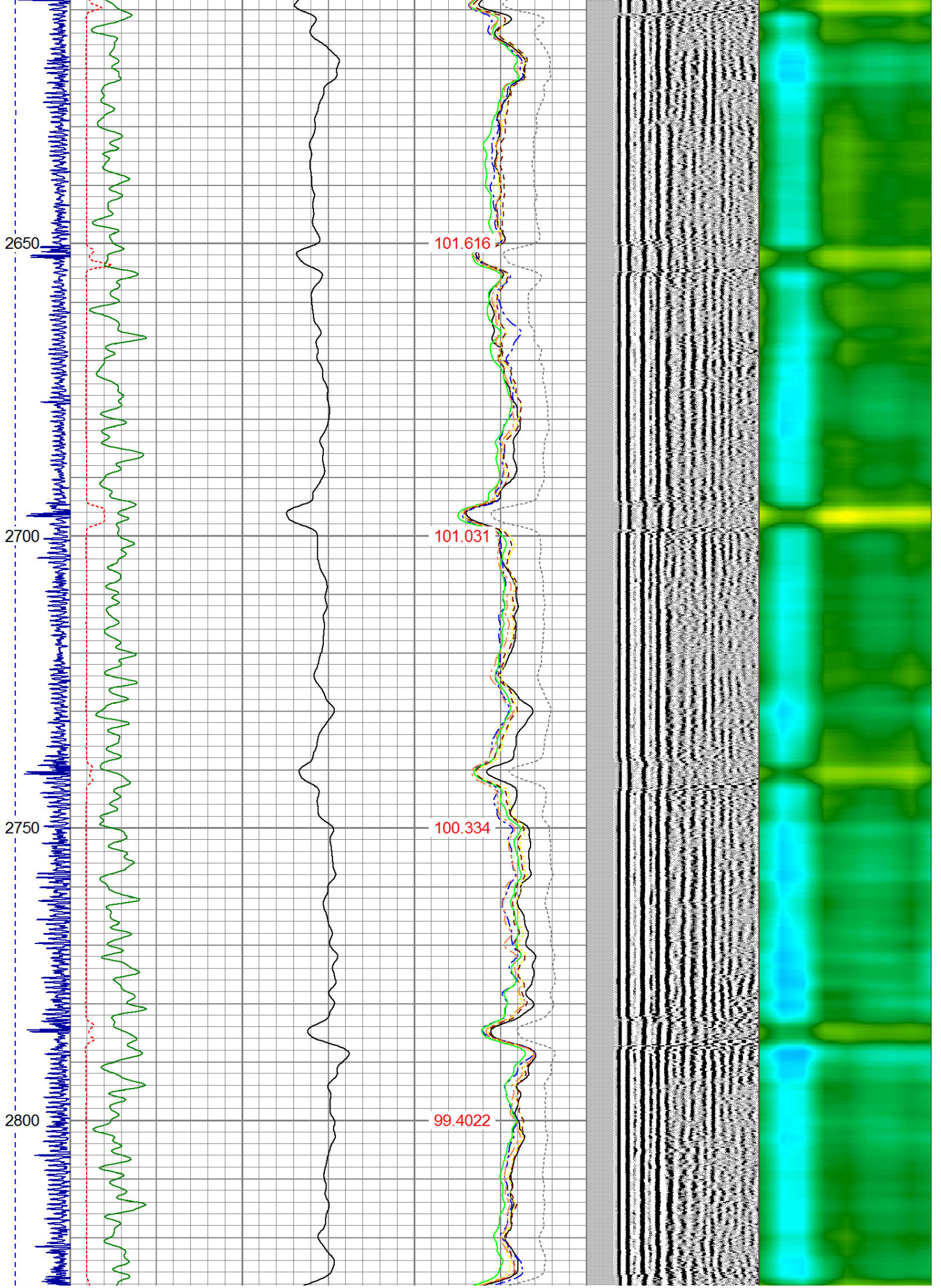




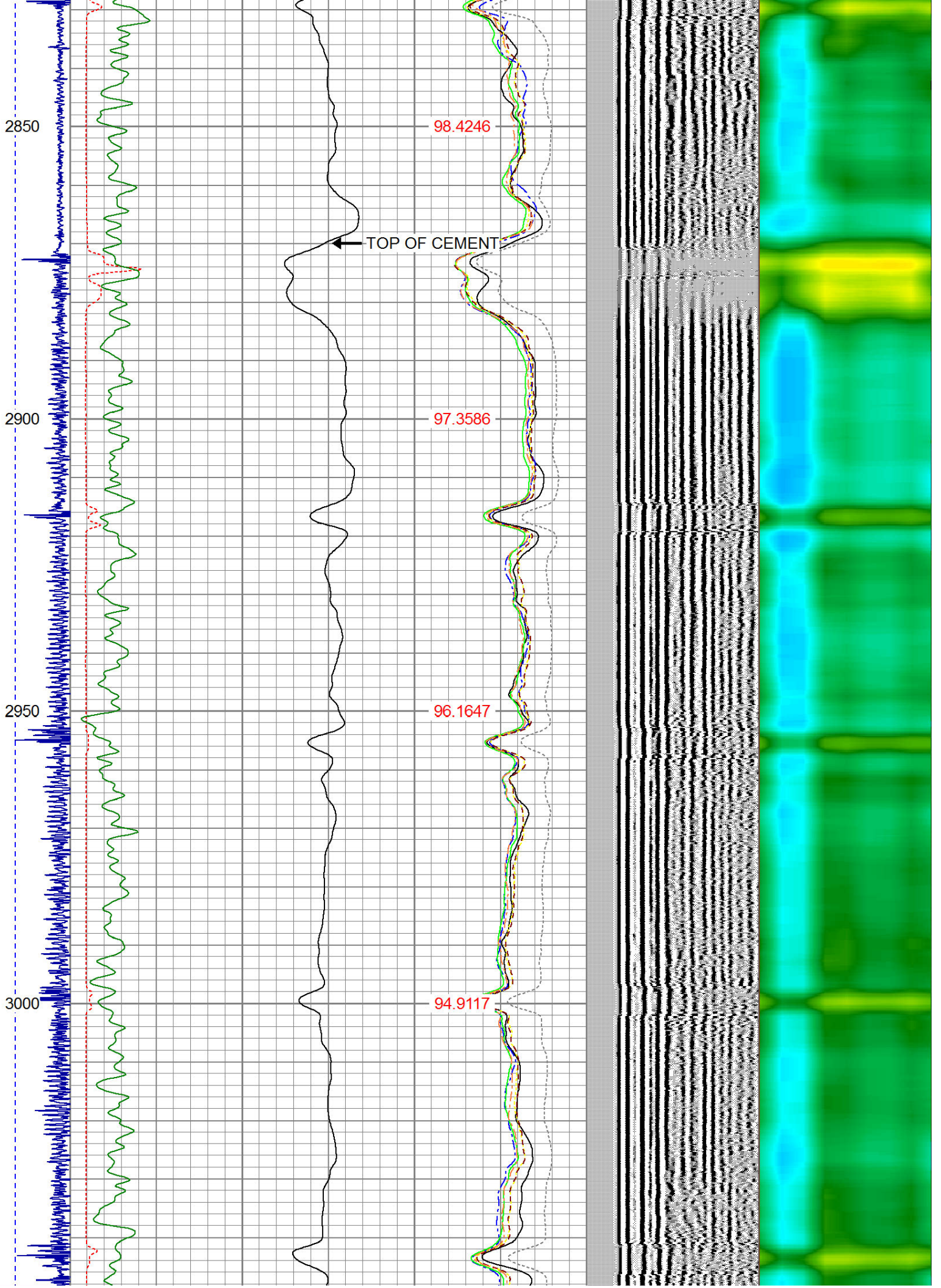




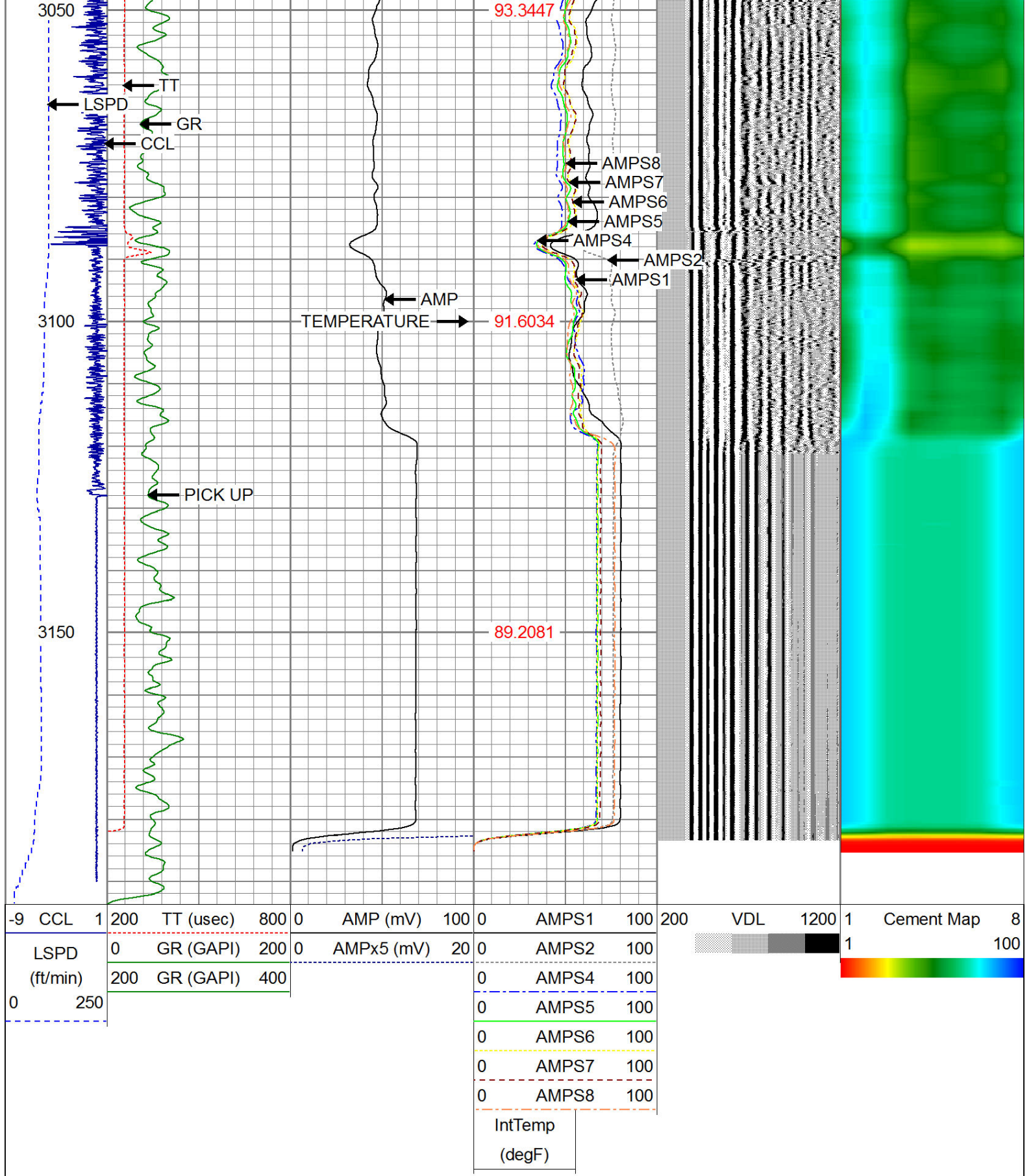












**WARRIOR**  
ENERGY SERVICES

Company KERR McGEE OIL AND GAS

Well STATE 6-16

Field WATTENBERG

County WELD



STATE OF NEW YORK  
IN SENATE  
January 12, 1910.

State

CO