

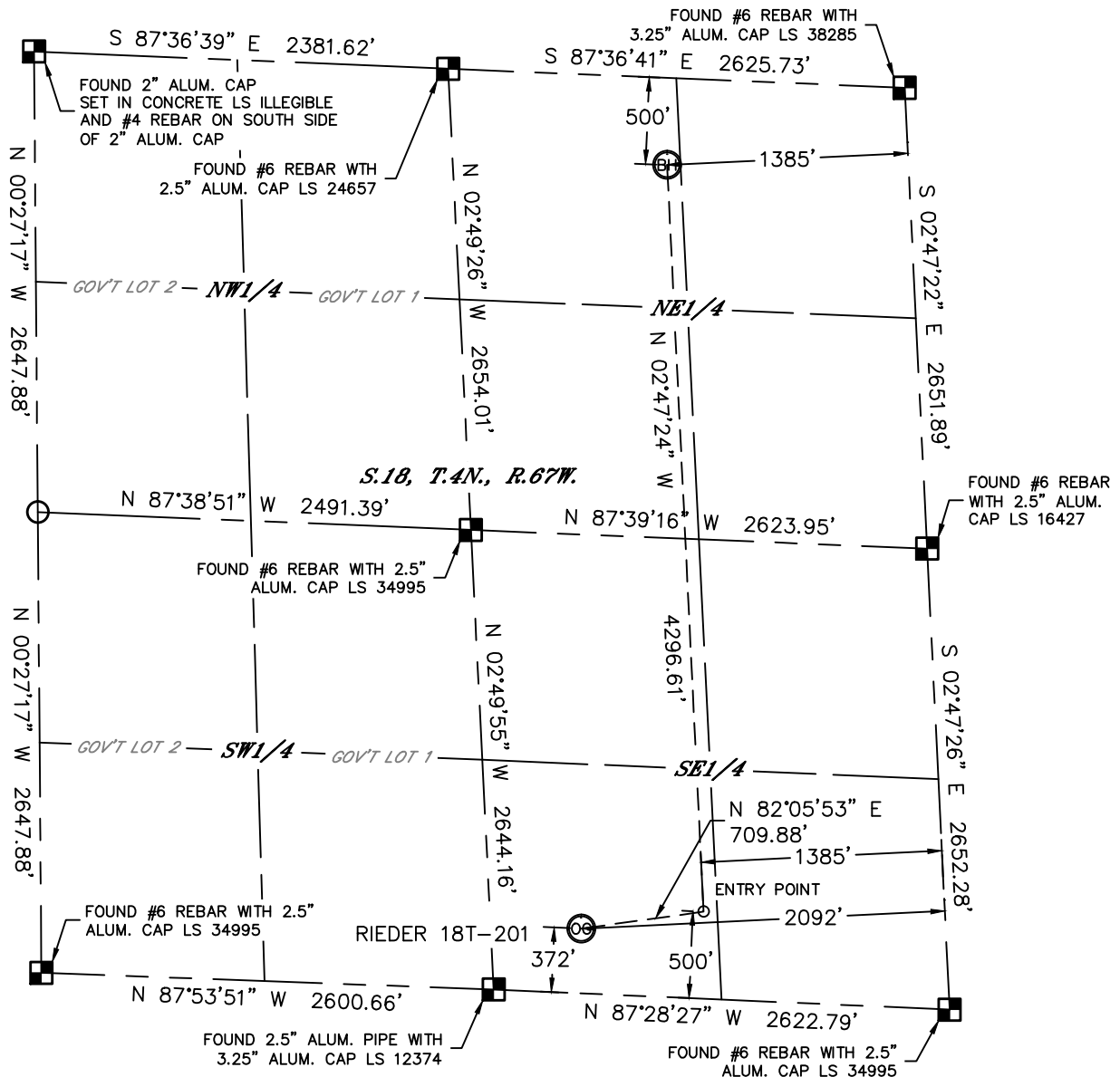


Lat40°, Inc. 1635 Foxtrail Drive, Suite 325 Loveland, CO 970-776-3321

WELL LOCATION CERTIFICATE

THIS MAP DOES NOT REPRESENT A BOUNDARY SURVEY

SECTION: 18
TOWNSHIP: 4N
RANGE: 67W



In accordance with a request from Mac Neumann with PDC ENRGY Lat40°, Inc. has determined the surface location of the RIEDER 18T-201 to be 372' from the SOUTH line and 2092' from the EAST line and the bottom hole to be 500' from the NORTH line and 1385' from the EAST line as measured at right angles from the section lines of Section 18, Township 4 North, Range 67 West of the Sixth Principal Meridian, County of Weld, State of Colorado.

I hereby state that this Well Location Certificate was prepared by me, or under my direct supervision, that the fieldwork was completed on 6/26/2014, for and on behalf of PDC ENRGY. That this is not a Land Survey Plat or an Improvement Survey Plat, and that it is not to be relied upon for establishment of fence, building, or other future improvement lines.

SURFACE LOCATION

LAT: 40.30721°N
LONG: 104.93060°W
PDOP: 1.5
ELEV: 4811'
1/4,1/4: SWSE

BOTTOM HOLE

LAT: 40.31924°N
LONG: 104.92873°W

ENTRY POINT

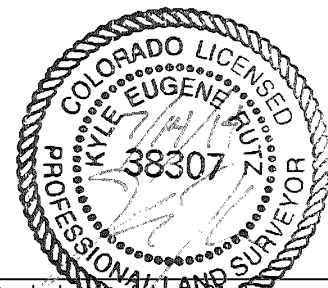
LAT: 40.30746°N
LONG: 104.92807°W

LEGEND

- = ALIQUOT MONUMENT AS DESCRIBED
- = CALCULATED POSITION

Kyle E. Rutz—On behalf of Lat40°, Inc.
Colorado Licensed Professional
Land Surveyor No. 38307

DATE: 7/14/2014
PROJECT#: 2014019



NOTE:

- 1) Bearings shown are Grid Bearings of the Colorado State Plane Coordinate System, North Zone, North American Datum 1983. The lineal dimensions as contained herein are based upon the "U.S. Survey Foot."
- 2) Ground elevations are based on an observed GPS elevation (NAVD 1988 DATUM).
- 3) IMPROVEMENTS: See LOCATION DRAWING for all visible improvements within 500' of disturbed area.
- 4) SURFACE USE: CROP LAND
- 5) INSTRUMENT OPERATOR: ADAM KELLY
- 6) NEAREST CULTURAL ITEMS:
BUILDING: ±521' SE
BUILDING UNIT: ±649' SE
HIGH OCCUPANCY BUILDING UNIT: 5280'+
DESIGNATED OUTSIDE ACTIVITY AREA: 5280'+
PUBLIC ROAD: (CR 44) 356' S
ABOVEGROUND UTILITY: 399' S
RAILROAD: 5280'+
PROPERTY LINE: 372' S

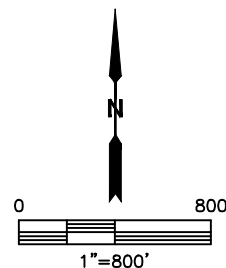
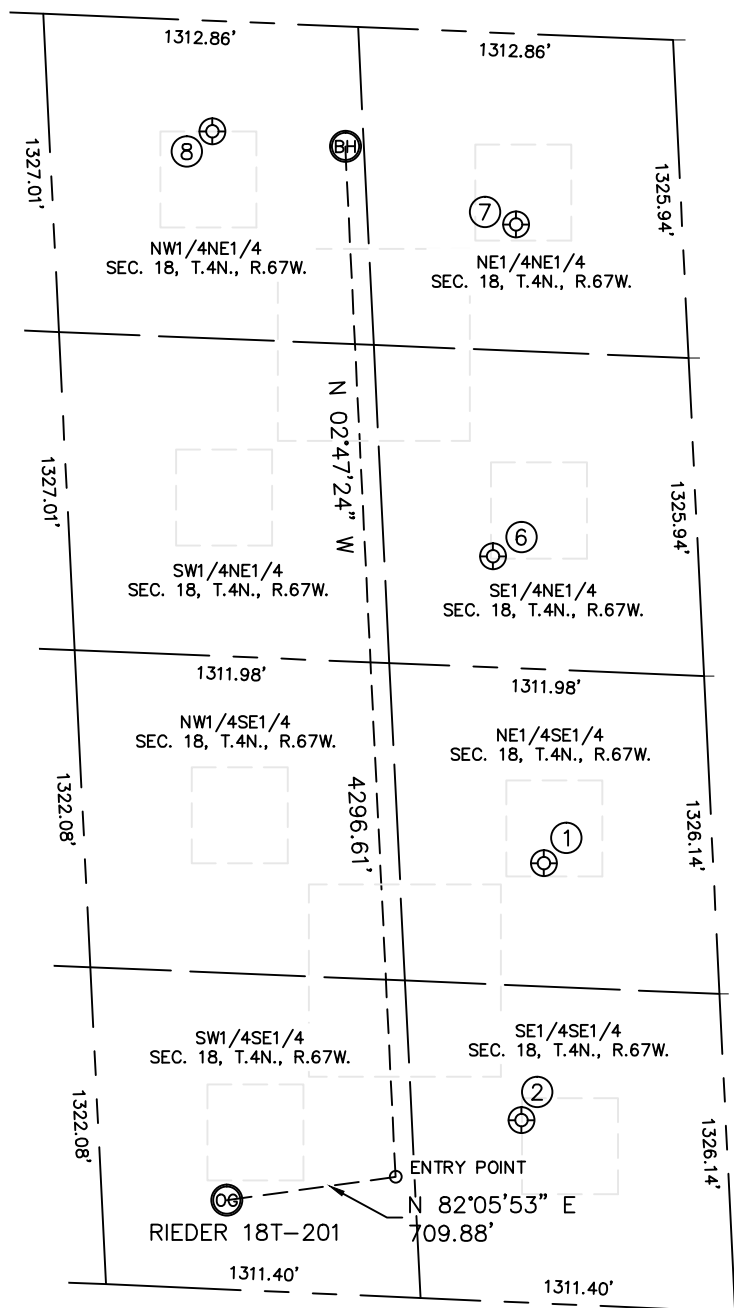


Lat40°, Inc. 1635 Foxtrail Drive, Suite 325 Loveland, CO 970-776-3321

SITE SKETCH

RIEDER 18T-201

SECTION: 18
TOWNSHIP: 4N
RANGE: 67W



| WELL NO. | WELL NAME | SHL FOOTAGE | | | | SHL LAT° | SHL LONG° | PDOP | ELEV (FT.) | 1/4/1/4 |
|----------|-------------------|-------------|-----|------|-----|----------|------------|------|------------|---------|
| 1 | EVERY-BROOKS 18-1 | 1832 | FSL | 705 | FEL | 40.31103 | -104.92583 | 1.8 | 4802 | NESE |
| 2 | A.R. 18-44 | 759 | FSL | 851 | FEL | 40.30810 | -104.92619 | 1.7 | 4805 | SESE |
| 6 | CARLSON 18-2 | 2181 | FNL | 854 | FEL | 40.31454 | -104.92656 | 1.9 | 4802 | NESE |
| 7 | CARLSON 18-3 | 795 | FNL | 691 | FEL | 40.31834 | -104.92618 | 1.9 | 4812 | NENE |
| 8 | CARLSON 18-1 | 460 | FNL | 1935 | FEL | 40.31943 | -104.93071 | 2.2 | 4841 | NWNE |

DATE: 7/14/2014
PROJECT#: 2014019