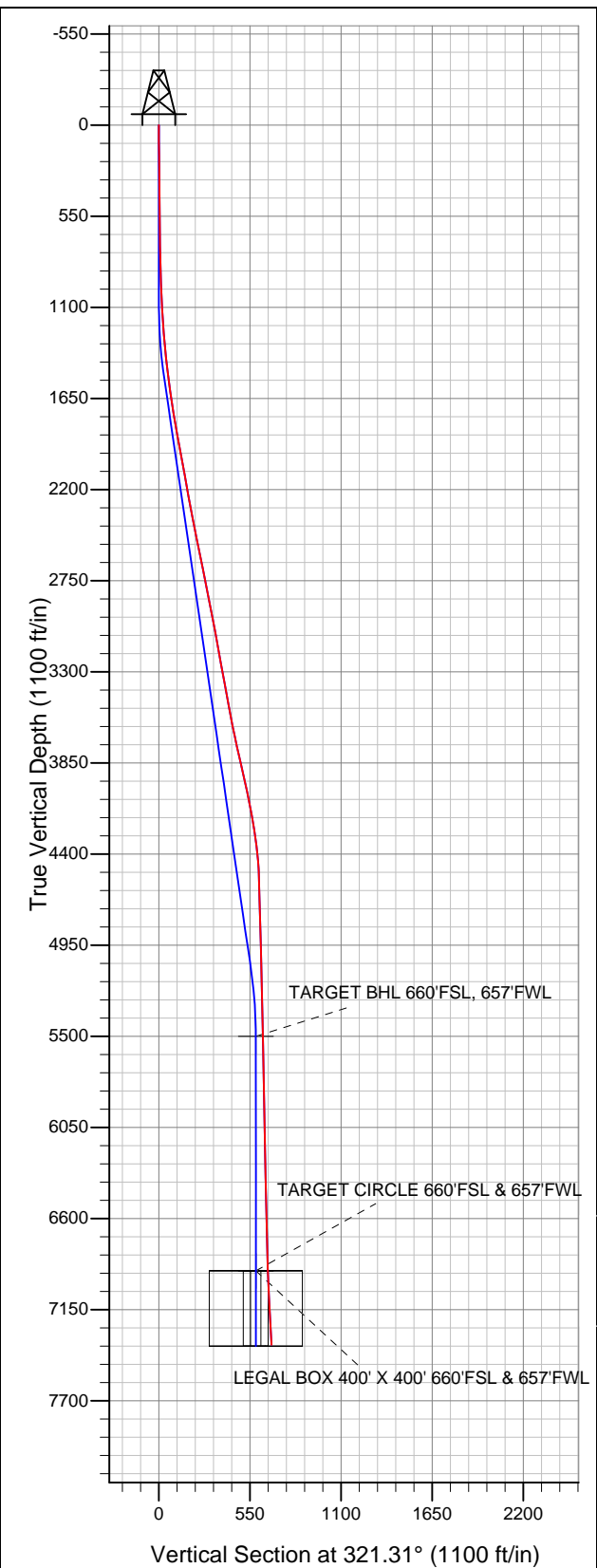


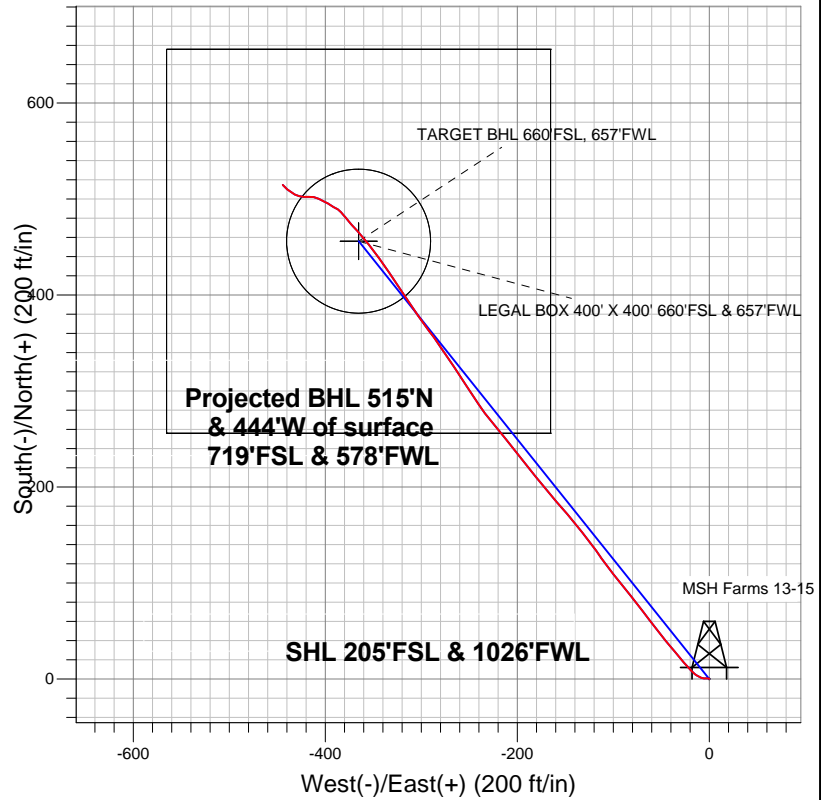


Well Name: MSH Farms 13-15

Surface Location: MSH Farms 12-15 Pad Sec.15-T7N-R67W
North American Datum 1983 US State Plane 1983 Colorado Northern Zone
Ground Elevation: 5054.0
+N/-S +E/-W Northing Easting Latitude Longitude Slot
0.0 0.0 1450181.58 3170825.07 40.567522 -104.885123
Original Well Elev WELL @ 5070.0ft (Original Well Elev)



Bayswater Exploration & Production, LLC



LEGEND

- MSH Farms 13-15, Wellbore #1, Plan #1 (4-22-13) V0
- Wellbore #1
- Survey #1

Final Survey Plot

Projected Final Survey -
7417'MD & 7362'TVD @ 680'VS
3.1 deg Inc 314.7 deg AZ

Project: SEC.15-T7N-R67W
Site: MSH Farms 12-15 Pad Sec.15-T7N-R67W
Well: MSH Farms 13-15
Plan: Wellbore #1



Bayswater Exploration & Production, LLC

SEC.15-T7N-R67W

MSH Farms 12-15 Pad Sec.15-T7N-R67W

MSH Farms 13-15

Wellbore #1

Survey: Survey #1

Standard Survey Report

29 October, 2013



Company:	Bayswater Exploration & Production, LLC	Local Co-ordinate Reference:	Well MSH Farms 13-15
Project:	SEC.15-T7N-R67W	TVD Reference:	WELL @ 5070.0ft (Original Well Elev)
Site:	MSH Farms 12-15 Pad Sec.15-T7N-R67W	MD Reference:	WELL @ 5070.0ft (Original Well Elev)
Well:	MSH Farms 13-15	North Reference:	True
Wellbore:	Wellbore #1	Survey Calculation Method:	Minimum Curvature
Design:	Wellbore #1	Database:	Landmark

Project	SEC.15-T7N-R67W		
Map System:	US State Plane 1983	System Datum:	Mean Sea Level
Geo Datum:	North American Datum 1983		Using Well Reference Point
Map Zone:	Colorado Northern Zone		Using geodetic scale factor

Site		MSH Farms 12-15 Pad Sec.15-T7N-R67W				
Site Position:		Northing:	1,450,181.70ft	Latitude:	40.567522	
From:	Lat/Long	Easting:	3,170,840.07ft	Longitude:	-104.885069	
Position Uncertainty:		0.0 ft	Slot Radius:	"	Grid Convergence:	0.40 °

Well	MSH Farms 13-15					
Well Position	+N-S	0.0 ft	Northing:	1,450,181.58 ft	Latitude:	40.567522
	+E-W	0.0 ft	Easting:	3,170,825.07 ft	Longitude:	-104.885123
Position Uncertainty		0.0 ft	Wellhead Elevation:	ft	Ground Level:	5,054.0 ft

Wellbore	Wellbore #1				
Magnetics	Model Name	Sample Date	Declination (°)	Dip Angle (°)	Field Strength (nT)
	IGRF2010	4/22/2013	8.69	67.10	53,009

Design	Wellbore #1				
Audit Notes:					
Version:	1.0	Phase:	ACTUAL	Tie On Depth:	0.0
Vertical Section:	Depth From (TVD) (ft)	+N/-S (ft)	+E/-W (ft)	Direction (°)	
	0.0	0.0	0.0	321.31	

Survey Program	Date	10/29/2013			
From (ft)	To (ft)	Survey (Wellbore)	Tool Name	Description	
96.0	7,417.0	Survey #1 (Wellbore #1)	MWD	MWD - Standard	

Survey										
Measured Depth (ft)	Inclination (°)	Azimuth (°)	Vertical Depth (ft)	+N/-S (ft)	+E/-W (ft)	Vertical Section (ft)	Dogleg Rate (°/100ft)	Build Rate (°/100ft)	Turn Rate (°/100ft)	
0.0	0.00	0.00	0.0	0.0	0.0	0.0	0.00	0.00	0.00	
96.0	0.30	320.60	96.0	0.2	-0.2	0.3	0.31	0.31	0.00	
186.0	0.70	277.90	186.0	0.5	-0.9	0.9	0.58	0.44	-47.44	
276.0	0.70	278.60	276.0	0.6	-1.9	1.7	0.01	0.00	0.78	
367.0	0.80	272.80	367.0	0.7	-3.1	2.5	0.14	0.11	-6.37	
458.0	0.50	272.00	458.0	0.8	-4.2	3.2	0.33	-0.33	-0.88	
549.0	0.90	255.40	549.0	0.6	-5.2	3.7	0.49	0.44	-18.24	
640.0	1.20	288.50	640.0	0.7	-6.8	4.8	0.73	0.33	36.37	
741.0	1.60	293.20	740.9	1.6	-9.1	7.0	0.41	0.40	4.65	
842.0	1.60	299.00	841.9	2.9	-11.7	9.5	0.16	0.00	5.74	
970.0	2.10	306.80	969.8	5.1	-15.1	13.4	0.44	0.39	6.09	
1,098.0	2.90	318.90	1,097.7	9.0	-19.1	19.0	0.75	0.63	9.45	
1,227.0	3.90	317.10	1,226.5	14.6	-24.2	26.6	0.78	0.78	-1.40	

Company:	Bayswater Exploration & Production, LLC	Local Co-ordinate Reference:	Well MSH Farms 13-15
Project:	SEC.15-T7N-R67W	TVD Reference:	WELL @ 5070.0ft (Original Well Elev)
Site:	MSH Farms 12-15 Pad Sec.15-T7N-R67W	MD Reference:	WELL @ 5070.0ft (Original Well Elev)
Well:	MSH Farms 13-15	North Reference:	True
Wellbore:	Wellbore #1	Survey Calculation Method:	Minimum Curvature
Design:	Wellbore #1	Database:	Landmark

Survey

Measured Depth (ft)	Inclination (°)	Azimuth (°)	Vertical Depth (ft)	+N/-S (ft)	+E/-W (ft)	Vertical Section (ft)	Dogleg Rate (°/100ft)	Build Rate (°/100ft)	Turn Rate (°/100ft)
1,355.0	5.90	321.00	1,354.0	22.9	-31.4	37.5	1.58	1.56	3.05
1,483.0	6.90	319.80	1,481.2	33.9	-40.5	51.8	0.79	0.78	-0.94
1,611.0	8.10	321.70	1,608.1	46.9	-51.0	68.5	0.96	0.94	1.48
1,740.0	9.00	322.20	1,735.7	62.0	-62.8	87.7	0.70	0.70	0.39
1,868.0	10.40	323.30	1,861.8	79.2	-75.9	109.2	1.10	1.09	0.86
1,996.0	10.50	319.40	1,987.7	97.3	-90.4	132.4	0.56	0.08	-3.05
2,125.0	9.90	324.50	2,114.7	115.2	-104.5	155.2	0.84	-0.47	3.95
2,253.0	10.60	323.60	2,240.6	133.7	-117.8	178.0	0.56	0.55	-0.70
2,381.0	11.10	322.00	2,366.3	152.9	-132.4	202.1	0.46	0.39	-1.25
2,509.0	11.20	319.20	2,491.9	172.0	-148.1	226.8	0.43	0.08	-2.19
2,638.0	12.00	319.80	2,618.3	191.7	-164.9	252.7	0.63	0.62	0.47
2,766.0	11.20	319.90	2,743.7	211.4	-181.5	278.5	0.63	-0.63	0.08
2,894.0	11.00	322.60	2,869.3	230.6	-197.0	303.1	0.44	-0.16	2.11
3,022.0	10.70	321.70	2,995.0	249.6	-211.8	327.2	0.27	-0.23	-0.70
3,150.0	10.40	320.10	3,120.8	267.8	-226.5	350.6	0.33	-0.23	-1.25
3,279.0	10.60	326.30	3,247.7	286.6	-240.6	374.1	0.89	0.16	4.81
3,407.0	10.20	326.80	3,373.6	305.9	-253.3	397.1	0.32	-0.31	0.39
3,535.0	10.50	326.60	3,499.5	325.1	-265.9	420.0	0.24	0.23	-0.16
3,663.0	11.30	325.40	3,625.2	345.2	-279.5	444.1	0.65	0.63	-0.94
3,792.0	12.50	324.30	3,751.4	366.9	-294.8	470.7	0.95	0.93	-0.85
3,920.0	13.30	324.90	3,876.2	390.2	-311.4	499.2	0.63	0.63	0.47
4,048.0	12.20	327.30	4,001.0	413.6	-327.1	527.3	0.95	-0.86	1.88
4,177.0	10.60	324.90	4,127.5	434.8	-341.3	552.7	1.29	-1.24	-1.86
4,305.0	9.10	319.90	4,253.6	452.2	-354.6	574.6	1.35	-1.17	-3.91
4,433.0	6.90	320.00	4,380.3	465.8	-366.1	592.4	1.72	-1.72	0.08
4,561.0	1.80	315.00	4,507.9	473.1	-372.4	602.1	3.99	-3.98	-3.91
4,732.0	1.80	322.90	4,678.8	477.2	-376.0	607.5	0.14	0.00	4.62
4,903.0	1.10	318.90	4,849.8	480.5	-378.7	611.8	0.41	-0.41	-2.34
5,074.0	1.50	318.40	5,020.7	483.5	-381.2	615.7	0.23	0.23	-0.29
5,245.0	1.70	318.50	5,191.7	487.0	-384.4	620.4	0.12	0.12	0.06
5,416.0	1.10	296.40	5,362.6	489.7	-387.5	624.5	0.47	-0.35	-12.92
5,552.6	1.26	295.66	5,499.2	490.9	-390.1	627.0	0.12	0.12	-0.54
TARGET BHL 660'FSL, 657'FWL									
5,587.0	1.30	295.50	5,533.6	491.2	-390.8	627.7	0.12	0.12	-0.46
5,758.0	1.80	306.30	5,704.5	493.7	-394.7	632.0	0.34	0.29	6.32
5,929.0	0.50	288.60	5,875.5	495.5	-397.5	635.3	0.78	-0.76	-10.35
6,099.0	1.10	298.50	6,045.5	496.5	-399.7	637.4	0.36	0.35	5.82
6,270.0	1.20	295.70	6,216.4	498.1	-402.7	640.5	0.07	0.06	-1.64
6,441.0	1.30	297.10	6,387.4	499.7	-406.1	643.9	0.06	0.06	0.82
6,612.0	1.50	291.80	6,558.3	501.4	-409.9	647.6	0.14	0.12	-3.10
6,783.0	1.70	269.50	6,729.3	502.2	-414.5	651.1	0.38	0.12	-13.04
6,954.0	3.50	271.60	6,900.1	502.4	-422.3	656.1	1.05	1.05	1.23
6,966.1	3.46	273.27	6,912.1	502.4	-423.0	656.6	0.89	-0.30	13.90
TARGET CIRCLE 660'FSL & 657'FWL - LEGAL BOX 400' X 400' 660'FSL & 657'FWL									
7,125.0	3.30	297.40	7,070.8	504.8	-431.8	663.9	0.89	-0.10	15.18
7,296.0	3.10	312.60	7,241.5	510.2	-439.6	673.0	0.51	-0.12	8.89
7,417.0	3.10	314.70	7,362.3	514.7	-444.4	679.5	0.09	0.00	1.74

Company: Bayswater Exploration & Production, LLC
Project: SEC.15-T7N-R67W
Site: MSH Farms 12-15 Pad Sec.15-T7N-R67W
Well: MSH Farms 13-15
Wellbore: Wellbore #1
Design: Wellbore #1

Local Co-ordinate Reference: Well MSH Farms 13-15
TVD Reference: WELL @ 5070.0ft (Original Well Elev)
MD Reference: WELL @ 5070.0ft (Original Well Elev)
North Reference: True
Survey Calculation Method: Minimum Curvature
Database: Landmark

Checked By: _____ Approved By: _____ Date: _____