



October 2, 2014

Director Lepore  
Colorado Oil and Gas Conservation Commission  
1120 Lincoln Street, Suite 801  
Denver, CO 80203

Re: 30 Day Certification Letter – Rule 318 A(e)  
Weis 12-9NHZ  
SWSE of Section 4, Township 4N, Range 68W  
Weld County, Colorado

Dear Director Lepore,

Synergy Resources Corporation (SRC) is planning to drill the captioned horizontal well in accordance with the provisions of COGCC Rule 318A.(e).

SRC's proposed wellbore spacing unit consists of the N/2 of Section 9 Township 4N Range 68W, creating a 320-acre wellbore spacing unit for the Codell formation.

Synergy Resources Corporation hereby certifies to the Director that SRC owns 100% interest in the proposed well bore spacing unit for the above said well, and requests the Director to approve the Horizontal well.

If you have any questions or issues regarding this permit, please contact Craig Rasmuson at (970) 737-1073.

Sincerely,

*Craig Rasmuson*

Craig Rasmuson  
Synergy Resources Corporation

# WELL LOCATION CERTIFICATE

THIS MAP DOES NOT REPRESENT A BOUNDARY SURVEY

SECTION 4  
TOWNSHIP 4 NORTH  
RANGE 68 WEST

NW COR. SEC. 4  
FOUND #6 REB.

W/ 2.5" A.C.  
PLS 30462  
IN MON BOX

N 1/4 COR. SEC. 4

FOUND #6 REB.

W/ 2.5" A.C.

PLS 30462  
IN MON BOX

NE COR. SEC. 4  
FOUND #6 REB.

W/ 3.25" A.C.  
PLS 7242  
IN MON BOX

E 1/4 COR. SEC. 4

FOUND #6 REB.

W/ 3.25"

PLS 23520

IN MON BOX

W 1/4 COR. SEC. 5

FOUND #6 REB.

W/ 3.25" A.C.

PLS 22098

C 1/4 COR. SEC. 4

FOUND #6 REB.

W/ 2.5" A.C.

PLS 30462

REFERENCE

MONUMENT

SW COR. SEC. 4

FOUND #6 REB.

W/ 2.5" A.C.

PLS 14166

IN ACCORDANCE WITH A REQUEST FROM CRAIG RASMUSON - SYNERGY RESOURCES, BASELINE ENGINEERING CORP. HAS DETERMINED THE LOCATION OF THE SRC WEIS 12-9NHZ TO BE 171' FSL AND 1764' FEL, AS MEASURED AT NINETY (90) DEGREES FROM THE SECTION LINE OF SECTION 4, TOWNSHIP 4 NORTH, RANGE 68 WEST AND THE BOTTOM HOLE LOCATION TO BE 460' FWL AND 1970' FNL OF SECTION 9, TOWNSHIP 4 NORTH, RANGE 68 WEST, 6TH PRINCIPAL MERIDIAN, WELD COUNTY, COLORADO.

I HEREBY CERTIFY THAT THIS WELL LOCATION CERTIFICATE WAS PREPARED BY ME, OR UNDER MY DIRECT SUPERVISION, THAT THE FIELD WORK WAS COMPLETED ON 12/12/2013, THAT IT IS NOT A LAND SURVEY PLAT OR AN IMPROVEMENT SURVEY PLAT, AND THAT IT IS NOT TO BE RELIED UPON FOR ESTABLISHMENT OF FENCE, BUILDING, OR OTHER FUTURE IMPROVEMENT LINES.

Scale 1" = 1000 ft

## NOTES:

- 1) LAT/LONG SHOWN ARE BASED ON A GPS OBSERVATION (NAD83).
- 2) BEARINGS SHOWN ARE GRID BEARINGS OF THE COLORADO STATE PLANE COORDINATE SYSTEM, NORTH ZONE, NORTH AMERICAN DATUM 1983/2007
- 3) GROUND ELEVATIONS ARE BASED ON A GPS OBSERVATION (NAVD 88 DATUM).
- 4) ALL DISTANCES SHOWN ARE FIELD MEASURED UNLESS OTHERWISE NOTED.
- 5) THE NEAREST EXISTING WELL IS: NONE IN SECTION.
- 6) IMPROVEMENTS. SEE LOCATION DRAWING EXHIBIT FOR ALL VISIBLE IMPROVEMENTS WITHIN 600' OF WELL HEAD.
- 7) SURFACE USE: PASTURE/AGRICULTURAL
- 8) OPERATOR NAME: BRETT BIRCH

NOTICE: According to Colorado law you MUST commence any legal action based upon any defect in this W.L.C. within three years after you first discover such defect. In no event may any action based upon any defect in this W.L.C. be commenced more than ten years from this said date of the certification shown hereon.

## SURFACE HOLE:

LATITUDE: 40.335726° N  
LONGITUDE: 105.005228° W  
PDOP: 1.2

1/4, 1/4: SW1/4SE1/4  
NEAREST PROPERTY LINE 171' S

## BOTTOM HOLE:

LATITUDE: 40.329699° N  
LONGITUDE: 105.016163° W

## TARGET #1:

LATITUDE: 40.329866° N  
LONGITUDE: 104.998925° W

## TARGET #2:

LATITUDE: 40.329851° N  
LONGITUDE: 105.000504° W

## LEGEND



FOUND/SET SURVEY MONUMENT PER  
MONUMENT RECORD EXCEPTIONS NOTED



CALCULATED SURVEY MONUMENT  
POSITION



(C) - CALCULATED DIMENSION



AARON A. DEMÉ

Professional Land Surveyor Registration No. 38285  
State of Colorado  
FOR AND ON BEHALF OF BASELINE ENGINEERING CORP.

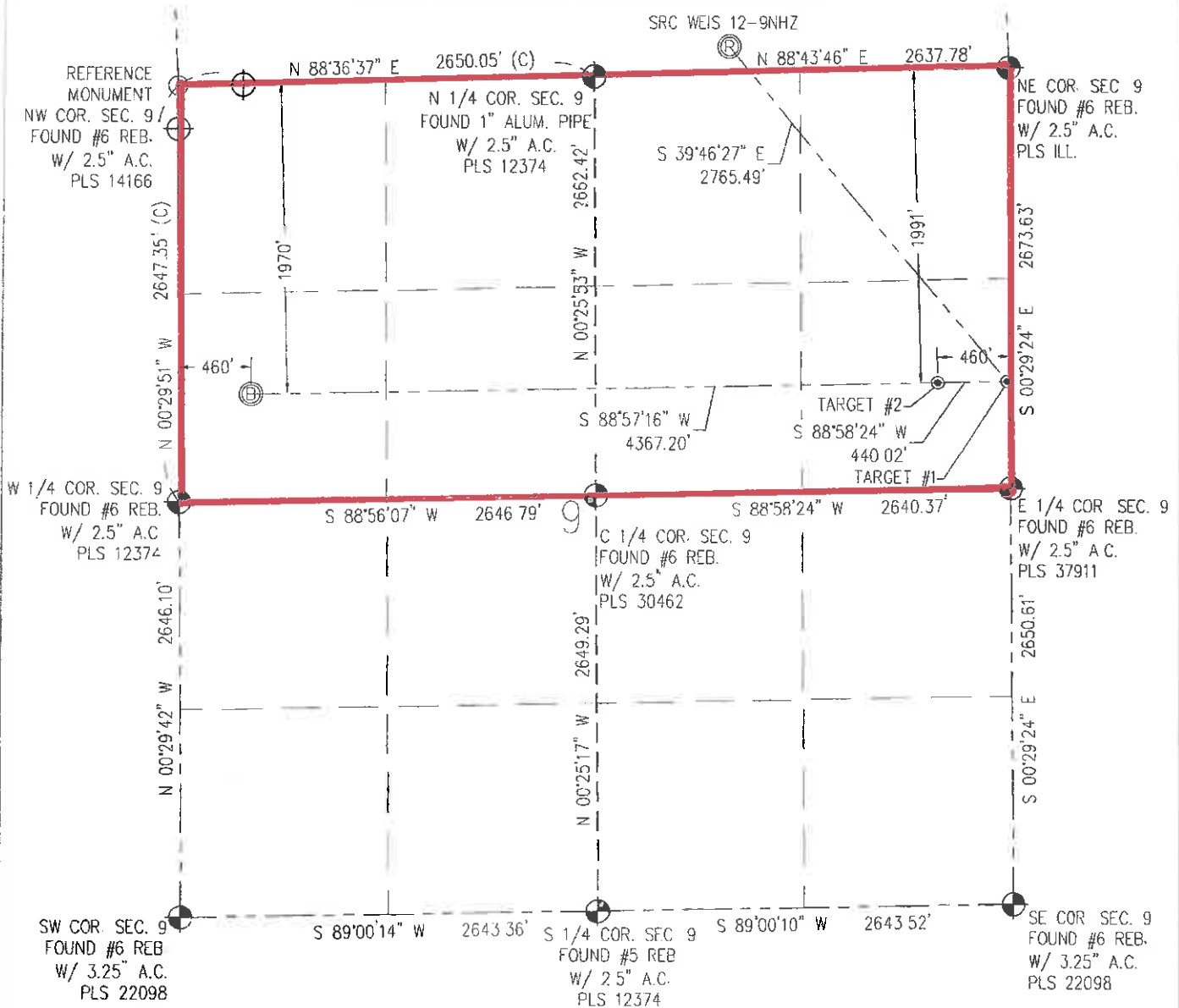
Completed

10/1/2014

PROJECT #: SYN04N68W04-01

**WELL LOCATION CERTIFICATE**  
**THIS MAP DOES NOT REPRESENT A BOUNDARY SURVEY**

SRC WEIS 12-9NHZ



IN ACCORDANCE WITH A REQUEST FROM CRAIG RASMUSON - SYNERGY RESOURCES, BASELINE ENGINEERING CORP. HAS DETERMINED THE LOCATION OF THE SRC WEIS 12-9NHZ TO BE 171' FSL AND 1764' FEL, AS MEASURED AT NINETY (90) DEGREES FROM THE SECTION LINE OF SECTION 4, TOWNSHIP 4 NORTH, RANGE 68 WEST AND THE BOTTOM HOLE LOCATION TO BE 460' FSL AND 1970' FSL OF SECTION 9, TOWNSHIP 4 NORTH, RANGE 68 WEST, 6TH PRINCIPAL MERIDIAN WELD COUNTY, COLORADO

I HEREBY CERTIFY THAT THIS WELL LOCATION CERTIFICATE WAS PREPARED BY ME, OR UNDER MY DIRECT SUPERVISION, THAT THE FIELD WORK WAS COMPLETED ON 12/12/2013, THAT IT IS NOT A LAND SURVEY PLAT OR AN IMPROVEMENT SURVEY PLAT, AND THAT IT IS NOT TO BE RELIED UPON FOR ESTABLISHMENT OF FENCE, BUILDING, OR OTHER FUTURE IMPROVEMENT LINES

Scale 1" = 1000 ft

**NOTES:**

- 1) LAT/LONG SHOWN ARE BASED ON A GPS OBSERVATION (NAD83).
- 2) BEARINGS SHOWN ARE GRID BEARINGS OF THE COLORADO STATE PLANE COORDINATE SYSTEM, NORTH ZONE, NORTH AMERICAN DATUM 1983/2007
- 3) GROUND ELEVATIONS ARE BASED ON A GPS OBSERVATION (NAVD 88 DATUM).
- 4) ALL DISTANCES SHOWN ARE FIELD MEASURED UNLESS OTHERWISE NOTED.
- 5) THE NEAREST EXISTING WELL IS: NONE IN SECTION.
- 6) IMPROVEMENTS: SEE LOCATION DRAWING EXHIBIT FOR ALL VISIBLE IMPROVEMENTS WITHIN 600' OF WELL HEAD.
- 7) SURFACE USE: PASTURE/AGRICULTURAL
- 8) OPERATOR NAME: BRETT BIRCH.

NOTICE According to Colorado law you MUST commence any legal action based upon any defect in this W.L.C. within three years after you first discover such defect. In no event may any action based upon any defect in this W.L.C. be commenced more than ten years from this said date of the certification shown hereon.

**SURFACE HOLE:**  
LATITUDE: 40.335726° N  
LONGITUDE: 105.005228° W  
PDOP: 1.2  
1/4, 1/4: SW1/4SE1/4  
NEAREST PROPERTY LINE: 171' S

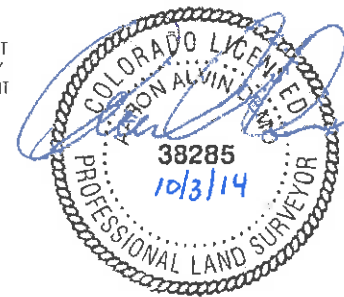
**BOTTOM HOLE:**  
LATITUDE: 40.329699° N  
LONGITUDE: 105.016163° W

**TARGET #1:**  
LATITUDE: 40.329866° N  
LONGITUDE: 104.998926° W

**TARGET #2:**  
LATITUDE: 40.329851° N  
LONGITUDE: 105.000504° W

**LEGEND**

- FOUND/SET SURVEY MONUMENT PER MONUMENT RECORD EXCEPTIONS NOTED
- CALCULATED SURVEY MONUMENT POSITION
- (C) - CALCULATED DIMENSION



AARON A. DEMO  
Professional Land Surveyor Registration No. 38285  
State of Colorado  
FOR AND ON BEHALF OF BASELINE ENGINEERING CORP.

Completed  
10/1/2014

PROJECT #SYND4N68W04-01