

# Synergy Resources

Well Name: **SRC Weis 12-9NHZ**

Surface Location: SRC Kiehn Pad Sec.4-T4N-R68W

North American Datum 1983, US State Plane 1983, Colorado Northern Zone

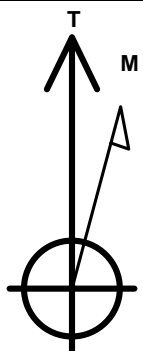
Ground Elevation: 5064.0

+N/-S	+E/-W	Northing	Easting	Latitude	Longitude	Slot
0.0	0.0	1365530.52	3137929.06	40.335726	-105.005228	

Original Well Elev WELL @ 5077.0ft (Original Well Elev)

## WELLBORE TARGET DETAILS

Name	TVD	+N/-S	+E/-W	Shape
SHL 171'FSL & 1764'FEL, Sec.4	1.0	0.0	0.0	Point
BHL 1970'FNL & 460'FWL, Sec.9	7045.0	-2195.5	-3048.8	Point



Azimuths to True North  
Magnetic North: 8.54°

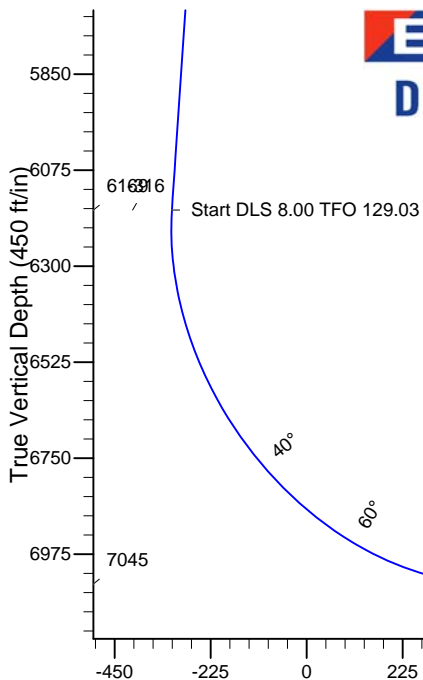
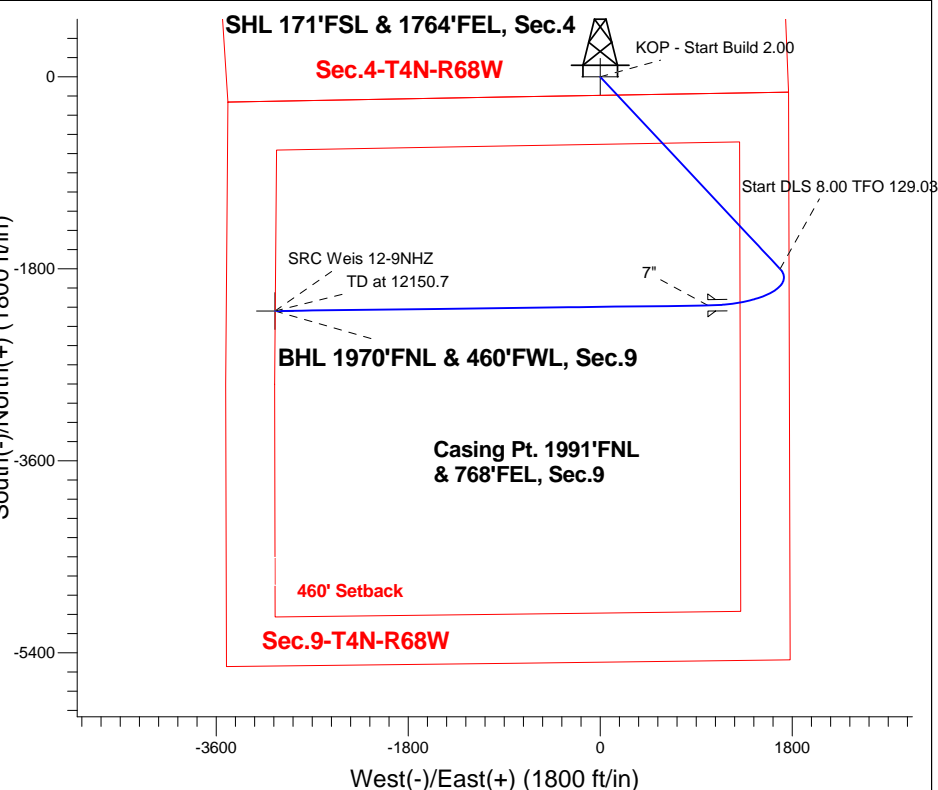
Magnetic Field  
Strength: 52722.9snT  
Dip Angle: 66.85°  
Date: 10/2/2014  
Model: IGRF2010

## ANNOTATIONS

TVD	MD	Annotation
700.0	700.0	KOP - Start Build 2.00
6168.8	6742.1	Start DLS 8.00 TFO 129.03
7045.0	12150.7	TD at 12150.7

SRC Kiehn Pad Sec.4-T4N-R68W  
SRC Weis 12-9NHZ  
Plan #1 (10-2-14)  
16:40, October 03 2014

South(-)/North(+) (1800 ft/in)



**ENSIGN**  
Directional

## SECTION DETAILS

Sec	MD	Inc	Azi	TVD	+N/-S	+E/-W	DLeg	TFace	VSec	Target
1	0.0	0.00	0.00	0.0	0.0	0.0	0.00	0.00	0.0	
2	700.0	0.00	0.00	700.0	0.0	0.0	0.00	0.00	0.0	
3	2066.7	27.33	136.89	2015.4	-233.5	218.6	2.00	136.89	-40.9	
4	6742.1	27.33	136.89	6168.8	-1800.6	1685.8	0.00	0.00	-315.8	
5	8092.4	90.00	269.27	7045.0	-2143.8	1009.1	8.00	129.03	433.9	
6	12150.7	90.00	269.27	7045.0	-2195.5	-3048.8	0.00	0.00	3757.0	BHL 1970'FNL & 460'FWL, Sec.9

**BHL 1970'FNL & 460'FWL, Sec.9**

Vertical Section at 234.24° (450 ft/in)



## **Synergy Resources**

**SEC.4-T4N-R68W**

**SRC Kiehn Pad Sec.4-T4N-R68W**

**SRC Weis 12-9NHZ**

**Wellbore #1**

**Plan: Plan #1 (10-2-14)**

## **Standard Planning Report**

**03 October, 2014**

Plan Sections										
Measured Depth (ft)	Inclination (°)	Azimuth (°)	Vertical Depth (ft)	+N/-S (ft)	+E/-W (ft)	Dogleg Rate (°/100ft)	Build Rate (°/100ft)	Turn Rate (°/100ft)	TFO (°)	Target
0.0	0.00	0.00	0.0	0.0	0.0	0.00	0.00	0.00	0.00	
700.0	0.00	0.00	700.0	0.0	0.0	0.00	0.00	0.00	0.00	
2,066.7	27.33	136.89	2,015.4	-233.5	218.6	2.00	2.00	0.00	136.89	
6,742.1	27.33	136.89	6,168.8	-1,800.6	1,685.8	0.00	0.00	0.00	0.00	
8,092.4	90.00	269.27	7,045.0	-2,143.8	1,009.1	8.00	4.64	9.80	129.03	
12,150.7	90.00	269.27	7,045.0	-2,195.5	-3,048.8	0.00	0.00	0.00	0.00	BHL 1970'FNL & 46°

<b>Database:</b>	Landmark	<b>Local Co-ordinate Reference:</b>	Well SRC Weis 12-9NHZ
<b>Company:</b>	Synergy Resources	<b>TVD Reference:</b>	WELL @ 5077.0ft (Original Well Elev)
<b>Project:</b>	SEC.4-T4N-R68W	<b>MD Reference:</b>	WELL @ 5077.0ft (Original Well Elev)
<b>Site:</b>	SRC Kiehn Pad Sec.4-T4N-R68W	<b>North Reference:</b>	True
<b>Well:</b>	SRC Weis 12-9NHZ	<b>Survey Calculation Method:</b>	Minimum Curvature
<b>Wellbore:</b>	Wellbore #1		
<b>Design:</b>	Plan #1 (10-2-14)		

Planned Survey									
Measured Depth (ft)	Inclination (°)	Azimuth (°)	Vertical Depth (ft)	+N/-S (ft)	+E/-W (ft)	Vertical Section (ft)	Dogleg Rate (°/100ft)	Build Rate (°/100ft)	Turn Rate (°/100ft)
0.0	0.00	0.00	0.0	0.0	0.0	0.0	0.00	0.00	0.00
100.0	0.00	0.00	100.0	0.0	0.0	0.0	0.00	0.00	0.00
200.0	0.00	0.00	200.0	0.0	0.0	0.0	0.00	0.00	0.00
300.0	0.00	0.00	300.0	0.0	0.0	0.0	0.00	0.00	0.00
400.0	0.00	0.00	400.0	0.0	0.0	0.0	0.00	0.00	0.00
500.0	0.00	0.00	500.0	0.0	0.0	0.0	0.00	0.00	0.00
600.0	0.00	0.00	600.0	0.0	0.0	0.0	0.00	0.00	0.00
700.0	0.00	0.00	700.0	0.0	0.0	0.0	0.00	0.00	0.00
<b>KOP - Start Build 2.00</b>									
800.0	2.00	136.89	800.0	-1.3	1.2	-0.2	2.00	2.00	0.00
900.0	4.00	136.89	899.8	-5.1	4.8	-0.9	2.00	2.00	0.00
1,000.0	6.00	136.89	999.5	-11.5	10.7	-2.0	2.00	2.00	0.00
1,100.0	8.00	136.89	1,098.7	-20.4	19.1	-3.6	2.00	2.00	0.00
1,200.0	10.00	136.89	1,197.5	-31.8	29.7	-5.6	2.00	2.00	0.00
1,300.0	12.00	136.89	1,295.6	-45.7	42.8	-8.0	2.00	2.00	0.00
1,400.0	14.00	136.89	1,393.1	-62.1	58.2	-10.9	2.00	2.00	0.00
1,500.0	16.00	136.89	1,489.6	-81.0	75.8	-14.2	2.00	2.00	0.00
1,600.0	18.00	136.89	1,585.3	-102.4	95.8	-17.9	2.00	2.00	0.00
1,700.0	20.00	136.89	1,679.8	-126.1	118.1	-22.1	2.00	2.00	0.00
1,800.0	22.00	136.89	1,773.2	-152.3	142.6	-26.7	2.00	2.00	0.00
1,900.0	24.00	136.89	1,865.2	-180.8	169.3	-31.7	2.00	2.00	0.00
2,000.0	26.00	136.89	1,955.8	-211.7	198.2	-37.1	2.00	2.00	0.00
2,066.7	27.33	136.89	2,015.4	-233.5	218.6	-40.9	2.00	2.00	0.00
2,100.0	27.33	136.89	2,045.0	-244.7	229.1	-42.9	0.00	0.00	0.00
2,200.0	27.33	136.89	2,133.9	-278.2	260.4	-48.8	0.00	0.00	0.00
2,300.0	27.33	136.89	2,222.7	-311.7	291.8	-54.7	0.00	0.00	0.00
2,400.0	27.33	136.89	2,311.5	-345.2	323.2	-60.5	0.00	0.00	0.00
2,500.0	27.33	136.89	2,400.4	-378.7	354.6	-66.4	0.00	0.00	0.00
2,600.0	27.33	136.89	2,489.2	-412.3	386.0	-72.3	0.00	0.00	0.00
2,700.0	27.33	136.89	2,578.0	-445.8	417.4	-78.2	0.00	0.00	0.00
2,800.0	27.33	136.89	2,666.9	-479.3	448.7	-84.1	0.00	0.00	0.00
2,900.0	27.33	136.89	2,755.7	-512.8	480.1	-89.9	0.00	0.00	0.00
3,000.0	27.33	136.89	2,844.5	-546.3	511.5	-95.8	0.00	0.00	0.00
3,100.0	27.33	136.89	2,933.4	-579.9	542.9	-101.7	0.00	0.00	0.00
3,200.0	27.33	136.89	3,022.2	-613.4	574.3	-107.6	0.00	0.00	0.00
3,300.0	27.33	136.89	3,111.0	-646.9	605.6	-113.4	0.00	0.00	0.00
3,400.0	27.33	136.89	3,199.9	-680.4	637.0	-119.3	0.00	0.00	0.00
3,500.0	27.33	136.89	3,288.7	-713.9	668.4	-125.2	0.00	0.00	0.00
3,600.0	27.33	136.89	3,377.6	-747.4	699.8	-131.1	0.00	0.00	0.00
3,700.0	27.33	136.89	3,466.4	-781.0	731.2	-137.0	0.00	0.00	0.00
3,800.0	27.33	136.89	3,555.2	-814.5	762.5	-142.8	0.00	0.00	0.00
3,900.0	27.33	136.89	3,644.1	-848.0	793.9	-148.7	0.00	0.00	0.00
4,000.0	27.33	136.89	3,732.9	-881.5	825.3	-154.6	0.00	0.00	0.00
4,100.0	27.33	136.89	3,821.7	-915.0	856.7	-160.5	0.00	0.00	0.00
4,200.0	27.33	136.89	3,910.6	-948.6	888.1	-166.3	0.00	0.00	0.00
4,300.0	27.33	136.89	3,999.4	-982.1	919.5	-172.2	0.00	0.00	0.00
4,400.0	27.33	136.89	4,088.2	-1,015.6	950.8	-178.1	0.00	0.00	0.00
4,500.0	27.33	136.89	4,177.1	-1,049.1	982.2	-184.0	0.00	0.00	0.00
4,600.0	27.33	136.89	4,265.9	-1,082.6	1,013.6	-189.9	0.00	0.00	0.00
4,700.0	27.33	136.89	4,354.7	-1,116.2	1,045.0	-195.7	0.00	0.00	0.00
4,800.0	27.33	136.89	4,443.6	-1,149.7	1,076.4	-201.6	0.00	0.00	0.00
4,900.0	27.33	136.89	4,532.4	-1,183.2	1,107.7	-207.5	0.00	0.00	0.00
5,000.0	27.33	136.89	4,621.2	-1,216.7	1,139.1	-213.4	0.00	0.00	0.00
5,100.0	27.33	136.89	4,710.1	-1,250.2	1,170.5	-219.3	0.00	0.00	0.00

<b>Database:</b>	Landmark	<b>Local Co-ordinate Reference:</b>	Well SRC Weis 12-9NHZ
<b>Company:</b>	Synergy Resources	<b>TVD Reference:</b>	WELL @ 5077.0ft (Original Well Elev)
<b>Project:</b>	SEC.4-T4N-R68W	<b>MD Reference:</b>	WELL @ 5077.0ft (Original Well Elev)
<b>Site:</b>	SRC Kiehn Pad Sec.4-T4N-R68W	<b>North Reference:</b>	True
<b>Well:</b>	SRC Weis 12-9NHZ	<b>Survey Calculation Method:</b>	Minimum Curvature
<b>Wellbore:</b>	Wellbore #1		
<b>Design:</b>	Plan #1 (10-2-14)		

Planned Survey									
Measured Depth (ft)	Inclination (°)	Azimuth (°)	Vertical Depth (ft)	+N/-S (ft)	+E/-W (ft)	Vertical Section (ft)	Dogleg Rate (°/100ft)	Build Rate (°/100ft)	Turn Rate (°/100ft)
5,200.0	27.33	136.89	4,798.9	-1,283.8	1,201.9	-225.1	0.00	0.00	0.00
5,300.0	27.33	136.89	4,887.8	-1,317.3	1,233.3	-231.0	0.00	0.00	0.00
5,400.0	27.33	136.89	4,976.6	-1,350.8	1,264.7	-236.9	0.00	0.00	0.00
5,500.0	27.33	136.89	5,065.4	-1,384.3	1,296.0	-242.8	0.00	0.00	0.00
5,600.0	27.33	136.89	5,154.3	-1,417.8	1,327.4	-248.6	0.00	0.00	0.00
5,700.0	27.33	136.89	5,243.1	-1,451.3	1,358.8	-254.5	0.00	0.00	0.00
5,800.0	27.33	136.89	5,331.9	-1,484.9	1,390.2	-260.4	0.00	0.00	0.00
5,900.0	27.33	136.89	5,420.8	-1,518.4	1,421.6	-266.3	0.00	0.00	0.00
6,000.0	27.33	136.89	5,509.6	-1,551.9	1,452.9	-272.2	0.00	0.00	0.00
6,100.0	27.33	136.89	5,598.4	-1,585.4	1,484.3	-278.0	0.00	0.00	0.00
6,200.0	27.33	136.89	5,687.3	-1,618.9	1,515.7	-283.9	0.00	0.00	0.00
6,300.0	27.33	136.89	5,776.1	-1,652.5	1,547.1	-289.8	0.00	0.00	0.00
6,400.0	27.33	136.89	5,864.9	-1,686.0	1,578.5	-295.7	0.00	0.00	0.00
6,500.0	27.33	136.89	5,953.8	-1,719.5	1,609.8	-301.5	0.00	0.00	0.00
6,600.0	27.33	136.89	6,042.6	-1,753.0	1,641.2	-307.4	0.00	0.00	0.00
6,700.0	27.33	136.89	6,131.4	-1,786.5	1,672.6	-313.3	0.00	0.00	0.00
6,742.1	27.33	136.89	6,168.8	-1,800.6	1,685.8	-315.8	0.00	0.00	0.00
Start DLS 8.00 TFO 129.03									
6,800.0	24.66	145.54	6,220.9	-1,820.3	1,701.7	-317.2	8.01	-4.62	14.95
6,900.0	21.55	164.44	6,313.0	-1,855.3	1,718.5	-310.4	8.00	-3.11	18.90
7,000.0	21.05	186.54	6,406.3	-1,890.9	1,721.4	-291.9	8.00	-0.50	22.10
7,100.0	23.33	206.97	6,499.0	-1,926.4	1,710.4	-262.2	8.00	2.27	20.43
7,200.0	27.70	222.61	6,589.4	-1,961.2	1,685.6	-221.8	8.00	4.37	15.65
7,300.0	33.35	233.81	6,675.5	-1,994.6	1,647.6	-171.4	8.00	5.65	11.20
7,400.0	39.74	241.93	6,755.9	-2,025.9	1,597.1	-112.2	8.00	6.39	8.12
7,500.0	46.56	248.07	6,828.8	-2,054.6	1,535.2	-45.1	8.00	6.82	6.14
7,600.0	53.64	252.94	6,893.0	-2,080.0	1,462.9	28.4	8.00	7.08	4.87
7,700.0	60.88	256.99	6,947.0	-2,101.6	1,381.7	106.9	8.00	7.24	4.05
7,800.0	68.23	260.50	6,990.0	-2,119.2	1,293.2	189.0	8.00	7.35	3.51
7,900.0	75.64	263.66	7,021.0	-2,132.2	1,199.1	272.9	8.00	7.41	3.16
8,000.0	83.09	266.62	7,039.4	-2,140.5	1,101.3	357.2	8.00	7.45	2.96
8,092.4	90.00	269.27	7,045.0	-2,143.8	1,009.1	433.9	8.00	7.47	2.87
7"									
8,100.0	90.00	269.27	7,045.0	-2,143.9	1,001.5	440.1	0.04	0.04	0.02
8,200.0	90.00	269.27	7,045.0	-2,145.2	901.6	522.0	0.00	0.00	0.00
8,300.0	90.00	269.27	7,045.0	-2,146.4	801.6	603.9	0.00	0.00	0.00
8,400.0	90.00	269.27	7,045.0	-2,147.7	701.6	685.7	0.00	0.00	0.00
8,500.0	90.00	269.27	7,045.0	-2,149.0	601.6	767.6	0.00	0.00	0.00
8,600.0	90.00	269.27	7,045.0	-2,150.3	501.6	849.5	0.00	0.00	0.00
8,700.0	90.00	269.27	7,045.0	-2,151.5	401.6	931.4	0.00	0.00	0.00
8,800.0	90.00	269.27	7,045.0	-2,152.8	301.6	1,013.3	0.00	0.00	0.00
8,900.0	90.00	269.27	7,045.0	-2,154.1	201.6	1,095.2	0.00	0.00	0.00
9,000.0	90.00	269.27	7,045.0	-2,155.4	101.6	1,177.1	0.00	0.00	0.00
9,100.0	90.00	269.27	7,045.0	-2,156.6	1.6	1,259.0	0.00	0.00	0.00
9,200.0	90.00	269.27	7,045.0	-2,157.9	-98.4	1,340.8	0.00	0.00	0.00
9,300.0	90.00	269.27	7,045.0	-2,159.2	-198.4	1,422.7	0.00	0.00	0.00
9,400.0	90.00	269.27	7,045.0	-2,160.5	-298.4	1,504.6	0.00	0.00	0.00
9,500.0	90.00	269.27	7,045.0	-2,161.7	-398.3	1,586.5	0.00	0.00	0.00
9,600.0	90.00	269.27	7,045.0	-2,163.0	-498.3	1,668.4	0.00	0.00	0.00
9,700.0	90.00	269.27	7,045.0	-2,164.3	-598.3	1,750.3	0.00	0.00	0.00
9,800.0	90.00	269.27	7,045.0	-2,165.6	-698.3	1,832.2	0.00	0.00	0.00
9,900.0	90.00	269.27	7,045.0	-2,166.8	-798.3	1,914.0	0.00	0.00	0.00
10,000.0	90.00	269.27	7,045.0	-2,168.1	-898.3	1,995.9	0.00	0.00	0.00
10,100.0	90.00	269.27	7,045.0	-2,169.4	-998.3	2,077.8	0.00	0.00	0.00

<b>Database:</b>	Landmark	<b>Local Co-ordinate Reference:</b>	Well SRC Weis 12-9NHZ
<b>Company:</b>	Synergy Resources	<b>TVD Reference:</b>	WELL @ 5077.0ft (Original Well Elev)
<b>Project:</b>	SEC.4-T4N-R68W	<b>MD Reference:</b>	WELL @ 5077.0ft (Original Well Elev)
<b>Site:</b>	SRC Kiehn Pad Sec.4-T4N-R68W	<b>North Reference:</b>	True
<b>Well:</b>	SRC Weis 12-9NHZ	<b>Survey Calculation Method:</b>	Minimum Curvature
<b>Wellbore:</b>	Wellbore #1		
<b>Design:</b>	Plan #1 (10-2-14)		

Planned Survey									
Measured Depth (ft)	Inclination (°)	Azimuth (°)	Vertical Depth (ft)	+N/-S (ft)	+E/-W (ft)	Vertical Section (ft)	Dogleg Rate (°/100ft)	Build Rate (°/100ft)	Turn Rate (°/100ft)
10,200.0	90.00	269.27	7,045.0	-2,170.7	-1,098.3	2,159.7	0.00	0.00	0.00
10,300.0	90.00	269.27	7,045.0	-2,171.9	-1,198.3	2,241.6	0.00	0.00	0.00
10,400.0	90.00	269.27	7,045.0	-2,173.2	-1,298.3	2,323.5	0.00	0.00	0.00
10,500.0	90.00	269.27	7,045.0	-2,174.5	-1,398.3	2,405.4	0.00	0.00	0.00
10,600.0	90.00	269.27	7,045.0	-2,175.7	-1,498.3	2,487.3	0.00	0.00	0.00
10,700.0	90.00	269.27	7,045.0	-2,177.0	-1,598.2	2,569.1	0.00	0.00	0.00
10,800.0	90.00	269.27	7,045.0	-2,178.3	-1,698.2	2,651.0	0.00	0.00	0.00
10,900.0	90.00	269.27	7,045.0	-2,179.6	-1,798.2	2,732.9	0.00	0.00	0.00
11,000.0	90.00	269.27	7,045.0	-2,180.8	-1,898.2	2,814.8	0.00	0.00	0.00
11,100.0	90.00	269.27	7,045.0	-2,182.1	-1,998.2	2,896.7	0.00	0.00	0.00
11,200.0	90.00	269.27	7,045.0	-2,183.4	-2,098.2	2,978.6	0.00	0.00	0.00
11,300.0	90.00	269.27	7,045.0	-2,184.7	-2,198.2	3,060.5	0.00	0.00	0.00
11,400.0	90.00	269.27	7,045.0	-2,185.9	-2,298.2	3,142.3	0.00	0.00	0.00
11,500.0	90.00	269.27	7,045.0	-2,187.2	-2,398.2	3,224.2	0.00	0.00	0.00
11,600.0	90.00	269.27	7,045.0	-2,188.5	-2,498.2	3,306.1	0.00	0.00	0.00
11,700.0	90.00	269.27	7,045.0	-2,189.8	-2,598.2	3,388.0	0.00	0.00	0.00
11,800.0	90.00	269.27	7,045.0	-2,191.0	-2,698.2	3,469.9	0.00	0.00	0.00
11,900.0	90.00	269.27	7,045.0	-2,192.3	-2,798.1	3,551.8	0.00	0.00	0.00
12,000.0	90.00	269.27	7,045.0	-2,193.6	-2,898.1	3,633.7	0.00	0.00	0.00
12,100.0	90.00	269.27	7,045.0	-2,194.9	-2,998.1	3,715.6	0.00	0.00	0.00
12,150.7	90.00	269.27	7,045.0	-2,195.5	-3,048.8	3,757.0	0.00	0.00	0.00

Targets									
Target Name	Dip Angle (°)	Dip Dir. (°)	TVD (ft)	+N/-S (ft)	+E/-W (ft)	Northing (ft)	Easting (ft)	Latitude	Longitude
- hit/miss target									
- Shape									
SHL 171'FSL & 1764'I	0.00	0.00	1.0	0.0	0.0	1,365,530.53	3,137,929.06	40.335726	-105.005228
- plan hits target center									
- Point									
BHL 1970'FNL & 460'	0.00	0.00	7,045.0	-2,195.5	-3,048.8	1,363,318.16	3,134,892.68	40.329699	-105.016163
- plan hits target center									
- Point									

Casing Points				
Measured Depth (ft)	Vertical Depth (ft)	Name	Casing Diameter (")	Hole Diameter (")
8,092.4	7,045.0	7"	7	7-1/2

Plan Annotations				
Measured Depth (ft)	Vertical Depth (ft)	+N/-S (ft)	+E/-W (ft)	Comment
700.0	700.0	0.0	0.0	KOP - Start Build 2.00
6,742.1	6,168.8	-233.5	218.6	Start DLS 8.00 TFO 129.03
12,150.7	7,045.0	-1,800.6	1,685.8	TD at 12150.7



# **Synergy Resources**

**SEC.4-T4N-R68W**

**SRC Kiehn Pad Sec.4-T4N-R68W**

**SRC Weis 12-9NHZ**

**Wellbore #1**

**Plan #1 (10-2-14)**

## **Anticollision Report**

**03 October, 2014**





<b>Company:</b>	Synergy Resources	<b>Local Co-ordinate Reference:</b>	Well SRC Weis 12-9NHZ
<b>Project:</b>	SEC.4-T4N-R68W	<b>TVD Reference:</b>	WELL @ 5077.0ft (Original Well Elev)
<b>Reference Site:</b>	SRC Kiehn Pad Sec.4-T4N-R68W	<b>MD Reference:</b>	WELL @ 5077.0ft (Original Well Elev)
<b>Site Error:</b>	0.0ft	<b>North Reference:</b>	True
<b>Reference Well:</b>	SRC Weis 12-9NHZ	<b>Survey Calculation Method:</b>	Minimum Curvature
<b>Well Error:</b>	0.0ft	<b>Output errors are at</b>	2.00 sigma
<b>Reference Wellbore</b>	Wellbore #1	<b>Database:</b>	Landmark
<b>Reference Design:</b>	Plan #1 (10-2-14)	<b>Offset TVD Reference:</b>	Offset Datum

<b>Offset Design</b> SRC Kiehn Pad Sec.4-T4N-R68W - SRC Kiehn 22-4NHZ - Wellbore #1 - Plan #2 (4-25-14)												<b>Offset Site Error:</b>	0.0 ft
Survey Program: 0-MWD												<b>Offset Well Error:</b>	0.0 ft
Reference		Offset		Semi Major Axis			Distance						
Measured Depth (ft)	Vertical Depth (ft)	Measured Depth (ft)	Vertical Depth (ft)	Reference (ft)	Offset (ft)	Highside Toolface (°)	Offset Wellbore Centre +N/-S (ft)	+E/-W (ft)	Between Centres (ft)	Between Ellipses (ft)	Minimum Separation (ft)	Separation Factor	Warning
200.0	200.0	200.0	200.0	0.3	0.3	-78.02	28.1	-132.1	135.1	134.4	0.67	200.341	
300.0	300.0	300.0	300.0	0.6	0.6	-78.02	28.1	-132.1	135.1	134.0	1.12	120.204	
400.0	400.0	400.0	400.0	0.8	0.8	-78.02	28.1	-132.1	135.1	133.5	1.57	85.860	
500.0	500.0	500.0	500.0	1.0	1.0	-78.02	28.1	-132.1	135.1	133.1	2.02	66.780	
600.0	600.0	600.0	600.0	1.2	1.2	-78.02	28.1	-132.1	135.1	132.6	2.47	54.638	
700.0	700.0	700.0	700.0	1.5	1.5	-78.02	28.1	-132.1	135.1	132.2	2.92	46.232 CC, ES	
800.0	800.0	800.0	800.0	1.7	1.7	145.50	28.1	-132.1	136.5	133.2	3.35	40.782	
900.0	899.8	899.8	899.8	1.9	1.9	146.66	28.1	-132.1	140.9	137.1	3.76	37.490	
1,000.0	999.5	999.5	999.5	2.1	2.1	148.43	28.1	-132.1	148.2	144.1	4.18	35.490	
1,100.0	1,098.7	1,094.0	1,093.9	2.3	2.3	150.27	27.9	-133.7	160.2	155.6	4.58	34.957 SF	
1,200.0	1,197.5	1,187.2	1,187.1	2.6	2.5	151.84	27.3	-138.2	178.3	173.3	5.00	35.701	
1,300.0	1,295.6	1,278.7	1,278.3	2.9	2.7	153.06	26.3	-145.6	202.4	197.0	5.42	37.334	
1,400.0	1,393.1	1,368.1	1,367.1	3.3	2.9	153.92	25.0	-155.6	232.2	226.4	5.86	39.609	
1,500.0	1,489.6	1,455.0	1,453.1	3.8	3.2	154.49	23.4	-167.9	267.7	261.3	6.32	42.331	
1,600.0	1,585.3	1,539.0	1,535.8	4.3	3.4	154.79	21.5	-182.3	308.4	301.6	6.80	45.341	
1,700.0	1,679.8	1,619.8	1,615.0	4.9	3.7	154.90	19.4	-198.4	354.3	347.0	7.30	48.514	
1,800.0	1,773.2	1,700.0	1,693.1	5.5	4.0	154.87	17.0	-216.5	405.0	397.2	7.83	51.708	
1,900.0	1,865.2	1,773.8	1,764.5	6.3	4.3	154.69	14.6	-235.1	460.2	451.8	8.38	54.890	
2,000.0	1,955.8	1,855.0	1,842.9	7.1	4.6	154.58	11.9	-255.9	518.6	509.6	8.96	57.850	
2,100.0	2,045.0	1,934.3	1,919.5	8.0	5.0	154.73	9.2	-276.3	579.3	569.7	9.59	60.427	
2,200.0	2,133.9	2,013.2	1,995.7	8.9	5.4	155.23	6.6	-296.5	640.6	630.4	10.24	62.565	
2,300.0	2,222.7	2,092.0	2,071.8	9.8	5.8	155.64	3.9	-316.8	702.0	691.1	10.91	64.339	
2,400.0	2,311.5	2,170.9	2,148.0	10.8	6.2	155.99	1.3	-337.0	763.4	751.8	11.59	65.841	
2,500.0	2,400.4	2,249.8	2,224.2	11.7	6.6	156.29	-1.4	-357.3	824.8	812.5	12.29	67.126	
2,600.0	2,489.2	2,328.6	2,300.4	12.7	7.0	156.55	-4.0	-377.6	886.2	873.2	12.99	68.235	
2,700.0	2,578.0	2,407.5	2,376.5	13.6	7.4	156.77	-6.7	-397.8	947.6	933.9	13.69	69.196	

<b>Company:</b>	Synergy Resources	<b>Local Co-ordinate Reference:</b>	Well SRC Weis 12-9NHZ
<b>Project:</b>	SEC.4-T4N-R68W	<b>TVD Reference:</b>	WELL @ 5077.0ft (Original Well Elev)
<b>Reference Site:</b>	SRC Kiehn Pad Sec.4-T4N-R68W	<b>MD Reference:</b>	WELL @ 5077.0ft (Original Well Elev)
<b>Site Error:</b>	0.0ft	<b>North Reference:</b>	True
<b>Reference Well:</b>	SRC Weis 12-9NHZ	<b>Survey Calculation Method:</b>	Minimum Curvature
<b>Well Error:</b>	0.0ft	<b>Output errors are at</b>	2.00 sigma
<b>Reference Wellbore</b>	Wellbore #1	<b>Database:</b>	Landmark
<b>Reference Design:</b>	Plan #1 (10-2-14)	<b>Offset TVD Reference:</b>	Offset Datum

<b>Offset Design</b>												<b>Offset Site Error:</b>	0.0 ft
Survey Program: 67-MWD												<b>Offset Well Error:</b>	0.0 ft
Reference		Offset		Semi Major Axis			Distance						
Measured Depth (ft)	Vertical Depth (ft)	Measured Depth (ft)	Vertical Depth (ft)	Reference (ft)	Offset (ft)	Highside Toolface (°)	Offset Wellbore Centre +N/-S (ft)	+E/-W (ft)	Between Centres (ft)	Between Ellipses (ft)	Minimum Separation (ft)	Separation Factor	Warning
0.0	0.0	0.5	0.5	0.0	0.0	-65.75	29.1	-64.7	70.9	70.9	0.00	N/A	
100.0	100.0	100.3	100.2	0.1	0.1	-66.64	28.2	-65.3	71.2	70.9	0.26	275.910	
200.0	200.0	200.2	200.2	0.3	0.4	-67.61	27.2	-66.1	71.5	70.8	0.69	103.595	
300.0	300.0	300.0	300.0	0.6	0.6	-67.95	27.1	-66.9	72.2	71.0	1.13	64.129	
400.0	400.0	400.8	400.7	0.8	0.8	-68.70	26.4	-67.6	72.6	71.0	1.56	46.532	
500.0	500.0	501.9	501.8	1.0	1.0	-68.72	25.9	-66.5	71.4	69.4	2.00	35.751	
600.0	600.0	602.1	602.0	1.2	1.2	-67.65	26.3	-63.9	69.1	66.6	2.43	28.404	
669.0	669.0	669.6	669.5	1.4	1.3	-66.92	26.7	-62.6	68.0	65.3	2.73	24.957	CC, ES
700.0	700.0	699.5	699.4	1.5	1.4	-66.74	27.0	-62.7	68.3	65.4	2.86	23.889	
800.0	800.0	800.0	799.9	1.7	1.6	156.47	27.2	-64.8	71.9	68.6	3.27	21.973	
900.0	899.8	901.4	901.3	1.9	1.8	156.55	25.3	-65.3	76.4	72.7	3.67	20.825	
1,000.0	999.5	1,000.6	1,000.4	2.1	2.0	158.33	24.2	-64.6	83.4	79.3	4.07	20.486	SF
1,100.0	1,098.7	1,098.3	1,098.2	2.3	2.2	160.92	24.3	-64.9	95.1	90.6	4.48	21.234	
1,200.0	1,197.5	1,197.2	1,197.0	2.6	2.4	163.82	25.3	-65.4	110.9	106.1	4.89	22.684	
1,300.0	1,295.6	1,291.9	1,291.7	2.9	2.6	166.52	27.4	-66.5	131.6	126.3	5.30	24.821	
1,400.0	1,393.1	1,389.2	1,389.0	3.3	2.8	168.14	28.7	-69.4	156.6	150.9	5.72	27.384	
1,500.0	1,489.6	1,485.1	1,484.8	3.8	3.0	169.31	29.4	-72.4	185.0	178.8	6.13	30.156	
1,600.0	1,585.3	1,583.6	1,583.3	4.3	3.3	170.49	30.0	-74.4	215.7	209.1	6.55	32.924	
1,700.0	1,679.8	1,676.8	1,676.5	4.9	3.5	171.72	30.8	-74.7	248.6	241.6	6.96	35.700	
1,800.0	1,773.2	1,757.0	1,756.6	5.5	3.6	172.35	32.2	-77.6	287.7	280.3	7.37	39.039	
1,900.0	1,865.2	1,840.0	1,839.4	6.3	3.8	172.59	34.1	-83.7	333.0	325.2	7.80	42.690	
2,000.0	1,955.8	1,940.5	1,939.5	7.1	4.0	172.31	33.3	-92.6	380.6	372.3	8.25	46.111	
2,100.0	2,045.0	2,026.7	2,025.0	8.0	4.2	171.49	28.2	-102.0	429.5	420.8	8.73	49.198	
2,200.0	2,133.9	2,116.6	2,113.9	8.9	4.5	170.60	21.1	-113.0	479.0	469.7	9.31	51.466	
2,300.0	2,222.7	2,205.2	2,201.5	9.8	4.7	169.84	13.4	-123.8	528.1	518.2	9.90	53.322	
2,400.0	2,311.5	2,284.5	2,279.8	10.8	4.9	169.26	6.6	-133.8	577.6	567.1	10.50	55.028	
2,500.0	2,400.4	2,361.1	2,355.6	11.7	5.1	168.87	1.5	-143.8	628.5	617.4	11.09	56.669	
2,600.0	2,489.2	2,441.0	2,434.7	12.7	5.3	168.65	-2.2	-154.4	680.6	668.9	11.68	58.249	
2,700.0	2,578.0	2,526.1	2,519.0	13.6	5.5	168.49	-5.5	-165.6	732.9	720.6	12.29	59.622	
2,800.0	2,666.9	2,610.6	2,602.7	14.6	5.8	168.34	-9.1	-176.7	785.2	772.3	12.91	60.837	
2,900.0	2,755.7	2,691.9	2,683.1	15.6	6.0	168.14	-12.9	-188.2	837.8	824.3	13.52	61.951	
3,000.0	2,844.5	2,777.0	2,767.4	16.5	6.3	168.04	-16.0	-199.7	890.5	876.4	14.15	62.950	
3,100.0	2,933.4	2,854.5	2,844.1	17.5	6.5	168.00	-18.2	-210.1	943.6	928.9	14.75	63.990	
3,200.0	3,022.2	2,943.0	2,931.9	18.5	6.7	168.00	-20.4	-221.3	996.4	981.0	15.37	64.845	

<b>Company:</b>	Synergy Resources	<b>Local Co-ordinate Reference:</b>	Well SRC Weis 12-9NHZ
<b>Project:</b>	SEC.4-T4N-R68W	<b>TVD Reference:</b>	WELL @ 5077.0ft (Original Well Elev)
<b>Reference Site:</b>	SRC Kiehn Pad Sec.4-T4N-R68W	<b>MD Reference:</b>	WELL @ 5077.0ft (Original Well Elev)
<b>Site Error:</b>	0.0ft	<b>North Reference:</b>	True
<b>Reference Well:</b>	SRC Weis 12-9NHZ	<b>Survey Calculation Method:</b>	Minimum Curvature
<b>Well Error:</b>	0.0ft	<b>Output errors are at</b>	2.00 sigma
<b>Reference Wellbore</b>	Wellbore #1	<b>Database:</b>	Landmark
<b>Reference Design:</b>	Plan #1 (10-2-14)	<b>Offset TVD Reference:</b>	Offset Datum

<b>Offset Design</b>												<b>Offset Site Error:</b>	0.0 ft
Survey Program: 161-MWD												<b>Offset Well Error:</b>	0.0 ft
Reference		Offset		Semi Major Axis			Distance						
Measured Depth (ft)	Vertical Depth (ft)	Measured Depth (ft)	Vertical Depth (ft)	Reference (ft)	Offset (ft)	Highside Toolface (°)	Offset Wellbore Centre +N/-S (ft)	+E/-W (ft)	Between Centres (ft)	Between Ellipses (ft)	Minimum Separation (ft)	Separation Factor	Warning
0.0	0.0	0.0	0.0	0.0	0.0	-55.15	29.5	-42.4	51.6				
100.0	100.0	99.7	99.7	0.1	0.1	-55.49	29.7	-43.2	52.4	52.2	0.23	230.439	
200.0	200.0	199.5	199.5	0.3	0.3	-56.31	30.3	-45.4	54.6	54.0	0.60	90.755	
300.0	300.0	300.0	299.9	0.6	0.5	-56.14	31.0	-46.3	55.7	54.7	1.03	53.971	
400.0	400.0	399.1	398.9	0.8	0.7	-53.03	34.5	-45.8	57.4	55.9	1.47	39.004	
500.0	500.0	497.8	497.5	1.0	0.9	-48.42	40.6	-45.8	61.3	59.3	1.92	31.892	
600.0	600.0	596.9	596.3	1.2	1.2	-43.78	48.2	-46.2	66.9	64.5	2.37	28.209	
700.0	700.0	696.9	696.0	1.5	1.4	-40.37	55.8	-47.5	73.4	70.6	2.81	26.097	
800.0	800.0	798.2	797.1	1.7	1.6	-178.01	59.2	-51.7	80.4	77.2	3.23	24.935	
900.0	899.8	900.5	899.3	1.9	1.8	179.11	58.5	-56.7	88.5	84.9	3.61	24.521	
1,000.0	999.5	1,002.5	1,001.3	2.1	2.0	178.53	57.6	-57.3	97.0	93.0	3.99	24.271 SF	
1,100.0	1,098.7	1,100.1	1,098.9	2.3	2.2	178.71	57.1	-56.8	108.4	104.0	4.39	24.700	
1,200.0	1,197.5	1,196.0	1,194.8	2.6	2.4	178.26	57.3	-58.7	125.6	120.8	4.80	26.176	
1,300.0	1,295.6	1,293.2	1,291.9	2.9	2.6	178.04	58.5	-61.5	147.5	142.3	5.21	28.319	
1,400.0	1,393.1	1,392.3	1,391.0	3.3	2.8	178.20	59.8	-63.1	172.0	166.4	5.61	30.638	
1,500.0	1,489.6	1,486.7	1,485.4	3.8	3.0	177.94	60.0	-65.6	199.8	193.8	6.01	33.214	
1,600.0	1,585.3	1,581.3	1,579.9	4.3	3.2	177.71	60.4	-68.5	231.4	224.9	6.43	36.004	
1,700.0	1,679.8	1,676.3	1,674.9	4.9	3.4	177.60	60.9	-71.2	266.1	259.3	6.84	38.923	
1,800.0	1,773.2	1,772.0	1,770.5	5.5	3.6	177.78	61.5	-72.5	303.3	296.0	7.25	41.830	
1,900.0	1,865.2	1,865.2	1,863.7	6.3	3.8	177.81	61.4	-73.9	343.2	335.6	7.66	44.787	
2,000.0	1,955.8	1,959.9	1,958.4	7.1	4.0	177.61	59.4	-75.5	385.2	377.1	8.09	47.639	
2,100.0	2,045.0	2,048.6	2,046.9	8.0	4.2	177.04	55.6	-79.1	430.2	421.7	8.54	50.387	
2,200.0	2,133.9	2,143.9	2,141.9	8.9	4.4	176.25	49.0	-83.9	475.0	466.0	9.08	52.344	
2,300.0	2,222.7	2,232.3	2,230.0	9.8	4.6	175.61	42.4	-88.4	519.6	510.0	9.61	54.060	
2,400.0	2,311.5	2,317.6	2,314.9	10.8	4.8	175.11	36.3	-92.7	564.4	554.3	10.15	55.583	
2,500.0	2,400.4	2,395.0	2,392.0	11.7	4.9	174.73	31.7	-97.5	610.7	600.0	10.70	57.096	
2,600.0	2,489.2	2,470.6	2,467.3	12.7	5.1	174.40	28.1	-103.2	658.6	647.3	11.24	58.571	
2,700.0	2,578.0	2,550.8	2,547.1	13.6	5.3	174.04	24.8	-110.5	707.9	696.0	11.81	59.931	
2,800.0	2,666.9	2,637.5	2,633.3	14.6	5.5	173.66	21.1	-119.1	757.6	745.2	12.40	61.119	
2,900.0	2,755.7	2,721.3	2,716.6	15.6	5.7	173.31	17.2	-127.6	807.3	794.3	12.98	62.198	
3,000.0	2,844.5	2,811.6	2,806.2	16.5	6.0	172.93	12.8	-137.4	857.4	843.8	13.59	63.104	
3,100.0	2,933.4	2,906.2	2,900.2	17.5	6.2	172.55	7.1	-147.1	906.5	892.3	14.21	63.801	
3,200.0	3,022.2	2,995.4	2,988.7	18.5	6.4	172.24	1.7	-155.9	955.3	940.5	14.82	64.472	

Offset Design      SRC Kiehn Pad Sec.4-T4N-R68W - SRC Kiehn 32-4CHZ - Wellbore #1 - Wellbore #1													Offset Site Error:      0.0 ft	
Survey Program: 72-MWD													Offset Well Error:      0.0 ft	
Reference		Offset		Semi Major Axis			Distance						Warning	
Measured Depth (ft)	Vertical Depth (ft)	Measured Depth (ft)	Vertical Depth (ft)	Reference (ft)	Offset (ft)	Highside Toolface (°)	Offset Wellbore Centre +N/-S (ft)	+E/-W (ft)	Between Centres (ft)	Between Ellipses (ft)	Minimum Separation (ft)	Separation Factor		
0.0	0.0	0.5	0.5	0.0	0.0	-33.54	29.9	-19.8	35.8	35.8	0.00	N/A CC, ES		
100.0	100.0	100.2	100.2	0.1	0.1	-33.70	30.2	-20.1	36.3	36.1	0.26	142.062		
200.0	200.0	199.9	199.9	0.3	0.4	-36.71	30.2	-22.5	37.7	36.9	0.70	53.565		
300.0	300.0	299.5	299.4	0.6	0.6	-43.17	29.0	-27.2	39.8	38.7	1.16	34.247		
400.0	400.0	398.9	398.4	0.8	0.9	-52.56	26.5	-34.7	43.7	42.1	1.64	26.590		
500.0	500.0	498.4	497.5	1.0	1.1	-62.61	22.6	-43.7	49.3	47.2	2.14	23.056		
600.0	600.0	597.9	596.3	1.2	1.4	-71.68	17.5	-53.0	55.9	53.3	2.65	21.141		
700.0	700.0	695.7	693.4	1.5	1.7	-79.25	12.0	-63.4	64.9	61.8	3.15	20.578 SF		
800.0	800.0	793.3	790.3	1.7	2.0	141.21	9.9	-75.8	78.4	75.0	3.46	22.684		
900.0	899.8	892.6	888.7	1.9	2.2	143.55	12.6	-88.3	95.4	91.6	3.86	24.753		
1,000.0	999.5	991.8	987.2	2.1	2.5	146.39	15.6	-99.5	114.3	110.0	4.27	26.789		
1,100.0	1,098.7	1,092.4	1,087.1	2.3	2.8	146.74	12.7	-110.8	134.5	129.8	4.70	28.641		
1,200.0	1,197.5	1,193.1	1,187.1	2.6	3.1	146.63	6.6	-120.6	155.5	150.4	5.15	30.195		
1,300.0	1,295.6	1,294.6	1,287.9	2.9	3.4	146.28	-2.7	-129.0	177.2	171.6	5.64	31.424		
1,400.0	1,393.1	1,395.6	1,388.3	3.3	3.6	146.82	-11.4	-135.1	199.9	193.7	6.14	32.560		
1,500.0	1,489.6	1,497.1	1,489.5	3.8	3.8	148.19	-19.2	-138.3	222.9	216.2	6.64	33.559		
1,600.0	1,585.3	1,590.9	1,583.1	4.3	4.0	149.91	-24.9	-140.9	249.1	241.9	7.14	34.866		
1,700.0	1,679.8	1,686.7	1,678.6	4.9	4.2	151.55	-31.0	-143.8	278.6	271.0	7.67	36.345		
1,800.0	1,773.2	1,778.5	1,770.2	5.5	4.5	153.16	-36.3	-146.4	311.4	303.2	8.19	38.047		
1,900.0	1,865.2	1,870.0	1,861.5	6.3	4.7	154.53	-41.8	-150.5	348.7	340.0	8.71	40.012		
2,000.0	1,955.8	1,968.7	1,959.8	7.1	4.9	155.82	-49.1	-153.4	387.3	378.0	9.26	41.809		
2,100.0	2,045.0	2,056.6	2,047.5	8.0	5.1	157.02	-55.3	-155.7	428.9	419.1	9.82	43.695		
2,200.0	2,133.9	2,145.2	2,135.8	8.9	5.3	158.32	-61.1	-158.3	471.6	461.2	10.41	45.285		
2,300.0	2,222.7	2,232.8	2,223.3	9.8	5.5	159.38	-66.8	-161.1	514.9	503.9	11.02	46.738		
2,400.0	2,311.5	2,319.5	2,309.7	10.8	5.7	160.28	-72.1	-164.2	558.7	547.1	11.62	48.081		
2,500.0	2,400.4	2,402.6	2,392.7	11.7	5.9	161.09	-76.3	-167.5	603.4	591.2	12.21	49.430		
2,600.0	2,489.2	2,500.5	2,490.3	12.7	6.1	161.84	-82.1	-171.5	647.9	635.1	12.82	50.520		
2,700.0	2,578.0	2,588.7	2,578.2	13.6	6.4	162.33	-88.5	-175.2	692.0	678.5	13.45	51.462		
2,800.0	2,666.9	2,670.0	2,659.2	14.6	6.6	162.72	-94.0	-179.4	736.9	722.8	14.06	52.401		
2,900.0	2,755.7	2,750.9	2,739.8	15.6	6.8	163.08	-98.9	-184.2	782.9	768.2	14.68	53.346		
3,000.0	2,844.5	2,859.1	2,847.6	16.5	7.1	163.49	-106.1	-190.0	828.1	812.8	15.33	54.010		
3,100.0	2,933.4	2,945.3	2,933.5	17.5	7.3	163.79	-112.3	-193.7	872.5	856.5	15.95	54.707		
3,200.0	3,022.2	3,032.0	3,019.9	18.5	7.5	164.08	-118.0	-197.6	917.1	900.5	16.57	55.354		
3,300.0	3,111.0	3,113.9	3,101.6	19.5	7.7	164.33	-123.3	-201.6	962.2	945.1	17.18	56.003		

Offset Design      SRC Kiehn Pad Sec.4-T4N-R68W - SRC Kiehn 32-4NHZ - Wellbore #1 - Wellbore #1													Offset Site Error:      0.0 ft	
Survey Program:    110-MWD													Offset Well Error:      0.0 ft	
Reference		Offset		Semi Major Axis			Distance							Warning
Measured Depth	Vertical Depth	Measured Depth	Vertical Depth	Reference	Offset	Highside Toolface	Offset Wellbore Centre		Between Centres	Between Ellipses	Minimum Separation	Separation Factor		
(ft)	(ft)	(ft)	(ft)	(ft)	(ft)	(°)	+N/-S (ft)	+E/-W (ft)	(ft)	(ft)	(ft)			
0.0	0.0	0.5	0.5	0.0	0.0	5.27	30.2	2.8	30.4	30.4	0.00	N/A		
100.0	100.0	100.7	100.7	0.1	0.1	3.75	29.9	2.0	30.0	29.7	0.23	131.847		
200.0	200.0	200.7	200.7	0.3	0.3	-0.24	29.2	-0.1	29.2	28.5	0.66	44.023		
300.0	300.0	300.6	300.6	0.6	0.5	-4.14	28.8	-2.1	28.9	27.8	1.09	26.500		
400.0	400.0	400.8	400.7	0.8	0.7	-7.58	28.0	-3.7	28.3	26.8	1.52	18.627		
500.0	500.0	500.9	500.9	1.0	0.9	-9.48	26.9	-4.5	27.3	25.3	1.95	13.970		
600.0	600.0	600.6	600.5	1.2	1.2	-12.94	25.7	-5.9	26.3	23.9	2.39	11.013		
700.0	700.0	701.1	701.0	1.5	1.4	-18.81	24.4	-8.3	25.8	22.9	2.83	9.102		
749.8	749.8	750.9	750.7	1.6	1.5	-158.13	23.1	-8.8	25.1	22.1	3.04	8.247 CC, ES		
800.0	800.0	800.6	800.4	1.7	1.6	-159.91	22.6	-9.0	26.0	22.7	3.25	8.004 SF		
900.0	899.8	900.0	899.8	1.9	1.8	-162.52	23.9	-9.2	32.1	28.5	3.64	8.829		
1,000.0	999.5	999.4	999.2	2.1	2.0	-166.05	25.4	-9.9	42.3	38.2	4.05	10.449		
1,100.0	1,098.7	1,098.7	1,098.5	2.3	2.2	-169.58	26.4	-11.1	55.7	51.2	4.45	12.495		
1,200.0	1,197.5	1,199.5	1,199.3	2.6	2.4	-173.77	24.8	-12.8	70.8	65.9	4.87	14.546		
1,300.0	1,295.6	1,296.7	1,296.5	2.9	2.6	-175.65	23.4	-12.9	88.7	83.4	5.27	16.840		
1,400.0	1,393.1	1,392.0	1,391.8	3.3	2.8	-175.92	24.5	-12.4	111.7	106.0	5.67	19.692		
1,500.0	1,489.6	1,486.0	1,485.7	3.8	3.0	-176.38	26.8	-13.6	140.1	134.1	6.09	23.031		
1,600.0	1,585.3	1,586.4	1,586.1	4.3	3.2	-176.92	27.9	-14.2	170.5	164.0	6.50	26.242		
1,700.0	1,679.8	1,681.7	1,681.4	4.9	3.4	-177.12	28.0	-13.1	202.4	195.5	6.90	29.323		
1,800.0	1,773.2	1,771.9	1,771.6	5.5	3.6	-177.25	29.0	-12.6	238.7	231.3	7.31	32.643		
1,900.0	1,865.2	1,865.5	1,865.1	6.3	3.8	-177.34	30.0	-11.9	277.9	270.2	7.73	35.950		
2,000.0	1,955.8	1,952.9	1,952.6	7.1	4.0	-177.37	31.4	-11.4	320.9	312.8	8.14	39.408		
2,100.0	2,045.0	2,044.9	2,044.6	8.0	4.2	-177.72	31.8	-12.1	366.9	358.3	8.60	42.684		
2,200.0	2,133.9	2,140.2	2,139.9	8.9	4.4	-177.96	31.4	-11.4	412.0	402.9	9.11	45.225		
2,300.0	2,222.7	2,226.8	2,226.5	9.8	4.6	-178.31	30.2	-11.8	457.2	447.6	9.62	47.533		
2,400.0	2,311.5	2,325.4	2,324.9	10.8	4.8	-178.77	27.1	-12.1	501.2	491.0	10.16	49.340		
2,500.0	2,400.4	2,406.5	2,406.0	11.7	4.9	-179.17	24.4	-13.1	545.7	535.0	10.67	51.127		
2,600.0	2,489.2	2,499.4	2,498.9	12.7	5.1	-179.53	21.7	-14.3	590.4	579.2	11.22	52.642		
2,700.0	2,578.0	2,590.5	2,589.9	13.6	5.3	-179.91	18.2	-15.8	634.8	623.1	11.76	53.993		
2,800.0	2,666.9	2,678.9	2,678.2	14.6	5.5	179.72	14.5	-17.6	679.2	666.9	12.30	55.217		
2,900.0	2,755.7	2,766.0	2,765.2	15.6	5.7	179.35	10.6	-19.9	723.9	711.1	12.85	56.344		
3,000.0	2,844.5	2,883.9	2,882.8	16.5	6.0	178.77	2.6	-23.0	767.1	753.6	13.46	56.986		
3,100.0	2,933.4	2,989.1	2,987.7	17.5	6.2	178.47	-5.5	-21.9	807.3	793.2	14.04	57.485		
3,200.0	3,022.2	3,073.6	3,071.9	18.5	6.4	178.42	-10.5	-19.3	847.5	832.9	14.59	58.088		
3,300.0	3,111.0	3,149.6	3,147.8	19.5	6.5	178.39	-14.3	-17.6	888.8	873.7	15.12	58.768		
3,400.0	3,199.9	3,218.9	3,217.1	20.4	6.7	178.38	-16.5	-17.0	932.1	916.5	15.65	59.570		
3,500.0	3,288.7	3,302.0	3,300.2	21.4	6.9	178.35	-18.3	-17.3	976.8	960.6	16.20	60.300		

Offset Design      SRC Kiehn Pad Sec.4-T4N-R68W - SRC Kiehn C-4CHZ - Wellbore #1 - Wellbore #1													Offset Site Error:      0.0 ft	
Survey Program: 103-MWD													Offset Well Error:      0.0 ft	
Reference		Offset		Semi Major Axis			Distance							Warning
Measured Depth	Vertical Depth	Measured Depth	Vertical Depth	Reference	Offset	Highside Toolface	Offset Wellbore Centre		Between Centres	Between Ellipses	Minimum Separation	Separation Factor		
(ft)	(ft)	(ft)	(ft)	(ft)	(ft)	(°)	+N/-S (ft)	+E/-W (ft)	(ft)	(ft)	(ft)			
0.0	0.0	0.5	0.5	0.0	0.0	39.67	30.6	25.4	39.7	39.7	0.00	N/A		
100.0	100.0	100.6	100.6	0.1	0.1	39.23	30.7	25.0	39.6	39.4	0.23	175.403		
179.6	179.6	180.1	180.1	0.3	0.3	38.45	30.8	24.5	39.4	38.8	0.57	68.757 CC		
200.0	200.0	200.4	200.4	0.3	0.3	38.09	31.0	24.3	39.4	38.8	0.66	59.477 ES		
300.0	300.0	299.9	299.8	0.6	0.5	34.84	33.2	23.1	40.5	39.4	1.11	36.625		
400.0	400.0	399.5	399.4	0.8	0.8	31.31	36.3	22.1	42.5	41.0	1.55	27.422		
500.0	500.0	499.2	499.0	1.0	1.0	26.85	40.7	20.6	45.6	43.6	2.00	22.779		
600.0	600.0	599.1	598.7	1.2	1.2	21.60	45.5	18.0	49.0	46.6	2.46	19.921		
700.0	700.0	699.6	699.1	1.5	1.4	17.35	50.0	15.6	52.4	49.5	2.91	18.022		
800.0	800.0	801.0	800.5	1.7	1.6	-121.96	51.6	15.3	54.7	51.4	3.29	16.647		
900.0	899.8	901.2	900.7	1.9	1.8	-125.70	50.9	15.8	57.1	53.4	3.67	15.559		
1,000.0	999.5	1,000.9	1,000.4	2.1	2.0	-132.90	50.3	14.9	61.9	57.8	4.08	15.178 SF		
1,100.0	1,098.7	1,099.1	1,098.6	2.3	2.3	-141.38	50.3	13.1	70.9	66.4	4.50	15.774		
1,200.0	1,197.5	1,199.2	1,198.6	2.6	2.5	-148.65	50.2	12.2	83.8	78.9	4.91	17.074		
1,300.0	1,295.6	1,296.0	1,295.4	2.9	2.7	-153.92	50.2	12.4	100.6	95.3	5.32	18.912		
1,400.0	1,393.1	1,391.9	1,391.3	3.3	2.9	-157.61	52.0	13.4	122.6	116.9	5.75	21.336		
1,500.0	1,489.6	1,488.9	1,488.3	3.8	3.1	-160.66	54.0	14.2	148.4	142.2	6.17	24.063		
1,600.0	1,585.3	1,585.2	1,584.6	4.3	3.3	-162.92	55.6	15.8	177.1	170.5	6.58	26.896		
1,700.0	1,679.8	1,678.2	1,677.6	4.9	3.5	-165.25	56.6	15.6	209.5	202.5	7.00	29.940		
1,800.0	1,773.2	1,771.2	1,770.6	5.5	3.7	-167.24	57.7	14.8	245.8	238.3	7.41	33.156		
1,900.0	1,865.2	1,864.1	1,863.5	6.3	3.8	-169.10	57.6	13.4	284.8	277.0	7.82	36.413		
2,000.0	1,955.8	1,951.9	1,951.2	7.1	4.0	-170.63	57.7	11.4	327.8	319.6	8.23	39.838		
2,100.0	2,045.0	2,044.8	2,044.2	8.0	4.2	-171.90	57.8	9.9	373.5	364.9	8.67	43.075		
2,200.0	2,133.9	2,139.5	2,138.8	8.9	4.4	-172.92	57.1	9.8	418.6	409.5	9.17	45.644		
2,300.0	2,222.7	2,226.4	2,225.7	9.8	4.6	-173.65	56.3	10.0	463.5	453.9	9.68	47.902		
2,400.0	2,311.5	2,311.0	2,310.3	10.8	4.8	-174.24	56.0	9.7	509.2	499.0	10.19	49.961		
2,500.0	2,400.4	2,400.4	2,399.7	11.7	5.0	-174.84	55.5	8.8	555.1	544.4	10.72	51.809		
2,600.0	2,489.2	2,482.0	2,481.2	12.7	5.1	-175.32	55.4	7.5	601.6	590.4	11.23	53.578		
2,700.0	2,578.0	2,575.3	2,574.6	13.6	5.3	-175.75	55.6	6.2	648.4	636.6	11.77	55.106		
2,800.0	2,666.9	2,666.6	2,665.9	14.6	5.5	-176.07	55.7	5.8	694.6	682.3	12.30	56.475		
2,900.0	2,755.7	2,770.8	2,770.1	15.6	5.7	-176.40	54.6	5.9	739.6	726.8	12.86	57.535		
3,000.0	2,844.5	2,861.5	2,860.7	16.5	5.9	-176.64	53.1	6.8	783.8	770.4	13.39	58.517		
3,100.0	2,933.4	2,962.4	2,961.6	17.5	6.1	-176.83	51.1	8.8	827.1	813.2	13.96	59.267		
3,200.0	3,022.2	3,061.1	3,060.2	18.5	6.3	-177.01	48.4	11.0	869.8	855.3	14.51	59.927		
3,300.0	3,111.0	3,180.0	3,179.0	19.5	6.6	-177.28	42.3	14.8	910.3	895.2	15.11	60.250		
3,400.0	3,199.9	3,288.0	3,286.6	20.4	6.8	-177.45	35.3	20.5	948.6	932.9	15.69	60.452		
3,500.0	3,288.7	3,364.4	3,362.7	21.4	6.9	-177.45	31.4	25.8	986.8	970.6	16.23	60.815		

COMPASS 2003.21 Build 46



Offset Design      SRC Kiehn Pad Sec.4-T4N-R68W - SRC Kiehn N-4NHZ - Wellbore #1 - Plan #3 (9-24-14)R													Offset Site Error:      0.0 ft	
Survey Program:    0-MWDD													Offset Well Error:      0.0 ft	
Reference		Offset		Semi Major Axis			Distance						Warning	
Measured Depth (ft)	Vertical Depth (ft)	Measured Depth (ft)	Vertical Depth (ft)	Reference (ft)	Offset (ft)	Highside Toolface (°)	Offset Wellbore Centre +N/-S (ft)	+E/-W (ft)	Between Centres (ft)	Between Ellipses (ft)	Minimum Separation (ft)	Separation Factor		
0.0	0.0	0.5	0.5	0.0	0.0	-71.75	28.8	-87.3	91.9					
100.0	100.0	100.5	100.5	0.1	0.1	-71.75	28.8	-87.3	91.9	91.7	0.23	406.764		
200.0	200.0	200.5	200.5	0.3	0.3	-71.75	28.8	-87.3	91.9	91.2	0.68	136.039		
300.0	300.0	300.5	300.5	0.6	0.6	-71.75	28.8	-87.3	91.9	90.8	1.12	81.678		
400.0	400.0	400.5	400.5	0.8	0.8	-71.75	28.8	-87.3	91.9	90.3	1.57	58.358		
500.0	500.0	500.5	500.5	1.0	1.0	-71.75	28.8	-87.3	91.9	89.9	2.02	45.397		
600.0	600.0	600.5	600.5	1.2	1.2	-71.75	28.8	-87.3	91.9	89.4	2.47	37.147		
700.0	700.0	700.5	700.5	1.5	1.5	-71.75	28.8	-87.3	91.9	89.0	2.92	31.434 CC, ES		
800.0	800.0	800.5	800.5	1.7	1.7	151.87	28.8	-87.3	93.4	90.1	3.35	27.895		
900.0	899.8	900.3	900.3	1.9	1.9	153.27	28.8	-87.3	98.1	94.3	3.76	26.092		
1,000.0	999.5	1,000.0	1,000.0	2.1	2.1	155.32	28.8	-87.3	105.9	101.7	4.18	25.366 SF		
1,100.0	1,098.7	1,099.2	1,099.2	2.3	2.4	157.72	28.8	-87.3	117.1	112.5	4.60	25.464		
1,200.0	1,197.5	1,198.0	1,198.0	2.6	2.6	160.20	28.8	-87.3	131.7	126.7	5.03	26.208		
1,300.0	1,295.6	1,296.1	1,296.1	2.9	2.8	162.56	28.8	-87.3	149.9	144.4	5.46	27.463		
1,400.0	1,393.1	1,393.6	1,393.6	3.3	3.0	164.69	28.8	-87.3	171.5	165.6	5.89	29.127		
1,500.0	1,489.6	1,486.0	1,485.9	3.8	3.2	166.20	28.5	-88.5	197.6	191.3	6.30	31.350		
1,600.0	1,585.3	1,576.1	1,576.0	4.3	3.4	166.95	27.7	-92.6	229.1	222.4	6.72	34.122		
1,700.0	1,679.8	1,663.8	1,663.4	4.9	3.6	167.16	26.4	-99.2	266.0	258.8	7.14	37.257		
1,800.0	1,773.2	1,748.7	1,747.8	5.5	3.8	167.01	24.7	-108.0	307.9	300.3	7.58	40.629		
1,900.0	1,865.2	1,830.5	1,828.9	6.3	4.0	166.63	22.5	-118.9	354.6	346.6	8.03	44.142		
2,000.0	1,955.8	1,909.1	1,906.4	7.1	4.2	166.10	20.0	-131.5	406.0	397.5	8.51	47.706		
2,100.0	2,045.0	1,990.7	1,986.6	8.0	4.4	165.62	17.1	-146.1	461.2	452.2	9.04	51.030		
2,200.0	2,133.9	2,073.6	2,068.2	8.9	4.7	165.44	14.1	-160.9	517.1	507.5	9.62	53.740		
2,300.0	2,222.7	2,156.5	2,149.7	9.8	4.9	165.29	11.2	-175.8	573.0	562.8	10.22	56.077		
2,400.0	2,311.5	2,239.4	2,231.2	10.8	5.2	165.16	8.2	-190.6	628.9	618.1	10.84	58.019		
2,500.0	2,400.4	2,322.3	2,312.7	11.7	5.5	165.06	5.3	-205.5	684.8	673.3	11.46	59.745		
2,600.0	2,489.2	2,405.2	2,394.2	12.7	5.8	164.97	2.3	-220.4	740.7	728.6	12.10	61.235		
2,700.0	2,578.0	2,488.1	2,475.7	13.6	6.1	164.90	-0.6	-235.2	796.6	783.9	12.74	62.532		
2,800.0	2,666.9	2,571.1	2,557.3	14.6	6.4	164.83	-3.6	-250.1	852.5	839.1	13.39	63.671		
2,900.0	2,755.7	2,654.0	2,638.8	15.6	6.7	164.77	-6.5	-264.9	908.4	894.4	14.05	64.676		
3,000.0	2,844.5	2,736.9	2,720.3	16.5	7.0	164.72	-9.5	-279.8	964.3	949.6	14.71	65.567		



SRC Kiehn Pad Sec.4-T4N-R68W - SRC Weis 12-9CHZ - Wellbore #1 - Plan #1 (10-2-14)												Offset Site Error:	0.0 ft
Survey Program: 0-MWD												Offset Well Error:	0.0 ft
Reference		Offset		Semi Major Axis			Distance						Warning
Measured Depth Depth (ft)	Vertical Depth (ft)	Measured Depth (ft)	Vertical Depth (ft)	Reference  (ft)	Offset  (ft)	Highside Toolface (°)	Offset Wellbore Centre +N/-S (ft)	+E/-W (ft)	Between Centres (ft)	Between Ellipses (ft)	Minimum Separation (ft)	Separation Factor	
0.0	0.0	0.0	0.0	0.0	0.0	89.08	0.4	22.6	22.6				
100.0	100.0	100.0	100.0	0.1	0.1	89.08	0.4	22.6	22.6	22.4	0.22	100.481	
200.0	200.0	200.0	200.0	0.3	0.3	89.08	0.4	22.6	22.6	21.9	0.67	33.494	
300.0	300.0	300.0	300.0	0.6	0.6	89.08	0.4	22.6	22.6	21.5	1.12	20.096	
400.0	400.0	400.0	400.0	0.8	0.8	89.08	0.4	22.6	22.6	21.0	1.57	14.354 CC, ES	
500.0	500.0	499.5	499.4	1.0	1.0	92.34	-1.0	23.7	23.7	21.7	2.00	11.856	
600.0	600.0	598.7	598.5	1.2	1.2	100.38	-4.9	27.0	27.5	25.0	2.42	11.341	
700.0	700.0	697.5	696.9	1.5	1.4	109.56	-11.5	32.4	34.5	31.7	2.86	12.090	
800.0	800.0	795.7	794.5	1.7	1.7	-20.26	-20.7	40.0	43.7	40.4	3.27	13.353	
900.0	899.8	893.6	891.2	1.9	2.0	-15.50	-32.3	49.6	53.2	49.5	3.68	14.450	
1,000.0	999.5	991.2	987.0	2.1	2.3	-12.03	-46.5	61.3	62.8	58.7	4.10	15.304	
1,100.0	1,098.7	1,088.5	1,081.9	2.3	2.7	-9.35	-63.1	75.1	72.4	67.9	4.54	15.959	
1,200.0	1,197.5	1,185.4	1,175.6	2.6	3.2	-7.18	-82.1	90.8	82.1	77.1	4.99	16.450	
1,300.0	1,295.6	1,282.0	1,268.2	2.9	3.7	-5.35	-103.4	108.5	91.7	86.2	5.45	16.807	
1,400.0	1,393.1	1,378.3	1,359.4	3.3	4.3	-3.78	-127.1	128.1	101.2	95.2	5.93	17.050	
1,500.0	1,489.6	1,474.3	1,449.3	3.8	5.0	-2.39	-153.0	149.5	110.6	104.2	6.43	17.199	
1,600.0	1,585.3	1,570.0	1,537.8	4.3	5.7	-1.13	-181.1	172.8	120.0	113.0	6.94	17.283	
1,700.0	1,679.8	1,665.4	1,624.7	4.9	6.5	0.02	-211.4	197.9	129.2	121.7	7.48	17.266	
1,800.0	1,773.2	1,762.0	1,711.3	5.5	7.3	1.10	-244.3	225.1	138.2	130.1	8.05	17.168	
1,900.0	1,865.2	1,861.7	1,800.5	6.3	8.2	2.13	-278.7	253.5	144.5	135.8	8.64	16.716	
2,000.0	1,955.8	1,961.7	1,889.9	7.1	9.1	3.15	-313.2	282.1	147.3	138.0	9.26	15.914	
2,100.0	2,045.0	2,061.6	1,979.2	8.0	10.1	4.23	-347.6	310.6	146.9	137.0	9.92	14.810	
2,200.0	2,133.9	2,161.6	2,068.6	8.9	11.0	5.34	-382.1	339.2	145.8	135.1	10.66	13.679	
2,300.0	2,222.7	2,261.5	2,158.0	9.8	11.9	6.46	-416.6	367.7	144.8	133.3	11.43	12.668	
2,400.0	2,311.5	2,361.5	2,247.3	10.8	12.9	7.61	-451.1	396.3	143.8	131.5	12.22	11.759	
2,500.0	2,400.4	2,461.4	2,336.7	11.7	13.8	8.76	-485.6	424.8	142.8	129.8	13.06	10.937	
2,600.0	2,489.2	2,561.4	2,426.1	12.7	14.7	9.94	-520.1	453.3	141.9	128.0	13.93	10.189	
2,700.0	2,578.0	2,661.3	2,515.5	13.6	15.7	11.12	-554.5	481.9	141.1	126.3	14.84	9.507	
2,800.0	2,666.9	2,761.3	2,604.8	14.6	16.6	12.32	-589.0	510.4	140.4	124.6	15.80	8.881	
2,900.0	2,755.7	2,861.3	2,694.2	15.6	17.5	13.54	-623.5	539.0	139.7	122.8	16.81	8.306	
3,000.0	2,844.5	2,961.2	2,783.6	16.5	18.5	14.76	-658.0	567.5	139.0	121.1	17.88	7.777	
3,100.0	2,933.4	3,061.2	2,872.9	17.5	19.4	15.99	-692.5	596.1	138.5	119.5	19.00	7.289	
3,200.0	3,022.2	3,161.1	2,962.3	18.5	20.4	17.24	-727.0	624.6	138.0	117.8	20.17	6.838	
3,300.0	3,111.0	3,261.1	3,051.7	19.5	21.3	18.49	-761.5	653.2	137.5	116.1	21.41	6.422	
3,400.0	3,199.9	3,361.0	3,141.0	20.4	22.3	19.75	-795.9	681.7	137.1	114.4	22.71	6.038	
3,500.0	3,288.7	3,461.0	3,230.4	21.4	23.2	21.02	-830.4	710.2	136.8	112.8	24.08	5.683	
3,600.0	3,377.6	3,560.9	3,319.8	22.4	24.2	22.29	-864.9	738.8	136.6	111.1	25.51	5.355	
3,700.0	3,466.4	3,660.9	3,409.1	23.3	25.1	23.57	-899.4	767.3	136.4	109.4	27.00	5.053	
3,800.0	3,555.2	3,760.8	3,498.5	24.3	26.1	24.84	-933.9	795.9	136.3	107.8	28.56	4.774	
3,900.0	3,644.1	3,860.8	3,587.9	25.3	27.0	26.12	-968.4	824.4	136.3	106.1	30.18	4.516	
3,902.2	3,646.0	3,863.0	3,589.8	25.3	27.0	26.15	-969.1	825.0	136.3	106.1	30.21	4.511	
4,000.0	3,732.9	3,960.7	3,677.2	26.3	28.0	27.40	-1,002.9	853.0	136.3	104.5	31.86	4.279	
4,100.0	3,821.7	4,060.7	3,766.6	27.3	28.9	28.68	-1,037.3	881.5	136.4	102.8	33.60	4.060	
4,200.0	3,910.6	4,160.7	3,856.0	28.2	29.8	29.95	-1,071.8	910.1	136.6	101.2	35.40	3.858	
4,300.0	3,999.4	4,260.6	3,945.4	29.2	30.8	31.23	-1,106.3	938.6	136.8	99.6	37.26	3.672	
4,400.0	4,088.2	4,360.6	4,034.7	30.2	31.7	32.49	-1,140.8	967.1	137.1	98.0	39.17	3.501	
4,500.0	4,177.1	4,460.5	4,124.1	31.2	32.7	33.75	-1,175.3	995.7	137.5	96.4	41.13	3.343	
4,600.0	4,265.9	4,560.5	4,213.5	32.2	33.6	35.01	-1,209.8	1,024.2	137.9	94.8	43.14	3.197	
4,700.0	4,354.7	4,660.4	4,302.8	33.1	34.6	36.25	-1,244.2	1,052.8	138.4	93.2	45.20	3.063	
4,800.0	4,443.6	4,760.4	4,392.2	34.1	35.5	37.49	-1,278.7	1,081.3	139.0	91.7	47.30	2.938	
4,900.0	4,532.4	4,860.3	4,481.6	35.1	36.5	38.71	-1,313.2	1,109.9	139.6	90.2	49.44	2.824	
5,000.0	4,621.2	4,960.3	4,570.9	36.1	37.4	39.92	-1,347.7	1,138.4	140.3	88.7	51.62	2.718	

COMPASS 2003.21 Build 46

<b>Company:</b>	Synergy Resources	<b>Local Co-ordinate Reference:</b>	Well SRC Weis 12-9NHZ
<b>Project:</b>	SEC.4-T4N-R68W	<b>TVD Reference:</b>	WELL @ 5077.0ft (Original Well Elev)
<b>Reference Site:</b>	SRC Kiehn Pad Sec.4-T4N-R68W	<b>MD Reference:</b>	WELL @ 5077.0ft (Original Well Elev)
<b>Site Error:</b>	0.0ft	<b>North Reference:</b>	True
<b>Reference Well:</b>	SRC Weis 12-9NHZ	<b>Survey Calculation Method:</b>	Minimum Curvature
<b>Well Error:</b>	0.0ft	<b>Output errors are at</b>	2.00 sigma
<b>Reference Wellbore</b>	Wellbore #1	<b>Database:</b>	Landmark
<b>Reference Design:</b>	Plan #1 (10-2-14)	<b>Offset TVD Reference:</b>	Offset Datum

Offset Design													Offset Site Error:	0.0 ft
Survey Program: 0-MWID													Offset Well Error:	0.0 ft
Reference		Offset		Semi Major Axis			Distance							Warning
Measured Depth (ft)	Vertical Depth (ft)	Measured Depth (ft)	Vertical Depth (ft)	Reference (ft)	Offset (ft)	Highside Toolface (°)	Offset Wellbore Centre +N/-S (ft)	+E/-W (ft)	Between Centres (ft)	Between Ellipses (ft)	Minimum Separation (ft)	Separation Factor		
5,100.0	4,710.1	5,060.2	4,660.3	37.1	38.4	41.12	-1,382.2	1,166.9	141.1	87.2	53.84	2.621		
5,200.0	4,798.9	5,160.2	4,749.7	38.0	39.3	42.31	-1,416.7	1,195.5	141.9	85.8	56.08	2.530		
5,300.0	4,887.8	5,260.1	4,839.0	39.0	40.3	43.49	-1,451.2	1,224.0	142.8	84.4	58.35	2.447		
5,400.0	4,976.6	5,360.1	4,928.4	40.0	41.2	44.64	-1,485.6	1,252.6	143.7	83.1	60.65	2.370		
5,500.0	5,065.4	5,460.0	5,017.8	41.0	42.2	45.79	-1,520.1	1,281.1	144.7	81.7	62.97	2.298		
5,600.0	5,154.3	5,560.0	5,107.1	42.0	43.1	46.91	-1,554.6	1,309.7	145.8	80.5	65.30	2.232		
5,700.0	5,243.1	5,660.0	5,196.5	42.9	44.1	48.02	-1,589.1	1,338.2	146.9	79.2	67.66	2.171		
5,800.0	5,331.9	5,759.9	5,285.9	43.9	45.0	49.12	-1,623.6	1,366.8	148.0	78.0	70.03	2.114		
5,900.0	5,420.8	5,859.9	5,375.2	44.9	46.0	50.19	-1,658.1	1,395.3	149.2	76.8	72.41	2.061		
6,000.0	5,509.6	5,959.8	5,464.6	45.9	46.9	51.25	-1,692.6	1,423.8	150.5	75.7	74.81	2.012		
6,100.0	5,598.4	6,059.8	5,554.0	46.9	47.9	52.29	-1,727.0	1,452.4	151.8	74.6	77.21	1.966		
6,200.0	5,687.3	6,159.7	5,643.4	47.8	48.8	53.31	-1,761.5	1,480.9	153.2	73.6	79.61	1.924		
6,300.0	5,776.1	6,259.7	5,732.7	48.8	49.8	54.32	-1,796.0	1,509.5	154.6	72.6	82.03	1.885		
6,400.0	5,864.9	6,359.6	5,822.1	49.8	50.7	55.30	-1,830.5	1,538.0	156.1	71.6	84.44	1.848		
6,500.0	5,953.8	6,459.6	5,911.5	50.8	51.7	56.27	-1,865.0	1,566.6	157.6	70.7	86.85	1.814		
6,600.0	6,042.6	6,559.5	6,000.8	51.8	52.6	57.22	-1,899.5	1,595.1	159.1	69.9	89.27	1.783		
6,700.0	6,131.4	6,659.5	6,090.2	52.8	53.6	58.15	-1,933.9	1,623.6	160.7	69.0	91.68	1.753		
6,800.0	6,220.9	6,759.5	6,179.6	53.6	54.5	59.12	-1,968.4	1,652.2	161.6	68.3	93.28	1.732		
6,900.0	6,310.0	6,859.6	6,268.3	54.2	55.5	60.19	-2,002.7	1,680.5	158.6	68.3	90.33	1.756		
7,000.0	6,406.3	6,959.9	6,353.9	54.6	56.3	-0.36	-2,035.7	1,705.8	154.8	72.1	82.78	1.871		
7,053.2	6,455.8	7,004.5	6,400.3	54.8	56.6	-15.77	-2,053.7	1,714.8	154.3	76.1	78.12	1.975		
7,100.0	6,499.0	7,049.9	6,442.3	54.9	56.9	-28.43	-2,070.0	1,719.9	154.7	80.7	74.02	2.090		
7,200.0	6,589.4	7,149.3	6,534.9	55.1	57.3	-51.57	-2,106.2	1,721.0	158.8	93.0	65.81	2.414		
7,300.0	6,675.5	7,252.6	6,630.2	55.1	57.6	-69.58	-2,143.5	1,707.6	166.9	107.7	59.15	2.821		
7,400.0	6,755.9	7,360.3	6,726.4	55.0	57.8	-83.44	-2,181.5	1,678.2	177.9	123.7	54.20	3.282		
7,500.0	6,828.8	7,472.5	6,821.1	54.9	57.8	-94.08	-2,219.1	1,631.3	190.7	140.1	50.66	3.765		
7,600.0	6,893.0	7,589.6	6,911.2	54.8	57.8	-102.20	-2,255.2	1,566.2	204.2	155.8	48.41	4.218		
7,700.0	6,947.0	7,711.5	6,993.2	54.6	57.6	-108.30	-2,288.3	1,482.5	217.1	169.4	47.74	4.547		
7,800.0	6,990.0	7,837.9	7,062.9	54.3	57.4	-112.73	-2,316.9	1,381.2	228.4	179.2	49.14	4.648		
7,900.0	7,021.0	7,968.2	7,116.2	54.1	57.1	-115.74	-2,339.3	1,264.6	237.2	184.3	52.85	4.488		
8,000.0	7,039.4	8,101.3	7,149.4	53.9	56.7	-117.47	-2,354.1	1,136.7	242.8	184.2	58.64	4.141		
8,100.0	7,045.0	8,234.3	7,160.0	53.7	56.4	-118.02	-2,360.0	1,004.5	244.8	179.5	65.36	3.746		
8,200.0	7,045.0	8,334.3	7,160.0	53.5	56.2	-118.01	-2,361.4	904.5	244.9	178.4	66.49	3.683		
8,300.0	7,045.0	8,434.3	7,160.0	53.4	55.9	-118.00	-2,362.7	804.5	245.0	177.0	67.95	3.605		
8,400.0	7,045.0	8,534.3	7,160.0	53.3	55.8	-117.99	-2,364.1	704.5	245.1	175.3	69.74	3.514		
8,500.0	7,045.0	8,634.3	7,160.0	53.3	55.7	-117.97	-2,365.5	604.5	245.2	173.3	71.83	3.413		
8,600.0	7,045.0	8,734.3	7,160.0	53.4	55.6	-117.96	-2,366.9	504.6	245.2	171.0	74.20	3.305		
8,700.0	7,045.0	8,834.3	7,160.0	53.6	55.6	-117.95	-2,368.2	404.6	245.3	168.5	76.82	3.193		
8,800.0	7,045.0	8,934.3	7,160.0	54.0	55.7	-117.94	-2,369.6	304.6	245.4	165.7	79.68	3.080		
8,900.0	7,045.0	9,034.3	7,160.0	54.5	55.9	-117.93	-2,371.0	204.6	245.5	162.8	82.74	2.967		
9,000.0	7,045.0	9,134.3	7,160.0	55.2	56.3	-117.92	-2,372.3	104.6	245.6	159.6	85.98	2.856		
9,100.0	7,045.0	9,234.3	7,160.0	56.1	56.8	-117.91	-2,373.7	4.6	245.7	156.3	89.39	2.748		
9,200.0	7,045.0	9,334.3	7,160.0	57.3	57.6	-117.90	-2,375.1	-95.4	245.8	152.8	92.95	2.644		
9,300.0	7,045.0	9,434.3	7,160.0	58.7	58.7	-117.89	-2,376.4	-195.4	245.8	149.2	96.63	2.544		
9,400.0	7,045.0	9,534.3	7,160.0	60.3	60.0	-117.88	-2,377.8	-295.4	245.9	145.5	100.43	2.449		
9,500.0	7,045.0	9,634.3	7,160.0	62.0	61.6	-117.87	-2,379.2	-395.4	246.0	141.7	104.34	2.358		
9,600.0	7,045.0	9,734.3	7,160.0	64.0	63.4	-117.86	-2,380.6	-495.4	246.1	137.8	108.34	2.272		
9,700.0	7,045.0	9,834.3	7,160.0	66.0	65.4	-117.85	-2,381.9	-595.3	246.2	133.8	112.42	2.190		
9,800.0	7,045.0	9,934.3	7,160.0	68.1	67.5	-117.84	-2,383.3	-695.3	246.3	129.7	116.57	2.113		
9,900.0	7,045.0	10,034.3	7,160.0	70.4	69.7	-117.83	-2,384.7	-795.3	246.3	125.6	120.79	2.039		
10,000.0	7,045.0	10,134.3	7,160.0	72.6	71.9	-117.82	-2,386.0	-895.3	246.4	121.4	125.07	1.970		
10,100.0	7,045.0	10,234.3	7,160.0	75.0	74.3	-117.81	-2,387.4	-995.3	246.5	117.1	129.40	1.905		

CC - Min centre to center distance or convergent point, SF - min separation factor, ES - min ellipse separation

Offset Design													Offset Site Error:		0.0 ft
Survey Program: 0-MWD													Offset Well Error:		0.0 ft
Reference		Offset		Semi Major Axis			Distance								
Measured Depth (ft)	Vertical Depth (ft)	Measured Depth (ft)	Vertical Depth (ft)	Reference (ft)	Offset (ft)	Highside Toolface (°)	Offset Wellbore Centre +N/-S (ft)	+E/-W (ft)	Between Centres (ft)	Between Ellipses (ft)	Minimum Separation (ft)	Separation Factor	Warning		
10,200.0	7,045.0	10,334.3	7,160.0	77.4	76.7	-117.80	-2,388.8	-1,095.3	246.6	112.8	133.79	1.843			
10,300.0	7,045.0	10,434.3	7,160.0	79.8	79.1	-117.79	-2,390.1	-1,195.3	246.7	108.5	138.21	1.785			
10,400.0	7,045.0	10,534.3	7,160.0	82.2	81.6	-117.78	-2,391.5	-1,295.3	246.8	104.1	142.68	1.730			
10,500.0	7,045.0	10,634.3	7,160.0	84.7	84.0	-117.77	-2,392.9	-1,395.3	246.9	99.7	147.19	1.677			
10,600.0	7,045.0	10,734.3	7,160.0	87.2	86.6	-117.76	-2,394.3	-1,495.3	246.9	95.2	151.72	1.628			
10,700.0	7,045.0	10,834.3	7,160.0	89.7	89.1	-117.75	-2,395.6	-1,595.3	247.0	90.7	156.29	1.581			
10,800.0	7,045.0	10,934.3	7,160.0	92.3	91.6	-117.74	-2,397.0	-1,695.2	247.1	86.2	160.89	1.536			
10,900.0	7,045.0	11,034.3	7,160.0	94.9	94.2	-117.72	-2,398.4	-1,795.2	247.2	81.7	165.51	1.494	Level 3		
11,000.0	7,045.0	11,134.3	7,160.0	97.4	96.8	-117.71	-2,399.7	-1,895.2	247.3	77.1	170.16	1.453	Level 3		
11,100.0	7,045.0	11,234.3	7,160.0	100.0	99.4	-117.70	-2,401.1	-1,995.2	247.4	72.5	174.83	1.415	Level 3		
11,200.0	7,045.0	11,334.3	7,160.0	102.6	102.0	-117.69	-2,402.5	-2,095.2	247.4	67.9	179.52	1.378	Level 3		
11,300.0	7,045.0	11,434.3	7,160.0	105.2	104.6	-117.68	-2,403.8	-2,195.2	247.5	63.3	184.22	1.344	Level 3		
11,400.0	7,045.0	11,534.3	7,160.0	107.9	107.2	-117.67	-2,405.2	-2,295.2	247.6	58.7	188.95	1.311	Level 3		
11,500.0	7,045.0	11,634.3	7,160.0	110.5	109.9	-117.66	-2,406.6	-2,395.2	247.7	54.0	193.69	1.279	Level 3		
11,600.0	7,045.0	11,734.3	7,160.0	113.1	112.5	-117.65	-2,408.0	-2,495.2	247.8	49.3	198.45	1.249	Level 2		
11,700.0	7,045.0	11,834.3	7,160.0	115.8	115.2	-117.64	-2,409.3	-2,595.2	247.9	44.7	203.22	1.220	Level 2		
11,800.0	7,045.0	11,934.3	7,160.0	118.4	117.8	-117.63	-2,410.7	-2,695.1	248.0	40.0	208.00	1.192	Level 2		
11,900.0	7,045.0	12,034.3	7,160.0	121.1	120.5	-117.62	-2,412.1	-2,795.1	248.0	35.2	212.80	1.166	Level 2		
12,000.0	7,045.0	12,134.3	7,160.0	123.8	123.2	-117.61	-2,413.4	-2,895.1	248.1	30.5	217.61	1.140	Level 2		
12,100.0	7,045.0	12,234.3	7,160.0	126.4	125.8	-117.60	-2,414.8	-2,995.1	248.2	25.8	222.43	1.116	Level 2		
12,150.7	7,045.0	12,284.9	7,160.0	127.8	127.2	-117.60	-2,415.5	-3,045.8	248.3	23.4	224.87	1.104	Level 2, SF		

<b>Company:</b>	Synergy Resources	<b>Local Co-ordinate Reference:</b>	Well SRC Weis 12-9NHZ
<b>Project:</b>	SEC.4-T4N-R68W	<b>TVD Reference:</b>	WELL @ 5077.0ft (Original Well Elev)
<b>Reference Site:</b>	SRC Kiehn Pad Sec.4-T4N-R68W	<b>MD Reference:</b>	WELL @ 5077.0ft (Original Well Elev)
<b>Site Error:</b>	0.0ft	<b>North Reference:</b>	True
<b>Reference Well:</b>	SRC Weis 12-9NHZ	<b>Survey Calculation Method:</b>	Minimum Curvature
<b>Well Error:</b>	0.0ft	<b>Output errors are at</b>	2.00 sigma
<b>Reference Wellbore</b>	Wellbore #1	<b>Database:</b>	Landmark
<b>Reference Design:</b>	Plan #1 (10-2-14)	<b>Offset TVD Reference:</b>	Offset Datum

Offset Design													Offset Site Error:	0.0 ft
Survey Program: 0-MWD													Offset Well Error:	0.0 ft
Reference		Offset		Semi Major Axis			Distance							Warning
Measured Depth (ft)	Vertical Depth (ft)	Measured Depth (ft)	Vertical Depth (ft)	Reference (ft)	Offset (ft)	Highside Toolface (°)	Offset Wellbore Centre +N/-S (ft)	+E/-W (ft)	Between Centres (ft)	Between Ellipses (ft)	Minimum Separation (ft)	Separation Factor		
0.0	0.0	0.0	0.0	0.0	0.0	-90.94	-0.4	-22.3	22.3					
100.0	100.0	100.0	100.0	0.1	0.1	-90.94	-0.4	-22.3	22.3	22.1	0.22	99.241		
200.0	200.0	200.0	200.0	0.3	0.3	-90.94	-0.4	-22.3	22.3	21.6	0.67	33.080		
300.0	300.0	300.0	300.0	0.6	0.6	-90.94	-0.4	-22.3	22.3	21.2	1.12	19.848		
400.0	400.0	400.0	400.0	0.8	0.8	-90.94	-0.4	-22.3	22.3	20.7	1.57	14.177		
500.0	500.0	500.0	500.0	1.0	1.0	-90.94	-0.4	-22.3	22.3	20.3	2.02	11.027		
600.0	600.0	600.0	600.0	1.2	1.2	-90.94	-0.4	-22.3	22.3	19.8	2.47	9.022		
700.0	700.0	700.0	700.0	1.5	1.5	-90.94	-0.4	-22.3	22.3	19.4	2.92	7.634 CC		
800.0	800.0	800.0	800.0	1.7	1.7	135.31	-0.4	-22.3	23.5	20.2	3.35	7.024		
900.0	899.8	899.8	899.8	1.9	1.9	142.96	-0.4	-22.3	27.5	23.7	3.76	7.314		
1,000.0	999.5	1,000.5	1,000.5	2.1	2.1	150.37	-1.6	-21.0	33.3	29.1	4.15	8.012		
1,100.0	1,098.7	1,101.5	1,101.3	2.3	2.3	155.82	-5.2	-17.1	39.3	34.8	4.53	8.676		
1,200.0	1,197.5	1,202.6	1,202.1	2.6	2.5	160.05	-11.3	-10.7	45.5	40.6	4.93	9.243		
1,300.0	1,295.6	1,304.1	1,302.7	2.9	2.7	163.49	-19.8	-1.6	51.8	46.5	5.33	9.721		
1,400.0	1,393.1	1,405.7	1,403.1	3.3	3.0	166.38	-30.8	10.2	58.2	52.4	5.75	10.118		
1,500.0	1,489.6	1,507.7	1,503.1	3.8	3.3	168.89	-44.3	24.5	64.5	58.4	6.18	10.443		
1,600.0	1,585.3	1,609.8	1,602.6	4.3	3.7	171.13	-60.3	41.5	70.9	64.3	6.62	10.705		
1,700.0	1,679.8	1,712.2	1,701.4	4.9	4.2	173.16	-78.7	61.1	77.3	70.2	7.08	10.908		
1,800.0	1,773.2	1,814.9	1,799.4	5.5	4.7	175.03	-99.5	83.3	83.6	76.0	7.56	11.054		
1,900.0	1,865.2	1,917.8	1,896.5	6.3	5.3	176.78	-122.8	108.1	89.9	81.8	8.06	11.157		
2,000.0	1,955.8	2,020.9	1,992.5	7.1	6.0	178.43	-148.6	135.5	96.2	87.6	8.58	11.206		
2,100.0	2,045.0	2,124.2	2,087.3	8.0	6.8	-179.99	-176.7	165.5	102.2	93.0	9.17	11.146		
2,200.0	2,133.9	2,227.8	2,180.8	8.9	7.6	-178.44	-207.3	198.0	105.5	95.6	9.85	10.705		
2,300.0	2,222.7	2,327.7	2,270.2	9.8	8.5	-176.93	-237.8	230.5	107.1	96.6	10.57	10.134		
2,400.0	2,311.5	2,427.7	2,359.7	10.8	9.4	-175.46	-268.3	263.0	108.9	97.5	11.33	9.610		
2,500.0	2,400.4	2,527.6	2,449.1	11.7	10.3	-174.05	-298.9	295.5	110.7	98.5	12.13	9.126		
2,600.0	2,489.2	2,627.6	2,538.5	12.7	11.2	-172.68	-329.4	328.0	112.5	99.6	12.97	8.677		
2,700.0	2,578.0	2,727.5	2,628.0	13.6	12.1	-171.36	-359.9	360.5	114.4	100.6	13.85	8.261		
2,800.0	2,666.9	2,827.5	2,717.4	14.6	13.0	-170.08	-390.4	393.0	116.4	101.6	14.79	7.874		
2,900.0	2,755.7	2,927.4	2,806.9	15.6	14.0	-168.84	-421.0	425.5	118.5	102.7	15.76	7.515		
3,000.0	2,844.5	3,027.4	2,896.3	16.5	14.9	-167.65	-451.5	458.0	120.6	103.8	16.79	7.182		
3,100.0	2,933.4	3,127.3	2,985.8	17.5	15.8	-166.49	-482.0	490.5	122.7	104.9	17.85	6.873		
3,200.0	3,022.2	3,227.3	3,075.2	18.5	16.8	-165.38	-512.6	523.0	124.9	105.9	18.96	6.587		
3,300.0	3,111.0	3,327.2	3,164.7	19.5	17.7	-164.31	-543.1	555.5	127.1	107.0	20.11	6.322		
3,400.0	3,199.9	3,427.1	3,254.1	20.4	18.6	-163.27	-573.6	588.1	129.4	108.1	21.30	6.076		
3,500.0	3,288.7	3,527.1	3,343.6	21.4	19.6	-162.27	-604.1	620.6	131.7	109.2	22.53	5.848		
3,600.0	3,377.6	3,627.0	3,433.0	22.4	20.5	-161.30	-634.7	653.1	134.1	110.3	23.79	5.637		
3,700.0	3,466.4	3,727.0	3,522.5	23.3	21.5	-160.37	-665.2	685.6	136.5	111.4	25.08	5.442		
3,800.0	3,555.2	3,826.9	3,611.9	24.3	22.4	-159.47	-695.7	718.1	138.9	112.5	26.41	5.261		
3,900.0	3,644.1	3,926.9	3,701.4	25.3	23.4	-158.60	-726.3	750.6	141.4	113.6	27.76	5.093		
4,000.0	3,732.9	4,026.8	3,790.8	26.3	24.3	-157.77	-756.8	783.1	143.9	114.7	29.14	4.937		
4,100.0	3,821.7	4,126.8	3,880.3	27.3	25.3	-156.96	-787.3	815.6	146.4	115.9	30.55	4.792		
4,200.0	3,910.6	4,226.7	3,969.7	28.2	26.2	-156.17	-817.8	848.1	149.0	117.0	31.98	4.658		
4,300.0	3,999.4	4,326.7	4,059.2	29.2	27.2	-155.42	-848.4	880.6	151.5	118.1	33.43	4.532		
4,400.0	4,088.2	4,426.6	4,148.6	30.2	28.1	-154.69	-878.9	913.1	154.1	119.2	34.91	4.416		
4,500.0	4,177.1	4,526.6	4,238.1	31.2	29.1	-153.98	-909.4	945.6	156.8	120.4	36.40	4.307		
4,600.0	4,265.9	4,626.5	4,327.5	32.2	30.0	-153.30	-939.9	978.1	159.4	121.5	37.91	4.205		
4,700.0	4,354.7	4,726.5	4,417.0	33.1	31.0	-152.64	-970.5	1,010.6	162.1	122.7	39.44	4.110		
4,800.0	4,443.6	4,826.4	4,506.4	34.1	32.0	-152.00	-1,001.0	1,043.1	164.8	123.8	40.98	4.021		
4,900.0	4,532.4	4,926.4	4,595.8	35.1	32.9	-151.38	-1,031.5	1,075.6	167.5	125.0	42.54	3.937		
5,000.0	4,621.2	5,026.3	4,685.3	36.1	33.9	-150.78	-1,062.1	1,108.1	170.2	126.1	44.11	3.859		
5,100.0	4,710.1	5,126.3	4,774.7	37.1	34.8	-150.20	-1,092.6	1,140.6	173.0	127.3	45.70	3.786		

CC - Min centre to center distance or convergent point, SF - min separation factor, ES - min ellipse separation

<b>Company:</b>	Synergy Resources	<b>Local Co-ordinate Reference:</b>	Well SRC Weis 12-9NHZ
<b>Project:</b>	SEC.4-T4N-R68W	<b>TVD Reference:</b>	WELL @ 5077.0ft (Original Well Elev)
<b>Reference Site:</b>	SRC Kiehn Pad Sec.4-T4N-R68W	<b>MD Reference:</b>	WELL @ 5077.0ft (Original Well Elev)
<b>Site Error:</b>	0.0ft	<b>North Reference:</b>	True
<b>Reference Well:</b>	SRC Weis 12-9NHZ	<b>Survey Calculation Method:</b>	Minimum Curvature
<b>Well Error:</b>	0.0ft	<b>Output errors are at</b>	2.00 sigma
<b>Reference Wellbore</b>	Wellbore #1	<b>Database:</b>	Landmark
<b>Reference Design:</b>	Plan #1 (10-2-14)	<b>Offset TVD Reference:</b>	Offset Datum

Offset Design SRC Kiehn Pad Sec.4-T4N-R68W - SRC Weis A-9CHZ - Wellbore #1 - Plan #1 (10-2-14)													Offset Site Error:	0.0 ft
Survey Program: 0-MWDD													Offset Well Error:	0.0 ft
Reference		Offset		Semi Major Axis			Distance							Warning
Measured Depth (ft)	Vertical Depth (ft)	Measured Depth (ft)	Vertical Depth (ft)	Reference (ft)	Offset (ft)	Highside Toolface (°)	Offset Wellbore Centre +N/-S (ft)	+E/-W (ft)	Between Centres (ft)	Between Ellipses (ft)	Minimum Separation (ft)	Separation Factor		
5,200.0	4,798.9	5,226.2	4,864.2	38.0	35.8	-149.64	-1,123.1	1,173.1	175.8	128.5	47.29	3.716		
5,300.0	4,887.8	5,326.1	4,953.6	39.0	36.7	-149.10	-1,153.6	1,205.6	178.5	129.6	48.90	3.651		
5,400.0	4,976.6	5,426.1	5,043.1	40.0	37.7	-148.57	-1,184.2	1,238.1	181.3	130.8	50.52	3.590		
5,500.0	5,065.4	5,526.0	5,132.5	41.0	38.6	-148.06	-1,214.7	1,270.6	184.2	132.0	52.14	3.532		
5,600.0	5,154.3	5,626.0	5,222.0	42.0	39.6	-147.57	-1,245.2	1,303.1	187.0	133.2	53.78	3.477		
5,700.0	5,243.1	5,725.9	5,311.4	42.9	40.6	-147.09	-1,275.8	1,335.7	189.8	134.4	55.42	3.425		
5,800.0	5,331.9	5,825.9	5,400.9	43.9	41.5	-146.62	-1,306.3	1,368.2	192.7	135.6	57.07	3.376		
5,900.0	5,420.8	5,925.8	5,490.3	44.9	42.5	-146.17	-1,336.8	1,400.7	195.6	136.8	58.73	3.330		
6,000.0	5,509.6	6,025.8	5,579.8	45.9	43.4	-145.73	-1,367.3	1,433.2	198.4	138.0	60.39	3.286		
6,100.0	5,598.4	6,125.7	5,669.2	46.9	44.4	-145.30	-1,397.9	1,465.7	201.3	139.3	62.07	3.244		
6,200.0	5,687.3	6,225.7	5,758.7	47.8	45.3	-144.89	-1,428.4	1,498.2	204.2	140.5	63.74	3.204		
6,300.0	5,776.1	6,325.6	5,848.1	48.8	46.3	-144.48	-1,458.9	1,530.7	207.1	141.7	65.42	3.166		
6,400.0	5,864.9	6,425.6	5,937.6	49.8	47.3	-144.09	-1,489.5	1,563.2	210.1	143.0	67.11	3.130		
6,500.0	5,953.8	6,525.5	6,027.0	50.8	48.2	-143.71	-1,520.0	1,595.7	213.0	144.2	68.80	3.096		
6,600.0	6,042.6	6,625.5	6,116.5	51.8	49.2	-143.34	-1,550.5	1,628.2	215.9	145.4	70.50	3.063		
6,700.0	6,131.4	6,725.4	6,205.9	52.8	50.1	-142.98	-1,581.0	1,660.7	218.9	146.7	72.20	3.032		
6,800.0	6,220.9	6,825.0	6,295.2	53.6	51.0	-150.14	-1,611.5	1,692.4	221.8	147.8	74.05	2.995		
6,900.0	6,313.0	6,924.2	6,386.8	54.2	51.6	-166.54	-1,643.0	1,713.7	224.8	149.0	75.86	2.964		
7,000.0	6,406.3	7,024.1	6,480.9	54.6	52.0	173.83	-1,675.4	1,721.4	228.0	150.7	77.24	2.952		
7,100.0	6,499.0	7,124.7	6,575.7	54.9	52.3	155.83	-1,708.3	1,715.2	231.2	153.0	78.16	2.958		
7,200.0	6,589.4	7,226.0	6,669.2	55.1	52.5	142.58	-1,741.0	1,694.7	234.4	155.8	78.63	2.981		
7,300.0	6,675.5	7,328.0	6,759.7	55.1	52.5	133.74	-1,772.8	1,660.3	237.6	158.9	78.68	3.019		
7,400.0	6,755.9	7,430.6	6,845.1	55.0	52.4	127.95	-1,803.0	1,612.2	240.6	162.2	78.37	3.070		
7,500.0	6,828.8	7,533.9	6,923.5	54.9	52.3	124.11	-1,831.0	1,551.3	243.3	165.5	77.79	3.128		
7,600.0	6,893.0	7,637.7	6,993.1	54.8	52.1	121.53	-1,856.1	1,478.6	245.8	168.7	77.06	3.189		
7,700.0	6,947.0	7,742.0	7,052.3	54.6	51.9	119.78	-1,877.7	1,395.6	247.8	171.5	76.32	3.247		
7,800.0	6,990.0	7,846.7	7,099.6	54.3	51.6	118.60	-1,895.3	1,303.9	249.5	173.8	75.71	3.295		
7,900.0	7,021.0	7,951.7	7,133.8	54.1	51.4	117.84	-1,908.5	1,205.6	250.6	175.2	75.38	3.325		
8,000.0	7,039.4	8,056.8	7,154.1	53.9	51.2	117.39	-1,916.9	1,102.9	251.3	175.8	75.43	3.331		
8,100.0	7,045.0	8,161.6	7,160.0	53.7	51.1	117.23	-1,920.4	998.5	251.4	175.4	75.95	3.310		
8,200.0	7,045.0	8,261.6	7,160.0	53.5	51.0	117.24	-1,921.8	898.5	251.3	173.9	77.38	3.248		
8,300.0	7,045.0	8,361.6	7,160.0	53.4	50.9	117.24	-1,923.1	798.5	251.2	172.1	79.08	3.177		
8,400.0	7,045.0	8,461.6	7,160.0	53.3	51.0	117.25	-1,924.5	698.5	251.1	170.1	81.06	3.098		
8,500.0	7,045.0	8,561.6	7,160.0	53.3	51.1	117.26	-1,925.8	598.5	251.1	167.8	83.30	3.014		
8,600.0	7,045.0	8,661.6	7,160.0	53.4	51.4	117.27	-1,927.2	498.5	251.0	165.2	85.78	2.926		
8,700.0	7,045.0	8,761.6	7,160.0	53.6	51.9	117.28	-1,928.6	398.6	250.9	162.4	88.46	2.836		
8,800.0	7,045.0	8,861.6	7,160.0	54.0	52.5	117.29	-1,929.9	298.6	250.8	159.5	91.35	2.746		
8,900.0	7,045.0	8,961.6	7,160.0	54.5	53.3	117.30	-1,931.3	198.6	250.7	156.3	94.42	2.656		
9,000.0	7,045.0	9,061.6	7,160.0	55.2	54.3	117.31	-1,932.7	98.6	250.7	153.0	97.64	2.567		
9,100.0	7,045.0	9,161.6	7,160.0	56.1	55.5	117.32	-1,934.0	-1.4	250.6	149.6	101.02	2.481		
9,200.0	7,045.0	9,261.6	7,160.0	57.3	56.9	117.33	-1,935.4	-101.4	250.5	146.0	104.52	2.397		
9,300.0	7,045.0	9,361.6	7,160.0	58.7	58.5	117.34	-1,936.7	-201.4	250.4	142.3	108.14	2.316		
9,400.0	7,045.0	9,461.6	7,160.0	60.3	60.2	117.34	-1,938.1	-301.4	250.4	138.5	111.87	2.238		
9,500.0	7,045.0	9,561.6	7,160.0	62.0	62.1	117.35	-1,939.5	-401.4	250.3	134.6	115.70	2.163		
9,600.0	7,045.0	9,661.6	7,160.0	64.0	64.1	117.36	-1,940.8	-501.4	250.2	130.6	119.62	2.092		
9,700.0	7,045.0	9,761.6	7,160.0	66.0	66.2	117.37	-1,942.2	-601.4	250.1	126.5	123.61	2.023		
9,800.0	7,045.0	9,861.6	7,160.0	68.1	68.4	117.38	-1,943.5	-701.3	250.0	122.4	127.68	1.958		
9,900.0	7,045.0	9,961.6	7,160.0	70.4	70.6	117.39	-1,944.9	-801.3	250.0	118.2	131.81	1.896		
10,000.0	7,045.0	10,061.6	7,160.0	72.6	72.9	117.40	-1,946.3	-901.3	249.9	113.9	136.00	1.837		
10,100.0	7,045.0	10,161.6	7,160.0	75.0	75.3	117.41	-1,947.6	-1,001.3	249.8	109.6	140.24	1.781		
10,200.0	7,045.0	10,261.6	7,160.0	77.4	77.6	117.42	-1,949.0	-1,101.3	249.7	105.2	144.53	1.728		
10,300.0	7,045.0	10,361.6	7,160.0	79.8	80.1	117.43	-1,950.3	-1,201.3	249.7	100.8	148.87	1.677		

CC - Min centre to center distance or convergent point, SF - min separation factor, ES - min ellipse separation

<b>Company:</b>	Synergy Resources	<b>Local Co-ordinate Reference:</b>	Well SRC Weis 12-9NHZ
<b>Project:</b>	SEC.4-T4N-R68W	<b>TVD Reference:</b>	WELL @ 5077.0ft (Original Well Elev)
<b>Reference Site:</b>	SRC Kiehn Pad Sec.4-T4N-R68W	<b>MD Reference:</b>	WELL @ 5077.0ft (Original Well Elev)
<b>Site Error:</b>	0.0ft	<b>North Reference:</b>	True
<b>Reference Well:</b>	SRC Weis 12-9NHZ	<b>Survey Calculation Method:</b>	Minimum Curvature
<b>Well Error:</b>	0.0ft	<b>Output errors are at</b>	2.00 sigma
<b>Reference Wellbore</b>	Wellbore #1	<b>Database:</b>	Landmark
<b>Reference Design:</b>	Plan #1 (10-2-14)	<b>Offset TVD Reference:</b>	Offset Datum

<b>Offset Design</b> SRC Kiehn Pad Sec.4-T4N-R68W - SRC Weis A-9CHZ - Wellbore #1 - Plan #1 (10-2-14)												<b>Offset Site Error:</b>	0.0 ft
Survey Program: 0-MWD												<b>Offset Well Error:</b>	0.0 ft
Reference		Offset		Semi Major Axis			Distance						
Measured Depth (ft)	Vertical Depth (ft)	Measured Depth (ft)	Vertical Depth (ft)	Reference (ft)	Offset (ft)	Highside Toolface (°)	Offset Wellbore Centre +N/-S (ft)	+E/-W (ft)	Between Centres (ft)	Between Ellipses (ft)	Minimum Separation (ft)	Separation Factor	Warning
10,400.0	7,045.0	10,461.6	7,160.0	82.2	82.5	117.44	-1,951.7	-1,301.3	249.6	96.3	153.24	1.629	
10,500.0	7,045.0	10,561.6	7,160.0	84.7	85.0	117.45	-1,953.1	-1,401.3	249.5	91.9	157.65	1.583	
10,600.0	7,045.0	10,661.6	7,160.0	87.2	87.5	117.46	-1,954.4	-1,501.3	249.4	87.3	162.10	1.539	
10,700.0	7,045.0	10,761.6	7,160.0	89.7	90.0	117.46	-1,955.8	-1,601.3	249.4	82.8	166.58	1.497 Level 3	
10,800.0	7,045.0	10,861.6	7,160.0	92.3	92.6	117.47	-1,957.2	-1,701.2	249.3	78.2	171.09	1.457 Level 3	
10,900.0	7,045.0	10,961.6	7,160.0	94.9	95.1	117.48	-1,958.5	-1,801.2	249.2	73.6	175.62	1.419 Level 3	
11,000.0	7,045.0	11,061.6	7,160.0	97.4	97.7	117.49	-1,959.9	-1,901.2	249.1	68.9	180.18	1.383 Level 3	
11,100.0	7,045.0	11,161.6	7,160.0	100.0	100.3	117.50	-1,961.2	-2,001.2	249.0	64.3	184.76	1.348 Level 3	
11,200.0	7,045.0	11,261.6	7,160.0	102.6	102.9	117.51	-1,962.6	-2,101.2	249.0	59.6	189.36	1.315 Level 3	
11,300.0	7,045.0	11,361.6	7,160.0	105.2	105.5	117.52	-1,964.0	-2,201.2	248.9	54.9	193.98	1.283 Level 3	
11,400.0	7,045.0	11,461.6	7,160.0	107.9	108.1	117.53	-1,965.3	-2,301.2	248.8	50.2	198.62	1.253 Level 3	
11,500.0	7,045.0	11,561.6	7,160.0	110.5	110.7	117.54	-1,966.7	-2,401.2	248.7	45.5	203.27	1.224 Level 2	
11,600.0	7,045.0	11,661.6	7,160.0	113.1	113.4	117.55	-1,968.0	-2,501.2	248.7	40.7	207.94	1.196 Level 2	
11,700.0	7,045.0	11,761.6	7,160.0	115.8	116.0	117.56	-1,969.4	-2,601.2	248.6	35.9	212.63	1.169 Level 2	
11,800.0	7,045.0	11,861.6	7,160.0	118.4	118.7	117.57	-1,970.8	-2,701.2	248.5	31.2	217.33	1.143 Level 2	
11,900.0	7,045.0	11,961.6	7,160.0	121.1	121.3	117.58	-1,972.1	-2,801.1	248.4	26.4	222.04	1.119 Level 2	
12,000.0	7,045.0	12,061.6	7,160.0	123.8	124.0	117.59	-1,973.5	-2,901.1	248.3	21.6	226.76	1.095 Level 2	
12,100.0	7,045.0	12,161.6	7,160.0	126.4	126.7	117.59	-1,974.9	-3,001.1	248.3	16.8	231.49	1.072 Level 2	
12,139.9	7,045.0	12,201.4	7,160.0	127.5	127.7	117.60	-1,975.4	-3,041.0	248.2	14.9	233.38	1.064 Level 2	
12,150.7	7,045.0	12,209.7	7,160.0	127.8	127.9	117.60	-1,975.5	-3,049.3	248.2	14.4	233.83	1.062 Level 2, ES, SF	



Offset Design      SRC Kiehn Pad Sec.4-T4N-R68W - SRC Weis A-9NHZ - Wellbore #1 - Plan #1 (10-2-14)													Offset Site Error:      0.0 ft	
Survey Program: 0-MWD													Offset Well Error:      0.0 ft	
Reference		Offset		Semi Major Axis			Distance							
Measured Depth Depth (ft)	Vertical Depth (ft)	Measured Depth Depth (ft)	Vertical Depth (ft)	Reference  (ft)	Offset  (ft)	Highside Toolface (°)	Offset Wellbore Centre +N/-S (ft)	+E/-W (ft)	Between Centres (ft)	Between Ellipses (ft)	Minimum Separation (ft)	Separation Factor	Warning	
0.0	0.0	0.0	0.0	0.0	0.0	-90.93	-0.7	-44.9	44.9					
100.0	100.0	100.0	100.0	0.1	0.1	-90.93	-0.7	-44.9	44.9	44.7	0.22	199.721		
200.0	200.0	200.0	200.0	0.3	0.3	-90.93	-0.7	-44.9	44.9	44.2	0.67	66.574	CC	
200.0	200.0	200.0	200.0	0.3	0.3	-90.93	-0.7	-44.9	44.9	44.2	0.67	66.567		
300.0	300.0	299.9	299.9	0.6	0.5	-93.15	-2.5	-44.9	45.0	43.9	1.10	40.836		
400.0	400.0	399.8	399.7	0.8	0.7	-98.92	-7.0	-44.9	45.4	43.9	1.53	29.636		
500.0	500.0	499.9	499.7	1.0	1.0	-103.22	-10.5	-44.9	46.1	44.1	1.98	23.274		
600.0	600.0	600.1	599.9	1.2	1.2	-105.31	-12.3	-44.9	46.5	44.1	2.43	19.158		
700.0	700.0	700.2	700.0	1.5	1.4	-105.57	-12.5	-44.9	46.6	43.7	2.86	16.304	ES	
800.0	800.0	800.2	800.0	1.7	1.6	119.40	-12.5	-44.9	47.4	44.1	3.28	14.462		
900.0	899.8	900.0	899.8	1.9	1.8	124.56	-12.5	-44.9	50.2	46.5	3.69	13.617		
1,000.0	999.5	999.7	999.5	2.1	2.1	131.87	-12.5	-44.9	55.6	51.5	4.11	13.539		
1,100.0	1,098.7	1,098.9	1,098.7	2.3	2.3	139.83	-12.5	-44.9	64.4	59.9	4.54	14.191		
1,200.0	1,197.5	1,197.7	1,197.5	2.6	2.5	147.19	-12.5	-44.9	77.1	72.1	4.97	15.494		
1,300.0	1,295.6	1,298.9	1,298.6	2.9	2.7	153.20	-13.6	-43.6	92.2	86.8	5.40	17.084		
1,400.0	1,393.1	1,400.7	1,400.4	3.3	2.9	157.74	-16.9	-39.4	107.8	102.0	5.80	18.576		
1,500.0	1,489.6	1,503.3	1,502.5	3.8	3.1	161.36	-22.5	-32.4	123.7	117.5	6.22	19.896		
1,600.0	1,585.3	1,606.4	1,604.9	4.3	3.4	164.35	-30.5	-22.4	139.8	133.1	6.64	21.050		
1,700.0	1,679.8	1,710.2	1,707.3	4.9	3.7	166.91	-40.8	-9.5	156.0	148.9	7.07	22.051		
1,800.0	1,773.2	1,814.7	1,809.8	5.5	4.0	169.16	-53.5	6.4	172.2	164.7	7.52	22.910		
1,900.0	1,865.2	1,919.8	1,912.0	6.3	4.4	171.18	-68.7	25.3	188.4	180.4	7.97	23.637		
2,000.0	1,955.8	2,025.5	2,014.0	7.1	4.8	173.03	-86.3	47.3	204.6	196.1	8.44	24.234		
2,100.0	2,045.0	2,132.0	2,115.4	8.0	5.4	174.76	-106.4	72.3	220.5	211.6	8.95	24.634		
2,200.0	2,133.9	2,239.4	2,216.6	8.9	6.0	176.36	-129.1	100.6	233.7	224.2	9.56	24.440		
2,300.0	2,222.7	2,347.8	2,317.2	9.8	6.7	177.88	-154.3	132.1	243.3	233.1	10.20	23.844		
2,400.0	2,311.5	2,456.8	2,416.7	10.8	7.5	179.39	-182.0	166.8	249.3	238.4	10.89	22.902		
2,500.0	2,400.4	2,566.0	2,514.7	11.7	8.4	-179.04	-212.2	204.5	251.7	240.0	11.61	21.673		
2,600.0	2,489.2	2,666.6	2,603.9	12.7	9.3	-177.54	-241.2	240.7	252.0	239.6	12.36	20.386		
2,700.0	2,578.0	2,766.4	2,692.4	13.6	10.2	-176.05	-270.0	276.6	252.5	239.4	13.15	19.195		
2,800.0	2,666.9	2,866.1	2,780.9	14.6	11.2	-174.57	-298.8	312.6	253.2	239.2	14.00	18.085		
2,900.0	2,755.7	2,965.9	2,869.4	15.6	12.1	-173.10	-327.6	348.6	254.0	239.1	14.90	17.048		
3,000.0	2,844.5	3,065.7	2,957.9	16.5	13.1	-171.64	-356.4	384.5	255.1	239.2	15.86	16.078		
3,100.0	2,933.4	3,165.5	3,046.4	17.5	14.0	-170.19	-385.2	420.5	256.2	239.3	16.89	15.172		
3,200.0	3,022.2	3,265.3	3,134.9	18.5	15.0	-168.75	-414.0	456.4	257.6	239.6	17.98	14.326		
3,300.0	3,111.0	3,365.1	3,223.5	19.5	15.9	-167.33	-442.8	492.4	259.1	239.9	19.14	13.539		
3,400.0	3,199.9	3,464.8	3,312.0	20.4	16.9	-165.93	-471.6	528.3	260.7	240.4	20.36	12.807		
3,500.0	3,288.7	3,564.6	3,400.5	21.4	17.9	-164.55	-500.4	564.3	262.5	240.9	21.65	12.128		
3,600.0	3,377.6	3,664.4	3,489.0	22.4	18.9	-163.19	-529.2	600.2	264.5	241.5	23.00	11.499		
3,700.0	3,466.4	3,764.2	3,577.5	23.3	19.8	-161.84	-558.0	636.2	266.6	242.2	24.42	10.918		
3,800.0	3,555.2	3,864.0	3,666.0	24.3	20.8	-160.52	-586.8	672.1	268.9	243.0	25.90	10.382		
3,900.0	3,644.1	3,963.8	3,754.5	25.3	21.8	-159.22	-615.6	708.1	271.3	243.8	27.44	9.887		
4,000.0	3,732.9	4,063.5	3,843.1	26.3	22.8	-157.95	-644.4	744.1	273.8	244.8	29.03	9.432		
4,100.0	3,821.7	4,163.3	3,931.6	27.3	23.8	-156.70	-673.2	780.0	276.5	245.8	30.68	9.013		
4,200.0	3,910.6	4,263.1	4,020.1	28.2	24.8	-155.47	-702.0	816.0	279.3	246.9	32.37	8.627		
4,300.0	3,999.4	4,362.9	4,108.6	29.2	25.8	-154.27	-730.8	851.9	282.2	248.1	34.12	8.272		
4,400.0	4,088.2	4,462.7	4,197.1	30.2	26.8	-153.09	-759.6	887.9	285.3	249.4	35.90	7.945		
4,500.0	4,177.1	4,562.5	4,285.6	31.2	27.7	-151.94	-788.4	923.8	288.4	250.7	37.73	7.644		
4,600.0	4,265.9	4,662.2	4,374.1	32.2	28.7	-150.82	-817.2	959.8	291.7	252.1	39.59	7.367		
4,700.0	4,354.7	4,762.0	4,462.7	33.1	29.7	-149.72	-845.9	995.7	295.1	253.6	41.49	7.112		
4,800.0	4,443.6	4,861.8	4,551.2	34.1	30.7	-148.64	-874.7	1,031.7	298.6	255.2	43.42	6.876		
4,900.0	4,532.4	4,961.6	4,639.7	35.1	31.7	-147.59	-903.5	1,067.6	302.2	256.8	45.38	6.659		
5,000.0	4,621.2	5,061.4	4,728.2	36.1	32.7	-146.56	-932.3	1,103.6	305.9	258.5	47.37	6.457		

COMPASS 2003.21 Build 46

<b>Company:</b>	Synergy Resources	<b>Local Co-ordinate Reference:</b>	Well SRC Weis 12-9NHZ
<b>Project:</b>	SEC.4-T4N-R68W	<b>TVD Reference:</b>	WELL @ 5077.0ft (Original Well Elev)
<b>Reference Site:</b>	SRC Kiehn Pad Sec.4-T4N-R68W	<b>MD Reference:</b>	WELL @ 5077.0ft (Original Well Elev)
<b>Site Error:</b>	0.0ft	<b>North Reference:</b>	True
<b>Reference Well:</b>	SRC Weis 12-9NHZ	<b>Survey Calculation Method:</b>	Minimum Curvature
<b>Well Error:</b>	0.0ft	<b>Output errors are at</b>	2.00 sigma
<b>Reference Wellbore</b>	Wellbore #1	<b>Database:</b>	Landmark
<b>Reference Design:</b>	Plan #1 (10-2-14)	<b>Offset TVD Reference:</b>	Offset Datum

Offset Design												Offset Site Error:	0.0 ft
Survey Program: 0-MWDD												Offset Well Error:	0.0 ft
Reference		Offset		Semi Major Axis			Distance						Warning
Measured Depth (ft)	Vertical Depth (ft)	Measured Depth (ft)	Vertical Depth (ft)	Reference (ft)	Offset (ft)	Highside Toolface (°)	Offset Wellbore Centre +N/-S (ft)	+E/-W (ft)	Between Centres (ft)	Between Ellipses (ft)	Minimum Separation (ft)	Separation Factor	
5,100.0	4,710.1	5,161.2	4,816.7	37.1	33.7	-145.56	-961.1	1,139.6	309.7	260.3	49.38	6.271	
5,200.0	4,798.9	5,260.9	4,905.2	38.0	34.7	-144.59	-989.9	1,175.5	313.6	262.2	51.41	6.099	
5,300.0	4,887.8	5,360.7	4,993.7	39.0	35.7	-143.64	-1,018.7	1,211.5	317.5	264.1	53.46	5.939	
5,400.0	4,976.6	5,460.5	5,082.2	40.0	36.7	-142.71	-1,047.5	1,247.4	321.6	266.1	55.53	5.791	
5,500.0	5,065.4	5,560.3	5,170.8	41.0	37.7	-141.80	-1,076.3	1,283.4	325.7	268.1	57.62	5.653	
5,600.0	5,154.3	5,660.1	5,259.3	42.0	38.7	-140.92	-1,105.1	1,319.3	330.0	270.3	59.72	5.525	
5,700.0	5,243.1	5,759.9	5,347.8	42.9	39.7	-140.06	-1,133.9	1,355.3	334.3	272.4	61.83	5.406	
5,800.0	5,331.9	5,859.6	5,436.3	43.9	40.7	-139.22	-1,162.7	1,391.2	338.6	274.7	63.96	5.295	
5,900.0	5,420.8	5,959.4	5,524.8	44.9	41.7	-138.41	-1,191.5	1,427.2	343.1	277.0	66.09	5.191	
6,000.0	5,509.6	6,059.2	5,613.3	45.9	42.7	-137.61	-1,220.3	1,463.2	347.6	279.4	68.23	5.094	
6,100.0	5,598.4	6,159.0	5,701.8	46.9	43.7	-136.84	-1,249.1	1,499.1	352.2	281.8	70.38	5.004	
6,200.0	5,687.3	6,258.8	5,790.4	47.8	44.7	-136.08	-1,277.9	1,535.1	356.8	284.3	72.54	4.919	
6,300.0	5,776.1	6,358.6	5,878.9	48.8	45.7	-135.35	-1,306.7	1,571.0	361.5	286.8	74.70	4.840	
6,400.0	5,864.9	6,458.3	5,967.4	49.8	46.7	-134.63	-1,335.5	1,607.0	366.3	289.4	76.86	4.765	
6,500.0	5,953.8	6,558.1	6,055.9	50.8	47.7	-133.93	-1,364.3	1,642.9	371.1	292.0	79.03	4.695	
6,600.0	6,042.6	6,659.5	6,146.0	51.8	48.6	-133.31	-1,393.6	1,679.0	375.9	294.8	81.13	4.633	
6,700.0	6,131.4	6,765.6	6,243.4	52.8	49.3	-134.36	-1,425.5	1,706.1	379.5	298.0	81.49	4.657	
6,800.0	6,220.9	6,868.2	6,340.1	53.6	49.8	-145.14	-1,457.3	1,717.6	382.4	302.8	79.62	4.803	
6,900.0	6,313.0	6,967.7	6,434.5	54.2	50.0	-165.79	-1,488.6	1,714.8	386.3	309.3	76.97	5.019	
7,000.0	6,406.3	7,064.5	6,525.0	54.6	50.2	170.45	-1,518.7	1,698.8	391.2	317.0	74.21	5.272	
7,100.0	6,499.0	7,159.1	6,610.6	54.9	50.2	148.51	-1,547.4	1,671.0	397.0	325.4	71.62	5.543	
7,200.0	6,589.4	7,250.0	6,688.9	55.1	50.1	131.62	-1,573.9	1,633.2	403.4	333.9	69.47	5.806	
7,300.0	6,675.5	7,342.1	6,762.9	55.1	50.0	119.37	-1,599.0	1,584.6	410.0	342.2	67.81	6.046	
7,400.0	6,755.9	7,431.1	6,828.2	55.0	49.8	110.56	-1,621.4	1,528.5	416.7	349.8	66.83	6.234	
7,500.0	6,828.8	7,518.7	6,885.5	54.9	49.7	104.08	-1,641.2	1,465.3	423.1	356.5	66.57	6.355	
7,600.0	6,893.0	7,605.2	6,934.4	54.8	49.5	99.25	-1,658.3	1,396.1	428.9	361.9	67.06	6.396	
7,700.0	6,947.0	7,690.7	6,974.6	54.6	49.3	95.67	-1,672.6	1,322.1	434.0	365.7	68.35	6.350	
7,800.0	6,990.0	7,775.5	7,006.0	54.3	49.2	93.08	-1,684.1	1,244.1	438.2	367.8	70.39	6.225	
7,900.0	7,021.0	7,859.8	7,028.2	54.1	49.1	91.32	-1,692.5	1,163.3	441.2	368.1	73.09	6.037	
8,000.0	7,039.4	7,943.7	7,041.2	53.9	49.0	90.31	-1,697.9	1,080.6	443.0	366.8	76.28	5.808	
8,100.0	7,045.0	8,029.0	7,045.0	53.7	49.0	90.00	-1,700.4	995.5	443.6	364.0	79.59	5.573	
8,200.0	7,045.0	8,129.0	7,045.0	53.5	49.0	90.00	-1,701.7	895.5	443.5	362.5	81.01	5.475	
8,300.0	7,045.0	8,229.0	7,045.0	53.4	49.1	90.00	-1,703.1	795.5	443.4	360.6	82.77	5.357	
8,400.0	7,045.0	8,329.0	7,045.0	53.3	49.4	90.00	-1,704.4	695.5	443.3	358.5	84.86	5.224	
8,500.0	7,045.0	8,429.0	7,045.0	53.3	49.8	90.00	-1,705.8	595.5	443.2	356.0	87.26	5.079	
8,600.0	7,045.0	8,529.0	7,045.0	53.4	50.3	90.00	-1,707.2	495.6	443.1	353.2	89.95	4.927	
8,700.0	7,045.0	8,629.0	7,045.0	53.6	51.0	90.00	-1,708.5	395.6	443.1	350.2	92.90	4.769	
8,800.0	7,045.0	8,729.0	7,045.0	54.0	51.9	90.00	-1,709.9	295.6	443.0	346.9	96.08	4.610	
8,900.0	7,045.0	8,829.0	7,045.0	54.5	53.0	90.00	-1,711.2	195.6	442.9	343.4	99.48	4.452	
9,000.0	7,045.0	8,929.0	7,045.0	55.2	54.3	90.00	-1,712.6	95.6	442.8	339.7	103.08	4.296	
9,100.0	7,045.0	9,029.0	7,045.0	56.1	55.7	90.00	-1,714.0	-4.4	442.7	335.9	106.84	4.143	
9,200.0	7,045.0	9,129.0	7,045.0	57.3	57.3	90.00	-1,715.3	-104.4	442.6	331.9	110.77	3.996	
9,300.0	7,045.0	9,229.0	7,045.0	58.7	59.0	90.00	-1,716.7	-204.4	442.5	327.7	114.83	3.854	
9,400.0	7,045.0	9,329.0	7,045.0	60.3	60.9	90.00	-1,718.1	-304.4	442.4	323.4	119.02	3.717	
9,500.0	7,045.0	9,429.0	7,045.0	62.0	62.8	90.00	-1,719.4	-404.4	442.4	319.0	123.32	3.587	
9,600.0	7,045.0	9,529.0	7,045.0	64.0	64.9	90.00	-1,720.8	-504.4	442.3	314.5	127.73	3.463	
9,700.0	7,045.0	9,629.0	7,045.0	66.0	67.0	90.00	-1,722.1	-604.3	442.2	310.0	132.22	3.344	
9,800.0	7,045.0	9,729.0	7,045.0	68.1	69.2	90.00	-1,723.5	-704.3	442.1	305.3	136.80	3.232	
9,900.0	7,045.0	9,829.0	7,045.0	70.4	71.5	90.00	-1,724.9	-804.3	442.0	300.6	141.45	3.125	
10,000.0	7,045.0	9,929.0	7,045.0	72.6	73.8	90.00	-1,726.2	-904.3	441.9	295.8	146.17	3.023	
10,100.0	7,045.0	10,029.0	7,045.0	75.0	76.1	90.00	-1,727.6	-1,004.3	441.8	290.9	150.95	2.927	
10,200.0	7,045.0	10,129.0	7,045.0	77.4	78.5	90.00	-1,728.9	-1,104.3	441.7	286.0	155.78	2.836	

CC - Min centre to center distance or convergent point, SF - min separation factor, ES - min ellipse separation



<b>Company:</b>	Synergy Resources	<b>Local Co-ordinate Reference:</b>	Well SRC Weis 12-9NHZ
<b>Project:</b>	SEC.4-T4N-R68W	<b>TVD Reference:</b>	WELL @ 5077.0ft (Original Well Elev)
<b>Reference Site:</b>	SRC Kiehn Pad Sec.4-T4N-R68W	<b>MD Reference:</b>	WELL @ 5077.0ft (Original Well Elev)
<b>Site Error:</b>	0.0ft	<b>North Reference:</b>	True
<b>Reference Well:</b>	SRC Weis 12-9NHZ	<b>Survey Calculation Method:</b>	Minimum Curvature
<b>Well Error:</b>	0.0ft	<b>Output errors are at</b>	2.00 sigma
<b>Reference Wellbore</b>	Wellbore #1	<b>Database:</b>	Landmark
<b>Reference Design:</b>	Plan #1 (10-2-14)	<b>Offset TVD Reference:</b>	Offset Datum

Offset Design												Offset Site Error:	0.0 ft
SRC Kiehn Pad Sec.4-T4N-R68W - SRC Weis A-9NHZ - Wellbore #1 - Plan #1 (10-2-14)												Offset Well Error:	0.0 ft
Survey Program: 0-MWD													
Reference		Offset		Semi Major Axis			Distance						
Measured Depth (ft)	Vertical Depth (ft)	Measured Depth (ft)	Vertical Depth (ft)	Reference (ft)	Offset (ft)	Highside Toolface (°)	Offset Wellbore Centre +N/-S (ft)	+E/-W (ft)	Between Centres (ft)	Between Ellipses (ft)	Minimum Separation (ft)	Separation Factor	Warning
10,300.0	7,045.0	10,229.0	7,045.0	79.8	80.9	90.00	-1,730.3	-1,204.3	441.7	281.0	160.67	2.749	
10,400.0	7,045.0	10,329.0	7,045.0	82.2	83.4	90.00	-1,731.7	-1,304.3	441.6	276.0	165.60	2.667	
10,500.0	7,045.0	10,429.0	7,045.0	84.7	85.9	90.00	-1,733.0	-1,404.3	441.5	270.9	170.57	2.588	
10,600.0	7,045.0	10,529.0	7,045.0	87.2	88.4	90.00	-1,734.4	-1,504.3	441.4	265.8	175.58	2.514	
10,700.0	7,045.0	10,629.0	7,045.0	89.7	90.9	90.00	-1,735.8	-1,604.3	441.3	260.7	180.63	2.443	
10,800.0	7,045.0	10,729.0	7,045.0	92.3	93.4	90.00	-1,737.1	-1,704.2	441.2	255.5	185.71	2.376	
10,900.0	7,045.0	10,829.0	7,045.0	94.9	96.0	90.00	-1,738.5	-1,804.2	441.1	250.3	190.81	2.312	
11,000.0	7,045.0	10,929.0	7,045.0	97.4	98.5	90.00	-1,739.8	-1,904.2	441.0	245.1	195.95	2.251	
11,100.0	7,045.0	11,029.0	7,045.0	100.0	101.1	90.00	-1,741.2	-2,004.2	441.0	239.9	201.11	2.193	
11,200.0	7,045.0	11,129.0	7,045.0	102.6	103.7	90.00	-1,742.6	-2,104.2	440.9	234.6	206.29	2.137	
11,300.0	7,045.0	11,229.0	7,045.0	105.2	106.3	90.00	-1,743.9	-2,204.2	440.8	229.3	211.50	2.084	
11,400.0	7,045.0	11,329.0	7,045.0	107.9	108.9	90.00	-1,745.3	-2,304.2	440.7	224.0	216.73	2.033	
11,500.0	7,045.0	11,429.0	7,045.0	110.5	111.6	90.00	-1,746.6	-2,404.2	440.6	218.6	221.97	1.985	
11,600.0	7,045.0	11,529.0	7,045.0	113.1	114.2	90.00	-1,748.0	-2,504.2	440.5	213.3	227.23	1.939	
11,700.0	7,045.0	11,629.0	7,045.0	115.8	116.8	90.00	-1,749.4	-2,604.2	440.4	207.9	232.51	1.894	
11,800.0	7,045.0	11,729.0	7,045.0	118.4	119.5	90.00	-1,750.7	-2,704.2	440.3	202.5	237.80	1.852	
11,900.0	7,045.0	11,829.0	7,045.0	121.1	122.1	90.00	-1,752.1	-2,804.1	440.3	197.2	243.11	1.811	
12,000.0	7,045.0	11,929.0	7,045.0	123.8	124.8	90.00	-1,753.5	-2,904.1	440.2	191.7	248.43	1.772	
12,100.0	7,045.0	12,029.0	7,045.0	126.4	127.5	90.00	-1,754.8	-3,004.1	440.1	186.3	253.76	1.734	
12,139.8	7,045.0	12,068.8	7,045.0	127.5	128.5	90.00	-1,755.4	-3,043.9	440.1	184.2	255.89	1.720	
12,150.7	7,045.0	12,075.6	7,045.0	127.8	128.7	90.00	-1,755.4	-3,050.7	440.1	183.7	256.36	1.717 SF	

<b>Company:</b>	Synergy Resources	<b>Local Co-ordinate Reference:</b>	Well SRC Weis 12-9NHZ
<b>Project:</b>	SEC.4-T4N-R68W	<b>TVD Reference:</b>	WELL @ 5077.0ft (Original Well Elev)
<b>Reference Site:</b>	SRC Kiehn Pad Sec.4-T4N-R68W	<b>MD Reference:</b>	WELL @ 5077.0ft (Original Well Elev)
<b>Site Error:</b>	0.0ft	<b>North Reference:</b>	True
<b>Reference Well:</b>	SRC Weis 12-9NHZ	<b>Survey Calculation Method:</b>	Minimum Curvature
<b>Well Error:</b>	0.0ft	<b>Output errors are at</b>	2.00 sigma
<b>Reference Wellbore</b>	Wellbore #1	<b>Database:</b>	Landmark
<b>Reference Design:</b>	Plan #1 (10-2-14)	<b>Offset TVD Reference:</b>	Offset Datum

Offset Design													Offset Site Error:	0.0 ft
Survey Program: 0-MWD													Offset Well Error:	0.0 ft
Reference		Offset		Semi Major Axis			Distance							Warning
Measured Depth (ft)	Vertical Depth (ft)	Measured Depth (ft)	Vertical Depth (ft)	Reference (ft)	Offset (ft)	Highside Toolface (°)	Offset Wellbore Centre +N/-S (ft)	+E/-W (ft)	Between Centres (ft)	Between Ellipses (ft)	Minimum Separation (ft)	Separation Factor		
0.0	0.0	0.0	0.0	0.0	0.0	89.08	0.7	45.2	45.2					
100.0	100.0	100.0	100.0	0.1	0.1	89.08	0.7	45.2	45.2	44.9	0.22	200.962		
200.0	200.0	200.0	200.0	0.3	0.3	89.08	0.7	45.2	45.2	44.5	0.67	66.987 CC, ES		
300.0	300.0	299.0	299.0	0.6	0.5	90.80	-0.6	46.2	46.2	45.1	1.10	41.889		
400.0	400.0	397.9	397.7	0.8	0.8	95.51	-4.8	49.2	49.5	48.0	1.54	32.207		
500.0	500.0	496.2	495.7	1.0	1.0	102.01	-11.5	54.3	55.7	53.7	1.99	28.030		
600.0	600.0	593.9	592.6	1.2	1.3	108.88	-21.0	61.3	65.2	62.8	2.44	26.685		
700.0	700.0	690.6	688.2	1.5	1.6	115.11	-32.9	70.2	78.4	75.5	2.91	26.914		
800.0	800.0	786.5	782.4	1.7	2.0	-16.79	-47.3	80.9	93.7	90.3	3.39	27.670		
900.0	899.8	881.9	875.5	1.9	2.4	-13.06	-64.1	93.4	109.2	105.4	3.82	28.599		
1,000.0	999.5	976.8	967.4	2.1	2.9	-10.13	-83.3	107.6	124.8	120.6	4.27	29.265		
1,100.0	1,098.7	1,071.2	1,057.9	2.3	3.4	-7.73	-104.7	123.6	140.4	135.7	4.73	29.721		
1,200.0	1,197.5	1,165.1	1,147.0	2.6	4.0	-5.71	-128.5	141.3	156.0	150.8	5.20	30.007		
1,300.0	1,295.6	1,258.5	1,234.6	2.9	4.6	-3.96	-154.4	160.6	171.5	165.8	5.69	30.137		
1,400.0	1,393.1	1,351.5	1,320.7	3.3	5.3	-2.41	-182.5	181.4	186.8	180.7	6.18	30.217		
1,500.0	1,489.6	1,444.0	1,405.3	3.8	6.1	-1.01	-212.6	203.9	202.0	195.3	6.71	30.130		
1,600.0	1,585.3	1,536.0	1,488.1	4.3	6.9	0.26	-244.7	227.8	217.1	209.8	7.24	29.970		
1,700.0	1,679.8	1,631.8	1,573.2	4.9	7.8	1.48	-280.0	254.0	231.4	223.6	7.81	29.620		
1,800.0	1,773.2	1,731.1	1,661.2	5.5	8.7	2.63	-316.8	281.4	242.7	234.2	8.41	28.862		
1,900.0	1,865.2	1,830.6	1,749.5	6.3	9.7	3.73	-353.7	308.9	250.5	241.5	9.02	27.765		
2,000.0	1,955.8	1,930.4	1,838.0	7.1	10.6	4.83	-390.7	336.4	255.0	245.4	9.66	26.396		
2,100.0	2,045.0	2,030.3	1,926.6	8.0	11.6	5.97	-427.7	363.9	256.4	246.0	10.35	24.770		
2,200.0	2,133.9	2,130.1	2,015.2	8.9	12.5	7.12	-464.7	391.5	257.0	245.9	11.11	23.130		
2,300.0	2,222.7	2,230.0	2,103.7	9.8	13.5	8.27	-501.8	419.0	257.8	245.9	11.90	21.655		
2,400.0	2,311.5	2,329.9	2,192.3	10.8	14.5	9.40	-538.8	446.5	258.6	245.9	12.73	20.320		
2,500.0	2,400.4	2,429.7	2,280.9	11.7	15.4	10.53	-575.8	474.1	259.6	246.0	13.59	19.106		
2,600.0	2,489.2	2,529.6	2,369.4	12.7	16.4	11.65	-612.8	501.6	260.6	246.1	14.48	17.997		
2,700.0	2,578.0	2,629.5	2,458.0	13.6	17.4	12.77	-649.8	529.1	261.8	246.4	15.42	16.980		
2,800.0	2,666.9	2,729.3	2,546.6	14.6	18.3	13.87	-686.8	556.7	263.0	246.6	16.39	16.046		
2,900.0	2,755.7	2,829.2	2,635.2	15.6	19.3	14.96	-723.8	584.2	264.4	247.0	17.41	15.185		
3,000.0	2,844.5	2,929.1	2,723.7	16.5	20.3	16.04	-760.9	611.7	265.8	247.4	18.47	14.390		
3,100.0	2,933.4	3,028.9	2,812.3	17.5	21.3	17.10	-797.9	639.3	267.4	247.8	19.58	13.656		
3,200.0	3,022.2	3,128.8	2,900.9	18.5	22.2	18.16	-834.9	666.8	269.0	248.3	20.73	12.977		
3,300.0	3,111.0	3,228.7	2,989.4	19.5	23.2	19.20	-871.9	694.4	270.7	248.8	21.92	12.349		
3,400.0	3,199.9	3,328.5	3,078.0	20.4	24.2	20.23	-908.9	721.9	272.5	249.4	23.16	11.766		
3,500.0	3,288.7	3,428.4	3,166.6	21.4	25.1	21.24	-945.9	749.4	274.4	250.0	24.44	11.227		
3,600.0	3,377.6	3,528.2	3,255.1	22.4	26.1	22.24	-982.9	777.0	276.4	250.6	25.77	10.727		
3,700.0	3,466.4	3,628.1	3,343.7	23.3	27.1	23.23	-1,020.0	804.5	278.5	251.3	27.13	10.263		
3,800.0	3,555.2	3,728.0	3,432.3	24.3	28.1	24.20	-1,057.0	832.0	280.6	252.1	28.54	9.832		
3,900.0	3,644.1	3,827.8	3,520.8	25.3	29.0	25.15	-1,094.0	859.6	282.8	252.8	29.99	9.432		
4,000.0	3,732.9	3,927.7	3,609.4	26.3	30.0	26.09	-1,131.0	887.1	285.1	253.7	31.47	9.060		
4,100.0	3,821.7	4,027.6	3,698.0	27.3	31.0	27.02	-1,168.0	914.7	287.5	254.5	32.99	8.714		
4,200.0	3,910.6	4,127.4	3,786.6	28.2	32.0	27.93	-1,205.0	942.2	290.0	255.4	34.55	8.392		
4,300.0	3,999.4	4,227.3	3,875.1	29.2	32.9	28.82	-1,242.0	969.7	292.5	256.3	36.14	8.093		
4,400.0	4,088.2	4,327.2	3,963.7	30.2	33.9	29.70	-1,279.1	997.3	295.1	257.3	37.76	7.814		
4,500.0	4,177.1	4,427.0	4,052.3	31.2	34.9	30.57	-1,316.1	1,024.8	297.7	258.3	39.42	7.554		
4,600.0	4,265.9	4,526.9	4,140.8	32.2	35.9	31.41	-1,353.1	1,052.3	300.5	259.4	41.10	7.311		
4,700.0	4,354.7	4,626.8	4,229.4	33.1	36.8	32.25	-1,390.1	1,079.9	303.3	260.5	42.81	7.084		
4,800.0	4,443.6	4,726.6	4,318.0	34.1	37.8	33.06	-1,427.1	1,107.4	306.1	261.6	44.55	6.872		
4,900.0	4,532.4	4,826.5	4,406.5	35.1	38.8	33.87	-1,464.1	1,135.0	309.0	262.7	46.31	6.673		
5,000.0	4,621.2	4,926.4	4,495.1	36.1	39.8	34.65	-1,501.1	1,162.5	312.0	263.9	48.10	6.488		
5,100.0	4,710.1	5,026.2	4,583.7	37.1	40.7	35.42	-1,538.2	1,190.0	315.1	265.1	49.90	6.313		

CC - Min centre to center distance or convergent point, SF - min separation factor, ES - min ellipse separation

<b>Company:</b>	Synergy Resources	<b>Local Co-ordinate Reference:</b>	Well SRC Weis 12-9NHZ
<b>Project:</b>	SEC.4-T4N-R68W	<b>TVD Reference:</b>	WELL @ 5077.0ft (Original Well Elev)
<b>Reference Site:</b>	SRC Kiehn Pad Sec.4-T4N-R68W	<b>MD Reference:</b>	WELL @ 5077.0ft (Original Well Elev)
<b>Site Error:</b>	0.0ft	<b>North Reference:</b>	True
<b>Reference Well:</b>	SRC Weis 12-9NHZ	<b>Survey Calculation Method:</b>	Minimum Curvature
<b>Well Error:</b>	0.0ft	<b>Output errors are at</b>	2.00 sigma
<b>Reference Wellbore</b>	Wellbore #1	<b>Database:</b>	Landmark
<b>Reference Design:</b>	Plan #1 (10-2-14)	<b>Offset TVD Reference:</b>	Offset Datum

Offset Design												Offset Site Error:	0.0 ft
Survey Program: 0-MWD												Offset Well Error:	0.0 ft
Reference		Offset		Semi Major Axis			Distance						Warning
Measured Depth (ft)	Vertical Depth (ft)	Measured Depth (ft)	Vertical Depth (ft)	Reference (ft)	Offset (ft)	Highside Toolface (°)	Offset Wellbore Centre +N/-S (ft)	+E/-W (ft)	Between Centres (ft)	Between Ellipses (ft)	Minimum Separation (ft)	Separation Factor	
5,200.0	4,798.9	5,126.1	4,672.3	38.0	41.7	36.18	-1,575.2	1,217.6	318.1	266.4	51.73	6.150	
5,300.0	4,887.8	5,225.9	4,760.8	39.0	42.7	36.92	-1,612.2	1,245.1	321.3	267.7	53.58	5.997	
5,400.0	4,976.6	5,325.8	4,849.4	40.0	43.6	37.65	-1,649.2	1,272.6	324.5	269.0	55.44	5.853	
5,500.0	5,065.4	5,425.7	4,938.0	41.0	44.6	38.37	-1,686.2	1,300.2	327.7	270.4	57.33	5.717	
5,600.0	5,154.3	5,525.5	5,026.5	42.0	45.6	39.07	-1,723.2	1,327.7	331.0	271.8	59.23	5.589	
5,700.0	5,243.1	5,625.4	5,115.1	42.9	46.6	39.75	-1,760.2	1,355.3	334.4	273.2	61.14	5.469	
5,800.0	5,331.9	5,725.3	5,203.7	43.9	47.5	40.42	-1,797.3	1,382.8	337.8	274.7	63.07	5.356	
5,900.0	5,420.8	5,825.1	5,292.2	44.9	48.5	41.08	-1,834.3	1,410.3	341.2	276.2	65.01	5.249	
6,000.0	5,509.6	5,925.0	5,380.8	45.9	49.5	41.73	-1,871.3	1,437.9	344.7	277.7	66.96	5.148	
6,100.0	5,598.4	6,024.9	5,469.4	46.9	50.5	42.36	-1,908.3	1,465.4	348.2	279.3	68.93	5.052	
6,200.0	5,687.3	6,124.7	5,557.9	47.8	51.4	42.98	-1,945.3	1,492.9	351.8	280.9	70.90	4.962	
6,300.0	5,776.1	6,224.6	5,646.5	48.8	52.4	43.59	-1,982.3	1,520.5	355.4	282.5	72.89	4.876	
6,400.0	5,864.9	6,324.5	5,735.1	49.8	53.4	44.18	-2,019.3	1,548.0	359.1	284.2	74.88	4.795	
6,500.0	5,953.8	6,424.3	5,823.7	50.8	54.4	44.76	-2,056.4	1,575.6	362.7	285.9	76.88	4.718	
6,600.0	6,042.6	6,524.2	5,912.2	51.8	55.3	45.33	-2,093.4	1,603.1	366.5	287.6	78.89	4.645	
6,700.0	6,131.4	6,624.0	6,000.8	52.8	56.3	45.89	-2,130.4	1,630.6	370.2	289.3	80.91	4.576	
6,800.0	6,220.9	6,723.9	6,089.4	53.6	57.3	46.46	-2,167.4	1,658.2	373.7	291.1	82.60	4.524	
6,900.0	6,313.0	6,823.2	6,177.4	54.2	58.3	47.03	-2,204.2	1,685.5	377.6	293.9	84.30	4.476	
7,000.0	6,406.3	6,918.5	6,266.2	54.6	59.1	47.60	-2,239.8	1,709.2	377.6	298.4	79.22	4.766	
7,100.0	6,499.0	7,014.9	6,350.7	54.9	59.7	48.17	-2,276.9	1,721.2	380.7	304.5	76.23	4.994	
7,200.0	6,589.4	7,114.5	6,442.3	55.1	60.1	48.74	-2,315.6	1,720.0	385.2	311.8	73.36	5.251	
7,300.0	6,675.5	7,217.6	6,536.1	55.1	60.5	49.31	-2,355.4	1,704.3	390.9	320.1	70.85	5.518	
7,400.0	6,755.9	7,324.6	6,630.0	55.0	60.7	49.88	-2,395.5	1,672.7	397.7	328.8	68.88	5.773	
7,500.0	6,828.8	7,435.7	6,721.7	54.9	60.7	50.45	-2,434.9	1,624.3	405.0	337.5	67.58	5.994	
7,600.0	6,893.0	7,551.0	6,808.3	54.8	60.7	51.02	-2,472.4	1,558.3	412.6	345.6	67.05	6.153	
7,700.0	6,947.0	7,670.5	6,886.5	54.6	60.6	51.59	-2,506.6	1,474.8	419.9	352.4	67.43	6.226	
7,800.0	6,990.0	7,793.9	6,952.6	54.3	60.4	52.16	-2,535.9	1,375.0	426.3	357.5	68.81	6.195	
7,900.0	7,021.0	7,920.7	7,003.1	54.1	60.1	52.73	-2,558.8	1,261.2	431.4	360.2	71.21	6.058	
8,000.0	7,039.4	8,050.0	7,034.6	53.9	59.8	53.30	-2,573.8	1,136.8	434.8	360.3	74.50	5.836	
8,100.0	7,045.0	8,180.1	7,045.0	53.7	59.5	53.87	-2,580.0	1,007.5	436.2	357.9	78.22	5.576	
8,200.0	7,045.0	8,280.1	7,045.0	53.5	59.2	54.44	-2,581.4	907.5	436.2	356.7	79.54	5.485	
8,300.0	7,045.0	8,380.1	7,045.0	53.4	58.9	55.01	-2,582.7	807.5	436.3	355.1	81.21	5.373	
8,400.0	7,045.0	8,480.1	7,045.0	53.3	58.7	55.58	-2,584.1	707.5	436.4	353.2	83.22	5.244	
8,500.0	7,045.0	8,580.1	7,045.0	53.3	58.5	56.15	-2,585.5	607.5	436.5	350.9	85.56	5.102	
8,600.0	7,045.0	8,680.1	7,045.0	53.4	58.4	56.72	-2,586.8	507.5	436.6	348.4	88.19	4.951	
8,700.0	7,045.0	8,780.1	7,045.0	53.6	58.3	57.29	-2,588.2	407.5	436.7	345.6	91.09	4.794	
8,800.0	7,045.0	8,880.1	7,045.0	54.0	58.2	57.86	-2,589.5	307.5	436.8	342.5	94.23	4.635	
8,900.0	7,045.0	8,980.1	7,045.0	54.5	58.3	58.43	-2,590.9	207.6	436.8	339.3	97.60	4.476	
9,000.0	7,045.0	9,080.1	7,045.0	55.2	58.4	59.00	-2,592.3	107.6	436.9	335.8	101.16	4.319	
9,100.0	7,045.0	9,180.1	7,045.0	56.1	58.6	59.57	-2,593.6	7.6	437.0	332.1	104.91	4.166	
9,200.0	7,045.0	9,280.1	7,045.0	57.3	59.0	60.14	-2,595.0	-92.4	437.1	328.3	108.81	4.017	
9,300.0	7,045.0	9,380.1	7,045.0	58.7	59.6	60.71	-2,596.3	-192.4	437.2	324.3	112.86	3.874	
9,400.0	7,045.0	9,480.1	7,045.0	60.3	60.6	61.28	-2,597.7	-292.4	437.3	320.2	117.03	3.736	
9,500.0	7,045.0	9,580.1	7,045.0	62.0	61.9	61.85	-2,599.1	-392.4	437.4	316.0	121.33	3.605	
9,600.0	7,045.0	9,680.1	7,045.0	64.0	63.4	62.42	-2,600.4	-492.4	437.5	311.7	125.72	3.480	
9,700.0	7,045.0	9,780.1	7,045.0	66.0	65.3	63.00	-2,601.8	-592.4	437.5	307.3	130.21	3.360	
9,800.0	7,045.0	9,880.1	7,045.0	68.1	67.3	63.57	-2,603.1	-692.4	437.6	302.8	134.79	3.247	
9,900.0	7,045.0	9,980.1	7,045.0	70.4	69.5	64.14	-2,604.5	-792.4	437.7	298.3	139.43	3.139	
10,000.0	7,045.0	10,080.1	7,045.0	72.6	71.7	64.71	-2,605.9	-892.3	437.8	293.7	144.15	3.037	
10,100.0	7,045.0	10,180.1	7,045.0	75.0	74.1	65.28	-2,607.2	-992.3	437.9	289.0	148.93	2.940	
10,200.0	7,045.0	10,280.1	7,045.0	77.4	76.5	65.85	-2,608.6	-1,092.3	438.0	284.2	153.77	2.848	
10,300.0	7,045.0	10,380.1	7,045.0	79.8	78.9	66.42	-2,610.0	-1,192.3	438.1	279.4	158.65	2.761	

CC - Min centre to center distance or convergent point, SF - min separation factor, ES - min ellipse separation

<b>Company:</b>	Synergy Resources	<b>Local Co-ordinate Reference:</b>	Well SRC Weis 12-9NHZ
<b>Project:</b>	SEC.4-T4N-R68W	<b>TVD Reference:</b>	WELL @ 5077.0ft (Original Well Elev)
<b>Reference Site:</b>	SRC Kiehn Pad Sec.4-T4N-R68W	<b>MD Reference:</b>	WELL @ 5077.0ft (Original Well Elev)
<b>Site Error:</b>	0.0ft	<b>North Reference:</b>	True
<b>Reference Well:</b>	SRC Weis 12-9NHZ	<b>Survey Calculation Method:</b>	Minimum Curvature
<b>Well Error:</b>	0.0ft	<b>Output errors are at</b>	2.00 sigma
<b>Reference Wellbore</b>	Wellbore #1	<b>Database:</b>	Landmark
<b>Reference Design:</b>	Plan #1 (10-2-14)	<b>Offset TVD Reference:</b>	Offset Datum

<b>Offset Design</b> SRC Kiehn Pad Sec.4-T4N-R68W - SRC Weis K-9NHZ - Wellbore #1 - Plan #1 (10-2-14)												<b>Offset Site Error:</b>	0.0 ft
Survey Program: 0-MWD												<b>Offset Well Error:</b>	0.0 ft
Reference		Offset		Semi Major Axis			Distance						Warning
Measured Depth (ft)	Vertical Depth (ft)	Measured Depth (ft)	Vertical Depth (ft)	Reference (ft)	Offset (ft)	Highside Toolface (°)	Offset Wellbore Centre +N/-S (ft)	+E/-W (ft)	Between Centres (ft)	Between Ellipses (ft)	Minimum Separation (ft)	Separation Factor	
10,400.0	7,045.0	10,480.1	7,045.0	82.2	81.4	-90.00	-2,611.3	-1,292.3	438.2	274.6	163.58	2.678	
10,500.0	7,045.0	10,580.1	7,045.0	84.7	83.9	-90.00	-2,612.7	-1,392.3	438.2	269.7	168.56	2.600	
10,600.0	7,045.0	10,680.1	7,045.0	87.2	86.4	-90.00	-2,614.0	-1,492.3	438.3	264.8	173.57	2.525	
10,700.0	7,045.0	10,780.1	7,045.0	89.7	88.9	-90.00	-2,615.4	-1,592.3	438.4	259.8	178.62	2.454	
10,800.0	7,045.0	10,880.1	7,045.0	92.3	91.5	-90.00	-2,616.8	-1,692.3	438.5	254.8	183.70	2.387	
10,900.0	7,045.0	10,980.1	7,045.0	94.9	94.1	-90.00	-2,618.1	-1,792.3	438.6	249.8	188.81	2.323	
11,000.0	7,045.0	11,080.1	7,045.0	97.4	96.6	-90.00	-2,619.5	-1,892.3	438.7	244.7	193.95	2.262	
11,100.0	7,045.0	11,180.1	7,045.0	100.0	99.2	-90.00	-2,620.8	-1,992.2	438.8	239.7	199.11	2.204	
11,200.0	7,045.0	11,280.1	7,045.0	102.6	101.9	-90.00	-2,622.2	-2,092.2	438.9	234.6	204.30	2.148	
11,300.0	7,045.0	11,380.1	7,045.0	105.2	104.5	-90.00	-2,623.6	-2,192.2	438.9	229.4	209.51	2.095	
11,400.0	7,045.0	11,480.1	7,045.0	107.9	107.1	-90.00	-2,624.9	-2,292.2	439.0	224.3	214.74	2.044	
11,500.0	7,045.0	11,580.1	7,045.0	110.5	109.7	-90.00	-2,626.3	-2,392.2	439.1	219.1	219.99	1.996	
11,600.0	7,045.0	11,680.1	7,045.0	113.1	112.4	-90.00	-2,627.6	-2,492.2	439.2	213.9	225.25	1.950	
11,700.0	7,045.0	11,780.1	7,045.0	115.8	115.1	-90.00	-2,629.0	-2,592.2	439.3	208.8	230.53	1.906	
11,800.0	7,045.0	11,880.1	7,045.0	118.4	117.7	-90.00	-2,630.4	-2,692.2	439.4	203.5	235.83	1.863	
11,900.0	7,045.0	11,980.1	7,045.0	121.1	120.4	-90.00	-2,631.7	-2,792.2	439.5	198.3	241.14	1.822	
12,000.0	7,045.0	12,080.1	7,045.0	123.8	123.1	-90.00	-2,633.1	-2,892.2	439.5	193.1	246.46	1.783	
12,100.0	7,045.0	12,180.1	7,045.0	126.4	125.7	-90.00	-2,634.5	-2,992.1	439.6	187.8	251.80	1.746	
12,150.7	7,045.0	12,230.8	7,045.0	127.8	127.1	-90.00	-2,635.1	-3,042.8	439.7	185.2	254.51	1.728 SF	

Reference Depths are relative to WELL @ 5077.0ft (Original Well Elev) Coordinates are relative to: SRC Weis 12-9NHZ  
Offset Depths are relative to Offset Datum Coordinate System is US State Plane 1983, Colorado Northern Zone  
Central Meridian is -105.500000 ° Grid Convergence at Surface is: 0.32°



<b>Company:</b>	Synergy Resources	<b>Local Co-ordinate Reference:</b>	Well SRC Weis 12-9NHZ
<b>Project:</b>	SEC.4-T4N-R68W	<b>TVD Reference:</b>	WELL @ 5077.0ft (Original Well Elev)
<b>Reference Site:</b>	SRC Kiehn Pad Sec.4-T4N-R68W	<b>MD Reference:</b>	WELL @ 5077.0ft (Original Well Elev)
<b>Site Error:</b>	0.0ft	<b>North Reference:</b>	True
<b>Reference Well:</b>	SRC Weis 12-9NHZ	<b>Survey Calculation Method:</b>	Minimum Curvature
<b>Well Error:</b>	0.0ft	<b>Output errors are at</b>	2.00 sigma
<b>Reference Wellbore</b>	Wellbore #1	<b>Database:</b>	Landmark
<b>Reference Design:</b>	Plan #1 (10-2-14)	<b>Offset TVD Reference:</b>	Offset Datum

Reference Depths are relative to WELL @ 5077.0ft (Original Well Elev) Coordinates are relative to: SRC Weis 12-9NHZ  
 Offset Depths are relative to Offset Datum Coordinate System is US State Plane 1983, Colorado Northern Zone  
 Central Meridian is -105.500000 ° Grid Convergence at Surface is: 0.32°

