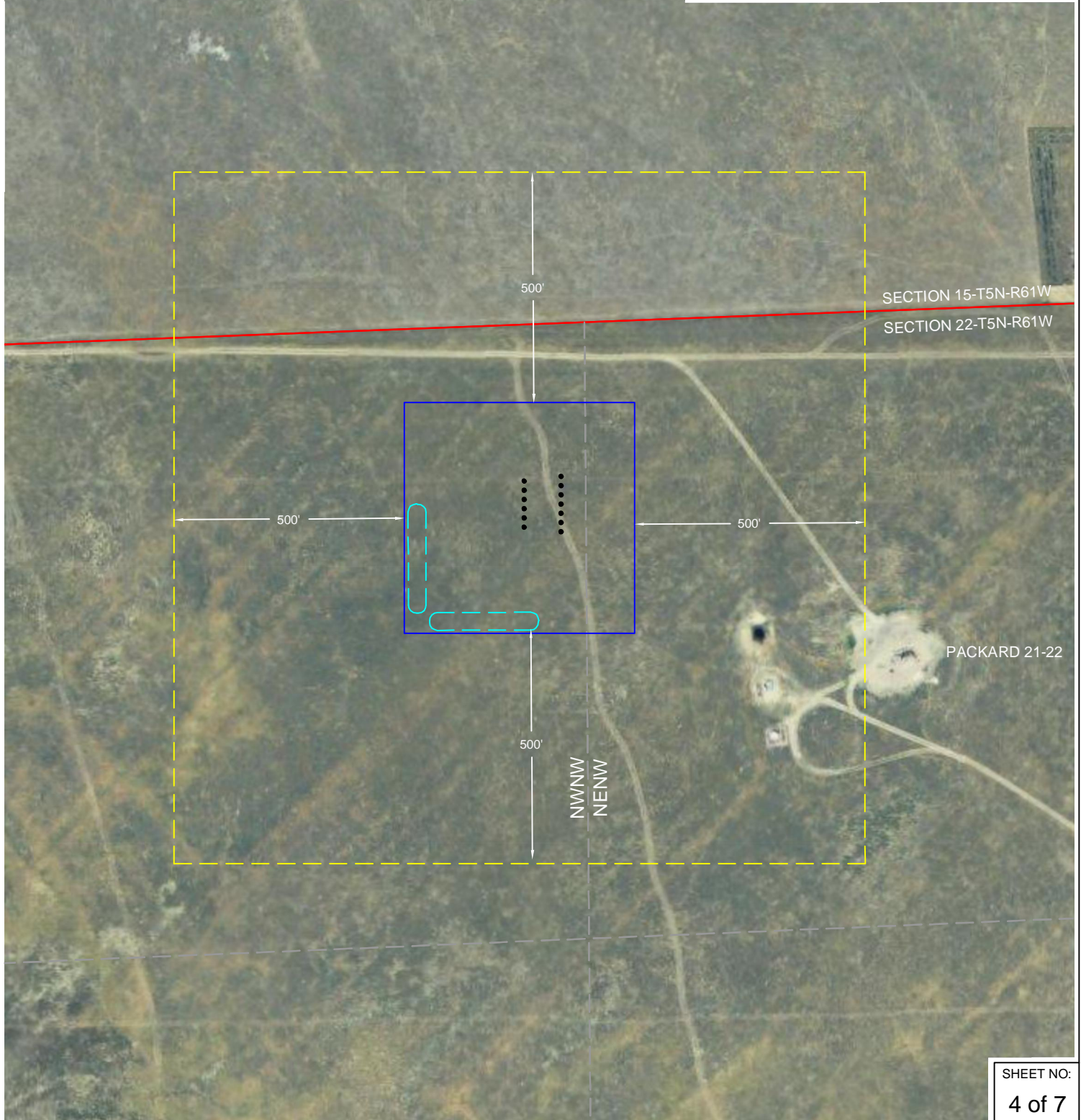


FEATURE	BEARING - DISTANCE
FENCE LINE	N00°00'W - 160'
PACKARD 21-22	S63°43'11"E - 835.27'
SEC. COR. NW S22	N76°41'10"W - 1316.17'

DISTANCES FROM CENTERHOLE PRONGHORN F-J-22HNB TO CLOSET POINT OF FEATURE.

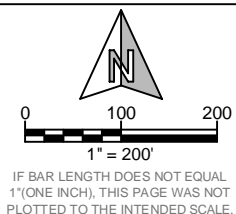


SHEET NO:

4 of 7

Fremont
ENGINEERING & SURVEYING
64 COAL MINE RD.
LANDER, WY 82520
307-349-0840
fes@wyoming.com

Drawn By: DAF
Checked By: MAM
Date: 3/19/14
Revision: #2
Date: 9/2/14
Explanation: change
well configuration



LOCATION DRAWING

PRONGHORN F-22 PAD
NW¼, SECTION 22,
T.5N., R.61W., 6th PM
WELD COUNTY, COLORADO

BONANZA CREEK
410 17th Street
Denver, CO 80202
(720) 440-6100