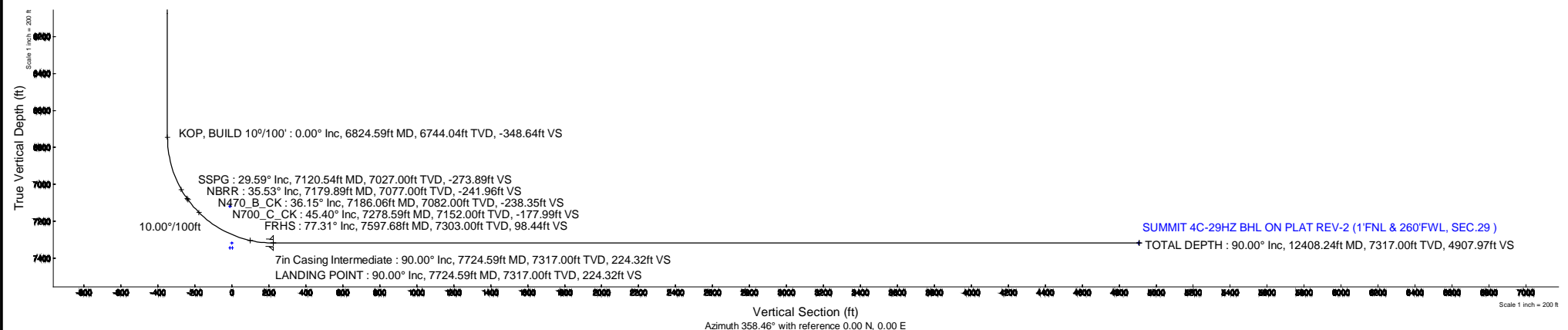
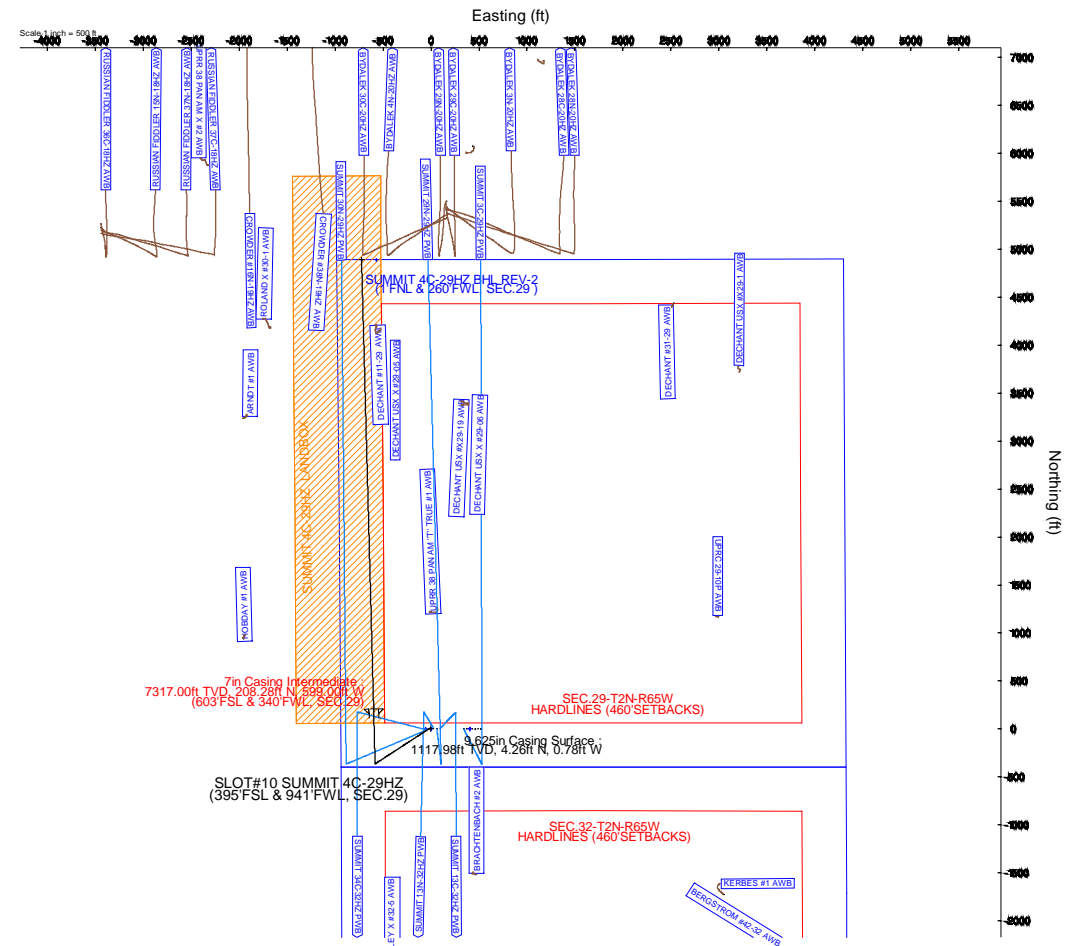


Anadarko
Petroleum Corporation

XTREME 6



| Approval | | | |
|--|--|-------------|--|
| Baker Hughes Representatives | | | |
| Prepared by | | Reviewed by | |
| Signature | | Signature | |
| Position | | Position | |
| Date | | Date | |
| KERR-MCGEE OIL & GAS ONSHORE LP Representative | | | |
| Approved by | | Position | |
| Signature | | Date | |
| Comment | | | |
| | | | |



Planned Wellpath Report

SUMMIT 4C-29HZ PWP (REV-A.0)

Page 1 of 7

REFERENCE WELLPATH IDENTIFICATION

| | | | |
|----------|---------------------------------|----------|--|
| Operator | KERR-MCGEE OIL & GAS ONSHORE LP | Slot | SLOT#10 SUMMIT 4C-29HZ (395'FSL & 941'FWL, SEC.29) |
| Area | COLORADO | Well | SUMMIT 4C-29HZ |
| Field | WELD COUNTY (KERR MCGEE) | Wellbore | SUMMIT 4C-29HZ PWB |
| Facility | SEC.29-T2N-R65W | | |

REPORT SETUP INFORMATION

| | | | |
|---------------------|---|----------------------|---|
| Projection System | NAD83 / Lambert Colorado SP, Northern Zone (501), US feet | Software System | WellArchitect® 4.0.0 |
| North Reference | True | User | Amarcar |
| Scale | 0.99996 | Report Generated | 9/25/2014 at 12:30:09 PM |
| Convergence at slot | n/a | Database/Source file | WellArchitectDB/_SUMMIT_4C-29HZ_PWB.xml |

WELLPATH LOCATION

| | Local coordinates | | Grid coordinates | | Geographic coordinates | |
|-----------------------|-------------------|----------|------------------|-----------------|------------------------|-----------------|
| | North[ft] | East[ft] | Easting[US ft] | Northing[US ft] | Latitude | Longitude |
| Slot Location | -0.20 | -399.80 | 3225518.42 | 1281509.01 | 40°06'11.952"N | 104°41'37.630"W |
| Facility Reference Pt | | | 3225918.18 | 1281512.85 | 40°06'11.954"N | 104°41'32.485"W |
| Field Reference Pt | | | 3197771.84 | 1268891.29 | 40°04'09.600"N | 104°47'36.000"W |

WELLPATH DATUM

| | | | |
|--------------------------|------------------------|---|-------------------|
| Calculation method | Minimum curvature | XTREME 6 (16'KB) (RKB) to Facility Vertical Datum | 4957.00ft |
| Horizontal Reference Pt | Slot | XTREME 6 (16'KB) (RKB) to Mean Sea Level | 4957.00ft |
| Vertical Reference Pt | XTREME 6 (16'KB) (RKB) | XTREME 6 (16'KB) (RKB) to Mud Line at Slot (SLOT#10 SUMMIT 4C-29HZ (395'FSL & 941'FWL, SEC.29)) | 4957.00ft |
| MD Reference Pt | XTREME 6 (16'KB) (RKB) | Section Origin | N 0.00, E 0.00 ft |
| Field Vertical Reference | Mean Sea Level | Section Azimuth | 358.46° |

Planned Wellpath Report

SUMMIT 4C-29HZ PWP (REV-A.0)

Page 2 of 7

REFERENCE WELLPATH IDENTIFICATION

| | | | |
|----------|---------------------------------|----------|--|
| Operator | KERR-MCGEE OIL & GAS ONSHORE LP | Slot | SLOT#10 SUMMIT 4C-29HZ (395'FSL & 941'FWL, SEC.29) |
| Area | COLORADO | Well | SUMMIT 4C-29HZ |
| Field | WELD COUNTY (KERR MCGEE) | Wellbore | SUMMIT 4C-29HZ PWB |
| Facility | SEC.29-T2N-R65W | | |

WELLPATH DATA (144 stations) † = interpolated/extrapolated station

| MD [ft] | Inclination [°] | Azimuth [°] | TVD [ft] | Vert Sect [ft] | North [ft] | East [ft] | Latitude | Longitude | DLS [°/100ft] | Comments |
|----------|-----------------|-------------|----------|----------------|------------|-----------|----------------|-----------------|---------------|----------------------|
| 0.00† | 0.000 | 55.500 | 0.00 | 0.00 | 0.00 | 0.00 | 40°06'11.952"N | 104°41'37.630"W | 0.00 | |
| 16.00 | 0.000 | 55.500 | 16.00 | 0.00 | 0.00 | 0.00 | 40°06'11.952"N | 104°41'37.630"W | 0.00 | |
| 60.00 | 0.100 | 55.500 | 60.00 | 0.02 | 0.02 | 0.03 | 40°06'11.952"N | 104°41'37.630"W | 0.23 | |
| 129.00 | 0.200 | 242.400 | 129.00 | 0.00 | 0.00 | -0.03 | 40°06'11.952"N | 104°41'37.630"W | 0.43 | |
| 227.00 | 0.100 | 98.400 | 227.00 | -0.09 | -0.09 | -0.09 | 40°06'11.951"N | 104°41'37.631"W | 0.29 | |
| 326.00 | 0.100 | 22.600 | 326.00 | -0.03 | -0.02 | 0.03 | 40°06'11.952"N | 104°41'37.630"W | 0.12 | |
| 406.00 | 0.100 | 81.900 | 406.00 | 0.05 | 0.05 | 0.12 | 40°06'11.952"N | 104°41'37.628"W | 0.12 | |
| 486.00 | 0.400 | 20.900 | 486.00 | 0.31 | 0.32 | 0.29 | 40°06'11.955"N | 104°41'37.626"W | 0.45 | |
| 566.00 | 0.300 | 27.300 | 566.00 | 0.75 | 0.77 | 0.49 | 40°06'11.960"N | 104°41'37.624"W | 0.13 | |
| 646.00 | 0.200 | 351.800 | 646.00 | 1.08 | 1.09 | 0.56 | 40°06'11.963"N | 104°41'37.623"W | 0.22 | |
| 726.00 | 0.400 | 4.900 | 726.00 | 1.49 | 1.51 | 0.57 | 40°06'11.967"N | 104°41'37.623"W | 0.26 | |
| 806.00 | 0.200 | 320.300 | 805.99 | 1.88 | 1.89 | 0.50 | 40°06'11.971"N | 104°41'37.624"W | 0.37 | |
| 886.00 | 0.200 | 304.200 | 885.99 | 2.07 | 2.08 | 0.30 | 40°06'11.973"N | 104°41'37.626"W | 0.07 | |
| 966.00 | 0.200 | 355.300 | 965.99 | 2.29 | 2.30 | 0.17 | 40°06'11.975"N | 104°41'37.628"W | 0.22 | |
| 975.01† | 0.295 | 345.561 | 975.00 | 2.33 | 2.34 | 0.16 | 40°06'11.975"N | 104°41'37.628"W | 1.15 | FOX HILLS BASE |
| 1046.00 | 1.100 | 331.530 | 1045.99 | 3.12 | 3.11 | -0.21 | 40°06'11.983"N | 104°41'37.633"W | 1.15 | |
| 1081.00 | 1.000 | 334.400 | 1080.98 | 3.69 | 3.68 | -0.50 | 40°06'11.988"N | 104°41'37.636"W | 0.32 | TIE-INTO MWD SURVEYS |
| 1181.00† | 1.000 | 334.400 | 1180.97 | 5.29 | 5.26 | -1.25 | 40°06'12.004"N | 104°41'37.646"W | 0.00 | |
| 1281.00† | 1.000 | 334.400 | 1280.95 | 6.88 | 6.83 | -2.01 | 40°06'12.019"N | 104°41'37.656"W | 0.00 | |
| 1381.00† | 1.000 | 334.400 | 1380.94 | 8.48 | 8.40 | -2.76 | 40°06'12.035"N | 104°41'37.666"W | 0.00 | |
| 1400.07 | 1.000 | 334.400 | 1400.00 | 8.78 | 8.70 | -2.91 | 40°06'12.038"N | 104°41'37.667"W | 0.00 | BEGIN NUDGE |
| 1481.00† | 2.438 | 256.788 | 1480.90 | 9.08 | 8.95 | -4.89 | 40°06'12.040"N | 104°41'37.693"W | 3.00 | |
| 1581.00† | 5.323 | 243.667 | 1580.66 | 6.70 | 6.40 | -11.12 | 40°06'12.015"N | 104°41'37.773"W | 3.00 | |
| 1681.00† | 8.290 | 239.827 | 1679.95 | 1.30 | 0.72 | -21.51 | 40°06'11.959"N | 104°41'37.907"W | 3.00 | |
| 1781.00† | 11.274 | 238.006 | 1778.48 | -7.11 | -8.08 | -36.03 | 40°06'11.872"N | 104°41'38.094"W | 3.00 | |
| 1881.00† | 14.265 | 236.941 | 1876.00 | -18.51 | -19.98 | -54.65 | 40°06'11.755"N | 104°41'38.333"W | 3.00 | |
| 1882.90 | 14.322 | 236.925 | 1877.84 | -18.75 | -20.24 | -55.04 | 40°06'11.752"N | 104°41'38.338"W | 3.00 | END NUDGE |
| 1981.00† | 14.321 | 236.925 | 1972.89 | -31.44 | -33.48 | -75.38 | 40°06'11.621"N | 104°41'38.600"W | 0.00 | |
| 2081.00† | 14.321 | 236.925 | 2069.79 | -44.38 | -46.98 | -96.11 | 40°06'11.488"N | 104°41'38.867"W | 0.00 | |
| 2181.00† | 14.321 | 236.925 | 2166.68 | -57.32 | -60.48 | -116.84 | 40°06'11.354"N | 104°41'39.134"W | 0.00 | |
| 2281.00† | 14.321 | 236.925 | 2263.57 | -70.26 | -73.98 | -137.56 | 40°06'11.221"N | 104°41'39.400"W | 0.00 | |
| 2381.00† | 14.321 | 236.925 | 2360.46 | -83.19 | -87.48 | -158.29 | 40°06'11.087"N | 104°41'39.667"W | 0.00 | |
| 2481.00† | 14.322 | 236.925 | 2457.35 | -96.13 | -100.98 | -179.02 | 40°06'10.954"N | 104°41'39.934"W | 0.00 | |
| 2581.00† | 14.322 | 236.925 | 2554.25 | -109.07 | -114.48 | -199.75 | 40°06'10.821"N | 104°41'40.201"W | 0.00 | |
| 2681.00† | 14.322 | 236.925 | 2651.14 | -122.00 | -127.98 | -220.48 | 40°06'10.687"N | 104°41'40.467"W | 0.00 | |
| 2781.00† | 14.322 | 236.925 | 2748.03 | -134.94 | -141.48 | -241.20 | 40°06'10.554"N | 104°41'40.734"W | 0.00 | |
| 2881.00† | 14.322 | 236.925 | 2844.92 | -147.88 | -154.98 | -261.93 | 40°06'10.420"N | 104°41'41.001"W | 0.00 | |
| 2981.00† | 14.322 | 236.925 | 2941.82 | -160.82 | -168.48 | -282.66 | 40°06'10.287"N | 104°41'41.268"W | 0.00 | |
| 3081.00† | 14.322 | 236.925 | 3038.71 | -173.75 | -181.98 | -303.39 | 40°06'10.154"N | 104°41'41.534"W | 0.00 | |
| 3181.00† | 14.322 | 236.925 | 3135.60 | -186.69 | -195.48 | -324.11 | 40°06'10.020"N | 104°41'41.801"W | 0.00 | |
| 3281.00† | 14.322 | 236.925 | 3232.49 | -199.63 | -208.98 | -344.84 | 40°06'09.887"N | 104°41'42.068"W | 0.00 | |
| 3381.00† | 14.321 | 236.925 | 3329.38 | -212.56 | -222.48 | -365.57 | 40°06'09.753"N | 104°41'42.335"W | 0.00 | |
| 3481.00† | 14.322 | 236.925 | 3426.28 | -225.50 | -235.98 | -386.30 | 40°06'09.620"N | 104°41'42.601"W | 0.00 | |
| 3581.00† | 14.322 | 236.925 | 3523.17 | -238.44 | -249.48 | -407.03 | 40°06'09.487"N | 104°41'42.868"W | 0.00 | |
| 3681.00† | 14.322 | 236.925 | 3620.06 | -251.38 | -262.97 | -427.75 | 40°06'09.353"N | 104°41'43.135"W | 0.00 | |

Planned Wellpath Report

SUMMIT 4C-29HZ PWP (REV-A.0)

Page 3 of 7

REFERENCE WELLPATH IDENTIFICATION

| | | | |
|----------|---------------------------------|----------|--|
| Operator | KERR-MCGEE OIL & GAS ONSHORE LP | Slot | SLOT#10 SUMMIT 4C-29HZ (395'FSL & 941'FWL, SEC.29) |
| Area | COLORADO | Well | SUMMIT 4C-29HZ |
| Field | WELD COUNTY (KERR MCGEE) | Wellbore | SUMMIT 4C-29HZ PWB |
| Facility | SEC.29-T2N-R65W | | |

WELLPATH DATA (144 stations) † = interpolated/extrapolated station

| MD [ft] | Inclination [°] | Azimuth [°] | TVD [ft] | Vert Sect [ft] | North [ft] | East [ft] | Latitude | Longitude | DLS [°/100ft] | Comments |
|----------|-----------------|-------------|----------|----------------|------------|-----------|----------------|-----------------|---------------|---------------------|
| 3781.00† | 14.322 | 236.925 | 3716.95 | -264.31 | -276.47 | -448.48 | 40°06'09.220"N | 104°41'43.401"W | 0.00 | |
| 3881.00† | 14.322 | 236.925 | 3813.85 | -277.25 | -289.97 | -469.21 | 40°06'09.086"N | 104°41'43.668"W | 0.00 | |
| 3981.00† | 14.322 | 236.925 | 3910.74 | -290.19 | -303.47 | -489.94 | 40°06'08.953"N | 104°41'43.935"W | 0.00 | |
| 4072.90 | 14.322 | 236.925 | 3999.78 | -302.08 | -315.88 | -508.99 | 40°06'08.830"N | 104°41'44.180"W | 0.00 | BEGIN DROP |
| 4081.00† | 14.159 | 236.925 | 4007.63 | -303.12 | -316.97 | -510.66 | 40°06'08.820"N | 104°41'44.202"W | 2.00 | |
| 4181.00† | 12.159 | 236.925 | 4105.00 | -315.03 | -329.39 | -529.73 | 40°06'08.697"N | 104°41'44.447"W | 2.00 | |
| 4207.57† | 11.628 | 236.925 | 4131.00 | -317.89 | -332.38 | -534.32 | 40°06'08.667"N | 104°41'44.506"W | 2.00 | PARKMAN |
| 4281.00† | 10.159 | 236.925 | 4203.11 | -325.15 | -339.95 | -545.95 | 40°06'08.592"N | 104°41'44.656"W | 2.00 | |
| 4381.00† | 8.159 | 236.925 | 4301.83 | -333.47 | -348.64 | -559.29 | 40°06'08.507"N | 104°41'44.827"W | 2.00 | |
| 4481.00† | 6.159 | 236.925 | 4401.04 | -339.99 | -355.44 | -569.73 | 40°06'08.439"N | 104°41'44.962"W | 2.00 | |
| 4564.32† | 4.493 | 236.925 | 4484.00 | -344.03 | -359.66 | -576.21 | 40°06'08.398"N | 104°41'45.045"W | 2.00 | SUSSEX |
| 4581.00† | 4.159 | 236.925 | 4500.63 | -344.69 | -360.35 | -577.27 | 40°06'08.391"N | 104°41'45.059"W | 2.00 | |
| 4681.00† | 2.159 | 236.925 | 4600.48 | -347.58 | -363.35 | -581.88 | 40°06'08.361"N | 104°41'45.118"W | 2.00 | |
| 4781.00† | 0.159 | 236.925 | 4700.45 | -348.63 | -364.46 | -583.58 | 40°06'08.350"N | 104°41'45.140"W | 2.00 | |
| 4788.97 | 0.000 | 358.458 | 4708.42 | -348.64 | -364.47 | -583.59 | 40°06'08.350"N | 104°41'45.140"W | 2.00 | END DROP |
| 4881.00† | 0.000 | 358.458 | 4800.45 | -348.64 | -364.47 | -583.59 | 40°06'08.350"N | 104°41'45.140"W | 0.00 | |
| 4981.00† | 0.000 | 358.458 | 4900.45 | -348.64 | -364.47 | -583.59 | 40°06'08.350"N | 104°41'45.140"W | 0.00 | |
| 5081.00† | 0.000 | 358.458 | 5000.45 | -348.64 | -364.47 | -583.59 | 40°06'08.350"N | 104°41'45.140"W | 0.00 | |
| 5181.00† | 0.000 | 358.458 | 5100.45 | -348.64 | -364.47 | -583.59 | 40°06'08.350"N | 104°41'45.140"W | 0.00 | |
| 5281.00† | 0.000 | 358.458 | 5200.45 | -348.64 | -364.47 | -583.59 | 40°06'08.350"N | 104°41'45.140"W | 0.00 | |
| 5381.00† | 0.000 | 358.458 | 5300.45 | -348.64 | -364.47 | -583.59 | 40°06'08.350"N | 104°41'45.140"W | 0.00 | |
| 5481.00† | 0.000 | 358.458 | 5400.45 | -348.64 | -364.47 | -583.59 | 40°06'08.350"N | 104°41'45.140"W | 0.00 | |
| 5581.00† | 0.000 | 358.458 | 5500.45 | -348.64 | -364.47 | -583.59 | 40°06'08.350"N | 104°41'45.140"W | 0.00 | |
| 5681.00† | 0.000 | 358.458 | 5600.45 | -348.64 | -364.47 | -583.59 | 40°06'08.350"N | 104°41'45.140"W | 0.00 | |
| 5781.00† | 0.000 | 358.458 | 5700.45 | -348.64 | -364.47 | -583.59 | 40°06'08.350"N | 104°41'45.140"W | 0.00 | |
| 5881.00† | 0.000 | 358.458 | 5800.45 | -348.64 | -364.47 | -583.59 | 40°06'08.350"N | 104°41'45.140"W | 0.00 | |
| 5981.00† | 0.000 | 358.458 | 5900.45 | -348.64 | -364.47 | -583.59 | 40°06'08.350"N | 104°41'45.140"W | 0.00 | |
| 6081.00† | 0.000 | 358.458 | 6000.45 | -348.64 | -364.47 | -583.59 | 40°06'08.350"N | 104°41'45.140"W | 0.00 | |
| 6181.00† | 0.000 | 358.458 | 6100.45 | -348.64 | -364.47 | -583.59 | 40°06'08.350"N | 104°41'45.140"W | 0.00 | |
| 6281.00† | 0.000 | 358.458 | 6200.45 | -348.64 | -364.47 | -583.59 | 40°06'08.350"N | 104°41'45.140"W | 0.00 | |
| 6381.00† | 0.000 | 358.458 | 6300.45 | -348.64 | -364.47 | -583.59 | 40°06'08.350"N | 104°41'45.140"W | 0.00 | |
| 6481.00† | 0.000 | 358.458 | 6400.45 | -348.64 | -364.47 | -583.59 | 40°06'08.350"N | 104°41'45.140"W | 0.00 | |
| 6581.00† | 0.000 | 358.458 | 6500.45 | -348.64 | -364.47 | -583.59 | 40°06'08.350"N | 104°41'45.140"W | 0.00 | |
| 6681.00† | 0.000 | 358.458 | 6600.45 | -348.64 | -364.47 | -583.59 | 40°06'08.350"N | 104°41'45.140"W | 0.00 | |
| 6781.00† | 0.000 | 358.458 | 6700.45 | -348.64 | -364.47 | -583.59 | 40°06'08.350"N | 104°41'45.140"W | 0.00 | |
| 6824.59 | 0.000 | 358.458 | 6744.04 | -348.64 | -364.47 | -583.59 | 40°06'08.350"N | 104°41'45.140"W | 0.00 | KOP, BUILD 10°/100' |
| 6881.00† | 5.641 | 358.458 | 6800.36 | -345.86 | -361.69 | -583.66 | 40°06'08.378"N | 104°41'45.141"W | 10.00 | |
| 6981.00† | 15.641 | 358.458 | 6898.51 | -327.42 | -343.26 | -584.16 | 40°06'08.560"N | 104°41'45.147"W | 10.00 | |
| 7081.00† | 25.641 | 358.458 | 6991.98 | -292.22 | -308.06 | -585.11 | 40°06'08.908"N | 104°41'45.160"W | 10.00 | |
| 7120.54† | 29.594 | 358.458 | 7027.00 | -273.89 | -289.75 | -585.60 | 40°06'09.089"N | 104°41'45.166"W | 10.00 | SSPG |
| 7179.89† | 35.530 | 358.458 | 7077.00 | -241.96 | -257.83 | -586.46 | 40°06'09.404"N | 104°41'45.177"W | 10.00 | NBRR |
| 7181.00† | 35.641 | 358.458 | 7077.90 | -241.32 | -257.18 | -586.48 | 40°06'09.410"N | 104°41'45.177"W | 10.00 | |
| 7186.06† | 36.146 | 358.458 | 7082.00 | -238.35 | -254.22 | -586.56 | 40°06'09.440"N | 104°41'45.178"W | 10.00 | N470_B_CK |
| 7278.59† | 45.400 | 358.458 | 7152.00 | -177.99 | -193.87 | -588.18 | 40°06'10.036"N | 104°41'45.199"W | 10.00 | N700_C_CK |
| 7281.00† | 45.641 | 358.458 | 7153.69 | -176.27 | -192.15 | -588.23 | 40°06'10.053"N | 104°41'45.200"W | 10.00 | |

Planned Wellpath Report

SUMMIT 4C-29HZ PWP (REV-A.0)

Page 4 of 7

REFERENCE WELLPATH IDENTIFICATION

| | | | |
|----------|---------------------------------|----------|--|
| Operator | KERR-MCGEE OIL & GAS ONSHORE LP | Slot | SLOT#10 SUMMIT 4C-29HZ (395'FSL & 941'FWL, SEC.29) |
| Area | COLORADO | Well | SUMMIT 4C-29HZ |
| Field | WELD COUNTY (KERR MCGEE) | Wellbore | SUMMIT 4C-29HZ PWB |
| Facility | SEC.29-T2N-R65W | | |

WELLPATH DATA (144 stations) † = interpolated/extrapolated station

| MD [ft] | Inclination [°] | Azimuth [°] | TVD [ft] | Vert Sect [ft] | North [ft] | East [ft] | Latitude | Longitude | DLS [°/100ft] | Comments |
|-----------|-----------------|-------------|----------|----------------|------------|-----------|----------------|-----------------|---------------|---------------|
| 7381.00† | 55.641 | 358.458 | 7217.03 | -99.05 | -114.96 | -590.30 | 40°06'10.816"N | 104°41'45.227"W | 10.00 | |
| 7481.00† | 65.641 | 358.458 | 7265.99 | -12.00 | -27.95 | -592.65 | 40°06'11.676"N | 104°41'45.257"W | 10.00 | |
| 7581.00† | 75.641 | 358.458 | 7299.10 | 82.23 | 66.24 | -595.18 | 40°06'12.607"N | 104°41'45.289"W | 10.00 | |
| 7597.68† | 77.309 | 358.458 | 7303.00 | 98.44 | 82.46 | -595.62 | 40°06'12.767"N | 104°41'45.295"W | 10.00 | FRHS |
| 7681.00† | 85.641 | 358.458 | 7315.34 | 180.77 | 164.75 | -597.83 | 40°06'13.580"N | 104°41'45.324"W | 10.00 | |
| 7724.59 | 90.000 | 358.458 | 7317.00 | 224.32 | 208.28 | -599.00 | 40°06'14.010"N | 104°41'45.339"W | 10.00 | LANDING POINT |
| 7781.00† | 90.000 | 358.458 | 7317.00 | 280.73 | 264.67 | -600.52 | 40°06'14.567"N | 104°41'45.358"W | 0.00 | |
| 7881.00† | 90.000 | 358.458 | 7317.00 | 380.73 | 364.64 | -603.21 | 40°06'15.555"N | 104°41'45.393"W | 0.00 | |
| 7981.00† | 90.000 | 358.458 | 7317.00 | 480.73 | 464.60 | -605.90 | 40°06'16.543"N | 104°41'45.428"W | 0.00 | |
| 8081.00† | 90.000 | 358.458 | 7317.00 | 580.73 | 564.57 | -608.59 | 40°06'17.531"N | 104°41'45.462"W | 0.00 | |
| 8181.00† | 90.000 | 358.458 | 7317.00 | 680.73 | 664.53 | -611.28 | 40°06'18.519"N | 104°41'45.497"W | 0.00 | |
| 8281.00† | 90.000 | 358.458 | 7317.00 | 780.73 | 764.49 | -613.98 | 40°06'19.507"N | 104°41'45.532"W | 0.00 | |
| 8381.00† | 90.000 | 358.458 | 7317.00 | 880.73 | 864.46 | -616.67 | 40°06'20.495"N | 104°41'45.566"W | 0.00 | |
| 8481.00† | 90.000 | 358.458 | 7317.00 | 980.73 | 964.42 | -619.36 | 40°06'21.482"N | 104°41'45.601"W | 0.00 | |
| 8581.00† | 90.000 | 358.458 | 7317.00 | 1080.73 | 1064.38 | -622.05 | 40°06'22.470"N | 104°41'45.635"W | 0.00 | |
| 8681.00† | 90.000 | 358.458 | 7317.00 | 1180.73 | 1164.35 | -624.74 | 40°06'23.458"N | 104°41'45.670"W | 0.00 | |
| 8781.00† | 90.000 | 358.458 | 7317.00 | 1280.73 | 1264.31 | -627.43 | 40°06'24.446"N | 104°41'45.705"W | 0.00 | |
| 8881.00† | 90.000 | 358.458 | 7317.00 | 1380.73 | 1364.28 | -630.12 | 40°06'25.434"N | 104°41'45.739"W | 0.00 | |
| 8981.00† | 90.000 | 358.458 | 7317.00 | 1480.73 | 1464.24 | -632.81 | 40°06'26.422"N | 104°41'45.774"W | 0.00 | |
| 9081.00† | 90.000 | 358.458 | 7317.00 | 1580.73 | 1564.20 | -635.50 | 40°06'27.410"N | 104°41'45.809"W | 0.00 | |
| 9181.00† | 90.000 | 358.458 | 7317.00 | 1680.73 | 1664.17 | -638.19 | 40°06'28.397"N | 104°41'45.843"W | 0.00 | |
| 9281.00† | 90.000 | 358.458 | 7317.00 | 1780.73 | 1764.13 | -640.88 | 40°06'29.385"N | 104°41'45.878"W | 0.00 | |
| 9381.00† | 90.000 | 358.458 | 7317.00 | 1880.73 | 1864.10 | -643.57 | 40°06'30.373"N | 104°41'45.913"W | 0.00 | |
| 9481.00† | 90.000 | 358.458 | 7317.00 | 1980.73 | 1964.06 | -646.26 | 40°06'31.361"N | 104°41'45.947"W | 0.00 | |
| 9581.00† | 90.000 | 358.458 | 7317.00 | 2080.73 | 2064.02 | -648.95 | 40°06'32.349"N | 104°41'45.982"W | 0.00 | |
| 9681.00† | 90.000 | 358.458 | 7317.00 | 2180.73 | 2163.99 | -651.64 | 40°06'33.337"N | 104°41'46.017"W | 0.00 | |
| 9781.00† | 90.000 | 358.458 | 7317.00 | 2280.73 | 2263.95 | -654.33 | 40°06'34.325"N | 104°41'46.051"W | 0.00 | |
| 9881.00† | 90.000 | 358.458 | 7317.00 | 2380.73 | 2363.91 | -657.02 | 40°06'35.312"N | 104°41'46.086"W | 0.00 | |
| 9981.00† | 90.000 | 358.458 | 7317.00 | 2480.73 | 2463.88 | -659.71 | 40°06'36.300"N | 104°41'46.121"W | 0.00 | |
| 10081.00† | 90.000 | 358.458 | 7317.00 | 2580.73 | 2563.84 | -662.40 | 40°06'37.288"N | 104°41'46.155"W | 0.00 | |
| 10181.00† | 90.000 | 358.459 | 7317.00 | 2680.73 | 2663.81 | -665.09 | 40°06'38.276"N | 104°41'46.190"W | 0.00 | |
| 10281.00† | 90.000 | 358.459 | 7317.00 | 2780.73 | 2763.77 | -667.78 | 40°06'39.264"N | 104°41'46.225"W | 0.00 | |
| 10381.00† | 90.000 | 358.459 | 7317.00 | 2880.73 | 2863.73 | -670.47 | 40°06'40.252"N | 104°41'46.259"W | 0.00 | |
| 10481.00† | 90.000 | 358.459 | 7317.00 | 2980.73 | 2963.70 | -673.16 | 40°06'41.240"N | 104°41'46.294"W | 0.00 | |
| 10581.00† | 90.000 | 358.459 | 7317.00 | 3080.73 | 3063.66 | -675.85 | 40°06'42.227"N | 104°41'46.329"W | 0.00 | |
| 10681.00† | 90.000 | 358.459 | 7317.00 | 3180.73 | 3163.62 | -678.54 | 40°06'43.215"N | 104°41'46.363"W | 0.00 | |
| 10781.00† | 90.000 | 358.459 | 7317.00 | 3280.73 | 3263.59 | -681.23 | 40°06'44.203"N | 104°41'46.398"W | 0.00 | |
| 10881.00† | 90.000 | 358.459 | 7317.00 | 3380.73 | 3363.55 | -683.92 | 40°06'45.191"N | 104°41'46.433"W | 0.00 | |
| 10981.00† | 90.000 | 358.459 | 7317.00 | 3480.73 | 3463.52 | -686.61 | 40°06'46.179"N | 104°41'46.467"W | 0.00 | |
| 11081.00† | 90.000 | 358.459 | 7317.00 | 3580.73 | 3563.48 | -689.30 | 40°06'47.167"N | 104°41'46.502"W | 0.00 | |
| 11181.00† | 90.000 | 358.459 | 7317.00 | 3680.73 | 3663.44 | -691.99 | 40°06'48.155"N | 104°41'46.537"W | 0.00 | |
| 11281.00† | 90.000 | 358.459 | 7317.00 | 3780.73 | 3763.41 | -694.68 | 40°06'49.142"N | 104°41'46.571"W | 0.00 | |
| 11381.00† | 90.000 | 358.459 | 7317.00 | 3880.73 | 3863.37 | -697.37 | 40°06'50.130"N | 104°41'46.606"W | 0.00 | |
| 11481.00† | 90.000 | 358.459 | 7317.00 | 3980.73 | 3963.34 | -700.06 | 40°06'51.118"N | 104°41'46.641"W | 0.00 | |
| 11581.00† | 90.000 | 358.459 | 7317.00 | 4080.73 | 4063.30 | -702.75 | 40°06'52.106"N | 104°41'46.675"W | 0.00 | |

Planned Wellpath Report

SUMMIT 4C-29HZ PWP (REV-A.0)

Page 5 of 7

REFERENCE WELLPATH IDENTIFICATION

| | | | |
|----------|---------------------------------|----------|--|
| Operator | KERR-MCGEE OIL & GAS ONSHORE LP | Slot | SLOT#10 SUMMIT 4C-29HZ (395'FSL & 941'FWL, SEC.29) |
| Area | COLORADO | Well | SUMMIT 4C-29HZ |
| Field | WELD COUNTY (KERR MCGEE) | Wellbore | SUMMIT 4C-29HZ PWB |
| Facility | SEC.29-T2N-R65W | | |

WELLPATH DATA (144 stations) † = interpolated/extrapolated station

| MD [ft] | Inclination [°] | Azimuth [°] | TVD [ft] | Vert Sect [ft] | North [ft] | East [ft] | Latitude | Longitude | DLS [°/100ft] | Comments |
|-----------|-----------------|-------------|----------------------|----------------|------------|-----------|----------------|-----------------|---------------|-------------|
| 11681.00† | 90.000 | 358.459 | 7317.00 | 4180.73 | 4163.26 | -705.44 | 40°06'53.094"N | 104°41'46.710"W | 0.00 | |
| 11781.00† | 90.000 | 358.459 | 7317.00 | 4280.73 | 4263.23 | -708.13 | 40°06'54.082"N | 104°41'46.745"W | 0.00 | |
| 11881.00† | 90.000 | 358.459 | 7317.00 | 4380.73 | 4363.19 | -710.82 | 40°06'55.070"N | 104°41'46.779"W | 0.00 | |
| 11981.00† | 90.000 | 358.459 | 7317.00 | 4480.73 | 4463.15 | -713.51 | 40°06'56.057"N | 104°41'46.814"W | 0.00 | |
| 12081.00† | 90.000 | 358.459 | 7317.00 | 4580.73 | 4563.12 | -716.20 | 40°06'57.045"N | 104°41'46.848"W | 0.00 | |
| 12181.00† | 90.000 | 358.459 | 7317.00 | 4680.73 | 4663.08 | -718.89 | 40°06'58.033"N | 104°41'46.883"W | 0.00 | |
| 12281.00† | 90.000 | 358.459 | 7317.00 | 4780.73 | 4763.05 | -721.58 | 40°06'59.021"N | 104°41'46.918"W | 0.00 | |
| 12381.00† | 90.000 | 358.459 | 7317.00 | 4880.73 | 4863.01 | -724.27 | 40°07'00.009"N | 104°41'46.952"W | 0.00 | |
| 12408.24 | 90.000 | 358.459 | 7317.00 ¹ | 4907.97 | 4890.24 | -725.00 | 40°07'00.278"N | 104°41'46.962"W | 0.00 | TOTAL DEPTH |

HOLE & CASING SECTIONS - Ref Wellbore: SUMMIT 4C-29HZ PWB Ref Wellpath: SUMMIT 4C-29HZ PWP (REV-A.0)

| String/Diameter | Start MD [ft] | End MD [ft] | Interval [ft] | Start TVD [ft] | End TVD [ft] | Start N/S [ft] | Start E/W [ft] | End N/S [ft] | End E/W [ft] |
|-------------------------|---------------|-------------|---------------|----------------|--------------|----------------|----------------|--------------|--------------|
| 13.5in Open Hole | 16.00 | 1128.00 | 1112.00 | 16.00 | 1127.97 | 0.00 | 0.00 | 4.42 | -0.85 |
| 9.625in Casing Surface | 16.00 | 1118.00 | 1102.00 | 16.00 | 1117.98 | 0.00 | 0.00 | 4.26 | -0.78 |
| 8.75in Open Hole | 1128.00 | 7724.59 | 6596.59 | 1127.97 | 7317.00 | 4.42 | -0.85 | 208.28 | -599.00 |
| 7in Casing Intermediate | 16.00 | 7724.59 | 7708.59 | 16.00 | 7317.00 | 0.00 | 0.00 | 208.28 | -599.00 |
| 6.125in Open Hole | 7724.59 | 12408.24 | 4683.65 | 7317.00 | 7317.00 | 208.28 | -599.00 | 4890.24 | -725.00 |
| 4.5in Casing Production | 16.00 | 12408.24 | 12392.24 | 16.00 | 7317.00 | 0.00 | 0.00 | 4890.24 | -725.00 |

Planned Wellpath Report

SUMMIT 4C-29HZ PWP (REV-A.0)

Page 6 of 7

| REFERENCE WELLPATH IDENTIFICATION | | | | |
|-----------------------------------|---------------------------------|----------|--|--|
| Operator | KERR-MCGEE OIL & GAS ONSHORE LP | Slot | SLOT#10 SUMMIT 4C-29HZ (395'FSL & 941'FWL, SEC.29) | |
| Area | COLORADO | Well | SUMMIT 4C-29HZ | |
| Field | WELD COUNTY (KERR MCGEE) | Wellbore | SUMMIT 4C-29HZ PWB | |
| Facility | SEC.29-T2N-R65W | | | |

| TARGETS | | | | | | | | | |
|---|----------|----------|------------|-----------|-------------------|--------------------|----------------|-----------------|---------|
| Name | MD [ft] | TVD [ft] | North [ft] | East [ft] | Grid East [US ft] | Grid North [US ft] | Latitude | Longitude | Shape |
| SEC.29-T2N-R65W SECTION LINES | | 7118.00 | 0.41 | 399.80 | 3225918.18 | 1281513.05 | 40°06'11.956"N | 104°41'32.485"W | polygon |
| SEC.32-T2N-R65W SECTION LINES | | 7118.00 | 0.41 | 399.80 | 3225918.18 | 1281513.05 | 40°06'11.956"N | 104°41'32.485"W | polygon |
| SUMMIT 4C-29HZ LANDBOX | | 7317.00 | 0.00 | 0.03 | 3225518.45 | 1281509.01 | 40°06'11.952"N | 104°41'37.630"W | polygon |
| SUMMIT 4C-29HZ BHL ON PLAT REV-1 (1'FNL & 410'FWL, SEC.29) | | 7317.00 | 4890.24 | -571.96 | 3224902.05 | 1286393.64 | 40°07'00.278"N | 104°41'44.992"W | point |
| 1) SUMMIT 4C-29HZ BHL ON PLAT REV-2 (1'FNL & 260'FWL, SEC.29) | 12408.24 | 7317.00 | 4890.24 | -725.00 | 3224749.02 | 1286392.25 | 40°07'00.278"N | 104°41'46.962"W | point |
| SEC.29-T2N-R65W HARDLINES (460'SETBACKS) | | 7343.00 | 0.00 | -60.11 | 3225458.31 | 1281508.46 | 40°06'11.952"N | 104°41'38.404"W | polygon |
| SEC.32-T2N-R65W HARDLINES (460'SETBACKS) | | 7343.00 | 0.41 | 399.80 | 3225918.18 | 1281513.05 | 40°06'11.956"N | 104°41'32.485"W | polygon |

| SURVEY PROGRAM - Ref Wellbore: SUMMIT 4C-29HZ PWB Ref Wellpath: SUMMIT 4C-29HZ PWP (REV-A.0) | | | | |
|--|-------------|-------------------------------|------------------|--------------------|
| Start MD [ft] | End MD [ft] | Positional Uncertainty Model | Log Name/Comment | Wellbore |
| 16.00 | 1081.00 | ISCWSA MWD, Rev. 2 (Standard) | | SUMMIT 4C-29HZ AWB |
| 1081.00 | 7724.59 | NaviTrak (MAGCORR,IFR) | | SUMMIT 4C-29HZ PWB |
| 7724.59 | 12408.24 | NaviTrak (MAGCORR,IFR) | | SUMMIT 4C-29HZ PWB |

Planned Wellpath Report

SUMMIT 4C-29HZ PWP (REV-A.0)

Page 7 of 7

REFERENCE WELLPATH IDENTIFICATION

| | | | |
|----------|---------------------------------|----------|--|
| Operator | KERR-MCGEE OIL & GAS ONSHORE LP | Slot | SLOT#10 SUMMIT 4C-29HZ (395'FSL & 941'FWL, SEC.29) |
| Area | COLORADO | Well | SUMMIT 4C-29HZ |
| Field | WELD COUNTY (KERR MCGEE) | Wellbore | SUMMIT 4C-29HZ PWB |
| Facility | SEC.29-T2N-R65W | | |

WELLPATH COMMENTS

| MD [ft] | Inclination [°] | Azimuth [°] | TVD [ft] | Comment |
|------------|--------------------|----------------|-------------|----------------|
| 975.01 | 0.295 | 345.561 | 975.00 | FOX HILLS BASE |
| 4207.57 | 11.628 | 236.925 | 4131.00 | PARKMAN |
| 4564.32 | 4.493 | 236.925 | 4484.00 | SUSSEX |
| 7120.54 | 29.594 | 358.458 | 7027.00 | SSPG |
| 7179.89 | 35.530 | 358.458 | 7077.00 | NBRR |
| 7186.06 | 36.146 | 358.458 | 7082.00 | N470_B_CK |
| 7278.59 | 45.400 | 358.458 | 7152.00 | N700_C_CK |
| 7597.68 | 77.309 | 358.458 | 7303.00 | FRHS |

DESIGN COMMENTS

| MD [ft] | Inclination [°] | Azimuth [°] | TVD [ft] | Comment |
|------------|--------------------|----------------|-------------|----------------------|
| 1081.00 | 1.000 | 334.400 | 1080.98 | TIE-INTO MWD SURVEYS |
| 1400.07 | 1.000 | 334.400 | 1400.00 | BEGIN NUDGE |
| 1882.90 | 14.322 | 236.925 | 1877.84 | END NUDGE |
| 4072.90 | 14.322 | 236.925 | 3999.78 | BEGIN DROP |
| 4788.97 | 0.000 | 358.458 | 4708.42 | END DROP |
| 6824.59 | 0.000 | 358.458 | 6744.04 | KOP, BUILD 10°/100' |
| 7724.59 | 90.000 | 358.458 | 7317.00 | LANDING POINT |
| 12408.24 | 90.000 | 358.459 | 7317.00 | TOTAL DEPTH |