

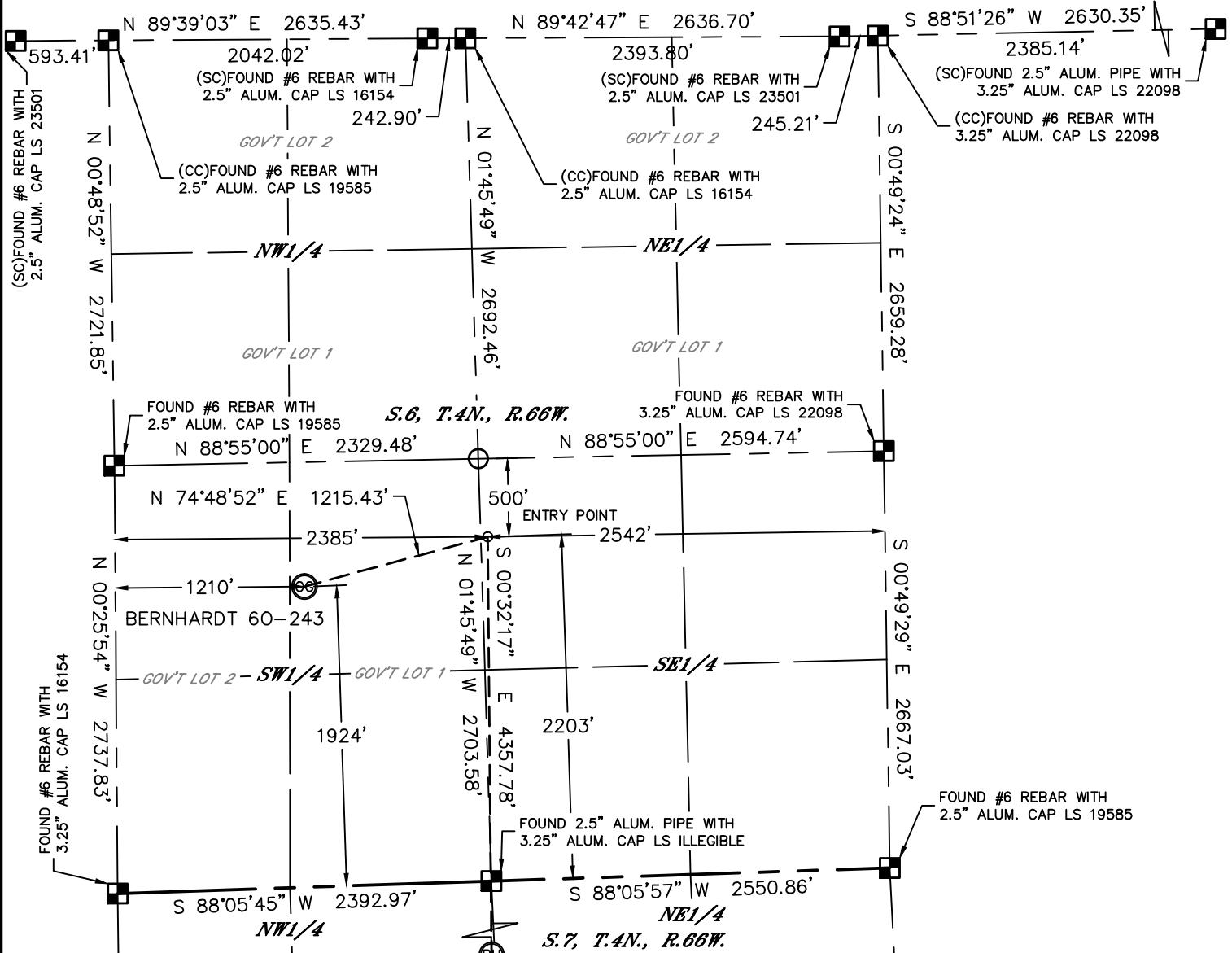


Lat40°, Inc. 1635 Foxtrail Drive, Suite 325 Loveland, CO 970-776-3321

WELL LOCATION CERTIFICATE

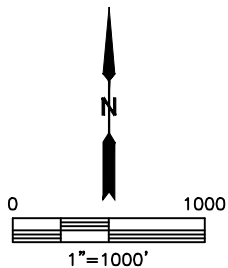
THIS MAP DOES NOT REPRESENT A BOUNDARY SURVEY

SECTION: 6
TOWNSHIP: 4N
RANGE: 66W



In accordance with a request from Mac Neumann with PDC ENERGY Lat40°, Inc. has determined the surface location of the BERNHARDT 60-243 to be 1924' from the SOUTH line and 1210' from the WEST line as measured at right angles from the section lines of Section 6, Township 4 North, Range 66 West and the bottom hole to be 2154' from the NORTH line and 2385' from the WEST line as measured at right angles from the section lines of Section 7, Township 4 North, Range 66 West of the Sixth Principal Meridian, County of Weld, State of Colorado.

I hereby state that this Well Location Certificate was prepared by me, or under my direct supervision, that the fieldwork was completed on 8/8/2014, for and on behalf of PDC ENERGY. That this is not a Land Survey Plat or an Improvement Survey Plat, and that it is not to be relied upon for establishment of fence, building, or other future improvement lines.



NOTE:

- 1) Bearings shown are Grid Bearings of the Colorado State Plane Coordinate System, North Zone, North American Datum 1983. The lined dimensions as contained herein are based upon the "U.S. Survey Foot."
- 2) Ground elevations are based on an observed GPS elevation (NAVD 1988 DATUM).
- 3) IMPROVEMENTS: See LOCATION DRAWING for all visible improvements within 500' of disturbed area.
- 4) SURFACE USE: CROP LAND
- 5) INSTRUMENT OPERATOR: BRIAN ROTTINGHAUS
- 6) NEAREST CULTURAL ITEMS:
BUILDING: ±1484' SE
BUILDING UNIT: ±1700' SE
HIGH OCCUPANCY BUILDING UNIT: ±4078' SW
DESIGNATED OUTSIDE ACTIVITY AREA: 5280'+
PUBLIC ROAD: (CR 25) ±880' NW
ABOVEGROUND UTILITY: ±201' NW
RAILROAD: ±210' NW (ABANDONED)
PROPERTY LINE: ±796' N

SURFACE LOCATION

LAT: 40.33919°N
LONG: 104.82545°W
PDOP: 1.8
ELEV: 4713'
1/4, 1/4: NESW

BOTTOM HOLE

LAT: 40.32808°N
LONG: 104.82120°W

ENTRY POINT

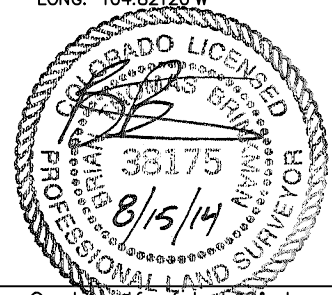
LAT: 40.34004°N
LONG: 104.82123°W

LEGEND

- = ALIQUOT MONUMENT AS DESCRIBED
○ = CALCULATED POSITION

SHEET 1 OF 2

Brian T. Brinkman—On behalf of Lat40°, Inc.
Colorado Licensed Professional
Land Surveyor No. 38175
DATE: 8/15/2014
PROJECT#: 2013177



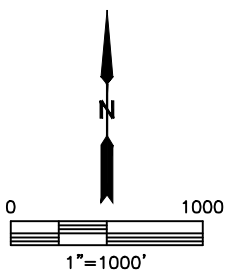
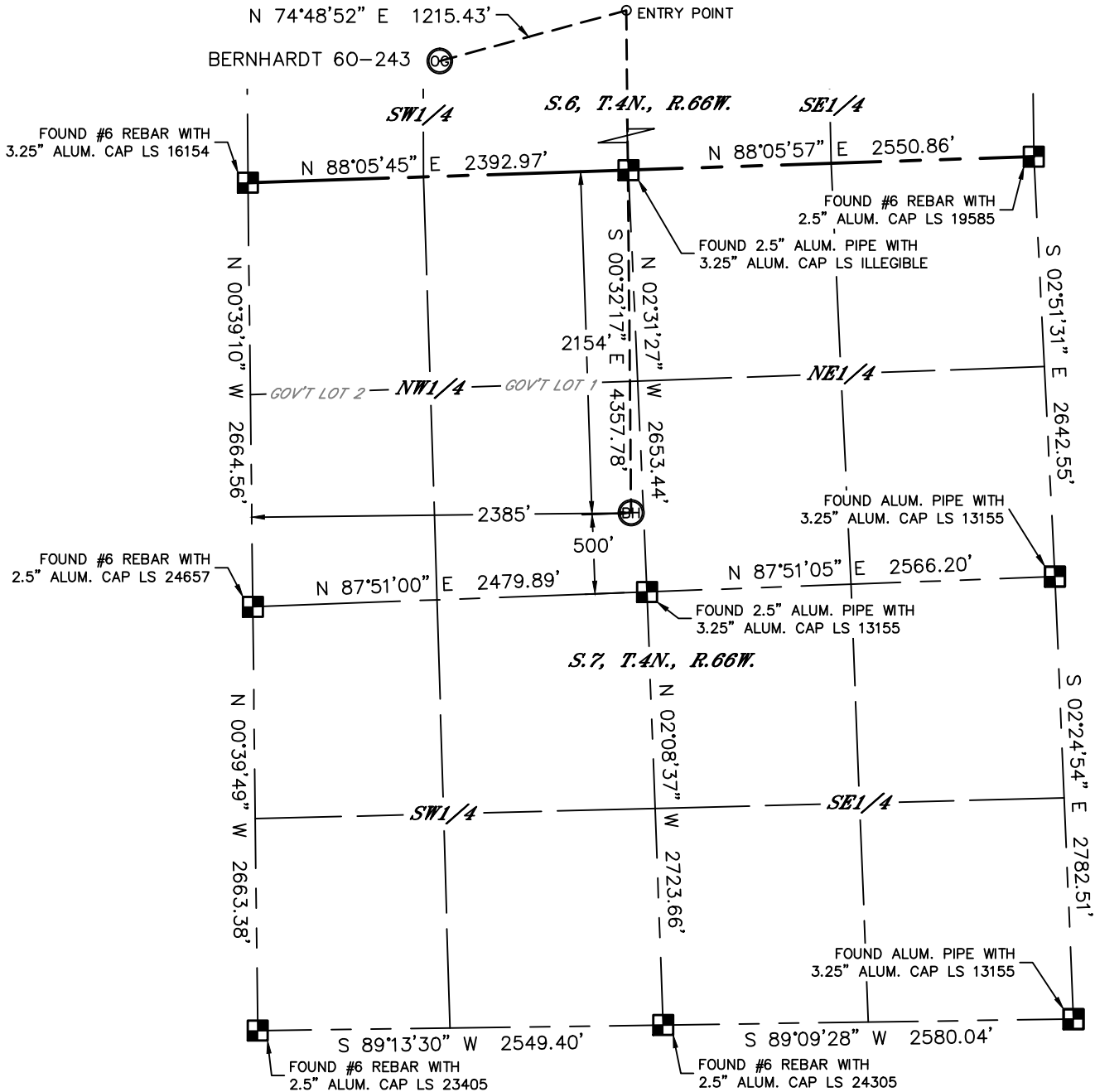


Lat40°, Inc. 1635 Foxtrail Drive, Suite 325 Loveland, CO 970-776-3321

WELL LOCATION CERTIFICATE

THIS MAP DOES NOT REPRESENT A BOUNDARY SURVEY

SECTION: 6
TOWNSHIP: 4N
RANGE: 66W

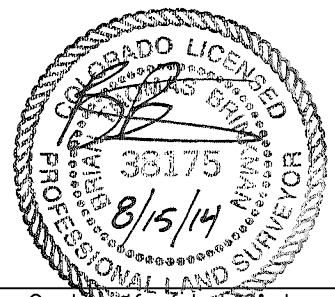


LEGEND

- = ALIQUOT MONUMENT AS DESCRIBED
- = CALCULATED POSITION

SHEET 2 OF 2

Brian T. Brinkman—On behalf of Lat40°, Inc.
Colorado Licensed Professional
Land Surveyor No. 38175
DATE: 8/15/2014
PROJECT#: 2013177



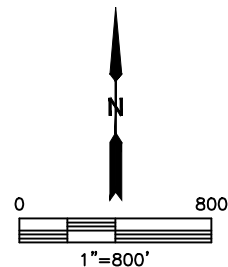
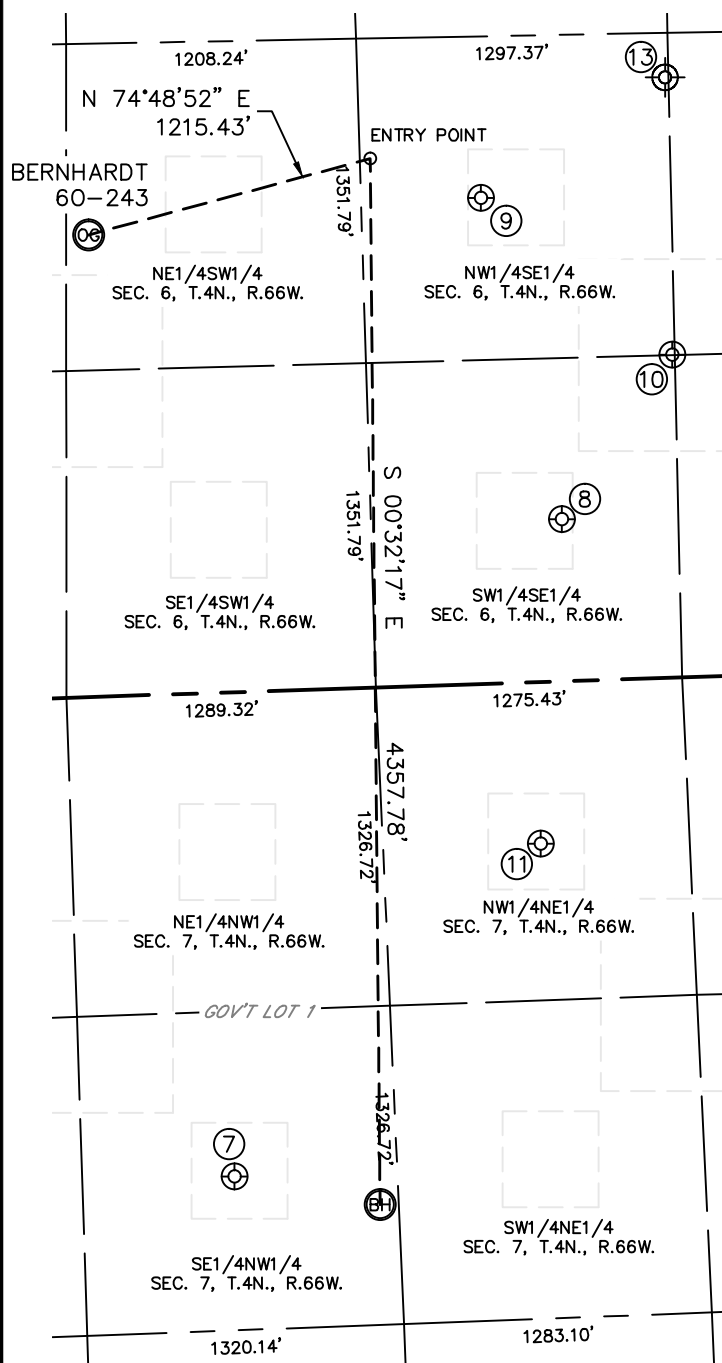


Lat40°, Inc. 1635 Foxtrail Drive, Suite 325 Loveland, CO 970-776-3321

SITE SKETCH

BERNHARDT 60-243

SECTION: 6
TOWNSHIP: 4N
RANGE: 66W



WELL NO.	WELL NAME	SHL FOOTAGE				SHL LAT°	SHL LONG°	PDOP	ELEV (FT.)	1/4/1/4
7	BERNHARDT 7-2	2017	FNL	1780	FWL	40.32841	-104.82337	2.3	4729	SENW
8	KAMMERZELL NORDIC 1-6	674	FSL	1766	FEL	40.33589	-104.81841	1.5	4722	SWSE
9	KAMMERZELL K 6-10	2023	FSL	2085	FEL	40.33957	-104.81958	1.7	4712	NWSE
10	KAMMERZELL K 6-23	1344	FSL	1297	FEL	40.33777	-104.81674	2.2	4706	NWSE
11	KAMMERZELL #2-16	673	FNL	1898	FEL	40.33219	-104.81876	1.9	4727	NWNE
13	KAMMERZELL K #6-22	2500	FSL	1310	FEL	40.34094	-104.81681	N/A	4712	NWSE

NOTE: THE ABANDONED WELL DATA SHOWN IN RED ABOVE WAS OBTAINED FROM COGCC SCOUT CARDS.

DATE: 8/15/2014
PROJECT#: 2013177