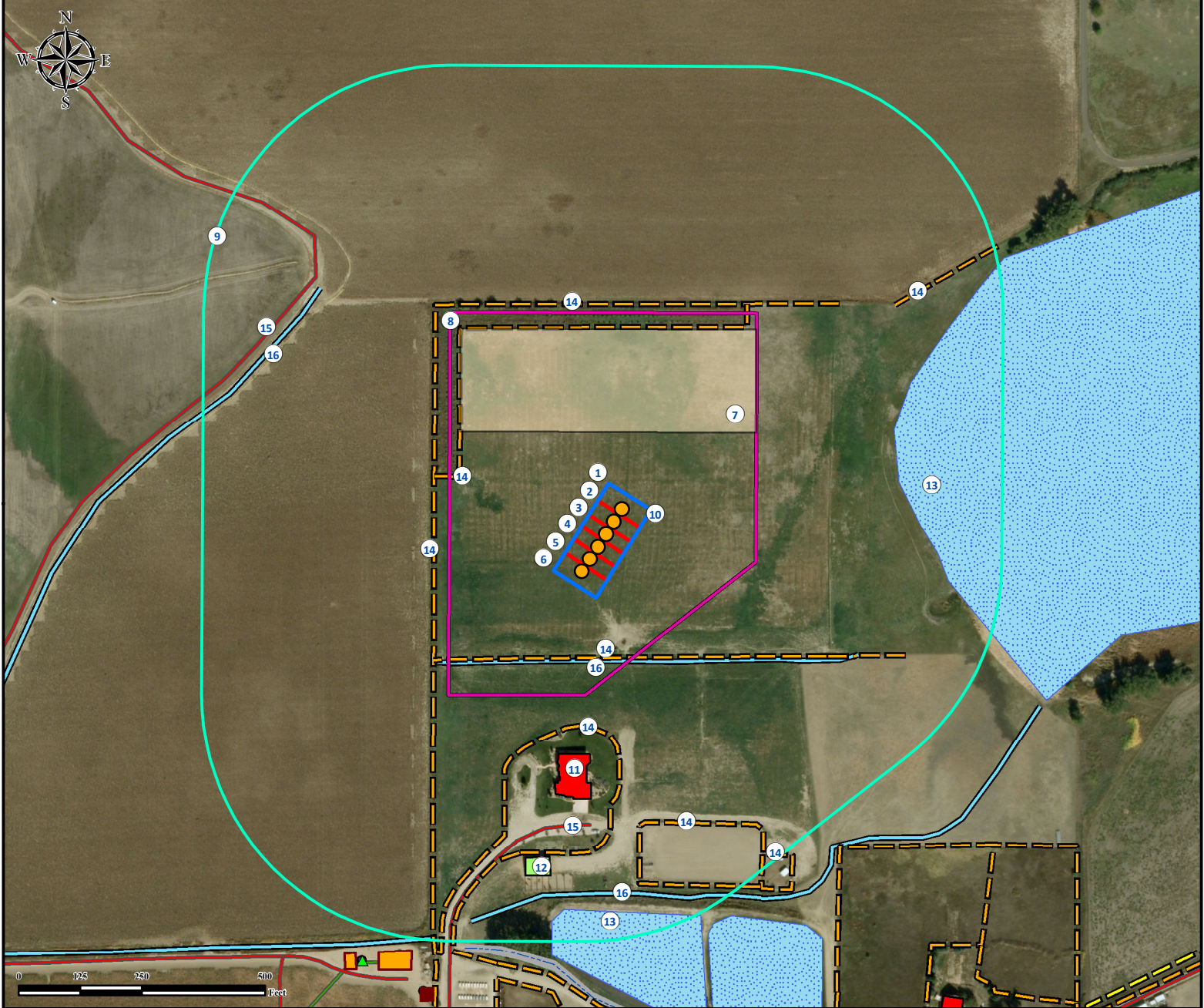


Location Drawing

DOCHEFF 12N - 13HZ

Horizontal Multi Well Pad

NE¼ SW¼ SECTION 14, TOWNSHIP 3 NORTH, RANGE 68 WEST OF THE 6TH PRINCIPAL MERIDIAN



1. Proposed Well DOCHIEFF 32C-13HZ.

2. Proposed Well DOCHIEFF 32N-15HZ.

3. Proposed Well DOCHIEFF 12N-13HZ.

4. Proposed Well DOCHIEFF 12C-15HZ.

5. Proposed Well DOCHIEFF 33N-13HZ.

6. Proposed Well DOCHIEFF 33N-15HZ.

7. Proposed Facility DOCHIEFF 12N-13HZ is ±207' N.

8. Operational Disturbance Area.

9. 500' Radius.

10. Pump Jack Operations Area.

11. Building Unit is ±447' S.

12. Building is ±663' SW.

13. Ponds are ±603' E and ±764' S.

14. Fences are ±250' S, ±320' NW, ±350' W, ±391' S, ±467' N, ±587' SE, ±721' SE, and ±748' NE.

15. Private Roads are ±589' S and ±793' NW.

16. Ditches are ±256' S, ±762' NW, and ±727' S.

Legend

- | | | |
|---|--|---|
| ● Proposed Well | Pump Jack Operations Area | Pond |
| ■ ECD | Proposed Facility | Ditch |
| ▲ EFM | Building Unit | Fence |
| Disturbance Area | Building | Public Road |
| 500' Radius | Facility Enclosure | Concrete Ditch |
| | | Pipeline |

Reference Location

** All measurements are made from Reference Well DOCHIEFF 12N-13HZ **

Lat: 40.224911° Long: -104.973706° (NAD83)
Elevation: 4934 Feet

Surface Use: Improved Pasture

Nearest Building Unit: ±447' S



Use our resources to find yours!
www.petro-fs.com
(303) 928-7128

Field Date: 05/09/2014
Drafting Date: 05/28/2014
Drafter: SMG
Revision: 1

Data Sources:

- Aerial courtesy of Anadarko Petroleum Corporation (2010)

Prepared for:

KERR-MCGEE OIL & GAS ONSHORE LP

