



T6S

T7S

TRACT 65

TRACT 62

Sec. 2

Sec. 1

TRACT 66

TRACT 63

#41A-2 Target
Bottom Hole

#41B-2 Target
Bottom Hole

#41C-2 Target
Bottom Hole

#41D-2 Target
Bottom Hole

#42A-2 Target
Bottom Hole

#42B-2 Target
Bottom Hole

#42C-2 Target
Bottom Hole

#42D-2 Target
Bottom Hole

#43A-2 Target
Bottom Hole

#43B-2 Target
Bottom Hole

#11D-1 Target
Bottom Hole

#12A-1 Target
Bottom Hole

#12B-1 Target
Bottom Hole

#12C-1 Target
Bottom Hole

#12D-1 Target
Bottom Hole

#13A-1 Target
Bottom Hole

#13B-1 Target
Bottom Hole

#13C-1 Target
Bottom Hole

LINE TABLE

LINE	DIRECTION	LENGTH
L1	N14°30'17"W	2040.51'
L2	N16°34'23"W	1716.80'
L3	N20°38'50"W	1417.64'
L4	N26°30'33"W	1110.13'
L5	N36°20'45"W	845.40'
L6	N54°15'33"W	620.04'
L7	N85°11'56"W	507.38'
L8	S61°27'28"W	578.07'
L9	S40°36'17"W	783.61'
L10	S29°16'45"W	1047.47'
L11	S50°43'55"E	1787.65'
L12	S59°09'13"E	1764.83'
L13	S63°12'08"E	1484.07'
L14	S71°43'02"E	1337.75'
L15	S88°23'32"E	1330.63'
L16	N75°17'58"E	1376.82'
L17	N57°34'42"E	1606.31'
L18	N48°24'46"E	1735.38'

LOT 6

LOT 5

LOT 8

LOT 7

SE 1/4

1/16 Section Line

SW 1/4

1/16 Section Line

Section Line

Section Line

NOTES:

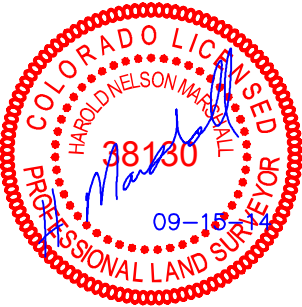
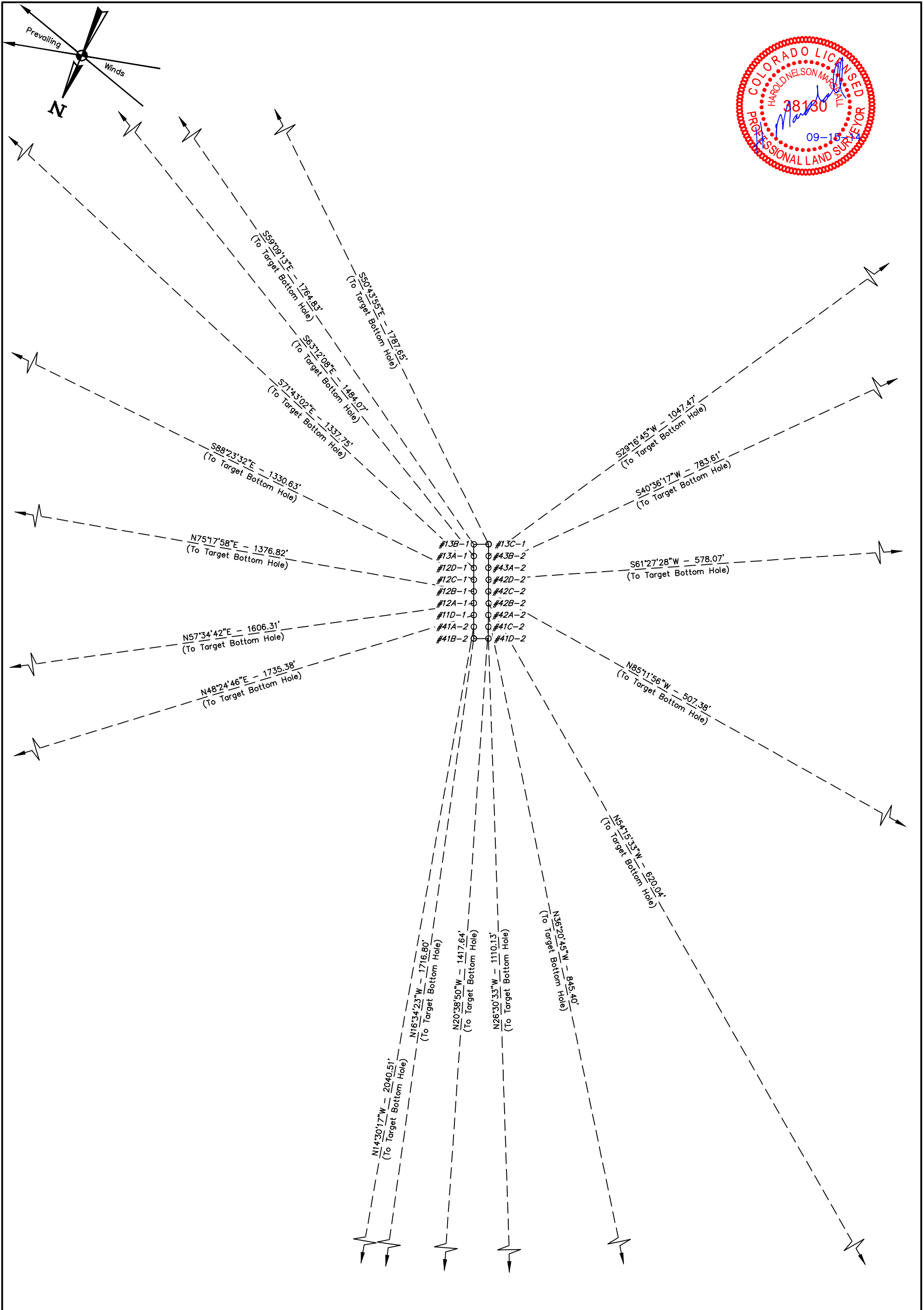
Caerus Oil & Gas LLC

MESA H2-797
TRACT 66, SECTION 2, T7S, R97W, 6th P.M.
SE 1/4 NE 1/4



UELS, LLC
Corporate Office * 85 South 200 East
Vernal, UT 84078 * (435) 789-1017

DRAWN BY: M.D.	DATE DRAWN: 09-12-14
SCALE: 1" = 500'	REVISED: 00-00-00
MULTI-WELL PLAN	FIGURE #7



Caerus Oil & Gas LLC

MESA H2-797
TRACT 66, SECTION 2, T7S, R97W, 6th P.M.
SE 1/4 NE 1/4



UELS, LLC
Corporate Office * 85 South 200 East
Vernal, UT 84078 * (435) 789-1017

DRAWN BY: M.D.	DATE DRAWN: 09-12-14
SCALE: 1" = 60'	REVISED: 00-00-00
TARGET BOTTOM HOLE DRAWING	FIGURE #6