

PROCEED IN A NORTHWESTERLY DIRECTION FROM PARACHUTE, COLORADO ALONG COUNTY ROAD 215 APPROXIMATELY 7.1 MILES TO THE JUNCTION OF THIS ROAD AND GARDEN GULCH ROAD TO THE NORTHWEST; TURN LEFT AND PROCEED IN A NORTHWESTERLY, THEN SOUTHWESTERLY THEN EASTERLY, THEN SOUTHERLY, THEN SOUTHWESTERLY DIRECTION APPROXIMATELY 8.4 MILES TO THE JUNCTION OF THIS ROAD AND AN EXISTING ROAD TO THE SOUTHEAST; TURN LEFT AND PROCEED IN A SOUTHEASTERLY, THEN SOUTHERLY DIRECTION APPROXIMATELY 2.5 MILES TO THE JUNCTION OF THIS ROAD AND BEGINNING OF THE PROPOSED ACCESS ROAD TO THE WEST; FOLLOW ROAD FLAGS IN A WESTERLY, THEN SOUTHWESTERLY DIRECTION APPROXIMATELY 600' TO THE PROPOSED LOCATION.

TOTAL DISTANCE FROM PARACHUTE, COLORADO TO THE PROPOSED WELL LOCATION IS APPROXIMATELY 18.1 MILES.

**Caerus Oil & Gas LLC**

**MESA H2-797  
TRACT 66, SECTION 2, T7S, R97W, 6th P.M.  
SE 1/4 NE 1/4**



**UELS, LLC**  
Corporate Office \* 85 South 200 East  
Vernal, UT 84078 \* (435) 789-1017

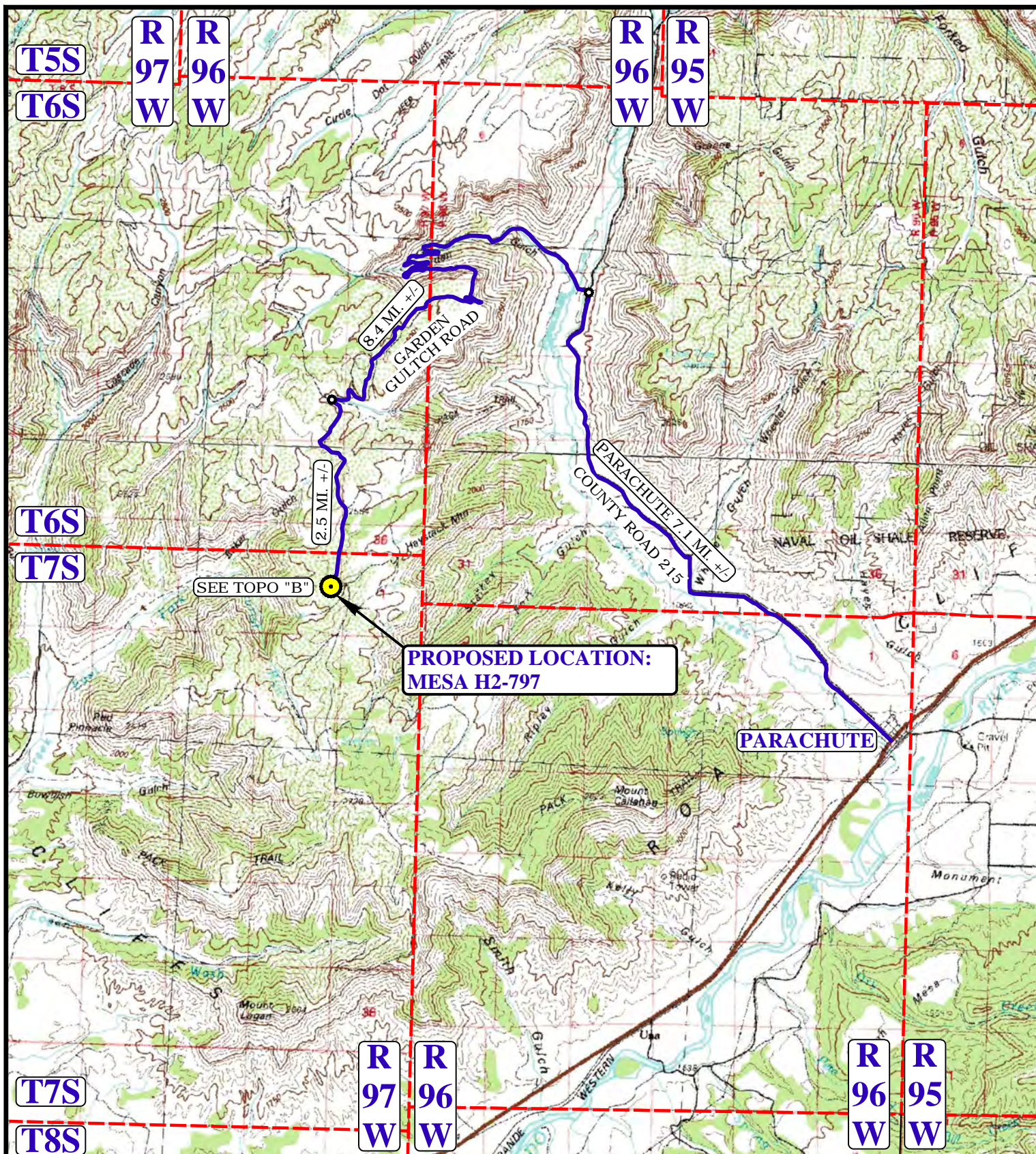
DRAWN BY: C.M.F.

DATE DRAWN: 08-27-14

REVISED: 00-00-00

**ROAD DESCRIPTION**





# LEGEND:

- PROPOSED LOCATION
- ACCESS ROAD



**UELS, LLC**  
 Corporate Office \* 85 South 200 East  
 Vernal, UT 84078 \* (435) 789-1017

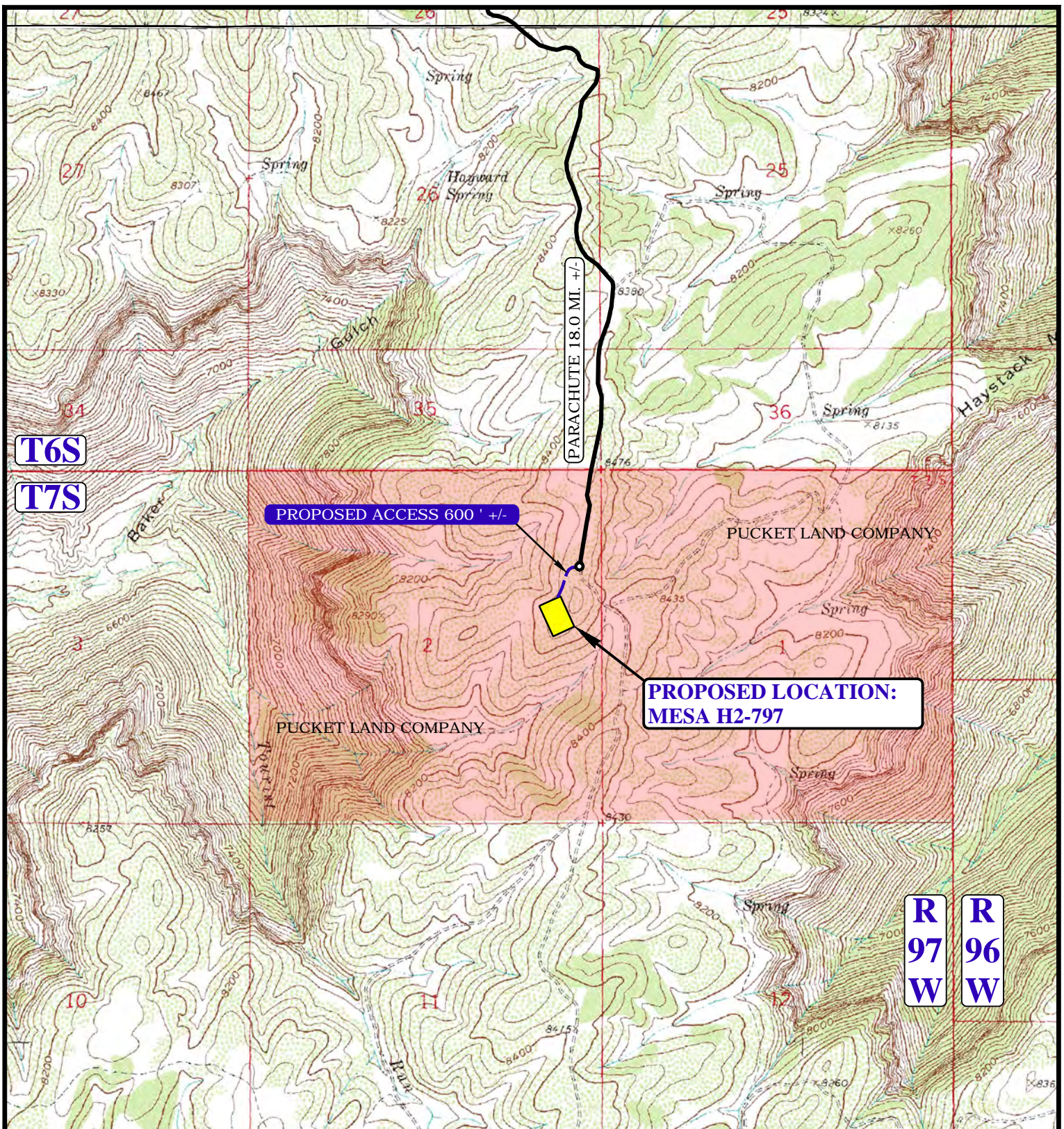


**Caerus Oil & Gas LLC**

**MESA H2-797**  
**TRACT 66, SECTION 2, T7S, R97W, 6th P.M.**  
**SE 1/4 NE 1/4**

DRAWN BY: C.M.F.	DATE DRAWN: 08-27-14
SCALE: 1:100,000	REVISED: 00-00-00
<b>ACCESS ROAD MAP</b>	<b>TOPO A</b>





NOTE: PARCEL DATA SHOWN HAS BEEN OBTAINED FROM VARIOUS SOURCES AND SHOULD BE USED FOR MAPPING, GRAPHIC AND PLANNING PURPOSES ONLY. NO WARRANTY IS MADE BY UINTAH ENGINEERING AND LAND SURVEYING (UELS) FOR ACCURACY OF THE PARCEL DATA.

#### LEGEND:

— EXISTING ROAD  
 - - - PROPOSED ROAD

#### Caerus Oil & Gas LLC

MESA H2-797  
 TRACT 66, SECTION 2, T7S, R97W, 6th P.M.  
 SE 1/4 NE 1/4

DRAWN BY: C.M.F.

DATE DRAWN: 08-27-14

SCALE: 1" = 2000'

REVISED: 00-00-00

ACCESS ROAD MAP

TOPO B

UELS, LLC

Corporate Office \* 85 South 200 East  
 Vernal, UT 84078 \* (435) 789-1017

