



TRISHA LC29-76HNB

TVD
1" : 100'

Company: NOBLE ENERGY
Well Name: TRISHA LC29-76HNB
API: 05-123-38779
Rig Id: H&P 326
State: CO
County/Parish: WELD
Country: USA
Survey Company: DrilTech L.L.C.
Job number: 2014-178-DCDT-CO

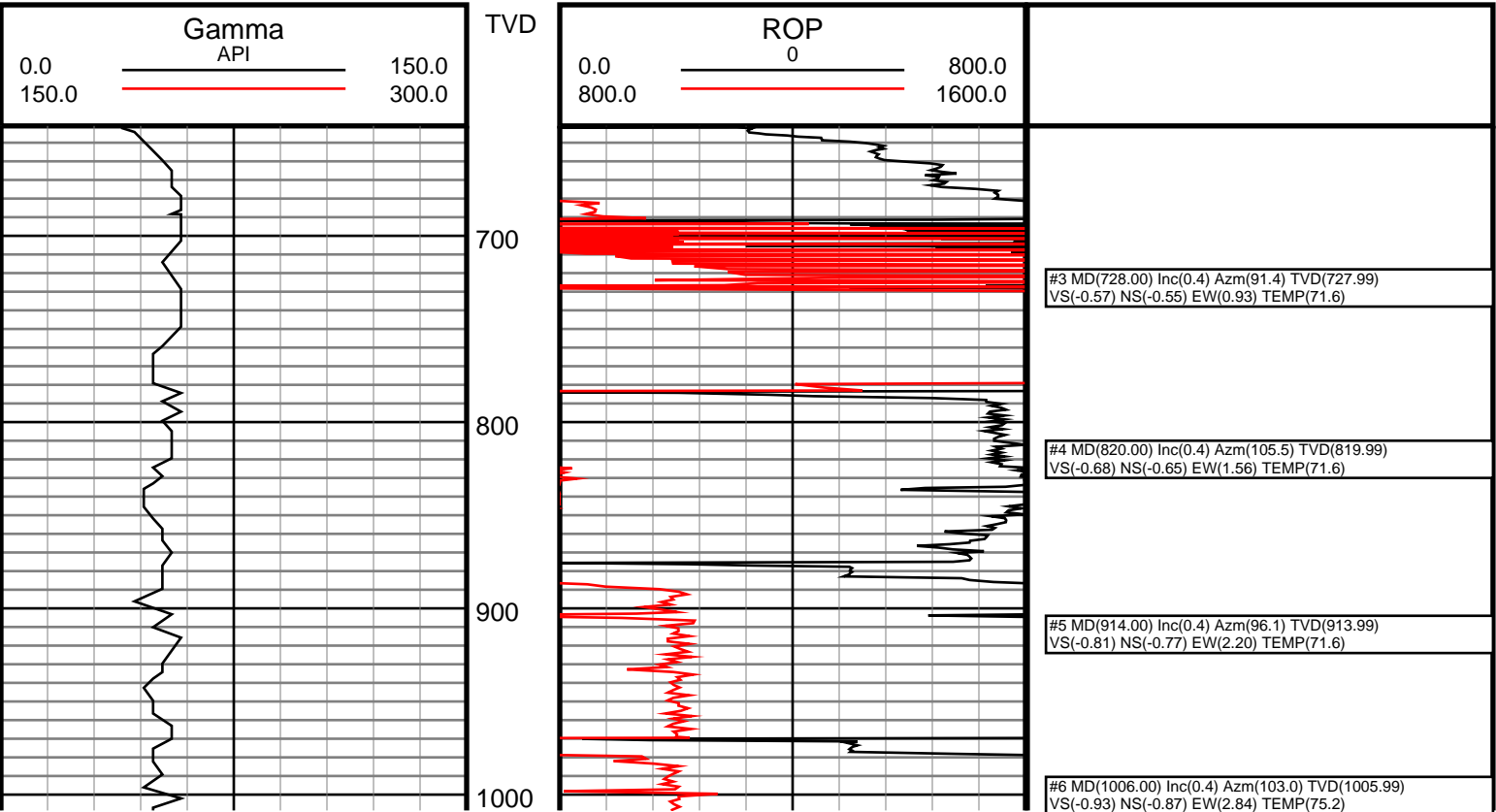
Log measurements:
Depth measured from: 641
Maximum temperature: 231.1

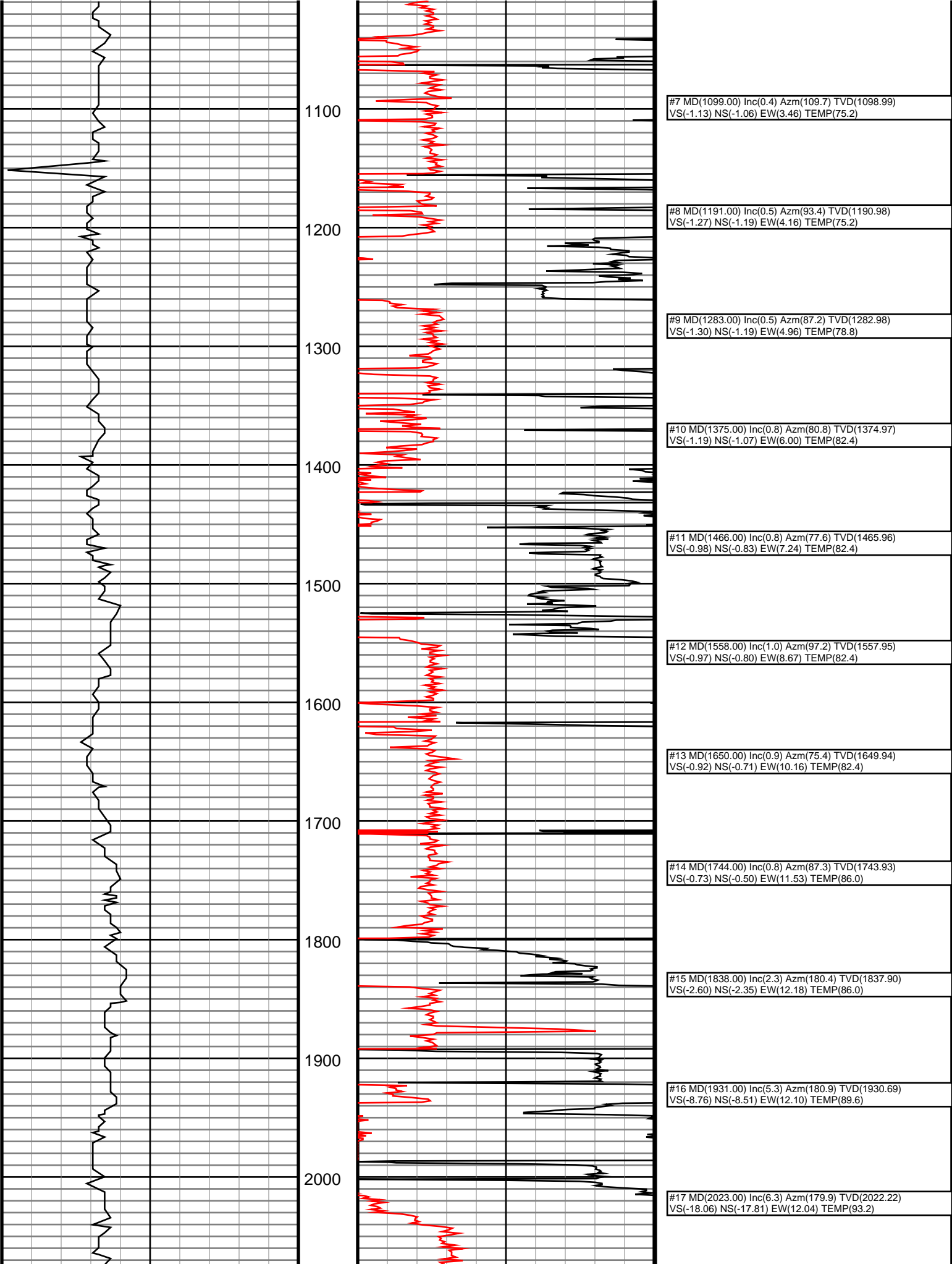
Depth Date
Start: 641 ft 4/25/14
End: 15585 ft 5/4/14

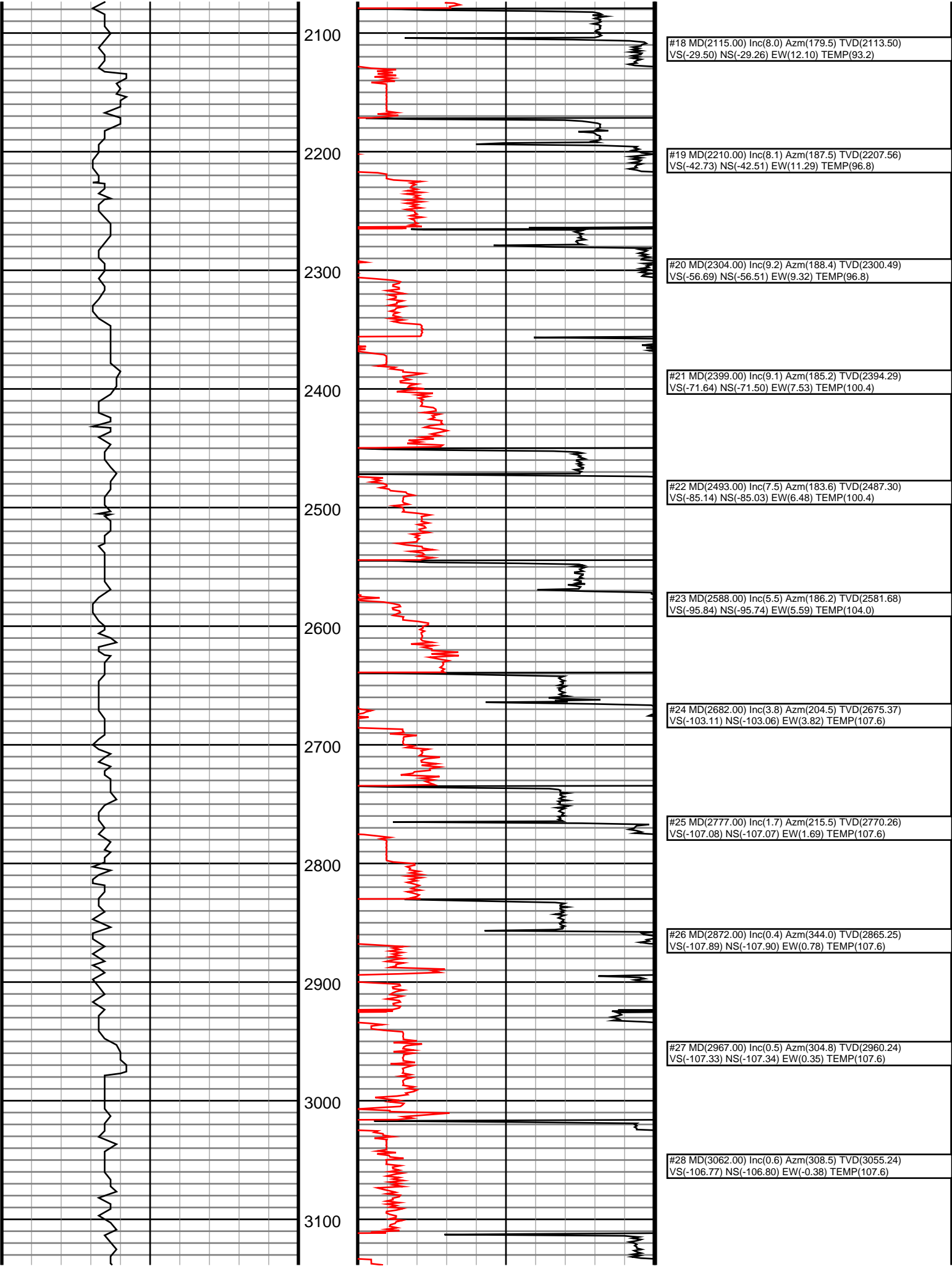
Casing Depth Size	Mud Type: WB	Elevations
Surface: 631 9 5/8	Density: 10.2	KB: 0
Intermediate: 6497 7	Viscosity: 40	GL: 4879
	Rm:	DF: 30
	Rmf:	
	Rmc:	

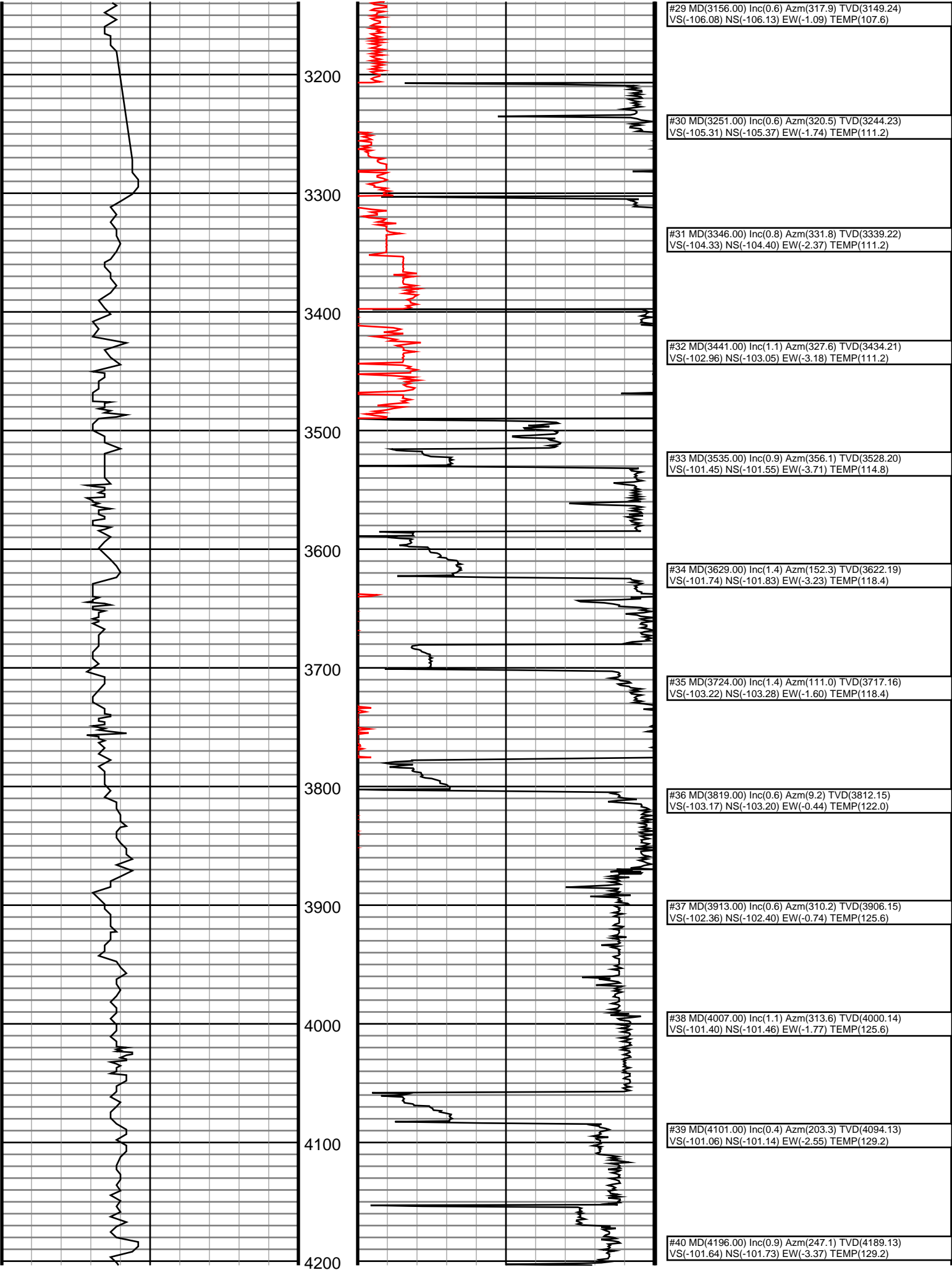
Run	Bit Size	Gamma	Offsets	Survey	Start	End	Dates	Start	End
1	8 3/4	39.31	53.91	641	5375	4/25/14	4/26/14		
2	8 3/4	39.31	53.91	5375	5375	4/27/14	4/28/14		
3	8 3/4	39.31	53.91	5375	6506	4/28/14	4/28/14		
4	6 1/8	43.64	57.64	6506	15585	4/30/14	5/5/14		
5									
6									
7									
8									
9									
10									

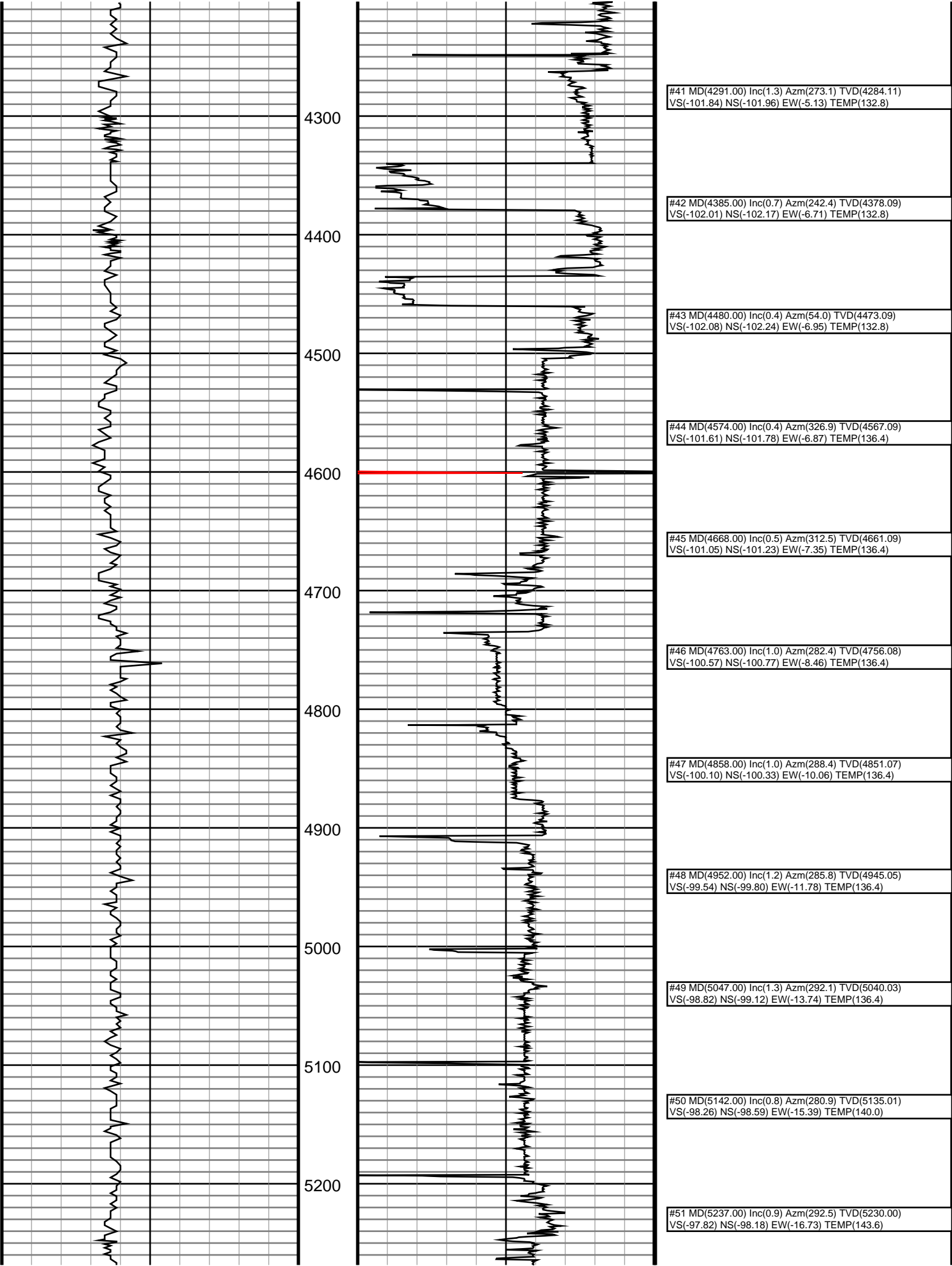
DrilTech L.L.C. uses its best efforts to provide its customers with accurate information and interpretations in conjunction with services performed but will not be held liable or responsible for the accuracy of such information or interpretation.

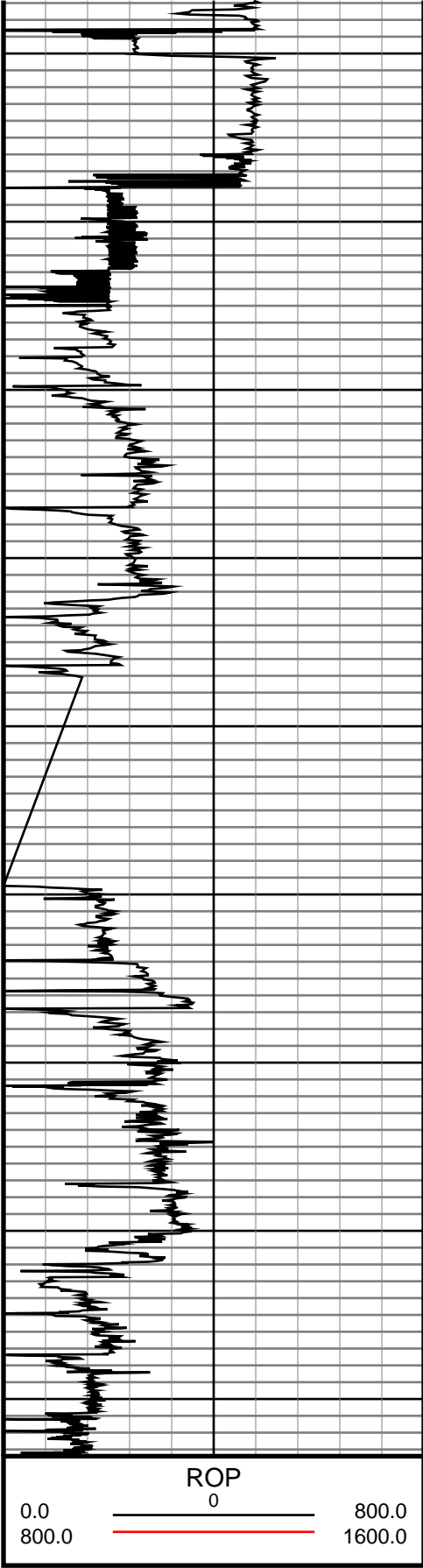
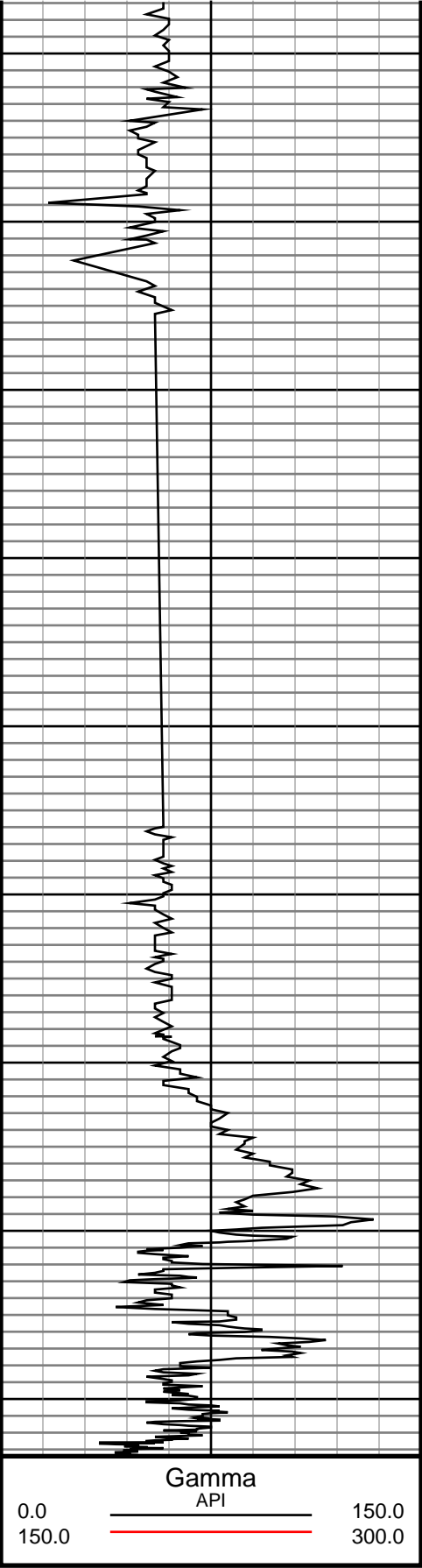












#52 MD(5319.00) Inc(1.0) Azm(279.3) TVD(5311.99)
VS(-97.43) NS(-97.82) EW(-18.03) TEMP(143.6)

#53 MD(5425.00) Inc(0.9) Azm(304.5) TVD(5417.97)
VS(-96.77) NS(-97.20) EW(-19.63) TEMP(118.4)

#54 MD(5520.00) Inc(3.5) Azm(69.9) TVD(5512.92)
VS(-95.40) NS(-95.78) EW(-17.52) TEMP(118.4)

#55 MD(5614.00) Inc(8.1) Azm(39.3) TVD(5606.43)
VS(-89.43) NS(-89.66) EW(-10.63) TEMP(118.4)

#56 MD(5709.00) Inc(13.2) Azm(353.6) TVD(5699.92)
VS(-73.50) NS(-73.67) EW(-7.59) TEMP(118.4)

#57 MD(5804.00) Inc(28.8) Azm(352.7) TVD(5788.33)
VS(-39.73) NS(-39.98) EW(-11.73) TEMP(125.6)

#58 MD(5898.00) Inc(36.1) Azm(356.3) TVD(5867.61)
VS(10.52) NS(10.18) EW(-16.40) TEMP(129.2)

#59 MD(5993.00) Inc(48.9) Azm(355.7) TVD(5937.51)
VS(74.48) NS(74.07) EW(-20.91) TEMP(129.2)

#60 MD(6087.00) Inc(57.9) Azm(1.0) TVD(5993.52)
VS(149.82) NS(149.39) EW(-22.88) TEMP(132.8)

#61 MD(6182.00) Inc(57.2) Azm(358.3) TVD(6044.50)
VS(229.97) NS(229.54) EW(-23.36) TEMP(132.8)

#63 MD(6370.00) Inc(76.2) Azm(359.2) TVD(6121.81)
VS(400.38) NS(399.88) EW(-27.99) TEMP(136.4)

#64 MD(6447.00) Inc(86.4) Azm(2.2) TVD(6133.45)
VS(476.94) NS(475.68) EW(-27.94) TEMP(146.8)