

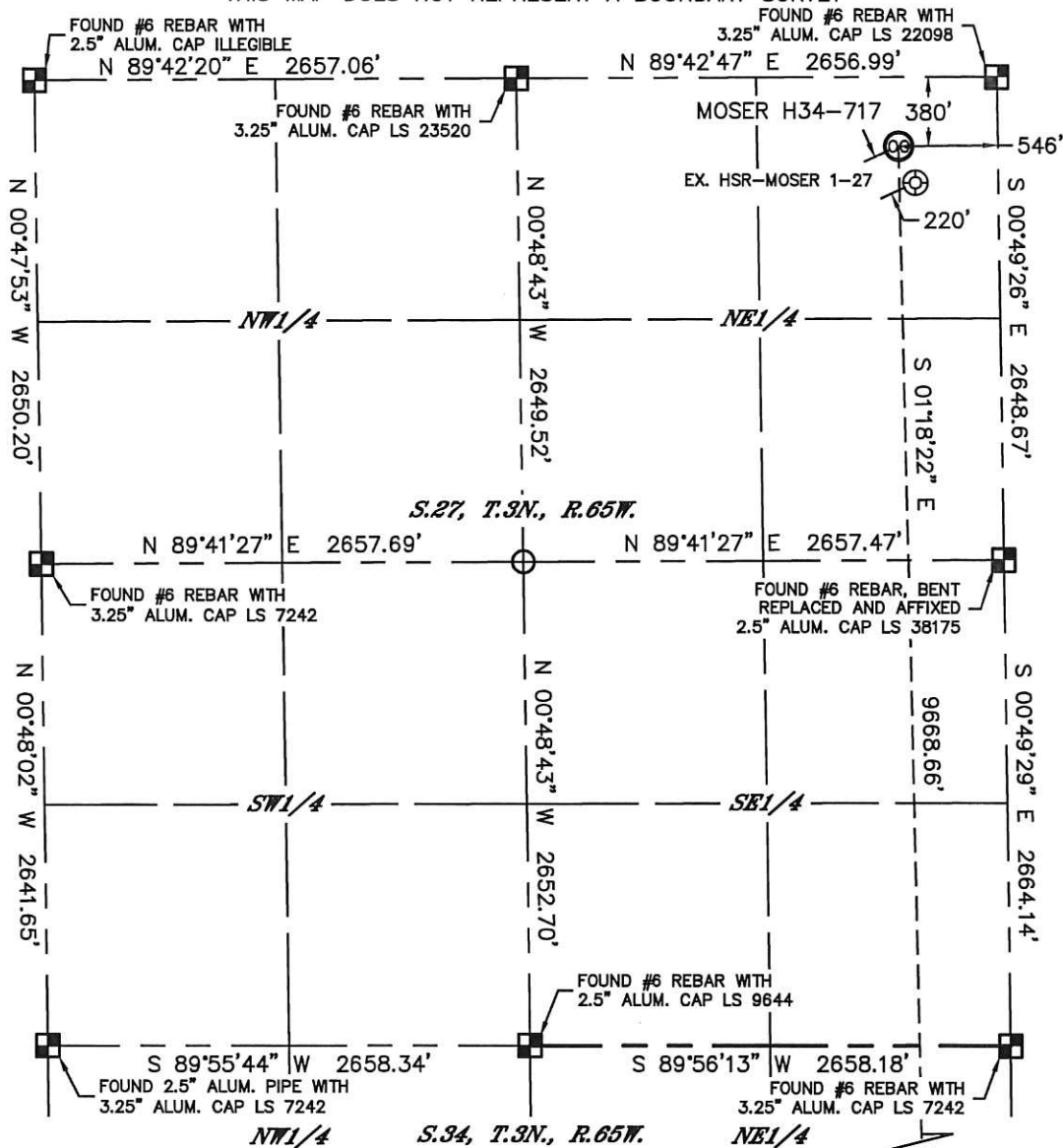


Lat40°, Inc. 1635 Foxtrail Drive, Suite 325 Loveland, CO 970-776-3321

WELL LOCATION CERTIFICATE

SECTION: 27
TOWNSHIP: 3N
RANGE: 65W

THIS MAP DOES NOT REPRESENT A BOUNDARY SURVEY



In accordance with a request from Mike Rodine with Noble Energy Inc. Lat40°, Inc. has determined the surface location of the MOSER H34-717 to be 380' from the NORTH line and 546' from the EAST line as measured at right angles from the section lines of Section 27, Township 3 North, Range 65 West and the bottom hole to be 540' from the SOUTH line and 433' from the EAST line as measured at right angles from the section lines of Section 34, Township 3 North, Range 65 West of the Sixth Principal Meridian, County of Weld, State of Colorado.

I hereby state that this Well Location Certificate was prepared by me, or under my direct supervision, that the fieldwork was completed on 3/13/2014, for and on behalf of Noble Energy Inc. That this is not a Land Survey Plat or an Improvement Survey Plat, and that it is not to be relied upon for establishment of fence, building, or other future Improvement lines.

NOTE:

- 1) Bearings shown are Grid Bearings of the Colorado State Plane Coordinate System, North Zone, North American Datum 1983/2007. The lineal dimensions as contained herein are based upon the "U.S. Survey Foot."
- 2) Ground elevations are based on an observed GPS elevation (NAVD 1988 DATUM).
- 3) IMPROVEMENTS: See LOCATION DRAWING for all visible Improvements within 500' of disturbed area.
- 4) SURFACE USE: OLD CROP LAND
- 5) INSTRUMENT OPERATOR: BRIAN ROTTINGHAUS
- 6) NEAREST EXISTING WELL: HSR-MOSER 1-27, 220' SE
- NEAREST CULTURAL ITEMS:
BUILDING: ±1832' NE
BUILDING UNIT: ±1832' NE
HIGH OCCUPANCY BUILDING UNIT: 5280'+
DESIGNATED OUTSIDE ACTIVITY AREA: 5280'+
PUBLIC ROAD: 366' N (CR 30)
ABOVEGROUND UTILITY: 344' N
RAILROAD: 5280'+
PROPERTY LINE: 380' N

SURFACE LOCATION

LAT: 40.20259°N
LONG: 104.64220°W
PDOP: 1.9
ELEV: 4812'
1/4, 1/4: NENE

BOTTOM HOLE

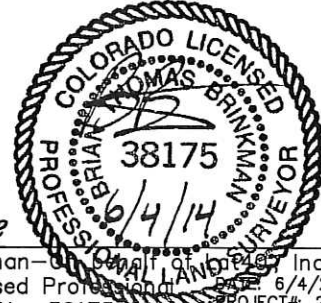
LAT: 40.17606°N
LONG: 104.64174°W

LEGEND

- = ALIQUOT MONUMENT AS DESCRIBED
○ = CALCULATED POSITION

SHEET 1 OF 2

Brian T. Brinkman—
Colorado Licensed Professional Land Surveyor No. 38175
PROJECT#: 2013178





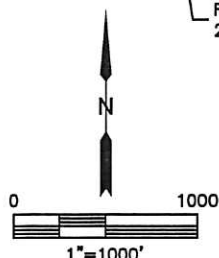
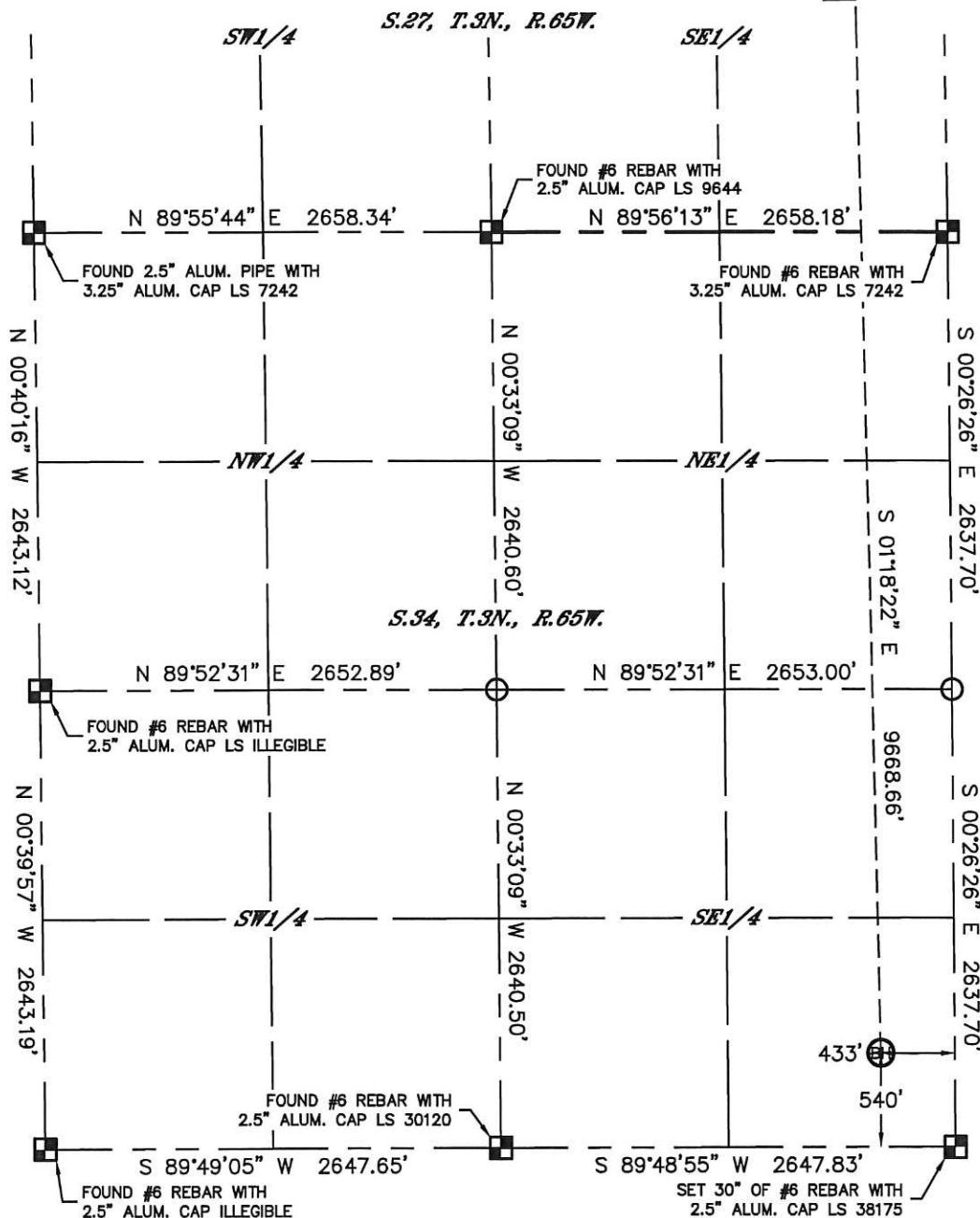
Lat40°, Inc. 1635 Foxtrail Drive, Suite 325 Loveland, CO 970-776-3321

WELL LOCATION CERTIFICATE

THIS MAP DOES NOT REPRESENT A BOUNDARY SURVEY

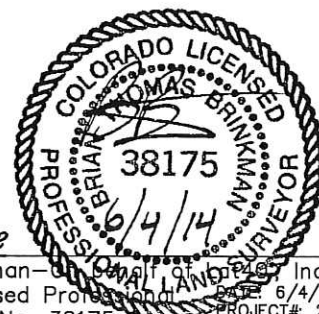
SECTION: 27
TOWNSHIP: 3N
RANGE: 65W

MOSER H34-717



LEGEND

- = ALIQUOT MONUMENT AS DESCRIBED
- = CALCULATED POSITION



SHEET 2 OF 2

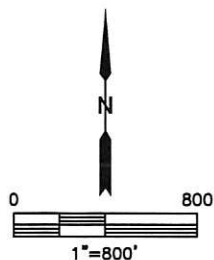
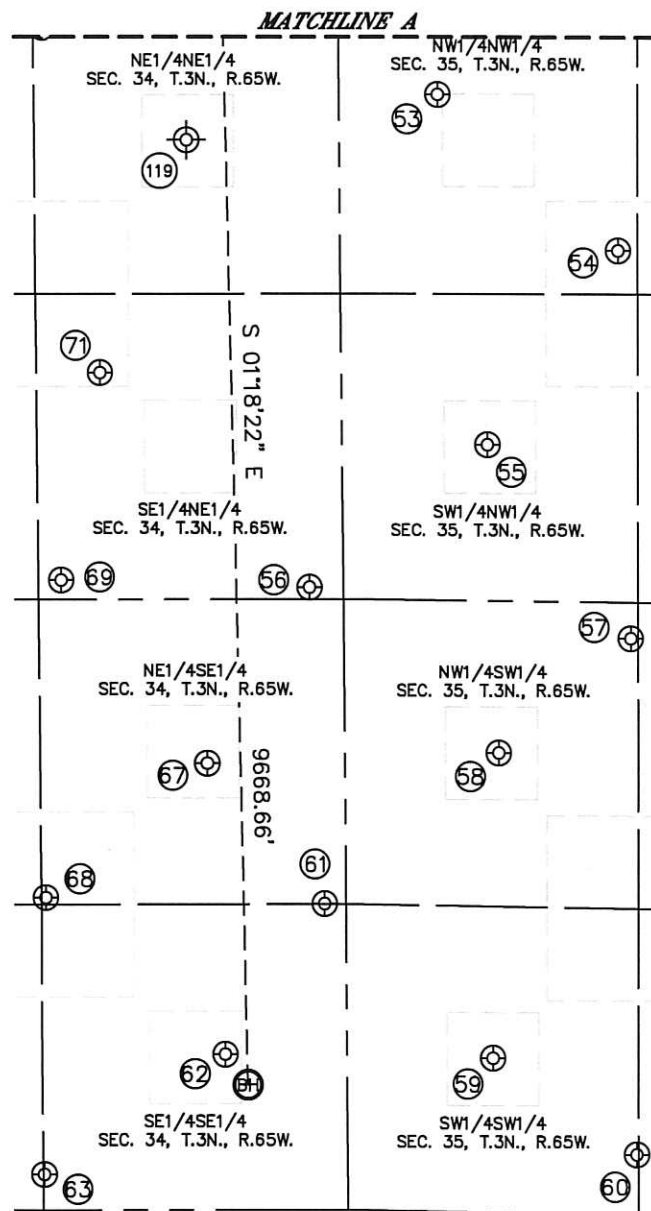
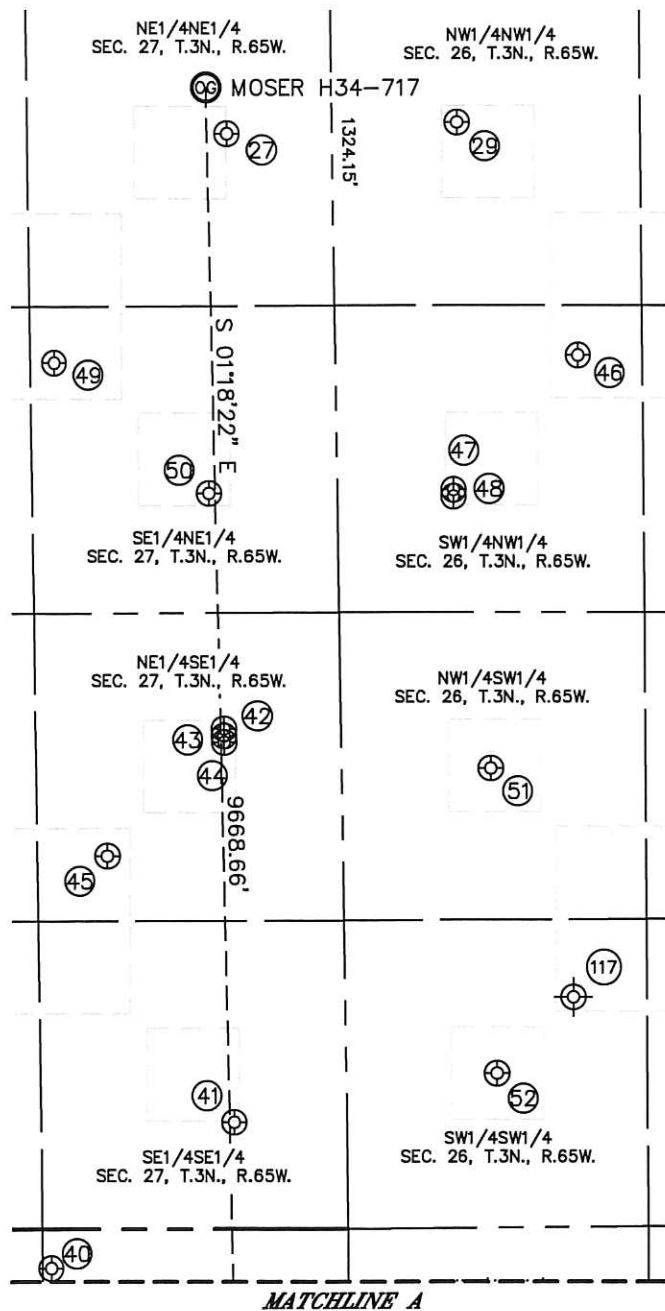
Brian T. Brinkman—Owner, Lat40°, Inc.
Colorado Licensed Professional Land Surveyor No. 38175
Date: 6/4/2014
PROJECT#: 2013178

Lat40°, Inc. 1635 Foxtrail Drive, Suite 325 Loveland, CO 970-776-3321

SITE SKETCH

MOSER H34-717

SECTION: 27
TOWNSHIP: 3N
RANGE: 65W



SHEET 1 OF 2

DATE: 6/4/2014
PROJECT#: 2013178



Lat40°, Inc. 1635 Foxtrail Drive, Suite 325 Loveland, CO 970-776-3321

SITE SKETCH

MOSER H34-717

SECTION: 27
TOWNSHIP: 3N
RANGE: 65W

WELL NO.	WELL NAME	SHL FOOTAGE				SHL LAT°	SHL LONG°	PDOP	ELEV (FT.)	1/4/1/4
27	HSR-MOSER 1-27	581	FNL	458	FEL	40.20204	-104.64188	3.0	4812	NENE
29	HSR-MOSER 4-26	534	FNL	538	FWL	40.20215	-104.63831	2.9	4816	NWNW
40	MOSER H 34-27	169	FNL	1292	FEL	40.18861	-104.64478	2.2	4826	NENE
41	HSR-MOSER 16-27	461	FSL	488	FEL	40.19032	-104.64191	3.0	4822	SESE
42	MOSER 24-27	2161	FSL	510	FEL	40.19499	-104.64202	3.1	4820	NESE
43	MOSER 9-27X (P/A)	2130	FSL	510	FEL	40.19490	-104.64202	3.1	4821	NESE
44	MOSER 39-27	2101	FSL	509	FEL	40.19482	-104.64202	3.1	4821	NESE
45	HSR-THORSON 9-27	1610	FSL	1024	FEL	40.19349	-104.64385	1.9	4818	NESE
46	HSR-REGALIA 5-26	1541	FNL	1050	FWL	40.19937	-104.63647	1.8	4818	SWNW
47	MOSER 41-27	2121	FNL	500	FWL	40.19779	-104.63842	1.8	4820	SWNW
48	MOSER 5-26	2150	FNL	500	FWL	40.19772	-104.63842	1.8	4820	SWNW
49	UPRR 53 PAN AM "O" #1	1567	FNL	1224	FEL	40.19934	-104.64460	1.7	4815	SENE
50	MOSER FARMS UPRR 42-27 #3	2133	FNL	559	FEL	40.19778	-104.64221	2.1	4816	SENE
51	MOSER H26-12	1983	FSL	644	FWL	40.19449	-104.63789	1.9	4823	NWSW
52	MOSER H26-13	664	FSL	654	FWL	40.19087	-104.63783	1.9	4830	SWSW
53	HSR-FOSTER 4-35	462	FNL	432	FWL	40.18778	-104.63862	1.4	4827	NWNW
54	FOSTER 18-35	1143	FNL	1212	FWL	40.18591	-104.63583	1.4	4836	NWNW
55	HSR-FOSTER 5-35	1975	FNL	636	FWL	40.18362	-104.63790	1.5	4834	SWNW
56	MOSER H35-32	2587	FNL	148	FEL	40.18195	-104.64071	1.4	4833	SENE
57	CANNON H35-20	2490	FSL	1254	FWL	40.18131	-104.63569	1.7	4846	NWSW
58	CANNON H35-12	1984	FSL	674	FWL	40.17997	-104.63777	1.8	4839	NWSW
59	CANNON H35-13	666	FSL	638	FWL	40.17635	-104.63791	1.8	4840	SWSW
60	CANNON X02-29	261	FSL	1263	FWL	40.17519	-104.63568	1.9	4847	SWSW
61	MOSER H 35-33	1321	FSL	94	FEL	40.17819	-104.64052	1.8	4839	NESE
62	MOSER H 34-16	672	FSL	531	FEL	40.17642	-104.64209	1.9	4838	SESE
63	MOSER X 3-27	156	FSL	1320	FEL	40.17502	-104.64492	1.9	4842	SESE
67	MOSER H 34-09	1929	FSL	599	FEL	40.17987	-104.64233	2.1	4835	NESE
68	MOSER H 34-23	1351	FSL	1306	FEL	40.17830	-104.64486	2.1	4836	NESE
69	MOSER H 34-22	2558	FNL	1229	FEL	40.18206	-104.64458	2.1	4832	SENE
71	MOSER H 34-08	1660	FNL	1051	FEL	40.18452	-104.64393	1.9	4828	SENE
117	MOSER, WESLEY E.G.U.B #1 (P/A)	990	FSL	990	FWL	40.19179	-104.63657	N/A	4832	SWSW
119	MOSER H #34-1 (P/A)	655	FNL	665	FEL	40.18715	-104.64253	N/A	4823	NENE

NOTE: THE ABANDONED WELL DATA SHOWN IN RED ABOVE WAS OBTAINED FROM COGCC SCOUT CARDS.

SHEET 2 OF 2

DATE: rev6/27/2014
PROJECT#: 2013178