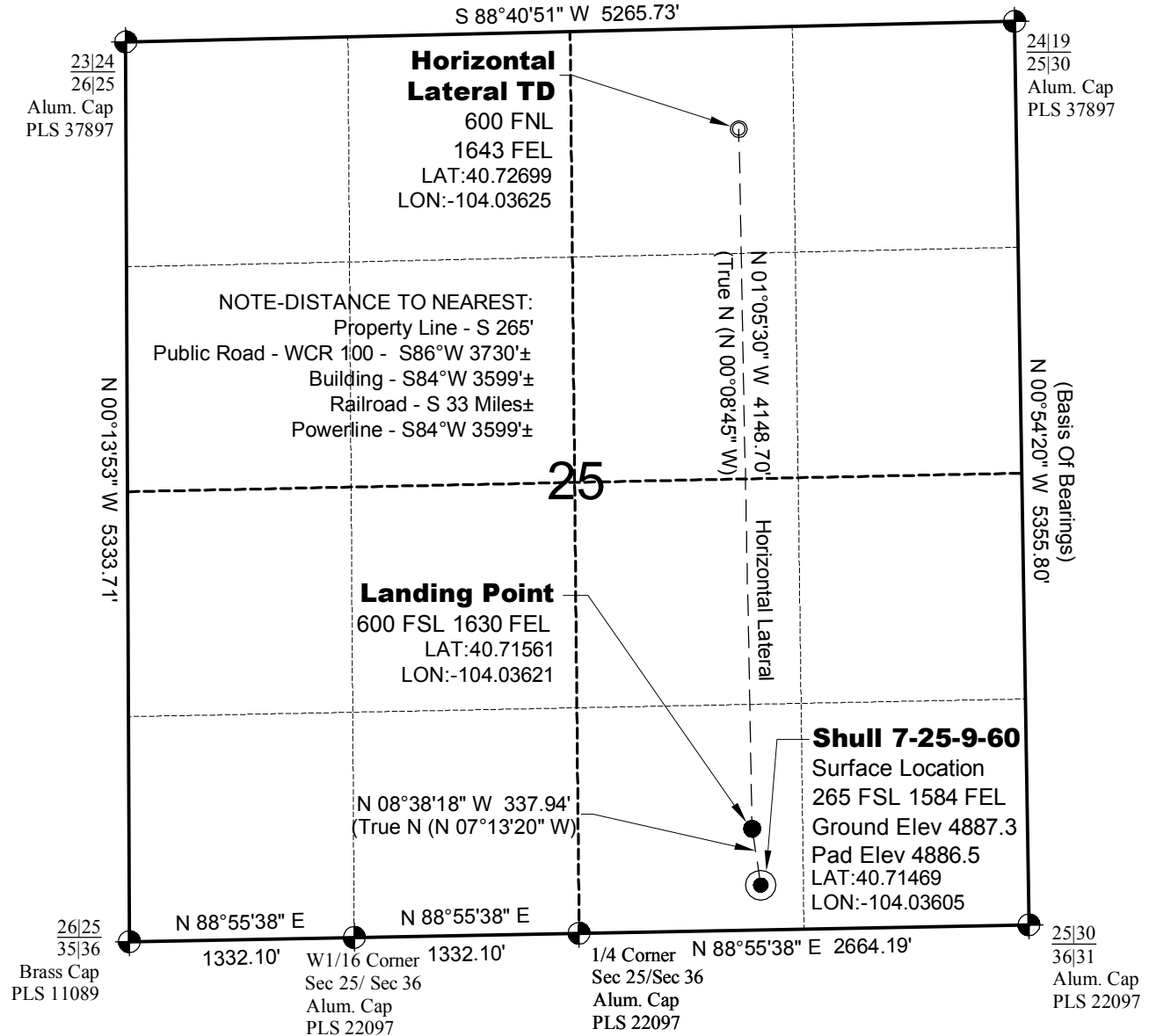


# WELL LOCATION MAP

**SHULL  
1-25-9-60 PAD**

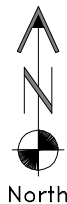


## SURVEYOR'S STATEMENT

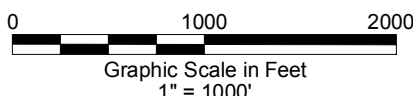
The undersigned hereby states that the well location shown hereon was staked on the ground based on existing monumentation and/or physical evidence found in the field and is correct to the best of my knowledge, information and belief.

## NOTES

- 1.) Horizontal coordinates based on NGS control point "SNOW" and vertical datum based on NGS control point "G 209" with an elevation of 4955.32. NAVD 1988.
  - 2.) All directions, distances, and dimensions shown hereon are based on coordinates from the "Colorado coordinate system of 1983 north zone" (article 52 of title 38, C.R.S.).
  - 3.) All section line dimensions shown hereon are based on field measurements of existing monuments and/or physical evidence found in the field unless otherwise indicated.
  - 4.) Physical features shown hereon are for graphical representation only.
  - 5.) See Form 2A for visible improvements within 500' of wellhead.
  - 6.) Distances to nearest section lines are measured perpendicularly.
  - 7.) This is not a land survey nor land survey plat.
  - 8.) Date of Survey 9/17/14; Date of Drawing 9/29/14. REV 1
- PDOP Reading: 1.9 Instrument Operator: Marc Woodard



North



**CARRIZO OIL & GAS, INC**  
**SHULL 7-25-9-60**

**SL SW1/4 SE1/4 SEC. 25 T9N R60W**  
**HL TD NW1/4 NE1/4 SEC. 25 T9N R60W**  
**6th PM WELD COUNTY COLORADO**