



# Kerr-McGee Oil & Gas Onshore LP

A subsidiary of Anadarko Petroleum Corporation

1099 18<sup>th</sup> Street  
Denver, CO 80202  
720-929-6000

September 26, 2014

Department of Natural Resources  
Oil and Gas Conservation Commission  
The Chancery Building  
1120 Lincoln St., Suite 801  
Denver, CO 80203

Re: **30 Day Certification Letter - 318A.e**  
GREENLEAF 27N-2HZ  
Township 2 North, Range 65 West, Section 2: SW/4SE/4  
Unit Spacing: 02N-65W-02 E/2  
02N-65W-11 N/2NE/4  
Weld County, Colorado

Ladies/Gentlemen:

Kerr-McGee Oil and Gas Onshore LP ("KMG") hereby certifies to the Director that a thirty (30) day notice has been given by certified mail to all owners in the proposed wellbore spacing unit. We have not received any objections to such well location, proposed spacing unit, or additional producing formation. KMG hereby requests the Director to approve the boundary well.

If you have any questions or issues regarding this permit, please contact Cheryl Light at (720) 929-6461.

Very truly yours,

**Kerr-McGee Oil and Gas Onshore LP**

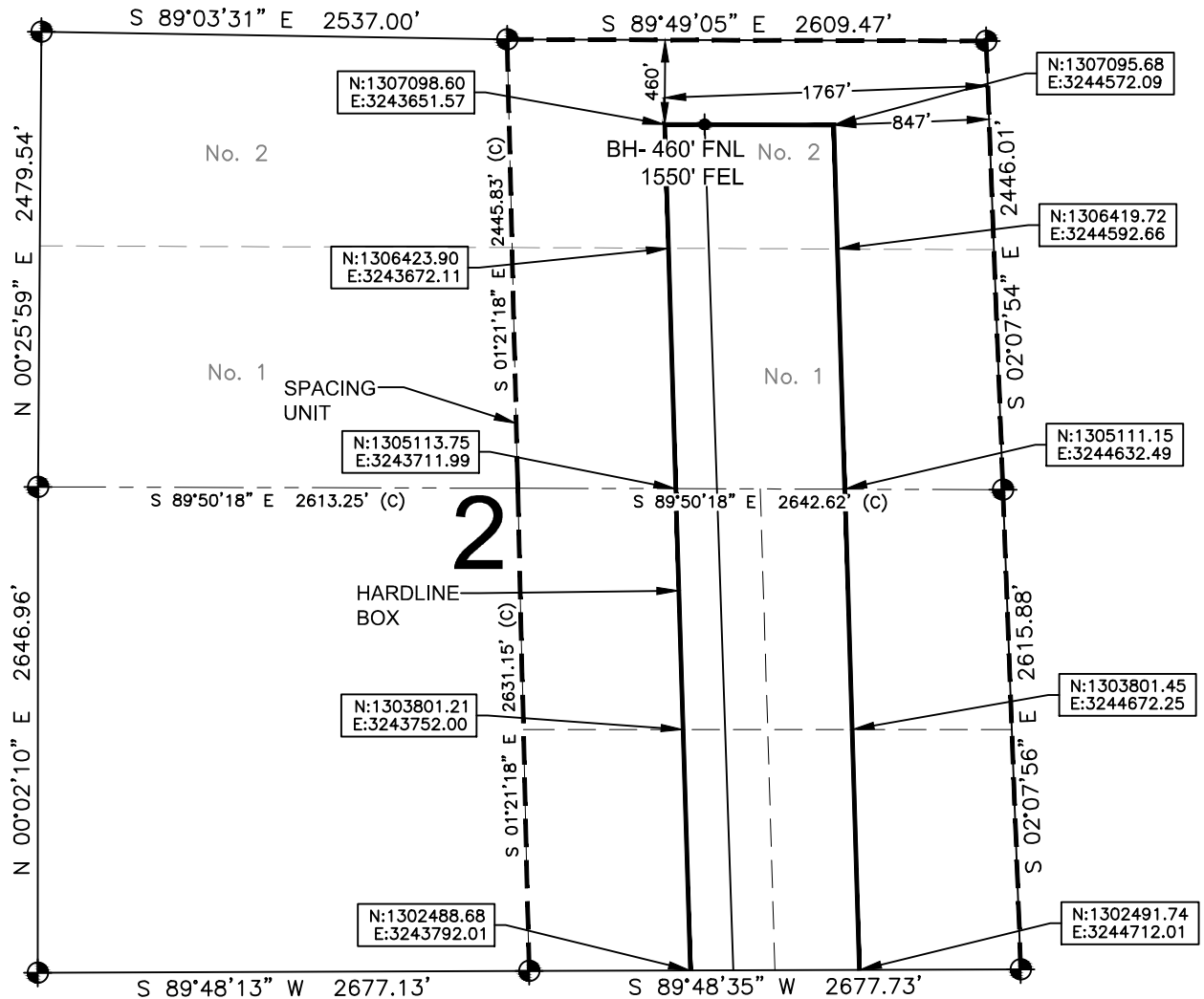
A handwritten signature in black ink, appearing to read 'Mike McConaughy', written in a cursive style.

**Mike McConaughy**  
**Sr. Regulatory Analyst**

Enclosure

# HARDLINE EXHIBIT: GREENLEAF 27N-2HZ

SECTION 2, TOWNSHIP 2 NORTH, RANGE 65 WEST, 6TH P.M.



## LEGEND

- = EXISTING MONUMENT
- = PROPOSED HEEL
- = CALCULATED POSITION
- ◆ = BOTTOM HOLE
- BH = BOTTOM HOLE

## HEEL LOCATION

NAD83  
LATITUDE= 40.159195°  
LONGITUDE= 104.626852°  
  
LATITUDE= 40°09'33.103"  
LONGITUDE= 104°37'36.669"

## QRT/QRT SECTIONS WITHIN PATH OF THE HARDLINE

SWSE, SEC. 2      SESE, SEC. 2  
NWSE, SEC. 2      NESE, SEC. 2  
  
LOT 1, NE 1/4 SEC. 2  
LOT 2, NE 1/4 SEC. 2

## BOTTOM HOLE LOCATION

NAD83  
LATITUDE= 40.173085°  
LONGITUDE= 104.627290°  
  
LATITUDE= 40°10'23.107"  
LONGITUDE= 104°37'38.243"

## AVAILABLE FOOTAGE

5478'

## NOTES:

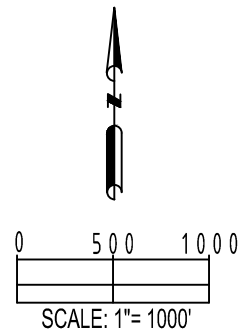
- THIS DOCUMENT IS NOT A LAND SURVEY PLAT OR IMPROVEMENT SURVEY PLAT. THIS DOCUMENT DOES NOT REFLECT A FIELD SURVEY. SECTION BREAKDOWN, MONUMENTATION AND HORIZONTAL POSITIONS SHOWN ARE BASED ON THE HEEL AND BOTTOM HOLE LOCATION PROVIDED BY ANADARKO PETROLEUM CORPORATION

PREPARED BY:



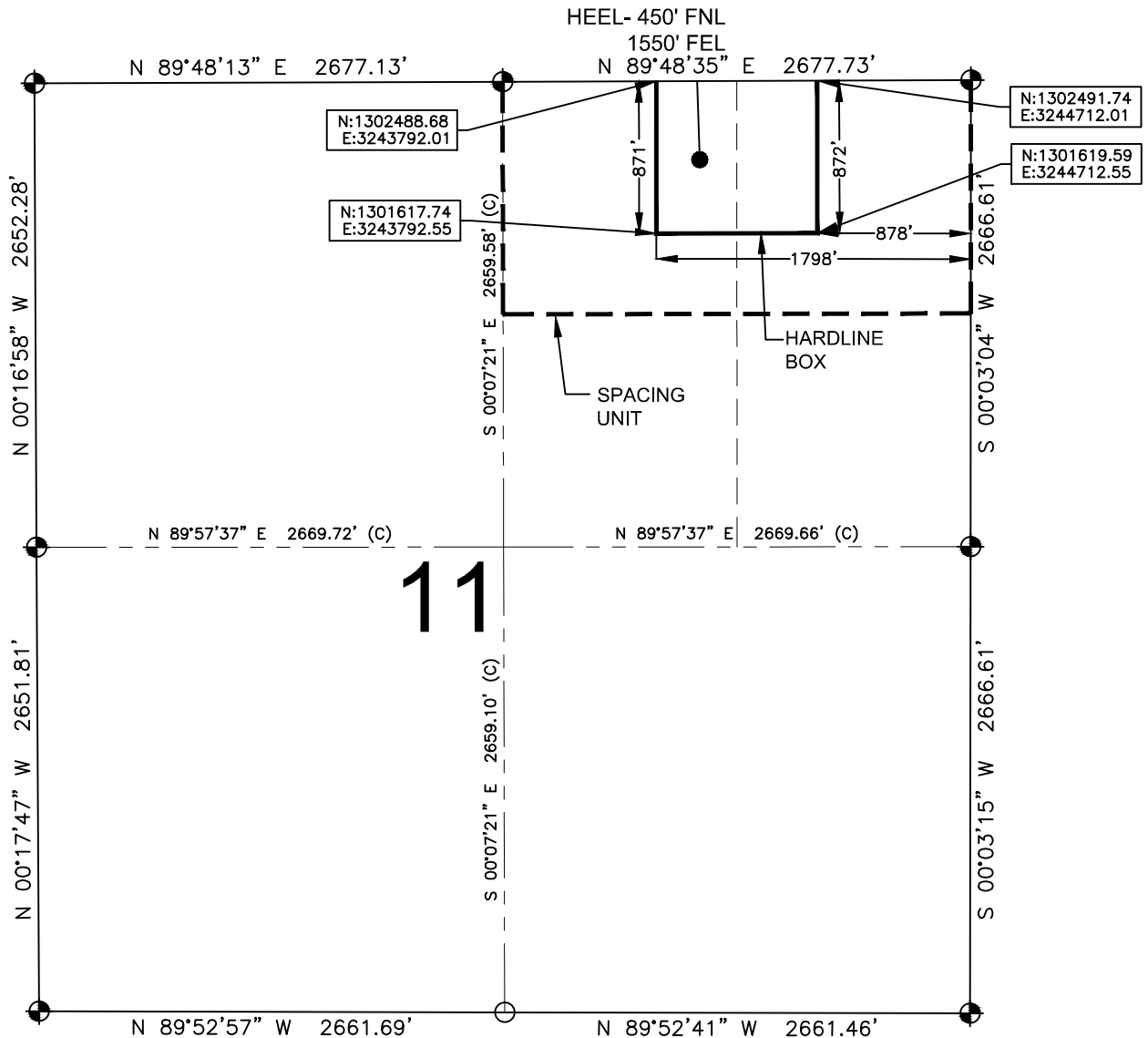
SHEET 1 OF 2

DRAWING DATE:	HEEL LOCATION:
07-23-14	NW 1/4 NE 1/4,
BY: SMF	SEC. 11, T2N, R65W, 6TH P.M.
CHECKED: SMD	WELD COUNTY, COLORADO



# HARDLINE EXHIBIT: GREENLEAF 27N-2HZ

SECTION 11, TOWNSHIP 2 NORTH, RANGE 65 WEST, 6TH P.M.



## LEGEND

- = EXISTING MONUMENT
- = PROPOSED HEEL
- = CALCULATED POSITION
- ⊕ = BOTTOM HOLE
- BH = BOTTOM HOLE

## QRT/QRT SECTIONS WITHIN PATH OF THE HARDLINE

NWNE, SEC. 11

NENE, SEC. 11

## NOTES:

1. THIS DOCUMENT IS NOT A LAND SURVEY PLAT OR IMPROVEMENT SURVEY PLAT. THIS DOCUMENT DOES NOT REFLECT A FIELD SURVEY. SECTION BREAKDOWN, MONUMENTATION AND HORIZONTAL POSITIONS SHOWN ARE BASED ON THE HEEL AND BOTTOM HOLE LOCATION PROVIDED BY ANADARKO PETROLEUM CORPORATION