



NABORS

**COMPLETION
& PRODUCTION
SERVICES CO.**

**MICRO
LOG**

Company		MULL DRILLING COMPANY, INC.	
Well		SCHERLER #1-10	
Field			
County		KIOWA	
State		COLORADO	
Location:		AP1 # : 05-061-06893-00	
Permanent Datum		GROUND LEVEL Elevation 4148	
Log Measured From		KELLY BUSHING 11' A.G.L.	
Drilling Measured From		KELLY BUSHING	
SEC 10 TWP 17S RGE 45W		CDL/CNL/PE DIL/SON	
Elevation		K.B. 4159 D.F. 4157 G.L. 4148	
Date	8/28/14		
Run Number	TWO		
Depth Driller	5450		
Depth Logger	5457		
Bottom Logged Interval	5439		
Top Log Interval	3600		
Casing Driller	341		
Casing Logger	340		
Bit Size	7.875		
Type Fluid in Hole	CHEMICAL MUD	CHLORIDES 1800 PPM	
Density / Viscosity	9.360		
pH / Fluid Loss	9.5/7.2		
Source of Sample	FLOWLINE		
Rm @ Meas. Temp	1.10 @ 87F		
Rmt @ Meas. Temp	.82 @ 87F		
Rmc @ Meas. Temp	1.32 @ 87F		
Source of Rmt / Rmc	MEASURED		
Rm @ BHT	.74 @ 129F		
Time Circulation Stopped	2 HOURS		
Time Logger on Bottom			
Maximum Recorded Temperature	129F		
Equipment Number	4010		
Location	HAYS, KS.		
Recorded By	JASON CAPPELLUCCI		
Witnessed By	PHIL ASKEY		

<<< Fold Here >>>

All interpretations are opinions based on inferences from electrical or other measurements and we cannot and do not guarantee the accuracy or correctness of any interpretation, and we shall not, except in the case of gross or willful negligence on our part, be liable or responsible for any loss, costs, damages, or expenses incurred or sustained by anyone resulting from any interpretation made by any of our officers, agents or employees. These interpretations are also subject to our general terms and conditions set out in our current Price Schedule.

Comments

NABORS COMPLETION & PRODUCTION SERVICES
785-628-6395
THANK YOU FOR YOUR BUSINESS
BRANDON, CO. - 10 NORTH - WEST INTO



NABORS
**COMPLETION
& PRODUCTION**

MAIN SECTION

Database File:

25860pe.db

Dataset Pathname:

pass6.1

Presentation Format:

_micro

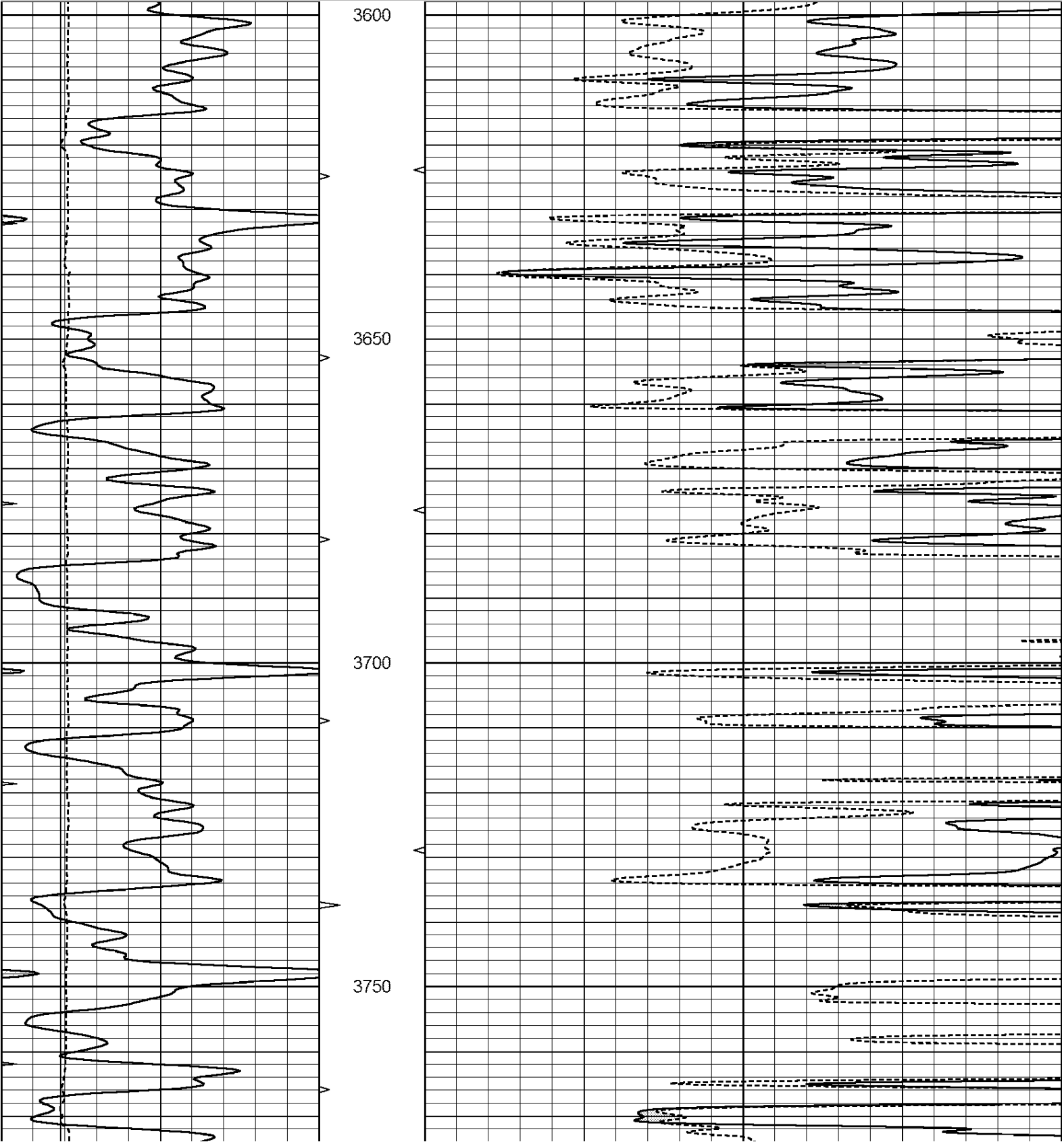
Dataset Creation:

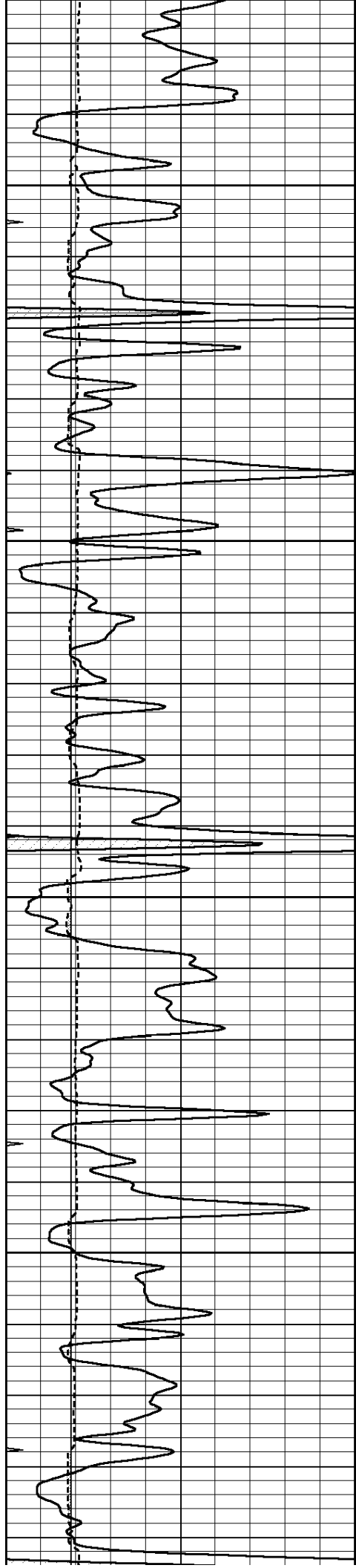
Thu Aug 28 07:56:44 2014

Charted by:

Depth in Feet scaled 1:240

0	GAMMA RAY (GAPI)	150	ABHV	0	MEL1.5 (Ohm-m)	20
6	CALIPER (in)	16	10 (ft3)	0 0	MEL2.0 (Ohm-m)	20
0	MINMK	20	TBHV			
			0 (ft3)	10		



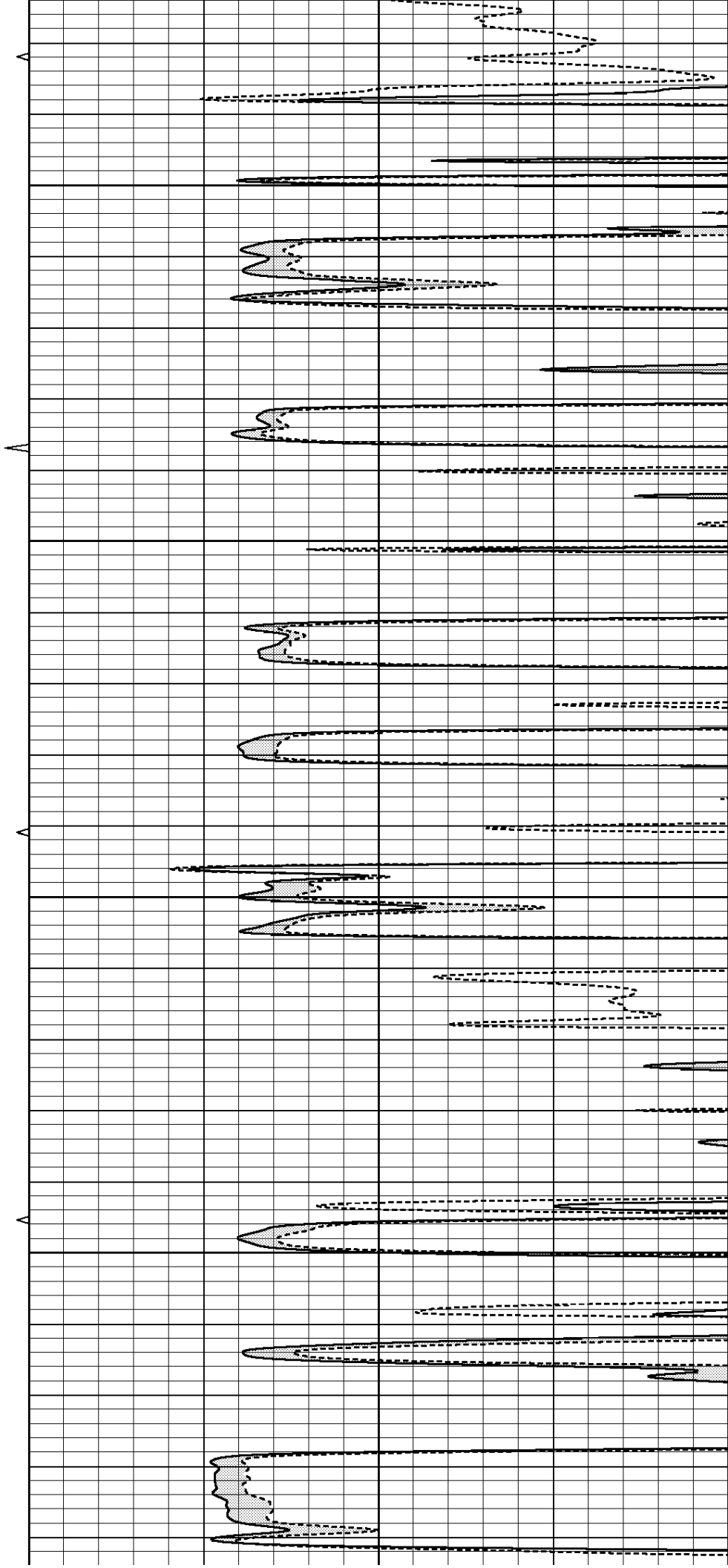


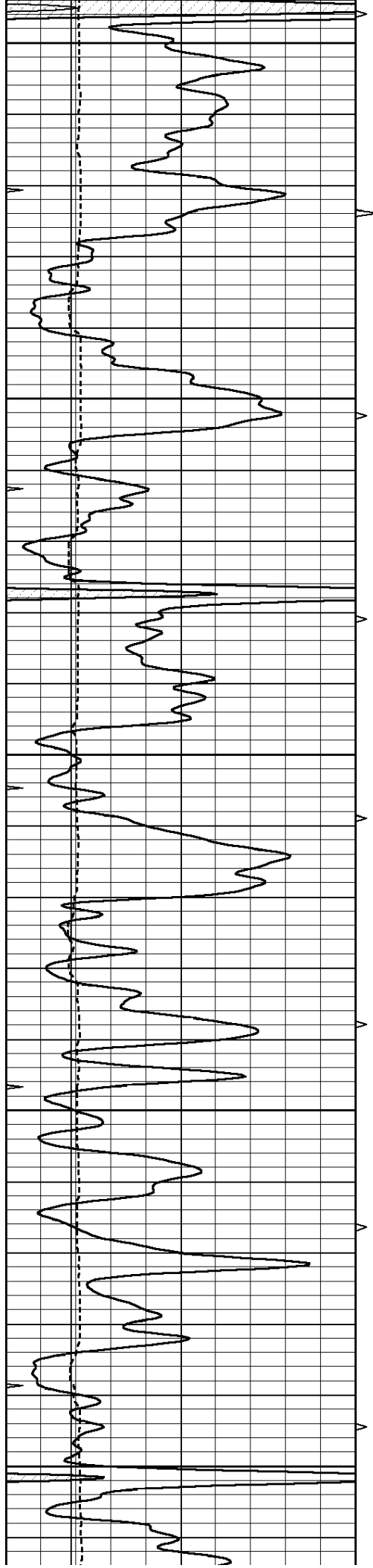
3800

3850

3900

3950





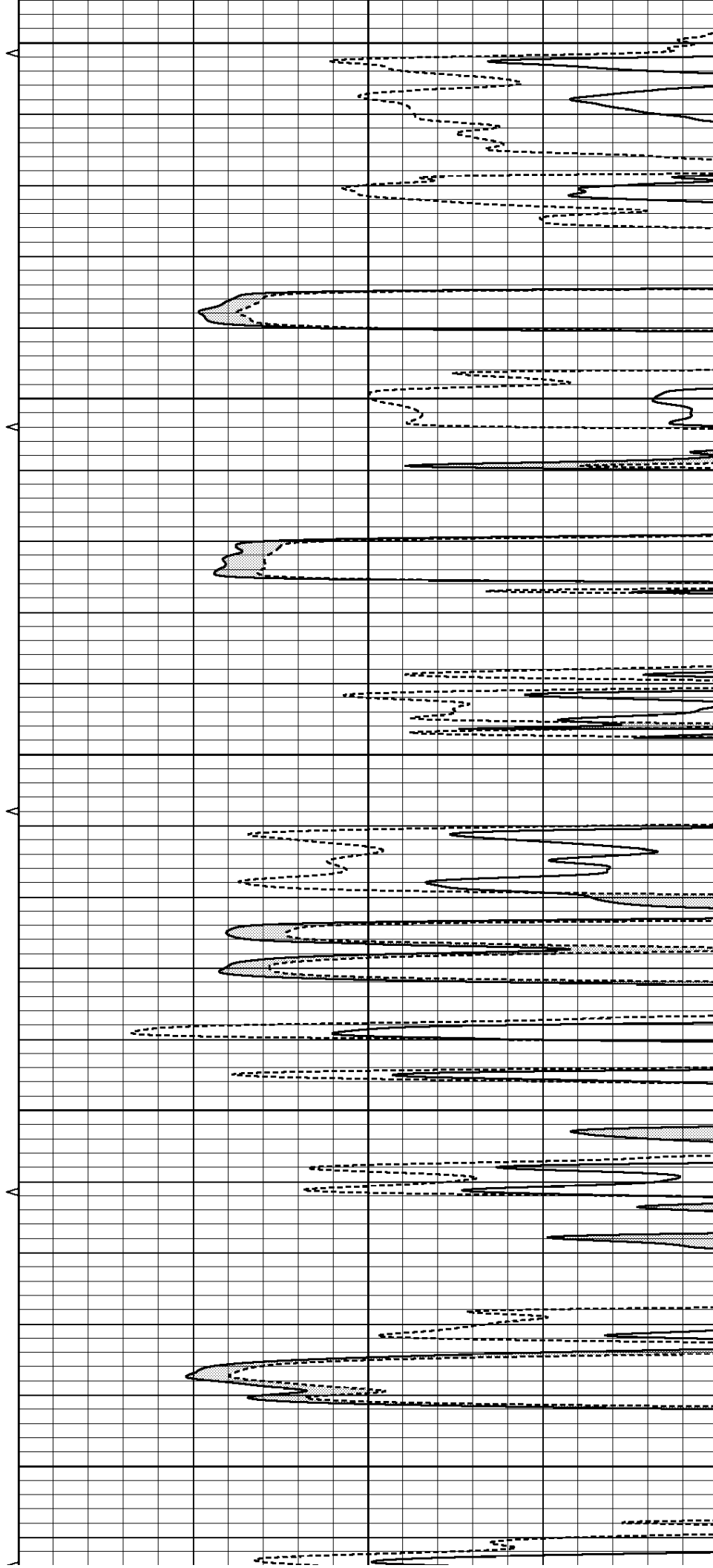
4000

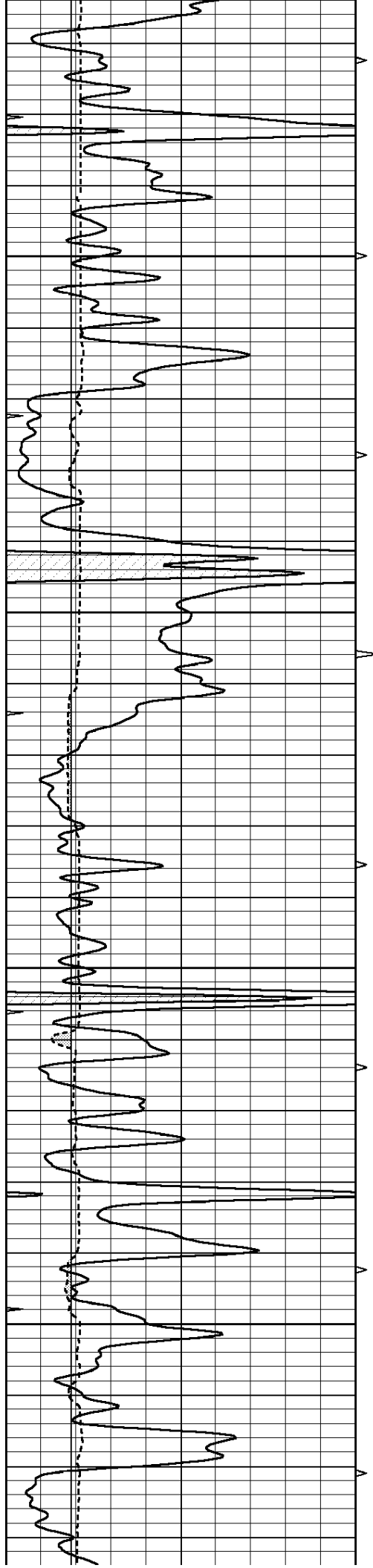
4050

4100

4150

4200



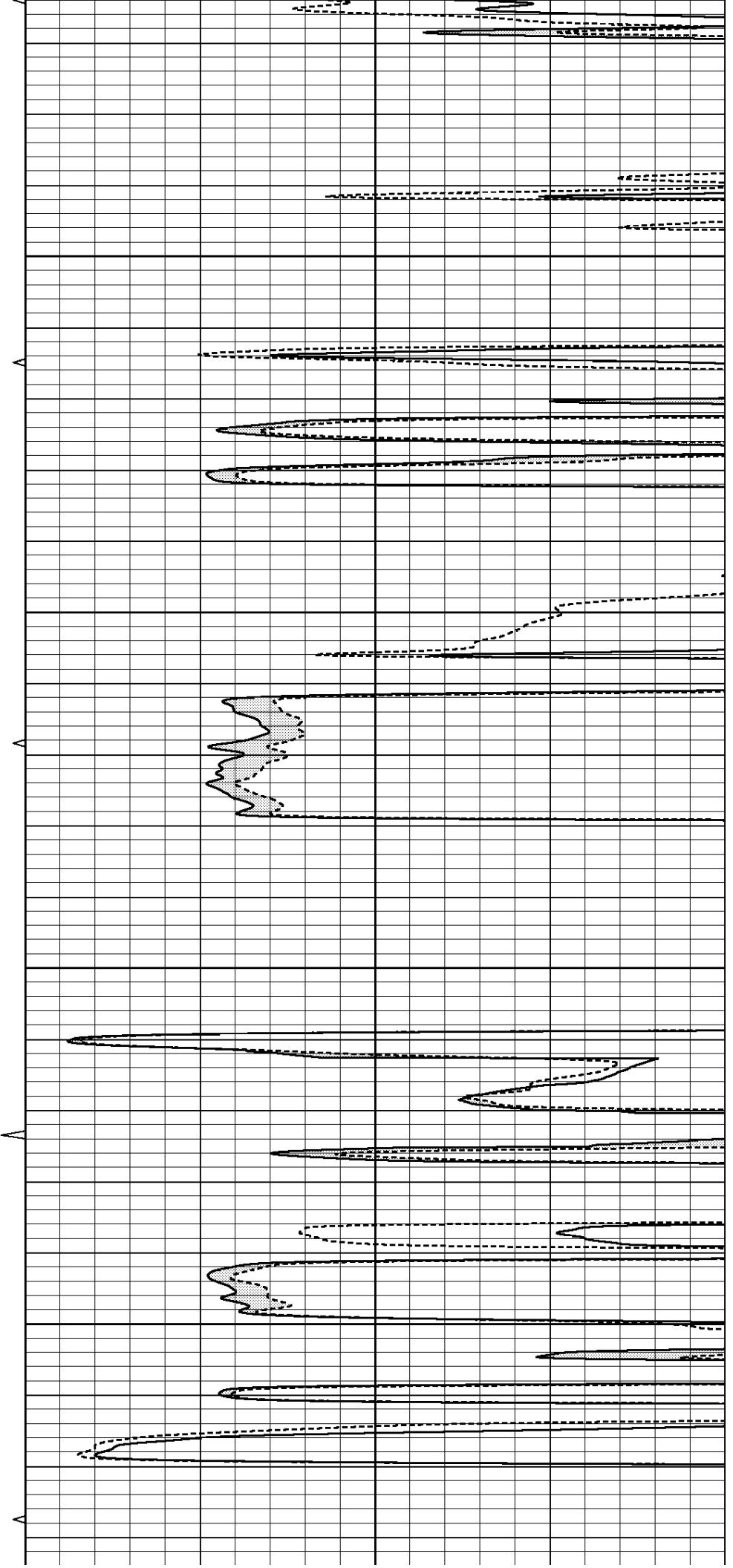


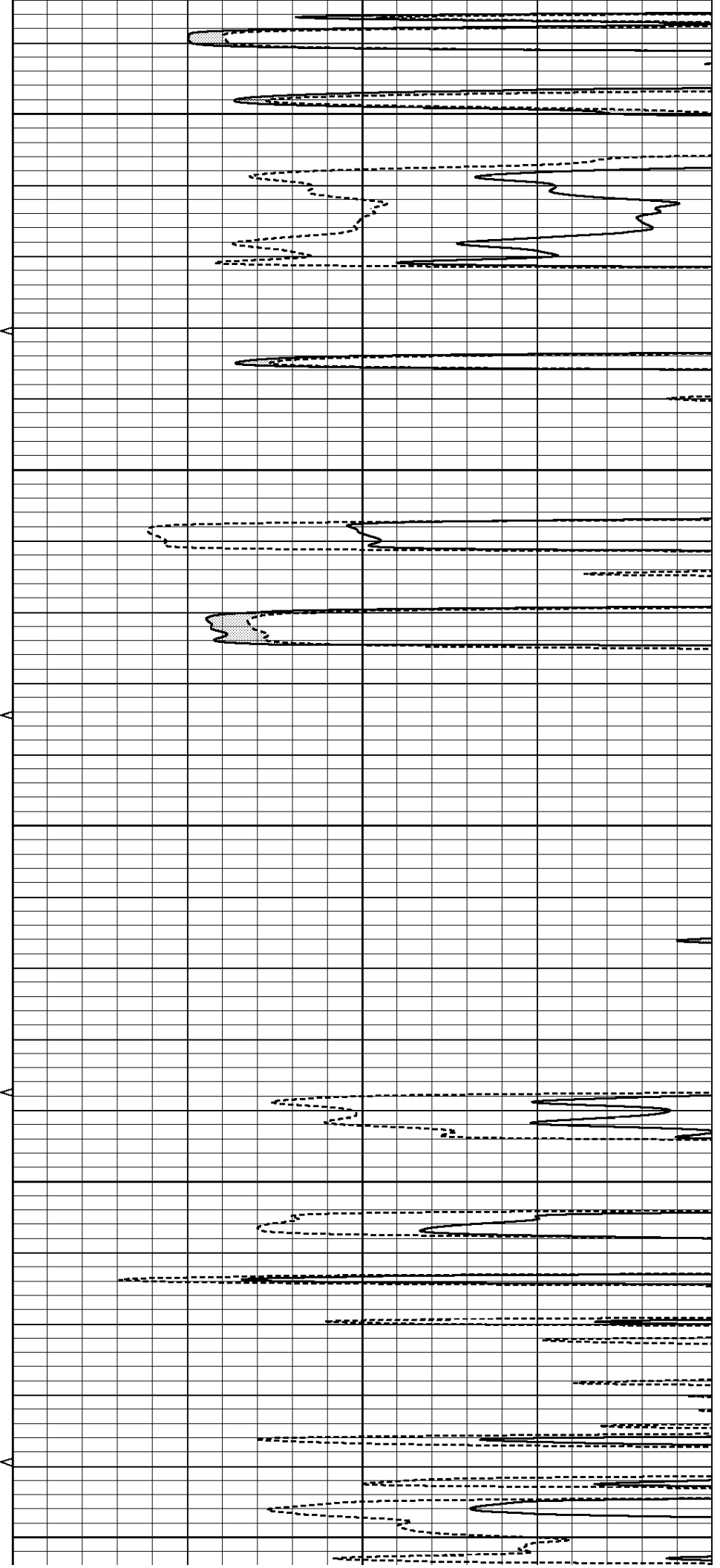
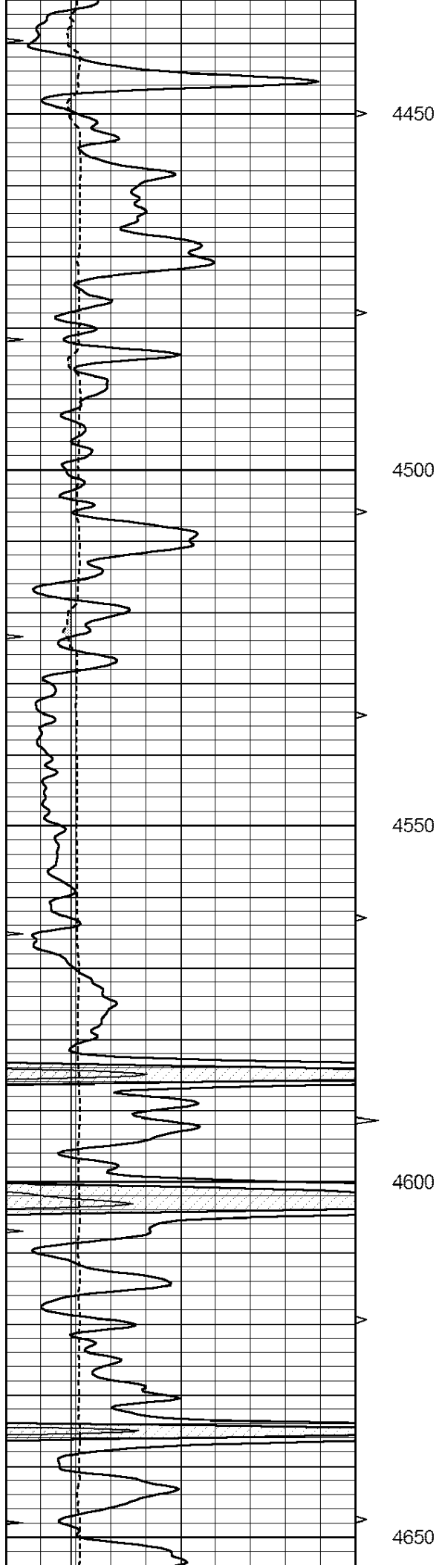
4250

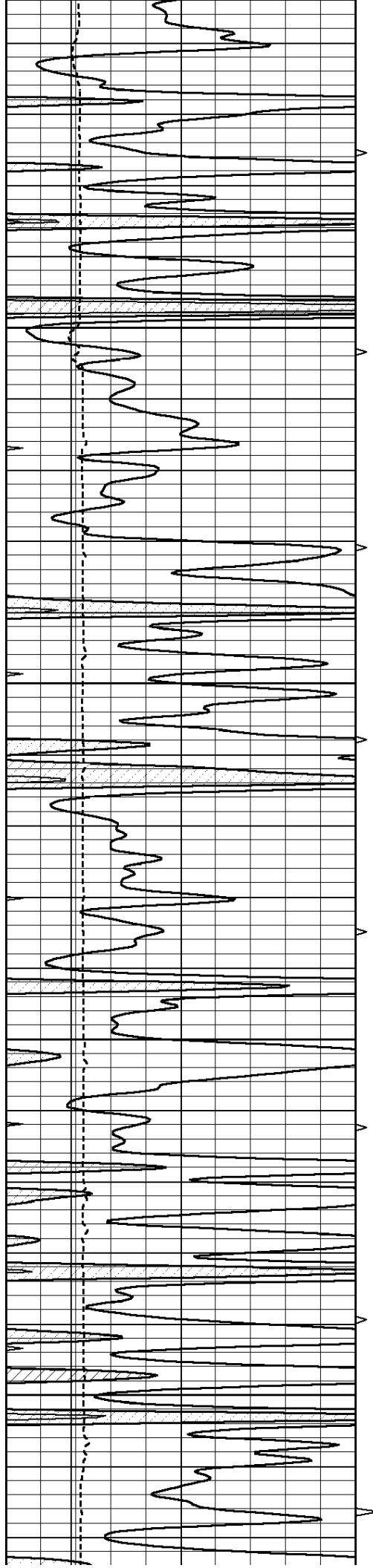
4300

4350

4400





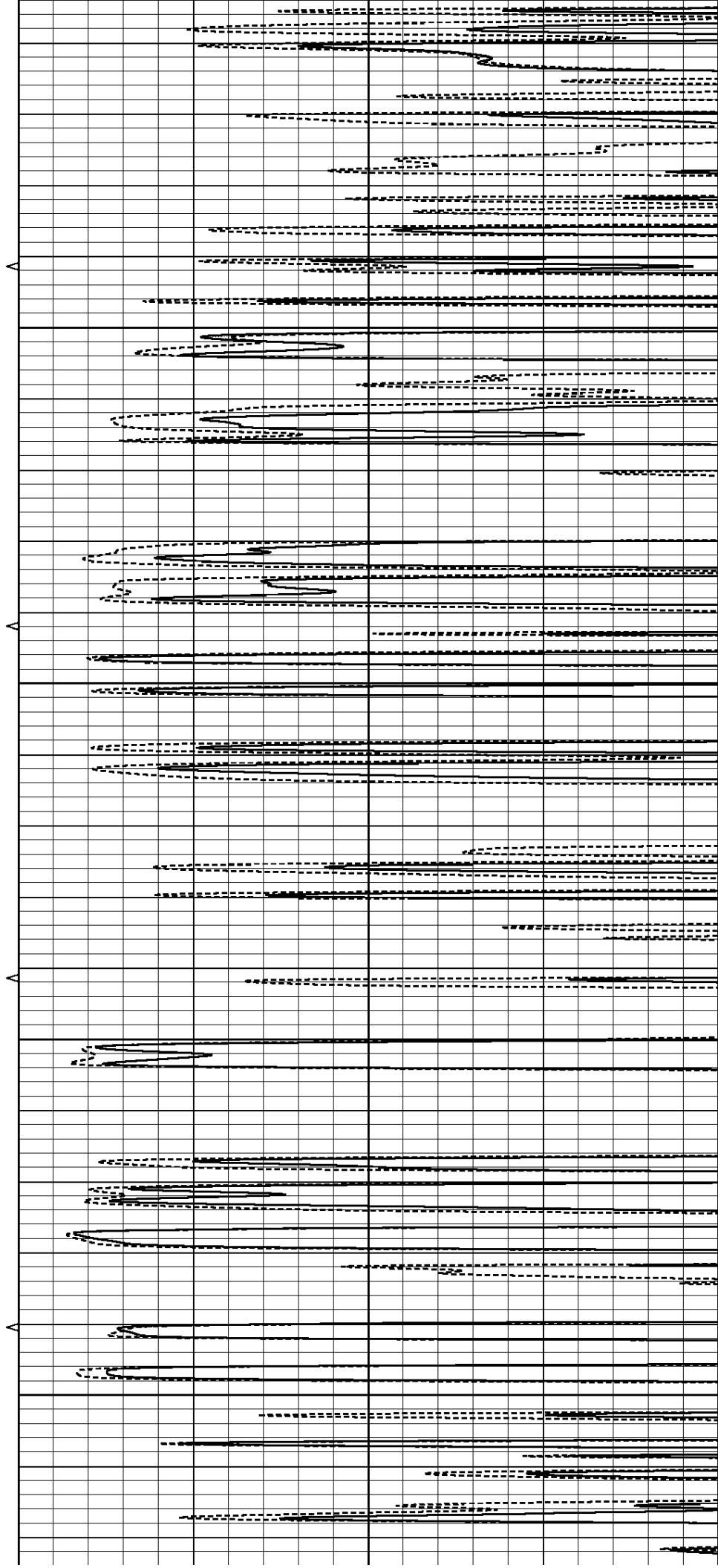


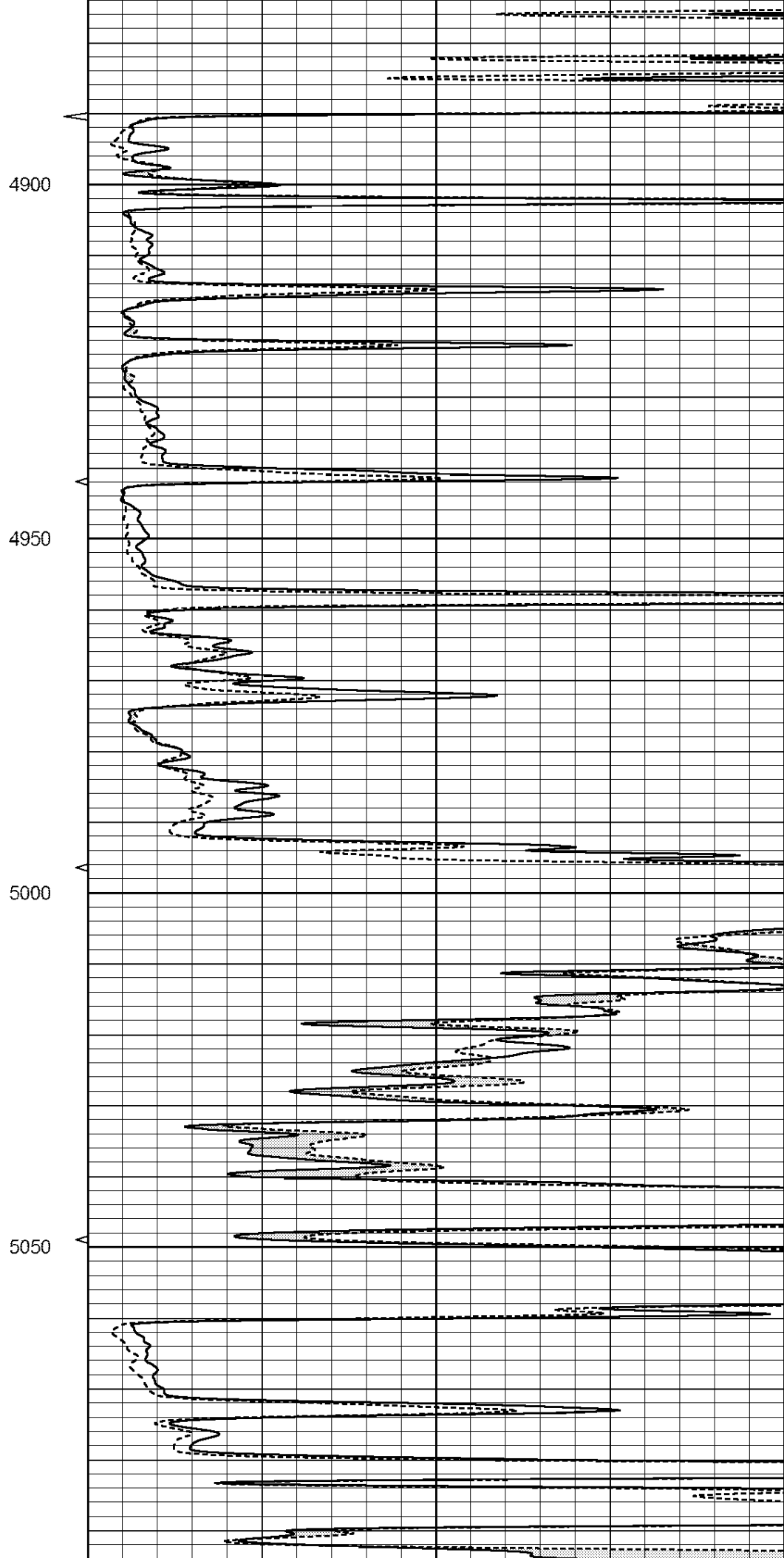
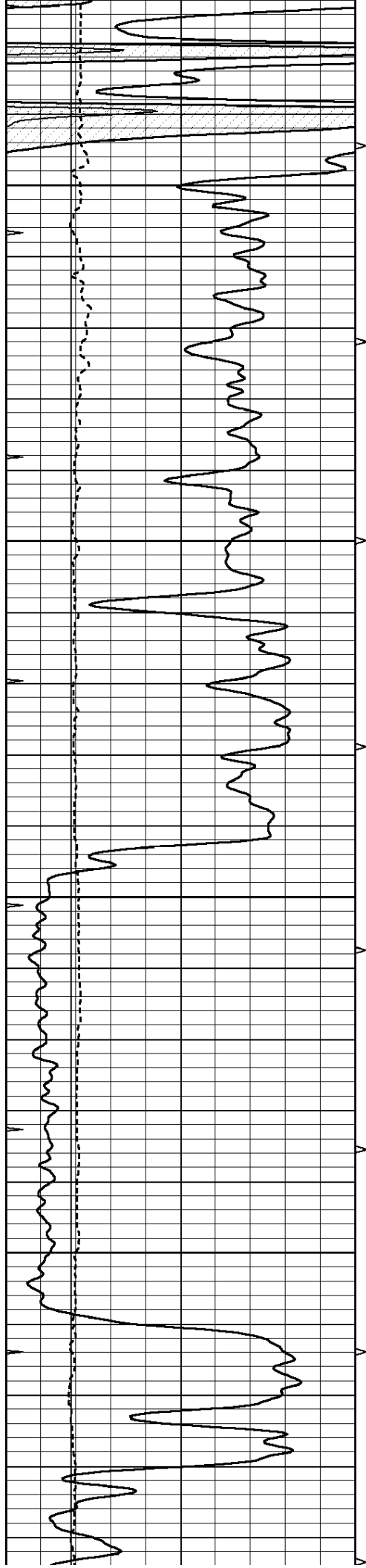
4700

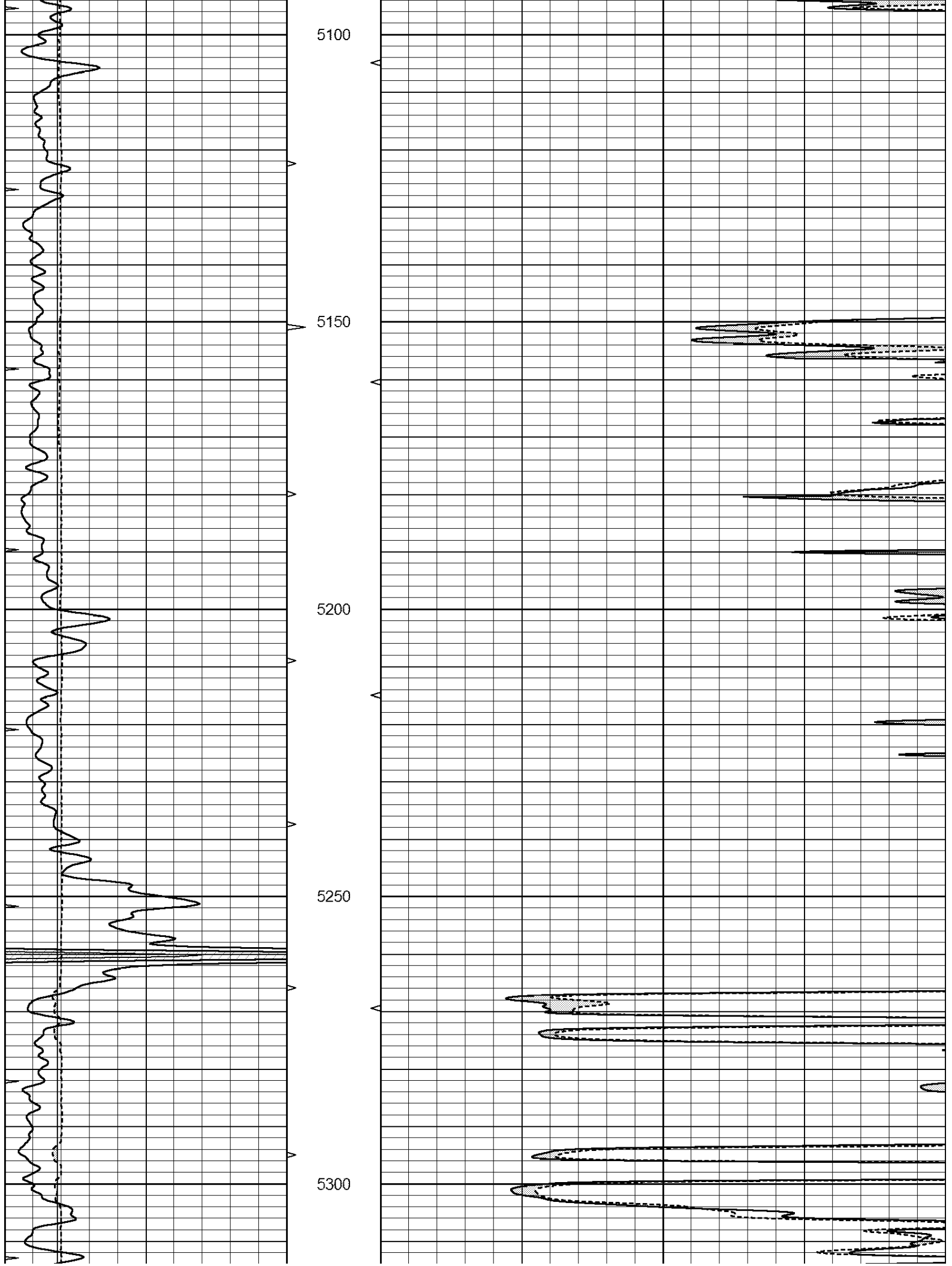
4750

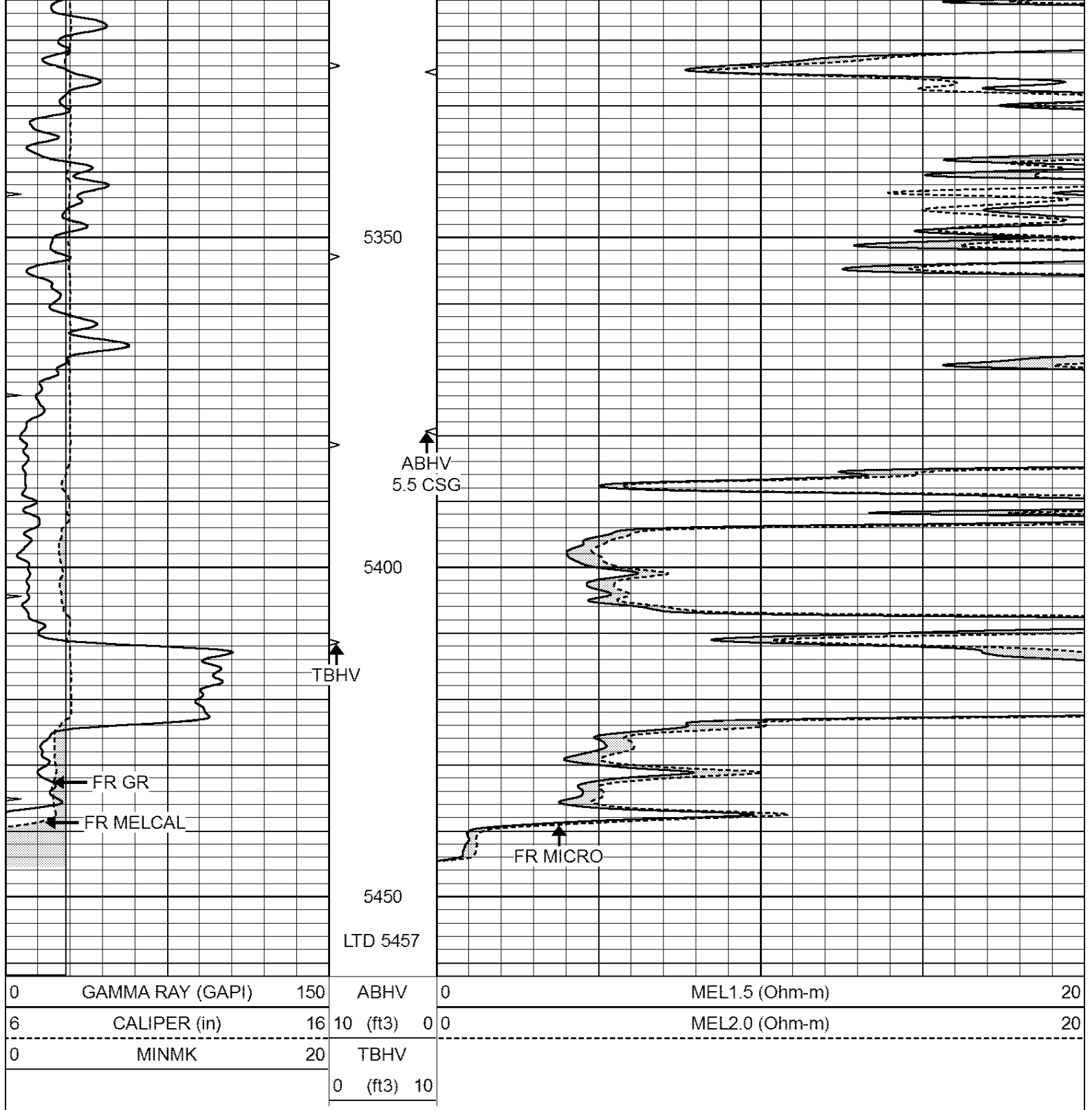
4800

4850





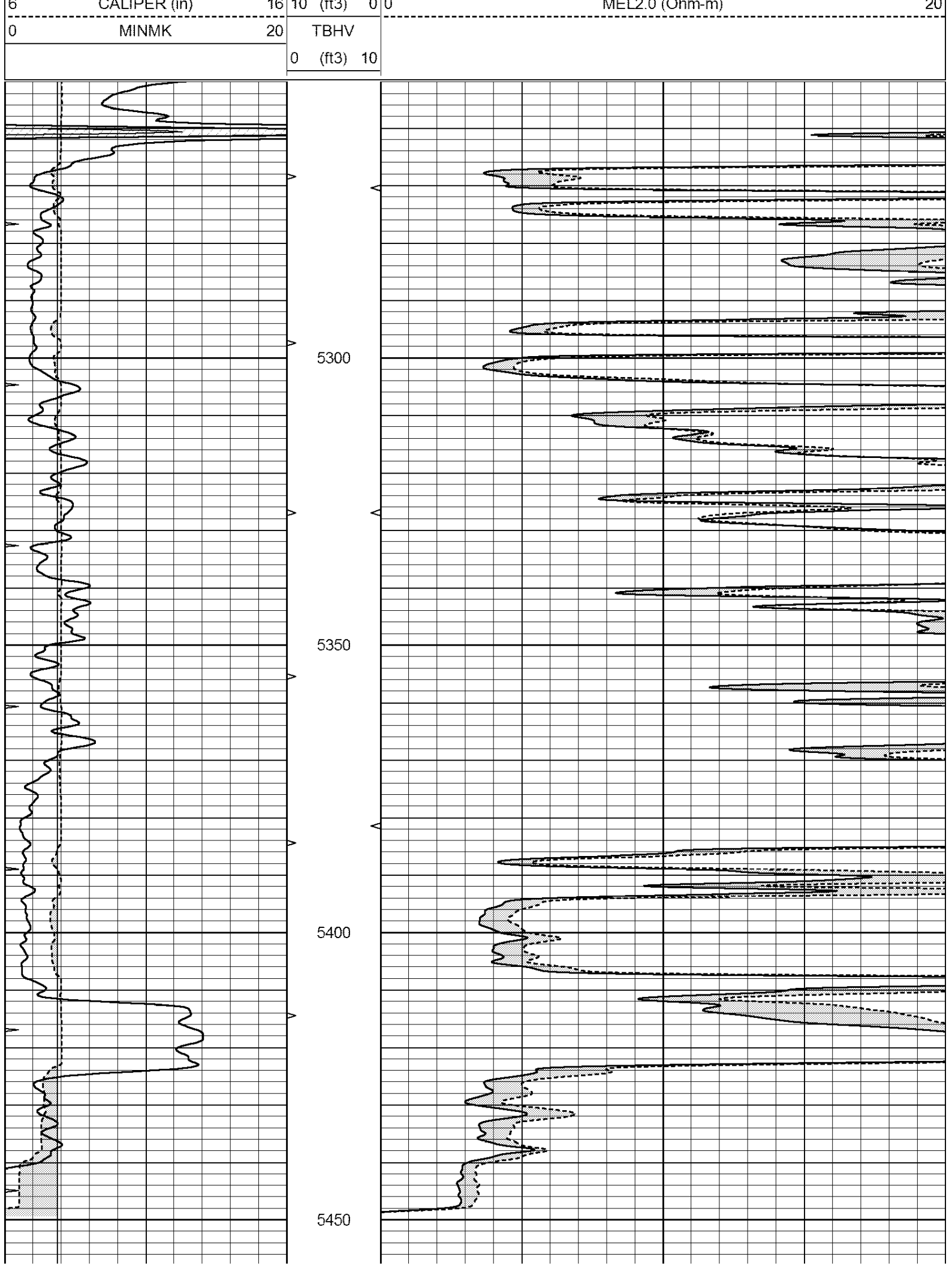




REPEAT SECTION

Database File: 25860pe.db
 Dataset Pathname: pass5.1
 Presentation Format: _micro
 Dataset Creation: Thu Aug 28 07:30:36 2014 by Calc Open-Cased 090629
 Charted by: Depth in Feet scaled 1:240

0	GAMMA RAY (GAPI)	150	ABHV	0	MEL1.5 (Ohm-m)	20
6	CALIPER (in)	16	10 (ft3)	0	MEL2.0 (Ohm-m)	20
0	MINMK	20	TBHV			
			0 (ft3)	10		



[illegible]