



Corporate Office

1775 Sherman Street, #3000
Denver, Colorado 80203
303.860.5800
www.pdce.com

July 18, 2014

State of Colorado, Oil & Gas Conservation Commission
Attn: Matt Lepore
1120 Lincoln Street, Suite 801
Denver, CO 80203

Re: **Letter to the Director, Rule 318A.e.**
Kindsfater 24J-303
NENW, Section 24 T6N R66W
Weld County, Colorado

Dear Director:

PDC Energy ("PDC") hereby certifies to the Director that PDC holds all minerals in the proposed 320 acre wellbore spacing unit consisting of the W2 of Section 24 therefore, no 30-day notice is needed to owners in the proposed wellbore spacing unit. This horizontal well location crosses existing unit boundaries and requires the formation of the proposed unit. PDC hereby requests the Director to approve the well.

If you should have any questions or concerns regarding this permit, please contact the undersigned at (303) 318-6131.

Sincerely,

A handwritten signature in blue ink that reads "Shaye Marshall".

Shaye Marshall
Regulatory Analyst
PDC Energy, Inc.

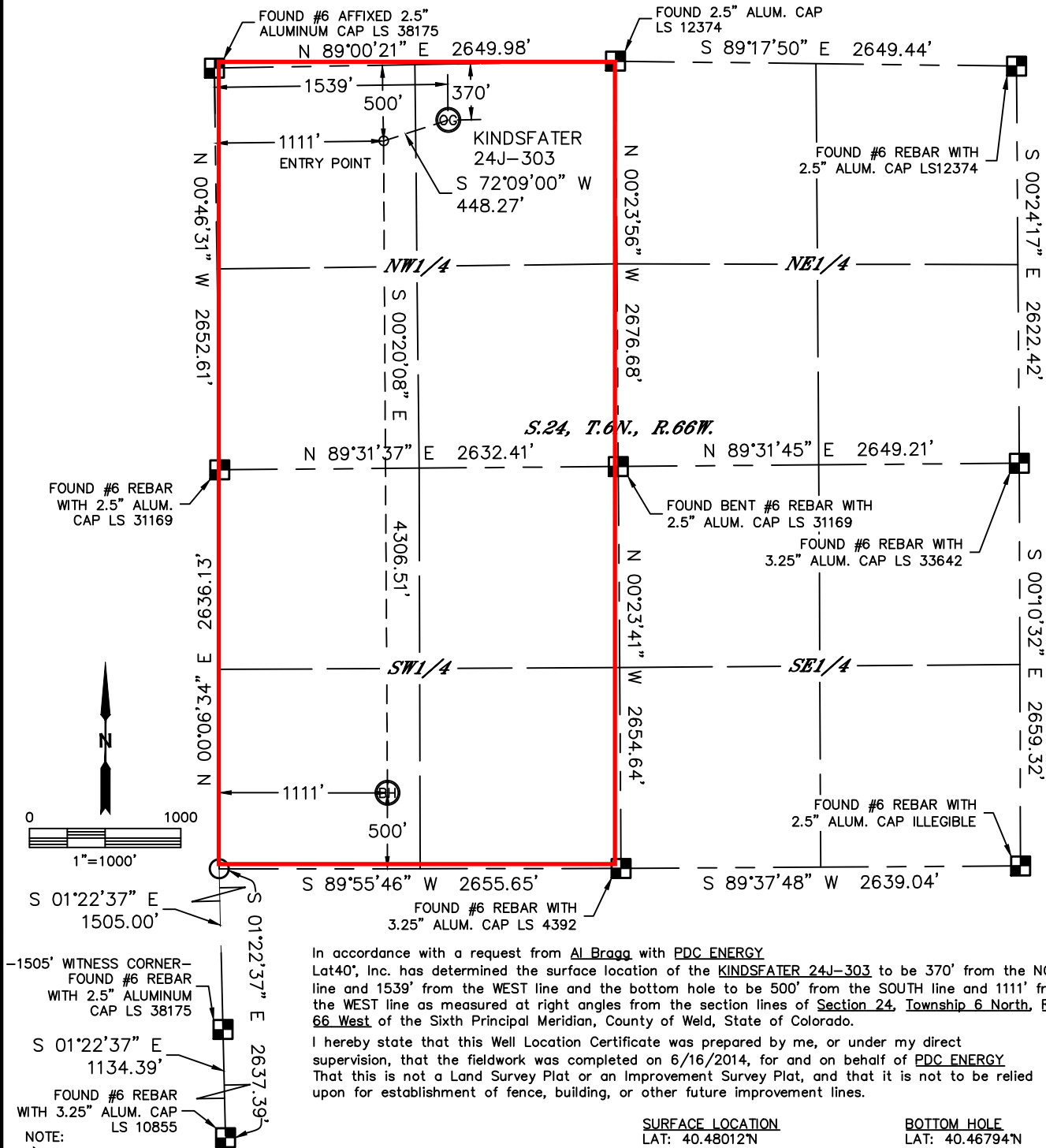


Lat40°, Inc. 1635 Foxtrail Drive, Suite 325 Loveland, CO 970-776-3321

WELL LOCATION CERTIFICATE

THIS MAP DOES NOT REPRESENT A BOUNDARY SURVEY

SECTION: 24
TOWNSHIP: 6N
RANGE: 66W



In accordance with a request from Al Bragg with PDC ENERGY Lat40°, Inc. has determined the surface location of the KINDSFATER 24J-303 to be 370' from the NORTH line and 1539' from the WEST line and the bottom hole to be 500' from the SOUTH line and 1111' from the WEST line as measured at right angles from the section lines of Section 24, Township 6 North, Range 66 West of the Sixth Principal Meridian, County of Weld, State of Colorado.

I hereby state that this Well Location Certificate was prepared by me, or under my direct supervision, that the fieldwork was completed on 6/16/2014, for and on behalf of PDC ENERGY. That this is not a Land Survey Plat or an Improvement Survey Plat, and that it is not to be relied upon for establishment of fence, building, or other future improvement lines.

SURFACE LOCATION
LAT: 40.48012°N
LONG: 104.72938°W
PDOP: 2.0
ELEV: 4764'
1/4,1/4: NE1/4NW1/4

BOTTOM HOLE
LAT: 40.46794°N
LONG: 104.73096°W
1/4,1/4: SW1/4SW1/4

ENTRY POINT
LAT: 40.47975°N
LONG: 104.73092°W
1/4,1/4: NW1/4NW1/4

LEGEND

- = ALIQUOT MONUMENT AS DESCRIBED
- = CALCULATED POSITION

Brian T. Brinkman—On Behalf of Lat40°, Inc.
Colorado Licensed Professional Land Surveyor No. 38175
DATE: 6/30/2014
PROJECT#: 2014003

