

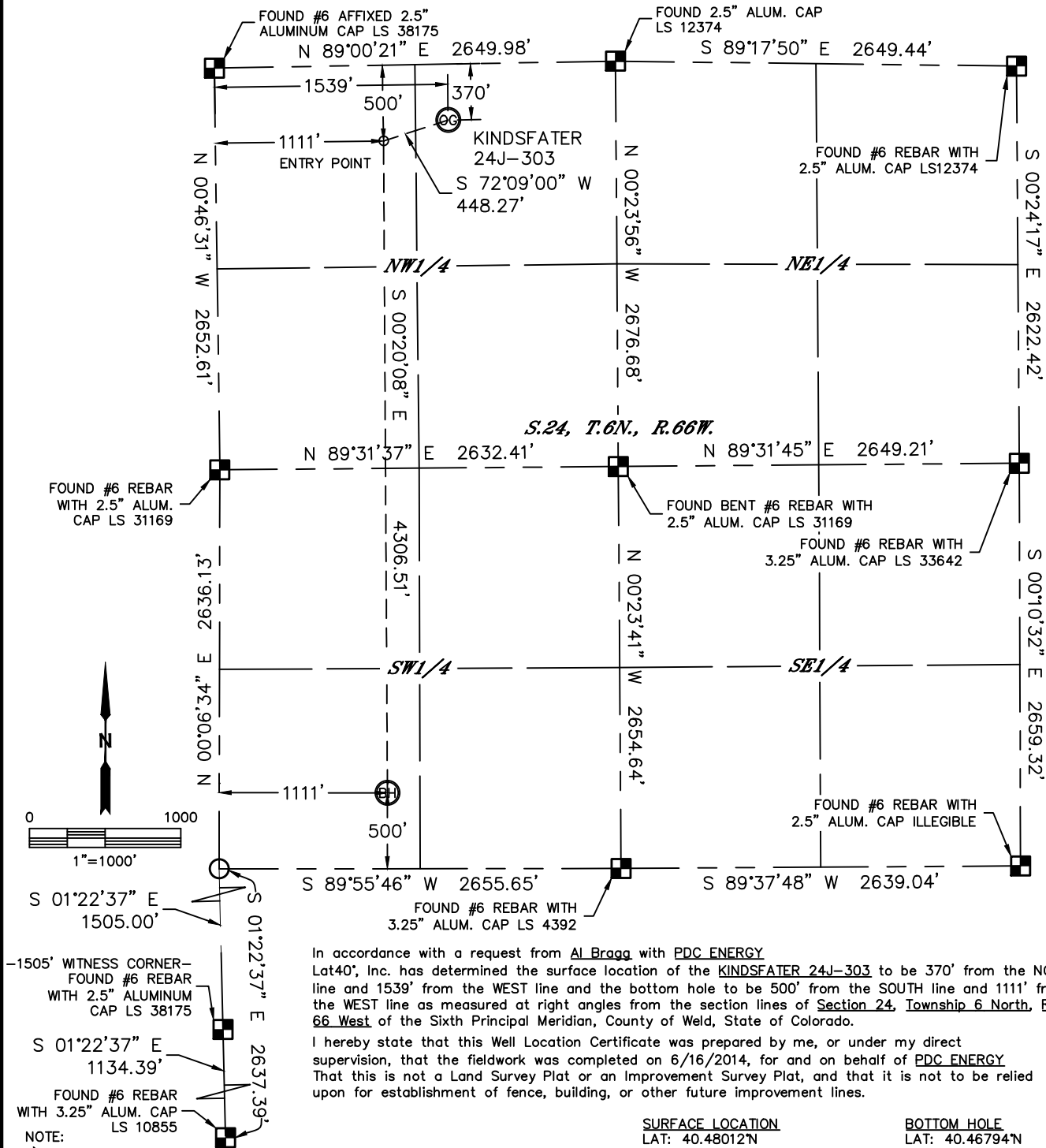


Lat40°, Inc. 1635 Foxtrail Drive, Suite 325 Loveland, CO 970-776-3321

# WELL LOCATION CERTIFICATE

THIS MAP DOES NOT REPRESENT A BOUNDARY SURVEY

SECTION: 24  
TOWNSHIP: 6N  
RANGE: 66W



In accordance with a request from Al Bragg with PDC ENERGY Lat40°, Inc. has determined the surface location of the KINDSFATER 24J-303 to be 370' from the NORTH line and 1539' from the WEST line and the bottom hole to be 500' from the SOUTH line and 1111' from the WEST line as measured at right angles from the section lines of Section 24, Township 6 North, Range 66 West of the Sixth Principal Meridian, County of Weld, State of Colorado.

I hereby state that this Well Location Certificate was prepared by me, or under my direct supervision, that the fieldwork was completed on 6/16/2014, for and on behalf of PDC ENERGY. That this is not a Land Survey Plat or an Improvement Survey Plat, and that it is not to be relied upon for establishment of fence, building, or other future improvement lines.

#### SURFACE LOCATION

LAT: 40.48012°N  
LONG: 104.72938°W  
PDOP: 2.0  
ELEV: 4764'  
1/4,1/4: NE1/4NW1/4

#### BOTTOM HOLE

LAT: 40.46794°N  
LONG: 104.73096°W  
1/4,1/4: SW1/4SW1/4

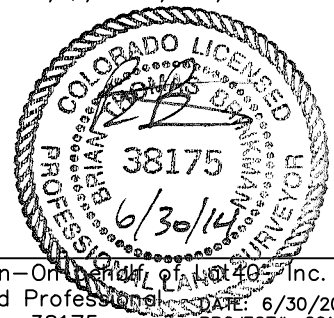
#### ENTRY POINT

LAT: 40.47975°N  
LONG: 104.73092°W  
1/4,1/4: NW1/4NW1/4

#### LEGEND

- = ALIQUOT MONUMENT AS DESCRIBED
- = CALCULATED POSITION

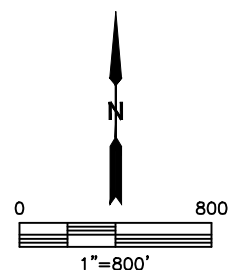
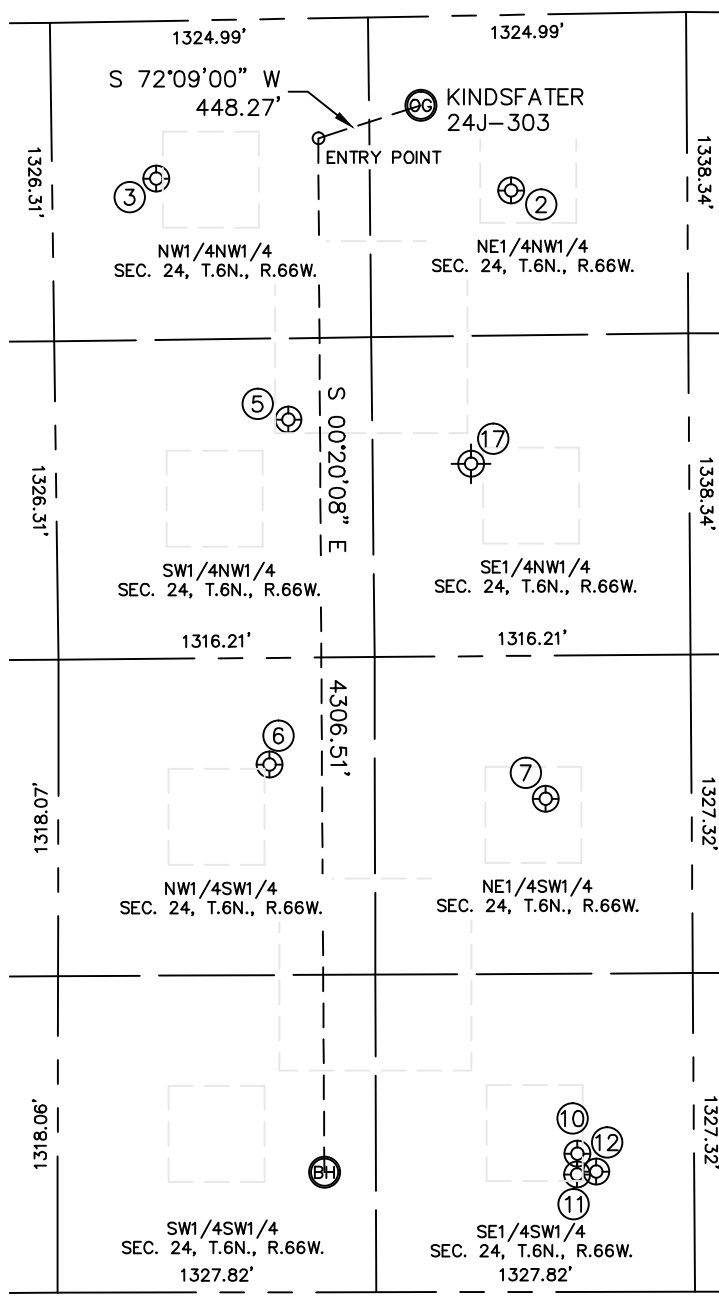
Brian T. Brinkman—On Behalf of Lat40°, Inc.  
Colorado Licensed Professional Land Surveyor No. 38175  
DATE: 6/30/2014  
PROJECT#: 2014003



# SITE SKETCH

KINDSFATER 24J-303

SECTION: 24  
TOWNSHIP: 6N  
RANGE: 66W



WELL NO.	WELL NAME	SHL FOOTAGE				SHL LAT°	SHL LONG°	PDOP	ELEV (FT.)	1/4/1/4
2	NELSON 24-1	732	FNL	1910	FWL	40.47914	-104.72804	2.2	4759	NENW
3	KENT 24-2	656	FNL	434	FWL	40.47931	-104.73335	2.5	4761	NWNW
5	KENT 1	1670	FNL	970	FWL	40.47654	-104.73141	2.1	4745	SWNW
6	SEELEY LAKE 2	2198	FSL	879	FWL	40.47260	-104.73173	2.8	4727	NWSW
7	SEELEY LAKE 3	2053	FSL	2030	FWL	40.47218	-104.72760	2.4	4733	NESW
10	SEELEY LAKE 4	576	FSL	2164	FWL	40.46812	-104.72718	2.4	4717	SESW
11	SEELEY LAKE 5	488	FSL	2163	FWL	40.46788	-104.72718	2.5	4717	SESW
12	SEELEY LAKE 1	501	FSL	2243	FWL	40.46791	-104.72690	2.4	4717	SESW
17	NELSON 24-2	1867	FNL	1729	FWL	40.47600	-104.72870	N/A	4739	SENW

NOTE: THE ABANDONED WELL DATA SHOWN IN RED ABOVE WAS OBTAINED FROM COGCC SCOUT CARDS.

DATE: 6/30/2014  
PROJECT#: 2014003