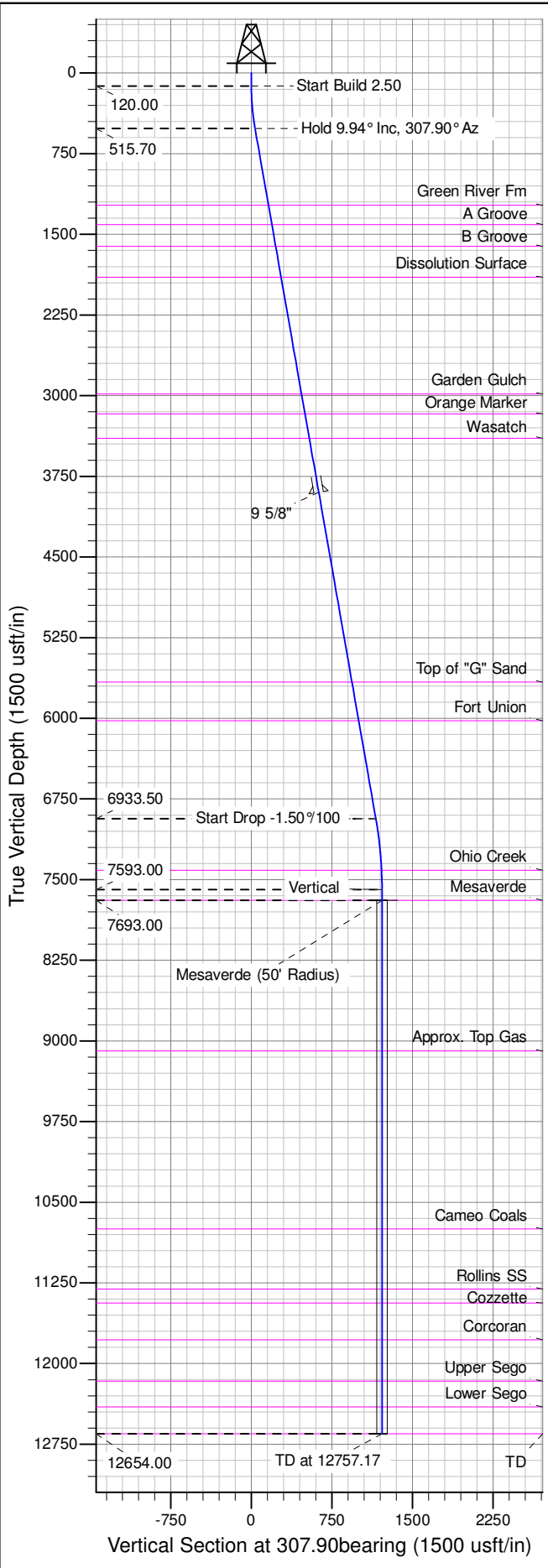
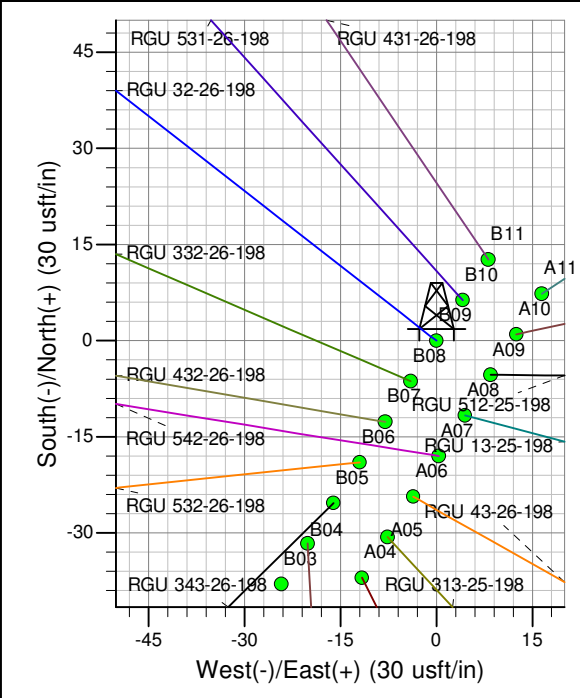
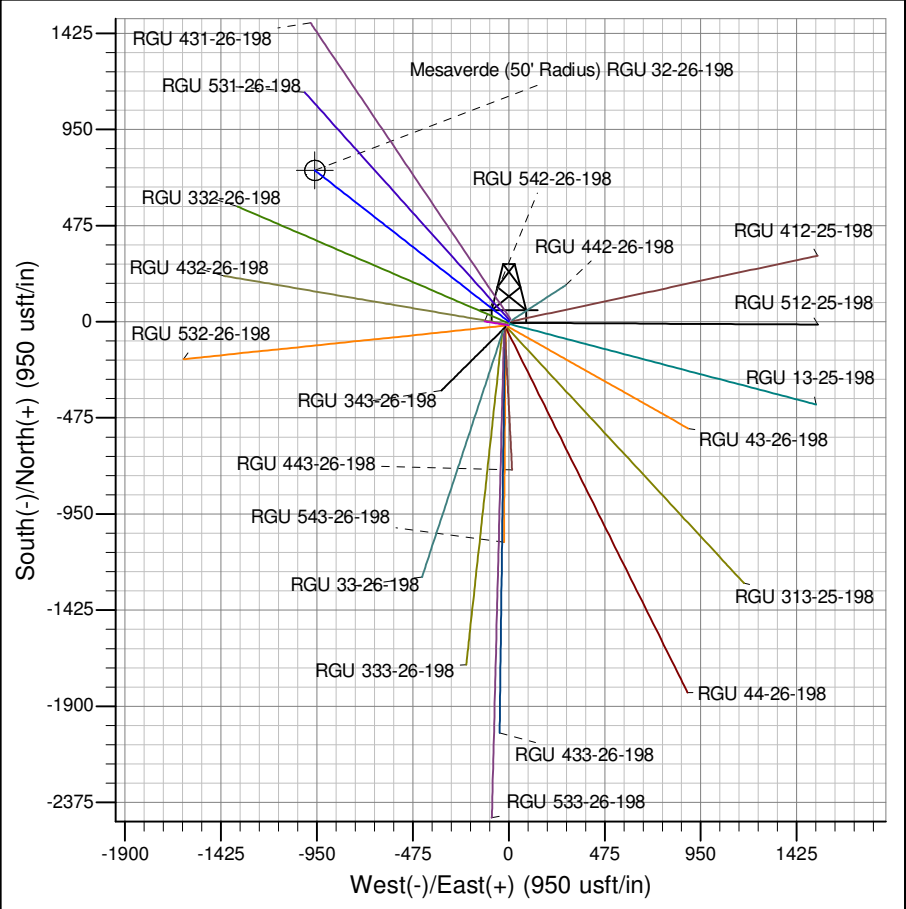




Well Name: RGU 32-26-198  
Surface Location: RGU 42-26-198  
North American Datum 1983 , US State Plane 1983 , Colorado Central Zone  
Ground Elevation: 6622.00  
+N/-S +E/-W Northing Easting Latitude Longitude Slot  
0.00 0.00 1778109.50000 2199607.20000 39.93520 -108.35454 B09  
KELLY BUSHING @ 6643.00usft (Cyclone 29 (21' RKB) kjs)



ANNOTATIONS									
TVD	MD	Inc	Azi	+N/-S	+E/-W	Vsect	Departure	Annotation	
120.00	120.00	0.00	0.00	0.00	0.00	0.00	0.00	Start Build 2.50	
515.70	517.69	9.94	307.90	21.14	-27.16	34.42	34.42	Hold 9.94° Inc, 307.90° Az	
6933.50	7033.35	9.94	307.90	712.27	-914.80	1159.39	1159.39	Start Drop -1.50%/100	
7593.00	7696.17	0.00	0.00	747.51	-960.06	1216.75	1216.75	Vertical	
7693.00	7796.17	0.00	0.00	747.51	-960.06	1216.75	1216.75	Mesaverde	
12654.00	12757.17	0.00	0.00	747.51	-960.06	1216.75	1216.75	TD at 12757.17	



Azimuths to True North  
Magnetic North: 10.36°

Magnetic Field  
Strength: 52273.7snT  
Dip Angle: 65.99°  
Date: 1/24/2013  
Model: IGRF2010

Project: RG 26-01S-098W  
Site: RGU 42-26-198  
Well: RGU 32-26-198  
Design #2 12Aug14 mab