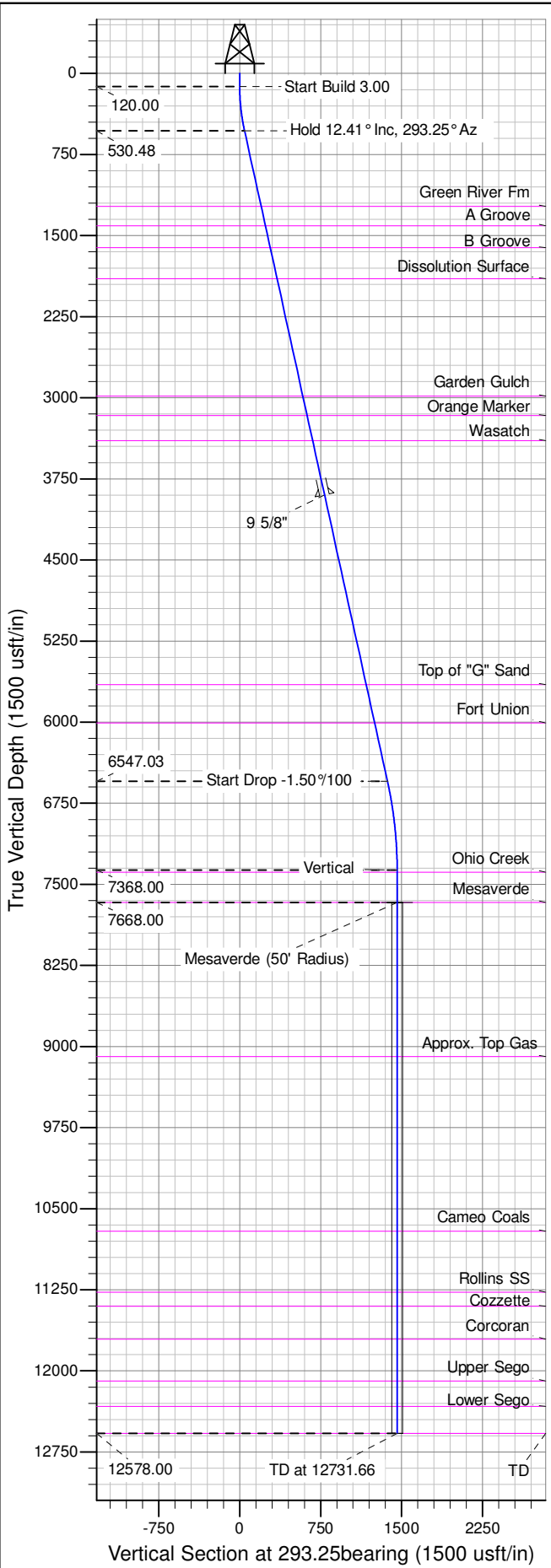
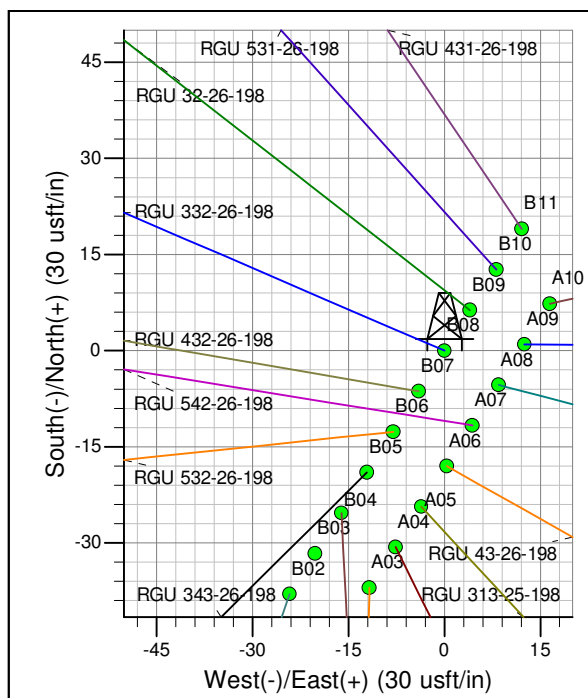
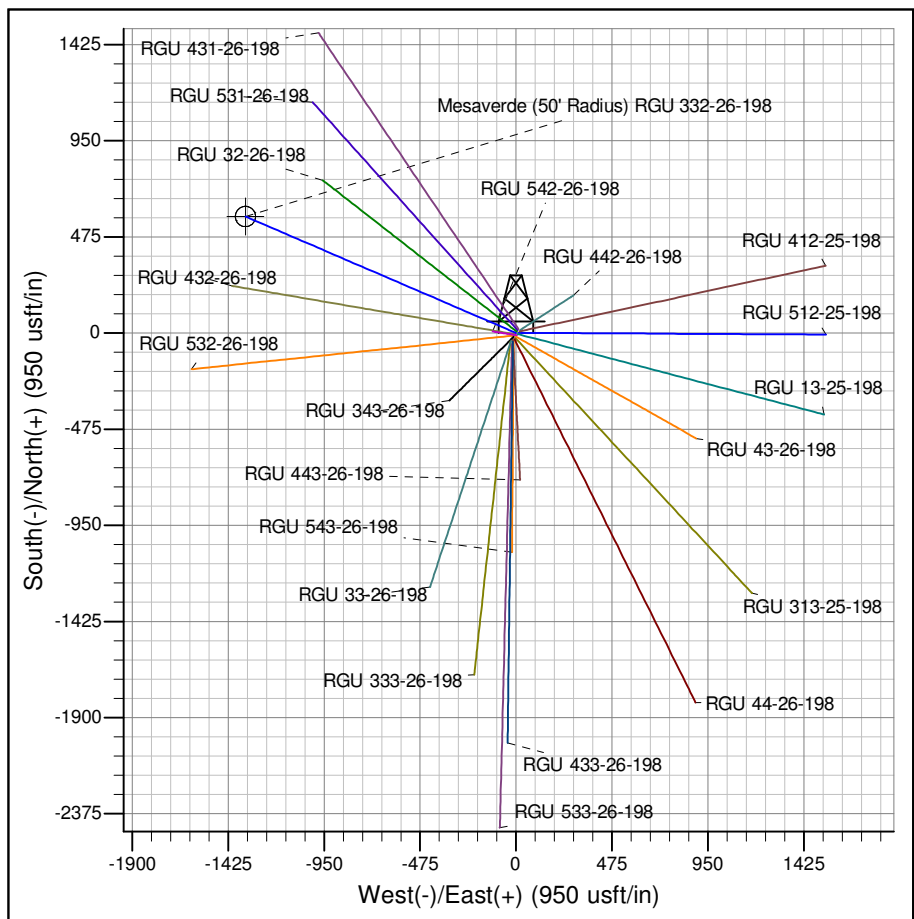




Well Name: RGU 332-26-198
Surface Location: RGU 42-26-198
North American Datum 1983 , US State Plane 1983 , Colorado Central Zone
Ground Elevation: 6622.00
+N/-S +E/-W Northing Easting Latitude Longitude Slot
0.00 0.00 1778103.30000 2199603.00000 39.93519 -108.35455 B08
KELLY BUSHING @ 6643.00usft (Cyclone 29 (21' RKB) kjs)



ANNOTATIONS									
TVD	MD	Inc	Azi	+N/-S	+E/-W	Vsect	Departure	Annotation	
120.00	120.00	0.00	0.00	0.00	0.00	0.00	0.00	Start Build 3.00	
530.48	533.71	12.41	293.25	17.62	-41.01	44.63	44.63	Hold 12.41° Inc, 293.25° Az	
6547.03	6694.23	12.41	293.25	540.36	-1257.53	1368.71	1368.71	Start Drop -1.50°/100	
7368.00	7521.66	0.00	0.00	575.60	-1339.54	1457.98	1457.98	Vertical	
7668.00	7821.66	0.00	0.00	575.60	-1339.54	1457.98	1457.98	Mesaverde	
12578.00	12731.66	0.00	0.00	575.60	-1339.54	1457.98	1457.98	TD at 12731.66	



Azimuths to True North
Magnetic North: 10.36°
Magnetic Field
Strength: 52273.7snT
Dip Angle: 65.99°
Date: 1/24/2013
Model: IGRF2010

Project: RG 26-01S-098W
Site: RGU 42-26-198
Well: RGU 332-26-198
Design #2 12Aug14 mab