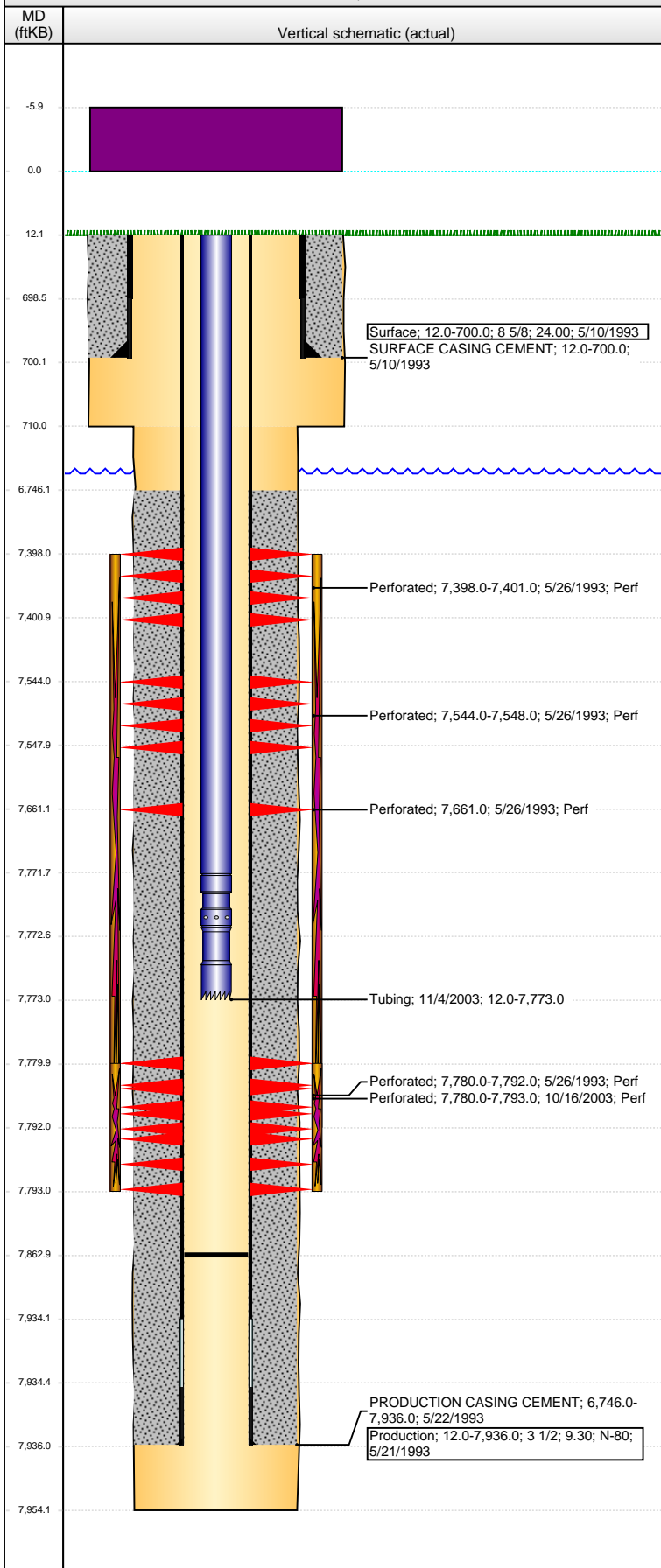


Well Name: VON REYN MC09-05

VERTICAL - ORIGINAL HOLE, 10/2/2014 10:49:38 AM



Well Header

API	Business Unit	District	Well Config
05-013-06304	DJ BASIN	15	VERTICAL
Original KB Elevation (ft)	KB - GL / MSL (ftKB)	Spud Date	P & A Date
5,199.00	12.00	5/9/1993	

Comment
DISCREPANCY: PROD CSG SET DEPTH: DRL RPT 7932', ST RPT & CSG TALLY 7936'. USED 7936'.

Directions To Well

Congressional Location

Quarter 1	Quarter 2	Quarter 3	Quarter 4	Section	Township	Twnshp N...	Range	Rng E/W Dir
		SW	NW	9	1	N	69	W

Bottom Hole Location

North-South Distance (ft)	From N or S Line	East-West Distance (ft)	From E or W Line

Plug Back Total Depths

Date	Depth (ftKB)	Method	Com
5/19/1993	7,932.0	CASING TALLY	FLOAT SHOE W/ BAFFLE
5/25/1993	7,906.0	CASED HOLE LOG	DEPTH LOGGER ON CBL
11/4/2003	7,863.0	TAG	TAG TO LAND TBG

Wellbore Sections

Section Des	Size (in)	Act Top, MD (ftKB)	Act Btm, MD (ftKB)
SURFACE	12 1/4	12.0	710.0
PRODUCTION	7 7/8	710.0	7,954.0

Zone Statuses

Zone Name	Status Date	Status	Job
CODELL	6/17/1993	PR	DRILLING/COMPLETION - ORIGINAL, 5/9/1993 00:00
CODELL	12/12/2003	PR	RE-FRAC, 10/15/2003 00:00
NIOBRARA	6/17/1993	PR	DRILLING/COMPLETION - ORIGINAL, 5/9/1993 00:00

Casing Strings

Surface, 700.0ftKB

Casing Description	Run Date	OD (in)	Wt/Len (l...)	Grade	Top, MD (ft...)	MD (ftKB)
Surface	5/10/1993	8 5/8	24.00		12.0	700.0

Production, 7,936.0ftKB

Casing Description	Run Date	OD (in)	Wt/Len (l...)	Grade	Top, MD (ft...)	MD (ftKB)
Production	5/21/1993	3 1/2	9.30	N-80	12.0	7,936.0

Cement

Description	Top Depth (ftKB)	Bottom Depth (ftKB)
SURFACE CASING CEMENT	12.0	700.0
Description	Top Depth (ftKB)	Bottom Depth (ftKB)
PRODUCTION CASING CEMENT	6,746.0	7,936.0

Tubing Components

Item Des	OD (in)	Wt (lb/ft)	Grade	Jts	Len (ft)	Btm (ftKB)	Btm (TVD) (ftKB)
Tubing	1 1/2	2.76		239	7,759.50	7,771.5	
Seal Nipple	1 1/2				1.00	7,772.5	
Notched collar	1 1/2				0.50	7,773.0	

Perforation Data

Zone	Bnch/St g	Entered Shot Total	Top (ftKB)	Btm (ftKB)	Date
NIOBRARA, ORIGINAL HOLE	A	2	7,398.00	7,401.00	5/26/1993
NIOBRARA, ORIGINAL HOLE	B	3	7,544.00	7,548.00	5/26/1993
NIOBRARA, ORIGINAL HOLE	C	1	7,661.00	7,661.00	5/26/1993
CODELL, ORIGINAL HOLE		52	7,780.00	7,793.00	10/16/2003
CODELL, ORIGINAL HOLE		7	7,780.00	7,792.00	5/26/1993

Stimulations & Treatments

Date	Zone	Primary Job Type
5/28/1993	NIOBRARA-CODELL, ORIGINAL HOLE	DRILLING/COMPLETION - ORIGINAL
Technical Result	Tech Result Details	Tech Result Note

LIMITED ENTRY

Date	Zone	Primary Job Type
10/27/2003	CODELL, ORIGINAL HOLE	RE-FRAC
Technical Result	Tech Result Details	Tech Result Note

Comment

Well Name: VON REYN MC09-05

VERTICAL - ORIGINAL HOLE, 10/2/2014 10:49:40 AM

Other In Hole

Run Date	Des	OD (in)	Top (ftKB)	Btm (ftKB)

Logs

Date	Type	Top, MD (ftKB)	Btm, MD (ftKB)
5/19/1993	COMPENSATED DENSITY	6,900.0	7,920.0
5/19/1993	INDUCTION	6,900.0	7,945.0
5/25/1993	CBL/CCL/GR	6,600.0	7,906.0

