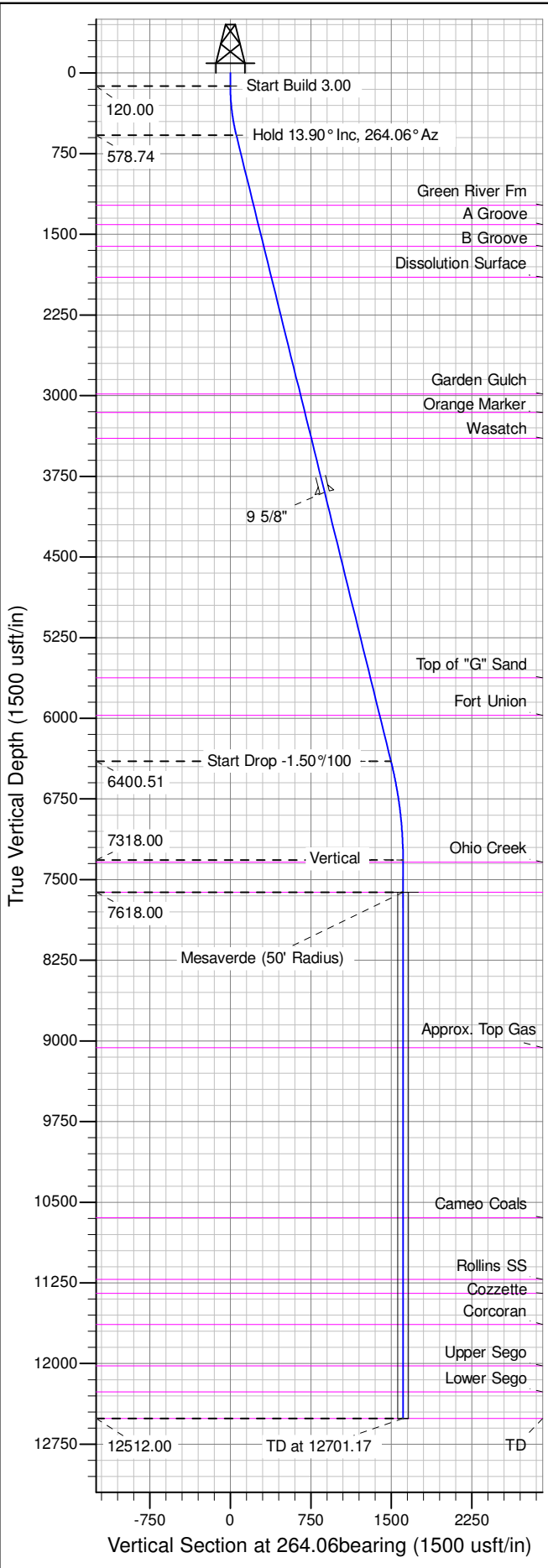
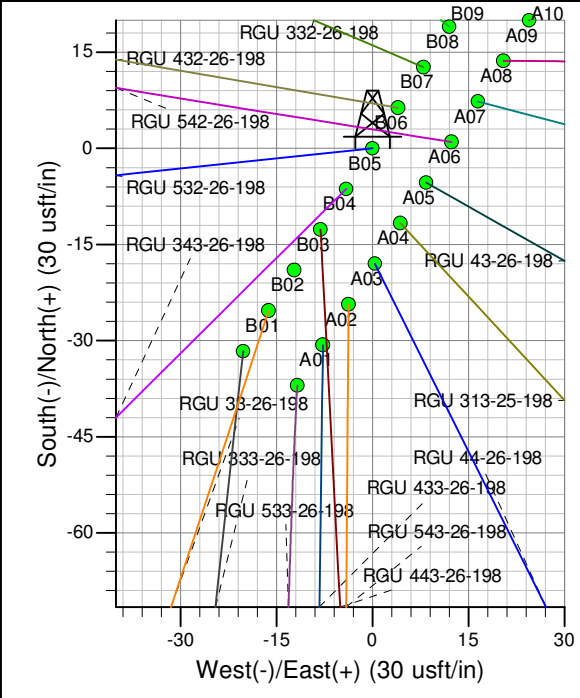
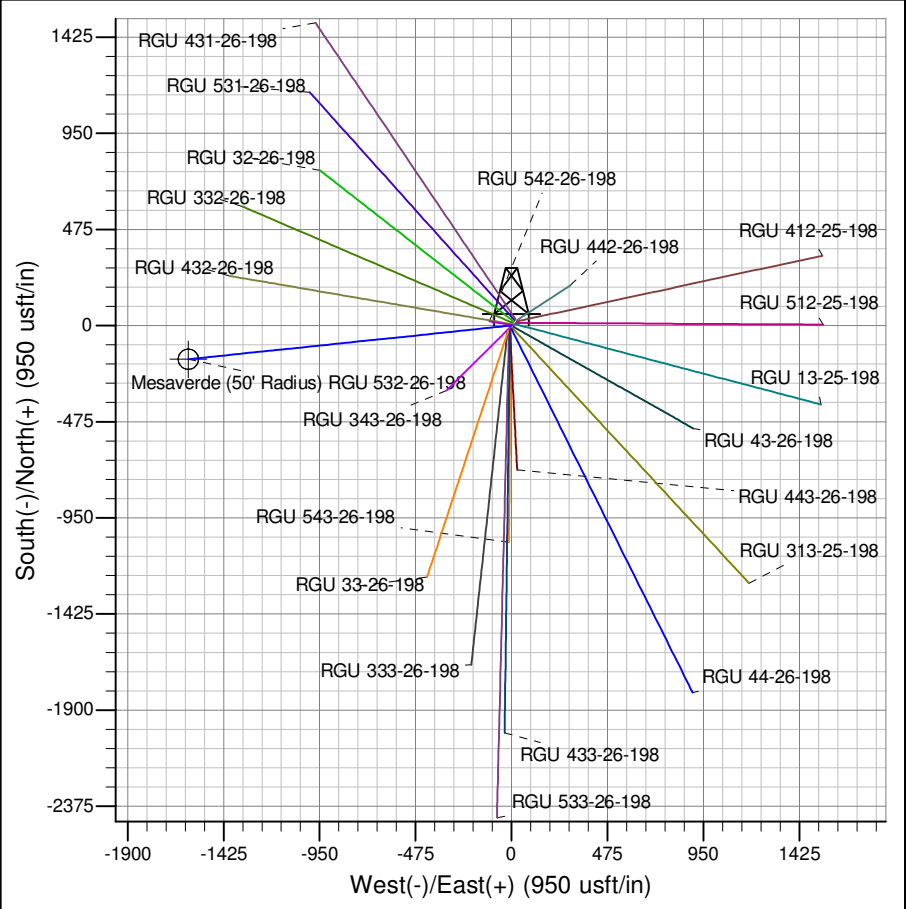




Well Name: RGU 532-26-198
Surface Location: RGU 42-26-198
North American Datum 1983 , US State Plane 1983 , Colorado Central Zone
Ground Elevation: 6622.00
+N/-S +E/-W Northing Easting Latitude Longitude Slot
0.00 0.00 1778090.90000 2199594.60000 39.93515 -108.35458 B06
KELLY BUSHING @ 6643.00usft (Cylcone 29 (21' RKB) kjs)



ANNOTATIONS									
TVD	MD	Inc	Azi	+N/-S	+E/-W	Vsect	Departure	Annotation	
120.00	120.00	0.00	0.00	0.00	0.00	0.00	0.00	Start Build 3.00	
578.74	583.27	13.90	264.06	-5.78	-55.61	55.91	55.91	Hold 13.90° Inc, 264.06° Az	
6400.51	6580.62	13.90	264.06	-154.77	-1488.44	1496.46	1496.46	Start Drop -1.50°/100	
7318.00	7507.17	0.00	0.00	-166.34	-1599.66	1608.29	1608.29	Vertical	
7618.00	7807.17	0.00	0.00	-166.34	-1599.66	1608.29	1608.29	Mesaverde	
12512.00	12701.17	0.00	0.00	-166.34	-1599.66	1608.29	1608.29	TD at 12701.17	



Azimuths to True North
Magnetic North: 10.36°

Magnetic Field
Strength: 52273.7snT
Dip Angle: 65.99°
Date: 1/24/2013
Model: IGRF2010

Project: RG 26-01S-098W
Site: RGU 42-26-198
Well: RGU 532-26-198
Design #2 12Aug14 mab