

Synergy Resources

Well Name: **SRC Gies D-15-22NCHZ**

Surface Location: SRC Gies Pad Sec.15-T7N-R65W

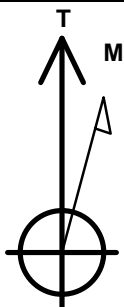
North American Datum 1983, US State Plane 1983, Colorado Northern Zone

Ground Elevation: 4838.0

+N/-S	+E/-W	Northing	Easting	Latitude	Longitude	Slot
0.0	0.0	1450672.44	3237938.81	40.567341	-104.643546	
RKB - 13' WELL @ 4851.0ft (RKB - 13')						

WELLBORE TARGET DETAILS

Name	TVD	+N/-S	+E/-W	Shape
SHL 272'FSL & 1067'FEL, Sec.15		0.0	0.0	Point
BHL 470'FSL & 1204'FEL, Sec.22	7510.0	-4516.8	-146.4	Point
Landing Pt. 460'FNL & 1221'FEL, Sec.22	7510.0	-726.8	-160.9	Point



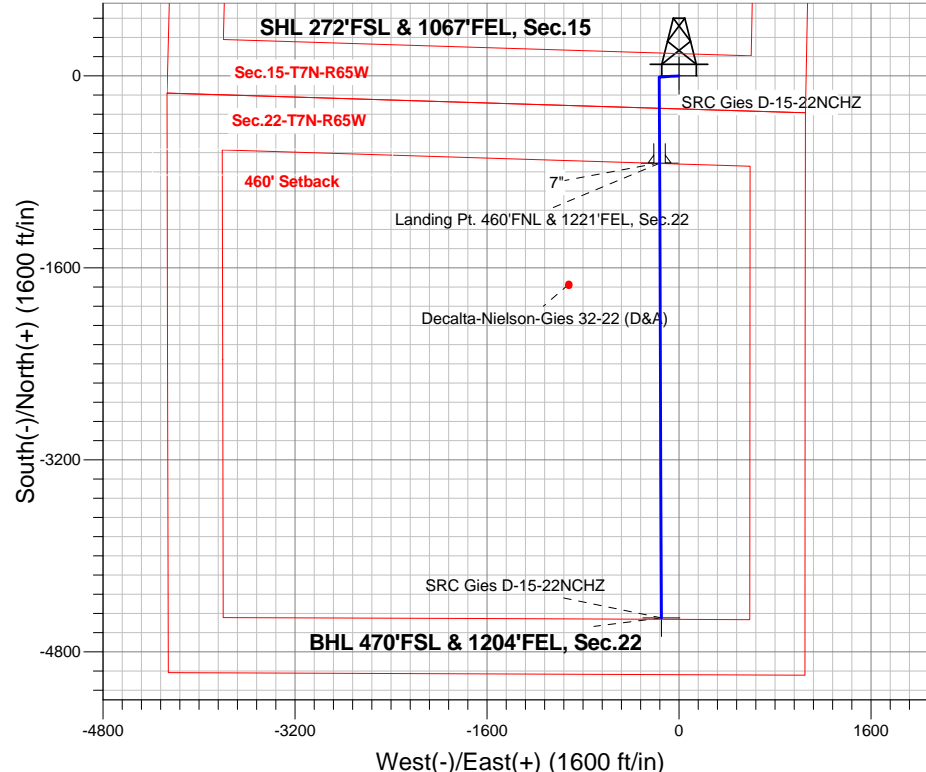
Azimuths to True North
Magnetic North: 8.37°

Magnetic Field
Strength: 52883.8snT
Dip Angle: 67.09°
Date: 10/1/2014
Model: IGRF2010

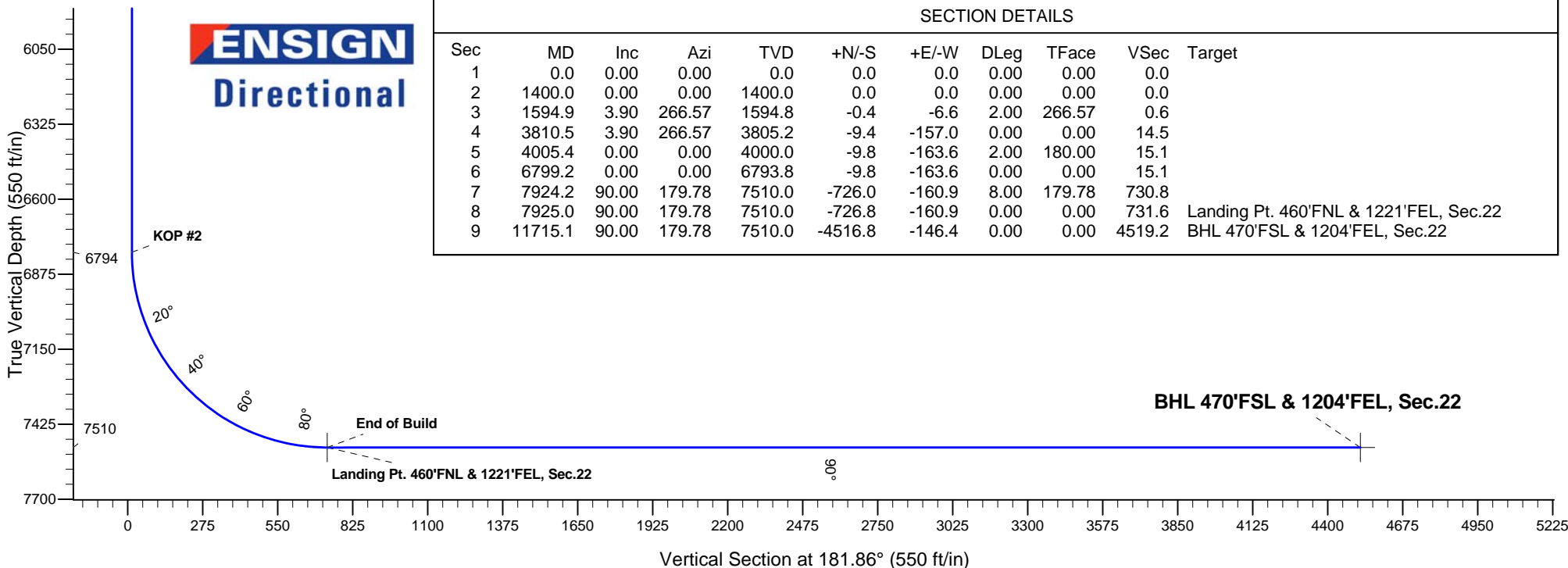
SRC Gies Pad Sec.15-T7N-R65W
SRC Gies D-15-22NCHZ
Plan #2 (10-01-14)
12:33, October 01 2014

ANNOTATIONS

TVD	MD	Annotation
1400.0	1400.0	KOP #1
6793.8	6799.2	KOP #2
7510.0	7924.2	End of Build



ENSIGN
Directional



SECTION DETAILS

Sec	MD	Inc	Azi	TVD	+N/-S	+E/-W	DLeg	TFace	VSec	Target
1	0.0	0.00	0.00	0.0	0.0	0.0	0.00	0.00	0.0	
2	1400.0	0.00	0.00	1400.0	0.0	0.0	0.00	0.00	0.0	
3	1594.9	3.90	266.57	1594.8	-0.4	-6.6	2.00	266.57	0.6	
4	3810.5	3.90	266.57	3805.2	-9.4	-157.0	0.00	0.00	14.5	
5	4005.4	0.00	0.00	4000.0	-9.8	-163.6	2.00	180.00	15.1	
6	6799.2	0.00	0.00	6793.8	-9.8	-163.6	0.00	0.00	15.1	
7	7924.2	90.00	179.78	7510.0	-726.0	-160.9	8.00	179.78	730.8	
8	7925.0	90.00	179.78	7510.0	-726.8	-160.9	0.00	0.00	731.6	Landing Pt. 460'FNL & 1221'FEL, Sec.22
9	11715.1	90.00	179.78	7510.0	-4516.8	-146.4	0.00	0.00	4519.2	BHL 470'FSL & 1204'FEL, Sec.22



Synergy Resources

SEC.15-T7N-R65W

SRC Gies Pad Sec.15-T7N-R65W

SRC Gies D-15-22NCHZ

Wellbore #1

Plan: Plan #2 (10-01-14)

Standard Planning Report

01 October, 2014

Database:	Landmark	Local Co-ordinate Reference:	Well SRC Gies D-15-22NCHZ
Company:	Synergy Resources	TVD Reference:	WELL @ 4851.0ft (RKB - 13')
Project:	SEC.15-T7N-R65W	MD Reference:	WELL @ 4851.0ft (RKB - 13')
Site:	SRC Gies Pad Sec.15-T7N-R65W	North Reference:	True
Well:	SRC Gies D-15-22NCHZ	Survey Calculation Method:	Minimum Curvature
Wellbore:	Wellbore #1		
Design:	Plan #2 (10-01-14)		

Project	SEC.15-T7N-R65W, Weld County, CO		
Map System:	US State Plane 1983	System Datum:	Mean Sea Level
Geo Datum:	North American Datum 1983		Using Well Reference Point
Map Zone:	Colorado Northern Zone		Using geodetic scale factor

Site						SRC Gies Pad Sec.15-T7N-R65W											
Site Position:						Northing:			1,450,674.24 ft			Latitude:			40.567348		
From:			Lat/Long			Easting:			3,237,858.77 ft			Longitude:			-104.643834		
Position Uncertainty:			0.0 ft			Slot Radius:			"			Grid Convergence:			0.55 °		

Well	SRC Gies D-15-22NCHZ					
Well Position	+N-S	-2.6 ft	Northing:	1,450,672.44 ft	Latitude:	40.567341
	+E-W	80.0 ft	Easting:	3,237,938.81 ft	Longitude:	-104.643546
Position Uncertainty		0.0 ft	Wellhead Elevation:	ft	Ground Level:	4,838.0 ft

Wellbore	Wellbore #1				
Magnetics	Model Name	Sample Date	Declination (°)	Dip Angle (°)	Field Strength (nT)
	IGRF2010	10/1/2014	8.37	67.09	52,884

Design	Plan #2 (10-01-14)			
Audit Notes:				
Version:	Phase:	PROTOTYPE	Tie On Depth:	0.0
Vertical Section:	Depth From (TVD) (ft)	+N/-S (ft)	+E/-W (ft)	Direction (°)
	0.0	0.0	0.0	181.86

Plan Sections										
Measured Depth (ft)	Inclination (°)	Azimuth (°)	Vertical Depth (ft)	+N/-S (ft)	+E/-W (ft)	Dogleg Rate (°/100ft)	Build Rate (°/100ft)	Turn Rate (°/100ft)	TFO (°)	Target
0.0	0.00	0.00	0.0	0.0	0.0	0.00	0.00	0.00	0.00	
1,400.0	0.00	0.00	1,400.0	0.0	0.0	0.00	0.00	0.00	0.00	
1,594.9	3.90	266.57	1,594.8	-0.4	-6.6	2.00	2.00	0.00	266.57	
3,810.5	3.90	266.57	3,805.2	-9.4	-157.0	0.00	0.00	0.00	0.00	
4,005.4	0.00	0.00	4,000.0	-9.8	-163.6	2.00	-2.00	0.00	180.00	
6,799.2	0.00	0.00	6,793.8	-9.8	-163.6	0.00	0.00	0.00	0.00	
7,924.2	90.00	179.78	7,510.0	-726.0	-160.9	8.00	8.00	0.00	179.78	
7,925.0	90.00	179.78	7,510.0	-726.8	-160.9	0.00	0.00	0.00	0.00	Landing Pt. 460'FN
11,715.1	90.00	179.78	7,510.0	-4,516.8	-146.4	0.00	0.00	0.00	0.00	BHL 470'FSL & 12C

Database:	Landmark	Local Co-ordinate Reference:	Well SRC Gies D-15-22NCHZ
Company:	Synergy Resources	TVD Reference:	WELL @ 4851.0ft (RKB - 13')
Project:	SEC.15-T7N-R65W	MD Reference:	WELL @ 4851.0ft (RKB - 13')
Site:	SRC Gies Pad Sec.15-T7N-R65W	North Reference:	True
Well:	SRC Gies D-15-22NCHZ	Survey Calculation Method:	Minimum Curvature
Wellbore:	Wellbore #1		
Design:	Plan #2 (10-01-14)		

Planned Survey									
Measured Depth (ft)	Inclination (°)	Azimuth (°)	Vertical Depth (ft)	+N/-S (ft)	+E/-W (ft)	Vertical Section (ft)	Dogleg Rate (°/100ft)	Build Rate (°/100ft)	Turn Rate (°/100ft)
0.0	0.00	0.00	0.0	0.0	0.0	0.0	0.00	0.00	0.00
1.0	0.00	0.00	1.0	0.0	0.0	0.0	0.00	0.00	0.00
SHL 272'FSL & 1067'FEL, Sec.15									
100.0	0.00	0.00	100.0	0.0	0.0	0.0	0.00	0.00	0.00
200.0	0.00	0.00	200.0	0.0	0.0	0.0	0.00	0.00	0.00
300.0	0.00	0.00	300.0	0.0	0.0	0.0	0.00	0.00	0.00
400.0	0.00	0.00	400.0	0.0	0.0	0.0	0.00	0.00	0.00
500.0	0.00	0.00	500.0	0.0	0.0	0.0	0.00	0.00	0.00
600.0	0.00	0.00	600.0	0.0	0.0	0.0	0.00	0.00	0.00
700.0	0.00	0.00	700.0	0.0	0.0	0.0	0.00	0.00	0.00
800.0	0.00	0.00	800.0	0.0	0.0	0.0	0.00	0.00	0.00
900.0	0.00	0.00	900.0	0.0	0.0	0.0	0.00	0.00	0.00
1,000.0	0.00	0.00	1,000.0	0.0	0.0	0.0	0.00	0.00	0.00
1,100.0	0.00	0.00	1,100.0	0.0	0.0	0.0	0.00	0.00	0.00
1,200.0	0.00	0.00	1,200.0	0.0	0.0	0.0	0.00	0.00	0.00
1,300.0	0.00	0.00	1,300.0	0.0	0.0	0.0	0.00	0.00	0.00
1,400.0	0.00	0.00	1,400.0	0.0	0.0	0.0	0.00	0.00	0.00
KOP #1									
1,500.0	2.00	266.57	1,500.0	-0.1	-1.7	0.2	2.00	2.00	0.00
1,594.9	3.90	266.57	1,594.8	-0.4	-6.6	0.6	2.00	2.00	0.00
1,600.0	3.90	266.57	1,599.8	-0.4	-7.0	0.6	0.00	0.00	0.00
1,700.0	3.90	266.57	1,699.6	-0.8	-13.7	1.3	0.00	0.00	0.00
1,800.0	3.90	266.57	1,799.4	-1.2	-20.5	1.9	0.00	0.00	0.00
1,900.0	3.90	266.57	1,899.1	-1.6	-27.3	2.5	0.00	0.00	0.00
2,000.0	3.90	266.57	1,998.9	-2.0	-34.1	3.1	0.00	0.00	0.00
2,100.0	3.90	266.57	2,098.7	-2.4	-40.9	3.8	0.00	0.00	0.00
2,200.0	3.90	266.57	2,198.4	-2.9	-47.7	4.4	0.00	0.00	0.00
2,300.0	3.90	266.57	2,298.2	-3.3	-54.5	5.0	0.00	0.00	0.00
2,400.0	3.90	266.57	2,398.0	-3.7	-61.3	5.7	0.00	0.00	0.00
2,500.0	3.90	266.57	2,497.8	-4.1	-68.0	6.3	0.00	0.00	0.00
2,600.0	3.90	266.57	2,597.5	-4.5	-74.8	6.9	0.00	0.00	0.00
2,700.0	3.90	266.57	2,697.3	-4.9	-81.6	7.5	0.00	0.00	0.00
2,800.0	3.90	266.57	2,797.1	-5.3	-88.4	8.2	0.00	0.00	0.00
2,900.0	3.90	266.57	2,896.8	-5.7	-95.2	8.8	0.00	0.00	0.00
3,000.0	3.90	266.57	2,996.6	-6.1	-102.0	9.4	0.00	0.00	0.00
3,100.0	3.90	266.57	3,096.4	-6.5	-108.8	10.0	0.00	0.00	0.00
3,200.0	3.90	266.57	3,196.1	-6.9	-115.5	10.7	0.00	0.00	0.00
3,300.0	3.90	266.57	3,295.9	-7.3	-122.3	11.3	0.00	0.00	0.00
3,400.0	3.90	266.57	3,395.7	-7.7	-129.1	11.9	0.00	0.00	0.00
3,500.0	3.90	266.57	3,495.4	-8.1	-135.9	12.5	0.00	0.00	0.00
3,600.0	3.90	266.57	3,595.2	-8.5	-142.7	13.2	0.00	0.00	0.00
3,700.0	3.90	266.57	3,695.0	-9.0	-149.5	13.8	0.00	0.00	0.00
3,800.0	3.90	266.57	3,794.7	-9.4	-156.3	14.4	0.00	0.00	0.00
3,810.5	3.90	266.57	3,805.2	-9.4	-157.0	14.5	0.00	0.00	0.00
3,900.0	2.11	266.57	3,894.6	-9.7	-161.7	14.9	2.00	-2.00	0.00
4,000.0	0.11	266.57	3,994.6	-9.8	-163.6	15.1	2.00	-2.00	0.00
4,005.4	0.00	0.00	4,000.0	-9.8	-163.6	15.1	2.00	-2.00	0.00
4,100.0	0.00	0.00	4,094.6	-9.8	-163.6	15.1	0.00	0.00	0.00
4,200.0	0.00	0.00	4,194.6	-9.8	-163.6	15.1	0.00	0.00	0.00
4,300.0	0.00	0.00	4,294.6	-9.8	-163.6	15.1	0.00	0.00	0.00
4,400.0	0.00	0.00	4,394.6	-9.8	-163.6	15.1	0.00	0.00	0.00
4,500.0	0.00	0.00	4,494.6	-9.8	-163.6	15.1	0.00	0.00	0.00
4,600.0	0.00	0.00	4,594.6	-9.8	-163.6	15.1	0.00	0.00	0.00
4,700.0	0.00	0.00	4,694.6	-9.8	-163.6	15.1	0.00	0.00	0.00

Database:	Landmark	Local Co-ordinate Reference:	Well SRC Gies D-15-22NCHZ
Company:	Synergy Resources	TVD Reference:	WELL @ 4851.0ft (RKB - 13')
Project:	SEC.15-T7N-R65W	MD Reference:	WELL @ 4851.0ft (RKB - 13')
Site:	SRC Gies Pad Sec.15-T7N-R65W	North Reference:	True
Well:	SRC Gies D-15-22NCHZ	Survey Calculation Method:	Minimum Curvature
Wellbore:	Wellbore #1		
Design:	Plan #2 (10-01-14)		

Planned Survey									
Measured Depth (ft)	Inclination (°)	Azimuth (°)	Vertical Depth (ft)	+N/-S (ft)	+E/-W (ft)	Vertical Section (ft)	Dogleg Rate (°/100ft)	Build Rate (°/100ft)	Turn Rate (°/100ft)
4,800.0	0.00	0.00	4,794.6	-9.8	-163.6	15.1	0.00	0.00	0.00
4,900.0	0.00	0.00	4,894.6	-9.8	-163.6	15.1	0.00	0.00	0.00
5,000.0	0.00	0.00	4,994.6	-9.8	-163.6	15.1	0.00	0.00	0.00
5,100.0	0.00	0.00	5,094.6	-9.8	-163.6	15.1	0.00	0.00	0.00
5,200.0	0.00	0.00	5,194.6	-9.8	-163.6	15.1	0.00	0.00	0.00
5,300.0	0.00	0.00	5,294.6	-9.8	-163.6	15.1	0.00	0.00	0.00
5,400.0	0.00	0.00	5,394.6	-9.8	-163.6	15.1	0.00	0.00	0.00
5,500.0	0.00	0.00	5,494.6	-9.8	-163.6	15.1	0.00	0.00	0.00
5,600.0	0.00	0.00	5,594.6	-9.8	-163.6	15.1	0.00	0.00	0.00
5,700.0	0.00	0.00	5,694.6	-9.8	-163.6	15.1	0.00	0.00	0.00
5,800.0	0.00	0.00	5,794.6	-9.8	-163.6	15.1	0.00	0.00	0.00
5,900.0	0.00	0.00	5,894.6	-9.8	-163.6	15.1	0.00	0.00	0.00
6,000.0	0.00	0.00	5,994.6	-9.8	-163.6	15.1	0.00	0.00	0.00
6,100.0	0.00	0.00	6,094.6	-9.8	-163.6	15.1	0.00	0.00	0.00
6,200.0	0.00	0.00	6,194.6	-9.8	-163.6	15.1	0.00	0.00	0.00
6,300.0	0.00	0.00	6,294.6	-9.8	-163.6	15.1	0.00	0.00	0.00
6,400.0	0.00	0.00	6,394.6	-9.8	-163.6	15.1	0.00	0.00	0.00
6,500.0	0.00	0.00	6,494.6	-9.8	-163.6	15.1	0.00	0.00	0.00
6,600.0	0.00	0.00	6,594.6	-9.8	-163.6	15.1	0.00	0.00	0.00
6,700.0	0.00	0.00	6,694.6	-9.8	-163.6	15.1	0.00	0.00	0.00
6,799.2	0.00	0.00	6,793.8	-9.8	-163.6	15.1	0.00	0.00	0.00
KOP #2									
6,800.0	0.06	179.78	6,794.6	-9.8	-163.6	15.1	7.71	7.71	0.00
6,900.0	8.06	179.78	6,894.2	-16.9	-163.6	22.2	8.00	8.00	0.00
7,000.0	16.06	179.78	6,992.0	-37.8	-163.5	43.0	8.00	8.00	0.00
7,100.0	24.06	179.78	7,085.8	-72.0	-163.4	77.3	8.00	8.00	0.00
7,200.0	32.06	179.78	7,174.0	-119.0	-163.2	124.3	8.00	8.00	0.00
7,300.0	40.06	179.78	7,254.8	-177.9	-163.0	183.0	8.00	8.00	0.00
7,400.0	48.06	179.78	7,326.6	-247.3	-162.7	252.5	8.00	8.00	0.00
7,500.0	56.06	179.78	7,388.0	-326.1	-162.4	331.2	8.00	8.00	0.00
7,600.0	64.06	179.78	7,437.9	-412.7	-162.1	417.8	8.00	8.00	0.00
7,700.0	72.06	179.78	7,475.2	-505.4	-161.7	510.4	8.00	8.00	0.00
7,800.0	80.06	179.78	7,499.3	-602.4	-161.3	607.3	8.00	8.00	0.00
7,900.0	88.06	179.78	7,509.6	-701.8	-161.0	706.6	8.00	8.00	0.00
7,924.2	90.00	179.78	7,510.0	-726.0	-160.9	730.8	8.00	8.00	0.00
End of Build - 7"									
7,925.0	90.00	179.78	7,510.0	-726.8	-160.9	731.6	0.29	0.29	0.00
Landing Pt. 460'FNL & 1221'FEL, Sec.22									
8,000.0	90.00	179.78	7,510.0	-801.8	-160.6	806.5	0.00	0.00	0.00
8,100.0	90.00	179.78	7,510.0	-901.8	-160.2	906.5	0.00	0.00	0.00
8,200.0	90.00	179.78	7,510.0	-1,001.8	-159.8	1,006.4	0.00	0.00	0.00
8,300.0	90.00	179.78	7,510.0	-1,101.8	-159.4	1,106.3	0.00	0.00	0.00
8,400.0	90.00	179.78	7,510.0	-1,201.8	-159.1	1,206.3	0.00	0.00	0.00
8,500.0	90.00	179.78	7,510.0	-1,301.8	-158.7	1,306.2	0.00	0.00	0.00
8,600.0	90.00	179.78	7,510.0	-1,401.8	-158.3	1,406.2	0.00	0.00	0.00
8,700.0	90.00	179.78	7,510.0	-1,501.8	-157.9	1,506.1	0.00	0.00	0.00
8,800.0	90.00	179.78	7,510.0	-1,601.8	-157.5	1,606.0	0.00	0.00	0.00
8,900.0	90.00	179.78	7,510.0	-1,701.8	-157.2	1,706.0	0.00	0.00	0.00
9,000.0	90.00	179.78	7,510.0	-1,801.8	-156.8	1,805.9	0.00	0.00	0.00
9,100.0	90.00	179.78	7,510.0	-1,901.8	-156.4	1,905.8	0.00	0.00	0.00
9,200.0	90.00	179.78	7,510.0	-2,001.8	-156.0	2,005.8	0.00	0.00	0.00
9,300.0	90.00	179.78	7,510.0	-2,101.8	-155.6	2,105.7	0.00	0.00	0.00
9,400.0	90.00	179.78	7,510.0	-2,201.8	-155.3	2,205.6	0.00	0.00	0.00

Database:	Landmark	Local Co-ordinate Reference:	Well SRC Gies D-15-22NCHZ
Company:	Synergy Resources	TVD Reference:	WELL @ 4851.0ft (RKB - 13')
Project:	SEC.15-T7N-R65W	MD Reference:	WELL @ 4851.0ft (RKB - 13')
Site:	SRC Gies Pad Sec.15-T7N-R65W	North Reference:	True
Well:	SRC Gies D-15-22NCHZ	Survey Calculation Method:	Minimum Curvature
Wellbore:	Wellbore #1		
Design:	Plan #2 (10-01-14)		

Planned Survey										
Measured Depth (ft)	Inclination (°)	Azimuth (°)	Vertical Depth (ft)	+N/-S (ft)	+E/-W (ft)	Vertical Section (ft)	Dogleg Rate (°/100ft)	Build Rate (°/100ft)	Turn Rate (°/100ft)	
9,500.0	90.00	179.78	7,510.0	-2,301.8	-154.9	2,305.6	0.00	0.00	0.00	
9,600.0	90.00	179.78	7,510.0	-2,401.8	-154.5	2,405.5	0.00	0.00	0.00	
9,700.0	90.00	179.78	7,510.0	-2,501.7	-154.1	2,505.4	0.00	0.00	0.00	
9,800.0	90.00	179.78	7,510.0	-2,601.7	-153.7	2,605.4	0.00	0.00	0.00	
9,900.0	90.00	179.78	7,510.0	-2,701.7	-153.3	2,705.3	0.00	0.00	0.00	
10,000.0	90.00	179.78	7,510.0	-2,801.7	-153.0	2,805.2	0.00	0.00	0.00	
10,100.0	90.00	179.78	7,510.0	-2,901.7	-152.6	2,905.2	0.00	0.00	0.00	
10,200.0	90.00	179.78	7,510.0	-3,001.7	-152.2	3,005.1	0.00	0.00	0.00	
10,300.0	90.00	179.78	7,510.0	-3,101.7	-151.8	3,105.0	0.00	0.00	0.00	
10,400.0	90.00	179.78	7,510.0	-3,201.7	-151.4	3,205.0	0.00	0.00	0.00	
10,500.0	90.00	179.78	7,510.0	-3,301.7	-151.1	3,304.9	0.00	0.00	0.00	
10,600.0	90.00	179.78	7,510.0	-3,401.7	-150.7	3,404.8	0.00	0.00	0.00	
10,700.0	90.00	179.78	7,510.0	-3,501.7	-150.3	3,504.8	0.00	0.00	0.00	
10,800.0	90.00	179.78	7,510.0	-3,601.7	-149.9	3,604.7	0.00	0.00	0.00	
10,900.0	90.00	179.78	7,510.0	-3,701.7	-149.5	3,704.6	0.00	0.00	0.00	
11,000.0	90.00	179.78	7,510.0	-3,801.7	-149.2	3,804.6	0.00	0.00	0.00	
11,100.0	90.00	179.78	7,510.0	-3,901.7	-148.8	3,904.5	0.00	0.00	0.00	
11,200.0	90.00	179.78	7,510.0	-4,001.7	-148.4	4,004.4	0.00	0.00	0.00	
11,300.0	90.00	179.78	7,510.0	-4,101.7	-148.0	4,104.4	0.00	0.00	0.00	
11,400.0	90.00	179.78	7,510.0	-4,201.7	-147.6	4,204.3	0.00	0.00	0.00	
11,500.0	90.00	179.78	7,510.0	-4,301.7	-147.3	4,304.2	0.00	0.00	0.00	
11,600.0	90.00	179.78	7,510.0	-4,401.7	-146.9	4,404.2	0.00	0.00	0.00	
11,700.0	90.00	179.78	7,510.0	-4,501.7	-146.5	4,504.1	0.00	0.00	0.00	
11,715.1	90.00	179.78	7,510.0	-4,516.8	-146.4	4,519.2	0.00	0.00	0.00	
BHL 470'FSL & 1204'FEL, Sec.22										

Targets										
Target Name	Dip Angle (°)	Dip Dir. (°)	TVD (ft)	+N/-S (ft)	+E/-W (ft)	Northing (ft)	Easting (ft)	Latitude		Longitude
BHL 470'FSL & 1204'I - hit/miss target - Shape - Point	0.00	0.00	7,510.0	-4,516.8	-146.4	1,446,154.53	3,237,836.00	40.554943		-104.644073
SHL 272'FSL & 1067'I - plan hits target center - Point	0.00	0.00	1.0	0.0	0.0	1,450,672.46	3,237,938.81	40.567341		-104.643546
Landing Pt. 460'FNL & - plan hits target center - Point	0.00	0.00	7,510.0	-726.8	-160.9	1,449,944.14	3,237,784.97	40.565346		-104.644125

Casing Points					
Measured Depth (ft)	Vertical Depth (ft)	Name		Casing Diameter (")	Hole Diameter (")
7,924.2	7,510.0	7"		7	7-1/2

Database:	Landmark	Local Co-ordinate Reference:	Well SRC Gies D-15-22NCHZ
Company:	Synergy Resources	TVD Reference:	WELL @ 4851.0ft (RKB - 13')
Project:	SEC.15-T7N-R65W	MD Reference:	WELL @ 4851.0ft (RKB - 13')
Site:	SRC Gies Pad Sec.15-T7N-R65W	North Reference:	True
Well:	SRC Gies D-15-22NCHZ	Survey Calculation Method:	Minimum Curvature
Wellbore:	Wellbore #1		
Design:	Plan #2 (10-01-14)		

Plan Annotations				
Measured Depth (ft)	Vertical Depth (ft)	Local Coordinates		Comment
		+N/-S (ft)	+E/-W (ft)	
1,400.0	1,400.0	0.0	0.0	KOP #1
6,799.2	6,793.8	-9.8	-163.6	KOP #2
7,924.2	7,510.0	-726.0	-160.9	End of Build



Synergy Resources

SEC.15-T7N-R65W

SRC Gies Pad Sec.15-T7N-R65W

SRC Gies D-15-22NCHZ

Wellbore #1

Plan #2 (10-01-14)

Anticollision Report

01 October, 2014

Company:	Synergy Resources	Local Co-ordinate Reference:	Well SRC Gies D-15-22NCHZ
Project:	SEC.15-T7N-R65W	TVD Reference:	WELL @ 4851.0ft (RKB - 13')
Reference Site:	SRC Gies Pad Sec.15-T7N-R65W	MD Reference:	WELL @ 4851.0ft (RKB - 13')
Site Error:	0.0ft	North Reference:	True
Reference Well:	SRC Gies D-15-22NCHZ	Survey Calculation Method:	Minimum Curvature
Well Error:	0.0ft	Output errors are at	2.00 sigma
Reference Wellbore	Wellbore #1	Database:	Landmark
Reference Design:	Plan #2 (10-01-14)	Offset TVD Reference:	Offset Datum

Offset Design													Offset Site Error:	0.0 ft
Existing Wells Pad Sec.15-T7N-R65W - Decalta-Nielson-Gies 32-22 (D&A) - Wellbore #1 - Wellbore #1													Offset Well Error:	0.0 ft
Survey Program: 7795-UNKNOWN														
Reference		Offset		Semi Major Axis			Distance							
Measured Depth (ft)	Vertical Depth (ft)	Measured Depth (ft)	Vertical Depth (ft)	Reference (ft)	Offset (ft)	Highside Toolface (°)	Offset Wellbore Centre +N/-S (ft)	+E/-W (ft)	Between Centres (ft)	Between Ellipses (ft)	Minimum Separation (ft)	Separation Factor	Warning	
9,100.0	7,510.0	7,492.0	7,492.0	39.7	149.8	90.00	-1,737.1	-917.7	779.0	589.5	189.42	4.112		
9,200.0	7,510.0	7,492.0	7,492.0	41.4	149.8	90.00	-1,737.1	-917.7	806.4	615.2	191.19	4.218		
9,300.0	7,510.0	7,492.0	7,492.0	43.2	149.8	90.00	-1,737.1	-917.7	844.9	651.9	192.97	4.378		
9,400.0	7,510.0	7,492.0	7,492.0	45.0	149.8	90.00	-1,737.1	-917.7	892.9	698.2	194.76	4.585		
9,500.0	7,510.0	7,492.0	7,492.0	46.8	149.8	90.00	-1,737.1	-917.7	949.1	752.6	196.57	4.829		

Company:	Synergy Resources	Local Co-ordinate Reference:	Well SRC Gies D-15-22NCHZ
Project:	SEC.15-T7N-R65W	TVD Reference:	WELL @ 4851.0ft (RKB - 13')
Reference Site:	SRC Gies Pad Sec.15-T7N-R65W	MD Reference:	WELL @ 4851.0ft (RKB - 13')
Site Error:	0.0ft	North Reference:	True
Reference Well:	SRC Gies D-15-22NCHZ	Survey Calculation Method:	Minimum Curvature
Well Error:	0.0ft	Output errors are at	2.00 sigma
Reference Wellbore	Wellbore #1	Database:	Landmark
Reference Design:	Plan #2 (10-01-14)	Offset TVD Reference:	Offset Datum

Offset Design												Offset Site Error:	0.0ft
Survey Program: 0-MWD												Offset Well Error:	0.0ft
Reference		Offset		Semi Major Axis			Distance						
Measured Depth (ft)	Vertical Depth (ft)	Measured Depth (ft)	Vertical Depth (ft)	Reference (ft)	Offset (ft)	Highside Toolface (°)	Offset Wellbore Centre +N/-S (ft)	+E/-W (ft)	Between Centres (ft)	Between Ellipses (ft)	Minimum Separation (ft)	Separation Factor	Warning
0.0	0.0	1.0	1.0	0.0	0.0	-88.18	2.5	-80.0	80.1	80.1	0.00	N/A	
100.0	100.0	101.0	101.0	0.1	0.1	-88.18	2.5	-80.0	80.1	79.8	0.23	352.648	
166.3	166.3	167.3	167.3	0.3	0.3	-88.18	2.5	-80.0	80.1	79.5	0.53	152.433 CC	
200.0	200.0	200.0	200.0	0.3	0.3	-88.18	2.5	-80.0	80.1	79.4	0.67	118.734 ES	
300.0	300.0	298.2	298.2	0.6	0.5	-88.20	2.6	-81.7	81.8	80.7	1.11	73.671	
400.0	400.0	395.2	395.1	0.8	0.8	-88.25	2.6	-86.7	86.9	85.4	1.55	56.018	
500.0	500.0	491.8	491.3	1.0	1.0	-88.33	2.8	-94.9	95.4	93.4	2.02	47.274	
600.0	600.0	587.7	586.5	1.2	1.3	-88.41	2.9	-106.2	107.2	104.7	2.52	42.604	
700.0	700.0	683.3	681.1	1.5	1.6	-88.50	3.2	-120.7	122.3	119.3	3.05	40.070	
800.0	800.0	782.0	778.4	1.7	1.9	-88.57	3.4	-136.7	138.6	135.0	3.63	38.210	
900.0	900.0	880.7	875.7	1.9	2.3	-88.63	3.6	-152.8	154.9	150.7	4.21	36.781	
1,000.0	1,000.0	979.3	973.1	2.1	2.7	-88.68	3.9	-168.9	171.2	166.4	4.80	35.655	
1,100.0	1,100.0	1,078.0	1,070.4	2.4	3.0	-88.72	4.1	-185.0	187.5	182.1	5.40	34.750	
1,200.0	1,200.0	1,176.7	1,167.8	2.6	3.4	-88.75	4.4	-201.1	203.8	197.8	5.99	34.010	
1,300.0	1,300.0	1,275.3	1,265.1	2.8	3.8	-88.78	4.6	-217.2	220.1	213.6	6.59	33.395	
1,400.0	1,400.0	1,374.0	1,362.5	3.0	4.2	-88.80	4.9	-233.2	236.4	229.3	7.19	32.877	
1,500.0	1,500.0	1,472.9	1,460.1	3.2	4.5	4.61	5.1	-249.4	251.0	244.4	6.61	37.997	
1,594.9	1,594.8	1,567.2	1,553.1	3.4	4.9	4.66	5.3	-264.7	261.7	254.7	7.03	37.242	
1,600.0	1,599.8	1,572.3	1,558.1	3.4	4.9	4.67	5.4	-265.6	262.2	255.1	7.05	37.192	
1,700.0	1,699.6	1,671.8	1,656.3	3.7	5.3	4.76	5.6	-281.8	271.7	264.2	7.50	36.240	
1,800.0	1,799.4	1,771.4	1,754.5	3.9	5.7	4.85	5.9	-298.0	281.3	273.4	7.95	35.379	
1,900.0	1,899.1	1,870.9	1,852.7	4.1	6.1	4.93	6.1	-314.2	290.9	282.5	8.41	34.599	
2,000.0	1,998.9	1,970.4	1,950.9	4.3	6.5	5.00	6.3	-330.5	300.5	291.6	8.87	33.889	
2,100.0	2,098.7	2,070.0	2,049.1	4.6	6.8	5.08	6.6	-346.7	310.1	300.7	9.33	33.240	
2,200.0	2,198.4	2,169.5	2,147.3	4.8	7.2	5.14	6.8	-362.9	319.7	309.9	9.79	32.646	
2,300.0	2,298.2	2,269.0	2,245.6	5.0	7.6	5.21	7.1	-379.1	329.2	319.0	10.26	32.101	
2,400.0	2,398.0	2,368.6	2,343.8	5.3	8.0	5.27	7.3	-395.4	338.8	328.1	10.72	31.598	
2,500.0	2,497.8	2,468.1	2,442.0	5.5	8.4	5.32	7.6	-411.6	348.4	337.2	11.19	31.133	
2,600.0	2,597.5	2,567.7	2,540.2	5.7	8.8	5.38	7.8	-427.8	358.0	346.3	11.66	30.703	
2,700.0	2,697.3	2,667.2	2,638.4	6.0	9.1	5.43	8.1	-444.0	367.6	355.4	12.13	30.303	
2,800.0	2,797.1	2,766.7	2,736.6	6.2	9.5	5.47	8.3	-460.3	377.2	364.6	12.60	29.931	
2,900.0	2,896.8	2,866.3	2,834.8	6.5	9.9	5.52	8.6	-476.5	386.7	373.7	13.07	29.584	
3,000.0	2,996.6	2,965.8	2,933.0	6.7	10.3	5.56	8.8	-492.7	396.3	382.8	13.55	29.260	
3,100.0	3,096.4	3,065.4	3,031.2	7.0	10.7	5.61	9.0	-508.9	405.9	391.9	14.02	28.956	
3,200.0	3,196.1	3,164.9	3,129.4	7.2	11.1	5.64	9.3	-525.2	415.5	401.0	14.49	28.671	
3,300.0	3,295.9	3,264.4	3,227.6	7.5	11.4	5.68	9.5	-541.4	425.1	410.1	14.97	28.402	
3,400.0	3,395.7	3,364.0	3,325.8	7.7	11.8	5.72	9.8	-557.6	434.7	419.2	15.44	28.149	
3,500.0	3,495.4	3,463.5	3,424.0	8.0	12.2	5.75	10.0	-573.8	444.3	428.3	15.92	27.911	
3,600.0	3,595.2	3,563.1	3,522.2	8.2	12.6	5.79	10.3	-590.1	453.8	437.4	16.39	27.685	
3,700.0	3,695.0	3,662.6	3,620.5	8.5	13.0	5.82	10.5	-606.3	463.4	446.6	16.87	27.472	
3,800.0	3,794.7	3,762.1	3,718.7	8.7	13.4	5.85	10.8	-622.5	473.0	455.7	17.35	27.270	
3,810.5	3,805.2	3,772.6	3,729.0	8.7	13.4	5.85	10.8	-624.2	474.0	456.6	17.40	27.249	
3,900.0	3,894.6	3,861.5	3,816.7	8.9	13.8	5.88	11.0	-638.7	484.0	466.2	17.78	27.217	
4,005.4	4,000.0	3,965.8	3,919.6	9.1	14.2	-87.55	11.3	-655.7	499.3	481.1	18.20	27.431	
4,100.0	4,094.6	4,059.1	4,011.7	9.3	14.5	-87.60	11.5	-670.9	514.7	496.0	18.62	27.637	
4,200.0	4,194.6	4,157.8	4,109.0	9.5	14.9	-87.64	11.7	-687.0	531.0	511.9	19.08	27.830	
4,300.0	4,294.6	4,256.5	4,206.4	9.7	15.3	-87.69	12.0	-703.1	547.3	527.7	19.54	28.013	
4,400.0	4,394.6	4,355.1	4,303.7	9.9	15.7	-87.73	12.2	-719.2	563.6	543.6	19.99	28.186	
4,500.0	4,494.6	4,453.8	4,401.1	10.1	16.0	-87.77	12.5	-735.3	579.9	559.4	20.45	28.351	
4,600.0	4,594.6	4,552.5	4,498.4	10.3	16.4	-87.81	12.7	-751.4	596.2	575.2	20.91	28.508	
4,700.0	4,694.6	4,651.1	4,595.7	10.5	16.8	-87.84	13.0	-767.4	612.5	591.1	21.37	28.657	
4,800.0	4,794.6	4,749.8	4,693.1	10.8	17.2	-87.87	13.2	-783.5	628.8	606.9	21.83	28.800	

CC - Min centre to center distance or convergent point, SF - min separation factor, ES - min ellipse separation

Company:	Synergy Resources	Local Co-ordinate Reference:	Well SRC Gies D-15-22NCHZ
Project:	SEC.15-T7N-R65W	TVD Reference:	WELL @ 4851.0ft (RKB - 13')
Reference Site:	SRC Gies Pad Sec.15-T7N-R65W	MD Reference:	WELL @ 4851.0ft (RKB - 13')
Site Error:	0.0ft	North Reference:	True
Reference Well:	SRC Gies D-15-22NCHZ	Survey Calculation Method:	Minimum Curvature
Well Error:	0.0ft	Output errors are at	2.00 sigma
Reference Wellbore	Wellbore #1	Database:	Landmark
Reference Design:	Plan #2 (10-01-14)	Offset TVD Reference:	Offset Datum

Offset Design													Offset Site Error:	0.0 ft
Survey Program: 0-MWD													Offset Well Error:	0.0 ft
Reference		Offset		Semi Major Axis			Distance							Warning
Measured Depth (ft)	Vertical Depth (ft)	Measured Depth (ft)	Vertical Depth (ft)	Reference (ft)	Offset (ft)	Highside Toolface (°)	Offset Wellbore Centre +N/-S (ft)	+E/-W (ft)	Between Centres (ft)	Between Ellipses (ft)	Minimum Separation (ft)	Separation Factor		
4,900.0	4,894.6	4,848.4	4,790.4	11.0	17.6	-87.91	13.5	-799.6	645.1	622.8	22.29	28.935		
5,000.0	4,994.6	4,947.1	4,887.8	11.2	18.0	-87.94	13.7	-815.7	661.4	638.6	22.75	29.065		
5,100.0	5,094.6	5,045.8	4,985.1	11.4	18.3	-87.97	13.9	-831.8	677.7	654.4	23.22	29.189		
5,200.0	5,194.6	5,144.4	5,082.5	11.6	18.7	-87.99	14.2	-847.9	694.0	670.3	23.68	29.308		
5,300.0	5,294.6	5,243.1	5,179.8	11.8	19.1	-88.02	14.4	-863.9	710.3	686.1	24.14	29.421		
5,400.0	5,394.6	5,341.8	5,277.1	12.0	19.5	-88.04	14.7	-880.0	726.6	701.9	24.60	29.530		
5,500.0	5,494.6	5,440.4	5,374.5	12.2	19.9	-88.07	14.9	-896.1	742.9	717.8	25.07	29.635		
5,600.0	5,594.6	5,539.1	5,471.8	12.4	20.2	-88.09	15.2	-912.2	759.2	733.6	25.53	29.735		
5,700.0	5,694.6	5,637.7	5,569.2	12.6	20.6	-88.11	15.4	-928.3	775.5	749.5	25.99	29.831		
5,800.0	5,794.6	5,736.4	5,666.5	12.9	21.0	-88.13	15.6	-944.3	791.8	765.3	26.46	29.924		
5,900.0	5,894.6	5,835.1	5,763.9	13.1	21.4	-88.15	15.9	-960.4	808.1	781.1	26.92	30.013		
6,000.0	5,994.6	5,933.7	5,861.2	13.3	21.8	-88.17	16.1	-976.5	824.4	797.0	27.39	30.098		
6,100.0	6,094.6	6,032.4	5,958.5	13.5	22.2	-88.19	16.4	-992.6	840.7	812.8	27.85	30.181		
6,200.0	6,194.6	6,141.0	6,065.7	13.7	22.6	-88.21	16.6	-1,010.1	856.8	828.5	28.33	30.240		
6,300.0	6,294.6	6,282.9	6,206.5	13.9	22.9	-88.23	16.9	-1,028.1	869.5	840.7	28.84	30.154		
6,400.0	6,394.6	6,426.4	6,349.5	14.1	23.2	-88.24	17.1	-1,039.3	877.3	848.0	29.31	29.934		
6,500.0	6,494.6	6,570.6	6,493.6	14.4	23.4	-88.25	17.1	-1,043.2	880.0	850.3	29.77	29.562		
6,600.0	6,594.6	6,672.5	6,595.6	14.6	23.5	-88.25	17.1	-1,043.2	880.0	849.9	30.17	29.170		
6,700.0	6,694.6	6,772.5	6,695.6	14.8	23.7	-88.25	17.1	-1,043.2	880.0	849.5	30.57	28.789		
6,799.2	6,793.8	6,871.8	6,794.8	15.0	23.8	-88.25	17.1	-1,043.2	880.0	849.1	30.97	28.420		
6,850.0	6,844.5	6,924.8	6,847.8	15.1	23.8	91.96	15.1	-1,043.2	880.0	848.9	31.15	28.249		
6,900.0	6,894.2	6,977.0	6,899.6	15.2	23.9	91.94	9.3	-1,043.2	880.0	848.7	31.33	28.087		
6,950.0	6,943.5	7,029.1	6,950.9	15.3	24.0	91.91	-0.3	-1,043.1	880.0	848.5	31.51	27.926		
7,000.0	6,992.0	7,081.2	7,001.3	15.4	24.0	91.87	-13.6	-1,043.1	880.0	848.3	31.70	27.762		
7,050.0	7,039.5	7,133.3	7,050.5	15.5	24.1	91.82	-30.4	-1,043.0	880.0	848.1	31.89	27.591		
7,100.0	7,085.8	7,185.3	7,098.3	15.6	24.2	91.77	-50.8	-1,043.0	879.9	847.8	32.10	27.408		
7,150.0	7,130.7	7,237.2	7,144.5	15.7	24.3	91.70	-74.6	-1,042.9	879.9	847.6	32.34	27.209		
7,200.0	7,174.0	7,289.1	7,188.7	15.8	24.3	91.62	-101.6	-1,042.8	879.9	847.3	32.60	26.987		
7,250.0	7,215.4	7,340.8	7,230.8	16.0	24.4	91.54	-131.6	-1,042.7	879.8	846.9	32.91	26.738		
7,300.0	7,254.8	7,392.4	7,270.6	16.1	24.5	91.45	-164.6	-1,042.5	879.8	846.5	33.26	26.456		
7,350.0	7,291.9	7,443.9	7,307.7	16.3	24.7	91.35	-200.2	-1,042.4	879.8	846.1	33.66	26.137		
7,400.0	7,326.6	7,495.3	7,342.2	16.5	24.8	91.24	-238.4	-1,042.2	879.7	845.6	34.13	25.778		
7,450.0	7,358.6	7,546.6	7,373.7	16.8	24.9	91.13	-278.8	-1,042.1	879.7	845.0	34.66	25.379		
7,500.0	7,388.0	7,597.8	7,402.2	17.1	25.1	91.02	-321.2	-1,041.9	879.7	844.4	35.27	24.940		
7,550.0	7,414.4	7,648.8	7,427.6	17.4	25.3	90.89	-365.5	-1,041.8	879.6	843.7	35.96	24.463		
7,600.0	7,437.9	7,699.7	7,449.7	17.8	25.5	90.77	-411.3	-1,041.6	879.6	842.9	36.72	23.953		
7,650.0	7,458.1	7,750.4	7,468.4	18.2	25.8	90.64	-458.4	-1,041.4	879.6	842.0	37.57	23.414		
7,700.0	7,475.2	7,801.0	7,483.7	18.7	26.1	90.51	-506.6	-1,041.2	879.6	841.1	38.49	22.852		
7,750.0	7,488.9	7,851.4	7,495.5	19.2	26.4	90.37	-555.7	-1,041.1	879.5	840.1	39.48	22.275		
7,800.0	7,499.3	7,901.7	7,503.8	19.7	26.8	90.24	-605.2	-1,040.9	879.5	839.0	40.55	21.691		
7,850.0	7,506.2	7,951.8	7,508.7	20.3	27.2	90.10	-655.1	-1,040.7	879.5	837.9	41.68	21.104		
7,871.4	7,508.1	7,973.2	7,509.6	20.5	27.3	90.04	-676.5	-1,040.6	879.5	837.3	42.18	20.853		
7,900.0	7,509.6	8,001.8	7,510.0	20.9	27.6	89.96	-705.1	-1,040.5	879.5	836.7	42.86	20.523		
7,924.2	7,510.0	8,026.0	7,510.0	21.2	27.8	89.93	-729.3	-1,040.4	879.5	836.1	43.45	20.241		
7,925.0	7,510.0	8,026.8	7,510.0	21.2	27.8	89.93	-730.1	-1,040.4	879.5	836.1	43.47	20.232		
8,000.0	7,510.0	8,101.8	7,510.0	22.1	28.5	89.93	-805.1	-1,040.1	879.5	834.2	45.35	19.394		
8,100.0	7,510.0	8,201.8	7,510.0	23.5	29.5	89.93	-905.1	-1,039.7	879.5	831.5	48.02	18.315		
8,200.0	7,510.0	8,301.8	7,510.0	24.9	30.6	89.93	-1,005.1	-1,039.4	879.5	828.7	50.85	17.297		
8,300.0	7,510.0	8,401.8	7,510.0	26.4	31.9	89.93	-1,105.1	-1,039.0	879.5	825.7	53.80	16.349		
8,400.0	7,510.0	8,501.8	7,510.0	27.9	33.1	89.93	-1,205.1	-1,038.6	879.5	822.7	56.86	15.469		
8,500.0	7,510.0	8,601.8	7,510.0	29.5	34.5	89.93	-1,305.1	-1,038.2	879.5	819.5	60.01	14.657		
8,600.0	7,510.0	8,701.8	7,510.0	31.1	35.9	89.93	-1,405.1	-1,037.8	879.5	816.3	63.23	13.909		

CC - Min centre to center distance or convergent point, SF - min separation factor, ES - min ellipse separation

Company:	Synergy Resources	Local Co-ordinate Reference:	Well SRC Gies D-15-22NCHZ
Project:	SEC.15-T7N-R65W	TVD Reference:	WELL @ 4851.0ft (RKB - 13')
Reference Site:	SRC Gies Pad Sec.15-T7N-R65W	MD Reference:	WELL @ 4851.0ft (RKB - 13')
Site Error:	0.0ft	North Reference:	True
Reference Well:	SRC Gies D-15-22NCHZ	Survey Calculation Method:	Minimum Curvature
Well Error:	0.0ft	Output errors are at	2.00 sigma
Reference Wellbore	Wellbore #1	Database:	Landmark
Reference Design:	Plan #2 (10-01-14)	Offset TVD Reference:	Offset Datum

Offset Design SRC Gies Pad Sec.15-T7N-R65W - SRC Gies 34-15-22NCHZ - Wellbore #1 - Plan #2 (10-01-14)												Offset Site Error:	0.0 ft
Survey Program: 0-MWD												Offset Well Error:	0.0 ft
Reference		Offset		Semi Major Axis			Distance						
Measured Depth (ft)	Vertical Depth (ft)	Measured Depth (ft)	Vertical Depth (ft)	Reference (ft)	Offset (ft)	Highside Toolface (°)	Offset Wellbore Centre +N/-S (ft)	+E/-W (ft)	Between Centres (ft)	Between Ellipses (ft)	Minimum Separation (ft)	Separation Factor	Warning
8,700.0	7,510.0	8,801.8	7,510.0	32.8	37.3	89.93	-1,505.1	-1,037.5	879.6	813.0	66.53	13.221	
8,800.0	7,510.0	8,901.8	7,510.0	34.5	38.8	89.93	-1,605.1	-1,037.1	879.6	809.7	69.88	12.587	
8,900.0	7,510.0	9,001.8	7,510.0	36.2	40.4	89.93	-1,705.1	-1,036.7	879.6	806.3	73.28	12.003	
9,000.0	7,510.0	9,101.8	7,510.0	37.9	41.9	89.93	-1,805.1	-1,036.3	879.6	802.8	76.72	11.464	
9,100.0	7,510.0	9,201.8	7,510.0	39.7	43.5	89.93	-1,905.1	-1,035.9	879.6	799.4	80.20	10.967	
9,200.0	7,510.0	9,301.8	7,510.0	41.4	45.2	89.93	-2,005.1	-1,035.6	879.6	795.9	83.71	10.507	
9,300.0	7,510.0	9,401.8	7,510.0	43.2	46.8	89.93	-2,105.1	-1,035.2	879.6	792.3	87.25	10.081	
9,400.0	7,510.0	9,501.8	7,510.0	45.0	48.5	89.93	-2,205.1	-1,034.8	879.6	788.8	90.82	9.685	
9,500.0	7,510.0	9,601.8	7,510.0	46.8	50.2	89.93	-2,305.1	-1,034.4	879.6	785.2	94.40	9.317	
9,600.0	7,510.0	9,701.8	7,510.0	48.6	51.9	89.93	-2,405.1	-1,034.1	879.6	781.6	98.01	8.974	
9,700.0	7,510.0	9,801.8	7,510.0	50.4	53.6	89.93	-2,505.1	-1,033.7	879.6	777.9	101.64	8.654	
9,800.0	7,510.0	9,901.8	7,510.0	52.3	55.3	89.93	-2,605.1	-1,033.3	879.6	774.3	105.28	8.355	
9,900.0	7,510.0	10,001.8	7,510.0	54.1	57.1	89.93	-2,705.1	-1,032.9	879.6	770.7	108.93	8.074	
10,000.0	7,510.0	10,101.8	7,510.0	55.9	58.8	89.93	-2,805.1	-1,032.5	879.6	767.0	112.60	7.811	
10,100.0	7,510.0	10,201.8	7,510.0	57.8	60.6	89.93	-2,905.1	-1,032.2	879.6	763.3	116.28	7.564	
10,200.0	7,510.0	10,301.8	7,510.0	59.6	62.4	89.93	-3,005.1	-1,031.8	879.6	759.6	119.97	7.332	
10,300.0	7,510.0	10,401.8	7,510.0	61.5	64.2	89.93	-3,105.1	-1,031.4	879.6	755.9	123.67	7.112	
10,400.0	7,510.0	10,501.8	7,510.0	63.3	66.0	89.93	-3,205.1	-1,031.0	879.6	752.2	127.38	6.905	
10,500.0	7,510.0	10,601.8	7,510.0	65.2	67.8	89.93	-3,305.1	-1,030.7	879.6	748.5	131.10	6.709	
10,600.0	7,510.0	10,701.8	7,510.0	67.1	69.6	89.93	-3,405.1	-1,030.3	879.6	744.8	134.83	6.524	
10,700.0	7,510.0	10,801.8	7,510.0	68.9	71.4	89.93	-3,505.1	-1,029.9	879.6	741.0	138.56	6.348	
10,800.0	7,510.0	10,901.8	7,510.0	70.8	73.2	89.93	-3,605.1	-1,029.5	879.6	737.3	142.30	6.182	
10,900.0	7,510.0	11,001.8	7,510.0	72.7	75.0	89.93	-3,705.1	-1,029.1	879.6	733.6	146.04	6.023	
11,000.0	7,510.0	11,101.8	7,510.0	74.6	76.9	89.93	-3,805.1	-1,028.8	879.6	729.8	149.79	5.872	
11,100.0	7,510.0	11,201.8	7,510.0	76.4	78.7	89.93	-3,905.1	-1,028.4	879.6	726.1	153.54	5.729	
11,200.0	7,510.0	11,301.8	7,510.0	78.3	80.5	89.93	-4,005.1	-1,028.0	879.6	722.3	157.30	5.592	
11,300.0	7,510.0	11,401.8	7,510.0	80.2	82.4	89.93	-4,105.1	-1,027.6	879.6	718.6	161.07	5.461	
11,400.0	7,510.0	11,501.8	7,510.0	82.1	84.2	89.93	-4,205.1	-1,027.3	879.6	714.8	164.83	5.336	
11,500.0	7,510.0	11,601.8	7,510.0	84.0	86.1	89.93	-4,305.1	-1,026.9	879.6	711.0	168.60	5.217	
11,600.0	7,510.0	11,701.8	7,510.0	85.9	87.9	89.93	-4,405.1	-1,026.5	879.6	707.3	172.38	5.103	
11,700.0	7,510.0	11,801.8	7,510.0	87.8	89.8	89.93	-4,505.1	-1,026.1	879.6	703.5	176.16	4.993	
11,700.1	7,510.0	11,801.9	7,510.0	87.8	89.8	89.93	-4,505.2	-1,026.1	879.6	703.5	176.16	4.993	
11,715.1	7,510.0	11,809.9	7,510.0	88.1	90.0	89.93	-4,513.2	-1,026.1	879.7	703.1	176.60	4.981 SF	

SRC Gies Pad Sec.15-T7N-R65W - SRC Gies 34-15-22NHZ - Wellbore #1 - Plan #1 (5-7-14)													Offset Site Error:	0.0 ft
Survey Program: 0-MWD													Offset Well Error:	0.0 ft
Reference		Offset		Semi Major Axis			Distance							
Measured Depth	Vertical Depth	Measured Depth	Vertical Depth	Reference	Offset	Highside Toolface	Offset Wellbore Centre		Between Centres	Between Ellipses	Minimum Separation	Separation Factor	Warning	
(ft)	(ft)	(ft)	(ft)	(ft)	(ft)	(°)	+N/-S (ft)	+E/-W (ft)	(ft)	(ft)	(ft)			
0.0	0.0	0.0	0.0	0.0	0.0	-88.26	1.8	-60.0	60.0					
100.0	100.0	100.0	100.0	0.1	0.1	-88.26	1.8	-60.0	60.0	59.8	0.22	267.119		
200.0	200.0	200.0	200.0	0.3	0.3	-88.26	1.8	-60.0	60.0	59.4	0.67	89.040		
300.0	300.0	300.0	300.0	0.6	0.6	-88.26	1.8	-60.0	60.0	58.9	1.12	53.424		
400.0	400.0	400.0	400.0	0.8	0.8	-88.26	1.8	-60.0	60.0	58.5	1.57	38.160 CC, ES		
500.0	500.0	497.9	497.9	1.0	1.0	-88.29	1.8	-61.7	61.7	59.7	2.01	30.767		
600.0	600.0	595.6	595.4	1.2	1.2	-88.37	1.9	-66.7	66.9	64.4	2.44	27.391		
700.0	700.0	692.8	692.3	1.5	1.4	-88.47	2.0	-75.0	75.4	72.5	2.90	26.028		
800.0	800.0	789.4	788.2	1.7	1.7	-88.59	2.1	-86.4	87.3	83.9	3.38	25.824		
900.0	900.0	888.3	886.1	1.9	2.0	-88.69	2.3	-100.0	101.0	97.1	3.90	25.918		
1,000.0	1,000.0	987.3	984.2	2.1	2.3	-88.77	2.4	-113.6	114.7	110.3	4.43	25.908		
1,100.0	1,100.0	1,086.4	1,082.4	2.4	2.6	-88.83	2.6	-127.2	128.5	123.5	4.97	25.853		
1,200.0	1,200.0	1,185.4	1,180.5	2.6	2.9	-88.88	2.8	-140.8	142.2	136.7	5.52	25.781		
1,300.0	1,300.0	1,284.5	1,278.6	2.8	3.3	-88.92	2.9	-154.4	155.9	149.9	6.07	25.703		
1,400.0	1,400.0	1,383.5	1,376.7	3.0	3.6	-88.95	3.1	-168.0	169.7	163.1	6.62	25.627		
1,500.0	1,500.0	1,482.8	1,475.0	3.2	3.9	4.47	3.2	-181.7	181.7	175.2	6.49	27.987		
1,594.9	1,594.8	1,577.4	1,568.7	3.4	4.2	4.55	3.4	-194.7	189.9	183.0	6.90	27.518		
1,600.0	1,599.8	1,582.4	1,573.7	3.4	4.3	4.55	3.4	-195.4	190.2	183.3	6.92	27.480		
1,700.0	1,699.6	1,682.2	1,672.5	3.7	4.6	4.68	3.5	-209.1	197.2	189.9	7.36	26.785		
1,800.0	1,799.4	1,781.9	1,771.3	3.9	4.9	4.79	3.7	-222.8	204.2	196.4	7.81	26.155		
1,900.0	1,899.1	1,881.7	1,870.1	4.1	5.3	4.90	3.9	-236.5	211.2	203.0	8.26	25.583		
2,000.0	1,998.9	1,981.4	1,968.9	4.3	5.6	5.00	4.0	-250.2	218.2	209.5	8.71	25.062		
2,100.0	2,098.7	2,081.2	2,067.7	4.6	6.0	5.09	4.2	-263.9	225.2	216.1	9.16	24.585		
2,200.0	2,198.4	2,180.9	2,166.6	4.8	6.3	5.18	4.3	-277.6	232.2	222.6	9.62	24.148		
2,300.0	2,298.2	2,280.7	2,265.4	5.0	6.6	5.27	4.5	-291.3	239.2	229.1	10.07	23.747		
2,400.0	2,398.0	2,380.5	2,364.2	5.3	7.0	5.34	4.6	-305.0	246.2	235.7	10.53	23.377		
2,500.0	2,497.8	2,480.2	2,463.0	5.5	7.3	5.42	4.8	-318.7	253.2	242.2	10.99	23.034		
2,600.0	2,597.5	2,580.0	2,561.8	5.7	7.7	5.49	5.0	-332.4	260.2	248.8	11.45	22.717		
2,700.0	2,697.3	2,679.7	2,660.6	6.0	8.0	5.56	5.1	-346.1	267.2	255.3	11.92	22.423		
2,800.0	2,797.1	2,779.5	2,759.4	6.2	8.4	5.62	5.3	-359.8	274.2	261.8	12.38	22.148		
2,900.0	2,896.8	2,879.2	2,858.2	6.5	8.7	5.68	5.4	-373.5	281.2	268.4	12.85	21.892		
3,000.0	2,996.6	2,979.0	2,957.0	6.7	9.1	5.74	5.6	-387.2	288.2	274.9	13.31	21.653		
3,100.0	3,096.4	3,078.7	3,055.8	7.0	9.4	5.79	5.8	-400.9	295.2	281.4	13.78	21.428		
3,200.0	3,196.1	3,178.5	3,154.6	7.2	9.7	5.84	5.9	-414.6	302.2	288.0	14.24	21.217		
3,300.0	3,295.9	3,278.2	3,253.4	7.5	10.1	5.89	6.1	-428.3	309.2	294.5	14.71	21.019		
3,400.0	3,395.7	3,378.0	3,352.3	7.7	10.4	5.94	6.2	-442.0	316.2	301.0	15.18	20.833		
3,500.0	3,495.4	3,477.8	3,451.1	8.0	10.8	5.99	6.4	-455.7	323.2	307.6	15.65	20.656		
3,600.0	3,595.2	3,577.5	3,549.9	8.2	11.1	6.03	6.5	-469.4	330.2	314.1	16.12	20.490		
3,700.0	3,695.0	3,677.3	3,648.7	8.5	11.5	6.07	6.7	-483.1	337.2	320.6	16.58	20.332		
3,800.0	3,794.7	3,777.0	3,747.5	8.7	11.8	6.11	6.9	-496.8	344.2	327.2	17.05	20.183		
3,810.5	3,805.2	3,787.5	3,757.9	8.7	11.8	6.12	6.9	-498.3	344.9	327.8	17.10	20.168		
3,900.0	3,894.6	3,876.7	3,846.2	8.9	12.2	6.14	7.0	-510.5	352.6	335.1	17.49	20.158		
4,005.4	4,000.0	3,981.3	3,949.9	9.1	12.5	-87.31	7.2	-524.9	365.2	347.2	17.91	20.385		
4,100.0	4,094.6	4,075.0	4,042.7	9.3	12.8	-87.38	7.3	-537.8	378.1	359.8	18.33	20.630		
4,200.0	4,194.6	4,174.1	4,140.8	9.5	13.2	-87.45	7.5	-551.4	391.9	373.1	18.78	20.867		
4,300.0	4,294.6	4,273.1	4,238.9	9.7	13.5	-87.51	7.6	-565.0	405.6	386.4	19.23	21.092		
4,400.0	4,394.6	4,372.2	4,337.0	9.9	13.9	-87.57	7.8	-578.6	419.3	399.7	19.68	21.305		
4,500.0	4,494.6	4,471.2	4,435.1	10.1	14.2	-87.63	8.0	-592.2	433.1	412.9	20.13	21.509		
4,600.0	4,594.6	4,570.3	4,533.2	10.3	14.6	-87.68	8.1	-605.8	446.8	426.2	20.59	21.702		
4,700.0	4,694.6	4,669.3	4,631.3	10.5	14.9	-87.73	8.3	-619.4	460.5	439.5	21.04	21.887		
4,800.0	4,794.6	4,768.4	4,729.4	10.8	15.2	-87.78	8.4	-633.0	474.3	452.8	21.50	22.064		
4,900.0	4,894.6	4,867.4	4,827.6	11.0	15.6	-87.82	8.6	-646.6	488.0	466.0	21.95	22.232		

Company:	Synergy Resources	Local Co-ordinate Reference:	Well SRC Gies D-15-22NCHZ
Project:	SEC.15-T7N-R65W	TVD Reference:	WELL @ 4851.0ft (RKB - 13')
Reference Site:	SRC Gies Pad Sec.15-T7N-R65W	MD Reference:	WELL @ 4851.0ft (RKB - 13')
Site Error:	0.0ft	North Reference:	True
Reference Well:	SRC Gies D-15-22NCHZ	Survey Calculation Method:	Minimum Curvature
Well Error:	0.0ft	Output errors are at	2.00 sigma
Reference Wellbore	Wellbore #1	Database:	Landmark
Reference Design:	Plan #2 (10-01-14)	Offset TVD Reference:	Offset Datum

Offset Design												Offset Site Error:	0.0 ft
Survey Program: 0-MWD												Offset Well Error:	0.0 ft
Reference		Offset		Semi Major Axis			Distance						
Measured Depth (ft)	Vertical Depth (ft)	Measured Depth (ft)	Vertical Depth (ft)	Reference (ft)	Offset (ft)	Highside Toolface (°)	Offset Wellbore Centre +N/-S (ft)	+E/-W (ft)	Between Centres (ft)	Between Ellipses (ft)	Minimum Separation (ft)	Separation Factor	Warning
5,000.0	4,994.6	4,966.5	4,925.7	11.2	15.9	-87.86	8.7	-660.2	501.7	479.3	22.41	22.394	
5,100.0	5,094.6	5,065.5	5,023.8	11.4	16.3	-87.90	8.9	-673.8	515.5	492.6	22.86	22.548	
5,200.0	5,194.6	5,164.6	5,121.9	11.6	16.6	-87.94	9.1	-687.4	529.2	505.9	23.32	22.696	
5,300.0	5,294.6	5,263.6	5,220.0	11.8	17.0	-87.97	9.2	-701.1	542.9	519.2	23.77	22.838	
5,400.0	5,394.6	5,362.7	5,318.1	12.0	17.3	-88.01	9.4	-714.7	556.7	532.4	24.23	22.974	
5,500.0	5,494.6	5,461.7	5,416.2	12.2	17.6	-88.04	9.5	-728.3	570.4	545.7	24.69	23.105	
5,600.0	5,594.6	5,560.8	5,514.3	12.4	18.0	-88.07	9.7	-741.9	584.1	559.0	25.14	23.231	
5,700.0	5,694.6	5,659.8	5,612.5	12.6	18.3	-88.10	9.8	-755.5	597.9	572.3	25.60	23.352	
5,800.0	5,794.6	5,758.9	5,710.6	12.9	18.7	-88.13	10.0	-769.1	611.6	585.5	26.06	23.469	
5,900.0	5,894.6	5,857.9	5,808.7	13.1	19.0	-88.15	10.2	-782.7	625.3	598.8	26.52	23.581	
6,000.0	5,994.6	5,957.1	5,906.9	13.3	19.4	-88.18	10.3	-796.3	639.1	612.1	26.98	23.689	
6,100.0	6,094.6	6,085.3	6,034.2	13.5	19.7	-88.21	10.5	-811.1	650.6	623.1	27.45	23.704	
6,200.0	6,194.6	6,214.6	6,163.2	13.7	19.9	-88.22	10.6	-820.1	657.6	629.7	27.89	23.577	
6,300.0	6,294.6	6,344.4	6,292.9	13.9	20.1	-88.23	10.6	-823.4	660.1	631.8	28.33	23.299	
6,400.0	6,394.6	6,446.0	6,394.6	14.1	20.2	-88.23	10.6	-823.4	660.1	631.4	28.74	22.970	
6,500.0	6,494.6	6,546.0	6,494.6	14.4	20.4	-88.23	10.6	-823.4	660.1	631.0	29.14	22.650	
6,600.0	6,594.6	6,648.1	6,596.5	14.6	20.5	-88.55	6.9	-823.4	660.0	630.5	29.55	22.337	
6,700.0	6,694.6	6,748.2	6,695.1	14.8	20.7	-90.03	-10.2	-823.3	659.7	629.8	29.93	22.040	
6,708.8	6,703.4	6,756.8	6,703.4	14.8	20.7	-90.21	-12.3	-823.3	659.7	629.8	29.97	22.015	
6,799.2	6,793.8	6,841.2	6,783.7	15.0	20.8	-92.46	-38.2	-823.2	660.3	630.0	30.30	21.792	
6,850.0	6,844.5	6,886.3	6,825.1	15.1	20.9	86.27	-55.9	-823.2	661.3	630.9	30.48	21.695	
6,900.0	6,894.2	6,929.8	6,864.0	15.2	21.0	84.84	-75.3	-823.1	662.8	632.1	30.66	21.616	
6,950.0	6,943.5	6,972.4	6,900.9	15.3	21.0	83.43	-96.7	-823.0	664.7	633.8	30.84	21.549	
7,000.0	6,992.0	7,014.4	6,935.9	15.4	21.1	82.06	-119.8	-822.9	666.9	635.8	31.03	21.493	
7,050.0	7,039.5	7,055.7	6,969.0	15.5	21.2	80.74	-144.5	-822.8	669.4	638.2	31.22	21.445	
7,100.0	7,085.8	7,100.0	7,002.9	15.6	21.3	79.37	-173.2	-822.7	672.2	640.8	31.42	21.397	
7,150.0	7,130.7	7,136.4	7,029.3	15.7	21.4	78.23	-198.2	-822.6	675.2	643.6	31.61	21.359	
7,200.0	7,174.0	7,176.1	7,056.6	15.8	21.5	77.06	-227.0	-822.5	678.3	646.5	31.83	21.313	
7,250.0	7,215.4	7,215.2	7,082.0	16.0	21.7	75.94	-256.8	-822.4	681.6	649.5	32.06	21.260	
7,300.0	7,254.8	7,250.0	7,103.1	16.1	21.8	74.96	-284.4	-822.3	684.9	652.6	32.30	21.203	
7,350.0	7,291.9	7,292.4	7,127.0	16.3	22.0	73.89	-319.4	-822.2	688.2	655.6	32.61	21.104	
7,400.0	7,326.6	7,330.4	7,146.6	16.5	22.1	72.97	-352.0	-822.1	691.4	658.5	32.95	20.986	
7,450.0	7,358.6	7,368.2	7,164.4	16.8	22.3	72.12	-385.3	-821.9	694.6	661.2	33.34	20.836	
7,500.0	7,388.0	7,400.0	7,178.0	17.1	22.5	71.41	-414.0	-821.8	697.6	663.9	33.76	20.667	
7,550.0	7,414.4	7,442.9	7,194.3	17.4	22.8	70.62	-453.7	-821.7	700.4	666.1	34.31	20.415	
7,600.0	7,437.9	7,479.9	7,206.4	17.8	23.0	69.99	-488.7	-821.5	703.0	668.1	34.92	20.135	
7,650.0	7,458.1	7,516.8	7,216.6	18.2	23.3	69.43	-524.1	-821.4	705.4	669.8	35.61	19.812	
7,700.0	7,475.2	7,550.0	7,224.3	18.7	23.5	68.97	-556.4	-821.3	707.5	671.2	36.35	19.462	
7,750.0	7,488.9	7,590.1	7,231.5	19.2	23.9	68.54	-595.8	-821.1	709.3	672.1	37.26	19.038	
7,800.0	7,499.3	7,626.6	7,236.2	19.7	24.2	68.21	-632.0	-821.0	710.8	672.6	38.22	18.596	
7,850.0	7,506.2	7,662.9	7,239.0	20.3	24.5	67.96	-668.3	-820.9	711.9	672.7	39.28	18.127	
7,900.0	7,509.6	7,700.2	7,240.0	20.9	24.9	67.78	-705.6	-820.7	712.7	672.3	40.42	17.633	
7,924.2	7,510.0	7,723.1	7,240.0	21.2	25.1	67.74	-728.5	-820.7	712.9	671.8	41.07	17.357	
7,925.0	7,510.0	7,723.9	7,240.0	21.2	25.1	67.74	-729.3	-820.6	712.9	671.8	41.09	17.349	
8,000.0	7,510.0	7,798.9	7,240.0	22.1	25.9	67.74	-804.2	-820.4	712.9	670.0	42.89	16.623	
8,100.0	7,510.0	7,898.9	7,240.0	23.5	27.1	67.74	-904.2	-820.0	712.9	667.5	45.43	15.691	
8,200.0	7,510.0	7,998.9	7,240.0	24.9	28.3	67.75	-1,004.2	-819.6	712.9	664.8	48.11	14.817	
8,300.0	7,510.0	8,098.9	7,240.0	26.4	29.7	67.75	-1,104.2	-819.3	712.9	662.0	50.91	14.003	
8,400.0	7,510.0	8,198.9	7,240.0	27.9	31.0	67.75	-1,204.2	-818.9	712.9	659.1	53.80	13.251	
8,500.0	7,510.0	8,298.9	7,240.0	29.5	32.5	67.75	-1,304.2	-818.5	712.9	656.2	56.78	12.557	
8,600.0	7,510.0	8,398.9	7,240.0	31.1	34.0	67.75	-1,404.2	-818.1	712.9	653.1	59.82	11.918	
8,700.0	7,510.0	8,498.9	7,240.0	32.8	35.5	67.75	-1,504.2	-817.8	712.9	650.0	62.92	11.331	

CC - Min centre to center distance or convergent point, SF - min separation factor, ES - min ellipse separation

Company:	Synergy Resources	Local Co-ordinate Reference:	Well SRC Gies D-15-22NCHZ
Project:	SEC.15-T7N-R65W	TVD Reference:	WELL @ 4851.0ft (RKB - 13')
Reference Site:	SRC Gies Pad Sec.15-T7N-R65W	MD Reference:	WELL @ 4851.0ft (RKB - 13')
Site Error:	0.0ft	North Reference:	True
Reference Well:	SRC Gies D-15-22NCHZ	Survey Calculation Method:	Minimum Curvature
Well Error:	0.0ft	Output errors are at	2.00 sigma
Reference Wellbore	Wellbore #1	Database:	Landmark
Reference Design:	Plan #2 (10-01-14)	Offset TVD Reference:	Offset Datum

Offset Design												Offset Site Error:	0.0 ft
SRC Gies Pad Sec.15-T7N-R65W - SRC Gies 34-15-22NHZ - Wellbore #1 - Plan #1 (5-7-14)												Offset Well Error:	0.0 ft
Survey Program: 0-MWD													
Reference		Offset		Semi Major Axis			Distance						
Measured Depth (ft)	Vertical Depth (ft)	Measured Depth (ft)	Vertical Depth (ft)	Reference (ft)	Offset (ft)	Highside Toolface (°)	Offset Wellbore Centre +N/-S (ft)	+E/-W (ft)	Between Centres (ft)	Between Ellipses (ft)	Minimum Separation (ft)	Separation Factor	Warning
8,800.0	7,510.0	8,598.9	7,240.0	34.5	37.1	67.75	-1,604.2	-817.4	713.0	646.9	66.08	10.790	
8,900.0	7,510.0	8,698.9	7,240.0	36.2	38.7	67.75	-1,704.2	-817.0	713.0	643.7	69.27	10.292	
9,000.0	7,510.0	8,798.9	7,240.0	37.9	40.4	67.75	-1,804.2	-816.6	713.0	640.5	72.51	9.833	
9,100.0	7,510.0	8,898.9	7,240.0	39.7	42.0	67.75	-1,904.2	-816.3	713.0	637.2	75.78	9.408	
9,200.0	7,510.0	8,998.9	7,240.0	41.4	43.7	67.75	-2,004.2	-815.9	713.0	633.9	79.08	9.016	
9,300.0	7,510.0	9,098.9	7,240.0	43.2	45.4	67.75	-2,104.2	-815.5	713.0	630.6	82.40	8.652	
9,400.0	7,510.0	9,198.9	7,240.0	45.0	47.1	67.75	-2,204.2	-815.1	713.0	627.2	85.75	8.315	
9,500.0	7,510.0	9,298.9	7,240.0	46.8	48.9	67.75	-2,304.2	-814.8	713.0	623.9	89.12	8.001	
9,600.0	7,510.0	9,398.9	7,240.0	48.6	50.6	67.75	-2,404.2	-814.4	713.0	620.5	92.50	7.708	
9,700.0	7,510.0	9,498.9	7,240.0	50.4	52.4	67.75	-2,504.2	-814.0	713.0	617.1	95.91	7.435	
9,800.0	7,510.0	9,598.9	7,240.0	52.3	54.2	67.75	-2,604.2	-813.7	713.0	613.7	99.32	7.179	
9,900.0	7,510.0	9,698.9	7,240.0	54.1	55.9	67.75	-2,704.2	-813.3	713.0	610.3	102.75	6.939	
10,000.0	7,510.0	9,798.9	7,240.0	55.9	57.7	67.75	-2,804.2	-812.9	713.0	606.8	106.19	6.715	
10,100.0	7,510.0	9,898.9	7,240.0	57.8	59.5	67.75	-2,904.2	-812.5	713.0	603.4	109.64	6.503	
10,200.0	7,510.0	9,998.9	7,240.0	59.6	61.3	67.75	-3,004.2	-812.2	713.1	600.0	113.10	6.304	
10,300.0	7,510.0	10,098.9	7,240.0	61.5	63.2	67.75	-3,104.2	-811.8	713.1	596.5	116.57	6.117	
10,400.0	7,510.0	10,198.9	7,240.0	63.3	65.0	67.75	-3,204.2	-811.4	713.1	593.0	120.05	5.940	
10,500.0	7,510.0	10,298.9	7,240.0	65.2	66.8	67.75	-3,304.2	-811.0	713.1	589.5	123.53	5.772	
10,600.0	7,510.0	10,398.9	7,240.0	67.1	68.6	67.75	-3,404.2	-810.7	713.1	586.1	127.03	5.614	
10,700.0	7,510.0	10,498.9	7,240.0	68.9	70.5	67.75	-3,504.2	-810.3	713.1	582.6	130.52	5.463	
10,800.0	7,510.0	10,598.9	7,240.0	70.8	72.3	67.75	-3,604.2	-809.9	713.1	579.1	134.03	5.321	
10,900.0	7,510.0	10,698.9	7,240.0	72.7	74.2	67.75	-3,704.2	-809.5	713.1	575.6	137.54	5.185	
11,000.0	7,510.0	10,798.9	7,240.0	74.6	76.0	67.75	-3,804.2	-809.2	713.1	572.1	141.05	5.056	
11,100.0	7,510.0	10,898.9	7,240.0	76.4	77.9	67.75	-3,904.2	-808.8	713.1	568.5	144.57	4.933	
11,200.0	7,510.0	10,998.9	7,240.0	78.3	79.7	67.75	-4,004.2	-808.4	713.1	565.0	148.09	4.815	
11,300.0	7,510.0	11,098.9	7,240.0	80.2	81.6	67.75	-4,104.2	-808.1	713.1	561.5	151.62	4.703	
11,400.0	7,510.0	11,198.9	7,240.0	82.1	83.5	67.75	-4,204.2	-807.7	713.1	558.0	155.15	4.597	
11,500.0	7,510.0	11,298.9	7,240.0	84.0	85.3	67.75	-4,304.2	-807.3	713.1	554.5	158.68	4.494	
11,600.0	7,510.0	11,398.9	7,240.0	85.9	87.2	67.75	-4,404.2	-806.9	713.2	550.9	162.22	4.396	
11,700.0	7,510.0	11,498.9	7,240.0	87.8	89.1	67.75	-4,504.2	-806.6	713.2	547.4	165.76	4.302	
11,701.8	7,510.0	11,500.7	7,240.0	87.8	89.1	67.75	-4,506.0	-806.6	713.2	547.3	165.82	4.301	
11,715.1	7,510.0	11,509.0	7,240.0	88.1	89.3	67.75	-4,514.3	-806.5	713.2	547.0	166.20	4.291 SF	

Company:	Synergy Resources	Local Co-ordinate Reference:	Well SRC Gies D-15-22NCHZ
Project:	SEC.15-T7N-R65W	TVD Reference:	WELL @ 4851.0ft (RKB - 13')
Reference Site:	SRC Gies Pad Sec.15-T7N-R65W	MD Reference:	WELL @ 4851.0ft (RKB - 13')
Site Error:	0.0ft	North Reference:	True
Reference Well:	SRC Gies D-15-22NCHZ	Survey Calculation Method:	Minimum Curvature
Well Error:	0.0ft	Output errors are at	2.00 sigma
Reference Wellbore	Wellbore #1	Database:	Landmark
Reference Design:	Plan #2 (10-01-14)	Offset TVD Reference:	Offset Datum

Offset Design													Offset Site Error:	0.0 ft
Survey Program: 0-MWD													Offset Well Error:	0.0 ft
Reference		Offset		Semi Major Axis			Distance							Warning
Measured Depth (ft)	Vertical Depth (ft)	Measured Depth (ft)	Vertical Depth (ft)	Reference (ft)	Offset (ft)	Highside Toolface (°)	Offset Wellbore Centre +N/-S (ft)	+E/-W (ft)	Between Centres (ft)	Between Ellipses (ft)	Minimum Separation (ft)	Separation Factor		
0.0	0.0	0.0	0.0	0.0	0.0	91.56	-1.1	40.0	40.0					
100.0	100.0	100.0	100.0	0.1	0.1	91.56	-1.1	40.0	40.0	39.8	0.22	178.063		
200.0	200.0	200.0	200.0	0.3	0.3	91.56	-1.1	40.0	40.0	39.3	0.67	59.354		
300.0	300.0	300.0	300.0	0.6	0.6	91.56	-1.1	40.0	40.0	38.9	1.12	35.613		
400.0	400.0	400.0	400.0	0.8	0.8	91.56	-1.1	40.0	40.0	38.4	1.57	25.438		
500.0	500.0	500.0	500.0	1.0	1.0	91.56	-1.1	40.0	40.0	38.0	2.02	19.785		
600.0	600.0	600.0	600.0	1.2	1.2	91.56	-1.1	40.0	40.0	37.6	2.47	16.188		
700.0	700.0	700.0	700.0	1.5	1.5	91.56	-1.1	40.0	40.0	37.1	2.92	13.697		
800.0	800.0	800.0	800.0	1.7	1.7	91.56	-1.1	40.0	40.0	36.7	3.37	11.871 CC, ES		
900.0	900.0	898.6	898.6	1.9	1.9	91.71	-1.2	41.7	41.7	37.9	3.80	10.972		
1,000.0	1,000.0	996.9	996.8	2.1	2.1	92.11	-1.7	46.7	46.9	42.7	4.23	11.082		
1,100.0	1,100.0	1,096.1	1,095.7	2.4	2.3	92.57	-2.4	54.4	54.7	50.0	4.67	11.697		
1,200.0	1,200.0	1,195.8	1,195.0	2.6	2.5	92.93	-3.2	62.3	62.6	57.5	5.13	12.213		
1,300.0	1,300.0	1,295.5	1,294.4	2.8	2.8	93.20	-3.9	70.2	70.6	65.0	5.59	12.629		
1,400.0	1,400.0	1,395.2	1,393.8	3.0	3.0	93.42	-4.7	78.1	78.5	72.5	6.05	12.970		
1,500.0	1,500.0	1,494.7	1,493.0	3.2	3.3	-173.09	-5.4	86.0	88.2	81.8	6.39	13.798		
1,594.9	1,594.8	1,588.8	1,586.8	3.4	3.5	-173.25	-6.1	93.5	100.6	93.8	6.78	14.838		
1,600.0	1,599.8	1,593.8	1,591.8	3.4	3.5	-173.27	-6.2	93.9	101.3	94.5	6.80	14.902		
1,700.0	1,699.6	1,692.7	1,690.4	3.7	3.8	-173.52	-6.9	101.7	116.0	108.8	7.22	16.073		
1,800.0	1,799.4	1,791.7	1,789.0	3.9	4.0	-173.71	-7.6	109.5	130.6	123.0	7.64	17.106		
1,900.0	1,899.1	1,890.6	1,887.6	4.1	4.3	-173.86	-8.4	117.4	145.3	137.3	8.06	18.023		
2,000.0	1,998.9	1,989.5	1,986.2	4.3	4.5	-173.99	-9.1	125.2	160.0	151.5	8.49	18.840		
2,100.0	2,098.7	2,088.4	2,084.8	4.6	4.8	-174.10	-9.8	133.1	174.7	165.7	8.92	19.572		
2,200.0	2,198.4	2,187.3	2,183.4	4.8	5.0	-174.18	-10.6	140.9	189.3	180.0	9.36	20.231		
2,300.0	2,298.2	2,286.2	2,282.0	5.0	5.3	-174.26	-11.3	148.7	204.0	194.2	9.79	20.827		
2,400.0	2,398.0	2,385.2	2,380.6	5.3	5.6	-174.33	-12.0	156.6	218.7	208.4	10.23	21.369		
2,500.0	2,497.8	2,484.1	2,479.2	5.5	5.8	-174.38	-12.8	164.4	233.3	222.7	10.67	21.862		
2,600.0	2,597.5	2,583.0	2,577.8	5.7	6.1	-174.43	-13.5	172.2	248.0	236.9	11.12	22.313		
2,700.0	2,697.3	2,681.9	2,676.4	6.0	6.3	-174.48	-14.3	180.1	262.7	251.1	11.56	22.728		
2,800.0	2,797.1	2,780.8	2,775.0	6.2	6.6	-174.52	-15.0	187.9	277.4	265.4	12.00	23.109		
2,900.0	2,896.8	2,879.7	2,873.6	6.5	6.9	-174.56	-15.7	195.8	292.0	279.6	12.45	23.462		
3,000.0	2,996.6	2,978.7	2,972.2	6.7	7.1	-174.59	-16.5	203.6	306.7	293.8	12.89	23.788		
3,100.0	3,096.4	3,077.6	3,070.8	7.0	7.4	-174.62	-17.2	211.4	321.4	308.0	13.34	24.091		
3,200.0	3,196.1	3,176.5	3,169.4	7.2	7.7	-174.65	-17.9	219.3	336.1	322.3	13.79	24.373		
3,300.0	3,295.9	3,275.4	3,268.0	7.5	7.9	-174.67	-18.7	227.1	350.7	336.5	14.24	24.636		
3,400.0	3,395.7	3,374.3	3,366.6	7.7	8.2	-174.69	-19.4	234.9	365.4	350.7	14.69	24.882		
3,500.0	3,495.4	3,473.2	3,465.3	8.0	8.5	-174.72	-20.1	242.8	380.1	364.9	15.14	25.113		
3,600.0	3,595.2	3,572.2	3,563.9	8.2	8.7	-174.73	-20.9	250.6	394.8	379.2	15.59	25.329		
3,700.0	3,695.0	3,671.1	3,662.5	8.5	9.0	-174.75	-21.6	258.5	409.4	393.4	16.04	25.532		
3,800.0	3,794.7	3,770.0	3,761.1	8.7	9.2	-174.77	-22.4	266.3	424.1	407.6	16.49	25.724		
3,810.5	3,805.2	3,780.4	3,771.4	8.7	9.3	-174.77	-22.4	267.1	425.6	409.1	16.53	25.743		
3,900.0	3,894.6	3,884.9	3,875.7	8.9	9.5	-174.80	-23.0	273.5	435.8	418.9	16.94	25.730		
4,005.4	4,000.0	4,009.2	4,000.0	9.1	9.7	91.76	-23.3	276.2	440.0	422.6	17.38	25.314		
4,100.0	4,094.6	4,103.8	4,094.6	9.3	9.9	91.76	-23.3	276.2	440.0	422.3	17.76	24.777		
4,200.0	4,194.6	4,203.8	4,194.6	9.5	10.1	91.76	-23.3	276.2	440.0	421.8	18.17	24.214		
4,300.0	4,294.6	4,303.8	4,294.6	9.7	10.3	91.76	-23.3	276.2	440.0	421.4	18.59	23.675		
4,400.0	4,394.6	4,403.8	4,394.6	9.9	10.4	91.76	-23.3	276.2	440.0	421.0	19.00	23.157		
4,500.0	4,494.6	4,503.8	4,494.6	10.1	10.6	91.76	-23.3	276.2	440.0	420.6	19.42	22.659		
4,600.0	4,594.6	4,603.8	4,594.6	10.3	10.8	91.76	-23.3	276.2	440.0	420.2	19.84	22.181		
4,700.0	4,694.6	4,703.8	4,694.6	10.5	11.0	91.76	-23.3	276.2	440.0	419.8	20.26	21.721		
4,800.0	4,794.6	4,803.8	4,794.6	10.8	11.2	91.76	-23.3	276.2	440.0	419.3	20.68	21.278		
4,900.0	4,894.6	4,903.8	4,894.6	11.0	11.4	91.76	-23.3	276.2	440.0	418.9	21.10	20.852		

CC - Min centre to center distance or convergent point, SF - min separation factor, ES - min ellipse separation

Company:	Synergy Resources	Local Co-ordinate Reference:	Well SRC Gies D-15-22NCHZ
Project:	SEC.15-T7N-R65W	TVD Reference:	WELL @ 4851.0ft (RKB - 13')
Reference Site:	SRC Gies Pad Sec.15-T7N-R65W	MD Reference:	WELL @ 4851.0ft (RKB - 13')
Site Error:	0.0ft	North Reference:	True
Reference Well:	SRC Gies D-15-22NCHZ	Survey Calculation Method:	Minimum Curvature
Well Error:	0.0ft	Output errors are at	2.00 sigma
Reference Wellbore	Wellbore #1	Database:	Landmark
Reference Design:	Plan #2 (10-01-14)	Offset TVD Reference:	Offset Datum

Offset Design												Offset Site Error:	0.0 ft
Survey Program: 0-MWD												Offset Well Error:	0.0 ft
Reference		Offset		Semi Major Axis			Distance						
Measured Depth (ft)	Vertical Depth (ft)	Measured Depth (ft)	Vertical Depth (ft)	Reference (ft)	Offset (ft)	Highside Toolface (°)	Offset Wellbore Centre +N/-S (ft)	+E/-W (ft)	Between Centres (ft)	Between Ellipses (ft)	Minimum Separation (ft)	Separation Factor	Warning
5,000.0	4,994.6	5,003.8	4,994.6	11.2	11.6	91.76	-23.3	276.2	440.0	418.5	21.53	20.442	
5,100.0	5,094.6	5,103.8	5,094.6	11.4	11.8	91.76	-23.3	276.2	440.0	418.1	21.95	20.046	
5,200.0	5,194.6	5,203.8	5,194.6	11.6	12.0	91.76	-23.3	276.2	440.0	417.6	22.38	19.665	
5,300.0	5,294.6	5,303.8	5,294.6	11.8	12.2	91.76	-23.3	276.2	440.0	417.2	22.80	19.297	
5,400.0	5,394.6	5,403.8	5,394.6	12.0	12.4	91.76	-23.3	276.2	440.0	416.8	23.23	18.942	
5,500.0	5,494.6	5,503.8	5,494.6	12.2	12.6	91.76	-23.3	276.2	440.0	416.4	23.66	18.600	
5,600.0	5,594.6	5,603.8	5,594.6	12.4	12.8	91.76	-23.3	276.2	440.0	415.9	24.09	18.268	
5,700.0	5,694.6	5,703.8	5,694.6	12.6	13.0	91.76	-23.3	276.2	440.0	415.5	24.52	17.948	
5,800.0	5,794.6	5,803.8	5,794.6	12.9	13.2	91.76	-23.3	276.2	440.0	415.1	24.95	17.639	
5,900.0	5,894.6	5,903.8	5,894.6	13.1	13.4	91.76	-23.3	276.2	440.0	414.6	25.38	17.339	
6,000.0	5,994.6	6,003.8	5,994.6	13.3	13.6	91.76	-23.3	276.2	440.0	414.2	25.81	17.049	
6,100.0	6,094.6	6,103.8	6,094.6	13.5	13.8	91.76	-23.3	276.2	440.0	413.8	26.24	16.768	
6,200.0	6,194.6	6,203.8	6,194.6	13.7	14.0	91.76	-23.3	276.2	440.0	413.3	26.67	16.496	
6,300.0	6,294.6	6,303.8	6,294.6	13.9	14.2	91.76	-23.3	276.2	440.0	412.9	27.11	16.232	
6,400.0	6,394.6	6,403.8	6,394.6	14.1	14.5	91.76	-23.3	276.2	440.0	412.5	27.54	15.977	
6,500.0	6,494.6	6,503.8	6,494.6	14.4	14.7	91.76	-23.3	276.2	440.0	412.0	27.98	15.728	
6,600.0	6,594.6	6,603.8	6,594.6	14.6	14.9	91.76	-23.3	276.2	440.0	411.6	28.41	15.488	
6,700.0	6,694.6	6,703.8	6,694.6	14.8	15.1	91.76	-23.3	276.2	440.0	411.2	28.85	15.254	
6,799.2	6,793.8	6,803.0	6,793.8	15.0	15.3	91.76	-23.3	276.2	440.0	410.7	29.28	15.029	
6,850.0	6,844.5	6,852.7	6,843.5	15.1	15.4	-88.03	-25.0	276.2	440.0	410.5	29.48	14.925	
6,900.0	6,894.2	6,901.7	6,892.2	15.2	15.5	-88.04	-30.1	276.2	440.0	410.3	29.66	14.833	
6,950.0	6,943.5	6,950.7	6,940.4	15.3	15.6	-88.07	-38.5	276.3	440.0	410.2	29.85	14.740	
7,000.0	6,992.0	7,000.0	6,988.3	15.4	15.7	-88.10	-50.2	276.3	440.0	410.0	30.04	14.646	
7,050.0	7,039.5	7,048.7	7,034.7	15.5	15.8	-88.14	-65.0	276.4	440.0	409.7	30.24	14.548	
7,100.0	7,085.8	7,097.7	7,080.3	15.6	15.9	-88.19	-83.1	276.4	440.0	409.5	30.46	14.444	
7,150.0	7,130.7	7,146.8	7,124.5	15.7	16.0	-88.25	-104.2	276.5	440.0	409.3	30.70	14.330	
7,200.0	7,174.0	7,195.9	7,167.3	15.8	16.1	-88.32	-128.4	276.6	439.9	409.0	30.97	14.204	
7,250.0	7,215.4	7,245.0	7,208.3	16.0	16.3	-88.40	-155.4	276.7	439.9	408.6	31.28	14.062	
7,300.0	7,254.8	7,294.2	7,247.4	16.1	16.5	-88.48	-185.2	276.8	439.9	408.3	31.64	13.902	
7,350.0	7,291.9	7,343.4	7,284.3	16.3	16.6	-88.57	-217.7	277.0	439.9	407.8	32.06	13.722	
7,400.0	7,326.6	7,392.7	7,319.1	16.5	16.9	-88.67	-252.6	277.1	439.9	407.3	32.53	13.521	
7,450.0	7,358.6	7,442.0	7,351.3	16.8	17.1	-88.77	-289.9	277.2	439.9	406.8	33.08	13.297	
7,500.0	7,388.0	7,491.3	7,381.0	17.1	17.4	-88.88	-329.4	277.4	439.8	406.1	33.70	13.052	
7,550.0	7,414.4	7,540.8	7,407.8	17.4	17.7	-89.00	-370.8	277.5	439.8	405.4	34.40	12.787	
7,600.0	7,437.9	7,590.3	7,431.8	17.8	18.1	-89.12	-414.1	277.7	439.8	404.6	35.18	12.503	
7,650.0	7,458.1	7,639.8	7,452.8	18.2	18.5	-89.24	-459.0	277.9	439.8	403.8	36.03	12.205	
7,700.0	7,475.2	7,689.4	7,470.6	18.7	19.0	-89.37	-505.3	278.1	439.8	402.8	36.97	11.896	
7,750.0	7,488.9	7,739.1	7,485.2	19.2	19.4	-89.50	-552.8	278.2	439.8	401.8	37.98	11.579	
7,800.0	7,499.3	7,788.9	7,496.5	19.7	20.0	-89.64	-601.2	278.4	439.8	400.7	39.06	11.259	
7,850.0	7,506.2	7,838.7	7,504.4	20.3	20.5	-89.77	-650.4	278.6	439.8	399.6	40.20	10.939	
7,900.0	7,509.6	7,888.6	7,508.9	20.9	21.1	-89.91	-700.1	278.8	439.8	398.4	41.40	10.622	
7,916.7	7,510.0	7,905.3	7,509.6	21.1	21.3	-89.96	-716.8	278.9	439.8	398.0	41.81	10.518	
7,924.2	7,510.0	7,912.8	7,509.8	21.2	21.4	-89.98	-724.3	278.9	439.8	397.8	42.00	10.471	
7,925.0	7,510.0	7,913.7	7,509.9	21.2	21.4	-89.98	-725.1	278.9	439.8	397.7	42.02	10.466	
8,000.0	7,510.0	7,988.6	7,510.0	22.1	22.4	-90.00	-800.1	279.2	439.8	395.8	43.94	10.008	
8,100.0	7,510.0	8,088.6	7,510.0	23.5	23.7	-90.00	-900.1	279.6	439.8	393.1	46.66	9.425	
8,200.0	7,510.0	8,188.6	7,510.0	24.9	25.1	-90.00	-1,000.1	279.9	439.8	390.2	49.53	8.879	
8,300.0	7,510.0	8,288.6	7,510.0	26.4	26.6	-90.00	-1,100.1	280.3	439.8	387.2	52.52	8.373	
8,400.0	7,510.0	8,388.6	7,510.0	27.9	28.1	-90.00	-1,200.1	280.7	439.8	384.1	55.62	7.906	
8,500.0	7,510.0	8,488.6	7,510.0	29.5	29.7	-90.00	-1,300.1	281.1	439.8	381.0	58.81	7.478	
8,600.0	7,510.0	8,588.6	7,510.0	31.1	31.3	-90.00	-1,400.1	281.5	439.8	377.7	62.07	7.085	
8,700.0	7,510.0	8,688.6	7,510.0	32.8	33.0	-90.00	-1,500.1	281.9	439.8	374.4	65.40	6.724	

CC - Min centre to center distance or convergent point, SF - min separation factor, ES - min ellipse separation

Company:	Synergy Resources	Local Co-ordinate Reference:	Well SRC Gies D-15-22NCHZ
Project:	SEC.15-T7N-R65W	TVD Reference:	WELL @ 4851.0ft (RKB - 13')
Reference Site:	SRC Gies Pad Sec.15-T7N-R65W	MD Reference:	WELL @ 4851.0ft (RKB - 13')
Site Error:	0.0ft	North Reference:	True
Reference Well:	SRC Gies D-15-22NCHZ	Survey Calculation Method:	Minimum Curvature
Well Error:	0.0ft	Output errors are at	2.00 sigma
Reference Wellbore	Wellbore #1	Database:	Landmark
Reference Design:	Plan #2 (10-01-14)	Offset TVD Reference:	Offset Datum

Offset Design												Offset Site Error:	0.0 ft
SRC Gies Pad Sec.15-T7N-R65W - SRC Gies 44-15-22CHZ - Wellbore #1 - Plan #1 (5-7-14)												Offset Well Error:	0.0 ft
Survey Program: 0-MWD													
Reference		Offset		Semi Major Axis			Distance						
Measured Depth (ft)	Vertical Depth (ft)	Measured Depth (ft)	Vertical Depth (ft)	Reference (ft)	Offset (ft)	Highside Toolface (°)	Offset Wellbore Centre +N/-S (ft)	+E/-W (ft)	Between Centres (ft)	Between Ellipses (ft)	Minimum Separation (ft)	Separation Factor	Warning
8,800.0	7,510.0	8,788.6	7,510.0	34.5	34.6	-90.00	-1,600.1	282.2	439.8	371.0	68.78	6.394	
8,900.0	7,510.0	8,888.6	7,510.0	36.2	36.3	-90.00	-1,700.1	282.6	439.8	367.6	72.21	6.090	
9,000.0	7,510.0	8,988.6	7,510.0	37.9	38.1	-90.00	-1,800.1	283.0	439.8	364.1	75.68	5.811	
9,100.0	7,510.0	9,088.6	7,510.0	39.7	39.8	-90.00	-1,900.1	283.4	439.8	360.6	79.18	5.554	
9,200.0	7,510.0	9,188.6	7,510.0	41.4	41.6	-90.00	-2,000.1	283.8	439.8	357.1	82.72	5.317	
9,300.0	7,510.0	9,288.6	7,510.0	43.2	43.3	-90.00	-2,100.1	284.1	439.8	353.5	86.28	5.097	
9,400.0	7,510.0	9,388.6	7,510.0	45.0	45.1	-90.00	-2,200.1	284.5	439.8	349.9	89.87	4.894	
9,500.0	7,510.0	9,488.6	7,510.0	46.8	46.9	-90.00	-2,300.1	284.9	439.8	346.3	93.47	4.705	
9,600.0	7,510.0	9,588.6	7,510.0	48.6	48.7	-90.00	-2,400.1	285.3	439.8	342.7	97.10	4.529	
9,700.0	7,510.0	9,688.6	7,510.0	50.4	50.5	-90.00	-2,500.1	285.7	439.8	339.1	100.74	4.366	
9,800.0	7,510.0	9,788.6	7,510.0	52.3	52.4	-90.00	-2,600.1	286.1	439.8	335.4	104.40	4.213	
9,900.0	7,510.0	9,888.6	7,510.0	54.1	54.2	-90.00	-2,700.1	286.4	439.8	331.7	108.07	4.070	
10,000.0	7,510.0	9,988.6	7,510.0	55.9	56.0	-90.00	-2,800.1	286.8	439.8	328.0	111.75	3.935	
10,100.0	7,510.0	10,088.6	7,510.0	57.8	57.9	-90.00	-2,900.1	287.2	439.8	324.4	115.44	3.810	
10,200.0	7,510.0	10,188.6	7,510.0	59.6	59.7	-90.00	-3,000.1	287.6	439.8	320.7	119.15	3.691	
10,300.0	7,510.0	10,288.6	7,510.0	61.5	61.6	-90.00	-3,100.1	288.0	439.8	316.9	122.86	3.580	
10,400.0	7,510.0	10,388.6	7,510.0	63.3	63.4	-90.00	-3,200.1	288.4	439.8	313.2	126.58	3.474	
10,500.0	7,510.0	10,488.6	7,510.0	65.2	65.3	-90.00	-3,300.1	288.7	439.8	309.5	130.31	3.375	
10,600.0	7,510.0	10,588.6	7,510.0	67.1	67.2	-90.00	-3,400.1	289.1	439.8	305.8	134.04	3.281	
10,700.0	7,510.0	10,688.6	7,510.0	68.9	69.0	-90.00	-3,500.1	289.5	439.8	302.0	137.79	3.192	
10,800.0	7,510.0	10,788.6	7,510.0	70.8	70.9	-90.00	-3,600.1	289.9	439.8	298.3	141.53	3.107	
10,900.0	7,510.0	10,888.6	7,510.0	72.7	72.8	-90.00	-3,700.1	290.3	439.8	294.5	145.29	3.027	
11,000.0	7,510.0	10,988.6	7,510.0	74.6	74.6	-90.00	-3,800.1	290.7	439.8	290.8	149.04	2.951	
11,100.0	7,510.0	11,088.6	7,510.0	76.4	76.5	-90.00	-3,900.1	291.0	439.8	287.0	152.81	2.878	
11,200.0	7,510.0	11,188.6	7,510.0	78.3	78.4	-90.00	-4,000.1	291.4	439.8	283.2	156.57	2.809	
11,300.0	7,510.0	11,288.6	7,510.0	80.2	80.3	-90.00	-4,100.1	291.8	439.8	279.5	160.34	2.743	
11,400.0	7,510.0	11,388.6	7,510.0	82.1	82.2	-90.00	-4,200.1	292.2	439.8	275.7	164.12	2.680	
11,500.0	7,510.0	11,488.6	7,510.0	84.0	84.1	-90.00	-4,300.1	292.6	439.8	271.9	167.89	2.620	
11,600.0	7,510.0	11,588.6	7,510.0	85.9	85.9	-90.00	-4,400.1	292.9	439.8	268.1	171.68	2.562	
11,700.0	7,510.0	11,688.6	7,510.0	87.8	87.8	-90.00	-4,500.1	293.3	439.8	264.4	175.46	2.507	
11,715.1	7,510.0	11,703.7	7,510.0	88.1	88.1	-90.00	-4,515.2	293.4	439.8	263.8	176.03	2.499 SF	

Company:	Synergy Resources	Local Co-ordinate Reference:	Well SRC Gies D-15-22NCHZ
Project:	SEC.15-T7N-R65W	TVD Reference:	WELL @ 4851.0ft (RKB - 13')
Reference Site:	SRC Gies Pad Sec.15-T7N-R65W	MD Reference:	WELL @ 4851.0ft (RKB - 13')
Site Error:	0.0ft	North Reference:	True
Reference Well:	SRC Gies D-15-22NCHZ	Survey Calculation Method:	Minimum Curvature
Well Error:	0.0ft	Output errors are at	2.00 sigma
Reference Wellbore	Wellbore #1	Database:	Landmark
Reference Design:	Plan #2 (10-01-14)	Offset TVD Reference:	Offset Datum

Offset Design													Offset Site Error:	0.0ft
Survey Program: 0-MWD													Offset Well Error:	0.0ft
Reference		Offset		Semi Major Axis			Distance							Warning
Measured Depth (ft)	Vertical Depth (ft)	Measured Depth (ft)	Vertical Depth (ft)	Reference (ft)	Offset (ft)	Highside Toolface (°)	Offset Wellbore Centre +N/-S (ft)	+E/-W (ft)	Between Centres (ft)	Between Ellipses (ft)	Minimum Separation (ft)	Separation Factor		
0.0	0.0	0.0	0.0	0.0	0.0	91.40	-1.5	59.7	59.8					
100.0	100.0	100.0	100.0	0.1	0.1	91.40	-1.5	59.7	59.8	59.5	0.22	265.839		
200.0	200.0	200.0	200.0	0.3	0.3	91.40	-1.5	59.7	59.8	59.1	0.67	88.613		
300.0	300.0	300.0	300.0	0.6	0.6	91.40	-1.5	59.7	59.8	58.6	1.12	53.168		
400.0	400.0	400.0	400.0	0.8	0.8	91.40	-1.5	59.7	59.8	58.2	1.57	37.977		
500.0	500.0	500.0	500.0	1.0	1.0	91.40	-1.5	59.7	59.8	57.7	2.02	29.538		
600.0	600.0	600.0	600.0	1.2	1.2	91.40	-1.5	59.7	59.8	57.3	2.47	24.167 CC, ES		
700.0	700.0	697.9	697.9	1.5	1.4	91.46	-1.6	61.4	61.5	58.6	2.90	21.161		
800.0	800.0	795.6	795.5	1.7	1.6	91.64	-1.9	66.4	66.6	63.2	3.33	19.976		
900.0	900.0	892.9	892.3	1.9	1.9	91.87	-2.4	74.7	75.1	71.3	3.78	19.869		
1,000.0	1,000.0	992.0	990.9	2.1	2.1	92.11	-3.1	85.1	85.7	81.4	4.25	20.166		
1,100.0	1,100.0	1,091.4	1,089.8	2.4	2.4	92.29	-3.8	95.7	96.3	91.6	4.73	20.349		
1,200.0	1,200.0	1,190.8	1,188.6	2.6	2.6	92.44	-4.5	106.2	106.9	101.7	5.22	20.465		
1,300.0	1,300.0	1,290.3	1,287.5	2.8	2.9	92.56	-5.2	116.8	117.5	111.8	5.72	20.537		
1,400.0	1,400.0	1,389.7	1,386.4	3.0	3.2	92.66	-5.9	127.3	128.2	121.9	6.23	20.582		
1,500.0	1,500.0	1,488.9	1,485.1	3.2	3.5	-173.88	-6.6	137.8	140.5	134.1	6.41	21.906		
1,594.9	1,594.8	1,582.7	1,578.3	3.4	3.7	-173.97	-7.3	147.7	155.4	148.6	6.81	22.834		
1,600.0	1,599.8	1,587.7	1,583.2	3.4	3.8	-173.98	-7.3	148.3	156.3	149.5	6.83	22.891		
1,700.0	1,699.6	1,686.2	1,681.2	3.7	4.0	-174.14	-8.0	158.7	173.6	166.3	7.25	23.945		
1,800.0	1,799.4	1,784.7	1,779.1	3.9	4.3	-174.27	-8.7	169.2	190.9	183.2	7.68	24.867		
1,900.0	1,899.1	1,883.1	1,877.0	4.1	4.6	-174.38	-9.4	179.6	208.2	200.1	8.11	25.681		
2,000.0	1,998.9	1,981.6	1,975.0	4.3	4.9	-174.47	-10.1	190.0	225.6	217.0	8.54	26.402		
2,100.0	2,098.7	2,080.1	2,072.9	4.6	5.2	-174.55	-10.7	200.5	242.9	233.9	8.98	27.046		
2,200.0	2,198.4	2,178.6	2,170.8	4.8	5.5	-174.62	-11.4	210.9	260.2	250.8	9.42	27.623		
2,300.0	2,298.2	2,277.1	2,268.8	5.0	5.8	-174.68	-12.1	221.4	277.5	267.7	9.86	28.144		
2,400.0	2,398.0	2,375.6	2,366.7	5.3	6.1	-174.74	-12.8	231.8	294.9	284.6	10.30	28.614		
2,500.0	2,497.8	2,474.1	2,464.6	5.5	6.4	-174.78	-13.5	242.2	312.2	301.4	10.75	29.042		
2,600.0	2,597.5	2,572.6	2,562.5	5.7	6.7	-174.83	-14.2	252.7	329.5	318.3	11.20	29.432		
2,700.0	2,697.3	2,671.0	2,660.5	6.0	6.9	-174.86	-14.9	263.1	346.8	335.2	11.64	29.790		
2,800.0	2,797.1	2,769.5	2,758.4	6.2	7.2	-174.90	-15.6	273.5	364.2	352.1	12.09	30.118		
2,900.0	2,896.8	2,868.0	2,856.3	6.5	7.5	-174.93	-16.3	284.0	381.5	368.9	12.54	30.420		
3,000.0	2,996.6	2,966.5	2,954.3	6.7	7.8	-174.96	-16.9	294.4	398.8	385.8	12.99	30.699		
3,100.0	3,096.4	3,065.0	3,052.2	7.0	8.1	-174.98	-17.6	304.9	416.1	402.7	13.44	30.958		
3,200.0	3,196.1	3,163.5	3,150.1	7.2	8.4	-175.01	-18.3	315.3	433.5	419.6	13.89	31.199		
3,300.0	3,295.9	3,262.0	3,248.1	7.5	8.7	-175.03	-19.0	325.7	450.8	436.4	14.35	31.422		
3,400.0	3,395.7	3,360.5	3,346.0	7.7	9.0	-175.05	-19.7	336.2	468.1	453.3	14.80	31.631		
3,500.0	3,495.4	3,458.9	3,443.9	8.0	9.3	-175.07	-20.4	346.6	485.4	470.2	15.25	31.827		
3,600.0	3,595.2	3,557.4	3,541.8	8.2	9.6	-175.09	-21.1	357.1	502.8	487.1	15.71	32.010		
3,700.0	3,695.0	3,655.9	3,639.8	8.5	9.9	-175.11	-21.8	367.5	520.1	503.9	16.16	32.182		
3,800.0	3,794.7	3,754.4	3,737.7	8.7	10.2	-175.12	-22.5	377.9	537.4	520.8	16.62	32.344		
3,810.5	3,805.2	3,764.7	3,748.0	8.7	10.2	-175.12	-22.5	379.0	539.2	522.6	16.66	32.360		
3,900.0	3,894.6	3,853.1	3,835.9	8.9	10.5	-175.15	-23.1	388.4	553.4	536.3	17.09	32.385		
4,005.4	4,000.0	3,957.7	3,939.9	9.1	10.8	91.43	-23.9	399.5	566.5	548.9	17.55	32.272		
4,100.0	4,094.6	4,051.8	4,033.4	9.3	11.1	91.47	-24.5	409.5	576.5	558.5	17.96	32.093		
4,200.0	4,194.6	4,151.2	4,132.3	9.5	11.4	91.51	-25.2	420.0	587.1	568.7	18.41	31.895		
4,300.0	4,294.6	4,250.6	4,231.1	9.7	11.7	91.55	-25.9	430.5	597.7	578.9	18.85	31.705		
4,400.0	4,394.6	4,350.1	4,330.0	9.9	12.0	91.59	-26.6	441.1	608.3	589.1	19.30	31.523		
4,500.0	4,494.6	4,449.5	4,428.9	10.1	12.3	91.63	-27.3	451.6	619.0	599.2	19.75	31.348		
4,600.0	4,594.6	4,548.9	4,527.7	10.3	12.6	91.67	-28.0	462.2	629.6	609.4	20.19	31.180		
4,700.0	4,694.6	4,648.4	4,626.6	10.5	12.9	91.70	-28.7	472.7	640.2	619.6	20.64	31.018		
4,800.0	4,794.6	4,756.6	4,734.3	10.8	13.2	91.74	-29.4	483.9	650.6	629.5	21.10	30.838		
4,900.0	4,894.6	4,885.9	4,863.2	11.0	13.4	91.77	-30.0	493.0	657.6	636.1	21.55	30.511		

CC - Min centre to center distance or convergent point, SF - min separation factor, ES - min ellipse separation

Company:	Synergy Resources	Local Co-ordinate Reference:	Well SRC Gies D-15-22NCHZ
Project:	SEC.15-T7N-R65W	TVD Reference:	WELL @ 4851.0ft (RKB - 13')
Reference Site:	SRC Gies Pad Sec.15-T7N-R65W	MD Reference:	WELL @ 4851.0ft (RKB - 13')
Site Error:	0.0ft	North Reference:	True
Reference Well:	SRC Gies D-15-22NCHZ	Survey Calculation Method:	Minimum Curvature
Well Error:	0.0ft	Output errors are at	2.00 sigma
Reference Wellbore	Wellbore #1	Database:	Landmark
Reference Design:	Plan #2 (10-01-14)	Offset TVD Reference:	Offset Datum

Offset Design													Offset Site Error:	0.0 ft
Survey Program: 0-MWD													Offset Well Error:	0.0 ft
Reference		Offset		Semi Major Axis			Distance							Warning
Measured Depth (ft)	Vertical Depth (ft)	Measured Depth (ft)	Vertical Depth (ft)	Reference (ft)	Offset (ft)	Highside Toolface (°)	Offset Wellbore Centre +N/-S (ft)	+E/-W (ft)	Between Centres (ft)	Between Ellipses (ft)	Minimum Separation (ft)	Separation Factor		
5,000.0	4,994.6	5,015.7	4,992.9	11.2	13.7	91.78	-30.3	496.2	660.1	638.1	22.00	30.013		
5,100.0	5,094.6	5,117.3	5,094.6	11.4	13.8	91.78	-30.3	496.2	660.2	637.7	22.40	29.464		
5,200.0	5,194.6	5,217.3	5,194.6	11.6	14.0	91.78	-30.3	496.2	660.2	637.3	22.82	28.934		
5,300.0	5,294.6	5,317.3	5,294.6	11.8	14.2	91.78	-30.3	496.2	660.2	636.9	23.23	28.422		
5,400.0	5,394.6	5,417.3	5,394.6	12.0	14.3	91.78	-30.3	496.2	660.2	636.5	23.64	27.925		
5,500.0	5,494.6	5,517.3	5,494.6	12.2	14.5	91.78	-30.3	496.2	660.2	636.1	24.05	27.444		
5,600.0	5,594.6	5,617.3	5,594.6	12.4	14.7	91.78	-30.3	496.2	660.2	635.7	24.47	26.978		
5,700.0	5,694.6	5,717.3	5,694.6	12.6	14.8	91.78	-30.3	496.2	660.2	635.3	24.89	26.526		
5,800.0	5,794.6	5,817.3	5,794.6	12.9	15.0	91.78	-30.3	496.2	660.2	634.8	25.30	26.088		
5,900.0	5,894.6	5,917.3	5,894.6	13.1	15.2	91.78	-30.3	496.2	660.2	634.4	25.72	25.663		
6,000.0	5,994.6	6,017.3	5,994.6	13.3	15.4	91.78	-30.3	496.2	660.2	634.0	26.14	25.251		
6,100.0	6,094.6	6,117.3	6,094.6	13.5	15.6	91.78	-30.3	496.2	660.2	633.6	26.56	24.851		
6,200.0	6,194.6	6,217.3	6,194.6	13.7	15.7	91.78	-30.3	496.2	660.2	633.2	26.99	24.462		
6,300.0	6,294.6	6,317.3	6,294.6	13.9	15.9	91.78	-30.3	496.2	660.2	632.7	27.41	24.085		
6,400.0	6,394.6	6,417.3	6,394.6	14.1	16.1	91.78	-30.3	496.2	660.2	632.3	27.83	23.719		
6,500.0	6,494.6	6,517.3	6,494.6	14.4	16.3	91.78	-30.3	496.2	660.2	631.9	28.26	23.362		
6,500.8	6,495.4	6,518.1	6,495.4	14.4	16.3	91.78	-30.3	496.2	660.2	631.9	28.26	23.360		
6,600.0	6,594.6	6,614.9	6,592.1	14.6	16.5	92.06	-33.5	496.2	660.3	631.6	28.67	23.034		
6,700.0	6,694.6	6,709.1	6,685.0	14.8	16.6	93.37	-48.6	496.3	661.1	632.1	29.06	22.748		
6,799.2	6,793.8	6,797.3	6,769.5	15.0	16.8	95.53	-73.7	496.4	663.5	634.1	29.45	22.532		
6,850.0	6,844.5	6,840.4	6,809.5	15.1	16.9	-82.84	-89.7	496.5	665.6	635.9	29.64	22.455		
6,900.0	6,894.2	6,882.0	6,847.1	15.2	17.0	-81.49	-107.4	496.5	667.9	638.1	29.82	22.397		
6,950.0	6,943.5	6,923.0	6,883.2	15.3	17.1	-80.18	-127.0	496.6	670.6	640.6	30.01	22.347		
7,000.0	6,992.0	6,963.4	6,917.6	15.4	17.2	-78.92	-148.2	496.7	673.5	643.3	30.20	22.304		
7,050.0	7,039.5	7,000.0	6,947.6	15.5	17.3	-77.80	-169.1	496.8	676.6	646.2	30.38	22.272		
7,100.0	7,085.8	7,042.8	6,981.3	15.6	17.5	-76.57	-195.4	496.9	679.7	649.2	30.59	22.223		
7,150.0	7,130.7	7,081.7	7,010.6	15.7	17.6	-75.48	-221.1	497.0	683.0	652.2	30.80	22.176		
7,200.0	7,174.0	7,120.3	7,038.2	15.8	17.8	-74.45	-248.1	497.1	686.3	655.3	31.03	22.120		
7,250.0	7,215.4	7,158.6	7,064.0	16.0	18.0	-73.49	-276.2	497.2	689.6	658.3	31.27	22.051		
7,300.0	7,254.8	7,200.0	7,090.3	16.1	18.2	-72.54	-308.3	497.3	692.8	661.3	31.56	21.954		
7,350.0	7,291.9	7,234.1	7,110.5	16.3	18.4	-71.77	-335.7	497.4	695.9	664.0	31.85	21.846		
7,400.0	7,326.6	7,271.5	7,131.2	16.5	18.6	-71.02	-366.9	497.5	698.8	666.6	32.20	21.701		
7,450.0	7,358.6	7,308.7	7,150.0	16.8	18.8	-70.34	-398.9	497.7	701.6	669.0	32.60	21.523		
7,500.0	7,388.0	7,350.0	7,169.0	17.1	19.2	-69.69	-435.6	497.8	704.1	671.0	33.07	21.291		
7,550.0	7,414.4	7,382.4	7,182.4	17.4	19.4	-69.21	-465.1	497.9	706.4	672.8	33.56	21.047		
7,600.0	7,437.9	7,419.1	7,196.0	17.8	19.7	-68.76	-499.2	498.0	708.3	674.2	34.14	20.747		
7,650.0	7,458.1	7,450.0	7,206.0	18.2	20.0	-68.42	-528.4	498.2	710.0	675.3	34.74	20.436		
7,700.0	7,475.2	7,492.0	7,217.6	18.7	20.4	-68.09	-568.8	498.3	711.3	675.8	35.52	20.026		
7,750.0	7,488.9	7,528.4	7,225.7	19.2	20.8	-67.87	-604.2	498.4	712.3	676.0	36.33	19.609		
7,800.0	7,499.3	7,564.7	7,232.0	19.7	21.2	-67.74	-640.0	498.6	713.0	675.8	37.21	19.162		
7,850.0	7,506.2	7,600.0	7,236.4	20.3	21.6	-67.67	-675.0	498.7	713.2	675.1	38.15	18.697		
7,900.0	7,509.6	7,637.2	7,239.2	20.9	22.0	-67.69	-712.2	498.9	713.2	674.0	39.19	18.199		
7,924.2	7,510.0	7,654.8	7,239.8	21.2	22.2	-67.73	-729.8	498.9	713.0	673.3	39.71	17.957		
7,925.0	7,510.0	7,655.4	7,239.8	21.2	22.2	-67.73	-730.3	498.9	713.0	673.3	39.72	17.949		
7,954.6	7,510.0	7,678.9	7,240.0	21.5	22.5	-67.74	-753.9	499.0	712.9	672.5	40.36	17.664		
8,000.0	7,510.0	7,724.3	7,240.0	22.1	23.1	-67.74	-799.2	499.2	712.9	671.4	41.46	17.193		
8,100.0	7,510.0	7,824.3	7,240.0	23.5	24.4	-67.74	-899.2	499.6	712.9	668.9	44.01	16.197		
8,200.0	7,510.0	7,924.3	7,240.0	24.9	25.7	-67.74	-999.2	500.0	712.9	666.2	46.70	15.265		
8,300.0	7,510.0	8,024.3	7,240.0	26.4	27.2	-67.74	-1,099.2	500.4	712.9	663.4	49.51	14.400		
8,400.0	7,510.0	8,124.3	7,240.0	27.9	28.7	-67.75	-1,199.2	500.7	712.9	660.5	52.41	13.602		
8,500.0	7,510.0	8,224.3	7,240.0	29.5	30.2	-67.75	-1,299.2	501.1	712.9	657.5	55.40	12.869		
8,600.0	7,510.0	8,324.3	7,240.0	31.1	31.8	-67.75	-1,399.2	501.5	712.9	654.5	58.46	12.196		

CC - Min centre to center distance or convergent point, SF - min separation factor, ES - min ellipse separation

Offset Design												Offset Site Error:	
Survey Program: 0-MWD												Offset Well Error:	
Reference		Offset		Semi Major Axis			Distance						Warning
Measured Depth	Vertical Depth	Measured Depth	Vertical Depth	Reference	Offset	Highside Toolface	Offset Wellbore Centre		Between Centres	Between Ellipses	Minimum Separation	Separation Factor	
(ft)	(ft)	(ft)	(ft)	(ft)	(ft)	(°)	+N/-S (ft)	+E/-W (ft)	(ft)	(ft)	(ft)		
8,700.0	7,510.0	8,424.3	7,240.0	32.8	33.5	-67.75	-1,499.2	501.9	712.9	651.4	61.57	11.578	
8,800.0	7,510.0	8,524.3	7,240.0	34.5	35.1	-67.75	-1,599.2	502.3	712.9	648.2	64.74	11.012	
8,900.0	7,510.0	8,624.3	7,240.0	36.2	36.8	-67.75	-1,699.2	502.7	712.9	645.0	67.95	10.491	
9,000.0	7,510.0	8,724.3	7,240.0	37.9	38.5	-67.75	-1,799.2	503.1	712.9	641.7	71.20	10.013	
9,100.0	7,510.0	8,824.3	7,240.0	39.7	40.2	-67.75	-1,899.2	503.4	712.9	638.5	74.49	9.572	
9,200.0	7,510.0	8,924.3	7,240.0	41.4	42.0	-67.75	-1,999.2	503.8	712.9	635.1	77.80	9.164	
9,300.0	7,510.0	9,024.3	7,240.0	43.2	43.8	-67.75	-2,099.2	504.2	713.0	631.8	81.13	8.787	
9,400.0	7,510.0	9,124.3	7,240.0	45.0	45.5	-67.75	-2,199.2	504.6	713.0	628.5	84.49	8.438	
9,500.0	7,510.0	9,224.3	7,240.0	46.8	47.3	-67.75	-2,299.2	505.0	713.0	625.1	87.87	8.114	
9,600.0	7,510.0	9,324.3	7,240.0	48.6	49.1	-67.75	-2,399.2	505.4	713.0	621.7	91.27	7.812	
9,700.0	7,510.0	9,424.3	7,240.0	50.4	50.9	-67.75	-2,499.2	505.8	713.0	618.3	94.68	7.530	
9,800.0	7,510.0	9,524.3	7,240.0	52.3	52.7	-67.75	-2,599.2	506.1	713.0	614.9	98.11	7.267	
9,900.0	7,510.0	9,624.3	7,240.0	54.1	54.5	-67.75	-2,699.2	506.5	713.0	611.4	101.54	7.021	
10,000.0	7,510.0	9,724.3	7,240.0	55.9	56.4	-67.75	-2,799.2	506.9	713.0	608.0	104.99	6.791	
10,100.0	7,510.0	9,824.3	7,240.0	57.8	58.2	-67.75	-2,899.2	507.3	713.0	604.5	108.45	6.574	
10,200.0	7,510.0	9,924.3	7,240.0	59.6	60.0	-67.75	-2,999.2	507.7	713.0	601.1	111.92	6.370	
10,300.0	7,510.0	10,024.3	7,240.0	61.5	61.9	-67.75	-3,099.2	508.1	713.0	597.6	115.40	6.178	
10,400.0	7,510.0	10,124.3	7,240.0	63.3	63.7	-67.75	-3,199.2	508.5	713.0	594.1	118.89	5.997	
10,500.0	7,510.0	10,224.3	7,240.0	65.2	65.6	-67.75	-3,299.2	508.8	713.0	590.6	122.38	5.826	
10,600.0	7,510.0	10,324.3	7,240.0	67.1	67.5	-67.75	-3,399.2	509.2	713.0	587.1	125.88	5.664	
10,700.0	7,510.0	10,424.3	7,240.0	68.9	69.3	-67.75	-3,499.2	509.6	713.0	583.6	129.38	5.511	
10,800.0	7,510.0	10,524.3	7,240.0	70.8	71.2	-67.75	-3,599.2	510.0	713.0	580.1	132.89	5.365	
10,900.0	7,510.0	10,624.3	7,240.0	72.7	73.1	-67.75	-3,699.2	510.4	713.0	576.6	136.41	5.227	
11,000.0	7,510.0	10,724.3	7,240.0	74.6	74.9	-67.75	-3,799.2	510.8	713.0	573.1	139.93	5.096	
11,100.0	7,510.0	10,824.3	7,240.0	76.4	76.8	-67.75	-3,899.2	511.2	713.0	569.6	143.45	4.970	
11,200.0	7,510.0	10,924.3	7,240.0	78.3	78.7	-67.75	-3,999.2	511.5	713.0	566.1	146.98	4.851	
11,300.0	7,510.0	11,024.3	7,240.0	80.2	80.6	-67.75	-4,099.2	511.9	713.0	562.5	150.51	4.737	
11,400.0	7,510.0	11,124.3	7,240.0	82.1	82.4	-67.75	-4,199.2	512.3	713.0	559.0	154.05	4.629	
11,500.0	7,510.0	11,224.3	7,240.0	84.0	84.3	-67.75	-4,299.2	512.7	713.0	555.5	157.59	4.525	
11,600.0	7,510.0	11,324.3	7,240.0	85.9	86.2	-67.75	-4,399.2	513.1	713.1	551.9	161.13	4.425	
11,700.0	7,510.0	11,424.3	7,240.0	87.8	88.1	-67.75	-4,499.2	513.5	713.1	548.4	164.68	4.330	
11,715.1	7,510.0	11,439.4	7,240.0	88.1	88.4	-67.75	-4,514.3	513.5	713.1	547.8	165.21	4.316 SF	

SRC Gies Pad Sec.15-T7N-R65W - SRC Gies D-15-22NHZ - Wellbore #1 - Plan #1 (5-7-14)													Offset Site Error:	0.0 ft
Survey Program: 0-MWD													Offset Well Error:	0.0 ft
Reference		Offset		Semi Major Axis			Distance							
Measured Depth (ft)	Vertical Depth (ft)	Measured Depth (ft)	Vertical Depth (ft)	Reference (ft)	Offset (ft)	Highside Toolface (°)	Offset Wellbore Centre +N/-S (ft)	+E/-W (ft)	Between Centres (ft)	Between Ellipses (ft)	Minimum Separation (ft)	Separation Factor	Warning	
0.0	0.0	0.0	0.0	0.0	0.0	91.05	-0.4	19.7	19.7	19.7	0.00	N/A		
100.0	100.0	100.0	100.0	0.1	0.1	91.05	-0.4	19.7	19.7	19.5	0.22	87.777		
200.0	200.0	200.0	200.0	0.3	0.3	91.05	-0.4	19.7	19.7	19.1	0.67	29.259		
300.0	300.0	300.0	300.0	0.6	0.6	91.05	-0.4	19.7	19.7	18.6	1.12	17.555		
400.0	400.0	400.0	400.0	0.8	0.8	91.05	-0.4	19.7	19.7	18.2	1.57	12.540		
500.0	500.0	500.0	500.0	1.0	1.0	91.05	-0.4	19.7	19.7	17.7	2.02	9.753		
600.0	600.0	600.0	600.0	1.2	1.2	91.05	-0.4	19.7	19.7	17.3	2.47	7.980		
700.0	700.0	700.0	700.0	1.5	1.5	91.05	-0.4	19.7	19.7	16.8	2.92	6.752		
800.0	800.0	800.0	800.0	1.7	1.7	91.05	-0.4	19.7	19.7	16.4	3.37	5.852		
900.0	900.0	900.0	900.0	1.9	1.9	91.05	-0.4	19.7	19.7	15.9	3.82	5.163		
1,000.0	1,000.0	1,000.0	1,000.0	2.1	2.1	91.05	-0.4	19.7	19.7	15.5	4.27	4.620		
1,100.0	1,100.0	1,100.0	1,100.0	2.4	2.4	91.05	-0.4	19.7	19.7	15.0	4.72	4.180		
1,200.0	1,200.0	1,200.0	1,200.0	2.6	2.6	91.05	-0.4	19.7	19.7	14.6	5.17	3.816		
1,300.0	1,300.0	1,300.0	1,300.0	2.8	2.8	91.05	-0.4	19.7	19.7	14.1	5.62	3.511		
1,400.0	1,400.0	1,400.0	1,400.0	3.0	3.0	91.05	-0.4	19.7	19.7	13.7	6.07	3.251 CC, ES		
1,500.0	1,500.0	1,500.0	1,500.0	3.2	3.3	-175.89	-0.4	19.7	21.5	15.0	6.50	3.303		
1,594.9	1,594.8	1,594.8	1,594.8	3.4	3.5	-176.64	-0.4	19.7	26.3	19.4	6.89	3.821		
1,600.0	1,599.8	1,599.8	1,599.8	3.4	3.5	-176.69	-0.4	19.7	26.7	19.8	6.91	3.859		
1,700.0	1,699.6	1,699.6	1,699.6	3.7	3.7	-177.36	-0.4	19.7	33.5	26.1	7.34	4.561		
1,800.0	1,799.4	1,799.4	1,799.4	3.9	3.9	-177.80	-0.4	19.7	40.3	32.5	7.77	5.185		
1,900.0	1,899.1	1,899.1	1,899.1	4.1	4.2	-178.12	-0.4	19.7	47.1	38.9	8.20	5.741		
2,000.0	1,998.9	1,998.9	1,998.9	4.3	4.4	-178.36	-0.4	19.7	53.9	45.2	8.63	6.241		
2,100.0	2,098.7	2,098.7	2,098.7	4.6	4.6	-178.54	-0.4	19.7	60.7	51.6	9.07	6.691		
2,200.0	2,198.4	2,198.4	2,198.4	4.8	4.8	-178.69	-0.4	19.7	67.5	58.0	9.50	7.099		
2,300.0	2,298.2	2,298.2	2,298.2	5.0	5.1	-178.81	-0.4	19.7	74.3	64.3	9.94	7.470		
2,400.0	2,398.0	2,398.0	2,398.0	5.3	5.3	-178.91	-0.4	19.7	81.0	70.7	10.38	7.808		
2,500.0	2,497.8	2,497.8	2,497.8	5.5	5.5	-178.99	-0.4	19.7	87.8	77.0	10.82	8.118		
2,600.0	2,597.5	2,596.1	2,596.1	5.7	5.7	-178.85	-0.7	20.5	95.4	84.1	11.24	8.485		
2,700.0	2,697.3	2,694.1	2,694.1	6.0	5.9	-178.32	-1.7	22.7	104.4	92.8	11.64	8.970		
2,800.0	2,797.1	2,791.9	2,791.7	6.2	6.1	-177.51	-3.4	26.5	115.1	103.0	12.05	9.549		
2,900.0	2,896.8	2,889.8	2,889.5	6.5	6.3	-176.54	-5.7	31.8	127.2	114.7	12.46	10.208		
3,000.0	2,996.6	2,989.0	2,988.5	6.7	6.5	-175.66	-8.3	37.5	139.7	126.8	12.87	10.853		
3,100.0	3,096.4	3,088.2	3,087.5	7.0	6.7	-174.92	-10.8	43.2	152.2	139.0	13.29	11.457		
3,200.0	3,196.1	3,188.7	3,187.8	7.2	6.9	-174.32	-13.3	48.8	164.6	150.9	13.71	12.007		
3,300.0	3,295.9	3,290.9	3,289.9	7.5	7.1	-173.98	-15.2	53.0	175.6	161.5	14.14	12.416		
3,400.0	3,395.7	3,393.5	3,392.4	7.7	7.3	-173.88	-16.3	55.6	185.0	170.4	14.58	12.685		
3,500.0	3,495.4	3,496.3	3,495.3	8.0	7.5	-173.99	-16.8	56.5	192.6	177.6	15.00	12.838		
3,600.0	3,595.2	3,596.2	3,595.2	8.2	7.7	-174.20	-16.8	56.5	199.4	184.0	15.43	12.923		
3,700.0	3,695.0	3,696.0	3,695.0	8.5	7.9	-174.39	-16.8	56.5	206.2	190.3	15.88	12.986		
3,800.0	3,794.7	3,795.8	3,794.7	8.7	8.2	-174.57	-16.8	56.5	212.9	196.6	16.32	13.045		
3,810.5	3,805.2	3,806.3	3,805.2	8.7	8.2	-174.59	-16.8	56.5	213.6	197.3	16.37	13.051		
3,900.0	3,894.6	3,895.6	3,894.6	8.9	8.4	-174.71	-16.8	56.5	218.3	201.5	16.77	13.020		
4,005.4	4,000.0	4,001.0	4,000.0	9.1	8.6	91.81	-16.8	56.5	220.2	203.0	17.20	12.803		
4,100.0	4,094.6	4,095.6	4,094.6	9.3	8.8	91.81	-16.8	56.5	220.2	202.6	17.60	12.512		
4,200.0	4,194.6	4,195.6	4,194.6	9.5	9.0	91.81	-16.8	56.5	220.2	202.2	18.04	12.211		
4,300.0	4,294.6	4,295.6	4,294.6	9.7	9.3	91.81	-16.8	56.5	220.2	201.8	18.47	11.924		
4,400.0	4,394.6	4,395.6	4,394.6	9.9	9.5	91.81	-16.8	56.5	220.2	201.3	18.90	11.650		
4,500.0	4,494.6	4,495.6	4,494.6	10.1	9.7	91.81	-16.8	56.5	220.2	200.9	19.34	11.387		
4,600.0	4,594.6	4,595.6	4,594.6	10.3	9.9	91.81	-16.8	56.5	220.2	200.5	19.78	11.136		
4,700.0	4,694.6	4,695.6	4,694.6	10.5	10.2	91.81	-16.8	56.5	220.2	200.0	20.21	10.895		
4,800.0	4,794.6	4,795.6	4,794.6	10.8	10.4	91.81	-16.8	56.5	220.2	199.6	20.65	10.665		
4,900.0	4,894.6	4,895.6	4,894.6	11.0	10.6	91.81	-16.8	56.5	220.2	199.1	21.09	10.443		

COMPASS 2003.21 Build 46

Company:	Synergy Resources	Local Co-ordinate Reference:	Well SRC Gies D-15-22NCHZ
Project:	SEC.15-T7N-R65W	TVD Reference:	WELL @ 4851.0ft (RKB - 13')
Reference Site:	SRC Gies Pad Sec.15-T7N-R65W	MD Reference:	WELL @ 4851.0ft (RKB - 13')
Site Error:	0.0ft	North Reference:	True
Reference Well:	SRC Gies D-15-22NCHZ	Survey Calculation Method:	Minimum Curvature
Well Error:	0.0ft	Output errors are at	2.00 sigma
Reference Wellbore	Wellbore #1	Database:	Landmark
Reference Design:	Plan #2 (10-01-14)	Offset TVD Reference:	Offset Datum

Offset Design													Offset Site Error:	0.0 ft
Survey Program: 0-MWD													Offset Well Error:	0.0 ft
Reference		Offset		Semi Major Axis			Distance							Warning
Measured Depth (ft)	Vertical Depth (ft)	Measured Depth (ft)	Vertical Depth (ft)	Reference (ft)	Offset (ft)	Highside Toolface (°)	Offset Wellbore Centre +N/-S (ft)	+E/-W (ft)	Between Centres (ft)	Between Ellipses (ft)	Minimum Separation (ft)	Separation Factor		
5,000.0	4,994.6	4,995.6	4,994.6	11.2	10.8	91.81	-16.8	56.5	220.2	198.7	21.53	10.230		
5,100.0	5,094.6	5,095.6	5,094.6	11.4	11.0	91.81	-16.8	56.5	220.2	198.3	21.97	10.026		
5,200.0	5,194.6	5,195.6	5,194.6	11.6	11.3	91.81	-16.8	56.5	220.2	197.8	22.41	9.830		
5,300.0	5,294.6	5,295.6	5,294.6	11.8	11.5	91.81	-16.8	56.5	220.2	197.4	22.85	9.640		
5,400.0	5,394.6	5,395.6	5,394.6	12.0	11.7	91.81	-16.8	56.5	220.2	197.0	23.29	9.458		
5,500.0	5,494.6	5,495.6	5,494.6	12.2	11.9	91.81	-16.8	56.5	220.2	196.5	23.73	9.283		
5,600.0	5,594.6	5,595.6	5,594.6	12.4	12.2	91.81	-16.8	56.5	220.2	196.1	24.17	9.113		
5,700.0	5,694.6	5,695.6	5,694.6	12.6	12.4	91.81	-16.8	56.5	220.2	195.6	24.61	8.950		
5,800.0	5,794.6	5,795.6	5,794.6	12.9	12.6	91.81	-16.8	56.5	220.2	195.2	25.05	8.792		
5,900.0	5,894.6	5,895.6	5,894.6	13.1	12.8	91.81	-16.8	56.5	220.2	194.7	25.49	8.640		
6,000.0	5,994.6	5,995.6	5,994.6	13.3	13.1	91.81	-16.8	56.5	220.2	194.3	25.93	8.493		
6,100.0	6,094.6	6,095.6	6,094.6	13.5	13.3	91.81	-16.8	56.5	220.2	193.9	26.37	8.350		
6,200.0	6,194.6	6,195.6	6,194.6	13.7	13.5	91.81	-16.8	56.5	220.2	193.4	26.82	8.213		
6,300.0	6,294.6	6,295.6	6,294.6	13.9	13.7	91.81	-16.8	56.5	220.2	193.0	27.26	8.079		
6,400.0	6,394.6	6,395.6	6,394.6	14.1	14.0	91.81	-16.8	56.5	220.2	192.5	27.70	7.950		
6,500.0	6,494.6	6,495.6	6,494.6	14.4	14.2	91.81	-16.8	56.5	220.2	192.1	28.15	7.825		
6,516.6	6,511.1	6,512.2	6,511.1	14.4	14.2	91.81	-16.8	56.5	220.2	192.0	28.22	7.805		
6,600.0	6,594.6	6,594.6	6,593.5	14.6	14.4	92.69	-20.2	56.5	220.4	191.8	28.56	7.717		
6,700.0	6,694.6	6,690.7	6,688.2	14.8	14.6	96.76	-35.9	56.6	221.8	192.9	28.95	7.661		
6,799.2	6,793.8	6,780.5	6,774.1	15.0	14.7	103.31	-61.9	56.7	227.2	197.9	29.36	7.741		
6,850.0	6,844.5	6,824.2	6,814.5	15.1	14.8	-72.45	-78.4	56.8	232.2	202.7	29.55	7.858		
6,900.0	6,894.2	6,866.4	6,852.6	15.2	14.9	-68.73	-96.7	56.8	238.1	208.4	29.72	8.011		
6,950.0	6,943.5	6,908.0	6,888.9	15.3	15.0	-65.26	-116.8	56.9	244.7	214.9	29.86	8.195		
7,000.0	6,992.0	6,950.0	6,924.4	15.4	15.1	-61.99	-139.3	57.0	251.9	222.0	29.97	8.407		
7,050.0	7,039.5	6,989.3	6,956.4	15.5	15.3	-59.13	-162.1	57.1	259.6	229.6	30.03	8.645		
7,100.0	7,085.8	7,029.1	6,987.4	15.6	15.4	-56.45	-187.1	57.2	267.5	237.4	30.04	8.905		
7,150.0	7,130.7	7,068.5	7,016.7	15.7	15.6	-54.03	-213.4	57.3	275.5	245.5	29.99	9.186		
7,200.0	7,174.0	7,107.4	7,044.2	15.8	15.7	-51.85	-240.9	57.4	283.4	253.5	29.88	9.485		
7,250.0	7,215.4	7,150.0	7,072.5	16.0	16.0	-49.74	-272.7	57.5	291.3	261.5	29.73	9.797		
7,300.0	7,254.8	7,184.2	7,093.9	16.1	16.2	-48.13	-299.4	57.6	298.8	269.3	29.54	10.117		
7,350.0	7,291.9	7,222.0	7,116.0	16.3	16.4	-46.57	-330.2	57.7	306.1	276.8	29.31	10.442		
7,400.0	7,326.6	7,259.7	7,136.3	16.5	16.7	-45.20	-361.8	57.8	312.9	283.8	29.07	10.765		
7,450.0	7,358.6	7,300.0	7,156.2	16.8	17.0	-43.92	-396.9	57.9	319.3	290.5	28.82	11.077		
7,500.0	7,388.0	7,334.2	7,171.6	17.1	17.2	-42.93	-427.4	58.0	325.1	296.5	28.59	11.371		
7,550.0	7,414.4	7,371.1	7,186.5	17.4	17.6	-42.02	-461.2	58.2	330.4	302.0	28.39	11.636		
7,600.0	7,437.9	7,407.9	7,199.5	17.8	17.9	-41.25	-495.6	58.3	335.0	306.8	28.24	11.863		
7,650.0	7,458.1	7,450.0	7,212.3	18.2	18.3	-40.55	-535.7	58.4	339.1	310.9	28.18	12.034		
7,700.0	7,475.2	7,481.1	7,220.2	18.7	18.7	-40.09	-565.8	58.6	342.3	314.1	28.16	12.156		
7,750.0	7,488.9	7,517.6	7,227.8	19.2	19.1	-39.69	-601.4	58.7	344.9	316.7	28.26	12.205		
7,800.0	7,499.3	7,550.0	7,233.1	19.7	19.4	-39.42	-633.4	58.8	346.8	318.4	28.44	12.194		
7,850.0	7,506.2	7,590.3	7,237.5	20.3	19.9	-39.23	-673.5	59.0	348.0	319.2	28.80	12.082		
7,900.0	7,509.6	7,626.6	7,239.6	20.9	20.4	-39.17	-709.7	59.1	348.4	319.1	29.26	11.908		
7,924.2	7,510.0	7,649.8	7,240.0	21.2	20.7	-39.18	-733.0	59.2	348.4	318.8	29.57	11.781		
7,925.0	7,510.0	7,649.8	7,240.0	21.2	20.7	-39.18	-733.0	59.2	348.4	318.8	29.58	11.778		
7,952.7	7,510.0	7,670.6	7,240.0	21.5	20.9	-39.18	-753.7	59.3	348.3	318.3	29.98	11.616		
8,000.0	7,510.0	7,717.8	7,240.0	22.1	21.5	-39.18	-800.9	59.4	348.3	317.5	30.79	11.312		
8,100.0	7,510.0	7,817.8	7,240.0	23.5	22.9	-39.17	-900.9	59.8	348.3	315.7	32.60	10.685		
8,200.0	7,510.0	7,917.8	7,240.0	24.9	24.4	-39.17	-1,000.9	60.2	348.3	313.8	34.52	10.090		
8,300.0	7,510.0	8,017.8	7,240.0	26.4	25.9	-39.17	-1,100.9	60.5	348.3	311.7	36.53	9.533		
8,400.0	7,510.0	8,117.8	7,240.0	27.9	27.4	-39.17	-1,200.9	60.9	348.3	309.6	38.63	9.015		
8,500.0	7,510.0	8,217.8	7,240.0	29.5	29.0	-39.17	-1,300.9	61.3	348.3	307.5	40.80	8.536		
8,600.0	7,510.0	8,317.8	7,240.0	31.1	30.7	-39.17	-1,400.9	61.6	348.2	305.2	43.03	8.094		

CC - Min centre to center distance or convergent point, SF - min separation factor, ES - min ellipse separation

Offset Design SRC Gies Pad Sec.15-T7N-R65W - SRC Gies D-15-22NHZ - Wellbore #1 - Plan #1 (5-7-14)													Offset Site Error: 0.0 ft	
Survey Program: 0-MWD													Offset Well Error: 0.0 ft	
Reference		Offset		Semi Major Axis			Distance							Warning
Measured Depth	Vertical Depth	Measured Depth	Vertical Depth	Reference	Offset	Highside Toolface	Offset Wellbore Centre		Between Centres	Between Ellipses	Minimum Separation	Separation Factor		
(ft)	(ft)	(ft)	(ft)	(ft)	(ft)	(°)	+N/-S (ft)	+E/-W (ft)	(ft)	(ft)	(ft)			
8,700.0	7,510.0	8,417.8	7,240.0	32.8	32.4	-39.17	-1,500.9	62.0	348.2	302.9	45.30	7.687		
8,800.0	7,510.0	8,517.8	7,240.0	34.5	34.1	-39.16	-1,600.9	62.4	348.2	300.6	47.62	7.313		
8,900.0	7,510.0	8,617.8	7,240.0	36.2	35.8	-39.16	-1,700.9	62.8	348.2	298.3	49.97	6.968		
9,000.0	7,510.0	8,717.8	7,240.0	37.9	37.5	-39.16	-1,800.9	63.1	348.2	295.9	52.36	6.650		
9,100.0	7,510.0	8,817.8	7,240.0	39.7	39.3	-39.16	-1,900.9	63.5	348.2	293.4	54.77	6.357		
9,200.0	7,510.0	8,917.8	7,240.0	41.4	41.1	-39.16	-2,000.9	63.9	348.2	291.0	57.21	6.086		
9,300.0	7,510.0	9,017.8	7,240.0	43.2	42.9	-39.16	-2,100.9	64.2	348.2	288.5	59.67	5.835		
9,400.0	7,510.0	9,117.8	7,240.0	45.0	44.6	-39.16	-2,200.9	64.6	348.2	286.0	62.15	5.603		
9,500.0	7,510.0	9,217.8	7,240.0	46.8	46.5	-39.15	-2,300.9	65.0	348.2	283.5	64.64	5.386		
9,600.0	7,510.0	9,317.8	7,240.0	48.6	48.3	-39.15	-2,400.9	65.3	348.2	281.0	67.15	5.185		
9,700.0	7,510.0	9,417.8	7,240.0	50.4	50.1	-39.15	-2,500.9	65.7	348.2	278.5	69.67	4.997		
9,800.0	7,510.0	9,517.8	7,240.0	52.3	51.9	-39.15	-2,600.9	66.1	348.2	276.0	72.21	4.822		
9,900.0	7,510.0	9,617.8	7,240.0	54.1	53.8	-39.15	-2,700.9	66.5	348.2	273.4	74.75	4.658		
10,000.0	7,510.0	9,717.8	7,240.0	55.9	55.6	-39.15	-2,800.9	66.8	348.2	270.8	77.30	4.504		
10,100.0	7,510.0	9,817.8	7,240.0	57.8	57.5	-39.15	-2,900.9	67.2	348.1	268.3	79.87	4.359		
10,200.0	7,510.0	9,917.8	7,240.0	59.6	59.3	-39.14	-3,000.9	67.6	348.1	265.7	82.44	4.223		
10,300.0	7,510.0	10,017.8	7,240.0	61.5	61.2	-39.14	-3,100.9	67.9	348.1	263.1	85.01	4.095		
10,400.0	7,510.0	10,117.8	7,240.0	63.3	63.1	-39.14	-3,200.9	68.3	348.1	260.5	87.59	3.974		
10,500.0	7,510.0	10,217.8	7,240.0	65.2	64.9	-39.14	-3,300.9	68.7	348.1	257.9	90.18	3.860		
10,600.0	7,510.0	10,317.8	7,240.0	67.1	66.8	-39.14	-3,400.9	69.0	348.1	255.3	92.78	3.752		
10,700.0	7,510.0	10,417.8	7,240.0	68.9	68.7	-39.14	-3,500.9	69.4	348.1	252.7	95.37	3.650		
10,800.0	7,510.0	10,517.8	7,240.0	70.8	70.5	-39.14	-3,600.9	69.8	348.1	250.1	97.98	3.553		
10,900.0	7,510.0	10,617.8	7,240.0	72.7	72.4	-39.14	-3,700.9	70.2	348.1	247.5	100.58	3.461		
11,000.0	7,510.0	10,717.8	7,240.0	74.6	74.3	-39.13	-3,800.9	70.5	348.1	244.9	103.20	3.373		
11,100.0	7,510.0	10,817.8	7,240.0	76.4	76.2	-39.13	-3,900.9	70.9	348.1	242.3	105.81	3.290		
11,200.0	7,510.0	10,917.8	7,240.0	78.3	78.1	-39.13	-4,000.9	71.3	348.1	239.6	108.43	3.210		
11,300.0	7,510.0	11,017.8	7,240.0	80.2	80.0	-39.13	-4,100.9	71.6	348.1	237.0	111.05	3.134		
11,400.0	7,510.0	11,117.8	7,240.0	82.1	81.8	-39.13	-4,200.9	72.0	348.1	234.4	113.67	3.062		
11,500.0	7,510.0	11,217.8	7,240.0	84.0	83.7	-39.13	-4,300.9	72.4	348.1	231.8	116.30	2.993		
11,600.0	7,510.0	11,317.8	7,240.0	85.9	85.6	-39.13	-4,400.9	72.7	348.0	229.1	118.92	2.927		
11,700.0	7,510.0	11,417.8	7,240.0	87.8	87.5	-39.12	-4,500.9	73.1	348.0	226.5	121.50	2.865		
11,715.1	7,510.0	11,432.9	7,240.0	88.1	87.7	-39.12	-4,516.0	73.2	348.0	226.2	121.85	2.856 SF		

Company:	Synergy Resources	Local Co-ordinate Reference:	Well SRC Gies D-15-22NCHZ
Project:	SEC.15-T7N-R65W	TVD Reference:	WELL @ 4851.0ft (RKB - 13')
Reference Site:	SRC Gies Pad Sec.15-T7N-R65W	MD Reference:	WELL @ 4851.0ft (RKB - 13')
Site Error:	0.0ft	North Reference:	True
Reference Well:	SRC Gies D-15-22NCHZ	Survey Calculation Method:	Minimum Curvature
Well Error:	0.0ft	Output errors are at	2.00 sigma
Reference Wellbore	Wellbore #1	Database:	Landmark
Reference Design:	Plan #2 (10-01-14)	Offset TVD Reference:	Offset Datum

Offset Design													Offset Site Error:	0.0 ft
Survey Program: 0-MWD													Offset Well Error:	0.0 ft
Reference		Offset		Semi Major Axis			Distance							Warning
Measured Depth (ft)	Vertical Depth (ft)	Measured Depth (ft)	Vertical Depth (ft)	Reference (ft)	Offset (ft)	Highside Toolface (°)	Offset Wellbore Centre +N/-S (ft)	+E/-W (ft)	Between Centres (ft)	Between Ellipses (ft)	Minimum Separation (ft)	Separation Factor		
0.0	0.0	0.0	0.0	0.0	0.0	-87.91	1.5	-40.0	40.0					
100.0	100.0	100.0	100.0	0.1	0.1	-87.91	1.5	-40.0	40.0	39.8	0.22	178.116		
200.0	200.0	200.0	200.0	0.3	0.3	-87.91	1.5	-40.0	40.0	39.4	0.67	59.372		
300.0	300.0	300.0	300.0	0.6	0.6	-87.91	1.5	-40.0	40.0	38.9	1.12	35.623		
400.0	400.0	400.0	400.0	0.8	0.8	-87.91	1.5	-40.0	40.0	38.5	1.57	25.445		
500.0	500.0	500.0	500.0	1.0	1.0	-87.91	1.5	-40.0	40.0	38.0	2.02	19.791		
600.0	600.0	600.0	600.0	1.2	1.2	-87.91	1.5	-40.0	40.0	37.6	2.47	16.192 CC, ES		
700.0	700.0	698.6	698.6	1.5	1.4	-87.98	1.5	-41.7	41.8	38.8	2.91	14.365		
800.0	800.0	796.9	796.8	1.7	1.7	-88.18	1.5	-46.8	46.9	43.6	3.34	14.052		
900.0	900.0	894.8	894.3	1.9	1.9	-88.42	1.5	-55.2	55.5	51.7	3.79	14.649		
1,000.0	1,000.0	993.8	992.7	2.1	2.1	-88.64	1.6	-66.0	66.4	62.2	4.26	15.589		
1,100.0	1,100.0	1,093.2	1,091.5	2.4	2.4	-88.80	1.6	-76.9	77.4	72.7	4.75	16.309		
1,200.0	1,200.0	1,192.6	1,190.3	2.6	2.7	-88.93	1.6	-87.9	88.4	83.2	5.24	16.865		
1,300.0	1,300.0	1,292.0	1,289.0	2.8	2.9	-89.02	1.7	-98.8	99.5	93.7	5.75	17.304		
1,400.0	1,400.0	1,391.4	1,387.8	3.0	3.2	-89.10	1.7	-109.8	110.5	104.2	6.26	17.659		
1,500.0	1,500.0	1,490.9	1,486.8	3.2	3.5	4.32	1.8	-120.7	119.8	113.3	6.43	18.631		
1,594.9	1,594.8	1,585.7	1,581.0	3.4	3.8	4.42	1.8	-131.2	125.4	118.5	6.83	18.365		
1,600.0	1,599.8	1,590.8	1,586.0	3.4	3.8	4.43	1.8	-131.7	125.6	118.7	6.85	18.338		
1,700.0	1,699.6	1,690.7	1,685.3	3.7	4.1	4.60	1.9	-142.8	129.8	122.5	7.28	17.833		
1,800.0	1,799.4	1,790.6	1,784.6	3.9	4.4	4.75	1.9	-153.8	134.1	126.4	7.72	17.376		
1,900.0	1,899.1	1,890.5	1,883.9	4.1	4.7	4.90	1.9	-164.8	138.3	130.2	8.16	16.961		
2,000.0	1,998.9	1,990.4	1,983.2	4.3	5.0	5.03	2.0	-175.8	142.6	134.0	8.60	16.582		
2,100.0	2,098.7	2,090.3	2,082.5	4.6	5.3	5.16	2.0	-186.8	146.8	137.8	9.04	16.236		
2,200.0	2,198.4	2,190.2	2,181.8	4.8	5.6	5.28	2.1	-197.8	151.1	141.6	9.49	15.919		
2,300.0	2,298.2	2,290.1	2,281.1	5.0	5.9	5.40	2.1	-208.8	155.4	145.4	9.94	15.627		
2,400.0	2,398.0	2,390.0	2,380.4	5.3	6.2	5.51	2.2	-219.8	159.6	149.2	10.39	15.358		
2,500.0	2,497.8	2,489.9	2,479.7	5.5	6.5	5.61	2.2	-230.8	163.9	153.0	10.85	15.109		
2,600.0	2,597.5	2,589.8	2,579.0	5.7	6.8	5.71	2.2	-241.8	168.1	156.8	11.30	14.879		
2,700.0	2,697.3	2,689.8	2,678.3	6.0	7.1	5.80	2.3	-252.8	172.4	160.6	11.76	14.664		
2,800.0	2,797.1	2,789.7	2,777.6	6.2	7.4	5.89	2.3	-263.8	176.6	164.4	12.21	14.465		
2,900.0	2,896.8	2,889.6	2,876.9	6.5	7.7	5.97	2.4	-274.8	180.9	168.2	12.67	14.279		
3,000.0	2,996.6	2,989.5	2,976.2	6.7	8.0	6.05	2.4	-285.8	185.2	172.0	13.13	14.104		
3,100.0	3,096.4	3,089.4	3,075.5	7.0	8.3	6.13	2.5	-296.8	189.4	175.8	13.59	13.941		
3,200.0	3,196.1	3,189.3	3,174.8	7.2	8.6	6.20	2.5	-307.8	193.7	179.6	14.05	13.788		
3,300.0	3,295.9	3,289.2	3,274.1	7.5	8.9	6.27	2.6	-318.8	198.0	183.4	14.51	13.644		
3,400.0	3,395.7	3,389.1	3,373.4	7.7	9.2	6.34	2.6	-329.8	202.2	187.2	14.97	13.509		
3,500.0	3,495.4	3,489.0	3,472.7	8.0	9.6	6.40	2.6	-340.9	206.5	191.0	15.43	13.381		
3,600.0	3,595.2	3,588.9	3,572.0	8.2	9.9	6.47	2.7	-351.9	210.7	194.8	15.89	13.260		
3,700.0	3,695.0	3,688.8	3,671.3	8.5	10.2	6.53	2.7	-362.9	215.0	198.6	16.36	13.145		
3,800.0	3,794.7	3,788.7	3,770.6	8.7	10.5	6.58	2.8	-373.9	219.3	202.4	16.82	13.037		
3,810.5	3,805.2	3,799.2	3,781.1	8.7	10.5	6.59	2.8	-375.0	219.7	202.8	16.87	13.025		
3,900.0	3,894.6	3,888.6	3,869.9	8.9	10.8	6.61	2.8	-384.9	224.9	207.7	17.26	13.033		
4,005.4	4,000.0	3,993.6	3,974.2	9.1	11.1	-86.89	2.9	-396.4	234.6	216.9	17.68	13.269		
4,100.0	4,094.6	4,087.6	4,067.6	9.3	11.4	-87.01	2.9	-406.8	245.0	226.9	18.09	13.543		
4,200.0	4,194.6	4,186.9	4,166.4	9.5	11.7	-87.13	2.9	-417.7	256.0	237.5	18.53	13.812		
4,300.0	4,294.6	4,286.3	4,265.2	9.7	12.0	-87.24	3.0	-428.7	267.0	248.0	18.98	14.068		
4,400.0	4,394.6	4,385.7	4,364.0	9.9	12.3	-87.34	3.0	-439.6	278.0	258.6	19.43	14.312		
4,500.0	4,494.6	4,485.1	4,462.8	10.1	12.6	-87.43	3.1	-450.6	289.0	269.1	19.87	14.544		
4,600.0	4,594.6	4,584.5	4,561.5	10.3	12.9	-87.52	3.1	-461.5	300.0	279.7	20.32	14.766		
4,700.0	4,694.6	4,683.9	4,660.3	10.5	13.2	-87.60	3.2	-472.5	311.0	290.3	20.77	14.978		
4,800.0	4,794.6	4,783.3	4,759.1	10.8	13.5	-87.67	3.2	-483.4	322.0	300.8	21.21	15.180		
4,900.0	4,894.6	4,882.7	4,857.9	11.0	13.8	-87.74	3.2	-494.4	333.1	311.4	21.66	15.374		

CC - Min centre to center distance or convergent point, SF - min separation factor, ES - min ellipse separation

Company:	Synergy Resources	Local Co-ordinate Reference:	Well SRC Gies D-15-22NCHZ
Project:	SEC.15-T7N-R65W	TVD Reference:	WELL @ 4851.0ft (RKB - 13')
Reference Site:	SRC Gies Pad Sec.15-T7N-R65W	MD Reference:	WELL @ 4851.0ft (RKB - 13')
Site Error:	0.0ft	North Reference:	True
Reference Well:	SRC Gies D-15-22NCHZ	Survey Calculation Method:	Minimum Curvature
Well Error:	0.0ft	Output errors are at	2.00 sigma
Reference Wellbore	Wellbore #1	Database:	Landmark
Reference Design:	Plan #2 (10-01-14)	Offset TVD Reference:	Offset Datum

Offset Design		SRC Gies Pad Sec.15-T7N-R65W - SRC Gies T-15-22CHZ - Wellbore #1 - Plan #1 (5-7-14)											Offset Site Error:		0.0 ft
Survey Program: 0-MWD													Offset Well Error:		0.0 ft
Reference		Offset		Semi Major Axis			Distance							Warning	
Measured Depth (ft)	Vertical Depth (ft)	Measured Depth (ft)	Vertical Depth (ft)	Reference (ft)	Offset (ft)	Highside Toolface (°)	Offset Wellbore Centre +N/-S (ft)	+E/-W (ft)	Between Centres (ft)	Between Ellipses (ft)	Minimum Separation (ft)	Separation Factor			
5,000.0	4,994.6	4,982.1	4,956.7	11.2	14.1	-87.81	3.3	-505.3	344.1	321.9	22.11	15.560			
5,100.0	5,094.6	5,081.5	5,055.5	11.4	14.4	-87.87	3.3	-516.3	355.1	332.5	22.56	15.738			
5,200.0	5,194.6	5,180.9	5,154.3	11.6	14.7	-87.93	3.4	-527.2	366.1	343.1	23.01	15.908			
5,300.0	5,294.6	5,280.3	5,253.1	11.8	15.1	-87.98	3.4	-538.2	377.1	353.6	23.46	16.072			
5,400.0	5,394.6	5,379.6	5,351.8	12.0	15.4	-88.03	3.4	-549.1	388.1	364.2	23.91	16.229			
5,500.0	5,494.6	5,479.0	5,450.6	12.2	15.7	-88.08	3.5	-560.1	399.1	374.7	24.37	16.380			
5,600.0	5,594.6	5,578.4	5,549.4	12.4	16.0	-88.13	3.5	-571.0	410.1	385.3	24.82	16.526			
5,700.0	5,694.6	5,677.8	5,648.2	12.6	16.3	-88.17	3.6	-582.0	421.1	395.9	25.27	16.666			
5,800.0	5,794.6	5,788.4	5,758.2	12.9	16.6	-88.21	3.6	-593.2	431.3	405.6	25.73	16.766			
5,900.0	5,894.6	5,906.0	5,875.6	13.1	16.8	-88.24	3.7	-600.7	437.7	411.6	26.15	16.736			
6,000.0	5,994.6	6,024.1	5,993.6	13.3	17.0	-88.25	3.7	-603.4	440.0	413.4	26.58	16.557			
6,100.0	6,094.6	6,125.1	6,094.6	13.5	17.1	-88.25	3.7	-603.4	440.0	413.0	26.99	16.305			
6,200.0	6,194.6	6,225.1	6,194.6	13.7	17.3	-88.25	3.7	-603.4	440.0	412.6	27.40	16.060			
6,300.0	6,294.6	6,325.1	6,294.6	13.9	17.5	-88.25	3.7	-603.4	440.0	412.2	27.81	15.822			
6,400.0	6,394.6	6,425.1	6,394.6	14.1	17.6	-88.25	3.7	-603.4	440.0	411.8	28.23	15.589			
6,500.0	6,494.6	6,525.1	6,494.6	14.4	17.8	-88.25	3.7	-603.4	440.0	411.4	28.64	15.363			
6,600.0	6,594.6	6,625.1	6,594.6	14.6	18.0	-88.25	3.7	-603.4	440.0	411.0	29.06	15.143			
6,700.0	6,694.6	6,725.1	6,694.6	14.8	18.1	-88.25	3.7	-603.4	440.0	410.5	29.47	14.929			
6,799.2	6,793.8	6,824.3	6,793.8	15.0	18.3	-88.25	3.7	-603.4	440.0	410.1	29.89	14.722			
6,850.0	6,844.5	6,876.2	6,845.6	15.1	18.4	91.97	1.8	-603.4	440.0	409.9	30.08	14.626			
6,900.0	6,894.2	6,927.2	6,896.4	15.2	18.5	91.95	-3.7	-603.4	440.0	409.7	30.27	14.537			
6,950.0	6,943.5	6,978.3	6,946.6	15.3	18.5	91.93	-12.8	-603.3	440.0	409.5	30.45	14.448			
7,000.0	6,992.0	7,029.3	6,996.1	15.4	18.6	91.89	-25.5	-603.3	440.0	409.3	30.65	14.358			
7,050.0	7,039.5	7,080.4	7,044.4	15.5	18.7	91.85	-41.6	-603.2	440.0	409.1	30.85	14.264			
7,100.0	7,085.8	7,131.3	7,091.5	15.6	18.8	91.80	-61.2	-603.2	440.0	408.9	31.06	14.163			
7,150.0	7,130.7	7,182.3	7,137.1	15.7	18.9	91.73	-84.0	-603.1	440.0	408.7	31.30	14.054			
7,200.0	7,174.0	7,233.2	7,180.9	15.8	19.0	91.66	-110.0	-603.0	439.9	408.4	31.57	13.933			
7,250.0	7,215.4	7,284.1	7,222.7	16.0	19.2	91.59	-139.0	-602.9	439.9	408.0	31.88	13.797			
7,300.0	7,254.8	7,335.0	7,262.3	16.1	19.3	91.50	-170.8	-602.7	439.9	407.7	32.24	13.644			
7,350.0	7,291.9	7,385.7	7,299.5	16.3	19.4	91.41	-205.4	-602.6	439.9	407.2	32.65	13.471			
7,400.0	7,326.6	7,436.5	7,334.1	16.5	19.6	91.31	-242.4	-602.5	439.9	406.7	33.13	13.277			
7,450.0	7,358.6	7,487.1	7,366.0	16.8	19.8	91.20	-281.8	-602.3	439.9	406.2	33.68	13.061			
7,500.0	7,388.0	7,537.8	7,395.0	17.1	20.1	91.09	-323.3	-602.2	439.8	405.5	34.30	12.825			
7,550.0	7,414.4	7,588.3	7,420.9	17.4	20.3	90.97	-366.6	-602.0	439.8	404.8	34.99	12.569			
7,600.0	7,437.9	7,638.8	7,443.7	17.8	20.6	90.85	-411.7	-601.8	439.8	404.0	35.77	12.295			
7,650.0	7,458.1	7,689.2	7,463.3	18.2	21.0	90.72	-458.1	-601.7	439.8	403.2	36.63	12.007			
7,700.0	7,475.2	7,739.5	7,479.5	18.7	21.4	90.59	-505.8	-601.5	439.8	402.2	37.56	11.708			
7,750.0	7,488.9	7,789.8	7,492.3	19.2	21.8	90.46	-554.4	-601.3	439.8	401.2	38.57	11.401			
7,800.0	7,499.3	7,840.0	7,501.7	19.7	22.3	90.32	-603.7	-601.1	439.8	400.1	39.65	11.090			
7,850.0	7,506.2	7,890.1	7,507.6	20.3	22.8	90.18	-653.4	-600.9	439.8	399.0	40.80	10.780			
7,900.0	7,509.6	7,940.2	7,509.9	20.9	23.3	90.05	-703.4	-600.7	439.8	397.8	41.99	10.473			
7,902.3	7,509.7	7,942.5	7,510.0	20.9	23.3	90.04	-705.7	-600.7	439.8	397.7	42.05	10.459			
7,924.2	7,510.0	7,964.4	7,510.0	21.2	23.6	90.00	-727.7	-600.6	439.8	397.2	42.59	10.326			
7,925.0	7,510.0	7,965.2	7,510.0	21.2	23.6	90.00	-728.5	-600.6	439.8	397.2	42.61	10.321			
8,000.0	7,510.0	8,040.2	7,510.0	22.1	24.4	90.00	-803.4	-600.3	439.8	395.2	44.53	9.875			
8,100.0	7,510.0	8,140.2	7,510.0	23.5	25.7	90.00	-903.4	-600.0	439.8	392.5	47.24	9.310			
8,200.0	7,510.0	8,240.2	7,510.0	24.9	27.0	90.00	-1,003.4	-599.6	439.8	389.7	50.09	8.779			
8,300.0	7,510.0	8,340.2	7,510.0	26.4	28.4	90.00	-1,103.4	-599.2	439.8	386.7	53.07	8.286			
8,400.0	7,510.0	8,440.2	7,510.0	27.9	29.9	90.00	-1,203.4	-598.8	439.8	383.6	56.16	7.830			
8,500.0	7,510.0	8,540.2	7,510.0	29.5	31.4	90.00	-1,303.4	-598.4	439.8	380.4	59.34	7.411			
8,600.0	7,510.0	8,640.2	7,510.0	31.1	32.9	90.00	-1,403.4	-598.1	439.8	377.2	62.59	7.026			
8,700.0	7,510.0	8,740.2	7,510.0	32.8	34.5	90.00	-1,503.4	-597.7	439.8	373.9	65.91	6.673			

CC - Min centre to center distance or convergent point, SF - min separation factor, ES - min ellipse separation

Company:	Synergy Resources	Local Co-ordinate Reference:	Well SRC Gies D-15-22NCHZ
Project:	SEC.15-T7N-R65W	TVD Reference:	WELL @ 4851.0ft (RKB - 13')
Reference Site:	SRC Gies Pad Sec.15-T7N-R65W	MD Reference:	WELL @ 4851.0ft (RKB - 13')
Site Error:	0.0ft	North Reference:	True
Reference Well:	SRC Gies D-15-22NCHZ	Survey Calculation Method:	Minimum Curvature
Well Error:	0.0ft	Output errors are at	2.00 sigma
Reference Wellbore	Wellbore #1	Database:	Landmark
Reference Design:	Plan #2 (10-01-14)	Offset TVD Reference:	Offset Datum

Offset Design												Offset Site Error:	0.0 ft
SRC Gies Pad Sec.15-T7N-R65W - SRC Gies T-15-22CHZ - Wellbore #1 - Plan #1 (5-7-14)												Offset Well Error:	0.0 ft
Survey Program: 0-MWD													
Reference		Offset		Semi Major Axis			Distance						
Measured Depth (ft)	Vertical Depth (ft)	Measured Depth (ft)	Vertical Depth (ft)	Reference (ft)	Offset (ft)	Highside Toolface (°)	Offset Wellbore Centre +N/-S (ft)	+E/-W (ft)	Between Centres (ft)	Between Ellipses (ft)	Minimum Separation (ft)	Separation Factor	Warning
8,800.0	7,510.0	8,840.2	7,510.0	34.5	36.1	90.00	-1,603.4	-597.3	439.8	370.5	69.28	6.348	
8,900.0	7,510.0	8,940.2	7,510.0	36.2	37.8	90.00	-1,703.4	-596.9	439.8	367.1	72.70	6.049	
9,000.0	7,510.0	9,040.2	7,510.0	37.9	39.4	90.00	-1,803.4	-596.6	439.8	363.6	76.16	5.774	
9,100.0	7,510.0	9,140.2	7,510.0	39.7	41.1	90.00	-1,903.4	-596.2	439.8	360.1	79.66	5.521	
9,200.0	7,510.0	9,240.2	7,510.0	41.4	42.9	90.00	-2,003.4	-595.8	439.8	356.6	83.19	5.287	
9,300.0	7,510.0	9,340.2	7,510.0	43.2	44.6	90.00	-2,103.4	-595.4	439.8	353.0	86.74	5.070	
9,400.0	7,510.0	9,440.2	7,510.0	45.0	46.3	90.00	-2,203.4	-595.0	439.8	349.5	90.32	4.869	
9,500.0	7,510.0	9,540.2	7,510.0	46.8	48.1	90.00	-2,303.4	-594.7	439.8	345.9	93.92	4.683	
9,600.0	7,510.0	9,640.2	7,510.0	48.6	49.9	90.00	-2,403.4	-594.3	439.8	342.2	97.54	4.509	
9,700.0	7,510.0	9,740.2	7,510.0	50.4	51.7	90.00	-2,503.4	-593.9	439.8	338.6	101.18	4.347	
9,800.0	7,510.0	9,840.2	7,510.0	52.3	53.5	90.00	-2,603.4	-593.5	439.8	335.0	104.83	4.195	
9,900.0	7,510.0	9,940.2	7,510.0	54.1	55.3	90.00	-2,703.4	-593.1	439.8	331.3	108.50	4.054	
10,000.0	7,510.0	10,040.2	7,510.0	55.9	57.1	90.00	-2,803.4	-592.8	439.8	327.6	112.17	3.921	
10,100.0	7,510.0	10,140.2	7,510.0	57.8	58.9	90.00	-2,903.4	-592.4	439.8	323.9	115.86	3.796	
10,200.0	7,510.0	10,240.2	7,510.0	59.6	60.7	90.00	-3,003.4	-592.0	439.8	320.2	119.56	3.678	
10,300.0	7,510.0	10,340.2	7,510.0	61.5	62.6	90.00	-3,103.4	-591.6	439.8	316.5	123.27	3.568	
10,400.0	7,510.0	10,440.2	7,510.0	63.3	64.4	90.00	-3,203.4	-591.2	439.8	312.8	126.99	3.463	
10,500.0	7,510.0	10,540.2	7,510.0	65.2	66.2	90.00	-3,303.4	-590.9	439.8	309.1	130.71	3.365	
10,600.0	7,510.0	10,640.2	7,510.0	67.1	68.1	90.00	-3,403.4	-590.5	439.8	305.4	134.44	3.271	
10,700.0	7,510.0	10,740.2	7,510.0	68.9	69.9	90.00	-3,503.4	-590.1	439.8	301.6	138.18	3.183	
10,800.0	7,510.0	10,840.2	7,510.0	70.8	71.8	90.00	-3,603.4	-589.7	439.8	297.9	141.93	3.099	
10,900.0	7,510.0	10,940.2	7,510.0	72.7	73.6	90.00	-3,703.4	-589.3	439.8	294.1	145.68	3.019	
11,000.0	7,510.0	11,040.2	7,510.0	74.6	75.5	90.00	-3,803.4	-589.0	439.8	290.4	149.43	2.943	
11,100.0	7,510.0	11,140.2	7,510.0	76.4	77.4	90.00	-3,903.4	-588.6	439.8	286.6	153.19	2.871	
11,200.0	7,510.0	11,240.2	7,510.0	78.3	79.2	90.00	-4,003.4	-588.2	439.8	282.9	156.96	2.802	
11,300.0	7,510.0	11,340.2	7,510.0	80.2	81.1	90.00	-4,103.4	-587.8	439.8	279.1	160.72	2.736	
11,400.0	7,510.0	11,440.2	7,510.0	82.1	83.0	90.00	-4,203.4	-587.4	439.8	275.3	164.50	2.674	
11,500.0	7,510.0	11,540.2	7,510.0	84.0	84.9	90.00	-4,303.4	-587.1	439.8	271.5	168.27	2.614	
11,600.0	7,510.0	11,640.2	7,510.0	85.9	86.7	90.00	-4,403.4	-586.7	439.8	267.8	172.05	2.556	
11,700.0	7,510.0	11,740.2	7,510.0	87.8	88.5	90.00	-4,503.4	-586.3	439.8	264.1	175.69	2.503	
11,703.0	7,510.0	11,743.2	7,510.0	87.8	88.5	90.00	-4,506.4	-586.3	439.8	264.0	175.79	2.502	
11,715.1	7,510.0	11,751.8	7,510.0	88.1	88.7	90.00	-4,515.0	-586.3	439.8	263.7	176.15	2.497 SF	

Company:	Synergy Resources	Local Co-ordinate Reference:	Well SRC Gies D-15-22NCHZ
Project:	SEC.15-T7N-R65W	TVD Reference:	WELL @ 4851.0ft (RKB - 13')
Reference Site:	SRC Gies Pad Sec.15-T7N-R65W	MD Reference:	WELL @ 4851.0ft (RKB - 13')
Site Error:	0.0ft	North Reference:	True
Reference Well:	SRC Gies D-15-22NCHZ	Survey Calculation Method:	Minimum Curvature
Well Error:	0.0ft	Output errors are at	2.00 sigma
Reference Wellbore	Wellbore #1	Database:	Landmark
Reference Design:	Plan #2 (10-01-14)	Offset TVD Reference:	Offset Datum

Offset Design												Offset Site Error:	0.0 ft
Survey Program: 0-MWD												Offset Well Error:	0.0 ft
Reference		Offset		Semi Major Axis			Distance						
Measured Depth (ft)	Vertical Depth (ft)	Measured Depth (ft)	Vertical Depth (ft)	Reference (ft)	Offset (ft)	Highside Toolface (°)	Offset Wellbore Centre +N/-S (ft)	+E/-W (ft)	Between Centres (ft)	Between Ellipses (ft)	Minimum Separation (ft)	Separation Factor	Warning
0.0	0.0	0.0	0.0	0.0	0.0	-87.89	0.7	-20.0	20.0				
100.0	100.0	100.0	100.0	0.1	0.1	-87.89	0.7	-20.0	20.0	19.8	0.22	89.059	
200.0	200.0	200.0	200.0	0.3	0.3	-87.89	0.7	-20.0	20.0	19.3	0.67	29.686	
300.0	300.0	300.0	300.0	0.6	0.6	-87.89	0.7	-20.0	20.0	18.9	1.12	17.812	
400.0	400.0	400.0	400.0	0.8	0.8	-87.89	0.7	-20.0	20.0	18.4	1.57	12.723	
500.0	500.0	500.0	500.0	1.0	1.0	-87.89	0.7	-20.0	20.0	18.0	2.02	9.895	
600.0	600.0	600.0	600.0	1.2	1.2	-87.89	0.7	-20.0	20.0	17.5	2.47	8.096	
700.0	700.0	700.0	700.0	1.5	1.5	-87.89	0.7	-20.0	20.0	17.1	2.92	6.851	
800.0	800.0	800.0	800.0	1.7	1.7	-87.89	0.7	-20.0	20.0	16.6	3.37	5.937	
900.0	900.0	900.0	900.0	1.9	1.9	-87.89	0.7	-20.0	20.0	16.2	3.82	5.239	
1,000.0	1,000.0	1,000.0	1,000.0	2.1	2.1	-87.89	0.7	-20.0	20.0	15.7	4.27	4.687	
1,100.0	1,100.0	1,100.0	1,100.0	2.4	2.4	-87.89	0.7	-20.0	20.0	15.3	4.72	4.241	
1,200.0	1,200.0	1,200.0	1,200.0	2.6	2.6	-87.89	0.7	-20.0	20.0	14.8	5.17	3.872 CC, ES	
1,300.0	1,300.0	1,299.3	1,299.2	2.8	2.8	-88.11	0.7	-21.7	21.7	16.1	5.60	3.880	
1,400.0	1,400.0	1,398.3	1,398.1	3.0	3.0	-88.59	0.7	-26.9	26.9	20.9	6.03	4.466	
1,500.0	1,500.0	1,497.0	1,496.5	3.2	3.2	4.56	0.6	-35.4	33.8	27.4	6.44	5.256	
1,594.9	1,594.8	1,591.8	1,590.8	3.4	3.4	4.68	0.5	-45.2	38.8	32.0	6.81	5.693	
1,600.0	1,599.8	1,596.9	1,595.8	3.4	3.4	4.69	0.5	-45.7	39.0	32.1	6.83	5.702	
1,700.0	1,699.6	1,696.8	1,695.2	3.7	3.7	4.98	0.3	-56.0	42.5	35.3	7.24	5.870	
1,800.0	1,799.4	1,796.8	1,794.6	3.9	3.9	5.23	0.2	-66.3	46.1	38.4	7.66	6.014	
1,900.0	1,899.1	1,896.7	1,894.0	4.1	4.2	5.43	0.1	-76.7	49.6	41.5	8.08	6.139	
2,000.0	1,998.9	1,996.6	1,993.4	4.3	4.4	5.61	0.0	-87.0	53.2	44.7	8.51	6.248	
2,100.0	2,098.7	2,096.6	2,092.8	4.6	4.7	5.77	-0.1	-97.3	56.8	47.8	8.94	6.345	
2,200.0	2,198.4	2,196.5	2,192.2	4.8	5.0	5.91	-0.2	-107.6	60.3	50.9	9.38	6.430	
2,300.0	2,298.2	2,296.4	2,291.6	5.0	5.3	6.04	-0.3	-117.9	63.9	54.1	9.82	6.505	
2,400.0	2,398.0	2,396.4	2,391.0	5.3	5.5	6.15	-0.5	-128.3	67.4	57.2	10.26	6.572	
2,500.0	2,497.8	2,496.3	2,490.4	5.5	5.8	6.25	-0.6	-138.6	71.0	60.3	10.70	6.633	
2,600.0	2,597.5	2,596.2	2,589.8	5.7	6.1	6.34	-0.7	-148.9	74.6	63.4	11.15	6.687	
2,700.0	2,697.3	2,696.2	2,689.2	6.0	6.4	6.42	-0.8	-159.2	78.1	66.5	11.60	6.736	
2,800.0	2,797.1	2,796.1	2,788.6	6.2	6.7	6.49	-0.9	-169.5	81.7	69.6	12.05	6.781	
2,900.0	2,896.8	2,896.1	2,888.0	6.5	6.9	6.56	-1.0	-179.9	85.2	72.7	12.50	6.822	
3,000.0	2,996.6	2,996.0	2,987.4	6.7	7.2	6.62	-1.1	-190.2	88.8	75.9	12.95	6.859	
3,100.0	3,096.4	3,095.9	3,086.9	7.0	7.5	6.68	-1.2	-200.5	92.4	79.0	13.40	6.893	
3,200.0	3,196.1	3,195.9	3,186.3	7.2	7.8	6.74	-1.4	-210.8	95.9	82.1	13.85	6.924	
3,300.0	3,295.9	3,295.8	3,285.7	7.5	8.1	6.79	-1.5	-221.1	99.5	85.2	14.31	6.953	
3,400.0	3,395.7	3,395.7	3,385.1	7.7	8.4	6.83	-1.6	-231.4	103.1	88.3	14.77	6.980	
3,500.0	3,495.4	3,495.7	3,484.5	8.0	8.7	6.88	-1.7	-241.8	106.6	91.4	15.22	7.004	
3,600.0	3,595.2	3,595.6	3,583.9	8.2	9.0	6.92	-1.8	-252.1	110.2	94.5	15.68	7.027	
3,700.0	3,695.0	3,695.5	3,683.3	8.5	9.2	6.96	-1.9	-262.4	113.7	97.6	16.14	7.049	
3,800.0	3,794.7	3,795.5	3,782.7	8.7	9.5	6.99	-2.0	-272.7	117.3	100.7	16.60	7.069	
3,810.5	3,805.2	3,806.0	3,793.1	8.7	9.6	6.99	-2.1	-273.8	117.7	101.0	16.64	7.071	
3,900.0	3,894.6	3,895.4	3,882.0	8.9	9.8	6.96	-2.2	-283.0	122.3	105.2	17.03	7.177	
4,005.4	4,000.0	4,000.4	3,986.5	9.1	10.1	-86.69	-2.3	-293.9	131.2	113.7	17.46	7.515	
4,100.0	4,094.6	4,094.5	4,080.0	9.3	10.4	-86.97	-2.4	-303.6	140.9	123.1	17.86	7.890	
4,200.0	4,194.6	4,193.9	4,179.0	9.5	10.7	-87.22	-2.5	-313.9	151.3	132.9	18.30	8.264	
4,300.0	4,294.6	4,293.4	4,277.9	9.7	11.0	-87.43	-2.6	-324.1	161.6	142.8	18.74	8.620	
4,400.0	4,394.6	4,392.9	4,376.8	9.9	11.3	-87.63	-2.7	-334.4	171.9	152.7	19.18	8.959	
4,500.0	4,494.6	4,492.3	4,475.8	10.1	11.6	-87.80	-2.8	-344.7	182.2	162.6	19.63	9.282	
4,600.0	4,594.6	4,591.8	4,574.7	10.3	11.9	-87.95	-2.9	-355.0	192.5	172.4	20.07	9.591	
4,700.0	4,694.6	4,691.3	4,673.6	10.5	12.2	-88.09	-3.1	-365.2	202.8	182.3	20.51	9.886	
4,800.0	4,794.6	4,796.2	4,778.2	10.8	12.4	-88.20	-3.2	-375.1	212.2	191.3	20.95	10.129	
4,900.0	4,894.6	4,904.2	4,885.9	11.0	12.7	-88.27	-3.2	-381.4	218.1	196.7	21.37	10.208	

CC - Min centre to center distance or convergent point, SF - min separation factor, ES - min ellipse separation

Company:	Synergy Resources	Local Co-ordinate Reference:	Well SRC Gies D-15-22NCHZ
Project:	SEC.15-T7N-R65W	TVD Reference:	WELL @ 4851.0ft (RKB - 13')
Reference Site:	SRC Gies Pad Sec.15-T7N-R65W	MD Reference:	WELL @ 4851.0ft (RKB - 13')
Site Error:	0.0ft	North Reference:	True
Reference Well:	SRC Gies D-15-22NCHZ	Survey Calculation Method:	Minimum Curvature
Well Error:	0.0ft	Output errors are at	2.00 sigma
Reference Wellbore	Wellbore #1	Database:	Landmark
Reference Design:	Plan #2 (10-01-14)	Offset TVD Reference:	Offset Datum

Offset Design													Offset Site Error:	0.0 ft
Survey Program: 0-MWD													Offset Well Error:	0.0 ft
Reference		Offset		Semi Major Axis			Distance							Warning
Measured Depth (ft)	Vertical Depth (ft)	Measured Depth (ft)	Vertical Depth (ft)	Reference (ft)	Offset (ft)	Highside Toolface (°)	Offset Wellbore Centre +N/-S (ft)	+E/-W (ft)	Between Centres (ft)	Between Ellipses (ft)	Minimum Separation (ft)	Separation Factor		
5,000.0	4,994.6	5,012.4	4,994.1	11.2	12.8	-88.30	-3.3	-383.7	220.2	198.4	21.77	10.112		
5,100.0	5,094.6	5,112.9	5,094.6	11.4	13.0	-88.30	-3.3	-383.7	220.2	198.0	22.19	9.925		
5,200.0	5,194.6	5,212.9	5,194.6	11.6	13.2	-88.30	-3.3	-383.7	220.2	197.6	22.61	9.741		
5,300.0	5,294.6	5,312.9	5,294.6	11.8	13.4	-88.30	-3.3	-383.7	220.2	197.2	23.03	9.563		
5,400.0	5,394.6	5,412.9	5,394.6	12.0	13.6	-88.30	-3.3	-383.7	220.2	196.8	23.45	9.391		
5,500.0	5,494.6	5,512.9	5,494.6	12.2	13.7	-88.30	-3.3	-383.7	220.2	196.3	23.87	9.225		
5,600.0	5,594.6	5,612.9	5,594.6	12.4	13.9	-88.30	-3.3	-383.7	220.2	195.9	24.29	9.065		
5,700.0	5,694.6	5,712.9	5,694.6	12.6	14.1	-88.30	-3.3	-383.7	220.2	195.5	24.72	8.909		
5,800.0	5,794.6	5,812.9	5,794.6	12.9	14.3	-88.30	-3.3	-383.7	220.2	195.1	25.14	8.759		
5,900.0	5,894.6	5,912.9	5,894.6	13.1	14.5	-88.30	-3.3	-383.7	220.2	194.6	25.57	8.613		
6,000.0	5,994.6	6,012.9	5,994.6	13.3	14.7	-88.30	-3.3	-383.7	220.2	194.2	25.99	8.471		
6,100.0	6,094.6	6,112.9	6,094.6	13.5	14.9	-88.30	-3.3	-383.7	220.2	193.8	26.42	8.334		
6,200.0	6,194.6	6,212.9	6,194.6	13.7	15.1	-88.30	-3.3	-383.7	220.2	193.4	26.85	8.201		
6,300.0	6,294.6	6,312.9	6,294.6	13.9	15.3	-88.30	-3.3	-383.7	220.2	192.9	27.28	8.072		
6,400.0	6,394.6	6,412.9	6,394.6	14.1	15.4	-88.30	-3.3	-383.7	220.2	192.5	27.71	7.947		
6,500.0	6,494.6	6,512.9	6,494.6	14.4	15.6	-88.30	-3.3	-383.7	220.2	192.1	28.14	7.826		
6,600.0	6,594.6	6,613.4	6,595.0	14.6	15.8	-89.22	-6.8	-383.7	220.1	191.6	28.55	7.710		
6,631.9	6,626.4	6,645.1	6,626.4	14.6	15.9	-90.22	-10.7	-383.7	220.1	191.4	28.67	7.676		
6,700.0	6,694.6	6,711.4	6,691.6	14.8	16.0	-93.48	-23.2	-383.6	220.5	191.5	28.93	7.620		
6,799.2	6,793.8	6,802.8	6,778.7	15.0	16.2	-100.40	-50.2	-383.5	224.1	194.8	29.31	7.645		
6,850.0	6,844.5	6,847.1	6,819.7	15.1	16.3	75.62	-67.2	-383.5	228.2	198.6	29.52	7.728		
6,900.0	6,894.2	6,890.0	6,858.2	15.2	16.4	71.70	-86.1	-383.4	233.3	203.6	29.71	7.852		
6,950.0	6,943.5	6,932.1	6,894.8	15.3	16.5	68.03	-106.8	-383.3	239.3	209.4	29.87	8.011		
7,000.0	6,992.0	6,973.5	6,929.6	15.4	16.6	64.61	-129.3	-383.2	246.1	216.1	29.99	8.205		
7,050.0	7,039.5	7,014.3	6,962.5	15.5	16.7	61.47	-153.4	-383.1	253.4	223.3	30.05	8.432		
7,100.0	7,085.8	7,054.6	6,993.6	15.6	16.8	58.58	-178.9	-383.0	261.1	231.0	30.05	8.689		
7,150.0	7,130.7	7,094.3	7,022.9	15.7	16.9	55.96	-205.8	-382.9	269.0	239.0	29.98	8.972		
7,200.0	7,174.0	7,133.6	7,050.3	15.8	17.1	53.59	-233.9	-382.8	277.0	247.1	29.86	9.278		
7,250.0	7,215.4	7,172.5	7,075.9	16.0	17.3	51.45	-263.2	-382.7	284.9	255.3	29.68	9.602		
7,300.0	7,254.8	7,210.9	7,099.6	16.1	17.4	49.53	-293.5	-382.6	292.7	263.3	29.45	9.939		
7,350.0	7,291.9	7,250.0	7,121.9	16.3	17.6	47.79	-325.5	-382.5	300.2	271.0	29.20	10.282		
7,400.0	7,326.6	7,286.9	7,141.4	16.5	17.9	46.29	-356.9	-382.3	307.4	278.5	28.95	10.620		
7,450.0	7,358.6	7,324.5	7,159.6	16.8	18.1	44.95	-389.7	-382.2	314.2	285.5	28.71	10.944		
7,500.0	7,388.0	7,361.8	7,175.9	17.1	18.4	43.77	-423.3	-382.1	320.4	291.9	28.50	11.243		
7,550.0	7,414.4	7,400.0	7,190.8	17.4	18.7	42.72	-458.5	-381.9	326.2	297.8	28.35	11.504		
7,600.0	7,437.9	7,435.8	7,203.0	17.8	19.0	41.86	-492.2	-381.8	331.3	303.0	28.29	11.713		
7,650.0	7,458.1	7,472.6	7,213.7	18.2	19.4	41.11	-527.3	-381.7	335.8	307.5	28.32	11.857		
7,700.0	7,475.2	7,509.2	7,222.7	18.7	19.7	40.49	-562.9	-381.5	339.7	311.2	28.48	11.928		
7,750.0	7,488.9	7,550.0	7,230.4	19.2	20.2	39.96	-602.9	-381.4	342.9	314.1	28.79	11.911		
7,800.0	7,499.3	7,582.2	7,235.0	19.7	20.5	39.62	-634.7	-381.2	345.3	316.1	29.21	11.823		
7,850.0	7,506.2	7,618.5	7,238.4	20.3	20.9	39.36	-670.9	-381.1	347.1	317.3	29.80	11.647		
7,900.0	7,509.6	7,654.9	7,239.9	20.9	21.4	39.21	-707.2	-381.0	348.1	317.5	30.54	11.397		
7,924.2	7,510.0	7,674.5	7,240.0	21.2	21.6	39.18	-726.8	-380.9	348.3	317.3	30.97	11.244		
7,925.0	7,510.0	7,675.3	7,240.0	21.2	21.6	39.18	-727.7	-380.9	348.3	317.3	30.99	11.239		
8,000.0	7,510.0	7,750.3	7,240.0	22.1	22.6	39.18	-802.6	-380.6	348.3	316.0	32.30	10.784		
8,100.0	7,510.0	7,850.3	7,240.0	23.5	23.9	39.17	-902.6	-380.2	348.3	314.1	34.14	10.201		
8,200.0	7,510.0	7,950.3	7,240.0	24.9	25.3	39.17	-1,002.6	-379.8	348.3	312.2	36.09	9.650		
8,300.0	7,510.0	8,050.3	7,240.0	26.4	26.8	39.17	-1,102.6	-379.4	348.3	310.1	38.13	9.134		
8,400.0	7,510.0	8,150.3	7,240.0	27.9	28.3	39.17	-1,202.6	-379.0	348.3	308.0	40.24	8.654		
8,500.0	7,510.0	8,250.3	7,240.0	29.5	29.9	39.17	-1,302.6	-378.7	348.3	305.8	42.42	8.209		
8,600.0	7,510.0	8,350.3	7,240.0	31.1	31.5	39.17	-1,402.6	-378.3	348.3	303.6	44.66	7.799		
8,700.0	7,510.0	8,450.3	7,240.0	32.8	33.2	39.17	-1,502.6	-377.9	348.3	301.3	46.94	7.420		

CC - Min centre to center distance or convergent point, SF - min separation factor, ES - min ellipse separation

Company:	Synergy Resources	Local Co-ordinate Reference:	Well SRC Gies D-15-22NCHZ
Project:	SEC.15-T7N-R65W	TVD Reference:	WELL @ 4851.0ft (RKB - 13')
Reference Site:	SRC Gies Pad Sec.15-T7N-R65W	MD Reference:	WELL @ 4851.0ft (RKB - 13')
Site Error:	0.0ft	North Reference:	True
Reference Well:	SRC Gies D-15-22NCHZ	Survey Calculation Method:	Minimum Curvature
Well Error:	0.0ft	Output errors are at	2.00 sigma
Reference Wellbore	Wellbore #1	Database:	Landmark
Reference Design:	Plan #2 (10-01-14)	Offset TVD Reference:	Offset Datum

Offset Design SRC Gies Pad Sec.15-T7N-R65W - SRC Gies T-15-22NHZ - Wellbore #1 - Plan #1 (5-7-14)												Offset Site Error:	0.0 ft
Survey Program: 0-MWD												Offset Well Error:	0.0 ft
Reference		Offset		Semi Major Axis			Distance						Warning
Measured Depth (ft)	Vertical Depth (ft)	Measured Depth (ft)	Vertical Depth (ft)	Reference (ft)	Offset (ft)	Highside Toolface (°)	Offset Wellbore Centre +N/-S (ft)	+E/-W (ft)	Between Centres (ft)	Between Ellipses (ft)	Minimum Separation (ft)	Separation Factor	
8,800.0	7,510.0	8,550.3	7,240.0	34.5	34.8	39.17	-1,602.6	-377.5	348.3	299.0	49.26	7.070	
8,900.0	7,510.0	8,650.3	7,240.0	36.2	36.5	39.17	-1,702.6	-377.1	348.2	296.6	51.61	6.747	
9,000.0	7,510.0	8,750.3	7,240.0	37.9	38.3	39.17	-1,802.6	-376.7	348.2	294.2	54.00	6.449	
9,100.0	7,510.0	8,850.3	7,240.0	39.7	40.0	39.16	-1,902.6	-376.3	348.2	291.8	56.41	6.173	
9,200.0	7,510.0	8,950.3	7,240.0	41.4	41.8	39.16	-2,002.6	-375.9	348.2	289.4	58.85	5.917	
9,300.0	7,510.0	9,050.3	7,240.0	43.2	43.5	39.16	-2,102.6	-375.5	348.2	286.9	61.30	5.680	
9,400.0	7,510.0	9,150.3	7,240.0	45.0	45.3	39.16	-2,202.6	-375.2	348.2	284.4	63.78	5.460	
9,500.0	7,510.0	9,250.3	7,240.0	46.8	47.1	39.16	-2,302.6	-374.8	348.2	281.9	66.27	5.255	
9,600.0	7,510.0	9,350.3	7,240.0	48.6	48.9	39.16	-2,402.6	-374.4	348.2	279.4	68.78	5.063	
9,700.0	7,510.0	9,450.3	7,240.0	50.4	50.7	39.16	-2,502.6	-374.0	348.2	276.9	71.29	4.884	
9,800.0	7,510.0	9,550.3	7,240.0	52.3	52.5	39.16	-2,602.6	-373.6	348.2	274.4	73.82	4.717	
9,900.0	7,510.0	9,650.3	7,240.0	54.1	54.4	39.16	-2,702.6	-373.2	348.2	271.8	76.36	4.560	
10,000.0	7,510.0	9,750.3	7,240.0	55.9	56.2	39.16	-2,802.6	-372.8	348.2	269.3	78.91	4.413	
10,100.0	7,510.0	9,850.3	7,240.0	57.8	58.1	39.15	-2,902.6	-372.4	348.2	266.7	81.47	4.274	
10,200.0	7,510.0	9,950.3	7,240.0	59.6	59.9	39.15	-3,002.6	-372.0	348.2	264.2	84.03	4.143	
10,300.0	7,510.0	10,050.3	7,240.0	61.5	61.8	39.15	-3,102.6	-371.7	348.2	261.6	86.60	4.020	
10,400.0	7,510.0	10,150.3	7,240.0	63.3	63.6	39.15	-3,202.6	-371.3	348.2	259.0	89.18	3.904	
10,500.0	7,510.0	10,250.3	7,240.0	65.2	65.5	39.15	-3,302.6	-370.9	348.2	256.4	91.77	3.794	
10,600.0	7,510.0	10,350.3	7,240.0	67.1	67.3	39.15	-3,402.6	-370.5	348.2	253.8	94.36	3.690	
10,700.0	7,510.0	10,450.3	7,240.0	68.9	69.2	39.15	-3,502.6	-370.1	348.2	251.2	96.95	3.591	
10,800.0	7,510.0	10,550.3	7,240.0	70.8	71.1	39.15	-3,602.6	-369.7	348.2	248.6	99.55	3.497	
10,900.0	7,510.0	10,650.3	7,240.0	72.7	72.9	39.15	-3,702.6	-369.3	348.1	246.0	102.15	3.408	
11,000.0	7,510.0	10,750.3	7,240.0	74.6	74.8	39.15	-3,802.6	-368.9	348.1	243.4	104.76	3.323	
11,100.0	7,510.0	10,850.3	7,240.0	76.4	76.7	39.14	-3,902.6	-368.5	348.1	240.8	107.37	3.242	
11,200.0	7,510.0	10,950.3	7,240.0	78.3	78.6	39.14	-4,002.6	-368.2	348.1	238.2	109.98	3.165	
11,300.0	7,510.0	11,050.3	7,240.0	80.2	80.5	39.14	-4,102.6	-367.8	348.1	235.5	112.60	3.092	
11,400.0	7,510.0	11,150.3	7,240.0	82.1	82.3	39.14	-4,202.6	-367.4	348.1	232.9	115.22	3.021	
11,500.0	7,510.0	11,250.3	7,240.0	84.0	84.2	39.14	-4,302.6	-367.0	348.1	230.3	117.84	2.954	
11,600.0	7,510.0	11,350.3	7,240.0	85.9	86.1	39.14	-4,402.6	-366.6	348.1	227.6	120.46	2.890	
11,700.0	7,510.0	11,450.3	7,240.0	87.8	88.0	39.14	-4,502.6	-366.2	348.1	225.0	123.09	2.828	
11,713.6	7,510.0	11,463.8	7,240.0	88.0	88.3	39.14	-4,516.1	-366.2	348.1	224.7	123.45	2.820	
11,715.1	7,510.0	11,463.8	7,240.0	88.1	88.3	39.14	-4,516.1	-366.2	348.1	224.6	123.47	2.819 SF	

Reference Depths are relative to WELL @ 4851.0ft (RKB - 13')	Coordinates are relative to: SRC Gies D-15-22NCHZ
Offset Depths are relative to Offset Datum	Coordinate System is US State Plane 1983, Colorado Northern Zone
Central Meridian is -105.500000 °	Grid Convergence at Surface is: 0.55°



Coordinates are relative to: SRC Gies D-15-22NCHZ
Coordinate System is US State Plane 1983, Colorado Northern Zone
Grid Convergence at Surface is: 0.55°

