



Rico LC29-76-1HNA

TVD
1" : 100'

Company: NOBLE ENERGY
Well Name: RICO LC29-76-1HNA
API: 05-123-38776
Rig Id: H&P 326
State: CO
County/Parish: WELD COUNTY
Country: USA
Survey Company: DrilTech L.L.C.
Job number: 2014-200-DCDT-CO

Log measurements:
Depth measured from: 641
Maximum temperature: 213.1

Depth Date
Start: 641 ft 5/10/14
End: 15506 ft 5/18/14

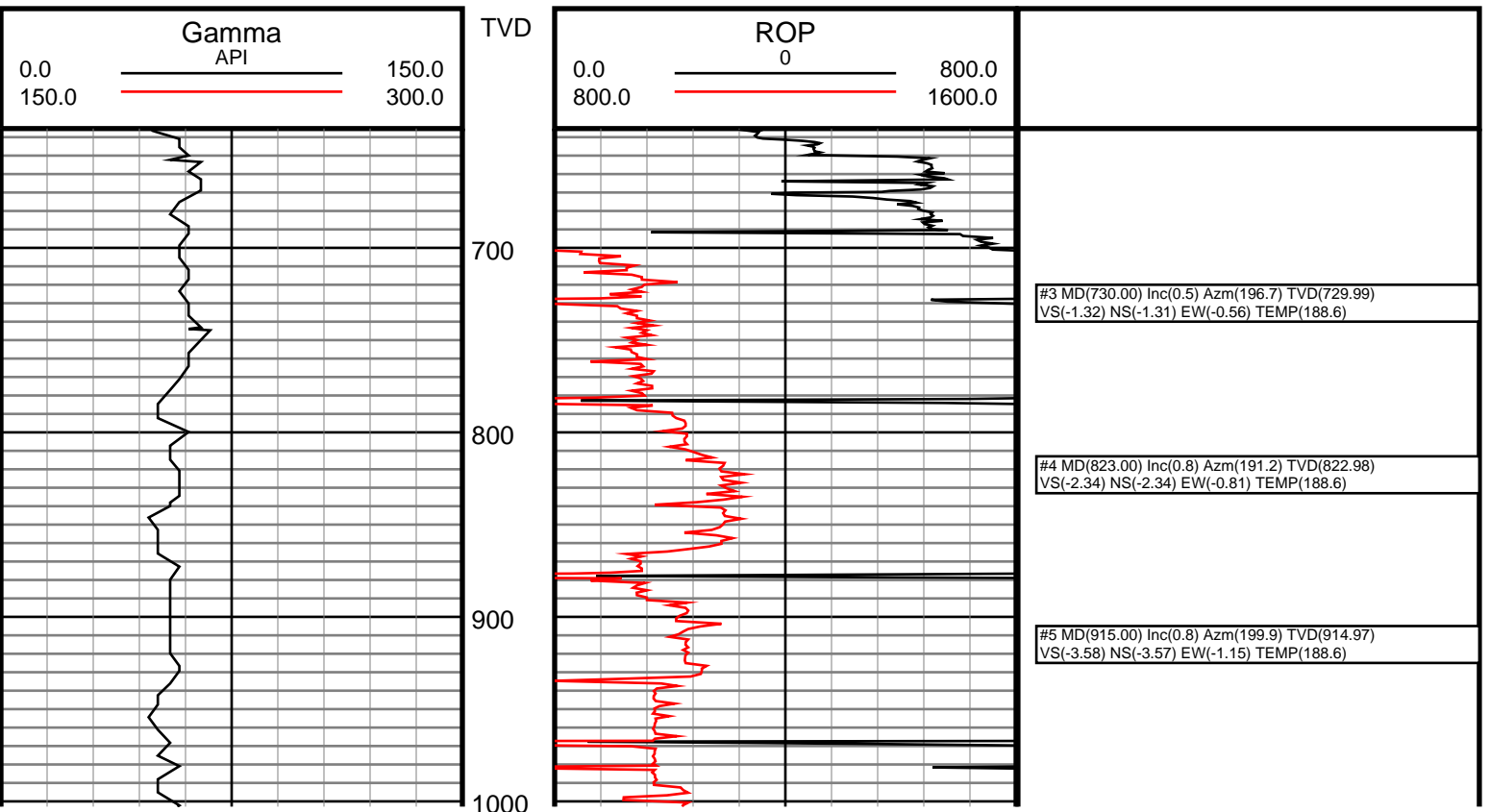
Casing Depth Size
Surface: 636 9 5/8
Intermediate: 6536 7

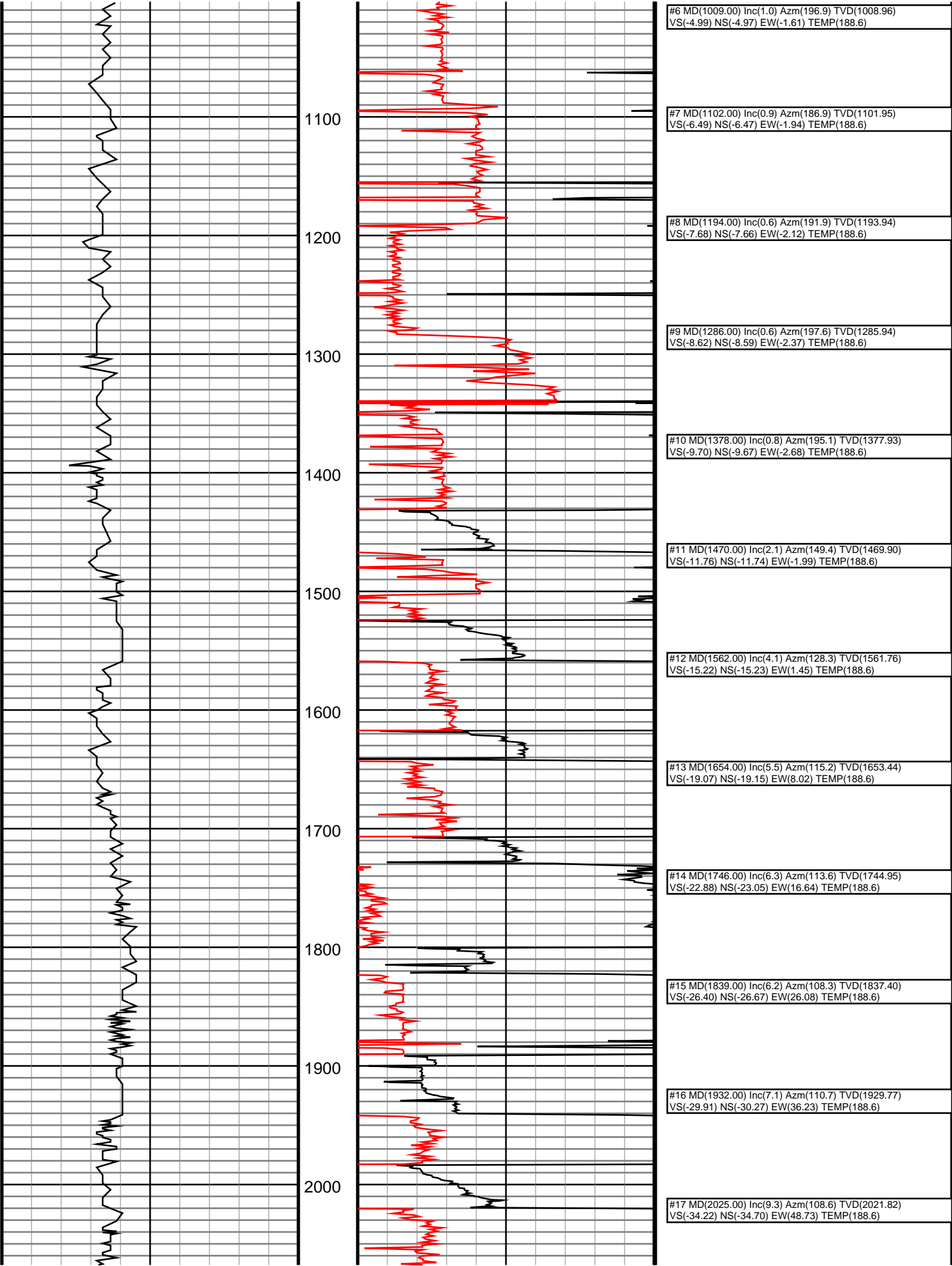
Mud Type: Water Base
Density: 10.15
Viscosity: 42
Rm: Rmf: Rmc:

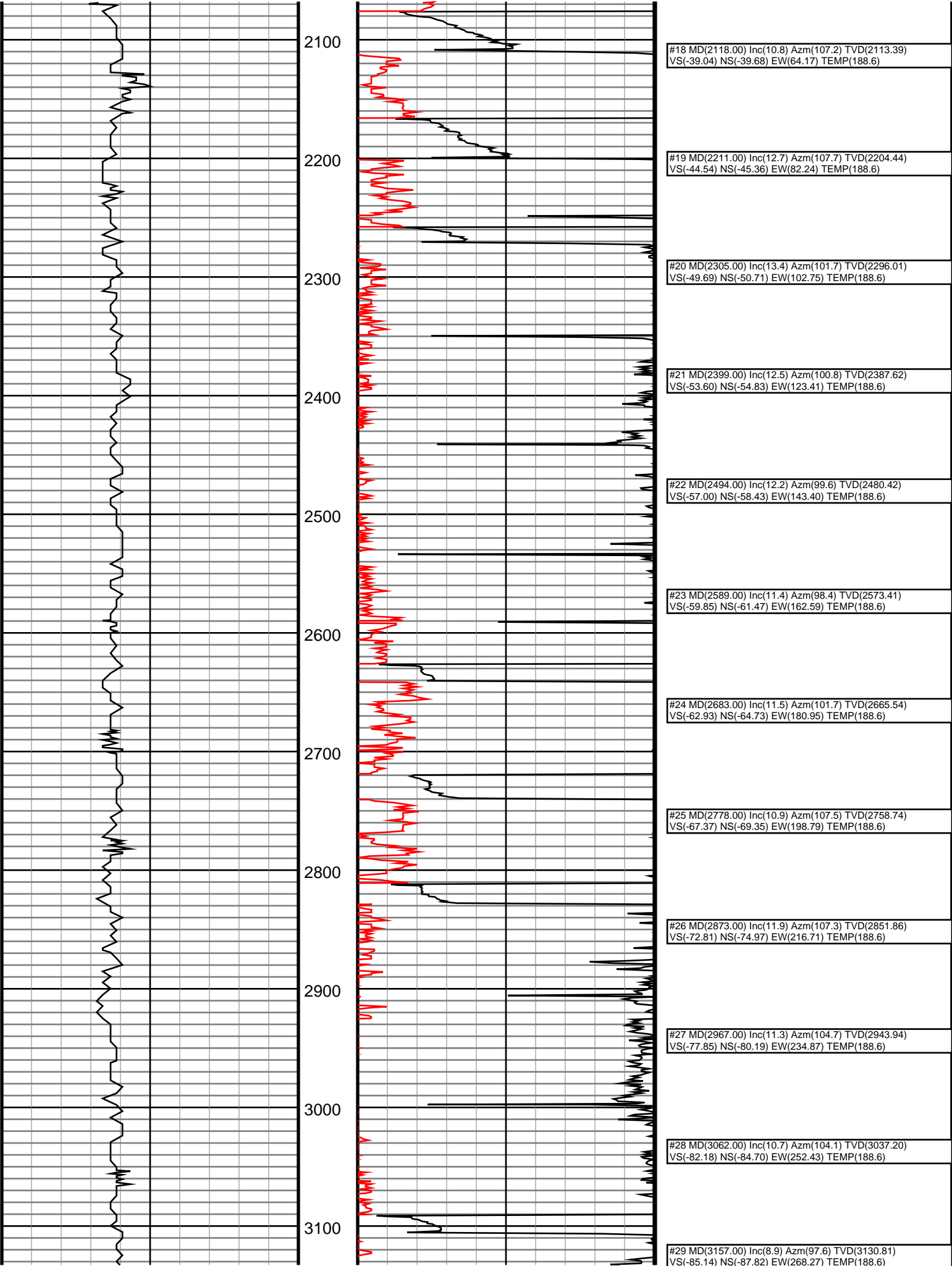
Elevations
KB:
GL:
DF: 30

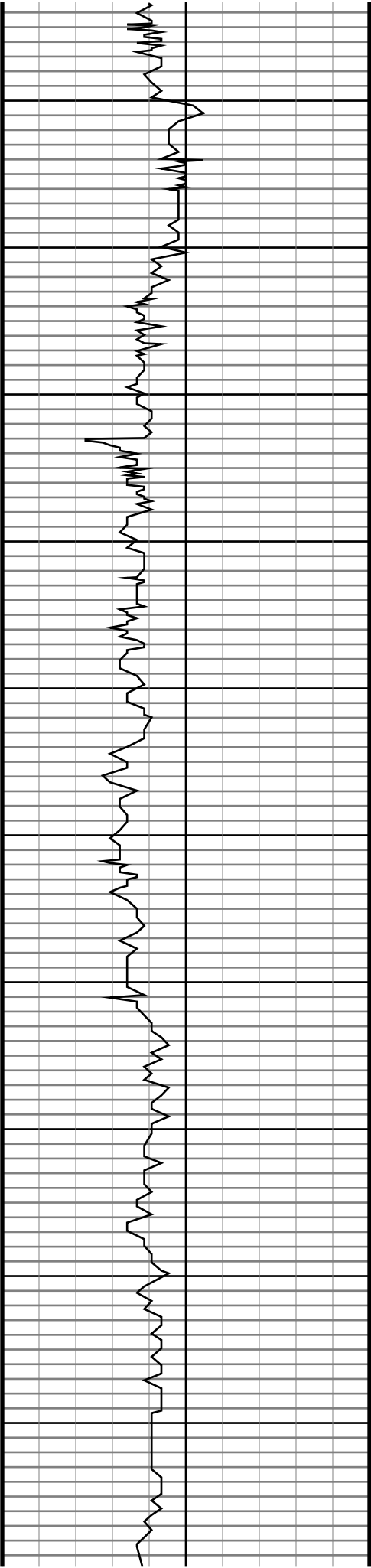
Run	Bit Size	Gamma	Offsets	Survey	Start	End	Start	End	Dates
1	8 3/4	38.08	52.68	631	5366	6546	5/10/14	5/11/14	
2	8 3/4	46.98	61.58	5366	6546	15506	5/11/14	5/12/14	
3	6 1/8	55.40	69.50	6546	15506		5/13/14	5/18/14	
4									
5									
6									
7									
8									
9									
10									

DrilTech L.L.C. uses its best efforts to provide its customers with accurate information and interpretations in conjunction with services performed but will not be held liable or responsible for the accuracy of such information or interpretation.









3200

3300

3400

3500

3600

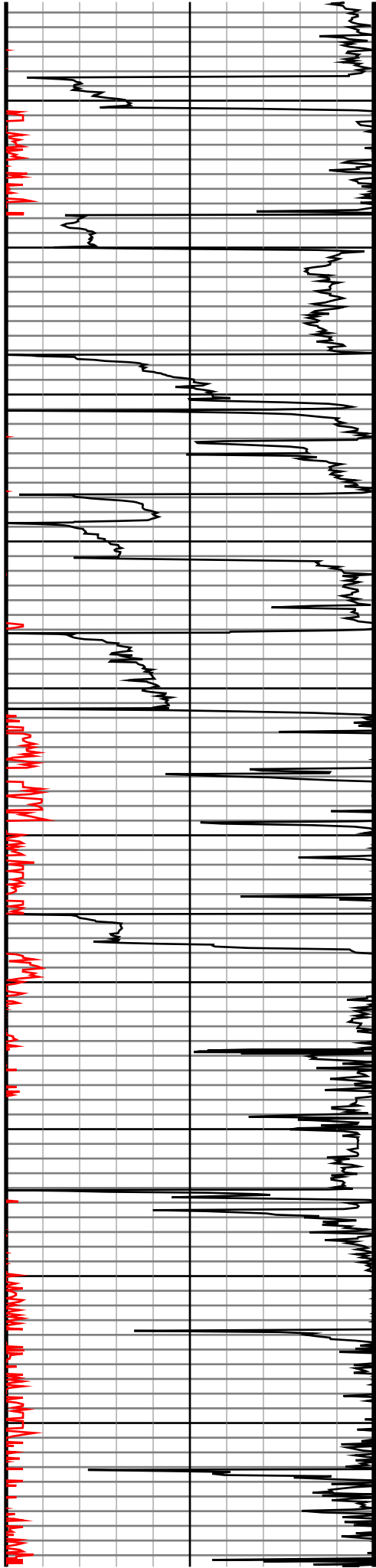
3700

3800

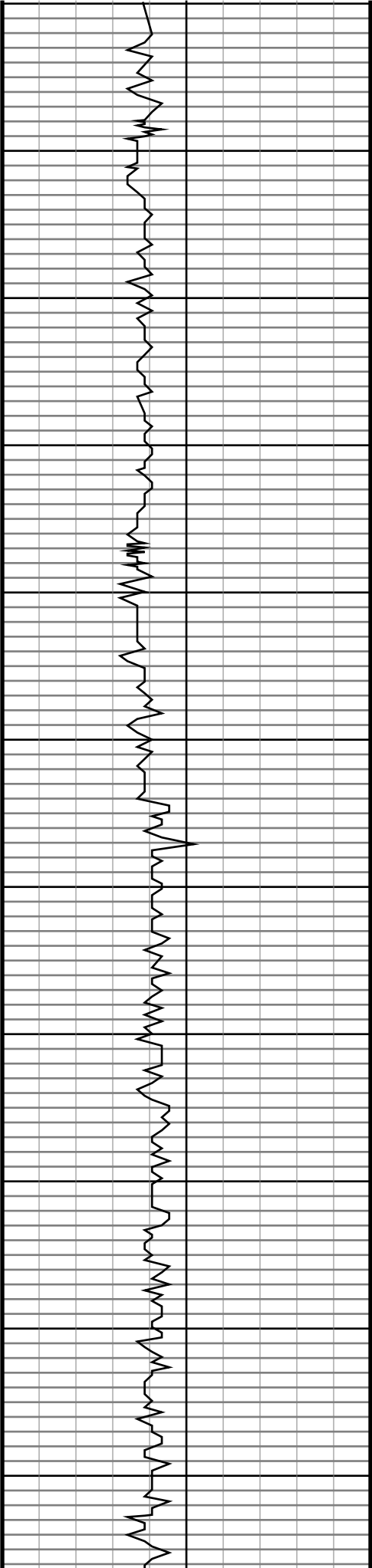
3900

4000

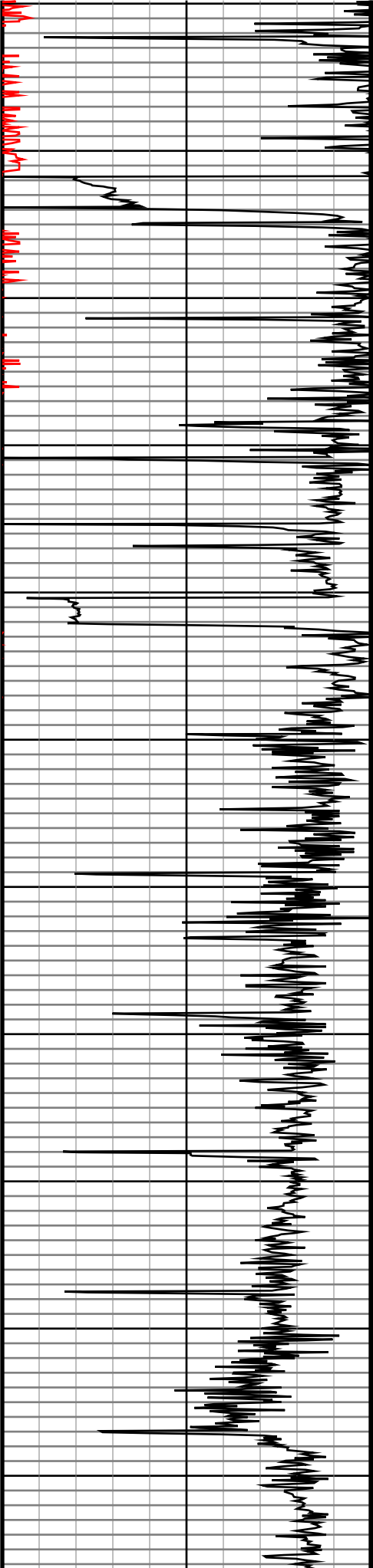
4100



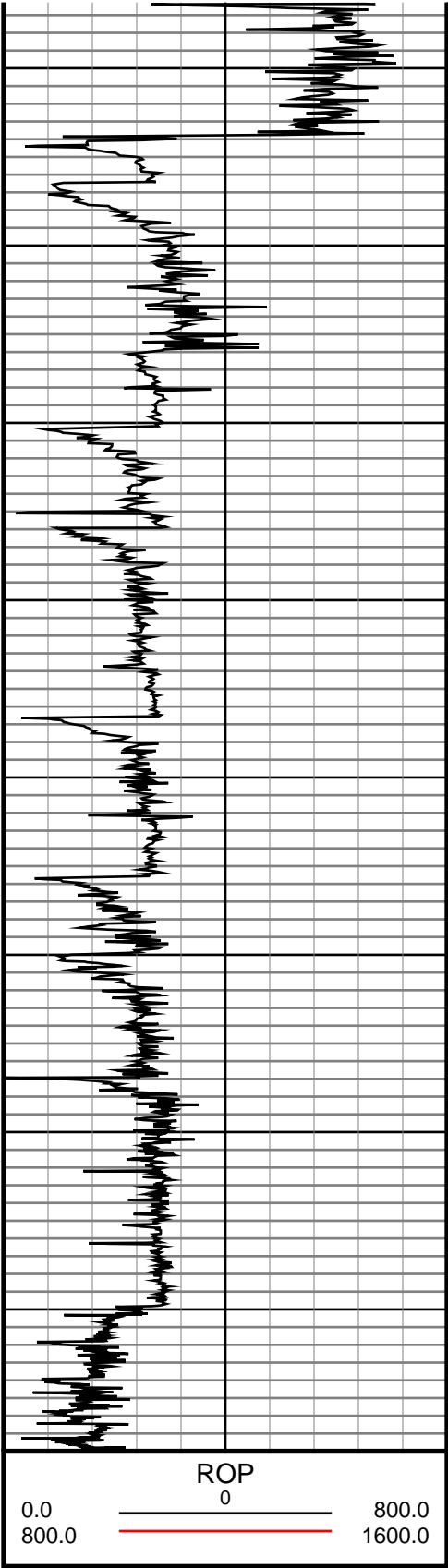
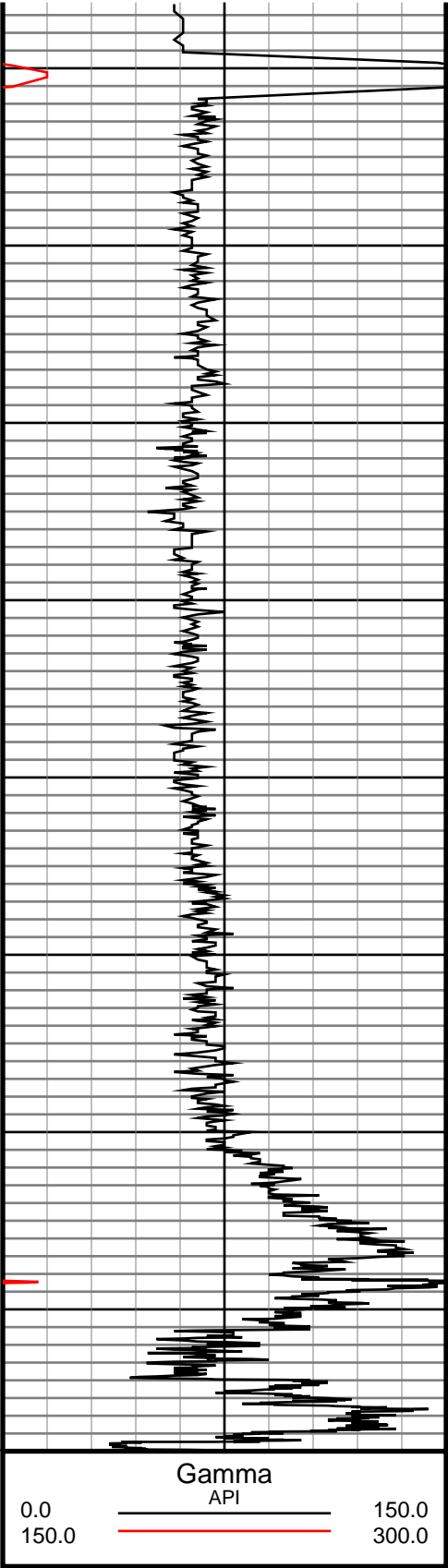
#30 MD(3252.00) Inc(6.2) Azm(91.3) TVD(3224.98) VS(-86.11) NS(-88.91) EW(280.68) TEMP(188.6)
#31 MD(3347.00) Inc(5.0) Azm(85.4) TVD(3319.52) VS(-85.80) NS(-88.69) EW(289.94) TEMP(188.6)
#32 MD(3441.00) Inc(4.1) Azm(92.3) TVD(3413.23) VS(-85.53) NS(-88.50) EW(297.38) TEMP(188.6)
#33 MD(3536.00) Inc(3.2) Azm(90.2) TVD(3508.03) VS(-85.62) NS(-88.64) EW(303.43) TEMP(188.6)
#34 MD(3630.00) Inc(1.5) Azm(121.8) TVD(3601.95) VS(-86.24) NS(-89.30) EW(307.10) TEMP(188.6)
#35 MD(3725.00) Inc(1.3) Azm(127.6) TVD(3696.93) VS(-87.53) NS(-90.61) EW(309.01) TEMP(188.6)
#36 MD(3819.00) Inc(0.6) Azm(230.7) TVD(3790.92) VS(-88.49) NS(-91.57) EW(309.47) TEMP(188.6)
#37 MD(3914.00) Inc(1.0) Azm(242.3) TVD(3885.91) VS(-89.20) NS(-92.27) EW(308.35) TEMP(188.6)
#38 MD(4008.00) Inc(0.7) Azm(248.3) TVD(3979.90) VS(-89.81) NS(-92.87) EW(307.09) TEMP(188.6)
#39 MD(4102.00) Inc(0.4) Azm(229.4) TVD(4073.89) VS(-90.24) NS(-93.29) EW(306.31) TEMP(188.6)
#40 MD(4197.00) Inc(0.3) Azm(295.0) TVD(4168.89) VS(-90.36) NS(-93.40) EW(305.83) TEMP(188.6)



4200
4300
4400
4500
4600
4700
4800
4900
5000
5100
5200



#41 MD(4291.00) Inc(0.5) Azm(98.4) TVD(4262.89) VS(-90.31) NS(-93.36) EW(306.01) TEMP(188.6)
#42 MD(4386.00) Inc(1.1) Azm(276.4) TVD(4357.89) VS(-90.28) NS(-93.32) EW(305.52) TEMP(188.6)
#43 MD(4480.00) Inc(1.8) Azm(264.1) TVD(4451.86) VS(-90.35) NS(-93.37) EW(303.15) TEMP(188.6)
#44 MD(4575.00) Inc(1.7) Azm(272.4) TVD(4546.81) VS(-90.47) NS(-93.47) EW(300.26) TEMP(188.6)
#45 MD(4669.00) Inc(1.8) Azm(242.3) TVD(4640.77) VS(-91.13) NS(-94.09) EW(297.56) TEMP(188.6)
#46 MD(4764.00) Inc(2.0) Azm(230.8) TVD(4735.72) VS(-92.90) NS(-95.83) EW(294.96) TEMP(188.6)
#47 MD(4858.00) Inc(1.9) Azm(220.1) TVD(4829.66) VS(-95.15) NS(-98.06) EW(292.68) TEMP(188.6)
#48 MD(4953.00) Inc(1.4) Azm(193.2) TVD(4924.63) VS(-97.49) NS(-100.40) EW(291.40) TEMP(188.6)
#49 MD(5047.00) Inc(1.0) Azm(199.5) TVD(5018.61) VS(-99.39) NS(-102.29) EW(290.86) TEMP(188.6)
#50 MD(5142.00) Inc(0.7) Azm(199.9) TVD(5113.59) VS(-100.72) NS(-103.62) EW(290.39) TEMP(188.6)
#51 MD(5237.00) Inc(0.1) Azm(65.9) TVD(5208.59) VS(-101.23) NS(-104.13) EW(290.27) TEMP(188.6)



#52 MD(5329.00) Inc(0.4) Azm(34.7) TVD(5300.59)
VS(-100.94) NS(-103.83) EW(290.52) TEMP(188.6)

#53 MD(5423.00) Inc(4.7) Azm(329.5) TVD(5394.48)
VS(-97.36) NS(-100.24) EW(288.76) TEMP(188.6)

#54 MD(5517.00) Inc(11.9) Azm(347.6) TVD(5487.45)
VS(-84.60) NS(-87.44) EW(284.71) TEMP(188.6)

#55 MD(5612.00) Inc(19.7) Azm(8.7) TVD(5578.86)
VS(-59.15) NS(-61.99) EW(285.03) TEMP(188.6)

#56 MD(5707.00) Inc(28.3) Azm(10.2) TVD(5665.57)
VS(-21.02) NS(-23.92) EW(291.46) TEMP(119.1)

#57 MD(5801.00) Inc(32.8) Azm(359.4) TVD(5746.56)
VS(26.46) NS(23.53) EW(295.14) TEMP(119.1)

#58 MD(5896.00) Inc(39.9) Azm(349.8) TVD(5823.09)
VS(82.24) NS(79.36) EW(289.46) TEMP(126.3)

#59 MD(5991.00) Inc(54.8) Azm(350.8) TVD(5887.27)
VS(150.81) NS(148.05) EW(277.80) TEMP(129.9)

#60 MD(6085.00) Inc(65.0) Azm(351.0) TVD(5934.35)
VS(230.87) NS(228.25) EW(264.96) TEMP(133.6)

#61 MD(6180.00) Inc(64.8) Azm(350.1) TVD(5974.65)
VS(315.59) NS(313.11) EW(250.83) TEMP(137.2)

#62 MD(6274.00) Inc(64.9) Azm(349.6) TVD(6014.60)
VS(399.19) NS(396.86) EW(235.84) TEMP(137.2)

#65 MD(6482.00) Inc(82.2) Azm(1.9) TVD(6072.51)
VS(597.41) NS(595.19) EW(226.45) TEMP(140.8)