

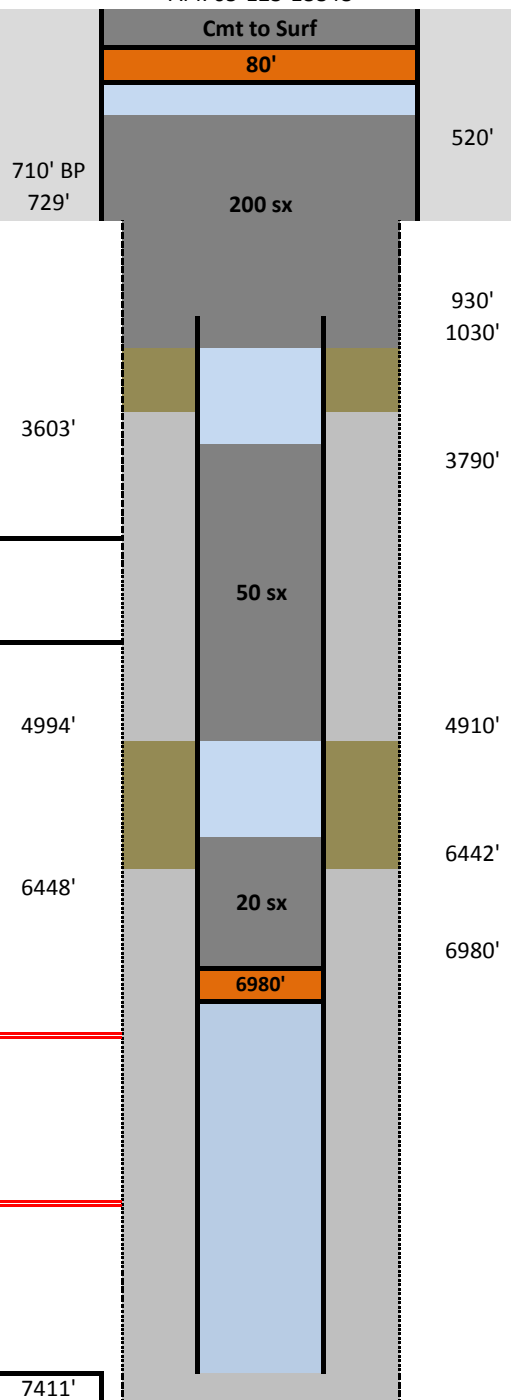
Existing

KB=10'

Proposed

SLIM HOLE: 3 1/2" Production Casing**HSR Rademacher 14-30**

API: 05-123-18848

Surface Casing/Hole:Fox Hills Formation Marker
Casing Size/Depth: 8 5/8, 23#/ft @

520' TOC in surface casing

930' Shoot off Casing
1030' BOC in stub

OH TOC (CBL) 3603'

3790' TOC inside casing

Sussex	No perfs
Top	4029'
Bottom	4757'

50 sx

Shannon	Productive within 1 mile
Base	4710'

OH BOC (CBL) 4994'

4910' BOC inside casing

OH TOC (CBL) 6448'

6442' TOC inside casing

Niobrara Top	6988'
Niobrara Perf	7049' - 7950'

20 sx

6980' BOC inside casing

Codell Re-perf	7265' - 7275'
Codell Perf	7269' - 7274'

Production Casing/Hole

Casing Size/Depth	3 1/2" x 7.7#/ft @	7411'
Hole Size/Depth	7 7/8" @	7416'

Existing Cement

New CIBP

New Cement

Water

Existing Mud

New CICR