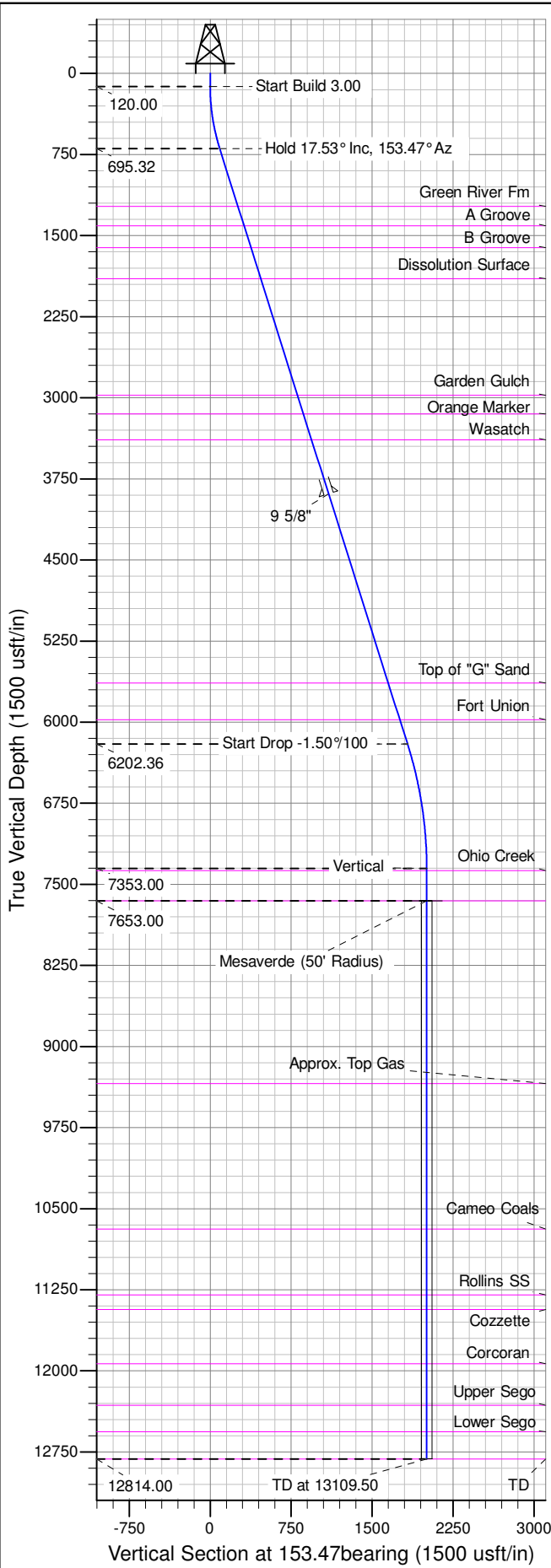
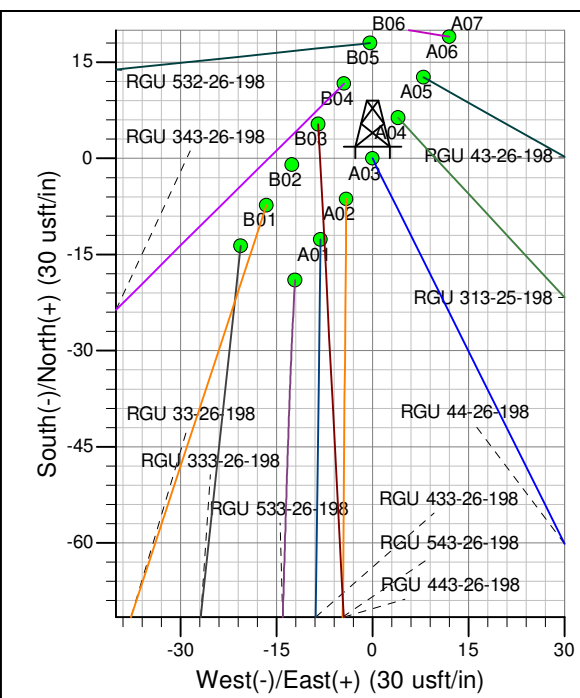
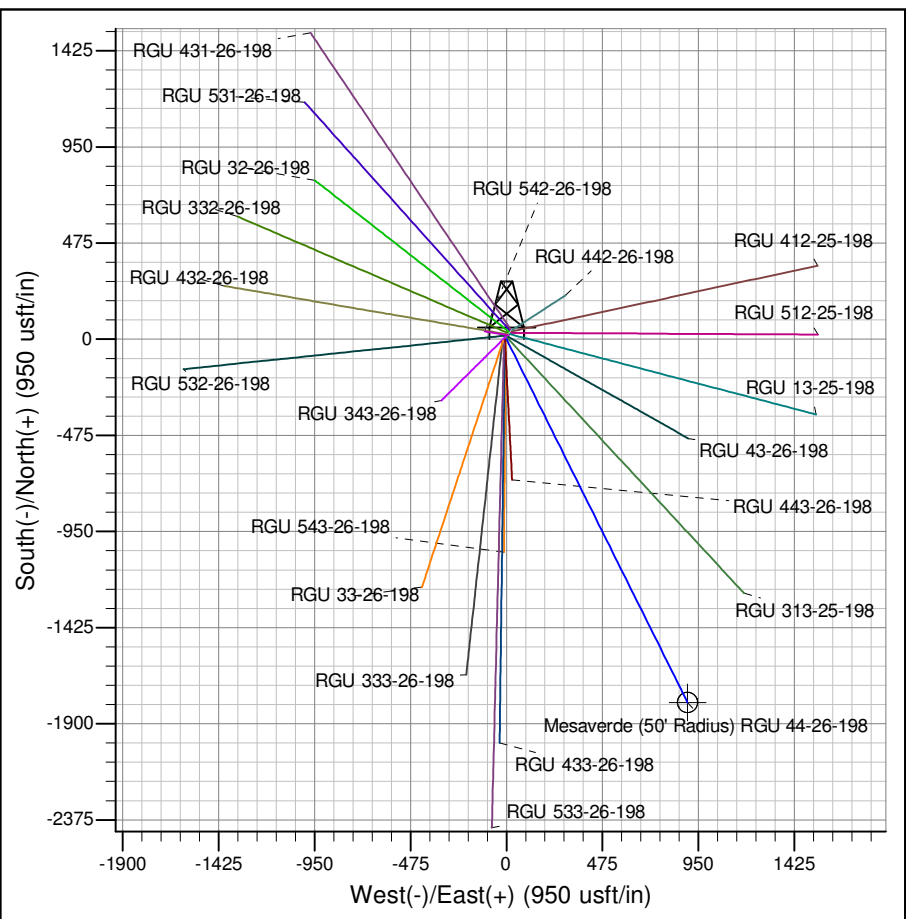




Well Name: RGU 44-26-198
Surface Location: RGU 42-26-198
North American Datum 1983 , US State Plane 1983 , Colorado Central Zone
Ground Elevation: 6622.00
+N/-S +E/-W Northing Easting Latitude Longitude Slot
0.00 0.00 1778072.90000 2199594.40000 39.93510 -108.35458 A04
KELLY BUSHING @ 6643.00usft (Cyclone 29 (21' RKB) kjs)



ANNOTATIONS									
TVD	MD	Inc	Azi	+N/-S	+E/-W	Vsect	Departure	Annotation	
120.00	120.00	0.00	0.00	0.00	0.00	0.00	0.00	Start Build 3.00	
695.32	704.40	17.53	153.47	-79.37	39.63	88.71	88.71	Hold 17.53° Inc, 153.47° Az	
6202.36	6479.70	17.53	153.47	-1635.89	816.77	1828.46	1828.46	Start Drop -1.50%100	
7353.00	7648.50	0.00	0.00	-1794.64	896.02	2005.89	2005.89	Vertical	
7653.00	7948.50	0.00	0.00	-1794.64	896.02	2005.89	2005.89	Mesaverde	
12814.00	13109.50	0.00	0.00	-1794.64	896.02	2005.89	2005.89	TD at 13109.50	



Azimuths to True North
Magnetic North: 10.36°

Magnetic Field
Strength: 52273.6snT
Dip Angle: 65.99°
Date: 1/24/2013
Model: IGRF2010

Project: RG 26-01S-098W
Site: RGU 42-26-198
Well: RGU 44-26-198
Design #2 12Aug14 mab