

1801 Broadway
Suite 500
Denver, Colorado 80202



Callie Fiddes
Regulatory Technician
Tel: 303.398.0550
E-mail: cfiddes@gwogco.com

September 4, 2014

Colorado Oil and Gas Conservation Commission
1120 Lincoln Street, Suite 801
Denver, Colorado 80203

RE: **Proposed Wellbore Spacing Unit**
Kodak South FD 27-259HC

Codell New Drill
Township 6 North, Range 67 West, 6th P.M.
Section 26
Weld County, Colorado

Dear Director:

Great Western Operating Company, LLC is planning to drill the above captioned well in accordance with the provisions of COGCC Rule 318A.e.

Great Western proposed wellbore spacing unit consists of:

- **N2SW Sec 26 N2S2 Sec 27**
- **240 acres**

The 30 day notification time has passed and we have not received any objections to such well locations or proposed spacing unit, therefore Great Western hereby requests the Director to approve the above mentioned well. Great Western Operating Company, LLC respectfully requests that the COGCC review the enclosed map illustrating the proposed wellbore spacing unit.

Respectfully,

Callie Fiddes

Callie Fiddes
Regulatory Technician
Great Western Operating Company, LLC

T6N, R67W, 6th P.M.

GREAT WESTERN OIL & GAS COMPANY

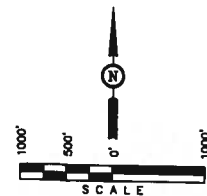
Well location, KODAK SOUTH FD 27-259HC, located as shown in the SE 1/4 SW 1/4 of Section 26, T6N, R67W, 6th P.M., Weld County, Colorado.

BASIS OF ELEVATION

USGS COOPERATIVE BASE NETWORK CONTROL STATION, DESIGNATION 'VERMILYEA'. NGS DATA SHEET LISTS THE NAVD 88 ELEVATION AS BEING 5026 FEET

BASIS OF BEARINGS

BASIS OF BEARINGS IS A G.P.S. OBSERVATION.



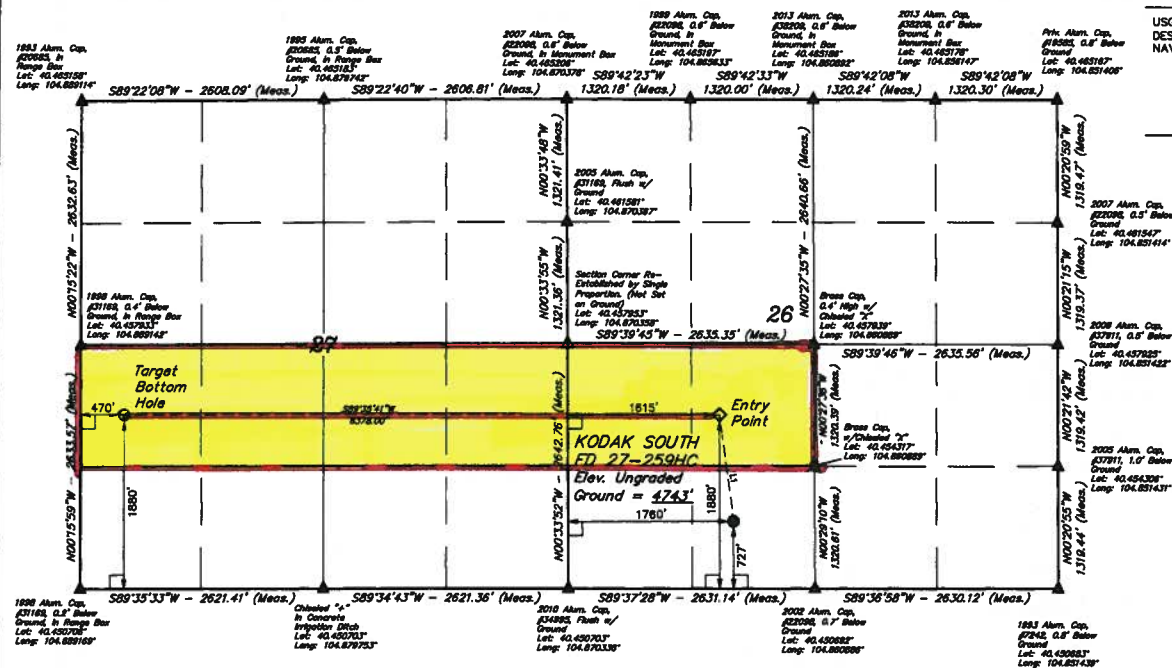
LINE TABLE

LINE	DIRECTION	LENGTH
L1	N007°42'50"W	1162.86'



THIS IS TO CERTIFY THAT THE ABOVE DESCRIBED PROPERTY HAS BEEN SURVEYED AND THE FIELD NOTES OF ACTUAL SURVEYING ARE ON FILE IN THE OFFICE OF THE SURVEYOR AND THAT THE SAME ARE TRUE AND CORRECT TO THE BEST OF MY KNOWLEDGE AND BELIEF.

REGISTERED LAND SURVEYOR
NO. 2825
STATE OF COLORADO



LEGEND:

- └─┘ = 90° SYMBOL
- = PROPOSED WELL HEAD.
- = TARGET BOTTOM HOLE.
- ◇ = ENTRY POINT.
- ▲ = SECTION CORNERS LOCATED.
- △ = SECTION CORNERS RE-ESTABLISHED.
(Not Set on Ground.)

POOP = 1.6

LATITUDE = 40°27'21.11" (40.455884) LONGITUDE = 104°53'17.18" (104.887441)	LATITUDE = 40°27'21.26" (40.455888) LONGITUDE = 104°53'17.38" (104.887445)	LATITUDE = 40°27'21.38" (40.455898) LONGITUDE = 104°53'17.47" (104.887451)
LATITUDE = 40°27'21.16" (40.455883) LONGITUDE = 104°53'17.18" (104.887441)	LATITUDE = 40°27'21.15" (40.455878) LONGITUDE = 104°53'17.18" (104.887441)	LATITUDE = 40°27'21.15" (40.455878) LONGITUDE = 104°53'17.18" (104.887441)

UNTAK ENGINEERING & LAND SURVEYING
88 SOUTH 200 EAST - VERNAL UTAH 84078
(435) 780-1017

SCALE 1" = 1000'	DATE SURVEYED: 10-18-13	DATE DRAWN: 11-02-13
PARTY D.N. G.W. J.S.	REFERENCES G.L.O. PLAT	FILE GREAT WESTERN OIL & GAS COMPANY
WEATHER COOL		