

<div><div>RMWS</div><div>ROCKY MOUNTAIN WIRELINE SERVICE</div></div>										TEMPERATURE LOG CCL									
Company WPX ENERGY																			
Well NER 523-32																			
Field RULISON																			
County GARFIELD										State COLORADO									
Location:										API # : 05-045-21776-00									
										Other Services									
Permanent Datum										LONGITUDE: -107.798976									
Log Measured From										LATITUDE: 39.475036									
Drilling Measured From										SEC 5 TWP 7S RGE 93W									
										Elevation									
										G.L. 7603'									
										K.B. 7629'									
										Ft Above PD 26'									
										G.L. 7603'									
Date										09-06-2014									
Run Number										ONE									
Depth Driller										10350'									
Present Depth Driller										NA									
Depth Logger										10323'									
Bottom Logged Interval										10323'									
Top Log Interval										SURFACE									
Fluid Level										FULL									
Type Fluid										WATER									
Max. Recorded Temp.										237.3° F									
Estimated Cement Top										3038'									
Equipment Number										219									
Location										GRAND JCT.									
Recorded By										FERNANDEZ									
Witnessed By										MR. HARTL									
Borehole Record										Casing Record									
Run Number Bit From To										Size Weight From To									
ONE																			
TWO																			

<<< Fold Here >>>

All interpretations are opinions based on inferences from electrical or other measurements and we cannot and do not guarantee the accuracy or correctness of any interpretation, and we shall not, except in the case of gross or willful negligence on our part, be liable or responsible for any loss, costs, damages, or expenses incurred or sustained by anyone resulting from any interpretation made by any of our officers, agents or employees. These interpretations are also subject to our general terms and conditions set out in our current Price Schedule.

WARRIOR 7.0 SOFTWARE - Comments

NOTE: THERE WAS NO LOG TO CORRELATE TO.

NOTE: TOOL GLITCHED AT 10036' TO 10054'

MAX TEMP = 237.3° F

SHORT JOINTS = 6943' TO 6965'

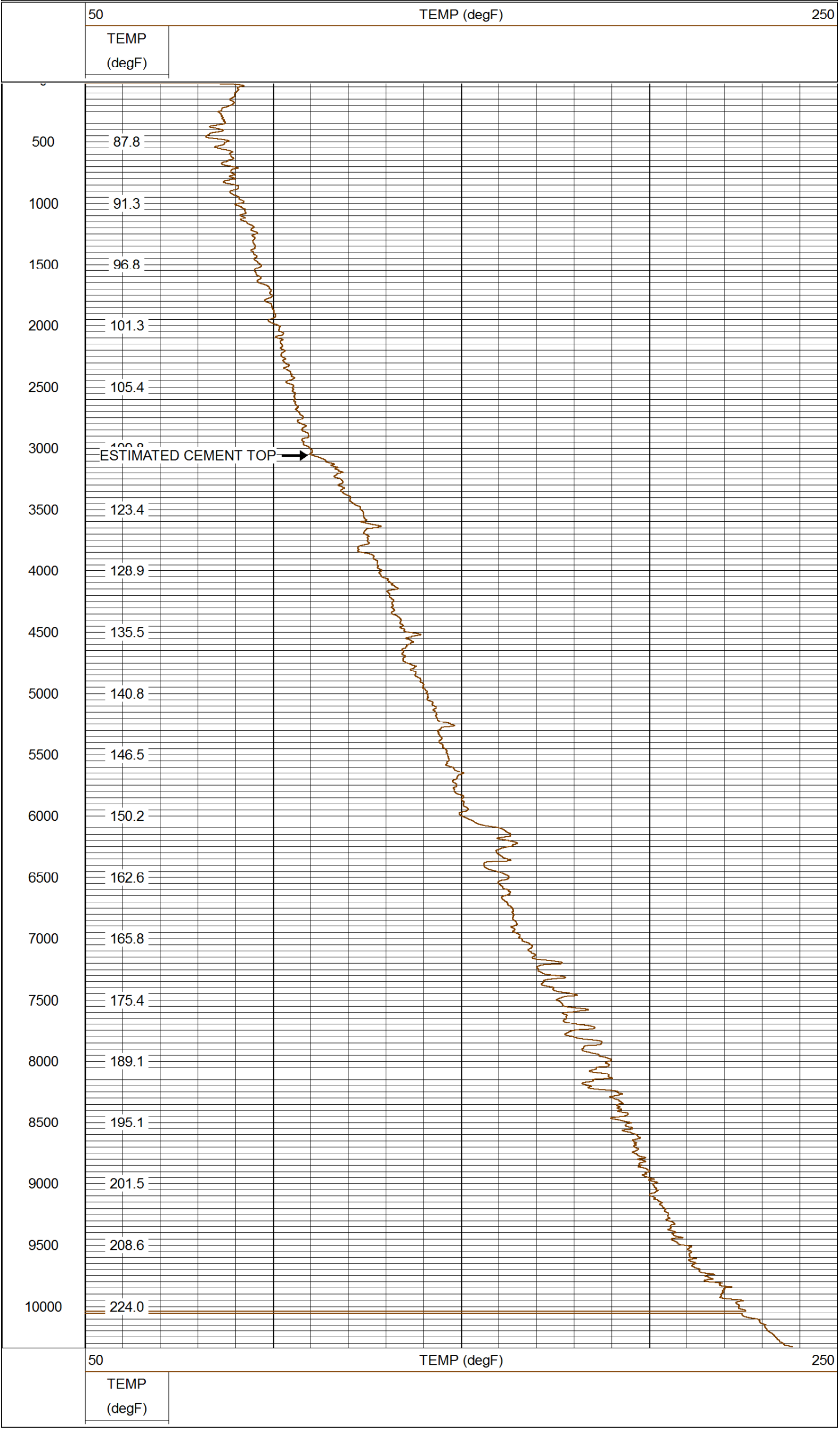
MAIN PASS 5" = 100'

CSG PSI = STATIC



MAIN PASS QUICKLOOK

Database File: 09062014_wpx-ner_523-32.db
Dataset Pathname: pass1.1
Presentation Format: rmtemp_q
Dataset Creation: Sat Sep 06 17:12:16 2014 by Calc SCH 120430
Charted by: Depth in Feet scaled 1:10000



Company WPX ENERGY
Well NER 523-32
Field RULISON
County GARFIELD
State COLORADO