

Noble Energy, Inc

Weld County, CO (NAD 83)

Sec 36, T6N R63W (Wells Ranch AA35)

Wells Ranch AA35-62-1HNA

Wellbore #1

Design: OH

Standard Survey Report

23 April, 2014

IDS

Survey Report

Company:	Noble Energy, Inc	Local Co-ordinate Reference:	Well Wells Ranch AA35-62-1HNA
Project:	Weld County, CO (NAD 83)	TVD Reference:	Well @ 4764.0usft (H&P 277)
Site:	Sec 36, T6N R63W (Wells Ranch AA35)	MD Reference:	Well @ 4764.0usft (H&P 277)
Well:	Wells Ranch AA35-62-1HNA	North Reference:	Grid
Wellbore:	Wellbore #1	Survey Calculation Method:	Minimum Curvature
Design:	OH	Database:	EDM 5000.1 Single User Db

Project	Weld County, CO (NAD 83)		
Map System:	US State Plane 1983	System Datum:	Mean Sea Level
Geo Datum:	North American Datum 1983		
Map Zone:	Colorado Northern Zone		

Site	Sec 36, T6N R63W (Wells Ranch AA35)				
Site Position:		Northing:	1,404,137.44 usft	Latitude:	40° 26' 14.964 N
From:	Lat/Long	Easting:	3,307,823.52 usft	Longitude:	104° 23' 38.796 W
Position Uncertainty:	0.0 usft	Slot Radius:	13-3/16 "	Grid Convergence:	0.71 °

Well	Wells Ranch AA35-62-1HNA					
Well Position	+N/-S	0.0 usft	Northing:	1,404,101.01 usft	Latitude:	40° 26' 14.604 N
	+E/-W	0.0 usft	Easting:	3,307,823.97 usft	Longitude:	104° 23' 38.796 W
Position Uncertainty		0.0 usft	Wellhead Elevation:	0.0 usft	Ground Level:	4,740.0 usft

Wellbore	Wellbore #1				
-----------------	-------------	--	--	--	--

Magnetics	Model Name	Sample Date	Declination (°)	Dip Angle (°)	Field Strength (nT)
	IGRF2010	1/23/2014	8.31	67.05	52,915

Design	OH				
Audit Notes:					
Version:	1.0	Phase:	ACTUAL	Tie On Depth:	0.0
Vertical Section:	Depth From (TVD) (usft)	+N/-S (usft)	+E/-W (usft)	Direction (°)	
	0.0	0.0	0.0	265.67	

Survey Program		Date	4/23/2014		
From (usft)	To (usft)	Survey (Wellbore)	Tool Name	Description	
276.0	622.0	ESS Surface (Wellbore #1)	EMS	EMS - Standard	
649.0	6,768.0	MWD Intermediate (Wellbore #1)	MWD	MWD - Standard	
6,840.0	10,975.0	MWD Lateral (Wellbore #1)	MWD	MWD - Standard	

Survey									
Measured Depth (usft)	Inclination (°)	Azimuth (°)	Vertical Depth (usft)	+N/-S (usft)	+E/-W (usft)	Vertical Section (usft)	Dogleg Rate (°/100usft)	Build Rate (°/100usft)	Turn Rate (°/100usft)
0.0	0.00	0.00	0.0	0.0	0.0	0.0	0.00	0.00	0.00
276.0	0.10	286.20	276.0	0.1	-0.2	0.2	0.04	0.04	0.00
622.0	0.00	44.00	622.0	0.2	-0.5	0.5	0.03	-0.03	0.00
Last ESS									
649.0	0.00	115.20	649.0	0.2	-0.5	0.5	0.00	0.00	0.00
744.0	0.20	211.70	744.0	0.0	-0.6	0.6	0.21	0.21	0.00
First MWD									
838.0	0.40	207.70	838.0	-0.4	-0.8	0.9	0.21	0.21	-4.26

IDS

Survey Report

Company:	Noble Energy, Inc	Local Co-ordinate Reference:	Well Wells Ranch AA35-62-1HNA
Project:	Weld County, CO (NAD 83)	TVD Reference:	Well @ 4764.0usft (H&P 277)
Site:	Sec 36, T6N R63W (Wells Ranch AA35)	MD Reference:	Well @ 4764.0usft (H&P 277)
Well:	Wells Ranch AA35-62-1HNA	North Reference:	Grid
Wellbore:	Wellbore #1	Survey Calculation Method:	Minimum Curvature
Design:	OH	Database:	EDM 5000.1 Single User Db

Survey

Measured Depth (usft)	Inclination (°)	Azimuth (°)	Vertical Depth (usft)	+N/-S (usft)	+E/-W (usft)	Vertical Section (usft)	Dogleg Rate (°/100usft)	Build Rate (°/100usft)	Turn Rate (°/100usft)
931.0	0.40	237.80	931.0	-0.9	-1.3	1.3	0.22	0.00	32.37
1,025.0	0.50	236.50	1,025.0	-1.3	-1.9	2.0	0.11	0.11	-1.38
1,120.0	0.80	226.90	1,120.0	-2.0	-2.7	2.9	0.33	0.32	-10.11
1,215.0	0.90	237.40	1,215.0	-2.8	-3.8	4.0	0.19	0.11	11.05
1,308.0	1.30	207.40	1,308.0	-4.1	-4.9	5.2	0.74	0.43	-32.26
1,403.0	1.50	214.60	1,402.9	-6.1	-6.1	6.6	0.28	0.21	7.58
1,497.0	1.50	209.60	1,496.9	-8.2	-7.4	8.0	0.14	0.00	-5.32
1,592.0	2.30	199.60	1,591.8	-11.1	-8.7	9.5	0.91	0.84	-10.53
1,687.0	3.40	191.60	1,686.7	-15.6	-9.9	11.1	1.23	1.16	-8.42
1,781.0	4.50	199.60	1,780.5	-21.8	-11.7	13.3	1.31	1.17	8.51
1,876.0	6.60	196.70	1,875.1	-30.6	-14.5	16.8	2.23	2.21	-3.05
1,971.0	8.40	198.90	1,969.2	-42.4	-18.3	21.5	1.92	1.89	2.32
2,065.0	9.40	205.10	2,062.1	-55.8	-23.8	28.0	1.47	1.06	6.60
2,160.0	10.90	206.50	2,155.6	-70.9	-31.1	36.4	1.60	1.58	1.47
2,255.0	11.80	204.70	2,248.8	-87.8	-39.2	45.7	1.02	0.95	-1.89
2,349.0	13.10	201.70	2,340.5	-106.4	-47.1	55.0	1.54	1.38	-3.19
2,444.0	13.30	202.50	2,433.0	-126.5	-55.3	64.7	0.29	0.21	0.84
2,539.0	13.60	203.20	2,525.4	-146.9	-63.9	74.8	0.36	0.32	0.74
2,633.0	13.80	203.80	2,616.8	-167.3	-72.8	85.2	0.26	0.21	0.64
2,728.0	13.50	198.30	2,709.1	-188.2	-80.8	94.8	1.40	-0.32	-5.79
2,823.0	13.70	201.20	2,801.4	-209.2	-88.4	103.9	0.75	0.21	3.05
2,918.0	14.90	200.10	2,893.5	-231.1	-96.6	113.8	1.30	1.26	-1.16
3,013.0	13.80	198.70	2,985.5	-253.3	-104.5	123.3	1.21	-1.16	-1.47
3,108.0	11.30	199.70	3,078.2	-272.8	-111.2	131.5	2.64	-2.63	1.05
3,202.0	9.80	198.80	3,170.6	-289.1	-116.9	138.4	1.61	-1.60	-0.96
3,297.0	7.70	197.20	3,264.5	-302.8	-121.4	143.9	2.23	-2.21	-1.68
3,392.0	6.40	193.80	3,358.8	-314.0	-124.5	147.9	1.44	-1.37	-3.58
3,486.0	4.50	203.30	3,452.4	-322.5	-127.3	151.2	2.23	-2.02	10.11
3,581.0	4.60	202.30	3,547.1	-329.5	-130.2	154.7	0.13	0.11	-1.05
3,675.0	3.60	197.40	3,640.8	-335.8	-132.5	157.5	1.13	-1.06	-5.21
3,770.0	2.40	188.80	3,735.7	-340.6	-133.7	159.0	1.35	-1.26	-9.05
3,865.0	1.40	178.90	3,830.7	-343.7	-134.0	159.5	1.10	-1.05	-10.42
3,959.0	0.90	157.20	3,924.6	-345.5	-133.7	159.4	0.70	-0.53	-23.09
4,054.0	0.80	107.10	4,019.6	-346.4	-132.7	158.5	0.76	-0.11	-52.74
4,149.0	1.20	69.80	4,114.6	-346.3	-131.2	156.9	0.78	0.42	-39.26
4,244.0	1.00	109.40	4,209.6	-346.2	-129.5	155.2	0.81	-0.21	41.68
4,338.0	0.70	49.30	4,303.6	-346.1	-128.2	154.0	0.95	-0.32	-63.94
4,433.0	0.80	56.20	4,398.6	-345.4	-127.3	153.0	0.14	0.11	7.26
4,527.0	0.90	56.10	4,492.6	-344.6	-126.1	151.8	0.11	0.11	-0.11
4,622.0	0.50	40.70	4,587.6	-343.8	-125.2	150.8	0.46	-0.42	-16.21
4,716.0	0.50	16.50	4,681.6	-343.1	-124.8	150.4	0.22	0.00	-25.74
4,811.0	0.60	51.60	4,776.6	-342.4	-124.3	149.8	0.36	0.11	36.95
4,906.0	0.60	53.60	4,871.5	-341.8	-123.5	149.0	0.02	0.00	2.11
5,001.0	0.50	85.70	4,966.5	-341.5	-122.7	148.1	0.34	-0.11	33.79

IDS
Survey Report

Company:	Noble Energy, Inc	Local Co-ordinate Reference:	Well Wells Ranch AA35-62-1HNA
Project:	Weld County, CO (NAD 83)	TVD Reference:	Well @ 4764.0usft (H&P 277)
Site:	Sec 36, T6N R63W (Wells Ranch AA35)	MD Reference:	Well @ 4764.0usft (H&P 277)
Well:	Wells Ranch AA35-62-1HNA	North Reference:	Grid
Wellbore:	Wellbore #1	Survey Calculation Method:	Minimum Curvature
Design:	OH	Database:	EDM 5000.1 Single User Db

Survey

Measured Depth (usft)	Inclination (°)	Azimuth (°)	Vertical Depth (usft)	+N/-S (usft)	+E/-W (usft)	Vertical Section (usft)	Dogleg Rate (°/100usft)	Build Rate (°/100usft)	Turn Rate (°/100usft)
5,096.0	0.70	337.50	5,061.5	-340.9	-122.5	147.9	1.03	0.21	-113.89
5,190.0	1.00	332.40	5,155.5	-339.7	-123.1	148.4	0.33	0.32	-5.43
5,285.0	1.40	344.00	5,250.5	-337.8	-123.8	149.0	0.49	0.42	12.21
5,380.0	0.70	4.90	5,345.5	-336.1	-124.1	149.1	0.83	-0.74	22.00
5,474.0	1.30	358.80	5,439.5	-334.5	-124.1	149.0	0.65	0.64	-6.49
5,569.0	1.30	331.70	5,534.5	-332.5	-124.6	149.3	0.64	0.00	-28.53
5,663.0	1.70	331.50	5,628.4	-330.3	-125.8	150.3	0.43	0.43	-0.21
5,758.0	1.80	315.10	5,723.4	-328.0	-127.5	151.9	0.54	0.11	-17.26
5,851.0	6.10	299.10	5,816.1	-324.6	-132.8	157.0	4.73	4.62	-17.20
5,875.1	8.81	298.31	5,840.0	-323.1	-135.6	159.6	11.28	11.27	-3.30
KOP Pln #3 WR AA35-62-1HNA									
5,898.0	11.40	297.90	5,862.6	-321.2	-139.1	163.0	11.28	11.28	-1.77
5,945.0	15.40	292.20	5,908.3	-316.6	-149.0	172.5	8.95	8.51	-12.13
5,993.0	18.60	285.20	5,954.2	-312.2	-162.3	185.4	7.90	6.67	-14.58
6,040.0	21.50	281.00	5,998.3	-308.6	-178.0	200.8	6.89	6.17	-8.94
6,087.0	24.50	276.30	6,041.6	-305.9	-196.2	218.7	7.48	6.38	-10.00
6,135.0	28.50	274.10	6,084.5	-304.0	-217.5	239.8	8.58	8.33	-4.58
6,182.0	31.30	271.40	6,125.3	-302.9	-240.9	263.1	6.61	5.96	-5.74
6,229.0	34.60	269.90	6,164.7	-302.6	-266.4	288.5	7.23	7.02	-3.19
6,277.0	38.90	267.90	6,203.2	-303.2	-295.1	317.2	9.30	8.96	-4.17
6,324.0	41.90	267.20	6,239.0	-304.5	-325.6	347.6	6.46	6.38	-1.49
6,372.0	45.10	268.80	6,273.8	-305.6	-358.6	380.6	7.05	6.67	3.33
6,419.0	48.30	271.40	6,306.0	-305.6	-392.8	414.7	7.91	6.81	5.53
6,466.0	51.10	273.40	6,336.4	-304.0	-428.6	450.3	6.78	5.96	4.26
6,514.0	55.70	272.20	6,365.0	-302.2	-467.1	488.5	9.79	9.58	-2.50
6,561.0	60.70	269.60	6,389.8	-301.6	-507.0	528.3	11.63	10.64	-5.53
6,608.0	64.10	268.50	6,411.6	-302.3	-548.6	569.9	7.53	7.23	-2.34
6,656.0	67.70	268.90	6,431.2	-303.3	-592.4	613.6	7.54	7.50	0.83
6,703.0	71.80	267.20	6,447.4	-304.8	-636.5	657.7	9.36	8.72	-3.62
6,750.0	75.80	265.60	6,460.5	-307.6	-681.5	702.8	9.12	8.51	-3.40
6,768.0	77.80	265.60	6,464.6	-309.0	-699.0	720.3	11.11	11.11	0.00
Last MWD in curve section									
6,823.0	83.61	265.98	6,473.5	-312.9	-753.1	774.6	10.58	10.56	0.70
Actual 7" @ 6823' MD / 6477' TVD / 341' FSL & 580' FEL, Sec 35 - Actual 7"									
6,840.0	85.40	266.10	6,475.2	-314.1	-770.0	791.5	10.58	10.56	0.68
First Lateral MWD									
6,935.0	89.80	267.80	6,479.1	-319.2	-864.7	886.4	4.96	4.63	1.79
6,992.2	89.98	267.19	6,479.2	-321.7	-921.8	943.5	1.11	0.32	-1.06
LP Pln #3 WR AA35-62-1HNA									
7,029.0	90.10	266.80	6,479.2	-323.6	-958.6	980.3	1.11	0.32	-1.06
7,124.0	90.30	269.30	6,478.9	-326.8	-1,053.6	1,075.2	2.64	0.21	2.63
7,219.0	91.70	269.10	6,477.2	-328.1	-1,148.5	1,170.0	1.49	1.47	-0.21
7,314.0	90.30	270.50	6,475.6	-328.5	-1,243.5	1,264.8	2.08	-1.47	1.47
7,408.0	90.20	270.00	6,475.2	-328.1	-1,337.5	1,358.5	0.54	-0.11	-0.53

IDS
Survey Report

Company:	Noble Energy, Inc	Local Co-ordinate Reference:	Well Wells Ranch AA35-62-1HNA
Project:	Weld County, CO (NAD 83)	TVD Reference:	Well @ 4764.0usft (H&P 277)
Site:	Sec 36, T6N R63W (Wells Ranch AA35)	MD Reference:	Well @ 4764.0usft (H&P 277)
Well:	Wells Ranch AA35-62-1HNA	North Reference:	Grid
Wellbore:	Wellbore #1	Survey Calculation Method:	Minimum Curvature
Design:	OH	Database:	EDM 5000.1 Single User Db

Survey									
Measured Depth (usft)	Inclination (°)	Azimuth (°)	Vertical Depth (usft)	+N/-S (usft)	+E/-W (usft)	Vertical Section (usft)	Dogleg Rate (°/100usft)	Build Rate (°/100usft)	Turn Rate (°/100usft)
7,503.0	91.00	270.00	6,474.2	-328.1	-1,432.5	1,453.2	0.84	0.84	0.00
7,598.0	90.80	270.80	6,472.7	-327.4	-1,527.5	1,547.9	0.87	-0.21	0.84
7,693.0	87.80	271.30	6,473.8	-325.7	-1,622.5	1,642.4	3.20	-3.16	0.53
7,788.0	88.60	271.40	6,476.8	-323.4	-1,717.4	1,736.9	0.85	0.84	0.11
7,882.0	90.30	271.80	6,477.7	-320.8	-1,811.3	1,830.4	1.86	1.81	0.43
7,977.0	89.50	269.30	6,477.9	-319.9	-1,906.3	1,925.0	2.76	-0.84	-2.63
8,071.0	89.90	268.30	6,478.4	-321.9	-2,000.3	2,018.9	1.15	0.43	-1.06
8,166.0	90.60	266.90	6,478.0	-325.8	-2,095.2	2,113.8	1.65	0.74	-1.47
8,261.0	91.50	270.00	6,476.2	-328.4	-2,190.2	2,208.7	3.40	0.95	3.26
8,355.0	92.60	269.20	6,472.9	-329.1	-2,284.1	2,302.4	1.45	1.17	-0.85
8,450.0	91.50	269.40	6,469.5	-330.2	-2,379.0	2,397.2	1.18	-1.16	0.21
8,545.0	91.10	268.80	6,467.3	-331.7	-2,474.0	2,492.0	0.76	-0.42	-0.63
8,640.0	89.60	269.20	6,466.7	-333.4	-2,569.0	2,586.8	1.63	-1.58	0.42
8,735.0	89.70	269.30	6,467.3	-334.6	-2,664.0	2,681.6	0.15	0.11	0.11
8,829.0	91.10	269.10	6,466.6	-335.9	-2,757.9	2,775.4	1.50	1.49	-0.21
8,924.0	90.30	270.00	6,465.5	-336.7	-2,852.9	2,870.2	1.27	-0.84	0.95
9,019.0	90.40	268.50	6,464.9	-337.9	-2,947.9	2,965.0	1.58	0.11	-1.58
9,114.0	91.90	268.20	6,463.0	-340.6	-3,042.9	3,059.9	1.61	1.58	-0.32
9,209.0	91.70	268.60	6,460.0	-343.3	-3,137.8	3,154.7	0.47	-0.21	0.42
9,304.0	90.00	269.20	6,458.6	-345.1	-3,232.7	3,249.6	1.90	-1.79	0.63
9,398.0	90.70	269.00	6,458.0	-346.6	-3,326.7	3,343.4	0.77	0.74	-0.21
9,493.0	90.60	270.00	6,456.9	-347.4	-3,421.7	3,438.2	1.06	-0.11	1.05
9,588.0	89.70	270.10	6,456.7	-347.3	-3,516.7	3,532.9	0.95	-0.95	0.11
9,683.0	89.90	270.40	6,457.0	-346.9	-3,611.7	3,627.6	0.38	0.21	0.32
9,778.0	91.40	270.40	6,456.0	-346.3	-3,706.7	3,722.3	1.58	1.58	0.00
9,873.0	89.00	267.10	6,455.6	-348.3	-3,801.7	3,817.1	4.29	-2.53	-3.47
9,968.0	88.80	265.80	6,457.4	-354.2	-3,896.5	3,912.1	1.38	-0.21	-1.37
10,062.0	89.90	267.90	6,458.5	-359.4	-3,990.3	4,006.0	2.52	1.17	2.23
10,157.0	90.70	268.60	6,458.0	-362.3	-4,085.3	4,100.9	1.12	0.84	0.74
10,252.0	91.60	267.70	6,456.1	-365.3	-4,180.2	4,195.8	1.34	0.95	-0.95
10,347.0	90.50	267.60	6,454.4	-369.2	-4,275.1	4,290.8	1.16	-1.16	-0.11
10,442.0	88.50	269.70	6,455.2	-371.5	-4,370.0	4,385.6	3.05	-2.11	2.21
10,537.0	88.70	269.70	6,457.5	-372.0	-4,465.0	4,480.4	0.21	0.21	0.00
10,631.0	89.30	270.00	6,459.2	-372.2	-4,559.0	4,574.1	0.71	0.64	0.32
10,726.0	89.30	269.90	6,460.3	-372.3	-4,654.0	4,668.8	0.11	0.00	-0.11
10,820.0	90.70	270.50	6,460.3	-372.0	-4,748.0	4,762.5	1.62	1.49	0.64
10,910.0	87.30	270.20	6,461.9	-371.4	-4,838.0	4,852.2	3.79	-3.78	-0.33
Last MWD									
10,974.7	87.30	270.20	6,464.9	-371.2	-4,902.6	4,916.7	0.00	0.00	0.00
PBHL WR AA35-62-1HNA									
10,975.0	87.30	270.20	6,465.0	-371.2	-4,902.9	4,916.9	0.00	0.00	0.00
PTD @ 10975' MD / 6465' TVD / 327' FSL & 534' FWL Sec 35									

IDS
Survey Report

Company:	Noble Energy, Inc	Local Co-ordinate Reference:	Well Wells Ranch AA35-62-1HNA
Project:	Weld County, CO (NAD 83)	TVD Reference:	Well @ 4764.0usft (H&P 277)
Site:	Sec 36, T6N R63W (Wells Ranch AA35)	MD Reference:	Well @ 4764.0usft (H&P 277)
Well:	Wells Ranch AA35-62-1HNA	North Reference:	Grid
Wellbore:	Wellbore #1	Survey Calculation Method:	Minimum Curvature
Design:	OH	Database:	EDM 5000.1 Single User Db

Casing Points

Measured Depth (usft)	Vertical Depth (usft)	Name	Casing Diameter (")	Hole Diameter (")
6,823.0	6,473.5	Actual 7"	7	8-3/4

Design Annotations

Measured Depth (usft)	Vertical Depth (usft)	Local Coordinates		Comment
		+N/-S (usft)	+E/-W (usft)	
622.0	622.0	0.2	-0.5	Last ESS
744.0	744.0	0.0	-0.6	First MWD
6,768.0	6,464.6	-309.0	-699.0	Last MWD in curve section
6,823.0	6,473.5	-312.9	-753.1	Actual 7" @ 6823' MD / 6477' TVD / 341' FSL & 580' FEL, Sec 35
6,840.0	6,475.2	-314.1	-770.0	First Lateral MWD
10,910.0	6,461.9	-371.4	-4,838.0	Last MWD
10,975.0	6,465.0	-371.2	-4,902.9	PTD @ 10975' MD / 6465' TVD / 327' FSL & 534' FWL Sec 35

Checked By: _____	Approved By: _____	Date: _____
-------------------	--------------------	-------------



Weld County, CO (NAD 83) Sec 36, T6N R63W (Wells Ranch AA35) Wells Ranch AA35-62-1HNA H&P 277 Plan #3



Azimuths to Grid North
Convergence: 0.71°
Total Correction: 7.60°

Magnetic Field
Strength: 52915.1snT
Dip Angle: 67.05°
Date: 1/23/2014
Model: IGRF2010

CASING DETAILS

TVD	MD	Name	Size
6473.5	6823.0	Actual 7"	7"

SECTION DETAILS

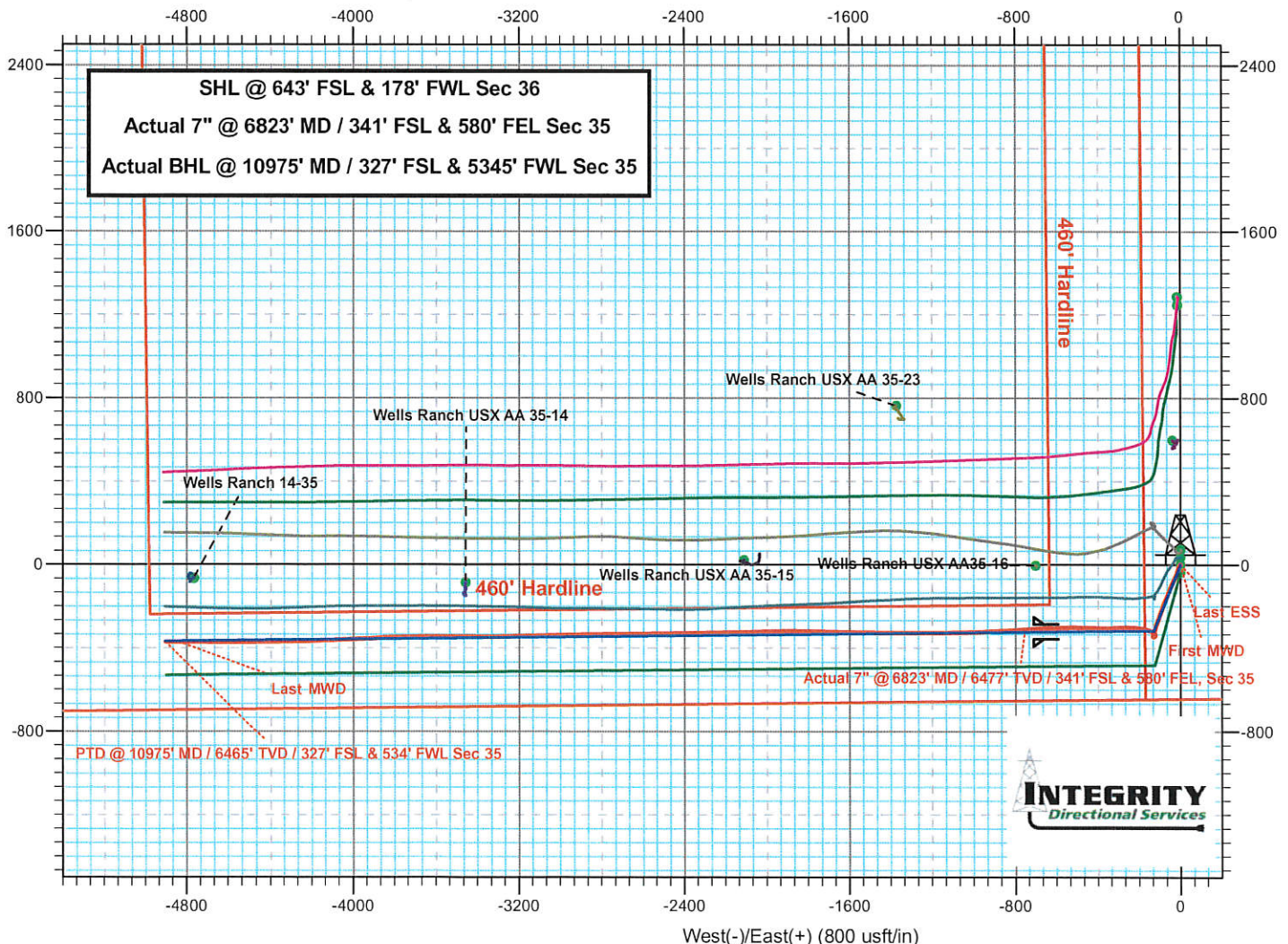
MD	Inc	Azi	TVD	+N/-S	+E/-W	Dleg	TFace	VSect	Target
0.0	0.00	0.00	0.0	0.0	0.0	0.00	0.00	0.0	
1500.0	0.00	0.00	1500.0	0.0	0.0	0.00	0.00	0.0	
2167.3	13.35	202.05	2161.2	-71.7	-29.0	2.00	202.05	34.3	
2974.1	13.35	202.05	2946.3	-244.3	-99.0	0.00	0.00	116.9	
3641.3	0.00	0.00	3607.5	-316.0	-128.0	2.00	180.00	151.2	
5874.3	0.00	0.00	5840.5	-316.0	-128.0	0.00	0.00	151.2	KOP Pln #3 WR AA35-62-1HNA
6818.8	85.00	269.39	6474.7	-322.2	-709.1	9.00	269.39	731.2	
6893.8	85.00	269.39	6481.2	-323.0	-783.8	0.00	0.00	805.7	
7031.8	90.52	269.39	6486.6	-324.4	-921.7	4.00	0.02	943.3	
11013.8	90.52	269.39	6450.3	-366.7	-4903.3	0.00	0.00	4917.0	PBHL WR AA35-62-1HNA

SITE DETAILS: Sec 36, T6N R63W (Wells Ranch AA35)

Site Centre Northing: 1404137.44
Easting: 3307823.51
Positional Uncertainty: 0.0
Convergence: 0.71
Local North: Grid

WELL DETAILS: Wells Ranch AA35-62-1HNA

Ground Level: 4740.0
+N/-S +E/-W Northing Easting Latitude Longitude
0.0 0.0 1404101.01 3307823.97 40° 26' 14.604 N 104° 23' 38.796 W





Weld County, CO (NAD 83) Sec 36, T6N R63W (Wells Ranch AA35) Wells Ranch AA35-62-1HNA H&P 277 Plan #3



Azimuths to Grid North
Convergence: 0.71°
Total Correction: 7.60°

Magnetic Field
Strength: 52915.1snT
Dip Angle: 67.05°
Date: 1/23/2014
Model: IGRF2010

Plan #3

MD	Inc	Azi	TVD	+N/-S	+E/-W	Dleg	TFace	Vsect	Target
0.0	0.00	0.00	0.0	0.0	0.0	0.00	0.00	0.0	
1500.0	0.00	0.00	1500.0	0.0	0.0	0.00	0.00	0.0	
2167.3	13.35	202.05	2161.2	-71.7	-29.0	2.00	202.05	34.3	
2974.1	13.35	202.05	2946.3	-244.3	-99.0	0.00	0.00	116.9	
3641.3	0.00	0.00	3607.5	-316.0	-128.0	2.00	180.00	151.2	
5874.3	0.00	0.00	5840.5	-316.0	-128.0	0.00	0.00	151.2	KOP Pln #3 WR AA35-62-1HNA
6818.8	85.00	269.39	6474.7	-322.2	-709.1	9.00	269.39	731.2	
6893.8	85.00	269.39	6481.2	-323.0	-783.8	0.00	0.00	805.7	
7031.8	90.52	269.39	6486.6	-324.4	-921.7	4.00	0.02	943.3	
11013.8	90.52	269.39	6450.3	-366.7	-4903.3	0.00	0.00	4917.0	PBHL WR AA35-62-1HNA

WELL DETAILS: Wells Ranch AA35-62-1HNA

+N/-S	+E/-W	Ground Level:	Northing	Easting	Latitude	Longitude
0.0	0.0	4740.0	1404101.01	3307823.97	40° 26' 14.604 N	104° 23' 38.796 W

SHL @ 643' FSL & 178' FWL Sec 36

Actual 7" @ 6823' MD / 341' FSL & 580' FEL Sec 35

Actual BHL @ 10975' MD / 327' FSL & 534' FWL Sec 35

SITE DETAILS: Sec 36, T6N R63W (Wells Ranch AA35)

Site Centre Northing: 1404137.44
Easting: 3307823.51
Positional Uncertainty: 0.0
Convergence: 0.71
Local North: Grid

CASING DETAILS

TVD	MD	Name	Size
6473.5	6823.0	Actual 7"	7

