

# WELLBORE DIAGRAM

10/1/2009

**Bayswater Expl & Prod, LLC**  
**Kuettel 11-15**

SWSW Sec. 10, T5N-R65W

Weld County, CO  
05-123-23870

Us HWY 34 Business, & E 18th St. SE.1 mi, S into  
1st ave & 18th St., E 1.2 st. S @ Tractor Store

CLD

Note: TIGHT LOCATION, Multiple wells on pad

DIRECTIONAL: 1220' KICK, KOP @ 1400', Vertical @ 5900', 24° MAX

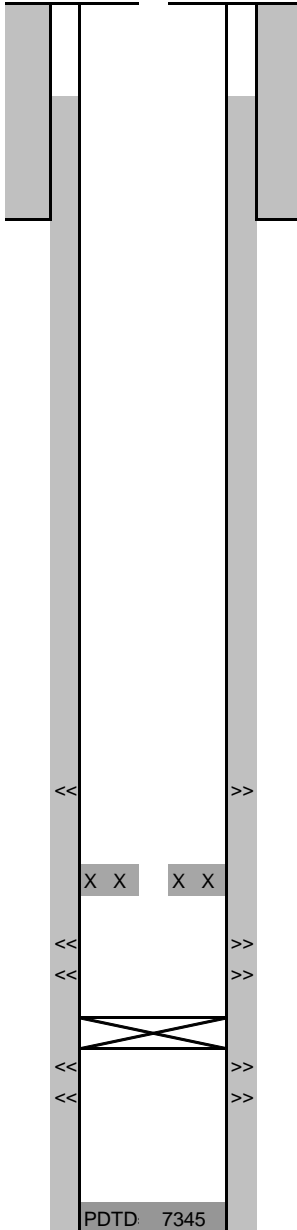
Codell only via CSG

Frac Via CSG

G.L.= 4645

K.B.= 4653

TOC=100'  
(CBL)



8-5/8", 24# Surf. CSG @ 417'  
Cmt'd w/ 215sx

**NB "A" 6901'-6922', 4 spf, 11/20/13**

Initial frac 11/20/13: 157,601 gals, 97,986 gals SLF, 100,374 lbs 30/50 White, 11/20/13

**CIBP at 6990' 11/20/13**

**NB "B" 7030'-7054'**

**4 spf, .42 dia, 19 gr, 120 degree phasing**

**NB "C" 7104'-7134'**

**4 spf, .42 dia, 19 gr, 120 degree phasing**

Initial frac 11/20/13: 327,227 gals, 223,020 gals SLF, 225,126 lbs 30/50 White, 11/20/13

**CIBP @ 7200'**

**CODELL**

**7217'-7227'**

4-1/2" 11.6# CSG set @ 7362' (176 jnts)

Cmt'd w/ 690sx

PBTVD= 7146

TD= 7369

TVD= 7179

\* all measurements from KB (MD) unless otherwise indicated