

<div><div><div><div><div></div><div>RMWS</div><div>ROCKY MOUNTAIN WIRELINE SERVICE</div></div></div></div></div>										TEMPERATURE LOG CCL				
Company WPX ENERGY														
Well NER 24 - 32														
Field RULISON														
County GARFIELD State COLORADO														
Location:					API # : 05 - 045 - 21797 - 00			Other Services						
SEC 5 TWP 7S RGE 93W					LONGITUDE: -107.798910 LATITUDE: 39.475028									
Permanent Datum G.L.					Elevation		Elevation							
Log Measured From K.B.					Ft Above PD		K.B. 7603' D.F. 7628' G.L. 7603'							
Drilling Measured From K.B.														
Date 08 - 29 - 2014														
Run Number ONE														
Depth Driller 10295'														
Present Depth Driller NA														
Depth Logger 10230'														
Bottom Logged Interval 10230'														
Top Log Interval SURFACE														
Fluid Level FULL														
Type Fluid WATER														
Max. Recorded Temp. 235.1° F														
Estimated Cement Top 5460'														
Equipment Number 219														
Location GRAND JCT.														
Recorded By INGRAM														
Witnessed By MR. HARTL														
Borehole Record														
Run Number Bit From To Size Weight From To														
ONE														
TWO														

<<< Fold Here >>>

All interpretations are opinions based on inferences from electrical or other measurements and we cannot and do not guarantee the accuracy or correctness of any interpretation, and we shall not, except in the case of gross or willful negligence on our part, be liable or responsible for any loss, costs, damages, or expenses incurred or sustained by anyone resulting from any interpretation made by any of our officers, agents or employees. These interpretations are also subject to our general terms and conditions set out in our current Price Schedule.

WARRIOR 7.0 SOFTWARE - Comments

NOTE: THERE WAS NO LOG TO CORRELATE TO.

MAX TEMP = 235.1° F

ESTIMATED TOP OF CEMENT = 5460'

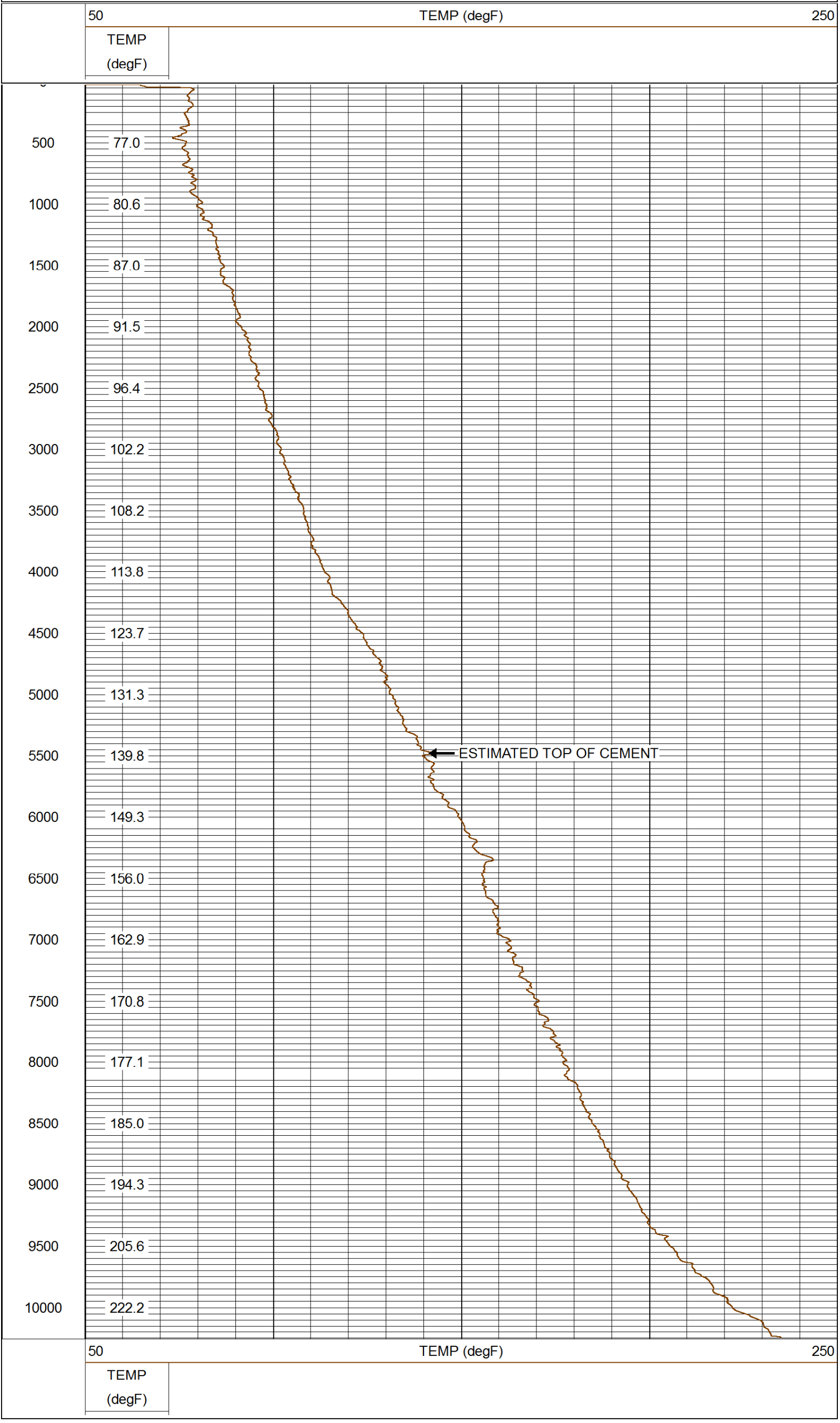
SHORT JOINTS = 6997' TO 7017'

MAIN PASS 5" = 100'
CSG PSI = STATIC



MAIN PASS QUICK LOOK

Database File: 082914_wpxenergy_ner_24_32.db
Dataset Pathname: main/pass1.1
Presentation Format: rmtemp_q
Dataset Creation: Fri Aug 29 11:14:28 2014 by Calc SCH 120430
Charted by: Depth in Feet scaled 1:10000



Company WPX ENERGY
Well NER 24 - 32
Field RULISON
County GARFIELD
State COLORADO