



Location:	COLORADO	Slot:	SLOT#42 TAIPAN 27C-15HZ (2192'FSL & 530'FEL, SEC.22)
Field:	WELD COUNTY (KERR MCGEE)	Well:	TAIPAN 27C-15HZ
Facility:	SEC.22-T2N-R67W	Wellbore:	TAIPAN 27C-15HZ PWB

Plot reference wellpath is TAIWAN 27C-15HZ (PERMIT REV-1) PWP

Slot: SLOT#42 TAIWAN 27C-15HZ (2192'ESL & 530'FEL. SEC.22)

Field: WELD COUNTY (KERR MCGEE)

Well: TAIPAN 27C-15HZ

Facility: SEC.22-T2N-R67W

Wellbore: TAIPAN 27C-15HZ PWB

Plot reference wellpath is TAIWAN 27C-15HZ (PERMIT REV-1) PWP

True vertical depths are referenced to PERMIT (17KB) (RKB)

Grid System: NAD83 / Lambert Colorado SP, Northern Zone (501), US feet

Measured depths are referenced to PERMIT (17°N) (P&B).

North Reference: True north

DEDMIT (17YR) (DKR) to Mean Sea Level: 5015 feet

Scale: Two digits

[illegible]

Scale: True Global	

Mean Sea Level to Mud line (At Slot: SLO)

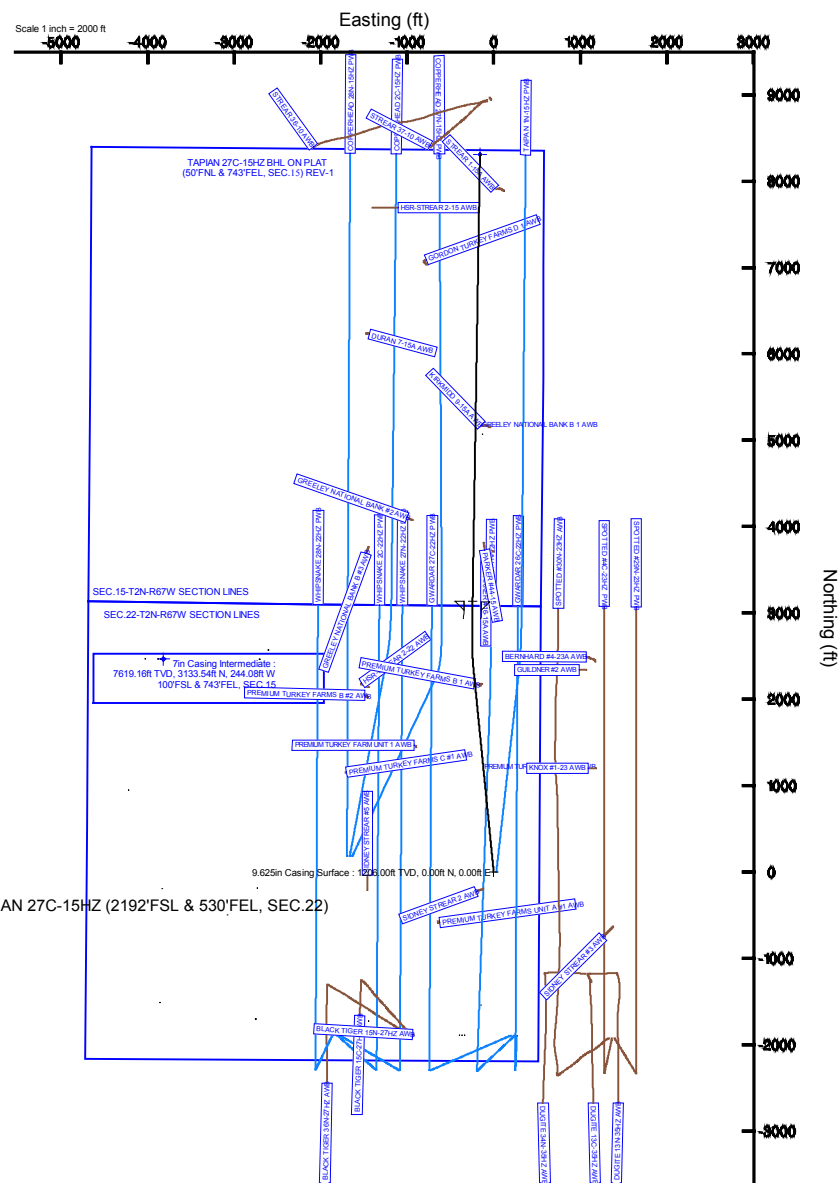
Depths are in feet	

Facility Name				Grid East (US R)	Grid North (US R)	Latitude	Longitude
SEC 22-T2N-R67W				3173770.270	1290629.950	46°07'46.204"N	104°52'42.769"W
Slot		Local N (ft)	Local E (ft)	Grid East (US R)	Grid North (US R)	Latitude	Longitude
SLOT#42 TAPAN 27C-15#2 (12192FSL & 530FTEL SEC.22)		-2573.61	2576.55	3176364.684	1290828.571	46°07'20.770"N	104°52'09.602"W
PERMT (17K9) (R93) to Mud line (N6 Slot: SLOTH#42 TAPAN 27C-15#2 (12192FSL & 530FTEL SEC.22))						50158	
Mean Sea Level to Mud line (N6 Slot: SLOTH#42 TAPAN 27C-15#2 (12192FSL & 530FTEL SEC.22))						0R	
PERMT (17K9) (R93) to Mean Sea Level						50158	

Start MD (ft)	End MD (ft)	Tool	Model	Log Name/Comment	Wellbore
17.00	13735.28	NaviTrak	NaviTrak (IFR)		TAIPAN 27C-15HZ PWB

Design Comment	MD (ft)	Inc (°)	Az (°)	TVD (ft)	Local N (ft)	Local E (ft)	DLS (°/100ft)	VS (ft)
TIE-ON	17.00	0.000	354.320	17.00	0.00	0.00	0.00	0.00
BEGIN NUDGE	1310.00	0.000	354.320	1310.00	0.00	0.00	0.00	0.00
END NUDGE	2560.00	25.000	354.320	2520.71	267.09	-26.57	2.00	266.62
BUILD @ 6/100	7591.11	25.000	354.320	7080.45	2382.89	-237.00	0.00	2378.69
BUILD @ 8/100	8344.68	70.000	0.938	7576.83	2932.72	-247.52	6.00	2919.27
LANDING POINT	8599.56	90.390	0.938	7620.00	3173.52	-243.43	8.00	3169.11
TOTAL DEPTH	13735.28	90.390	0.938	7585.00	8308.44	-159.39	0.00	8304.72

Name	MD (ft)	TVD (ft)	Local N (ft)	Local E (ft)	Grid East (US ft)	Grid North (US ft)	Latitude	Longitude
SEC 15-T2N-R5W SECTION LINES		0.00	13005.80	-2680.32	3177592.63	1301060.42	40°07'29.207"N	104°52'44.123"W
SEC 22-T2N-R5W SECTION LINES			2405.76	-3816.78	3172590.63	1295913.02	40°07'45.134"N	104°52'58.739"W
TAPAN 27C-1524 BH, ON PLAT (50%N & 743'FE, SEC 23) REV 1	13735.28	7555.00	8308.44	-1559.39	3176148.22	1296831.31	40°08'42.875"N	104°52'11.654"W



REFERENCE WELLPATH IDENTIFICATION			
Operator	KERR-MCGEE OIL & GAS ONSHORE LP	Slot	SLOT#42 TAIPAN 27C-15HZ (2192'FSL & 530'FEL, SEC.22)
Area	COLORADO	Well	TAIPAN 27C-15HZ
Field	WELD COUNTY (KERR MCGEE)	Wellbore	TAIPAN 27C-15HZ PWB
Facility	SEC.22-T2N-R67W		

REPORT SETUP INFORMATION			
Projection System	NAD83 / Lambert Colorado SP, Northern Zone (501), US feet	Software System	WellArchitect® 4.0.0
North Reference	True	User	Precain
Scale	0.999959	Report Generated	05/Sep/2014 at 10:26
Convergence at slot	n/a	Database/Source file	WellArchitectDB/TAIPAN_27C-15HZ_PWB.xml

WELLPATH LOCATION						
	Local coordinates		Grid coordinates		Geographic coordinates	
	North[ft]	East[ft]	Easting[US ft]	Northing[US ft]	Latitude	Longitude
Slot Location	-2573.61	2576.55	3176364.68	1288074.57	40°07'20.770"N	104°52'09.602"W
Facility Reference Pt			3173770.27	1290629.95	40°07'46.204"N	104°52'42.769"W
Field Reference Pt			3197771.84	1268891.29	40°04'09.600"N	104°47'36.000"W

WELLPATH DATUM			
Calculation method	Minimum curvature	PERMIT (17'KB) (RKB) to Facility Vertical Datum	5015.00ft
Horizontal Reference Pt	Slot	PERMIT (17'KB) (RKB) to Mean Sea Level	5015.00ft
Vertical Reference Pt	PERMIT (17'KB) (RKB)	PERMIT (17'KB) (RKB) to Mud Line at Slot (SLOT#42 TAIPAN 27C-15HZ (2192'FSL & 530'FEL, SEC.22))	5015.00ft
MD Reference Pt	PERMIT (17'KB) (RKB)	Section Origin	N 0.00, E 0.00 ft
Field Vertical Reference	Mean Sea Level	Section Azimuth	0.94°

REFERENCE WELLPATH IDENTIFICATION			
Operator	KERR-MCGEE OIL & GAS ONSHORE LP	Slot	SLOT#42 TAIPAN 27C-15HZ (2192'FSL & 530'FEL, SEC.22)
Area	COLORADO	Well	TAIPAN 27C-15HZ
Field	WELD COUNTY (KERR MCGEE)	Wellbore	TAIPAN 27C-15HZ PWB
Facility	SEC.22-T2N-R67W		

WELLPATH DATA (156 stations) † = interpolated/extrapolated station										
MD [ft]	Inclination [°]	Azimuth [°]	TVD [ft]	Vert Sect [ft]	North [ft]	East [ft]	Latitude	Longitude	DLS [°/100ft]	Comments
0.00†	0.000	354.320	0.00	0.00	0.00	0.00	40°07'20.770"N	104°52'09.602"W	0.00	
17.00	0.000	354.320	17.00	0.00	0.00	0.00	40°07'20.770"N	104°52'09.602"W	0.00	TIE-ON
117.00†	0.000	354.320	117.00	0.00	0.00	0.00	40°07'20.770"N	104°52'09.602"W	0.00	
217.00†	0.000	354.320	217.00	0.00	0.00	0.00	40°07'20.770"N	104°52'09.602"W	0.00	
317.00†	0.000	354.320	317.00	0.00	0.00	0.00	40°07'20.770"N	104°52'09.602"W	0.00	
417.00†	0.000	354.320	417.00	0.00	0.00	0.00	40°07'20.770"N	104°52'09.602"W	0.00	
517.00†	0.000	354.320	517.00	0.00	0.00	0.00	40°07'20.770"N	104°52'09.602"W	0.00	
617.00†	0.000	354.320	617.00	0.00	0.00	0.00	40°07'20.770"N	104°52'09.602"W	0.00	
687.00†	0.000	354.320	687.00	0.00	0.00	0.00	40°07'20.770"N	104°52'09.602"W	0.00	Base Fox Hills
717.00†	0.000	354.320	717.00	0.00	0.00	0.00	40°07'20.770"N	104°52'09.602"W	0.00	
817.00†	0.000	354.320	817.00	0.00	0.00	0.00	40°07'20.770"N	104°52'09.602"W	0.00	
917.00†	0.000	354.320	917.00	0.00	0.00	0.00	40°07'20.770"N	104°52'09.602"W	0.00	
1017.00†	0.000	354.320	1017.00	0.00	0.00	0.00	40°07'20.770"N	104°52'09.602"W	0.00	
1117.00†	0.000	354.320	1117.00	0.00	0.00	0.00	40°07'20.770"N	104°52'09.602"W	0.00	
1217.00†	0.000	354.320	1217.00	0.00	0.00	0.00	40°07'20.770"N	104°52'09.602"W	0.00	
1310.00	0.000	354.320	1310.00	0.00	0.00	0.00	40°07'20.770"N	104°52'09.602"W	0.00	BEGIN NUDGE
1317.00†	0.140	354.320	1317.00	0.01	0.01	0.00	40°07'20.770"N	104°52'09.602"W	2.00	
1417.00†	2.140	354.320	1416.98	1.98	1.99	-0.20	40°07'20.790"N	104°52'09.605"W	2.00	
1517.00†	4.140	354.320	1516.82	7.43	7.44	-0.74	40°07'20.844"N	104°52'09.612"W	2.00	
1617.00†	6.140	354.320	1616.41	16.32	16.35	-1.63	40°07'20.932"N	104°52'09.623"W	2.00	
1717.00†	8.140	354.320	1715.63	28.67	28.72	-2.86	40°07'21.054"N	104°52'09.639"W	2.00	
1817.00†	10.140	354.320	1814.36	44.45	44.53	-4.43	40°07'21.210"N	104°52'09.659"W	2.00	
1917.00†	12.140	354.320	1912.47	63.64	63.75	-6.34	40°07'21.400"N	104°52'09.684"W	2.00	
2017.00†	14.140	354.320	2009.85	86.22	86.37	-8.59	40°07'21.624"N	104°52'09.713"W	2.00	
2117.00†	16.140	354.320	2106.37	112.16	112.36	-11.18	40°07'21.880"N	104°52'09.746"W	2.00	
2217.00†	18.140	354.320	2201.92	141.44	141.68	-14.09	40°07'22.170"N	104°52'09.783"W	2.00	
2317.00†	20.140	354.320	2296.39	174.00	174.31	-17.34	40°07'22.493"N	104°52'09.825"W	2.00	
2417.00†	22.140	354.320	2389.66	209.83	210.20	-20.91	40°07'22.847"N	104°52'09.871"W	2.00	
2517.00†	24.140	354.320	2481.61	248.86	249.30	-24.80	40°07'23.234"N	104°52'09.921"W	2.00	
2560.00	25.000	354.320	2520.71	266.62	267.09	-26.57	40°07'23.409"N	104°52'09.944"W	2.00	END NUDGE
2617.00†	25.000	354.320	2572.37	290.55	291.06	-28.95	40°07'23.646"N	104°52'09.975"W	0.00	
2717.00†	25.000	354.320	2663.00	332.53	333.12	-33.13	40°07'24.062"N	104°52'10.029"W	0.00	
2817.00†	25.000	354.320	2753.63	374.51	375.17	-37.31	40°07'24.477"N	104°52'10.082"W	0.00	
2829.54†	25.000	354.320	2765.00	379.77	380.44	-37.84	40°07'24.530"N	104°52'10.089"W	0.00	SSPG
2917.00†	25.000	354.320	2844.26	416.49	417.22	-41.50	40°07'24.893"N	104°52'10.136"W	0.00	
3017.00†	25.000	354.320	2934.89	458.47	459.28	-45.68	40°07'25.309"N	104°52'10.190"W	0.00	
3117.00†	25.000	354.320	3025.53	500.45	501.33	-49.86	40°07'25.724"N	104°52'10.244"W	0.00	
3217.00†	25.000	354.320	3116.16	542.43	543.39	-54.05	40°07'26.140"N	104°52'10.298"W	0.00	
3317.00†	25.000	354.320	3206.79	584.41	585.44	-58.23	40°07'26.555"N	104°52'10.352"W	0.00	
3417.00†	25.000	354.320	3297.42	626.39	627.50	-62.41	40°07'26.971"N	104°52'10.405"W	0.00	
3517.00†	25.000	354.320	3388.05	668.37	669.55	-66.59	40°07'27.387"N	104°52'10.459"W	0.00	
3617.00†	25.000	354.320	3478.68	710.35	711.60	-70.78	40°07'27.802"N	104°52'10.513"W	0.00	
3717.00†	25.000	354.320	3569.31	752.33	753.66	-74.96	40°07'28.218"N	104°52'10.567"W	0.00	
3817.00†	25.000	354.320	3659.94	794.31	795.71	-79.14	40°07'28.633"N	104°52'10.621"W	0.00	
3917.00†	25.000	354.320	3750.57	836.29	837.77	-83.33	40°07'29.049"N	104°52'10.675"W	0.00	

REFERENCE WELLPATH IDENTIFICATION			
Operator	KERR-MCGEE OIL & GAS ONSHORE LP	Slot	SLOT#42 TAIPAN 27C-15HZ (2192'FSL & 530'FEL, SEC.22)
Area	COLORADO	Well	TAIPAN 27C-15HZ
Field	WELD COUNTY (KERR MCGEE)	Wellbore	TAIPAN 27C-15HZ PWB
Facility	SEC.22-T2N-R67W		

WELLPATH DATA (156 stations) † = interpolated/extrapolated station										
MD [ft]	Inclination [°]	Azimuth [°]	TVD [ft]	Vert Sect [ft]	North [ft]	East [ft]	Latitude	Longitude	DLS [°/100ft]	Comments
4017.00†	25.000	354.320	3841.20	878.27	879.82	-87.51	40°07'29.464"N	104°52'10.728"W	0.00	
4117.00†	25.000	354.320	3931.83	920.25	921.88	-91.69	40°07'29.880"N	104°52'10.782"W	0.00	
4217.00†	25.000	354.320	4022.46	962.23	963.93	-95.87	40°07'30.296"N	104°52'10.836"W	0.00	
4313.59†	25.000	354.320	4110.00	1002.78	1004.55	-99.91	40°07'30.697"N	104°52'10.888"W	0.00	Parkman
4317.00†	25.000	354.320	4113.09	1004.21	1005.99	-100.06	40°07'30.711"N	104°52'10.890"W	0.00	
4417.00†	25.000	354.320	4203.73	1046.19	1048.04	-104.24	40°07'31.127"N	104°52'10.944"W	0.00	
4517.00†	25.000	354.320	4294.36	1088.17	1090.09	-108.42	40°07'31.542"N	104°52'10.998"W	0.00	
4617.00†	25.000	354.320	4384.99	1130.15	1132.15	-112.60	40°07'31.958"N	104°52'11.052"W	0.00	
4717.00†	25.000	354.320	4475.62	1172.13	1174.20	-116.79	40°07'32.374"N	104°52'11.105"W	0.00	
4782.52†	25.000	354.320	4535.00	1199.64	1201.76	-119.53	40°07'32.646"N	104°52'11.141"W	0.00	Sussex
4817.00†	25.000	354.320	4566.25	1214.11	1216.26	-120.97	40°07'32.789"N	104°52'11.159"W	0.00	
4917.00†	25.000	354.320	4656.88	1256.09	1258.31	-125.15	40°07'33.205"N	104°52'11.213"W	0.00	
5017.00†	25.000	354.320	4747.51	1298.07	1300.37	-129.34	40°07'33.620"N	104°52'11.267"W	0.00	
5117.00†	25.000	354.320	4838.14	1340.05	1342.42	-133.52	40°07'34.036"N	104°52'11.321"W	0.00	
5217.00†	25.000	354.320	4928.77	1382.03	1384.47	-137.70	40°07'34.452"N	104°52'11.375"W	0.00	
5317.00†	25.000	354.320	5019.40	1424.01	1426.53	-141.88	40°07'34.867"N	104°52'11.429"W	0.00	
5417.00†	25.000	354.320	5110.03	1465.99	1468.58	-146.07	40°07'35.283"N	104°52'11.482"W	0.00	
5517.00†	25.000	354.320	5200.66	1507.97	1510.64	-150.25	40°07'35.698"N	104°52'11.536"W	0.00	
5617.00†	25.000	354.320	5291.30	1549.96	1552.69	-154.43	40°07'36.114"N	104°52'11.590"W	0.00	
5717.00†	25.000	354.320	5381.93	1591.94	1594.75	-158.61	40°07'36.529"N	104°52'11.644"W	0.00	
5817.00†	25.000	354.320	5472.56	1633.92	1636.80	-162.80	40°07'36.945"N	104°52'11.698"W	0.00	
5917.00†	25.000	354.320	5563.19	1675.90	1678.85	-166.98	40°07'37.361"N	104°52'11.752"W	0.00	
6017.00†	25.000	354.320	5653.82	1717.88	1720.91	-171.16	40°07'37.776"N	104°52'11.805"W	0.00	
6117.00†	25.000	354.320	5744.45	1759.86	1762.96	-175.35	40°07'38.192"N	104°52'11.859"W	0.00	
6217.00†	25.000	354.320	5835.08	1801.84	1805.02	-179.53	40°07'38.607"N	104°52'11.913"W	0.00	
6317.00†	25.000	354.320	5925.71	1843.82	1847.07	-183.71	40°07'39.023"N	104°52'11.967"W	0.00	
6417.00†	25.000	354.320	6016.34	1885.80	1889.13	-187.89	40°07'39.439"N	104°52'12.021"W	0.00	
6517.00†	25.000	354.320	6106.97	1927.78	1931.18	-192.08	40°07'39.854"N	104°52'12.075"W	0.00	
6617.00†	25.000	354.320	6197.60	1969.76	1973.23	-196.26	40°07'40.270"N	104°52'12.129"W	0.00	
6717.00†	25.000	354.320	6288.23	2011.74	2015.29	-200.44	40°07'40.685"N	104°52'12.182"W	0.00	
6817.00†	25.000	354.320	6378.86	2053.72	2057.34	-204.62	40°07'41.101"N	104°52'12.236"W	0.00	
6917.00†	25.000	354.320	6469.50	2095.70	2099.40	-208.81	40°07'41.516"N	104°52'12.290"W	0.00	
7017.00†	25.000	354.320	6560.13	2137.68	2141.45	-212.99	40°07'41.932"N	104°52'12.344"W	0.00	
7117.00†	25.000	354.320	6650.76	2179.66	2183.51	-217.17	40°07'42.348"N	104°52'12.398"W	0.00	
7217.00†	25.000	354.320	6741.39	2221.64	2225.56	-221.36	40°07'42.763"N	104°52'12.452"W	0.00	
7317.00†	25.000	354.320	6832.02	2263.62	2267.61	-225.54	40°07'43.179"N	104°52'12.506"W	0.00	
7417.00†	25.000	354.320	6922.65	2305.60	2309.67	-229.72	40°07'43.594"N	104°52'12.559"W	0.00	
7517.00†	25.000	354.320	7013.28	2347.58	2351.72	-233.90	40°07'44.010"N	104°52'12.613"W	0.00	
7591.11	25.000	354.320	7080.45	2378.69	2382.89	-237.00	40°07'44.318"N	104°52'12.653"W	0.00	BUILD @ 6/100
7617.00†	26.536	354.850	7103.76	2389.88	2394.09	-238.06	40°07'44.429"N	104°52'12.667"W	6.00	
7717.00†	32.484	356.460	7190.75	2438.90	2443.19	-241.73	40°07'44.914"N	104°52'12.714"W	6.00	
7817.00†	38.447	357.617	7272.16	2496.77	2501.11	-244.68	40°07'45.486"N	104°52'12.752"W	6.00	
7907.11†	43.827	358.425	7340.00	2555.95	2560.33	-246.71	40°07'46.071"N	104°52'12.778"W	6.00	NBRR
7917.00†	44.418	358.504	7347.10	2562.83	2567.21	-246.89	40°07'46.139"N	104°52'12.780"W	6.00	
7986.60†	48.577	359.017	7395.00	2613.26	2617.67	-247.98	40°07'46.638"N	104°52'12.794"W	6.00	N470_B_CK

REFERENCE WELLPATH IDENTIFICATION			
Operator	KERR-MCGEE OIL & GAS ONSHORE LP	Slot	SLOT#42 TAIPAN 27C-15HZ (2192'FSL & 530'FEL, SEC.22)
Area	COLORADO	Well	TAIPAN 27C-15HZ
Field	WELD COUNTY (KERR MCGEE)	Wellbore	TAIPAN 27C-15HZ PWB
Facility	SEC.22-T2N-R67W		

WELLPATH DATA (156 stations) † = interpolated/extrapolated station										
MD [ft]	Inclination [°]	Azimuth [°]	TVD [ft]	Vert Sect [ft]	North [ft]	East [ft]	Latitude	Longitude	DLS [°/100ft]	Comments
8017.00†	50.395	359.221	7414.75	2636.36	2640.78	-248.33	40°07'46.866"N	104°52'12.799"W	6.00	
8091.56†	54.854	359.678	7460.00	2695.58	2700.01	-248.89	40°07'47.452"N	104°52'12.806"W	6.00	N700_C_CK
8117.00†	56.375	359.823	7474.37	2716.57	2721.01	-248.98	40°07'47.659"N	104°52'12.807"W	6.00	
8217.00†	62.358	0.346	7525.30	2802.56	2807.01	-248.85	40°07'48.509"N	104°52'12.806"W	6.00	
8317.00†	68.343	0.815	7566.99	2893.41	2897.85	-247.92	40°07'49.407"N	104°52'12.794"W	6.00	
8344.68	70.000	0.938	7576.83	2919.27	2923.72	-247.52	40°07'49.662"N	104°52'12.789"W	6.00	BUILD @ 8 /100
8386.59†	73.353	0.938	7590.00	2959.05	2963.49	-246.87	40°07'50.056"N	104°52'12.780"W	8.00	FRHS
8417.00†	75.786	0.938	7598.09	2988.37	2992.80	-246.39	40°07'50.345"N	104°52'12.774"W	8.00	
8474.74†	80.405	0.938	7610.00	3044.86	3049.28	-245.46	40°07'50.903"N	104°52'12.762"W	8.00	CDLL
8517.00†	83.786	0.938	7615.81	3086.70	3091.13	-244.78	40°07'51.317"N	104°52'12.753"W	8.00	
8599.56	90.390	0.938	7620.00	3169.11	3173.52	-243.43	40°07'52.131"N	104°52'12.736"W	8.00	LANDING POINT
8617.00†	90.390	0.938	7619.88	3186.55	3190.96	-243.14	40°07'52.303"N	104°52'12.732"W	0.00	
8717.00†	90.390	0.938	7619.20	3286.55	3290.94	-241.51	40°07'53.291"N	104°52'12.711"W	0.00	
8817.00†	90.390	0.938	7618.52	3386.55	3390.93	-239.87	40°07'54.279"N	104°52'12.690"W	0.00	
8917.00†	90.390	0.938	7617.84	3486.54	3490.91	-238.24	40°07'55.268"N	104°52'12.669"W	0.00	
9017.00†	90.390	0.938	7617.16	3586.54	3590.90	-236.60	40°07'56.256"N	104°52'12.648"W	0.00	
9117.00†	90.390	0.938	7616.48	3686.54	3690.88	-234.96	40°07'57.244"N	104°52'12.627"W	0.00	
9217.00†	90.390	0.938	7615.79	3786.54	3790.87	-233.33	40°07'58.232"N	104°52'12.606"W	0.00	
9317.00†	90.390	0.938	7615.11	3886.54	3890.85	-231.69	40°07'59.220"N	104°52'12.585"W	0.00	
9417.00†	90.390	0.938	7614.43	3986.53	3990.83	-230.05	40°08'00.208"N	104°52'12.564"W	0.00	
9517.00†	90.390	0.938	7613.75	4086.53	4090.82	-228.42	40°08'01.196"N	104°52'12.543"W	0.00	
9617.00†	90.390	0.938	7613.07	4186.53	4190.80	-226.78	40°08'02.184"N	104°52'12.522"W	0.00	
9717.00†	90.390	0.938	7612.39	4286.53	4290.79	-225.14	40°08'03.172"N	104°52'12.501"W	0.00	
9817.00†	90.390	0.938	7611.70	4386.52	4390.77	-223.51	40°08'04.160"N	104°52'12.480"W	0.00	
9917.00†	90.390	0.938	7611.02	4486.52	4490.76	-221.87	40°08'05.148"N	104°52'12.459"W	0.00	
10017.00†	90.390	0.938	7610.34	4586.52	4590.74	-220.23	40°08'06.136"N	104°52'12.438"W	0.00	
10067.09†	90.390	0.938	7610.00	4636.61	4640.82	-219.41	40°08'06.631"N	104°52'12.427"W	0.00	CDLL
10117.00†	90.390	0.938	7609.66	4686.52	4690.72	-218.60	40°08'07.124"N	104°52'12.416"W	0.00	
10217.00†	90.390	0.938	7608.98	4786.51	4790.71	-216.96	40°08'08.112"N	104°52'12.395"W	0.00	
10317.00†	90.390	0.938	7608.30	4886.51	4890.69	-215.32	40°08'09.100"N	104°52'12.374"W	0.00	
10417.00†	90.390	0.938	7607.62	4986.51	4990.68	-213.69	40°08'10.088"N	104°52'12.353"W	0.00	
10517.00†	90.390	0.938	7606.93	5086.51	5090.66	-212.05	40°08'11.076"N	104°52'12.332"W	0.00	
10617.00†	90.390	0.938	7606.25	5186.50	5190.65	-210.42	40°08'12.064"N	104°52'12.311"W	0.00	
10717.00†	90.390	0.938	7605.57	5286.50	5290.63	-208.78	40°08'13.053"N	104°52'12.290"W	0.00	
10817.00†	90.390	0.938	7604.89	5386.50	5390.61	-207.14	40°08'14.041"N	104°52'12.269"W	0.00	
10917.00†	90.390	0.938	7604.21	5486.50	5490.60	-205.51	40°08'15.029"N	104°52'12.248"W	0.00	
11017.00†	90.390	0.938	7603.53	5586.50	5590.58	-203.87	40°08'16.017"N	104°52'12.227"W	0.00	
11117.00†	90.390	0.938	7602.84	5686.49	5690.57	-202.23	40°08'17.005"N	104°52'12.206"W	0.00	
11217.00†	90.390	0.938	7602.16	5786.49	5790.55	-200.60	40°08'17.993"N	104°52'12.185"W	0.00	
11317.00†	90.390	0.938	7601.48	5886.49	5890.54	-198.96	40°08'18.981"N	104°52'12.164"W	0.00	
11417.00†	90.390	0.938	7600.80	5986.49	5990.52	-197.32	40°08'19.969"N	104°52'12.143"W	0.00	
11517.00†	90.390	0.938	7600.12	6086.48	6090.50	-195.69	40°08'20.957"N	104°52'12.122"W	0.00	
11617.00†	90.390	0.938	7599.44	6186.48	6190.49	-194.05	40°08'21.945"N	104°52'12.101"W	0.00	
11717.00†	90.390	0.938	7598.76	6286.48	6290.47	-192.41	40°08'22.933"N	104°52'12.080"W	0.00	
11817.00†	90.390	0.938	7598.07	6386.48	6390.46	-190.78	40°08'23.921"N	104°52'12.058"W	0.00	

REFERENCE WELLPATH IDENTIFICATION			
Operator	KERR-MCGEE OIL & GAS ONSHORE LP	Slot	SLOT#42 TAIPAN 27C-15HZ (2192'FSL & 530'FEL, SEC.22)
Area	COLORADO	Well	TAIPAN 27C-15HZ
Field	WELD COUNTY (KERR MCGEE)	Wellbore	TAIPAN 27C-15HZ PWB
Facility	SEC.22-T2N-R67W		

WELLPATH DATA (156 stations) † = interpolated/extrapolated station										
MD [ft]	Inclination [°]	Azimuth [°]	TVD [ft]	Vert Sect [ft]	North [ft]	East [ft]	Latitude	Longitude	DLS [°/100ft]	Comments
11917.00†	90.390	0.938	7597.39	6486.47	6490.44	-189.14	40°08'24.909"N	104°52'12.037"W	0.00	
12017.00†	90.390	0.938	7596.71	6586.47	6590.43	-187.50	40°08'25.897"N	104°52'12.016"W	0.00	
12117.00†	90.390	0.938	7596.03	6686.47	6690.41	-185.87	40°08'26.885"N	104°52'11.995"W	0.00	
12217.00†	90.390	0.938	7595.35	6786.47	6790.39	-184.23	40°08'27.873"N	104°52'11.974"W	0.00	
12317.00†	90.390	0.938	7594.67	6886.47	6890.38	-182.60	40°08'28.861"N	104°52'11.953"W	0.00	
12417.00†	90.390	0.938	7593.98	6986.46	6990.36	-180.96	40°08'29.849"N	104°52'11.932"W	0.00	
12517.00†	90.390	0.938	7593.30	7086.46	7090.35	-179.32	40°08'30.838"N	104°52'11.911"W	0.00	
12617.00†	90.390	0.938	7592.62	7186.46	7190.33	-177.69	40°08'31.826"N	104°52'11.890"W	0.00	
12717.00†	90.390	0.938	7591.94	7286.46	7290.32	-176.05	40°08'32.814"N	104°52'11.869"W	0.00	
12817.00†	90.390	0.938	7591.26	7386.45	7390.30	-174.41	40°08'33.802"N	104°52'11.848"W	0.00	
12917.00†	90.390	0.938	7590.58	7486.45	7490.28	-172.78	40°08'34.790"N	104°52'11.827"W	0.00	
13001.65†	90.390	0.938	7590.00	7571.09	7574.92	-171.39	40°08'35.626"N	104°52'11.809"W	0.00	FRHS
13017.00†	90.390	0.938	7589.90	7586.45	7590.27	-171.14	40°08'35.778"N	104°52'11.806"W	0.00	
13117.00†	90.390	0.938	7589.21	7686.45	7690.25	-169.50	40°08'36.766"N	104°52'11.785"W	0.00	
13217.00†	90.390	0.938	7588.53	7786.44	7790.24	-167.87	40°08'37.754"N	104°52'11.764"W	0.00	
13317.00†	90.390	0.938	7587.85	7886.44	7890.22	-166.23	40°08'38.742"N	104°52'11.743"W	0.00	
13417.00†	90.390	0.938	7587.17	7986.44	7990.21	-164.59	40°08'39.730"N	104°52'11.721"W	0.00	
13517.00†	90.390	0.938	7586.49	8086.44	8090.19	-162.96	40°08'40.718"N	104°52'11.700"W	0.00	
13617.00†	90.390	0.938	7585.81	8186.44	8190.17	-161.32	40°08'41.706"N	104°52'11.679"W	0.00	
13717.00†	90.390	0.938	7585.12	8286.43	8290.16	-159.68	40°08'42.694"N	104°52'11.658"W	0.00	
13735.28	90.390	0.938	7585.00 <sup>1</sup>	8304.72	8308.44	-159.39	40°08'42.875"N	104°52'11.654"W	0.00	TOTAL DEPTH

HOLE & CASING SECTIONS - Ref Wellbore: TAIPAN 27C-15HZ PWB Ref Wellpath: TAIPAN 27C-15HZ (PERMIT REV-1) PWP									
String/Diameter	Start MD [ft]	End MD [ft]	Interval [ft]	Start TVD [ft]	End TVD [ft]	Start N/S [ft]	Start E/W [ft]	End N/S [ft]	End E/W [ft]
13.5in Open Hole	17.00	1206.00	1189.00	17.00	1206.00	0.00	0.00	0.00	0.00
9.625in Casing Surface	17.00	1206.00	1189.00	17.00	1206.00	0.00	0.00	0.00	0.00
8.75in Open Hole	1006.00	8599.56	7593.56	1006.00	7620.00	0.00	0.00	3173.52	-243.43
7in Casing Intermediate	17.00	8559.56	8542.56	17.00	7619.16	0.00	0.00	3133.54	-244.08
6.125in Open Hole	8559.56	13735.28	5175.72	7619.16	7585.00	3133.54	-244.08	8308.44	-159.39
4.5in Open Hole	17.00	13735.28	13718.28	17.00	7585.00	0.00	0.00	8308.44	-159.39



REFERENCE WELLPATH IDENTIFICATION			
Operator	KERR-MCGEE OIL & GAS ONSHORE LP	Slot	SLOT#42 TAIPAN 27C-15HZ (2192'FSL & 530'FEL, SEC.22)
Area	COLORADO	Well	TAIPAN 27C-15HZ
Field	WELD COUNTY (KERR MCGEE)	Wellbore	TAIPAN 27C-15HZ PWB
Facility	SEC.22-T2N-R67W		

TARGETS									
Name	MD [ft]	TVD [ft]	North [ft]	East [ft]	Grid East [US ft]	Grid North [US ft]	Latitude	Longitude	Shape
SEC.15-T2N-67W SECTION LINES		0.00	13005.80	-2680.32	3173592.05	1301060.42	40°09'29.293"N	104°52'44.123"W	polygon
SEC.22-T2N-R67W SECTION LINES		0.00	2465.76	-3816.78	3172530.63	1290513.02	40°07'45.134"N	104°52'58.739"W	polygon
1) TAPIAN 27C-15HZ BHL ON PLAT (50'FNL & 743'FEL, SEC.23) REV-1	13735.28	7585.00	8308.44	-159.39	3176146.22	1296381.31	40°08'42.875"N	104°52'11.654"W	point

SURVEY PROGRAM - Ref Wellbore: TAIPAN 27C-15HZ PWB Ref Wellpath: TAIPAN 27C-15HZ (PERMIT REV-1) PWP				
Start MD [ft]	End MD [ft]	Positional Uncertainty Model	Log Name/Comment	Wellbore
17.00	13735.28	NaviTrak (IFR)		TAIPAN 27C-15HZ PWB



REFERENCE WELLPATH IDENTIFICATION			
Operator	KERR-MCGEE OIL & GAS ONSHORE LP	Slot	SLOT#42 TAIPAN 27C-15HZ (2192'FSL & 530'FEL, SEC.22)
Area	COLORADO	Well	TAIPAN 27C-15HZ
Field	WELD COUNTY (KERR MCGEE)	Wellbore	TAIPAN 27C-15HZ PWB
Facility	SEC.22-T2N-R67W		

WELLPATH COMMENTS				
MD [ft]	Inclination [°]	Azimuth [°]	TVD [ft]	Comment
687.00	0.000	354.320	687.00	Base Fox Hills
2829.54	25.000	354.320	2765.00	SSPG
4313.59	25.000	354.320	4110.00	Parkman
4782.52	25.000	354.320	4535.00	Sussex
7907.11	43.827	358.425	7340.00	NBRR
7986.60	48.577	359.017	7395.00	N470_B_CK
8091.56	54.854	359.678	7460.00	N700_C_CK
8386.59	73.353	0.938	7590.00	FRHS
8474.74	80.405	0.938	7610.00	CDLL
10067.09	90.390	0.938	7610.00	CDLL
13001.65	90.390	0.938	7590.00	FRHS

DESIGN COMMENTS				
MD [ft]	Inclination [°]	Azimuth [°]	TVD [ft]	Comment
17.00	0.000	354.320	17.00	TIE-ON
1310.00	0.000	354.320	1310.00	BEGIN NUDGE
2560.00	25.000	354.320	2520.71	END NUDGE
7591.11	25.000	354.320	7080.45	BUILD @ 6/100
8344.68	70.000	0.938	7576.83	BUILD @ 8 /100
8599.56	90.390	0.938	7620.00	LANDING POINT
13735.28	90.390	0.938	7585.00	TOTAL DEPTH