

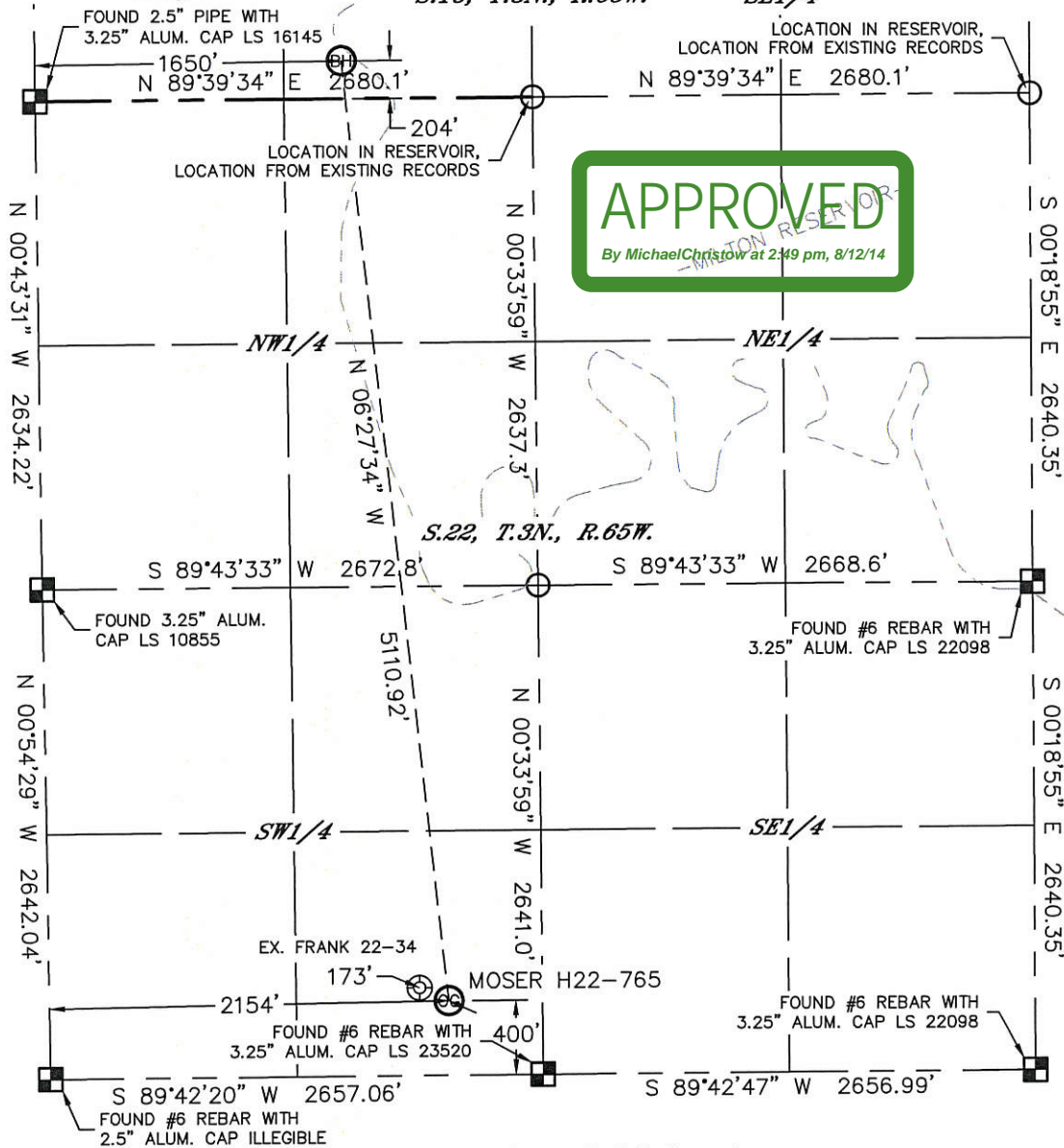


Lat40°, Inc. 1635 Foxtrail Drive, Suite 325 Loveland, CO 970-776-3321

WELL LOCATION CERTIFICATE

SECTION: 22
TOWNSHIP: 3N
RANGE: 65W

THIS MAP DOES NOT REPRESENT A BOUNDARY SURVEY
S.15, T.3N., R.65W. SE1/4



In accordance with a request from Mike Rodine with Noble Energy Inc.

Lat40°, Inc. has determined the surface location of the MOSER H22-765 to be 400' from the SOUTH line and 2154' from the WEST line as measured at right angles from the section lines of Section 22, Township 3 North, Range 65 West and the bottom hole to be 204' from the SOUTH line and 1650' from the WEST line as measured at right angles from the section lines of Section 15, Township 3 North, Range 65 West of the Sixth Principal Meridian, County of Weld, State of Colorado.

I hereby state that this Well Location Certificate was prepared by me, or under my direct supervision, that the fieldwork was completed on 3/13/2014, for and on behalf of Noble Energy Inc. That this is not a Land Survey Plat or an Improvement Survey Plat, and that it is not to be relied upon for establishment of fence, building, or other future improvement lines.

SURFACE LOCATION

LAT: 40.20476N
LONG: 104.65157W
PDOP: 2.2
ELEV: 4810'
1/4, 1/4: SESW

BOTTOM HOLE

LAT: 40.21872N
LONG: 104.65345W

NOTE:

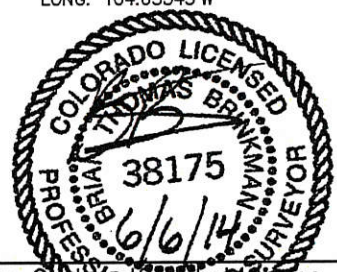
- 1) Bearings shown are Grid Bearings of the Colorado State Plane Coordinate System, North Zone, North American Datum 1983/2007. The lined dimensions as contained herein are based upon the "U.S. Survey Foot."
 - 2) Ground elevations are based on an observed GPS elevation (NAVD 1988 DATUM).
 - 3) IMPROVEMENTS: See LOCATION DRAWING for all visible improvements within 500' of disturbed area.
 - 4) SURFACE USE: CROP LAND
 - 5) INSTRUMENT OPERATOR: BRIAN ROTTINGHAUS
 - 6) NEAREST EXISTING WELL: FRANK 22-34, 173' NW
- NEAREST CULTURAL ITEMS:
BUILDING: 1092' NE
BUILDING UNIT: 1093' NE
HIGH OCCUPANCY BUILDING UNIT: 5280'+
DESIGNATED OUTSIDE ACTIVITY AREA: 5280'+
PUBLIC ROAD: 388' S (CR 30)
ABOVEGROUND UTILITY: 427' S
RAILROAD: 5280'+
PROPERTY LINE: 400' S

LEGEND

- = ALIQUOT MONUMENT AS DESCRIBED
○ = CALCULATED POSITION

SHEET 1 OF 2

Brian T. Brinkman—Owner of Lat40°, Inc.
Colorado Licensed Professional Land Surveyor No. 38175
DATE: 6/6/2014
PROJECT#: 2013178



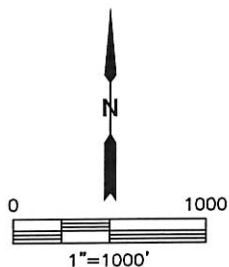
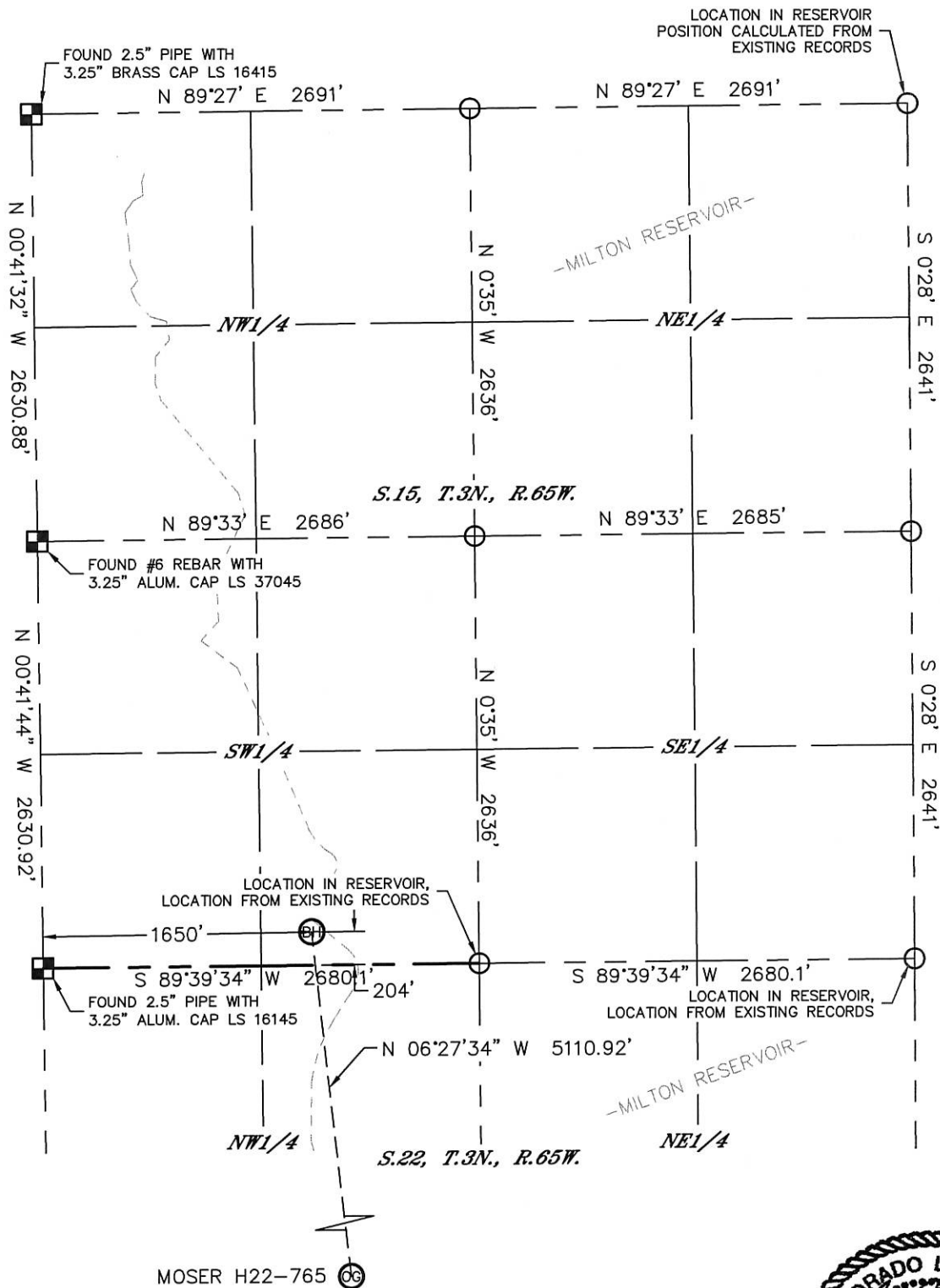


Lat40°, Inc. 1635 Foxtrail Drive, Suite 325 Loveland, CO 970-776-3321

WELL LOCATION CERTIFICATE

THIS MAP DOES NOT REPRESENT A BOUNDARY SURVEY

SECTION: 22
TOWNSHIP: 3N
RANGE: 65W

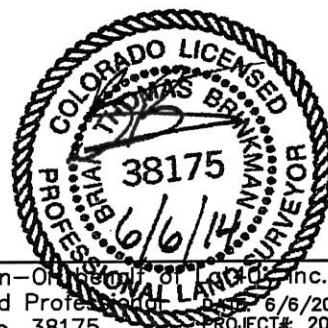


LEGEND

- = ALIQUOT MONUMENT AS DESCRIBED
- = CALCULATED POSITION

SHEET 2 OF 2

Brian T. Brinkman—Owner of Lat40°, Inc.
Colorado Licensed Professional Land Surveyor
Land Surveyor No. 38175
6/6/2014
PROJECT#: 2013178



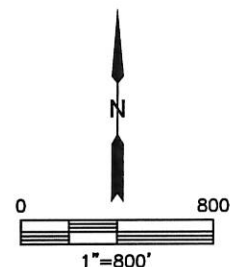
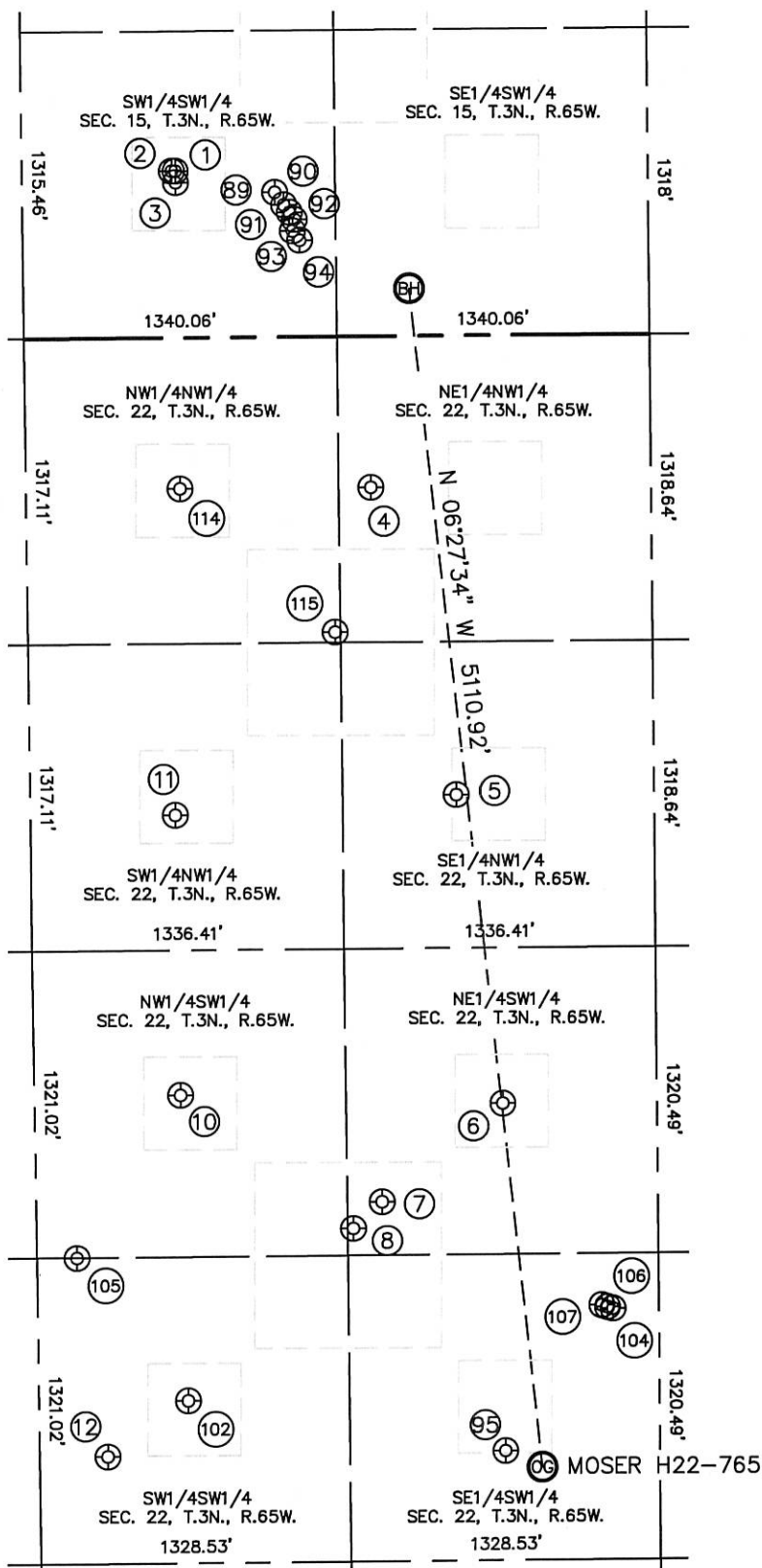


Lat40°, Inc. 1635 Foxtrail Drive, Suite 325 Loveland, CO 970-776-3321

SITE SKETCH

MOSER H22-765

SECTION: 22
TOWNSHIP: 3N
RANGE: 65W



SHEET 1 OF 2

DATE: 6/6/2014
PROJECT#: 2013178



Lat40°, Inc. 1635 Foxtrail Drive, Suite 325 Loveland, CO 970-776-3321

SITE SKETCH

MOSER H22-765

SECTION: 22
TOWNSHIP: 3N
RANGE: 65W

WELL NO.	WELL NAME	SHL FOOTAGE			SHL LAT°	SHL LONG°	PDOP	ELEV (FT.)	1/4/1/4	
1	FRICO 1-15XHZ	714	FSL	657	FWL	40.22012	-104.65701	1.8	4808	SWSW
2	FRICO 2-15HZ	714	FSL	641	FWL	40.22013	-104.65707	1.8	4808	SWSW
3	HSR-FRICO 13-15	665	FSL	656	FWL	40.21999	-104.65701	1.8	4807	SWSW
4	FRANK 22-21	651	FNL	1476	FWL	40.21637	-104.65407	1.8	4803	NENW
5	MULVERY 22-1	1976	FNL	1824	FWL	40.21273	-104.65281	1.8	4804	SENW
6	VICTOR E GOODHARD 22-1	1971	FSL	2005	FWL	40.20908	-104.65214	1.6	4805	NESW
7	GERALD J WARDELL GAS UT #1	1551	FSL	1482	FWL	40.20793	-104.65400	1.6	4806	NESW
8	MOSER 22-35	1437	FSL	1356	FWL	40.20762	-104.65445	1.6	4807	NESW
10	ROBERT C NICE 22-1	2017	FSL	626	FWL	40.20922	-104.65707	2.5	4808	NWSW
11	MD RADKE 22-1	2053	FNL	621	FWL	40.21253	-104.65711	2.7	4812	SWNW
12	MOSER H27-79HN	461	FSL	291	FWL	40.20495	-104.65824	3.0	4813	SWSW
89	FRICO 23-15	619	FSL	1081	FWL	40.21986	-104.65549	1.5	4804	SWSW
90	FRICO 14-15	567	FSL	1120	FWL	40.21972	-104.65536	1.5	4803	SWSW
91	FRICO 15-15	534	FSL	1143	FWL	40.21963	-104.65527	1.5	4803	SWSW
92	FRICO 16-15	503	FSL	1164	FWL	40.21954	-104.65519	1.2	4803	SWSW
93	FRICO 36-15	454	FSL	1155	FWL	40.21941	-104.65523	1.5	4803	SWSW
94	FRICO 37-15	414	FSL	1186	FWL	40.21929	-104.65512	2.2	4803	SWSW
95	FRANK 22-34	471	FSL	1996	FWL	40.20496	-104.65213	3.6	4809	SESW
102	FRANK 22-33	699	FSL	640	FWL	40.20560	-104.65699	2.1	4812	SWSW
104	MOSER PC H22-24	1081	FSL	2465	FWL	40.20663	-104.65047	1.7	4808	SESW
105	MOSER PC H22-33	1320	FSL	171	FWL	40.20731	-104.65869	1.4	4811	SWSW
106	MOSER PC H22-21D	1089	FSL	2441	FWL	40.20665	-104.65055	1.7	4808	SESW
107	FRANK PC H22-20D	1097	FSL	2418	FWL	40.20667	-104.65064	1.7	4808	SESW
114	SEYMOUR MENDELL 22-1	651	FNL	659	FWL	40.21638	-104.65699	2.0	4810	NWNW
115	FRANK 22-25	1273	FNL	1314	FWL	40.21467	-104.65464	2.8	4808	NWNW