

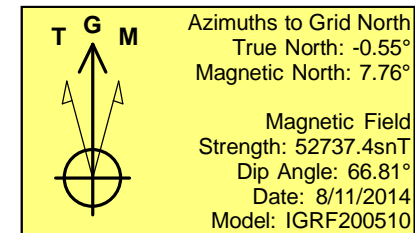
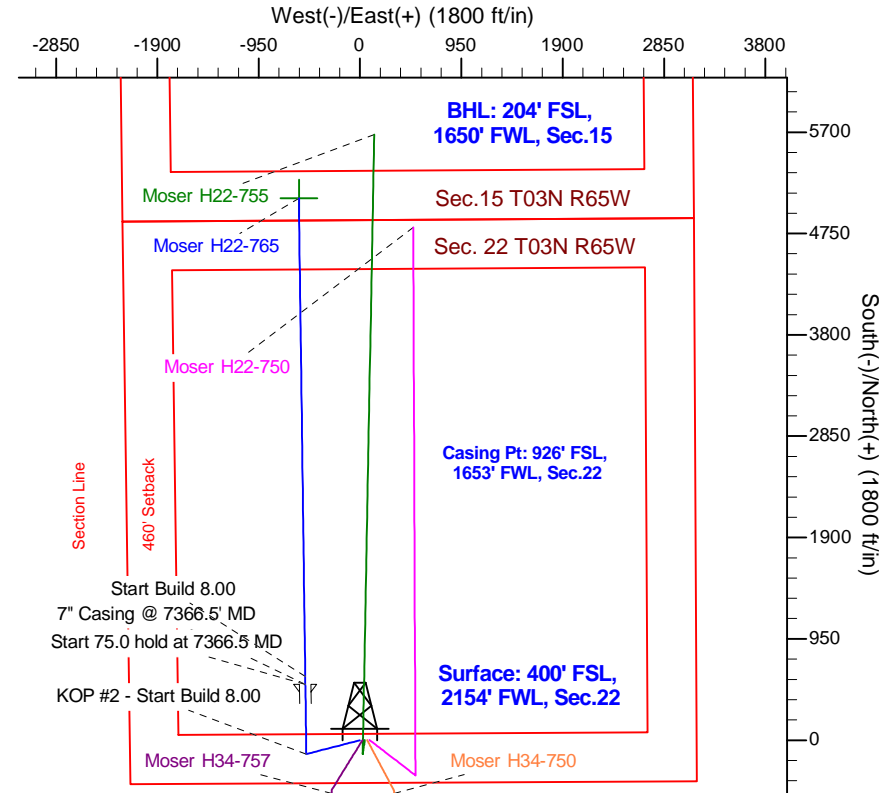
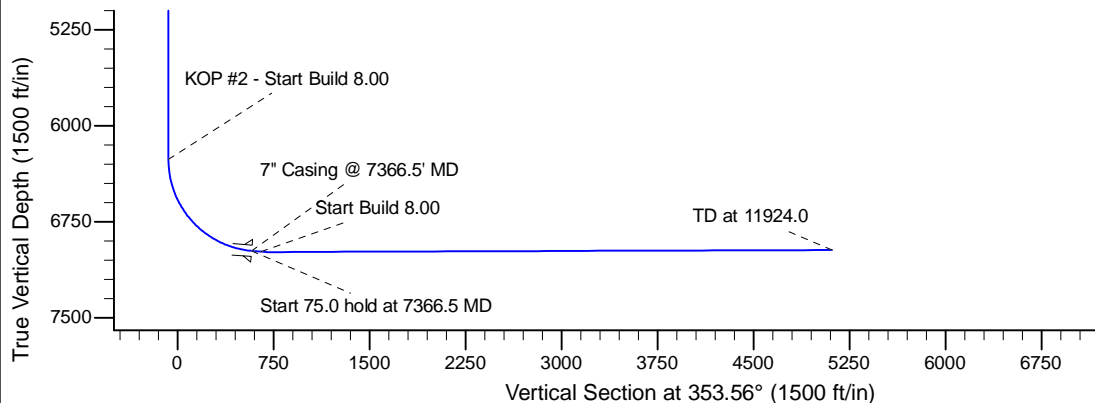
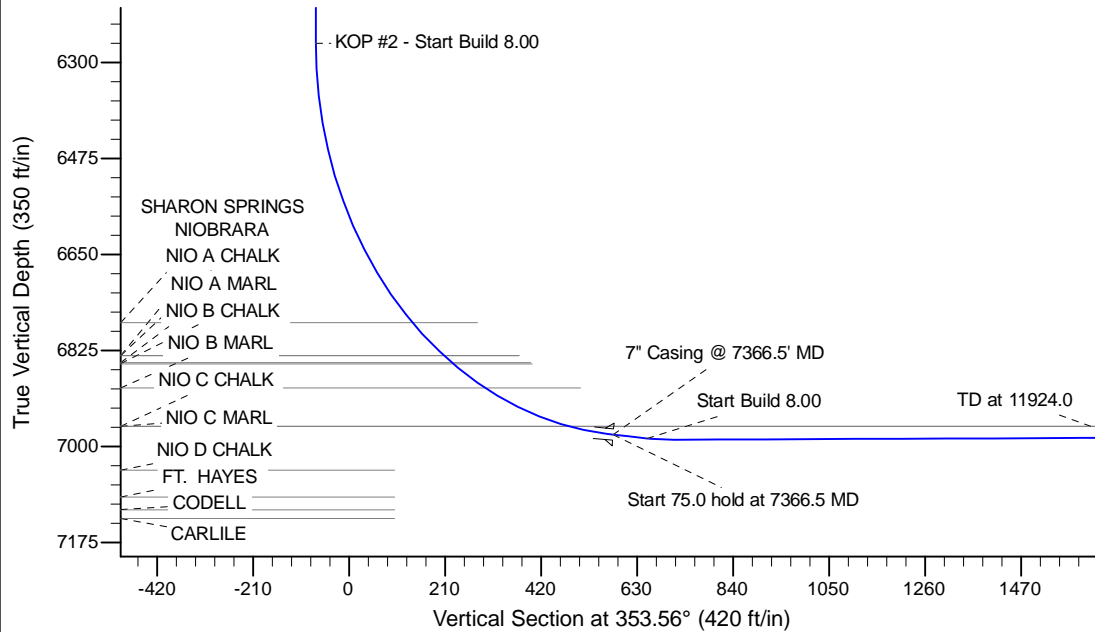
Project: Wattenberg Field
 Site: H (Sec.22-T3N-R65W) Weld County, CO
 Well: Moser H22-765
 Wellbore: Original Drilling
 Design: APD - Rev 0

Northern Region Drilling - Working

Geodetic System: US State Plane 1983
 Datum: North American Datum 1983
 Ellipsoid: GRS 1980
 Zone: Colorado Northern Zone
 System Datum: Mean Sea Level

SECTION DETAILS

Sec	MD	Inc	Azi	TVD	+N/-S	+E/-W	Dleg	TFace	VSec	Target
1	0.0	0.00	0.00	0.0	0.0	0.0	0.00	0.00	0.0	
2	1200.0	0.00	0.00	1200.0	0.0	0.0	0.00	0.00	0.0	
3	1651.9	9.04	255.54	1650.0	-8.9	-34.4	2.00	255.54	-5.0	
4	4512.3	9.04	255.54	4475.0	-121.1	-469.6	0.00	0.00	-67.7	
5	4964.3	0.00	0.00	4925.0	-130.0	-504.0	2.00	180.00	-72.6	
6	6304.0	0.00	0.00	6264.8	-130.0	-504.0	0.00	0.00	-72.6	
7	7366.5	85.00	359.23	6978.2	523.7	-512.7	8.00	359.23	577.9	
8	7441.5	85.00	359.23	6984.8	598.4	-513.7	0.00	0.00	652.3	
9	7506.6	90.21	359.23	6987.5	663.5	-514.6	8.00	0.00	717.0	
10	11924.0	90.21	359.23	6971.3	5080.4	-573.7	0.00	0.00	5112.7	Moser H22-765 BHL 204'FSL, 1650'FWL



WELL DETAILS: Moser H22-765

Ground Level: 4810.0					
0.0	0.0	1318570.11	3236973.43	40.204760	-104.651570

Plan: APD - Rev 0 (Moser H22-765/Original Drilling)

Created By: Shailey Jewell Date: 9:52, August 12 2014

OK to submit with 2A as per Noble Drilling
 8/12/2014 10:40