

Synergy Resources

Well Name: **SRC Wiedeman 12-5-4CHZ**

Surface Location: SRC Wiedeman Pad Sec.5-T5N-R66W
North American Datum 1983 , US State Plane 1983 , Colorado Northern Zone

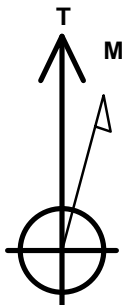
Ground Elevation: 4783.0

+N/-S	+E/-W	Northing	Easting	Latitude	Longitude	Slot
0.0	0.0	1401432.43	3194379.20	40.433233	-104.801726	

RKB - 13' WELL @ 4796.0ft (RKB - 13')

WELLBORE TARGET DETAILS

Name	TVD	+N/-S	+E/-W	Shape
SHL 1438'FNL & 2438'FEL, Sec. 5		0.0	0.0	Point
BHL 1664'FNL & 2189'FWL, Sec.4	7053.0	-157.3	4633.2	Point



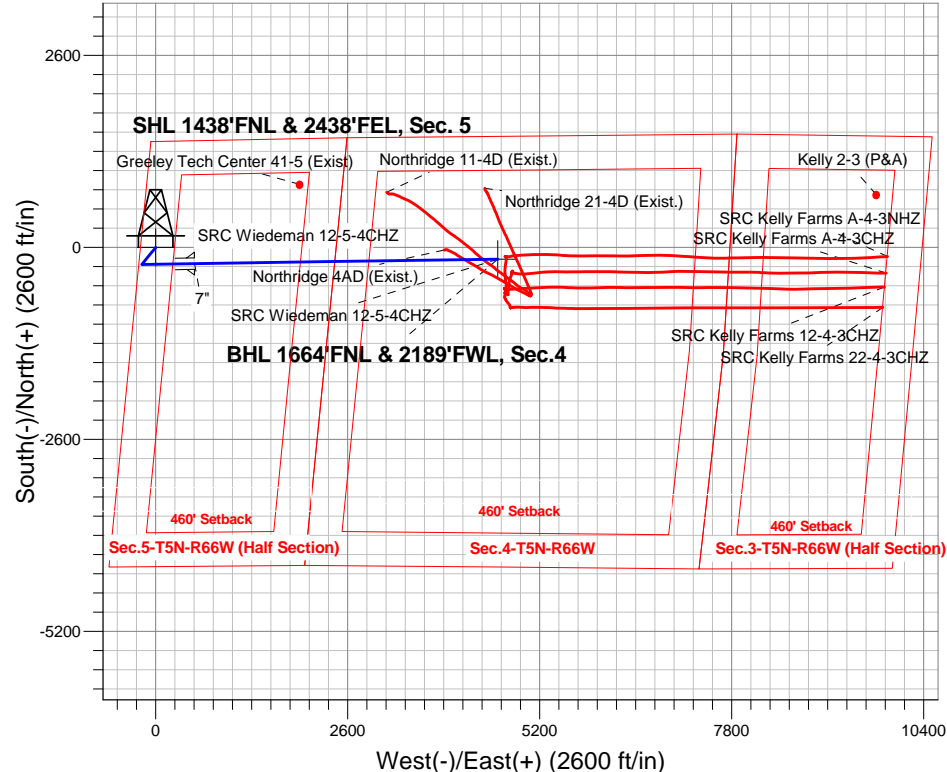
Azimuths to True North
Magnetic North: 8.45°

Magnetic Field
Strength: 52799.9snT
Dip Angle: 66.96°
Date: 9/24/2014
Model: IGRF2010

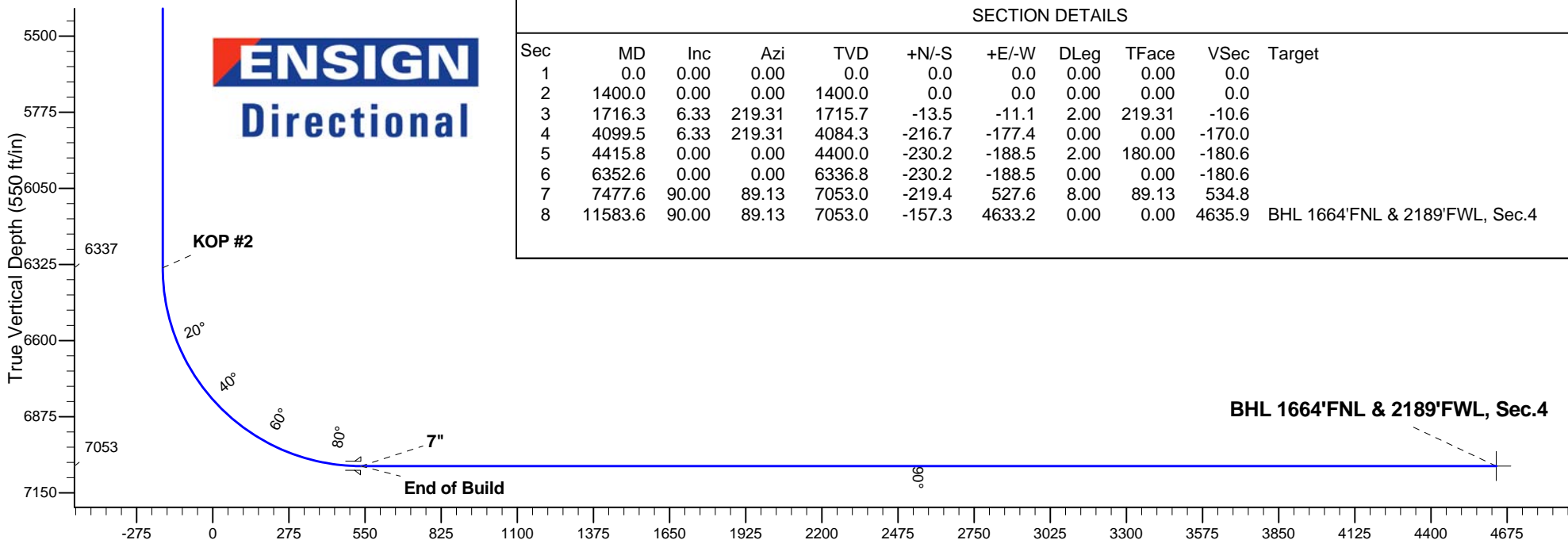
SRC Wiedeman Pad Sec.5-T5N-R66W
SRC Wiedeman 12-5-4CHZ
Plan #3 (9-24-14)
12:17, September 24 2014

ANNOTATIONS

TVD	MD	Annotation
1400.0	1400.0	KOP #1
6336.8	6352.6	KOP #2
7053.0	7477.6	End of Build



ENSIGN
Directional



SECTION DETAILS

Sec	MD	Inc	Azi	TVD	+N/-S	+E/-W	DLeg	TFace	VSec	Target
1	0.0	0.00	0.00	0.0	0.0	0.0	0.00	0.00	0.0	
2	1400.0	0.00	0.00	1400.0	0.0	0.0	0.00	0.00	0.0	
3	1716.3	6.33	219.31	1715.7	-13.5	-11.1	2.00	219.31	-10.6	
4	4099.5	6.33	219.31	4084.3	-216.7	-177.4	0.00	0.00	-170.0	
5	4415.8	0.00	0.00	4400.0	-230.2	-188.5	2.00	180.00	-180.6	
6	6352.6	0.00	0.00	6336.8	-230.2	-188.5	0.00	0.00	-180.6	
7	7477.6	90.00	89.13	7053.0	-219.4	527.6	8.00	89.13	534.8	
8	11583.6	90.00	89.13	7053.0	-157.3	4633.2	0.00	0.00	4635.9	BHL 1664'FNL & 2189'FWL, Sec.4

BHL 1664'FNL & 2189'FWL, Sec.4

Vertical Section at 91.94° (550 ft/in)



Synergy Resources

Sec.5-T5N-R66W

SRC Wiedeman Pad Sec.5-T5N-R66W

SRC Wiedeman 12-5-4CHZ

Wellbore #1

Plan: Plan #3 (9-24-14)

Standard Planning Report

24 September, 2014

Database:	Landmark	Local Co-ordinate Reference:	Well SRC Wiedeman 12-5-4CHZ
Company:	Synergy Resources	TVD Reference:	WELL @ 4796.0ft (RKB - 13')
Project:	Sec.5-T5N-R66W	MD Reference:	WELL @ 4796.0ft (RKB - 13')
Site:	SRC Wiedeman Pad Sec.5-T5N-R66W	North Reference:	True
Well:	SRC Wiedeman 12-5-4CHZ	Survey Calculation Method:	Minimum Curvature
Wellbore:	Wellbore #1		
Design:	Plan #3 (9-24-14)		

Project	Sec.5-T5N-R66W		
Map System:	US State Plane 1983	System Datum:	Mean Sea Level
Geo Datum:	North American Datum 1983		Using Well Reference Point
Map Zone:	Colorado Northern Zone		Using geodetic scale factor

Site						SRC Wiedeman Pad Sec.5-T5N-R66W											
Site Position:						Northing:			1,401,391.96 ft			Latitude:			40.433123		
From:			Lat/Long			Easting:			3,194,327.74 ft			Longitude:			-104.801912		
Position Uncertainty:			0.0 ft			Slot Radius:			"			Grid Convergence:			0.45 °		

Well	SRC Wiedeman 12-5-4CHZ					
Well Position	+N/-S	40.1 ft	Northing:	1,401,432.43 ft	Latitude:	40.433233
	+E/-W	51.8 ft	Easting:	3,194,379.20 ft	Longitude:	-104.801726
Position Uncertainty		0.0 ft	Wellhead Elevation:	ft	Ground Level:	4,783.0 ft

Wellbore	Wellbore #1				
Magnetics	Model Name	Sample Date	Declination (°)	Dip Angle (°)	Field Strength (nT)
	IGRF2010	9/24/2014	8.45	66.96	52,800

Design	Plan #3 (9-24-14)			
Audit Notes:				
Version:	Phase:	PROTOTYPE	Tie On Depth:	0.0
Vertical Section:	Depth From (TVD) (ft)	+N/-S (ft)	+E/-W (ft)	Direction (°)
	0.0	0.0	0.0	91.94

Plan Sections										
Measured Depth (ft)	Inclination (°)	Azimuth (°)	Vertical Depth (ft)	+N/-S (ft)	+E/-W (ft)	Dogleg Rate (°/100ft)	Build Rate (°/100ft)	Turn Rate (°/100ft)	TFO (°)	Target
0.0	0.00	0.00	0.0	0.0	0.0	0.00	0.00	0.00	0.00	
1,400.0	0.00	0.00	1,400.0	0.0	0.0	0.00	0.00	0.00	0.00	
1,716.3	6.33	219.31	1,715.7	-13.5	-11.1	2.00	2.00	0.00	219.31	
4,099.5	6.33	219.31	4,084.3	-216.7	-177.4	0.00	0.00	0.00	0.00	
4,415.8	0.00	0.00	4,400.0	-230.2	-188.5	2.00	-2.00	0.00	180.00	
6,352.6	0.00	0.00	6,336.8	-230.2	-188.5	0.00	0.00	0.00	0.00	
7,477.6	90.00	89.13	7,053.0	-219.4	527.6	8.00	8.00	0.00	89.13	
11,583.6	90.00	89.13	7,053.0	-157.3	4,633.2	0.00	0.00	0.00	0.00	BHL 1664'FNL & 21

Database:	Landmark	Local Co-ordinate Reference:	Well SRC Wiedeman 12-5-4CHZ
Company:	Synergy Resources	TVD Reference:	WELL @ 4796.0ft (RKB - 13')
Project:	Sec.5-T5N-R66W	MD Reference:	WELL @ 4796.0ft (RKB - 13')
Site:	SRC Wiedeman Pad Sec.5-T5N-R66W	North Reference:	True
Well:	SRC Wiedeman 12-5-4CHZ	Survey Calculation Method:	Minimum Curvature
Wellbore:	Wellbore #1		
Design:	Plan #3 (9-24-14)		

Planned Survey									
Measured Depth (ft)	Inclination (°)	Azimuth (°)	Vertical Depth (ft)	+N/-S (ft)	+E/-W (ft)	Vertical Section (ft)	Dogleg Rate (°/100ft)	Build Rate (°/100ft)	Turn Rate (°/100ft)
0.0	0.00	0.00	0.0	0.0	0.0	0.0	0.00	0.00	0.00
1.0	0.00	0.00	1.0	0.0	0.0	0.0	0.00	0.00	0.00
SHL 1438'FNL & 2438'FEL, Sec. 5									
100.0	0.00	0.00	100.0	0.0	0.0	0.0	0.00	0.00	0.00
200.0	0.00	0.00	200.0	0.0	0.0	0.0	0.00	0.00	0.00
300.0	0.00	0.00	300.0	0.0	0.0	0.0	0.00	0.00	0.00
400.0	0.00	0.00	400.0	0.0	0.0	0.0	0.00	0.00	0.00
500.0	0.00	0.00	500.0	0.0	0.0	0.0	0.00	0.00	0.00
600.0	0.00	0.00	600.0	0.0	0.0	0.0	0.00	0.00	0.00
700.0	0.00	0.00	700.0	0.0	0.0	0.0	0.00	0.00	0.00
800.0	0.00	0.00	800.0	0.0	0.0	0.0	0.00	0.00	0.00
900.0	0.00	0.00	900.0	0.0	0.0	0.0	0.00	0.00	0.00
1,000.0	0.00	0.00	1,000.0	0.0	0.0	0.0	0.00	0.00	0.00
1,100.0	0.00	0.00	1,100.0	0.0	0.0	0.0	0.00	0.00	0.00
1,200.0	0.00	0.00	1,200.0	0.0	0.0	0.0	0.00	0.00	0.00
1,300.0	0.00	0.00	1,300.0	0.0	0.0	0.0	0.00	0.00	0.00
1,400.0	0.00	0.00	1,400.0	0.0	0.0	0.0	0.00	0.00	0.00
KOP #1									
1,500.0	2.00	219.31	1,500.0	-1.4	-1.1	-1.1	2.00	2.00	0.00
1,600.0	4.00	219.31	1,599.8	-5.4	-4.4	-4.2	2.00	2.00	0.00
1,700.0	6.00	219.31	1,699.5	-12.1	-9.9	-9.5	2.00	2.00	0.00
1,716.3	6.33	219.31	1,715.7	-13.5	-11.1	-10.6	2.00	2.00	0.00
1,800.0	6.33	219.31	1,798.8	-20.6	-16.9	-16.2	0.00	0.00	0.00
1,900.0	6.33	219.31	1,898.2	-29.2	-23.9	-22.9	0.00	0.00	0.00
2,000.0	6.33	219.31	1,997.6	-37.7	-30.9	-29.6	0.00	0.00	0.00
2,100.0	6.33	219.31	2,097.0	-46.2	-37.8	-36.2	0.00	0.00	0.00
2,200.0	6.33	219.31	2,196.4	-54.7	-44.8	-42.9	0.00	0.00	0.00
2,300.0	6.33	219.31	2,295.8	-63.3	-51.8	-49.6	0.00	0.00	0.00
2,400.0	6.33	219.31	2,395.2	-71.8	-58.8	-56.3	0.00	0.00	0.00
2,500.0	6.33	219.31	2,494.6	-80.3	-65.8	-63.0	0.00	0.00	0.00
2,600.0	6.33	219.31	2,594.0	-88.8	-72.7	-69.7	0.00	0.00	0.00
2,700.0	6.33	219.31	2,693.4	-97.4	-79.7	-76.4	0.00	0.00	0.00
2,800.0	6.33	219.31	2,792.8	-105.9	-86.7	-83.1	0.00	0.00	0.00
2,900.0	6.33	219.31	2,892.1	-114.4	-93.7	-89.8	0.00	0.00	0.00
3,000.0	6.33	219.31	2,991.5	-123.0	-100.7	-96.4	0.00	0.00	0.00
3,100.0	6.33	219.31	3,090.9	-131.5	-107.7	-103.1	0.00	0.00	0.00
3,200.0	6.33	219.31	3,190.3	-140.0	-114.6	-109.8	0.00	0.00	0.00
3,300.0	6.33	219.31	3,289.7	-148.5	-121.6	-116.5	0.00	0.00	0.00
3,400.0	6.33	219.31	3,389.1	-157.1	-128.6	-123.2	0.00	0.00	0.00
3,500.0	6.33	219.31	3,488.5	-165.6	-135.6	-129.9	0.00	0.00	0.00
3,600.0	6.33	219.31	3,587.9	-174.1	-142.6	-136.6	0.00	0.00	0.00
3,700.0	6.33	219.31	3,687.3	-182.6	-149.5	-143.3	0.00	0.00	0.00
3,800.0	6.33	219.31	3,786.7	-191.2	-156.5	-149.9	0.00	0.00	0.00
3,900.0	6.33	219.31	3,886.1	-199.7	-163.5	-156.6	0.00	0.00	0.00
4,000.0	6.33	219.31	3,985.4	-208.2	-170.5	-163.3	0.00	0.00	0.00
4,099.5	6.33	219.31	4,084.3	-216.7	-177.4	-170.0	0.00	0.00	0.00
4,100.0	6.32	219.31	4,084.8	-216.7	-177.5	-170.0	2.00	-2.00	0.00
4,200.0	4.32	219.31	4,184.4	-223.9	-183.3	-175.6	2.00	-2.00	0.00
4,300.0	2.32	219.31	4,284.2	-228.4	-187.0	-179.1	2.00	-2.00	0.00
4,400.0	0.32	219.31	4,384.2	-230.2	-188.5	-180.5	2.00	-2.00	0.00
4,415.8	0.00	0.00	4,400.0	-230.2	-188.5	-180.6	2.00	-2.00	0.00
4,500.0	0.00	0.00	4,484.2	-230.2	-188.5	-180.6	0.00	0.00	0.00
4,600.0	0.00	0.00	4,584.2	-230.2	-188.5	-180.6	0.00	0.00	0.00
4,700.0	0.00	0.00	4,684.2	-230.2	-188.5	-180.6	0.00	0.00	0.00

Database:	Landmark	Local Co-ordinate Reference:	Well SRC Wiedeman 12-5-4CHZ
Company:	Synergy Resources	TVD Reference:	WELL @ 4796.0ft (RKB - 13')
Project:	Sec.5-T5N-R66W	MD Reference:	WELL @ 4796.0ft (RKB - 13')
Site:	SRC Wiedeman Pad Sec.5-T5N-R66W	North Reference:	True
Well:	SRC Wiedeman 12-5-4CHZ	Survey Calculation Method:	Minimum Curvature
Wellbore:	Wellbore #1		
Design:	Plan #3 (9-24-14)		

Planned Survey									
Measured Depth (ft)	Inclination (°)	Azimuth (°)	Vertical Depth (ft)	+N/-S (ft)	+E/-W (ft)	Vertical Section (ft)	Dogleg Rate (°/100ft)	Build Rate (°/100ft)	Turn Rate (°/100ft)
4,800.0	0.00	0.00	4,784.2	-230.2	-188.5	-180.6	0.00	0.00	0.00
4,900.0	0.00	0.00	4,884.2	-230.2	-188.5	-180.6	0.00	0.00	0.00
5,000.0	0.00	0.00	4,984.2	-230.2	-188.5	-180.6	0.00	0.00	0.00
5,100.0	0.00	0.00	5,084.2	-230.2	-188.5	-180.6	0.00	0.00	0.00
5,200.0	0.00	0.00	5,184.2	-230.2	-188.5	-180.6	0.00	0.00	0.00
5,300.0	0.00	0.00	5,284.2	-230.2	-188.5	-180.6	0.00	0.00	0.00
5,400.0	0.00	0.00	5,384.2	-230.2	-188.5	-180.6	0.00	0.00	0.00
5,500.0	0.00	0.00	5,484.2	-230.2	-188.5	-180.6	0.00	0.00	0.00
5,600.0	0.00	0.00	5,584.2	-230.2	-188.5	-180.6	0.00	0.00	0.00
5,700.0	0.00	0.00	5,684.2	-230.2	-188.5	-180.6	0.00	0.00	0.00
5,800.0	0.00	0.00	5,784.2	-230.2	-188.5	-180.6	0.00	0.00	0.00
5,900.0	0.00	0.00	5,884.2	-230.2	-188.5	-180.6	0.00	0.00	0.00
6,000.0	0.00	0.00	5,984.2	-230.2	-188.5	-180.6	0.00	0.00	0.00
6,100.0	0.00	0.00	6,084.2	-230.2	-188.5	-180.6	0.00	0.00	0.00
6,200.0	0.00	0.00	6,184.2	-230.2	-188.5	-180.6	0.00	0.00	0.00
6,300.0	0.00	0.00	6,284.2	-230.2	-188.5	-180.6	0.00	0.00	0.00
6,352.6	0.00	0.00	6,336.8	-230.2	-188.5	-180.6	0.00	0.00	0.00
KOP #2									
6,400.0	3.79	89.13	6,384.2	-230.2	-186.9	-179.0	8.00	8.00	0.00
6,500.0	11.79	89.13	6,483.2	-230.0	-173.4	-165.5	8.00	8.00	0.00
6,600.0	19.79	89.13	6,579.3	-229.6	-146.2	-138.3	8.00	8.00	0.00
6,700.0	27.79	89.13	6,670.7	-229.0	-105.9	-98.0	8.00	8.00	0.00
6,800.0	35.79	89.13	6,755.7	-228.2	-53.2	-45.5	8.00	8.00	0.00
6,900.0	43.79	89.13	6,832.4	-227.2	10.7	18.4	8.00	8.00	0.00
7,000.0	51.79	89.13	6,899.6	-226.1	84.7	92.3	8.00	8.00	0.00
7,100.0	59.79	89.13	6,955.7	-224.8	167.3	174.9	8.00	8.00	0.00
7,200.0	67.79	89.13	6,999.9	-223.5	257.0	264.4	8.00	8.00	0.00
7,300.0	75.79	89.13	7,031.1	-222.0	351.9	359.2	8.00	8.00	0.00
7,400.0	83.79	89.13	7,048.8	-220.5	450.2	457.4	8.00	8.00	0.00
7,477.6	90.00	89.13	7,053.0	-219.4	527.6	534.8	8.00	8.00	0.00
End of Build - 7"									
7,500.0	90.00	89.13	7,053.0	-219.0	550.0	557.1	0.00	0.00	0.00
7,600.0	90.00	89.13	7,053.0	-217.5	650.0	657.0	0.00	0.00	0.00
7,700.0	90.00	89.13	7,053.0	-216.0	750.0	756.9	0.00	0.00	0.00
7,800.0	90.00	89.13	7,053.0	-214.5	850.0	856.8	0.00	0.00	0.00
7,900.0	90.00	89.13	7,053.0	-213.0	950.0	956.7	0.00	0.00	0.00
8,000.0	90.00	89.13	7,053.0	-211.5	1,050.0	1,056.5	0.00	0.00	0.00
8,100.0	90.00	89.13	7,053.0	-210.0	1,150.0	1,156.4	0.00	0.00	0.00
8,200.0	90.00	89.13	7,053.0	-208.5	1,250.0	1,256.3	0.00	0.00	0.00
8,300.0	90.00	89.13	7,053.0	-206.9	1,349.9	1,356.2	0.00	0.00	0.00
8,400.0	90.00	89.13	7,053.0	-205.4	1,449.9	1,456.1	0.00	0.00	0.00
8,500.0	90.00	89.13	7,053.0	-203.9	1,549.9	1,555.9	0.00	0.00	0.00
8,600.0	90.00	89.13	7,053.0	-202.4	1,649.9	1,655.8	0.00	0.00	0.00
8,700.0	90.00	89.13	7,053.0	-200.9	1,749.9	1,755.7	0.00	0.00	0.00
8,800.0	90.00	89.13	7,053.0	-199.4	1,849.9	1,855.6	0.00	0.00	0.00
8,900.0	90.00	89.13	7,053.0	-197.9	1,949.9	1,955.5	0.00	0.00	0.00
9,000.0	90.00	89.13	7,053.0	-196.4	2,049.9	2,055.3	0.00	0.00	0.00
9,100.0	90.00	89.13	7,053.0	-194.8	2,149.8	2,155.2	0.00	0.00	0.00
9,200.0	90.00	89.13	7,053.0	-193.3	2,249.8	2,255.1	0.00	0.00	0.00
9,300.0	90.00	89.13	7,053.0	-191.8	2,349.8	2,355.0	0.00	0.00	0.00
9,400.0	90.00	89.13	7,053.0	-190.3	2,449.8	2,454.9	0.00	0.00	0.00
9,500.0	90.00	89.13	7,053.0	-188.8	2,549.8	2,554.7	0.00	0.00	0.00
9,600.0	90.00	89.13	7,053.0	-187.3	2,649.8	2,654.6	0.00	0.00	0.00
9,700.0	90.00	89.13	7,053.0	-185.8	2,749.8	2,754.5	0.00	0.00	0.00

Local Co-ordinate Reference:	Well SRC Wiedeman 12-5-4CHZ
TVD Reference:	WELL @ 4796.0ft (RKB - 13')
MD Reference:	WELL @ 4796.0ft (RKB - 13')
North Reference:	True
Survey Calculation Method:	Minimum Curvature

Measured Depth (ft)	Inclination (°)	Azimuth (°)	Vertical Depth (ft)	+N/-S (ft)	+E/-W (ft)	Vertical Section (ft)	Dogleg Rate (°/100ft)	Build Rate (°/100ft)	Turn Rate (°/100ft)
9,800.0	90.00	89.13	7,053.0	-184.3	2,849.8	2,854.4	0.00	0.00	0.00
9,900.0	90.00	89.13	7,053.0	-182.8	2,949.8	2,954.3	0.00	0.00	0.00
10,000.0	90.00	89.13	7,053.0	-181.2	3,049.7	3,054.1	0.00	0.00	0.00
10,100.0	90.00	89.13	7,053.0	-179.7	3,149.7	3,154.0	0.00	0.00	0.00
10,200.0	90.00	89.13	7,053.0	-178.2	3,249.7	3,253.9	0.00	0.00	0.00
10,300.0	90.00	89.13	7,053.0	-176.7	3,349.7	3,353.8	0.00	0.00	0.00
10,400.0	90.00	89.13	7,053.0	-175.2	3,449.7	3,453.7	0.00	0.00	0.00
10,500.0	90.00	89.13	7,053.0	-173.7	3,549.7	3,553.5	0.00	0.00	0.00
10,600.0	90.00	89.13	7,053.0	-172.2	3,649.7	3,653.4	0.00	0.00	0.00
10,700.0	90.00	89.13	7,053.0	-170.7	3,749.7	3,753.3	0.00	0.00	0.00
10,800.0	90.00	89.13	7,053.0	-169.1	3,849.7	3,853.2	0.00	0.00	0.00
10,900.0	90.00	89.13	7,053.0	-167.6	3,949.6	3,953.1	0.00	0.00	0.00
11,000.0	90.00	89.13	7,053.0	-166.1	4,049.6	4,052.9	0.00	0.00	0.00
11,100.0	90.00	89.13	7,053.0	-164.6	4,149.6	4,152.8	0.00	0.00	0.00
11,200.0	90.00	89.13	7,053.0	-163.1	4,249.6	4,252.7	0.00	0.00	0.00
11,300.0	90.00	89.13	7,053.0	-161.6	4,349.6	4,352.6	0.00	0.00	0.00
11,400.0	90.00	89.13	7,053.0	-160.1	4,449.6	4,452.5	0.00	0.00	0.00
11,500.0	90.00	89.13	7,053.0	-158.6	4,549.6	4,552.3	0.00	0.00	0.00
11,583.6	90.00	89.13	7,053.0	-157.3	4,633.2	4,635.9	0.00	0.00	0.00

BHL 1664'FNL & 2189'FWL, Sec.4

- hit/miss target - Shape	Dip Angle (°)	Dip Dir. (°)	TVD (ft)	+N/-S (ft)	+E/-W (ft)	Northing (ft)	Easting (ft)	Latitude	Longitude
SHL 1438'FNL & 2438' - plan hits target center - Point	0.00	0.00	1.0	0.0	0.0	1,401,432.44	3,194,379.20	40.433233	-104.801726
BHL 1664'FNL & 2189' - plan hits target center - Point	0.00	0.00	7,053.0	-157.3	4,633.2	1,401,311.62	3,199,013.30	40.432800	-104.785083

Measured Depth (ft)	Vertical Depth (ft)	Name	Casing Diameter (")	Hole Diameter (")
7,477.6	7,053.0	7"	7	7-1/2

Measured Depth (ft)	Vertical Depth (ft)	Local Coordinates		Comment
		+N/-S (ft)	+E/-W (ft)	
1,400.0	1,400.0	0.0	0.0	KOP #1
6,352.6	6,336.8	-230.2	-188.5	KOP #2
7,477.6	7,053.0	-219.4	527.6	End of Build



Synergy Resources

Sec.5-T5N-R66W

SRC Wiedeman Pad Sec.5-T5N-R66W

SRC Wiedeman 12-5-4CHZ

Wellbore #1

Plan #3 (9-24-14)

Anticollision Report

24 September, 2014

Company:	Synergy Resources	Local Co-ordinate Reference:	Well SRC Wiedeman 12-5-4CHZ
Project:	Sec.5-T5N-R66W	TVD Reference:	WELL @ 4796.0ft (RKB - 13')
Reference Site:	SRC Wiedeman Pad Sec.5-T5N-R66W	MD Reference:	WELL @ 4796.0ft (RKB - 13')
Site Error:	0.0ft	North Reference:	True
Reference Well:	SRC Wiedeman 12-5-4CHZ	Survey Calculation Method:	Minimum Curvature
Well Error:	0.0ft	Output errors are at	2.00 sigma
Reference Wellbore	Wellbore #1	Database:	Landmark
Reference Design:	Plan #3 (9-24-14)	Offset TVD Reference:	Offset Datum

Reference	Plan #3 (9-24-14)		
Filter type:	NO GLOBAL FILTER: Using user defined selection & filtering criteria		
Interpolation Method:	Stations	Error Model:	ISCWSA
Depth Range:	Unlimited	Scan Method:	Closest Approach 3D
Results Limited by:	Maximum center-center distance of 1,000.0ft	Error Surface:	Elliptical Conic
Warning Levels Evaluated at:	2.00 Sigma		

Survey Tool Program	Date 9/24/2014			
From (ft)	To (ft)	Survey (Wellbore)	Tool Name	Description
0.0	11,583.6	Plan #3 (9-24-14) (Wellbore #1)	MWD	MWD - Standard

Summary						
Site Name	Reference Measured Depth (ft)	Offset Measured Depth (ft)	Distance Between Centres (ft)	Distance Between Ellipses (ft)	Separation Factor	Warning
Offset Well - Wellbore - Design						
Existing Wells - Sec.4-T5N-R66W						
Greeley Tech Center 41-5 (Exist.) - Wellbore #1 - Wellbor						Out of range
Kelly 2-3 (P&A) - Wellbore #1 - Wellbore #1						Out of range
Northridge Pad Sec.4-T5N-R66W						
Northridge 11-4D (Exist.) - Wellbore #1 - Wellbore #1	10,103.6	7,509.4	920.7	788.5	6.962	CC, ES
Northridge 11-4D (Exist.) - Wellbore #1 - Wellbore #1	10,300.0	7,507.1	941.4	803.8	6.838	SF
Northridge 21-4D (Exist.) - Wellbore #1 - Wellbore #1	11,428.9	7,184.9	936.1	788.3	6.331	CC, ES
Northridge 21-4D (Exist.) - Wellbore #1 - Wellbore #1	11,583.6	7,180.4	948.8	796.7	6.237	SF
Northridge 4AD (Exist.) - Wellbore #1 - Wellbore #1	10,861.0	7,199.3	131.0	-7.0	0.949	Level 1, CC, ES, SF
SRC Kelly Farms Pad Sec.4-T5N-R66W						
SRC Kelly Farms 12-4-3CHZ - Wellbore #1 - Wellbore #1	11,584.3	6,914.3	489.1	349.8	3.511	CC, ES, SF
SRC Kelly Farms 22-4-3CHZ - Wellbore #1 - Wellbore #1	11,584.3	6,883.0	725.7	583.2	5.094	CC, ES, SF
SRC Kelly Farms A-4-3CHZ - Wellbore #1 - Wellbore #1	11,584.3	6,886.0	383.2	267.4	3.309	CC, ES, SF
SRC Kelly Farms A-4-3NHZ - Wellbore #1 - Wellbore #1	11,584.3	6,814.5	419.1	370.7	8.659	CC, ES, SF
SRC Wiedeman Pad Sec.5-T5N-R66W						
SRC Wiedeman 11-5-3NCHZ - Wellbore #1 - Plan #3 (9-	1,400.0	1,400.0	30.0	24.0	4.948	CC, ES
SRC Wiedeman 11-5-3NCHZ - Wellbore #1 - Plan #3 (9-	11,584.3	11,527.6	536.2	273.7	2.043	SF
SRC Wiedeman 12-5-4NCHZ - Wellbore #1 - Plan #3 (9-	1,000.0	1,000.0	15.0	10.7	3.513	CC, ES
SRC Wiedeman 12-5-4NCHZ - Wellbore #1 - Plan #3 (9-	11,583.6	11,770.2	279.0	67.3	1.318	Level 3, SF
SRC Wiedeman 21-5-3CHZ - Wellbore #1 - Plan #2 (9-2	500.0	500.0	60.1	58.0	29.688	CC, ES
SRC Wiedeman 21-5-3CHZ - Wellbore #1 - Plan #2 (9-2	800.0	793.0	75.1	71.7	22.287	SF
SRC Wiedeman 21-5-3NBHZ - Wellbore #1 - Plan #3 (9-	1,000.0	1,000.0	45.0	40.8	10.544	CC, ES
SRC Wiedeman 21-5-3NBHZ - Wellbore #1 - Plan #3 (9-	11,584.3	11,691.6	775.0	519.0	3.028	SF
SRC Wiedeman 22-5-4CHZ - Wellbore #1 - Plan #2 (9-0	500.0	500.0	45.0	43.0	22.246	CC, ES
SRC Wiedeman 22-5-4CHZ - Wellbore #1 - Plan #2 (9-0	11,583.6	11,832.8	739.4	483.5	2.889	SF
SRC Wiedeman 22-5-4NBHZ - Wellbore #1 - Plan #3 (9	800.0	800.0	30.0	26.6	8.900	CC, ES
SRC Wiedeman 22-5-4NBHZ - Wellbore #1 - Plan #3 (9	11,583.6	11,632.1	498.1	235.0	1.893	SF
SRC Wiedeman A-5-3NBHZ - Wellbore #1 - Plan #3 (9-2	1,400.0	1,400.0	15.0	9.0	2.477	CC, ES
SRC Wiedeman A-5-3NBHZ - Wellbore #1 - Plan #3 (9-2	11,584.3	11,710.0	358.9	125.0	1.535	SF

Company:	Synergy Resources	Local Co-ordinate Reference:	Well SRC Wiedeman 12-5-4CHZ
Project:	Sec.5-T5N-R66W	TVD Reference:	WELL @ 4796.0ft (RKB - 13')
Reference Site:	SRC Wiedeman Pad Sec.5-T5N-R66W	MD Reference:	WELL @ 4796.0ft (RKB - 13')
Site Error:	0.0ft	North Reference:	True
Reference Well:	SRC Wiedeman 12-5-4CHZ	Survey Calculation Method:	Minimum Curvature
Well Error:	0.0ft	Output errors are at	2.00 sigma
Reference Wellbore	Wellbore #1	Database:	Landmark
Reference Design:	Plan #3 (9-24-14)	Offset TVD Reference:	Offset Datum

Offset Design Northridge Pad Sec.4-T5N-R66W - Northridge 11-4D (Exist.) - Wellbore #1 - Wellbore #1												Offset Site Error:	0.0 ft
Survey Program: 147-MWD												Offset Well Error:	0.0 ft
Reference		Offset		Semi Major Axis			Distance						Warning
Measured Depth (ft)	Vertical Depth (ft)	Measured Depth (ft)	Vertical Depth (ft)	Reference (ft)	Offset (ft)	Highside Toolface (°)	Offset Wellbore Centre +N/-S (ft)	+E/-W (ft)	Between Centres (ft)	Between Ellipses (ft)	Minimum Separation (ft)	Separation Factor	
9,800.0	7,053.0	7,513.2	6,993.8	82.3	49.2	-88.99	740.8	3,139.4	969.5	845.6	123.88	7.826	6.962 CC, ES
9,900.0	7,053.0	7,511.9	6,992.6	85.0	49.2	-88.92	740.8	3,139.4	943.0	816.3	126.64	7.446	
10,000.0	7,053.0	7,510.7	6,991.3	87.8	49.2	-88.84	740.8	3,139.4	926.5	797.1	129.40	7.160	
10,100.0	7,053.0	7,509.5	6,990.1	90.5	49.2	-88.76	740.7	3,139.4	920.7	788.6	132.16	6.967	
10,103.6	7,053.0	7,509.4	6,990.1	90.6	49.2	-88.76	740.7	3,139.4	920.7	788.5	132.25		
10,200.0	7,053.0	7,508.3	6,988.9	93.3	49.2	-88.69	740.7	3,139.4	925.8	790.8	134.92	6.862	
10,300.0	7,053.0	7,507.1	6,987.8	96.1	49.2	-88.62	740.7	3,139.4	941.4	803.8	137.68	6.838 SF	
10,400.0	7,053.0	7,506.0	6,986.6	98.8	49.2	-88.55	740.7	3,139.4	967.3	826.8	140.45	6.887	

Company:	Synergy Resources	Local Co-ordinate Reference:	Well SRC Wiedeman 12-5-4CHZ
Project:	Sec.5-T5N-R66W	TVD Reference:	WELL @ 4796.0ft (RKB - 13')
Reference Site:	SRC Wiedeman Pad Sec.5-T5N-R66W	MD Reference:	WELL @ 4796.0ft (RKB - 13')
Site Error:	0.0ft	North Reference:	True
Reference Well:	SRC Wiedeman 12-5-4CHZ	Survey Calculation Method:	Minimum Curvature
Well Error:	0.0ft	Output errors are at	2.00 sigma
Reference Wellbore	Wellbore #1	Database:	Landmark
Reference Design:	Plan #3 (9-24-14)	Offset TVD Reference:	Offset Datum

Offset Design Northridge Pad Sec.4-T5N-R66W - Northridge 21-4D (Exist.) - Wellbore #1 - Wellbore #1												Offset Site Error:	0.0 ft
Survey Program: 150-MWD												Offset Well Error:	0.0 ft
Reference	Offset	Semi Major Axis		Distance									
Measured Depth (ft)	Vertical Depth (ft)	Measured Depth (ft)	Vertical Depth (ft)	Reference (ft)	Offset (ft)	Highside Toolface (°)	Offset Wellbore Centre +N/-S (ft)	+E/-W (ft)	Between Centres (ft)	Between Ellipses (ft)	Minimum Separation (ft)	Separation Factor	Warning
11,100.0	7,053.0	7,194.5	6,967.6	118.3	31.3	-87.40	775.5	4,464.0	992.2	853.4	138.77	7.150	
11,200.0	7,053.0	7,191.6	6,964.7	121.1	31.3	-87.22	775.3	4,464.1	963.7	822.1	141.53	6.809	
11,300.0	7,053.0	7,188.6	6,961.7	123.8	31.3	-87.04	775.1	4,464.2	945.0	800.7	144.30	6.549	
11,400.0	7,053.0	7,185.7	6,958.8	126.6	31.3	-86.87	775.0	4,464.3	936.6	789.5	147.06	6.369	
11,428.9	7,053.0	7,184.9	6,958.0	127.4	31.3	-86.82	774.9	4,464.3	936.1	788.3	147.86	6.331 CC, ES	
11,500.0	7,053.0	7,182.8	6,956.0	129.4	31.3	-86.69	774.8	4,464.4	938.8	789.0	149.82	6.266	
11,583.6	7,053.0	7,180.4	6,953.6	131.7	31.3	-86.54	774.7	4,464.5	948.8	796.7	152.13	6.237 SF	
11,584.3	7,053.0	7,180.4	6,953.5	131.7	31.3	-86.54	774.7	4,464.5	948.9	796.8	152.14	6.237	

Company:	Synergy Resources	Local Co-ordinate Reference:	Well SRC Wiedeman 12-5-4CHZ
Project:	Sec.5-T5N-R66W	TVD Reference:	WELL @ 4796.0ft (RKB - 13')
Reference Site:	SRC Wiedeman Pad Sec.5-T5N-R66W	MD Reference:	WELL @ 4796.0ft (RKB - 13')
Site Error:	0.0ft	North Reference:	True
Reference Well:	SRC Wiedeman 12-5-4CHZ	Survey Calculation Method:	Minimum Curvature
Well Error:	0.0ft	Output errors are at	2.00 sigma
Reference Wellbore	Wellbore #1	Database:	Landmark
Reference Design:	Plan #3 (9-24-14)	Offset TVD Reference:	Offset Datum

Offset Design Northridge Pad Sec.4-T5N-R66W - Northridge 4AD (Exist.) - Wellbore #1 - Wellbore #1												Offset Site Error:	0.0 ft
Survey Program: 182-MWD												Offset Well Error:	0.0 ft
Reference		Offset		Semi Major Axis			Distance						
Measured Depth (ft)	Vertical Depth (ft)	Measured Depth (ft)	Vertical Depth (ft)	Reference (ft)	Offset (ft)	Highside Toolface (°)	Offset Wellbore Centre +N/-S (ft)	+E/-W (ft)	Between Centres (ft)	Between Ellipses (ft)	Minimum Separation (ft)	Separation Factor	Warning
9,900.0	7,053.0	7,226.2	7,036.4	85.0	28.7	-101.40	-37.2	3,907.9	969.5	860.2	109.31	8.869	
10,000.0	7,053.0	7,223.8	7,034.1	87.8	28.7	-100.40	-37.2	3,907.9	870.5	758.2	112.37	7.747	
10,100.0	7,053.0	7,221.3	7,031.6	90.5	28.7	-99.35	-37.2	3,908.0	771.9	656.4	115.43	6.687	
10,200.0	7,053.0	7,218.8	7,029.0	93.3	28.7	-98.27	-37.2	3,908.1	673.6	555.1	118.49	5.684	
10,300.0	7,053.0	7,216.1	7,026.4	96.1	28.7	-97.13	-37.2	3,908.2	575.8	454.3	121.54	4.738	
10,400.0	7,053.0	7,213.4	7,023.7	98.8	28.7	-95.95	-37.2	3,908.2	479.0	354.5	124.57	3.846	
10,500.0	7,053.0	7,210.5	7,020.8	101.6	28.7	-94.72	-37.2	3,908.3	383.9	256.3	127.57	3.009	
10,600.0	7,053.0	7,207.6	7,017.9	104.4	28.7	-93.44	-37.2	3,908.4	291.9	161.4	130.54	2.236	
10,700.0	7,053.0	7,204.5	7,014.8	107.2	28.7	-92.10	-37.2	3,908.5	207.5	74.1	133.46	1.555	
10,800.0	7,053.0	7,201.3	7,011.6	109.9	28.7	-90.71	-37.2	3,908.6	144.5	8.2	136.32	1.060 Level 2	
10,861.0	7,053.0	7,199.3	7,009.6	111.6	28.7	-89.83	-37.2	3,908.7	131.0	-7.0	138.03	0.949 Level 1, CC, ES, SF	
10,900.0	7,053.0	7,198.0	7,008.3	112.7	28.7	-89.26	-37.3	3,908.7	136.7	-2.4	139.11	0.982 Level 1	
11,000.0	7,053.0	7,194.6	7,004.9	115.5	28.7	-87.75	-37.3	3,908.9	190.9	49.1	141.82	1.346 Level 3	
11,100.0	7,053.0	7,191.0	7,001.3	118.3	28.6	-86.18	-37.3	3,909.0	272.4	128.0	144.42	1.886	
11,200.0	7,053.0	7,187.2	6,997.5	121.1	28.6	-84.55	-37.3	3,909.1	363.2	216.3	146.90	2.473	
11,300.0	7,053.0	7,183.3	6,993.6	123.8	28.6	-82.86	-37.3	3,909.3	457.8	308.6	149.24	3.068	
11,400.0	7,053.0	7,179.2	6,989.5	126.6	28.6	-81.10	-37.3	3,909.4	554.3	402.9	151.42	3.661	
11,500.0	7,053.0	7,174.9	6,985.2	129.4	28.6	-79.28	-37.3	3,909.6	651.9	498.5	153.41	4.249	
11,583.6	7,053.0	7,171.2	6,981.5	131.7	28.6	-77.71	-37.3	3,909.7	733.9	579.0	154.92	4.737	
11,584.3	7,053.0	7,171.1	6,981.4	131.7	28.6	-77.70	-37.3	3,909.7	734.5	579.6	154.93	4.741	

Company:	Synergy Resources	Local Co-ordinate Reference:	Well SRC Wiedeman 12-5-4CHZ
Project:	Sec.5-T5N-R66W	TVD Reference:	WELL @ 4796.0ft (RKB - 13')
Reference Site:	SRC Wiedeman Pad Sec.5-T5N-R66W	MD Reference:	WELL @ 4796.0ft (RKB - 13')
Site Error:	0.0ft	North Reference:	True
Reference Well:	SRC Wiedeman 12-5-4CHZ	Survey Calculation Method:	Minimum Curvature
Well Error:	0.0ft	Output errors are at	2.00 sigma
Reference Wellbore	Wellbore #1	Database:	Landmark
Reference Design:	Plan #3 (9-24-14)	Offset TVD Reference:	Offset Datum

Offset Design												Offset Site Error:	0.0 ft
SRC Kelly Farms Pad Sec.4-T5N-R66W - SRC Kelly Farms 12-4-3CHZ - Wellbore #1 - Wellbore #1												Offset Well Error:	0.0 ft
Survey Program: 169-MWD													
Reference		Offset		Semi Major Axis			Distance						
Measured Depth (ft)	Vertical Depth (ft)	Measured Depth (ft)	Vertical Depth (ft)	Reference (ft)	Offset (ft)	Highside Toolface (°)	Offset Wellbore Centre +N/-S (ft)	+E/-W (ft)	Between Centres (ft)	Between Ellipses (ft)	Minimum Separation (ft)	Separation Factor	Warning
10,900.0	7,053.0	6,739.6	6,726.9	112.7	14.0	54.44	-566.9	4,797.9	982.7	877.2	105.53	9.312	
11,000.0	7,053.0	6,761.7	6,747.6	115.5	14.0	56.37	-566.4	4,805.5	898.1	788.0	110.07	8.159	
11,100.0	7,053.0	6,788.0	6,772.2	118.3	14.1	58.78	-565.9	4,814.9	816.0	700.8	115.13	7.087	
11,200.0	7,053.0	6,788.0	6,772.2	121.1	14.1	58.78	-565.9	4,814.9	737.5	620.0	117.53	6.275	
11,300.0	7,053.0	6,828.9	6,809.7	123.8	14.2	62.71	-564.9	4,831.0	662.8	538.6	124.18	5.337	
11,400.0	7,053.0	6,855.8	6,833.9	126.6	14.3	65.41	-564.0	4,842.9	594.2	464.9	129.34	4.594	
11,500.0	7,053.0	6,877.0	6,852.5	129.4	14.3	67.57	-563.2	4,853.0	533.2	399.4	133.89	3.983	
11,583.6	7,053.0	6,914.1	6,884.3	131.7	14.5	71.41	-561.8	4,872.1	489.4	350.1	139.29	3.514	
11,584.3	7,053.0	6,914.3	6,884.5	131.7	14.5	71.44	-561.8	4,872.2	489.1	349.8	139.31	3.511	CC, ES, SF

Company:	Synergy Resources	Local Co-ordinate Reference:	Well SRC Wiedeman 12-5-4CHZ
Project:	Sec.5-T5N-R66W	TVD Reference:	WELL @ 4796.0ft (RKB - 13')
Reference Site:	SRC Wiedeman Pad Sec.5-T5N-R66W	MD Reference:	WELL @ 4796.0ft (RKB - 13')
Site Error:	0.0ft	North Reference:	True
Reference Well:	SRC Wiedeman 12-5-4CHZ	Survey Calculation Method:	Minimum Curvature
Well Error:	0.0ft	Output errors are at	2.00 sigma
Reference Wellbore	Wellbore #1	Database:	Landmark
Reference Design:	Plan #3 (9-24-14)	Offset TVD Reference:	Offset Datum

Offset Design												Offset Site Error:	0.0 ft
SRC Kelly Farms Pad Sec.4-T5N-R66W - SRC Kelly Farms 22-4-3CHZ - Wellbore #1 - Wellbore #1												Offset Well Error:	0.0 ft
Survey Program: 80-MWD													
Reference		Offset		Semi Major Axis			Distance						
Measured Depth (ft)	Vertical Depth (ft)	Measured Depth (ft)	Vertical Depth (ft)	Reference (ft)	Offset (ft)	Highside Toolface (°)	Offset Wellbore Centre +N/-S (ft)	+E/-W (ft)	Between Centres (ft)	Between Ellipses (ft)	Minimum Separation (ft)	Separation Factor	Warning
11,100.0	7,053.0	6,795.0	6,779.0	118.3	14.6	69.46	-809.1	4,870.4	997.6	872.4	125.20	7.968	
11,200.0	7,053.0	6,795.0	6,779.0	121.1	14.6	69.46	-809.1	4,870.4	929.0	801.2	127.81	7.268	
11,300.0	7,053.0	6,819.1	6,801.2	123.8	14.7	71.18	-808.7	4,879.7	865.8	734.0	131.75	6.571	
11,400.0	7,053.0	6,840.5	6,820.6	126.6	14.8	72.71	-808.4	4,888.7	809.1	673.6	135.52	5.971	
11,500.0	7,053.0	6,883.0	6,858.4	129.4	14.9	75.77	-808.2	4,908.3	760.5	620.3	140.19	5.424	
11,583.6	7,053.0	6,883.0	6,858.4	131.7	14.9	75.77	-808.2	4,908.3	725.9	583.5	142.45	5.096	
11,584.3	7,053.0	6,883.0	6,858.4	131.7	14.9	75.77	-808.2	4,908.3	725.7	583.2	142.47	5.094 CC, ES, SF	

Company:	Synergy Resources	Local Co-ordinate Reference:	Well SRC Wiedeman 12-5-4CHZ
Project:	Sec.5-T5N-R66W	TVD Reference:	WELL @ 4796.0ft (RKB - 13')
Reference Site:	SRC Wiedeman Pad Sec.5-T5N-R66W	MD Reference:	WELL @ 4796.0ft (RKB - 13')
Site Error:	0.0ft	North Reference:	True
Reference Well:	SRC Wiedeman 12-5-4CHZ	Survey Calculation Method:	Minimum Curvature
Well Error:	0.0ft	Output errors are at	2.00 sigma
Reference Wellbore	Wellbore #1	Database:	Landmark
Reference Design:	Plan #3 (9-24-14)	Offset TVD Reference:	Offset Datum

Offset Design												Offset Site Error:	0.0 ft
SRC Kelly Farms Pad Sec.4-T5N-R66W - SRC Kelly Farms A-4-3CHZ - Wellbore #1 - Wellbore #1												Offset Well Error:	0.0 ft
Survey Program: 79-MWD													
Reference		Offset		Semi Major Axis			Distance						
Measured Depth (ft)	Vertical Depth (ft)	Measured Depth (ft)	Vertical Depth (ft)	Reference (ft)	Offset (ft)	Highside Toolface (°)	Offset Wellbore Centre +N/-S (ft)	+E/-W (ft)	Between Centres (ft)	Between Ellipses (ft)	Minimum Separation (ft)	Separation Factor	Warning
10,900.0	7,053.0	6,767.8	6,742.7	112.7	14.9	35.17	-350.9	4,870.5	979.8	900.3	79.48	12.327	
11,000.0	7,053.0	6,797.0	6,770.5	115.5	15.0	38.30	-352.6	4,879.1	886.7	800.7	86.02	10.308	
11,100.0	7,053.0	6,797.0	6,770.5	118.3	15.0	38.30	-352.6	4,879.1	794.4	706.5	87.83	9.044	
11,200.0	7,053.0	6,797.0	6,770.5	121.1	15.0	38.30	-352.6	4,879.1	704.0	614.4	89.64	7.854	
11,300.0	7,053.0	6,829.6	6,801.2	123.8	15.0	42.25	-354.5	4,890.0	615.0	517.3	97.77	6.291	
11,400.0	7,053.0	6,849.4	6,819.5	126.6	15.1	44.89	-355.6	4,897.5	529.2	425.4	103.85	5.096	
11,500.0	7,053.0	6,886.0	6,852.6	129.4	15.2	50.26	-357.5	4,912.9	447.7	333.7	113.96	3.929	
11,583.6	7,053.0	6,886.0	6,852.6	131.7	15.2	50.26	-357.5	4,912.9	383.6	267.8	115.79	3.313	
11,584.3	7,053.0	6,886.0	6,852.6	131.7	15.2	50.26	-357.5	4,912.9	383.2	267.4	115.80	3.309	CC, ES, SF

Company:	Synergy Resources	Local Co-ordinate Reference:	Well SRC Wiedeman 12-5-4CHZ
Project:	Sec.5-T5N-R66W	TVD Reference:	WELL @ 4796.0ft (RKB - 13')
Reference Site:	SRC Wiedeman Pad Sec.5-T5N-R66W	MD Reference:	WELL @ 4796.0ft (RKB - 13')
Site Error:	0.0ft	North Reference:	True
Reference Well:	SRC Wiedeman 12-5-4CHZ	Survey Calculation Method:	Minimum Curvature
Well Error:	0.0ft	Output errors are at	2.00 sigma
Reference Wellbore	Wellbore #1	Database:	Landmark
Reference Design:	Plan #3 (9-24-14)	Offset TVD Reference:	Offset Datum

Offset Design												Offset Site Error:	0.0 ft
SRC Kelly Farms Pad Sec.4-T5N-R66W - SRC Kelly Farms A-4-3NHZ - Wellbore #1 - Wellbore #1												Offset Well Error:	0.0 ft
Survey Program: 174-MWD													
Reference		Offset		Semi Major Axis			Distance						
Measured Depth (ft)	Vertical Depth (ft)	Measured Depth (ft)	Vertical Depth (ft)	Reference (ft)	Offset (ft)	Highside Toolface (°)	Offset Wellbore Centre +N/-S (ft)	+E/-W (ft)	Between Centres (ft)	Between Ellipses (ft)	Minimum Separation (ft)	Separation Factor	Warning
10,900.0	7,053.0	6,615.0	6,573.5	112.7	16.3	-4.70	-117.5	4,821.4	982.3	943.5	38.84	25.290	
11,000.0	7,053.0	6,650.4	6,605.3	115.5	16.4	-5.40	-114.7	4,836.6	892.6	852.5	40.08	22.273	
11,100.0	7,053.0	6,667.2	6,620.0	118.3	16.5	-5.73	-113.6	4,844.7	805.3	764.2	41.09	19.596	
11,200.0	7,053.0	6,704.0	6,651.1	121.1	16.6	-6.47	-111.6	4,864.3	720.5	678.0	42.48	16.961	
11,300.0	7,053.0	6,704.0	6,651.1	123.8	16.6	-6.47	-111.6	4,864.3	637.2	594.0	43.26	14.731	
11,400.0	7,053.0	6,740.2	6,680.3	126.6	16.7	-7.24	-109.9	4,885.7	557.2	512.5	44.78	12.445	
11,500.0	7,053.0	6,794.0	6,721.1	129.4	17.0	-8.56	-107.4	4,920.5	481.3	434.3	47.01	10.238	
11,583.6	7,053.0	6,814.1	6,735.8	131.7	17.0	-9.12	-106.5	4,934.3	419.5	371.1	48.38	8.672	
11,584.3	7,053.0	6,814.5	6,736.1	131.7	17.0	-9.13	-106.5	4,934.5	419.1	370.7	48.40	8.659 CC, ES, SF	

Company:	Synergy Resources	Local Co-ordinate Reference:	Well SRC Wiedeman 12-5-4CHZ
Project:	Sec.5-T5N-R66W	TVD Reference:	WELL @ 4796.0ft (RKB - 13')
Reference Site:	SRC Wiedeman Pad Sec.5-T5N-R66W	MD Reference:	WELL @ 4796.0ft (RKB - 13')
Site Error:	0.0ft	North Reference:	True
Reference Well:	SRC Wiedeman 12-5-4CHZ	Survey Calculation Method:	Minimum Curvature
Well Error:	0.0ft	Output errors are at	2.00 sigma
Reference Wellbore	Wellbore #1	Database:	Landmark
Reference Design:	Plan #3 (9-24-14)	Offset TVD Reference:	Offset Datum

Offset Design													Offset Site Error:	0.0 ft
Survey Program: 0-MWD													Offset Well Error:	0.0 ft
Reference		Offset		Semi Major Axis			Distance							Warning
Measured Depth (ft)	Vertical Depth (ft)	Measured Depth (ft)	Vertical Depth (ft)	Reference (ft)	Offset (ft)	Highside Toolface (°)	Offset Wellbore Centre +N/-S (ft)	+E/-W (ft)	Between Centres (ft)	Between Ellipses (ft)	Minimum Separation (ft)	Separation Factor		
0.0	0.0	0.0	0.0	0.0	0.0	5.85	29.9	3.1	30.0					
100.0	100.0	100.0	100.0	0.1	0.1	5.85	29.9	3.1	30.0	29.8	0.22	133.607		
200.0	200.0	200.0	200.0	0.3	0.3	5.85	29.9	3.1	30.0	29.4	0.67	44.536		
300.0	300.0	300.0	300.0	0.6	0.6	5.85	29.9	3.1	30.0	28.9	1.12	26.721		
400.0	400.0	400.0	400.0	0.8	0.8	5.85	29.9	3.1	30.0	28.5	1.57	19.087		
500.0	500.0	500.0	500.0	1.0	1.0	5.85	29.9	3.1	30.0	28.0	2.02	14.845		
600.0	600.0	600.0	600.0	1.2	1.2	5.85	29.9	3.1	30.0	27.6	2.47	12.146		
700.0	700.0	700.0	700.0	1.5	1.5	5.85	29.9	3.1	30.0	27.1	2.92	10.277		
800.0	800.0	800.0	800.0	1.7	1.7	5.85	29.9	3.1	30.0	26.7	3.37	8.907		
900.0	900.0	900.0	900.0	1.9	1.9	5.85	29.9	3.1	30.0	26.2	3.82	7.859		
1,000.0	1,000.0	1,000.0	1,000.0	2.1	2.1	5.85	29.9	3.1	30.0	25.8	4.27	7.032		
1,100.0	1,100.0	1,100.0	1,100.0	2.4	2.4	5.85	29.9	3.1	30.0	25.3	4.72	6.362		
1,200.0	1,200.0	1,200.0	1,200.0	2.6	2.6	5.85	29.9	3.1	30.0	24.9	5.17	5.809		
1,300.0	1,300.0	1,300.0	1,300.0	2.8	2.8	5.85	29.9	3.1	30.0	24.4	5.62	5.344		
1,400.0	1,400.0	1,400.0	1,400.0	3.0	3.0	5.85	29.9	3.1	30.0	24.0	6.07	4.948 CC, ES		
1,500.0	1,500.0	1,500.0	1,500.0	3.2	3.3	148.28	29.9	3.1	31.5	25.0	6.49	4.853		
1,600.0	1,599.8	1,598.8	1,598.8	3.4	3.5	151.05	31.4	2.4	37.5	30.6	6.89	5.441		
1,700.0	1,699.5	1,696.8	1,696.7	3.6	3.7	152.50	36.1	0.4	49.4	42.1	7.29	6.779		
1,716.3	1,715.7	1,712.8	1,712.6	3.6	3.7	152.63	37.1	-0.1	51.9	44.6	7.35	7.060		
1,800.0	1,798.8	1,793.8	1,793.3	3.8	3.9	152.59	43.7	-2.9	66.1	58.4	7.70	8.579		
1,900.0	1,898.2	1,890.7	1,889.5	4.0	4.2	151.46	54.1	-7.3	85.3	77.2	8.13	10.494		
2,000.0	1,997.6	1,988.7	1,986.8	4.3	4.4	150.54	65.2	-12.1	105.2	96.6	8.57	12.275		
2,100.0	2,097.0	2,086.7	2,084.0	4.5	4.6	149.90	76.4	-16.9	125.0	116.0	9.01	13.873		
2,200.0	2,196.4	2,184.7	2,181.3	4.8	4.9	149.44	87.5	-21.7	144.9	135.4	9.46	15.311		
2,300.0	2,295.8	2,282.7	2,278.5	5.0	5.2	149.09	98.6	-26.4	164.8	154.8	9.92	16.608		
2,400.0	2,395.2	2,380.7	2,375.8	5.3	5.4	148.82	109.7	-31.2	184.6	174.3	10.38	17.782		
2,500.0	2,494.6	2,478.7	2,473.0	5.6	5.7	148.60	120.9	-36.0	204.5	193.7	10.85	18.848		
2,600.0	2,594.0	2,576.7	2,570.3	5.8	6.0	148.42	132.0	-40.8	224.4	213.1	11.32	19.818		
2,700.0	2,693.4	2,674.7	2,667.5	6.1	6.3	148.27	143.1	-45.6	244.3	232.5	11.80	20.705		
2,800.0	2,792.8	2,772.7	2,764.8	6.4	6.6	148.14	154.2	-50.3	264.2	251.9	12.28	21.517		
2,900.0	2,892.1	2,870.7	2,862.0	6.7	6.8	148.03	165.4	-55.1	284.0	271.3	12.76	22.264		
3,000.0	2,991.5	2,968.7	2,959.3	6.9	7.1	147.93	176.5	-59.9	303.9	290.7	13.24	22.952		
3,100.0	3,090.9	3,066.7	3,056.5	7.2	7.4	147.85	187.6	-64.7	323.8	310.1	13.73	23.587		
3,200.0	3,190.3	3,164.7	3,153.8	7.5	7.7	147.77	198.7	-69.4	343.7	329.5	14.22	24.176		
3,300.0	3,289.7	3,262.7	3,251.0	7.8	8.0	147.71	209.9	-74.2	363.6	348.9	14.71	24.722		
3,400.0	3,389.1	3,360.7	3,348.3	8.1	8.3	147.65	221.0	-79.0	383.5	368.3	15.20	25.230		
3,500.0	3,488.5	3,458.7	3,445.5	8.4	8.6	147.59	232.1	-83.8	403.4	387.7	15.69	25.704		
3,600.0	3,587.9	3,556.7	3,542.8	8.7	8.9	147.54	243.2	-88.5	423.3	407.1	16.19	26.147		
3,700.0	3,687.3	3,654.7	3,640.0	9.0	9.2	147.50	254.4	-93.3	443.1	426.5	16.68	26.561		
3,800.0	3,786.7	3,752.7	3,737.3	9.3	9.5	147.46	265.5	-98.1	463.0	445.8	17.18	26.950		
3,900.0	3,886.1	3,850.7	3,834.5	9.6	9.8	147.42	276.6	-102.9	482.9	465.2	17.68	27.315		
4,000.0	3,985.4	3,948.7	3,931.8	9.9	10.1	147.39	287.8	-107.6	502.8	484.6	18.18	27.658		
4,099.5	4,084.3	4,046.2	4,028.5	10.2	10.4	147.36	298.8	-112.4	522.6	503.9	18.68	27.980		
4,200.0	4,184.4	4,145.0	4,126.6	10.4	10.7	147.43	310.0	-117.2	541.1	521.9	19.20	28.187		
4,300.0	4,284.2	4,243.8	4,224.5	10.6	11.0	147.28	321.2	-122.0	556.7	537.0	19.68	28.288		
4,400.0	4,384.2	4,359.0	4,339.1	10.8	11.3	146.90	332.9	-127.0	568.2	548.1	20.12	28.237		
4,415.8	4,400.0	4,378.0	4,358.1	10.9	11.3	6.14	334.5	-127.7	569.5	548.1	21.41	26.602		
4,500.0	4,484.2	4,479.8	4,459.6	11.0	11.5	5.81	340.7	-130.4	574.4	552.6	21.76	26.392		
4,600.0	4,584.2	4,601.1	4,580.8	11.2	11.8	5.65	343.8	-131.7	576.8	554.7	22.16	26.036		
4,700.0	4,684.2	4,704.5	4,684.2	11.4	11.9	5.64	343.9	-131.7	576.9	554.4	22.51	25.622		
4,800.0	4,784.2	4,804.5	4,784.2	11.5	12.1	5.64	343.9	-131.7	576.9	554.0	22.89	25.202		
4,900.0	4,884.2	4,904.5	4,884.2	11.7	12.3	5.64	343.9	-131.7	576.9	553.6	23.27	24.791		

CC - Min centre to center distance or convergent point, SF - min separation factor, ES - min ellipse separation

SRC Wiedeman Pad Sec.5-T5N-R66W - SRC Wiedeman 11-5-3NCHZ - Wellbore #1 - Plan #3 (9-24-14)													Offset Site Error:	0.0 ft
Survey Program: 0-MWD													Offset Well Error:	0.0 ft
Reference		Offset		Semi Major Axis			Distance							
Measured Depth (ft)	Vertical Depth (ft)	Measured Depth (ft)	Vertical Depth (ft)	Reference (ft)	Offset (ft)	Highside Toolface (°)	Offset Wellbore Centre +N/-S (ft)	+E/-W (ft)	Between Centres (ft)	Between Ellipses (ft)	Minimum Separation (ft)	Separation Factor	Warning	
5,000.0	4,984.2	5,004.5	4,984.2	11.9	12.5	5.64	343.9	-131.7	576.9	553.2	23.65	24.392		
5,100.0	5,084.2	5,104.5	5,084.2	12.1	12.7	5.64	343.9	-131.7	576.9	552.8	24.03	24.003		
5,200.0	5,184.2	5,204.5	5,184.2	12.3	12.9	5.64	343.9	-131.7	576.9	552.5	24.42	23.623		
5,300.0	5,284.2	5,304.5	5,284.2	12.4	13.1	5.64	343.9	-131.7	576.9	552.1	24.81	23.254		
5,400.0	5,384.2	5,404.5	5,384.2	12.6	13.3	5.64	343.9	-131.7	576.9	551.7	25.20	22.894		
5,500.0	5,484.2	5,504.5	5,484.2	12.8	13.5	5.64	343.9	-131.7	576.9	551.3	25.59	22.543		
5,600.0	5,584.2	5,604.5	5,584.2	13.0	13.7	5.64	343.9	-131.7	576.9	550.9	25.98	22.202		
5,700.0	5,684.2	5,704.5	5,684.2	13.2	13.9	5.64	343.9	-131.7	576.9	550.5	26.38	21.869		
5,800.0	5,784.2	5,804.5	5,784.2	13.4	14.1	5.64	343.9	-131.7	576.9	550.1	26.78	21.544		
5,900.0	5,884.2	5,904.5	5,884.2	13.6	14.3	5.64	343.9	-131.7	576.9	549.7	27.17	21.228		
6,000.0	5,984.2	6,004.5	5,984.2	13.8	14.5	5.64	343.9	-131.7	576.9	549.3	27.58	20.920		
6,100.0	6,084.2	6,104.5	6,084.2	14.0	14.7	5.64	343.9	-131.7	576.9	548.9	27.98	20.619		
6,200.0	6,184.2	6,204.5	6,184.2	14.2	14.9	5.64	343.9	-131.7	576.9	548.5	28.38	20.326		
6,300.0	6,284.2	6,304.5	6,284.2	14.3	15.1	5.64	343.9	-131.7	576.9	548.1	28.79	20.040		
6,352.6	6,336.8	6,357.1	6,336.8	14.4	15.2	5.64	343.9	-131.7	576.9	547.9	29.00	19.893		
6,400.0	6,384.2	6,400.0	6,379.7	14.5	15.3	-83.50	343.9	-130.5	576.8	548.5	28.35	20.349		
6,401.7	6,385.9	6,402.4	6,382.1	14.5	15.3	-83.50	343.9	-130.3	576.8	548.5	28.35	20.344		
6,450.0	6,433.9	6,446.9	6,426.3	14.6	15.3	-83.54	343.9	-126.1	576.8	548.3	28.50	20.235		
6,500.0	6,483.2	6,493.0	6,471.9	14.7	15.4	-83.62	344.0	-118.9	576.6	548.0	28.64	20.133		
6,550.0	6,531.7	6,539.1	6,516.9	14.7	15.5	-83.71	344.0	-108.7	576.4	547.7	28.77	20.039		
6,600.0	6,579.3	6,585.4	6,561.2	14.8	15.5	-83.84	344.1	-95.7	576.2	547.3	28.89	19.948		
6,650.0	6,625.7	6,631.7	6,604.7	14.8	15.6	-84.00	344.3	-79.7	575.9	546.9	29.01	19.855		
6,700.0	6,670.7	6,678.1	6,647.1	14.8	15.6	-84.18	344.4	-61.0	575.6	546.4	29.14	19.753		
6,750.0	6,714.1	6,724.5	6,688.4	14.9	15.7	-84.39	344.6	-39.5	575.2	545.9	29.30	19.634		
6,800.0	6,755.7	6,771.2	6,728.2	14.9	15.7	-84.63	344.7	-15.3	574.8	545.3	29.50	19.487		
6,850.0	6,795.2	6,817.9	6,766.5	15.0	15.8	-84.89	344.9	11.5	574.3	544.6	29.75	19.303		
6,900.0	6,832.4	6,864.8	6,803.0	15.0	15.8	-85.17	345.1	40.8	573.9	543.8	30.09	19.072		
6,950.0	6,867.3	6,911.8	6,837.7	15.1	15.9	-85.48	345.4	72.6	573.4	542.9	30.52	18.784		
7,000.0	6,899.6	6,959.0	6,870.3	15.3	16.0	-85.81	345.6	106.7	572.9	541.8	31.07	18.436		
7,050.0	6,929.1	7,006.4	6,900.8	15.7	16.3	-86.15	345.9	143.0	572.3	540.6	31.76	18.023		
7,100.0	6,955.7	7,054.0	6,928.8	16.2	16.6	-86.52	346.2	181.4	571.8	539.2	32.59	17.548		
7,150.0	6,979.4	7,101.9	6,954.4	16.7	17.1	-86.91	346.5	221.8	571.3	537.7	33.57	17.016		
7,200.0	6,999.9	7,150.0	6,977.4	17.3	17.6	-87.31	346.8	264.1	570.7	536.0	34.72	16.438		
7,250.0	7,017.1	7,198.2	6,997.5	18.0	18.2	-87.72	347.1	307.9	570.2	534.2	36.03	15.826		
7,300.0	7,031.1	7,246.7	7,014.7	18.8	18.9	-88.15	347.4	353.3	569.7	532.2	37.49	15.195		
7,350.0	7,041.7	7,295.5	7,028.8	19.7	19.6	-88.59	347.8	400.0	569.2	530.1	39.10	14.558		
7,400.0	7,048.8	7,344.6	7,039.8	20.6	20.5	-89.04	348.1	447.8	568.8	527.9	40.83	13.929		
7,450.0	7,052.5	7,393.9	7,047.6	21.5	21.3	-89.49	348.5	496.5	568.3	525.6	42.68	13.317		
7,477.6	7,053.0	7,421.2	7,050.4	22.1	21.9	-89.74	348.7	523.7	568.1	524.4	43.73	12.990		
7,500.0	7,053.0	7,443.5	7,052.0	22.5	22.3	-89.90	348.9	545.9	567.9	523.3	44.61	12.731		
7,600.0	7,053.0	7,543.5	7,053.0	24.6	24.3	-90.00	349.6	645.9	567.1	518.4	48.74	11.637		
7,700.0	7,053.0	7,643.5	7,053.0	26.9	26.4	-90.00	350.3	745.8	566.4	513.2	53.12	10.662		
7,800.0	7,053.0	7,743.5	7,053.0	29.2	28.7	-90.00	351.1	845.8	565.6	507.9	57.71	9.800		
7,900.0	7,053.0	7,843.5	7,053.0	31.6	31.0	-90.00	351.8	945.8	564.8	502.3	62.48	9.040		
8,000.0	7,053.0	7,943.5	7,053.0	34.1	33.5	-90.00	352.5	1,045.8	564.0	496.7	67.37	8.372		
8,100.0	7,053.0	8,043.5	7,053.0	36.6	35.9	-90.00	353.3	1,145.8	563.2	490.9	72.37	7.783		
8,200.0	7,053.0	8,143.5	7,053.0	39.1	38.5	-90.00	354.0	1,245.8	562.5	485.0	77.45	7.262		
8,300.0	7,053.0	8,243.5	7,053.0	41.7	41.0	-90.00	354.7	1,345.8	561.7	479.1	82.60	6.800		
8,400.0	7,053.0	8,343.5	7,053.0	44.3	43.6	-90.00	355.5	1,445.8	560.9	473.1	87.81	6.388		
8,500.0	7,053.0	8,443.5	7,053.0	47.0	46.2	-90.00	356.2	1,545.8	560.1	467.1	93.07	6.019		
8,600.0	7,053.0	8,543.5	7,053.0	49.6	48.8	-90.00	356.9	1,645.8	559.4	461.0	98.36	5.687		
8,700.0	7,053.0	8,643.5	7,053.0	52.3	51.5	-90.00	357.7	1,745.8	558.6	454.9	103.69	5.387		

Company:	Synergy Resources	Local Co-ordinate Reference:	Well SRC Wiedeman 12-5-4CHZ
Project:	Sec.5-T5N-R66W	TVD Reference:	WELL @ 4796.0ft (RKB - 13')
Reference Site:	SRC Wiedeman Pad Sec.5-T5N-R66W	MD Reference:	WELL @ 4796.0ft (RKB - 13')
Site Error:	0.0ft	North Reference:	True
Reference Well:	SRC Wiedeman 12-5-4CHZ	Survey Calculation Method:	Minimum Curvature
Well Error:	0.0ft	Output errors are at	2.00 sigma
Reference Wellbore	Wellbore #1	Database:	Landmark
Reference Design:	Plan #3 (9-24-14)	Offset TVD Reference:	Offset Datum

Offset Design												Offset Site Error:	0.0 ft
Survey Program: 0-MWD												Offset Well Error:	0.0 ft
Reference		Offset		Semi Major Axis			Distance						Warning
Measured Depth (ft)	Vertical Depth (ft)	Measured Depth (ft)	Vertical Depth (ft)	Reference (ft)	Offset (ft)	Highside Toolface (°)	Offset Wellbore Centre +N/-S (ft)	+E/-W (ft)	Between Centres (ft)	Between Ellipses (ft)	Minimum Separation (ft)	Separation Factor	
8,800.0	7,053.0	8,743.5	7,053.0	55.0	54.2	-90.00	358.4	1,845.8	557.8	448.8	109.05	5.115	
8,900.0	7,053.0	8,843.5	7,053.0	57.7	56.8	-90.00	359.1	1,945.8	557.0	442.6	114.43	4.868	
9,000.0	7,053.0	8,943.5	7,053.0	60.4	59.5	-90.00	359.9	2,045.8	556.3	436.4	119.83	4.642	
9,100.0	7,053.0	9,043.5	7,053.0	63.1	62.2	-90.00	360.6	2,145.8	555.5	430.2	125.25	4.435	
9,200.0	7,053.0	9,143.4	7,053.0	65.8	64.9	-90.00	361.3	2,245.8	554.7	424.0	130.69	4.244	
9,300.0	7,053.0	9,243.4	7,053.0	68.5	67.7	-90.00	362.1	2,345.8	553.9	417.8	136.14	4.069	
9,400.0	7,053.0	9,343.4	7,053.0	71.3	70.4	-90.00	362.8	2,445.7	553.1	411.5	141.60	3.906	
9,500.0	7,053.0	9,443.4	7,053.0	74.0	73.1	-90.00	363.6	2,545.7	552.4	405.3	147.08	3.756	
9,600.0	7,053.0	9,543.4	7,053.0	76.8	75.9	-90.00	364.3	2,645.7	551.6	399.0	152.56	3.616	
9,700.0	7,053.0	9,643.4	7,053.0	79.5	78.6	-90.00	365.0	2,745.7	550.8	392.8	158.06	3.485	
9,800.0	7,053.0	9,743.4	7,053.0	82.3	81.4	-90.00	365.8	2,845.7	550.0	386.5	163.56	3.363	
9,900.0	7,053.0	9,843.4	7,053.0	85.0	84.1	-90.00	366.5	2,945.7	549.3	380.2	169.07	3.249	
10,000.0	7,053.0	9,943.4	7,053.0	87.8	86.9	-90.00	367.2	3,045.7	548.5	373.9	174.58	3.142	
10,100.0	7,053.0	10,043.4	7,053.0	90.5	89.6	-90.00	368.0	3,145.7	547.7	367.6	180.11	3.041	
10,200.0	7,053.0	10,143.4	7,053.0	93.3	92.4	-90.00	368.7	3,245.7	546.9	361.3	185.63	2.946	
10,300.0	7,053.0	10,243.4	7,053.0	96.1	95.1	-90.00	369.4	3,345.7	546.2	355.0	191.17	2.857	
10,400.0	7,053.0	10,343.4	7,053.0	98.8	97.9	-90.00	370.2	3,445.7	545.4	348.7	196.70	2.773	
10,500.0	7,053.0	10,443.4	7,053.0	101.6	100.7	-90.00	370.9	3,545.7	544.6	342.4	202.24	2.693	
10,600.0	7,053.0	10,543.4	7,053.0	104.4	103.4	-90.00	371.6	3,645.7	543.8	336.0	207.79	2.617	
10,700.0	7,053.0	10,643.4	7,053.0	107.2	106.2	-90.00	372.4	3,745.7	543.1	329.7	213.34	2.546	
10,800.0	7,053.0	10,743.4	7,053.0	109.9	109.0	-90.00	373.1	3,845.7	542.3	323.4	218.89	2.477	
10,900.0	7,053.0	10,843.4	7,053.0	112.7	111.8	-90.00	373.8	3,945.7	541.5	317.1	224.44	2.413	
11,000.0	7,053.0	10,943.4	7,053.0	115.5	114.5	-90.00	374.6	4,045.7	540.7	310.7	230.00	2.351	
11,100.0	7,053.0	11,043.4	7,053.0	118.3	117.3	-90.00	375.3	4,145.7	539.9	304.4	235.56	2.292	
11,200.0	7,053.0	11,143.4	7,053.0	121.1	120.1	-90.00	376.0	4,245.6	539.2	298.0	241.12	2.236	
11,300.0	7,053.0	11,243.4	7,053.0	123.8	122.9	-90.00	376.8	4,345.6	538.4	291.7	246.69	2.182	
11,400.0	7,053.0	11,343.4	7,053.0	126.6	125.7	-90.00	377.5	4,445.6	537.6	285.4	252.25	2.131	
11,500.0	7,053.0	11,443.4	7,053.0	129.4	128.5	-90.00	378.3	4,545.6	536.8	279.0	257.82	2.082	
11,583.6	7,053.0	11,527.0	7,053.0	131.7	130.8	-90.00	378.9	4,629.2	536.2	273.7	262.48	2.043	
11,584.3	7,053.0	11,527.6	7,053.0	131.7	130.8	-90.00	378.9	4,629.9	536.2	273.7	262.51	2.043 SF	

Company:	Synergy Resources	Local Co-ordinate Reference:	Well SRC Wiedeman 12-5-4CHZ
Project:	Sec.5-T5N-R66W	TVD Reference:	WELL @ 4796.0ft (RKB - 13')
Reference Site:	SRC Wiedeman Pad Sec.5-T5N-R66W	MD Reference:	WELL @ 4796.0ft (RKB - 13')
Site Error:	0.0ft	North Reference:	True
Reference Well:	SRC Wiedeman 12-5-4CHZ	Survey Calculation Method:	Minimum Curvature
Well Error:	0.0ft	Output errors are at	2.00 sigma
Reference Wellbore	Wellbore #1	Database:	Landmark
Reference Design:	Plan #3 (9-24-14)	Offset TVD Reference:	Offset Datum

Offset Design												Offset Site Error:	0.0 ft
Survey Program: 0-MWD												Offset Well Error:	0.0 ft
Reference		Offset		Semi Major Axis			Distance						
Measured Depth (ft)	Vertical Depth (ft)	Measured Depth (ft)	Vertical Depth (ft)	Reference (ft)	Offset (ft)	Highside Toolface (°)	Offset Wellbore Centre +N/-S (ft)	+E/-W (ft)	Between Centres (ft)	Between Ellipses (ft)	Minimum Separation (ft)	Separation Factor	Warning
0.0	0.0	0.0	0.0	0.0	0.0	-174.68	-14.9	-1.4	15.0	15.0	0.00	N/A	
100.0	100.0	100.0	100.0	0.1	0.1	-174.68	-14.9	-1.4	15.0	14.8	0.22	66.743	
200.0	200.0	200.0	200.0	0.3	0.3	-174.68	-14.9	-1.4	15.0	14.3	0.67	22.248	
300.0	300.0	300.0	300.0	0.6	0.6	-174.68	-14.9	-1.4	15.0	13.9	1.12	13.349	
400.0	400.0	400.0	400.0	0.8	0.8	-174.68	-14.9	-1.4	15.0	13.4	1.57	9.535	
500.0	500.0	500.0	500.0	1.0	1.0	-174.68	-14.9	-1.4	15.0	13.0	2.02	7.416	
600.0	600.0	600.0	600.0	1.2	1.2	-174.68	-14.9	-1.4	15.0	12.5	2.47	6.068	
700.0	700.0	700.0	700.0	1.5	1.5	-174.68	-14.9	-1.4	15.0	12.1	2.92	5.134	
800.0	800.0	800.0	800.0	1.7	1.7	-174.68	-14.9	-1.4	15.0	11.6	3.37	4.450	
900.0	900.0	900.0	900.0	1.9	1.9	-174.68	-14.9	-1.4	15.0	11.2	3.82	3.926	
1,000.0	1,000.0	1,000.0	1,000.0	2.1	2.1	-174.68	-14.9	-1.4	15.0	10.7	4.27	3.513 CC, ES	
1,100.0	1,100.0	1,099.5	1,099.5	2.4	2.3	-172.61	-16.5	-2.1	16.6	11.9	4.69	3.547	
1,200.0	1,200.0	1,198.7	1,198.5	2.6	2.5	-168.33	-21.1	-4.4	21.6	16.5	5.10	4.247	
1,300.0	1,300.0	1,297.5	1,296.9	2.8	2.7	-164.39	-28.9	-8.1	30.1	24.6	5.51	5.463	
1,400.0	1,400.0	1,396.1	1,394.8	3.0	2.9	-161.60	-39.4	-13.1	41.8	35.9	5.94	7.033	
1,500.0	1,500.0	1,495.5	1,493.5	3.2	3.2	-19.81	-50.6	-18.5	52.6	46.3	6.32	8.316	
1,600.0	1,599.8	1,595.2	1,592.4	3.4	3.4	-20.18	-61.8	-23.8	60.1	53.4	6.70	8.973	
1,700.0	1,699.5	1,695.1	1,691.5	3.6	3.7	-21.57	-73.0	-29.2	64.4	57.3	7.08	9.087	
1,716.3	1,715.7	1,711.4	1,707.7	3.6	3.7	-21.89	-74.9	-30.1	64.7	57.6	7.15	9.061	
1,800.0	1,798.8	1,795.0	1,790.7	3.8	3.9	-23.56	-84.3	-34.6	66.6	59.1	7.49	8.884	
1,900.0	1,898.2	1,895.0	1,889.8	4.0	4.2	-25.45	-95.5	-40.0	68.8	60.9	7.92	8.689	
2,000.0	1,997.6	1,994.9	1,989.0	4.3	4.5	-27.21	-106.8	-45.4	71.1	62.8	8.36	8.510	
2,100.0	2,097.0	2,094.9	2,088.2	4.5	4.8	-28.87	-118.0	-50.8	73.5	64.7	8.81	8.345	
2,200.0	2,196.4	2,194.8	2,187.3	4.8	5.1	-30.41	-129.3	-56.2	75.9	66.7	9.27	8.193	
2,300.0	2,295.8	2,294.8	2,286.5	5.0	5.4	-31.86	-140.5	-61.6	78.4	68.7	9.74	8.053	
2,400.0	2,395.2	2,394.7	2,385.7	5.3	5.7	-33.22	-151.8	-67.0	81.0	70.7	10.22	7.923	
2,500.0	2,494.6	2,494.7	2,484.8	5.6	6.0	-34.50	-163.0	-72.3	83.5	72.8	10.71	7.802	
2,600.0	2,594.0	2,594.6	2,584.0	5.8	6.3	-35.70	-174.3	-77.7	86.1	74.9	11.20	7.689	
2,700.0	2,693.4	2,694.6	2,683.2	6.1	6.7	-36.83	-185.5	-83.1	88.8	77.1	11.71	7.584	
2,800.0	2,792.8	2,794.5	2,782.4	6.4	7.0	-37.89	-196.8	-88.5	91.5	79.3	12.22	7.487	
2,900.0	2,892.1	2,894.5	2,881.5	6.7	7.3	-38.89	-208.0	-93.9	94.2	81.5	12.74	7.396	
3,000.0	2,991.5	2,994.4	2,980.7	6.9	7.6	-39.84	-219.3	-99.3	96.9	83.7	13.26	7.310	
3,100.0	3,090.9	3,094.4	3,079.9	7.2	7.9	-40.73	-230.5	-104.7	99.7	85.9	13.79	7.230	
3,200.0	3,190.3	3,194.3	3,179.0	7.5	8.2	-41.58	-241.8	-110.1	102.5	88.2	14.32	7.155	
3,300.0	3,289.7	3,294.3	3,278.2	7.8	8.6	-42.38	-253.0	-115.5	105.3	90.4	14.86	7.085	
3,400.0	3,389.1	3,394.2	3,377.4	8.1	8.9	-43.14	-264.3	-120.9	108.1	92.7	15.41	7.019	
3,500.0	3,488.5	3,494.2	3,476.5	8.4	9.2	-43.86	-275.5	-126.3	111.0	95.0	15.95	6.956	
3,600.0	3,587.9	3,594.1	3,575.7	8.7	9.5	-44.54	-286.8	-131.6	113.8	97.3	16.50	6.898	
3,700.0	3,687.3	3,694.1	3,674.9	9.0	9.9	-45.19	-298.0	-137.0	116.7	99.7	17.06	6.842	
3,800.0	3,786.7	3,794.0	3,774.0	9.3	10.2	-45.81	-309.3	-142.4	119.6	102.0	17.62	6.790	
3,900.0	3,886.1	3,894.0	3,873.2	9.6	10.5	-46.40	-320.5	-147.8	122.5	104.3	18.18	6.741	
4,000.0	3,985.4	3,993.9	3,972.4	9.9	10.8	-46.96	-331.8	-153.2	125.4	106.7	18.74	6.694	
4,099.5	4,084.3	4,093.3	4,071.0	10.2	11.2	-47.49	-343.0	-158.6	128.3	109.0	19.30	6.650	
4,200.0	4,184.4	4,193.8	4,170.7	10.4	11.5	-47.50	-354.3	-164.0	132.5	112.7	19.81	6.688	
4,300.0	4,284.2	4,293.5	4,269.6	10.6	11.8	-46.48	-365.5	-169.4	139.0	118.8	20.20	6.880	
4,400.0	4,384.2	4,393.0	4,368.3	10.8	12.1	-44.64	-376.7	-174.7	148.0	127.5	20.52	7.214	
4,415.8	4,400.0	4,408.7	4,383.9	10.9	12.2	175.02	-378.4	-175.6	149.7	127.8	21.84	6.852	
4,500.0	4,484.2	4,492.2	4,466.8	11.0	12.5	176.95	-387.8	-180.1	158.8	136.5	22.37	7.100	
4,600.0	4,584.2	4,591.4	4,565.2	11.2	12.8	178.97	-399.0	-185.4	169.9	146.9	22.98	7.395	
4,700.0	4,684.2	4,690.6	4,663.7	11.4	13.1	-179.27	-410.2	-190.8	181.2	157.6	23.57	7.687	
4,800.0	4,784.2	4,789.9	4,762.1	11.5	13.4	-177.71	-421.4	-196.1	192.6	168.4	24.15	7.975	
4,900.0	4,884.2	4,890.4	4,861.8	11.7	13.7	-176.31	-432.6	-201.5	204.1	179.3	24.71	8.257	

CC - Min centre to center distance or convergent point, SF - min separation factor, ES - min ellipse separation

SRC Wiedeman Pad Sec.5-T5N-R66W - SRC Wiedeman 12-5-4NCHZ - Wellbore #1 - Plan #3 (9-24-14)													Offset Site Error:	0.0 ft
Survey Program: 0-MWD													Offset Well Error:	0.0 ft
Reference		Offset		Semi Major Axis			Distance							
Measured Depth (ft)	Vertical Depth (ft)	Measured Depth (ft)	Vertical Depth (ft)	Reference (ft)	Offset (ft)	Highside Toolface (°)	Offset Wellbore Centre +N/-S (ft)	+E/-W (ft)	Between Centres (ft)	Between Ellipses (ft)	Minimum Separation (ft)	Separation Factor	Warning	
5,000.0	4,984.2	4,997.1	4,968.1	11.9	14.0	-175.24	-442.2	-206.1	213.3	188.1	25.19	8.469		
5,100.0	5,084.2	5,104.5	5,075.2	12.1	14.2	-174.62	-448.2	-209.0	219.2	193.6	25.61	8.558		
5,200.0	5,184.2	5,212.3	5,183.0	12.3	14.4	-174.38	-450.6	-210.2	221.5	195.5	25.98	8.524		
5,300.0	5,284.2	5,313.5	5,284.2	12.4	14.5	-174.38	-450.7	-210.2	221.5	195.2	26.33	8.412		
5,400.0	5,384.2	5,413.5	5,384.2	12.6	14.7	-174.38	-450.7	-210.2	221.5	194.9	26.67	8.306		
5,500.0	5,484.2	5,513.5	5,484.2	12.8	14.8	-174.38	-450.7	-210.2	221.5	194.5	27.01	8.201		
5,600.0	5,584.2	5,613.5	5,584.2	13.0	15.0	-174.38	-450.7	-210.2	221.5	194.2	27.36	8.098		
5,700.0	5,684.2	5,713.5	5,684.2	13.2	15.1	-174.38	-450.7	-210.2	221.5	193.8	27.70	7.997		
5,800.0	5,784.2	5,813.5	5,784.2	13.4	15.3	-174.38	-450.7	-210.2	221.5	193.5	28.05	7.897		
5,900.0	5,884.2	5,913.5	5,884.2	13.6	15.4	-174.38	-450.7	-210.2	221.5	193.1	28.40	7.799		
6,000.0	5,984.2	6,013.5	5,984.2	13.8	15.6	-174.38	-450.7	-210.2	221.5	192.8	28.76	7.703		
6,100.0	6,084.2	6,113.5	6,084.2	14.0	15.7	-174.38	-450.7	-210.2	221.5	192.4	29.12	7.608		
6,200.0	6,184.2	6,213.5	6,184.2	14.2	15.9	-174.38	-450.7	-210.2	221.5	192.1	29.48	7.516		
6,300.0	6,284.2	6,313.5	6,284.2	14.3	16.1	-174.38	-450.7	-210.2	221.5	191.7	29.84	7.424		
6,352.6	6,336.8	6,366.1	6,336.8	14.4	16.2	-174.38	-450.7	-210.2	221.5	191.5	30.03	7.377		
6,400.0	6,384.2	6,413.5	6,384.2	14.5	16.2	96.88	-450.7	-210.2	221.7	193.8	27.92	7.940		
6,450.0	6,433.9	6,463.2	6,433.9	14.6	16.3	98.11	-450.7	-210.2	222.4	194.3	28.03	7.934		
6,500.0	6,483.2	6,512.5	6,483.2	14.7	16.4	100.12	-450.7	-210.2	223.7	195.7	28.09	7.966		
6,550.0	6,531.7	6,563.0	6,533.6	14.7	16.5	102.83	-450.7	-209.7	226.1	198.0	28.10	8.046		
6,600.0	6,579.3	6,615.8	6,586.3	14.8	16.5	105.63	-450.6	-205.7	229.0	200.9	28.09	8.154		
6,650.0	6,625.7	6,669.7	6,639.6	14.8	16.6	108.31	-450.5	-197.8	232.5	204.4	28.06	8.285		
6,700.0	6,670.7	6,724.6	6,693.1	14.8	16.7	110.85	-450.3	-185.5	236.3	208.3	28.01	8.436		
6,750.0	6,714.1	6,780.6	6,746.5	14.9	16.7	113.25	-450.0	-168.9	240.4	212.5	27.95	8.604		
6,800.0	6,755.7	6,837.6	6,799.4	14.9	16.7	115.48	-449.7	-147.7	244.8	216.9	27.87	8.783		
6,850.0	6,795.2	6,895.7	6,851.5	15.0	16.7	117.55	-449.3	-121.8	249.3	221.5	27.79	8.968		
6,900.0	6,832.4	6,954.9	6,902.1	15.0	16.8	119.43	-448.9	-91.2	253.7	226.0	27.73	9.149		
6,950.0	6,867.3	7,015.1	6,950.9	15.1	16.8	121.14	-448.3	-55.9	258.1	230.4	27.71	9.314		
7,000.0	6,899.6	7,076.4	6,997.3	15.3	16.8	122.65	-447.7	-15.9	262.3	234.5	27.75	9.452		
7,050.0	6,929.1	7,138.6	7,040.7	15.7	16.8	123.98	-447.1	28.6	266.2	238.3	27.88	9.549		
7,100.0	6,955.7	7,201.7	7,080.6	16.2	16.9	125.12	-446.3	77.4	269.7	241.6	28.12	9.592		
7,150.0	6,979.4	7,265.5	7,116.5	16.7	17.0	126.07	-445.5	130.2	272.8	244.2	28.53	9.562		
7,200.0	6,999.9	7,330.1	7,147.8	17.3	17.3	126.83	-444.7	186.6	275.3	246.2	29.11	9.457		
7,250.0	7,017.1	7,395.1	7,174.2	18.0	17.9	127.40	-443.8	246.0	277.2	247.3	29.89	9.275		
7,300.0	7,031.1	7,460.6	7,195.1	18.8	18.8	127.77	-442.8	308.0	278.5	247.6	30.89	9.017		
7,350.0	7,041.7	7,526.3	7,210.3	19.7	19.9	127.96	-441.9	371.9	279.2	247.1	32.11	8.695		
7,400.0	7,048.8	7,592.1	7,219.7	20.6	21.0	127.95	-440.9	437.0	279.1	245.6	33.53	8.324		
7,450.0	7,052.5	7,657.8	7,223.0	21.5	22.3	127.75	-439.9	502.6	278.4	243.3	35.16	7.919		
7,477.6	7,053.0	7,686.2	7,223.0	22.1	22.8	127.68	-439.5	531.0	278.1	242.1	35.98	7.731		
7,500.0	7,053.0	7,708.6	7,223.0	22.5	23.3	127.68	-439.1	553.4	278.1	241.4	36.69	7.580		
7,600.0	7,053.0	7,808.6	7,223.0	24.6	25.4	127.68	-437.6	653.3	278.1	238.1	40.02	6.949		
7,700.0	7,053.0	7,908.6	7,223.0	26.9	27.6	127.68	-436.1	753.3	278.1	234.5	43.58	6.382		
7,800.0	7,053.0	8,008.6	7,223.0	29.2	29.9	127.68	-434.6	853.3	278.1	230.8	47.30	5.880		
7,900.0	7,053.0	8,108.6	7,223.0	31.6	32.3	127.68	-433.1	953.3	278.1	227.0	51.15	5.437		
8,000.0	7,053.0	8,208.6	7,223.0	34.1	34.8	127.68	-431.6	1,053.3	278.1	223.0	55.11	5.047		
8,100.0	7,053.0	8,308.6	7,223.0	36.6	37.3	127.68	-430.1	1,153.3	278.1	219.0	59.15	4.702		
8,200.0	7,053.0	8,408.6	7,223.0	39.1	39.8	127.68	-428.5	1,253.3	278.1	214.9	63.26	4.397		
8,300.0	7,053.0	8,508.6	7,223.0	41.7	42.4	127.68	-427.0	1,353.3	278.1	210.7	67.42	4.125		
8,400.0	7,053.0	8,608.6	7,223.0	44.3	45.0	127.68	-425.5	1,453.3	278.1	206.5	71.63	3.883		
8,500.0	7,053.0	8,708.6	7,223.0	47.0	47.6	127.68	-424.0	1,553.2	278.1	202.2	75.88	3.665		
8,600.0	7,053.0	8,808.6	7,223.0	49.6	50.2	127.68	-422.5	1,653.2	278.1	198.0	80.15	3.470		
8,700.0	7,053.0	8,908.6	7,223.0	52.3	52.9	127.68	-421.0	1,753.2	278.1	193.7	84.46	3.293		
8,800.0	7,053.0	9,008.6	7,223.0	55.0	55.6	127.68	-419.5	1,853.2	278.1	189.3	88.79	3.132		

Company:	Synergy Resources	Local Co-ordinate Reference:	Well SRC Wiedeman 12-5-4CHZ
Project:	Sec.5-T5N-R66W	TVD Reference:	WELL @ 4796.0ft (RKB - 13')
Reference Site:	SRC Wiedeman Pad Sec.5-T5N-R66W	MD Reference:	WELL @ 4796.0ft (RKB - 13')
Site Error:	0.0ft	North Reference:	True
Reference Well:	SRC Wiedeman 12-5-4CHZ	Survey Calculation Method:	Minimum Curvature
Well Error:	0.0ft	Output errors are at	2.00 sigma
Reference Wellbore	Wellbore #1	Database:	Landmark
Reference Design:	Plan #3 (9-24-14)	Offset TVD Reference:	Offset Datum

Offset Design		SRC Wiedeman Pad Sec.5-T5N-R66W - SRC Wiedeman 12-5-4NCHZ - Wellbore #1 - Plan #3 (9-24-14)										Offset Site Error:		0.0 ft			
Survey Program: 0-MWD														Offset Well Error:		0.0 ft	
Reference		Offset		Semi Major Axis			Distance							Warning			
Measured Depth (ft)	Vertical Depth (ft)	Measured Depth (ft)	Vertical Depth (ft)	Reference (ft)	Offset (ft)	Highside Toolface (°)	Offset Wellbore Centre +N/-S (ft)	+E/-W (ft)	Between Centres (ft)	Between Ellipses (ft)	Minimum Separation (ft)	Separation Factor					
8,900.0	7,053.0	9,108.6	7,223.0	57.7	58.3	127.68	-418.0	1,953.2	278.1	185.0	93.14	2.986					
9,000.0	7,053.0	9,208.6	7,223.0	60.4	61.0	127.68	-416.4	2,053.2	278.1	180.6	97.50	2.852					
9,100.0	7,053.0	9,308.6	7,223.0	63.1	63.7	127.68	-414.9	2,153.2	278.1	176.2	101.88	2.730					
9,200.0	7,053.0	9,408.6	7,223.0	65.8	66.4	127.68	-413.4	2,253.2	278.1	171.8	106.27	2.617					
9,300.0	7,053.0	9,508.6	7,223.0	68.5	69.1	127.68	-411.9	2,353.2	278.1	167.4	110.68	2.513					
9,400.0	7,053.0	9,608.6	7,223.0	71.3	71.8	127.68	-410.4	2,453.1	278.1	163.0	115.09	2.416					
9,500.0	7,053.0	9,708.6	7,223.0	74.0	74.6	127.68	-408.9	2,553.1	278.1	158.6	119.52	2.327					
9,600.0	7,053.0	9,808.6	7,223.0	76.8	77.3	127.68	-407.4	2,653.1	278.1	154.2	123.95	2.244					
9,700.0	7,053.0	9,908.6	7,223.0	79.5	80.1	127.68	-405.9	2,753.1	278.1	149.7	128.39	2.166					
9,800.0	7,053.0	10,008.6	7,223.0	82.3	82.8	127.68	-404.4	2,853.1	278.1	145.3	132.84	2.094					
9,900.0	7,053.0	10,108.6	7,223.0	85.0	85.6	127.68	-402.8	2,953.1	278.1	140.8	137.29	2.026					
10,000.0	7,053.0	10,208.6	7,223.0	87.8	88.3	127.68	-401.3	3,053.1	278.1	136.4	141.75	1.962					
10,100.0	7,053.0	10,308.6	7,223.0	90.5	91.1	127.68	-399.8	3,153.1	278.1	131.9	146.21	1.902					
10,200.0	7,053.0	10,408.6	7,223.0	93.3	93.8	127.68	-398.3	3,253.1	278.1	127.4	150.68	1.846					
10,300.0	7,053.0	10,508.6	7,223.0	96.1	96.6	127.68	-396.8	3,353.0	278.1	123.0	155.15	1.793					
10,400.0	7,053.0	10,608.6	7,223.0	98.8	99.4	127.68	-395.3	3,453.0	278.1	118.5	159.62	1.742					
10,500.0	7,053.0	10,708.6	7,223.0	101.6	102.1	127.68	-393.8	3,553.0	278.1	114.0	164.10	1.695					
10,600.0	7,053.0	10,808.6	7,223.0	104.4	104.9	127.68	-392.3	3,653.0	278.1	109.5	168.58	1.650					
10,700.0	7,053.0	10,908.6	7,223.0	107.2	107.7	127.68	-390.7	3,753.0	278.1	105.0	173.07	1.607					
10,800.0	7,053.0	11,008.6	7,223.0	109.9	110.4	127.68	-389.2	3,853.0	278.1	100.6	177.55	1.566					
10,900.0	7,053.0	11,108.6	7,223.0	112.7	113.2	127.68	-387.7	3,953.0	278.1	96.1	182.04	1.528					
11,000.0	7,053.0	11,208.6	7,223.0	115.5	116.0	127.68	-386.2	4,053.0	278.1	91.6	186.53	1.491 Level 3					
11,100.0	7,053.0	11,308.6	7,223.0	118.3	118.8	127.68	-384.7	4,152.9	278.1	87.1	191.03	1.456 Level 3					
11,200.0	7,053.0	11,408.6	7,223.0	121.1	121.6	127.68	-383.2	4,252.9	278.1	82.6	195.52	1.422 Level 3					
11,300.0	7,053.0	11,508.6	7,223.0	123.8	124.3	127.68	-381.7	4,352.9	278.1	78.1	200.02	1.390 Level 3					
11,400.0	7,053.0	11,608.6	7,223.0	126.6	127.1	127.68	-380.2	4,452.9	278.1	73.6	204.52	1.360 Level 3					
11,500.0	7,053.0	11,708.6	7,223.0	129.4	129.8	127.68	-378.7	4,552.9	278.1	69.2	208.95	1.331 Level 3					
11,550.8	7,053.0	11,759.4	7,223.0	130.8	130.7	127.68	-377.9	4,603.7	278.1	67.3	210.83	1.319 Level 3					
11,583.6	7,053.0	11,770.2	7,223.0	131.7	130.9	127.68	-377.7	4,614.6	279.0	67.3	211.72	1.318 Level 3, SF					
11,584.3	7,053.0	11,770.2	7,223.0	131.7	130.9	127.68	-377.7	4,614.6	279.0	67.3	211.73	1.318 Level 3					

Company:	Synergy Resources	Local Co-ordinate Reference:	Well SRC Wiedeman 12-5-4CHZ
Project:	Sec.5-T5N-R66W	TVD Reference:	WELL @ 4796.0ft (RKB - 13')
Reference Site:	SRC Wiedeman Pad Sec.5-T5N-R66W	MD Reference:	WELL @ 4796.0ft (RKB - 13')
Site Error:	0.0ft	North Reference:	True
Reference Well:	SRC Wiedeman 12-5-4CHZ	Survey Calculation Method:	Minimum Curvature
Well Error:	0.0ft	Output errors are at	2.00 sigma
Reference Wellbore	Wellbore #1	Database:	Landmark
Reference Design:	Plan #3 (9-24-14)	Offset TVD Reference:	Offset Datum

Offset Design SRC Wiedeman Pad Sec.5-T5N-R66W - SRC Wiedeman 21-5-3CHZ - Wellbore #1 - Plan #2 (9-24-14)													Offset Site Error:	0.0 ft
Survey Program: 0-MWD													Offset Well Error:	0.0 ft
Reference	Offset	Semi Major Axis			Distance									
Measured Depth (ft)	Vertical Depth (ft)	Measured Depth (ft)	Vertical Depth (ft)	Reference (ft)	Offset (ft)	Highside Toolface (°)	Offset Wellbore Centre +N/-S (ft)	+E/-W (ft)	Between Centres (ft)	Between Ellipses (ft)	Minimum Separation (ft)	Separation Factor	Warning	
0.0	0.0	0.0	0.0	0.0	0.0	5.85	59.7	6.1	60.1					
100.0	100.0	100.0	100.0	0.1	0.1	5.85	59.7	6.1	60.1	59.8	0.22	267.196		
200.0	200.0	200.0	200.0	0.3	0.3	5.85	59.7	6.1	60.1	59.4	0.67	89.065		
300.0	300.0	300.0	300.0	0.6	0.6	5.85	59.7	6.1	60.1	58.9	1.12	53.439		
400.0	400.0	400.0	400.0	0.8	0.8	5.85	59.7	6.1	60.1	58.5	1.57	38.171		
500.0	500.0	500.0	500.0	1.0	1.0	5.85	59.7	6.1	60.1	58.0	2.02	29.688 CC, ES		
600.0	600.0	598.0	597.9	1.2	1.2	5.51	61.4	5.9	61.7	59.3	2.47	25.007		
700.0	700.0	695.7	695.5	1.5	1.5	4.59	66.4	5.3	66.7	63.8	2.92	22.876		
800.0	800.0	793.0	792.5	1.7	1.7	3.32	74.6	4.3	75.1	71.7	3.37	22.287 SF		
900.0	900.0	889.6	888.4	1.9	1.9	1.97	86.0	3.0	86.8	83.0	3.83	22.679		
1,000.0	1,000.0	987.3	985.1	2.1	2.2	0.72	100.2	1.3	101.3	97.0	4.30	23.556		
1,100.0	1,100.0	1,086.2	1,082.9	2.4	2.5	-0.25	114.7	-0.5	116.0	111.2	4.77	24.299		
1,200.0	1,200.0	1,185.1	1,180.7	2.6	2.8	-1.00	129.3	-2.3	130.8	125.5	5.26	24.879		
1,300.0	1,300.0	1,284.0	1,278.5	2.8	3.1	-1.60	143.9	-4.0	145.6	139.8	5.74	25.341		
1,400.0	1,400.0	1,382.9	1,376.3	3.0	3.5	-2.09	158.5	-5.8	160.3	154.1	6.24	25.714		
1,500.0	1,500.0	1,481.6	1,473.9	3.2	3.8	138.37	173.0	-7.5	176.4	169.9	6.55	26.929		
1,600.0	1,599.8	1,579.8	1,571.0	3.4	4.1	138.79	187.5	-9.3	195.1	188.1	6.96	28.028		
1,700.0	1,699.5	1,677.4	1,667.5	3.6	4.5	139.67	201.9	-11.0	216.4	209.0	7.37	29.349		
1,716.3	1,715.7	1,693.3	1,683.2	3.6	4.5	139.85	204.2	-11.3	220.1	212.7	7.44	29.585		
1,800.0	1,798.8	1,774.6	1,763.6	3.8	4.8	140.93	216.2	-12.7	239.5	231.7	7.80	30.685		
1,900.0	1,898.2	1,871.8	1,859.7	4.0	5.1	142.02	230.5	-14.5	262.7	254.5	8.25	31.853		
2,000.0	1,997.6	1,968.9	1,955.8	4.3	5.5	142.93	244.8	-16.2	286.0	277.3	8.70	32.882		
2,100.0	2,097.0	2,066.1	2,051.9	4.5	5.8	143.71	259.2	-17.9	309.3	300.2	9.15	33.795		
2,200.0	2,196.4	2,163.2	2,147.9	4.8	6.1	144.37	273.5	-19.6	332.7	323.1	9.61	34.607		
2,300.0	2,295.8	2,260.4	2,244.0	5.0	6.5	144.95	287.8	-21.4	356.2	346.1	10.08	35.334		
2,400.0	2,395.2	2,357.5	2,340.1	5.3	6.8	145.45	302.1	-23.1	379.6	369.1	10.55	35.986		
2,500.0	2,494.6	2,454.7	2,436.2	5.6	7.1	145.90	316.4	-24.8	403.1	392.1	11.02	36.575		
2,600.0	2,594.0	2,551.9	2,532.3	5.8	7.5	146.30	330.8	-26.5	426.6	415.1	11.50	37.108		
2,700.0	2,693.4	2,649.0	2,628.3	6.1	7.8	146.66	345.1	-28.3	450.2	438.2	11.97	37.593		
2,800.0	2,792.8	2,746.2	2,724.4	6.4	8.2	146.98	359.4	-30.0	473.7	461.2	12.45	38.036		
2,900.0	2,892.1	2,843.3	2,820.5	6.7	8.5	147.27	373.7	-31.7	497.3	484.3	12.94	38.441		
3,000.0	2,991.5	2,940.5	2,916.6	6.9	8.8	147.53	388.0	-33.4	520.8	507.4	13.42	38.813		
3,100.0	3,090.9	3,037.6	3,012.7	7.2	9.2	147.78	402.4	-35.2	544.4	530.5	13.90	39.155		
3,200.0	3,190.3	3,134.8	3,108.7	7.5	9.5	148.00	416.7	-36.9	568.0	553.6	14.39	39.472		
3,300.0	3,289.7	3,231.9	3,204.8	7.8	9.9	148.20	431.0	-38.6	591.6	576.7	14.88	39.765		
3,400.0	3,389.1	3,329.1	3,300.9	8.1	10.2	148.39	445.3	-40.3	615.2	599.8	15.36	40.037		
3,500.0	3,488.5	3,426.3	3,397.0	8.4	10.5	148.56	459.6	-42.1	638.8	622.9	15.85	40.291		
3,600.0	3,587.9	3,523.4	3,493.1	8.7	10.9	148.73	474.0	-43.8	662.4	646.0	16.34	40.527		
3,700.0	3,687.3	3,620.6	3,589.1	9.0	11.2	148.88	488.3	-45.5	686.0	669.2	16.84	40.748		
3,800.0	3,786.7	3,717.7	3,685.2	9.3	11.6	149.02	502.6	-47.2	709.6	692.3	17.33	40.955		
3,900.0	3,886.1	3,814.9	3,781.3	9.6	11.9	149.15	516.9	-49.0	733.2	715.4	17.82	41.149		
4,000.0	3,985.4	3,912.0	3,877.4	9.9	12.2	149.27	531.2	-50.7	756.9	738.5	18.31	41.331		
4,099.5	4,084.3	4,008.7	3,972.9	10.2	12.6	149.39	545.5	-52.4	780.4	761.6	18.80	41.502		
4,200.0	4,184.4	4,106.7	4,069.9	10.4	12.9	149.66	559.9	-54.2	802.6	783.3	19.34	41.505		
4,300.0	4,284.2	4,204.8	4,166.9	10.6	13.3	149.78	574.4	-55.9	821.8	802.0	19.83	41.440		
4,400.0	4,384.2	4,303.5	4,264.5	10.8	13.6	149.74	588.9	-57.6	838.1	817.8	20.30	41.282		
4,415.8	4,400.0	4,319.1	4,279.9	10.9	13.7	9.03	591.2	-57.9	840.4	816.4	23.93	35.114		
4,500.0	4,484.2	4,402.4	4,362.3	11.0	14.0	8.80	603.5	-59.4	852.4	828.0	24.37	34.972		
4,600.0	4,584.2	4,501.2	4,460.1	11.2	14.3	8.54	618.1	-61.2	866.7	841.8	24.89	34.816		
4,700.0	4,684.2	4,600.1	4,557.9	11.4	14.7	8.28	632.7	-62.9	881.1	855.6	25.42	34.665		
4,800.0	4,784.2	4,699.0	4,655.6	11.5	15.0	8.03	647.2	-64.7	895.4	869.5	25.94	34.517		
4,900.0	4,884.2	4,797.9	4,753.4	11.7	15.4	7.79	661.8	-66.4	909.8	883.3	26.47	34.373		

CC - Min centre to center distance or convergent point, SF - min separation factor, ES - min ellipse separation

Company:	Synergy Resources	Local Co-ordinate Reference:	Well SRC Wiedeman 12-5-4CHZ
Project:	Sec.5-T5N-R66W	TVD Reference:	WELL @ 4796.0ft (RKB - 13')
Reference Site:	SRC Wiedeman Pad Sec.5-T5N-R66W	MD Reference:	WELL @ 4796.0ft (RKB - 13')
Site Error:	0.0ft	North Reference:	True
Reference Well:	SRC Wiedeman 12-5-4CHZ	Survey Calculation Method:	Minimum Curvature
Well Error:	0.0ft	Output errors are at	2.00 sigma
Reference Wellbore	Wellbore #1	Database:	Landmark
Reference Design:	Plan #3 (9-24-14)	Offset TVD Reference:	Offset Datum

Offset Design												Offset Site Error:	0.0 ft
SRC Wiedeman Pad Sec.5-T5N-R66W - SRC Wiedeman 21-5-3CHZ - Wellbore #1 - Plan #2 (9-24-14)												Offset Well Error:	0.0 ft
Survey Program: 0-MWD													
Reference		Offset		Semi Major Axis			Distance						
Measured Depth (ft)	Vertical Depth (ft)	Measured Depth (ft)	Vertical Depth (ft)	Reference (ft)	Offset (ft)	Highside Toolface (°)	Offset Wellbore Centre +N/-S (ft)	+E/-W (ft)	Between Centres (ft)	Between Ellipses (ft)	Minimum Separation (ft)	Separation Factor	Warning
5,000.0	4,984.2	4,896.8	4,851.2	11.9	15.7	7.56	676.4	-68.2	924.1	897.2	27.00	34.233	
5,100.0	5,084.2	4,995.7	4,949.0	12.1	16.1	7.33	691.0	-69.9	938.5	911.0	27.53	34.097	
5,200.0	5,184.2	5,094.6	5,046.8	12.3	16.4	7.11	705.5	-71.7	952.9	924.9	28.06	33.964	
5,300.0	5,284.2	5,193.5	5,144.6	12.4	16.8	6.90	720.1	-73.5	967.4	938.8	28.59	33.835	
5,400.0	5,384.2	5,292.4	5,242.4	12.6	17.1	6.70	734.7	-75.2	981.8	952.7	29.13	33.709	
5,500.0	5,484.2	5,391.3	5,340.2	12.8	17.4	6.50	749.3	-77.0	996.3	966.6	29.66	33.587	

Company:	Synergy Resources	Local Co-ordinate Reference:	Well SRC Wiedeman 12-5-4CHZ
Project:	Sec.5-T5N-R66W	TVD Reference:	WELL @ 4796.0ft (RKB - 13')
Reference Site:	SRC Wiedeman Pad Sec.5-T5N-R66W	MD Reference:	WELL @ 4796.0ft (RKB - 13')
Site Error:	0.0ft	North Reference:	True
Reference Well:	SRC Wiedeman 12-5-4CHZ	Survey Calculation Method:	Minimum Curvature
Well Error:	0.0ft	Output errors are at	2.00 sigma
Reference Wellbore	Wellbore #1	Database:	Landmark
Reference Design:	Plan #3 (9-24-14)	Offset TVD Reference:	Offset Datum

Offset Design													Offset Site Error:	0.0 ft
Survey Program: 0-MWD													Offset Well Error:	0.0 ft
Reference		Offset		Semi Major Axis			Distance							Warning
Measured Depth (ft)	Vertical Depth (ft)	Measured Depth (ft)	Vertical Depth (ft)	Reference (ft)	Offset (ft)	Highside Toolface (°)	Offset Wellbore Centre +N/-S (ft)	+E/-W (ft)	Between Centres (ft)	Between Ellipses (ft)	Minimum Separation (ft)	Separation Factor		
0.0	0.0	0.0	0.0	0.0	0.0	5.68	44.8	4.5	45.0					
100.0	100.0	100.0	100.0	0.1	0.1	5.68	44.8	4.5	45.0	44.8	0.22	200.330		
200.0	200.0	200.0	200.0	0.3	0.3	5.68	44.8	4.5	45.0	44.4	0.67	66.777		
300.0	300.0	300.0	300.0	0.6	0.6	5.68	44.8	4.5	45.0	43.9	1.12	40.066		
400.0	400.0	400.0	400.0	0.8	0.8	5.68	44.8	4.5	45.0	43.5	1.57	28.619		
500.0	500.0	500.0	500.0	1.0	1.0	5.68	44.8	4.5	45.0	43.0	2.02	22.259		
600.0	600.0	600.0	600.0	1.2	1.2	5.68	44.8	4.5	45.0	42.6	2.47	18.212		
700.0	700.0	700.0	700.0	1.5	1.5	5.68	44.8	4.5	45.0	42.1	2.92	15.410		
800.0	800.0	800.0	800.0	1.7	1.7	5.68	44.8	4.5	45.0	41.7	3.37	13.355		
900.0	900.0	900.0	900.0	1.9	1.9	5.68	44.8	4.5	45.0	41.2	3.82	11.784		
1,000.0	1,000.0	1,000.0	1,000.0	2.1	2.1	5.68	44.8	4.5	45.0	40.8	4.27	10.544 CC, ES		
1,100.0	1,100.0	1,098.5	1,098.5	2.4	2.4	5.03	46.5	4.1	46.7	41.9	4.72	9.894		
1,200.0	1,200.0	1,196.7	1,196.6	2.6	2.6	3.34	51.4	3.0	51.6	46.4	5.16	9.993		
1,300.0	1,300.0	1,294.5	1,294.0	2.8	2.8	1.16	59.6	1.2	59.9	54.3	5.61	10.673		
1,400.0	1,400.0	1,391.7	1,390.4	3.0	3.0	-1.04	70.9	-1.3	71.6	65.5	6.06	11.804		
1,500.0	1,500.0	1,489.6	1,487.4	3.2	3.3	138.33	84.8	-4.3	87.2	80.7	6.50	13.410		
1,600.0	1,599.8	1,587.9	1,584.6	3.4	3.6	138.57	98.9	-7.4	105.5	98.6	6.90	15.282		
1,700.0	1,699.5	1,685.6	1,681.3	3.6	3.9	139.70	113.0	-10.5	126.5	119.1	7.31	17.293		
1,716.3	1,715.7	1,701.6	1,697.0	3.6	3.9	139.93	115.3	-11.0	130.1	122.8	7.38	17.635		
1,800.0	1,798.8	1,783.0	1,777.5	3.8	4.2	141.22	127.0	-13.6	149.2	141.4	7.74	19.282		
1,900.0	1,898.2	1,880.3	1,873.8	4.0	4.4	142.39	141.0	-16.7	172.0	163.8	8.17	21.045		
2,000.0	1,997.6	1,977.6	1,970.0	4.3	4.8	143.28	154.9	-19.8	194.9	186.3	8.62	22.617		
2,100.0	2,097.0	2,074.9	2,066.2	4.5	5.1	143.98	168.9	-22.8	217.8	208.8	9.07	24.019		
2,200.0	2,196.4	2,172.2	2,162.5	4.8	5.4	144.55	182.9	-25.9	240.8	231.3	9.53	25.274		
2,300.0	2,295.8	2,269.5	2,258.7	5.0	5.7	145.03	196.9	-29.0	263.8	253.8	9.99	26.402		
2,400.0	2,395.2	2,366.8	2,355.0	5.3	6.0	145.42	210.9	-32.0	286.8	276.3	10.46	27.421		
2,500.0	2,494.6	2,464.1	2,451.2	5.6	6.3	145.76	224.8	-35.1	309.8	298.8	10.93	28.343		
2,600.0	2,594.0	2,561.4	2,547.5	5.8	6.7	146.05	238.8	-38.2	332.8	321.4	11.40	29.181		
2,700.0	2,693.4	2,658.7	2,643.7	6.1	7.0	146.30	252.8	-41.3	355.8	343.9	11.88	29.945		
2,800.0	2,792.8	2,756.0	2,740.0	6.4	7.3	146.52	266.8	-44.3	378.8	366.4	12.36	30.644		
2,900.0	2,892.1	2,853.3	2,836.2	6.7	7.6	146.72	280.8	-47.4	401.8	389.0	12.84	31.285		
3,000.0	2,991.5	2,950.6	2,932.5	6.9	8.0	146.90	294.8	-50.5	424.8	411.5	13.33	31.875		
3,100.0	3,090.9	3,047.9	3,028.7	7.2	8.3	147.05	308.7	-53.6	447.9	434.1	13.81	32.420		
3,200.0	3,190.3	3,145.2	3,125.0	7.5	8.6	147.20	322.7	-56.6	470.9	456.6	14.30	32.924		
3,300.0	3,289.7	3,242.5	3,221.2	7.8	9.0	147.32	336.7	-59.7	493.9	479.1	14.79	33.391		
3,400.0	3,389.1	3,339.8	3,317.4	8.1	9.3	147.44	350.7	-62.8	517.0	501.7	15.28	33.826		
3,500.0	3,488.5	3,437.1	3,413.7	8.4	9.6	147.55	364.7	-65.9	540.0	524.2	15.78	34.231		
3,600.0	3,587.9	3,534.4	3,509.9	8.7	10.0	147.65	378.6	-68.9	563.1	546.8	16.27	34.609		
3,700.0	3,687.3	3,631.8	3,606.2	9.0	10.3	147.74	392.6	-72.0	586.1	569.3	16.76	34.963		
3,800.0	3,786.7	3,729.1	3,702.4	9.3	10.6	147.82	406.6	-75.1	609.2	591.9	17.26	35.294		
3,900.0	3,886.1	3,826.4	3,798.7	9.6	11.0	147.90	420.6	-78.1	632.2	614.4	17.76	35.606		
4,000.0	3,985.4	3,923.7	3,894.9	9.9	11.3	147.97	434.6	-81.2	655.2	637.0	18.25	35.899		
4,099.5	4,084.3	4,020.4	3,990.6	10.2	11.6	148.04	448.5	-84.3	678.2	659.4	18.75	36.173		
4,200.0	4,184.4	4,118.6	4,087.7	10.4	12.0	148.26	462.6	-87.4	699.9	680.6	19.28	36.304		
4,300.0	4,284.2	4,216.8	4,184.9	10.6	12.3	148.29	476.7	-90.5	718.6	698.8	19.77	36.350		
4,400.0	4,384.2	4,315.5	4,282.5	10.8	12.7	148.16	490.9	-93.6	734.3	714.1	20.23	36.294		
4,415.8	4,400.0	4,331.1	4,297.9	10.9	12.7	7.43	493.1	-94.1	736.6	713.7	22.88	32.185		
4,500.0	4,484.2	4,414.4	4,380.3	11.0	13.0	7.11	505.1	-96.7	748.2	724.9	23.32	32.086		
4,600.0	4,584.2	4,513.3	4,478.1	11.2	13.4	6.74	519.3	-99.8	762.1	738.3	23.83	31.978		
4,700.0	4,684.2	4,612.2	4,576.0	11.4	13.7	6.39	533.5	-103.0	776.1	751.7	24.35	31.873		
4,800.0	4,784.2	4,745.2	4,707.9	11.5	14.1	6.00	549.8	-106.5	787.9	763.0	24.89	31.654		
4,900.0	4,884.2	4,880.4	4,842.7	11.7	14.3	5.76	560.1	-108.8	795.4	770.0	25.36	31.363		

CC - Min centre to center distance or convergent point, SF - min separation factor, ES - min ellipse separation

Company:	Synergy Resources	Local Co-ordinate Reference:	Well SRC Wiedeman 12-5-4CHZ
Project:	Sec.5-T5N-R66W	TVD Reference:	WELL @ 4796.0ft (RKB - 13')
Reference Site:	SRC Wiedeman Pad Sec.5-T5N-R66W	MD Reference:	WELL @ 4796.0ft (RKB - 13')
Site Error:	0.0ft	North Reference:	True
Reference Well:	SRC Wiedeman 12-5-4CHZ	Survey Calculation Method:	Minimum Curvature
Well Error:	0.0ft	Output errors are at	2.00 sigma
Reference Wellbore	Wellbore #1	Database:	Landmark
Reference Design:	Plan #3 (9-24-14)	Offset TVD Reference:	Offset Datum

Offset Design												Offset Site Error:	0.0 ft
Survey Program: 0-MWD												Offset Well Error:	0.0 ft
Reference		Offset		Semi Major Axis			Distance						
Measured Depth (ft)	Vertical Depth (ft)	Measured Depth (ft)	Vertical Depth (ft)	Reference (ft)	Offset (ft)	Highside Toolface (°)	Offset Wellbore Centre +N/-S (ft)	+E/-W (ft)	Between Centres (ft)	Between Ellipses (ft)	Minimum Separation (ft)	Separation Factor	Warning
5,000.0	4,984.2	5,016.3	4,978.5	11.9	14.6	5.66	564.3	-109.7	798.4	772.6	25.77	30.976	
5,100.0	5,084.2	5,122.0	5,084.2	12.1	14.7	5.66	564.3	-109.7	798.4	772.3	26.12	30.565	
5,200.0	5,184.2	5,222.0	5,184.2	12.3	14.9	5.66	564.3	-109.7	798.4	771.9	26.48	30.155	
5,300.0	5,284.2	5,322.0	5,284.2	12.4	15.1	5.66	564.3	-109.7	798.4	771.6	26.84	29.752	
5,400.0	5,384.2	5,422.0	5,384.2	12.6	15.2	5.66	564.3	-109.7	798.4	771.2	27.20	29.357	
5,500.0	5,484.2	5,522.0	5,484.2	12.8	15.4	5.66	564.3	-109.7	798.4	770.9	27.56	28.970	
5,600.0	5,584.2	5,622.0	5,584.2	13.0	15.6	5.66	564.3	-109.7	798.4	770.5	27.93	28.590	
5,700.0	5,684.2	5,722.0	5,684.2	13.2	15.7	5.66	564.3	-109.7	798.4	770.1	28.29	28.218	
5,800.0	5,784.2	5,822.0	5,784.2	13.4	15.9	5.66	564.3	-109.7	798.4	769.8	28.67	27.853	
5,900.0	5,884.2	5,922.0	5,884.2	13.6	16.1	5.66	564.3	-109.7	798.4	769.4	29.04	27.496	
6,000.0	5,984.2	6,022.0	5,984.2	13.8	16.3	5.66	564.3	-109.7	798.4	769.0	29.41	27.145	
6,100.0	6,084.2	6,122.0	6,084.2	14.0	16.4	5.66	564.3	-109.7	798.4	768.6	29.79	26.802	
6,200.0	6,184.2	6,222.0	6,184.2	14.2	16.6	5.66	564.3	-109.7	798.4	768.3	30.17	26.465	
6,300.0	6,284.2	6,322.0	6,284.2	14.3	16.8	5.66	564.3	-109.7	798.4	767.9	30.55	26.135	
6,352.6	6,336.8	6,374.6	6,336.8	14.4	16.9	5.66	564.3	-109.7	798.4	767.7	30.75	25.964	
6,400.0	6,384.2	6,422.0	6,384.2	14.5	17.0	-83.60	564.3	-109.7	798.2	769.6	28.63	27.877	
6,450.0	6,433.9	6,471.7	6,433.9	14.6	17.1	-84.00	564.3	-109.7	797.7	768.9	28.82	27.682	
6,500.0	6,483.2	6,521.0	6,483.2	14.7	17.2	-84.67	564.3	-109.7	796.8	767.9	28.98	27.493	
6,550.0	6,531.7	6,567.7	6,529.8	14.7	17.2	-85.52	564.3	-109.4	795.8	766.7	29.13	27.322	
6,600.0	6,579.3	6,612.9	6,575.0	14.8	17.3	-86.39	564.4	-106.5	794.9	765.7	29.25	27.173	
6,650.0	6,625.7	6,658.8	6,620.5	14.8	17.4	-87.27	564.4	-100.7	794.2	764.8	29.38	27.033	
6,700.0	6,670.7	6,705.4	6,666.2	14.8	17.4	-88.18	564.5	-91.8	793.5	764.0	29.50	26.896	
6,750.0	6,714.1	6,752.7	6,712.0	14.9	17.5	-89.10	564.5	-79.7	793.1	763.5	29.64	26.754	
6,800.0	6,755.7	6,800.9	6,757.7	14.9	17.6	-90.03	564.7	-64.4	792.9	763.1	29.81	26.598	
6,833.6	6,782.5	6,833.8	6,788.2	14.9	17.6	-90.67	564.7	-52.1	792.9	762.9	29.95	26.474	
6,850.0	6,795.2	6,850.0	6,803.0	15.0	17.6	-90.98	564.8	-45.6	792.9	762.8	30.02	26.415	
6,900.0	6,832.4	6,900.0	6,847.8	15.0	17.7	-91.92	565.0	-23.4	793.0	762.8	30.27	26.195	
6,950.0	6,867.3	6,951.0	6,891.7	15.1	17.7	-92.86	565.1	2.5	793.4	762.8	30.61	25.923	
7,000.0	6,899.6	7,003.0	6,934.5	15.3	17.8	-93.80	565.4	32.0	794.0	762.9	31.03	25.589	
7,050.0	6,929.1	7,056.1	6,975.9	15.7	17.9	-94.73	565.6	65.3	794.7	763.1	31.56	25.182	
7,100.0	6,955.7	7,110.4	7,015.5	16.2	18.0	-95.65	565.9	102.3	795.6	763.4	32.22	24.695	
7,150.0	6,979.4	7,165.8	7,053.0	16.7	18.1	-96.55	566.2	143.2	796.7	763.6	33.02	24.126	
7,200.0	6,999.9	7,222.5	7,087.9	17.3	18.3	-97.43	566.5	187.8	797.9	763.9	33.99	23.476	
7,250.0	7,017.1	7,280.4	7,119.8	18.0	18.6	-98.28	566.8	236.1	799.1	764.0	35.12	22.754	
7,300.0	7,031.1	7,339.5	7,148.3	18.8	19.0	-99.09	567.2	287.9	800.5	764.0	36.43	21.972	
7,350.0	7,041.7	7,400.0	7,172.8	19.7	19.6	-99.86	567.6	343.1	801.8	763.9	37.92	21.146	
7,400.0	7,048.8	7,461.6	7,193.0	20.6	20.4	-100.58	568.0	401.4	803.2	763.6	39.59	20.287	
7,450.0	7,052.5	7,524.5	7,208.3	21.5	21.4	-101.24	568.5	462.3	804.4	763.0	41.42	19.422	
7,477.6	7,053.0	7,559.6	7,214.6	22.1	22.0	-101.58	568.7	496.9	805.1	762.6	42.49	18.950	
7,500.0	7,053.0	7,588.5	7,218.4	22.5	22.5	-101.85	569.0	525.5	805.5	762.1	43.40	18.562	
7,600.0	7,053.0	7,707.5	7,223.0	24.6	24.7	-102.18	569.8	644.3	805.5	757.8	47.66	16.903	
7,700.0	7,053.0	7,807.5	7,223.0	26.9	26.8	-102.20	570.5	744.3	804.7	752.8	51.89	15.509	
7,800.0	7,053.0	7,907.5	7,223.0	29.2	29.0	-102.21	571.3	844.3	804.0	747.6	56.34	14.270	
7,900.0	7,053.0	8,007.5	7,223.0	31.6	31.3	-102.22	572.0	944.3	803.2	742.2	60.96	13.176	
8,000.0	7,053.0	8,107.5	7,223.0	34.1	33.6	-102.23	572.7	1,044.3	802.4	736.7	65.71	12.211	
8,100.0	7,053.0	8,207.4	7,223.0	36.6	36.0	-102.24	573.5	1,144.3	801.7	731.1	70.57	11.359	
8,200.0	7,053.0	8,307.4	7,223.0	39.1	38.5	-102.26	574.2	1,244.3	800.9	725.4	75.52	10.605	
8,300.0	7,053.0	8,407.4	7,223.0	41.7	41.0	-102.27	574.9	1,344.3	800.1	719.6	80.54	9.935	
8,400.0	7,053.0	8,507.4	7,223.0	44.3	43.6	-102.28	575.6	1,444.2	799.4	713.8	85.61	9.337	
8,500.0	7,053.0	8,607.4	7,223.0	47.0	46.2	-102.29	576.4	1,544.2	798.6	707.9	90.73	8.802	
8,600.0	7,053.0	8,707.4	7,223.0	49.6	48.8	-102.30	577.1	1,644.2	797.8	701.9	95.89	8.320	
8,700.0	7,053.0	8,807.4	7,223.0	52.3	51.4	-102.31	577.8	1,744.2	797.1	696.0	101.09	7.885	

CC - Min centre to center distance or convergent point, SF - min separation factor, ES - min ellipse separation

Company:	Synergy Resources	Local Co-ordinate Reference:	Well SRC Wiedeman 12-5-4CHZ
Project:	Sec.5-T5N-R66W	TVD Reference:	WELL @ 4796.0ft (RKB - 13')
Reference Site:	SRC Wiedeman Pad Sec.5-T5N-R66W	MD Reference:	WELL @ 4796.0ft (RKB - 13')
Site Error:	0.0ft	North Reference:	True
Reference Well:	SRC Wiedeman 12-5-4CHZ	Survey Calculation Method:	Minimum Curvature
Well Error:	0.0ft	Output errors are at	2.00 sigma
Reference Wellbore	Wellbore #1	Database:	Landmark
Reference Design:	Plan #3 (9-24-14)	Offset TVD Reference:	Offset Datum

Offset Design		SRC Wiedeman Pad Sec.5-T5N-R66W - SRC Wiedeman 21-5-3NBHZ - Wellbore #1 - Plan #3 (9-24-14)										Offset Site Error:		0.0 ft	
Survey Program: 0-MWD												Offset Well Error:		0.0 ft	
Reference		Offset		Semi Major Axis			Distance							Warning	
Measured Depth (ft)	Vertical Depth (ft)	Measured Depth (ft)	Vertical Depth (ft)	Reference (ft)	Offset (ft)	Highside Toolface (°)	Offset Wellbore Centre +N/-S (ft)	+E/-W (ft)	Between Centres (ft)	Between Ellipses (ft)	Minimum Separation (ft)	Separation Factor			
8,800.0	7,053.0	8,907.4	7,223.0	55.0	54.1	-102.33	578.5	1,844.2	796.3	690.0	106.31	7.490			
8,900.0	7,053.0	9,007.4	7,223.0	57.7	56.7	-102.34	579.3	1,944.2	795.5	684.0	111.56	7.131			
9,000.0	7,053.0	9,107.4	7,223.0	60.4	59.4	-102.35	580.0	2,044.2	794.8	677.9	116.83	6.803			
9,100.0	7,053.0	9,207.4	7,223.0	63.1	62.1	-102.36	580.7	2,144.2	794.0	671.9	122.12	6.502			
9,200.0	7,053.0	9,307.4	7,223.0	65.8	64.8	-102.38	581.5	2,244.2	793.2	665.8	127.42	6.225			
9,300.0	7,053.0	9,407.4	7,223.0	68.5	67.5	-102.39	582.2	2,344.2	792.5	659.7	132.74	5.970			
9,400.0	7,053.0	9,507.4	7,223.0	71.3	70.2	-102.40	582.9	2,444.2	791.7	653.6	138.07	5.734			
9,500.0	7,053.0	9,607.4	7,223.0	74.0	72.9	-102.41	583.6	2,544.2	790.9	647.5	143.42	5.515			
9,600.0	7,053.0	9,707.4	7,223.0	76.8	75.7	-102.42	584.4	2,644.2	790.2	641.4	148.77	5.312			
9,700.0	7,053.0	9,807.4	7,223.0	79.5	78.4	-102.44	585.1	2,744.2	789.4	635.3	154.13	5.122			
9,800.0	7,053.0	9,907.4	7,223.0	82.3	81.1	-102.45	585.8	2,844.2	788.7	629.2	159.50	4.945			
9,900.0	7,053.0	10,007.4	7,223.0	85.0	83.9	-102.46	586.6	2,944.2	787.9	623.0	164.87	4.779			
10,000.0	7,053.0	10,107.4	7,223.0	87.8	86.6	-102.47	587.3	3,044.2	787.1	616.9	170.25	4.623			
10,100.0	7,053.0	10,207.4	7,223.0	90.5	89.4	-102.49	588.0	3,144.1	786.4	610.7	175.64	4.477			
10,200.0	7,053.0	10,307.4	7,223.0	93.3	92.1	-102.50	588.7	3,244.1	785.6	604.6	181.03	4.340			
10,300.0	7,053.0	10,407.4	7,223.0	96.1	94.9	-102.51	589.5	3,344.1	784.8	598.4	186.43	4.210			
10,400.0	7,053.0	10,507.4	7,223.0	98.8	97.7	-102.52	590.2	3,444.1	784.1	592.2	191.83	4.087			
10,500.0	7,053.0	10,607.4	7,223.0	101.6	100.4	-102.54	590.9	3,544.1	783.3	586.1	197.23	3.971			
10,600.0	7,053.0	10,707.4	7,223.0	104.4	103.2	-102.55	591.6	3,644.1	782.5	579.9	202.64	3.862			
10,700.0	7,053.0	10,807.4	7,223.0	107.2	106.0	-102.56	592.4	3,744.1	781.8	573.7	208.05	3.758			
10,800.0	7,053.0	10,907.4	7,223.0	109.9	108.7	-102.57	593.1	3,844.1	781.0	567.5	213.46	3.659			
10,900.0	7,053.0	11,007.4	7,223.0	112.7	111.5	-102.59	593.8	3,944.1	780.2	561.4	218.88	3.565			
11,000.0	7,053.0	11,107.4	7,223.0	115.5	114.3	-102.60	594.6	4,044.1	779.5	555.2	224.30	3.475			
11,100.0	7,053.0	11,207.4	7,223.0	118.3	117.0	-102.61	595.3	4,144.1	778.7	549.0	229.72	3.390			
11,200.0	7,053.0	11,307.4	7,223.0	121.1	119.8	-102.62	596.0	4,244.1	777.9	542.8	235.14	3.308			
11,300.0	7,053.0	11,407.4	7,223.0	123.8	122.6	-102.64	596.7	4,344.1	777.2	536.6	240.56	3.231			
11,400.0	7,053.0	11,507.3	7,223.0	126.6	125.4	-102.65	597.5	4,444.1	776.4	530.4	245.99	3.156			
11,500.0	7,053.0	11,607.3	7,223.0	129.4	128.2	-102.66	598.2	4,544.1	775.6	524.2	251.42	3.085			
11,583.6	7,053.0	11,691.0	7,223.0	131.7	130.5	-102.67	598.8	4,627.7	775.0	519.0	255.96	3.028			
11,584.3	7,053.0	11,691.6	7,223.0	131.7	130.5	-102.67	598.8	4,628.3	775.0	519.0	255.98	3.028 SF			

SRC Wiedeman Pad Sec.5-T5N-R66W - SRC Wiedeman 22-5-4CHZ - Wellbore #1 - Plan #2 (9-02-14)													Offset Site Error:	0.0 ft
Survey Program: 0-MWD													Offset Well Error:	0.0 ft
Reference		Offset		Semi Major Axis			Distance							
Measured Depth Depth (ft)	Vertical Depth (ft)	Measured Depth Depth (ft)	Vertical Depth (ft)	Reference (ft)	Offset (ft)	Highside Toolface (°)	Offset Wellbore Centre +N/-S (ft)	+E/-W (ft)	Between Centres (ft)	Between Ellipses (ft)	Minimum Separation (ft)	Separation Factor	Warning	
0.0	0.0	0.0	0.0	0.0	0.0	-174.68	-44.8	-4.2	45.0					
100.0	100.0	100.0	100.0	0.1	0.1	-174.68	-44.8	-4.2	45.0	44.8	0.22	200.211		
200.0	200.0	200.0	200.0	0.3	0.3	-174.68	-44.8	-4.2	45.0	44.3	0.67	66.737		
300.0	300.0	300.0	300.0	0.6	0.6	-174.68	-44.8	-4.2	45.0	43.9	1.12	40.042		
400.0	400.0	400.0	400.0	0.8	0.8	-174.68	-44.8	-4.2	45.0	43.4	1.57	28.602		
500.0	500.0	500.0	500.0	1.0	1.0	-174.68	-44.8	-4.2	45.0	43.0	2.02	22.246	CC, ES	
600.0	600.0	598.4	598.4	1.2	1.2	-174.31	-46.4	-4.6	46.7	44.2	2.44	19.112		
700.0	700.0	696.6	696.5	1.5	1.4	-173.35	-51.3	-6.0	51.8	48.9	2.85	18.146		
800.0	800.0	794.4	793.9	1.7	1.6	-172.13	-59.4	-8.2	60.2	57.0	3.28	18.355		
900.0	900.0	891.5	890.2	1.9	1.8	-170.89	-70.5	-11.3	72.1	68.4	3.73	19.320		
1,000.0	1,000.0	987.6	985.3	2.1	2.1	-169.81	-84.7	-15.2	87.3	83.1	4.20	20.768		
1,100.0	1,100.0	1,084.5	1,080.5	2.4	2.4	-168.91	-101.7	-19.9	105.4	100.7	4.70	22.424		
1,200.0	1,200.0	1,182.7	1,177.1	2.6	2.8	-168.25	-119.2	-24.8	123.9	118.7	5.21	23.786		
1,300.0	1,300.0	1,281.0	1,273.6	2.8	3.2	-167.76	-136.8	-29.7	142.4	136.7	5.73	24.871		
1,400.0	1,400.0	1,379.3	1,370.2	3.0	3.5	-167.39	-154.4	-34.5	161.0	154.7	6.25	25.749		
1,500.0	1,500.0	1,477.8	1,467.0	3.2	3.9	-26.50	-172.0	-39.4	178.0	171.6	6.39	27.842		
1,600.0	1,599.8	1,576.8	1,564.3	3.4	4.3	-26.81	-189.7	-44.3	191.9	185.1	6.81	28.183		
1,700.0	1,699.5	1,676.2	1,661.9	3.6	4.7	-27.54	-207.4	-49.2	202.7	195.5	7.24	28.018		
1,716.3	1,715.7	1,692.4	1,677.9	3.6	4.8	-27.69	-210.4	-50.1	204.2	196.9	7.31	27.950		
1,800.0	1,798.8	1,775.7	1,759.7	3.8	5.1	-28.56	-225.2	-54.2	211.6	203.9	7.68	27.545		
1,900.0	1,898.2	1,875.2	1,857.5	4.0	5.5	-29.52	-243.0	-59.1	220.6	212.4	8.14	27.086		
2,000.0	1,997.6	1,974.8	1,955.4	4.3	5.9	-30.40	-260.8	-64.0	229.5	220.9	8.61	26.654		
2,100.0	2,097.0	2,074.3	2,053.2	4.5	6.3	-31.22	-278.6	-69.0	238.6	229.5	9.09	26.248		
2,200.0	2,196.4	2,173.8	2,151.0	4.8	6.8	-31.98	-296.4	-73.9	247.6	238.1	9.57	25.867		
2,300.0	2,295.8	2,273.4	2,248.8	5.0	7.2	-32.68	-314.2	-78.8	256.8	246.7	10.07	25.509		
2,400.0	2,395.2	2,372.9	2,346.6	5.3	7.6	-33.34	-332.0	-83.8	265.9	255.3	10.56	25.172		
2,500.0	2,494.6	2,472.5	2,444.4	5.6	8.0	-33.95	-349.8	-88.7	275.1	264.0	11.07	24.856		
2,600.0	2,594.0	2,572.0	2,542.2	5.8	8.4	-34.52	-367.6	-93.6	284.3	272.7	11.58	24.558		
2,700.0	2,693.4	2,671.5	2,640.0	6.1	8.8	-35.06	-385.4	-98.6	293.5	281.5	12.09	24.279		
2,800.0	2,792.8	2,771.1	2,737.8	6.4	9.2	-35.56	-403.2	-103.5	302.8	290.2	12.61	24.015		
2,900.0	2,892.1	2,870.6	2,835.6	6.7	9.7	-36.04	-421.0	-108.4	312.1	299.0	13.13	23.767		
3,000.0	2,991.5	2,970.1	2,933.4	6.9	10.1	-36.48	-438.8	-113.4	321.4	307.7	13.66	23.533		
3,100.0	3,090.9	3,069.7	3,031.2	7.2	10.5	-36.90	-456.6	-118.3	330.7	316.5	14.19	23.312		
3,200.0	3,190.3	3,169.2	3,129.0	7.5	10.9	-37.30	-474.4	-123.2	340.1	325.3	14.72	23.104		
3,300.0	3,289.7	3,268.7	3,226.9	7.8	11.3	-37.68	-492.2	-128.2	349.4	334.2	15.25	22.906		
3,400.0	3,389.1	3,368.3	3,324.7	8.1	11.7	-38.04	-510.0	-133.1	358.8	343.0	15.79	22.720		
3,500.0	3,488.5	3,467.8	3,422.5	8.4	12.2	-38.38	-527.8	-138.0	368.2	351.8	16.33	22.542		
3,600.0	3,587.9	3,567.3	3,520.3	8.7	12.6	-38.70	-545.6	-143.0	377.6	360.7	16.88	22.374		
3,700.0	3,687.3	3,666.9	3,618.1	9.0	13.0	-39.00	-563.4	-147.9	387.0	369.6	17.42	22.215		
3,800.0	3,786.7	3,766.4	3,715.9	9.3	13.4	-39.30	-581.2	-152.8	396.4	378.4	17.97	22.063		
3,900.0	3,886.1	3,866.0	3,813.7	9.6	13.8	-39.58	-599.0	-157.8	405.8	387.3	18.51	21.919		
4,000.0	3,985.4	3,965.5	3,911.5	9.9	14.3	-39.84	-616.8	-162.7	415.3	396.2	19.06	21.782		
4,099.5	4,084.3	4,064.5	4,008.8	10.2	14.7	-40.09	-634.5	-167.6	424.7	405.0	19.61	21.651		
4,200.0	4,184.4	4,164.4	4,107.0	10.4	15.1	-40.33	-652.3	-172.5	435.5	415.4	20.12	21.641		
4,300.0	4,284.2	4,263.5	4,204.3	10.6	15.5	-40.30	-670.1	-177.5	448.9	428.4	20.57	21.829		
4,400.0	4,384.2	4,362.1	4,301.3	10.8	15.9	-40.04	-687.7	-182.3	465.0	444.1	20.96	22.184		
4,415.8	4,400.0	4,377.7	4,316.5	10.9	16.0	179.33	-690.5	-183.1	467.8	441.8	25.98	18.004		
4,500.0	4,484.2	4,460.4	4,397.8	11.0	16.3	179.85	-705.3	-187.2	482.9	456.3	26.51	18.212		
4,600.0	4,584.2	4,558.7	4,494.4	11.2	16.7	-179.58	-722.8	-192.1	500.8	473.6	27.14	18.454		
4,700.0	4,684.2	4,656.9	4,590.9	11.4	17.2	-179.05	-740.4	-196.9	518.7	491.0	27.76	18.688		
4,800.0	4,784.2	4,755.2	4,687.5	11.5	17.6	-178.55	-758.0	-201.8	536.7	508.3	28.38	18.914		
4,900.0	4,884.2	4,853.5	4,784.1	11.7	18.0	-178.09	-775.5	-206.7	554.8	525.8	29.00	19.131		

Company:	Synergy Resources	Local Co-ordinate Reference:	Well SRC Wiedeman 12-5-4CHZ
Project:	Sec.5-T5N-R66W	TVD Reference:	WELL @ 4796.0ft (RKB - 13')
Reference Site:	SRC Wiedeman Pad Sec.5-T5N-R66W	MD Reference:	WELL @ 4796.0ft (RKB - 13')
Site Error:	0.0ft	North Reference:	True
Reference Well:	SRC Wiedeman 12-5-4CHZ	Survey Calculation Method:	Minimum Curvature
Well Error:	0.0ft	Output errors are at	2.00 sigma
Reference Wellbore	Wellbore #1	Database:	Landmark
Reference Design:	Plan #3 (9-24-14)	Offset TVD Reference:	Offset Datum

Offset Design SRC Wiedeman Pad Sec.5-T5N-R66W - SRC Wiedeman 22-5-4CHZ - Wellbore #1 - Plan #2 (9-02-14)													Offset Site Error:	0.0 ft
Survey Program: 0-MWD													Offset Well Error:	0.0 ft
Reference		Offset		Semi Major Axis			Distance							Warning
Measured Depth (ft)	Vertical Depth (ft)	Measured Depth (ft)	Vertical Depth (ft)	Reference (ft)	Offset (ft)	Highside Toolface (°)	Offset Wellbore Centre +N/-S (ft)	+E/-W (ft)	Between Centres (ft)	Between Ellipses (ft)	Minimum Separation (ft)	Separation Factor		
5,000.0	4,984.2	4,951.7	4,880.6	11.9	18.4	-177.65	-793.1	-211.6	572.8	543.2	29.62	19.341		
5,100.0	5,084.2	5,050.0	4,977.2	12.1	18.8	-177.24	-810.7	-216.4	590.9	560.7	30.24	19.543		
5,200.0	5,184.2	5,148.2	5,073.7	12.3	19.2	-176.86	-828.2	-221.3	609.0	578.2	30.86	19.738		
5,300.0	5,284.2	5,246.5	5,170.3	12.4	19.6	-176.50	-845.8	-226.2	627.2	595.7	31.48	19.927		
5,400.0	5,384.2	5,344.8	5,266.8	12.6	20.1	-176.16	-863.4	-231.0	645.4	613.3	32.09	20.108		
5,500.0	5,484.2	5,443.0	5,363.4	12.8	20.5	-175.83	-881.0	-235.9	663.6	630.9	32.71	20.284		
5,600.0	5,584.2	5,541.3	5,460.0	13.0	20.9	-175.53	-898.5	-240.8	681.8	648.4	33.33	20.453		
5,700.0	5,684.2	5,667.8	5,584.7	13.2	21.3	-175.19	-918.8	-246.4	698.2	664.3	33.93	20.580		
5,800.0	5,784.2	5,798.7	5,714.6	13.4	21.6	-174.95	-934.3	-250.7	710.2	675.8	34.43	20.626		
5,900.0	5,884.2	5,930.8	5,846.3	13.6	21.8	-174.81	-944.0	-253.4	717.8	682.9	34.87	20.583		
6,000.0	5,984.2	6,063.6	5,979.0	13.8	22.0	-174.75	-947.9	-254.5	720.8	685.5	35.26	20.441		
6,100.0	6,084.2	6,168.8	6,084.2	14.0	22.1	-174.75	-948.0	-254.5	720.8	685.3	35.58	20.262		
6,200.0	6,184.2	6,268.8	6,184.2	14.2	22.2	-174.75	-948.0	-254.5	720.8	685.0	35.88	20.092		
6,300.0	6,284.2	6,368.8	6,284.2	14.3	22.3	-174.75	-948.0	-254.5	720.8	684.7	36.18	19.922		
6,352.6	6,336.8	6,421.4	6,336.8	14.4	22.4	-174.75	-948.0	-254.5	720.8	684.5	36.34	19.834		
6,400.0	6,384.2	6,468.8	6,384.2	14.5	22.4	96.23	-948.0	-254.5	721.0	691.8	29.24	24.660		
6,450.0	6,433.9	6,518.5	6,433.9	14.6	22.5	96.58	-948.0	-254.5	721.6	692.2	29.36	24.579		
6,500.0	6,483.2	6,567.8	6,483.2	14.7	22.5	97.16	-948.0	-254.5	722.6	693.2	29.45	24.538		
6,550.0	6,531.7	6,620.3	6,535.7	14.7	22.6	97.98	-948.0	-253.9	724.1	694.6	29.52	24.533		
6,600.0	6,579.3	6,677.8	6,593.0	14.8	22.6	98.88	-947.9	-249.4	725.9	696.3	29.58	24.543		
6,650.0	6,625.7	6,736.4	6,650.9	14.8	22.7	99.73	-947.8	-240.0	727.7	698.1	29.62	24.564		
6,700.0	6,670.7	6,796.3	6,709.0	14.8	22.7	100.54	-947.6	-225.6	729.5	699.9	29.67	24.588		
6,750.0	6,714.1	6,857.4	6,766.8	14.9	22.7	101.30	-947.3	-206.0	731.4	701.7	29.73	24.604		
6,800.0	6,755.7	6,919.7	6,823.9	14.9	22.7	102.00	-946.9	-181.0	733.2	703.4	29.81	24.598		
6,850.0	6,795.2	6,983.1	6,879.5	15.0	22.7	102.63	-946.4	-150.5	734.9	704.9	29.93	24.553		
6,900.0	6,832.4	7,047.6	6,933.0	15.0	22.7	103.18	-945.9	-114.6	736.4	706.3	30.12	24.450		
6,950.0	6,867.3	7,113.0	6,983.7	15.1	22.7	103.66	-945.2	-73.5	737.8	707.4	30.41	24.258		
7,000.0	6,899.6	7,179.2	7,031.1	15.3	22.7	104.05	-944.5	-27.3	739.0	708.1	30.84	23.962		
7,050.0	6,929.1	7,246.0	7,074.4	15.7	22.7	104.34	-943.8	23.6	739.8	708.4	31.42	23.549		
7,100.0	6,955.7	7,313.4	7,113.0	16.2	22.7	104.55	-942.9	78.7	740.5	708.3	32.19	23.000		
7,150.0	6,979.4	7,381.0	7,146.4	16.7	22.8	104.65	-942.0	137.5	740.8	707.6	33.19	22.316		
7,200.0	6,999.9	7,448.7	7,174.2	17.3	22.9	104.65	-941.1	199.2	740.7	706.3	34.41	21.527		
7,250.0	7,017.1	7,516.3	7,196.0	18.0	23.1	104.55	-940.1	263.2	740.4	704.6	35.87	20.643		
7,300.0	7,031.1	7,583.7	7,211.6	18.8	23.4	104.35	-939.1	328.7	739.8	702.3	37.53	19.712		
7,350.0	7,041.7	7,650.5	7,220.9	19.7	23.9	104.05	-938.1	394.9	738.9	699.5	39.38	18.765		
7,400.0	7,048.8	7,716.7	7,224.0	20.6	24.7	103.66	-937.1	460.9	737.7	696.4	41.38	17.827		
7,450.0	7,052.5	7,766.7	7,224.0	21.5	25.4	103.45	-936.3	511.0	736.9	693.7	43.19	17.061		
7,477.6	7,053.0	7,794.3	7,224.0	22.1	25.8	103.42	-935.9	538.6	736.8	692.6	44.19	16.673		
7,500.0	7,053.0	7,816.7	7,224.0	22.5	26.2	103.42	-935.6	560.9	736.8	691.7	45.07	16.347		
7,600.0	7,053.0	7,916.7	7,224.0	24.6	28.0	103.42	-934.1	660.9	736.7	687.6	49.15	14.989		
7,700.0	7,053.0	8,016.7	7,224.0	26.9	30.0	103.42	-932.5	760.9	736.7	683.2	53.48	13.775		
7,800.0	7,053.0	8,116.7	7,224.0	29.2	32.2	103.42	-931.0	860.9	736.7	678.7	58.01	12.700		
7,900.0	7,053.0	8,216.7	7,224.0	31.6	34.5	103.42	-929.5	960.9	736.7	674.0	62.69	11.752		
8,000.0	7,053.0	8,316.7	7,224.0	34.1	36.8	103.42	-928.0	1,060.9	736.7	669.2	67.48	10.917		
8,100.0	7,053.0	8,416.7	7,224.0	36.6	39.3	103.42	-926.4	1,160.9	736.7	664.3	72.37	10.179		
8,200.0	7,053.0	8,516.7	7,224.0	39.1	41.7	103.42	-924.9	1,260.9	736.7	659.3	77.34	9.525		
8,300.0	7,053.0	8,616.7	7,224.0	41.7	44.3	103.42	-923.4	1,360.9	736.7	654.3	82.38	8.943		
8,400.0	7,053.0	8,716.7	7,224.0	44.3	46.8	103.42	-921.9	1,460.8	736.6	649.2	87.46	8.423		
8,500.0	7,053.0	8,816.7	7,224.0	47.0	49.4	103.42	-920.4	1,560.8	736.6	644.0	92.59	7.956		
8,600.0	7,053.0	8,916.7	7,224.0	49.6	52.0	103.42	-918.8	1,660.8	736.6	638.9	97.76	7.535		
8,700.0	7,053.0	9,016.7	7,224.0	52.3	54.6	103.42	-917.3	1,760.8	736.6	633.7	102.96	7.155		
8,800.0	7,053.0	9,116.7	7,224.0	55.0	57.3	103.42	-915.8	1,860.8	736.6	628.4	108.18	6.809		

CC - Min centre to center distance or convergent point, SF - min separation factor, ES - min ellipse separation

Company:	Synergy Resources	Local Co-ordinate Reference:	Well SRC Wiedeman 12-5-4CHZ
Project:	Sec.5-T5N-R66W	TVD Reference:	WELL @ 4796.0ft (RKB - 13')
Reference Site:	SRC Wiedeman Pad Sec.5-T5N-R66W	MD Reference:	WELL @ 4796.0ft (RKB - 13')
Site Error:	0.0ft	North Reference:	True
Reference Well:	SRC Wiedeman 12-5-4CHZ	Survey Calculation Method:	Minimum Curvature
Well Error:	0.0ft	Output errors are at	2.00 sigma
Reference Wellbore	Wellbore #1	Database:	Landmark
Reference Design:	Plan #3 (9-24-14)	Offset TVD Reference:	Offset Datum

Offset Design SRC Wiedeman Pad Sec.5-T5N-R66W - SRC Wiedeman 22-5-4CHZ - Wellbore #1 - Plan #2 (9-02-14)													Offset Site Error:	0.0 ft
Survey Program: 0-MWD													Offset Well Error:	0.0 ft
Reference		Offset		Semi Major Axis			Distance						Warning	
Measured Depth (ft)	Vertical Depth (ft)	Measured Depth (ft)	Vertical Depth (ft)	Reference (ft)	Offset (ft)	Highside Toolface (°)	Offset Wellbore Centre +N/-S (ft)	+E/-W (ft)	Between Centres (ft)	Between Ellipses (ft)	Minimum Separation (ft)	Separation Factor		
8,900.0	7,053.0	9,216.7	7,224.0	57.7	59.9	103.42	-914.3	1,960.8	736.6	623.2	113.43	6.494		
9,000.0	7,053.0	9,316.7	7,224.0	60.4	62.6	103.42	-912.7	2,060.8	736.6	617.9	118.70	6.206		
9,100.0	7,053.0	9,416.7	7,224.0	63.1	65.3	103.42	-911.2	2,160.8	736.6	612.6	123.98	5.941		
9,200.0	7,053.0	9,516.7	7,224.0	65.8	67.9	103.42	-909.7	2,260.8	736.6	607.3	129.28	5.697		
9,300.0	7,053.0	9,616.7	7,224.0	68.5	70.6	103.42	-908.2	2,360.7	736.5	601.9	134.60	5.472		
9,400.0	7,053.0	9,716.7	7,224.0	71.3	73.3	103.42	-906.6	2,460.7	736.5	596.6	139.92	5.264		
9,500.0	7,053.0	9,816.7	7,224.0	74.0	76.1	103.42	-905.1	2,560.7	736.5	591.3	145.26	5.070		
9,600.0	7,053.0	9,916.7	7,224.0	76.8	78.8	103.43	-903.6	2,660.7	736.5	585.9	150.61	4.890		
9,700.0	7,053.0	10,016.7	7,224.0	79.5	81.5	103.43	-902.1	2,760.7	736.5	580.5	155.96	4.722		
9,800.0	7,053.0	10,116.7	7,224.0	82.3	84.2	103.43	-900.5	2,860.7	736.5	575.2	161.33	4.565		
9,900.0	7,053.0	10,216.7	7,224.0	85.0	87.0	103.43	-899.0	2,960.7	736.5	569.8	166.70	4.418		
10,000.0	7,053.0	10,316.7	7,224.0	87.8	89.7	103.43	-897.5	3,060.7	736.5	564.4	172.07	4.280		
10,100.0	7,053.0	10,416.7	7,224.0	90.5	92.5	103.43	-896.0	3,160.6	736.5	559.0	177.45	4.150		
10,200.0	7,053.0	10,516.7	7,224.0	93.3	95.2	103.43	-894.5	3,260.6	736.4	553.6	182.84	4.028		
10,300.0	7,053.0	10,616.7	7,224.0	96.1	98.0	103.43	-892.9	3,360.6	736.4	548.2	188.23	3.912		
10,400.0	7,053.0	10,716.7	7,224.0	98.8	100.7	103.43	-891.4	3,460.6	736.4	542.8	193.63	3.803		
10,500.0	7,053.0	10,816.7	7,224.0	101.6	103.5	103.43	-889.9	3,560.6	736.4	537.4	199.03	3.700		
10,600.0	7,053.0	10,916.7	7,224.0	104.4	106.2	103.43	-888.4	3,660.6	736.4	532.0	204.43	3.602		
10,700.0	7,053.0	11,016.7	7,224.0	107.2	109.0	103.43	-886.8	3,760.6	736.4	526.5	209.84	3.509		
10,800.0	7,053.0	11,116.7	7,224.0	109.9	111.7	103.43	-885.3	3,860.6	736.4	521.1	215.25	3.421		
10,900.0	7,053.0	11,216.7	7,224.0	112.7	114.5	103.43	-883.8	3,960.6	736.4	515.7	220.67	3.337		
11,000.0	7,053.0	11,316.7	7,224.0	115.5	117.3	103.43	-882.3	4,060.5	736.4	510.3	226.08	3.257		
11,100.0	7,053.0	11,416.7	7,224.0	118.3	120.0	103.43	-880.7	4,160.5	736.3	504.8	231.50	3.181		
11,200.0	7,053.0	11,516.7	7,224.0	121.1	122.8	103.43	-879.2	4,260.5	736.3	499.4	236.92	3.108		
11,300.0	7,053.0	11,616.7	7,224.0	123.8	125.6	103.43	-877.7	4,360.5	736.3	494.0	242.35	3.038		
11,400.0	7,053.0	11,716.7	7,224.0	126.6	128.4	103.43	-876.2	4,460.5	736.3	488.5	247.77	2.972		
11,500.0	7,053.0	11,816.7	7,224.0	129.4	131.1	103.43	-874.7	4,560.5	736.3	483.1	253.20	2.908		
11,505.2	7,053.0	11,822.0	7,224.0	129.6	131.3	103.43	-874.6	4,565.7	736.3	482.8	253.48	2.905		
11,583.6	7,053.0	11,832.8	7,224.0	131.7	131.6	103.43	-874.4	4,576.5	739.4	483.5	255.91	2.889 SF		
11,584.3	7,053.0	11,832.8	7,224.0	131.7	131.6	103.43	-874.4	4,576.5	739.4	483.5	255.92	2.889		

Company:	Synergy Resources	Local Co-ordinate Reference:	Well SRC Wiedeman 12-5-4CHZ
Project:	Sec.5-T5N-R66W	TVD Reference:	WELL @ 4796.0ft (RKB - 13')
Reference Site:	SRC Wiedeman Pad Sec.5-T5N-R66W	MD Reference:	WELL @ 4796.0ft (RKB - 13')
Site Error:	0.0ft	North Reference:	True
Reference Well:	SRC Wiedeman 12-5-4CHZ	Survey Calculation Method:	Minimum Curvature
Well Error:	0.0ft	Output errors are at	2.00 sigma
Reference Wellbore	Wellbore #1	Database:	Landmark
Reference Design:	Plan #3 (9-24-14)	Offset TVD Reference:	Offset Datum

Offset Design													Offset Site Error:	0.0 ft
Survey Program: 0-MWD													Offset Well Error:	0.0 ft
Reference		Offset		Semi Major Axis			Distance							Warning
Measured Depth (ft)	Vertical Depth (ft)	Measured Depth (ft)	Vertical Depth (ft)	Reference (ft)	Offset (ft)	Highside Toolface (°)	Offset Wellbore Centre +N/-S (ft)	+E/-W (ft)	Between Centres (ft)	Between Ellipses (ft)	Minimum Separation (ft)	Separation Factor		
0.0	0.0	0.0	0.0	0.0	0.0	-174.68	-29.9	-2.8	30.0					
100.0	100.0	100.0	100.0	0.1	0.1	-174.68	-29.9	-2.8	30.0	29.8	0.22	133.504		
200.0	200.0	200.0	200.0	0.3	0.3	-174.68	-29.9	-2.8	30.0	29.3	0.67	44.501		
300.0	300.0	300.0	300.0	0.6	0.6	-174.68	-29.9	-2.8	30.0	28.9	1.12	26.701		
400.0	400.0	400.0	400.0	0.8	0.8	-174.68	-29.9	-2.8	30.0	28.4	1.57	19.072		
500.0	500.0	500.0	500.0	1.0	1.0	-174.68	-29.9	-2.8	30.0	28.0	2.02	14.834		
600.0	600.0	600.0	600.0	1.2	1.2	-174.68	-29.9	-2.8	30.0	27.5	2.47	12.137		
700.0	700.0	700.0	700.0	1.5	1.5	-174.68	-29.9	-2.8	30.0	27.1	2.92	10.270		
800.0	800.0	800.0	800.0	1.7	1.7	-174.68	-29.9	-2.8	30.0	26.6	3.37	8.900 CC, ES		
900.0	900.0	898.9	898.9	1.9	1.9	-173.99	-31.5	-3.3	31.7	27.9	3.79	8.359		
1,000.0	1,000.0	997.7	997.5	2.1	2.1	-172.30	-36.4	-4.9	36.8	32.6	4.20	8.763		
1,100.0	1,100.0	1,095.9	1,095.4	2.4	2.3	-170.34	-44.4	-7.6	45.3	40.6	4.61	9.808		
1,200.0	1,200.0	1,193.5	1,192.2	2.6	2.5	-168.59	-55.5	-11.2	57.2	52.1	5.05	11.319		
1,300.0	1,300.0	1,290.6	1,288.2	2.8	2.7	-167.18	-69.6	-15.8	72.4	66.9	5.51	13.145		
1,400.0	1,400.0	1,389.3	1,385.5	3.0	3.0	-166.19	-85.0	-20.9	88.7	82.7	5.98	14.838		
1,500.0	1,500.0	1,488.2	1,483.1	3.2	3.3	-25.10	-100.3	-25.9	103.4	97.1	6.31	16.396		
1,600.0	1,599.8	1,587.5	1,581.1	3.4	3.6	-25.53	-115.7	-31.0	115.0	108.3	6.70	17.171		
1,700.0	1,699.5	1,687.1	1,679.3	3.6	4.0	-26.61	-131.2	-36.1	123.6	116.5	7.10	17.394		
1,716.3	1,715.7	1,703.4	1,695.4	3.6	4.0	-26.84	-133.8	-36.9	124.7	117.5	7.17	17.386		
1,800.0	1,798.8	1,786.8	1,777.7	3.8	4.3	-28.06	-146.7	-41.2	130.1	122.6	7.53	17.277		
1,900.0	1,898.2	1,886.5	1,876.1	4.0	4.7	-29.39	-162.2	-46.3	136.7	128.7	7.98	17.142		
2,000.0	1,997.6	1,986.3	1,974.5	4.3	5.0	-30.60	-177.7	-51.4	143.4	135.0	8.43	17.007		
2,100.0	2,097.0	2,086.0	2,072.9	4.5	5.4	-31.70	-193.2	-56.5	150.1	141.2	8.90	16.874		
2,200.0	2,196.4	2,185.7	2,171.3	4.8	5.8	-32.71	-208.7	-61.6	156.9	147.5	9.37	16.743		
2,300.0	2,295.8	2,285.5	2,269.7	5.0	6.1	-33.63	-224.2	-66.6	163.7	153.9	9.85	16.615		
2,400.0	2,395.2	2,385.2	2,368.1	5.3	6.5	-34.48	-239.7	-71.7	170.6	160.2	10.34	16.491		
2,500.0	2,494.6	2,484.9	2,466.5	5.6	6.9	-35.27	-255.2	-76.8	177.5	166.6	10.84	16.370		
2,600.0	2,594.0	2,584.7	2,564.9	5.8	7.2	-35.99	-270.7	-81.9	184.4	173.0	11.34	16.254		
2,700.0	2,693.4	2,684.4	2,663.3	6.1	7.6	-36.66	-286.2	-87.0	191.3	179.5	11.85	16.142		
2,800.0	2,792.8	2,784.1	2,761.6	6.4	8.0	-37.29	-301.7	-92.1	198.3	185.9	12.37	16.035		
2,900.0	2,892.1	2,883.9	2,860.0	6.7	8.4	-37.87	-317.2	-97.2	205.3	192.4	12.89	15.932		
3,000.0	2,991.5	2,983.6	2,958.4	6.9	8.7	-38.42	-332.7	-102.3	212.3	198.9	13.41	15.833		
3,100.0	3,090.9	3,083.3	3,056.8	7.2	9.1	-38.93	-348.2	-107.4	219.3	205.4	13.94	15.739		
3,200.0	3,190.3	3,183.1	3,155.2	7.5	9.5	-39.40	-363.6	-112.5	226.4	211.9	14.47	15.649		
3,300.0	3,289.7	3,282.8	3,253.6	7.8	9.9	-39.85	-379.1	-117.6	233.5	218.5	15.00	15.563		
3,400.0	3,389.1	3,382.5	3,352.0	8.1	10.3	-40.27	-394.6	-122.7	240.5	225.0	15.54	15.480		
3,500.0	3,488.5	3,482.3	3,450.4	8.4	10.6	-40.67	-410.1	-127.8	247.6	231.5	16.08	15.401		
3,600.0	3,587.9	3,582.0	3,548.8	8.7	11.0	-41.05	-425.6	-132.8	254.7	238.1	16.62	15.326		
3,700.0	3,687.3	3,681.7	3,647.2	9.0	11.4	-41.40	-441.1	-137.9	261.8	244.7	17.17	15.254		
3,800.0	3,786.7	3,781.5	3,745.6	9.3	11.8	-41.74	-456.6	-143.0	269.0	251.2	17.71	15.185		
3,900.0	3,886.1	3,881.2	3,844.0	9.6	12.2	-42.06	-472.1	-148.1	276.1	257.8	18.26	15.119		
4,000.0	3,985.4	3,980.9	3,942.3	9.9	12.5	-42.36	-487.6	-153.2	283.2	264.4	18.81	15.056		
4,099.5	4,084.3	4,080.1	4,040.2	10.2	12.9	-42.65	-503.0	-158.3	290.3	271.0	19.36	14.995		
4,200.0	4,184.4	4,180.3	4,139.0	10.4	13.3	-42.81	-518.6	-163.4	298.8	278.9	19.87	15.037		
4,300.0	4,284.2	4,279.7	4,237.1	10.6	13.7	-42.56	-534.0	-168.5	309.8	289.5	20.30	15.258		
4,400.0	4,384.2	4,378.7	4,334.7	10.8	14.1	-41.95	-549.4	-173.5	323.4	302.7	20.68	15.636		
4,415.8	4,400.0	4,394.3	4,350.1	10.9	14.1	177.48	-551.8	-174.3	325.8	301.8	24.00	13.576		
4,500.0	4,484.2	4,477.3	4,432.0	11.0	14.5	178.30	-564.7	-178.6	338.7	314.2	24.52	13.816		
4,600.0	4,584.2	4,576.0	4,529.4	11.2	14.8	179.20	-580.1	-183.6	354.2	329.0	25.12	14.098		
4,700.0	4,684.2	4,674.6	4,626.7	11.4	15.2	-179.98	-595.4	-188.6	369.7	344.0	25.72	14.372		
4,800.0	4,784.2	4,773.3	4,724.0	11.5	15.6	-179.22	-610.7	-193.7	385.3	359.0	26.32	14.637		
4,900.0	4,884.2	4,871.9	4,821.3	11.7	16.0	-178.52	-626.0	-198.7	400.9	374.0	26.92	14.893		

CC - Min centre to center distance or convergent point, SF - min separation factor, ES - min ellipse separation

Company:	Synergy Resources	Local Co-ordinate Reference:	Well SRC Wiedeman 12-5-4CHZ
Project:	Sec.5-T5N-R66W	TVD Reference:	WELL @ 4796.0ft (RKB - 13')
Reference Site:	SRC Wiedeman Pad Sec.5-T5N-R66W	MD Reference:	WELL @ 4796.0ft (RKB - 13')
Site Error:	0.0ft	North Reference:	True
Reference Well:	SRC Wiedeman 12-5-4CHZ	Survey Calculation Method:	Minimum Curvature
Well Error:	0.0ft	Output errors are at	2.00 sigma
Reference Wellbore	Wellbore #1	Database:	Landmark
Reference Design:	Plan #3 (9-24-14)	Offset TVD Reference:	Offset Datum

Offset Design SRC Wiedeman Pad Sec.5-T5N-R66W - SRC Wiedeman 22-5-4NBHZ - Wellbore #1 - Plan #3 (9-24-1													Offset Site Error:	0.0 ft
Survey Program: 0-MWD													Offset Well Error:	0.0 ft
Reference		Offset		Semi Major Axis			Distance							Warning
Measured Depth (ft)	Vertical Depth (ft)	Measured Depth (ft)	Vertical Depth (ft)	Reference (ft)	Offset (ft)	Highside Toolface (°)	Offset Wellbore Centre +N/-S (ft)	+E/-W (ft)	Between Centres (ft)	Between Ellipses (ft)	Minimum Separation (ft)	Separation Factor		
5,000.0	4,984.2	4,970.6	4,918.7	11.9	16.3	-177.87	-641.4	-203.7	416.6	389.1	27.52	15.141		
5,100.0	5,084.2	5,069.2	5,016.0	12.1	16.7	-177.27	-656.7	-208.8	432.4	404.3	28.11	15.382		
5,200.0	5,184.2	5,167.9	5,113.3	12.3	17.1	-176.72	-672.0	-213.8	448.2	419.5	28.70	15.614		
5,300.0	5,284.2	5,266.5	5,210.6	12.4	17.5	-176.20	-687.4	-218.9	464.0	434.7	29.30	15.839		
5,400.0	5,384.2	5,380.2	5,323.0	12.6	17.8	-175.68	-703.6	-224.2	478.7	448.8	29.84	16.044		
5,500.0	5,484.2	5,499.2	5,441.2	12.8	18.1	-175.31	-716.1	-228.3	489.5	459.2	30.31	16.147		
5,600.0	5,584.2	5,619.0	5,560.7	13.0	18.3	-175.09	-724.1	-230.9	496.2	465.5	30.74	16.145		
5,700.0	5,684.2	5,739.3	5,681.0	13.2	18.5	-175.00	-727.2	-232.0	498.9	467.8	31.12	16.034		
5,800.0	5,784.2	5,842.5	5,784.2	13.4	18.6	-175.00	-727.3	-232.0	499.0	467.5	31.45	15.868		
5,900.0	5,884.2	5,942.5	5,884.2	13.6	18.7	-175.00	-727.3	-232.0	499.0	467.2	31.76	15.710		
6,000.0	5,984.2	6,042.5	5,984.2	13.8	18.9	-175.00	-727.3	-232.0	499.0	466.9	32.08	15.553		
6,100.0	6,084.2	6,142.5	6,084.2	14.0	19.0	-175.00	-727.3	-232.0	499.0	466.6	32.40	15.398		
6,200.0	6,184.2	6,242.5	6,184.2	14.2	19.1	-175.00	-727.3	-232.0	499.0	466.2	32.73	15.245		
6,300.0	6,284.2	6,342.5	6,284.2	14.3	19.2	-175.00	-727.3	-232.0	499.0	465.9	33.06	15.094		
6,352.6	6,336.8	6,395.1	6,336.8	14.4	19.3	-175.00	-727.3	-232.0	499.0	465.7	33.23	15.015		
6,400.0	6,384.2	6,446.1	6,387.8	14.5	19.4	95.85	-727.3	-230.2	499.0	470.4	28.56	17.473		
6,450.0	6,433.9	6,500.0	6,441.3	14.6	19.4	95.81	-727.2	-224.3	498.9	470.2	28.70	17.383		
6,500.0	6,483.2	6,553.7	6,494.1	14.7	19.5	95.73	-727.0	-214.5	498.9	470.0	28.83	17.306		
6,550.0	6,531.7	6,607.4	6,546.0	14.7	19.5	95.63	-726.8	-200.7	498.8	469.8	28.93	17.238		
6,600.0	6,579.3	6,661.0	6,596.7	14.8	19.5	95.50	-726.5	-183.2	498.7	469.6	29.03	17.175		
6,650.0	6,625.7	6,714.5	6,645.7	14.8	19.5	95.33	-726.2	-161.9	498.5	469.4	29.13	17.111		
6,700.0	6,670.7	6,767.9	6,693.0	14.8	19.5	95.14	-725.8	-137.1	498.4	469.1	29.25	17.039		
6,750.0	6,714.1	6,821.1	6,738.1	14.9	19.5	94.93	-725.4	-109.0	498.2	468.8	29.39	16.948		
6,800.0	6,755.7	6,874.2	6,780.9	14.9	19.5	94.68	-724.9	-77.7	498.0	468.4	29.59	16.831		
6,850.0	6,795.2	6,927.0	6,821.2	15.0	19.5	94.42	-724.4	-43.4	497.8	468.0	29.86	16.674		
6,900.0	6,832.4	6,979.7	6,858.6	15.0	19.5	94.13	-723.9	-6.4	497.6	467.4	30.22	16.469		
6,950.0	6,867.3	7,032.2	6,893.1	15.1	19.6	93.82	-723.3	33.1	497.5	466.8	30.69	16.207		
7,000.0	6,899.6	7,084.4	6,924.5	15.3	19.6	93.50	-722.6	74.9	497.3	466.0	31.30	15.885		
7,050.0	6,929.1	7,136.4	6,952.7	15.7	19.6	93.15	-722.0	118.6	497.1	465.0	32.07	15.499		
7,100.0	6,955.7	7,188.2	6,977.5	16.2	19.7	92.79	-721.3	164.0	496.9	463.9	33.00	15.056		
7,150.0	6,979.4	7,239.7	6,998.8	16.7	19.9	92.42	-720.6	210.9	496.8	462.7	34.11	14.565		
7,200.0	6,999.9	7,291.0	7,016.7	17.3	20.1	92.04	-719.8	258.9	496.6	461.3	35.38	14.036		
7,250.0	7,017.1	7,342.0	7,031.0	18.0	20.4	91.64	-719.1	307.9	496.5	459.7	36.82	13.485		
7,300.0	7,031.1	7,392.8	7,041.7	18.8	21.0	91.24	-718.3	357.5	496.4	458.0	38.41	12.925		
7,350.0	7,041.7	7,443.3	7,048.9	19.7	21.7	90.84	-717.6	407.5	496.4	456.2	40.13	12.368		
7,400.0	7,048.8	7,493.6	7,052.5	20.6	22.5	90.43	-716.8	457.6	496.3	454.4	41.97	11.827		
7,450.0	7,052.5	7,543.6	7,053.0	21.5	23.4	90.06	-716.0	507.6	496.3	452.4	43.90	11.305		
7,477.6	7,053.0	7,571.2	7,053.0	22.1	23.9	90.00	-715.6	535.2	496.3	451.3	45.00	11.030		
7,500.0	7,053.0	7,593.6	7,053.0	22.5	24.3	90.00	-715.3	557.6	496.3	450.4	45.89	10.815		
7,600.0	7,053.0	7,693.6	7,053.0	24.6	26.3	90.00	-713.8	657.6	496.3	446.2	50.11	9.904		
7,700.0	7,053.0	7,793.6	7,053.0	26.9	28.5	90.00	-712.3	757.5	496.3	441.7	54.58	9.093		
7,800.0	7,053.0	7,893.6	7,053.0	29.2	30.8	90.00	-710.7	857.5	496.3	437.0	59.25	8.377		
7,900.0	7,053.0	7,993.6	7,053.0	31.6	33.2	90.00	-709.2	957.5	496.3	432.2	64.06	7.747		
8,000.0	7,053.0	8,093.6	7,053.0	34.1	35.6	90.00	-707.7	1,057.5	496.3	427.3	69.00	7.192		
8,100.0	7,053.0	8,193.6	7,053.0	36.6	38.1	90.00	-706.2	1,157.5	496.3	422.2	74.04	6.703		
8,200.0	7,053.0	8,293.6	7,053.0	39.1	40.6	90.00	-704.7	1,257.5	496.3	417.1	79.15	6.270		
8,300.0	7,053.0	8,393.6	7,053.0	41.7	43.1	90.00	-703.1	1,357.5	496.3	411.9	84.32	5.885		
8,400.0	7,053.0	8,493.6	7,053.0	44.3	45.7	90.00	-701.6	1,457.5	496.3	406.7	89.55	5.542		
8,500.0	7,053.0	8,593.6	7,053.0	47.0	48.3	90.00	-700.1	1,557.5	496.2	401.4	94.82	5.234		
8,600.0	7,053.0	8,693.6	7,053.0	49.6	51.0	90.00	-698.6	1,657.4	496.2	396.1	100.13	4.956		
8,700.0	7,053.0	8,793.6	7,053.0	52.3	53.6	90.00	-697.1	1,757.4	496.2	390.8	105.47	4.705		
8,800.0	7,053.0	8,893.6	7,053.0	55.0	56.3	90.00	-695.6	1,857.4	496.2	385.4	110.83	4.477		

CC - Min centre to center distance or convergent point, SF - min separation factor, ES - min ellipse separation

Offset Design													Offset Site Error:	
Survey Program: 0-MWD													Offset Well Error:	
Reference		Offset		Semi Major Axis			Distance						Warning	
Measured Depth	Vertical Depth	Measured Depth	Vertical Depth	Reference	Offset	Highside Toolface	Offset Wellbore Centre		Between Centres	Between Ellipses	Minimum Separation	Separation Factor		
(ft)	(ft)	(ft)	(ft)	(ft)	(ft)	(°)	+N/-S (ft)	+E/-W (ft)	(ft)	(ft)	(ft)			
8,900.0	7,053.0	8,993.6	7,053.0	57.7	59.0	90.00	-694.0	1,957.4	496.2	380.0	116.22	4.270		
9,000.0	7,053.0	9,093.6	7,053.0	60.4	61.6	90.00	-692.5	2,057.4	496.2	374.6	121.63	4.080		
9,100.0	7,053.0	9,193.6	7,053.0	63.1	64.3	90.00	-691.0	2,157.4	496.2	369.1	127.06	3.905		
9,200.0	7,053.0	9,293.6	7,053.0	65.8	67.1	90.00	-689.5	2,257.4	496.2	363.7	132.50	3.745		
9,300.0	7,053.0	9,393.6	7,053.0	68.5	69.8	90.00	-688.0	2,357.4	496.2	358.2	137.96	3.597		
9,400.0	7,053.0	9,493.6	7,053.0	71.3	72.5	90.00	-686.4	2,457.3	496.2	352.8	143.42	3.460		
9,500.0	7,053.0	9,593.6	7,053.0	74.0	75.2	90.00	-684.9	2,557.3	496.2	347.3	148.90	3.332		
9,600.0	7,053.0	9,693.6	7,053.0	76.8	77.9	90.00	-683.4	2,657.3	496.2	341.8	154.39	3.214		
9,700.0	7,053.0	9,793.6	7,053.0	79.5	80.7	90.00	-681.9	2,757.3	496.2	336.3	159.89	3.103		
9,800.0	7,053.0	9,893.6	7,053.0	82.3	83.4	90.00	-680.4	2,857.3	496.2	330.8	165.39	3.000		
9,900.0	7,053.0	9,993.6	7,053.0	85.0	86.2	90.00	-678.9	2,957.3	496.2	325.3	170.90	2.903		
10,000.0	7,053.0	10,093.6	7,053.0	87.8	88.9	90.00	-677.3	3,057.3	496.1	319.7	176.42	2.812		
10,100.0	7,053.0	10,193.6	7,053.0	90.5	91.7	90.00	-675.8	3,157.3	496.1	314.2	181.94	2.727		
10,200.0	7,053.0	10,293.6	7,053.0	93.3	94.4	90.00	-674.3	3,257.3	496.1	308.7	187.47	2.646		
10,300.0	7,053.0	10,393.6	7,053.0	96.1	97.2	90.00	-672.8	3,357.2	496.1	303.1	193.00	2.571		
10,400.0	7,053.0	10,493.6	7,053.0	98.8	100.0	90.00	-671.3	3,457.2	496.1	297.6	198.54	2.499		
10,500.0	7,053.0	10,593.6	7,053.0	101.6	102.7	90.00	-669.7	3,557.2	496.1	292.0	204.08	2.431		
10,600.0	7,053.0	10,693.6	7,053.0	104.4	105.5	90.00	-668.2	3,657.2	496.1	286.5	209.63	2.367		
10,700.0	7,053.0	10,793.6	7,053.0	107.2	108.3	90.00	-666.7	3,757.2	496.1	280.9	215.18	2.306		
10,800.0	7,053.0	10,893.6	7,053.0	109.9	111.0	90.00	-665.2	3,857.2	496.1	275.4	220.73	2.248		
10,900.0	7,053.0	10,993.6	7,053.0	112.7	113.8	90.00	-663.7	3,957.2	496.1	269.8	226.28	2.192		
11,000.0	7,053.0	11,093.6	7,053.0	115.5	116.6	90.00	-662.2	4,057.2	496.1	264.2	231.84	2.140		
11,100.0	7,053.0	11,193.6	7,053.0	118.3	119.3	90.00	-660.6	4,157.2	496.1	258.7	237.40	2.090		
11,200.0	7,053.0	11,293.6	7,053.0	121.1	122.1	90.00	-659.1	4,257.1	496.1	253.1	242.96	2.042		
11,300.0	7,053.0	11,393.6	7,053.0	123.8	124.9	90.00	-657.6	4,357.1	496.1	247.5	248.52	1.996		
11,400.0	7,053.0	11,493.6	7,053.0	126.6	127.7	90.00	-656.1	4,457.1	496.1	242.0	254.09	1.952		
11,500.0	7,053.0	11,593.6	7,053.0	129.4	130.5	90.00	-654.6	4,557.1	496.1	236.4	259.66	1.910		
11,528.3	7,053.0	11,621.9	7,053.0	130.2	131.2	90.00	-654.1	4,585.4	496.0	234.8	261.24	1.899		
11,583.6	7,053.0	11,632.1	7,053.0	131.7	131.5	90.00	-654.0	4,595.7	498.1	235.0	263.06	1.893 SF		
11,584.3	7,053.0	11,632.1	7,053.0	131.7	131.5	90.00	-654.0	4,595.7	498.1	235.1	263.07	1.894		

SRC Wiedeman Pad Sec.5-T5N-R66W - SRC Wiedeman A-5-3NBHZ - Wellbore #1 - Plan #3 (9-24-14)													Offset Site Error:	0.0 ft
Survey Program: 0-MWD													Offset Well Error:	0.0 ft
Reference		Offset		Semi Major Axis			Distance							
Measured Depth (ft)	Vertical Depth (ft)	Measured Depth (ft)	Vertical Depth (ft)	Reference (ft)	Offset (ft)	Highside Toolface (°)	Offset Wellbore Centre +N/-S (ft)	+E/-W (ft)	Between Centres (ft)	Between Ellipses (ft)	Minimum Separation (ft)	Separation Factor	Warning	
0.0	0.0	0.0	0.0	0.0	0.0	6.38	14.9	1.7	15.0	15.0	0.00	N/A		
100.0	100.0	100.0	100.0	0.1	0.1	6.38	14.9	1.7	15.0	14.8	0.22	66.869		
200.0	200.0	200.0	200.0	0.3	0.3	6.38	14.9	1.7	15.0	14.4	0.67	22.290		
300.0	300.0	300.0	300.0	0.6	0.6	6.38	14.9	1.7	15.0	13.9	1.12	13.374		
400.0	400.0	400.0	400.0	0.8	0.8	6.38	14.9	1.7	15.0	13.5	1.57	9.553		
500.0	500.0	500.0	500.0	1.0	1.0	6.38	14.9	1.7	15.0	13.0	2.02	7.430		
600.0	600.0	600.0	600.0	1.2	1.2	6.38	14.9	1.7	15.0	12.6	2.47	6.079		
700.0	700.0	700.0	700.0	1.5	1.5	6.38	14.9	1.7	15.0	12.1	2.92	5.144		
800.0	800.0	800.0	800.0	1.7	1.7	6.38	14.9	1.7	15.0	11.7	3.37	4.458		
900.0	900.0	900.0	900.0	1.9	1.9	6.38	14.9	1.7	15.0	11.2	3.82	3.933		
1,000.0	1,000.0	1,000.0	1,000.0	2.1	2.1	6.38	14.9	1.7	15.0	10.8	4.27	3.519		
1,100.0	1,100.0	1,100.0	1,100.0	2.4	2.4	6.38	14.9	1.7	15.0	10.3	4.72	3.184		
1,200.0	1,200.0	1,200.0	1,200.0	2.6	2.6	6.38	14.9	1.7	15.0	9.9	5.17	2.907		
1,300.0	1,300.0	1,300.0	1,300.0	2.8	2.8	6.38	14.9	1.7	15.0	9.4	5.62	2.675		
1,400.0	1,400.0	1,400.0	1,400.0	3.0	3.0	6.38	14.9	1.7	15.0	9.0	6.07	2.477 CC, ES		
1,500.0	1,500.0	1,500.0	1,500.0	3.2	3.3	150.35	14.9	1.7	16.5	10.0	6.49	2.545		
1,600.0	1,599.8	1,599.8	1,599.8	3.4	3.5	157.32	14.9	1.7	21.2	14.3	6.89	3.082		
1,700.0	1,699.5	1,699.5	1,699.5	3.6	3.7	163.82	14.9	1.7	29.5	22.2	7.28	4.046		
1,716.3	1,715.7	1,715.7	1,715.7	3.6	3.7	164.71	14.9	1.7	31.2	23.8	7.35	4.241		
1,800.0	1,798.8	1,798.8	1,798.8	3.8	3.9	168.18	14.9	1.7	40.1	32.4	7.69	5.217		
1,900.0	1,898.2	1,898.2	1,898.2	4.0	4.2	170.72	14.9	1.7	51.0	42.9	8.11	6.285		
2,000.0	1,997.6	1,997.6	1,997.6	4.3	4.4	172.37	14.9	1.7	61.9	53.3	8.53	7.253		
2,100.0	2,097.0	2,096.9	2,096.9	4.5	4.6	172.22	15.9	0.3	72.9	63.9	8.95	8.143		
2,200.0	2,196.4	2,196.0	2,195.8	4.8	4.8	169.77	18.8	-3.8	84.2	74.8	9.38	8.979		
2,300.0	2,295.8	2,294.7	2,294.1	5.0	5.0	165.88	23.6	-10.7	96.1	86.3	9.81	9.793		
2,400.0	2,395.2	2,393.6	2,392.5	5.3	5.3	161.87	29.6	-19.2	108.8	98.6	10.27	10.596		
2,500.0	2,494.6	2,492.5	2,490.9	5.6	5.5	158.70	35.5	-27.7	122.0	111.2	10.74	11.359		
2,600.0	2,594.0	2,591.4	2,589.3	5.8	5.7	156.16	41.4	-36.2	135.4	124.2	11.21	12.075		
2,700.0	2,693.4	2,690.3	2,687.7	6.1	6.0	154.07	47.4	-44.6	149.0	137.3	11.69	12.744		
2,800.0	2,792.8	2,789.3	2,786.0	6.4	6.2	152.34	53.3	-53.1	162.8	150.7	12.18	13.366		
2,900.0	2,892.1	2,888.2	2,884.4	6.7	6.5	150.87	59.2	-61.6	176.8	164.1	12.68	13.945		
3,000.0	2,991.5	2,987.1	2,982.8	6.9	6.7	149.62	65.2	-70.1	190.8	177.6	13.17	14.482		
3,100.0	3,090.9	3,086.1	3,081.2	7.2	7.0	148.55	71.1	-78.6	204.9	191.2	13.68	14.982		
3,200.0	3,190.3	3,185.0	3,179.6	7.5	7.3	147.61	77.1	-87.1	219.1	204.9	14.18	15.447		
3,300.0	3,289.7	3,283.9	3,278.0	7.8	7.5	146.78	83.0	-95.5	233.3	218.6	14.69	15.880		
3,400.0	3,389.1	3,382.9	3,376.4	8.1	7.8	146.05	88.9	-104.0	247.5	232.3	15.20	16.283		
3,500.0	3,488.5	3,481.8	3,474.8	8.4	8.1	145.40	94.9	-112.5	261.8	246.1	15.72	16.660		
3,600.0	3,587.9	3,580.7	3,573.2	8.7	8.3	144.82	100.8	-121.0	276.2	259.9	16.23	17.013		
3,700.0	3,687.3	3,679.7	3,671.5	9.0	8.6	144.29	106.7	-129.5	290.5	273.8	16.75	17.343		
3,800.0	3,786.7	3,778.6	3,769.9	9.3	8.9	143.82	112.7	-137.9	304.9	287.6	17.27	17.653		
3,900.0	3,886.1	3,881.8	3,872.7	9.6	9.1	143.51	118.4	-146.0	318.8	301.0	17.77	17.936		
4,000.0	3,985.4	3,987.4	3,978.0	9.9	9.3	143.76	122.0	-151.3	330.9	312.7	18.23	18.153		
4,099.5	4,084.3	4,092.7	4,083.3	10.2	9.5	144.56	123.5	-153.4	341.1	322.4	18.65	18.284		
4,200.0	4,184.4	4,193.8	4,184.4	10.4	9.7	145.53	123.5	-153.4	348.7	329.6	19.08	18.273		
4,300.0	4,284.2	4,293.6	4,284.2	10.6	9.9	146.12	123.5	-153.4	353.5	334.0	19.50	18.129		
4,400.0	4,384.2	4,393.6	4,384.2	10.8	10.1	146.35	123.5	-153.4	355.4	335.5	19.90	17.861		
4,415.8	4,400.0	4,409.4	4,400.0	10.9	10.2	5.66	123.5	-153.4	355.5	335.3	20.15	17.642		
4,500.0	4,484.2	4,493.6	4,484.2	11.0	10.3	5.66	123.5	-153.4	355.5	335.0	20.49	17.352		
4,600.0	4,584.2	4,593.6	4,584.2	11.2	10.6	5.66	123.5	-153.4	355.5	334.6	20.88	17.024		
4,700.0	4,684.2	4,693.6	4,684.2	11.4	10.8	5.66	123.5	-153.4	355.5	334.2	21.28	16.705		
4,800.0	4,784.2	4,793.6	4,784.2	11.5	11.0	5.66	123.5	-153.4	355.5	333.8	21.68	16.398		
4,900.0	4,884.2	4,893.6	4,884.2	11.7	11.2	5.66	123.5	-153.4	355.5	333.4	22.08	16.099		

COMPASS 2003.21 Build 46

SRC Wiedeman Pad Sec.5-T5N-R66W - SRC Wiedeman A-5-3NBHZ - Wellbore #1 - Plan #3 (9-24-14)													Offset Site Error:	0.0 ft
Survey Program: 0-MWD													Offset Well Error:	0.0 ft
Reference		Offset		Semi Major Axis			Distance							
Measured Depth	Vertical Depth	Measured Depth	Vertical Depth	Reference	Offset	Highside Toolface	Offset Wellbore Centre		Between Centres	Between Ellipses	Minimum Separation	Separation Factor	Warning	
(ft)	(ft)	(ft)	(ft)	(ft)	(ft)	(°)	+N/-S (ft)	+E/-W (ft)	(ft)	(ft)	(ft)			
5,000.0	4,984.2	4,993.6	4,984.2	11.9	11.4	5.66	123.5	-153.4	355.5	333.0	22.48	15.811		
5,100.0	5,084.2	5,093.6	5,084.2	12.1	11.6	5.66	123.5	-153.4	355.5	332.6	22.89	15.531		
5,200.0	5,184.2	5,193.6	5,184.2	12.3	11.8	5.66	123.5	-153.4	355.5	332.2	23.29	15.260		
5,300.0	5,284.2	5,293.6	5,284.2	12.4	12.0	5.66	123.5	-153.4	355.5	331.8	23.70	14.998		
5,400.0	5,384.2	5,393.6	5,384.2	12.6	12.3	5.66	123.5	-153.4	355.5	331.4	24.11	14.743		
5,500.0	5,484.2	5,493.6	5,484.2	12.8	12.5	5.66	123.5	-153.4	355.5	330.9	24.52	14.496		
5,600.0	5,584.2	5,593.6	5,584.2	13.0	12.7	5.66	123.5	-153.4	355.5	330.5	24.93	14.257		
5,700.0	5,684.2	5,693.6	5,684.2	13.2	12.9	5.66	123.5	-153.4	355.5	330.1	25.35	14.024		
5,800.0	5,784.2	5,793.6	5,784.2	13.4	13.1	5.66	123.5	-153.4	355.5	329.7	25.76	13.799		
5,900.0	5,884.2	5,893.6	5,884.2	13.6	13.3	5.66	123.5	-153.4	355.5	329.3	26.18	13.580		
6,000.0	5,984.2	5,993.6	5,984.2	13.8	13.5	5.66	123.5	-153.4	355.5	328.9	26.59	13.367		
6,100.0	6,084.2	6,093.6	6,084.2	14.0	13.8	5.66	123.5	-153.4	355.5	328.5	27.01	13.160		
6,200.0	6,184.2	6,193.6	6,184.2	14.2	14.0	5.66	123.5	-153.4	355.5	328.0	27.43	12.959		
6,300.0	6,284.2	6,293.6	6,284.2	14.3	14.2	5.66	123.5	-153.4	355.5	327.6	27.85	12.764		
6,352.6	6,336.8	6,346.2	6,336.8	14.4	14.3	5.66	123.5	-153.4	355.5	327.4	28.07	12.664		
6,400.0	6,384.2	6,393.5	6,384.2	14.5	14.4	-83.74	123.5	-153.4	355.3	327.1	28.21	12.595		
6,450.0	6,433.9	6,443.3	6,433.9	14.6	14.5	-84.59	123.5	-153.4	354.8	326.4	28.41	12.490		
6,500.0	6,483.2	6,492.5	6,483.2	14.7	14.6	-85.99	123.5	-153.4	354.1	325.5	28.60	12.381		
6,550.0	6,531.7	6,540.7	6,531.3	14.7	14.7	-87.83	123.5	-153.0	353.4	324.7	28.78	12.281		
6,600.0	6,579.3	6,588.9	6,579.4	14.8	14.8	-89.73	123.6	-149.7	353.1	324.2	28.94	12.204		
6,612.6	6,591.1	6,601.2	6,591.6	14.8	14.8	-90.22	123.6	-148.4	353.1	324.2	28.97	12.188		
6,650.0	6,625.7	6,637.9	6,627.9	14.8	14.9	-91.65	123.6	-143.1	353.2	324.2	29.08	12.146		
6,700.0	6,670.7	6,687.7	6,676.7	14.8	15.0	-93.57	123.7	-133.0	353.7	324.5	29.22	12.106		
6,750.0	6,714.1	6,738.5	6,725.5	14.9	15.0	-95.49	123.8	-119.2	354.6	325.3	29.35	12.081		
6,800.0	6,755.7	6,790.1	6,774.1	14.9	15.1	-97.39	123.9	-101.7	355.9	326.4	29.49	12.066		
6,850.0	6,795.2	6,842.8	6,822.2	15.0	15.2	-99.26	124.1	-80.3	357.5	327.8	29.65	12.058		
6,900.0	6,832.4	6,896.4	6,869.4	15.0	15.2	-101.09	124.3	-54.9	359.4	329.6	29.83	12.050		
6,950.0	6,867.3	6,951.1	6,915.5	15.1	15.4	-102.87	124.5	-25.4	361.6	331.6	30.06	12.032		
7,000.0	6,899.6	7,006.9	6,960.0	15.3	15.5	-104.58	124.7	8.2	364.1	333.7	30.35	11.995		
7,050.0	6,929.1	7,063.7	7,002.5	15.7	15.7	-106.22	125.0	45.9	366.7	336.0	30.74	11.929		
7,100.0	6,955.7	7,121.7	7,042.7	16.2	16.0	-107.77	125.3	87.6	369.5	338.2	31.24	11.827		
7,150.0	6,979.4	7,180.8	7,080.0	16.7	16.4	-109.23	125.6	133.4	372.3	340.4	31.88	11.677		
7,200.0	6,999.9	7,240.9	7,114.0	17.3	16.9	-110.58	126.0	183.0	375.0	342.3	32.67	11.478		
7,250.0	7,017.1	7,302.1	7,144.2	18.0	17.6	-111.82	126.4	236.2	377.7	344.0	33.64	11.227		
7,300.0	7,031.1	7,364.3	7,170.1	18.8	18.3	-112.94	126.8	292.7	380.2	345.4	34.80	10.923		
7,350.0	7,041.7	7,427.4	7,191.3	19.7	19.2	-113.93	127.3	352.1	382.4	346.3	36.15	10.578		
7,400.0	7,048.8	7,491.3	7,207.4	20.6	20.2	-114.78	127.7	413.9	384.4	346.7	37.68	10.200		
7,450.0	7,052.5	7,555.9	7,217.9	21.5	21.4	-115.48	128.2	477.7	386.0	346.6	39.39	9.799		
7,477.6	7,053.0	7,591.9	7,221.3	22.1	22.0	-115.81	128.5	513.5	386.7	346.3	40.40	9.572		
7,500.0	7,053.0	7,621.2	7,222.7	22.5	22.6	-116.01	128.7	542.7	387.0	345.7	41.25	9.382		
7,600.0	7,053.0	7,725.9	7,223.0	24.6	24.7	-116.10	129.4	647.5	386.4	341.4	45.02	8.583		
7,700.0	7,053.0	7,825.9	7,223.0	26.9	26.9	-116.15	130.2	747.5	385.7	336.7	48.95	7.880		
7,800.0	7,053.0	7,925.9	7,223.0	29.2	29.1	-116.20	130.9	847.4	385.0	331.9	53.06	7.255		
7,900.0	7,053.0	8,025.9	7,223.0	31.6	31.5	-116.26	131.7	947.4	384.3	327.0	57.33	6.703		
8,000.0	7,053.0	8,125.9	7,223.0	34.1	33.9	-116.31	132.4	1,047.4	383.6	321.9	61.71	6.216		
8,100.0	7,053.0	8,225.9	7,223.0	36.6	36.4	-116.36	133.1	1,147.4	382.9	316.7	66.18	5.786		
8,200.0	7,053.0	8,325.9	7,223.0	39.1	38.9	-116.41	133.9	1,247.4	382.2	311.5	70.73	5.404		
8,300.0	7,053.0	8,425.9	7,223.0	41.7	41.5	-116.46	134.6	1,347.4	381.5	306.2	75.33	5.065		
8,400.0	7,053.0	8,525.9	7,223.0	44.3	44.1	-116.51	135.3	1,447.4	380.8	300.8	79.98	4.761		
8,500.0	7,053.0	8,625.9	7,223.0	47.0	46.7	-116.57	136.1	1,547.4	380.1	295.5	84.68	4.489		
8,600.0	7,053.0	8,725.9	7,223.0	49.6	49.3	-116.62	136.8	1,647.4	379.4	290.0	89.40	4.244		
8,700.0	7,053.0	8,825.9	7,223.0	52.3	52.0	-116.67	137.6	1,747.4	378.8	284.6	94.15	4.023		

Company:	Synergy Resources	Local Co-ordinate Reference:	Well SRC Wiedeman 12-5-4CHZ
Project:	Sec.5-T5N-R66W	TVD Reference:	WELL @ 4796.0ft (RKB - 13')
Reference Site:	SRC Wiedeman Pad Sec.5-T5N-R66W	MD Reference:	WELL @ 4796.0ft (RKB - 13')
Site Error:	0.0ft	North Reference:	True
Reference Well:	SRC Wiedeman 12-5-4CHZ	Survey Calculation Method:	Minimum Curvature
Well Error:	0.0ft	Output errors are at	2.00 sigma
Reference Wellbore	Wellbore #1	Database:	Landmark
Reference Design:	Plan #3 (9-24-14)	Offset TVD Reference:	Offset Datum

Offset Design SRC Wiedeman Pad Sec.5-T5N-R66W - SRC Wiedeman A-5-3NBHZ - Wellbore #1 - Plan #3 (9-24-14)													Offset Site Error:	0.0 ft
Survey Program: 0-MWD													Offset Well Error:	0.0 ft
Reference		Offset		Semi Major Axis			Distance						Warning	
Measured Depth (ft)	Vertical Depth (ft)	Measured Depth (ft)	Vertical Depth (ft)	Reference (ft)	Offset (ft)	Highside Toolface (°)	Offset Wellbore Centre +N/-S (ft)	+E/-W (ft)	Between Centres (ft)	Between Ellipses (ft)	Minimum Separation (ft)	Separation Factor		
8,800.0	7,053.0	8,925.9	7,223.0	55.0	54.7	-116.72	138.3	1,847.4	378.1	279.1	98.92	3.822		
8,900.0	7,053.0	9,025.9	7,223.0	57.7	57.3	-116.78	139.0	1,947.4	377.4	273.7	103.71	3.639		
9,000.0	7,053.0	9,125.9	7,223.0	60.4	60.0	-116.83	139.8	2,047.4	376.7	268.2	108.52	3.471		
9,100.0	7,053.0	9,225.9	7,223.0	63.1	62.7	-116.88	140.5	2,147.4	376.0	262.7	113.34	3.317		
9,200.0	7,053.0	9,325.9	7,223.0	65.8	65.5	-116.94	141.2	2,247.4	375.3	257.1	118.17	3.176		
9,300.0	7,053.0	9,425.8	7,223.0	68.5	68.2	-116.99	142.0	2,347.4	374.6	251.6	123.01	3.045		
9,400.0	7,053.0	9,525.8	7,223.0	71.3	70.9	-117.04	142.7	2,447.4	373.9	246.1	127.85	2.925		
9,500.0	7,053.0	9,625.8	7,223.0	74.0	73.6	-117.10	143.5	2,547.4	373.2	240.5	132.70	2.813		
9,600.0	7,053.0	9,725.8	7,223.0	76.8	76.4	-117.15	144.2	2,647.3	372.5	235.0	137.56	2.708		
9,700.0	7,053.0	9,825.8	7,223.0	79.5	79.1	-117.21	144.9	2,747.3	371.9	229.4	142.42	2.611		
9,800.0	7,053.0	9,925.8	7,223.0	82.3	81.9	-117.26	145.7	2,847.3	371.2	223.9	147.28	2.520		
9,900.0	7,053.0	10,025.8	7,223.0	85.0	84.6	-117.31	146.4	2,947.3	370.5	218.3	152.15	2.435		
10,000.0	7,053.0	10,125.8	7,223.0	87.8	87.4	-117.37	147.1	3,047.3	369.8	212.8	157.01	2.355		
10,100.0	7,053.0	10,225.8	7,223.0	90.5	90.1	-117.42	147.9	3,147.3	369.1	207.2	161.88	2.280		
10,200.0	7,053.0	10,325.8	7,223.0	93.3	92.9	-117.48	148.6	3,247.3	368.4	201.7	166.74	2.210		
10,300.0	7,053.0	10,425.8	7,223.0	96.1	95.7	-117.54	149.4	3,347.3	367.7	196.1	171.61	2.143		
10,400.0	7,053.0	10,525.8	7,223.0	98.8	98.4	-117.59	150.1	3,447.3	367.0	190.6	176.47	2.080		
10,500.0	7,053.0	10,625.8	7,223.0	101.6	101.2	-117.65	150.8	3,547.3	366.4	185.0	181.34	2.020		
10,600.0	7,053.0	10,725.8	7,223.0	104.4	104.0	-117.70	151.6	3,647.3	365.7	179.5	186.20	1.964		
10,700.0	7,053.0	10,825.8	7,223.0	107.2	106.7	-117.76	152.3	3,747.3	365.0	173.9	191.06	1.910		
10,800.0	7,053.0	10,925.8	7,223.0	109.9	109.5	-117.82	153.0	3,847.3	364.3	168.4	195.92	1.859		
10,900.0	7,053.0	11,025.8	7,223.0	112.7	112.3	-117.87	153.8	3,947.3	363.6	162.8	200.77	1.811		
11,000.0	7,053.0	11,125.8	7,223.0	115.5	115.1	-117.93	154.5	4,047.3	362.9	157.3	205.62	1.765		
11,100.0	7,053.0	11,225.8	7,223.0	118.3	117.8	-117.99	155.3	4,147.3	362.3	151.8	210.47	1.721		
11,200.0	7,053.0	11,325.8	7,223.0	121.1	120.6	-118.05	156.0	4,247.3	361.6	146.2	215.32	1.679		
11,300.0	7,053.0	11,425.8	7,223.0	123.8	123.4	-118.10	156.7	4,347.2	360.9	140.7	220.16	1.639		
11,400.0	7,053.0	11,525.8	7,223.0	126.6	126.2	-118.16	157.5	4,447.2	360.2	135.2	225.00	1.601		
11,500.0	7,053.0	11,625.8	7,223.0	129.4	129.0	-118.22	158.2	4,547.2	359.5	129.7	229.84	1.564		
11,583.6	7,053.0	11,709.4	7,223.0	131.7	131.3	-118.27	158.8	4,630.9	359.0	125.1	233.88	1.535		
11,584.3	7,053.0	11,710.0	7,223.0	131.7	131.3	-118.27	158.8	4,631.5	358.9	125.0	233.91	1.535 SF		

Company:	Synergy Resources	Local Co-ordinate Reference:	Well SRC Wiedeman 12-5-4CHZ
Project:	Sec.5-T5N-R66W	TVD Reference:	WELL @ 4796.0ft (RKB - 13')
Reference Site:	SRC Wiedeman Pad Sec.5-T5N-R66W	MD Reference:	WELL @ 4796.0ft (RKB - 13')
Site Error:	0.0ft	North Reference:	True
Reference Well:	SRC Wiedeman 12-5-4CHZ	Survey Calculation Method:	Minimum Curvature
Well Error:	0.0ft	Output errors are at	2.00 sigma
Reference Wellbore	Wellbore #1	Database:	Landmark
Reference Design:	Plan #3 (9-24-14)	Offset TVD Reference:	Offset Datum

Reference Depths are relative to WELL @ 4796.0ft (RKB - 13')

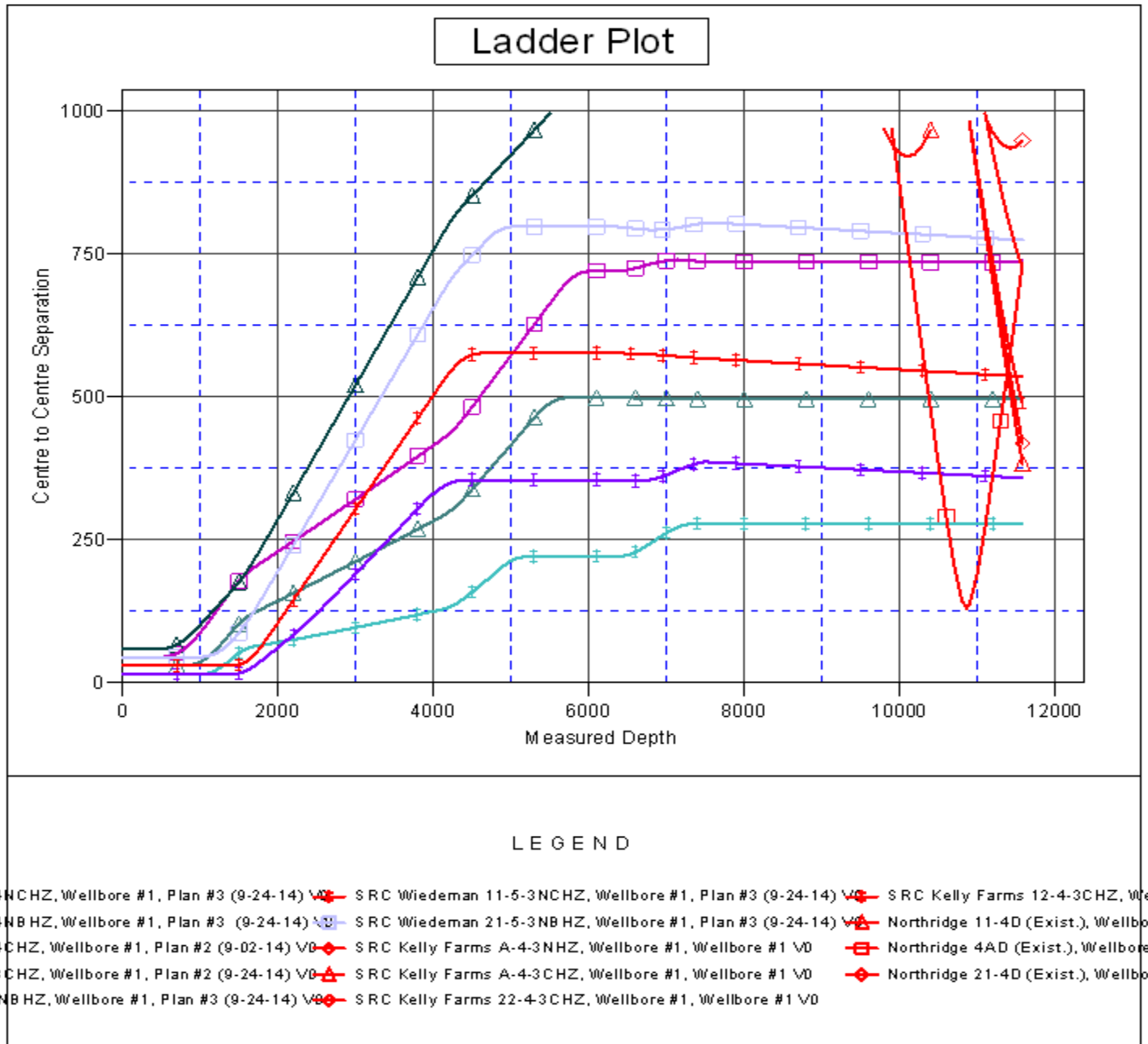
Offset Depths are relative to Offset Datum

Central Meridian is -105.500000 °

Coordinates are relative to: SRC Wiedeman 12-5-4CHZ

Coordinate System is US State Plane 1983, Colorado Northern Zone

Grid Convergence at Surface is: 0.45°



Company:	Synergy Resources	Local Co-ordinate Reference:	Well SRC Wiedeman 12-5-4CHZ
Project:	Sec.5-T5N-R66W	TVD Reference:	WELL @ 4796.0ft (RKB - 13')
Reference Site:	SRC Wiedeman Pad Sec.5-T5N-R66W	MD Reference:	WELL @ 4796.0ft (RKB - 13')
Site Error:	0.0ft	North Reference:	True
Reference Well:	SRC Wiedeman 12-5-4CHZ	Survey Calculation Method:	Minimum Curvature
Well Error:	0.0ft	Output errors are at	2.00 sigma
Reference Wellbore	Wellbore #1	Database:	Landmark
Reference Design:	Plan #3 (9-24-14)	Offset TVD Reference:	Offset Datum

Reference Depths are relative to WELL @ 4796.0ft (RKB - 13')
 Offset Depths are relative to Offset Datum
 Central Meridian is -105.500000 °

Coordinates are relative to: SRC Wiedeman 12-5-4CHZ
 Coordinate System is US State Plane 1983, Colorado Northern Zone
 Grid Convergence at Surface is: 0.45°

