

Synergy Resources

Well Name: **SRC Wiedeman 12-5-4NCHZ**

Surface Location: SRC Wiedeman Pad Sec.5-T5N-R66W
North American Datum 1983 , US State Plane 1983 , Colorado Northern Zone

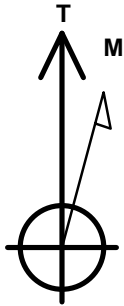
Ground Elevation: 4783.0

+N/-S	+E/-W	Northing	Easting	Latitude	Longitude	Slot
0.0	0.0	1401417.48	3194377.92	40.433192	-104.801731	

RKB - 13' WELL @ 4796.0ft (RKB - 13')

WELLBORE TARGET DETAILS

Name	TVD	+N/-S	+E/-W	Shape
SHL 1452'FNL & 2438'FEL, Sec.5		0.0	0.0	Point
BHL 1884'FNL & 2192'FWL, Sec.4	7223.0	-362.8	4616.0	Point



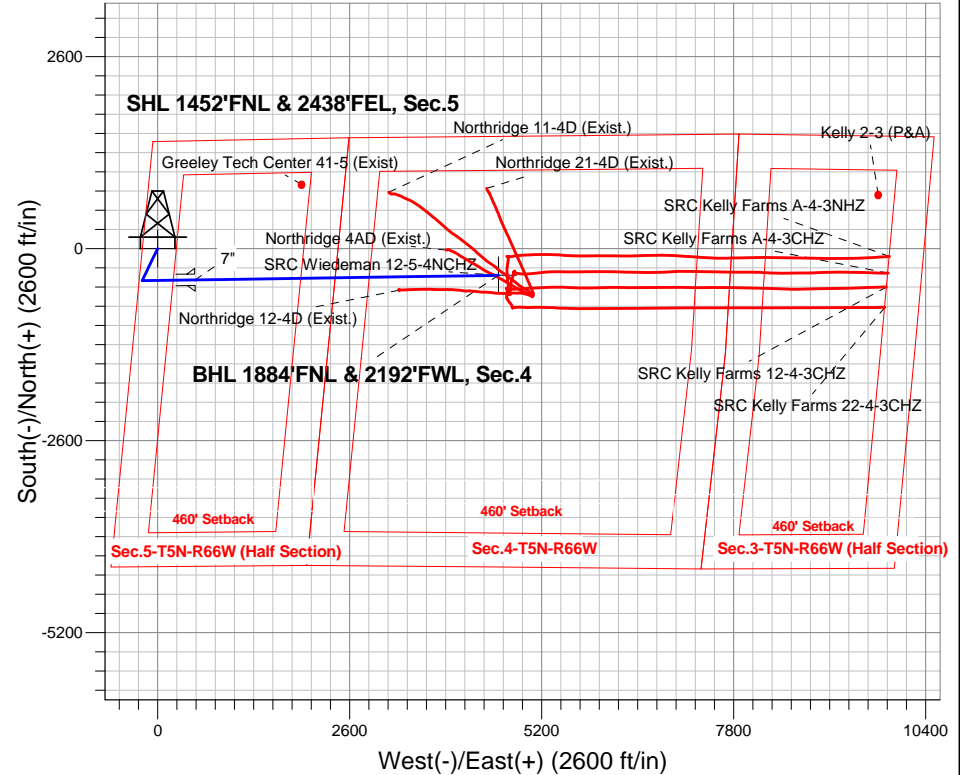
Azimuths to True North
Magnetic North: 8.45°

Magnetic Field
Strength: 52799.9snT
Dip Angle: 66.96°
Date: 9/24/2014
Model: IGRF2010

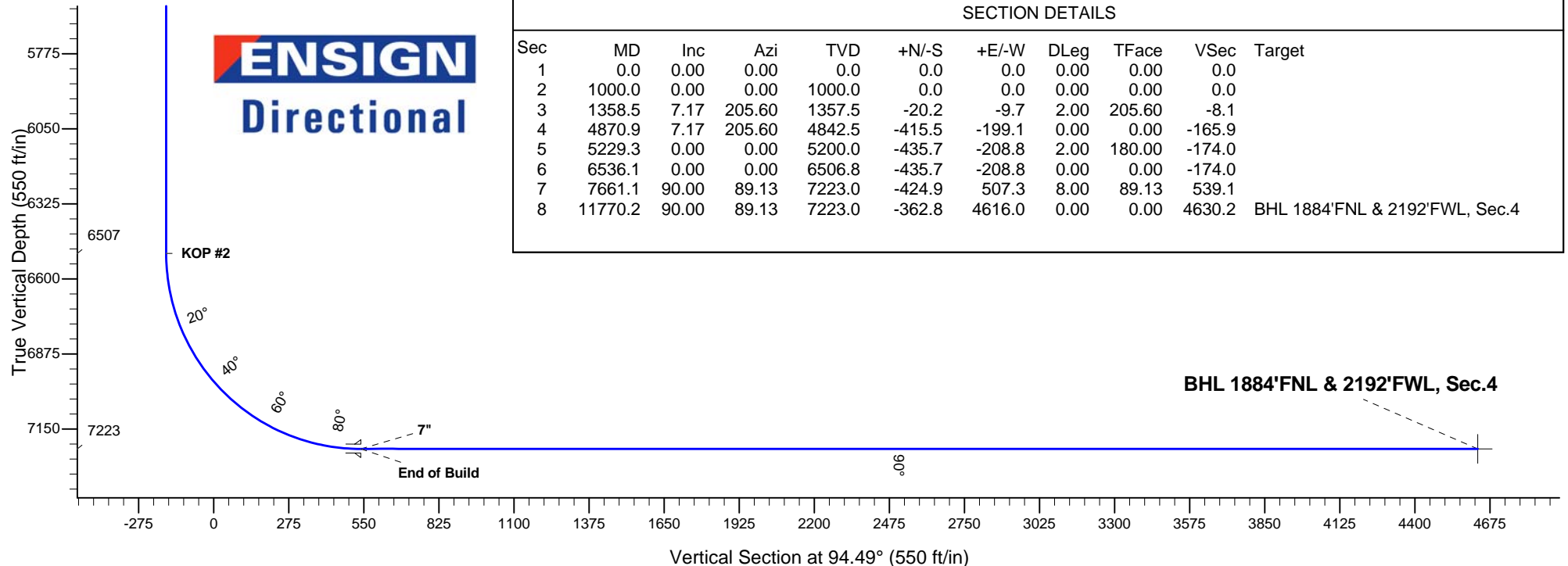
SRC Wiedeman Pad Sec.5-T5N-R66W
SRC Wiedeman 12-5-4NCHZ
Plan #3 (9-24-14)
11:18, September 24 2014

ANNOTATIONS

TVD	MD	Annotation
1000.0	1000.0	KOP #1
6506.8	6536.1	KOP #2
7223.0	7661.1	End of Build



ENSIGN
Directional



SECTION DETAILS

Sec	MD	Inc	Azi	TVD	+N/-S	+E/-W	DLeg	TFace	VSec	Target
1	0.0	0.00	0.00	0.0	0.0	0.0	0.00	0.00	0.0	
2	1000.0	0.00	0.00	1000.0	0.0	0.0	0.00	0.00	0.0	
3	1358.5	7.17	205.60	1357.5	-20.2	-9.7	2.00	205.60	-8.1	
4	4870.9	7.17	205.60	4842.5	-415.5	-199.1	0.00	0.00	-165.9	
5	5229.3	0.00	0.00	5200.0	-435.7	-208.8	2.00	180.00	-174.0	
6	6536.1	0.00	0.00	6506.8	-435.7	-208.8	0.00	0.00	-174.0	
7	7661.1	90.00	89.13	7223.0	-424.9	507.3	8.00	89.13	539.1	
8	11770.2	90.00	89.13	7223.0	-362.8	4616.0	0.00	0.00	4630.2	BHL 1884'FNL & 2192'FWL, Sec.4



Synergy Resources

Sec.5-T5N-R66W

SRC Wiedeman Pad Sec.5-T5N-R66W

SRC Wiedeman 12-5-4NCHZ

Wellbore #1

Plan: Plan #3 (9-24-14)

Standard Planning Report

24 September, 2014

Plan Sections										
Measured Depth (ft)	Inclination (°)	Azimuth (°)	Vertical Depth (ft)	+N/-S (ft)	+E/-W (ft)	Dogleg Rate (°/100ft)	Build Rate (°/100ft)	Turn Rate (°/100ft)	TFO (°)	Target
0.0	0.00	0.00	0.0	0.0	0.0	0.00	0.00	0.00	0.00	
1,000.0	0.00	0.00	1,000.0	0.0	0.0	0.00	0.00	0.00	0.00	
1,358.5	7.17	205.60	1,357.5	-20.2	-9.7	2.00	2.00	0.00	205.60	
4,870.9	7.17	205.60	4,842.5	-415.5	-199.1	0.00	0.00	0.00	0.00	
5,229.3	0.00	0.00	5,200.0	-435.7	-208.8	2.00	-2.00	0.00	180.00	
6,536.1	0.00	0.00	6,506.8	-435.7	-208.8	0.00	0.00	0.00	0.00	
7,661.1	90.00	89.13	7,223.0	-424.9	507.3	8.00	8.00	0.00	89.13	
11,770.2	90.00	89.13	7,223.0	-362.8	4,616.0	0.00	0.00	0.00	0.00	BHL 1884'FNL & 21

Database:	Landmark	Local Co-ordinate Reference:	Well SRC Wiedeman 12-5-4NCHZ
Company:	Synergy Resources	TVD Reference:	WELL @ 4796.0ft (RKB - 13')
Project:	Sec.5-T5N-R66W	MD Reference:	WELL @ 4796.0ft (RKB - 13')
Site:	SRC Wiedeman Pad Sec.5-T5N-R66W	North Reference:	True
Well:	SRC Wiedeman 12-5-4NCHZ	Survey Calculation Method:	Minimum Curvature
Wellbore:	Wellbore #1		
Design:	Plan #3 (9-24-14)		

Planned Survey									
Measured Depth (ft)	Inclination (°)	Azimuth (°)	Vertical Depth (ft)	+N/-S (ft)	+E/-W (ft)	Vertical Section (ft)	Dogleg Rate (°/100ft)	Build Rate (°/100ft)	Turn Rate (°/100ft)
0.0	0.00	0.00	0.0	0.0	0.0	0.0	0.00	0.00	0.00
1.0	0.00	0.00	1.0	0.0	0.0	0.0	0.00	0.00	0.00
SHL 1452'FNL & 2438'FEL, Sec.5									
100.0	0.00	0.00	100.0	0.0	0.0	0.0	0.00	0.00	0.00
200.0	0.00	0.00	200.0	0.0	0.0	0.0	0.00	0.00	0.00
300.0	0.00	0.00	300.0	0.0	0.0	0.0	0.00	0.00	0.00
400.0	0.00	0.00	400.0	0.0	0.0	0.0	0.00	0.00	0.00
500.0	0.00	0.00	500.0	0.0	0.0	0.0	0.00	0.00	0.00
600.0	0.00	0.00	600.0	0.0	0.0	0.0	0.00	0.00	0.00
700.0	0.00	0.00	700.0	0.0	0.0	0.0	0.00	0.00	0.00
800.0	0.00	0.00	800.0	0.0	0.0	0.0	0.00	0.00	0.00
900.0	0.00	0.00	900.0	0.0	0.0	0.0	0.00	0.00	0.00
1,000.0	0.00	0.00	1,000.0	0.0	0.0	0.0	0.00	0.00	0.00
KOP #1									
1,100.0	2.00	205.60	1,100.0	-1.6	-0.8	-0.6	2.00	2.00	0.00
1,200.0	4.00	205.60	1,199.8	-6.3	-3.0	-2.5	2.00	2.00	0.00
1,300.0	6.00	205.60	1,299.5	-14.2	-6.8	-5.7	2.00	2.00	0.00
1,358.5	7.17	205.60	1,357.5	-20.2	-9.7	-8.1	2.00	2.00	0.00
1,400.0	7.17	205.60	1,398.7	-24.9	-11.9	-9.9	0.00	0.00	0.00
1,500.0	7.17	205.60	1,498.0	-36.1	-17.3	-14.4	0.00	0.00	0.00
1,600.0	7.17	205.60	1,597.2	-47.4	-22.7	-18.9	0.00	0.00	0.00
1,700.0	7.17	205.60	1,696.4	-58.6	-28.1	-23.4	0.00	0.00	0.00
1,800.0	7.17	205.60	1,795.6	-69.9	-33.5	-27.9	0.00	0.00	0.00
1,900.0	7.17	205.60	1,894.8	-81.2	-38.9	-32.4	0.00	0.00	0.00
2,000.0	7.17	205.60	1,994.0	-92.4	-44.3	-36.9	0.00	0.00	0.00
2,100.0	7.17	205.60	2,093.3	-103.7	-49.7	-41.4	0.00	0.00	0.00
2,200.0	7.17	205.60	2,192.5	-114.9	-55.1	-45.9	0.00	0.00	0.00
2,300.0	7.17	205.60	2,291.7	-126.2	-60.5	-50.4	0.00	0.00	0.00
2,400.0	7.17	205.60	2,390.9	-137.4	-65.9	-54.9	0.00	0.00	0.00
2,500.0	7.17	205.60	2,490.1	-148.7	-71.2	-59.4	0.00	0.00	0.00
2,600.0	7.17	205.60	2,589.4	-159.9	-76.6	-63.9	0.00	0.00	0.00
2,700.0	7.17	205.60	2,688.6	-171.2	-82.0	-68.4	0.00	0.00	0.00
2,800.0	7.17	205.60	2,787.8	-182.4	-87.4	-72.9	0.00	0.00	0.00
2,900.0	7.17	205.60	2,887.0	-193.7	-92.8	-77.4	0.00	0.00	0.00
3,000.0	7.17	205.60	2,986.2	-205.0	-98.2	-81.8	0.00	0.00	0.00
3,100.0	7.17	205.60	3,085.4	-216.2	-103.6	-86.3	0.00	0.00	0.00
3,200.0	7.17	205.60	3,184.7	-227.5	-109.0	-90.8	0.00	0.00	0.00
3,300.0	7.17	205.60	3,283.9	-238.7	-114.4	-95.3	0.00	0.00	0.00
3,400.0	7.17	205.60	3,383.1	-250.0	-119.8	-99.8	0.00	0.00	0.00
3,500.0	7.17	205.60	3,482.3	-261.2	-125.2	-104.3	0.00	0.00	0.00
3,600.0	7.17	205.60	3,581.5	-272.5	-130.6	-108.8	0.00	0.00	0.00
3,700.0	7.17	205.60	3,680.8	-283.7	-136.0	-113.3	0.00	0.00	0.00
3,800.0	7.17	205.60	3,780.0	-295.0	-141.4	-117.8	0.00	0.00	0.00
3,900.0	7.17	205.60	3,879.2	-306.3	-146.7	-122.3	0.00	0.00	0.00
4,000.0	7.17	205.60	3,978.4	-317.5	-152.1	-126.8	0.00	0.00	0.00
4,100.0	7.17	205.60	4,077.6	-328.8	-157.5	-131.3	0.00	0.00	0.00
4,200.0	7.17	205.60	4,176.8	-340.0	-162.9	-135.8	0.00	0.00	0.00
4,300.0	7.17	205.60	4,276.1	-351.3	-168.3	-140.3	0.00	0.00	0.00
4,400.0	7.17	205.60	4,375.3	-362.5	-173.7	-144.8	0.00	0.00	0.00
4,500.0	7.17	205.60	4,474.5	-373.8	-179.1	-149.3	0.00	0.00	0.00
4,600.0	7.17	205.60	4,573.7	-385.0	-184.5	-153.8	0.00	0.00	0.00
4,700.0	7.17	205.60	4,672.9	-396.3	-189.9	-158.3	0.00	0.00	0.00
4,800.0	7.17	205.60	4,772.2	-407.6	-195.3	-162.8	0.00	0.00	0.00
4,870.9	7.17	205.60	4,842.5	-415.5	-199.1	-165.9	0.00	0.00	0.00

Database:	Landmark	Local Co-ordinate Reference:	Well SRC Wiedeman 12-5-4NCHZ
Company:	Synergy Resources	TVD Reference:	WELL @ 4796.0ft (RKB - 13')
Project:	Sec.5-T5N-R66W	MD Reference:	WELL @ 4796.0ft (RKB - 13')
Site:	SRC Wiedeman Pad Sec.5-T5N-R66W	North Reference:	True
Well:	SRC Wiedeman 12-5-4NCHZ	Survey Calculation Method:	Minimum Curvature
Wellbore:	Wellbore #1		
Design:	Plan #3 (9-24-14)		

Planned Survey									
Measured Depth (ft)	Inclination (°)	Azimuth (°)	Vertical Depth (ft)	+N/-S (ft)	+E/-W (ft)	Vertical Section (ft)	Dogleg Rate (°/100ft)	Build Rate (°/100ft)	Turn Rate (°/100ft)
4,900.0	6.59	205.60	4,871.4	-418.7	-200.6	-167.2	2.00	-2.00	0.00
5,000.0	4.59	205.60	4,970.9	-427.5	-204.8	-170.7	2.00	-2.00	0.00
5,100.0	2.59	205.60	5,070.7	-433.1	-207.5	-173.0	2.00	-2.00	0.00
5,200.0	0.59	205.60	5,170.7	-435.6	-208.7	-174.0	2.00	-2.00	0.00
5,229.3	0.00	0.00	5,200.0	-435.7	-208.8	-174.0	2.00	-2.00	0.00
5,300.0	0.00	0.00	5,270.7	-435.7	-208.8	-174.0	0.00	0.00	0.00
5,400.0	0.00	0.00	5,370.7	-435.7	-208.8	-174.0	0.00	0.00	0.00
5,500.0	0.00	0.00	5,470.7	-435.7	-208.8	-174.0	0.00	0.00	0.00
5,600.0	0.00	0.00	5,570.7	-435.7	-208.8	-174.0	0.00	0.00	0.00
5,700.0	0.00	0.00	5,670.7	-435.7	-208.8	-174.0	0.00	0.00	0.00
5,800.0	0.00	0.00	5,770.7	-435.7	-208.8	-174.0	0.00	0.00	0.00
5,900.0	0.00	0.00	5,870.7	-435.7	-208.8	-174.0	0.00	0.00	0.00
6,000.0	0.00	0.00	5,970.7	-435.7	-208.8	-174.0	0.00	0.00	0.00
6,100.0	0.00	0.00	6,070.7	-435.7	-208.8	-174.0	0.00	0.00	0.00
6,200.0	0.00	0.00	6,170.7	-435.7	-208.8	-174.0	0.00	0.00	0.00
6,300.0	0.00	0.00	6,270.7	-435.7	-208.8	-174.0	0.00	0.00	0.00
6,400.0	0.00	0.00	6,370.7	-435.7	-208.8	-174.0	0.00	0.00	0.00
6,500.0	0.00	0.00	6,470.7	-435.7	-208.8	-174.0	0.00	0.00	0.00
6,536.1	0.00	0.00	6,506.8	-435.7	-208.8	-174.0	0.00	0.00	0.00
KOP #2									
6,600.0	5.11	89.13	6,570.6	-435.7	-205.9	-171.2	8.00	8.00	0.00
6,700.0	13.11	89.13	6,669.2	-435.4	-190.1	-155.4	8.00	8.00	0.00
6,800.0	21.11	89.13	6,764.7	-435.0	-160.7	-126.2	8.00	8.00	0.00
6,900.0	29.11	89.13	6,855.2	-434.4	-118.3	-83.9	8.00	8.00	0.00
7,000.0	37.11	89.13	6,938.9	-433.5	-63.8	-29.6	8.00	8.00	0.00
7,100.0	45.11	89.13	7,014.2	-432.5	1.9	35.8	8.00	8.00	0.00
7,200.0	53.11	89.13	7,079.6	-431.4	77.4	111.0	8.00	8.00	0.00
7,300.0	61.11	89.13	7,133.9	-430.1	161.3	194.5	8.00	8.00	0.00
7,400.0	69.11	89.13	7,175.9	-428.8	252.0	284.8	8.00	8.00	0.00
7,500.0	77.11	89.13	7,204.9	-427.3	347.6	380.0	8.00	8.00	0.00
7,600.0	85.11	89.13	7,220.4	-425.8	446.3	478.3	8.00	8.00	0.00
7,661.1	90.00	89.13	7,223.0	-424.9	507.3	539.0	8.00	8.00	0.00
End of Build - 7"									
7,700.0	90.00	89.13	7,223.0	-424.3	546.2	577.8	0.01	0.01	0.00
7,800.0	90.00	89.13	7,223.0	-422.8	646.2	677.3	0.00	0.00	0.00
7,900.0	90.00	89.13	7,223.0	-421.3	746.2	776.9	0.00	0.00	0.00
8,000.0	90.00	89.13	7,223.0	-419.8	846.2	876.4	0.00	0.00	0.00
8,100.0	90.00	89.13	7,223.0	-418.3	946.1	976.0	0.00	0.00	0.00
8,200.0	90.00	89.13	7,223.0	-416.8	1,046.1	1,075.6	0.00	0.00	0.00
8,300.0	90.00	89.13	7,223.0	-415.2	1,146.1	1,175.1	0.00	0.00	0.00
8,400.0	90.00	89.13	7,223.0	-413.7	1,246.1	1,274.7	0.00	0.00	0.00
8,500.0	90.00	89.13	7,223.0	-412.2	1,346.1	1,374.3	0.00	0.00	0.00
8,600.0	90.00	89.13	7,223.0	-410.7	1,446.1	1,473.8	0.00	0.00	0.00
8,700.0	90.00	89.13	7,223.0	-409.2	1,546.1	1,573.4	0.00	0.00	0.00
8,800.0	90.00	89.13	7,223.0	-407.7	1,646.1	1,672.9	0.00	0.00	0.00
8,900.0	90.00	89.13	7,223.0	-406.2	1,746.1	1,772.5	0.00	0.00	0.00
9,000.0	90.00	89.13	7,223.0	-404.7	1,846.0	1,872.1	0.00	0.00	0.00
9,100.0	90.00	89.13	7,223.0	-403.1	1,946.0	1,971.6	0.00	0.00	0.00
9,200.0	90.00	89.13	7,223.0	-401.6	2,046.0	2,071.2	0.00	0.00	0.00
9,300.0	90.00	89.13	7,223.0	-400.1	2,146.0	2,170.8	0.00	0.00	0.00
9,400.0	90.00	89.13	7,223.0	-398.6	2,246.0	2,270.3	0.00	0.00	0.00
9,500.0	90.00	89.13	7,223.0	-397.1	2,346.0	2,369.9	0.00	0.00	0.00
9,600.0	90.00	89.13	7,223.0	-395.6	2,446.0	2,469.4	0.00	0.00	0.00
9,700.0	90.00	89.13	7,223.0	-394.1	2,546.0	2,569.0	0.00	0.00	0.00

Planned Survey										
Measured Depth (ft)	Inclination (°)	Azimuth (°)	Vertical Depth (ft)	+N-S (ft)	+E/-W (ft)	Vertical Section (ft)	Dogleg Rate (°/100ft)	Build Rate (°/100ft)	Turn Rate (°/100ft)	
9,800.0	90.00	89.13	7,223.0	-392.6	2,645.9	2,668.6	0.00	0.00	0.00	
9,900.0	90.00	89.13	7,223.0	-391.1	2,745.9	2,768.1	0.00	0.00	0.00	
10,000.0	90.00	89.13	7,223.0	-389.5	2,845.9	2,867.7	0.00	0.00	0.00	
10,100.0	90.00	89.13	7,223.0	-388.0	2,945.9	2,967.3	0.00	0.00	0.00	
10,200.0	90.00	89.13	7,223.0	-386.5	3,045.9	3,066.8	0.00	0.00	0.00	
10,300.0	90.00	89.13	7,223.0	-385.0	3,145.9	3,166.4	0.00	0.00	0.00	
10,400.0	90.00	89.13	7,223.0	-383.5	3,245.9	3,265.9	0.00	0.00	0.00	
10,500.0	90.00	89.13	7,223.0	-382.0	3,345.9	3,365.5	0.00	0.00	0.00	
10,600.0	90.00	89.13	7,223.0	-380.5	3,445.9	3,465.1	0.00	0.00	0.00	
10,700.0	90.00	89.13	7,223.0	-379.0	3,545.8	3,564.6	0.00	0.00	0.00	
10,800.0	90.00	89.13	7,223.0	-377.4	3,645.8	3,664.2	0.00	0.00	0.00	
10,900.0	90.00	89.13	7,223.0	-375.9	3,745.8	3,763.8	0.00	0.00	0.00	
11,000.0	90.00	89.13	7,223.0	-374.4	3,845.8	3,863.3	0.00	0.00	0.00	
11,100.0	90.00	89.13	7,223.0	-372.9	3,945.8	3,962.9	0.00	0.00	0.00	
11,200.0	90.00	89.13	7,223.0	-371.4	4,045.8	4,062.5	0.00	0.00	0.00	
11,300.0	90.00	89.13	7,223.0	-369.9	4,145.8	4,162.0	0.00	0.00	0.00	
11,400.0	90.00	89.13	7,223.0	-368.4	4,245.8	4,261.6	0.00	0.00	0.00	
11,500.0	90.00	89.13	7,223.0	-366.9	4,345.8	4,361.1	0.00	0.00	0.00	
11,600.0	90.00	89.13	7,223.0	-365.4	4,445.7	4,460.7	0.00	0.00	0.00	
11,700.0	90.00	89.13	7,223.0	-363.8	4,545.7	4,560.3	0.00	0.00	0.00	
11,770.2	90.00	89.13	7,223.0	-362.8	4,616.0	4,630.2	0.00	0.00	0.00	
BHL 1884'FNL & 2192'FWL, Sec.4										

Targets										
Target Name - hit/miss target - Shape	Dip Angle (°)	Dip Dir. (°)	TVD (ft)	+N/-S (ft)	+E/-W (ft)	Northing (ft)	Easting (ft)	Latitude	Longitude	
SHL 1452'FNL & 2436' - plan hits target center - Point	0.00	0.00	1.0	0.0	0.0	1,401,417.50	3,194,377.92	40.433192	-104.801731	
BHL 1884'FNL & 2192' - plan hits target center - Point	0.00	0.00	7,223.0	-362.8	4,616.0	1,401,091.08	3,198,996.42	40.432195	-104.785150	

Casing Points					
	Measured Depth (ft)	Vertical Depth (ft)		Name	
				Casing Diameter (")	Hole Diameter (")
	7,661.1	7,223.0	7"	7	7-1/2

Plan Annotations					
	Measured Depth (ft)	Vertical Depth (ft)	Local Coordinates		Comment
			+N/-S	+E/-W	
			(ft)	(ft)	
	1,000.0	1,000.0	0.0	0.0	KOP #1
	6,536.1	6,506.8	-435.7	-208.8	KOP #2
	7,661.1	7,223.0	-424.9	507.3	End of Build



Synergy Resources

Sec.5-T5N-R66W

SRC Wiedeman Pad Sec.5-T5N-R66W

SRC Wiedeman 12-5-4NCHZ

Wellbore #1

Plan #3 (9-24-14)

Anticollision Report

24 September, 2014

Company:	Synergy Resources	Local Co-ordinate Reference:	Well SRC Wiedeman 12-5-4NCHZ
Project:	Sec.5-T5N-R66W	TVD Reference:	WELL @ 4796.0ft (RKB - 13')
Reference Site:	SRC Wiedeman Pad Sec.5-T5N-R66W	MD Reference:	WELL @ 4796.0ft (RKB - 13')
Site Error:	0.0ft	North Reference:	True
Reference Well:	SRC Wiedeman 12-5-4NCHZ	Survey Calculation Method:	Minimum Curvature
Well Error:	0.0ft	Output errors are at	2.00 sigma
Reference Wellbore	Wellbore #1	Database:	Landmark
Reference Design:	Plan #3 (9-24-14)	Offset TVD Reference:	Offset Datum

Reference	Plan #3 (9-24-14)		
Filter type:	NO GLOBAL FILTER: Using user defined selection & filtering criteria		
Interpolation Method:	Stations	Error Model:	ISCWSA
Depth Range:	Unlimited	Scan Method:	Closest Approach 3D
Results Limited by:	Maximum center-center distance of 1,000.0ft	Error Surface:	Elliptical Conic
Warning Levels Evaluated at:	2.00 Sigma		

Survey Tool Program	Date 9/24/2014			
From (ft)	To (ft)	Survey (Wellbore)	Tool Name	Description
0.0	11,769.5	Plan #3 (9-24-14) (Wellbore #1)	MWD	MWD - Standard

Summary						
Site Name	Reference Measured Depth (ft)	Offset Measured Depth (ft)	Distance Between Centres (ft)	Distance Between Ellipses (ft)	Separation Factor	Warning
Offset Well - Wellbore - Design						
Existing Wells - Sec.4-T5N-R66W						
Greeley Tech Center 41-5 (Exist) - Wellbore #1 - Wellbor						Out of range
Kelly 2-3 (P&A) - Wellbore #1 - Wellbore #1						Out of range
Northridge Pad Sec.4-T5N-R66W						
Northridge 11-4D (Exist.) - Wellbore #1 - Wellbore #1						Out of range
Northridge 12-4D (Exist.) - Wellbore #1 - Wellbore #1	10,419.1	7,487.8	176.6	44.7	1.339	Level 3, CC, ES, SF
Northridge 21-4D (Exist.) - Wellbore #1 - Wellbore #1						Out of range
Northridge 22-4D (Exist.) - Wellbore #1 - Wellbore #1	11,609.7	7,237.0	394.9	249.3	2.712	CC, ES, SF
Northridge 4AD (Exist.) - Wellbore #1 - Wellbore #1	11,066.4	7,366.2	352.4	213.8	2.542	CC, ES
Northridge 4AD (Exist.) - Wellbore #1 - Wellbore #1	11,100.0	7,365.8	354.0	214.5	2.537	SF
Northridge 4KD (Exist.) - Wellbore #1 - Wellbore #1	10,859.3	7,411.1	991.2	845.4	6.796	CC
Northridge 4KD (Exist.) - Wellbore #1 - Wellbore #1	10,900.0	7,411.3	992.0	845.1	6.749	ES, SF
SRC Kelly Farms Pad Sec.4-T5N-R66W						
SRC Kelly Farms 12-4-3CHZ - Wellbore #1 - Wellbore #1	11,770.2	6,987.6	430.7	336.2	4.558	CC, ES, SF
SRC Kelly Farms 22-4-3CHZ - Wellbore #1 - Wellbore #1	11,770.2	6,972.0	609.3	481.4	4.764	CC, ES, SF
SRC Kelly Farms A-4-3CHZ - Wellbore #1 - Wellbore #1	11,770.2	6,975.0	435.7	392.4	10.064	CC, ES, SF
SRC Kelly Farms A-4-3NHZ - Wellbore #1 - Wellbore #1	11,770.2	6,883.0	614.0	525.6	6.941	CC, ES, SF
SRC Wiedeman Pad Sec.5-T5N-R66W						
SRC Wiedeman 11-5-3NCHZ - Wellbore #1 - Plan #3 (9-	1,000.0	1,000.0	45.0	40.8	10.545	CC, ES
SRC Wiedeman 11-5-3NCHZ - Wellbore #1 - Plan #3 (9-	11,770.2	11,506.8	775.3	520.1	3.038	SF
SRC Wiedeman 12-5-4CHZ - Wellbore #1 - Plan #3 (9-2	1,000.0	1,000.0	15.0	10.7	3.513	CC, ES
SRC Wiedeman 12-5-4CHZ - Wellbore #1 - Plan #3 (9-2	11,770.2	11,561.7	278.1	66.9	1.317	Level 3, SF
SRC Wiedeman 21-5-3CHZ - Wellbore #1 - Plan #2 (9-2	500.0	500.0	75.1	73.0	37.104	CC, ES
SRC Wiedeman 21-5-3CHZ - Wellbore #1 - Plan #2 (9-2	900.0	887.6	101.7	97.9	26.604	SF
SRC Wiedeman 21-5-3NBHZ - Wellbore #1 - Plan #3 (9-	1,000.0	1,000.0	60.0	55.8	14.056	CC, ES
SRC Wiedeman 21-5-3NBHZ - Wellbore #1 - Plan #3 (9-	11,770.2	11,670.8	976.4	715.7	3.745	SF
SRC Wiedeman 22-5-4CHZ - Wellbore #1 - Plan #2 (9-0	500.0	500.0	30.0	28.0	14.830	CC, ES
SRC Wiedeman 22-5-4CHZ - Wellbore #1 - Plan #2 (9-0	11,770.2	11,832.8	498.1	236.0	1.900	SF
SRC Wiedeman 22-5-4NBHZ - Wellbore #1 - Plan #3 (9	800.0	800.0	15.0	11.6	4.451	CC, ES
SRC Wiedeman 22-5-4NBHZ - Wellbore #1 - Plan #3 (9	11,770.2	11,632.1	324.9	97.6	1.429	Level 3, SF
SRC Wiedeman A-5-3NBHZ - Wellbore #1 - Plan #3 (9-2	1,000.0	1,000.0	30.0	25.8	7.032	CC, ES
SRC Wiedeman A-5-3NBHZ - Wellbore #1 - Plan #3 (9-2	11,770.2	11,689.2	536.4	274.8	2.051	SF

Company:	Synergy Resources	Local Co-ordinate Reference:	Well SRC Wiedeman 12-5-4NCHZ
Project:	Sec.5-T5N-R66W	TVD Reference:	WELL @ 4796.0ft (RKB - 13')
Reference Site:	SRC Wiedeman Pad Sec.5-T5N-R66W	MD Reference:	WELL @ 4796.0ft (RKB - 13')
Site Error:	0.0ft	North Reference:	True
Reference Well:	SRC Wiedeman 12-5-4NCHZ	Survey Calculation Method:	Minimum Curvature
Well Error:	0.0ft	Output errors are at	2.00 sigma
Reference Wellbore	Wellbore #1	Database:	Landmark
Reference Design:	Plan #3 (9-24-14)	Offset TVD Reference:	Offset Datum

Offset Design Northridge Pad Sec.4-T5N-R66W - Northridge 12-4D (Exist.) - Wellbore #1 - Wellbore #1												Offset Site Error:	0.0 ft
Survey Program: 182-MWD												Offset Well Error:	0.0 ft
Reference		Offset		Semi Major Axis			Distance						
Measured Depth (ft)	Vertical Depth (ft)	Measured Depth (ft)	Vertical Depth (ft)	Reference (ft)	Offset (ft)	Highside Toolface (°)	Offset Wellbore Centre +N/-S (ft)	+E/-W (ft)	Between Centres (ft)	Between Ellipses (ft)	Minimum Separation (ft)	Separation Factor	Warning
9,500.0	7,223.0	7,494.8	7,187.1	68.9	38.0	91.99	-559.8	3,267.6	935.9	829.3	106.59	8.781	
9,600.0	7,223.0	7,493.9	7,186.3	71.6	38.0	91.72	-559.8	3,267.6	837.9	728.6	109.34	7.664	
9,700.0	7,223.0	7,493.1	7,185.5	74.3	38.0	91.46	-559.8	3,267.6	740.5	628.4	112.09	6.606	
9,800.0	7,223.0	7,492.3	7,184.7	77.1	38.0	91.20	-559.8	3,267.6	643.8	529.0	114.85	5.606	
9,900.0	7,223.0	7,491.6	7,183.9	79.8	38.0	90.95	-559.8	3,267.7	548.3	430.7	117.60	4.663	
10,000.0	7,223.0	7,490.8	7,183.2	82.6	38.0	90.71	-559.8	3,267.7	454.8	334.5	120.36	3.779	
10,100.0	7,223.0	7,490.1	7,182.4	85.3	38.0	90.47	-559.8	3,267.7	364.7	241.6	123.12	2.962	
10,200.0	7,223.0	7,489.3	7,181.7	88.1	38.0	90.23	-559.8	3,267.7	281.4	155.6	125.89	2.236	
10,300.0	7,223.0	7,488.6	7,181.0	90.8	38.0	90.00	-559.8	3,267.7	213.0	84.4	128.65	1.656	
10,400.0	7,223.0	7,488.0	7,180.3	93.6	38.0	89.78	-559.8	3,267.7	177.6	46.2	131.41	1.352 Level 3	
10,419.1	7,223.0	7,487.8	7,180.2	94.1	38.0	89.74	-559.8	3,267.7	176.6	44.7	131.94	1.339 Level 3, CC, ES, SF	
10,500.0	7,223.0	7,487.3	7,179.6	96.4	38.0	89.56	-559.8	3,267.7	194.2	60.1	134.18	1.448 Level 3	
10,600.0	7,223.0	7,486.6	7,179.0	99.1	38.0	89.35	-559.8	3,267.7	252.8	115.9	136.94	1.846	
10,700.0	7,223.0	7,486.0	7,178.3	101.9	38.0	89.14	-559.8	3,267.7	331.8	192.1	139.71	2.375	
10,800.0	7,223.0	7,485.3	7,177.7	104.7	38.0	88.93	-559.8	3,267.7	419.8	277.3	142.47	2.947	
10,900.0	7,223.0	7,484.7	7,177.1	107.4	38.0	88.73	-559.8	3,267.7	512.3	367.0	145.24	3.527	
11,000.0	7,223.0	7,484.1	7,176.5	110.2	38.0	88.54	-559.8	3,267.7	607.1	459.1	148.00	4.102	
11,100.0	7,223.0	7,483.5	7,175.9	113.0	38.0	88.35	-559.8	3,267.7	703.4	552.6	150.76	4.666	
11,200.0	7,223.0	7,483.0	7,175.3	115.8	38.0	88.16	-559.8	3,267.7	800.6	647.1	153.53	5.215	
11,300.0	7,223.0	7,482.4	7,174.8	118.5	38.0	87.98	-559.8	3,267.7	898.4	742.1	156.29	5.748	
11,400.0	7,223.0	7,481.8	7,174.2	121.3	38.0	87.80	-559.8	3,267.7	996.6	837.6	159.05	6.266	

Company:	Synergy Resources	Local Co-ordinate Reference:	Well SRC Wiedeman 12-5-4NCHZ
Project:	Sec.5-T5N-R66W	TVD Reference:	WELL @ 4796.0ft (RKB - 13')
Reference Site:	SRC Wiedeman Pad Sec.5-T5N-R66W	MD Reference:	WELL @ 4796.0ft (RKB - 13')
Site Error:	0.0ft	North Reference:	True
Reference Well:	SRC Wiedeman 12-5-4NCHZ	Survey Calculation Method:	Minimum Curvature
Well Error:	0.0ft	Output errors are at	2.00 sigma
Reference Wellbore	Wellbore #1	Database:	Landmark
Reference Design:	Plan #3 (9-24-14)	Offset TVD Reference:	Offset Datum

Offset Design Northridge Pad Sec.4-T5N-R66W - Northridge 22-4D (Exist.) - Wellbore #1 - Wellbore #1												Offset Site Error:	0.0 ft
Survey Program: 182-MWD												Offset Well Error:	0.0 ft
Reference	Offset	Semi Major Axis		Distance									
Measured Depth (ft)	Vertical Depth (ft)	Measured Depth (ft)	Vertical Depth (ft)	Reference (ft)	Offset (ft)	Highside Toolface (°)	Offset Wellbore Centre +N/-S (ft)	+E/-W (ft)	Between Centres (ft)	Between Ellipses (ft)	Minimum Separation (ft)	Separation Factor	Warning
10,700.0	7,223.0	7,262.2	7,193.9	101.9	18.7	91.86	-760.6	4,460.7	991.4	871.1	120.34	8.239	
10,800.0	7,223.0	7,259.4	7,191.1	104.7	18.7	91.46	-760.5	4,460.8	900.6	777.5	123.13	7.314	
10,900.0	7,223.0	7,256.6	7,188.3	107.4	18.7	91.06	-760.5	4,460.9	811.9	686.0	125.92	6.448	
11,000.0	7,223.0	7,253.8	7,185.5	110.2	18.7	90.66	-760.4	4,461.0	726.2	597.5	128.71	5.642	
11,100.0	7,223.0	7,251.1	7,182.8	113.0	18.7	90.25	-760.3	4,461.0	644.6	513.1	131.49	4.902	
11,200.0	7,223.0	7,248.3	7,180.0	115.8	18.6	89.85	-760.2	4,461.1	568.9	434.6	134.27	4.237	
11,300.0	7,223.0	7,245.5	7,177.2	118.5	18.6	89.45	-760.1	4,461.2	501.8	364.7	137.05	3.661	
11,400.0	7,223.0	7,242.8	7,174.5	121.3	18.6	89.05	-760.0	4,461.3	447.1	307.2	139.81	3.198	
11,500.0	7,223.0	7,240.0	7,171.7	124.1	18.6	88.65	-759.9	4,461.3	409.8	267.2	142.58	2.874	
11,600.0	7,223.0	7,237.2	7,168.9	126.9	18.6	88.25	-759.8	4,461.4	395.0	249.6	145.33	2.718	
11,609.7	7,223.0	7,237.0	7,168.7	127.1	18.6	88.21	-759.8	4,461.4	394.9	249.3	145.60	2.712 CC, ES, SF	
11,700.0	7,223.0	7,234.5	7,166.2	129.7	18.6	87.85	-759.7	4,461.5	405.0	256.9	148.08	2.735	
11,770.2	7,223.0	7,232.6	7,164.3	130.9	18.6	87.57	-759.7	4,461.6	426.2	276.9	149.32	2.854	

Company:	Synergy Resources	Local Co-ordinate Reference:	Well SRC Wiedeman 12-5-4NCHZ
Project:	Sec.5-T5N-R66W	TVD Reference:	WELL @ 4796.0ft (RKB - 13')
Reference Site:	SRC Wiedeman Pad Sec.5-T5N-R66W	MD Reference:	WELL @ 4796.0ft (RKB - 13')
Site Error:	0.0ft	North Reference:	True
Reference Well:	SRC Wiedeman 12-5-4NCHZ	Survey Calculation Method:	Minimum Curvature
Well Error:	0.0ft	Output errors are at	2.00 sigma
Reference Wellbore	Wellbore #1	Database:	Landmark
Reference Design:	Plan #3 (9-24-14)	Offset TVD Reference:	Offset Datum

Offset Design Northridge Pad Sec.4-T5N-R66W - Northridge 4AD (Exist.) - Wellbore #1 - Wellbore #1												Offset Site Error:	0.0 ft
Survey Program: 182-MWD												Offset Well Error:	0.0 ft
Reference		Offset		Semi Major Axis			Distance						
Measured Depth (ft)	Vertical Depth (ft)	Measured Depth (ft)	Vertical Depth (ft)	Reference (ft)	Offset (ft)	Highside Toolface (°)	Offset Wellbore Centre +N/-S (ft)	+E/-W (ft)	Between Centres (ft)	Between Ellipses (ft)	Minimum Separation (ft)	Separation Factor	Warning
10,200.0	7,223.0	7,376.5	7,186.8	88.1	28.9	-91.10	-20.9	3,906.8	935.3	820.7	114.63	8.159	
10,300.0	7,223.0	7,375.3	7,185.6	90.8	28.9	-90.90	-21.0	3,906.8	843.5	726.1	117.40	7.185	
10,400.0	7,223.0	7,374.1	7,184.4	93.6	28.9	-90.71	-21.0	3,906.8	753.8	633.7	120.17	6.273	
10,500.0	7,223.0	7,372.9	7,183.2	96.4	28.9	-90.52	-21.0	3,906.8	667.1	544.2	122.94	5.426	
10,600.0	7,223.0	7,371.7	7,182.0	99.1	28.9	-90.32	-21.0	3,906.8	584.6	458.9	125.71	4.650	
10,700.0	7,223.0	7,370.5	7,180.8	101.9	28.9	-90.13	-21.0	3,906.9	508.4	379.9	128.48	3.957	
10,800.0	7,223.0	7,369.3	7,179.6	104.7	28.9	-89.93	-21.0	3,906.9	441.8	310.6	131.25	3.366	
10,900.0	7,223.0	7,368.1	7,178.4	107.4	28.9	-89.74	-21.0	3,906.9	389.8	255.7	134.02	2.908	
11,000.0	7,223.0	7,366.9	7,177.2	110.2	28.9	-89.54	-21.0	3,906.9	358.6	221.8	136.79	2.622	
11,066.4	7,223.0	7,366.2	7,176.4	112.1	28.9	-89.42	-21.0	3,906.9	352.4	213.8	138.63	2.542 CC, ES	
11,100.0	7,223.0	7,365.8	7,176.0	113.0	28.9	-89.35	-21.1	3,906.9	354.0	214.5	139.56	2.537 SF	
11,200.0	7,223.0	7,364.6	7,174.8	115.8	28.9	-89.16	-21.1	3,906.9	376.9	234.6	142.34	2.648	
11,300.0	7,223.0	7,363.4	7,173.6	118.5	28.9	-88.96	-21.1	3,906.9	422.8	277.7	145.11	2.914	
11,400.0	7,223.0	7,362.2	7,172.4	121.3	28.9	-88.77	-21.1	3,907.0	485.2	337.4	147.88	3.281	
11,500.0	7,223.0	7,361.0	7,171.2	124.1	28.9	-88.57	-21.1	3,907.0	558.7	408.1	150.65	3.709	
11,600.0	7,223.0	7,359.8	7,170.0	126.9	28.9	-88.38	-21.1	3,907.0	639.4	486.0	153.42	4.168	
11,700.0	7,223.0	7,358.6	7,168.8	129.7	28.9	-88.19	-21.1	3,907.0	724.9	568.8	156.18	4.642	
11,770.2	7,223.0	7,357.7	7,168.0	130.9	28.9	-88.05	-21.1	3,907.0	787.1	629.6	157.44	4.999	

Company:	Synergy Resources	Local Co-ordinate Reference:	Well SRC Wiedeman 12-5-4NCHZ
Project:	Sec.5-T5N-R66W	TVD Reference:	WELL @ 4796.0ft (RKB - 13')
Reference Site:	SRC Wiedeman Pad Sec.5-T5N-R66W	MD Reference:	WELL @ 4796.0ft (RKB - 13')
Site Error:	0.0ft	North Reference:	True
Reference Well:	SRC Wiedeman 12-5-4NCHZ	Survey Calculation Method:	Minimum Curvature
Well Error:	0.0ft	Output errors are at	2.00 sigma
Reference Wellbore	Wellbore #1	Database:	Landmark
Reference Design:	Plan #3 (9-24-14)	Offset TVD Reference:	Offset Datum

Offset Design Northridge Pad Sec.4-T5N-R66W - Northridge 4KD (Exist.) - Wellbore #1 - Wellbore #1												Offset Site Error:	0.0 ft
Survey Program: 124-MWD												Offset Well Error:	0.0 ft
Reference	Offset	Semi Major Axis		Distance									
Measured Depth (ft)	Vertical Depth (ft)	Measured Depth (ft)	Vertical Depth (ft)	Reference (ft)	Offset (ft)	Highside Toolface (°)	Offset Wellbore Centre +N/-S (ft)	+E/-W (ft)	Between Centres (ft)	Between Ellipses (ft)	Minimum Separation (ft)	Separation Factor	Warning
10,800.0	7,223.0	7,410.7	7,172.9	104.7	43.4	89.53	-1,367.6	3,720.1	993.0	848.8	144.21	6.886	
10,859.3	7,223.0	7,411.1	7,173.2	106.3	43.4	89.55	-1,367.6	3,720.1	991.2	845.4	145.85	6.796 CC	
10,900.0	7,223.0	7,411.3	7,173.5	107.4	43.4	89.56	-1,367.6	3,720.1	992.0	845.1	146.98	6.749 ES, SF	

Company:	Synergy Resources	Local Co-ordinate Reference:	Well SRC Wiedeman 12-5-4NCHZ
Project:	Sec.5-T5N-R66W	TVD Reference:	WELL @ 4796.0ft (RKB - 13')
Reference Site:	SRC Wiedeman Pad Sec.5-T5N-R66W	MD Reference:	WELL @ 4796.0ft (RKB - 13')
Site Error:	0.0ft	North Reference:	True
Reference Well:	SRC Wiedeman 12-5-4NCHZ	Survey Calculation Method:	Minimum Curvature
Well Error:	0.0ft	Output errors are at	2.00 sigma
Reference Wellbore	Wellbore #1	Database:	Landmark
Reference Design:	Plan #3 (9-24-14)	Offset TVD Reference:	Offset Datum

Offset Design												Offset Site Error:	0.0 ft
SRC Kelly Farms Pad Sec.4-T5N-R66W - SRC Kelly Farms 12-4-3CHZ - Wellbore #1 - Wellbore #1												Offset Well Error:	0.0 ft
Survey Program: 169-MWD													
Reference		Offset		Semi Major Axis			Distance						
Measured Depth (ft)	Vertical Depth (ft)	Measured Depth (ft)	Vertical Depth (ft)	Reference (ft)	Offset (ft)	Highside Toolface (°)	Offset Wellbore Centre +N/-S (ft)	+E/-W (ft)	Between Centres (ft)	Between Ellipses (ft)	Minimum Separation (ft)	Separation Factor	Warning
11,100.0	7,223.0	6,819.0	6,800.7	113.0	14.2	26.01	-550.2	4,828.3	981.3	915.1	66.22	14.819	
11,200.0	7,223.0	6,836.9	6,817.0	115.8	14.2	26.93	-549.7	4,835.9	892.4	823.3	69.08	12.918	
11,300.0	7,223.0	6,877.0	6,852.5	118.5	14.3	29.16	-548.3	4,854.4	805.5	731.3	74.16	10.862	
11,400.0	7,223.0	6,877.0	6,852.5	121.3	14.3	29.16	-548.3	4,854.4	719.5	643.8	75.64	9.512	
11,500.0	7,223.0	6,903.1	6,875.0	124.1	14.4	30.75	-547.3	4,867.6	636.4	556.6	79.87	7.969	
11,600.0	7,223.0	6,930.3	6,897.7	126.9	14.5	32.55	-546.3	4,882.5	556.6	472.0	84.55	6.583	
11,700.0	7,223.0	6,966.0	6,926.4	129.7	14.7	35.14	-545.1	4,903.7	480.9	390.1	90.75	5.299	
11,770.2	7,223.0	6,987.6	6,943.1	130.9	14.8	36.84	-544.3	4,917.4	430.7	336.2	94.50	4.558	CC, ES, SF

Company:	Synergy Resources	Local Co-ordinate Reference:	Well SRC Wiedeman 12-5-4NCHZ
Project:	Sec.5-T5N-R66W	TVD Reference:	WELL @ 4796.0ft (RKB - 13')
Reference Site:	SRC Wiedeman Pad Sec.5-T5N-R66W	MD Reference:	WELL @ 4796.0ft (RKB - 13')
Site Error:	0.0ft	North Reference:	True
Reference Well:	SRC Wiedeman 12-5-4NCHZ	Survey Calculation Method:	Minimum Curvature
Well Error:	0.0ft	Output errors are at	2.00 sigma
Reference Wellbore	Wellbore #1	Database:	Landmark
Reference Design:	Plan #3 (9-24-14)	Offset TVD Reference:	Offset Datum

Offset Design												Offset Site Error:	0.0 ft
SRC Kelly Farms Pad Sec.4-T5N-R66W - SRC Kelly Farms 22-4-3CHZ - Wellbore #1 - Wellbore #1												Offset Well Error:	0.0 ft
Survey Program: 80-MWD													
Reference		Offset		Semi Major Axis			Distance						
Measured Depth (ft)	Vertical Depth (ft)	Measured Depth (ft)	Vertical Depth (ft)	Reference (ft)	Offset (ft)	Highside Toolface (°)	Offset Wellbore Centre +N/-S (ft)	+E/-W (ft)	Between Centres (ft)	Between Ellipses (ft)	Minimum Separation (ft)	Separation Factor	Warning
11,300.0	7,223.0	6,848.6	6,828.0	118.5	14.8	49.87	-793.4	4,893.6	934.3	828.7	105.65	8.844	
11,400.0	7,223.0	6,883.0	6,858.4	121.3	14.9	52.30	-793.3	4,909.7	856.9	745.8	111.08	7.714	
11,500.0	7,223.0	6,883.0	6,858.4	124.1	14.9	52.30	-793.3	4,909.7	782.8	669.5	113.32	6.908	
11,600.0	7,223.0	6,919.3	6,889.7	126.9	15.1	55.02	-793.7	4,928.0	713.4	594.2	119.19	5.985	
11,700.0	7,223.0	6,949.6	6,915.3	129.7	15.2	57.40	-794.5	4,944.2	649.8	525.2	124.57	5.216	
11,770.2	7,223.0	6,972.0	6,933.8	130.9	15.3	59.22	-795.4	4,956.7	609.3	481.4	127.89	4.764 CC, ES, SF	

Company:	Synergy Resources	Local Co-ordinate Reference:	Well SRC Wiedeman 12-5-4NCHZ
Project:	Sec.5-T5N-R66W	TVD Reference:	WELL @ 4796.0ft (RKB - 13')
Reference Site:	SRC Wiedeman Pad Sec.5-T5N-R66W	MD Reference:	WELL @ 4796.0ft (RKB - 13')
Site Error:	0.0ft	North Reference:	True
Reference Well:	SRC Wiedeman 12-5-4NCHZ	Survey Calculation Method:	Minimum Curvature
Well Error:	0.0ft	Output errors are at	2.00 sigma
Reference Wellbore	Wellbore #1	Database:	Landmark
Reference Design:	Plan #3 (9-24-14)	Offset TVD Reference:	Offset Datum

Offset Design SRC Kelly Farms Pad Sec.4-T5N-R66W - SRC Kelly Farms A-4-3CHZ - Wellbore #1 - Wellbore #1												Offset Site Error:	0.0 ft
Survey Program: 79-MWD												Offset Well Error:	0.0 ft
Reference		Offset		Semi Major Axis			Distance						
Measured Depth (ft)	Vertical Depth (ft)	Measured Depth (ft)	Vertical Depth (ft)	Reference (ft)	Offset (ft)	Highside Toolface (°)	Offset Wellbore Centre +N/-S (ft)	+E/-W (ft)	Between Centres (ft)	Between Ellipses (ft)	Minimum Separation (ft)	Separation Factor	Warning
11,200.0	7,223.0	6,852.9	6,822.7	115.8	15.1	-2.73	-340.8	4,900.3	931.6	892.3	39.30	23.707	
11,300.0	7,223.0	6,886.0	6,852.6	118.5	15.2	-2.65	-342.5	4,914.3	840.8	800.7	40.04	20.999	
11,400.0	7,223.0	6,886.0	6,852.6	121.3	15.2	-2.65	-342.5	4,914.3	750.4	709.7	40.76	18.410	
11,500.0	7,223.0	6,886.0	6,852.6	124.1	15.2	-2.65	-342.5	4,914.3	662.8	621.4	41.49	15.977	
11,600.0	7,223.0	6,928.0	6,889.2	126.9	15.3	-2.59	-344.2	4,934.8	575.9	533.7	42.24	13.635	
11,700.0	7,223.0	6,975.0	6,927.8	129.7	15.5	-2.64	-345.3	4,961.6	493.3	450.3	43.04	11.463	
11,770.2	7,223.0	6,975.0	6,927.8	130.9	15.5	-2.64	-345.3	4,961.6	435.7	392.4	43.29	10.064 CC, ES, SF	

Company:	Synergy Resources	Local Co-ordinate Reference:	Well SRC Wiedeman 12-5-4NCHZ
Project:	Sec.5-T5N-R66W	TVD Reference:	WELL @ 4796.0ft (RKB - 13')
Reference Site:	SRC Wiedeman Pad Sec.5-T5N-R66W	MD Reference:	WELL @ 4796.0ft (RKB - 13')
Site Error:	0.0ft	North Reference:	True
Reference Well:	SRC Wiedeman 12-5-4NCHZ	Survey Calculation Method:	Minimum Curvature
Well Error:	0.0ft	Output errors are at	2.00 sigma
Reference Wellbore	Wellbore #1	Database:	Landmark
Reference Design:	Plan #3 (9-24-14)	Offset TVD Reference:	Offset Datum

Offset Design												Offset Site Error:	0.0 ft
SRC Kelly Farms Pad Sec.4-T5N-R66W - SRC Kelly Farms A-4-3NHZ - Wellbore #1 - Wellbore #1												Offset Well Error:	0.0 ft
Survey Program: 174-MWD													
Reference		Offset		Semi Major Axis			Distance						
Measured Depth (ft)	Vertical Depth (ft)	Measured Depth (ft)	Vertical Depth (ft)	Reference (ft)	Offset (ft)	Highside Toolface (°)	Offset Wellbore Centre +N/-S (ft)	+E/-W (ft)	Between Centres (ft)	Between Ellipses (ft)	Minimum Separation (ft)	Separation Factor	Warning
11,300.0	7,223.0	6,704.0	6,651.1	118.5	16.6	-25.81	-96.6	4,865.7	941.9	873.6	68.24	13.801	
11,400.0	7,223.0	6,739.2	6,679.4	121.3	16.7	-27.15	-95.0	4,886.4	865.7	793.7	71.95	12.031	
11,500.0	7,223.0	6,767.1	6,701.1	124.1	16.8	-28.26	-93.7	4,904.1	793.0	717.6	75.35	10.524	
11,600.0	7,223.0	6,794.0	6,721.1	126.9	17.0	-29.35	-92.5	4,921.9	724.1	645.3	78.80	9.188	
11,700.0	7,223.0	6,857.2	6,766.8	129.7	17.2	-32.10	-89.8	4,965.5	658.3	572.9	85.47	7.703	
11,770.2	7,223.0	6,883.0	6,785.2	130.9	17.4	-33.33	-88.7	4,983.6	614.0	525.6	88.46	6.941 CC, ES, SF	

Company:	Synergy Resources	Local Co-ordinate Reference:	Well SRC Wiedeman 12-5-4NCHZ
Project:	Sec.5-T5N-R66W	TVD Reference:	WELL @ 4796.0ft (RKB - 13')
Reference Site:	SRC Wiedeman Pad Sec.5-T5N-R66W	MD Reference:	WELL @ 4796.0ft (RKB - 13')
Site Error:	0.0ft	North Reference:	True
Reference Well:	SRC Wiedeman 12-5-4NCHZ	Survey Calculation Method:	Minimum Curvature
Well Error:	0.0ft	Output errors are at	2.00 sigma
Reference Wellbore	Wellbore #1	Database:	Landmark
Reference Design:	Plan #3 (9-24-14)	Offset TVD Reference:	Offset Datum

Offset Design													Offset Site Error:	0.0 ft
Survey Program: 0-MWD													Offset Well Error:	0.0 ft
Reference		Offset		Semi Major Axis			Distance							Warning
Measured Depth (ft)	Vertical Depth (ft)	Measured Depth (ft)	Vertical Depth (ft)	Reference (ft)	Offset (ft)	Highside Toolface (°)	Offset Wellbore Centre +N/-S (ft)	+E/-W (ft)	Between Centres (ft)	Between Ellipses (ft)	Minimum Separation (ft)	Separation Factor		
0.0	0.0	0.0	0.0	0.0	0.0	5.68	44.8	4.5	45.0					
100.0	100.0	100.0	100.0	0.1	0.1	5.68	44.8	4.5	45.0	44.8	0.22	200.348		
200.0	200.0	200.0	200.0	0.3	0.3	5.68	44.8	4.5	45.0	44.4	0.67	66.783		
300.0	300.0	300.0	300.0	0.6	0.6	5.68	44.8	4.5	45.0	43.9	1.12	40.070		
400.0	400.0	400.0	400.0	0.8	0.8	5.68	44.8	4.5	45.0	43.5	1.57	28.621		
500.0	500.0	500.0	500.0	1.0	1.0	5.68	44.8	4.5	45.0	43.0	2.02	22.261		
600.0	600.0	600.0	600.0	1.2	1.2	5.68	44.8	4.5	45.0	42.6	2.47	18.213		
700.0	700.0	700.0	700.0	1.5	1.5	5.68	44.8	4.5	45.0	42.1	2.92	15.411		
800.0	800.0	800.0	800.0	1.7	1.7	5.68	44.8	4.5	45.0	41.7	3.37	13.357		
900.0	900.0	900.0	900.0	1.9	1.9	5.68	44.8	4.5	45.0	41.2	3.82	11.785		
1,000.0	1,000.0	1,000.0	1,000.0	2.1	2.1	5.68	44.8	4.5	45.0	40.8	4.27	10.545 CC, ES		
1,100.0	1,100.0	1,100.0	1,100.0	2.3	2.4	160.79	44.8	4.5	46.7	42.0	4.69	9.947		
1,200.0	1,199.8	1,199.8	1,199.8	2.5	2.6	162.67	44.8	4.5	51.6	46.6	5.09	10.143		
1,300.0	1,299.5	1,299.5	1,299.5	2.7	2.8	165.11	44.8	4.5	60.0	54.5	5.49	10.926		
1,358.5	1,357.5	1,357.5	1,357.5	2.8	2.9	166.56	44.8	4.5	66.5	60.8	5.73	11.612		
1,400.0	1,398.7	1,398.7	1,398.7	2.9	3.0	167.53	44.8	4.5	71.6	65.7	5.90	12.127		
1,500.0	1,498.0	1,498.0	1,498.0	3.2	3.3	169.37	44.8	4.5	83.8	77.5	6.32	13.253		
1,600.0	1,597.2	1,594.7	1,594.7	3.4	3.5	170.12	46.2	3.8	97.4	90.6	6.75	14.428		
1,700.0	1,696.4	1,690.6	1,690.5	3.7	3.7	169.63	50.6	2.0	113.5	106.3	7.18	15.811		
1,800.0	1,795.6	1,785.6	1,785.1	4.0	3.9	168.40	57.9	-1.2	132.2	124.6	7.61	17.366		
1,900.0	1,894.8	1,880.5	1,879.4	4.2	4.1	166.77	67.9	-5.5	153.5	145.5	8.06	19.047		
2,000.0	1,994.0	1,978.0	1,976.1	4.5	4.4	165.35	79.0	-10.2	175.6	167.1	8.51	20.631		
2,100.0	2,093.3	2,075.4	2,072.8	4.8	4.6	164.24	90.0	-15.0	197.8	188.9	8.97	22.052		
2,200.0	2,192.5	2,172.9	2,169.5	5.1	4.9	163.36	101.1	-19.7	220.1	210.6	9.43	23.330		
2,300.0	2,291.7	2,270.3	2,266.2	5.4	5.1	162.64	112.1	-24.5	242.4	232.5	9.90	24.479		
2,400.0	2,390.9	2,367.7	2,362.9	5.7	5.4	162.04	123.2	-29.2	264.7	254.3	10.37	25.521		
2,500.0	2,490.1	2,465.2	2,459.6	6.1	5.7	161.53	134.3	-33.9	287.0	276.2	10.84	26.466		
2,600.0	2,589.4	2,562.6	2,556.3	6.4	5.9	161.10	145.3	-38.7	309.4	298.1	11.32	27.328		
2,700.0	2,688.6	2,660.1	2,653.0	6.7	6.2	160.72	156.4	-43.4	331.8	320.0	11.80	28.115		
2,800.0	2,787.8	2,757.5	2,749.7	7.0	6.5	160.39	167.5	-48.2	354.2	341.9	12.28	28.837		
2,900.0	2,887.0	2,855.0	2,846.4	7.3	6.8	160.10	178.5	-52.9	376.5	363.8	12.76	29.501		
3,000.0	2,986.2	2,952.4	2,943.1	7.6	7.1	159.85	189.6	-57.7	399.0	385.7	13.25	30.114		
3,100.0	3,085.4	3,049.8	3,039.8	7.9	7.4	159.62	200.6	-62.4	421.4	407.6	13.73	30.680		
3,200.0	3,184.7	3,147.3	3,136.5	8.3	7.7	159.41	211.7	-67.2	443.8	429.6	14.22	31.206		
3,300.0	3,283.9	3,244.7	3,233.2	8.6	8.0	159.23	222.8	-71.9	466.2	451.5	14.71	31.694		
3,400.0	3,383.1	3,342.2	3,329.9	8.9	8.2	159.06	233.8	-76.7	488.6	473.4	15.20	32.149		
3,500.0	3,482.3	3,439.6	3,426.6	9.2	8.5	158.90	244.9	-81.4	511.1	495.4	15.69	32.573		
3,600.0	3,581.5	3,537.1	3,523.3	9.6	8.8	158.76	256.0	-86.2	533.5	517.3	16.18	32.970		
3,700.0	3,680.8	3,634.5	3,620.0	9.9	9.1	158.63	267.0	-90.9	555.9	539.3	16.67	33.343		
3,800.0	3,780.0	3,731.9	3,716.7	10.2	9.4	158.51	278.1	-95.7	578.4	561.2	17.17	33.692		
3,900.0	3,879.2	3,829.4	3,813.4	10.5	9.7	158.40	289.1	-100.4	600.8	583.2	17.66	34.021		
4,000.0	3,978.4	3,926.8	3,910.0	10.8	10.0	158.30	300.2	-105.2	623.3	605.1	18.15	34.331		
4,100.0	4,077.6	4,024.3	4,006.7	11.2	10.3	158.20	311.3	-109.9	645.7	627.1	18.65	34.623		
4,200.0	4,176.8	4,121.7	4,103.4	11.5	10.6	158.11	322.3	-114.7	668.1	649.0	19.14	34.900		
4,300.0	4,276.1	4,219.2	4,200.1	11.8	10.9	158.03	333.4	-119.4	690.6	671.0	19.64	35.161		
4,400.0	4,375.3	4,331.2	4,311.4	12.2	11.2	157.97	345.4	-124.6	712.5	692.4	20.14	35.378		
4,500.0	4,474.5	4,457.8	4,437.6	12.5	11.5	158.08	354.6	-128.5	731.1	710.4	20.62	35.461		
4,600.0	4,573.7	4,586.1	4,565.8	12.8	11.7	158.39	358.6	-130.3	745.7	724.6	21.08	35.374		
4,700.0	4,672.9	4,693.2	4,672.9	13.1	11.9	158.76	358.8	-130.3	757.5	735.9	21.52	35.202		
4,800.0	4,772.2	4,792.4	4,772.2	13.5	12.1	159.09	358.8	-130.3	769.1	747.1	21.97	35.006		
4,870.9	4,842.5	4,862.7	4,842.5	13.7	12.2	159.32	358.8	-130.3	777.4	755.1	22.29	34.871		
4,900.0	4,871.4	4,891.7	4,871.4	13.8	12.3	159.44	358.8	-130.3	780.7	758.2	22.44	34.794		

CC - Min centre to center distance or convergent point, SF - min separation factor, ES - min ellipse separation

Company:	Synergy Resources	Local Co-ordinate Reference:	Well SRC Wiedeman 12-5-4NCHZ
Project:	Sec.5-T5N-R66W	TVD Reference:	WELL @ 4796.0ft (RKB - 13')
Reference Site:	SRC Wiedeman Pad Sec.5-T5N-R66W	MD Reference:	WELL @ 4796.0ft (RKB - 13')
Site Error:	0.0ft	North Reference:	True
Reference Well:	SRC Wiedeman 12-5-4NCHZ	Survey Calculation Method:	Minimum Curvature
Well Error:	0.0ft	Output errors are at	2.00 sigma
Reference Wellbore	Wellbore #1	Database:	Landmark
Reference Design:	Plan #3 (9-24-14)	Offset TVD Reference:	Offset Datum

Offset Design													Offset Site Error:	0.0 ft
Survey Program: 0-MWD													Offset Well Error:	0.0 ft
Reference		Offset		Semi Major Axis			Distance							Warning
Measured Depth (ft)	Vertical Depth (ft)	Measured Depth (ft)	Vertical Depth (ft)	Reference (ft)	Offset (ft)	Highside Toolface (°)	Offset Wellbore Centre +N/-S (ft)	+E/-W (ft)	Between Centres (ft)	Between Ellipses (ft)	Minimum Separation (ft)	Separation Factor		
5,000.0	4,970.9	4,991.2	4,970.9	14.0	12.5	159.75	358.8	-130.3	789.8	766.9	22.89	34.500		
5,100.0	5,070.7	5,091.0	5,070.7	14.2	12.7	159.95	358.8	-130.3	795.7	772.3	23.32	34.117		
5,200.0	5,170.7	5,190.9	5,170.7	14.3	12.9	160.03	358.8	-130.3	798.3	774.5	23.72	33.650		
5,229.3	5,200.0	5,220.3	5,200.0	14.4	12.9	5.64	358.8	-130.3	798.4	771.7	26.68	29.928		
5,300.0	5,270.7	5,290.9	5,270.7	14.5	13.1	5.64	358.8	-130.3	798.4	771.5	26.93	29.646		
5,400.0	5,370.7	5,390.9	5,370.7	14.7	13.3	5.64	358.8	-130.3	798.4	771.1	27.28	29.268		
5,500.0	5,470.7	5,490.9	5,470.7	14.8	13.5	5.64	358.8	-130.3	798.4	770.8	27.63	28.897		
5,600.0	5,570.7	5,590.9	5,570.7	14.9	13.7	5.64	358.8	-130.3	798.4	770.4	27.98	28.532		
5,700.0	5,670.7	5,690.9	5,670.7	15.1	13.8	5.64	358.8	-130.3	798.4	770.1	28.34	28.174		
5,800.0	5,770.7	5,790.9	5,770.7	15.3	14.0	5.64	358.8	-130.3	798.4	769.7	28.70	27.823		
5,900.0	5,870.7	5,890.9	5,870.7	15.4	14.2	5.64	358.8	-130.3	798.4	769.3	29.06	27.478		
6,000.0	5,970.7	5,990.9	5,970.7	15.6	14.4	5.64	358.8	-130.3	798.4	769.0	29.42	27.139		
6,100.0	6,070.7	6,090.9	6,070.7	15.7	14.6	5.64	358.8	-130.3	798.4	768.6	29.78	26.806		
6,200.0	6,170.7	6,190.9	6,170.7	15.9	14.9	5.64	358.8	-130.3	798.4	768.3	30.15	26.479		
6,300.0	6,270.7	6,290.9	6,270.7	16.0	15.1	5.64	358.8	-130.3	798.4	767.9	30.52	26.159		
6,349.7	6,320.4	6,340.6	6,320.4	16.1	15.2	5.64	358.8	-130.3	798.4	767.7	30.71	26.002		
6,400.0	6,370.7	6,387.4	6,367.1	16.2	15.2	5.68	358.8	-129.7	798.5	767.6	30.88	25.856		
6,500.0	6,470.7	6,475.8	6,454.9	16.4	15.4	6.34	358.9	-120.5	799.7	768.4	31.22	25.613		
6,536.1	6,506.8	6,507.0	6,485.6	16.4	15.4	6.75	358.9	-114.7	800.5	769.1	31.34	25.540		
6,550.0	6,520.7	6,518.8	6,497.2	16.5	15.4	-82.18	358.9	-112.2	800.9	771.9	29.00	27.619		
6,600.0	6,570.6	6,561.3	6,538.2	16.5	15.5	-81.47	359.0	-101.4	802.2	773.1	29.13	27.542		
6,650.0	6,620.2	6,600.0	6,575.1	16.6	15.5	-80.84	359.1	-89.5	803.6	774.3	29.24	27.484		
6,700.0	6,669.2	6,645.0	6,617.1	16.6	15.6	-80.17	359.2	-73.2	804.9	775.6	29.34	27.430		
6,750.0	6,717.5	6,686.4	6,654.6	16.7	15.6	-79.58	359.4	-56.0	806.2	776.8	29.44	27.384		
6,800.0	6,764.7	6,727.4	6,690.9	16.7	15.7	-79.04	359.5	-36.7	807.5	778.0	29.54	27.338		
6,850.0	6,810.7	6,768.2	6,725.7	16.7	15.7	-78.54	359.7	-15.5	808.7	779.1	29.64	27.281		
6,900.0	6,855.2	6,808.8	6,759.1	16.8	15.8	-78.09	359.8	7.4	809.8	780.0	29.77	27.206		
6,950.0	6,898.0	6,850.0	6,791.7	16.8	15.8	-77.68	360.0	32.7	810.8	780.9	29.92	27.098		
7,000.0	6,938.9	6,889.2	6,821.3	16.8	15.9	-77.33	360.2	58.4	811.6	781.5	30.12	26.943		
7,050.0	6,977.7	6,929.2	6,850.0	16.8	15.9	-77.03	360.4	86.3	812.4	782.0	30.39	26.734		
7,100.0	7,014.2	6,969.0	6,877.0	16.8	16.1	-76.78	360.6	115.6	812.9	782.2	30.72	26.459		
7,150.0	7,048.2	7,008.8	6,902.2	16.8	16.3	-76.58	360.8	146.2	813.3	782.2	31.15	26.108		
7,200.0	7,079.6	7,050.0	6,926.6	16.9	16.6	-76.43	361.1	179.5	813.6	781.9	31.70	25.666		
7,250.0	7,108.2	7,088.0	6,947.3	16.9	16.9	-76.35	361.3	211.3	813.6	781.3	32.35	25.148		
7,300.0	7,133.9	7,127.5	6,967.0	17.1	17.4	-76.31	361.6	245.6	813.5	780.3	33.15	24.541		
7,350.0	7,156.5	7,167.1	6,984.8	17.4	17.8	-76.32	361.8	280.9	813.2	779.1	34.08	23.864		
7,400.0	7,175.9	7,206.6	7,000.7	18.0	18.3	-76.39	362.1	317.1	812.7	777.5	35.14	23.127		
7,450.0	7,192.1	7,250.0	7,015.7	18.7	18.9	-76.52	362.4	357.8	812.0	775.6	36.40	22.309		
7,500.0	7,204.9	7,285.8	7,026.3	19.4	19.5	-76.69	362.7	392.0	811.1	773.5	37.69	21.522		
7,550.0	7,214.4	7,325.5	7,036.0	20.3	20.1	-76.91	362.9	430.5	810.1	771.0	39.15	20.693		
7,600.0	7,220.4	7,365.3	7,043.5	21.2	20.8	-77.19	363.2	469.6	809.0	768.2	40.72	19.866		
7,650.0	7,222.9	7,405.2	7,048.9	22.1	21.6	-77.53	363.5	509.1	807.7	765.3	42.39	19.055		
7,661.1	7,223.0	7,414.2	7,049.8	22.3	21.7	-77.61	363.6	518.0	807.4	764.6	42.77	18.876		
7,700.0	7,223.0	7,450.0	7,052.3	23.1	22.4	-77.78	363.8	553.8	806.5	762.3	44.21	18.240		
7,800.0	7,223.0	7,536.6	7,053.0	25.2	24.2	-77.81	364.5	640.4	805.4	757.5	47.98	16.786		
7,900.0	7,223.0	7,636.6	7,053.0	27.4	26.3	-77.80	365.2	740.4	804.7	752.4	52.24	15.403		
8,000.0	7,223.0	7,736.6	7,053.0	29.7	28.5	-77.79	365.9	840.4	803.9	747.2	56.72	14.174		
8,100.0	7,223.0	7,836.6	7,053.0	32.1	30.9	-77.78	366.7	940.4	803.2	741.8	61.36	13.090		
8,200.0	7,223.0	7,936.6	7,053.0	34.5	33.3	-77.77	367.4	1,040.4	802.4	736.3	66.13	12.134		
8,300.0	7,223.0	8,036.6	7,053.0	37.0	35.8	-77.76	368.2	1,140.4	801.6	730.6	71.01	11.290		
8,400.0	7,223.0	8,136.6	7,053.0	39.6	38.3	-77.74	368.9	1,240.4	800.9	724.9	75.97	10.543		
8,500.0	7,223.0	8,236.6	7,053.0	42.2	40.8	-77.73	369.6	1,340.3	800.1	719.1	80.99	9.879		

CC - Min centre to center distance or convergent point, SF - min separation factor, ES - min ellipse separation

Company:	Synergy Resources	Local Co-ordinate Reference:	Well SRC Wiedeman 12-5-4NCHZ
Project:	Sec.5-T5N-R66W	TVD Reference:	WELL @ 4796.0ft (RKB - 13')
Reference Site:	SRC Wiedeman Pad Sec.5-T5N-R66W	MD Reference:	WELL @ 4796.0ft (RKB - 13')
Site Error:	0.0ft	North Reference:	True
Reference Well:	SRC Wiedeman 12-5-4NCHZ	Survey Calculation Method:	Minimum Curvature
Well Error:	0.0ft	Output errors are at	2.00 sigma
Reference Wellbore	Wellbore #1	Database:	Landmark
Reference Design:	Plan #3 (9-24-14)	Offset TVD Reference:	Offset Datum

Offset Design												Offset Site Error:	0.0 ft
Survey Program: 0-MWD												Offset Well Error:	0.0 ft
Reference		Offset		Semi Major Axis			Distance						
Measured Depth (ft)	Vertical Depth (ft)	Measured Depth (ft)	Vertical Depth (ft)	Reference (ft)	Offset (ft)	Highside Toolface (°)	Offset Wellbore Centre +N/-S (ft)	+E/-W (ft)	Between Centres (ft)	Between Ellipses (ft)	Minimum Separation (ft)	Separation Factor	Warning
8,600.0	7,223.0	8,336.6	7,053.0	44.8	43.4	-77.72	370.4	1,440.3	799.4	713.3	86.08	9.287	
8,700.0	7,223.0	8,436.6	7,053.0	47.4	46.0	-77.71	371.1	1,540.3	798.6	707.4	91.21	8.756	
8,800.0	7,223.0	8,536.6	7,053.0	50.0	48.7	-77.70	371.8	1,640.3	797.9	701.5	96.38	8.278	
8,900.0	7,223.0	8,636.6	7,053.0	52.7	51.3	-77.69	372.6	1,740.3	797.1	695.5	101.59	7.847	
9,000.0	7,223.0	8,736.6	7,053.0	55.4	54.0	-77.67	373.3	1,840.3	796.3	689.5	106.82	7.455	
9,100.0	7,223.0	8,836.6	7,053.0	58.0	56.7	-77.66	374.0	1,940.3	795.6	683.5	112.07	7.099	
9,200.0	7,223.0	8,936.6	7,053.0	60.7	59.3	-77.65	374.8	2,040.3	794.8	677.5	117.35	6.773	
9,300.0	7,223.0	9,036.6	7,053.0	63.4	62.1	-77.64	375.5	2,140.3	794.1	671.4	122.65	6.474	
9,400.0	7,223.0	9,136.6	7,053.0	66.2	64.8	-77.63	376.2	2,240.3	793.3	665.3	127.96	6.200	
9,500.0	7,223.0	9,236.6	7,053.0	68.9	67.5	-77.61	377.0	2,340.3	792.5	659.3	133.28	5.946	
9,600.0	7,223.0	9,336.6	7,053.0	71.6	70.2	-77.60	377.7	2,440.3	791.8	653.2	138.62	5.712	
9,700.0	7,223.0	9,436.6	7,053.0	74.3	72.9	-77.59	378.4	2,540.3	791.0	647.1	143.97	5.494	
9,800.0	7,223.0	9,536.6	7,053.0	77.1	75.7	-77.58	379.2	2,640.3	790.3	640.9	149.33	5.292	
9,900.0	7,223.0	9,636.6	7,053.0	79.8	78.4	-77.57	379.9	2,740.3	789.5	634.8	154.69	5.104	
10,000.0	7,223.0	9,736.6	7,053.0	82.6	81.2	-77.55	380.6	2,840.3	788.7	628.7	160.07	4.928	
10,100.0	7,223.0	9,836.6	7,053.0	85.3	83.9	-77.54	381.4	2,940.3	788.0	622.5	165.45	4.763	
10,200.0	7,223.0	9,936.6	7,053.0	88.1	86.7	-77.53	382.1	3,040.3	787.2	616.4	170.84	4.608	
10,300.0	7,223.0	10,036.6	7,053.0	90.8	89.4	-77.52	382.9	3,140.2	786.5	610.2	176.23	4.463	
10,400.0	7,223.0	10,136.6	7,053.0	93.6	92.2	-77.50	383.6	3,240.2	785.7	604.1	181.63	4.326	
10,500.0	7,223.0	10,236.6	7,053.0	96.4	95.0	-77.49	384.3	3,340.2	785.0	597.9	187.03	4.197	
10,600.0	7,223.0	10,336.6	7,053.0	99.1	97.7	-77.48	385.1	3,440.2	784.2	591.8	192.43	4.075	
10,700.0	7,223.0	10,436.6	7,053.0	101.9	100.5	-77.47	385.8	3,540.2	783.4	585.6	197.84	3.960	
10,800.0	7,223.0	10,536.6	7,053.0	104.7	103.3	-77.45	386.5	3,640.2	782.7	579.4	203.26	3.851	
10,900.0	7,223.0	10,636.6	7,053.0	107.4	106.0	-77.44	387.3	3,740.2	781.9	573.2	208.67	3.747	
11,000.0	7,223.0	10,736.6	7,053.0	110.2	108.8	-77.43	388.0	3,840.2	781.2	567.1	214.09	3.649	
11,100.0	7,223.0	10,836.6	7,053.0	113.0	111.6	-77.42	388.7	3,940.2	780.4	560.9	219.51	3.555	
11,200.0	7,223.0	10,936.6	7,053.0	115.8	114.4	-77.41	389.5	4,040.2	779.6	554.7	224.94	3.466	
11,300.0	7,223.0	11,036.6	7,053.0	118.5	117.1	-77.39	390.2	4,140.2	778.9	548.5	230.36	3.381	
11,400.0	7,223.0	11,136.6	7,053.0	121.3	119.9	-77.38	390.9	4,240.2	778.1	542.3	235.79	3.300	
11,500.0	7,223.0	11,236.6	7,053.0	124.1	122.7	-77.37	391.7	4,340.2	777.4	536.2	241.22	3.223	
11,600.0	7,223.0	11,336.6	7,053.0	126.9	125.5	-77.36	392.4	4,440.2	776.6	530.0	246.65	3.149	
11,700.0	7,223.0	11,436.6	7,053.0	129.7	128.3	-77.34	393.1	4,540.2	775.9	523.8	252.09	3.078	
11,770.2	7,223.0	11,506.8	7,053.0	130.9	130.2	-77.33	393.7	4,610.4	775.3	520.1	255.22	3.038 SF	

SRC Wiedeman Pad Sec.5-T5N-R66W - SRC Wiedeman 12-5-4CHZ - Wellbore #1 - Plan #3 (9-24-14)													Offset Site Error:	0.0 ft
Survey Program: 0-MWD													Offset Well Error:	0.0 ft
Reference		Offset		Semi Major Axis			Distance							
Measured Depth (ft)	Vertical Depth (ft)	Measured Depth (ft)	Vertical Depth (ft)	Reference (ft)	Offset (ft)	Highside Toolface (°)	Offset Wellbore Centre +N/-S (ft)	+E/-W (ft)	Between Centres (ft)	Between Ellipses (ft)	Minimum Separation (ft)	Separation Factor	Warning	
0.0	0.0	0.0	0.0	0.0	0.0	5.32	14.9	1.4	15.0	15.0	0.00	N/A		
100.0	100.0	100.0	100.0	0.1	0.1	5.32	14.9	1.4	15.0	14.8	0.22	66.743		
200.0	200.0	200.0	200.0	0.3	0.3	5.32	14.9	1.4	15.0	14.3	0.67	22.248		
300.0	300.0	300.0	300.0	0.6	0.6	5.32	14.9	1.4	15.0	13.9	1.12	13.349		
400.0	400.0	400.0	400.0	0.8	0.8	5.32	14.9	1.4	15.0	13.4	1.57	9.535		
500.0	500.0	500.0	500.0	1.0	1.0	5.32	14.9	1.4	15.0	13.0	2.02	7.416		
600.0	600.0	600.0	600.0	1.2	1.2	5.32	14.9	1.4	15.0	12.5	2.47	6.068		
700.0	700.0	700.0	700.0	1.5	1.5	5.32	14.9	1.4	15.0	12.1	2.92	5.134		
800.0	800.0	800.0	800.0	1.7	1.7	5.32	14.9	1.4	15.0	11.6	3.37	4.450		
900.0	900.0	900.0	900.0	1.9	1.9	5.32	14.9	1.4	15.0	11.2	3.82	3.926		
1,000.0	1,000.0	1,000.0	1,000.0	2.1	2.1	5.32	14.9	1.4	15.0	10.7	4.27	3.513 CC, ES		
1,100.0	1,100.0	1,100.0	1,100.0	2.3	2.4	161.79	14.9	1.4	16.6	12.0	4.69	3.548		
1,200.0	1,199.8	1,199.8	1,199.8	2.5	2.6	166.09	14.9	1.4	21.7	16.6	5.09	4.259		
1,300.0	1,299.5	1,299.5	1,299.5	2.7	2.8	170.04	14.9	1.4	30.2	24.7	5.49	5.501		
1,358.5	1,357.5	1,357.5	1,357.5	2.8	2.9	171.82	14.9	1.4	36.8	31.1	5.73	6.432		
1,400.0	1,398.7	1,398.7	1,398.7	2.9	3.0	172.83	14.9	1.4	42.0	36.1	5.90	7.115		
1,500.0	1,498.0	1,499.7	1,499.7	3.2	3.2	173.87	13.6	0.3	52.8	46.5	6.30	8.380		
1,600.0	1,597.2	1,601.3	1,601.1	3.4	3.4	173.44	9.5	-3.1	60.3	53.6	6.68	9.020		
1,700.0	1,696.4	1,703.3	1,702.7	3.7	3.6	171.97	2.5	-8.8	64.5	57.4	7.08	9.100		
1,800.0	1,795.6	1,803.5	1,802.3	4.0	3.8	169.97	-6.0	-15.7	66.7	59.2	7.50	8.891		
1,900.0	1,894.8	1,903.5	1,901.7	4.2	4.0	168.09	-14.5	-22.7	68.9	61.0	7.92	8.695		
2,000.0	1,994.0	2,003.4	2,001.0	4.5	4.3	166.33	-23.0	-29.7	71.2	62.9	8.36	8.516		
2,100.0	2,093.3	2,103.4	2,100.4	4.8	4.5	164.68	-31.6	-36.7	73.6	64.8	8.81	8.351		
2,200.0	2,192.5	2,203.3	2,199.7	5.1	4.8	163.14	-40.1	-43.7	76.0	66.8	9.27	8.199		
2,300.0	2,291.7	2,303.3	2,299.0	5.4	5.0	161.69	-48.6	-50.6	78.5	68.8	9.75	8.058		
2,400.0	2,390.9	2,403.2	2,398.4	5.7	5.3	160.33	-57.1	-57.6	81.1	70.8	10.23	7.928		
2,500.0	2,490.1	2,503.2	2,497.7	6.1	5.6	159.06	-65.7	-64.6	83.6	72.9	10.71	7.806		
2,600.0	2,589.4	2,603.1	2,597.1	6.4	5.8	157.86	-74.2	-71.6	86.3	75.0	11.21	7.694		
2,700.0	2,688.6	2,703.1	2,696.4	6.7	6.1	156.74	-82.7	-78.5	88.9	77.2	11.72	7.589		
2,800.0	2,787.8	2,803.0	2,795.8	7.0	6.4	155.68	-91.2	-85.5	91.6	79.4	12.23	7.491		
2,900.0	2,887.0	2,903.0	2,895.1	7.3	6.7	154.68	-99.7	-92.5	94.3	81.6	12.75	7.399		
3,000.0	2,986.2	3,002.9	2,994.4	7.6	7.0	153.74	-108.3	-99.5	97.0	83.8	13.27	7.314		
3,100.0	3,085.4	3,102.9	3,093.8	7.9	7.2	152.84	-116.8	-106.5	99.8	86.0	13.80	7.234		
3,200.0	3,184.7	3,202.8	3,193.1	8.3	7.5	152.00	-125.3	-113.4	102.6	88.3	14.33	7.158		
3,300.0	3,283.9	3,302.8	3,292.5	8.6	7.8	151.20	-133.8	-120.4	105.4	90.5	14.87	7.088		
3,400.0	3,383.1	3,402.7	3,391.8	8.9	8.1	150.45	-142.4	-127.4	108.2	92.8	15.42	7.021		
3,500.0	3,482.3	3,502.7	3,491.1	9.2	8.4	149.73	-150.9	-134.4	111.1	95.1	15.96	6.959		
3,600.0	3,581.5	3,602.6	3,590.5	9.6	8.7	149.05	-159.4	-141.3	114.0	97.4	16.51	6.900		
3,700.0	3,680.8	3,702.6	3,689.8	9.9	9.0	148.40	-167.9	-148.3	116.8	99.8	17.07	6.845		
3,800.0	3,780.0	3,802.5	3,789.2	10.2	9.3	147.78	-176.4	-155.3	119.7	102.1	17.63	6.792		
3,900.0	3,879.2	3,902.5	3,888.5	10.5	9.6	147.19	-185.0	-162.3	122.6	104.4	18.19	6.743		
4,000.0	3,978.4	4,002.4	3,987.8	10.8	9.9	146.63	-193.5	-169.3	125.6	106.8	18.75	6.696		
4,100.0	4,077.6	4,102.3	4,087.1	11.2	10.2	146.10	-202.0	-176.2	128.5	109.2	19.32	6.652		
4,200.0	4,176.8	4,200.0	4,184.4	11.5	10.4	146.16	-209.0	-181.9	132.6	112.8	19.81	6.695		
4,300.0	4,276.1	4,295.8	4,280.1	11.8	10.6	147.21	-213.3	-185.5	139.1	118.9	20.21	6.883		
4,400.0	4,375.3	4,392.0	4,376.2	12.2	10.8	149.06	-215.2	-187.0	147.9	127.4	20.53	7.205		
4,500.0	4,474.5	4,490.3	4,474.5	12.5	11.0	151.33	-215.3	-187.1	158.7	137.9	20.84	7.617		
4,600.0	4,573.7	4,589.5	4,573.7	12.8	11.2	153.34	-215.3	-187.1	169.8	148.6	21.16	8.026		
4,700.0	4,672.9	4,688.7	4,672.9	13.1	11.3	155.11	-215.3	-187.1	181.1	159.6	21.49	8.424		
4,800.0	4,772.2	4,788.0	4,772.2	13.5	11.5	156.68	-215.3	-187.1	192.5	170.6	21.84	8.811		
4,870.9	4,842.5	4,858.3	4,842.5	13.7	11.6	157.68	-215.3	-187.1	200.6	178.5	22.10	9.079		
4,900.0	4,871.4	4,887.2	4,871.4	13.8	11.7	158.07	-215.3	-187.1	203.9	181.7	22.20	9.181		

Company:	Synergy Resources	Local Co-ordinate Reference:	Well SRC Wiedeman 12-5-4NCHZ
Project:	Sec.5-T5N-R66W	TVD Reference:	WELL @ 4796.0ft (RKB - 13')
Reference Site:	SRC Wiedeman Pad Sec.5-T5N-R66W	MD Reference:	WELL @ 4796.0ft (RKB - 13')
Site Error:	0.0ft	North Reference:	True
Reference Well:	SRC Wiedeman 12-5-4NCHZ	Survey Calculation Method:	Minimum Curvature
Well Error:	0.0ft	Output errors are at	2.00 sigma
Reference Wellbore	Wellbore #1	Database:	Landmark
Reference Design:	Plan #3 (9-24-14)	Offset TVD Reference:	Offset Datum

Offset Design												Offset Site Error:	0.0 ft
Survey Program: 0-MWD												Offset Well Error:	0.0 ft
Reference		Offset		Semi Major Axis			Distance						
Measured Depth (ft)	Vertical Depth (ft)	Measured Depth (ft)	Vertical Depth (ft)	Reference (ft)	Offset (ft)	Highside Toolface (°)	Offset Wellbore Centre +N/-S (ft)	+E/-W (ft)	Between Centres (ft)	Between Ellipses (ft)	Minimum Separation (ft)	Separation Factor	Warning
5,000.0	4,970.9	4,986.7	4,970.9	14.0	11.9	159.11	-215.3	-187.1	212.9	190.4	22.55	9.442	
5,100.0	5,070.7	5,086.5	5,070.7	14.2	12.0	159.74	-215.3	-187.1	218.8	195.9	22.90	9.555	
5,200.0	5,170.7	5,186.5	5,170.7	14.3	12.2	160.00	-215.3	-187.1	221.4	198.2	23.24	9.528	
5,229.3	5,200.0	5,215.8	5,200.0	14.4	12.3	5.62	-215.3	-187.1	221.5	195.5	26.04	8.507	
5,300.0	5,270.7	5,286.5	5,270.7	14.5	12.4	5.62	-215.3	-187.1	221.5	195.2	26.29	8.427	
5,400.0	5,370.7	5,386.5	5,370.7	14.7	12.6	5.62	-215.3	-187.1	221.5	194.9	26.63	8.320	
5,500.0	5,470.7	5,486.5	5,470.7	14.8	12.8	5.62	-215.3	-187.1	221.5	194.6	26.97	8.215	
5,600.0	5,570.7	5,586.5	5,570.7	14.9	13.0	5.62	-215.3	-187.1	221.5	194.2	27.31	8.112	
5,700.0	5,670.7	5,686.5	5,670.7	15.1	13.2	5.62	-215.3	-187.1	221.5	193.9	27.66	8.010	
5,800.0	5,770.7	5,786.5	5,770.7	15.3	13.4	5.62	-215.3	-187.1	221.5	193.5	28.00	7.910	
5,900.0	5,870.7	5,886.5	5,870.7	15.4	13.5	5.62	-215.3	-187.1	221.5	193.2	28.36	7.812	
6,000.0	5,970.7	5,986.5	5,970.7	15.6	13.7	5.62	-215.3	-187.1	221.5	192.8	28.71	7.716	
6,100.0	6,070.7	6,086.5	6,070.7	15.7	13.9	5.62	-215.3	-187.1	221.5	192.5	29.07	7.621	
6,200.0	6,170.7	6,186.5	6,170.7	15.9	14.1	5.62	-215.3	-187.1	221.5	192.1	29.43	7.528	
6,300.0	6,270.7	6,286.5	6,270.7	16.0	14.3	5.62	-215.3	-187.1	221.5	191.7	29.79	7.437	
6,350.0	6,320.6	6,336.4	6,320.6	16.1	14.4	5.62	-215.3	-187.1	221.5	191.6	29.97	7.391	
6,400.0	6,370.7	6,385.3	6,369.5	16.2	14.5	5.81	-215.3	-186.3	221.6	191.5	30.16	7.349	
6,500.0	6,470.7	6,480.6	6,464.1	16.4	14.6	8.53	-215.1	-175.7	223.2	192.6	30.59	7.296	
6,536.1	6,506.8	6,514.1	6,496.9	16.4	14.7	10.23	-215.0	-169.0	224.5	193.8	30.77	7.298	
6,550.0	6,520.7	6,526.8	6,509.3	16.5	14.7	-78.15	-214.9	-166.0	225.2	197.0	28.17	7.991	
6,600.0	6,570.6	6,572.2	6,553.0	16.5	14.7	-75.50	-214.8	-153.7	227.7	199.5	28.21	8.072	
6,650.0	6,620.2	6,617.1	6,595.3	16.6	14.8	-72.97	-214.5	-138.8	230.7	202.4	28.24	8.168	
6,700.0	6,669.2	6,661.4	6,636.1	16.6	14.8	-70.59	-214.3	-121.5	233.9	205.7	28.26	8.276	
6,750.0	6,717.5	6,705.3	6,675.4	16.7	14.9	-68.35	-214.0	-102.0	237.4	209.2	28.28	8.396	
6,800.0	6,764.7	6,750.0	6,714.1	16.7	14.9	-66.22	-213.6	-79.6	241.1	212.8	28.29	8.524	
6,850.0	6,810.7	6,791.7	6,748.9	16.7	14.9	-64.34	-213.3	-56.6	244.9	216.6	28.28	8.658	
6,900.0	6,855.2	6,834.4	6,783.1	16.8	14.9	-62.57	-212.9	-31.1	248.7	220.4	28.28	8.796	
6,950.0	6,898.0	6,876.7	6,815.3	16.8	15.0	-60.94	-212.5	-3.8	252.5	224.2	28.27	8.933	
7,000.0	6,938.9	6,918.6	6,845.7	16.8	15.0	-59.47	-212.1	25.2	256.2	228.0	28.26	9.066	
7,050.0	6,977.7	6,960.3	6,874.2	16.8	15.1	-58.14	-211.6	55.6	259.8	231.5	28.27	9.189	
7,100.0	7,014.2	7,000.0	6,899.6	16.8	15.3	-57.00	-211.1	86.1	263.1	234.9	28.30	9.300	
7,150.0	7,048.2	7,043.0	6,925.1	16.8	15.6	-55.91	-210.6	120.7	266.3	237.9	28.39	9.380	
7,200.0	7,079.6	7,084.0	6,947.5	16.9	16.0	-54.99	-210.1	155.0	269.1	240.6	28.54	9.429	
7,250.0	7,108.2	7,124.9	6,967.9	16.9	16.4	-54.20	-209.6	190.4	271.7	242.9	28.77	9.442	
7,300.0	7,133.9	7,165.6	6,986.1	17.1	16.9	-53.54	-209.0	226.8	273.9	244.8	29.10	9.413	
7,350.0	7,156.5	7,206.1	7,002.2	17.4	17.4	-53.00	-208.4	264.0	275.7	246.2	29.53	9.337	
7,400.0	7,175.9	7,250.0	7,017.1	18.0	18.0	-52.56	-207.8	305.3	277.2	247.1	30.12	9.204	
7,450.0	7,192.1	7,287.0	7,027.8	18.7	18.6	-52.28	-207.3	340.7	278.3	247.5	30.79	9.038	
7,500.0	7,204.9	7,327.4	7,037.3	19.4	19.3	-52.10	-206.7	379.9	279.0	247.4	31.63	8.821	
7,550.0	7,214.4	7,367.7	7,044.6	20.3	20.0	-52.02	-206.1	419.6	279.2	246.6	32.60	8.565	
7,600.0	7,220.4	7,408.0	7,049.6	21.2	20.7	-52.07	-205.5	459.6	279.1	245.4	33.71	8.279	
7,650.0	7,222.9	7,450.0	7,052.5	22.1	21.5	-52.23	-204.9	501.4	278.5	243.5	34.98	7.962	
7,661.1	7,223.0	7,457.4	7,052.7	22.3	21.7	-52.27	-204.7	508.8	278.3	243.1	35.25	7.895	
7,700.0	7,223.0	7,491.4	7,053.0	23.1	22.3	-52.32	-204.2	542.9	278.1	241.7	36.41	7.638	
7,702.5	7,223.0	7,494.0	7,053.0	23.1	22.4	-52.32	-204.2	545.4	278.1	241.6	36.49	7.621	
7,800.0	7,223.0	7,591.4	7,053.0	25.2	24.4	-52.32	-202.7	642.8	278.1	238.4	39.73	7.000	
7,900.0	7,223.0	7,691.4	7,053.0	27.4	26.7	-52.32	-201.2	742.8	278.1	234.9	43.27	6.428	
8,000.0	7,223.0	7,791.4	7,053.0	29.7	29.0	-52.32	-199.7	842.8	278.1	231.1	46.97	5.921	
8,100.0	7,223.0	7,891.4	7,053.0	32.1	31.4	-52.32	-198.2	942.8	278.1	227.3	50.82	5.473	
8,200.0	7,223.0	7,991.4	7,053.0	34.5	33.9	-52.32	-196.7	1,042.8	278.1	223.3	54.77	5.078	
8,300.0	7,223.0	8,091.4	7,053.0	37.0	36.4	-52.32	-195.2	1,142.8	278.1	219.3	58.80	4.730	
8,400.0	7,223.0	8,191.4	7,053.0	39.6	38.9	-52.32	-193.6	1,242.8	278.1	215.2	62.90	4.421	

CC - Min centre to center distance or convergent point, SF - min separation factor, ES - min ellipse separation

Company:	Synergy Resources	Local Co-ordinate Reference:	Well SRC Wiedeman 12-5-4NCHZ
Project:	Sec.5-T5N-R66W	TVD Reference:	WELL @ 4796.0ft (RKB - 13')
Reference Site:	SRC Wiedeman Pad Sec.5-T5N-R66W	MD Reference:	WELL @ 4796.0ft (RKB - 13')
Site Error:	0.0ft	North Reference:	True
Reference Well:	SRC Wiedeman 12-5-4NCHZ	Survey Calculation Method:	Minimum Curvature
Well Error:	0.0ft	Output errors are at	2.00 sigma
Reference Wellbore	Wellbore #1	Database:	Landmark
Reference Design:	Plan #3 (9-24-14)	Offset TVD Reference:	Offset Datum

Offset Design		SRC Wiedeman Pad Sec.5-T5N-R66W - SRC Wiedeman 12-5-4CHZ - Wellbore #1 - Plan #3 (9-24-14)										Offset Site Error:		0.0 ft		
Survey Program: 0-MWD														Offset Well Error:		0.0 ft
Reference		Offset		Semi Major Axis				Distance						Warning		
Measured Depth	Vertical Depth	Measured Depth	Vertical Depth	Reference	Offset	Highside Toolface	Offset Wellbore Centre	Between Centres	Between Ellipses	Minimum Separation	Separation Factor					
(ft)	(ft)	(ft)	(ft)	(ft)	(ft)	(°)	+N/-S (ft)	+E/-W (ft)	(ft)	(ft)	(ft)					
8,500.0	7,223.0	8,291.4	7,053.0	42.2	41.5	-52.32	-192.1	1,342.8	278.1	211.1	67.06	4.147				
8,600.0	7,223.0	8,391.4	7,053.0	44.8	44.1	-52.32	-190.6	1,442.8	278.1	206.8	71.27	3.902				
8,700.0	7,223.0	8,491.4	7,053.0	47.4	46.7	-52.32	-189.1	1,542.7	278.1	202.6	75.51	3.683				
8,800.0	7,223.0	8,591.4	7,053.0	50.0	49.4	-52.32	-187.6	1,642.7	278.1	198.3	79.79	3.486				
8,900.0	7,223.0	8,691.4	7,053.0	52.7	52.1	-52.32	-186.1	1,742.7	278.1	194.0	84.09	3.307				
9,000.0	7,223.0	8,791.4	7,053.0	55.4	54.8	-52.32	-184.6	1,842.7	278.1	189.7	88.42	3.146				
9,100.0	7,223.0	8,891.4	7,053.0	58.0	57.4	-52.32	-183.1	1,942.7	278.1	185.4	92.76	2.998				
9,200.0	7,223.0	8,991.4	7,053.0	60.7	60.2	-52.32	-181.6	2,042.7	278.1	181.0	97.13	2.863				
9,300.0	7,223.0	9,091.4	7,053.0	63.4	62.9	-52.32	-180.0	2,142.7	278.1	176.6	101.51	2.740				
9,400.0	7,223.0	9,191.4	7,053.0	66.2	65.6	-52.32	-178.5	2,242.7	278.1	172.2	105.90	2.626				
9,500.0	7,223.0	9,291.4	7,053.0	68.9	68.3	-52.32	-177.0	2,342.7	278.1	167.8	110.30	2.521				
9,600.0	7,223.0	9,391.4	7,053.0	71.6	71.0	-52.32	-175.5	2,442.6	278.1	163.4	114.72	2.424				
9,700.0	7,223.0	9,491.4	7,053.0	74.3	73.8	-52.32	-174.0	2,542.6	278.1	159.0	119.14	2.334				
9,800.0	7,223.0	9,591.4	7,053.0	77.1	76.5	-52.32	-172.5	2,642.6	278.1	154.5	123.57	2.251				
9,900.0	7,223.0	9,691.4	7,053.0	79.8	79.3	-52.32	-171.0	2,742.6	278.1	150.1	128.01	2.173				
10,000.0	7,223.0	9,791.4	7,053.0	82.6	82.0	-52.32	-169.5	2,842.6	278.1	145.7	132.46	2.100				
10,100.0	7,223.0	9,891.4	7,053.0	85.3	84.8	-52.32	-167.9	2,942.6	278.1	141.2	136.91	2.031				
10,200.0	7,223.0	9,991.4	7,053.0	88.1	87.5	-52.32	-166.4	3,042.6	278.1	136.7	141.37	1.967				
10,300.0	7,223.0	10,091.4	7,053.0	90.8	90.3	-52.32	-164.9	3,142.6	278.1	132.3	145.83	1.907				
10,400.0	7,223.0	10,191.4	7,053.0	93.6	93.1	-52.32	-163.4	3,242.6	278.1	127.8	150.29	1.850				
10,500.0	7,223.0	10,291.4	7,053.0	96.4	95.8	-52.32	-161.9	3,342.5	278.1	123.4	154.76	1.797				
10,600.0	7,223.0	10,391.4	7,053.0	99.1	98.6	-52.32	-160.4	3,442.5	278.1	118.9	159.24	1.747				
10,700.0	7,223.0	10,491.4	7,053.0	101.9	101.4	-52.32	-158.9	3,542.5	278.1	114.4	163.72	1.699				
10,800.0	7,223.0	10,591.4	7,053.0	104.7	104.1	-52.32	-157.4	3,642.5	278.1	109.9	168.20	1.653				
10,900.0	7,223.0	10,691.4	7,053.0	107.4	106.9	-52.32	-155.9	3,742.5	278.1	105.4	172.68	1.611				
11,000.0	7,223.0	10,791.4	7,053.0	110.2	109.7	-52.32	-154.3	3,842.5	278.1	100.9	177.17	1.570				
11,100.0	7,223.0	10,891.4	7,053.0	113.0	112.5	-52.32	-152.8	3,942.5	278.1	96.5	181.66	1.531				
11,200.0	7,223.0	10,991.4	7,053.0	115.8	115.3	-52.32	-151.3	4,042.5	278.1	92.0	186.15	1.494 Level 3				
11,300.0	7,223.0	11,091.4	7,053.0	118.5	118.0	-52.32	-149.8	4,142.4	278.1	87.5	190.64	1.459 Level 3				
11,400.0	7,223.0	11,191.4	7,053.0	121.3	120.8	-52.32	-148.3	4,242.4	278.1	83.0	195.14	1.425 Level 3				
11,500.0	7,223.0	11,291.4	7,053.0	124.1	123.6	-52.32	-146.8	4,342.4	278.1	78.5	199.63	1.393 Level 3				
11,600.0	7,223.0	11,391.4	7,053.0	126.9	126.4	-52.32	-145.3	4,442.4	278.1	74.0	204.13	1.362 Level 3				
11,700.0	7,223.0	11,491.4	7,053.0	129.7	129.2	-52.32	-143.8	4,542.4	278.1	69.5	208.63	1.333 Level 3				
11,770.2	7,223.0	11,561.7	7,053.0	130.9	131.1	-52.32	-142.7	4,612.6	278.1	66.9	211.23	1.317 Level 3, SF				

Offset Design		SRC Wiedeman Pad Sec.5-T5N-R66W - SRC Wiedeman 21-5-3CHZ - Wellbore #1 - Plan #2 (9-24-14)										Offset Site Error:		0.0 ft
Survey Program: 0-MWD												Offset Well Error:		0.0 ft
Reference		Offset		Semi Major Axis			Distance							
Measured Depth	Vertical Depth	Measured Depth	Vertical Depth	Reference	Offset	Highside Toolface	Offset Wellbore Centre		Between Centres	Between Ellipses	Minimum Separation	Separation Factor	Warning	
(ft)	(ft)	(ft)	(ft)	(ft)	(ft)	(°)	+N/-S (ft)	+E/-W (ft)	(ft)	(ft)	(ft)			
0.0	0.0	0.0	0.0	0.0	0.0	5.75	74.7	7.5	75.1					
100.0	100.0	100.0	100.0	0.1	0.1	5.75	74.7	7.5	75.1	74.8	0.22	333.937		
200.0	200.0	200.0	200.0	0.3	0.3	5.75	74.7	7.5	75.1	74.4	0.67	111.312		
300.0	300.0	300.0	300.0	0.6	0.6	5.75	74.7	7.5	75.1	73.9	1.12	66.787		
400.0	400.0	400.0	400.0	0.8	0.8	5.75	74.7	7.5	75.1	73.5	1.57	47.705		
500.0	500.0	500.0	500.0	1.0	1.0	5.75	74.7	7.5	75.1	73.0	2.02	37.104 CC, ES		
600.0	600.0	597.5	597.5	1.2	1.2	5.48	76.3	7.3	76.7	74.3	2.47	31.090		
700.0	700.0	694.7	694.6	1.5	1.5	4.73	81.2	6.7	81.7	78.8	2.92	28.015		
800.0	800.0	791.5	791.0	1.7	1.7	3.68	89.4	5.7	90.0	86.7	3.37	26.732		
900.0	900.0	887.6	886.5	1.9	1.9	2.49	100.7	4.4	101.7	97.9	3.82	26.604 SF		
1,000.0	1,000.0	985.2	982.9	2.1	2.2	1.34	114.8	2.7	116.1	111.8	4.28	27.097		
1,100.0	1,100.0	1,083.8	1,080.5	2.3	2.5	155.00	129.3	0.9	132.4	127.6	4.72	28.061		
1,200.0	1,199.8	1,181.9	1,177.5	2.5	2.8	154.93	143.8	-0.8	151.7	146.6	5.13	29.607		
1,300.0	1,299.5	1,279.3	1,273.8	2.7	3.1	155.32	158.1	-2.5	174.2	168.7	5.54	31.469		
1,358.5	1,357.5	1,335.9	1,329.8	2.8	3.3	155.67	166.5	-3.5	188.8	183.1	5.78	32.681		
1,400.0	1,398.7	1,376.0	1,369.5	2.9	3.5	156.02	172.4	-4.3	199.6	193.6	5.96	33.512		
1,500.0	1,498.0	1,472.6	1,465.0	3.2	3.8	156.73	186.6	-6.0	225.5	219.1	6.39	35.282		
1,600.0	1,597.2	1,569.1	1,560.4	3.4	4.1	157.29	200.9	-7.7	251.4	244.6	6.83	36.800		
1,700.0	1,696.4	1,665.7	1,655.9	3.7	4.4	157.75	215.1	-9.4	277.3	270.1	7.28	38.097		
1,800.0	1,795.6	1,762.3	1,751.4	4.0	4.8	158.13	229.3	-11.1	303.3	295.6	7.73	39.218		
1,900.0	1,894.8	1,858.8	1,846.9	4.2	5.1	158.44	243.6	-12.8	329.3	321.1	8.19	40.194		
2,000.0	1,994.0	1,955.4	1,942.4	4.5	5.4	158.72	257.8	-14.5	355.2	346.6	8.65	41.049		
2,100.0	2,093.3	2,051.9	2,037.9	4.8	5.7	158.95	272.0	-16.3	381.2	372.1	9.12	41.804		
2,200.0	2,192.5	2,148.5	2,133.4	5.1	6.1	159.16	286.2	-18.0	407.2	397.6	9.59	42.474		
2,300.0	2,291.7	2,245.0	2,228.8	5.4	6.4	159.34	300.5	-19.7	433.2	423.1	10.06	43.072		
2,400.0	2,390.9	2,341.6	2,324.3	5.7	6.8	159.50	314.7	-21.4	459.2	448.6	10.53	43.608		
2,500.0	2,490.1	2,438.1	2,419.8	6.1	7.1	159.64	328.9	-23.1	485.2	474.2	11.00	44.092		
2,600.0	2,589.4	2,534.7	2,515.3	6.4	7.4	159.77	343.2	-24.8	511.2	499.7	11.48	44.530		
2,700.0	2,688.6	2,631.3	2,610.8	6.7	7.8	159.88	357.4	-26.6	537.2	525.2	11.96	44.929		
2,800.0	2,787.8	2,727.8	2,706.3	7.0	8.1	159.99	371.6	-28.3	563.2	550.7	12.43	45.293		
2,900.0	2,887.0	2,824.4	2,801.8	7.3	8.4	160.08	385.9	-30.0	589.2	576.3	12.91	45.626		
3,000.0	2,986.2	2,920.9	2,897.2	7.6	8.8	160.17	400.1	-31.7	615.2	601.8	13.39	45.932		
3,100.0	3,085.4	3,017.5	2,992.7	7.9	9.1	160.25	414.3	-33.4	641.2	627.3	13.87	46.214		
3,200.0	3,184.7	3,114.0	3,088.2	8.3	9.4	160.33	428.6	-35.1	667.2	652.8	14.36	46.475		
3,300.0	3,283.9	3,210.6	3,183.7	8.6	9.8	160.40	442.8	-36.8	693.2	678.4	14.84	46.717		
3,400.0	3,383.1	3,307.1	3,279.2	8.9	10.1	160.46	457.0	-38.6	719.2	703.9	15.32	46.941		
3,500.0	3,482.3	3,403.7	3,374.7	9.2	10.5	160.52	471.3	-40.3	745.2	729.4	15.80	47.150		
3,600.0	3,581.5	3,500.3	3,470.2	9.6	10.8	160.58	485.5	-42.0	771.2	754.9	16.29	47.346		
3,700.0	3,680.8	3,596.8	3,565.6	9.9	11.1	160.63	499.7	-43.7	797.2	780.5	16.77	47.528		
3,800.0	3,780.0	3,693.4	3,661.1	10.2	11.5	160.68	513.9	-45.4	823.2	806.0	17.26	47.699		
3,900.0	3,879.2	3,789.9	3,756.6	10.5	11.8	160.72	528.2	-47.1	849.3	831.5	17.74	47.860		
4,000.0	3,978.4	3,886.5	3,852.1	10.8	12.2	160.76	542.4	-48.8	875.3	857.0	18.23	48.011		
4,100.0	4,077.6	3,983.0	3,947.6	11.2	12.5	160.80	556.6	-50.6	901.3	882.6	18.72	48.153		
4,200.0	4,176.8	4,079.6	4,043.1	11.5	12.8	160.84	570.9	-52.3	927.3	908.1	19.20	48.287		
4,300.0	4,276.1	4,176.1	4,138.6	11.8	13.2	160.88	585.1	-54.0	953.3	933.6	19.69	48.414		
4,400.0	4,375.3	4,272.7	4,234.0	12.2	13.5	160.91	599.3	-55.7	979.3	959.1	20.18	48.534		

SRC Wiedeman Pad Sec.5-T5N-R66W - SRC Wiedeman 21-5-3NBHZ - Wellbore #1 - Plan #3 (9-24-14)													Offset Site Error:	0.0 ft
Survey Program: 0-MWD													Offset Well Error:	0.0 ft
Reference		Offset		Semi Major Axis			Distance							
Measured Depth Depth (ft)	Vertical Depth (ft)	Measured Depth (ft)	Vertical Depth (ft)	Reference (ft)	Offset (ft)	Highside Toolface (°)	Offset Wellbore Centre +N/-S (ft)	+E/-W (ft)	Between Centres (ft)	Between Ellipses (ft)	Minimum Separation (ft)	Separation Factor	Warning	
0.0	0.0	0.0	0.0	0.0	0.0	5.59	59.7	5.8	60.0					
100.0	100.0	100.0	100.0	0.1	0.1	5.59	59.7	5.8	60.0	59.8	0.22	267.072		
200.0	200.0	200.0	200.0	0.3	0.3	5.59	59.7	5.8	60.0	59.4	0.67	89.024		
300.0	300.0	300.0	300.0	0.6	0.6	5.59	59.7	5.8	60.0	58.9	1.12	53.414		
400.0	400.0	400.0	400.0	0.8	0.8	5.59	59.7	5.8	60.0	58.5	1.57	38.153		
500.0	500.0	500.0	500.0	1.0	1.0	5.59	59.7	5.8	60.0	58.0	2.02	29.675		
600.0	600.0	600.0	600.0	1.2	1.2	5.59	59.7	5.8	60.0	57.6	2.47	24.279		
700.0	700.0	700.0	700.0	1.5	1.5	5.59	59.7	5.8	60.0	57.1	2.92	20.544		
800.0	800.0	800.0	800.0	1.7	1.7	5.59	59.7	5.8	60.0	56.7	3.37	17.805		
900.0	900.0	900.0	900.0	1.9	1.9	5.59	59.7	5.8	60.0	56.2	3.82	15.710		
1,000.0	1,000.0	1,000.0	1,000.0	2.1	2.1	5.59	59.7	5.8	60.0	55.8	4.27	14.056	CC, ES	
1,100.0	1,100.0	1,097.9	1,097.9	2.3	2.4	160.03	61.4	5.5	63.3	58.6	4.69	13.497		
1,200.0	1,199.8	1,195.3	1,195.1	2.5	2.6	160.12	66.2	4.4	73.1	68.0	5.09	14.353		
1,300.0	1,299.5	1,291.4	1,290.9	2.7	2.8	160.21	74.2	2.7	89.3	83.8	5.50	16.238		
1,358.5	1,357.5	1,346.8	1,345.9	2.8	2.9	160.24	80.2	1.3	101.7	95.9	5.74	17.723		
1,400.0	1,398.7	1,385.7	1,384.6	2.9	3.0	160.28	85.1	0.3	111.5	105.6	5.91	18.863		
1,500.0	1,498.0	1,481.0	1,478.9	3.2	3.3	160.11	98.5	-2.7	136.8	130.4	6.34	21.569		
1,600.0	1,597.2	1,577.7	1,574.5	3.4	3.5	159.97	112.4	-5.7	162.3	155.5	6.77	23.959		
1,700.0	1,696.4	1,674.4	1,670.1	3.7	3.8	159.87	126.3	-8.8	187.8	180.6	7.21	26.033		
1,800.0	1,795.6	1,771.1	1,765.8	4.0	4.1	159.79	140.2	-11.8	213.3	205.7	7.66	27.845		
1,900.0	1,894.8	1,867.8	1,861.4	4.2	4.4	159.72	154.1	-14.9	238.8	230.7	8.12	29.426		
2,000.0	1,994.0	1,964.5	1,957.1	4.5	4.7	159.67	168.0	-17.9	264.3	255.8	8.57	30.832		
2,100.0	2,093.3	2,061.2	2,052.7	4.8	5.0	159.63	181.9	-21.0	289.8	280.8	9.04	32.078		
2,200.0	2,192.5	2,157.9	2,148.3	5.1	5.3	159.60	195.8	-24.1	315.3	305.8	9.50	33.189		
2,300.0	2,291.7	2,254.6	2,244.0	5.4	5.6	159.57	209.7	-27.1	340.9	330.9	9.97	34.186		
2,400.0	2,390.9	2,351.3	2,339.6	5.7	6.0	159.54	223.6	-30.2	366.4	355.9	10.44	35.084		
2,500.0	2,490.1	2,447.9	2,435.3	6.1	6.3	159.52	237.5	-33.2	391.9	381.0	10.92	35.897		
2,600.0	2,589.4	2,544.6	2,530.9	6.4	6.6	159.50	251.4	-36.3	417.4	406.0	11.39	36.636		
2,700.0	2,688.6	2,641.3	2,626.5	6.7	6.9	159.48	265.3	-39.3	442.9	431.0	11.87	37.309		
2,800.0	2,787.8	2,738.0	2,722.2	7.0	7.3	159.47	279.1	-42.4	468.4	456.1	12.35	37.926		
2,900.0	2,887.0	2,834.7	2,817.8	7.3	7.6	159.45	293.0	-45.4	493.9	481.1	12.83	38.492		
3,000.0	2,986.2	2,931.4	2,913.5	7.6	7.9	159.44	306.9	-48.5	519.4	506.1	13.31	39.013		
3,100.0	3,085.4	3,028.1	3,009.1	7.9	8.2	159.43	320.8	-51.5	544.9	531.1	13.80	39.495		
3,200.0	3,184.7	3,124.8	3,104.7	8.3	8.6	159.42	334.7	-54.6	570.4	556.2	14.28	39.941		
3,300.0	3,283.9	3,221.5	3,200.4	8.6	8.9	159.41	348.6	-57.7	596.0	581.2	14.77	40.355		
3,400.0	3,383.1	3,318.2	3,296.0	8.9	9.2	159.40	362.5	-60.7	621.5	606.2	15.25	40.741		
3,500.0	3,482.3	3,414.9	3,391.7	9.2	9.6	159.40	376.4	-63.8	647.0	631.2	15.74	41.100		
3,600.0	3,581.5	3,511.6	3,487.3	9.6	9.9	159.39	390.3	-66.8	672.5	656.3	16.23	41.437		
3,700.0	3,680.8	3,608.2	3,582.9	9.9	10.2	159.38	404.2	-69.9	698.0	681.3	16.72	41.752		
3,800.0	3,780.0	3,704.9	3,678.6	10.2	10.6	159.37	418.1	-72.9	723.5	706.3	17.21	42.048		
3,900.0	3,879.2	3,801.6	3,774.2	10.5	10.9	159.37	432.0	-76.0	749.0	731.3	17.70	42.325		
4,000.0	3,978.4	3,898.3	3,869.8	10.8	11.2	159.36	445.9	-79.0	774.5	756.3	18.19	42.587		
4,100.0	4,077.6	3,995.0	3,965.5	11.2	11.6	159.36	459.8	-82.1	800.0	781.4	18.68	42.834		
4,200.0	4,176.8	4,091.7	4,061.1	11.5	11.9	159.35	473.7	-85.1	825.5	806.4	19.17	43.067		
4,300.0	4,276.1	4,188.4	4,156.8	11.8	12.2	159.35	487.5	-88.2	851.0	831.4	19.66	43.288		
4,400.0	4,375.3	4,285.1	4,252.4	12.2	12.6	159.34	501.4	-91.2	876.6	856.4	20.15	43.497		
4,500.0	4,474.5	4,381.8	4,348.0	12.5	12.9	159.34	515.3	-94.3	902.1	881.4	20.64	43.695		
4,600.0	4,573.7	4,478.5	4,443.7	12.8	13.2	159.34	529.2	-97.4	927.6	906.4	21.14	43.884		
4,700.0	4,672.9	4,575.2	4,539.3	13.1	13.6	159.33	543.1	-100.4	953.1	931.5	21.63	44.063		
4,800.0	4,772.2	4,699.4	4,662.3	13.5	14.0	159.35	559.8	-104.1	977.8	955.6	22.16	44.117		
4,870.9	4,842.5	4,802.4	4,764.8	13.7	14.2	159.44	569.8	-106.3	992.8	970.2	22.53	44.071		
4,900.0	4,871.4	4,845.2	4,807.5	13.8	14.3	159.52	572.9	-107.0	998.1	975.4	22.69	43.990		

Offset Design		SRC Wiedeman Pad Sec.5-T5N-R66W - SRC Wiedeman 21-5-3NBHZ - Wellbore #1 - Plan #3 (9-24-14)										Offset Site Error:		0.0 ft
Survey Program: 0-MWD												Offset Well Error:		0.0 ft
Reference		Offset		Semi Major Axis			Distance							
Measured Depth	Vertical Depth	Measured Depth	Vertical Depth	Reference	Offset	Highside Toolface	Offset Wellbore Centre		Between Centres	Between Ellipses	Minimum Separation	Separation Factor	Warning	
(ft)	(ft)	(ft)	(ft)	(ft)	(ft)	(°)	+N/-S (ft)	+E/-W (ft)	(ft)	(ft)	(ft)			
8,800.0	7,223.0	8,700.6	7,223.0	50.0	48.6	-90.00	592.0	1,638.8	999.7	901.4	98.24	10.176		
8,900.0	7,223.0	8,800.6	7,223.0	52.7	51.2	-90.00	592.7	1,738.8	998.9	895.4	103.55	9.647		
9,000.0	7,223.0	8,900.6	7,223.0	55.4	53.9	-90.00	593.4	1,838.8	998.1	889.2	108.89	9.166		
9,100.0	7,223.0	9,000.6	7,223.0	58.0	56.6	-90.00	594.2	1,938.8	997.3	883.1	114.26	8.729		
9,200.0	7,223.0	9,100.6	7,223.0	60.7	59.2	-90.00	594.9	2,038.8	996.6	876.9	119.64	8.329		
9,300.0	7,223.0	9,200.6	7,223.0	63.4	61.9	-90.00	595.6	2,138.8	995.8	870.7	125.05	7.963		
9,400.0	7,223.0	9,300.6	7,223.0	66.2	64.6	-90.00	596.3	2,238.8	995.0	864.5	130.48	7.626		
9,500.0	7,223.0	9,400.6	7,223.0	68.9	67.3	-90.00	597.1	2,338.7	994.2	858.3	135.92	7.315		
9,600.0	7,223.0	9,500.6	7,223.0	71.6	70.0	-90.00	597.8	2,438.7	993.4	852.0	141.37	7.027		
9,700.0	7,223.0	9,600.6	7,223.0	74.3	72.8	-90.00	598.5	2,538.7	992.6	845.8	146.84	6.760		
9,800.0	7,223.0	9,700.6	7,223.0	77.1	75.5	-90.00	599.3	2,638.7	991.8	839.5	152.31	6.512		
9,900.0	7,223.0	9,800.6	7,223.0	79.8	78.2	-90.00	600.0	2,738.7	991.1	833.3	157.80	6.280		
10,000.0	7,223.0	9,900.6	7,223.0	82.6	81.0	-90.00	600.7	2,838.7	990.3	827.0	163.30	6.064		
10,100.0	7,223.0	10,000.6	7,223.0	85.3	83.7	-90.00	601.4	2,938.7	989.5	820.7	168.80	5.862		
10,200.0	7,223.0	10,100.6	7,223.0	88.1	86.4	-90.00	602.2	3,038.7	988.7	814.4	174.31	5.672		
10,300.0	7,223.0	10,200.5	7,223.0	90.8	89.2	-90.00	602.9	3,138.7	987.9	808.1	179.82	5.494		
10,400.0	7,223.0	10,300.5	7,223.0	93.6	92.0	-90.00	603.6	3,238.7	987.1	801.8	185.35	5.326		
10,500.0	7,223.0	10,400.5	7,223.0	96.4	94.7	-90.00	604.3	3,338.7	986.4	795.5	190.87	5.168		
10,600.0	7,223.0	10,500.5	7,223.0	99.1	97.5	-90.00	605.1	3,438.7	985.6	789.2	196.40	5.018		
10,700.0	7,223.0	10,600.5	7,223.0	101.9	100.2	-90.00	605.8	3,538.7	984.8	782.9	201.94	4.877		
10,800.0	7,223.0	10,700.5	7,223.0	104.7	103.0	-90.00	606.5	3,638.7	984.0	776.5	207.48	4.743		
10,900.0	7,223.0	10,800.5	7,223.0	107.4	105.8	-90.00	607.3	3,738.7	983.2	770.2	213.03	4.616		
11,000.0	7,223.0	10,900.5	7,223.0	110.2	108.5	-90.00	608.0	3,838.7	982.4	763.9	218.57	4.495		
11,100.0	7,223.0	11,000.5	7,223.0	113.0	111.3	-90.00	608.7	3,938.7	981.7	757.5	224.12	4.380		
11,200.0	7,223.0	11,100.5	7,223.0	115.8	114.1	-90.00	609.4	4,038.7	980.9	751.2	229.68	4.271		
11,300.0	7,223.0	11,200.5	7,223.0	118.5	116.9	-90.00	610.2	4,138.6	980.1	744.9	235.23	4.166		
11,400.0	7,223.0	11,300.5	7,223.0	121.3	119.6	-90.00	610.9	4,238.6	979.3	738.5	240.79	4.067		
11,500.0	7,223.0	11,400.5	7,223.0	124.1	122.4	-90.00	611.6	4,338.6	978.5	732.2	246.36	3.972		
11,600.0	7,223.0	11,500.5	7,223.0	126.9	125.2	-90.00	612.4	4,438.6	977.7	725.8	251.92	3.881		
11,700.0	7,223.0	11,600.5	7,223.0	129.7	128.0	-90.00	613.1	4,538.6	976.9	719.5	257.49	3.794		
11,770.2	7,223.0	11,670.8	7,223.0	130.9	129.9	-90.00	613.6	4,608.9	976.4	715.7	260.70	3.745 SF		

SRC Wiedeman Pad Sec.5-T5N-R66W - SRC Wiedeman 22-5-4CHZ - Wellbore #1 - Plan #2 (9-02-14)													Offset Site Error:	0.0 ft
Survey Program: 0-MWD													Offset Well Error:	0.0 ft
Reference		Offset		Semi Major Axis			Distance							
Measured Depth (ft)	Vertical Depth (ft)	Measured Depth (ft)	Vertical Depth (ft)	Reference (ft)	Offset (ft)	Highside Toolface (°)	Offset Wellbore Centre +N/-S (ft)	+E/-W (ft)	Between Centres (ft)	Between Ellipses (ft)	Minimum Separation (ft)	Separation Factor	Warning	
0.0	0.0	0.0	0.0	0.0	0.0	-174.68	-29.9	-2.8	30.0					
100.0	100.0	100.0	100.0	0.1	0.1	-174.68	-29.9	-2.8	30.0	29.8	0.22	133.468		
200.0	200.0	200.0	200.0	0.3	0.3	-174.68	-29.9	-2.8	30.0	29.3	0.67	44.489		
300.0	300.0	300.0	300.0	0.6	0.6	-174.68	-29.9	-2.8	30.0	28.9	1.12	26.694		
400.0	400.0	400.0	400.0	0.8	0.8	-174.68	-29.9	-2.8	30.0	28.4	1.57	19.067		
500.0	500.0	500.0	500.0	1.0	1.0	-174.68	-29.9	-2.8	30.0	28.0	2.02	14.830	CC, ES	
600.0	600.0	598.9	598.9	1.2	1.2	-174.13	-31.5	-3.2	31.7	29.3	2.44	12.968		
700.0	700.0	697.6	697.5	1.5	1.4	-172.80	-36.4	-4.6	36.8	34.0	2.86	12.888		
800.0	800.0	795.9	795.4	1.7	1.6	-171.25	-44.6	-6.9	45.3	42.1	3.28	13.806		
900.0	900.0	893.4	892.2	1.9	1.8	-169.86	-55.9	-10.0	57.3	53.6	3.73	15.366		
1,000.0	1,000.0	990.1	987.7	2.1	2.1	-168.75	-70.2	-14.0	72.6	68.4	4.19	17.341		
1,100.0	1,100.0	1,087.5	1,083.5	2.3	2.4	-13.70	-87.3	-18.7	89.1	84.5	4.57	19.472		
1,200.0	1,199.8	1,186.6	1,180.8	2.5	2.8	-13.67	-105.0	-23.6	102.6	97.6	4.97	20.644		
1,300.0	1,299.5	1,286.1	1,278.6	2.7	3.2	-14.08	-122.8	-28.5	112.7	107.3	5.38	20.955		
1,358.5	1,357.5	1,344.4	1,335.9	2.8	3.4	-14.48	-133.2	-31.4	117.1	111.5	5.63	20.813		
1,400.0	1,398.7	1,385.8	1,376.6	2.9	3.6	-14.82	-140.6	-33.5	119.8	114.0	5.81	20.620		
1,500.0	1,498.0	1,485.6	1,474.6	3.2	4.0	-15.57	-158.4	-38.4	126.3	120.0	6.26	20.174		
1,600.0	1,597.2	1,585.3	1,572.7	3.4	4.4	-16.24	-176.3	-43.4	132.8	126.1	6.72	19.764		
1,700.0	1,696.4	1,685.1	1,670.7	3.7	4.8	-16.86	-194.1	-48.3	139.4	132.2	7.19	19.383		
1,800.0	1,795.6	1,784.9	1,768.8	4.0	5.2	-17.41	-211.9	-53.2	145.9	138.2	7.67	19.033		
1,900.0	1,894.8	1,884.7	1,866.8	4.2	5.6	-17.92	-229.8	-58.2	152.5	144.3	8.15	18.711		
2,000.0	1,994.0	1,984.4	1,964.9	4.5	6.0	-18.39	-247.6	-63.1	159.1	150.4	8.64	18.415		
2,100.0	2,093.3	2,084.2	2,062.9	4.8	6.4	-18.82	-265.5	-68.1	165.7	156.5	9.13	18.142		
2,200.0	2,192.5	2,184.0	2,160.9	5.1	6.8	-19.22	-283.3	-73.0	172.3	162.6	9.63	17.890		
2,300.0	2,291.7	2,283.8	2,259.0	5.4	7.2	-19.58	-301.1	-78.0	178.9	168.7	10.13	17.657		
2,400.0	2,390.9	2,383.5	2,357.0	5.7	7.6	-19.93	-319.0	-82.9	185.5	174.8	10.63	17.441		
2,500.0	2,490.1	2,483.3	2,455.1	6.1	8.0	-20.24	-336.8	-87.9	192.1	181.0	11.14	17.241		
2,600.0	2,589.4	2,583.1	2,553.1	6.4	8.5	-20.54	-354.7	-92.8	198.7	187.1	11.65	17.054		
2,700.0	2,688.6	2,682.9	2,651.2	6.7	8.9	-20.82	-372.5	-97.7	205.4	193.2	12.17	16.881		
2,800.0	2,787.8	2,782.6	2,749.2	7.0	9.3	-21.08	-390.3	-102.7	212.0	199.3	12.68	16.719		
2,900.0	2,887.0	2,882.4	2,847.2	7.3	9.7	-21.32	-408.2	-107.6	218.6	205.4	13.20	16.567		
3,000.0	2,986.2	2,982.2	2,945.3	7.6	10.1	-21.55	-426.0	-112.6	225.3	211.6	13.72	16.426		
3,100.0	3,085.4	3,082.0	3,043.3	7.9	10.5	-21.77	-443.9	-117.5	231.9	217.7	14.24	16.292		
3,200.0	3,184.7	3,181.7	3,141.4	8.3	11.0	-21.97	-461.7	-122.5	238.6	223.8	14.76	16.167		
3,300.0	3,283.9	3,281.5	3,239.4	8.6	11.4	-22.17	-479.5	-127.4	245.2	230.0	15.28	16.049		
3,400.0	3,383.1	3,381.3	3,337.5	8.9	11.8	-22.35	-497.4	-132.3	251.9	236.1	15.80	15.938		
3,500.0	3,482.3	3,481.1	3,435.5	9.2	12.2	-22.53	-515.2	-137.3	258.6	242.2	16.33	15.833		
3,600.0	3,581.5	3,580.8	3,533.5	9.6	12.6	-22.69	-533.1	-142.2	265.2	248.4	16.86	15.734		
3,700.0	3,680.8	3,680.6	3,631.6	9.9	13.1	-22.85	-550.9	-147.2	271.9	254.5	17.38	15.640		
3,800.0	3,780.0	3,780.4	3,729.6	10.2	13.5	-23.00	-568.7	-152.1	278.5	260.6	17.91	15.551		
3,900.0	3,879.2	3,880.2	3,827.7	10.5	13.9	-23.14	-586.6	-157.1	285.2	266.8	18.44	15.466		
4,000.0	3,978.4	3,979.9	3,925.7	10.8	14.3	-23.28	-604.4	-162.0	291.9	272.9	18.97	15.386		
4,100.0	4,077.6	4,079.7	4,023.8	11.2	14.7	-23.41	-622.3	-167.0	298.5	279.0	19.50	15.309		
4,200.0	4,176.8	4,179.5	4,121.8	11.5	15.2	-23.53	-640.1	-171.9	305.2	285.2	20.03	15.236		
4,300.0	4,276.1	4,279.3	4,219.8	11.8	15.6	-23.65	-657.9	-176.8	311.9	291.3	20.56	15.167		
4,400.0	4,375.3	4,379.0	4,317.9	12.2	16.0	-23.76	-675.8	-181.8	318.6	297.5	21.10	15.100		
4,500.0	4,474.5	4,478.8	4,415.9	12.5	16.4	-23.87	-693.6	-186.7	325.2	303.6	21.63	15.037		
4,600.0	4,573.7	4,578.6	4,514.0	12.8	16.8	-23.98	-711.5	-191.7	331.9	309.8	22.16	14.976		
4,700.0	4,672.9	4,678.4	4,612.0	13.1	17.3	-24.08	-729.3	-196.6	338.6	315.9	22.70	14.918		
4,800.0	4,772.2	4,778.1	4,710.1	13.5	17.7	-24.18	-747.1	-201.6	345.3	322.0	23.23	14.862		
4,870.9	4,842.5	4,848.8	4,779.5	13.7	18.0	-24.24	-759.8	-205.1	350.0	326.4	23.61	14.824		
4,900.0	4,871.4	4,877.9	4,808.1	13.8	18.1	-24.28	-765.0	-206.5	352.1	328.3	23.76	14.821		

SRC Wiedeman Pad Sec.5-T5N-R66W - SRC Wiedeman 22-5-4CHZ - Wellbore #1 - Plan #2 (9-02-14)													Offset Site Error:	0.0 ft
Survey Program: 0-MWD													Offset Well Error:	0.0 ft
Reference		Offset		Semi Major Axis			Distance							
Measured Depth (ft)	Vertical Depth (ft)	Measured Depth (ft)	Vertical Depth (ft)	Reference (ft)	Offset (ft)	Highside Toolface (°)	Offset Wellbore Centre +N/-S (ft)	+E/-W (ft)	Between Centres (ft)	Between Ellipses (ft)	Minimum Separation (ft)	Separation Factor	Warning	
5,000.0	4,970.9	4,977.5	4,905.9	14.0	18.5	-24.26	-782.8	-211.4	361.3	337.1	24.20	14.927		
5,100.0	5,070.7	5,076.7	5,003.4	14.2	18.9	-24.05	-800.5	-216.4	373.6	349.0	24.60	15.190		
5,200.0	5,170.7	5,175.4	5,100.4	14.3	19.3	-23.69	-818.2	-221.2	389.2	364.2	24.94	15.603		
5,229.3	5,200.0	5,204.3	5,128.8	14.4	19.5	-177.95	-823.3	-222.7	394.3	361.1	33.21	11.874		
5,300.0	5,270.7	5,273.7	5,197.0	14.5	19.8	-177.52	-835.7	-226.1	407.1	373.5	33.65	12.100		
5,400.0	5,370.7	5,372.0	5,293.6	14.7	20.2	-176.96	-853.3	-231.0	425.2	391.0	34.24	12.418		
5,500.0	5,470.7	5,470.2	5,390.1	14.8	20.6	-176.44	-870.9	-235.9	443.4	408.5	34.84	12.726		
5,600.0	5,570.7	5,572.0	5,490.1	14.9	21.0	-175.95	-889.0	-240.9	461.5	426.0	35.43	13.024		
5,700.0	5,670.7	5,689.6	5,606.3	15.1	21.3	-175.50	-906.9	-245.8	477.0	441.0	35.94	13.271		
5,800.0	5,770.7	5,808.7	5,724.5	15.3	21.6	-175.19	-920.3	-249.5	488.4	452.1	36.38	13.426		
5,900.0	5,870.7	5,928.7	5,844.1	15.4	21.8	-175.00	-929.0	-252.0	495.8	459.1	36.76	13.488		
6,000.0	5,970.7	6,049.2	5,964.6	15.6	22.0	-174.91	-932.9	-253.0	499.1	462.0	37.10	13.454		
6,100.0	6,070.7	6,155.3	6,070.7	15.7	22.1	-174.91	-933.1	-253.1	499.3	461.9	37.38	13.357		
6,200.0	6,170.7	6,255.3	6,170.7	15.9	22.2	-174.91	-933.1	-253.1	499.3	461.7	37.65	13.262		
6,300.0	6,270.7	6,355.3	6,270.7	16.0	22.3	-174.91	-933.1	-253.1	499.3	461.4	37.92	13.168		
6,400.0	6,370.7	6,455.3	6,370.7	16.2	22.4	-174.91	-933.1	-253.1	499.3	461.1	38.19	13.074		
6,500.0	6,470.7	6,555.3	6,470.7	16.4	22.5	-174.91	-933.1	-253.1	499.3	460.8	38.47	12.981		
6,536.1	6,506.8	6,591.4	6,506.8	16.4	22.6	-174.91	-933.1	-253.1	499.3	460.7	38.57	12.947		
6,550.0	6,520.7	6,606.3	6,521.7	16.5	22.6	95.96	-933.1	-253.0	499.3	469.3	29.98	16.653		
6,600.0	6,570.6	6,660.2	6,575.5	16.5	22.6	95.94	-933.0	-249.9	499.3	469.2	30.13	16.571		
6,650.0	6,620.2	6,714.0	6,628.9	16.6	22.7	95.90	-932.9	-242.8	499.3	469.0	30.26	16.501		
6,700.0	6,669.2	6,767.9	6,681.5	16.6	22.7	95.82	-932.7	-231.7	499.2	468.8	30.36	16.441		
6,750.0	6,717.5	6,821.6	6,733.1	16.7	22.7	95.71	-932.5	-216.7	499.1	468.6	30.45	16.389		
6,800.0	6,764.7	6,875.3	6,783.4	16.7	22.7	95.57	-932.2	-197.9	499.0	468.4	30.53	16.341		
6,850.0	6,810.7	6,928.9	6,832.0	16.7	22.7	95.40	-931.9	-175.5	498.8	468.2	30.62	16.291		
6,900.0	6,855.2	6,982.3	6,878.7	16.8	22.7	95.21	-931.5	-149.6	498.7	467.9	30.72	16.233		
6,950.0	6,898.0	7,035.5	6,923.2	16.8	22.7	94.99	-931.0	-120.3	498.5	467.6	30.85	16.158		
7,000.0	6,938.9	7,088.6	6,965.3	16.8	22.7	94.74	-930.6	-88.0	498.3	467.3	31.03	16.058		
7,050.0	6,977.7	7,141.5	7,004.7	16.8	22.7	94.47	-930.0	-52.7	498.1	466.8	31.28	15.922		
7,100.0	7,014.2	7,194.2	7,041.3	16.8	22.7	94.18	-929.4	-14.8	497.9	466.3	31.63	15.742		
7,150.0	7,048.2	7,246.7	7,074.8	16.8	22.7	93.86	-928.8	25.6	497.7	465.6	32.09	15.510		
7,200.0	7,079.6	7,299.0	7,105.2	16.9	22.7	93.53	-928.2	68.1	497.5	464.8	32.69	15.221		
7,250.0	7,108.2	7,351.0	7,132.3	16.9	22.8	93.18	-927.5	112.5	497.3	463.9	33.44	14.874		
7,300.0	7,133.9	7,402.8	7,156.0	17.1	22.8	92.81	-926.8	158.5	497.2	462.8	34.35	14.472		
7,350.0	7,156.5	7,454.3	7,176.2	17.4	22.9	92.43	-926.1	205.9	497.0	461.6	35.44	14.024		
7,400.0	7,175.9	7,505.6	7,192.9	18.0	23.1	92.04	-925.3	254.4	496.9	460.2	36.70	13.540		
7,450.0	7,192.1	7,556.6	7,206.0	18.7	23.3	91.64	-924.6	303.6	496.8	458.6	38.11	13.034		
7,500.0	7,204.9	7,607.4	7,215.6	19.4	23.6	91.24	-923.8	353.5	496.7	457.0	39.68	12.518		
7,550.0	7,214.4	7,657.9	7,221.5	20.3	24.0	90.82	-923.1	403.6	496.6	455.2	41.37	12.003		
7,600.0	7,220.4	7,708.2	7,223.9	21.2	24.6	90.41	-922.3	453.8	496.5	453.4	43.18	11.500		
7,650.0	7,222.9	7,758.1	7,224.0	22.1	25.2	90.13	-921.5	503.8	496.5	451.4	45.09	11.013		
7,661.1	7,223.0	7,769.3	7,224.0	22.3	25.4	90.12	-921.4	514.9	496.5	451.0	45.52	10.909		
7,700.0	7,223.0	7,808.1	7,224.0	23.1	26.0	90.12	-920.8	553.8	496.5	449.5	47.04	10.555		
7,800.0	7,223.0	7,908.1	7,224.0	25.2	27.8	90.12	-919.3	653.7	496.5	445.3	51.21	9.696		
7,900.0	7,223.0	8,008.1	7,224.0	27.4	29.8	90.12	-917.7	753.7	496.5	440.9	55.63	8.926		
8,000.0	7,223.0	8,108.1	7,224.0	29.7	32.0	90.12	-916.2	853.7	496.5	436.2	60.24	8.241		
8,100.0	7,223.0	8,208.1	7,224.0	32.1	34.3	90.12	-914.7	953.7	496.5	431.5	65.02	7.636		
8,200.0	7,223.0	8,308.1	7,224.0	34.5	36.6	90.12	-913.2	1,053.7	496.5	426.5	69.92	7.101		
8,300.0	7,223.0	8,408.1	7,224.0	37.0	39.1	90.12	-911.6	1,153.7	496.5	421.5	74.92	6.627		
8,400.0	7,223.0	8,508.1	7,224.0	39.6	41.5	90.12	-910.1	1,253.7	496.4	416.4	80.00	6.206		
8,500.0	7,223.0	8,608.1	7,224.0	42.2	44.0	90.12	-908.6	1,353.7	496.4	411.3	85.14	5.831		
8,600.0	7,223.0	8,708.1	7,224.0	44.8	46.6	90.12	-907.1	1,453.6	496.4	406.1	90.34	5.495		

Offset Design SRC Wiedeman Pad Sec.5-T5N-R66W - SRC Wiedeman 22-5-4CHZ - Wellbore #1 - Plan #2 (9-02-14)												Offset Site Error: 0.0 ft	
Survey Program: 0-MWD												Offset Well Error: 0.0 ft	
Reference		Offset		Semi Major Axis			Distance						Warning
Measured Depth (ft)	Vertical Depth (ft)	Measured Depth (ft)	Vertical Depth (ft)	Reference (ft)	Offset (ft)	Highside Toolface (°)	Offset Wellbore Centre +N/-S (ft)	+E/-W (ft)	Between Centres (ft)	Between Ellipses (ft)	Minimum Separation (ft)	Separation Factor	
8,700.0	7,223.0	8,808.1	7,224.0	47.4	49.2	90.12	-905.5	1,553.6	496.4	400.8	95.59	5.193	
8,800.0	7,223.0	8,908.1	7,224.0	50.0	51.8	90.12	-904.0	1,653.6	496.4	395.5	100.88	4.921	
8,900.0	7,223.0	9,008.1	7,224.0	52.7	54.4	90.12	-902.5	1,753.6	496.4	390.2	106.20	4.674	
9,000.0	7,223.0	9,108.1	7,224.0	55.4	57.0	90.12	-901.0	1,853.6	496.4	384.8	111.55	4.450	
9,100.0	7,223.0	9,208.1	7,224.0	58.0	59.7	90.12	-899.5	1,953.6	496.4	379.4	116.92	4.245	
9,200.0	7,223.0	9,308.1	7,224.0	60.7	62.3	90.12	-897.9	2,053.6	496.3	374.0	122.32	4.058	
9,300.0	7,223.0	9,408.1	7,224.0	63.4	65.0	90.12	-896.4	2,153.6	496.3	368.6	127.73	3.886	
9,400.0	7,223.0	9,508.1	7,224.0	66.2	67.7	90.12	-894.9	2,253.6	496.3	363.2	133.16	3.727	
9,500.0	7,223.0	9,608.1	7,224.0	68.9	70.4	90.12	-893.4	2,353.5	496.3	357.7	138.60	3.581	
9,600.0	7,223.0	9,708.1	7,224.0	71.6	73.1	90.12	-891.8	2,453.5	496.3	352.2	144.06	3.445	
9,700.0	7,223.0	9,808.1	7,224.0	74.3	75.8	90.12	-890.3	2,553.5	496.3	346.8	149.53	3.319	
9,800.0	7,223.0	9,908.1	7,224.0	77.1	78.5	90.12	-888.8	2,653.5	496.3	341.3	155.01	3.202	
9,900.0	7,223.0	10,008.1	7,224.0	79.8	81.3	90.12	-887.3	2,753.5	496.3	335.8	160.50	3.092	
10,000.0	7,223.0	10,108.1	7,224.0	82.6	84.0	90.12	-885.7	2,853.5	496.3	330.3	165.99	2.990	
10,100.0	7,223.0	10,208.1	7,224.0	85.3	86.7	90.12	-884.2	2,953.5	496.2	324.7	171.49	2.894	
10,200.0	7,223.0	10,308.1	7,224.0	88.1	89.5	90.12	-882.7	3,053.5	496.2	319.2	177.00	2.804	
10,300.0	7,223.0	10,408.1	7,224.0	90.8	92.2	90.12	-881.2	3,153.5	496.2	313.7	182.52	2.719	
10,400.0	7,223.0	10,508.1	7,224.0	93.6	95.0	90.12	-879.6	3,253.4	496.2	308.2	188.04	2.639	
10,500.0	7,223.0	10,608.1	7,224.0	96.4	97.7	90.12	-878.1	3,353.4	496.2	302.6	193.57	2.563	
10,600.0	7,223.0	10,708.1	7,224.0	99.1	100.5	90.12	-876.6	3,453.4	496.2	297.1	199.10	2.492	
10,700.0	7,223.0	10,808.1	7,224.0	101.9	103.2	90.12	-875.1	3,553.4	496.2	291.5	204.64	2.425	
10,800.0	7,223.0	10,908.1	7,224.0	104.7	106.0	90.12	-873.6	3,653.4	496.2	286.0	210.18	2.361	
10,900.0	7,223.0	11,008.1	7,224.0	107.4	108.7	90.12	-872.0	3,753.4	496.2	280.4	215.72	2.300	
11,000.0	7,223.0	11,108.1	7,224.0	110.2	111.5	90.12	-870.5	3,853.4	496.1	274.9	221.27	2.242	
11,100.0	7,223.0	11,208.1	7,224.0	113.0	114.3	90.12	-869.0	3,953.4	496.1	269.3	226.82	2.187	
11,200.0	7,223.0	11,308.1	7,224.0	115.8	117.0	90.12	-867.5	4,053.3	496.1	263.7	232.37	2.135	
11,300.0	7,223.0	11,408.1	7,224.0	118.5	119.8	90.12	-865.9	4,153.3	496.1	258.2	237.93	2.085	
11,400.0	7,223.0	11,508.1	7,224.0	121.3	122.6	90.12	-864.4	4,253.3	496.1	252.6	243.48	2.037	
11,500.0	7,223.0	11,608.1	7,224.0	124.1	125.3	90.12	-862.9	4,353.3	496.1	247.0	249.04	1.992	
11,600.0	7,223.0	11,708.1	7,224.0	126.9	128.1	90.12	-861.4	4,453.3	496.1	241.5	254.61	1.948	
11,700.0	7,223.0	11,808.1	7,224.0	129.7	130.9	90.12	-859.8	4,553.3	496.1	235.9	260.17	1.907	
11,709.6	7,223.0	11,817.8	7,224.0	129.8	131.2	90.12	-859.7	4,562.9	496.1	235.4	260.61	1.903	
11,770.2	7,223.0	11,832.8	7,224.0	130.9	131.6	90.12	-859.5	4,577.9	498.1	236.0	262.12	1.900 SF	

Company:	Synergy Resources	Local Co-ordinate Reference:	Well SRC Wiedeman 12-5-4NCHZ
Project:	Sec.5-T5N-R66W	TVD Reference:	WELL @ 4796.0ft (RKB - 13')
Reference Site:	SRC Wiedeman Pad Sec.5-T5N-R66W	MD Reference:	WELL @ 4796.0ft (RKB - 13')
Site Error:	0.0ft	North Reference:	True
Reference Well:	SRC Wiedeman 12-5-4NCHZ	Survey Calculation Method:	Minimum Curvature
Well Error:	0.0ft	Output errors are at	2.00 sigma
Reference Wellbore	Wellbore #1	Database:	Landmark
Reference Design:	Plan #3 (9-24-14)	Offset TVD Reference:	Offset Datum

Offset Design												Offset Site Error:	0.0 ft
Survey Program: 0-MWD												Offset Well Error:	0.0 ft
Reference		Offset		Semi Major Axis			Distance						
Measured Depth (ft)	Vertical Depth (ft)	Measured Depth (ft)	Vertical Depth (ft)	Reference (ft)	Offset (ft)	Highside Toolface (°)	Offset Wellbore Centre +N/-S (ft)	+E/-W (ft)	Between Centres (ft)	Between Ellipses (ft)	Minimum Separation (ft)	Separation Factor	Warning
0.0	0.0	0.0	0.0	0.0	0.0	-174.68	-14.9	-1.4	15.0	15.0	0.00	N/A	
100.0	100.0	100.0	100.0	0.1	0.1	-174.68	-14.9	-1.4	15.0	14.8	0.22	66.761	
200.0	200.0	200.0	200.0	0.3	0.3	-174.68	-14.9	-1.4	15.0	14.3	0.67	22.254	
300.0	300.0	300.0	300.0	0.6	0.6	-174.68	-14.9	-1.4	15.0	13.9	1.12	13.352	
400.0	400.0	400.0	400.0	0.8	0.8	-174.68	-14.9	-1.4	15.0	13.4	1.57	9.537	
500.0	500.0	500.0	500.0	1.0	1.0	-174.68	-14.9	-1.4	15.0	13.0	2.02	7.418	
600.0	600.0	600.0	600.0	1.2	1.2	-174.68	-14.9	-1.4	15.0	12.5	2.47	6.069	
700.0	700.0	700.0	700.0	1.5	1.5	-174.68	-14.9	-1.4	15.0	12.1	2.92	5.135	
800.0	800.0	800.0	800.0	1.7	1.7	-174.68	-14.9	-1.4	15.0	11.6	3.37	4.451 CC, ES	
900.0	900.0	899.5	899.4	1.9	1.9	-173.36	-16.6	-1.9	16.7	12.9	3.79	4.403	
1,000.0	1,000.0	998.7	998.5	2.1	2.1	-170.64	-21.5	-3.5	21.8	17.6	4.20	5.198	
1,100.0	1,100.0	1,097.6	1,097.0	2.3	2.3	-14.54	-29.6	-6.2	28.7	24.1	4.58	6.265	
1,200.0	1,199.8	1,196.2	1,195.0	2.5	2.5	-14.21	-40.9	-9.9	35.7	30.7	4.95	7.202	
1,300.0	1,299.5	1,295.0	1,292.6	2.7	2.7	-14.58	-55.4	-14.7	42.5	37.2	5.33	7.974	
1,358.5	1,357.5	1,353.4	1,350.2	2.8	2.9	-15.18	-64.4	-17.7	45.6	40.0	5.56	8.189	
1,400.0	1,398.7	1,394.9	1,391.1	2.9	3.0	-15.71	-70.9	-19.8	47.3	41.6	5.74	8.248	
1,500.0	1,498.0	1,494.8	1,489.6	3.2	3.3	-16.83	-86.4	-24.9	51.5	45.4	6.16	8.360	
1,600.0	1,597.2	1,594.7	1,588.2	3.4	3.7	-17.78	-101.9	-30.0	55.8	49.2	6.60	8.442	
1,700.0	1,696.4	1,694.6	1,686.8	3.7	4.0	-18.60	-117.5	-35.1	60.0	52.9	7.06	8.503	
1,800.0	1,795.6	1,794.5	1,785.3	4.0	4.3	-19.30	-133.0	-40.2	64.3	56.7	7.52	8.547	
1,900.0	1,894.8	1,894.4	1,883.9	4.2	4.7	-19.92	-148.5	-45.3	68.5	60.5	7.99	8.578	
2,000.0	1,994.0	1,994.3	1,982.5	4.5	5.1	-20.47	-164.0	-50.4	72.8	64.3	8.47	8.599	
2,100.0	2,093.3	2,094.2	2,081.0	4.8	5.4	-20.96	-179.5	-55.5	77.1	68.1	8.95	8.612	
2,200.0	2,192.5	2,194.1	2,179.6	5.1	5.8	-21.39	-195.1	-60.6	81.4	71.9	9.44	8.620	
2,300.0	2,291.7	2,294.0	2,278.1	5.4	6.2	-21.78	-210.6	-65.7	85.7	75.7	9.93	8.624	
2,400.0	2,390.9	2,393.9	2,376.7	5.7	6.5	-22.14	-226.1	-70.8	89.9	79.5	10.43	8.624	
2,500.0	2,490.1	2,493.8	2,475.3	6.1	6.9	-22.46	-241.6	-75.9	94.2	83.3	10.93	8.621	
2,600.0	2,589.4	2,593.8	2,573.8	6.4	7.3	-22.75	-257.2	-81.0	98.5	87.1	11.44	8.617	
2,700.0	2,688.6	2,693.7	2,672.4	6.7	7.6	-23.02	-272.7	-86.1	102.8	90.9	11.94	8.611	
2,800.0	2,787.8	2,793.6	2,770.9	7.0	8.0	-23.27	-288.2	-91.2	107.1	94.7	12.45	8.605	
2,900.0	2,887.0	2,893.5	2,869.5	7.3	8.4	-23.50	-303.7	-96.3	111.5	98.5	12.96	8.597	
3,000.0	2,986.2	2,993.4	2,968.1	7.6	8.8	-23.71	-319.2	-101.4	115.8	102.3	13.48	8.589	
3,100.0	3,085.4	3,093.3	3,066.6	7.9	9.2	-23.91	-334.8	-106.5	120.1	106.1	13.99	8.580	
3,200.0	3,184.7	3,193.2	3,165.2	8.3	9.5	-24.09	-350.3	-111.6	124.4	109.9	14.51	8.572	
3,300.0	3,283.9	3,293.1	3,263.8	8.6	9.9	-24.26	-365.8	-116.7	128.7	113.7	15.03	8.563	
3,400.0	3,383.1	3,393.0	3,362.3	8.9	10.3	-24.42	-381.3	-121.8	133.0	117.5	15.55	8.554	
3,500.0	3,482.3	3,492.9	3,460.9	9.2	10.7	-24.57	-396.9	-126.9	137.3	121.2	16.07	8.545	
3,600.0	3,581.5	3,592.8	3,559.4	9.6	11.1	-24.71	-412.4	-132.0	141.6	125.0	16.59	8.536	
3,700.0	3,680.8	3,692.7	3,658.0	9.9	11.4	-24.84	-427.9	-137.1	145.9	128.8	17.12	8.527	
3,800.0	3,780.0	3,792.6	3,756.6	10.2	11.8	-24.97	-443.4	-142.2	150.3	132.6	17.64	8.518	
3,900.0	3,879.2	3,892.5	3,855.1	10.5	12.2	-25.09	-458.9	-147.3	154.6	136.4	18.16	8.509	
4,000.0	3,978.4	3,992.4	3,953.7	10.8	12.6	-25.20	-474.5	-152.4	158.9	140.2	18.69	8.501	
4,100.0	4,077.6	4,092.3	4,052.2	11.2	13.0	-25.30	-490.0	-157.5	163.2	144.0	19.22	8.493	
4,200.0	4,176.8	4,192.3	4,150.8	11.5	13.4	-25.40	-505.5	-162.6	167.5	147.8	19.74	8.485	
4,300.0	4,276.1	4,292.2	4,249.4	11.8	13.7	-25.50	-521.0	-167.7	171.8	151.6	20.27	8.477	
4,400.0	4,375.3	4,392.1	4,347.9	12.2	14.1	-25.59	-536.5	-172.8	176.2	155.4	20.80	8.469	
4,500.0	4,474.5	4,492.0	4,446.5	12.5	14.5	-25.67	-552.1	-177.9	180.5	159.1	21.33	8.462	
4,600.0	4,573.7	4,591.9	4,545.0	12.8	14.9	-25.75	-567.6	-183.0	184.8	162.9	21.86	8.454	
4,700.0	4,672.9	4,691.8	4,643.6	13.1	15.3	-25.83	-583.1	-188.1	189.1	166.7	22.39	8.447	
4,800.0	4,772.2	4,791.7	4,742.2	13.5	15.7	-25.91	-598.6	-193.2	193.4	170.5	22.92	8.440	
4,870.9	4,842.5	4,862.5	4,812.0	13.7	15.9	-25.96	-609.6	-196.8	196.5	173.2	23.29	8.435	
4,900.0	4,871.4	4,891.6	4,840.7	13.8	16.0	-25.97	-614.2	-198.3	197.9	174.4	23.44	8.442	

CC - Min centre to center distance or convergent point, SF - min separation factor, ES - min ellipse separation

SRC Wiedeman Pad Sec.5-T5N-R66W - SRC Wiedeman 22-5-4NBHZ - Wellbore #1 - Plan #3 (9-24-1)												Offset Site Error:	0.0 ft
Survey Program: 0-MWD												Offset Well Error:	0.0 ft
Reference		Offset		Semi Major Axis			Distance						
Measured Depth (ft)	Vertical Depth (ft)	Measured Depth (ft)	Vertical Depth (ft)	Reference (ft)	Offset (ft)	Highside Toolface (°)	Offset Wellbore Centre +N/-S (ft)	+E/-W (ft)	Between Centres (ft)	Between Ellipses (ft)	Minimum Separation (ft)	Separation Factor	Warning
5,000.0	4,970.9	4,991.3	4,939.1	14.0	16.4	-25.76	-629.7	-203.4	204.7	180.8	23.87	8.573	
5,100.0	5,070.7	5,090.8	5,037.3	14.2	16.8	-25.19	-645.1	-208.5	214.6	190.4	24.24	8.854	
5,200.0	5,170.7	5,189.9	5,135.0	14.3	17.2	-24.34	-660.5	-213.6	227.8	203.2	24.55	9.278	
5,229.3	5,200.0	5,218.8	5,163.6	14.4	17.3	-178.44	-665.0	-215.0	232.2	201.3	30.98	7.497	
5,300.0	5,270.7	5,288.6	5,232.4	14.5	17.6	-177.66	-675.8	-218.6	243.3	211.9	31.41	7.747	
5,400.0	5,370.7	5,396.7	5,339.3	14.7	17.9	-176.70	-690.7	-223.5	257.3	225.4	31.91	8.064	
5,500.0	5,470.7	5,505.8	5,447.8	14.8	18.1	-176.06	-701.8	-227.1	267.7	235.3	32.34	8.277	
5,600.0	5,570.7	5,615.7	5,557.4	14.9	18.3	-175.67	-709.0	-229.5	274.3	241.6	32.71	8.386	
5,700.0	5,670.7	5,725.9	5,667.6	15.1	18.5	-175.50	-712.2	-230.5	277.3	244.3	33.05	8.392	
5,800.0	5,770.7	5,829.0	5,770.7	15.3	18.6	-175.49	-712.3	-230.6	277.5	244.1	33.34	8.322	
5,900.0	5,870.7	5,929.0	5,870.7	15.4	18.7	-175.49	-712.3	-230.6	277.5	243.8	33.62	8.253	
6,000.0	5,970.7	6,029.0	5,970.7	15.6	18.8	-175.49	-712.3	-230.6	277.5	243.6	33.90	8.185	
6,100.0	6,070.7	6,129.0	6,070.7	15.7	19.0	-175.49	-712.3	-230.6	277.5	243.3	34.19	8.116	
6,200.0	6,170.7	6,229.0	6,170.7	15.9	19.1	-175.49	-712.3	-230.6	277.5	243.0	34.48	8.048	
6,300.0	6,270.7	6,329.0	6,270.7	16.0	19.2	-175.49	-712.3	-230.6	277.5	242.7	34.77	7.980	
6,400.0	6,370.7	6,430.2	6,371.9	16.2	19.4	-175.67	-712.3	-229.7	277.4	242.3	35.06	7.913	
6,500.0	6,470.7	6,532.3	6,473.2	16.4	19.5	-178.20	-712.1	-217.5	276.6	241.4	35.19	7.859	
6,536.1	6,506.8	6,568.1	6,508.1	16.4	19.5	-179.79	-712.0	-209.8	276.3	241.1	35.19	7.852	
6,550.0	6,520.7	6,581.6	6,521.2	16.5	19.5	90.41	-712.0	-206.4	276.3	246.6	29.65	9.316	
6,558.6	6,529.3	6,590.0	6,529.3	16.5	19.5	90.00	-711.9	-204.2	276.2	246.5	29.71	9.298	
6,600.0	6,570.6	6,629.9	6,567.4	16.5	19.5	88.02	-711.8	-192.4	276.4	246.4	29.98	9.220	
6,650.0	6,620.2	6,677.5	6,611.9	16.6	19.5	85.65	-711.5	-175.7	277.1	246.8	30.29	9.147	
6,700.0	6,669.2	6,724.3	6,654.5	16.6	19.5	83.34	-711.2	-156.3	278.2	247.7	30.58	9.100	
6,750.0	6,717.5	6,770.5	6,695.3	16.7	19.5	81.09	-710.9	-134.4	279.8	249.0	30.82	9.077	
6,800.0	6,764.7	6,816.1	6,734.0	16.7	19.5	78.91	-710.5	-110.4	281.8	250.7	31.03	9.080	
6,850.0	6,810.7	6,861.1	6,770.6	16.7	19.5	76.81	-710.1	-84.3	284.1	252.9	31.20	9.106	
6,900.0	6,855.2	6,905.6	6,805.2	16.8	19.5	74.82	-709.7	-56.2	286.7	255.3	31.32	9.152	
6,950.0	6,898.0	6,950.0	6,837.8	16.8	19.5	72.91	-709.2	-26.2	289.5	258.1	31.42	9.214	
7,000.0	6,938.9	6,993.1	6,867.7	16.8	19.6	71.14	-708.8	4.9	292.5	261.0	31.50	9.286	
7,050.0	6,977.7	7,036.2	6,895.7	16.8	19.6	69.46	-708.3	37.7	295.6	264.0	31.57	9.362	
7,100.0	7,014.2	7,079.0	6,921.4	16.8	19.6	67.91	-707.7	71.8	298.7	267.0	31.69	9.426	
7,150.0	7,048.2	7,121.3	6,944.8	16.8	19.6	66.47	-707.2	107.1	301.9	270.1	31.83	9.485	
7,200.0	7,079.6	7,163.4	6,966.0	16.9	19.7	65.14	-706.7	143.4	305.0	273.0	32.04	9.521	
7,250.0	7,108.2	7,205.2	6,984.9	16.9	19.8	63.94	-706.1	180.7	308.0	275.7	32.34	9.525	
7,300.0	7,133.9	7,250.0	7,002.7	17.1	19.9	62.78	-705.5	221.8	310.9	278.1	32.79	9.484	
7,350.0	7,156.5	7,287.9	7,015.7	17.4	20.1	61.88	-704.9	257.4	313.6	280.3	33.34	9.407	
7,400.0	7,175.9	7,329.0	7,027.7	18.0	20.3	61.02	-704.3	296.7	316.1	282.0	34.07	9.279	
7,450.0	7,192.1	7,369.9	7,037.3	18.7	20.7	60.28	-703.7	336.4	318.3	283.4	34.95	9.108	
7,500.0	7,204.9	7,410.6	7,044.6	19.4	21.2	59.64	-703.1	376.5	320.3	284.3	36.01	8.895	
7,550.0	7,214.4	7,450.0	7,049.6	20.3	21.8	59.13	-702.5	415.5	322.0	284.8	37.21	8.652	
7,600.0	7,220.4	7,491.7	7,052.4	21.2	22.4	58.70	-701.9	457.1	323.3	284.7	38.61	8.373	
7,650.0	7,222.9	7,535.0	7,053.0	22.1	23.2	58.40	-701.2	500.4	324.3	284.1	40.20	8.068	
7,661.1	7,223.0	7,546.1	7,053.0	22.3	23.4	58.39	-701.1	511.5	324.3	283.7	40.61	7.987	
7,700.0	7,223.0	7,585.0	7,053.0	23.1	24.1	58.39	-700.5	550.4	324.3	282.4	41.92	7.737	
7,800.0	7,223.0	7,685.0	7,053.0	25.2	26.2	58.39	-699.0	650.4	324.3	278.8	45.49	7.130	
7,900.0	7,223.0	7,785.0	7,053.0	27.4	28.3	58.39	-697.4	750.4	324.3	275.0	49.27	6.582	
8,000.0	7,223.0	7,885.0	7,053.0	29.7	30.6	58.39	-695.9	850.3	324.3	271.1	53.23	6.093	
8,100.0	7,223.0	7,985.0	7,053.0	32.1	33.0	58.39	-694.4	950.3	324.3	267.0	57.32	5.658	
8,200.0	7,223.0	8,085.0	7,053.0	34.5	35.4	58.38	-692.9	1,050.3	324.3	262.8	61.51	5.272	
8,300.0	7,223.0	8,185.0	7,053.0	37.0	37.9	58.38	-691.4	1,150.3	324.3	258.5	65.80	4.929	
8,400.0	7,223.0	8,285.0	7,053.0	39.6	40.4	58.38	-689.9	1,250.3	324.3	254.1	70.16	4.622	
8,500.0	7,223.0	8,385.0	7,053.0	42.2	42.9	58.38	-688.3	1,350.3	324.3	249.7	74.57	4.349	

Company:	Synergy Resources	Local Co-ordinate Reference:	Well SRC Wiedeman 12-5-4NCHZ
Project:	Sec.5-T5N-R66W	TVD Reference:	WELL @ 4796.0ft (RKB - 13')
Reference Site:	SRC Wiedeman Pad Sec.5-T5N-R66W	MD Reference:	WELL @ 4796.0ft (RKB - 13')
Site Error:	0.0ft	North Reference:	True
Reference Well:	SRC Wiedeman 12-5-4NCHZ	Survey Calculation Method:	Minimum Curvature
Well Error:	0.0ft	Output errors are at	2.00 sigma
Reference Wellbore	Wellbore #1	Database:	Landmark
Reference Design:	Plan #3 (9-24-14)	Offset TVD Reference:	Offset Datum

Offset Design												Offset Site Error:	0.0 ft
Survey Program: 0-MWD												Offset Well Error:	0.0 ft
Reference		Offset		Semi Major Axis			Distance						Warning
Measured Depth (ft)	Vertical Depth (ft)	Measured Depth (ft)	Vertical Depth (ft)	Reference (ft)	Offset (ft)	Highside Toolface (°)	Offset Wellbore Centre +N/-S (ft)	+E/-W (ft)	Between Centres (ft)	Between Ellipses (ft)	Minimum Separation (ft)	Separation Factor	
8,600.0	7,223.0	8,485.0	7,053.0	44.8	45.5	58.38	-686.8	1,450.3	324.3	245.2	79.03	4.103	
8,700.0	7,223.0	8,585.0	7,053.0	47.4	48.1	58.38	-685.3	1,550.3	324.3	240.7	83.54	3.882	
8,800.0	7,223.0	8,685.0	7,053.0	50.0	50.7	58.38	-683.8	1,650.3	324.3	236.2	88.08	3.682	
8,900.0	7,223.0	8,785.0	7,053.0	52.7	53.4	58.38	-682.3	1,750.2	324.3	231.6	92.65	3.500	
9,000.0	7,223.0	8,885.0	7,053.0	55.4	56.1	58.38	-680.7	1,850.2	324.3	227.0	97.24	3.334	
9,100.0	7,223.0	8,985.0	7,053.0	58.0	58.7	58.38	-679.2	1,950.2	324.2	222.4	101.86	3.183	
9,200.0	7,223.0	9,085.0	7,053.0	60.7	61.4	58.38	-677.7	2,050.2	324.2	217.7	106.50	3.045	
9,300.0	7,223.0	9,185.0	7,053.0	63.4	64.1	58.38	-676.2	2,150.2	324.2	213.1	111.15	2.917	
9,400.0	7,223.0	9,285.0	7,053.0	66.2	66.8	58.38	-674.7	2,250.2	324.2	208.4	115.82	2.800	
9,500.0	7,223.0	9,385.0	7,053.0	68.9	69.5	58.38	-673.2	2,350.2	324.2	203.7	120.50	2.691	
9,600.0	7,223.0	9,485.0	7,053.0	71.6	72.3	58.38	-671.6	2,450.2	324.2	199.0	125.19	2.590	
9,700.0	7,223.0	9,585.0	7,053.0	74.3	75.0	58.38	-670.1	2,550.2	324.2	194.3	129.89	2.496	
9,800.0	7,223.0	9,685.0	7,053.0	77.1	77.7	58.38	-668.6	2,650.1	324.2	189.6	134.60	2.409	
9,900.0	7,223.0	9,785.0	7,053.0	79.8	80.5	58.37	-667.1	2,750.1	324.2	184.9	139.32	2.327	
10,000.0	7,223.0	9,885.0	7,053.0	82.6	83.2	58.37	-665.6	2,850.1	324.2	180.1	144.05	2.251	
10,100.0	7,223.0	9,985.0	7,053.0	85.3	85.9	58.37	-664.0	2,950.1	324.2	175.4	148.79	2.179	
10,200.0	7,223.0	10,085.0	7,053.0	88.1	88.7	58.37	-662.5	3,050.1	324.2	170.7	153.53	2.112	
10,300.0	7,223.0	10,185.0	7,053.0	90.8	91.4	58.37	-661.0	3,150.1	324.2	165.9	158.27	2.048	
10,400.0	7,223.0	10,285.0	7,053.0	93.6	94.2	58.37	-659.5	3,250.1	324.2	161.2	163.02	1.989	
10,500.0	7,223.0	10,385.0	7,053.0	96.4	97.0	58.37	-658.0	3,350.1	324.2	156.4	167.78	1.932	
10,600.0	7,223.0	10,485.0	7,053.0	99.1	99.7	58.37	-656.5	3,450.0	324.2	151.6	172.54	1.879	
10,700.0	7,223.0	10,585.0	7,053.0	101.9	102.5	58.37	-654.9	3,550.0	324.2	146.9	177.30	1.828	
10,800.0	7,223.0	10,685.0	7,053.0	104.7	105.2	58.37	-653.4	3,650.0	324.2	142.1	182.07	1.780	
10,900.0	7,223.0	10,785.0	7,053.0	107.4	108.0	58.37	-651.9	3,750.0	324.2	137.3	186.84	1.735	
11,000.0	7,223.0	10,885.0	7,053.0	110.2	110.8	58.37	-650.4	3,850.0	324.1	132.5	191.61	1.692	
11,100.0	7,223.0	10,985.0	7,053.0	113.0	113.6	58.37	-648.9	3,950.0	324.1	127.8	196.39	1.651	
11,200.0	7,223.0	11,085.0	7,053.0	115.8	116.3	58.37	-647.3	4,050.0	324.1	123.0	201.16	1.611	
11,300.0	7,223.0	11,185.0	7,053.0	118.5	119.1	58.37	-645.8	4,150.0	324.1	118.2	205.95	1.574	
11,400.0	7,223.0	11,285.0	7,053.0	121.3	121.9	58.37	-644.3	4,250.0	324.1	113.4	210.73	1.538	
11,500.0	7,223.0	11,385.0	7,053.0	124.1	124.7	58.37	-642.8	4,349.9	324.1	108.6	215.51	1.504	
11,600.0	7,223.0	11,485.0	7,053.0	126.9	127.4	58.36	-641.3	4,449.9	324.1	103.8	220.30	1.471 Level 3	
11,700.0	7,223.0	11,585.0	7,053.0	129.7	130.2	58.36	-639.8	4,549.9	324.1	99.0	225.09	1.440 Level 3	
11,740.4	7,223.0	11,625.4	7,053.0	130.4	131.3	58.36	-639.1	4,590.3	324.1	97.4	226.68	1.430 Level 3	
11,770.2	7,223.0	11,632.1	7,053.0	130.9	131.5	58.36	-639.0	4,597.1	324.9	97.6	227.30	1.429 Level 3, SF	

CC - Min centre to center distance or convergent point, SF - min separation factor, ES - min ellipse separation

Company:	Synergy Resources	Local Co-ordinate Reference:	Well SRC Wiedeman 12-5-4NCHZ
Project:	Sec.5-T5N-R66W	TVD Reference:	WELL @ 4796.0ft (RKB - 13')
Reference Site:	SRC Wiedeman Pad Sec.5-T5N-R66W	MD Reference:	WELL @ 4796.0ft (RKB - 13')
Site Error:	0.0ft	North Reference:	True
Reference Well:	SRC Wiedeman 12-5-4NCHZ	Survey Calculation Method:	Minimum Curvature
Well Error:	0.0ft	Output errors are at	2.00 sigma
Reference Wellbore	Wellbore #1	Database:	Landmark
Reference Design:	Plan #3 (9-24-14)	Offset TVD Reference:	Offset Datum

Offset Design												Offset Site Error:	0.0 ft
Survey Program: 0-MWD												Offset Well Error:	0.0 ft
Reference		Offset		Semi Major Axis			Distance						
Measured Depth (ft)	Vertical Depth (ft)	Measured Depth (ft)	Vertical Depth (ft)	Reference (ft)	Offset (ft)	Highside Toolface (°)	Offset Wellbore Centre +N/-S (ft)	+E/-W (ft)	Between Centres (ft)	Between Ellipses (ft)	Minimum Separation (ft)	Separation Factor	Warning
5,000.0	4,970.9	4,980.3	4,970.9	14.0	11.4	159.67	138.5	-152.0	568.4	545.6	22.74	24.996	
5,100.0	5,070.7	5,080.1	5,070.7	14.2	11.6	159.92	138.5	-152.0	574.3	551.1	23.15	24.804	
5,200.0	5,170.7	5,180.1	5,170.7	14.3	11.8	160.04	138.5	-152.0	576.9	553.3	23.54	24.505	
5,229.3	5,200.0	5,209.4	5,200.0	14.4	11.9	5.64	138.5	-152.0	577.0	551.4	25.55	22.579	
5,300.0	5,270.7	5,280.1	5,270.7	14.5	12.0	5.64	138.5	-152.0	577.0	551.2	25.82	22.345	
5,400.0	5,370.7	5,380.1	5,370.7	14.7	12.2	5.64	138.5	-152.0	577.0	550.8	26.19	22.031	
5,500.0	5,470.7	5,480.1	5,470.7	14.8	12.4	5.64	138.5	-152.0	577.0	550.4	26.56	21.725	
5,600.0	5,570.7	5,580.1	5,570.7	14.9	12.7	5.64	138.5	-152.0	577.0	550.1	26.93	21.426	
5,700.0	5,670.7	5,680.1	5,670.7	15.1	12.9	5.64	138.5	-152.0	577.0	549.7	27.30	21.133	
5,800.0	5,770.7	5,780.1	5,770.7	15.3	13.1	5.64	138.5	-152.0	577.0	549.3	27.68	20.846	
5,900.0	5,870.7	5,880.1	5,870.7	15.4	13.3	5.64	138.5	-152.0	577.0	548.9	28.06	20.566	
6,000.0	5,970.7	5,980.1	5,970.7	15.6	13.5	5.64	138.5	-152.0	577.0	548.6	28.43	20.292	
6,100.0	6,070.7	6,080.1	6,070.7	15.7	13.7	5.64	138.5	-152.0	577.0	548.2	28.82	20.024	
6,200.0	6,170.7	6,180.1	6,170.7	15.9	13.9	5.64	138.5	-152.0	577.0	547.8	29.20	19.761	
6,300.0	6,270.7	6,280.1	6,270.7	16.0	14.2	5.64	138.5	-152.0	577.0	547.4	29.58	19.505	
6,400.0	6,370.7	6,380.1	6,370.7	16.2	14.4	5.64	138.5	-152.0	577.0	547.0	29.97	19.254	
6,500.0	6,470.7	6,480.1	6,470.7	16.4	14.6	5.64	138.5	-152.0	577.0	546.6	30.36	19.008	
6,536.1	6,506.8	6,516.2	6,506.8	16.4	14.7	5.64	138.5	-152.0	577.0	546.5	30.50	18.920	
6,550.0	6,520.7	6,529.0	6,519.6	16.5	14.7	-83.49	138.5	-151.9	577.0	548.0	28.98	19.908	
6,600.0	6,570.6	6,575.0	6,565.6	16.5	14.8	-83.51	138.5	-149.6	577.0	547.8	29.15	19.795	
6,650.0	6,620.2	6,621.1	6,611.4	16.6	14.9	-83.56	138.5	-144.4	576.9	547.6	29.29	19.695	
6,700.0	6,669.2	6,667.3	6,656.8	16.6	14.9	-83.65	138.6	-136.2	576.7	547.3	29.42	19.604	
6,750.0	6,717.5	6,713.5	6,701.6	16.7	15.0	-83.75	138.7	-125.0	576.5	547.0	29.53	19.520	
6,800.0	6,764.7	6,759.7	6,745.7	16.7	15.1	-83.89	138.8	-111.0	576.2	546.6	29.64	19.438	
6,850.0	6,810.7	6,806.0	6,788.8	16.7	15.1	-84.06	138.9	-94.2	575.9	546.2	29.76	19.353	
6,900.0	6,855.2	6,852.4	6,830.8	16.8	15.2	-84.25	139.0	-74.5	575.6	545.7	29.89	19.259	
6,950.0	6,898.0	6,900.0	6,872.5	16.8	15.3	-84.47	139.2	-51.6	575.2	545.2	30.04	19.145	
7,000.0	6,938.9	6,945.6	6,911.0	16.8	15.3	-84.71	139.4	-27.1	574.8	544.5	30.24	19.006	
7,050.0	6,977.7	6,992.4	6,948.7	16.8	15.5	-84.98	139.6	0.5	574.3	543.8	30.50	18.830	
7,100.0	7,014.2	7,039.3	6,984.7	16.8	15.6	-85.27	139.8	30.7	573.8	543.0	30.84	18.607	
7,150.0	7,048.2	7,086.4	7,018.7	16.8	15.8	-85.58	140.1	63.2	573.3	542.1	31.28	18.331	
7,200.0	7,079.6	7,133.7	7,050.6	16.9	16.1	-85.92	140.3	98.1	572.8	541.0	31.83	17.994	
7,250.0	7,108.2	7,181.2	7,080.3	16.9	16.4	-86.27	140.6	135.1	572.3	539.8	32.52	17.597	
7,300.0	7,133.9	7,228.8	7,107.5	17.1	16.8	-86.65	140.9	174.2	571.8	538.4	33.36	17.139	
7,350.0	7,156.5	7,276.7	7,132.3	17.4	17.3	-87.04	141.2	215.2	571.2	536.9	34.35	16.628	
7,400.0	7,175.9	7,324.9	7,154.3	18.0	17.8	-87.44	141.5	258.0	570.7	535.2	35.51	16.073	
7,450.0	7,192.1	7,373.2	7,173.4	18.7	18.4	-87.86	141.8	302.4	570.2	533.4	36.82	15.486	
7,500.0	7,204.9	7,421.8	7,189.7	19.4	19.1	-88.29	142.2	348.2	569.7	531.4	38.28	14.880	
7,550.0	7,214.4	7,470.7	7,202.8	20.3	19.9	-88.73	142.5	395.3	569.2	529.3	39.89	14.269	
7,600.0	7,220.4	7,519.8	7,212.7	21.2	20.7	-89.18	142.9	443.4	568.7	527.1	41.62	13.664	
7,650.0	7,222.9	7,569.3	7,219.4	22.1	21.6	-89.64	143.2	492.4	568.3	524.9	43.46	13.076	
7,661.1	7,223.0	7,580.3	7,220.4	22.3	21.8	-89.74	143.3	503.4	568.2	524.3	43.89	12.948	
7,700.0	7,223.0	7,619.1	7,222.7	23.1	22.6	-89.97	143.6	542.0	567.9	522.5	45.39	12.511	
7,800.0	7,223.0	7,719.0	7,223.0	25.2	24.6	-90.00	144.3	642.0	567.1	517.6	49.50	11.457	
7,900.0	7,223.0	7,819.0	7,223.0	27.4	26.7	-90.00	145.1	742.0	566.4	512.5	53.87	10.514	
8,000.0	7,223.0	7,919.0	7,223.0	29.7	29.0	-90.00	145.8	842.0	565.6	507.1	58.45	9.676	
8,100.0	7,223.0	8,019.0	7,223.0	32.1	31.3	-90.00	146.5	942.0	564.8	501.6	63.20	8.937	
8,200.0	7,223.0	8,119.0	7,223.0	34.5	33.8	-90.00	147.3	1,042.0	564.1	496.0	68.08	8.285	
8,300.0	7,223.0	8,219.0	7,223.0	37.0	36.2	-90.00	148.0	1,142.0	563.3	490.2	73.07	7.709	
8,400.0	7,223.0	8,319.0	7,223.0	39.6	38.8	-90.00	148.8	1,242.0	562.5	484.4	78.14	7.199	
8,500.0	7,223.0	8,419.0	7,223.0	42.2	41.3	-90.00	149.5	1,342.0	561.7	478.5	83.28	6.745	
8,600.0	7,223.0	8,519.0	7,223.0	44.8	43.9	-90.00	150.2	1,441.9	561.0	472.5	88.47	6.340	

CC - Min centre to center distance or convergent point, SF - min separation factor, ES - min ellipse separation

Offset Design		SRC Wiedeman Pad Sec.5-T5N-R66W - SRC Wiedeman A-5-3NBHZ - Wellbore #1 - Plan #3 (9-24-14)											Offset Site Error:		0.0 ft
Survey Program: 0-MWD													Offset Well Error:		0.0 ft
Reference		Offset		Semi Major Axis			Distance							Warning	
Measured Depth (ft)	Vertical Depth (ft)	Measured Depth (ft)	Vertical Depth (ft)	Reference (ft)	Offset (ft)	Highside Toolface (°)	Offset Wellbore Centre +N/-S (ft)	+E/-W (ft)	Between Centres (ft)	Between Ellipses (ft)	Minimum Separation (ft)	Separation Factor			
8,700.0	7,223.0	8,619.0	7,223.0	47.4	46.5	-90.00	151.0	1,541.9	560.2	466.5	93.72	5.977			
8,800.0	7,223.0	8,719.0	7,223.0	50.0	49.1	-90.00	151.7	1,641.9	559.4	460.4	99.01	5.650			
8,900.0	7,223.0	8,819.0	7,223.0	52.7	51.8	-90.00	152.4	1,741.9	558.6	454.3	104.33	5.355			
9,000.0	7,223.0	8,919.0	7,223.0	55.4	54.5	-90.00	153.2	1,841.9	557.9	448.2	109.68	5.086			
9,100.0	7,223.0	9,019.0	7,223.0	58.0	57.2	-90.00	153.9	1,941.9	557.1	442.0	115.05	4.842			
9,200.0	7,223.0	9,119.0	7,223.0	60.7	59.8	-90.00	154.7	2,041.9	556.3	435.9	120.45	4.619			
9,300.0	7,223.0	9,219.0	7,223.0	63.4	62.6	-90.00	155.4	2,141.9	555.5	429.7	125.86	4.414			
9,400.0	7,223.0	9,319.0	7,223.0	66.2	65.3	-90.00	156.1	2,241.9	554.8	423.5	131.29	4.225			
9,500.0	7,223.0	9,419.0	7,223.0	68.9	68.0	-90.00	156.9	2,341.9	554.0	417.2	136.74	4.051			
9,600.0	7,223.0	9,519.0	7,223.0	71.6	70.7	-90.00	157.6	2,441.9	553.2	411.0	142.20	3.890			
9,700.0	7,223.0	9,619.0	7,223.0	74.3	73.4	-90.00	158.3	2,541.9	552.4	404.8	147.67	3.741			
9,800.0	7,223.0	9,719.0	7,223.0	77.1	76.2	-90.00	159.1	2,641.9	551.7	398.5	153.15	3.602			
9,900.0	7,223.0	9,819.0	7,223.0	79.8	78.9	-90.00	159.8	2,741.9	550.9	392.2	158.64	3.473			
10,000.0	7,223.0	9,919.0	7,223.0	82.6	81.7	-90.00	160.6	2,841.9	550.1	386.0	164.14	3.352			
10,100.0	7,223.0	10,019.0	7,223.0	85.3	84.4	-90.00	161.3	2,941.9	549.3	379.7	169.64	3.238			
10,200.0	7,223.0	10,119.0	7,223.0	88.1	87.2	-90.00	162.0	3,041.9	548.6	373.4	175.16	3.132			
10,300.0	7,223.0	10,219.0	7,223.0	90.8	89.9	-90.00	162.8	3,141.8	547.8	367.1	180.68	3.032			
10,400.0	7,223.0	10,319.0	7,223.0	93.6	92.7	-90.00	163.5	3,241.8	547.0	360.8	186.20	2.938			
10,500.0	7,223.0	10,419.0	7,223.0	96.4	95.5	-90.00	164.2	3,341.8	546.2	354.5	191.73	2.849			
10,600.0	7,223.0	10,519.0	7,223.0	99.1	98.2	-90.00	165.0	3,441.8	545.5	348.2	197.26	2.765			
10,700.0	7,223.0	10,619.0	7,223.0	101.9	101.0	-90.00	165.7	3,541.8	544.7	341.9	202.80	2.686			
10,800.0	7,223.0	10,719.0	7,223.0	104.7	103.8	-90.00	166.5	3,641.8	543.9	335.6	208.35	2.611			
10,900.0	7,223.0	10,818.9	7,223.0	107.4	106.5	-90.00	167.2	3,741.8	543.1	329.3	213.89	2.539			
11,000.0	7,223.0	10,918.9	7,223.0	110.2	109.3	-90.00	167.9	3,841.8	542.4	322.9	219.44	2.472			
11,100.0	7,223.0	11,018.9	7,223.0	113.0	112.1	-90.00	168.7	3,941.8	541.6	316.6	224.99	2.407			
11,200.0	7,223.0	11,118.9	7,223.0	115.8	114.9	-90.00	169.4	4,041.8	540.8	310.3	230.55	2.346			
11,300.0	7,223.0	11,218.9	7,223.0	118.5	117.6	-90.00	170.1	4,141.8	540.1	303.9	236.11	2.287			
11,400.0	7,223.0	11,318.9	7,223.0	121.3	120.4	-90.00	170.9	4,241.8	539.3	297.6	241.67	2.231			
11,500.0	7,223.0	11,418.9	7,223.0	124.1	123.2	-90.00	171.6	4,341.8	538.5	291.3	247.23	2.178			
11,600.0	7,223.0	11,518.9	7,223.0	126.9	126.0	-90.00	172.4	4,441.8	537.7	284.9	252.80	2.127			
11,700.0	7,223.0	11,618.9	7,223.0	129.7	128.8	-90.00	173.1	4,541.8	537.0	278.6	258.36	2.078			
11,770.2	7,223.0	11,689.2	7,223.0	130.9	130.7	-90.00	173.6	4,612.0	536.4	274.8	261.58	2.051	SF		

Company:	Synergy Resources	Local Co-ordinate Reference:	Well SRC Wiedeman 12-5-4NCHZ
Project:	Sec.5-T5N-R66W	TVD Reference:	WELL @ 4796.0ft (RKB - 13')
Reference Site:	SRC Wiedeman Pad Sec.5-T5N-R66W	MD Reference:	WELL @ 4796.0ft (RKB - 13')
Site Error:	0.0ft	North Reference:	True
Reference Well:	SRC Wiedeman 12-5-4NCHZ	Survey Calculation Method:	Minimum Curvature
Well Error:	0.0ft	Output errors are at	2.00 sigma
Reference Wellbore	Wellbore #1	Database:	Landmark
Reference Design:	Plan #3 (9-24-14)	Offset TVD Reference:	Offset Datum

Reference Depths are relative to WELL @ 4796.0ft (RKB - 13')

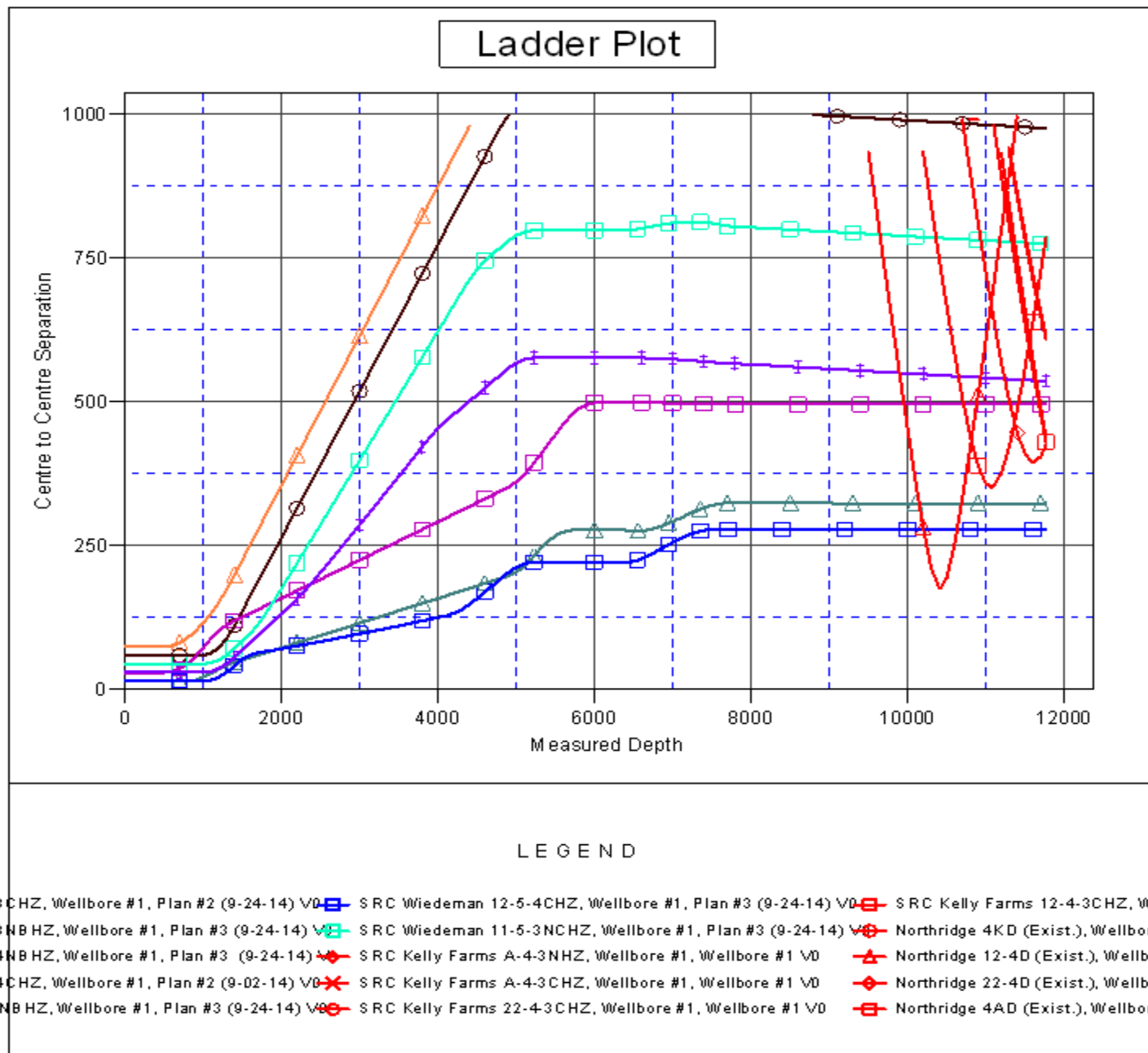
Offset Depths are relative to Offset Datum

Central Meridian is -105.500000 °

Coordinates are relative to: SRC Wiedeman 12-5-4NCHZ

Coordinate System is US State Plane 1983, Colorado Northern Zone

Grid Convergence at Surface is: 0.45°



Company: Synergy Resources
Project: Sec.5-T5N-R66W
Reference Site: SRC Wiedeman Pad Sec.5-T5N-R66W
Site Error: 0.0ft
Reference Well: SRC Wiedeman 12-5-4NCHZ
Well Error: 0.0ft
Reference Wellbore: Wellbore #1
Reference Design: Plan #3 (9-24-14)

Local Co-ordinate Reference: Well SRC Wiedeman 12-5-4NCHZ
TVD Reference: WELL @ 4796.0ft (RKB - 13')
MD Reference: WELL @ 4796.0ft (RKB - 13')
North Reference: True
Survey Calculation Method: Minimum Curvature
Output errors are at 2.00 sigma
Database: Landmark
Offset TVD Reference: Offset Datum

Reference Depths are relative to WELL @ 4796.0ft (RKB - 13')

Offset Depths are relative to Offset Datum

Central Meridian is -105.500000 °

Coordinates are relative to: SRC Wiedeman 12-5-4NCHZ

Coordinate System is US State Plane 1983, Colorado Northern Zone

Grid Convergence at Surface is: 0.45°

