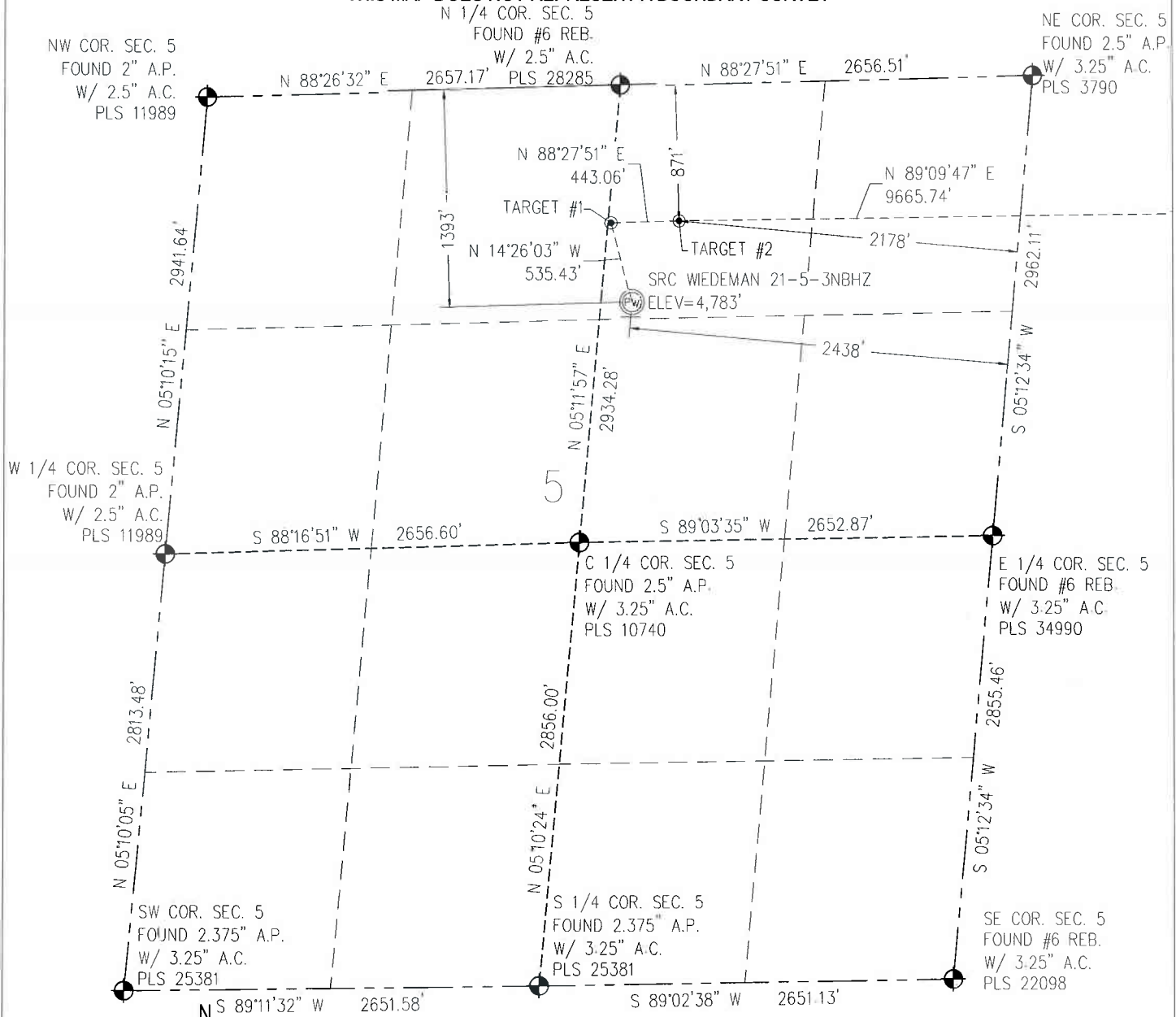


**WELL LOCATION CERTIFICATE****THIS MAP DOES NOT REPRESENT A BOUNDARY SURVEY**SECTION 5  
TOWNSHIP 5 NORTH  
RANGE 66 WEST

IN ACCORDANCE WITH A REQUEST FROM CRAIG RASMUSON - SYNERGY RESOURCES, BASELINE ENGINEERING CORP. HAS DETERMINED THE LOCATION OF THE SRC WIEDEMAN 21-5-3NBHZ TO BE 1393' FNL AND 2438' FEL, AS MEASURED AT NINETY (90) DEGREES FROM THE SECTION LINE OF SECTION 5, TOWNSHIP 5 NORTH, RANGE 66 WEST AND THE BOTTOM HOLE LOCATION TO BE 871' FNL AND 2155' FWL OF SECTION 3, TOWNSHIP 5 NORTH, RANGE 66 WEST, 6TH PRINCIPAL MERIDIAN, WELD COUNTY, COLORADO.

I HEREBY CERTIFY THAT THIS WELL LOCATION CERTIFICATE WAS PREPARED BY ME, OR UNDER MY DIRECT SUPERVISION, THAT THE FIELD WORK WAS COMPLETED ON 3/26/2014, THAT IT IS NOT A LAND SURVEY PLAT OR AN IMPROVEMENT SURVEY PLAT, AND THAT IT IS NOT TO BE RELIED UPON FOR ESTABLISHMENT OF FENCE, BUILDING, OR OTHER FUTURE IMPROVEMENT LINES.

0 1000  
Scale 1" = 1000 ft

**NOTES:**

- 1) LAT/LONG SHOWN ARE BASED ON A GPS OBSERVATION (NAD83).
- 2) BEARINGS SHOWN ARE GRID BEARINGS OF THE COLORADO STATE PLANE COORDINATE SYSTEM, NORTH ZONE, NORTH AMERICAN DATUM 1983/2007.
- 3) GROUND ELEVATIONS ARE BASED ON A GPS OBSERVATION (NAVD 88 DATUM).
- 4) ALL DISTANCES SHOWN ARE FIELD MEASURED UNLESS OTHERWISE NOTED.
- 5) THE NEAREST EXISTING WELL IS:  
GREELEY TECH CENTER NO. 41-5 2100' NE.
- 6) IMPROVEMENTS: SEE LOCATION DRAWING EXHIBIT FOR ALL VISIBLE IMPROVEMENTS WITHIN 600' OF WELL HEAD.
- 7) SURFACE USE: AGRICULTURAL FIELD.
- 8) OPERATOR NAME: BRETT BIRCH.

NOTICE: According to Colorado law you MUST commence any legal action based upon any defect in this W.L.C. within three years after you first discover such defect. In no event may any action based upon any defect in this W.L.C. be commenced more than ten years from this said date of the certification shown herein.

**SURFACE HOLE:**  
LATITUDE: 40.433356° N  
LONGITUDE: 104.801710° W  
PDOP: 1.6  
1/4, 1/4: NW1/4NE1/4  
NEAREST PROPERTY LINE: 200' W

**BOTTOM HOLE:**  
LATITUDE: 40.434978° N  
LONGITUDE: 104.765870° W

**TARGET #1:**  
LATITUDE: 40.434782° N  
LONGITUDE: 104.802174° W

**TARGET #2:**  
LATITUDE: 40.434805° N  
LONGITUDE: 104.800583° W

**LEGEND**

- - FOUND/SET SURVEY MONUMENT PER MONUMENT RECORD EXCEPTIONS NOTED
- - CALCULATED SURVEY MONUMENT POSITION
- (C) - CALCULATED DIMENSION



AARON A. DEMO  
Professional Land Surveyor Registration No. 38285  
State of Colorado  
FOR AND ON BEHALF OF BASELINE ENGINEERING CORP.

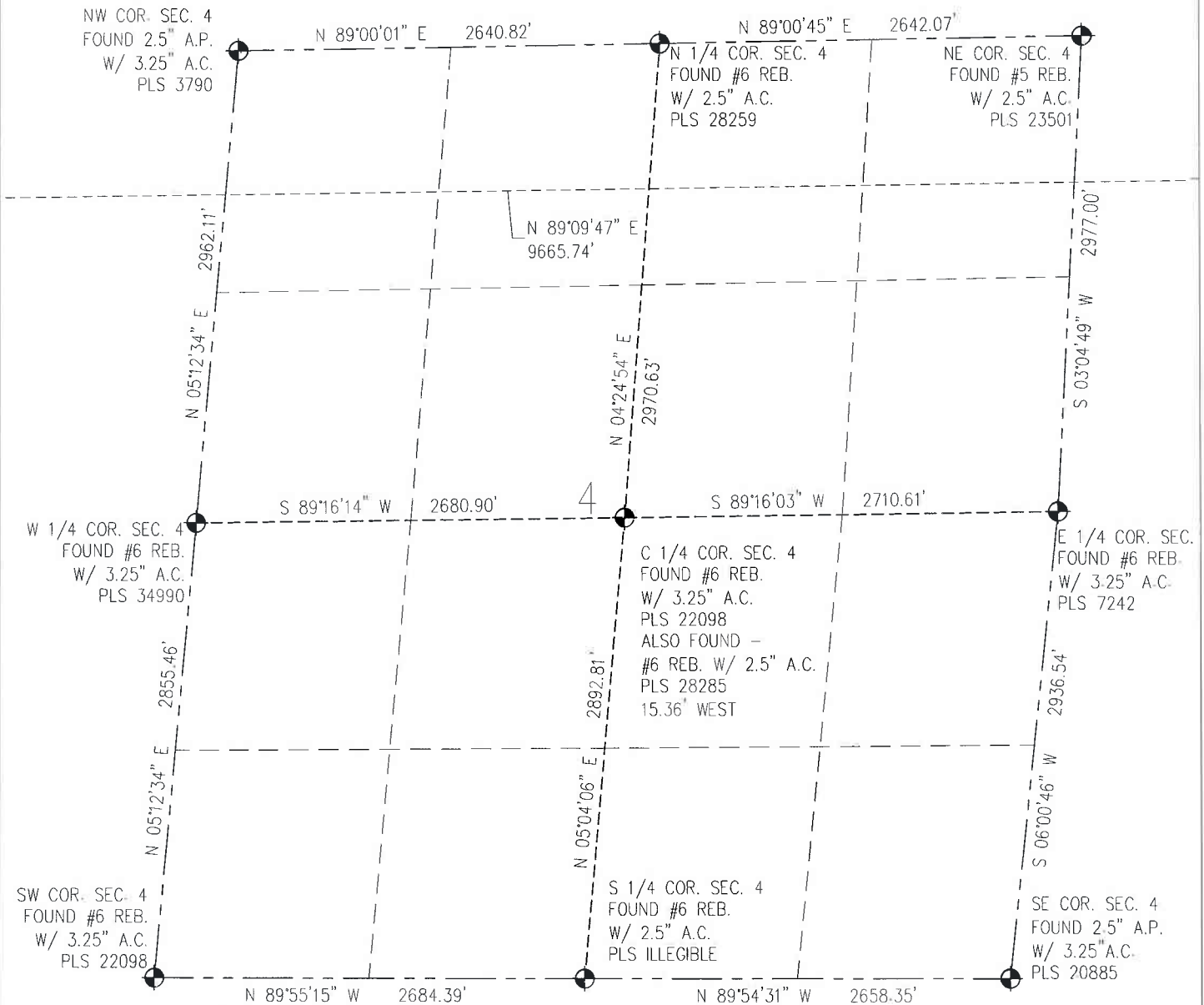
Completed  
4/17/2014

PROJECT #: SYN5N66W05-02

# WELL LOCATION CERTIFICATE

THIS MAP DOES NOT REPRESENT A BOUNDARY SURVEY

SECTION 5  
TOWNSHIP 5 NORTH  
RANGE 66 WEST



0 1000  
Scale 1" = 1000 ft

IN ACCORDANCE WITH A REQUEST FROM CRAIG RASMUSON - SYNERGY RESOURCES, BASELINE ENGINEERING CORP. HAS DETERMINED THE LOCATION OF THE SRC WIEDEMAN 21-5-3NBH 1393' FNL AND 2438' FEL, AS MEASURED AT NINETY (90) DEGREES FROM THE SECTION LINE OF SECTION 5, TOWNSHIP 5 NORTH, RANGE 66 WEST AND THE BOTTOM HOLE LOCATION TO BE 871' FNL AND 2155' FWL OF SECTION 3, TOWNSHIP 5 NORTH, RANGE 66 WEST, 6TH PRINCIPAL MERIDIAN, WELD COUNTY, COLORADO.

I HEREBY CERTIFY THAT THIS WELL LOCATION CERTIFICATE WAS PREPARED BY ME, OR UNDER MY DIRECT SUPERVISION, THAT THE FIELD WORK WAS COMPLETED ON 3/26/2014, THAT IT IS NOT A LAND SURVEY PLAT OR AN IMPROVEMENT SURVEY PLAT, AND THAT IT IS NOT TO BE RELIED UPON FOR ESTABLISHMENT OF FENCE, BUILDING, OR OTHER FUTURE IMPROVEMENT LINES.

## NOTES:

- 1) LAT/LONG SHOWN ARE BASED ON A GPS OBSERVATION (NAD83).
- 2) BEARINGS SHOWN ARE GRID BEARINGS OF THE COLORADO STATE PLANE COORDINATE SYSTEM, NORTH ZONE, NORTH AMERICAN DATUM 1983/2007.
- 3) GROUND ELEVATIONS ARE BASED ON A GPS OBSERVATION (NAVD 88 DATUM).
- 4) ALL DISTANCES SHOWN ARE FIELD MEASURED UNLESS OTHERWISE NOTED.
- 5) THE NEAREST EXISTING WELL IS:  
GREELEY TECH CENTER NO. 41-5 2100' NE.
- 6) IMPROVEMENTS: SEE LOCATION DRAWING EXHIBIT FOR ALL VISIBLE IMPROVEMENTS WITHIN 600' OF WELL HEAD.
- 7) SURFACE USE: AGRICULTURAL FIELD
- 8) OPERATOR NAME: BRETT BIRCH.

NOTICE: According to Colorado law you MUST commence any legal action based upon any defect in this WLC within three years after you first discover such defect. In no event may any action based upon any defect in this WLC be commenced more than ten years from this said date of the certification show herein.

## SURFACE HOLE:

LATITUDE: 40.433356° N  
LONGITUDE: 104.801710° W  
PDOP: 1.6  
1/4, 1/4: NW1/4NE1/4

NEAREST PROPERTY LINE: 200' W

## BOTTOM HOLE:

LATITUDE: 40.434978° N  
LONGITUDE: 104.765870° W

## TARGET #1:

LATITUDE: 40.434782° N  
LONGITUDE: 104.802174° W

## TARGET #2:

LATITUDE: 40.434805° N  
LONGITUDE: 104.800583° W

## LEGEND

- - FOUND/SET SURVEY MONUMENT PER MONUMENT RECORD EXCEPTIONS NOTED.
- - CALCULATED SURVEY MONUMENT POSITION
- (C) - CALCULATED DIMENSION



AARON A. DEMO

Professional Land Surveyor Registration No. 38285

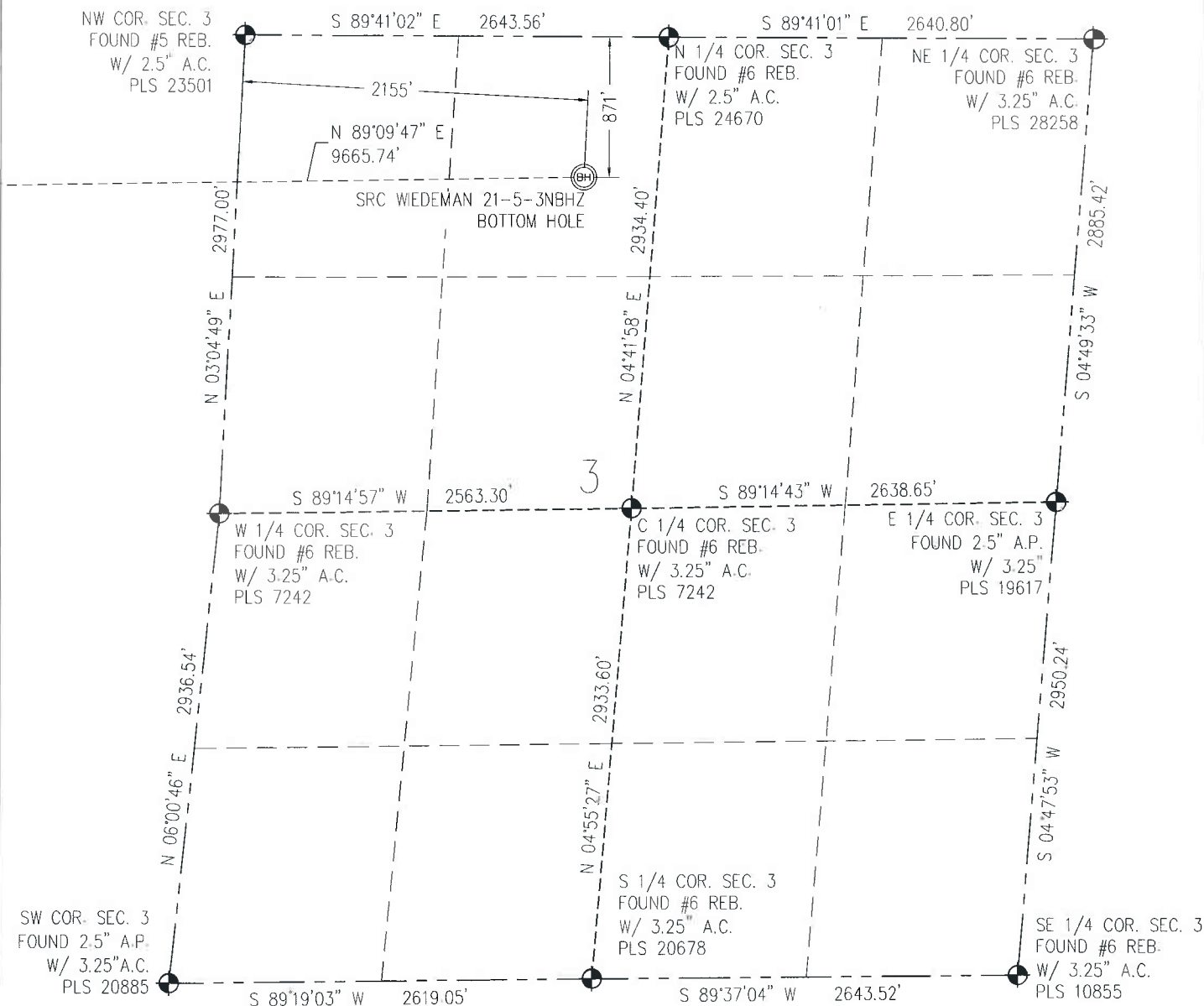
State of Colorado

FOR AND ON BEHALF OF BASELINE ENGINEERING CORP.

Completed

4/17/2014

PROJECT #: SYN5N66W05-02

**WELL LOCATION CERTIFICATE****THIS MAP DOES NOT REPRESENT A BOUNDARY SURVEY**SECTION 5  
TOWNSHIP 5 NORTH  
RANGE 66 WEST

IN ACCORDANCE WITH A REQUEST FROM CRAIG RASMUSON - SYNERGY RESOURCES, BASELINE ENGINEERING CORP. HAS DETERMINED THE LOCATION OF THE SRC WIEDEMAN 21-5-3NBHZ TO BE 1393' FNL AND 2438' FEL, AS MEASURED AT NINETY (90) DEGREES FROM THE SECTION LINE OF SECTION 5, TOWNSHIP 5 NORTH, RANGE 66 WEST AND THE BOTTOM HOLE LOCATION TO BE 871' FNL AND 2155' FWL OF SECTION 3, TOWNSHIP 5 NORTH, RANGE 66 WEST, 6TH PRINCIPAL MERIDIAN, WELD COUNTY, COLORADO.

I HEREBY CERTIFY THAT THIS WELL LOCATION CERTIFICATE WAS PREPARED BY ME, OR UNDER MY DIRECT SUPERVISION, THAT THE FIELD WORK WAS COMPLETED ON 3/26/2014, THAT IT IS NOT A LAND SURVEY PLAT OR AN IMPROVEMENT SURVEY PLAT, AND THAT IT IS NOT TO BE RELIED UPON FOR ESTABLISHMENT OF FENCE, BUILDING, OR OTHER FUTURE IMPROVEMENT LINES.

0 1000  
Scale 1" = 1000 ft

**NOTES:**

- 1) LAT/LONG SHOWN ARE BASED ON A GPS OBSERVATION (NAD83)
- 2) BEARINGS SHOWN ARE GRID BEARINGS OF THE COLORADO STATE PLANE COORDINATE SYSTEM, NORTH ZONE, NORTH AMERICAN DATUM 1983/2007
- 3) GROUND ELEVATIONS ARE BASED ON A GPS OBSERVATION (NAVD 88 DATUM).
- 4) ALL DISTANCES SHOWN ARE FIELD MEASURED UNLESS OTHERWISE NOTED.
- 5) THE NEAREST EXISTING WELL IS:  
GREELEY TECH CENTER NO. 41-5 2100' NE
- 6) IMPROVEMENTS: SEE LOCATION DRAWING EXHIBIT FOR ALL VISIBLE IMPROVEMENTS WITHIN 600' OF WELL HEAD.
- 7) SURFACE USE: AGRICULTURAL FIELD.
- 8) OPERATOR NAME: BRETT BIRCH.

NOTICE: According to Colorado law you MUST commence any legal action based upon any defect in this WLC within three years after you first discover such defect. In no event may any action based upon any defect in this WLC be commenced more than ten years from this said date of the certification show herein

**SURFACE HOLE:**

LATITUDE: 40.433356° N  
LONGITUDE: 104.801710° W  
PDOP: 1.6  
1/4, 1/4: NW1/4NE1/4

NEAREST PROPERTY LINE: 200' W

**BOTTOM HOLE:**

LATITUDE: 40.434978° N  
LONGITUDE: 104.765870° W

**TARGET #1:**

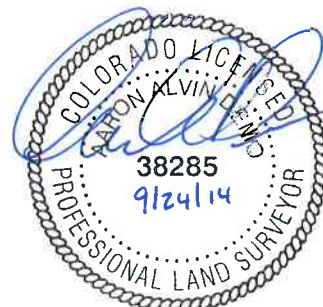
LATITUDE: 40.434782° N  
LONGITUDE: 104.802174° W

**TARGET #2:**

LATITUDE: 40.434805° N  
LONGITUDE: 104.800583° W

**LEGEND**

- - FOUND/SET SURVEY MONUMENT PER MONUMENT RECORD EXCEPTIONS NOTED.
- - CALCULATED SURVEY MONUMENT POSITION
- (C) - CALCULATED DIMENSION



AARON A. DEMO

Professional Land Surveyor Registration No. 38285

State of Colorado

FOR AND ON BEHALF OF BASELINE ENGINEERING CORP.

Completed

4/17/2014

PROJECT #: SYN5N66W05-02