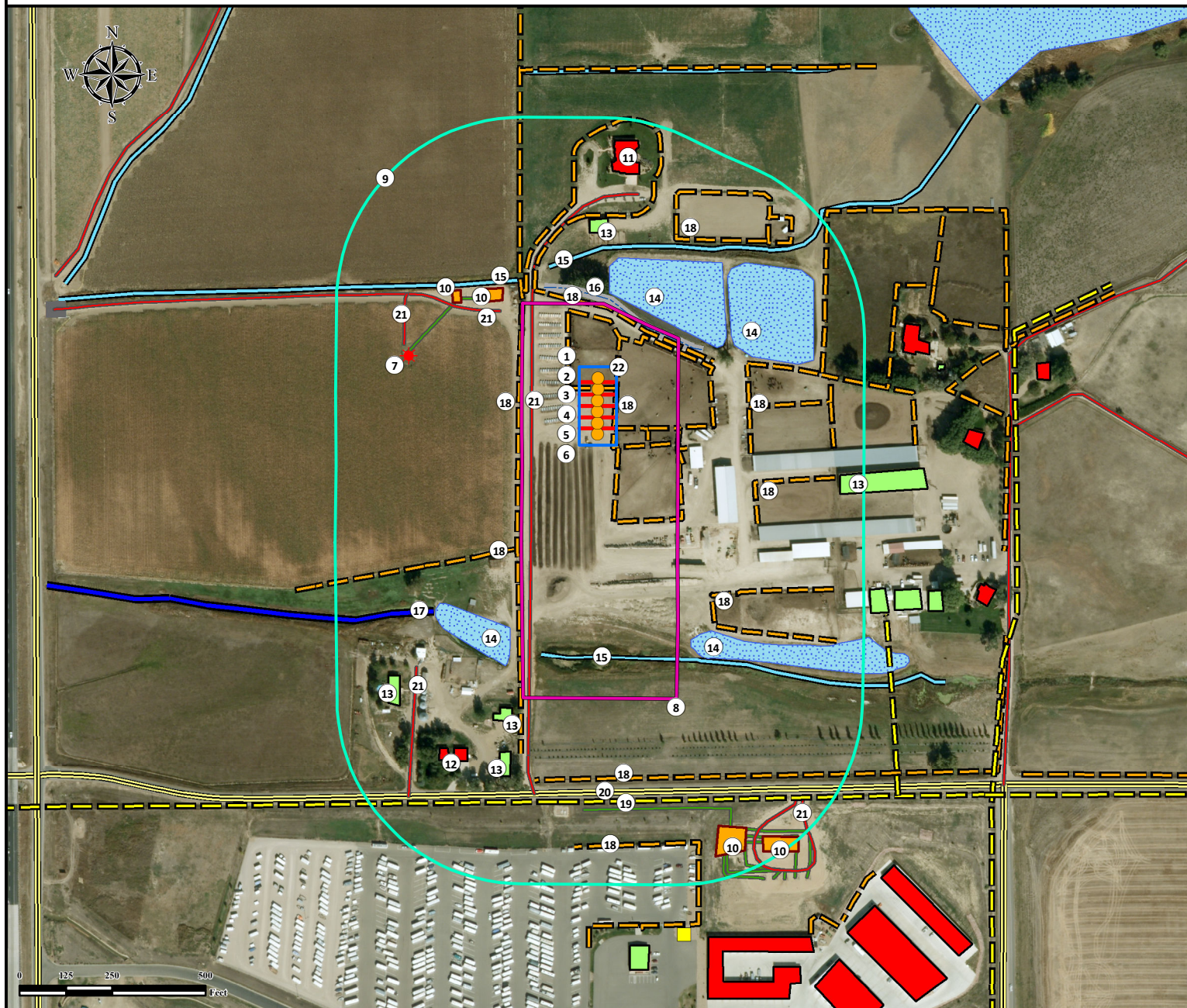


# Location Drawing DOCHEFF 13N-13HZ

## Horizontal Multi Well Pad

SE¼ SW¼ SECTION 14, TOWNSHIP 3 NORTH, RANGE 68 WEST OF THE 6TH PRINCIPAL MERIDIAN



1. Proposed Well DOCHEFF 33C-13HZ.
2. Proposed Well DOCHEFF 13N-15HZ.
3. Proposed Well DOCHEFF 13N-13HZ.
4. Proposed Well DOCHEFF 13C-15HZ.
5. Proposed Well DOCHEFF 34N-13HZ.
6. Proposed Well DOCHEFF 34N-15HZ.
7. Existing Well 1 ROBERT M BURCH GAS UNIT is ±522' NW.
8. Disturbance Area.
9. 500' Buffer.

10. Existing Facilities are ±373' NW, ±452' NW, ±1188' SE, and ±1254' SE.
11. Building Unit is ±612' NE.
12. Building Unit is ±997' SW.
13. Buildings are ±451' N, ±680' SE, ±858' SW, ±911' SW, and ±971' SW.
14. Ponds are ±272' NE, ±396' NE, ±655' SW, and ±685' SE.
15. Ditches are ±382' NW, ±389' NW, and ±688' S.
16. Concrete Ditch is ±273' N.

17. Canal is ±717' SW.
18. Fences are ±48' E, ±212' W, ±226' NE, ±405' E, ±454' SW, ±475' SE, ±491' NE, ±605' SE, ±1018' S, and ±1197' S.
19. Powerlines are ±1077' S.
20. County Road 32 is ±1054' S.
21. Private Roads are ±178' W, ±357' NW, ±542' NW, ±867' SW, and ±1191' SE.
22. Pump Jack Operations Area.

### Legend

- |                    |                           |              |
|--------------------|---------------------------|--------------|
| Proposed Well      | Disturbance Area          | Powerline    |
| Existing Well      | 500' Radius               | Fence        |
| Electrical Box     | Building Unit             | Private Road |
| Facility Enclosure | Building                  | Pipeline     |
| Pond               | Pump Jack Operations Area | Canal        |
|                    |                           | Ditch        |

### Reference Location

\*\* All measurements are made from  
Reference Well DOCHEFF 13N-13HZ \*\*  
Lat: 40.221773° Long: -104.974215° (NAD83)  
Elevation: 4935 Feet

Surface Use: Feed Lot

Nearest Building Unit: ±612' NE



Use our resources to find yours!  
[www.petro-fs.com](http://www.petro-fs.com)  
(303) 928-7128

Field Date: 05/09/2014  
Drafting Date: 05/28/2014  
Drafter: SMG  
Revision: 1

Data Sources:  
- Aerial courtesy of Anadarko  
Petroleum Corporation (2010)

Prepared for:

**Anadarko**  
Petroleum Corporation  
**KERR-MCGEE OIL & GAS ONSHORE LP**