

Location:	COLORADO	Slot:	SLOT#24 DOCHEFF 13C-15HZ (1005'FSL & 1513'FWL, SEC.14)
Field:	WELD COUNTY (KERR MCGEE)	Well:	DOCHEFF 13C-15HZ
Facility:	SEC.14-T3N-R68W	Wellbore:	DOCHEFF 13C-15HZ PWB

[illegible]

File: DOCHEFF 13C-15HZ PWB

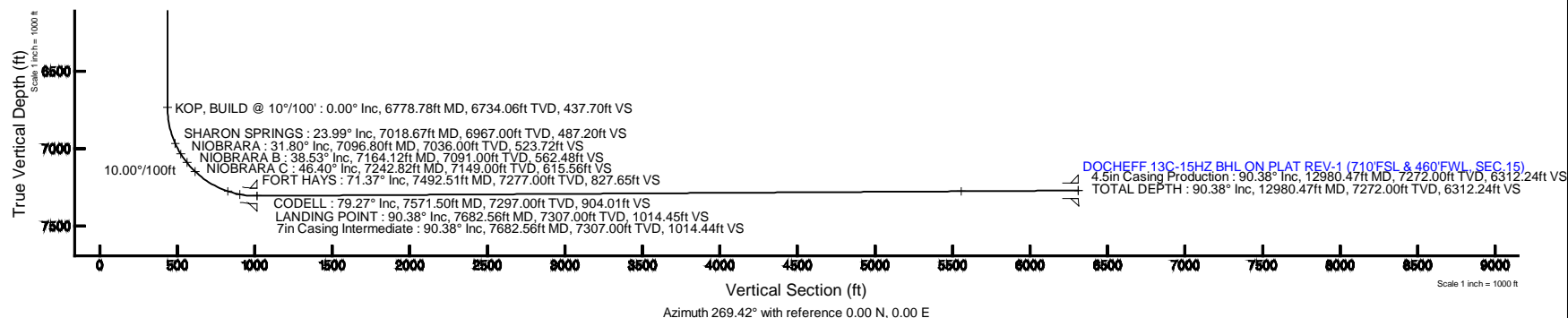
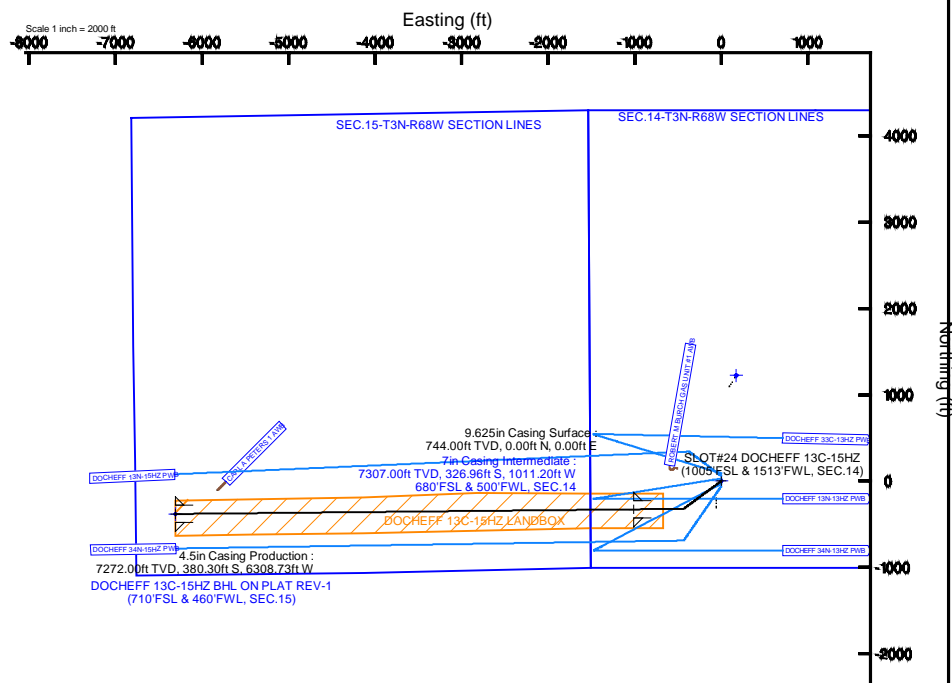
Created by: precain on 11/5/2011

Facility Name				Grid East (US ft)	Grid North (US ft)	Latitude	Longitude
SEC. 14-TIN-R66W				3146766.378	1323729.589	40°13'15.029"N	104°58'27.900"W
Slot	Local N (ft)	Local E (ft)	Grid East (US ft)	Grid North (US ft)	Latitude	Longitude	
SLOT#24 DOOHEFF 13C-15#Z (1005FSL & 1513FWL, SEC.14)	309.55	56.01	3146620.546	1324039.456	40°13'18.088"N	104°58'27.178"W	
PERMT (17K01) (R00) to Mud line (N/S: SLOT#24 DOOHEFF 13C-15#Z (1005FSL & 1513FWL, SEC.14)							4952R
Mean Sea Level to Mud line (N/S: SLOT#24 DOOHEFF 13C-15#Z (1005FSL & 1513FWL, SEC.14)							0R
PERMT (17K01) (R00) to Mean Sea Level							4952R

Start MD (ft)	End MD (ft)	Tool	Model	Log Name/Comment	Wellbore
17.00	12980.47	NaviTrak	NaviTrak (IFR) 1		DOCHEFF 13C-15HZ PWB

Design Comment	MD (ft)	Inc (")	Az (°)	TVD (ft)	Local N (ft)	Local E (ft)	DLS (%/100ft)	VS (ft)
TIE ON	17.00	0.000	233.530	17.00	0.00	0.00	0.00	0.00
BEGIN NUDGE	1200.00	0.000	233.530	1200.00	0.00	0.00	0.00	0.00
END NUDGE	1700.00	10.000	233.530	1697.47	-25.87	-35.00	2.00	35.26
BEGIN DROP	4310.19	10.000	233.530	4268.00	-295.29	-399.49	0.00	402.45
END DROP	4810.19	0.000	269.423	4765.47	-321.16	-434.49	2.00	437.70
KOP, BUILD @ 10"/100'	6778.78	0.000	269.423	6734.06	-321.16	-434.49	0.00	437.70
LANDING POINT	7682.56	90.379	269.423	7307.00	-326.96	-1011.21	10.00	1014.45
TOTAL DEPTH	12980.47	90.379	269.423	7272.00	-380.30	-6308.73	0.00	6312.24

Name	MD (ft)	TVD (ft)	Local N (ft)	Local E (ft)	GHD East (US ft)	GHD North (US ft)	Latitude	Longitude
SEC. 13-T3N-R66W SECTION LINES		1407	1223.85	174.53	3146987.81	3126264.06	40°13'20.180"N	104°58'24.928"W
SEC. 13-T3N-R66W SECTION LINES	4952	500	3457.85	8446.30	3155245.81	3127547.17	40°13'52.244"N	104°56'38.278"W
SEC. 14-T3N-R66W SECTION LINES		4952	3457.85	8446.30	3155245.81	3127547.17	40°13'52.244"N	104°56'38.278"W
DOCHFEF 13C-154Z B4L ON PLAT REV. 1 (710PSL & 460FWL SEC. 15)	12980.47	7272	080.30	-6308.73	3140514.47	3123621.78	40°11'14.322"N	104°59'48.505"W
DOCHFEF 13C-154Z LANDJOB		7272	000.00	3148520.55	3140399.46	3118138.088"N	104°58'27.178"W	



REFERENCE WELLPATH IDENTIFICATION			
Operator	KERR-MCGEE OIL & GAS ONSHORE LP	Slot	SLOT#24 DOCHEFF 13C-15HZ (1005'FSL & 1513'FWL, SEC.14)
Area	COLORADO	Well	DOCHEFF 13C-15HZ
Field	WELD COUNTY (KERR MCGEE)	Wellbore	DOCHEFF 13C-15HZ PWB
Facility	SEC.14-T3N-R68W		

REPORT SETUP INFORMATION			
Projection System	NAD83 / Lambert Colorado SP, Northern Zone (501), US feet	Software System	WellArchitect® 4.0.0
North Reference	True	User	Precain
Scale	0.999957	Report Generated	11/Sep/2014 at 12:14
Convergence at slot	n/a	Database/Source file	WellArchitectDB/DOCHEFF_13C-15HZ_PWB.xml

WELLPATH LOCATION						
	Local coordinates		Grid coordinates		Geographic coordinates	
	North[ft]	East[ft]	Easting[US ft]	Northing[US ft]	Latitude	Longitude
Slot Location	309.55	56.01	3146820.55	1324039.46	40°13'18.088"N	104°58'27.178"W
Facility Reference Pt			3146766.38	1323729.59	40°13'15.029"N	104°58'27.900"W
Field Reference Pt			3197771.84	1268891.29	40°04'09.600"N	104°47'36.000"W

WELLPATH DATUM			
Calculation method	Minimum curvature	PERMIT (17'KB) (RKB) to Facility Vertical Datum	4952.00ft
Horizontal Reference Pt	Slot	PERMIT (17'KB) (RKB) to Mean Sea Level	4952.00ft
Vertical Reference Pt	PERMIT (17'KB) (RKB)	PERMIT (17'KB) (RKB) to Mud Line at Slot (SLOT#24 DOCHEFF 13C-15HZ (1005'FSL & 1513'FWL, SEC.14))	4952.00ft
MD Reference Pt	PERMIT (17'KB) (RKB)	Section Origin	N 0.00, E 0.00 ft
Field Vertical Reference	Mean Sea Level	Section Azimuth	269.42°

REFERENCE WELLPATH IDENTIFICATION			
Operator	KERR-MCGEE OIL & GAS ONSHORE LP	Slot	SLOT#24 DOCHEFF 13C-15HZ (1005'FSL & 1513'FWL, SEC.14)
Area	COLORADO	Well	DOCHEFF 13C-15HZ
Field	WELD COUNTY (KERR MCGEE)	Wellbore	DOCHEFF 13C-15HZ PWB
Facility	SEC.14-T3N-R68W		

WELLPATH DATA (138 stations) † = interpolated/extrapolated station							
MD [ft]	Inclination [°]	Azimuth [°]	TVD [ft]	Vert Sect [ft]	North [ft]	East [ft]	DLS [°/100ft]
0.00†	0.000	233.530	0.00	0.00	0.00	0.00	0.00
17.00	0.000	233.530	17.00	0.00	0.00	0.00	0.00
117.00†	0.000	233.530	117.00	0.00	0.00	0.00	0.00
217.00†	0.000	233.530	217.00	0.00	0.00	0.00	0.00
317.00†	0.000	233.530	317.00	0.00	0.00	0.00	0.00
417.00†	0.000	233.530	417.00	0.00	0.00	0.00	0.00
517.00†	0.000	233.530	517.00	0.00	0.00	0.00	0.00
617.00†	0.000	233.530	617.00	0.00	0.00	0.00	0.00
717.00†	0.000	233.530	717.00	0.00	0.00	0.00	0.00
817.00†	0.000	233.530	817.00	0.00	0.00	0.00	0.00
917.00†	0.000	233.530	917.00	0.00	0.00	0.00	0.00
1017.00†	0.000	233.530	1017.00	0.00	0.00	0.00	0.00
1117.00†	0.000	233.530	1117.00	0.00	0.00	0.00	0.00
1200.00	0.000	233.530	1200.00	0.00	0.00	0.00	0.00
1217.00†	0.340	233.530	1217.00	0.04	-0.03	-0.04	2.00
1317.00†	2.340	233.530	1316.97	1.94	-1.42	-1.92	2.00
1417.00†	4.340	233.530	1416.79	6.65	-4.88	-6.61	2.00
1517.00†	6.340	233.530	1516.35	14.19	-10.41	-14.09	2.00
1617.00†	8.340	233.530	1615.53	24.54	-18.01	-24.36	2.00
1700.00	10.000	233.530	1697.47	35.26	-25.87	-35.00	2.00
1717.00†	10.000	233.530	1714.21	37.65	-27.62	-37.37	0.00
1817.00†	10.000	233.530	1812.69	51.72	-37.95	-51.34	0.00
1917.00†	10.000	233.530	1911.17	65.78	-48.27	-65.30	0.00
2017.00†	10.000	233.530	2009.65	79.85	-58.59	-79.27	0.00
2117.00†	10.000	233.530	2108.13	93.92	-68.91	-93.23	0.00
2217.00†	10.000	233.530	2206.61	107.99	-79.23	-107.19	0.00
2317.00†	10.000	233.530	2305.09	122.05	-89.55	-121.16	0.00
2417.00†	10.000	233.530	2403.57	136.12	-99.88	-135.12	0.00
2517.00†	10.000	233.530	2502.05	150.19	-110.20	-149.09	0.00
2617.00†	10.000	233.530	2600.53	164.26	-120.52	-163.05	0.00
2717.00†	10.000	233.530	2699.01	178.32	-130.84	-177.02	0.00
2817.00†	10.000	233.530	2797.50	192.39	-141.16	-190.98	0.00
2917.00†	10.000	233.530	2895.98	206.46	-151.48	-204.94	0.00
3017.00†	10.000	233.530	2994.46	220.53	-161.81	-218.91	0.00
3117.00†	10.000	233.530	3092.94	234.59	-172.13	-232.87	0.00
3217.00†	10.000	233.530	3191.42	248.66	-182.45	-246.84	0.00
3317.00†	10.000	233.530	3289.90	262.73	-192.77	-260.80	0.00
3417.00†	10.000	233.530	3388.38	276.80	-203.09	-274.77	0.00
3517.00†	10.000	233.530	3486.86	290.86	-213.41	-288.73	0.00
3617.00†	10.000	233.530	3585.34	304.93	-223.74	-302.69	0.00
3717.00†	10.000	233.530	3683.82	319.00	-234.06	-316.66	0.00
3817.00†	10.000	233.530	3782.30	333.07	-244.38	-330.62	0.00
3917.00†	10.000	233.530	3880.78	347.13	-254.70	-344.59	0.00
4017.00†	10.000	233.530	3979.26	361.20	-265.02	-358.55	0.00
4117.00†	10.000	233.530	4077.75	375.27	-275.34	-372.52	0.00

REFERENCE WELLPATH IDENTIFICATION			
Operator	KERR-MCGEE OIL & GAS ONSHORE LP	Slot	SLOT#24 DOCHEFF 13C-15HZ (1005'FSL & 1513'FWL, SEC.14)
Area	COLORADO	Well	DOCHEFF 13C-15HZ
Field	WELD COUNTY (KERR MCGEE)	Wellbore	DOCHEFF 13C-15HZ PWB
Facility	SEC.14-T3N-R68W		

WELLPATH DATA (138 stations) † = interpolated/extrapolated station							
MD [ft]	Inclination [°]	Azimuth [°]	TVD [ft]	Vert Sect [ft]	North [ft]	East [ft]	DLS [°/100ft]
4217.00†	10.000	233.530	4176.23	389.34	-285.67	-386.48	0.00
4310.19	10.000	233.530	4268.00	402.45	-295.29	-399.49	0.00
4317.00†	9.864	233.530	4274.71	403.40	-295.98	-400.44	2.00
4417.00†	7.864	233.530	4373.51	415.88	-305.14	-412.83	2.00
4517.00†	5.864	233.530	4472.79	425.56	-312.25	-422.44	2.00
4617.00†	3.864	233.530	4572.42	432.43	-317.28	-429.26	2.00
4717.00†	1.864	233.530	4672.29	436.48	-320.25	-433.27	2.00
4810.19	0.000	269.423	4765.47	437.70	-321.16	-434.49	2.00
4817.00†	0.000	269.423	4772.28	437.70	-321.16	-434.49	0.00
4917.00†	0.000	269.423	4872.28	437.70	-321.16	-434.49	0.00
5017.00†	0.000	269.423	4972.28	437.70	-321.16	-434.49	0.00
5117.00†	0.000	269.423	5072.28	437.70	-321.16	-434.49	0.00
5217.00†	0.000	269.423	5172.28	437.70	-321.16	-434.49	0.00
5317.00†	0.000	269.423	5272.28	437.70	-321.16	-434.49	0.00
5417.00†	0.000	269.423	5372.28	437.70	-321.16	-434.49	0.00
5517.00†	0.000	269.423	5472.28	437.70	-321.16	-434.49	0.00
5617.00†	0.000	269.423	5572.28	437.70	-321.16	-434.49	0.00
5717.00†	0.000	269.423	5672.28	437.70	-321.16	-434.49	0.00
5817.00†	0.000	269.423	5772.28	437.70	-321.16	-434.49	0.00
5917.00†	0.000	269.423	5872.28	437.70	-321.16	-434.49	0.00
6017.00†	0.000	269.423	5972.28	437.70	-321.16	-434.49	0.00
6117.00†	0.000	269.423	6072.28	437.70	-321.16	-434.49	0.00
6217.00†	0.000	269.423	6172.28	437.70	-321.16	-434.49	0.00
6317.00†	0.000	269.423	6272.28	437.70	-321.16	-434.49	0.00
6417.00†	0.000	269.423	6372.28	437.70	-321.16	-434.49	0.00
6517.00†	0.000	269.423	6472.28	437.70	-321.16	-434.49	0.00
6617.00†	0.000	269.423	6572.28	437.70	-321.16	-434.49	0.00
6717.00†	0.000	269.423	6672.28	437.70	-321.16	-434.49	0.00
6778.78	0.000	269.423	6734.06	437.70	-321.16	-434.49	0.00
6817.00†	3.822	269.423	6772.25	438.98	-321.17	-435.77	10.00
6917.00†	13.822	269.423	6870.94	454.30	-321.32	-451.08	10.00
7017.00†	23.822	269.423	6965.47	486.52	-321.65	-483.30	10.00
7117.00†	33.822	269.423	7052.97	534.67	-322.13	-531.45	10.00
7217.00†	43.822	269.423	7130.78	597.28	-322.76	-594.06	10.00
7317.00†	53.822	269.423	7196.54	672.45	-323.52	-669.22	10.00
7417.00†	63.822	269.423	7248.24	757.90	-324.38	-754.67	10.00
7517.00†	73.822	269.423	7284.32	851.02	-325.32	-847.79	10.00
7617.00†	83.822	269.423	7303.69	949.00	-326.30	-945.76	10.00
7682.56	90.379	269.423	7307.00	1014.45	-326.96	-1011.21	10.00
7717.00†	90.379	269.423	7306.77	1048.88	-327.31	-1045.64	0.00
7817.00†	90.379	269.423	7306.11	1148.88	-328.31	-1145.63	0.00
7917.00†	90.379	269.423	7305.45	1248.88	-329.32	-1245.62	0.00
8017.00†	90.379	269.423	7304.79	1348.88	-330.33	-1345.62	0.00
8117.00†	90.379	269.423	7304.13	1448.87	-331.33	-1445.61	0.00
8217.00†	90.379	269.423	7303.47	1548.87	-332.34	-1545.60	0.00

REFERENCE WELLPATH IDENTIFICATION			
Operator	KERR-MCGEE OIL & GAS ONSHORE LP	Slot	SLOT#24 DOCHEFF 13C-15HZ (1005'FSL & 1513'FWL, SEC.14)
Area	COLORADO	Well	DOCHEFF 13C-15HZ
Field	WELD COUNTY (KERR MCGEE)	Wellbore	DOCHEFF 13C-15HZ PWB
Facility	SEC.14-T3N-R68W		

WELLPATH DATA (138 stations) † = interpolated/extrapolated station							
MD [ft]	Inclination [°]	Azimuth [°]	TVD [ft]	Vert Sect [ft]	North [ft]	East [ft]	DLS [°/100ft]
8317.00†	90.379	269.423	7302.81	1648.87	-333.35	-1645.60	0.00
8417.00†	90.379	269.423	7302.15	1748.87	-334.35	-1745.59	0.00
8517.00†	90.379	269.423	7301.49	1848.86	-335.36	-1845.58	0.00
8617.00†	90.379	269.423	7300.83	1948.86	-336.37	-1945.57	0.00
8717.00†	90.379	269.423	7300.17	2048.86	-337.38	-2045.57	0.00
8817.00†	90.379	269.423	7299.51	2148.86	-338.38	-2145.56	0.00
8917.00†	90.379	269.423	7298.85	2248.86	-339.39	-2245.55	0.00
9017.00†	90.379	269.423	7298.18	2348.85	-340.40	-2345.54	0.00
9117.00†	90.379	269.423	7297.52	2448.85	-341.40	-2445.54	0.00
9217.00†	90.379	269.423	7296.86	2548.85	-342.41	-2545.53	0.00
9317.00†	90.379	269.423	7296.20	2648.85	-343.42	-2645.52	0.00
9417.00†	90.379	269.423	7295.54	2748.84	-344.42	-2745.52	0.00
9517.00†	90.379	269.423	7294.88	2848.84	-345.43	-2845.51	0.00
9617.00†	90.379	269.423	7294.22	2948.84	-346.44	-2945.50	0.00
9717.00†	90.379	269.423	7293.56	3048.84	-347.44	-3045.49	0.00
9817.00†	90.379	269.423	7292.90	3148.84	-348.45	-3145.49	0.00
9917.00†	90.379	269.423	7292.24	3248.83	-349.46	-3245.48	0.00
10017.00†	90.379	269.423	7291.58	3348.83	-350.46	-3345.47	0.00
10117.00†	90.379	269.423	7290.92	3448.83	-351.47	-3445.46	0.00
10217.00†	90.379	269.423	7290.26	3548.83	-352.48	-3545.46	0.00
10317.00†	90.379	269.423	7289.60	3648.83	-353.48	-3645.45	0.00
10417.00†	90.379	269.423	7288.94	3748.82	-354.49	-3745.44	0.00
10517.00†	90.379	269.423	7288.27	3848.82	-355.50	-3845.44	0.00
10617.00†	90.379	269.423	7287.61	3948.82	-356.50	-3945.43	0.00
10717.00†	90.379	269.423	7286.95	4048.82	-357.51	-4045.42	0.00
10817.00†	90.379	269.423	7286.29	4148.81	-358.52	-4145.41	0.00
10917.00†	90.379	269.423	7285.63	4248.81	-359.52	-4245.41	0.00
11017.00†	90.379	269.423	7284.97	4348.81	-360.53	-4345.40	0.00
11117.00†	90.379	269.423	7284.31	4448.81	-361.54	-4445.39	0.00
11217.00†	90.379	269.423	7283.65	4548.81	-362.54	-4545.38	0.00
11317.00†	90.379	269.423	7282.99	4648.80	-363.55	-4645.38	0.00
11417.00†	90.379	269.423	7282.33	4748.80	-364.56	-4745.37	0.00
11517.00†	90.379	269.423	7281.67	4848.80	-365.56	-4845.36	0.00
11617.00†	90.379	269.423	7281.01	4948.80	-366.57	-4945.36	0.00
11717.00†	90.379	269.423	7280.35	5048.79	-367.58	-5045.35	0.00
11817.00†	90.379	269.423	7279.69	5148.79	-368.58	-5145.34	0.00
11917.00†	90.379	269.423	7279.03	5248.79	-369.59	-5245.33	0.00
12017.00†	90.379	269.423	7278.37	5348.79	-370.60	-5345.33	0.00
12117.00†	90.379	269.423	7277.70	5448.79	-371.60	-5445.32	0.00
12217.00†	90.379	269.423	7277.04	5548.78	-372.61	-5545.31	0.00
12317.00†	90.379	269.423	7276.38	5648.78	-373.62	-5645.31	0.00
12417.00†	90.379	269.423	7275.72	5748.78	-374.62	-5745.30	0.00
12517.00†	90.379	269.423	7275.06	5848.78	-375.63	-5845.29	0.00
12617.00†	90.379	269.423	7274.40	5948.77	-376.64	-5945.28	0.00
12717.00†	90.379	269.423	7273.74	6048.77	-377.64	-6045.28	0.00

REFERENCE WELLPATH IDENTIFICATION			
Operator	KERR-MCGEE OIL & GAS ONSHORE LP	Slot	SLOT#24 DOCHEFF 13C-15HZ (1005'FSL & 1513'FWL, SEC.14)
Area	COLORADO	Well	DOCHEFF 13C-15HZ
Field	WELD COUNTY (KERR MCGEE)	Wellbore	DOCHEFF 13C-15HZ PWB
Facility	SEC.14-T3N-R68W		

WELLPATH DATA (138 stations) † = interpolated/extrapolated station							
MD [ft]	Inclination [°]	Azimuth [°]	TVD [ft]	Vert Sect [ft]	North [ft]	East [ft]	DLS [°/100ft]
12817.00†	90.379	269.423	7273.08	6148.77	-378.65	-6145.27	0.00
12917.00†	90.379	269.423	7272.42	6248.77	-379.66	-6245.26	0.00
12980.47	90.379	269.423	7272.00 ¹	6312.24	-380.30	-6308.73	0.00

HOLE & CASING SECTIONS - Ref Wellbore: DOCHEFF 13C-15HZ PWB Ref Wellpath: DOCHEFF 13C-15HZ (PERMIT REV-1) PWP									
String/Diameter	Start MD [ft]	End MD [ft]	Interval [ft]	Start TVD [ft]	End TVD [ft]	Start N/S [ft]	Start E/W [ft]	End N/S [ft]	End E/W [ft]
13.5in Open Hole	17.00	744.00	727.00	17.00	744.00	0.00	0.00	0.00	0.00
9.625in Casing Surface	17.00	744.00	727.00	17.00	744.00	0.00	0.00	0.00	0.00
8.75in Open Hole	744.00	7682.56	6938.56	744.00	7307.00	0.00	0.00	-326.96	-1011.20
7in Casing Intermediate	17.00	7682.56	7665.56	17.00	7307.00	0.00	0.00	-326.96	-1011.20
6.125in Open Hole	7682.56	12980.47	5297.91	7307.00	7272.00	-326.96	-1011.20	-380.30	-6308.73
4.5in Casing Production	17.00	12980.47	12963.47	17.00	7272.00	0.00	0.00	-380.30	-6308.73

TARGETS									
Name	MD [ft]	TVD [ft]	North [ft]	East [ft]	Grid East [US ft]	Grid North [US ft]	Latitude	Longitude	Shape
SEC.15-T3N-R68W SECTION LINES		1.00	1223.65	174.53	3146987.81	1325264.06	40°13'30.180"N	104°58'24.928"W	polygon
SEC.13-T3N-R68W SECTION LINES		4952.00	3457.85	8446.30	3155245.81	1327547.17	40°13'52.244"N	104°56'38.278"W	polygon
SEC.14-T3N-R68W SECTION LINES		4952.00	3457.85	8446.30	3155245.81	1327547.17	40°13'52.244"N	104°56'38.278"W	polygon
1) DOCHEFF 13C-15HZ BHL ON PLAT REV-1 (710'FSL & 460'FWL, SEC.15)	12980.47	7272.00	-380.30	-6308.73	3140514.47	1323621.78	40°13'14.322"N	104°59'48.505"W	point
DOCHEFF 13C-15HZ LANDBOX		7272.00	0.00	0.00	3146820.55	1324039.46	40°13'18.088"N	104°58'27.178"W	polygon

SURVEY PROGRAM - Ref Wellbore: DOCHEFF 13C-15HZ PWB Ref Wellpath: DOCHEFF 13C-15HZ (PERMIT REV-1) PWP				
Start MD [ft]	End MD [ft]	Positional Uncertainty Model	Log Name/Comment	Wellbore
17.00	12980.47	NaviTrak (IFR)_1		DOCHEFF 13C-15HZ PWB