

Location:	COLORADO	Slot:	SLOT#26 DOCHEFF 34N-15HZ (945'FSL & 1513'FWL, SEC.14)
Field:	WELD COUNTY (KERR MCGEE)	Well:	DOCHEFF 34N-15HZ
Facility:	SEC.14-T3N-R68W	Wellbore:	DOCHEFF 34N-15HZ PWB

[illegible]

Callbore: DOCHEFF 34N-15HZ PWB

(L, SEC.14)). 0 feel

Depths are in feet

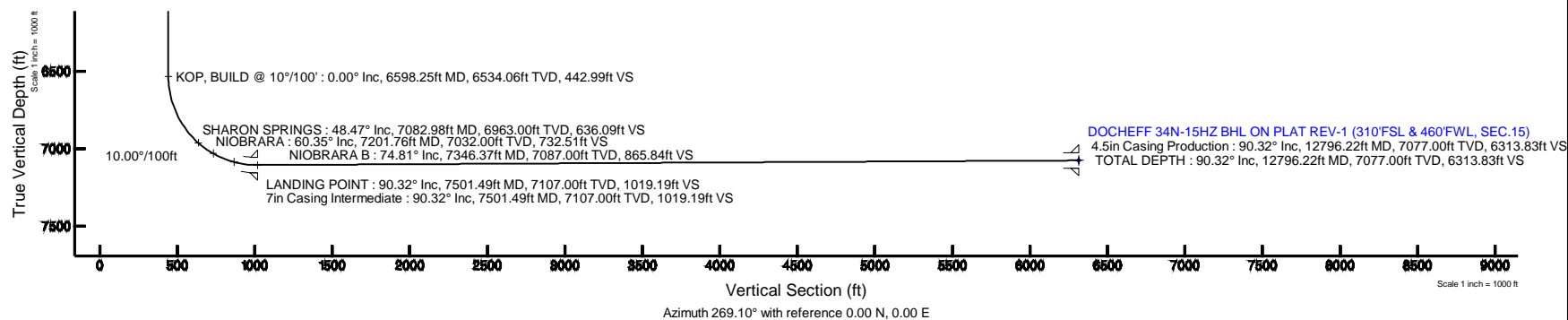
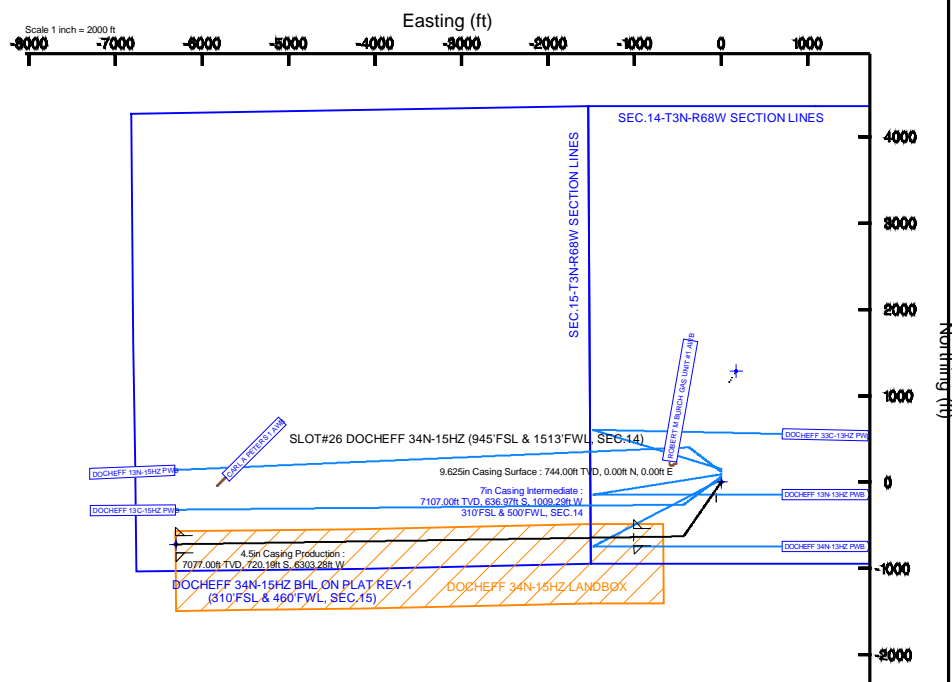
on

Facility Name				Grid East (US R)	Grid North (US R)	Latitude	Longitude
SEC. 14-T3N-R68W				3146766.378	1323729.589	40°13'55.029"N	104°58'27.860"W
Slot	Local N (R)	Local E (R)		Grid East (US R)	Grid North (US R)	Latitude	Longitude
SLOT#26 DOCHIEFF 34N-154Z (945FSL & 1513FWL, SEC. 14)	249.44	55.77		3146620.669	1323979.349	40°13'57.194"N	104°58'27.181"W
PERMIT 17(RK) (RKH) to Mud line (N Slot: SLOT#26 DOCHIEFF 34N-154Z (945FSL & 1513FWL, SEC. 14)						4952R	
Mean Sea Level to Mud line (N Slot: SLOT#26 DOCHIEFF 34N-154Z (945FSL & 1513FWL, SEC. 14)						0ft	
PERMIT 17(RK) (RKH) to Mean Sea Level						4952R	

Start MD (ft)	End MD (ft)	Tool	Model	Log Name/Comment	Wellbore
17.00	12796.22	NaviTrak	NaviTrak (IFR) 1		DOCHEFF 34N-15HZ PWB

Design Comment	MD (ft)	Inc (")	Az (")	TVD (ft)	Local N (ft)	Local E (ft)	DLS (°/100ft)	VS (ft)
TIE ON	17.00	0.000	214.600	17.00	0.00	0.00	0.00	0.00
BEGIN NUDGE	1000.00	0.000	214.600	1000.00	0.00	0.00	0.00	0.00
END NUDGE	1500.00	10.000	214.600	1497.47	-35.83	-24.71	2.00	25.27
BEGIN DROP	5391.66	10.000	214.600	5330.00	-592.08	-408.45	0.00	417.71
END DROP	5891.66	0.000	269.099	5827.47	-627.91	-433.17	2.00	442.99
KOP, BUILD @ 10°/100'	6598.25	0.000	269.099	6534.06	-627.91	-433.17	0.00	442.99
LANDING POINT	7501.49	90.325	269.099	7107.00	-636.97	-1009.30	10.00	1019.19
TOTAL DEPTH	12796.22	90.325	269.099	7077.00	-720.19	-6303.29	0.00	6313.83

Name	MD (ft)	TYD (ft)	Local N (ft)	Local E (ft)	Grid East (US ft)	Grid North (US ft)	Latitude	Longitude
SEC 15-T3N-R6W SECTION LINES		1.00	1263.76	174.76	3148987.81	1325264.06	40°13'30.180"N	104°58'24.928"W
SEC 13-T3N-R6W SECTION LINES		4952.00	3517.86	8446.53	3156245.81	1327547.17	40°13'32.378"N	104°56'38.278"W
SEC 14-T3N-R6W SECTION LINES		4952.00	3517.86	8446.53	3156245.81	1327547.17	40°13'32.244"N	104°56'38.278"W
DOCFEE 34N-154E OH, ON, PLAT REV 1 (310PSL & 460FWL, SEC 15)	12796.52	7077.00	-720.19	-4303.29	3140522.04	1301321.83	40°13'10.369"N	104°59'48.437"W
DOCFEE 34N-154E LAMPOK	7077.00	7077.00	0.00	0.00	3146800.00	1303679.35	40°13'37.454"N	104°56'57.183"W



REFERENCE WELLPATH IDENTIFICATION			
Operator	KERR-MCGEE OIL & GAS ONSHORE LP	Slot	SLOT#26 DOCHEFF 34N-15HZ (945'FSL & 1513'FWL, SEC.14)
Area	COLORADO	Well	DOCHEFF 34N-15HZ
Field	WELD COUNTY (KERR MCGEE)	Wellbore	DOCHEFF 34N-15HZ PWB
Facility	SEC.14-T3N-R68W		

REPORT SETUP INFORMATION			
Projection System	NAD83 / Lambert Colorado SP, Northern Zone (501), US feet	Software System	WellArchitect® 4.0.0
North Reference	True	User	Precain
Scale	0.999957	Report Generated	11/Sep/2014 at 11:09
Convergence at slot	n/a	Database/Source file	WellArchitectDB/DOCHEFF_34N-15HZ_PWB.xml

WELLPATH LOCATION						
	Local coordinates		Grid coordinates		Geographic coordinates	
	North[ft]	East[ft]	Easting[US ft]	Northing[US ft]	Latitude	Longitude
Slot Location	249.44	55.77	3146820.67	1323979.35	40°13'17.494"N	104°58'27.181"W
Facility Reference Pt			3146766.38	1323729.59	40°13'15.029"N	104°58'27.900"W
Field Reference Pt			3197771.84	1268891.29	40°04'09.600"N	104°47'36.000"W

WELLPATH DATUM			
Calculation method	Minimum curvature	PERMIT (17'KB) (RKB) to Facility Vertical Datum	4952.00ft
Horizontal Reference Pt	Slot	PERMIT (17'KB) (RKB) to Mean Sea Level	4952.00ft
Vertical Reference Pt	PERMIT (17'KB) (RKB)	PERMIT (17'KB) (RKB) to Mud Line at Slot (SLOT#26 DOCHEFF 34N-15HZ (945'FSL & 1513'FWL, SEC.14))	4952.00ft
MD Reference Pt	PERMIT (17'KB) (RKB)	Section Origin	N 0.00, E 0.00 ft
Field Vertical Reference	Mean Sea Level	Section Azimuth	269.10°

REFERENCE WELLPATH IDENTIFICATION			
Operator	KERR-MCGEE OIL & GAS ONSHORE LP	Slot	SLOT#26 DOCHEFF 34N-15HZ (945'FSL & 1513'FWL, SEC.14)
Area	COLORADO	Well	DOCHEFF 34N-15HZ
Field	WELD COUNTY (KERR MCGEE)	Wellbore	DOCHEFF 34N-15HZ PWB
Facility	SEC.14-T3N-R68W		

WELLPATH DATA (143 stations) † = interpolated/extrapolated station										
MD [ft]	Inclination [°]	Azimuth [°]	TVD [ft]	Vert Sect [ft]	North [ft]	East [ft]	Latitude	Longitude	DLS [°/100ft]	Comments
0.00†	0.000	214.600	0.00	0.00	0.00	0.00	40°13'17.494"N	104°58'27.181"W	0.00	
17.00	0.000	214.600	17.00	0.00	0.00	0.00	40°13'17.494"N	104°58'27.181"W	0.00	TIE ON
117.00†	0.000	214.600	117.00	0.00	0.00	0.00	40°13'17.494"N	104°58'27.181"W	0.00	
217.00†	0.000	214.600	217.00	0.00	0.00	0.00	40°13'17.494"N	104°58'27.181"W	0.00	
317.00†	0.000	214.600	317.00	0.00	0.00	0.00	40°13'17.494"N	104°58'27.181"W	0.00	
417.00†	0.000	214.600	417.00	0.00	0.00	0.00	40°13'17.494"N	104°58'27.181"W	0.00	
517.00†	0.000	214.600	517.00	0.00	0.00	0.00	40°13'17.494"N	104°58'27.181"W	0.00	
552.00†	0.000	214.600	552.00	0.00	0.00	0.00	40°13'17.494"N	104°58'27.181"W	0.00	BASE FOX HILLS
617.00†	0.000	214.600	617.00	0.00	0.00	0.00	40°13'17.494"N	104°58'27.181"W	0.00	
717.00†	0.000	214.600	717.00	0.00	0.00	0.00	40°13'17.494"N	104°58'27.181"W	0.00	
744.00†	0.000	214.600	744.00	0.00	0.00	0.00	40°13'17.494"N	104°58'27.181"W	0.00	SURFACE CSG SETTING DEPTH
817.00†	0.000	214.600	817.00	0.00	0.00	0.00	40°13'17.494"N	104°58'27.181"W	0.00	
917.00†	0.000	214.600	917.00	0.00	0.00	0.00	40°13'17.494"N	104°58'27.181"W	0.00	
1000.00	0.000	214.600	1000.00	0.00	0.00	0.00	40°13'17.494"N	104°58'27.181"W	0.00	BEGIN NUDGE
1017.00†	0.340	214.600	1017.00	0.03	-0.04	-0.03	40°13'17.494"N	104°58'27.181"W	2.00	
1117.00†	2.340	214.600	1116.97	1.39	-1.97	-1.36	40°13'17.475"N	104°58'27.198"W	2.00	
1217.00†	4.340	214.600	1216.79	4.77	-6.76	-4.66	40°13'17.427"N	104°58'27.241"W	2.00	
1317.00†	6.340	214.600	1316.35	10.17	-14.42	-9.95	40°13'17.351"N	104°58'27.309"W	2.00	
1417.00†	8.340	214.600	1415.53	17.59	-24.94	-17.20	40°13'17.248"N	104°58'27.403"W	2.00	
1500.00	10.000	214.600	1497.47	25.27	-35.83	-24.71	40°13'17.140"N	104°58'27.500"W	2.00	END NUDGE
1517.00†	10.000	214.600	1514.21	26.99	-38.25	-26.39	40°13'17.116"N	104°58'27.521"W	0.00	
1617.00†	10.000	214.600	1612.69	37.07	-52.55	-36.25	40°13'16.975"N	104°58'27.648"W	0.00	
1717.00†	10.000	214.600	1711.17	47.16	-66.84	-46.11	40°13'16.833"N	104°58'27.775"W	0.00	
1817.00†	10.000	214.600	1809.65	57.24	-81.14	-55.97	40°13'16.692"N	104°58'27.903"W	0.00	
1917.00†	10.000	214.600	1908.13	67.32	-95.43	-65.83	40°13'16.551"N	104°58'28.030"W	0.00	
2017.00†	10.000	214.600	2006.61	77.41	-109.72	-75.69	40°13'16.410"N	104°58'28.157"W	0.00	
2117.00†	10.000	214.600	2105.09	87.49	-124.02	-85.55	40°13'16.268"N	104°58'28.284"W	0.00	
2217.00†	10.000	214.600	2203.57	97.58	-138.31	-95.41	40°13'16.127"N	104°58'28.411"W	0.00	
2317.00†	10.000	214.600	2302.05	107.66	-152.60	-105.27	40°13'15.986"N	104°58'28.538"W	0.00	
2417.00†	10.000	214.600	2400.53	117.75	-166.90	-115.13	40°13'15.845"N	104°58'28.665"W	0.00	
2517.00†	10.000	214.600	2499.01	127.83	-181.19	-125.00	40°13'15.703"N	104°58'28.792"W	0.00	
2617.00†	10.000	214.600	2597.50	137.91	-195.48	-134.86	40°13'15.562"N	104°58'28.919"W	0.00	
2717.00†	10.000	214.600	2695.98	148.00	-209.78	-144.72	40°13'15.421"N	104°58'29.047"W	0.00	
2817.00†	10.000	214.600	2794.46	158.08	-224.07	-154.58	40°13'15.280"N	104°58'29.174"W	0.00	
2917.00†	10.000	214.600	2892.94	168.17	-238.37	-164.44	40°13'15.138"N	104°58'29.301"W	0.00	
3017.00†	10.000	214.600	2991.42	178.25	-252.66	-174.30	40°13'14.997"N	104°58'29.428"W	0.00	
3117.00†	10.000	214.600	3089.90	188.33	-266.95	-184.16	40°13'14.856"N	104°58'29.555"W	0.00	
3217.00†	10.000	214.600	3188.38	198.42	-281.25	-194.02	40°13'14.715"N	104°58'29.682"W	0.00	
3317.00†	10.000	214.600	3286.86	208.50	-295.54	-203.88	40°13'14.573"N	104°58'29.809"W	0.00	
3417.00†	10.000	214.600	3385.34	218.59	-309.83	-213.74	40°13'14.432"N	104°58'29.936"W	0.00	
3517.00†	10.000	214.600	3483.82	228.67	-324.13	-223.60	40°13'14.291"N	104°58'30.063"W	0.00	
3617.00†	10.000	214.600	3582.30	238.75	-338.42	-233.46	40°13'14.150"N	104°58'30.191"W	0.00	
3673.56†	10.000	214.600	3638.00	244.46	-346.50	-239.04	40°13'14.070"N	104°58'30.262"W	0.00	PARKMAN
3717.00†	10.000	214.600	3680.78	248.84	-352.71	-243.32	40°13'14.008"N	104°58'30.318"W	0.00	
3817.00†	10.000	214.600	3779.26	258.92	-367.01	-253.18	40°13'13.867"N	104°58'30.445"W	0.00	

REFERENCE WELLPATH IDENTIFICATION			
Operator	KERR-MCGEE OIL & GAS ONSHORE LP	Slot	SLOT#26 DOCHEFF 34N-15HZ (945'FSL & 1513'FWL, SEC.14)
Area	COLORADO	Well	DOCHEFF 34N-15HZ
Field	WELD COUNTY (KERR MCGEE)	Wellbore	DOCHEFF 34N-15HZ PWB
Facility	SEC.14-T3N-R68W		

WELLPATH DATA (143 stations) † = interpolated/extrapolated station										
MD [ft]	Inclination [°]	Azimuth [°]	TVD [ft]	Vert Sect [ft]	North [ft]	East [ft]	Latitude	Longitude	DLS [°/100ft]	Comments
3917.00†	10.000	214.600	3877.75	269.01	-381.30	-263.04	40°13'13.726"N	104°58'30.572"W	0.00	
4017.00†	10.000	214.600	3976.23	279.09	-395.60	-272.90	40°13'13.585"N	104°58'30.699"W	0.00	
4117.00†	10.000	214.600	4074.71	289.17	-409.89	-282.76	40°13'13.443"N	104°58'30.826"W	0.00	
4143.70†	10.000	214.600	4101.00	291.87	-413.71	-285.40	40°13'13.406"N	104°58'30.860"W	0.00	SUSSEX
4217.00†	10.000	214.600	4173.19	299.26	-424.18	-292.62	40°13'13.302"N	104°58'30.953"W	0.00	
4317.00†	10.000	214.600	4271.67	309.34	-438.48	-302.48	40°13'13.161"N	104°58'31.080"W	0.00	
4417.00†	10.000	214.600	4370.15	319.43	-452.77	-312.34	40°13'13.020"N	104°58'31.207"W	0.00	
4517.00†	10.000	214.600	4468.63	329.51	-467.06	-322.21	40°13'12.878"N	104°58'31.335"W	0.00	
4617.00†	10.000	214.600	4567.11	339.59	-481.36	-332.07	40°13'12.737"N	104°58'31.462"W	0.00	
4717.00†	10.000	214.600	4665.59	349.68	-495.65	-341.93	40°13'12.596"N	104°58'31.589"W	0.00	
4817.00†	10.000	214.600	4764.07	359.76	-509.94	-351.79	40°13'12.455"N	104°58'31.716"W	0.00	
4917.00†	10.000	214.600	4862.55	369.85	-524.24	-361.65	40°13'12.313"N	104°58'31.843"W	0.00	
5017.00†	10.000	214.600	4961.03	379.93	-538.53	-371.51	40°13'12.172"N	104°58'31.970"W	0.00	
5117.00†	10.000	214.600	5059.52	390.01	-552.83	-381.37	40°13'12.031"N	104°58'32.097"W	0.00	
5217.00†	10.000	214.600	5158.00	400.10	-567.12	-391.23	40°13'11.890"N	104°58'32.224"W	0.00	
5317.00†	10.000	214.600	5256.48	410.18	-581.41	-401.09	40°13'11.748"N	104°58'32.351"W	0.00	
5391.66	10.000	214.600	5330.00	417.71	-592.08	-408.45	40°13'11.643"N	104°58'32.446"W	0.00	BEGIN DROP
5417.00†	9.493	214.600	5354.98	420.20	-595.61	-410.89	40°13'11.608"N	104°58'32.478"W	2.00	
5517.00†	7.493	214.600	5453.87	428.78	-607.77	-419.27	40°13'11.488"N	104°58'32.586"W	2.00	
5617.00†	5.493	214.600	5553.23	435.35	-617.08	-425.69	40°13'11.396"N	104°58'32.669"W	2.00	
5717.00†	3.493	214.600	5652.92	439.89	-623.53	-430.14	40°13'11.332"N	104°58'32.726"W	2.00	
5817.00†	1.493	214.600	5752.82	442.42	-627.11	-432.61	40°13'11.297"N	104°58'32.758"W	2.00	
5891.66	0.000	269.099	5827.47	442.99	-627.91	-433.17	40°13'11.289"N	104°58'32.765"W	2.00	END DROP
5917.00†	0.000	269.099	5852.81	442.99	-627.91	-433.17	40°13'11.289"N	104°58'32.765"W	0.00	
6017.00†	0.000	269.099	5952.81	442.99	-627.91	-433.17	40°13'11.289"N	104°58'32.765"W	0.00	
6117.00†	0.000	269.099	6052.81	442.99	-627.91	-433.17	40°13'11.289"N	104°58'32.765"W	0.00	
6217.00†	0.000	269.099	6152.81	442.99	-627.91	-433.17	40°13'11.289"N	104°58'32.765"W	0.00	
6317.00†	0.000	269.099	6252.81	442.99	-627.91	-433.17	40°13'11.289"N	104°58'32.765"W	0.00	
6417.00†	0.000	269.099	6352.81	442.99	-627.91	-433.17	40°13'11.289"N	104°58'32.765"W	0.00	
6517.00†	0.000	269.099	6452.81	442.99	-627.91	-433.17	40°13'11.289"N	104°58'32.765"W	0.00	
6598.25	0.000	269.099	6534.06	442.99	-627.91	-433.17	40°13'11.289"N	104°58'32.765"W	0.00	KOP, BUILD @ 10°/100'
6617.00†	1.875	269.099	6552.80	443.29	-627.91	-433.47	40°13'11.289"N	104°58'32.769"W	10.00	
6717.00†	11.875	269.099	6651.96	455.25	-628.10	-445.43	40°13'11.287"N	104°58'32.923"W	10.00	
6817.00†	21.875	269.099	6747.53	484.24	-628.56	-474.41	40°13'11.283"N	104°58'33.297"W	10.00	
6917.00†	31.875	269.099	6836.62	529.39	-629.27	-519.56	40°13'11.276"N	104°58'33.879"W	10.00	
7017.00†	41.875	269.099	6916.51	589.32	-630.21	-579.48	40°13'11.266"N	104°58'34.651"W	10.00	
7082.98†	48.474	269.099	6963.00	636.09	-630.94	-626.25	40°13'11.259"N	104°58'35.254"W	10.00	SHARON SPRINGS
7117.00†	51.875	269.099	6984.78	662.21	-631.35	-652.37	40°13'11.255"N	104°58'35.591"W	10.00	
7201.76†	60.352	269.099	7032.00	732.51	-632.46	-722.66	40°13'11.244"N	104°58'36.497"W	10.00	NIOBRARA
7217.00†	61.875	269.099	7039.36	745.85	-632.67	-736.00	40°13'11.242"N	104°58'36.669"W	10.00	
7317.00†	71.875	269.099	7078.58	837.70	-634.11	-827.83	40°13'11.228"N	104°58'37.853"W	10.00	
7346.37†	74.812	269.099	7087.00	865.84	-634.56	-855.97	40°13'11.223"N	104°58'38.215"W	10.00	NIOBRARA B
7417.00†	81.875	269.099	7101.26	934.97	-635.64	-925.09	40°13'11.212"N	104°58'39.106"W	10.00	
7501.49	90.325	269.099	7107.00	1019.19	-636.97	-1009.30	40°13'11.199"N	104°58'40.192"W	10.00	LANDING POINT
7517.00†	90.325	269.099	7106.92	1034.70	-637.21	-1024.80	40°13'11.197"N	104°58'40.392"W	0.00	

REFERENCE WELLPATH IDENTIFICATION			
Operator	KERR-MCGEE OIL & GAS ONSHORE LP	Slot	SLOT#26 DOCHEFF 34N-15HZ (945'FSL & 1513'FWL, SEC.14)
Area	COLORADO	Well	DOCHEFF 34N-15HZ
Field	WELD COUNTY (KERR MCGEE)	Wellbore	DOCHEFF 34N-15HZ PWB
Facility	SEC.14-T3N-R68W		

WELLPATH DATA (143 stations) † = interpolated/extrapolated station										
MD [ft]	Inclination [°]	Azimuth [°]	TVD [ft]	Vert Sect [ft]	North [ft]	East [ft]	Latitude	Longitude	DLS [°/100ft]	Comments
7617.00†	90.325	269.099	7106.35	1134.69	-638.78	-1124.79	40°13'11.181"N	104°58'41.681"W	0.00	
7717.00†	90.325	269.099	7105.78	1234.69	-640.35	-1224.77	40°13'11.166"N	104°58'42.970"W	0.00	
7817.00†	90.325	269.099	7105.22	1334.69	-641.92	-1324.76	40°13'11.150"N	104°58'44.259"W	0.00	
7917.00†	90.325	269.099	7104.65	1434.69	-643.50	-1424.75	40°13'11.135"N	104°58'45.547"W	0.00	
8017.00†	90.325	269.099	7104.08	1534.69	-645.07	-1524.73	40°13'11.119"N	104°58'46.836"W	0.00	
8117.00†	90.325	269.099	7103.52	1634.69	-646.64	-1624.72	40°13'11.103"N	104°58'48.125"W	0.00	
8217.00†	90.325	269.099	7102.95	1734.68	-648.21	-1724.70	40°13'11.088"N	104°58'49.414"W	0.00	
8317.00†	90.325	269.099	7102.38	1834.68	-649.78	-1824.69	40°13'11.072"N	104°58'50.703"W	0.00	
8417.00†	90.325	269.099	7101.82	1934.68	-651.36	-1924.68	40°13'11.057"N	104°58'51.992"W	0.00	
8517.00†	90.325	269.099	7101.25	2034.68	-652.93	-2024.66	40°13'11.041"N	104°58'53.281"W	0.00	
8617.00†	90.325	269.099	7100.68	2134.68	-654.50	-2124.65	40°13'11.025"N	104°58'54.570"W	0.00	
8717.00†	90.325	269.099	7100.12	2234.68	-656.07	-2224.63	40°13'11.010"N	104°58'55.859"W	0.00	
8817.00†	90.325	269.099	7099.55	2334.67	-657.64	-2324.62	40°13'10.994"N	104°58'57.148"W	0.00	
8917.00†	90.325	269.099	7098.98	2434.67	-659.21	-2424.61	40°13'10.979"N	104°58'58.437"W	0.00	
9017.00†	90.325	269.099	7098.42	2534.67	-660.79	-2524.59	40°13'10.963"N	104°58'59.726"W	0.00	
9117.00†	90.325	269.099	7097.85	2634.67	-662.36	-2624.58	40°13'10.947"N	104°59'01.015"W	0.00	
9217.00†	90.325	269.099	7097.28	2734.67	-663.93	-2724.56	40°13'10.932"N	104°59'02.303"W	0.00	
9317.00†	90.325	269.099	7096.72	2834.67	-665.50	-2824.55	40°13'10.916"N	104°59'03.592"W	0.00	
9417.00†	90.325	269.099	7096.15	2934.66	-667.07	-2924.54	40°13'10.900"N	104°59'04.881"W	0.00	
9517.00†	90.325	269.099	7095.58	3034.66	-668.65	-3024.52	40°13'10.885"N	104°59'06.170"W	0.00	
9617.00†	90.325	269.099	7095.02	3134.66	-670.22	-3124.51	40°13'10.869"N	104°59'07.459"W	0.00	
9717.00†	90.325	269.099	7094.45	3234.66	-671.79	-3224.49	40°13'10.853"N	104°59'08.748"W	0.00	
9817.00†	90.325	269.099	7093.88	3334.66	-673.36	-3324.48	40°13'10.838"N	104°59'10.037"W	0.00	
9917.00†	90.325	269.099	7093.32	3434.66	-674.93	-3424.47	40°13'10.822"N	104°59'11.326"W	0.00	
10017.00†	90.325	269.099	7092.75	3534.65	-676.50	-3524.45	40°13'10.806"N	104°59'12.615"W	0.00	
10117.00†	90.325	269.099	7092.18	3634.65	-678.08	-3624.44	40°13'10.791"N	104°59'13.904"W	0.00	
10217.00†	90.325	269.099	7091.62	3734.65	-679.65	-3724.42	40°13'10.775"N	104°59'15.193"W	0.00	
10317.00†	90.325	269.099	7091.05	3834.65	-681.22	-3824.41	40°13'10.759"N	104°59'16.482"W	0.00	
10417.00†	90.325	269.099	7090.48	3934.65	-682.79	-3924.40	40°13'10.744"N	104°59'17.771"W	0.00	
10517.00†	90.325	269.099	7089.92	4034.65	-684.36	-4024.38	40°13'10.728"N	104°59'19.059"W	0.00	
10617.00†	90.325	269.099	7089.35	4134.65	-685.94	-4124.37	40°13'10.712"N	104°59'20.348"W	0.00	
10717.00†	90.325	269.099	7088.78	4234.64	-687.51	-4224.36	40°13'10.697"N	104°59'21.637"W	0.00	
10817.00†	90.325	269.099	7088.22	4334.64	-689.08	-4324.34	40°13'10.681"N	104°59'22.926"W	0.00	
10917.00†	90.325	269.099	7087.65	4434.64	-690.65	-4424.33	40°13'10.665"N	104°59'24.215"W	0.00	
11017.00†	90.325	269.099	7087.08	4534.64	-692.22	-4524.31	40°13'10.649"N	104°59'25.504"W	0.00	
11117.00†	90.325	269.099	7086.52	4634.64	-693.80	-4624.30	40°13'10.634"N	104°59'26.793"W	0.00	
11217.00†	90.325	269.099	7085.95	4734.64	-695.37	-4724.29	40°13'10.618"N	104°59'28.082"W	0.00	
11317.00†	90.325	269.099	7085.38	4834.63	-696.94	-4824.27	40°13'10.602"N	104°59'29.371"W	0.00	
11417.00†	90.325	269.099	7084.82	4934.63	-698.51	-4924.26	40°13'10.587"N	104°59'30.660"W	0.00	
11517.00†	90.325	269.099	7084.25	5034.63	-700.08	-5024.24	40°13'10.571"N	104°59'31.949"W	0.00	
11617.00†	90.325	269.099	7083.68	5134.63	-701.65	-5124.23	40°13'10.555"N	104°59'33.238"W	0.00	
11717.00†	90.325	269.099	7083.12	5234.63	-703.23	-5224.22	40°13'10.539"N	104°59'34.526"W	0.00	
11817.00†	90.325	269.099	7082.55	5334.63	-704.80	-5324.20	40°13'10.524"N	104°59'35.815"W	0.00	
11917.00†	90.325	269.099	7081.98	5434.62	-706.37	-5424.19	40°13'10.508"N	104°59'37.104"W	0.00	
12017.00†	90.325	269.099	7081.42	5534.62	-707.94	-5524.17	40°13'10.492"N	104°59'38.393"W	0.00	

REFERENCE WELLPATH IDENTIFICATION			
Operator	KERR-MCGEE OIL & GAS ONSHORE LP	Slot	SLOT#26 DOCHEFF 34N-15HZ (945'FSL & 1513'FWL, SEC.14)
Area	COLORADO	Well	DOCHEFF 34N-15HZ
Field	WELD COUNTY (KERR MCGEE)	Wellbore	DOCHEFF 34N-15HZ PWB
Facility	SEC.14-T3N-R68W		

WELLPATH DATA (143 stations) † = interpolated/extrapolated station										
MD [ft]	Inclination [°]	Azimuth [°]	TVD [ft]	Vert Sect [ft]	North [ft]	East [ft]	Latitude	Longitude	DLS [°/100ft]	Comments
12117.00†	90.325	269.099	7080.85	5634.62	-709.51	-5624.16	40°13'10.476"N	104°59'39.682"W	0.00	
12217.00†	90.325	269.099	7080.28	5734.62	-711.09	-5724.15	40°13'10.461"N	104°59'40.971"W	0.00	
12317.00†	90.325	269.099	7079.72	5834.62	-712.66	-5824.13	40°13'10.445"N	104°59'42.260"W	0.00	
12417.00†	90.325	269.099	7079.15	5934.62	-714.23	-5924.12	40°13'10.429"N	104°59'43.549"W	0.00	
12517.00†	90.325	269.099	7078.58	6034.61	-715.80	-6024.10	40°13'10.413"N	104°59'44.838"W	0.00	
12617.00†	90.325	269.099	7078.02	6134.61	-717.37	-6124.09	40°13'10.397"N	104°59'46.127"W	0.00	
12717.00†	90.325	269.099	7077.45	6234.61	-718.94	-6224.08	40°13'10.382"N	104°59'47.416"W	0.00	
12796.22	90.325	269.099	7077.00 ¹	6313.83	-720.19	-6303.29	40°13'10.369"N	104°59'48.437"W	0.00	TOTAL DEPTH

HOLE & CASING SECTIONS - Ref Wellbore: DOCHEFF 34N-15HZ PWB Ref Wellpath: DOCHEFF 34N-15HZ (PERMIT REV-1) PWP									
String/Diameter	Start MD [ft]	End MD [ft]	Interval [ft]	Start TVD [ft]	End TVD [ft]	Start N/S [ft]	Start E/W [ft]	End N/S [ft]	End E/W [ft]
13.5in Open Hole	17.00	744.00	727.00	17.00	744.00	0.00	0.00	0.00	0.00
9.625in Casing Surface	17.00	744.00	727.00	17.00	744.00	0.00	0.00	0.00	0.00
8.75in Open Hole	744.00	7501.49	6757.49	744.00	7107.00	0.00	0.00	-636.97	-1009.29
7in Casing Intermediate	17.00	7501.49	7484.49	17.00	7107.00	0.00	0.00	-636.97	-1009.29
6.125in Open Hole	7501.49	12796.22	5294.73	7107.00	7077.00	-636.97	-1009.29	-720.19	-6303.28
4.5in Casing Production	17.00	12796.22	12779.22	17.00	7077.00	0.00	0.00	-720.19	-6303.28

REFERENCE WELLPATH IDENTIFICATION			
Operator	KERR-MCGEE OIL & GAS ONSHORE LP	Slot	SLOT#26 DOCHEFF 34N-15HZ (945'FSL & 1513'FWL, SEC.14)
Area	COLORADO	Well	DOCHEFF 34N-15HZ
Field	WELD COUNTY (KERR MCGEE)	Wellbore	DOCHEFF 34N-15HZ PWB
Facility	SEC.14-T3N-R68W		

TARGETS									
Name	MD [ft]	TVD [ft]	North [ft]	East [ft]	Grid East [US ft]	Grid North [US ft]	Latitude	Longitude	Shape
SEC.15-T3N-R68W SECTION LINES		1.00	1283.76	174.76	3146987.81	1325264.06	40°13'30.180"N	104°58'24.928"W	polygon
SEC.13-T3N-R68W SECTION LINES		4952.00	3517.96	8446.53	3155245.81	1327547.17	40°13'52.244"N	104°56'38.278"W	polygon
SEC.14-T3N-R68W SECTION LINES		4952.00	3517.96	8446.53	3155245.81	1327547.17	40°13'52.244"N	104°56'38.278"W	polygon
1) DOCHEFF 34N-15HZ BHL ON PLAT REV-1 (310'FSL & 460'FWL, SEC.15)	12796.22	7077.00	-720.19	-6303.29	3140522.04	1323221.83	40°13'10.369"N	104°59'48.437"W	point
DOCHEFF 34N-15HZ LANDBOX		7077.00	0.00	0.00	3146820.67	1323979.35	40°13'17.494"N	104°58'27.181"W	polygon

SURVEY PROGRAM - Ref Wellbore: DOCHEFF 34N-15HZ PWB Ref Wellpath: DOCHEFF 34N-15HZ (PERMIT REV-1) PWP				
Start MD [ft]	End MD [ft]	Positional Uncertainty Model	Log Name/Comment	Wellbore
17.00	12796.22	NaviTrak (IFR)_1		DOCHEFF 34N-15HZ PWB

REFERENCE WELLPATH IDENTIFICATION				
Operator	KERR-MCGEE OIL & GAS ONSHORE LP	Slot	SLOT#26 DOCHEFF 34N-15HZ (945'FSL & 1513'FWL, SEC.14)	
Area	COLORADO	Well	DOCHEFF 34N-15HZ	
Field	WELD COUNTY (KERR MCGEE)	Wellbore	DOCHEFF 34N-15HZ PWB	
Facility	SEC.14-T3N-R68W			

WELLPATH COMMENTS				
MD [ft]	Inclination [°]	Azimuth [°]	TVD [ft]	Comment
552.00	0.000	214.600	552.00	BASE FOX HILLS
744.00	0.000	214.600	744.00	SURFACE CSG SETTING DEPTH
3673.56	10.000	214.600	3638.00	PARKMAN
4143.70	10.000	214.600	4101.00	SUSSEX
7082.98	48.474	269.099	6963.00	SHARON SPRINGS
7201.76	60.352	269.099	7032.00	NIOBRARA
7346.37	74.812	269.099	7087.00	NIOBRARA B

DESIGN COMMENTS				
MD [ft]	Inclination [°]	Azimuth [°]	TVD [ft]	Comment
17.00	0.000	214.600	17.00	TIE ON
1000.00	0.000	214.600	1000.00	BEGIN NUDGE
1500.00	10.000	214.600	1497.47	END NUDGE
5391.66	10.000	214.600	5330.00	BEGIN DROP
5891.66	0.000	269.099	5827.47	END DROP
6598.25	0.000	269.099	6534.06	KOP, BUILD @ 10°/100'
7501.49	90.325	269.099	7107.00	LANDING POINT
12796.22	90.325	269.099	7077.00	TOTAL DEPTH