

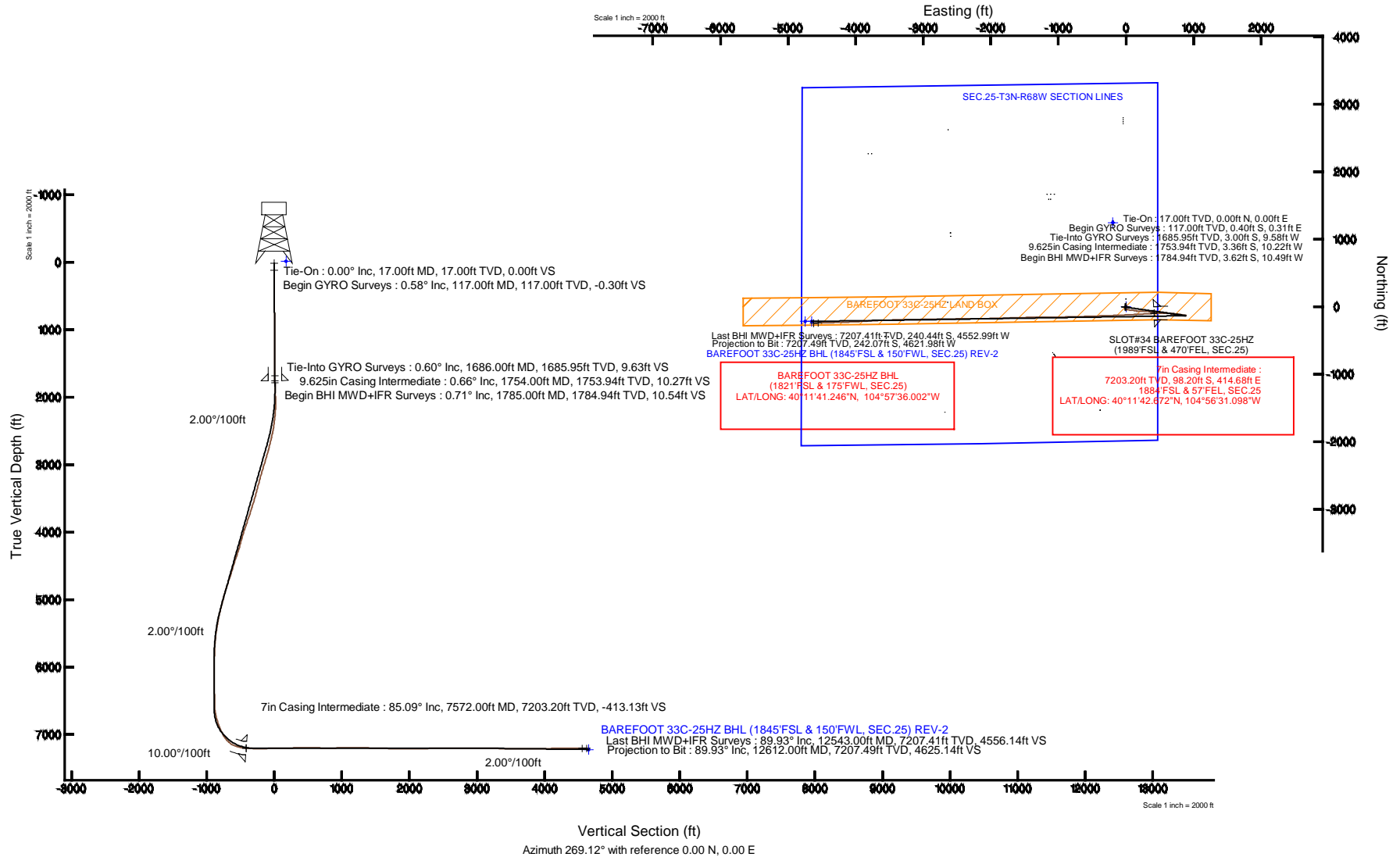
KERR-MCGEE OIL & GAS ONSHORE LP

Location: COLORADO Slot: SLOT#34 BAREFOOT 33C-25HZ (1989FSL & 470'FEL, SEC.25)
 Field: WELD COUNTY (KERR MCGEE) Well: BAREFOOT 33C-25HZ
 Facility: SEC.25-T3N-R68W Wellbore: BAREFOOT 33C-25HZ PWB



Plot reference wellpath is BAREFOOT 33C-25HZ (REV-C.0) PWB

True vertical depths are referenced to XTREME 8 (17KB) (RKB)	Grid System: NAD83 / Lambert Colorado SP, Northern Zone (501), US feet
Measured depths are referenced to XTREME 8 (17KB) (RKB)	North Reference: True north
XTREME 8 (17KB) (RKB) to Mean Sea Level: 4888 feet	Scale: True distance
Mean Sea Level to Mud line (At Slot: SLOT#34 BAREFOOT 33C-25HZ (1989FSL & 470'FEL, SEC.25)): 0 feet	Depths are in feet
Coordinates are in feet referenced to Slot	Created by: precin on 12/Sep/2014



Actual Wellpath Report

BAREFOOT 33C-25HZ AWP

Page 1 of 7

REFERENCE WELLPATH IDENTIFICATION			
Operator	KERR-MCGEE OIL & GAS ONSHORE LP	Slot	SLOT#34 BAREFOOT 33C-25HZ (1989'FSL & 470'FEL, SEC.25)
Area	COLORADO	Well	BAREFOOT 33C-25HZ
Field	WELD COUNTY (KERR MCGEE)	Wellbore	BAREFOOT 33C-25HZ AWB
Facility	SEC.25-T3N-R68W		

REPORT SETUP INFORMATION			
Projection System	NAD83 / Lambert Colorado SP, Northern Zone (501), US feet	Software System	WellArchitect® 4.0.0
North Reference	True	User	Precain
Scale	0.999957	Report Generated	12/Sep/2014 at 12:54
Convergence at slot	n/a	Database/Source file	WellArchitectDB/BAREFOOT_33C-25HZ_AWB.xml

WELLPATH LOCATION						
	Local coordinates		Grid coordinates		Geographic coordinates	
	North[ft]	East[ft]	Easting[US ft]	Northing[US ft]	Latitude	Longitude
Slot Location	-1684.45	1059.88	3155469.88	1314535.08	40°11'43.642"N	104°56'36.442"W
Facility Reference Pt			3154399.57	1316212.82	40°12'00.288"N	104°56'50.100"W
Field Reference Pt			3197771.84	1268891.29	40°04'09.600"N	104°47'36.000"W

WELLPATH DATUM			
Calculation method	Minimum curvature	XTREME 8 (17'KB) (RKB) to Facility Vertical Datum	4888.00ft
Horizontal Reference Pt	Slot	XTREME 8 (17'KB) (RKB) to Mean Sea Level	4888.00ft
Vertical Reference Pt	XTREME 8 (17'KB) (RKB)	XTREME 8 (17'KB) (RKB) to Mud Line at Slot (SLOT#34 BAREFOOT 33C-25HZ (1989'FSL & 470'FEL, SEC.25))	4888.00ft
MD Reference Pt	XTREME 8 (17'KB) (RKB)	Section Origin	N 0.00, E 0.00 ft
Field Vertical Reference	Mean Sea Level	Section Azimuth	269.12°

REFERENCE WELLPATH IDENTIFICATION			
Operator	KERR-MCGEE OIL & GAS ONSHORE LP	Slot	SLOT#34 BAREFOOT 33C-25HZ (1989'FSL & 470'FEL, SEC.25)
Area	COLORADO	Well	BAREFOOT 33C-25HZ
Field	WELD COUNTY (KERR MCGEE)	Wellbore	BAREFOOT 33C-25HZ AWP
Facility	SEC.25-T3N-R68W		

WELLPATH DATA (146 stations) † = interpolated/extrapolated station

MD [ft]	Inclination [°]	Azimuth [°]	TVD [ft]	Vert Sect [ft]	North [ft]	East [ft]	Latitude	Longitude	DLS [°/100ft]	Comments
0.00†	0.000	142.550	0.00	0.00	0.00	0.00	40°11'43.642"N	104°56'36.442"W	0.00	
17.00	0.000	142.550	17.00	0.00	0.00	0.00	40°11'43.642"N	104°56'36.442"W	0.00	Tie-On
117.00	0.580	142.550	117.00	-0.30	-0.40	0.31	40°11'43.638"N	104°56'36.438"W	0.58	Begin GYRO Surveys
217.00	0.080	181.020	217.00	-0.60	-0.87	0.61	40°11'43.633"N	104°56'36.434"W	0.52	
317.00	0.140	270.970	317.00	-0.48	-0.94	0.49	40°11'43.633"N	104°56'36.436"W	0.16	
417.00	0.390	294.510	417.00	-0.05	-0.80	0.06	40°11'43.634"N	104°56'36.441"W	0.27	
517.00	0.570	277.930	516.99	0.75	-0.59	-0.74	40°11'43.636"N	104°56'36.452"W	0.23	
617.00	0.650	265.320	616.99	1.81	-0.57	-1.80	40°11'43.636"N	104°56'36.465"W	0.16	
717.00	0.650	259.450	716.98	2.93	-0.72	-2.92	40°11'43.635"N	104°56'36.480"W	0.07	
817.00	0.700	246.860	816.97	4.06	-1.06	-4.04	40°11'43.632"N	104°56'36.494"W	0.16	
917.00	0.650	234.930	916.97	5.09	-1.63	-5.07	40°11'43.626"N	104°56'36.507"W	0.15	
1017.00	0.550	225.860	1016.96	5.91	-2.29	-5.88	40°11'43.619"N	104°56'36.518"W	0.14	
1117.00	0.430	228.190	1116.96	6.55	-2.87	-6.50	40°11'43.614"N	104°56'36.526"W	0.12	
1217.00	0.160	259.690	1216.96	6.97	-3.15	-6.92	40°11'43.611"N	104°56'36.531"W	0.31	
1317.00	0.220	278.370	1316.95	7.29	-3.14	-7.25	40°11'43.611"N	104°56'36.535"W	0.09	
1417.00	0.220	297.750	1416.95	7.65	-3.03	-7.61	40°11'43.612"N	104°56'36.540"W	0.07	
1517.00	0.370	277.150	1516.95	8.14	-2.90	-8.10	40°11'43.613"N	104°56'36.546"W	0.18	
1617.00	0.560	268.080	1616.95	8.95	-2.87	-8.91	40°11'43.614"N	104°56'36.557"W	0.20	
1686.00	0.600	251.380	1685.95	9.63	-3.00	-9.58	40°11'43.612"N	104°56'36.566"W	0.25	Tie-Into GYRO Surveys
1785.00	0.710	222.210	1784.94	10.54	-3.62	-10.49	40°11'43.606"N	104°56'36.577"W	0.35	Begin BHI MWD-IFR Surveys
1875.00	2.620	227.440	1874.90	12.46	-5.42	-12.38	40°11'43.588"N	104°56'36.602"W	2.13	
1967.00	3.980	235.470	1966.74	16.69	-8.65	-16.56	40°11'43.556"N	104°56'36.655"W	1.56	
2150.00	4.340	153.790	2149.40	19.01	-18.47	-18.73	40°11'43.459"N	104°56'36.683"W	2.98	
2241.00	6.490	136.500	2239.99	14.06	-25.30	-13.67	40°11'43.392"N	104°56'36.618"W	2.94	
2332.00	7.450	120.830	2330.33	5.55	-32.05	-5.06	40°11'43.325"N	104°56'36.507"W	2.33	
2424.00	9.080	107.580	2421.38	-6.41	-37.30	6.98	40°11'43.273"N	104°56'36.352"W	2.71	
2515.00	11.340	103.670	2510.93	-21.88	-41.58	22.52	40°11'43.231"N	104°56'36.152"W	2.60	
2607.00	13.490	101.030	2600.77	-41.14	-45.78	41.84	40°11'43.190"N	104°56'35.903"W	2.42	
2699.00	14.280	97.580	2690.09	-62.86	-49.33	63.62	40°11'43.155"N	104°56'35.622"W	1.24	
2790.00	14.620	95.260	2778.21	-85.38	-51.86	86.19	40°11'43.130"N	104°56'35.331"W	0.74	
2882.00	15.960	97.870	2866.95	-109.43	-54.65	110.28	40°11'43.102"N	104°56'35.021"W	1.64	
2974.00	17.380	101.440	2955.09	-135.36	-59.11	136.28	40°11'43.058"N	104°56'34.686"W	1.90	
3066.00	18.000	97.820	3042.74	-162.83	-63.77	163.83	40°11'43.012"N	104°56'34.331"W	1.37	
3158.00	15.450	91.870	3130.84	-189.13	-66.11	190.17	40°11'42.989"N	104°56'33.991"W	3.34	
3250.00	14.900	89.760	3219.64	-213.20	-66.46	214.24	40°11'42.985"N	104°56'33.681"W	0.85	
3342.00	15.410	89.390	3308.44	-237.25	-66.28	238.29	40°11'42.987"N	104°56'33.371"W	0.56	
3427.00	14.320	86.600	3390.59	-259.05	-65.53	260.08	40°11'42.994"N	104°56'33.091"W	1.53	
3514.00	15.090	87.640	3474.74	-281.12	-64.43	282.13	40°11'43.005"N	104°56'32.806"W	0.94	
3599.00	17.950	95.790	3556.24	-305.19	-65.30	306.23	40°11'42.997"N	104°56'32.496"W	4.32	
3684.00	17.380	100.740	3637.23	-330.64	-68.98	331.73	40°11'42.960"N	104°56'32.167"W	1.89	
3769.00	17.640	95.740	3718.30	-355.87	-72.64	357.02	40°11'42.924"N	104°56'31.841"W	1.80	
3857.00	19.470	97.370	3801.72	-383.63	-75.85	384.84	40°11'42.892"N	104°56'31.483"W	2.16	
3942.00	19.830	99.420	3881.77	-411.84	-80.03	413.11	40°11'42.851"N	104°56'31.119"W	0.91	
4027.00	18.220	95.610	3962.13	-439.23	-83.69	440.56	40°11'42.815"N	104°56'30.765"W	2.39	
4112.00	15.780	86.260	4043.42	-463.98	-84.23	465.33	40°11'42.810"N	104°56'30.446"W	4.30	

Actual Wellpath Report

BAREFOOT 33C-25HZ AWP

Page 3 of 7

REFERENCE WELLPATH IDENTIFICATION			
Operator	KERR-MCGEE OIL & GAS ONSHORE LP	Slot	SLOT#34 BAREFOOT 33C-25HZ (1989'FSL & 470'FEL, SEC.25)
Area	COLORADO	Well	BAREFOOT 33C-25HZ
Field	WELD COUNTY (KERR MCGEE)	Wellbore	BAREFOOT 33C-25HZ AWP
Facility	SEC.25-T3N-R68W		

WELLPATH DATA (146 stations) † = interpolated/extrapolated station

MD [ft]	Inclination [°]	Azimuth [°]	TVD [ft]	Vert Sect [ft]	North [ft]	East [ft]	Latitude	Longitude	DLS [°/100ft]	Comments
4199.00	15.950	83.440	4127.11	-487.69	-82.10	489.01	40°11'42.831"N	104°56'30.140"W	0.91	
4285.00	15.660	90.190	4209.87	-511.06	-80.78	512.35	40°11'42.844"N	104°56'29.840"W	2.16	
4370.00	19.190	96.990	4290.96	-536.38	-82.52	537.70	40°11'42.826"N	104°56'29.513"W	4.79	
4457.00	18.100	97.280	4373.40	-563.92	-85.98	565.30	40°11'42.792"N	104°56'29.157"W	1.26	
4542.00	17.690	98.170	4454.28	-589.74	-89.48	591.18	40°11'42.758"N	104°56'28.824"W	0.58	
4627.00	17.050	95.350	4535.41	-614.88	-92.48	616.37	40°11'42.728"N	104°56'28.499"W	1.24	
4712.00	17.170	99.720	4616.65	-639.61	-95.76	641.15	40°11'42.696"N	104°56'28.180"W	1.52	
4798.00	18.320	99.710	4698.56	-665.37	-100.18	666.98	40°11'42.652"N	104°56'27.847"W	1.34	
4883.00	19.130	97.930	4779.06	-692.27	-104.36	693.94	40°11'42.611"N	104°56'27.500"W	1.17	
4970.00	17.220	97.570	4861.71	-719.09	-108.02	720.83	40°11'42.574"N	104°56'27.153"W	2.20	
5057.00	15.350	95.370	4945.22	-743.28	-110.80	745.06	40°11'42.547"N	104°56'26.841"W	2.26	
5143.00	13.750	89.650	5028.46	-764.82	-111.80	766.62	40°11'42.537"N	104°56'26.563"W	2.50	
5228.00	14.420	93.910	5110.91	-785.47	-112.46	787.28	40°11'42.531"N	104°56'26.297"W	1.45	
5313.00	13.550	100.390	5193.39	-805.78	-114.98	807.64	40°11'42.506"N	104°56'26.034"W	2.11	
5400.00	10.840	100.470	5278.42	-823.80	-118.30	825.71	40°11'42.473"N	104°56'25.802"W	3.12	
5487.00	10.440	104.350	5363.93	-839.43	-121.74	841.39	40°11'42.439"N	104°56'25.600"W	0.94	
5572.00	9.090	103.620	5447.69	-853.36	-125.23	855.38	40°11'42.404"N	104°56'25.419"W	1.59	
5657.00	6.860	99.000	5531.87	-864.86	-127.61	866.92	40°11'42.381"N	104°56'25.271"W	2.73	
5743.00	4.760	96.090	5617.42	-873.47	-128.79	875.54	40°11'42.369"N	104°56'25.159"W	2.46	
5830.00	3.470	85.800	5704.20	-879.68	-128.98	881.76	40°11'42.367"N	104°56'25.079"W	1.70	
5915.00	1.810	105.150	5789.11	-883.54	-129.14	885.62	40°11'42.366"N	104°56'25.030"W	2.19	
6001.00	0.720	152.220	5875.08	-885.09	-129.98	887.18	40°11'42.357"N	104°56'25.009"W	1.65	
6345.00	0.350	340.550	6219.08	-885.73	-130.90	887.84	40°11'42.348"N	104°56'25.001"W	0.31	
6690.00	1.140	259.110	6564.05	-882.01	-130.55	884.12	40°11'42.352"N	104°56'25.049"W	0.33	
6733.00	4.200	268.210	6607.00	-880.02	-130.68	882.12	40°11'42.350"N	104°56'25.075"W	7.16	
6775.00	7.690	275.690	6648.77	-875.69	-130.45	877.79	40°11'42.353"N	104°56'25.130"W	8.49	
6860.00	13.630	266.570	6732.27	-860.02	-130.49	862.12	40°11'42.352"N	104°56'25.332"W	7.24	
6946.00	18.110	276.400	6814.99	-836.62	-129.60	838.70	40°11'42.361"N	104°56'25.634"W	6.06	
6988.00	20.560	280.810	6854.62	-822.92	-127.49	824.97	40°11'42.382"N	104°56'25.811"W	6.79	
7031.00	22.100	283.610	6894.67	-807.69	-124.17	809.69	40°11'42.415"N	104°56'26.008"W	4.29	
7073.00	23.610	281.570	6933.37	-791.83	-120.63	793.77	40°11'42.450"N	104°56'26.213"W	4.06	
7117.00	26.520	280.680	6973.22	-773.60	-117.04	775.48	40°11'42.485"N	104°56'26.449"W	6.67	
7162.00	30.800	280.360	7012.70	-752.44	-113.10	754.26	40°11'42.524"N	104°56'26.722"W	9.52	
7206.00	35.570	279.520	7049.52	-728.79	-108.96	730.55	40°11'42.565"N	104°56'27.028"W	10.89	
7250.00	40.780	279.480	7084.09	-702.05	-104.47	703.73	40°11'42.610"N	104°56'27.373"W	11.84	
7294.00	48.400	277.160	7115.41	-671.58	-100.05	673.19	40°11'42.653"N	104°56'27.767"W	17.71	
7338.00	57.250	273.940	7141.97	-636.78	-96.72	638.33	40°11'42.686"N	104°56'28.216"W	20.94	
7381.00	66.880	270.900	7162.10	-598.90	-95.16	600.43	40°11'42.702"N	104°56'28.705"W	23.25	
7424.00	74.090	270.620	7176.45	-558.41	-94.63	559.93	40°11'42.707"N	104°56'29.227"W	16.78	
7466.00	76.990	269.060	7186.94	-517.75	-94.74	519.26	40°11'42.706"N	104°56'29.751"W	7.79	
7509.00	80.190	268.360	7195.44	-475.61	-95.69	477.13	40°11'42.696"N	104°56'30.294"W	7.61	
7526.00	82.090	267.960	7198.06	-458.82	-96.23	460.34	40°11'42.691"N	104°56'30.510"W	11.42	
7572.00†	85.085	267.097	7203.20	-413.13	-98.20	414.68	40°11'42.672"N	104°56'31.098"W	6.77	7" Casing Point
7610.00	87.560	266.390	7205.64	-375.24	-100.36	376.82	40°11'42.650"N	104°56'31.586"W	6.77	
7653.00	87.320	266.810	7207.56	-332.33	-102.91	333.94	40°11'42.625"N	104°56'32.139"W	1.12	

Actual Wellpath Report

BAREFOOT 33C-25HZ AWP

Page 4 of 7

REFERENCE WELLPATH IDENTIFICATION

Operator	KERR-MCGEE OIL & GAS ONSHORE LP	Slot	SLOT#34 BAREFOOT 33C-25HZ (1989'FSL & 470'FEL, SEC.25)
Area	COLORADO	Well	BAREFOOT 33C-25HZ
Field	WELD COUNTY (KERR MCGEE)	Wellbore	BAREFOOT 33C-25HZ AWB
Facility	SEC.25-T3N-R68W		

WELLPATH DATA (146 stations)

MD [ft]	Inclination [°]	Azimuth [°]	TVD [ft]	Vert Sect [ft]	North [ft]	East [ft]	Latitude	Longitude	DLS [°/100ft]	Comments
7738.00	89.590	266.600	7209.85	-247.44	-107.79	249.12	40°11'42.577"N	104°56'33.232"W	2.68	
7823.00	91.260	267.000	7209.22	-162.51	-112.54	164.26	40°11'42.530"N	104°56'34.325"W	2.02	
7908.00	91.200	267.060	7207.39	-77.59	-116.94	79.39	40°11'42.486"N	104°56'35.419"W	0.10	
7993.00	90.980	267.290	7205.78	7.35	-121.13	-5.49	40°11'42.445"N	104°56'36.513"W	0.37	
8166.00	91.100	267.470	7202.64	180.24	-129.03	-178.28	40°11'42.367"N	104°56'38.739"W	0.13	
8251.00	91.530	268.020	7200.69	265.19	-132.38	-263.19	40°11'42.334"N	104°56'39.834"W	0.82	
8339.00	90.580	268.340	7199.07	353.16	-135.17	-351.13	40°11'42.306"N	104°56'40.967"W	1.14	
8425.00	89.720	267.910	7198.84	439.15	-137.99	-437.09	40°11'42.278"N	104°56'42.074"W	1.12	
8510.00	89.750	267.980	7199.23	524.13	-141.03	-522.03	40°11'42.248"N	104°56'43.169"W	0.09	
8595.00	89.470	267.960	7199.81	609.11	-144.04	-606.98	40°11'42.218"N	104°56'44.264"W	0.33	
8766.00	89.810	268.520	7200.89	780.08	-149.30	-777.89	40°11'42.167"N	104°56'46.466"W	0.38	
8851.00	90.400	269.080	7200.73	865.08	-151.08	-862.87	40°11'42.149"N	104°56'47.561"W	0.96	
8936.00	90.240	269.040	7200.26	950.08	-152.47	-947.86	40°11'42.135"N	104°56'48.656"W	0.19	
9021.00	90.300	269.170	7199.86	1035.08	-153.80	-1032.85	40°11'42.122"N	104°56'49.752"W	0.17	
9106.00	90.030	268.940	7199.61	1120.08	-155.20	-1117.83	40°11'42.108"N	104°56'50.847"W	0.42	
9191.00	90.330	269.810	7199.34	1205.08	-156.13	-1202.83	40°11'42.099"N	104°56'51.942"W	1.08	
9277.00	89.840	269.930	7199.22	1291.07	-156.32	-1288.83	40°11'42.097"N	104°56'53.050"W	0.59	
9362.00	89.230	269.520	7199.91	1376.06	-156.73	-1373.82	40°11'42.093"N	104°56'54.146"W	0.86	
9447.00	88.760	268.200	7201.40	1461.05	-158.42	-1458.79	40°11'42.076"N	104°56'55.241"W	1.65	
9532.00	88.420	268.270	7203.49	1546.01	-161.04	-1543.73	40°11'42.050"N	104°56'56.335"W	0.41	
9617.00	88.120	268.170	7206.05	1630.96	-163.68	-1628.65	40°11'42.024"N	104°56'57.429"W	0.37	
9703.00	88.670	268.170	7208.46	1716.91	-166.42	-1714.57	40°11'41.997"N	104°56'58.537"W	0.64	
9788.00	89.230	268.720	7210.02	1801.89	-168.73	-1799.52	40°11'41.974"N	104°56'59.631"W	0.92	
9873.00	90.430	268.750	7210.27	1886.89	-170.61	-1884.50	40°11'41.955"N	104°57'00.726"W	1.41	
9958.00	90.220	268.550	7209.79	1971.88	-172.61	-1969.47	40°11'41.936"N	104°57'01.821"W	0.34	
10043.00	90.090	268.240	7209.56	2056.88	-174.99	-2054.44	40°11'41.912"N	104°57'02.916"W	0.40	
10128.00	90.740	269.550	7208.95	2141.87	-176.63	-2139.42	40°11'41.896"N	104°57'04.011"W	1.72	
10214.00	90.370	268.920	7208.11	2227.87	-177.78	-2225.41	40°11'41.884"N	104°57'05.119"W	0.85	
10299.00	90.220	268.480	7207.67	2312.86	-179.70	-2310.38	40°11'41.865"N	104°57'06.214"W	0.55	
10384.00	90.700	269.760	7206.99	2397.86	-181.01	-2395.37	40°11'41.852"N	104°57'07.310"W	1.61	
10469.00	90.490	269.950	7206.11	2482.85	-181.22	-2480.36	40°11'41.850"N	104°57'08.405"W	0.33	
10554.00	90.800	270.010	7205.15	2567.83	-181.25	-2565.36	40°11'41.850"N	104°57'09.500"W	0.37	
10639.00	90.060	269.290	7204.51	2652.83	-181.77	-2650.35	40°11'41.844"N	104°57'10.595"W	1.21	
10725.00	90.810	269.580	7203.86	2738.82	-182.62	-2736.35	40°11'41.836"N	104°57'11.704"W	0.94	
10810.00	90.280	269.200	7203.05	2823.82	-183.53	-2821.34	40°11'41.827"N	104°57'12.799"W	0.77	
10895.00	89.660	268.500	7203.10	2908.81	-185.23	-2906.32	40°11'41.810"N	104°57'13.894"W	1.10	
10980.00	89.350	268.310	7203.83	2993.80	-187.60	-2991.28	40°11'41.786"N	104°57'14.989"W	0.43	
11066.00	89.820	269.050	7204.45	3079.80	-189.58	-3077.26	40°11'41.767"N	104°57'16.097"W	1.02	
11151.00	89.820	269.250	7204.72	3164.80	-190.84	-3162.25	40°11'41.754"N	104°57'17.192"W	0.24	
11236.00	88.400	269.210	7206.04	3249.79	-191.98	-3247.23	40°11'41.743"N	104°57'18.287"W	1.67	
11323.00	88.950	268.750	7208.05	3336.76	-193.53	-3334.19	40°11'41.727"N	104°57'19.408"W	0.82	
11408.00	89.630	269.140	7209.11	3421.75	-195.10	-3419.17	40°11'41.712"N	104°57'20.503"W	0.92	
11494.00	89.040	268.110	7210.11	3507.74	-197.16	-3505.14	40°11'41.691"N	104°57'21.610"W	1.38	
11579.00	88.330	267.470	7212.06	3592.70	-200.44	-3590.05	40°11'41.659"N	104°57'22.705"W	1.12	
11664.00	89.690	268.210	7213.52	3677.66	-203.64	-3674.97	40°11'41.627"N	104°57'23.799"W	1.82	

Actual Wellpath Report

BAREFOOT 33C-25HZ AWP

Page 5 of 7

REFERENCE WELLPATH IDENTIFICATION			
Operator	KERR-MCGEE OIL & GAS ONSHORE LP	Slot	SLOT#34 BAREFOOT 33C-25HZ (1989'FSL & 470'FEL, SEC.25)
Area	COLORADO	Well	BAREFOOT 33C-25HZ
Field	WELD COUNTY (KERR MCGEE)	Wellbore	BAREFOOT 33C-25HZ AWB
Facility	SEC.25-T3N-R68W		

WELLPATH DATA (146 stations)										
MD [ft]	Inclination [°]	Azimuth [°]	TVD [ft]	Vert Sect [ft]	North [ft]	East [ft]	Latitude	Longitude	DLS [°/100ft]	Comments
11751.00	89.040	266.840	7214.49	3764.62	-207.40	-3761.88	40°11'41.590"N	104°57'24.919"W	1.74	
11839.00	90.090	266.020	7215.16	3852.52	-212.87	-3849.71	40°11'41.535"N	104°57'26.051"W	1.51	
11924.00	91.900	267.360	7213.68	3937.42	-217.78	-3934.55	40°11'41.487"N	104°57'27.144"W	2.65	
12009.00	92.300	267.120	7210.57	4022.32	-221.87	-4019.39	40°11'41.446"N	104°57'28.237"W	0.55	
12094.00	91.470	267.460	7207.77	4107.23	-225.89	-4104.25	40°11'41.406"N	104°57'29.331"W	1.06	
12179.00	90.150	268.080	7206.57	4192.19	-229.20	-4189.18	40°11'41.374"N	104°57'30.425"W	1.72	
12265.00	90.240	268.260	7206.28	4278.18	-231.94	-4275.13	40°11'41.346"N	104°57'31.533"W	0.23	
12350.00	89.900	267.880	7206.17	4363.17	-234.80	-4360.08	40°11'41.318"N	104°57'32.627"W	0.60	
12435.00	89.350	268.350	7206.73	4448.15	-237.60	-4445.03	40°11'41.290"N	104°57'33.722"W	0.85	
12543.00	89.930	268.640	7207.41	4556.14	-240.44	-4552.99	40°11'41.262"N	104°57'35.113"W	0.60	Last BHI MWD+IFR Surveys
12612.00	89.930	268.640	7207.49	4625.14	-242.07	-4621.98	40°11'41.246"N	104°57'36.002"W	0.00	Projection to Bit

HOLE & CASING SECTIONS - Ref Wellbore: BAREFOOT 33C-25HZ AWB Ref Wellpath: BAREFOOT 33C-25HZ AWP									
String/Diameter	Start MD [ft]	End MD [ft]	Interval [ft]	Start TVD [ft]	End TVD [ft]	Start N/S [ft]	Start E/W [ft]	End N/S [ft]	End E/W [ft]
13.5in Open Hole	17.00	1765.00	1748.00	17.00	1764.94	0.00	0.00	-3.45	-10.32
9.625in Casing Intermediate	17.00	1754.00	1737.00	17.00	1753.94	0.00	0.00	-3.36	-10.22
8.75in Open Hole	1765.00	7582.00	5817.00	1764.94	7204.00	-3.45	-10.32	-98.73	404.72
7in Casing Intermediate	17.00	7572.00	7555.00	17.00	7203.20	0.00	0.00	-98.20	414.68
6.125in Open Hole	7582.00	12612.00	5030.00	7204.00	7207.49	-98.73	404.72	-242.07	-4621.98

Actual Wellpath Report

BAREFOOT 33C-25HZ AWP

Page 6 of 7

REFERENCE WELLPATH IDENTIFICATION			
Operator	KERR-MCGEE OIL & GAS ONSHORE LP	Slot	SLOT#34 BAREFOOT 33C-25HZ (1989'FSL & 470'FEL, SEC.25)
Area	COLORADO	Well	BAREFOOT 33C-25HZ
Field	WELD COUNTY (KERR MCGEE)	Wellbore	BAREFOOT 33C-25HZ AWB
Facility	SEC.25-T3N-R68W		

TARGETS									
Name	MD [ft]	TVD [ft]	North [ft]	East [ft]	Grid East [US ft]	Grid North [US ft]	Latitude	Longitude	Shape
SEC.25-T3N-R68W SECTION LINES		-16.00	1247.73	-193.29	3155268.77	1315781.51	40°11'55.972"N	104°56'38.933"W	polygon
BAREFOOT 33C-25HZ BHL (1845'FSL & 150'FWL, SEC.25) REV-2		7223.00	-217.07	-4647.79	3150823.75	1314288.86	40°11'41.493"N	104°57'36.335"W	point
BAREFOOT 33C-25HZ BHL ON PLAT (1845'FSL & 50'FWL, SEC.25) REV-1		7223.00	-217.07	-4747.79	3150723.76	1314288.23	40°11'41.492"N	104°57'37.624"W	point
BAREFOOT 33C-25HZ LAND BOX		7223.00	0.00	0.00	3155469.88	1314535.08	40°11'43.642"N	104°56'36.442"W	polygon

WELLPATH COMPOSITION - Ref Wellbore: BAREFOOT 33C-25HZ AWB					Ref Wellpath: BAREFOOT 33C-25HZ AWP	
Start MD [ft]	End MD [ft]	Positional Uncertainty Model	Log Name/Comment		Wellbore	
17.00	1686.00	Generic gyro - continuous (Standard)	MS ENERGY GYRO SURVEYS <117-1686>		BAREFOOT 33C-25HZ AWB	
1686.00	7526.00	NaviTrak (IFR)	BHI MWD+IFR SURVEYS 8 3/4" HOLE <1785-7526>		BAREFOOT 33C-25HZ AWB	
7526.00	12543.00	NaviTrak (IFR)	BHI MWD+IFR SURVEYS 6 1/8" HOLE <7610-12543>		BAREFOOT 33C-25HZ AWB	
12543.00	12612.00	Blind Drilling (std)	Projection to bit		BAREFOOT 33C-25HZ AWB	

Actual Wellpath Report

BAREFOOT 33C-25HZ AWP

Page 7 of 7

REFERENCE WELLPATH IDENTIFICATION			
Operator	KERR-MCGEE OIL & GAS ONSHORE LP	Slot	SLOT#34 BAREFOOT 33C-25HZ (1989'FSL & 470'FEL, SEC.25)
Area	COLORADO	Well	BAREFOOT 33C-25HZ
Field	WELD COUNTY (KERR MCGEE)	Wellbore	BAREFOOT 33C-25HZ AWB
Facility	SEC.25-T3N-R68W		

WELLPATH COMMENTS				
MD [ft]	Inclination [°]	Azimuth [°]	TVD [ft]	Comment
17.00	0.000	142.550	17.00	Tie-On
117.00	0.580	142.550	117.00	Begin GYRO Surveys
1686.00	0.600	251.380	1685.95	Tie-Into GYRO Surveys
1785.00	0.710	222.210	1784.94	Begin BHI MWD+IFR Surveys
7572.00	85.085	267.097	7203.20	7" Casing Point
12543.00	89.930	268.640	7207.41	Last BHI MWD+IFR Surveys
12612.00	89.930	268.640	7207.49	Projection to Bit