

Anadarko
Petroleum Corporation



**BAKER
HUGHES**

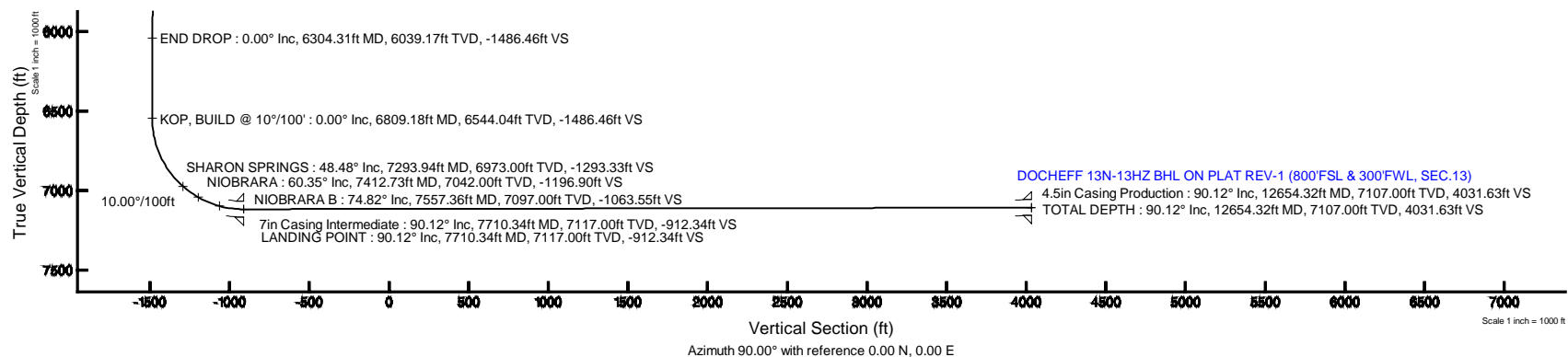
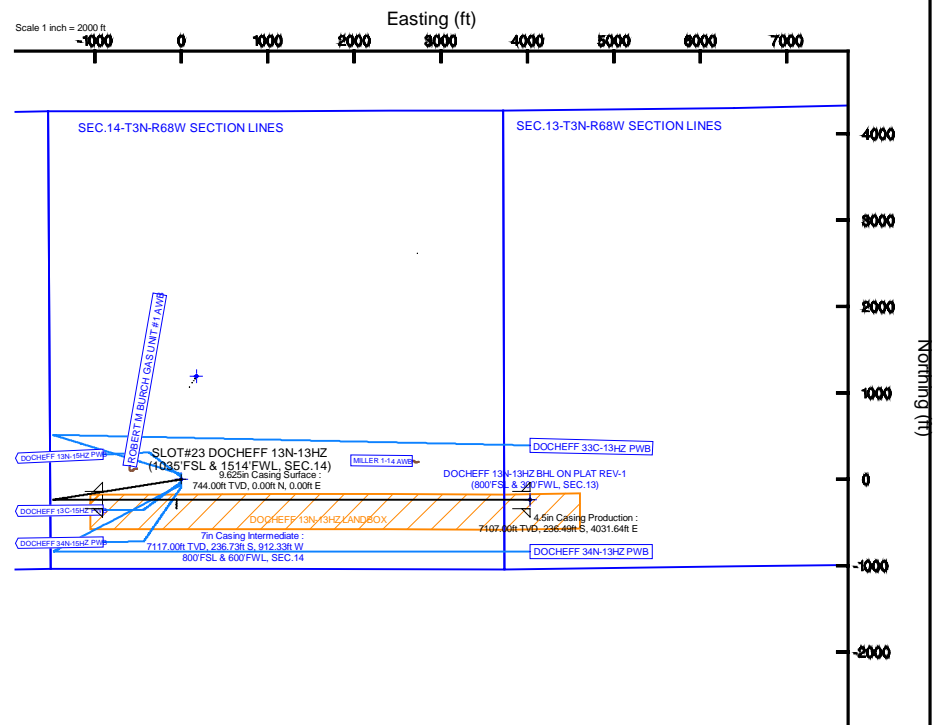
True vertical depths are referenced to PERMT (17Kb) (RKB)	Grid System: NAD83 / Lambert Colorado SP, Northern Zone (501), US feet
Measured depths are referenced to PERMT (17Kb) (RKB)	North Reference: True north
PERMT (17Kb) (RKB) to Mean Sea Level: 4952 feet	Scale: True distance
Mean Sea Level to Mud line (N Slot SLO7623 DOCHIEFF 13N-194Z (1035 FSL & 1514 FWL, SEC.14)) : feet	Depths are in feet
Coordinates are in feet referenced to Slot	Created by cretain on 11/5ec/2014

Facility Name				Grid East (US R)	Grid North (US R)	Latitude	Longitude
SEC. 14-TIN-R66W				Grid East (US R)	Grid North (US R)	Latitude	Longitude
Slot	Local N (R)	Local E (R)	Grid East (US R)	Grid North (US R)	Latitude	Longitude	
SLOT#23 DOCHIEFF 13N-13#2 (1035FSL & 151+PFWL, SEC. 14)	339.41	56.32	3146620.69	1324609.308	40°13'15.029"N	104°58'27.900"W	
PERMIT (179K) (R6K) to Mud line (Aa Slot: SLOT#23 DOCHIEFF 13N-13#2 (1035FSL & 151+PFWL, SEC. 14))							4652R
[Mean Sea Level to Mud line (Aa Slot: SLOT#23 DOCHIEFF 13N-13#2 (1035FSL & 151+PFWL, SEC. 14))							0R
PERMIT (179K) (R6K) to Mean Sea Level							4652R

Start MD (ft)	End MD (ft)	Tool	Model	Log Name/Comment	Wellbore
17.00	12654.32	NaviTrak	NaviTrak (IFR) 1		DOCHEFF 13N-13HZ PWB

Design Comment	MD (ft)	Inc (")	Az (")	TVD (ft)	Local N (ft)	Local E (ft)	DLS (°/100ft)	VS (ft)
TIE ON	17.00	0.000	260.950	17.00	0.00	0.00	0.00	0.00
BEGIN NUDGE	1200.00	0.000	260.950	1200.00	0.00	0.00	0.00	0.00
END NUDGE	2300.00	22.000	260.950	2273.17	-32.81	-206.01	2.00	-206.01
BEGIN DROP	5204.31	22.000	260.950	4966.00	-203.95	-1280.44	0.00	-1280.45
END DROP	6304.31	0.000	89.997	6039.17	-236.76	-1486.44	2.00	-1486.46
KOP, BUILD @ 10°/100'	6809.18	0.000	89.997	6544.04	-236.76	-1486.44	0.00	-1486.46
LANDING POINT	7710.34	90.116	89.997	7117.00	-236.73	-912.33	10.00	-912.34
TOTAL DEPTH	12654.32	90.116	89.997	7107.00	-236.49	4031.64	0.00	4031.63

Name	MD (ft)	TVD (ft)	Local N (ft)	Local E (ft)	Grid East (US ft)	Grid North (US ft)	Latitude	Longitude
SEC 13-13N 86W SECTION LINES		0.00	1193.79	174.22	3146987.81	325364.06	40°13'30.1807N	104°58'24.928W
SEC 13-13N 86W SECTION LINES		4652.00	3428.00	8445.99	3155245.81	327547.17	40°13'52.244N	104°58'38.278W
SEC 14-13N 86W SECTION LINES		4952.00	3428.00	8445.99	3155245.81	327547.17	40°13'52.244N	104°58'38.278W
DOOHEFF 13N 1342 B/E ON PLAT REV-1 (800PLT & 300FWL - SEC 13)	12654.32	7107.00	-236.49	4031.64	3150653.47	323566.74	40°13'56.043N	104°57'35.201W
DOOHEFF 13N 1342 / ANDROB		7107.00	0.00	0.00	3146939.68	334069.31	40°13'18.3835N	104°57'07.174W



REFERENCE WELLPATH IDENTIFICATION			
Operator	KERR-MCGEE OIL & GAS ONSHORE LP	Slot	SLOT#23 DOCHEFF 13N-13HZ (1035'FSL & 1514'FWL, SEC.14)
Area	COLORADO	Well	DOCHEFF 13N-13HZ
Field	WELD COUNTY (KERR MCGEE)	Wellbore	DOCHEFF 13N-13HZ PWB
Facility	SEC.14-T3N-R68W		

REPORT SETUP INFORMATION			
Projection System	NAD83 / Lambert Colorado SP, Northern Zone (501), US feet	Software System	WellArchitect® 4.0.0
North Reference	True	User	Precain
Scale	0.999957	Report Generated	11/Sep/2014 at 10:58
Convergence at slot	n/a	Database/Source file	WellArchitectDB/DOCHEFF_13N-13HZ_PWB.xml

WELLPATH LOCATION						
	Local coordinates		Grid coordinates		Geographic coordinates	
	North[ft]	East[ft]	Easting[US ft]	Northing[US ft]	Latitude	Longitude
Slot Location	339.41	56.32	3146820.68	1324069.31	40°13'18.383"N	104°58'27.174"W
Facility Reference Pt			3146766.38	1323729.59	40°13'15.029"N	104°58'27.900"W
Field Reference Pt			3197771.84	1268891.29	40°04'09.600"N	104°47'36.000"W

WELLPATH DATUM			
Calculation method	Minimum curvature	PERMIT (17'KB) (RKB) to Facility Vertical Datum	4952.00ft
Horizontal Reference Pt	Slot	PERMIT (17'KB) (RKB) to Mean Sea Level	4952.00ft
Vertical Reference Pt	PERMIT (17'KB) (RKB)	PERMIT (17'KB) (RKB) to Mud Line at Slot (SLOT#23 DOCHEFF 13N-13HZ (1035'FSL & 1514'FWL, SEC.14))	4952.00ft
MD Reference Pt	PERMIT (17'KB) (RKB)	Section Origin	N 0.00, E 0.00 ft
Field Vertical Reference	Mean Sea Level	Section Azimuth	90.00°

REFERENCE WELLPATH IDENTIFICATION			
Operator	KERR-MCGEE OIL & GAS ONSHORE LP	Slot	SLOT#23 DOCHEFF 13N-13HZ (1035'FSL & 1514'FWL, SEC.14)
Area	COLORADO	Well	DOCHEFF 13N-13HZ
Field	WELD COUNTY (KERR MCGEE)	Wellbore	DOCHEFF 13N-13HZ PWB
Facility	SEC.14-T3N-R68W		

WELLPATH DATA (135 stations) † = interpolated/extrapolated station										
MD [ft]	Inclination [°]	Azimuth [°]	TVD [ft]	Vert Sect [ft]	North [ft]	East [ft]	Latitude	Longitude	DLS [°/100ft]	Comments
0.00†	0.000	260.950	0.00	0.00	0.00	0.00	40°13'18.383"N	104°58'27.174"W	0.00	
17.00	0.000	260.950	17.00	0.00	0.00	0.00	40°13'18.383"N	104°58'27.174"W	0.00	TIE ON
117.00†	0.000	260.950	117.00	0.00	0.00	0.00	40°13'18.383"N	104°58'27.174"W	0.00	
217.00†	0.000	260.950	217.00	0.00	0.00	0.00	40°13'18.383"N	104°58'27.174"W	0.00	
317.00†	0.000	260.950	317.00	0.00	0.00	0.00	40°13'18.383"N	104°58'27.174"W	0.00	
417.00†	0.000	260.950	417.00	0.00	0.00	0.00	40°13'18.383"N	104°58'27.174"W	0.00	
517.00†	0.000	260.950	517.00	0.00	0.00	0.00	40°13'18.383"N	104°58'27.174"W	0.00	
617.00†	0.000	260.950	617.00	0.00	0.00	0.00	40°13'18.383"N	104°58'27.174"W	0.00	
717.00†	0.000	260.950	717.00	0.00	0.00	0.00	40°13'18.383"N	104°58'27.174"W	0.00	
817.00†	0.000	260.950	817.00	0.00	0.00	0.00	40°13'18.383"N	104°58'27.174"W	0.00	
917.00†	0.000	260.950	917.00	0.00	0.00	0.00	40°13'18.383"N	104°58'27.174"W	0.00	
1017.00†	0.000	260.950	1017.00	0.00	0.00	0.00	40°13'18.383"N	104°58'27.174"W	0.00	
1117.00†	0.000	260.950	1117.00	0.00	0.00	0.00	40°13'18.383"N	104°58'27.174"W	0.00	
1200.00	0.000	260.950	1200.00	0.00	0.00	0.00	40°13'18.383"N	104°58'27.174"W	0.00	BEGIN NUDGE
1217.00†	0.340	260.950	1217.00	-0.05	-0.01	-0.05	40°13'18.383"N	104°58'27.175"W	2.00	
1317.00†	2.340	260.950	1316.97	-2.36	-0.38	-2.36	40°13'18.379"N	104°58'27.204"W	2.00	
1417.00†	4.340	260.950	1416.79	-8.11	-1.29	-8.11	40°13'18.370"N	104°58'27.279"W	2.00	
1517.00†	6.340	260.950	1516.35	-17.30	-2.76	-17.30	40°13'18.356"N	104°58'27.397"W	2.00	
1617.00†	8.340	260.950	1615.53	-29.92	-4.77	-29.92	40°13'18.336"N	104°58'27.560"W	2.00	
1717.00†	10.340	260.950	1714.20	-45.95	-7.32	-45.95	40°13'18.311"N	104°58'27.766"W	2.00	
1817.00†	12.340	260.950	1812.24	-65.36	-10.41	-65.36	40°13'18.280"N	104°58'28.017"W	2.00	
1917.00†	14.340	260.950	1909.54	-88.15	-14.04	-88.15	40°13'18.244"N	104°58'28.310"W	2.00	
2017.00†	16.340	260.950	2005.97	-114.27	-18.20	-114.27	40°13'18.203"N	104°58'28.647"W	2.00	
2117.00†	18.340	260.950	2101.42	-143.70	-22.89	-143.70	40°13'18.157"N	104°58'29.027"W	2.00	
2217.00†	20.340	260.950	2195.77	-176.41	-28.10	-176.41	40°13'18.105"N	104°58'29.448"W	2.00	
2300.00	22.000	260.950	2273.17	-206.01	-32.81	-206.01	40°13'18.059"N	104°58'29.830"W	2.00	END NUDGE
2317.00†	22.000	260.950	2288.93	-212.30	-33.81	-212.30	40°13'18.049"N	104°58'29.911"W	0.00	
2417.00†	22.000	260.950	2381.65	-249.29	-39.71	-249.29	40°13'17.991"N	104°58'30.388"W	0.00	
2517.00†	22.000	260.950	2474.37	-286.29	-45.60	-286.28	40°13'17.932"N	104°58'30.865"W	0.00	
2617.00†	22.000	260.950	2567.09	-323.28	-51.49	-323.28	40°13'17.874"N	104°58'31.342"W	0.00	
2717.00†	22.000	260.950	2659.80	-360.28	-57.38	-360.27	40°13'17.816"N	104°58'31.818"W	0.00	
2817.00†	22.000	260.950	2752.52	-397.27	-63.28	-397.27	40°13'17.758"N	104°58'32.295"W	0.00	
2917.00†	22.000	260.950	2845.24	-434.26	-69.17	-434.26	40°13'17.699"N	104°58'32.772"W	0.00	
3017.00†	22.000	260.950	2937.96	-471.26	-75.06	-471.26	40°13'17.641"N	104°58'33.249"W	0.00	
3117.00†	22.000	260.950	3030.68	-508.25	-80.95	-508.25	40°13'17.583"N	104°58'33.726"W	0.00	
3217.00†	22.000	260.950	3123.40	-545.25	-86.85	-545.24	40°13'17.525"N	104°58'34.203"W	0.00	
3317.00†	22.000	260.950	3216.11	-582.24	-92.74	-582.24	40°13'17.466"N	104°58'34.680"W	0.00	
3417.00†	22.000	260.950	3308.83	-619.24	-98.63	-619.23	40°13'17.408"N	104°58'35.157"W	0.00	
3517.00†	22.000	260.950	3401.55	-656.23	-104.52	-656.23	40°13'17.350"N	104°58'35.634"W	0.00	
3617.00†	22.000	260.950	3494.27	-693.23	-110.42	-693.22	40°13'17.292"N	104°58'36.111"W	0.00	
3717.00†	22.000	260.950	3586.99	-730.22	-116.31	-730.22	40°13'17.234"N	104°58'36.587"W	0.00	
3817.00†	22.000	260.950	3679.71	-767.22	-122.20	-767.21	40°13'17.175"N	104°58'37.064"W	0.00	
3917.00†	22.000	260.950	3772.43	-804.21	-128.09	-804.20	40°13'17.117"N	104°58'37.541"W	0.00	
4017.00†	22.000	260.950	3865.14	-841.21	-133.99	-841.20	40°13'17.059"N	104°58'38.018"W	0.00	
4117.00†	22.000	260.950	3957.86	-878.20	-139.88	-878.19	40°13'17.001"N	104°58'38.495"W	0.00	

REFERENCE WELLPATH IDENTIFICATION			
Operator	KERR-MCGEE OIL & GAS ONSHORE LP	Slot	SLOT#23 DOCHEFF 13N-13HZ (1035'FSL & 1514'FWL, SEC.14)
Area	COLORADO	Well	DOCHEFF 13N-13HZ
Field	WELD COUNTY (KERR MCGEE)	Wellbore	DOCHEFF 13N-13HZ PWB
Facility	SEC.14-T3N-R68W		

WELLPATH DATA (135 stations) † = interpolated/extrapolated station										
MD [ft]	Inclination [°]	Azimuth [°]	TVD [ft]	Vert Sect [ft]	North [ft]	East [ft]	Latitude	Longitude	DLS [°/100ft]	Comments
4217.00†	22.000	260.950	4050.58	-915.19	-145.77	-915.19	40°13'16.942"N	104°58'38.972"W	0.00	
4317.00†	22.000	260.950	4143.30	-952.19	-151.66	-952.18	40°13'16.884"N	104°58'39.449"W	0.00	
4417.00†	22.000	260.950	4236.02	-989.18	-157.56	-989.18	40°13'16.826"N	104°58'39.926"W	0.00	
4517.00†	22.000	260.950	4328.74	-1026.18	-163.45	-1026.17	40°13'16.768"N	104°58'40.403"W	0.00	
4617.00†	22.000	260.950	4421.45	-1063.17	-169.34	-1063.16	40°13'16.709"N	104°58'40.880"W	0.00	
4717.00†	22.000	260.950	4514.17	-1100.17	-175.23	-1100.16	40°13'16.651"N	104°58'41.357"W	0.00	
4817.00†	22.000	260.950	4606.89	-1137.16	-181.12	-1137.15	40°13'16.593"N	104°58'41.833"W	0.00	
4917.00†	22.000	260.950	4699.61	-1174.16	-187.02	-1174.15	40°13'16.535"N	104°58'42.310"W	0.00	
5017.00†	22.000	260.950	4792.33	-1211.15	-192.91	-1211.14	40°13'16.476"N	104°58'42.787"W	0.00	
5117.00†	22.000	260.950	4885.05	-1248.15	-198.80	-1248.14	40°13'16.418"N	104°58'43.264"W	0.00	
5204.31	22.000	260.950	4966.00	-1280.45	-203.95	-1280.44	40°13'16.367"N	104°58'43.681"W	0.00	BEGIN DROP
5217.00†	21.746	260.950	4977.77	-1285.12	-204.69	-1285.10	40°13'16.360"N	104°58'43.741"W	2.00	
5317.00†	19.746	260.950	5071.29	-1320.10	-210.26	-1320.09	40°13'16.305"N	104°58'44.192"W	2.00	
5417.00†	17.746	260.950	5165.98	-1351.83	-215.32	-1351.82	40°13'16.255"N	104°58'44.601"W	2.00	
5517.00†	15.746	260.950	5261.73	-1380.29	-219.85	-1380.27	40°13'16.210"N	104°58'44.968"W	2.00	
5617.00†	13.746	260.950	5358.43	-1405.42	-223.85	-1405.41	40°13'16.171"N	104°58'45.292"W	2.00	
5717.00†	11.746	260.950	5455.96	-1427.21	-227.32	-1427.20	40°13'16.136"N	104°58'45.572"W	2.00	
5817.00†	9.746	260.950	5554.20	-1445.62	-230.26	-1445.61	40°13'16.107"N	104°58'45.810"W	2.00	
5917.00†	7.746	260.950	5653.04	-1460.64	-232.65	-1460.63	40°13'16.084"N	104°58'46.003"W	2.00	
6017.00†	5.746	260.950	5752.34	-1472.24	-234.49	-1472.23	40°13'16.065"N	104°58'46.153"W	2.00	
6117.00†	3.746	260.950	5851.99	-1480.41	-235.80	-1480.40	40°13'16.052"N	104°58'46.258"W	2.00	
6217.00†	1.746	260.950	5951.87	-1485.14	-236.55	-1485.13	40°13'16.045"N	104°58'46.319"W	2.00	
6304.31	0.000	89.997	6039.17	-1486.46	-236.76	-1486.44	40°13'16.043"N	104°58'46.336"W	2.00	END DROP
6317.00†	0.000	89.997	6051.86	-1486.46	-236.76	-1486.44	40°13'16.043"N	104°58'46.336"W	0.00	
6417.00†	0.000	89.997	6151.86	-1486.46	-236.76	-1486.44	40°13'16.043"N	104°58'46.336"W	0.00	
6517.00†	0.000	89.997	6251.86	-1486.46	-236.76	-1486.44	40°13'16.043"N	104°58'46.336"W	0.00	
6617.00†	0.000	89.997	6351.86	-1486.46	-236.76	-1486.44	40°13'16.043"N	104°58'46.336"W	0.00	
6717.00†	0.000	89.997	6451.86	-1486.46	-236.76	-1486.44	40°13'16.043"N	104°58'46.336"W	0.00	
6809.18	0.000	89.997	6544.04	-1486.46	-236.76	-1486.44	40°13'16.043"N	104°58'46.336"W	0.00	KOP, BUILD @ 10°/100'
6817.00†	0.782	89.997	6551.86	-1486.40	-236.76	-1486.39	40°13'16.043"N	104°58'46.336"W	10.00	
6917.00†	10.782	89.997	6651.22	-1476.34	-236.76	-1476.33	40°13'16.043"N	104°58'46.206"W	10.00	
7017.00†	20.782	89.997	6747.33	-1449.18	-236.76	-1449.17	40°13'16.043"N	104°58'45.856"W	10.00	
7117.00†	30.782	89.997	6837.26	-1405.74	-236.76	-1405.73	40°13'16.043"N	104°58'45.296"W	10.00	
7217.00†	40.782	89.997	6918.28	-1347.34	-236.75	-1347.33	40°13'16.043"N	104°58'44.543"W	10.00	
7317.00†	50.782	89.997	6987.93	-1275.76	-236.75	-1275.75	40°13'16.043"N	104°58'43.620"W	10.00	
7417.00†	60.782	89.997	7044.10	-1193.18	-236.74	-1193.17	40°13'16.043"N	104°58'42.555"W	10.00	
7517.00†	70.782	89.997	7085.07	-1102.10	-236.74	-1102.08	40°13'16.043"N	104°58'41.381"W	10.00	
7617.00†	80.782	89.997	7109.60	-1005.28	-236.74	-1005.27	40°13'16.043"N	104°58'40.133"W	10.00	
7710.34	90.116	89.997	7117.00	-912.34	-236.73	-912.33	40°13'16.043"N	104°58'38.935"W	10.00	LANDING POINT
7717.00†	90.116	89.997	7116.98	-905.68	-236.73	-905.67	40°13'16.043"N	104°58'38.849"W	0.00	
7817.00†	90.116	89.997	7116.78	-805.68	-236.73	-805.67	40°13'16.044"N	104°58'37.560"W	0.00	
7917.00†	90.116	89.997	7116.58	-705.68	-236.72	-705.67	40°13'16.044"N	104°58'36.271"W	0.00	
8017.00†	90.116	89.997	7116.38	-605.68	-236.72	-605.67	40°13'16.044"N	104°58'34.982"W	0.00	
8117.00†	90.116	89.997	7116.17	-505.68	-236.71	-505.67	40°13'16.044"N	104°58'33.693"W	0.00	
8217.00†	90.116	89.997	7115.97	-405.68	-236.71	-405.67	40°13'16.044"N	104°58'32.404"W	0.00	

REFERENCE WELLPATH IDENTIFICATION			
Operator	KERR-MCGEE OIL & GAS ONSHORE LP	Slot	SLOT#23 DOCHEFF 13N-13HZ (1035'FSL & 1514'FWL, SEC.14)
Area	COLORADO	Well	DOCHEFF 13N-13HZ
Field	WELD COUNTY (KERR MCGEE)	Wellbore	DOCHEFF 13N-13HZ PWB
Facility	SEC.14-T3N-R68W		

WELLPATH DATA (135 stations) † = interpolated/extrapolated station										
MD [ft]	Inclination [°]	Azimuth [°]	TVD [ft]	Vert Sect [ft]	North [ft]	East [ft]	Latitude	Longitude	DLS [°/100ft]	Comments
8317.00†	90.116	89.997	7115.77	-305.68	-236.70	-305.67	40°13'16.044"N	104°58'31.114"W	0.00	
8417.00†	90.116	89.997	7115.57	-205.68	-236.70	-205.67	40°13'16.044"N	104°58'29.825"W	0.00	
8517.00†	90.116	89.997	7115.36	-105.68	-236.69	-105.67	40°13'16.044"N	104°58'28.536"W	0.00	
8617.00†	90.116	89.997	7115.16	-5.68	-236.69	-5.67	40°13'16.044"N	104°58'27.247"W	0.00	
8717.00†	90.116	89.997	7114.96	94.32	-236.68	94.33	40°13'16.044"N	104°58'25.958"W	0.00	
8817.00†	90.116	89.997	7114.76	194.32	-236.68	194.33	40°13'16.044"N	104°58'24.669"W	0.00	
8917.00†	90.116	89.997	7114.56	294.32	-236.67	294.33	40°13'16.044"N	104°58'23.380"W	0.00	
9017.00†	90.116	89.997	7114.35	394.32	-236.67	394.33	40°13'16.044"N	104°58'22.091"W	0.00	
9117.00†	90.116	89.997	7114.15	494.32	-236.66	494.33	40°13'16.044"N	104°58'20.801"W	0.00	
9217.00†	90.116	89.997	7113.95	594.32	-236.66	594.33	40°13'16.044"N	104°58'19.512"W	0.00	
9317.00†	90.116	89.997	7113.75	694.32	-236.65	694.33	40°13'16.044"N	104°58'18.223"W	0.00	
9417.00†	90.116	89.997	7113.55	794.32	-236.65	794.33	40°13'16.044"N	104°58'16.934"W	0.00	
9517.00†	90.116	89.997	7113.34	894.32	-236.64	894.33	40°13'16.044"N	104°58'15.645"W	0.00	
9617.00†	90.116	89.997	7113.14	994.32	-236.64	994.33	40°13'16.044"N	104°58'14.356"W	0.00	
9717.00†	90.116	89.997	7112.94	1094.32	-236.63	1094.33	40°13'16.044"N	104°58'13.067"W	0.00	
9817.00†	90.116	89.997	7112.74	1194.32	-236.63	1194.33	40°13'16.044"N	104°58'11.778"W	0.00	
9917.00†	90.116	89.997	7112.53	1294.32	-236.62	1294.33	40°13'16.044"N	104°58'10.488"W	0.00	
10017.00†	90.116	89.997	7112.33	1394.32	-236.62	1394.33	40°13'16.044"N	104°58'09.199"W	0.00	
10117.00†	90.116	89.997	7112.13	1494.32	-236.61	1494.33	40°13'16.044"N	104°58'07.910"W	0.00	
10217.00†	90.116	89.997	7111.93	1594.32	-236.61	1594.33	40°13'16.044"N	104°58'06.621"W	0.00	
10317.00†	90.116	89.997	7111.73	1694.32	-236.60	1694.33	40°13'16.044"N	104°58'05.332"W	0.00	
10417.00†	90.116	89.997	7111.52	1794.32	-236.60	1794.33	40°13'16.044"N	104°58'04.043"W	0.00	
10517.00†	90.116	89.997	7111.32	1894.31	-236.59	1894.33	40°13'16.044"N	104°58'02.754"W	0.00	
10617.00†	90.116	89.997	7111.12	1994.31	-236.59	1994.33	40°13'16.044"N	104°58'01.465"W	0.00	
10717.00†	90.116	89.997	7110.92	2094.31	-236.58	2094.33	40°13'16.044"N	104°58'00.175"W	0.00	
10817.00†	90.116	89.997	7110.71	2194.31	-236.58	2194.33	40°13'16.044"N	104°57'58.886"W	0.00	
10917.00†	90.116	89.997	7110.51	2294.31	-236.57	2294.33	40°13'16.044"N	104°57'57.597"W	0.00	
11017.00†	90.116	89.997	7110.31	2394.31	-236.57	2394.33	40°13'16.044"N	104°57'56.308"W	0.00	
11117.00†	90.116	89.997	7110.11	2494.31	-236.56	2494.33	40°13'16.044"N	104°57'55.019"W	0.00	
11217.00†	90.116	89.997	7109.91	2594.31	-236.56	2594.33	40°13'16.044"N	104°57'53.730"W	0.00	
11317.00†	90.116	89.997	7109.70	2694.31	-236.55	2694.33	40°13'16.044"N	104°57'52.441"W	0.00	
11417.00†	90.116	89.997	7109.50	2794.31	-236.55	2794.33	40°13'16.044"N	104°57'51.151"W	0.00	
11517.00†	90.116	89.997	7109.30	2894.31	-236.54	2894.33	40°13'16.044"N	104°57'49.862"W	0.00	
11617.00†	90.116	89.997	7109.10	2994.31	-236.54	2994.32	40°13'16.044"N	104°57'48.573"W	0.00	
11717.00†	90.116	89.997	7108.90	3094.31	-236.53	3094.32	40°13'16.044"N	104°57'47.284"W	0.00	
11817.00†	90.116	89.997	7108.69	3194.31	-236.53	3194.32	40°13'16.044"N	104°57'45.995"W	0.00	
11917.00†	90.116	89.997	7108.49	3294.31	-236.52	3294.32	40°13'16.044"N	104°57'44.706"W	0.00	
12017.00†	90.116	89.997	7108.29	3394.31	-236.52	3394.32	40°13'16.043"N	104°57'43.417"W	0.00	
12117.00†	90.116	89.997	7108.09	3494.31	-236.51	3494.32	40°13'16.043"N	104°57'42.128"W	0.00	
12217.00†	90.116	89.997	7107.88	3594.31	-236.51	3594.32	40°13'16.043"N	104°57'40.838"W	0.00	
12317.00†	90.116	89.997	7107.68	3694.31	-236.50	3694.32	40°13'16.043"N	104°57'39.549"W	0.00	
12417.00†	90.116	89.997	7107.48	3794.31	-236.50	3794.32	40°13'16.043"N	104°57'38.260"W	0.00	
12517.00†	90.116	89.997	7107.28	3894.31	-236.49	3894.32	40°13'16.043"N	104°57'36.971"W	0.00	
12617.00†	90.116	89.997	7107.08	3994.31	-236.49	3994.32	40°13'16.043"N	104°57'35.682"W	0.00	
12654.32	90.116	89.997	7107.00 [†]	4031.63	-236.49	4031.64	40°13'16.043"N	104°57'35.201"W	0.00	TOTAL DEPTH

REFERENCE WELLPATH IDENTIFICATION			
Operator	KERR-MCGEE OIL & GAS ONSHORE LP	Slot	SLOT#23 DOCHEFF 13N-13HZ (1035'FSL & 1514'FWL, SEC.14)
Area	COLORADO	Well	DOCHEFF 13N-13HZ
Field	WELD COUNTY (KERR MCGEE)	Wellbore	DOCHEFF 13N-13HZ PWB
Facility	SEC.14-T3N-R68W		

HOLE & CASING SECTIONS - Ref Wellbore: DOCHEFF 13N-13HZ PWB Ref Wellpath: DOCHEFF 13N-13HZ (PERMIT REV-1) PWP									
String/Diameter	Start MD [ft]	End MD [ft]	Interval [ft]	Start TVD [ft]	End TVD [ft]	Start N/S [ft]	Start E/W [ft]	End N/S [ft]	End E/W [ft]
13.5in Open Hole	17.00	744.00	727.00	17.00	744.00	0.00	0.00	0.00	0.00
9.625in Casing Surface	17.00	744.00	727.00	17.00	744.00	0.00	0.00	0.00	0.00
8.75in Open Hole	744.00	7710.34	6966.34	744.00	7117.00	0.00	0.00	-236.73	-912.33
7in Casing Intermediate	17.00	7710.34	7693.34	17.00	7117.00	0.00	0.00	-236.73	-912.33
6.125in Open Hole	7710.34	12654.32	4943.98	7117.00	7107.00	-236.73	-912.33	-236.49	4031.64
4.5in Casing Production	17.00	12654.32	12637.32	17.00	7107.00	0.00	0.00	-236.49	4031.64

TARGETS									
Name	MD [ft]	TVD [ft]	North [ft]	East [ft]	Grid East [US ft]	Grid North [US ft]	Latitude	Longitude	Shape
SEC.15-T3N-R68W SECTION LINES		1.00	1193.79	174.22	3146987.81	1325264.06	40°13'30.180"N	104°58'24.928"W	polygon
SEC.13-T3N-R68W SECTION LINES		4952.00	3428.00	8445.99	3155245.81	1327547.17	40°13'52.244"N	104°56'38.278"W	polygon
SEC.14-T3N-R68W SECTION LINES		4952.00	3428.00	8445.99	3155245.81	1327547.17	40°13'52.244"N	104°56'38.278"W	polygon
1) DOCHEFF 13N-13HZ BHL ON PLAT REV-1 (800'FSL & 300'FWL, SEC.13)	12654.32	7107.00	-236.49	4031.64	3150853.47	1323856.74	40°13'16.043"N	104°57'35.201"W	point
DOCHEFF 13N-13HZ LANDBOX		7107.00	0.00	0.00	3146820.68	1324069.31	40°13'18.383"N	104°58'27.174"W	polygon

SURVEY PROGRAM - Ref Wellbore: DOCHEFF 13N-13HZ PWB Ref Wellpath: DOCHEFF 13N-13HZ (PERMIT REV-1) PWP				
Start MD [ft]	End MD [ft]	Positional Uncertainty Model	Log Name/Comment	Wellbore
17.00	12654.32	NaviTrak (IFR)_1		DOCHEFF 13N-13HZ PWB

REFERENCE WELLPATH IDENTIFICATION			
Operator	KERR-MCGEE OIL & GAS ONSHORE LP	Slot	SLOT#23 DOCHEFF 13N-13HZ (1035'FSL & 1514'FWL, SEC.14)
Area	COLORADO	Well	DOCHEFF 13N-13HZ
Field	WELD COUNTY (KERR MCGEE)	Wellbore	DOCHEFF 13N-13HZ PWB
Facility	SEC.14-T3N-R68W		

WELLPATH COMMENTS				
MD [ft]	Inclination [°]	Azimuth [°]	TVD [ft]	Comment
552.00	0.000	260.950	552.00	BASE FOX HILLS
744.00	0.000	260.950	744.00	SURFACE CSG SETTING DEPTH
3782.80	22.000	260.950	3648.00	PARKMAN
4282.16	22.000	260.950	4111.00	SUSSEX
7293.94	48.476	89.997	6973.00	SHARON SPRINGS
7412.73	60.355	89.997	7042.00	NIOBRARA
7557.36	74.818	89.997	7097.00	NIOBRARA B

DESIGN COMMENTS				
MD [ft]	Inclination [°]	Azimuth [°]	TVD [ft]	Comment
17.00	0.000	260.950	17.00	TIE ON
1200.00	0.000	260.950	1200.00	BEGIN NUDGE
2300.00	22.000	260.950	2273.17	END NUDGE
5204.31	22.000	260.950	4966.00	BEGIN DROP
6304.31	0.000	89.997	6039.17	END DROP
6809.18	0.000	89.997	6544.04	KOP, BUILD @ 10°/100'
7710.34	90.116	89.997	7117.00	LANDING POINT
12654.32	90.116	89.997	7107.00	TOTAL DEPTH