

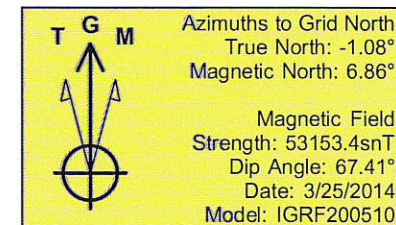
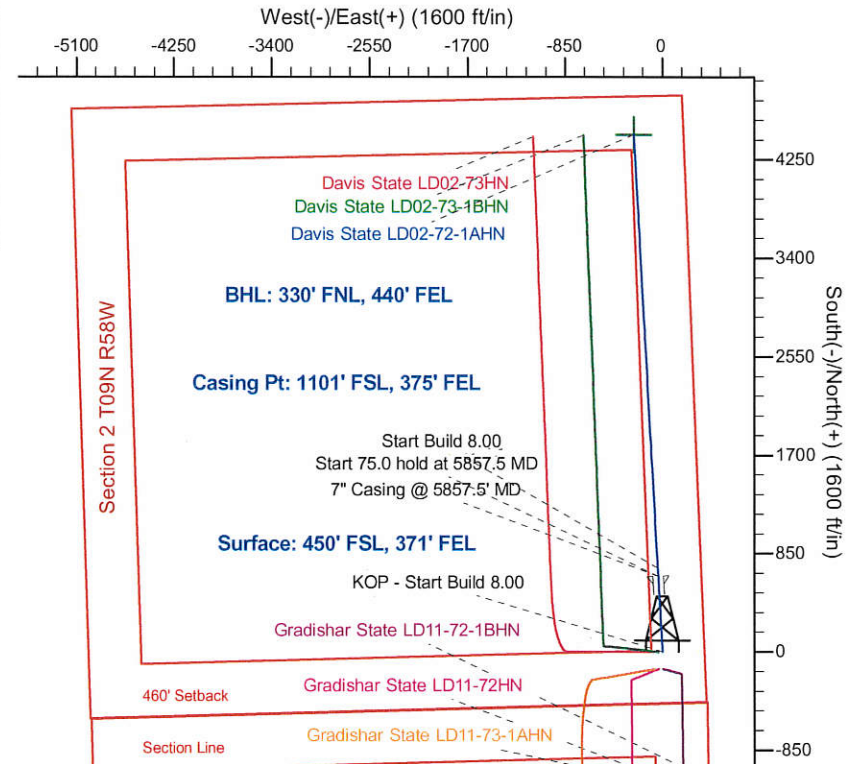
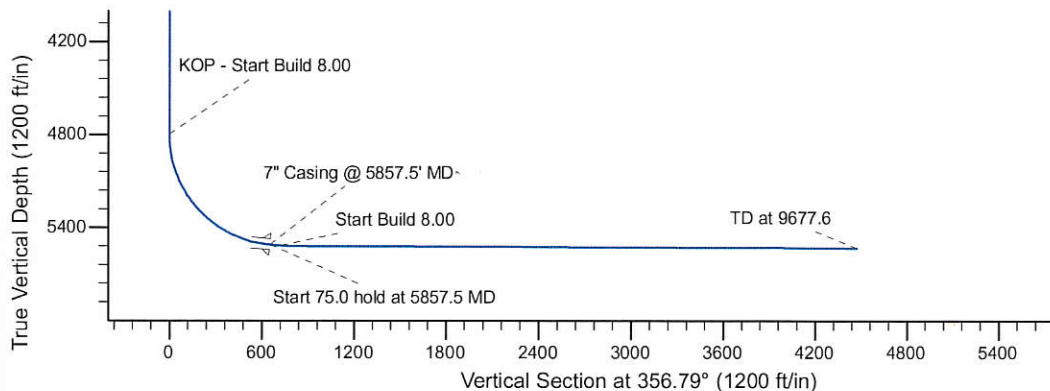
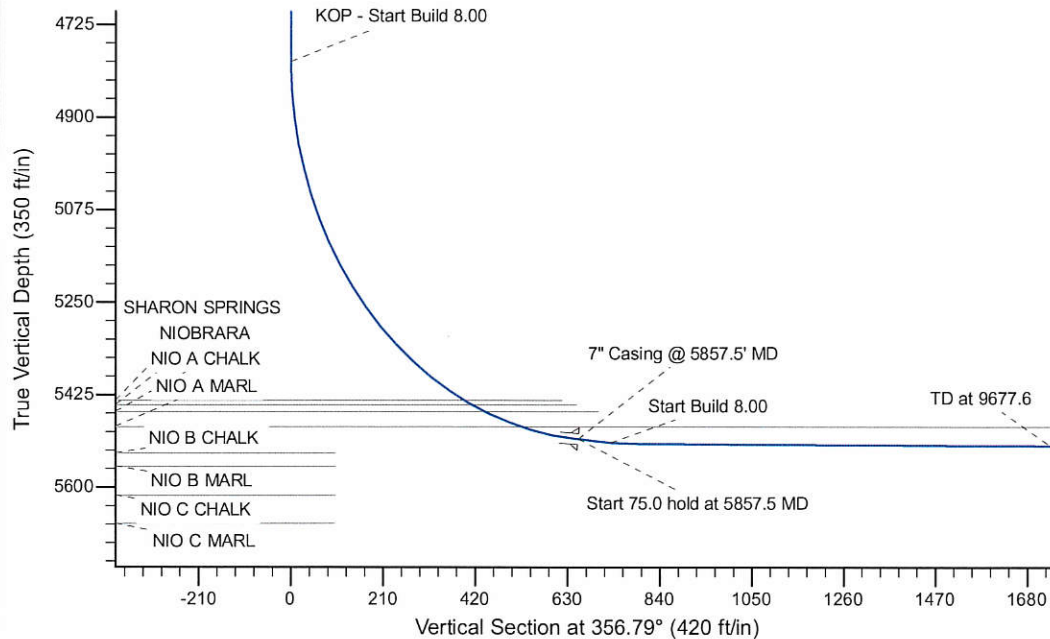
Project: Wattenberg Field  
 Site: LD (Sec.2-T09N-R58W) Weld County, CO  
 Well: Davis State LD02-72-1AHN  
 Wellbore: Original Drilling  
 Design: APD - Rev 1

# Northern Region Drilling - Working

Geodetic System: US State Plane 1983  
 Datum: North American Datum 1983  
 Ellipsoid: GRS 1980  
 Zone: Colorado Northern Zone  
 System Datum: Mean Sea Level

## SECTION DETAILS

Sec	MD	Inc	Azi	TVD	+N/-S	+E/-W	Dleg	TFace	VSec	Target
1	0.0	0.00	0.00	0.0	0.0	0.0	0.00	0.00	0.0	
2	4795.0	0.00	0.00	4795.0	0.0	0.0	0.00	0.00	0.0	
3	5857.5	85.00	356.79	5508.5	652.8	-36.6	8.00	356.79	653.8	
4	5932.5	85.00	356.79	5515.0	727.3	-40.8	0.00	0.00	728.5	
5	5992.5	89.80	356.79	5517.7	787.2	-44.2	8.00	0.00	788.4	
6	9677.6	89.80	356.79	5530.6	4466.5	-250.7	0.00	0.00	4473.5	Davis State LD02-72-1AHN BHL 330'FNL, 440'FEL



## WELL DETAILS: Davis State LD02-72-1AHN

Ground Level: 4662.0			
0.0	0.0	1529420.88	3464453.32
Northing	Easting	Latitude	Longitude
		40.774590	-103.823000

Plan: APD - Rev 1 (Davis State LD02-72-1AHN/Original Drilling)

Created By: Shailey Jewell

Date: 15:48, August 20 2014

OK to submit with 2A as per Noble Drilling  
 8/21/2014 9:23