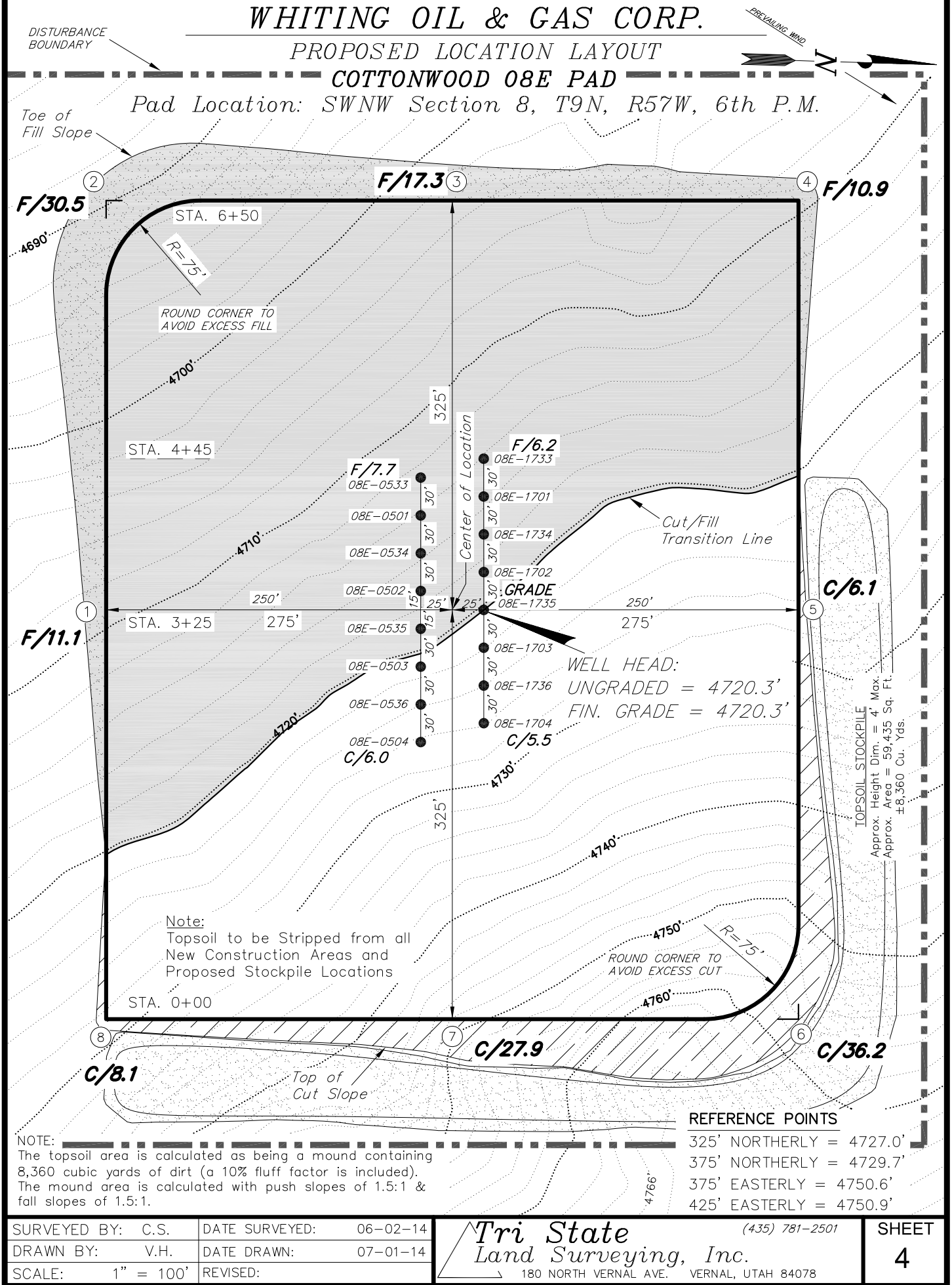


# WHITING OIL & GAS CORP.

## PROPOSED LOCATION LAYOUT

### COTTONWOOD 08E PAD

Pad Location: SWNW Section 8, T9N, R57W, 6th P.M.



|                   |                         |
|-------------------|-------------------------|
| SURVEYED BY: C.S. | DATE SURVEYED: 06-02-14 |
| DRAWN BY: V.H.    | DATE DRAWN: 07-01-14    |
| SCALE: 1" = 100'  | REVISED:                |

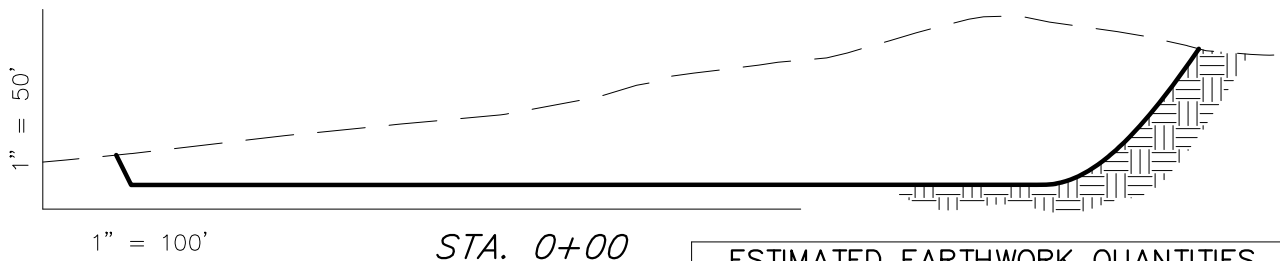
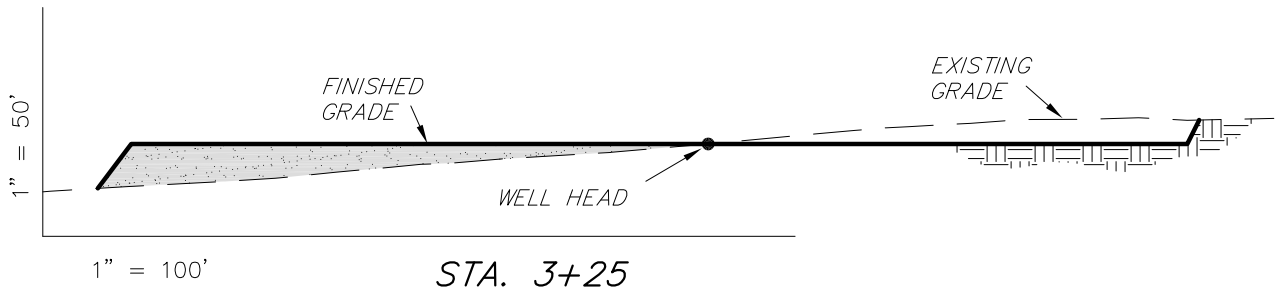
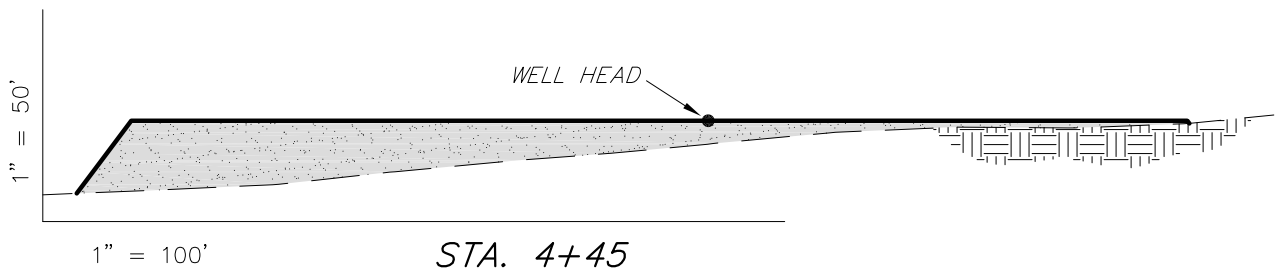
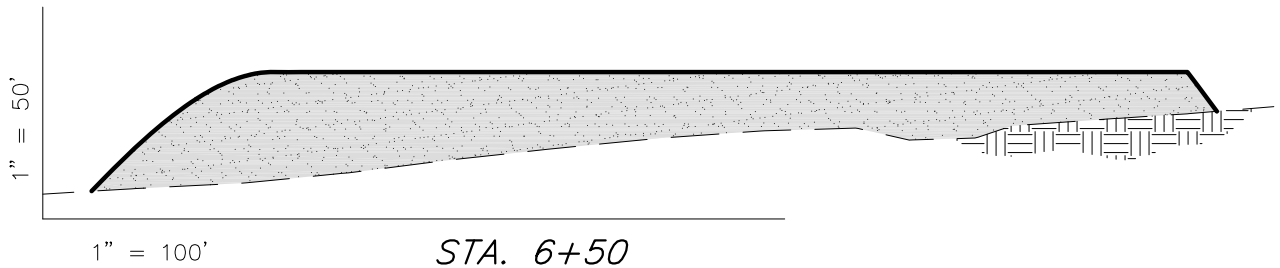
**Tri State**  
Land Surveying, Inc.  
180 NORTH VERNAL AVE. VERNAL, UTAH 84078  
(435) 781-2501

SHEET  
4

# WHITING OIL & GAS CORP.

## CROSS SECTIONS COTTONWOOD 08E PAD

Pad Location: SWNW Section 8, T9N, R57W, 6th P.M.



NOTE:  
UNLESS OTHERWISE  
NOTED ALL CUT/FILL  
SLOPES ARE AT 1.5:1

### ESTIMATED EARTHWORK QUANTITIES (No Shrink or swell adjustments have been used) (Expressed in Cubic Yards)

| ITEM   | CUT    | FILL   | 6" TOPSOIL                                | EXCESS |
|--------|--------|--------|---|--------|
| PAD    | 89,510 | 89,510 | Topsoil is not included in Pad Cut Volume | 0      |
| PIT    | 0      | 0      |   | 0      |
| TOTALS | 89,510 | 89,510 | 7,600                                     | 0      |

SURVEYED BY: C.S. DATE SURVEYED: 06-02-14  
DRAWN BY: V.H. DATE DRAWN: 07-01-14  
SCALE: 1" = 100' REVISED:

**Tri State**  
Land Surveying, Inc.  
180 NORTH VERNAL AVE. VERNAL, UTAH 84078  
(435) 781-2501

SHEET  
5